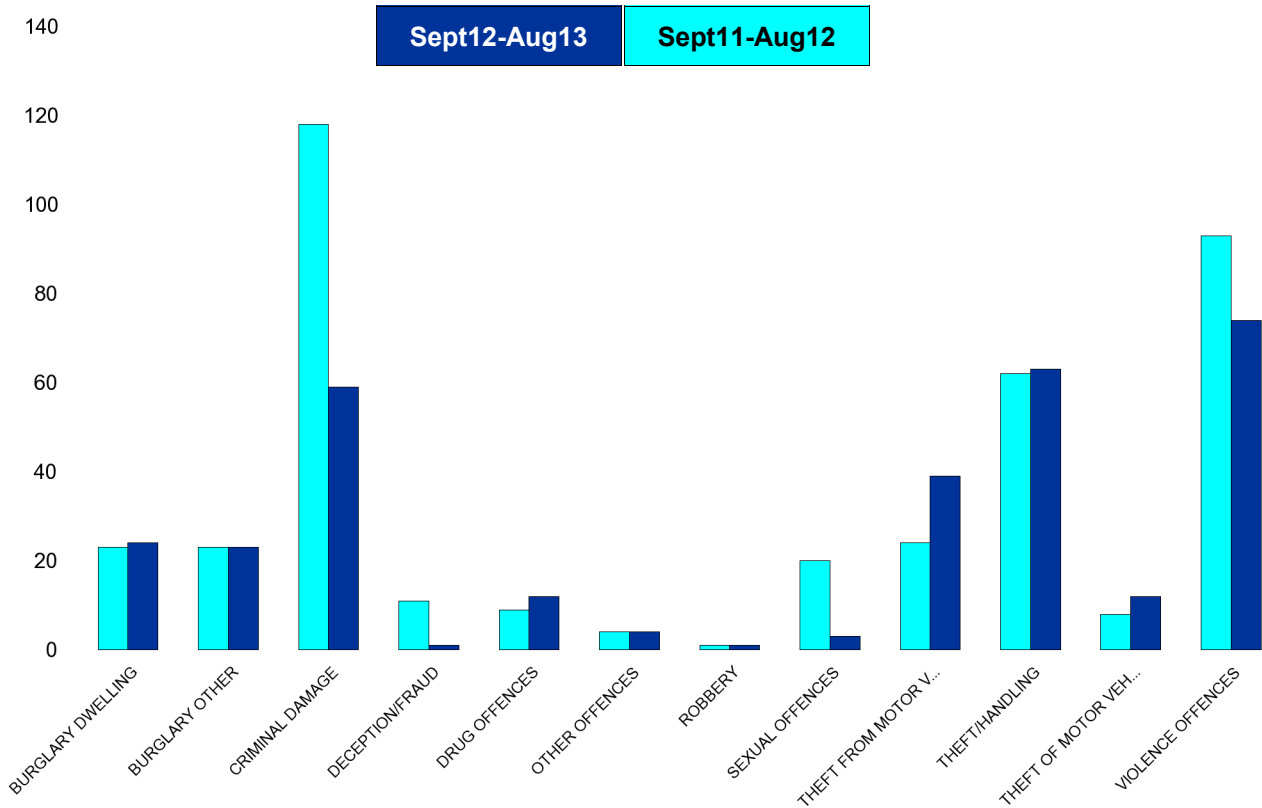


## A6 Towns Forum Report

### K006 & K007 Desborough - Crime

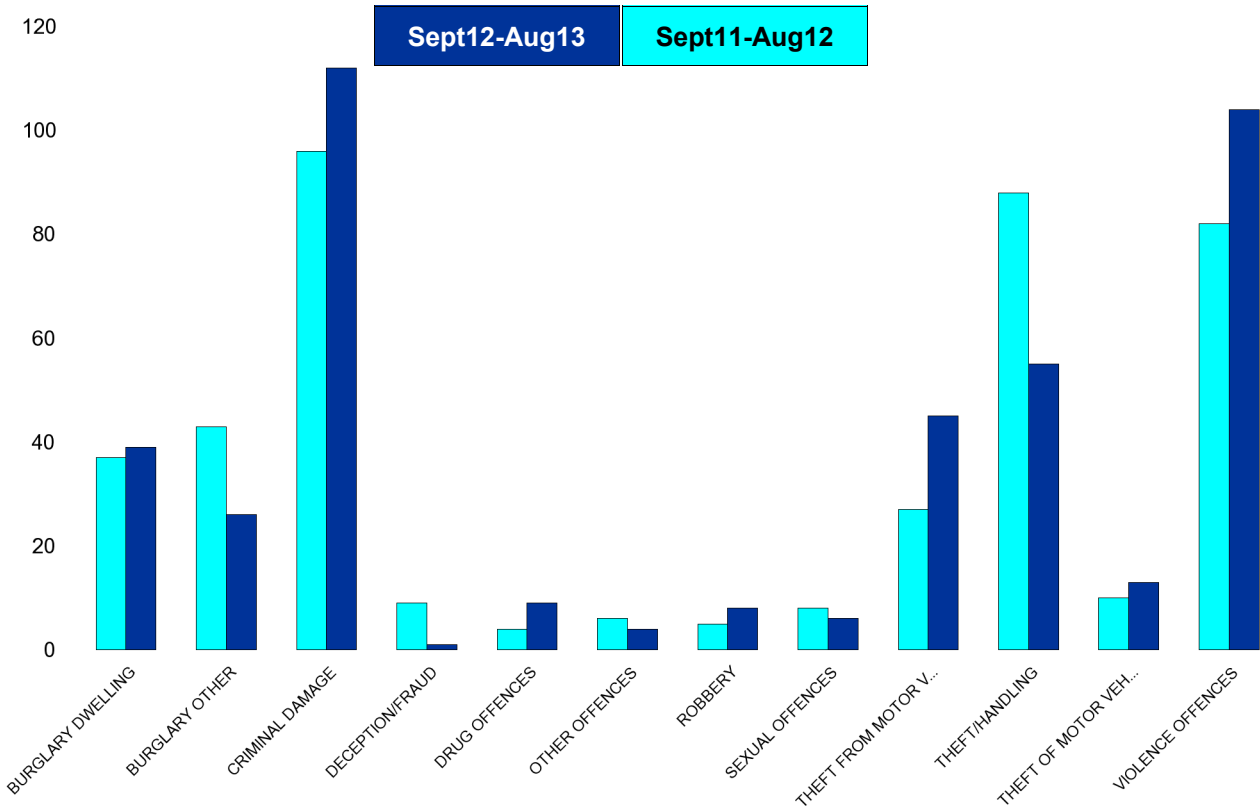
HO Group	No of Crimes (Sept12-Aug13)	No of Crimes (Sept11-Aug12)	+/- Crime	% Change	No of Cleared Up Crimes	Detection Rate (Past 12 Months)
BURGLARY DWELLING	24	23	1	4%	1	4%
BURGLARY OTHER	23	23	0	0%	0	0%
CRIMINAL DAMAGE	59	118	-59	-50%	5	8%
DECEPTION/FRAUD	1	11	-10	-91%	2	200%
DRUG OFFENCES	12	9	3	33%	11	92%
OTHER OFFENCES	4	4	0	0%	3	75%
ROBBERY	1	1	0	0%	2	200%
SEXUAL OFFENCES	3	20	-17	-85%	1	33%
THEFT FROM MOTOR VEHICLES	39	24	15	63%	0	0%
THEFT/HANDLING	63	62	1	2%	10	16%
THEFT OF MOTOR VEHICLES	12	8	4	50%	0	0%
VIOLENCE OFFENCES	74	93	-19	-20%	28	38%
<b>Sum:</b>	<b>315</b>	<b>396</b>	<b>-81</b>	<b>-20%</b>	<b>63</b>	<b>20%</b>



## A6 Towns Forum Report

### K012 Rothwell - Crime

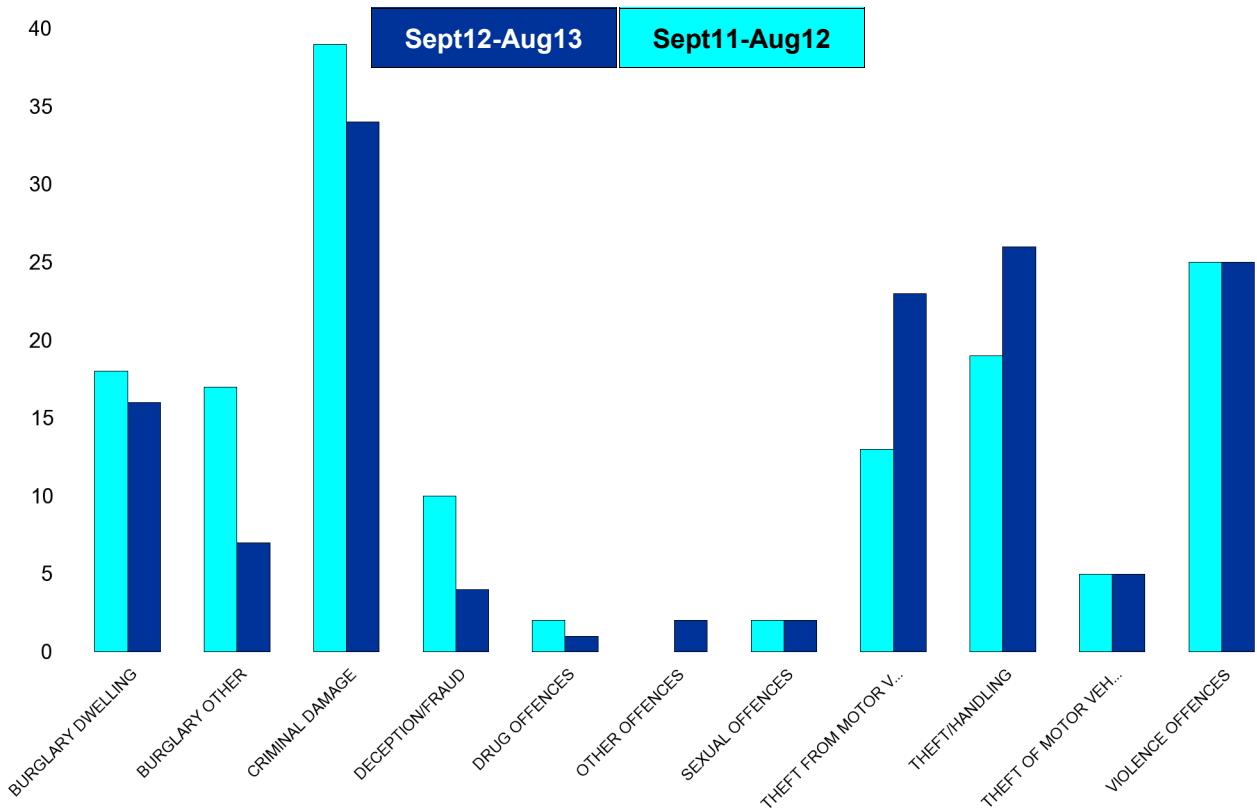
HO Group	No of Crimes (Sept12-Aug13)	No of Crimes (Sept11-Aug12)	+/- Crime	% Change	No of Cleared Up Crimes	Detection Rate (Past 12 Months)
BURGLARY DWELLING	39	37	2	5%	6	15%
BURGLARY OTHER	26	43	-17	-40%	0	0%
CRIMINAL DAMAGE	112	96	16	17%	19	17%
DECEPTION/FRAUD	1	9	-8	-89%	0	0%
DRUG OFFENCES	9	4	5	125%	9	100%
OTHER OFFENCES	4	6	-2	-33%	4	100%
ROBBERY	8	5	3	60%	4	50%
SEXUAL OFFENCES	6	8	-2	-25%	1	17%
THEFT FROM MOTOR VEHICLES	45	27	18	67%	0	0%
THEFT/HANDLING	55	88	-33	-38%	14	25%
THEFT OF MOTOR VEHICLES	13	10	3	30%	0	0%
VIOLENCE OFFENCES	104	82	22	27%	55	53%
<b>Sum:</b>	<b>422</b>	<b>415</b>	<b>7</b>	<b>2%</b>	<b>112</b>	<b>27%</b>



## A6 Towns Forum Report

### K003 Barton - Crime

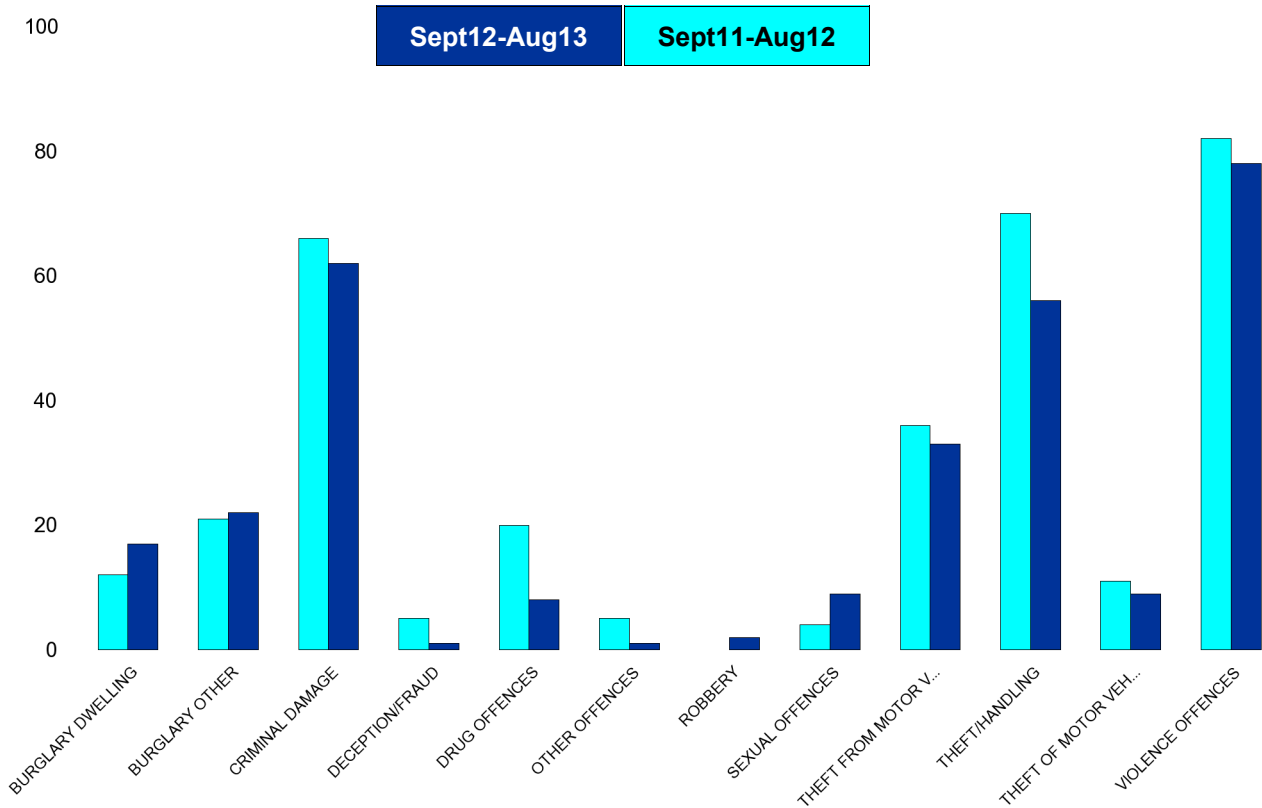
HO Group	No of Crimes (Sept12-Aug13)	No of Crimes (Sept11-Aug12)	+/- Crime	% Change	No of Cleared Up Crimes	Detection Rate (Past 12 Months)
BURGLARY DWELLING	16	18	-2	-11%	5	31%
BURGLARY OTHER	7	17	-10	-59%	0	0%
CRIMINAL DAMAGE	34	39	-5	-13%	3	9%
DECEPTION/FRAUD	4	10	-6	-60%	2	50%
DRUG OFFENCES	1	2	-1	-50%	1	100%
OTHER OFFENCES	2	0	2	#DIV/0	1	50%
SEXUAL OFFENCES	2	2	0	0%	2	100%
THEFT FROM MOTOR VEHICLES	23	13	10	77%	0	0%
THEFT/HANDLING	26	19	7	37%	3	12%
THEFT OF MOTOR VEHICLES	5	5	0	0%	2	40%
VIOLENCE OFFENCES	25	25	0	0%	13	52%
<b>Sum:</b>	<b>145</b>	<b>150</b>	<b>-5</b>	<b>-3%</b>	<b>32</b>	<b>22%</b>



## A6 Towns Forum Report

### K005 Burton Latimer - Crime

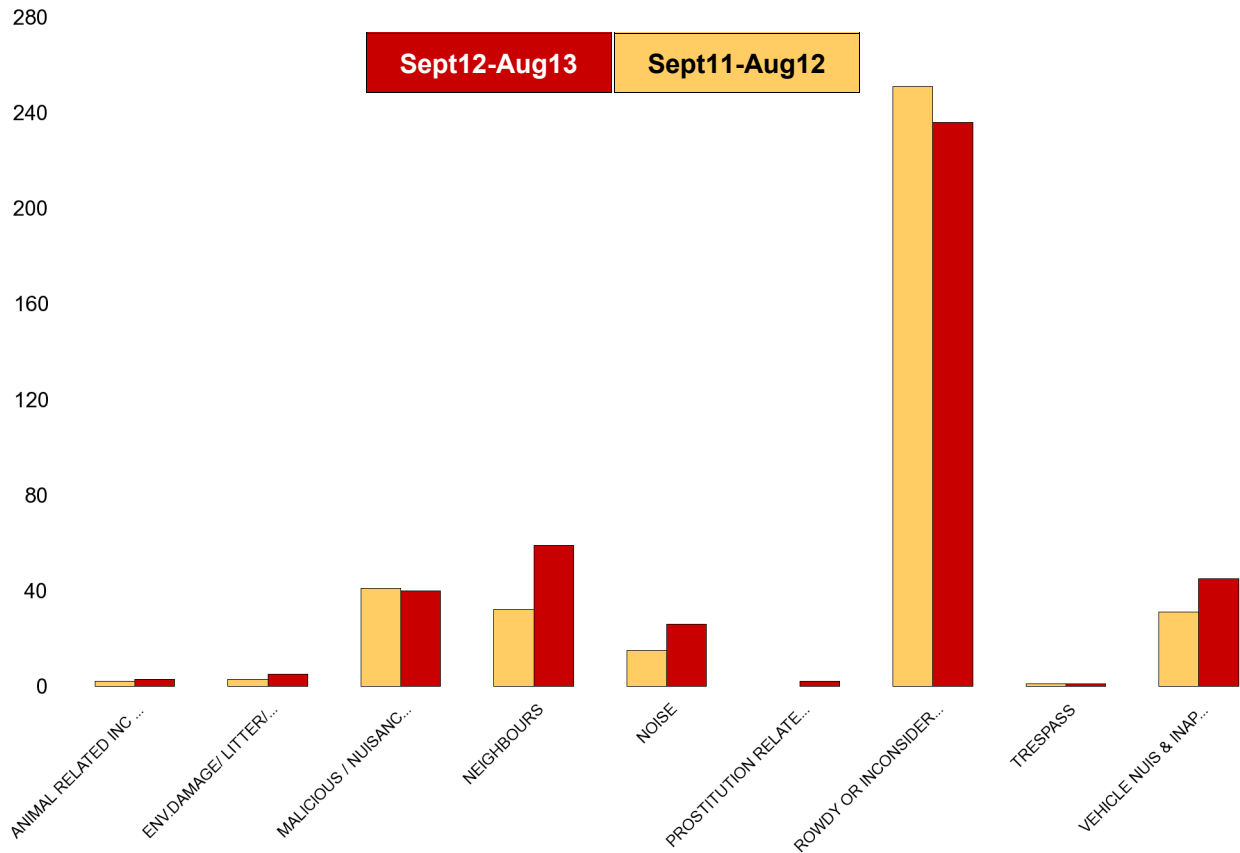
HO Group	No of Crimes (Sept12-Aug13)	No of Crimes (Sept11-Aug12)	+/- Crime	% Change	No of Cleared Up Crimes	Detection Rate (Past 12 Months)
BURGLARY DWELLING	17	12	5	42%	2	12%
BURGLARY OTHER	22	21	1	5%	0	0%
CRIMINAL DAMAGE	62	66	-4	-6%	12	19%
DECEPTION/FRAUD	1	5	-4	-80%	0	0%
DRUG OFFENCES	8	20	-12	-60%	8	100%
OTHER OFFENCES	1	5	-4	-80%	1	100%
ROBBERY	2	0	2	0%	0	0%
SEXUAL OFFENCES	9	4	5	125%	3	33%
THEFT FROM MOTOR VEHICLES	33	36	-3	-8%	0	0%
THEFT/HANDLING	56	70	-14	-20%	11	20%
THEFT OF MOTOR VEHICLES	9	11	-2	-18%	0	0%
VIOLENCE OFFENCES	78	82	-4	-5%	29	37%
<b>Sum:</b>	<b>298</b>	<b>332</b>	<b>-34</b>	<b>-10%</b>	<b>66</b>	<b>22%</b>



## A6 Towns Forum Report

### K006 & K007 Desborough ASB

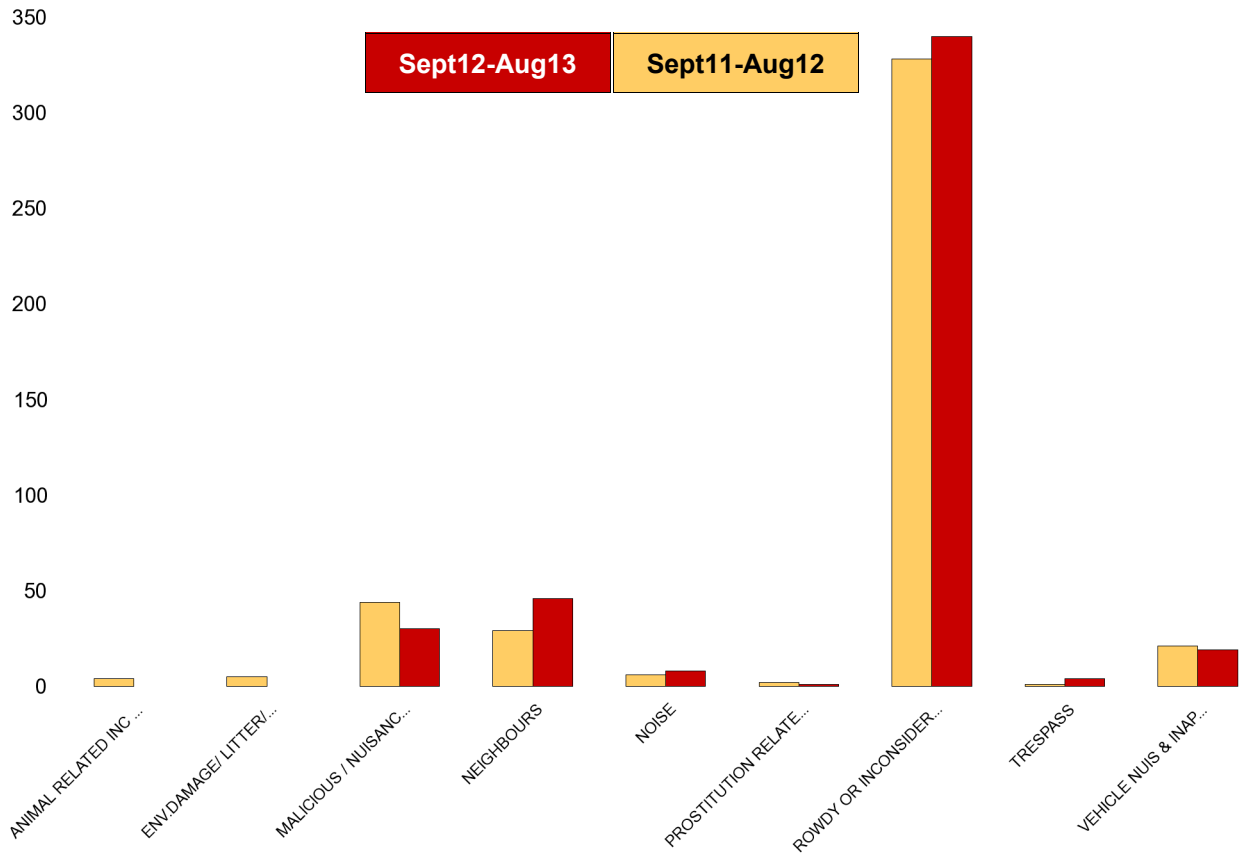
NSIR Closing Cat. 1 Desc	No of Incidents (Sept12-Aug13)	No of Incidents (Sept11-Aug12)	+/- Incidents	% Change Incidents
ANIMAL RELATED INC ANTI-SOCIAL	3	2	1	50%
ENV.DAMAGE/ LITTER/ NEEDLES	5	3	2	67%
MALICIOUS / NUISANCE COMMS	40	41	-1	-2%
NEIGHBOURS	59	32	27	84%
NOISE	26	15	11	73%
PROSTITUTION RELATED ACTIVITY	2	0	2	0%
ROWDY OR INCONSIDERATE BEHAV	236	251	-15	-6%
TRESPASS	1	1	0	0%
VEHICLE NUIS & INAPPROP VEH US	45	31	14	45%
<b>Sum:</b>	<b>417</b>	<b>376</b>	<b>41</b>	<b>11%</b>



## A6 Towns Forum Report

### K012 Rothwell ASB

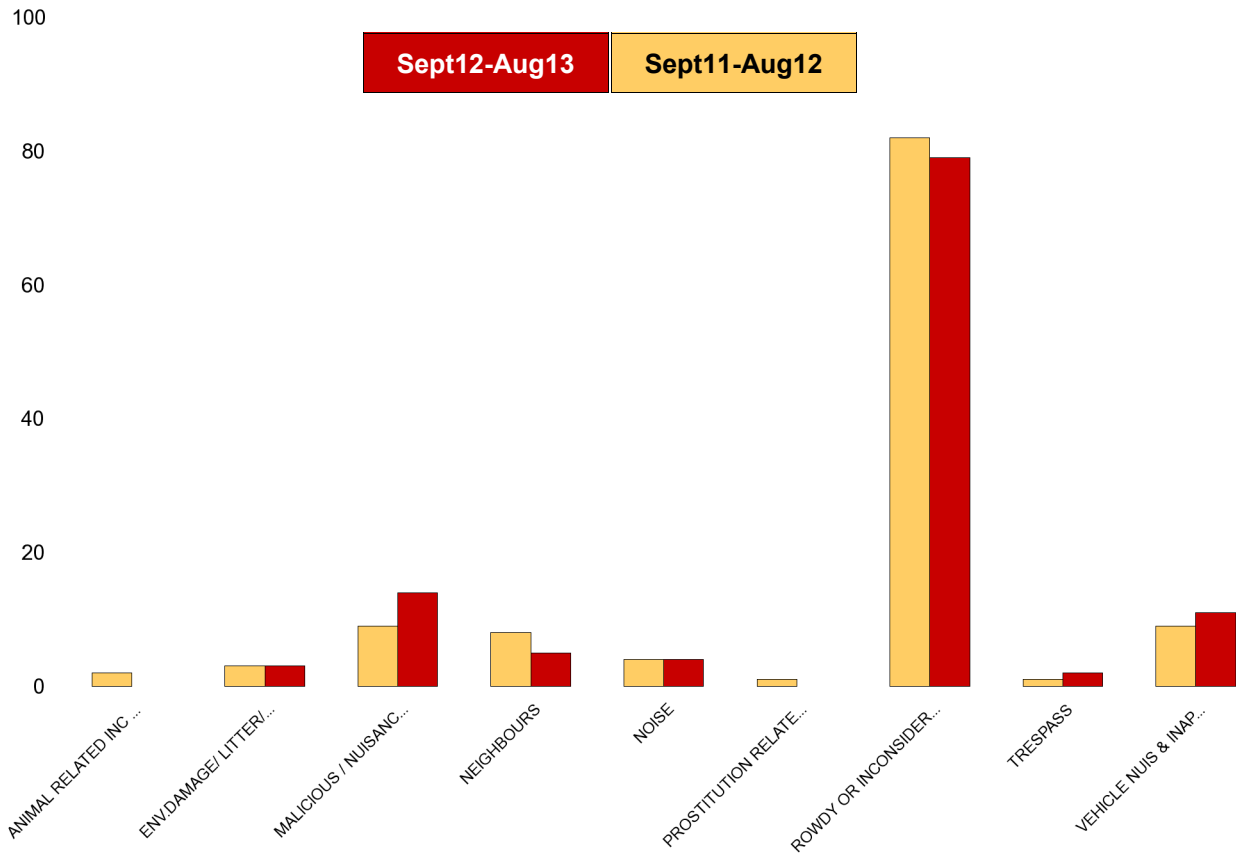
NSIR Closing Cat. 1 Desc	No of Incidents (Sept12-Aug13)	No of Incidents (Sept11-Aug12)	+/- Incidents	% Change Incidents
ANIMAL RELATED INC ANTI-SOCIAL	0	4	-4	-100%
ENV.DAMAGE/ LITTER/ NEEDLES	0	5	-5	-100%
MALICIOUS / NUISANCE COMMS	30	44	-14	-32%
NEIGHBOURS	46	29	17	59%
NOISE	8	6	2	33%
PROSTITUTION RELATED ACTIVITY	1	2	-1	-50%
ROWDY OR INCONSIDERATE BEHAV	340	328	12	4%
TRESPASS	4	1	3	300%
VEHICLE NUIS & INAPPROP VEH US	19	21	-2	-10%
<b>Sum:</b>	<b>448</b>	<b>440</b>	<b>8</b>	<b>2%</b>



# A6 Towns Forum Report

## K003 Barton ASB

NSIR Closing Cat. 1 Desc	No of Incidents (Sept12-Aug13)	No of Incidents (Sept11-Aug12)	+/- Incidents	% Change Incidents
ANIMAL RELATED INC ANTI-SOCIAL	0	2	-2	-100%
ENV.DAMAGE/ LITTER/ NEEDLES	3	3	0	0%
MALICIOUS / NUISANCE COMMS	14	9	5	56%
NEIGHBOURS	5	8	-3	-38%
NOISE	4	4	0	0%
PROSTITUTION RELATED ACTIVITY	0	1	-1	-100%
ROWDY OR INCONSIDERATE BEHAV	79	82	-3	-4%
TRESPASS	2	1	1	100%
VEHICLE NUIS & INAPPROP VEH US	11	9	2	22%
<b>Sum:</b>	<b>118</b>	<b>119</b>	<b>-1</b>	<b>-1%</b>



## A6 Towns Forum Report

### K005 Latimer ASB

NSIR Closing Cat. 1 Desc	No of Incidents (Sept12-Aug13)	No of Incidents (Sept11-Aug12)	+/- Incidents	% Change Incidents
ANIMAL RELATED INC ANTI-SOCIAL	7	2	5	250%
ENV.DAMAGE/ LITTER/ NEEDLES	7	2	5	250%
MALICIOUS / NUISANCE COMMS	30	41	-11	-27%
NEIGHBOURS	24	25	-1	-4%
NOISE	21	12	9	75%
ROWDY OR INCONSIDERATE BEHAV	153	150	3	2%
TRESPASS	1	1	0	0%
VEHICLE NUIS & INAPPROP VEH US	18	31	-13	-42%
<b>Sum:</b>	<b>261</b>	<b>264</b>	<b>-3</b>	<b>-1%</b>

