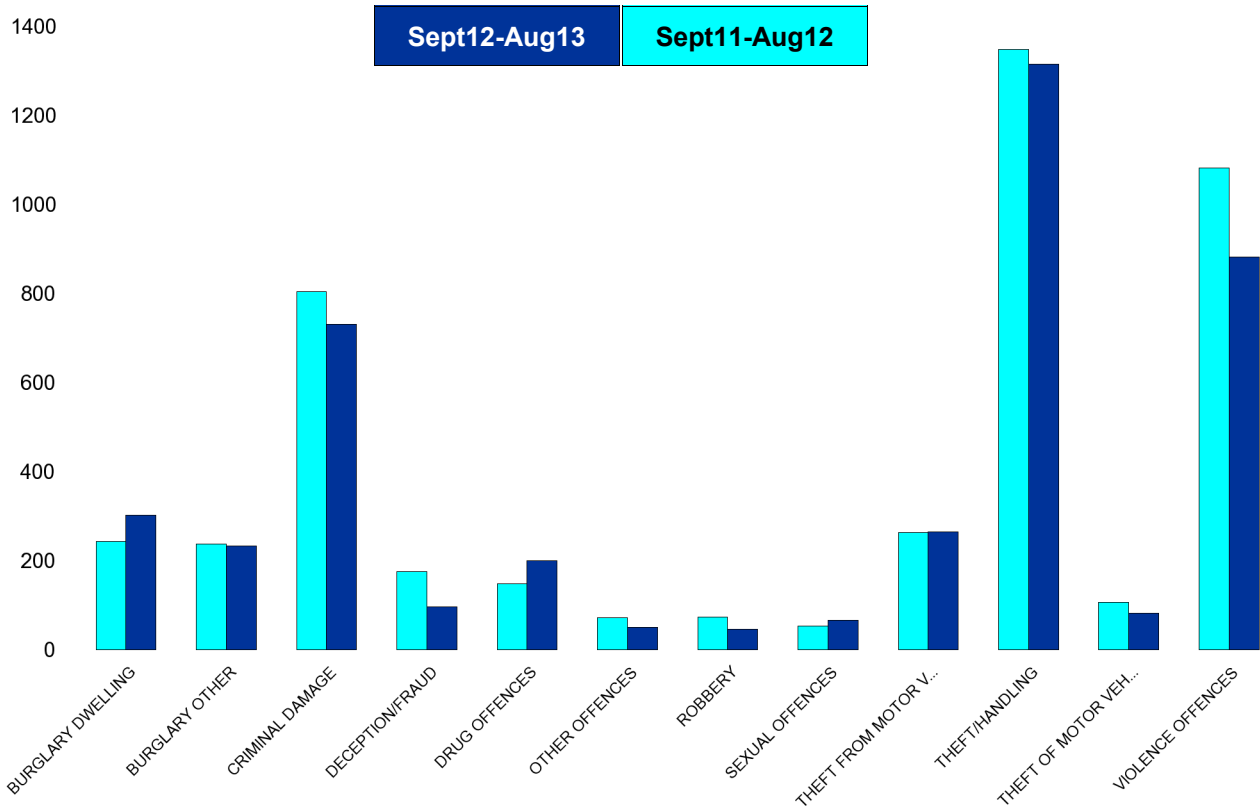


Kettering Town Forum Report

Kettering Town SCT - Crime

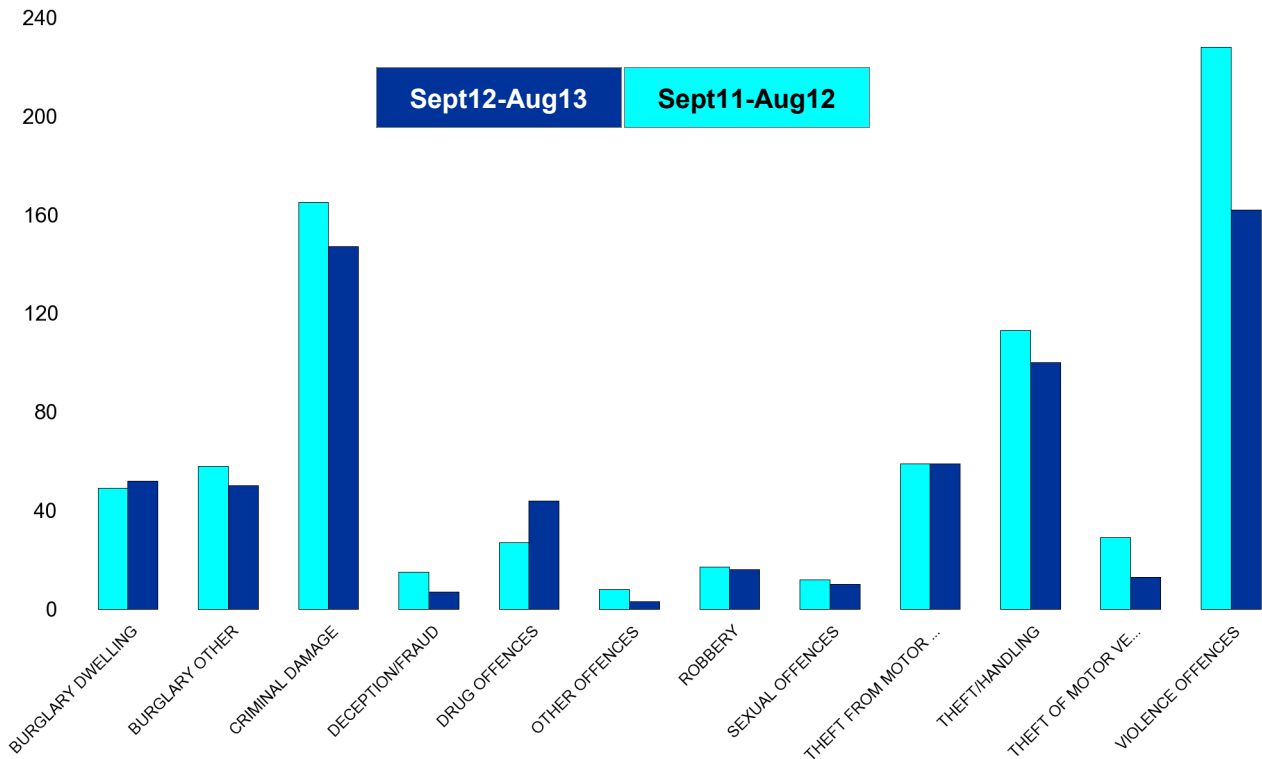
HO Group	No of Crimes (Sept12-Aug13)	No of Crimes (Sept11-Aug12)	+/- Crime	% Change	No of Cleared Up Crimes	Detection Rate (Past 12 Months)
BURGLARY DWELLING	303	244	59	24%	24	8%
BURGLARY OTHER	233	237	-4	-2%	51	22%
CRIMINAL DAMAGE	731	805	-74	-9%	129	18%
DECEPTION/FRAUD	96	176	-80	-45%	39	41%
DRUG OFFENCES	200	148	52	35%	192	96%
OTHER OFFENCES	50	72	-22	-31%	28	56%
ROBBERY	46	73	-27	-37%	12	26%
SEXUAL OFFENCES	66	53	13	25%	20	30%
THEFT FROM MOTOR VEHICLES	265	263	2	1%	13	5%
THEFT/HANDLING	1315	1349	-34	-3%	569	43%
THEFT OF MOTOR VEHICLES	82	106	-24	-23%	15	18%
VIOLENCE OFFENCES	883	1083	-200	-18%	409	46%
Sum:	4270	4609	-339	-7%	1501	35%



Kettering Town Forum Report

All Saints

HO Group	No of Crimes (Sept12-Aug13)	No of Crimes (Sept11-Aug12)	+/- Crime	% Change	No of Cleared Up Crimes	Detection Rate (Past 12 Months)
BURGLARY DWELLING	52	49	3	6%	4	8%
BURGLARY OTHER	50	58	-8	-14%	12	24%
CRIMINAL DAMAGE	147	165	-18	-11%	28	19%
DECEPTION/FRAUD	7	15	-8	-53%	5	71%
DRUG OFFENCES	44	27	17	63%	42	95%
OTHER OFFENCES	3	8	-5	-63%	2	67%
ROBBERY	16	17	-1	-6%	2	13%
SEXUAL OFFENCES	10	12	-2	-17%	5	50%
THEFT FROM MOTOR VEHICLES	59	59	0	0%	5	8%
THEFT/HANDLING	100	113	-13	-12%	25	25%
THEFT OF MOTOR VEHICLES	13	29	-16	-55%	0	0%
VIOLENCE OFFENCES	162	228	-66	-29%	83	51%
Sum:	663	780	-117	-15%	213	32%

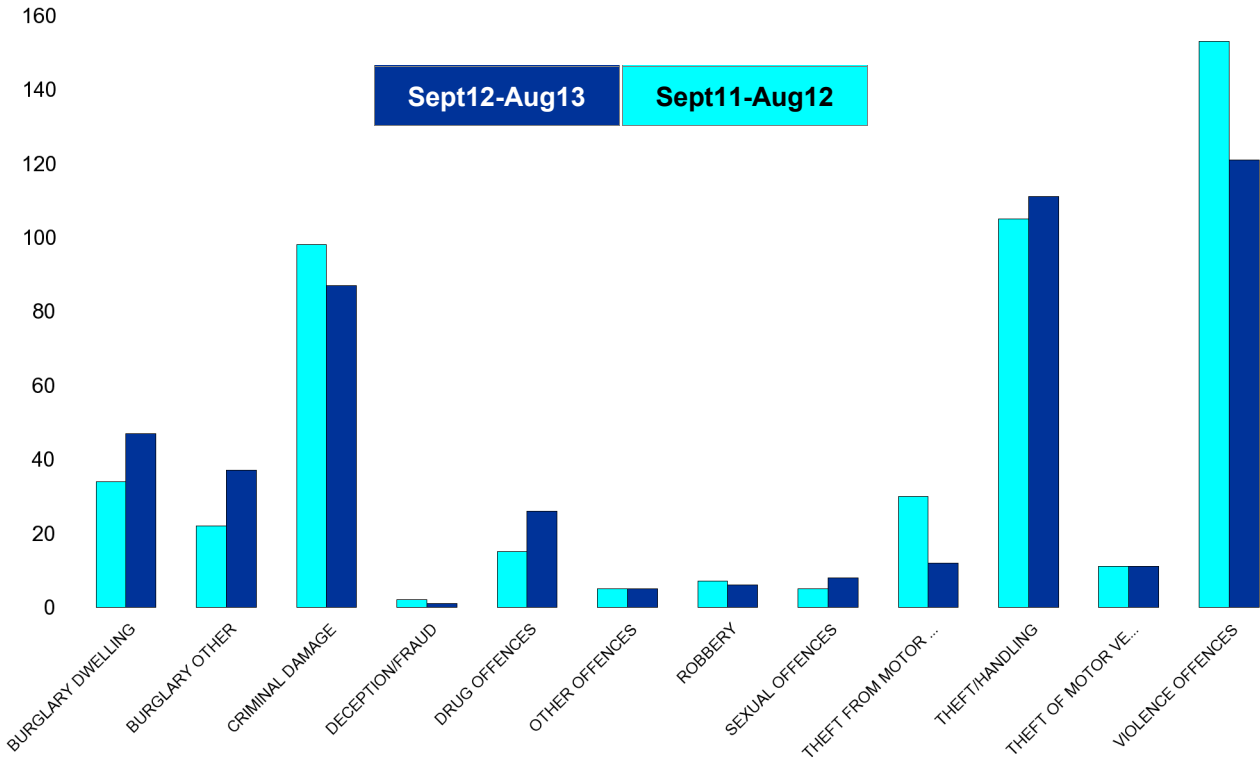


Kettering Town Forum Report

Avondale Grange

HO Group	No of Crimes (Sept12-Aug13)	No of Crimes (Sept11-Aug12)	+/- Crime	% Change
BURGLARY DWELLING	47	34	13	38%
BURGLARY OTHER	37	22	15	68%
CRIMINAL DAMAGE	87	98	-11	-11%
DECEPTION/FRAUD	1	2	-1	-50%
DRUG OFFENCES	26	15	11	73%
OTHER OFFENCES	5	5	0	0%
ROBBERY	6	7	-1	-14%
SEXUAL OFFENCES	8	5	3	60%
THEFT FROM MOTOR VEHICLES	12	30	-18	-60%
THEFT/HANDLING	111	105	6	6%
THEFT OF MOTOR VEHICLES	11	11	0	0%
VIOLENCE OFFENCES	121	153	-32	-21%
Sum:	472	487	-15	-3%

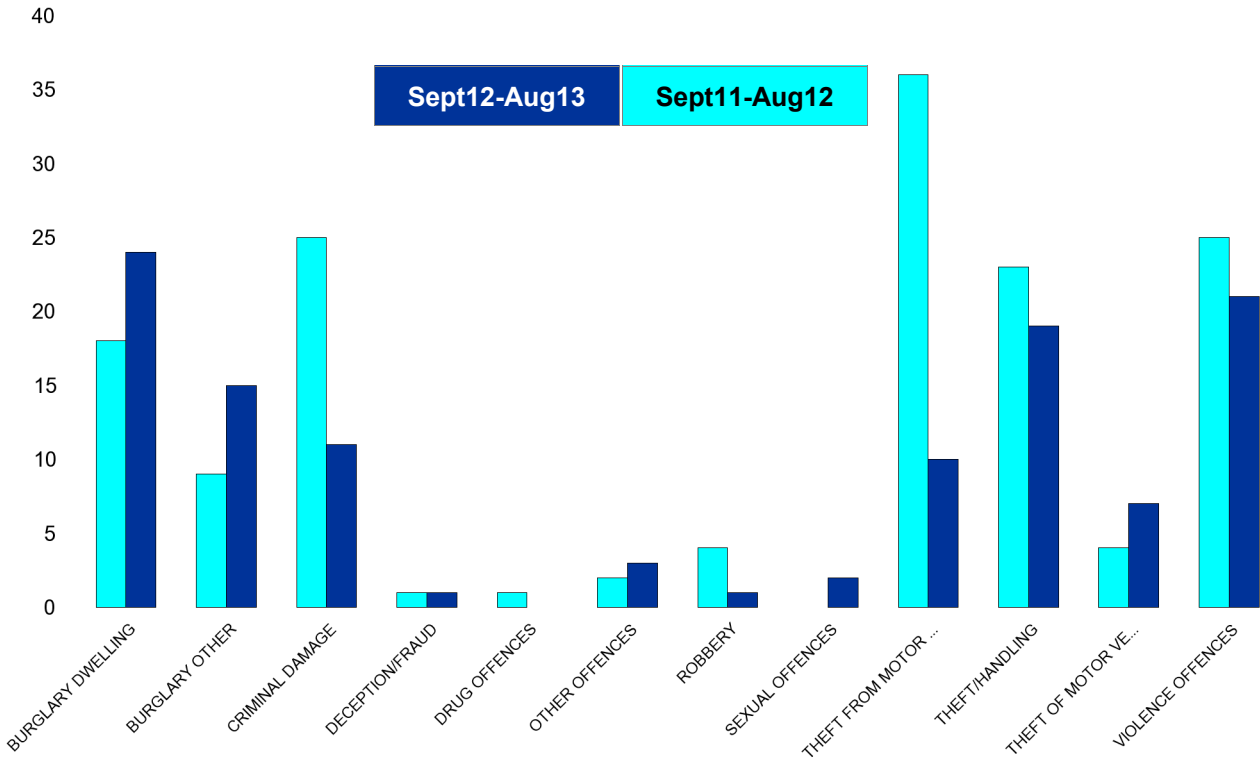
No of Cleared Up Crimes	Detection Rate (Past 12 Months)
2	4%
6	16%
9	10%
0	0%
23	88%
2	40%
1	17%
1	13%
1	8%
34	31%
1	9%
50	41%
130	28%



Kettering Town Forum Report

Brambleside

HO Group	No of Crimes (Sept12-Aug13)	No of Crimes (Sept11-Aug12)	+/- Crime	% Change	No of Cleared Up Crimes	Detection Rate (Past 12 Months)
BURGLARY DWELLING	24	18	6	33%	3	13%
BURGLARY OTHER	15	9	6	67%	1	7%
CRIMINAL DAMAGE	11	25	-14	-56%	0	0%
DECEPTION/FRAUD	1	1	0	0%	1	100%
DRUG OFFENCES	0	1	-1	-100%	0	0%
OTHER OFFENCES	3	2	1	50%	0	0%
ROBBERY	1	4	-3	-75%	0	0%
SEXUAL OFFENCES	2	0	2	0%	1	50%
THEFT FROM MOTOR VEHICLES	10	36	-26	-72%	0	0%
THEFT/HANDLING	19	23	-4	-17%	6	32%
THEFT OF MOTOR VEHICLES	7	4	3	75%	0	0%
VIOLENCE OFFENCES	21	25	-4	-16%	10	48%
Sum:	114	148	-34	-23%	22	19%

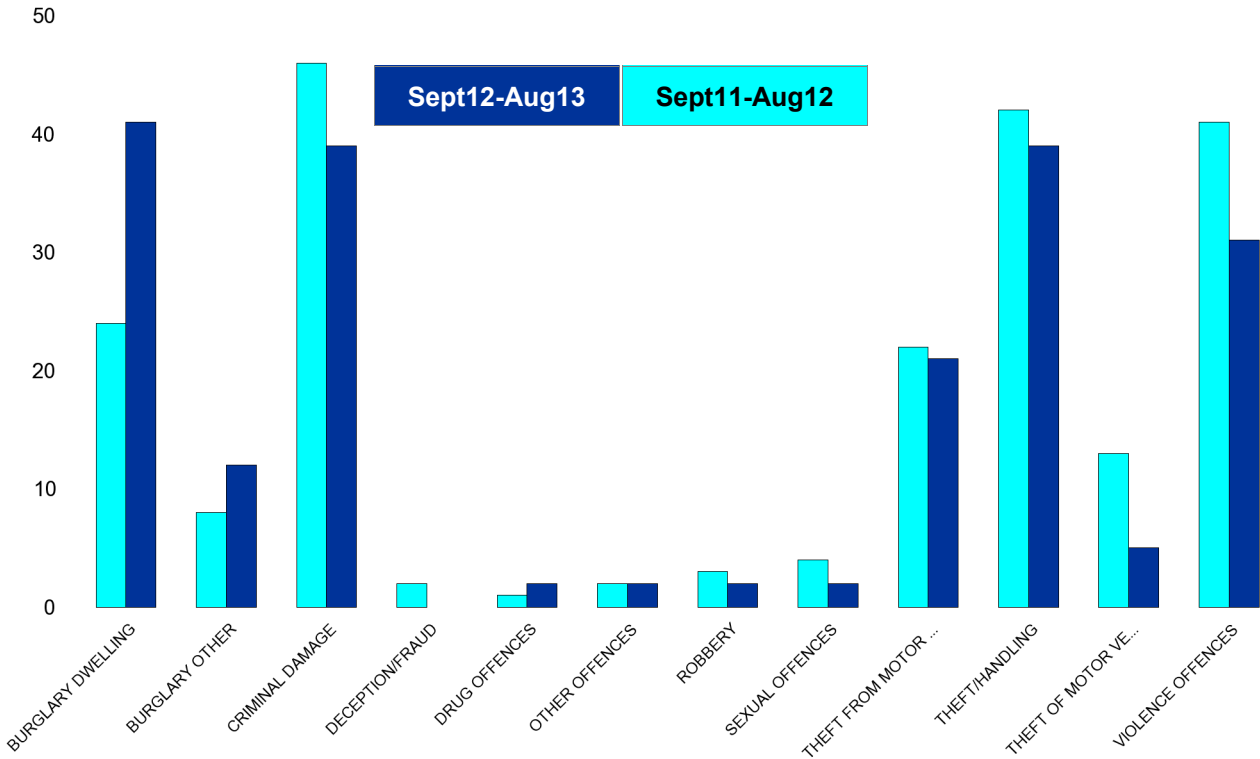


Kettering Town Forum Report

Ise Lodge

HO Group	No of Crimes (Sept12-Aug13)	No of Crimes (Sept11-Aug12)	+/- Crime	% Change
BURGLARY DWELLING	41	24	17	71%
BURGLARY OTHER	12	8	4	50%
CRIMINAL DAMAGE	39	46	-7	-15%
DECEPTION/FRAUD	0	2	-2	-100%
DRUG OFFENCES	2	1	1	100%
OTHER OFFENCES	2	2	0	0%
ROBBERY	2	3	-1	-33%
SEXUAL OFFENCES	2	4	-2	-50%
THEFT FROM MOTOR VEHICLES	21	22	-1	-5%
THEFT/HANDLING	39	42	-3	-7%
THEFT OF MOTOR VEHICLES	5	13	-8	-62%
VIOLENCE OFFENCES	31	41	-10	-24%
Sum:	196	208	-12	-6%

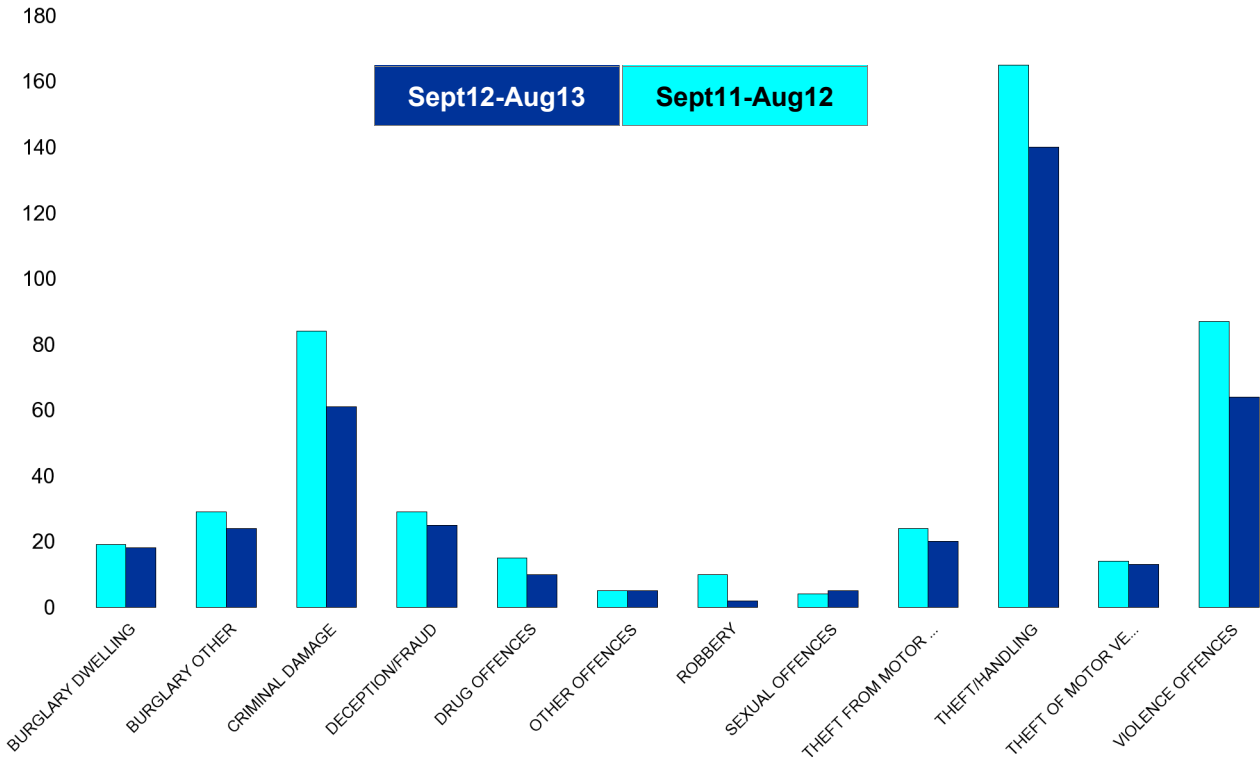
No of Cleared Up Crimes	Detection Rate (Past 12 Months)
1	2%
1	8%
1	3%
0	0%
2	100%
0	0%
0	0%
0	0%
1	5%
12	31%
2	40%
14	45%
34	17%



Kettering Town Forum Report

Northfield

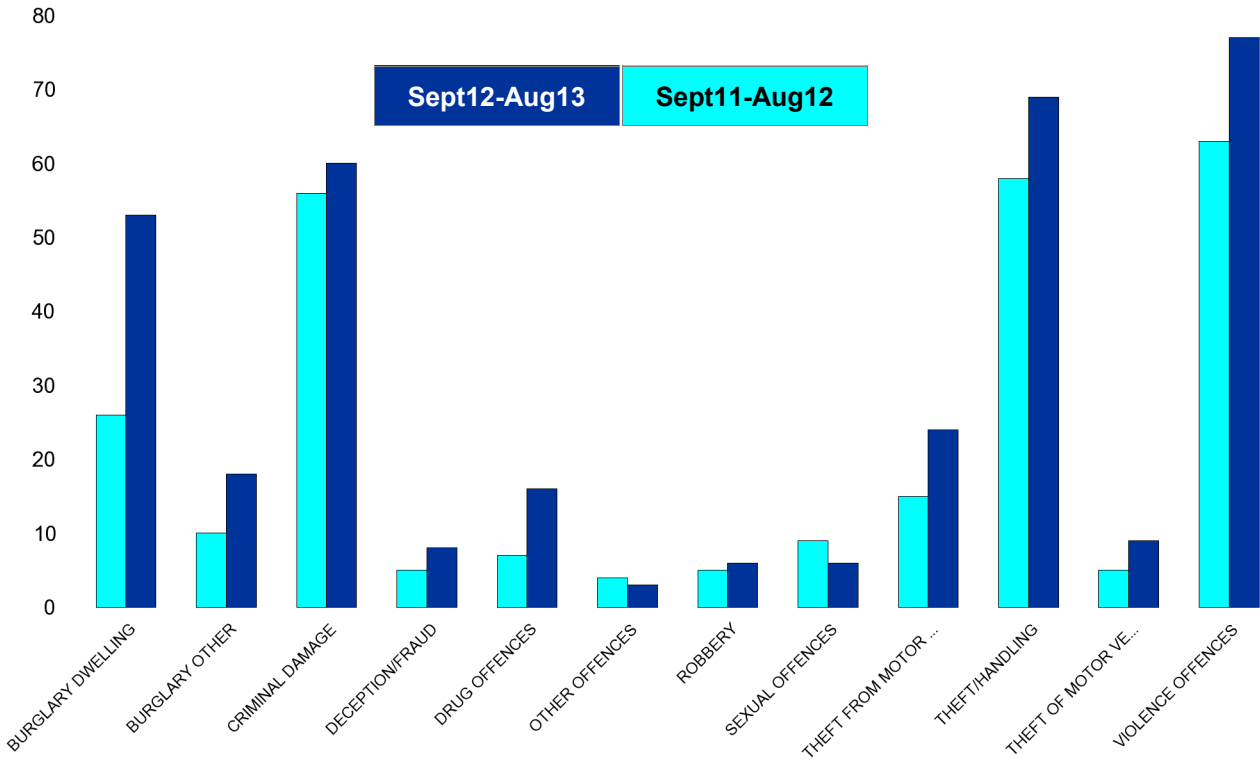
HO Group	No of Crimes (Sept12-Aug13)	No of Crimes (Sept11-Aug12)	+/- Crime	% Change	No of Cleared Up Crimes	Detection Rate (Past 12 Months)
BURGLARY DWELLING	18	19	-1	-5%	3	17%
BURGLARY OTHER	24	29	-5	-17%	8	33%
CRIMINAL DAMAGE	61	84	-23	-27%	13	21%
DECEPTION/FRAUD	25	29	-4	-14%	8	32%
DRUG OFFENCES	10	15	-5	-33%	9	90%
OTHER OFFENCES	5	5	0	0%	2	40%
ROBBERY	2	10	-8	-80%	1	50%
SEXUAL OFFENCES	5	4	1	25%	0	0%
THEFT FROM MOTOR VEHICLES	20	24	-4	-17%	0	0%
THEFT/HANDLING	140	165	-25	-15%	83	59%
THEFT OF MOTOR VEHICLES	13	14	-1	-7%	5	38%
VIOLENCE OFFENCES	64	87	-23	-26%	32	50%
Sum:	387	485	-98	-20%	164	42%



Kettering Town Forum Report

Pipers Hill

HO Group	No of Crimes (Sept12-Aug13)	No of Crimes (Sept11-Aug12)	+/- Crime	% Change	No of Cleared Up Crimes	Detection Rate (Past 12 Months)
BURGLARY DWELLING	53	26	27	104%	4	8%
BURGLARY OTHER	18	10	8	80%	2	11%
CRIMINAL DAMAGE	60	56	4	7%	13	22%
DECEPTION/FRAUD	8	5	3	60%	2	25%
DRUG OFFENCES	16	7	9	129%	15	94%
OTHER OFFENCES	3	4	-1	-25%	3	100%
ROBBERY	6	5	1	20%	1	17%
SEXUAL OFFENCES	6	9	-3	-33%	2	33%
THEFT FROM MOTOR VEHICLES	24	15	9	60%	2	8%
THEFT/HANDLING	69	58	11	19%	20	29%
THEFT OF MOTOR VEHICLES	9	5	4	80%	0	0%
VIOLENCE OFFENCES	77	63	14	22%	27	35%
Sum:	349	263	86	33%	91	26%

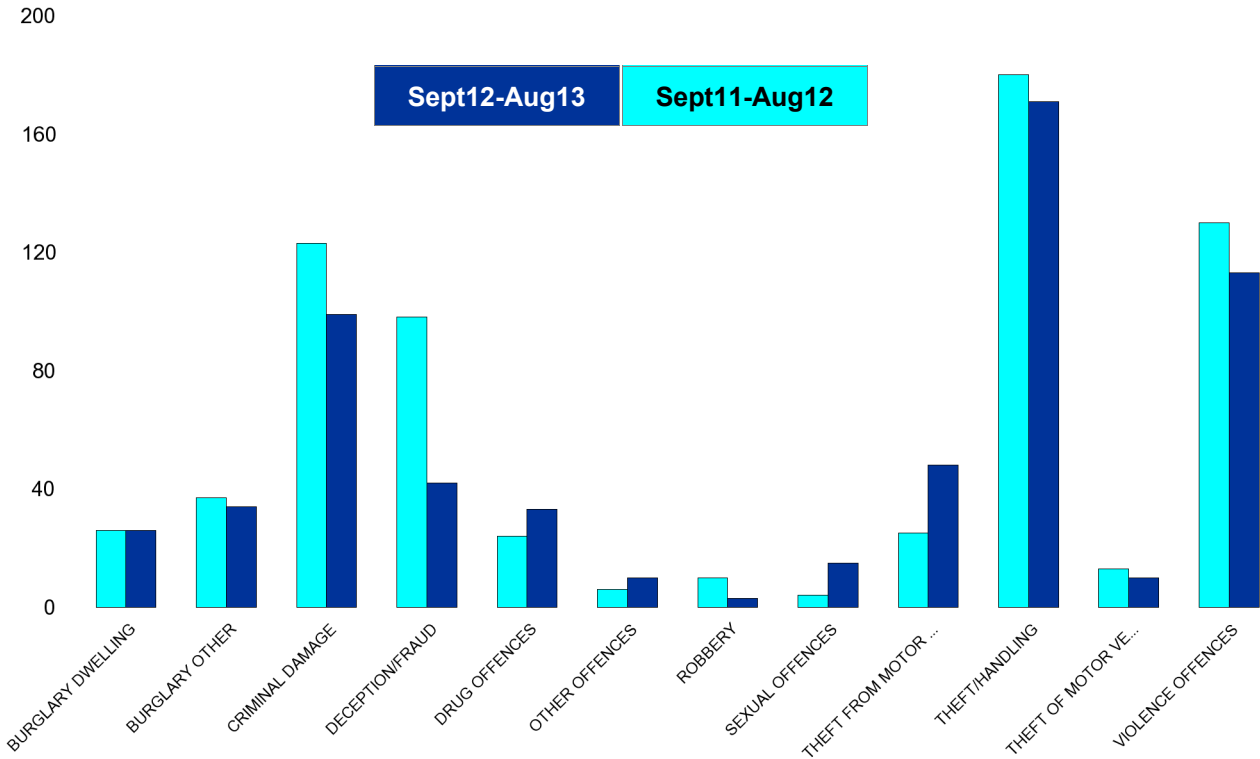


Kettering Town Forum Report

St Michaels and Wicksteed

HO Group	No of Crimes (Sept12-Aug13)	No of Crimes (Sept11-Aug12)	+/- Crime	% Change
BURGLARY DWELLING	26	26	0	0%
BURGLARY OTHER	34	37	-3	-8%
CRIMINAL DAMAGE	99	123	-24	-20%
DECEPTION/FRAUD	42	98	-56	-57%
DRUG OFFENCES	33	24	9	38%
OTHER OFFENCES	10	6	4	67%
ROBBERY	3	10	-7	-70%
SEXUAL OFFENCES	15	4	11	275%
THEFT FROM MOTOR VEHICLES	48	25	23	92%
THEFT/HANDLING	171	180	-9	-5%
THEFT OF MOTOR VEHICLES	10	13	-3	-23%
VIOLENCE OFFENCES	113	130	-17	-13%
Sum:	604	676	-72	-11%

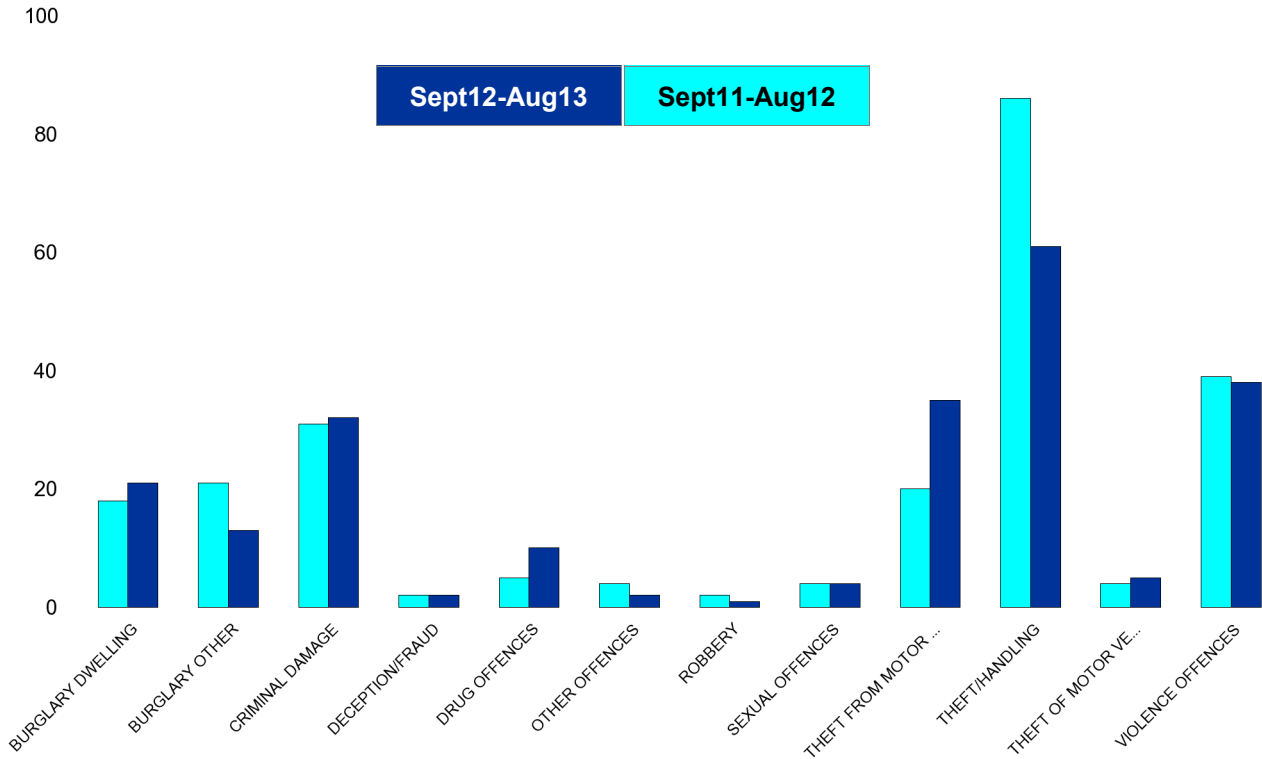
No of Cleared Up Crimes	Detection Rate (Past 12 Months)
2	8%
4	12%
18	18%
18	43%
36	109%
6	60%
1	33%
9	60%
0	0%
56	33%
2	20%
51	45%
203	34%



Kettering Town Forum Report

St Peters

HO Group	No of Crimes (Sept12-Aug13)	No of Crimes (Sept11-Aug12)	+/- Crime	% Change	No of Cleared Up Crimes	Detection Rate (Past 12 Months)
BURGLARY DWELLING	21	18	3	17%	0	0%
BURGLARY OTHER	13	21	-8	-38%	0	0%
CRIMINAL DAMAGE	32	31	1	3%	5	16%
DECEPTION/FRAUD	2	2	0	0%	0	0%
DRUG OFFENCES	10	5	5	100%	9	90%
OTHER OFFENCES	2	4	-2	-50%	1	50%
ROBBERY	1	2	-1	-50%	1	100%
SEXUAL OFFENCES	4	4	0	0%	0	0%
THEFT FROM MOTOR VEHICLES	35	20	15	75%	2	6%
THEFT/HANDLING	61	86	-25	-29%	13	21%
THEFT OF MOTOR VEHICLES	5	4	1	25%	3	60%
VIOLENCE OFFENCES	38	39	-1	-3%	18	47%
Sum:	224	236	-12	-5%	52	23%

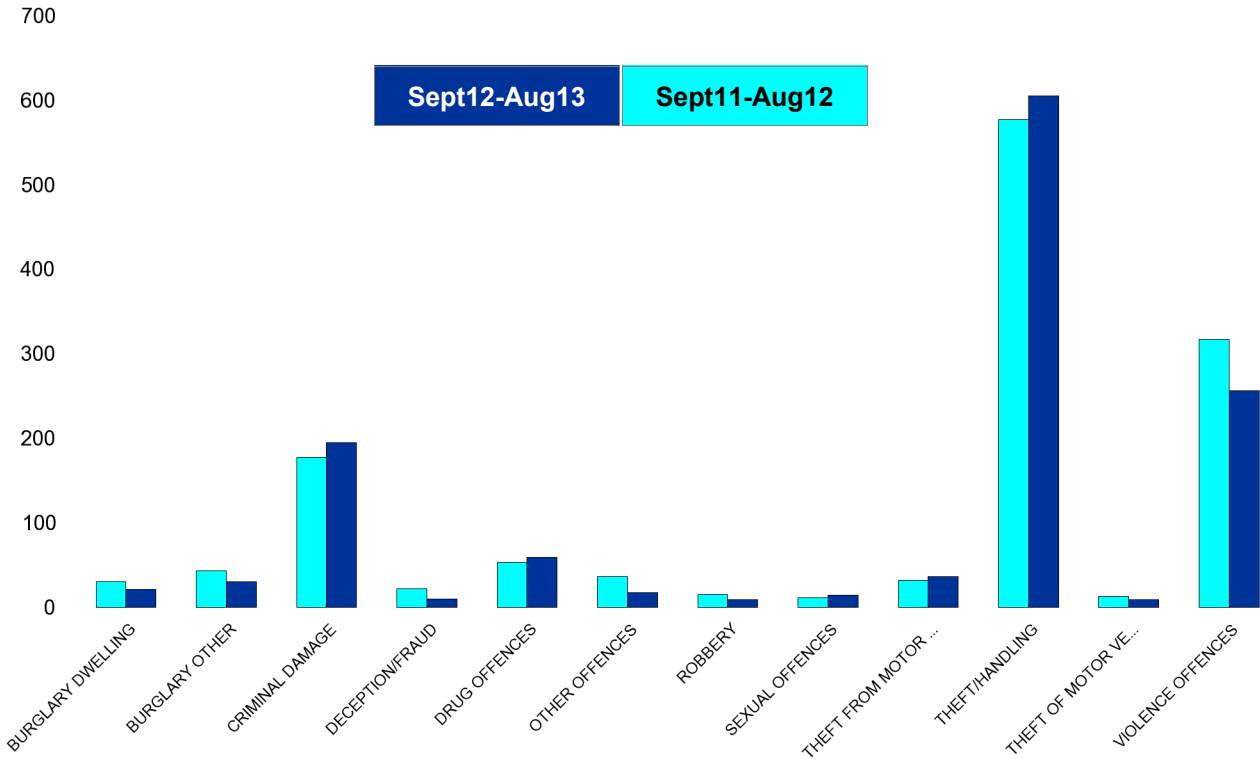


Kettering Town Forum Report

William Knibb

HO Group	No of Crimes (Sept12-Aug13)	No of Crimes (Sept11-Aug12)	+/- Crime	% Change
BURGLARY DWELLING	21	30	-9	-30%
BURGLARY OTHER	30	43	-13	-30%
CRIMINAL DAMAGE	195	177	18	10%
DECEPTION/FRAUD	10	22	-12	-55%
DRUG OFFENCES	59	53	6	11%
OTHER OFFENCES	17	36	-19	-53%
ROBBERY	9	15	-6	-40%
SEXUAL OFFENCES	14	11	3	27%
THEFT FROM MOTOR VEHICLES	36	32	4	13%
THEFT/HANDLING	605	577	28	5%
THEFT OF MOTOR VEHICLES	9	13	-4	-31%
VIOLENCE OFFENCES	256	317	-61	-19%
Sum:	1261	1326	-65	-5%

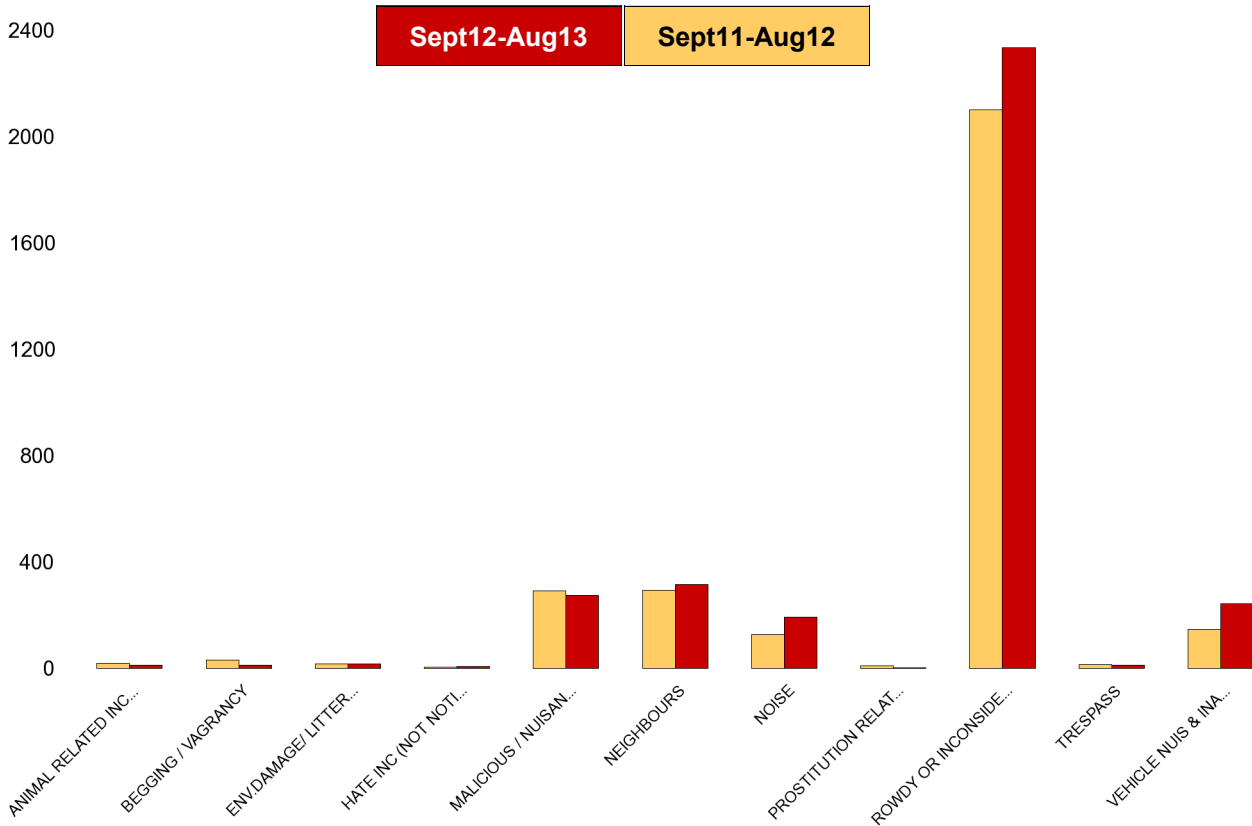
No of Cleared Up Crimes	Detection Rate (Past 12 Months)
5	24%
17	57%
42	22%
5	50%
56	95%
12	71%
5	56%
2	14%
2	6%
320	53%
2	22%
124	48%
592	47%



Kettering Town Forum Report

Kettering Town SCT - ASB

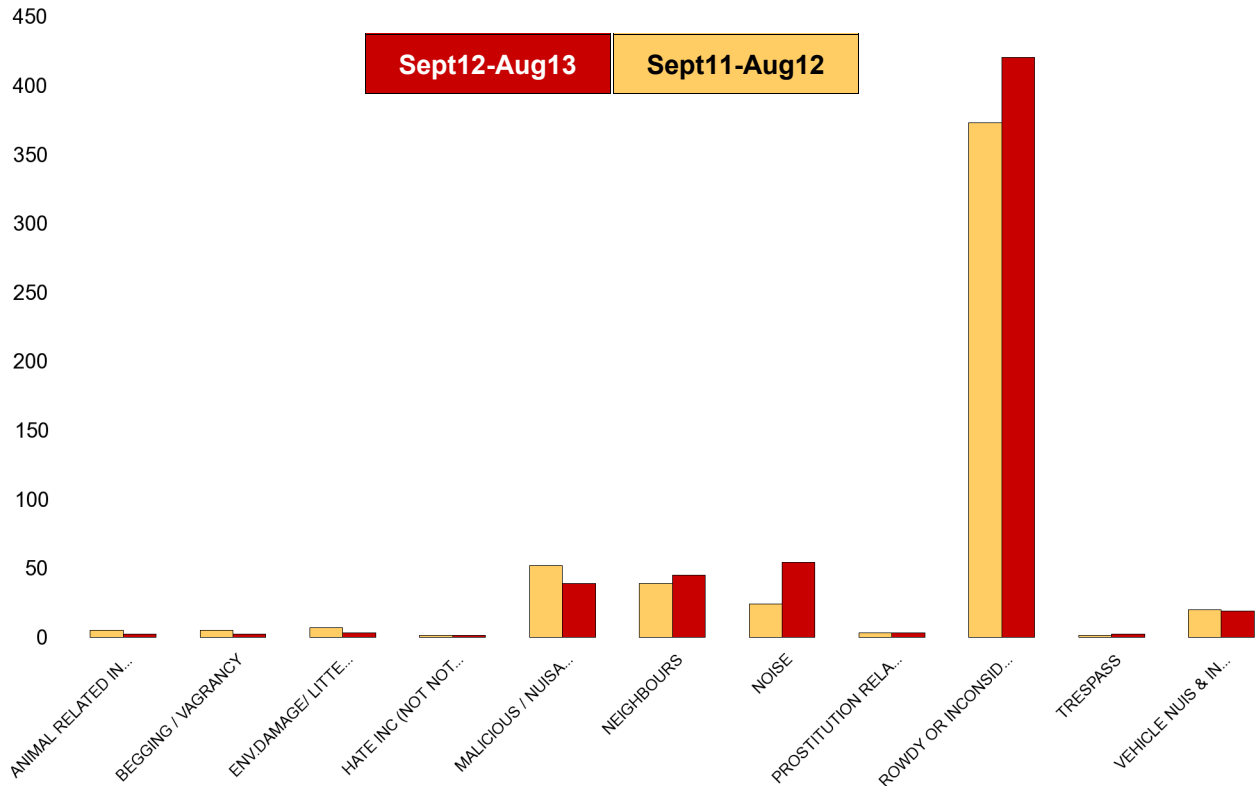
NSIR Closing Cat. 1 Desc	No of Incidents (Sept12-Aug13)	No of Incidents (Sept11-Aug12)	+/- Incidents	% Change Incidents
ANIMAL RELATED INC ANTI-SOCIAL	14	20	-6	-30%
BEGGING / VAGRANCY	14	33	-19	-58%
ENV.DAMAGE/ LITTER/ NEEDLES	19	18	1	6%
HATE INC (NOT NOTIFIABLE CRIME	9	7	2	29%
MALICIOUS / NUISANCE COMMS	277	292	-15	-5%
NEIGHBOURS	317	296	21	7%
NOISE	194	130	64	49%
PROSTITUTION RELATED ACTIVITY	4	10	-6	-60%
ROWDY OR INCONSIDERATE BEHAV	2338	2103	235	11%
TRESPASS	13	16	-3	-19%
VEHICLE NUIS & INAPPROP VEH US	244	149	95	64%
Sum:	3443	3074	369	12%



Kettering Town Forum Report

All Saints

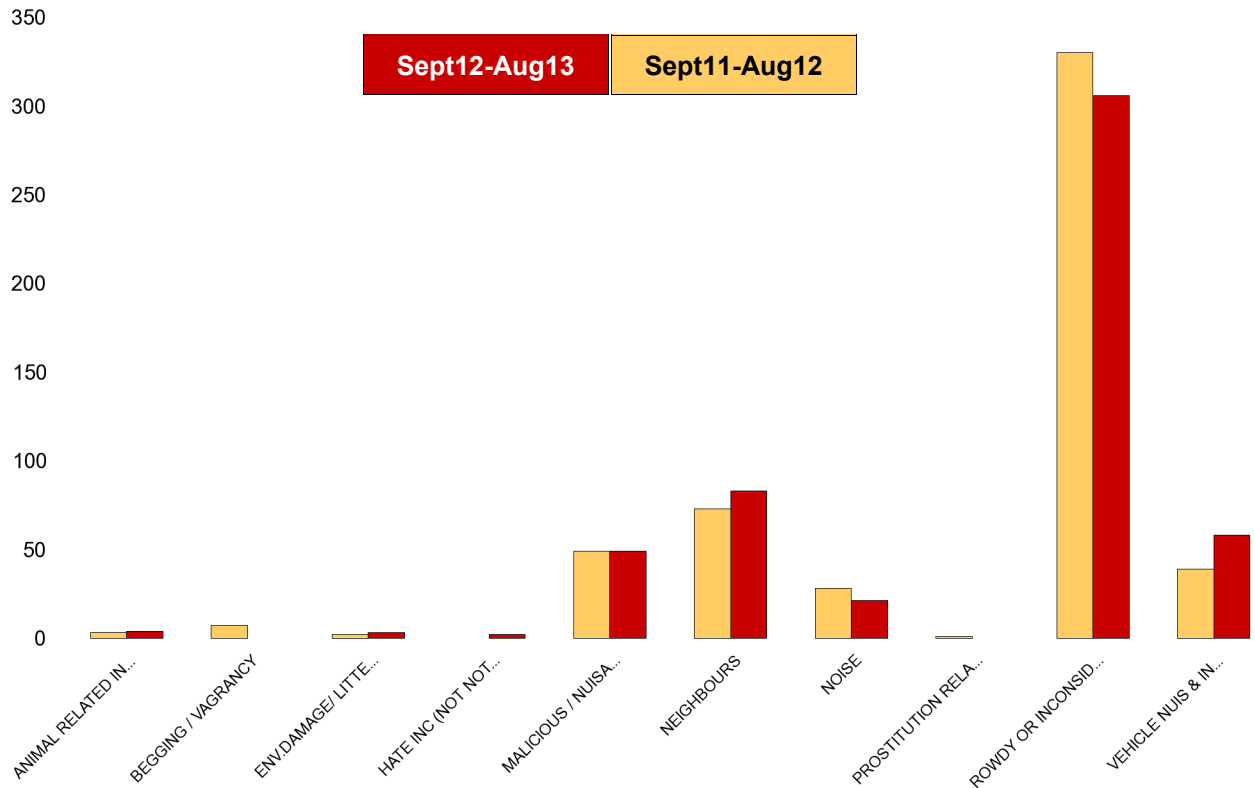
NSIR Closing Cat. 1 Desc	No of Incidents (Sept12-Aug13)	No of Incidents (Sept11-Aug12)	+/- Incidents	% Change Incidents
ANIMAL RELATED INC ANTI-SOCIAL	2	5	-3	-60%
BEGGING / VAGRANCY	2	5	-3	-60%
ENV.DAMAGE/ LITTER/ NEEDLES	3	7	-4	-57%
HATE INC (NOT NOTIFIABLE CRIME	1	1	0	0%
MALICIOUS / NUISANCE COMMS	39	52	-13	-25%
NEIGHBOURS	45	39	6	15%
NOISE	54	24	30	125%
PROSTITUTION RELATED ACTIVITY	3	3	0	0%
ROWDY OR INCONSIDERATE BEHAV	420	373	47	13%
TRESPASS	2	1	1	100%
VEHICLE NUIS & INAPPROP VEH US	19	20	-1	-5%
Sum:	590	530	60	11%



Kettering Town Forum Report

Avondale Grange

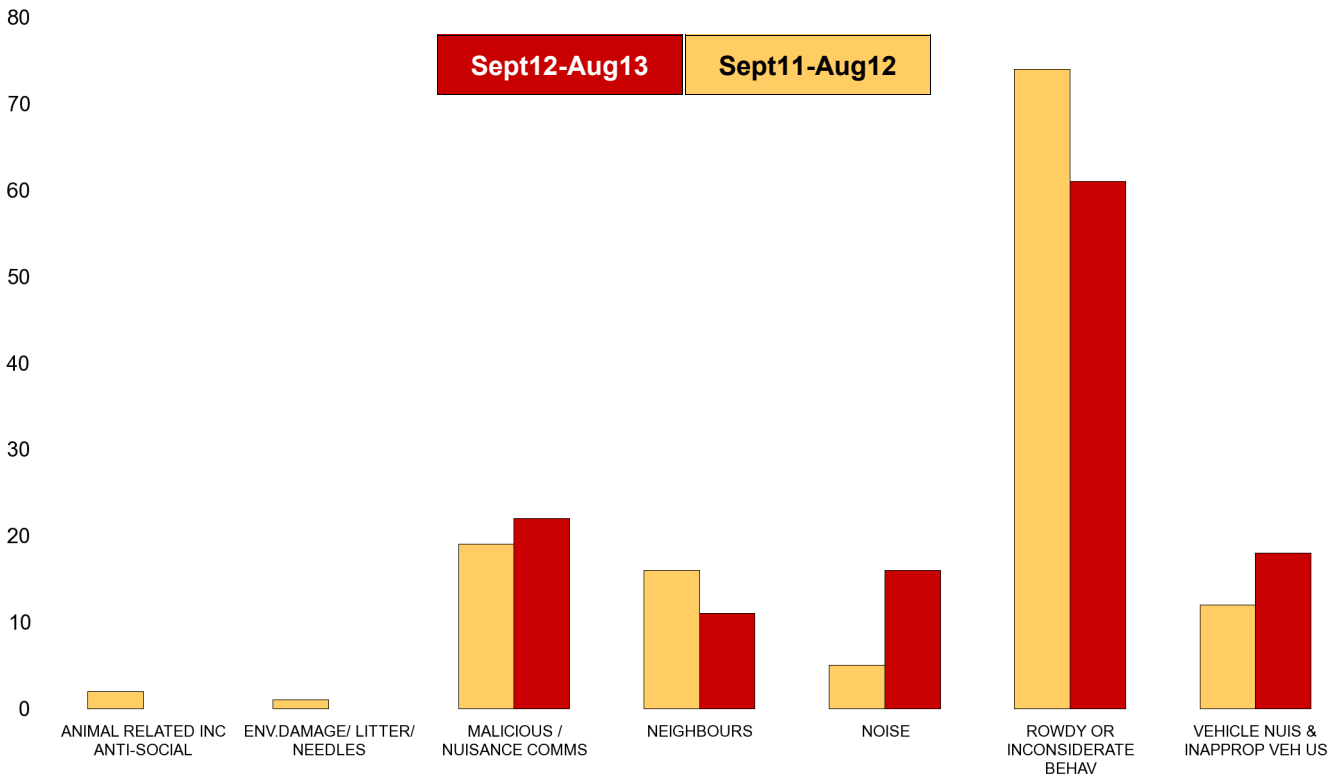
NSIR Closing Cat. 1 Desc	No of Incidents (Sept12-Aug13)	No of Incidents (Sept11-Aug12)	+/- Incidents	% Change Incidents
ANIMAL RELATED INC ANTI-SOCIAL	4	3	1	33%
BEGGING / VAGRANCY	0	7	-7	-100%
ENV.DAMAGE/ LITTER/ NEEDLES	3	2	1	50%
HATE INC (NOT NOTIFIABLE CRIME	2	0	2	0%
MALICIOUS / NUISANCE COMMS	49	49	0	0%
NEIGHBOURS	83	73	10	14%
NOISE	21	28	-7	-25%
PROSTITUTION RELATED ACTIVITY	0	1	-1	-100%
ROWDY OR INCONSIDERATE BEHAV	306	330	-24	-7%
VEHICLE NUIS & INAPPROP VEH US	58	39	19	49%
Sum:	526	532	-6	-1%



Kettering Town Forum Report

Brambleside

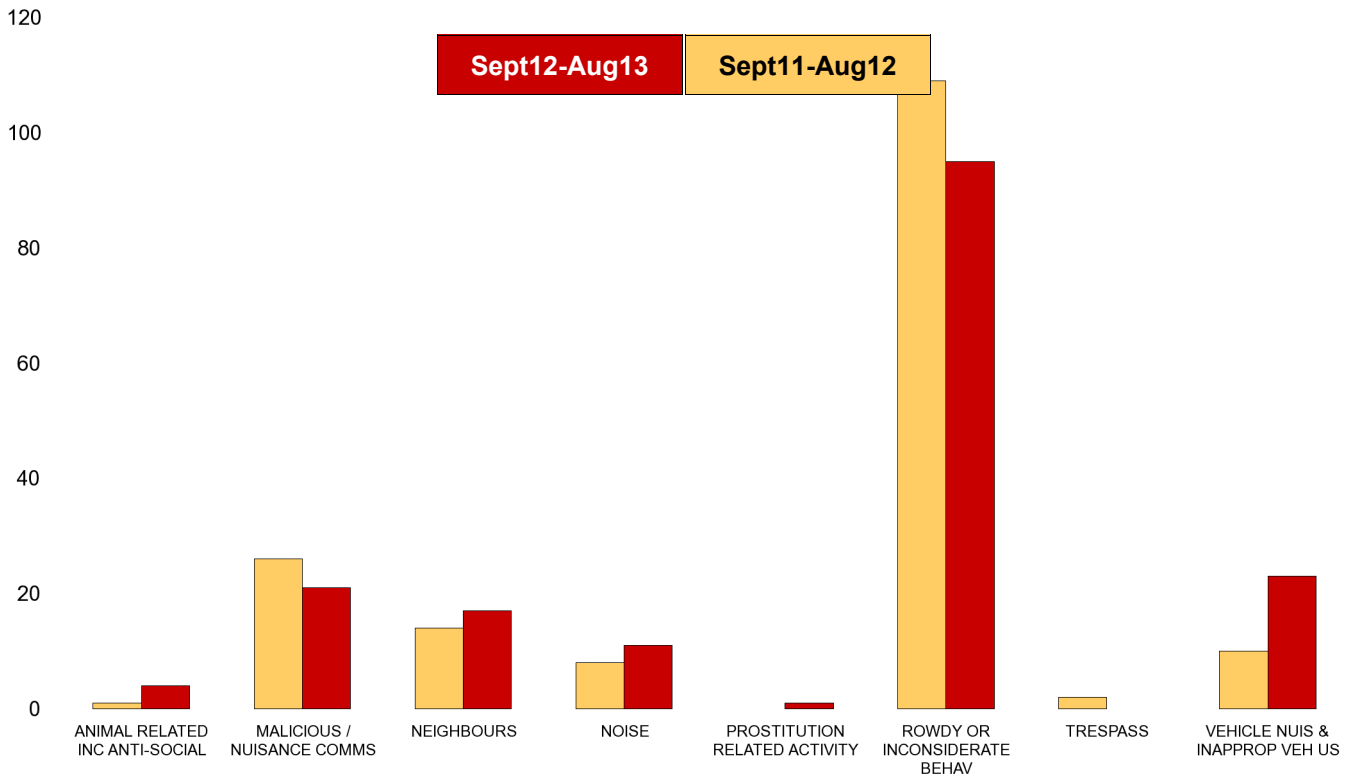
NSIR Closing Cat. 1 Desc	No of Incidents (Sept12-Aug13)	No of Incidents (Sept11-Aug12)	+/- Incidents	% Change Incidents
ANIMAL RELATED INC ANTI-SOCIAL	0	2	-2	-100%
ENV.DAMAGE/ LITTER/ NEEDLES	0	1	-1	-100%
MALICIOUS / NUISANCE COMMS	22	19	3	16%
NEIGHBOURS	11	16	-5	-31%
NOISE	16	5	11	220%
ROWDY OR INCONSIDERATE BEHAV	61	74	-13	-18%
VEHICLE NUIS & INAPPROP VEH US	18	12	6	50%
Sum:	128	129	-1	-1%



Kettering Town Forum Report

Ise Lodge

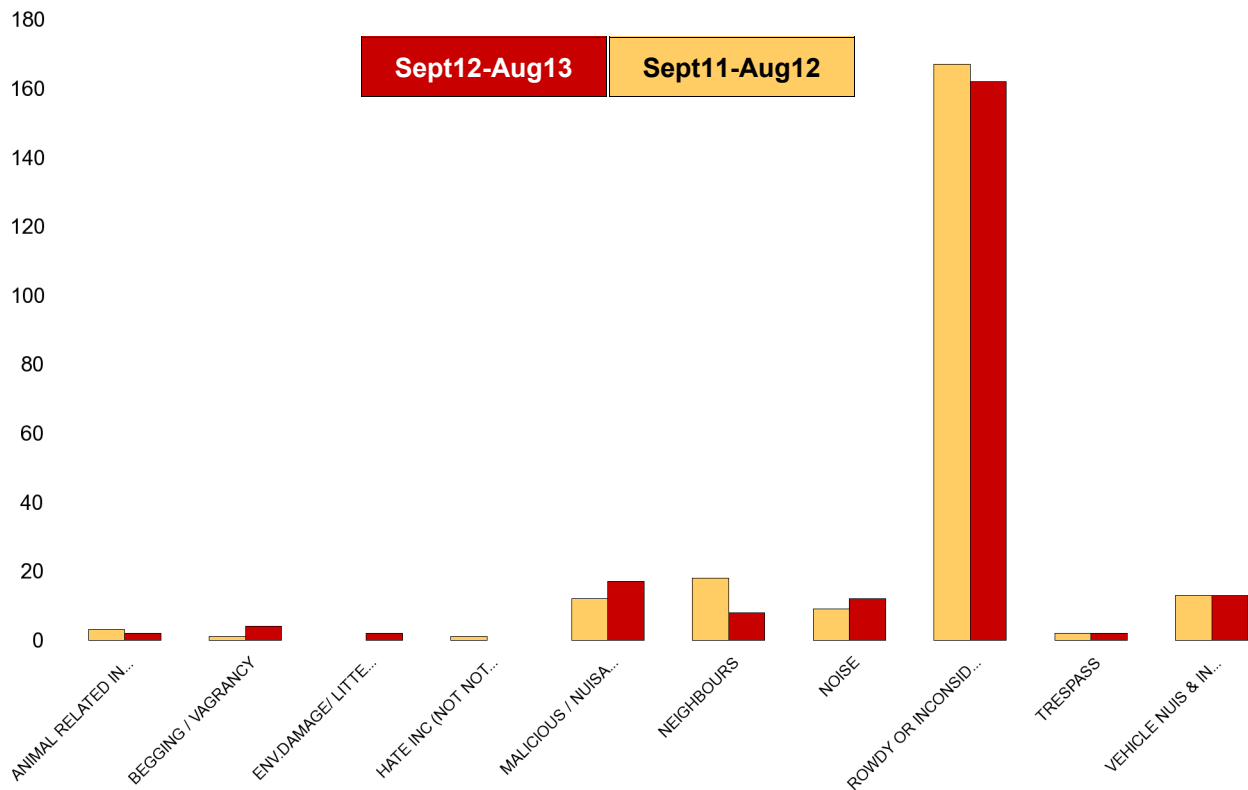
NSIR Closing Cat. 1 Desc	No of Incidents (Sept12-Aug13)	No of Incidents (Sept11-Aug12)	+/- Incidents	% Change Incidents
ANIMAL RELATED INC ANTI-SOCIAL	4	1	3	300%
MALICIOUS / NUISANCE COMMS	21	26	-5	-19%
NEIGHBOURS	17	14	3	21%
NOISE	11	8	3	38%
PROSTITUTION RELATED ACTIVITY	1	0	1	0%
ROWDY OR INCONSIDERATE BEHAV	95	109	-14	-13%
TRESPASS	0	2	-2	-100%
VEHICLE NUIS & INAPPROP VEH US	23	10	13	130%
Sum:	172	170	2	1%



Kettering Town Forum Report

Northfield

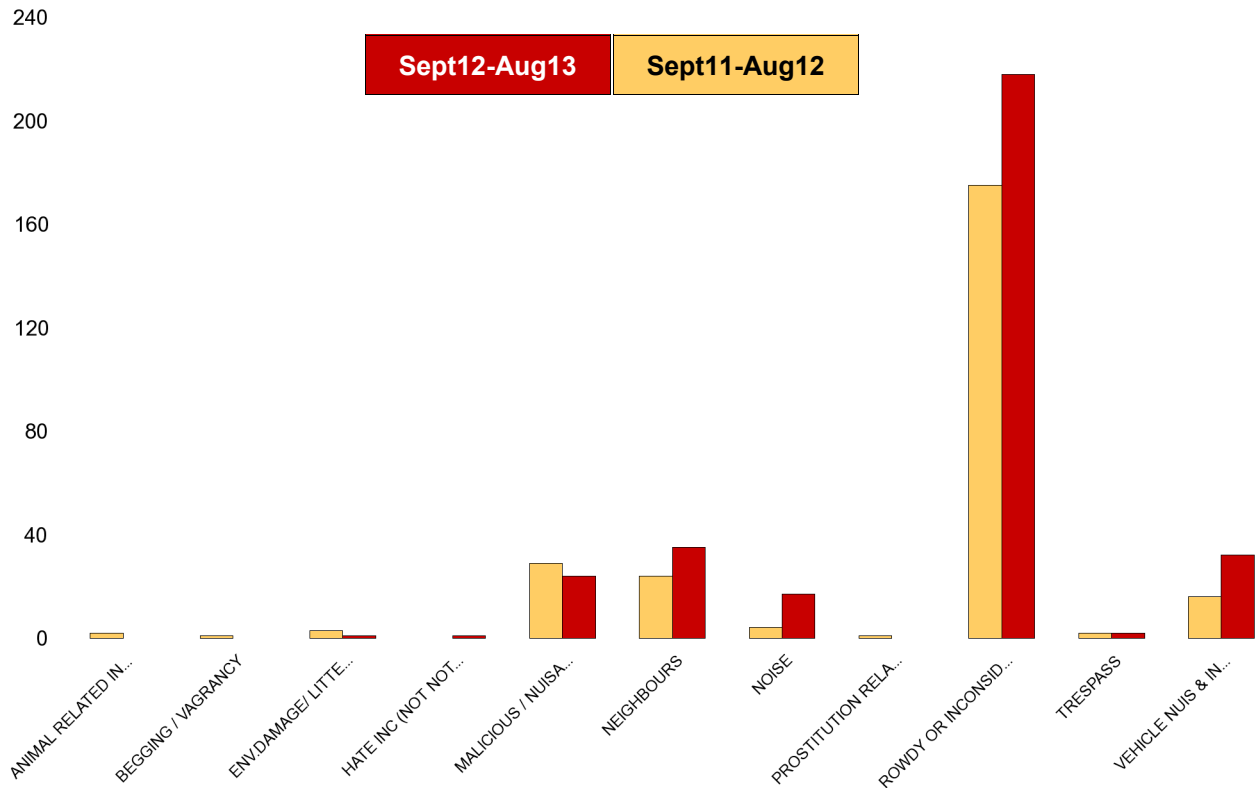
NSIR Closing Cat. 1 Desc	No of Incidents (Sept12-Aug13)	No of Incidents (Sept11-Aug12)	+/- Incidents	% Change Incidents
ANIMAL RELATED INC ANTI-SOCIAL	2	3	-1	-33%
BEGGING / VAGRANCY	4	1	3	300%
ENV.DAMAGE/ LITTER/ NEEDLES	2	0	2	0%
HATE INC (NOT NOTIFIABLE CRIME	0	1	-1	-100%
MALICIOUS / NUISANCE COMMS	17	12	5	42%
NEIGHBOURS	8	18	-10	-56%
NOISE	12	9	3	33%
ROWDY OR INCONSIDERATE BEHAV	162	167	-5	-3%
TRESPASS	2	2	0	0%
VEHICLE NUIS & INAPPROP VEH US	13	13	0	0%
Sum:	222	226	-4	-2%



Kettering Town Forum Report

Pipers Hill

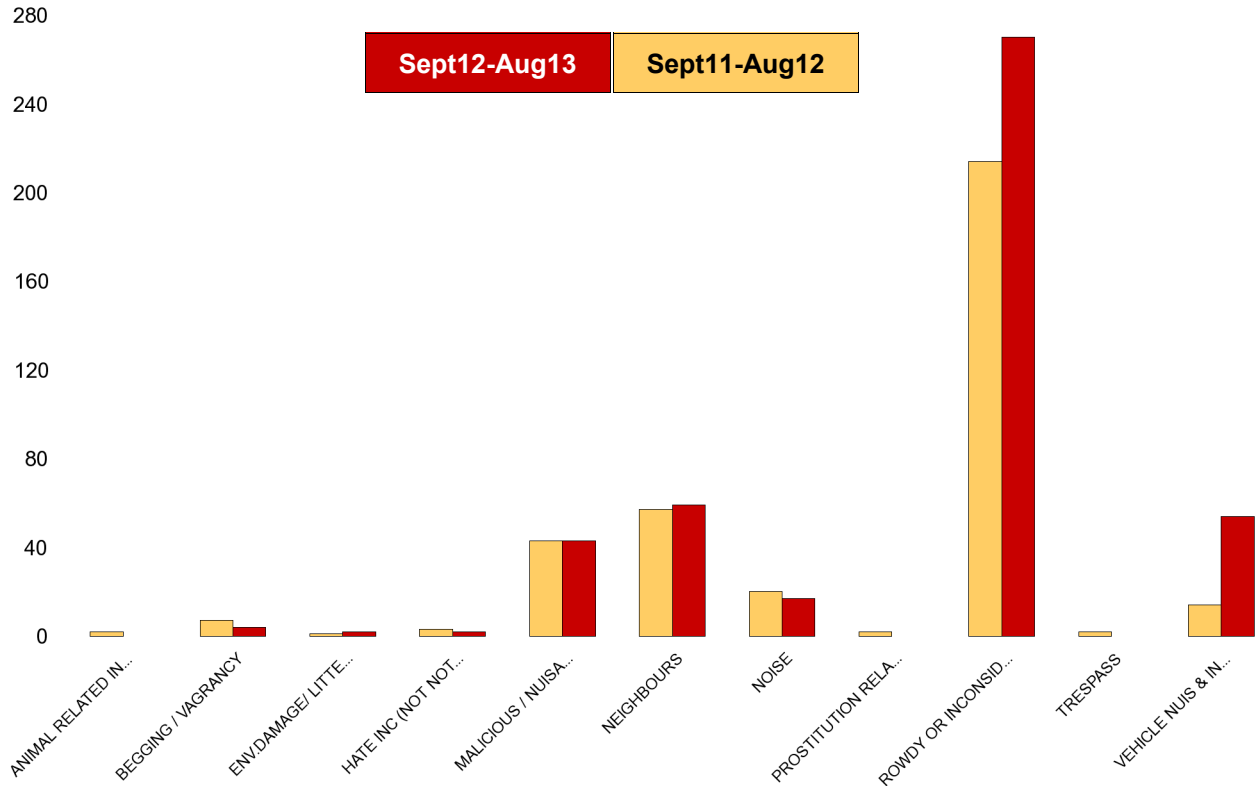
NSIR Closing Cat. 1 Desc	No of Incidents (Sept12-Aug13)	No of Incidents (Sept11-Aug12)	+/- Incidents	% Change Incidents
ANIMAL RELATED INC ANTI-SOCIAL	0	2	-2	-100%
BEGGING / VAGRANCY	0	1	-1	-100%
ENV.DAMAGE/ LITTER/ NEEDLES	1	3	-2	-67%
HATE INC (NOT NOTIFIABLE CRIME	1	0	1	0%
MALICIOUS / NUISANCE COMMS	24	29	-5	-17%
NEIGHBOURS	35	24	11	46%
NOISE	17	4	13	325%
PROSTITUTION RELATED ACTIVITY	0	1	-1	-100%
ROWDY OR INCONSIDERATE BEHAV	218	175	43	25%
TRESPASS	2	2	0	0%
VEHICLE NUIS & INAPPROP VEH US	32	16	16	100%
Sum:	330	257	73	28%



Kettering Town Forum Report

St Michaels and Wicksteed

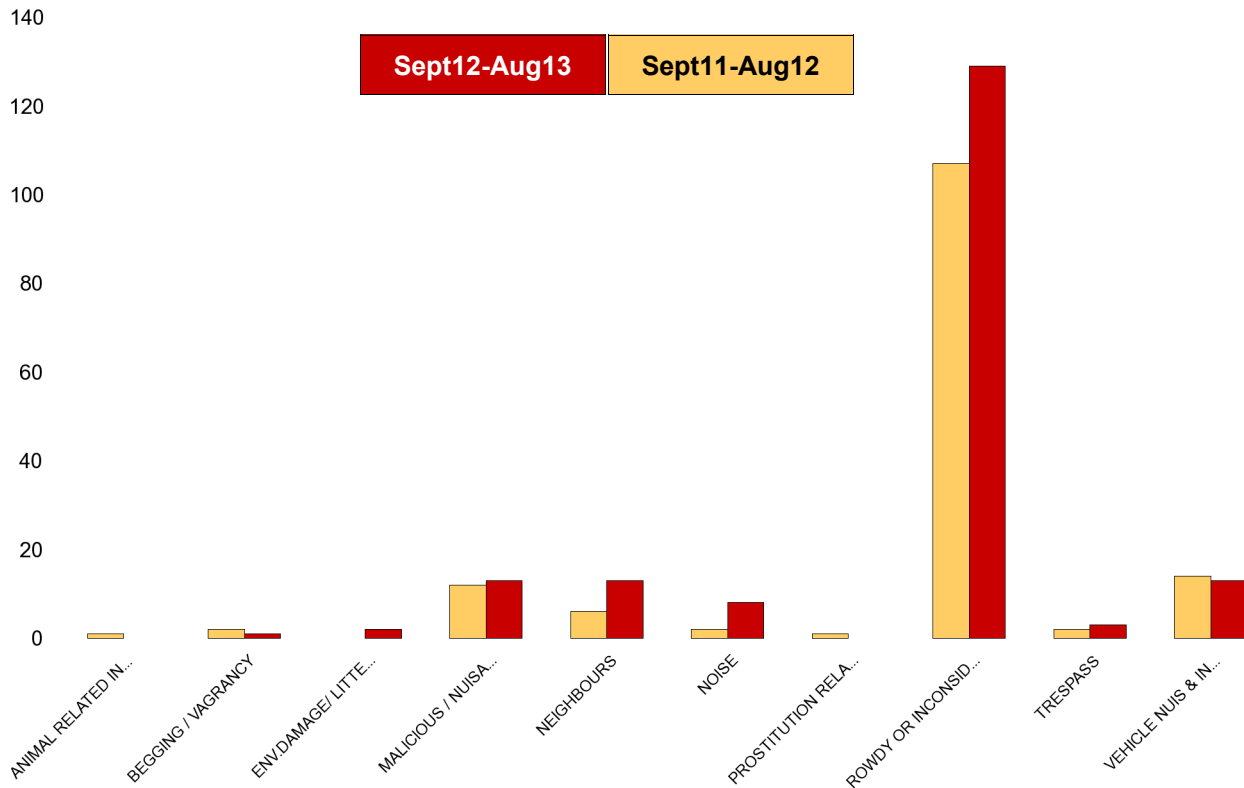
NSIR Closing Cat. 1 Desc	No of Incidents (Sept12-Aug13)	No of Incidents (Sept11-Aug12)	+/- Incidents	% Change Incidents
ANIMAL RELATED INC ANTI-SOCIAL	0	2	-2	-100%
BEGGING / VAGRANCY	4	7	-3	-43%
ENV.DAMAGE/ LITTER/ NEEDLES	2	1	1	100%
HATE INC (NOT NOTIFIABLE CRIME	2	3	-1	-33%
MALICIOUS / NUISANCE COMMS	43	43	0	0%
NEIGHBOURS	59	57	2	4%
NOISE	17	20	-3	-15%
PROSTITUTION RELATED ACTIVITY	0	2	-2	-100%
ROWDY OR INCONSIDERATE BEHAV	270	214	56	26%
TRESPASS	0	2	-2	-100%
VEHICLE NUIS & INAPPROP VEH US	54	14	40	286%
Sum:	451	365	86	24%



Kettering Town Forum Report

St Peters

NSIR Closing Cat. 1 Desc	No of Incidents (Sept12-Aug13)	No of Incidents (Sept11-Aug12)	+/- Incidents	% Change Incidents
ANIMAL RELATED INC ANTI-SOCIAL	0	1	-1	-100%
BEGGING / VAGRANCY	1	2	-1	-50%
ENV.DAMAGE/ LITTER/ NEEDLES	2	0	2	0%
MALICIOUS / NUISANCE COMMS	13	12	1	8%
NEIGHBOURS	13	6	7	117%
NOISE	8	2	6	300%
PROSTITUTION RELATED ACTIVITY	0	1	-1	-100%
ROWDY OR INCONSIDERATE BEHAV	129	107	22	21%
TRESPASS	3	2	1	50%
VEHICLE NUIS & INAPPROP VEH US	13	14	-1	-7%
Sum:	182	147	35	24%



Kettering Town Forum Report

William Knibb

NSIR Closing Cat. 1 Desc	No of Incidents (Sept12-Aug13)	No of Incidents (Sept11-Aug12)	+/- Incidents	% Change Incidents
ANIMAL RELATED INC ANTI-SOCIAL	2	1	1	100%
BEGGING / VAGRANCY	3	10	-7	-70%
ENV.DAMAGE/ LITTER/ NEEDLES	6	4	2	50%
HATE INC (NOT NOTIFIABLE CRIME	3	2	1	50%
MALICIOUS / NUISANCE COMMS	49	50	-1	-2%
NEIGHBOURS	46	49	-3	-6%
NOISE	38	30	8	27%
PROSTITUTION RELATED ACTIVITY	0	2	-2	-100%
ROWDY OR INCONSIDERATE BEHAV	677	554	123	22%
TRESPASS	4	5	-1	-20%
VEHICLE NUIS & INAPPROP VEH US	14	11	3	27%
Sum:	842	718	124	17%

