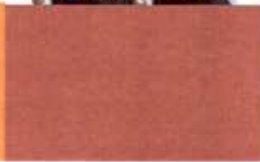
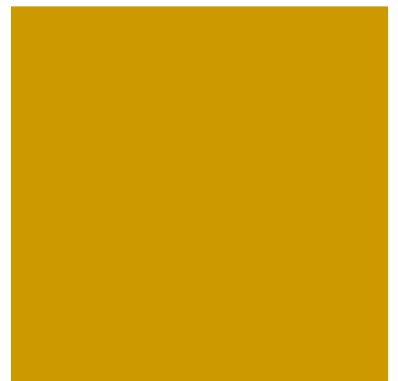
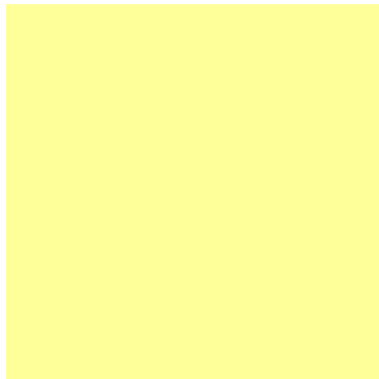




kettering
borough



community safety partnership
THREE YEAR PARTNERSHIP PLAN



**2013
to
2016**

KETTERING COMMUNITY SAFETY STRATEGY 2013 - 2016

GLOSSARY OF TERMS

A&E	- Hospital Accident and Emergency Department
ABC	- Anti-social Behaviour Contract
ANPR	- Automatic Number Plate Recognition – a CCTV system
Aquarius	- A charitable organization and drug and alcohol provider who cater for the 18+ age group
ARC Course	- Action Reaction Consequences (a week long course run by the Fire Service working with young people)
ASBO	- Anti-social Behaviour Order
ASBU	- Anti-social Behaviour Unit
BBPA	- British Beer and Pub Association
BCS	- British Crime Survey
BCU	- Police Basic Command Unit
BLAST	- Burton Latimer Anti-Social Behaviour Team
CAF	- Common Assessment Framework which is an assessment tool which is used by the different agencies who work with children and families to ensure a standardized and common approach
CAFICAS	- Child and Family Courts Advisory Service
CAN	- Provides help for anyone concerned about alcohol, drugs and homelessness
CBO	- Community Beat Officer
CCTV	- Closed Circuit Television systems
CSP	- Community Safety Partnership
CPA	- Crime Pattern Analysis
CPDA	- Police Crime Prevention Design Advisors
CPS	- Crown Prosecution Service
CSS	- Consultation Support Service
CSO	- Community Safety Officer
DAAT	- Northamptonshire Drug and Alcohol Action Team

KETTERING BOROUGH COMMUNITY SAFETY PARTNERSHIP PLAN 2013-2016

DIP	- Drug Intervention Programme
EWO	- Education Welfare Officer
EWS	- Education Welfare Service
IDVA	- Independent Domestic Violence Advisors
IQUANTA	- BCU and CSP Crime Data provided by Home Office
KBC	- Kettering Borough Council
KBCI	- Kettering Borough Crime Initiative
KPI	- Key Performance Indicator
LEN	- Life Education Northamptonshire
LPA	- Local Planning Authority
LSP	- Local Strategic Partnership
MAPPA	- Multi-agency Public Protection Panel – deals with high risk prisoners who have been recently released into the community
MAPPOM	- Multi-Agency Prolific and Priority Offender Management Meetings
MARAC	- Multi-Agency Risk Assessment Conferences
MKSM	- Milton Keynes South Midlands Strategy
NALC	- Northamptonshire Association of Local Councils
NC	- Neighbourhood Co-ordination
NCC	- Northamptonshire Council Council
NCJB	- Northamptonshire Criminal Justice Board
NDAS	- Northamptonshire Drug and Alcohol Service
NOMS	- National Offender Management Service
NPYD	- Northamptonshire Police Young Detectives scheme
NREC	- Northamptonshire Rights and Equality Council
NR	- Neighbourhood Renewal
NTA	- National Treatment Agency
PCSO	- Police Community Support Officer
PCT	- Primary Care Trust
PPO	- National/Local Prolific and other Priority Offender Strategy

KETTERING BOROUGH COMMUNITY SAFETY PARTNERSHIP PLAN 2013-2016

- Pubwatch** - **Voluntary scheme to exchange information between licencees about incidents, threats of trouble and undesirable pub users**
- RCGP** - **Royal College of General Practitioners**
- RSL** - **Registered Social Landlords (Housing Associations)**
- SAC** - **Serious Acquisitive Crime**
- SCT** - **Safer Community Team**
- SDVC** - **Specialist Domestic Violence Courts**
- Solve It** - **Provides family support, counselling and education on volatile substance abuse**
- STAC** - **Strategic Advisory Committee**
- Sub Zero** - **Provides specialist treatment for drug and alcohol use for the under 19's**
- YMCA** - **Young Mens Christian Association**
- YOS** - **Youth Offending Service**
- YOT** - **Youth Offending Team**

CONTENTS

	<u>Page</u>
Introduction	1
Background	2
Effective Partnership Working	3
Current Community Safety/Crime Reduction Work in Kettering Borough	4
Partnership Structure Chart	5
Progress Since Last Assessment	6-7
Links with other Strategies and Plans	8
Options for Action – Towards a Safer Kettering Borough	9-10
Community Engagement	11-13
How Performance Against Priorities Will be Measured	14-15
Aims, Strategic Objectives and Targets	Appendix ‘A’
Actions Plans	Appendix ‘B’

Introduction

This is the Kettering Borough Community Safety Partnership Three Year Partnership Plan. The Crime and Disorder Act 1998 as amended by the Police Reform Act 2002, Clean Neighbourhoods and Environment Act 2005 and Police and Crime Act 2009 requires that the Borough Council, County Council, Police, Fire and Rescue Authority, NHS Northamptonshire and Probation Service jointly develop and implement a strategy to tackle crime and disorder including anti-social and other behaviour adversely affecting the local environment, as well as the misuse of drugs and to prevent re-offending within Kettering Borough. They are required to work in co-operation with a variety of others and to work closely with the Drug and Alcohol Action Team.

In Kettering Borough we are fully committed to working in partnership with a large number of statutory agencies, voluntary organisations and the business community. Involvement of the local community is also essential and community spirit will continue to be harnessed into making Kettering Borough a safe place to live, work and visit. Such involvement will include that of 'hard to reach' groups, individuals and communities. It is recognised that many aspects and areas of community life can help combat the destructive and negative aspects of crime, disorder, anti-social behaviour, other behaviour adversely affecting the local environment and misuse of drugs.

This Plan is effective for three years, from April 2013 – March 2016 and it aligns with other planning cycles. It will be revised annually thus reflecting any new priorities emerging from annual strategic assessments. Also included will be community priorities.

Set out within this document is how the Plan was arrived at, what the strategic priorities are and why they have been chosen. It contains the action plans for implementing the objectives and targets contained within the Plan. They will inevitably change as the Plan is implemented and reviewed.

The Kettering Borough Three Year Partnership Plan is a living working document. The targets represent a real but realistic challenge for the lead agencies, and other groups and organisations participating alongside them. However, members of the Community Safety Partnership are confident it will achieve the aim to reduce crime and disorder including anti-social and other behaviour adversely affecting the local environment, as well as the misuse of drugs and to prevent re-offending, and ensure that Kettering Borough is a safe place for people to live, work and visit.

Background

It is a statutory requirement that each year, the partnership shall prepare a strategic assessment to assist in producing or revising the partnership plan. The primary aim of the partnership strategic assessment is to provide a long-term, high level evaluation of anticipated crime and disorder; misuse of drugs, alcohol and other substances; anti-social behaviour; and, behaviour adversely affecting the environment in order to:-

- Drive the business of the Community Safety Partnership and Police Basic Command Unit;
- Aid and support co-ordinated strategic business planning and resource allocation;
- Aid the formation of priorities which will identify prevention and reduction, community safety, information and enforcement delivery plans;
- Identify knowledge and information gaps and requirements and, from this, develop an action and/or work plan to enable future data collection and the commissioning of further research and analysis.

A range of partner data and information requirements was identified resulting in the development of a data collection plan.

The Partnership Strategic Assessment included:

- Analysis of the level and patterns of crime, disorder and substance misuse;
- Changes in the levels and patterns of crime, disorder and substance misuse;
- Analysis of why these changes have occurred;
- Assessment of the extent to which the previous year's plan was implemented; and
- Views from the community on matters that need to be prioritised.

Effective Partnership Working

Partnership working has contributed to a sustained fall in crime over recent years. However, the landscape in which Community Safety Partnerships deliver has changed considerably since the introduction of the Crime and Disorder Act 1998. Following a formal review of the partnership provisions of that Act, statutory requirements form part of the Hallmarks of Effective Partnerships, which represent the key aspects of partnership working that underpin effective delivery through partnerships. The six Hallmarks are:-

- Empowered and effective leadership;
- Visible and constructive accountability;
- Intelligence-led business processes;
- Effective and responsive delivery structures;
- Engaged communities; and
- Appropriate skills and knowledge

* * * *

The development of the Community Safety Partnership's Three Year Partnership Plans has been undertaken in the context of the national, regional and local policies and frameworks:

- Neighbourhood Policing (Safer Community Teams)
- Neighbourhood and Rural Renewal/Neighbourhood Management/Neighbourhood Co-ordination
- Assessments of Policing and Community Safety (APACS)
- National Crime Strategy
- National Alcohol Strategy
- National Drug Strategy
- Northamptonshire Criminal Justice Board Delivery Plan
- The Growth Agenda – Milton Keynes and South Midlands Growth Plan

Current Community Safety/Crime Reduction Work in Kettering Borough

Kettering Borough has a history of extremely good partnership working relating to community safety and tackling crime and disorder (including anti-social behaviour) and the misuse of drugs. This has been achieved through the co-operation of a number of organisations, agencies and people striving to make the Borough a safe place in which to live, work and visit.

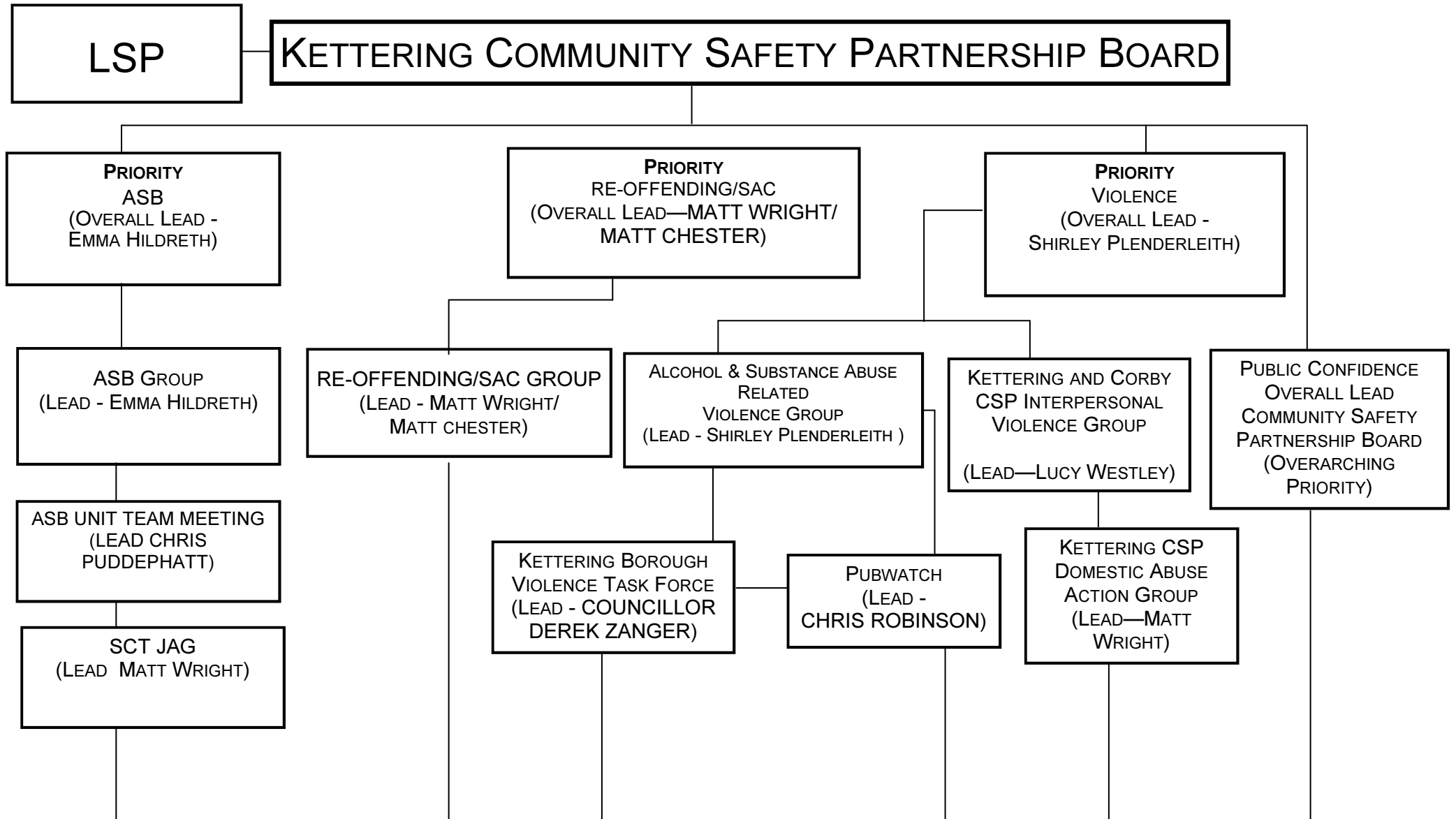
Current partnership arrangements include:

- The Local Strategic Partnership, which is built on a genuine local commitment to work across all agencies and with the community to improve the quality of life for people in the Borough
- The Community Safety Partnership (CSP). Membership of this is listed on the outside cover of this document. The CSP is accountable to the LSP as well as generally to local people.

Other groups involved in local community safety initiatives include:

- Age Concern Handyperson Scheme
- Aquarius
- CSP Reducing Re-offending and Serious Acquisitive Crime Group
- CSP Anti-social Behaviour Group
- CSP Alcohol Related Violence Group
- Kettering and Corby CSP Interpersonal Violence Delivery Group
- Kettering Borough Crime Initiative (Retail Crime Initiative)
- Kettering Borough Violence Task Force
- Kettering Town Pubwatch
- Northampton Care and Repair
- Northamptonshire Sunflower Centre
- Service 6
- Solve It
- Victim Support
- Watch Schemes

SAFER COMMUNITIES



Progress Since Last Assessment

(2012-2015 Crime and Disorder and Drugs Strategy)

Performance at the end of March 2013 was as follows:

- All Crime
Increase of 321 crimes (5.2% increase)
- Burglary Dwelling
Increase of 178 crimes (61% increase)
- Vehicle Crime
Increase of 91 crimes (18.8% increase)
- Serious Acquisitive Crime
Increase of 251 crimes (29.3% increase)
- Violence Offences
Reduction of 69 offences (4.9% reduction)
- ASB reported to the Police
Reduction of 73 incidents (1.5 % reduction)
- Criminal Damage
Reduction of 2 crimes (0.2% reduction)

Some activities that have contributed to the successes include:-

- Targeting areas with above average crime.
- Improved management of prolific offenders.
- Holding Weeks of Action in partnership with other agencies and community bodies
- A range of youth activities.
- Working with young people at risk of offending.
- Targeted outreach youth work.
- Developing new Neighbourhood Watch Schemes.
- Improved home security at vulnerable properties
- Gating and making communal alleyways secure.
- Personal household CCTV initiative.
- Marking property with forensic coding.

KETTERING BOROUGH COMMUNITY SAFETY PARTNERSHIP PLAN 2013-2016

- Launch of “No Cold Call” areas
- Secure by design car parks.
- Improving the service to victims by development of a multi-agency domestic abuse service.
- A range of programmes for victims and perpetrators of domestic abuse.
- Developing the Retail Crime Initiative.
- Developing Kettering Town Pubwatch.
- Use of polycarbonate replacements in Town Centre licensed premises.
- Use of body worn video cameras for use by door supervisors.
- Developing the Street Pastors Scheme
- Providing a Dynamic Emergency Care Centre in Kettering Town Centre
- Designated Public Places Orders assisting in controlling on-street drinking.
- Developing a “fare share” taxi scheme.
- Kettering Borough Council ensuring that the Borough is clean and safe.
- Developing the Kettering Borough CCTV system.
- Use of CCTV in taxis.

Links with Other Strategies and Plans

In order to tackle crime and disorder, including anti-social and other behaviour adversely affecting the local environment as well as the misuse of drugs effectively and in a sustainable way, it is important that the work of the Kettering Borough Community Safety Partnership (CSP) is linked with any other action locally which could contribute to the dual aims of reducing the level of crime and disorder in Kettering Borough and tackling the underlying causes. A number of strategies or plans can contribute to these aims, the most obvious being the Police and Crime Plan. This plan is supported by the work of the Community Safety Partnership. Other plans also have a direct community safety input and these include:-

- Kettering Borough Sustainable Community Strategy
- Northamptonshire Partnership Reducing Re-offending Strategy
- Northamptonshire Youth Justice Plan
- Probation Service Area Plan
- Health Improvement Plan
- Northamptonshire Children and Young People's Partnership Board Plan
- Education Development Plan
- Northamptonshire Interpersonal Violence Strategy
- Northamptonshire County Council Prevent Strategy
- Northamptonshire Community Cohesion Strategy

The Kettering Borough Community Safety Partnership works closely with the Northamptonshire Drug and Alcohol Action Team (DAAT). Objectives within this Partnership Plan 2013-2016 are complementary to the DAAT delivery plans and the Northamptonshire Alcohol Harm Reduction Strategy.

Options for Action – Towards a Safer Kettering Borough

During the life of the 2012-2015 Crime and Disorder and Drug Strategy, a considerable amount of good work has been carried out by a range of agencies to tackle crime and disorder including anti-social and other behaviour adversely affecting the local environment as well as the misuse of drugs within Kettering Borough. This new Three Year Partnership Plan (April 2013 – March 2016) will build upon past achievements and develop new ideas to tackle the priorities.

As always, there will be limited new resources available for new activities in Kettering Borough from any of the participating agencies. Therefore the available resources must be used effectively and targeted towards a limited number of key priorities.

Although this Partnership Plan is for the whole of Kettering Borough the work has focused upon identifying three particular areas.

- ◆ The first is issues – which aspects of each priority area should be the focus of Partnership activity during the next three years.
- ◆ The second is people – whether any particular demographic groups or communities are particularly vulnerable to crime and disorder, and should therefore be a focus of partnership activity during the next three years. Similarly, are there particular demographic groups identified as potential perpetrators of crime and disorder on where we should focus.
- ◆ The third is places – whether any geographic areas are particularly vulnerable to crime and disorder, and should therefore be a focus of partnership activity during the next three years.

An evidence-based, problem-solving approach to local problems will be used with all community safety activity. This is to recognise that the effective and sustainable resolution of a problem requires us to tackle the underlying cause.

This means following an approach identifying problems and following through with a multi-agency partnership approach to identify underlying causes and find solutions.

We will therefore aim to create a long-term effect, and sustainable impact, by altering the circumstances which lead to criminal and anti-social behaviour, as well as tackling the behaviour itself.

The various issues within Kettering Borough will require time and therefore long-term strategies; in many cases the impact will not be immediate. However, efforts will be made to engage people and agencies in finding solutions to some short-term issues and problems.

KETTERING BOROUGH COMMUNITY SAFETY PARTNERSHIP PLAN 2013-2016

The Partnership Strategic Assessment has been considered by the Kettering Borough Community Safety Partnership who have identified and agreed on a number of strategic priorities/aims for the next three years (April 2013 – March 2016) as follows:-

Anti-social behaviour with a focus on:

- Responding to repeat victims and repeat neighbourhoods
- Acknowledging all communities
- Communication

Violence with the following two strands:

- Domestic abuse
- Alcohol and substance abuse

Reducing re-offending with strands around:

- Drugs and alcohol
- Serious acquisitive crime, with a focus on domestic burglary and vehicle crime

Public confidence

All priorities are inter-connected and central to combating crime and disorder including anti-social and other behaviour adversely affecting the local environment as well as the misuse of drugs within Kettering Borough.

Community Engagement

The Borough of Kettering has complete coverage through 2 Safer Community Teams (SCTs) which provide local communities with a dedicated team of Police Officers who are visible, accessible and known to local people. They work closely with partner agencies and the community to tackle crime and anti-social behaviour problems identified within the local area. The 2 Safer Community Teams are as follows:

- Kettering Town Safer Community Team – covering the area including William Knibb, Northfield, All Saints, Brambleside, Avondale, Warkton, Millbrook, Spinney, Pipers Hill, St Peter's, St Michael's and Wicksteed wards in Kettering.
- Kettering Rural Safer Community Team – covering the area including Barton Seagrave, Burton Latimer, Cranford, Geddington, Grafton Underwood, Little Oakley, Warkton, Weekley, Rothwell, Desborough, Broughton, Ashley, Brampton Ash, Braybrooke, Cransley, Harrington, Mawsley, Newton, Rushton, Stoke Albany, Sutton Bassett, Thorpe Malsor and Wilbarston.

The 2 Safer Community Teams are made up of Police Officers, Police Community Support Officers, Special Constables working closely with Local Authority Elected Members, Housing Managers, Environmental Wardens, Community Development Officers, Fire and Rescue Officers, Housing Associations, Schools, local Residents Associations, Neighbourhood Watch and a variety of others.

Membership of individual SCTs varies according to local need. The aim is to tackle the wide-ranging issues that affect people's quality of life. Whether this is crime, disorder or other social, economic or environmental problems, the aim is to work with the community to find effective, long-term solutions.

An intelligence-led approach is taken to tackling local issues. The Safer Community Teams give people the opportunity to get involved in community safety, and to influence the services provided by Partners in their locality. Public consultation is at the heart of the process with each team identifying the communities' main priorities. Once identified the Team work collectively with the community to find solutions to those problems.

Regular surgeries are held at a wide variety of locations. These include council offices, village halls, community centres, libraries, farmers markets, theatres, shopping centres, supermarkets, licensed premises and various other locations accessible to the local communities.

In Kettering town there is a fit between Neighbourhood Renewal (NR)/ Neighbourhood Co-ordination (NC) areas and the Safer Community Team area, with the 3 NR areas being within the Kettering SCT area. The 3 areas are:-

- Highfields and the Oval (entirely contained within Wicksteed and St Michaels ward).
- Avondale–Grange (covering the whole of this ward and part of Pipers Hill, with a small corner of Brambleside).
- A central Kettering area (covering all of Northfield ward and parts of William Knibb and All Saints wards).

A Joint Action Group serves Neighbourhood Renewal/Neighbourhood Co-ordination as well as SCT purposes, and it is this Group that agrees SCT locally identified priorities on a quarterly basis.

The work of the Safer Community Teams is overseen by the Community Safety Partnership Board and SCT Priorities is a standing item on the agenda.

Regular “Have Your Say” events are held in high footfall areas such as shopping centres, supermarkets and colleges, on both the Kettering Town and Kettering Rural Safer Community Team areas, and these events inform the next locally identified priorities. All events are very much multi-agency and feedback is provided to members of the public with regard to positive action taken.

Every other month a multi-agency team “door knocks” houses in a particular area. This provides the opportunity for agencies to engage with communities, including those communities that are “hard to reach.” Again this informs the locally identified priorities.

There is also a local priorities questionnaire on agency websites. Members of the public can use this form to tell the Partnership what matters most to them in the area where they live or work.

Within Kettering Borough there is also considerable public engagement through Neighbourhood Watch. Every effort is made to maximise take up of Neighbourhood Watch and to provide support to local schemes to enable them to develop. As at the end of December 2012 there were a total number of 330 active schemes operating within the Borough, 25 of which have been set up within the last year. In addition, Dogwatch was launched in March 2012 and there are currently 108 members.

Communication, consultation and community engagement is considered of paramount importance to the Community Safety Partnership. For that reason this Partnership Plan includes a strategic objective to have a co-ordinated approach to communication and consultation.

How Performance Against Priorities will be Measured

The following action plans have been agreed by the Community Safety Partnership. They set out the following:-

- Outcome (the broader consequences of the project outputs and what we are ultimately hoping to achieve).
- Targets (outcome focused – measure whether outcomes have been achieved).
- Action (the means by which the Community Safety Partnership will meet its objectives. Essentially, they list the substantive work that will be undertaken by the partnership).
- Outputs (the products and activities of the project, narrowly defined in terms of what has been done).
- Monitoring indicators (measures used to assess the success of actions in meeting objectives. These measures are a key part of the Community Safety Partnership's monitoring framework and will help to improve accountability to the Community Safety Partnership by providing a more robust means of evidencing what has been achieved).
- Resources (resources required to undertake projects and initiatives defined in terms of cost, staff or skills).
- Lead and participating agencies.
- The timescale applying.
- Risks (potential barriers to the delivery of outputs).
- Current Position (a summary of current progress against the delivery of outputs).

In respect of the action plans, there is a mix in being achievable in short, medium or long term, whilst the strategic priorities tend to show the full three year and longer term aspects. The action plans will change from year to year in pursuit of the main strategic priorities.

The Community Safety Partnership, which meets bi-monthly, will continue to be responsible for directing, co-ordinating, monitoring and evaluating all objectives.

Members of the Partnership are sufficiently senior within their own organisations to be able to commit support and resources to action plans. The Community Safety Partnership ensures that its membership always retains cross-membership with other partnerships. This is to maintain dialogue and have an awareness of what others are doing and enable co-ordination of work.

KETTERING BOROUGH COMMUNITY SAFETY PARTNERSHIP PLAN 2013-2016

The Partnership is provided regularly with the following information. Members of the Partnership are prepared to share further information arising from or affected by the data:

- Bi-monthly – Performance Improvement Documents (these are intended to provide the Community Safety Partnership with relevant information to assist in the monitoring of performance against the targets identified in the Partnership Plan. In doing so, it is intended to identify strategic objectives that require additional improvement and assist in the identification of priorities. Included is iQuanta data).
- Bi-monthly – report on progress against County targets.
- Bi-monthly – reports from Reducing Re-offending and Serious Acquisitive Crime Action Group, Alcohol and Substance Abuse Related Violence Action Group, Anti-social Behaviour Action Group, and Interpersonal Violence Action Group.
- Bi-monthly – report from Kettering Borough Violence Task Force.
- Bi-monthly – reports on CSP high crime areas.
- Bi-monthly – reports on progress of Safer Community Teams.
- Bi-monthly – any relevant research and survey work carried out.
- Annually – information regarding the distribution and activities of Neighbourhood Watch.

Work is in progress to have access to fire/arson data and exclusion/attendance data on a regular basis. There is currently a gap in these important areas of work.

APPENDIX 'A'

KETTERING BOROUGH COMMUNITY SAFETY PARTNERSHIP PLAN 2013-2016 AIMS, STRATEGIC OBJECTIVES AND TARGETS

KETTERING BOROUGH COMMUNITY SAFETY PARTNERSHIP PLAN 2013-2016

Priority	Objective	Outcome	Indicator	Baseline	Target	Change Required from 2012/13 position	Lead
Public Confidence	To reduce concern about crime and ASB	Increase percentage of residents in feeling safe in their local area	Percentage of residents perceiving a high level of anti-social behaviour	9.7% (2012/2013 Police local Survey)	Reduce to below 9%	(2013/2014 Police Local Survey)	CSP Board
		Reduce percentage of residents in with high levels of worry about burglary, vehicle crime, ASB and violent crime					
	To have a coordinated approach to communication and consultation with the public	Public are aware of the positive actions of the Partnership	Dealing with concerns about anti-social behaviour and crime by the local police and council	63.6% (2012/2013 Police Local Survey)	Increase to 66%	(2013/2014 Police Local Survey)	CSP Board
		Public feel that their views inform the actions of the Partnership					

Priority	Objective	Outcome	Indicator	Baseline	Target	Change Required from 2012/13 position	Lead
Anti Social Behaviour	To provide a cleaner environment	A cleaner environment and reduction in signal crimes	Percentage of residents stating that rubbish or litter lying around is a problem in their area.	18.8% (2012/2013 Police Local Survey)	Reduce to below 17.9%	(2013/2014 Police Local Survey)	Brendan Coleman
			Percentage of residents stating that vandalism and graffiti is a problem in their area	12.3% (2012/2013 Police local Survey)	Reduce to below 11.7%	(2013/2014 Police Local Survey)	

KETTERING BOROUGH COMMUNITY SAFETY PARTNERSHIP PLAN 2013-2016

Priority	Objective	Outcome	Indicator	Baseline	Target	Change Required from 2012/13 position	Lead
Anti Social Behaviour	To reduce the number of first time entrants to the Youth Justice System	Reduction of numbers of first time entrants into Youth Justice System	First time entrants to the Youth Justice System aged 10-17	Monitor progress at county level			Emma Hildreth
			Volume reduction in Criminal Damage	1135 (2012/2013)	5% (reduction)	57 (5%)	
	Reduce number of young people (aged up to 18 years) entering the Criminal Justice System or becoming involved in ASB or committing damage	Reduction in ASB	Reduction of numbers of first time entrants into Youth Justice system	Volume reduction in Criminal Damage	1135 (2012/2013)	5% (reduction)	57 (5%)
				Volume reduction in anti-social behaviour repeat victimisation reported to the Police	61 (2012/2013)	10% (reduction)	6 (10%)
		Percentage of residents perceiving a high level of anti-social behaviour		9.7% (2012/2013 Police local Survey)	Reduce to Below 9%	(2013/2014 Police Local Survey)	
	To improve the provision of activities to divert young people from criminal and anti-social activity	Increased numbers of young people engaged in positive activities	Reduction in ASB and first time entrants into Criminal Justice System	First time entrants to the Youth Justice System aged 10-17	Monitor progress at county level		
				Volume reduction in Criminal Damage	1135 (2012/13)	5% (reduction)	57 (5%)
		Percentage of residents perceiving a high level of anti-social behaviour		9.7% (2012/2013 Police Local Survey)	Reduce to below 9%	(2013/2014 Police Local Survey)	
		Percentage of people perceiving teenagers hanging around the streets as a problem		12.9% (2012/2013 Police Local Survey)	Reduce to below 12.3%	(2013/2014 Police Local Survey)	

KETTERING BOROUGH COMMUNITY SAFETY PARTNERSHIP PLAN 2013-2016

<p>To improve the perception of children and young people in Kettering and reduce the perception of ASB in Kettering</p>	<p>Reduction in fear of ASB in Kettering</p>	<p>Percentage of residents perceiving a high level of anti-social behaviour</p>	<p>9.7% (2012/2013 Police Local Survey)</p>	<p>Reduce to below 9%</p>	<p>(2013/2014 Police Local Survey)</p>	
	<p>Improved perceptions of young people among residents</p>					
	<p>Increased interaction between young people and adults in local communities</p>					

KETTERING BOROUGH COMMUNITY SAFETY PARTNERSHIP PLAN 2013-2016

Priority	Objective	Outcome	Indicator	Baseline	Target	Change Required from 2012/13 position	Lead	
Re-Offending	Reduction in the rate of repeat Domestic Burglary victimisation	Reduction in the rate of domestic burglary repeat victimisation	Number of repeat Domestic Burglary victims	13 (2012/13)	6	7	Matt Wright	
			Volume reduction in Burglary Dwelling	470 (2012/13)	15% reduction	70 (15%)		
	To reduce re-offending	Reduction in re-offending rates	Reoffending rate	Monitor progress at county level				
			Volume reduction in Vehicle Crime	574 (2012/13)	15% (reduction)	86 (15%)		
		Reduction in serious acquisitive crime	Volume reduction in Burglary Dwelling	470(2012/13)	15% reduction	70 (15%)		
To reduce vehicle crime	To reduce Vehicle Crime	Volume reduction in Vehicle Crime	574 (2012/13)	15% (reduction)	86 (15%)			

KETTERING BOROUGH COMMUNITY SAFETY PARTNERSHIP PLAN 2013-2016

Priority	Objective	Outcome	Indicator	Baseline	Target	Change Required from 2012/13 position	Lead
Violence	To reduce alcohol related violence in Kettering associated with the night time economy	Reduction in alcohol related violent crime in and around Kettering Town Centre	Volume reduction in violence against the person offences in Kettering Borough	1200 (2012/13)	8% (reduction)	96 (8%)	Shirley Plenderleith
			Volume reduction in violence against the person offences in Kettering Town Centre offences	228 (2012/13)	8% (reduction)	18 (8%)	
Domestic Abuse	To reduce the risk of harm to victims of domestic abuse	Increase in reported incidents	Repeat incidents of domestic violence cases reviewed at MARAC	Monitor progress at county level			Lucy Westley
		Reduce repeat cases at MARAC					

APPENDIX 'B'

KETTERING BOROUGH COMMUNITY SAFETY PARTNERSHIP PLAN 2013 – 2016

ACTIONS PLANS

Strategic Objective: TO REDUCE THE NUMBER OF FIRST TIME ENTRANTS TO THE YOUTH JUSTICE SYSTEM

Outcome: Reduction in numbers of first time entrants to the youth justice system

**Target(s):
To reduce criminal damage within Kettering Borough by 5% by March 2014
To reduce to below 9% the percentage of residents perceiving a high level of anti-social behaviour**

Action		Outputs	Monitoring Indicators	Resources
<p>Increase provision of diversionary activities during school holidays. Focusing on vulnerable areas, Avondale Grange, All Saints, Northfield, William Knibb, Highfield Estate, Desborough and Rothwell</p>		<p>Provision of sustainable coaching and use of local facilities in vulnerable areas</p> <p>Targeted at children aged 13+</p> <p>Partnership referrals direct young people to activities</p>	<p>Monitor progress at County level</p> <p>First time entrants to the Youth Justice System aged 10-17</p> <p>Volume reduction in criminal damage</p> <p>Number of participants taking part in activities</p> <p>Police Local Survey</p>	<p>KBC</p> <p>NCC</p> <p>Youth Works</p>
Lead	Start Date:	End date	Risks	Current Position
Steve Edwards (KBC)	January 2013	March 2014	<p>Low levels of uptake of activities</p> <p>Finance may influence venues</p> <p>Getting the right young people involved from local areas – KEY RISK'</p>	<p>No activity during Easter 2013 due to KBA works. Summer will see activity on North Park and KBA to try and attract young people from Avondale Grange wards into activity.</p> <p>June 2013—planning for summer holidays now. Early Help Forums will assist with getting the right young people involved. 15,000 booklets will go to every school in the Borough, leisure centres, sports centres etc.</p> <p>Youth Works have put on a range of activities at Desborough and Rothwell.</p> <p>Task and Finish Group being set up to address issues on Avondale Grange, being co-ordinated by County Council.</p>

Strategic Objective: TO REDUCE THE NUMBER OF FIRST TIME ENTRANTS TO THE YOUTH JUSTICE SYSTEM

Outcome: Reduction in numbers of first time entrants to the Youth Justice system.

Targets:
To reduce criminal damage within Kettering Borough by 5% by March 2014
To reduce to below 9% the percentage of residents perceiving a high level of anti-social behaviour

Action	Outputs	Monitoring Indicators	Resources
Target Diversionary Activities to Priority Young People most at risk of involvement in crime and ASB	Identify young people to target Divert the target group to activities Scope the range of diversionary activities outside of KBC Monitor take up of diversionary activities Ensure all providers of diversionary activities are encouraged to engage	Monitor progress at County Level First time entrants to the Youth Justice System aged 10-17 Volume reduction in criminal damage Numbers of identified young people engaging in diversionary activities Police Local Survey	SCT staff Schools/PRU KBC YOS/YOS Prevention Groundwork Youth Works

Lead	Start Date:	End date	Risks	Current Position
Cindy Wrighting (Youth Works)/ Steven Edwards (KBC)/ Vicki Ross (NCC)	January 2013	March 2014	Timely leaflets printed for partners Engagement of young people	August 2010 – August 2013 (NCC contract) To engage 350 young people per year in youth work provision across the Kettering area. Currently up to 441 40%+ from Grange, Avondale, William Knibb wards. Mainly delivered through Knibb open access sessions, Wednesday and Friday evenings. January 2013—Turnaround Project run by Youth Works targeting this group. Intensive work with 12 to 15 young people. Referrals from schools and ASB Unit. June 2013—KBA have accessed funding from Sport England to focus Judo in the priority areas of Avondale / Grange and possibly Highfields. These sessions will be after school and linked to the Judo Club based at the William Knibb. William Knibb open 2 evenings per week. There are a range of activities including music, art, sport and bike maintenance. Later this month it will also be open on Friday evenings for music, bands etc.

Strategic Objective: REDUCE NUMBER OF YOUNG PEOPLE (AGED UP TO 18 YEARS) ENTERING THE CRIMINAL JUSTICE SYSTEM OR BECOMING INVOLVED IN ASB OR COMMITTING DAMAGE

Outcome: Reduction in rates of anti-social behaviour and youth offending in Kettering Borough

Target(s):
 To reduce criminal damage within Kettering Borough by 5% by March 2014
 To reduce anti-social behaviour repeat victimisation within Kettering Borough by March 2014
 To reduce to below 9% the percentage of residents perceiving a high level of ASB
 To reduce first time entrants into the criminal justice system
 To reduce re-offending by young people

Action	Outputs	Monitoring Indicators	Resources
To bring about sustainable change in young people's behaviour	Partners to work with young people and families where there is an identified risk of involvement in ASB and/or criminal activity Deliver programmes of intervention to address risk factors identified through assessment	Risk factor scores assessed through use of Onset or Asset Anti-Social Behaviour rates First time entrant rates Re-offending rates Parent engagement 1:1 and in groups Use of RJ by Police & YOS to resolve incidents of crime or ASB Community Payback activities carried out in the Borough Police Local Survey	Early Help Forums Targeted Prevention Team Youth Offending Team

Lead	Start Date:	End date	Risks	Current Position
Vicki Ross (NCC) Chris York (NCC Targeted Prevention) Darren Carson (YOS)	January 2013	March 2014	YOS funding has been reduced for Funding reduced to partner agencies which might affect capacity for integrated working	November 12—PTLP as a service has now ceased. NCC's restructure has shaped support in this area as follows: <ul style="list-style-type: none"> • Early Help Forums to replace LOTS in early 2013—Early Help Forums will replace LOT's and will work in a solution focussed way that promotes integrated responses to individual and community issues at Level 2 and Level 3, that are likely to become complex and require intensive and coordinated responses. • New CAF framework currently being developed which will operate a Level 2 and where concerns are rising. One agreed assessment tool across partners. A whole family assessment to determine the most appropriate components of the intervention required. The CAF team will be part of the local resourcing of the early help services to children young people and families. • Targeted Prevention Team have been appointed to undertake work to prevent children and young people entering the criminal justice system and the care system as part of NCC Early Help Offer. • Troubled Families—In total Kettering Borough has 110 families identified by the Troubled Families data. Data has now been shared with Schools, Local Councils and Partner agencies and two Troubled Families coordinators appointed into post. Lead agencies are currently being asked to come forward and 2 TF Coordinators have been appointed to begin working in April. A further 5 to be recruited early 2013. • Youth Offending Team—YOS are now concentrating on completing reparation with young people at the Green patch community allotment jointly run by Groundwork and KBC. Young people have been involved in painting, conservation and other maintenance tasks on site. Also available should KBC Community Services have any tasks suitable for young people.

Strategic Objective: TO IMPROVE THE PROVISION OF ACTIVITIES TO DIVERT YOUNG PEOPLE FROM CRIMINAL & ANTI-SOCIAL ACTIVITY

**Outcome: Increased numbers of young people engaged in positive activities
Reduction in ASB and first time entrants into CJS**

Target(s):
To reduce criminal damage within Kettering Borough by 5% by March 2014
To reduce to below 9% the percentage of residents perceiving a high level of anti-social behaviour
To reduce to below 12.3% the percentage of people perceiving teenagers hanging around the streets as a problem

Action		Outputs		Monitoring Indicators	Resources
<p>Provide targeted Outreach Youth Work to ASB hotspots to divert young people from ASB and crime with some focus on drug and alcohol issues</p>		<p>Numbers of young people targeted through outreach work. Numbers of young people diverted into youth provision</p> <p>Delivery of "2B" Project</p> <p>Delivery of "Hammered" Project</p> <p>To provide intensive 1:1 mentoring as appropriate</p> <p>To provide quarterly media articles</p> <p>Focus on drug and alcohol issues</p>		<p>First time entrants to the Youth Justice System aged 10-17 – monitor progress at County level</p> <p>Volume reduction in criminal damage</p> <p>Percentage of residents perceiving a high level of anti-social behaviour (Police Local Survey)</p> <p>ASB incidents in targeted areas</p> <p>Number of young people participating in informal education sessions</p>	<p>SLA between Youth Works and KBC</p> <p>£6k per annum over the 4 year period commencing April 2013</p> <p>To be reviewed after 2 years</p>
Lead	Start Date:	End date	Risks	Current Position	
Cindy Wrighting Youth Works/Ann-Marie Lawson Groundwork	January 2013	March 2017	<p>Sustainability of funding</p> <p>Attendance at key partnership meetings to ensure links with CSP and hotspots targeted</p>	<p>£18k KBC and Partnership funding was provided for 2012/2013. Peak risk times were addressed e.g. after school, school holidays, Halloween and bonfire night, and risk locations as these arose.</p> <p>May 2013—Funding bid submitted to Police and Crime Commissioner successful. £12k awarded to provide 2 detached workers, 5 hours per week. In addition, as part of the Project Groundwork will deliver a "2B" Project which will enable them to target young people who are referred or are involved in regular ASB that is impacting on the quality of life of the communities they live within. They will also deliver a version of the "Hammered" Project targeting underage drinking and alcohol misuse, with most of the learning taking place on the streets.</p>	

Strategic Objective: TO IMPROVE THE PERCEPTION OF CHILDREN AND YOUNG PEOPLE IN KETTERING AND REDUCE THE PERCEPTION OF ASB IN KETTERING

Outcome: Reduction in fear of ASB in Kettering Borough
Improved perceptions of young people among residents
Increased interaction between young people and adults in local communities

Target(s):

- To increase to 66% or more the proportion of people who agree that the police and local council are dealing with anti-social behaviour and crime issues that matter to them
- To reduce to below 9% the percentage of residents perceiving a high level of anti-social behaviour
- To reduce to below 12.3% the percentage of people perceiving teenagers hanging around the streets as a problem

Action		Outputs		Monitoring Indicators	Resources
Increased publicity of young people engaging in positive activities and Increase in 'success stories' when young people are diverted from ASB or offending. Focusing on vulnerable areas, in particular Avondale Grange, All Saints, Northfield, William Knibb, Highfield Estate, Desborough and Rothwell		Positive images of young people printed in local paper, SCT posters, and pictures in community centres and libraries Success stories appearing in newspapers, on local radio/tv and web based media websites		Dealing with concerns about anti-social behaviour and crime by local police and council (Police Local Survey) Percentage of residents perceiving a high level of anti-social behaviour (Police Local Survey)	Posters/pictures Staff time to contact media Survey costs ASB Campaigns
Lead	Start Date:	End date	Risks	Current Position	
Naj Mistry (NAYC)	January 2013	March 2014	Lack of engagement from local media Limited completion of surveys	<p>Perceptions of ASB are high in Kettering Borough and do not match the reality of incidents, in particular in Rothwell.</p> <p>Concerns around young people 'hanging around streets' are high, when reality may be that young people are behaving well.</p> <p>Part of Youth Contract is to publicise good news stories.</p> <p>NCC Strategic Grant targeting A6 towns and villages.</p> <p>November 2012 - The Youth Council funded a Young People's Awards evening to celebrate young people's achievements on Wednesday 31st October 2012 at Wicksteed Park. This awards ceremony was in partnership with the Evening Telegraph to maximise coverage.</p> <p>Regular publicity through Police Community Messaging, KBC, YOS, Youth Works and Groundwork.</p>	

Strategic Objective: TO PROVIDE A SAFER CLEANER ENVIRONMENT

<p>Outcome: A safer and cleaner environment and reduction in signal crimes Increase public confidence Utilise public engagement to identify issues and potential solutions</p>	<p>Target(s):</p> <ul style="list-style-type: none"> To increase to 66% or more the proportion of people who agree that the police and local council are dealing with anti-social behaviour and crime issues that matter to them To reduce to below 9% the percentage of residents perceiving a high level of anti-social behaviour To reduce to below 17.9% the percentage of residents stating that rubbish or litter lying around is a problem in their area To reduce to below 11.7% the percentage of residents stating that vandalism and graffiti is a problem in their area
---	--

Action	Outputs	Monitoring Indicators	Resources
<p>To hold Weeks of Action developing the street a week concept, in partnership with other agencies and community bodies, focusing on vulnerable streets</p>	<p>Involve multi agency and community bodies in weeks of action.</p> <p>Multi-agency environmental survey work in hotspot areas to identify issues that require resolution.</p> <p>Restorative interventions delivered for the benefit of victims and the community.</p> <p>Real time identification of local priorities.</p>	<p>Percentage of residents stating that rubbish or litter lying around is a problem in their area</p> <p>Percentage of residents stating that vandalism and graffiti is a problem in their area</p> <p>Number of Restorative interventions in the community</p> <p>Dealing with concerns about anti-social behaviour and crime by the local police and council (Police Local Survey)</p> <p>Percentage of residents perceiving a high level of anti-social behaviour (Police Local Survey)</p> <p>Number of locally identified priorities</p>	<p>Police</p> <p>Kettering Borough Council</p> <p>County Council</p> <p>Probation/YOS</p> <p>Fire and Rescue</p> <p>NHS Northamptonshire</p> <p>Job Centre Plus</p> <p>HM Excise and Customs</p> <p>DWP</p>

Lead	Start Date:	End date	Risks	Current Position
<p>Locally Identified Neighbourhood Week of Action Co-ordinator supported by Police and KBC</p>	<p>January 2013</p>	<p>March 2014</p>	<p>Support from partner agencies</p> <p>Lack of resources</p> <p>Buy in from community</p> <p>Local demographics and engaging with hard to reach groups eg Eastern European communities</p>	<p>In December 2012 “Street a Week” was trialled in Wellington Street and Regent Street in Kettering with agencies working together to share information. A multi-agency referral form was incorporated for use when visiting residents in the locations to establish who was living there, and to highlight any risks and concerns and to therefore allow agencies to work together and share information. This initiative was run again from 25th February -1st March 2013 visiting Wood Street and Havelock Street, again in the All Saints area. The involvement during the week is to aim to talk to every homeowner and business in the area to promote good relations and listen to their concerns and take appropriate action.</p>

Strategic Objective: TO PROVIDE A SAFER CLEANER ENVIRONMENT

Outcome: People feel safe secure and reassured in their homes and communities and have access to support mechanism as and when needed

Target(s):
 To reduce ASB repeat victimisation within Kettering Borough by March 2014
 To reduce criminal damage within Kettering Borough by 5% by March 2014
 To reduce to below 9% the percentage of residents perceiving a high level of ASB

Action	Outputs	Monitoring Indicators	Resources
To provide support for victims and witnesses of crime and ASB	Provide a free and confidential service to victims and witnesses. Provide a core service plus telephone advice that can be accessed outside core service times. Signpost to other partners and agencies as and when required.	Number of contacts Percentage of service user satisfaction Volume reduction in ASB Volume reduction in criminal damage Police Local Survey	SLA between Victim Support and KBC £34k allocated over the 4 year period commencing April 2013 To be reviewed after 2 years

Lead	Start Date:	End date	Risks	Current Position
Victim Support	April 2013	March 2017	Sustainability of funding	Historically, support for victims and witnesses of crime has been given priority and support for victims and witnesses of ASB has been limited. A free and confidential service will be provided to victims and witnesses of both crime and ASB. PCSO's visit every victim of crime and ASB as part of daily business.

Strategic Objective: To Reduce Re-Offending

**Outcome: Reduction in re-offending rates
Reduction in serious
acquisitive crime**

**Target(s):
To reduce re-offending within Kettering Borough by March 2014**

Action	Outputs	Monitoring Indicators	Resources
<p>To improve case management of offenders who are not PPO's and not within the IOM framework, but are causing harm to the local community</p>	<p>Cost effective interagency agreements. More effective interagency working through co-location. Identify individuals displaying risk factors. Through multi-agency activity adopt a problem solving approach to address criminogenic need. Instant information sharing.</p>	<p>Number of individuals identified. Number of positive outcomes achieved. Re-offending rate. Reduction in SAC. Learning provided through cases.</p>	<p>Police Probation YOS KBC NCC Troubled Families Co-ordinator CAN Tresham College Mental Health Housing Associations Groundwork Job Centre</p>

Lead	Start Date:	End date	Risks	Current Position
<p>Matt Wright Police/ Matt Chester Probation</p>	<p>January 2013</p>	<p>March 2014</p>	<p>Ineffective risk management Lack of ownership Limited resources of partner agencies</p>	<p>Research shows that there are known risk factors associated with criminal activity which if not addressed then criminal behaviour will not be disrupted or reduced. Risk factors include drug misuse and alcohol misuse. Currently there is a cohort of offenders who fall outside of the PPO Strategy and IOM framework. Historically, the re-offending rate for Kettering has been higher than the county average.</p>

Strategic Objective: **To Reduce Re-Offending**

Outcome: Reduction in re-offending rates
Reduction in serious acquisitive crime

Target(s):
To reduce re-offending within Kettering Borough by March 2014

Action	Outputs	Monitoring Indicators	Resources
To ensure effective resettlement of offenders on release from custody	<p>Effective information sharing between prisons and partners.</p> <p>Overseeing a pre-release plan when appropriate.</p> <p>Through multi-agency activity adopt a problem solving approach to address criminogenic need.</p> <p>More effective inter-agency working.</p>	<p>Number of individuals identified.</p> <p>Number of positive outcomes achieved.</p> <p>Re-offending rate.</p> <p>Reduction in SAC.</p> <p>Learning provided through cases.</p>	<p>Police</p> <p>Probation</p> <p>YOS</p> <p>Prisons</p> <p>KBC</p> <p>NCC</p> <p>Troubled Families Co-ordinator</p> <p>CAN</p> <p>Tresham College</p> <p>Mental Health</p> <p>Housing Associations</p> <p>Groundwork</p> <p>Job Centre</p>

Lead	Start Date:	End date	Risks	Current Position
Matt Wright Police/ Matt Chester Probation	January 2013	March 2014	<p>Ineffective risk management</p> <p>Lack of ownership</p> <p>Limited resources of partner agencies</p>	<p>Effective resettlement of offenders on release from custody currently occurs in pockets but could be developed and improved.</p> <p>Historically, the re-offending rate for Kettering has been higher than the county average.</p>

Strategic Objective: TO REDUCE THE NUMBER OF REPEAT VICTIMS OF DOMESTIC BURGLARY

Outcome: Reduction in the rate of domestic burglary repeat Victimisation

Target(s):

To reduce the number of domestic burglaries that are repeats within Kettering Borough to 6 by March 2014
 To reduce domestic burglary within Kettering Borough by 15% by March 2014

Action		Outputs		Monitoring Indicators		Resources	
Crime prevention advice, survey and security upgrade to be offered to all victims of domestic burglary and potential victims on priority areas		Visits and crime prevention packages to all victims of domestic burglary and homes adjacent to burgled premises Upgrade home security when appropriate Publicity in support of project		Number of homes where security upgraded Number of repeat domestic burglary victims Volume reduction in domestic burglary		Police KBC Victim Support Care and Repair	
Lead	Start Date:	End date	Risks	Current Position			
John Kinloch supported by CSP Reducing Re-offending and SAC Group	January 2013	March 2014	Reliant on Safer Community Team resources Funding runs out	There is a service level agreement between Police, Kettering Borough Council and Care and Repair (Northampton) Ltd to provide target hardening 65 referrals during the period April 2010 – March 2011 at a total cost of £5054.30, average cost £74.33 £3k Community Safety Partnership funding allocated to this project for 2011/2012 10 referrals during the period April 2011—March 2012 at a total cost of £1257.12, average cost £125.71 £11k Community Safety Partnership funding allocated to this project for 2012/2013 65 referrals during the period April 2012—March 2013, total spend £10,943 June 2013 -Funding bid submitted to Police and Crime Commissioner successful. £17.7k awarded to enable this project to continue during 2013/2014.			

Strategic Objective: TO REDUCE THE NUMBER OF REPEAT VICTIMS OF DOMESTIC BURGLARY

Outcome: Reduction in the rate of domestic burglary repeat Victimisation

Target(s):

To reduce the number of domestic burglaries that are repeats within Kettering Borough to 6 by March 2014

To reduce domestic burglary within Kettering Borough by 15% by March 2014

Action			Outputs	Monitoring Indicators	Resources
Alleyways Project – secure communal alleyways, in particular on priority areas			Visits and crime prevention packages to all victims of domestic burglary and homes adjacent to burgled premises. Secure communal alleyways and other alleyways as and when appropriate.	<ul style="list-style-type: none"> Number of alleyways made secure Number of repeat domestic burglary victims Volume reduction in domestic burglary 	Kettering Borough Council Police SCT
Lead	Start Date:	End date	Risks	Current Position	
John Nichols supported by CSP Reducing Re-offending/ SAC Group	January 2013	March 2014	<ul style="list-style-type: none"> Reliant on resources of Kettering Borough Council, and Safer Community Teams Funding runs out 	A successful alleyways project co-ordinated by Kettering Borough Council has been operating since 1999. £16,000 funding from BCU Fund to continue project focussed on SAC Area during 2010/2011 - 48 communal alleyways gated and made secure. During 2011 a successful bid was made to Northamptonshire Police Authority for £1,000 Proceeds of Crime Act funding to gate and make secure communal alleyways, priority being given to vulnerable people and older members of the community. 8 alleyways secured. £3k Community Safety Partnership funding allocated to the project for 2012/2013. 7 communal alleyways gated and made secure between April 2012—March 2013	

Strategic Objective: TO REDUCE THE NUMBER OF REPEAT VICTIMS OF DOMESTIC BURGLARY

Outcome: Reduction in the rate of domestic burglary repeat Victimisation

Target(s):

To reduce the number of domestic burglaries that are repeats within Kettering Borough to 6 by March 2014

To reduce domestic burglary within Kettering Borough by 15% March 2014

Action		Outputs		Monitoring Indicators	Resources	
Identifying and development of “No Cold Call Areas” – empower the residents in selected areas to have the confidence to say no to uninvited salespeople, and to warn potential rogue traders and cold callers that they are visiting an area where uninvited salespeople are not invited, and that the residents do not buy at the door.		Selected areas easily identifiable to a potential distraction burglar or rogue tradesman	Each resident to receive a personal visit and information pack	Signs erected on lamp posts in the area	<ul style="list-style-type: none"> Number of schemes Number of homes covered by the schemes Number of distraction burglary crimes recorded Number of repeat domestic burglary victims Volume reduction in domestic burglary 	NCC Trading Standards Kettering Borough Council Police SCT Victim Support
Lead	Start Date:	End date	Risks	Current Position		
Andy Langford supported by CSP Reducing Reoffending and SAC Group	January 2013	March 2014	Limited agency resources Funding runs out	There are currently two schemes within Kettering Borough: <ul style="list-style-type: none"> - Bayes Street, Kettering - Hodge Way block, Kettering Both have been evaluated The Doorstop Crime Action Network bringing together members of the public, private, charity and community sector organisations launched by the Police and Trading Standards during 2009, fully supported by Kettering Borough Council. Further “No Cold Call Areas” to be set up as and when required. October 2012—”No Cold Call Area” set up at Henley Close, Barton Seagrave. Trading Standards have dealt with 3 doorstep incidents recently including a prosecution for carrying out pressure washing of roofs at 2 addresses. This is a small cul-de-sac with only 8 homes. This does appear to be an area with elderly residents that doorstep sellers target.		

Strategic Objective: TO REDUCE THE NUMBER OF REPEAT VICTIMS OF DOMESTIC BURGLARY

Outcome: Reduction in the rate of domestic burglary repeat victimisation

Target(s):

To reduce the number of domestic burglaries that are repeats within Kettering Borough to 6 by March 2014

To reduce domestic burglary within Kettering Borough by 15% by March 2014

To reduce vehicle crime within Kettering Borough by 15% by March 2014

Action		Outputs		Monitoring Indicators	Resources
To maximise take up of Neighbourhood Watch schemes, in particular in vulnerable areas		Provide a dedicated officer to support, develop and maintain schemes. Assist new and existing groups in recruitment of members. Provide support and advice to existing schemes. Close liaison between Police and schemes to ensure effective flow of information. To ensure that the scheme is promoted through a variety of methods.		Number of new schemes. Total number of active schemes. Number of repeat domestic burglary victims. Volume reduction in domestic burglary. Volume reduction in vehicle crime.	SLA between Police and KBC £20,000 allocated over the 4 year period commencing April 2013 To be reviewed after 2 years
Lead	Start Date:	End date	Risks	Current Position	
Jane Calcot NHW Liaison Officer	January 2013	March 2017	Lack of ownership Apathy shown by some residents Sustainability of funding	Through Kettering Borough Council funding, since April 2012, 30 new Neighbourhood Watch schemes have been set up. There are now a total of 350 active schemes operating within the Borough. In addition, Dogwatch was launched in March 2012 and there are currently 125 members.	

Strategic Objective: TO REDUCE RE-OFFENDING

Outcome: To reduce retail theft and burglary at retail and commercial premises

Target(s):

To reduce re-offending within Kettering Borough by March 2014

Action		Outputs		Monitoring Indicators	Resources
Develop the Kettering Borough Crime Initiative (Retail Crime Initiative)		Development of and increased effectiveness of the initiative. Provide early warning re criminal Activity Shop meetings and training Identify future funding Offenders to be referred to drug/alcohol treatment		Number of new businesses joining. Retention rate of membership. Number of offender exclusions. Decrease in retail crime amongst membership.	KBCI Retailers KBC Police Chamber of Trade
Lead	Start Date:	End date	Risks	Current Position	
Neil Griffin (KBCI) supported by CSP Reducing Reoffending/ SAC Group	January 2013	March 2014	Support from Retailers. KBCI capacity and resources.	Scheme was launched in September 2002. Awarded Retail Consortium Safe Shopping Award in 2003. £3k KBC funding was agreed for 2012/2013 for continuation of KBCI. There are a total of 95 members, 44 of which are on the radio net. 11 individuals currently excluded from member stores and 14 current targets. Management Committee now meet every 5 weeks. James Condon Police has written to all stores in Kettering. Visits to shops by James Condon and Shopping Centre Security. Tresham College are working on a new logo for KBCI.	

Strategic Objective: TO REDUCE ALCOHOL RELATED VIOLENCE IN KETTERING ASSOCIATED WITH THE NIGHT TIME ECONOMY

Outcome: Reduction in alcohol related violent crime in and around Kettering Town Centre

Target(s):
 To reduce violence against the person in Kettering town centre by 8% by March 2014
 To reduce violence against the person within Kettering Borough by 8% by March 2014

Action	Outputs	Monitoring Indicators	Resources
Provision of an alternative business model for licensed premises in Kettering town centre	Delivery of presentation to licensees to help change perceptions and present alternative business models. Provide economic development support to town centre licensees.	Number of licensed premises switching to alternative business models. Volume reduction in violence against the person offences. Volume reduction in violence against the person offences in Kettering town centre. Number of incidents per premises.	Kettering Borough Council Environmental Health and Community Services Police

Lead	Start Date:	End date	Risks	Current Position
Russ Howell/Alex Jelly Supported by Kettering Town Centre Violence and Anti-Social Behaviour Task Force and CSP Alcohol Violence Group	January 2013	March 2014	Lack of 'Buy In' from licensed premises	It is desirable for Kettering town centre licensed premises to shift away from their current business model whereby the 18-24 age group drink alcohol until 6am. There are business models which show the benefit of alternatives to just drinking. There is a demand for eating out within the town centre and there is a bigger mark up on food than there is with alcohol. There is clear evidence that local residents would like the nightlife in Kettering to be different. A seminar for licensees was held at Kettering Borough Council on 29th January 2013. Presentations were given by KBC, Police and Kettering Street Pastors. The focus was on Purple Flag, alternative business models for licensed premises and Early Morning Restriction Orders. On 22nd May 2013 a Purple Flag Workshop was held at Kettering Borough Council and work to achieve this status is progressing.

Strategic Objective: TO REDUCE ALCOHOL RELATED VIOLENCE IN KETTERING ASSOCIATED WITH THE NIGHT TIME ECONOMY

Outcome: Reduction in alcohol related violent crime in and around Kettering Town Centre

Target(s):

To reduce violence against the person in Kettering Town Centre by 8% by March 2014
To reduce violence against the person within Kettering Borough by 8% by March 2014

Action	Outputs	Monitoring Indicators	Resources
Encourage every Licensee to join the Kettering and District Pubwatch Scheme and actively participate in implementing initiatives	<p>Joint agency visits to licensed premises who are not currently members and encouragement to join.</p> <p>Good engagement with licensees through a new forum separate to Pubwatch.</p> <p>Hold seminar and economic development follow up showing licensees the benefits of a new business model.</p>	<p>Volume reduction in violence against the person offences</p> <p>Volume reduction in violence against the person offences in Kettering Town Centre</p> <p>Number of members</p> <p>Frequency of meetings</p> <p>Initiatives implemented to reduce crime and anti-social behaviour</p> <p>Number of incidents per premises</p> <p>Number excluded from 'Pubwatch' premises</p>	<p>Administration costs</p> <p>Resources of Kettering Borough Council Environmental Health and Police</p> <p>Costs to licensed premises to upgrade security</p>

Lead	Start Date:	End date	Risks	Current Position
Russ Howell/ Julie Mead Supported by Kettering Town Centre Violence and Anti-Social Behaviour Task Force, CSP Alcohol Violence Group and Kettering and District Pubwatch Scheme	January 2013	March 2014	Lack of 'Buy In' from licensed premises	<p>Current advice from National Pubwatch Scheme is to be cautious in routinely requiring membership as a condition.</p> <p>A new Kettering and District Pubwatch was formed during 2011.18 premises are currently members of the scheme and 14 individuals are excluded from Pubwatch premises. 12 members are linked via the Pubwatch radio scheme.</p> <p>£500 KBC funding agreed for 2012/13 for Pubwatch initiatives.</p> <p>There is currently some apathy with licensees and a need to improve effectiveness of Pubwatch.</p> <p>June 2012– Reported that Chairman Chris Robinson was committed to making Pubwatch work and small steps of improvement had been seen. A Home Office representative attended a recent meeting for a Q & A session and the outcome from that had been positive. The Fire Officer had been invited to future meetings. The event for licensees held at Wicksteed Park had proved a success. Northampton Pubwatch won a Pubwatch of England award and their Chair is to be invited to Kettering Pubwatch to share information on their success with the aim to replicate it in Kettering.</p> <p>June 2013 -Chairman has visited Northampton Pubwatch twice to obtain good practice and is trying to link Kettering and Corby Pubwatch more.</p>

Strategic Objective: TO REDUCE ALCOHOL RELATED VIOLENCE IN KETTERING ASSOCIATED WITH THE NIGHT TIME ECONOMY

Outcome: Reduction in alcohol related violent crime in and around Kettering Town Centre

Target(s):

To reduce violence against the person in Kettering Town Centre by 8% by March 2014
To reduce violence against the person within Kettering Borough by 8% by March 2014

Action		Outputs		Monitoring Indicators	Resources
Promote the development of Transportation Schemes that help disperse the public from the Town Centre		Develop 'Fare Share' Taxi Scheme Encourage licensees to clearly display information about taxis and transport in their premises Focus on late night taxi ranks Identify funding for "one off" schemes during high risk periods eg major events		Volume reduction in violence against the person offences Volume reduction in violence against the person offences in Kettering Town Centre Usage of late night Taxi Ranks Operators implementing 'Fare Share' Taxi Schemes	Resources of Kettering Borough Council Environmental Health and Police
Lead	Start Date:	End date	Risks	Current Position	
Russ Howell. Supported by Kettering Town Centre Violence and Anti-Social Behaviour Task Force, CSP Alcohol Violence Group and Kettering and District Pub-watch Scheme	January 2013	March 2014	Lack of 'Buy In' from Taxi operators and licensed premises	Main Taxi Rank located in Horsemarket, Kettering. A further late night taxi rank is now in place in Newland Street at the north end of the town centre. Monitoring of activity around ranks by Environmental Health night time enforcement officer has not identified any significant issues or concerns. KLM have taxi office in town centre and fare share is successful, however, it is difficult to incorporate fare share on the ranks. Clubs now have taxi information. Fit for purpose CCTV has been installed in 16 taxis using Partnership funding. In respect of public transport at peak times during the night, this has been explored but not considered financially viable. January 2013 —The Licensing Team have monitored illegal plying for hire on Saturday nights in the town centre and so far they have detected 4. A press release went out reminding people to keep safe at Christmas by only using licensed taxis. June 2013—there are currently no issues relating to transportation schemes.	

Strategic Objective: TO REDUCE ALCOHOL RELATED VIOLENCE IN KETTERING ASSOCIATED WITH THE NIGHT TIME ECONOMY

Outcome: Reduction in alcohol related violent crime in and around Kettering Town Centre

Target(s):

To reduce violence against the person in Kettering Town Centre by 8% by March 2014
To reduce violence against the person within Kettering Borough by 8% by March 2014

Action		Outputs		Monitoring Indicators		Resources	
Implement a programme of multi-agency visits to targeted problem premises		Identify problem licensed premises Define what constitutes a problem licensed premises Joint agency activities targeting problem licensed premises		Volume reduction in violence against the person offences Volume reduction in violence against the person offences in Kettering Town Centre Number of joint agency activities undertaken Number of persons charged/prosecuted		Resources of Police, Kettering Borough Council Environmental Health, Trading Standards and Fire and Rescue Service	
Lead	Start Date:	End date	Risks	Current Position			
Julie Mead/ Russ Howell. Supported by North Northamptonshire Licensing Enforcement Group and Kettering Town Centre Violence and Anti-Social Behaviour Task Force	January 2013	March 2014	Limited resources of participating agencies	<p>The hotspots for violence offences are located in and around Kettering Town Centre. The profile can clearly be seen to fit the night-time economy within the Town Centre.</p> <p>Proactive visits must be identified by risk assessment as detailed in Guidance to the Licensing Act 2003. Assessment is currently done using the Police Red Amber Green Matrix system to identify relevant premises for visits. Discussions underway to see if the Matrix can also be used to take account of other agency information to give a better overview of premises of concern. In the meantime North Northamptonshire Licensing Enforcement Group has been established where all agencies within North Northamptonshire area meet to discuss current concerns and identify courses of action.</p> <p>KBC Environmental Health working with the Police feeding into the RAG Matrix.</p> <p>Currently issues with resources, therefore targeted enforcement.</p> <p>No premises currently in red or amber.</p>			

Strategic Objective: TO REDUCE ALCOHOL RELATED VIOLENCE IN KETTERING ASSOCIATED WITH THE NIGHT TIME ECONOMY

Outcome: Reduction in alcohol related violent crime in and around Kettering Town Centre

Target(s):

To reduce violence against the person in Kettering Town Centre by 8% by March 2014
To reduce violence against the person within Kettering Borough by 8% by March 2014

Action		Outputs		Monitoring Indicators	Resources
To develop the gathering of data within KGH Accident and Emergency and Ambulance Service and share with partners to help address the problem of alcohol related crime and disorder		Data gathered within KGH Accident and Emergency and Ambulance Service Data processed and shared with Partnership		Volume reduction in violence against the person offences Volume reduction in violence against the person offences in Kettering Town Centre Number receiving alcohol related treatment Number of reports provided for partnership to help address the problem of alcohol related crime and disorder.	Funding collection of data from KGH Accident and Emergency Resources of Ambulance Service DAAT/NHS Northamptonshire joint post undertaking the required analysis
Lead	Start Date:	End date	Risks	Current Position	
Dawn Wintle Public Health	January 2013	March 2014	Limited resources of participating agencies	Data sharing agreement in place. A & E reception team have been collecting data since 23 rd May 2011 and data has been shared with partners since June 2011. June 2013 - quarterly profiles are now provided to Partners. There is ongoing work to overcome barriers relating to location data.	

Strategic Objective: TO REDUCE ALCOHOL RELATED VIOLENCE IN KETTERING ASSOCIATED WITH THE NIGHT TIME ECONOMY

Outcome: Reduction in alcohol related violent crime in and around Kettering Town Centre

Target(s):

To reduce violence against the person in Kettering Town Centre by 8% by March 2014
To reduce violence against the person within Kettering Borough by 8% by March 2014

Action		Outputs		Monitoring Indicators	Resources
Develop the National "Street Pastors" scheme within the Kettering town centre night time economy		Maintain 4 teams of 4 street pastors fully trained and operational. Provide quality briefings for street pastors before they go onto the streets each Saturday night		Volume reduction in violence against the person offences Volume reduction in violence against the person offences in Kettering Town Centre. Number of members. Time spent on streets. Number of referrals to other agencies.	Churches Together Police KBC
Lead	Start Date:	End date	Risks	Current Position	
Fiona de Boltz Supported by Kettering Town Centre Violence and Anti-Social Behaviour Task Force, CSP Alcohol Violence Group and Kettering and District Pubwatch Scheme	January 2013	March 2014	None apparent.	<p>The Street Pastors scheme was launched at KBC on 20th January 2011. Commissioning Service was held at Central Methodist Church on Friday 15th July 2011 followed by Street Pastors out on the streets of Kettering for the first time.</p> <p>A Street Pastors Commissioning Service and 1st Birthday Party were held at the Central Methodist Church on Friday 13th July 2012. There are now 7 new Pastors on the streets.</p> <p>There is now a total of 28 Street Pastors in Kettering from 16 churches, and teams of 6-9 are on the streets every Saturday night from 11pm x 3am. They are working closely with the Police who provide a briefing. Comprehensive stats are provided to the Partnership on a monthly basis.</p> <p>On Saturday nights during May 2013, the Street Pastors gave out 13 pairs of flip flops, 189 lollies, 19 bottles of water and 2 space blankets. In addition, they collected 291 cans, bottles and items of glass.</p> <p>7 trainee Street Pastors will be commissioned on 26th July 2013.</p>	

Strategic Objective: TO REDUCE ALCOHOL RELATED VIOLENCE IN KETTERING ASSOCIATED WITH THE NIGHT TIME ECONOMY

Outcome: Reduction in alcohol related violent crime in and around Kettering Town Centre

Target(s):

To reduce violence against the person in Kettering Town Centre by 8% by March 2014
To reduce violence against the person within Kettering Borough by 8% by March 2014

Action		Outputs		Monitoring Indicators	Resources
Encourage use of polycarbonate replacements in stand up Town Centre licensed premises		Joint agency visits to identified premises and encouragement to use polycarbonate replacements Introduction of polycarbonate replacements to be made condition of licence in appropriate cases		Volume reduction in violence against the person offences Volume reduction in violence against the person offences in Kettering Town Centre Number of licensed premises using polycarbonate replacements Number of assaults where glass used as a weapon	Costs to licensed premises in providing polycarbonate replacements Resources of Kettering Borough Council Environmental Health and Police
Lead	Start Date:	End date	Risks	Current Position	
Russ Howell/ Julie Mead- Supported by Kettering Town Centre Violence and Anti-Social Behaviour Task Force, CSP Alcohol Violence Group and Kettering and District Pub-watch Scheme	January 2013	March 2014	Lack of 'Buy In' from licensed premises Funding polycarbonate replacements	Following a successful trial in a licensed premises in Kettering Town Centre, £10,000 Partnership funding was used to introduce approximately 21,000 polycarbonate replacements in high risk licensed premises in the town centre. Incidents involving glass are now rare in Kettering town centre. Most premises are now purchasing their own polycarbonate replacements.	

Strategic Objective: TO REDUCE ALCOHOL RELATED VIOLENCE IN KETTERING ASSOCIATED WITH THE NIGHT TIME ECONOMY

Outcome: Reduction in alcohol related violent crime in and around Kettering Town Centre

Target(s):

To reduce violence against the person in Kettering Town Centre by 8% by March 2014
To reduce violence against the person within Kettering Borough by 8% by March 2014

Action	Outputs	Monitoring Indicators	Resources
Continue to improve overall effectiveness of CCTV system associated with the night time economy, by upgrading and improving the system, training and practices	<p>Improve overall effectiveness of Town Centre CCTV</p> <p>Continuous improvement of training and practices through CCTV management</p>	<p>Volume reduction in violence against the person offences</p> <p>Volume reduction in violence against the person offences in Kettering Town Centre</p> <p>Upgrade and improvement to the system</p> <p>Training provided</p> <p>Review of practices</p>	Resources of Kettering Borough Council and Police

Lead	Start Date:	End date	Risks	Current Position
Jim McNally, supported by Kettering Town Centre Violence and Anti-Social Behaviour Task Force and CSP Alcohol Violence Group	January 2013	March 2014	<p>Faults developing with system</p> <p>Failure to review tapes</p> <p>Revenue costs</p>	<p>66 cameras are now linked to the Kettering Borough CCTV Control Room.</p> <p>Potential locations for new cameras have been forwarded to KBC Planning Department in view of new development within the Borough. However, owing to the current economic climate numbers of cameras will not be increased in the foreseeable future. The existing system will be retained with no loss of cameras at this time.</p>

Strategic Objective: TO REDUCE ALCOHOL RELATED VIOLENCE IN KETTERING ASSOCIATED WITH THE NIGHT TIME ECONOMY

Outcome: Reduction in alcohol related violent crime in and around Kettering Town Centre

Target(s):

To reduce violence against the person in Kettering Town Centre by 8% by March 2014
To reduce violence against the person within Kettering Borough by 8% by March 2014

Action		Outputs		Monitoring Indicators		Resources	
Effective use of body worn video cameras by door supervisors in high risk licensed premises		Joint agency visits to licensed premises and encouragement to make effective use of cameras		Volume reduction in violence against the person offences Volume reduction in violence against the person offences in Kettering Town Centre Number of premises where equipment in use Number of door supervisors using equipment		Pubwatch Police Kettering Borough Council	
Lead	Start Date:	End date	Risks	Current Position			
Chris Robinson Chair of Pubwatch	April 2012	March 2013	Failure of premises to make use of cameras issued to them	<p>£12,500 Partnership funding was used to provide 22 body worn video cameras for Pubwatch members, priority to be given to the bigger venues.</p> <p>The following premises now have cameras: Decades(x2), Bar Sun, Earl of Dalkeith, Prince of Wales (x2), Crispin Club, Abacus (x2), and Henry's.</p> <p>July 2012—A representative of Pubwatch will be visiting all town centre licensed premises to discuss use of body worn video cameras.</p> <p>December 2012 - £500 provided by KBC to Pubwatch for florescent jackets to hold cameras. Jackets distributed by the police who report that roll out went really well. Victoria Newitt and Gary Liddle from the police visited the door supervisors at Henry's, Decades, Prince of Wales, Abacus, Bar Sun, Remis and Cocoon and delivered training on the body worn video units. This went well and all seemed a lot happier about using the units. It was stressed that with Pubwatch and KBC funding the body worn video units and jackets there is an expectation that they will be worn.</p>			

Strategic Objective: TO REDUCE ALCOHOL RELATED VIOLENCE IN KETTERING ASSOCIATED WITH THE NIGHT TIME ECONOMY

Outcome: Reduction in alcohol related violent crime in and around Kettering Town Centre

Target(s):

To reduce violence against the person in Kettering Town Centre by 8% by March 2014

To reduce violence against the person within Kettering Borough by 8% by March 2014

Action		Outputs		Monitoring Indicators		Resources	
Provide a Dynamic Emergency Care Centre in Kettering Town Centre		Treating minor injuries, thus relieving pressure on A & E and the emergency services. Promoting responsible drinking.		Number of patients managed. Non-conveyance rate. Number of nights in place.		East Midlands Ambulance Service St Johns Ambulance Police Kettering Borough Council	
Lead	Start Date:	End date	Risks	Current Position			
Mark Gregory EMAS	January 2013	March 2014	Limited resources of participating agencies	<p>This initiative took place at Dalkeith Place in Kettering Town Centre on the nights of Friday 23rd, Saturday 24th, Monday 26th, Friday 30th and Saturday 31st December, 2011. The initiative proved very successful with 48 persons being dealt with, 39 of them receiving some form of treatment. As a result the initiative will be run every Saturday, every Friday and Saturday on pay weekends, and every Friday, Saturday and Sunday when there is a Bank Holiday.</p> <p>June 2012—NHS are funding the DECC for the foreseeable future. It was agreed at the CSP Alcohol Related Violence Group that the DECC is needed every weekend not just holidays or major events as in some towns.</p> <p>November 2012 - EMAS are now the sole funder of the DECC which operates every Friday and Saturday 10p.m. x 4a.m. There is a paramedic, a member of St Johns Ambulance and a police officer working there at all times. EMAS would like to continue to provide this service but are unsure about funding during 2013.</p> <p>May 2013—DECC no longer operating owing to costs and demands on paramedics. Future of DECC to be discussed at the next Health and Well Being Forum</p>			

Strategic Objective: TO REDUCE ALCOHOL RELATED VIOLENCE IN KETTERING ASSOCIATED WITH THE NIGHT TIME ECONOMY

Outcome: Reduction in alcohol related violent crime in and around Kettering Town Centre

Target(s):

To reduce violence against the person in Kettering Town Centre by 8% by March 2014
To reduce violence against the person within Kettering Borough by 8% by March 2014

Action		Outputs		Monitoring Indicators	Resources
To use test purchasing effectively in all types of licensed premises and take positive action against those caught selling alcohol to under age drinkers and purchasing by proxy		Identify problem licensed premises	Joint agency activities targeting problem licensed premises	Number of joint agency activities undertaken Number of test purchase activities Volume reduction in assault with injury offences	Resources of Trading Standards, Police and Kettering Borough Council Environmental Health
Lead	Start Date:	End date	Risks	Current Position	
Julie Mead/ Carol Gamble Supported by North Northamptonshire Licensing Enforcement Group	January 2013	March 2014	Limited resources of participating agencies	<p>Currently issues in respect of Trading Standards resources, therefore targeted work on complaints received.</p> <p>The Police have recently run an operation targeting premises selling alcohol to young people. No premises were found to be doing so.</p> <p>The Street Pastors have not noticed a problem recently with young people drinking in the town centre.</p>	

Strategic Objective: TO REDUCE THE RISK OF HARM TO VICTIMS OF DOMESTIC ABUSE

**Outcome: Increase in reported incidents
Reduce repeat cases at MARAC**

**Target(s):
Monitor progress at County level**

Action	Outputs	Monitoring Indicators	Resources
To undertake targeted awareness raising and engagement, with a focus on the areas around Kettering town centre and areas to the east of the town	<p>Increase in domestic abuse interventions</p> <p>Promotion of domestic abuse and sexual violence campaigns</p> <p>Awareness and engagement in colleges, schools and youth settings</p> <p>Delivery of messages around “what happens when you report”</p>	<p>Feedback from service providers on referrals received</p> <p>Police reporting data</p>	<p>Northamptonshire Sunflower Centre</p> <p>Victim Support</p> <p>Women’s Aid</p> <p>Police</p> <p>KBC</p> <p>Corby & Kettering CSP Interpersonal Violence Delivery Group</p>

Lead	Start Date:	End date	Risks	Current Position
Lucy Westley Sunflower Centre	January 2013	March 2014	<p>Lack of resources for campaigns</p> <p>Lack of capacity within agencies</p>	<p>Articles developed for all partners to include in their corporate magazines and on websites to ensure we are achieving a co-ordinated message.</p> <p>A Domestic Abuse Campaign was carried out during April/May 2011 using radio, bus ticket and bus interior advertising, as well as washroom posters in pubs, clubs and other public venues, and back of car park tickets. It was also linked to a nightsafe/alcohol related violence radio advertising campaign.</p> <p>During Domestic Abuse Week Information was displayed on plasma screens and websites. Materials were displayed at community centres, sports centres, libraries, surgeries and Tresham College.</p> <p>Awareness raising campaign held with regard to the football European Championships and Olympics.</p> <p>Domestic Abuse Awareness Training for Churches on 17th September 2012 9.30am x 4.30pm at Christ the King, Kettering.</p> <p>As part of the build up to Domestic Abuse Week, a Domestic Abuse Awareness Raising Event for Kettering Borough Elected Members and Partners was held on the evening of Wednesday 21st November, 2012, at Kettering Borough Council. Presentations by Sunflower Centre, Women’s Aid, Northamptonshire Rape & Incest Crisis Centre, Victim Support, KBC Housing Services, Serenity and Police followed by a question and answer session.</p> <p>During Domestic Abuse Week a display was held at Tresham College in Kettering. Literature is also now displayed in the Dynamic Emergency Care Centre on Kettering Town Centre. Materials are being handed out at “Have Your Say” events, and are displayed in council offices, community centres, sports centres, libraries and surgeries. Full use is being made of websites and plasma screens.</p> <p>Womens Safety Sessions being held at a number of locations including awareness raising re date rape drugs and security relating to purses and bags.</p>

Strategic Objective: TO REDUCE THE RISK OF HARM TO VICTIMS OF DOMESTIC ABUSE

**Outcome: Reduction in domestic abuse incidents
Reduce repeat cases at MARAC**

Target(s):
Monitor progress at County level

Action	Outputs	Monitoring Indicators	Resources
To provide target hardening of homes of high risk victims of domestic abuse	Secure funding for target hardening of homes Target hardening of homes of high risk victims of domestic abuse	Feedback from service providers on referrals received Police reporting data	Northamptonshire Sunflower Centre Police Victim Support Women's Aid KBC Corby & Kettering CSP Interpersonal Violence Delivery Group

Lead	Start Date:	End date	Risks	Current Position
Lucy Westley Sunflower Centre	January 2013	March 2014	Lack of capacity within agencies Limited funding	<p>Domestic abuse target hardening – 41 referrals during 2010/2011. Total spend £13,440. £6,800 Home Office funding allocated by Community Safety Partnership Board to domestic violence target hardening for 2011/2012. A further £5,000 was provided by KBC Housing Services.</p> <p>Domestic abuse target hardening -37 referrals during 2011/2012. Total spend £11,139. £6,800 Home Office funding allocated by Community Safety Partnership Board to domestic violence target hardening for 2012/2013.</p> <p>Domestic abuse target hardening – 36 referrals during the period April 2012—March 2013. Total spend £12,626.</p>

Strategic Objective: TO REDUCE THE RISK OF HARM TO VICTIMS OF DOMESTIC ABUSE

Outcome: Increase in reported incidents
Reduce repeat cases at MARAC

Target(s):
Monitor progress at County level

Action	Outputs	Monitoring Indicators	Resources
Delivery of 12 week Domestic Abuse Awareness programme, to women who are, or who have been victims of Domestic Abuse. The course will enable women to learn new techniques that will protect them and their children from entering into future violent relationships.	The programme will be run in conjunction with the Change programme to male perpetrators, the outcome will be to see DA incidents reduced within Kettering.	Precourse evaluation of the victims awareness Evaluation after course Feedback from service providers Police reporting data	Programme facilitated by 2 trained facilitators. Resource materials. Venue. Funded during 2012/2013 by KBC and Police.

Lead	Start Date:	End date	Risks	Current Position
WenWA	April 2012	March 2013	Limited funding Lack of capacity within agencies	<p>The Freedom programme has been successfully running in Northamptonshire for 3 years, it has been recognised as a very effective programme for women who are victims of DA. It has been recognised by Adult & Children's services Review and Conferencing, offering the opportunity for engagement to women whose children are at risk of being removed, due to DA.</p> <p>2 Programmes have been funded by Kettering Borough Council and the Police at a cost of £1,610 each. The Programmes are being delivered from Ronald Tree children's centre and Desborough Library. 2 women who attend the group have left violent partners and moved into the Kettering refuge.</p> <p>March 2013 - 2 Programmes completed.</p> <p>June 2013 - Funding bid submitted to Police and Crime Commissioner to fund further programmes.</p>

Strategic Objective: TO REDUCE THE RISK OF HARM TO VICTIMS OF DOMESTIC ABUSE

Outcome: Reduction in domestic abuse incidents
Reduce repeat cases at MARAC

Target(s):
Monitor progress at County level

Action	Outputs	Monitoring Indicators	Resources
Delivery of 8 week Change Programme awareness programme to male perpetrators of Domestic Abuse. The awareness session will be run in conjunction with victims who attend the Freedom Programme	Raise awareness and challenge the behaviours of males who have instigated abusive behaviours towards their partners. Outline the effects it may have on any children in the relationship.	Risk Assessment pre-post course. Numbers on programme Feedback from service providers Police reporting data	2 Staff facilitators. Police are currently reviewing what they are going to fund in the future.

Lead	Start Date:	End date	Risks	Current Position
Relate.	September 2012	March 2013	Lack of referrals Limited funding	<p>Relate and Northampton Women's Aid have developed this joint programme to ensure those families most at risk of incidents of DA will have the opportunity to learn together. The target group will be those who are known to Police and Adult and Children's services.</p> <p>2 Programmes have been funded by Kettering Borough Council and Police. To date there has been a lack of referrals and this is being addressed by the Partnership. The aim is to deliver the first programme during November 2012.</p> <p>January 2013—referrals are now being received from Social Workers in Kettering.</p> <p>June 2013 - One Programme completed. It will be fully evaluated before going ahead with others.</p>

Strategic Objective: TO REDUCE THE RISK OF HARM TO VICTIMS OF DOMESTIC ABUSE

**Outcome: Reduction in domestic abuse incidents
Reduce repeat cases at MARAC**

Target(s):
Monitor progress at County level

Action	Outputs	Monitoring Indicators	Resources
This Choose to Change programme is delivered to young people to challenge their perceptions of healthy relationships, this programme is targeted at young people who are involved in the criminal justice system, or are known to be instigators of violence in relationship.	8 week programme that challenges the beliefs of young people about their violent and abusive behaviours.	Evolution pre-post course , indicators would be a significant reduction in DA incidents with young people. Numbers on programme Feedback from service providers Police reporting data	2 x Facilitators. Course materials. Funded during 2012/2013 by KBC and Police

Lead	Start Date:	End date	Risks	Current Position
Northampton Women's Aid.	Sept 2012	March 2013	Lack of referrals Limited funding	<p>Northampton Women's Aid have been funded for 2 years to run this programme, the young people who have attended have evidence an improvement in their school attendance, engaging positively with their parents.</p> <p>NWA have troduced this course programme to the youth offending team in Kettering, and education settings where relationship problems have been an issue.</p> <p>4 Sessions, funded by Kettering Borough Council and the Police are being hosted at Kettering Youth Information Centre.</p> <p>March 2013—no referrals received from schools, youth offending team, social services or police during December, January and February. Therefore the 4 sessions will be held during 2013/2014.</p>

**PRODUCED BY MEMBERS OF
KETTERING BOROUGH COMMUNITY SAFETY PARTNERSHIP:-**

Kettering Borough Council 01536 534378

Northamptonshire Police 101

Northamptonshire County Council 0300 1261000

**Northamptonshire Fire & Rescue
(Kettering) 01604 797000**

**NHS Nene Clinical Commissioning
Group 01604 651100**

**National Probation Service
(Northamptonshire Area) 01536 463920**

Northamptonshire Sunflower Centre 01536 204691

**Northamptonshire Youth Offending
Team (North) 01536 533800**

**Northamptonshire Victim Support
(Kettering) 01536 417119**

