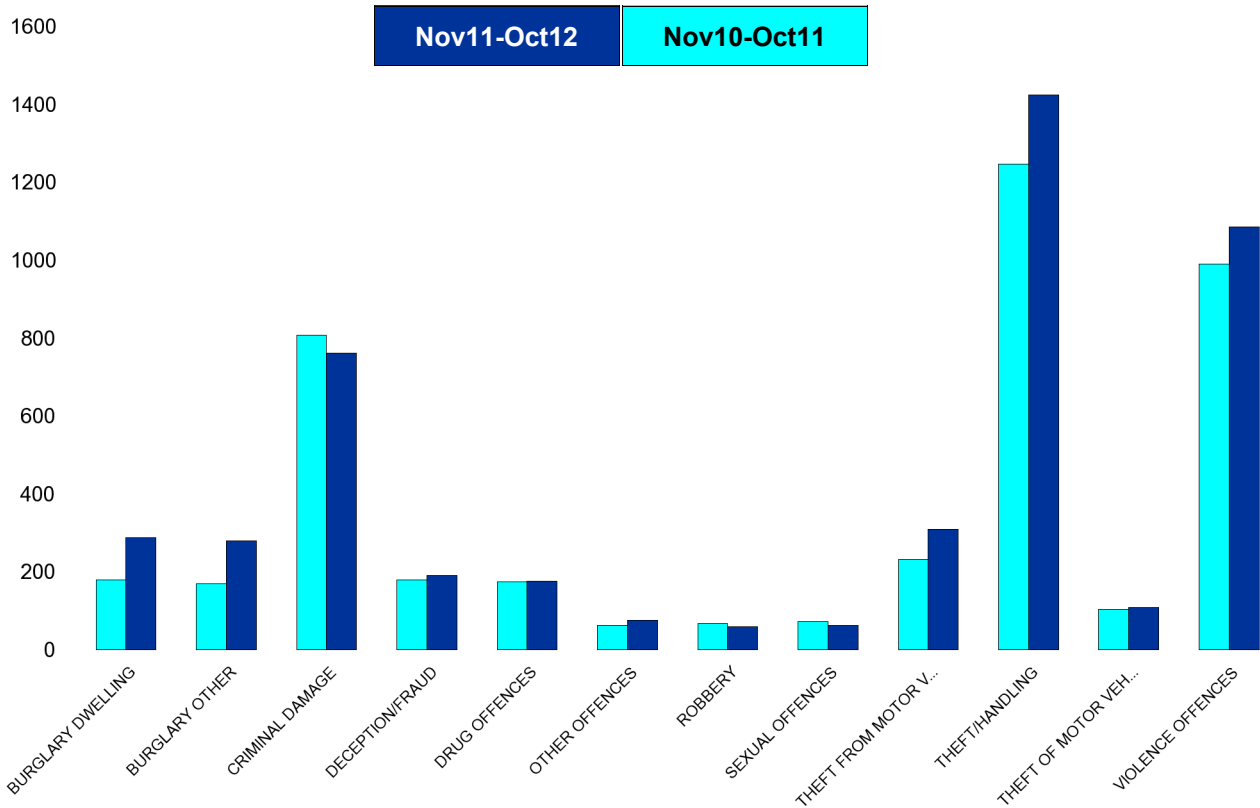


Kettering Town Forum Report

Kettering Town SCT - Crime

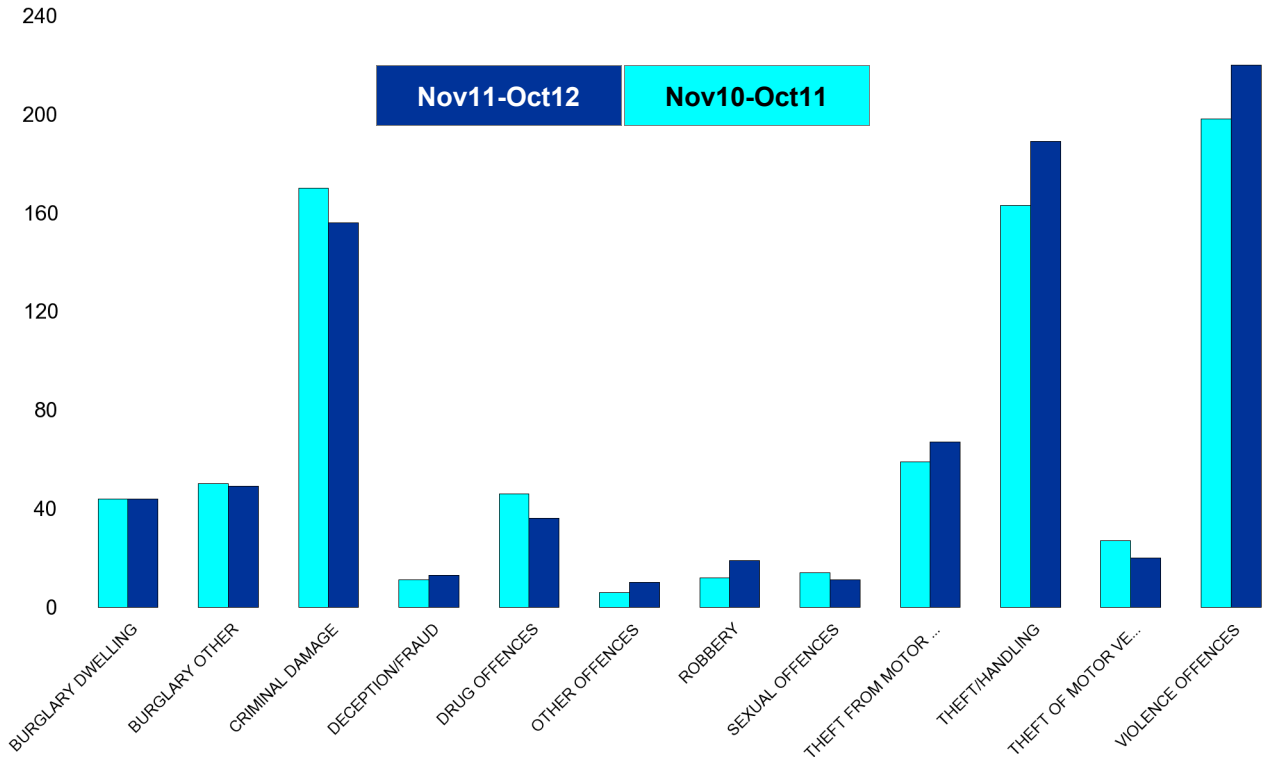
HO Group	No of Crimes (Nov11-Oct12)	No of Crimes (Nov10-Oct11)	+/- Crime	% Change	No of Cleared Up Crimes	Detection Rate (Past 12 Months)
BURGLARY DWELLING	288	179	109	61%	24	8%
BURGLARY OTHER	280	170	110	65%	17	6%
CRIMINAL DAMAGE	761	807	-46	-6%	158	21%
DECEPTION/FRAUD	191	179	12	7%	60	31%
DRUG OFFENCES	177	174	3	2%	161	91%
OTHER OFFENCES	76	62	14	23%	40	53%
ROBBERY	60	67	-7	-10%	18	30%
SEXUAL OFFENCES	63	72	-9	-13%	20	32%
THEFT FROM MOTOR VEHICLES	309	232	77	33%	9	3%
THEFT/HANDLING	1424	1247	177	14%	524	37%
THEFT OF MOTOR VEHICLES	108	104	4	4%	20	19%
VIOLENCE OFFENCES	1086	991	95	10%	468	43%
Sum:	4823	4284	539	13%	1519	31%



Kettering Town Forum Report

All Saints

HO Group	No of Crimes (Nov11-Oct12)	No of Crimes (Nov10-Oct11)	+/- Crime	% Change	No of Cleared Up Crimes	Detection Rate (Past 12 Months)
BURGLARY DWELLING	44	44	0	0%	7	16%
BURGLARY OTHER	49	50	-1	-2%	6	12%
CRIMINAL DAMAGE	156	170	-14	-8%	37	24%
DECEPTION/FRAUD	13	11	2	18%	6	46%
DRUG OFFENCES	36	46	-10	-22%	35	97%
OTHER OFFENCES	10	6	4	67%	6	60%
ROBBERY	19	12	7	58%	3	16%
SEXUAL OFFENCES	11	14	-3	-21%	7	64%
THEFT FROM MOTOR VEHICLES	67	59	8	14%	2	3%
THEFT/HANDLING	189	163	26	16%	61	32%
THEFT OF MOTOR VEHICLES	20	27	-7	-26%	1	5%
VIOLENCE OFFENCES	220	198	22	11%	87	40%
Sum:	834	800	34	4%	258	31%

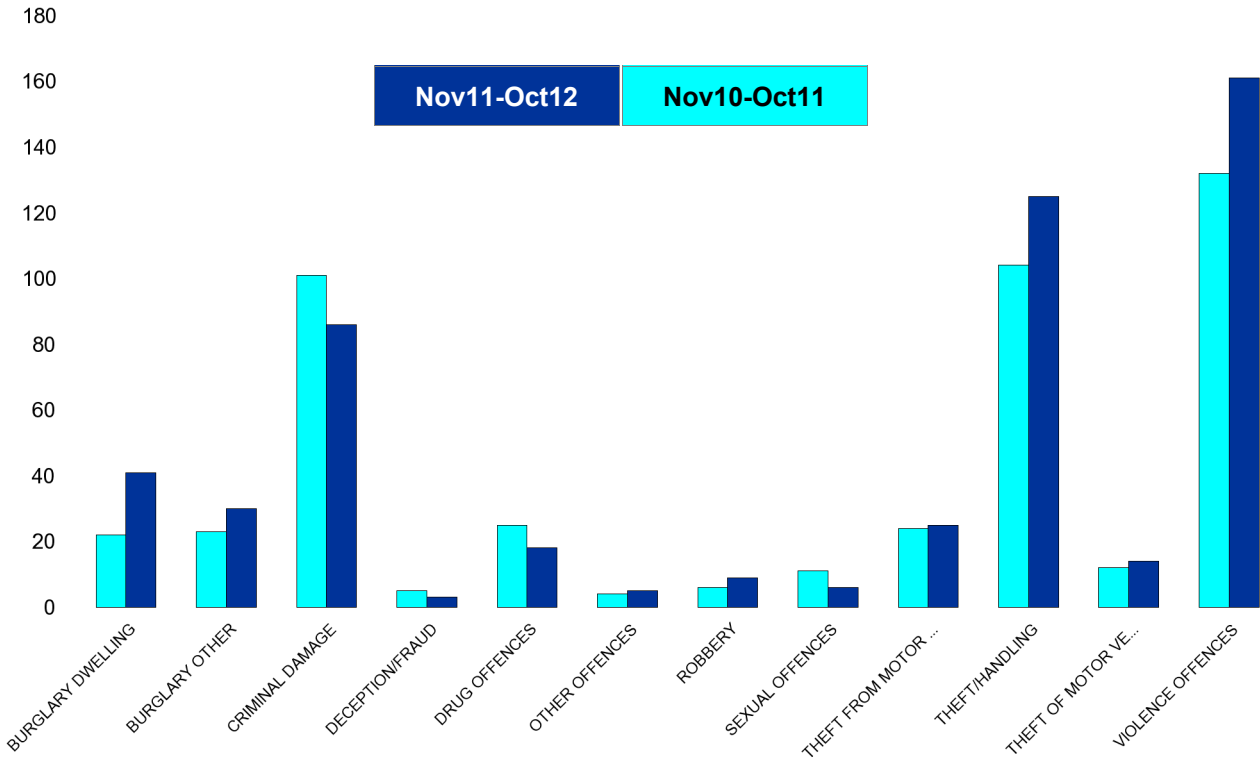


Kettering Town Forum Report

Avondale Grange

HO Group	No of Crimes (Nov11-Oct12)	No of Crimes (Nov10-Oct11)	+/- Crime	% Change
BURGLARY DWELLING	41	22	19	86%
BURGLARY OTHER	30	23	7	30%
CRIMINAL DAMAGE	86	101	-15	-15%
DECEPTION/FRAUD	3	5	-2	-40%
DRUG OFFENCES	18	25	-7	-28%
OTHER OFFENCES	5	4	1	25%
ROBBERY	9	6	3	50%
SEXUAL OFFENCES	6	11	-5	-45%
THEFT FROM MOTOR VEHICLES	25	24	1	4%
THEFT/HANDLING	125	104	21	20%
THEFT OF MOTOR VEHICLES	14	12	2	17%
VIOLENCE OFFENCES	161	132	29	22%
Sum:	523	469	54	12%

No of Cleared Up Crimes	Detection Rate (Past 12 Months)
6	15%
1	3%
10	12%
0	0%
19	106%
1	20%
2	22%
0	0%
1	4%
31	25%
2	14%
66	41%
139	27%

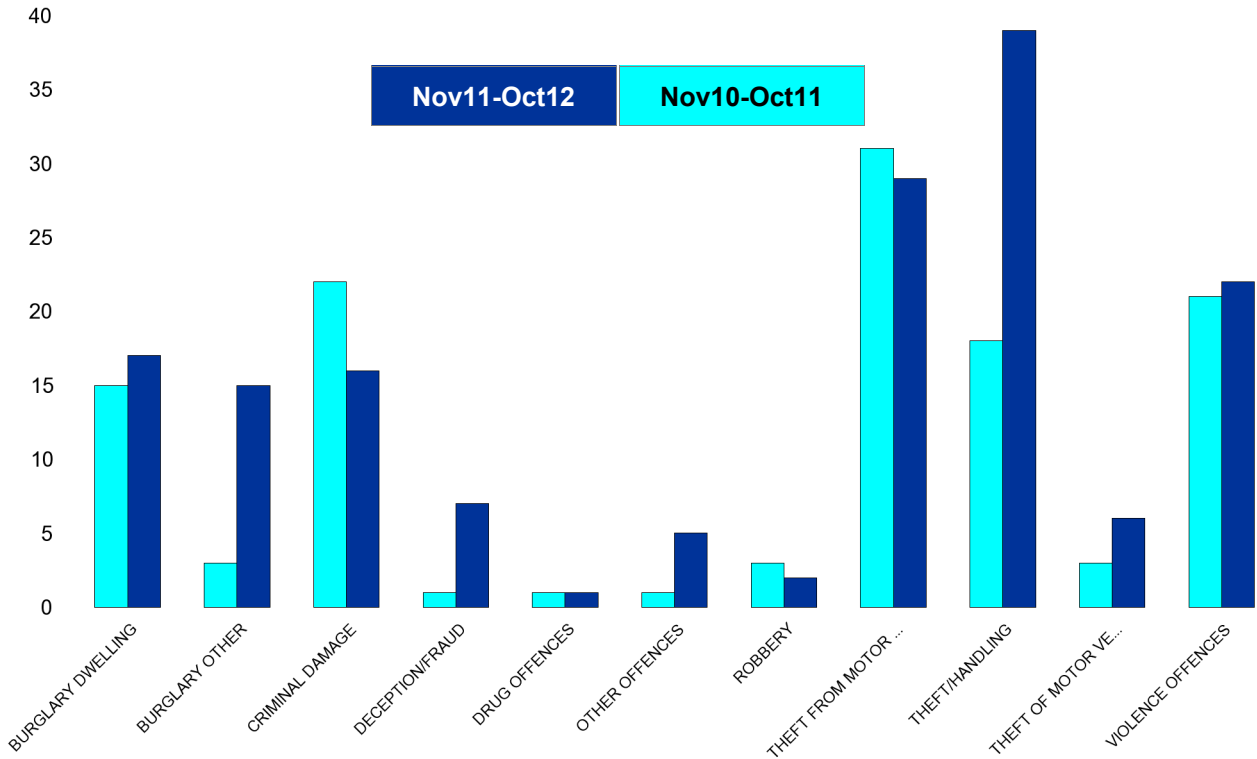


Kettering Town Forum Report

Brambleside

HO Group	No of Crimes (Nov11-Oct12)	No of Crimes (Nov10-Oct11)	+/- Crime	% Change
BURGLARY DWELLING	17	15	2	13%
BURGLARY OTHER	15	3	12	400%
CRIMINAL DAMAGE	16	22	-6	-27%
DECEPTION/FRAUD	7	1	6	600%
DRUG OFFENCES	1	1	0	0%
OTHER OFFENCES	5	1	4	400%
ROBBERY	2	3	-1	-33%
THEFT FROM MOTOR VEHICLES	29	31	-2	-6%
THEFT/HANDLING	39	18	21	117%
THEFT OF MOTOR VEHICLES	6	3	3	100%
VIOLENCE OFFENCES	22	21	1	5%
Sum:	159	119	40	34%

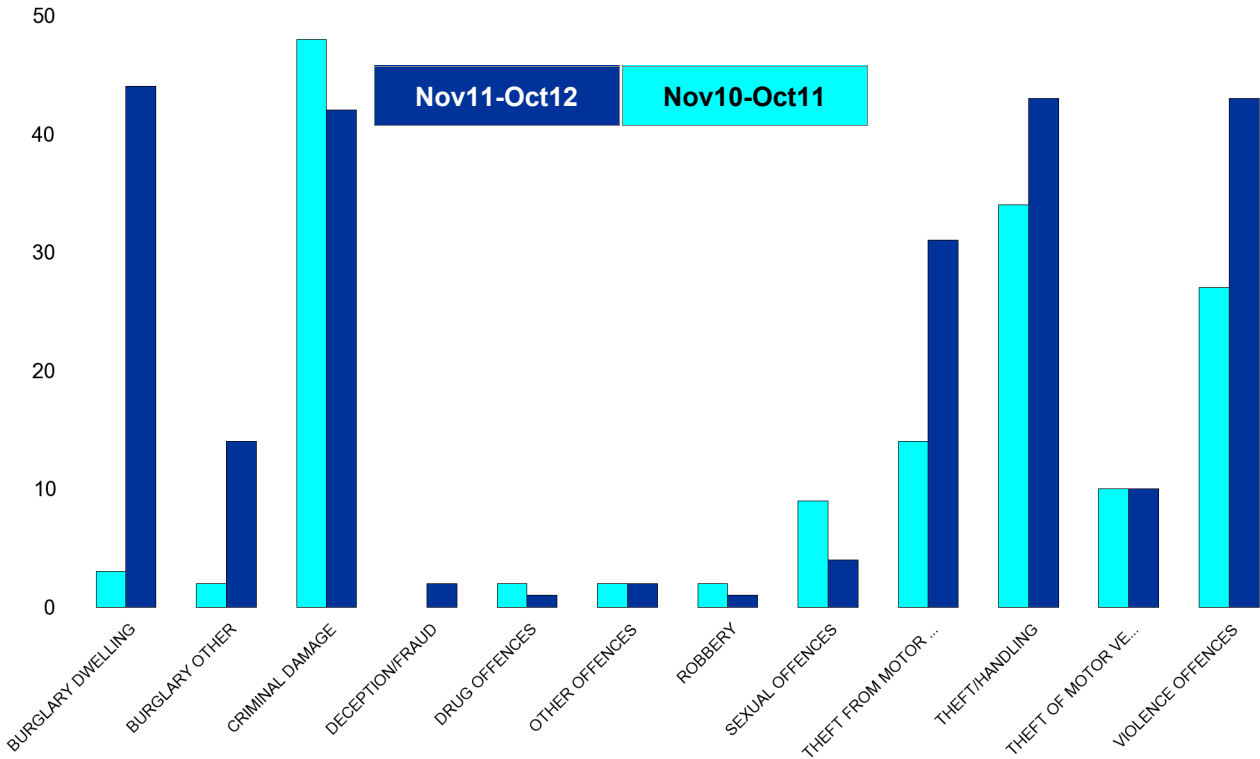
No of Cleared Up Crimes	Detection Rate (Past 12 Months)
0	0%
0	0%
1	6%
2	29%
1	100%
1	20%
1	50%
0	0%
12	31%
0	0%
13	59%
31	19%



Kettering Town Forum Report

Ise Lodge

HO Group	No of Crimes (Nov11-Oct12)	No of Crimes (Nov10-Oct11)	+/- Crime	% Change	No of Cleared Up Crimes	Detection Rate (Past 12 Months)
BURGLARY DWELLING	44	3	41	1367%	0	0%
BURGLARY OTHER	14	2	12	600%	1	7%
CRIMINAL DAMAGE	42	48	-6	-13%	2	5%
DECEPTION/FRAUD	2	0	2	0%	0	0%
DRUG OFFENCES	1	2	-1	-50%	1	100%
OTHER OFFENCES	2	2	0	0%	2	100%
ROBBERY	1	2	-1	-50%	0	0%
SEXUAL OFFENCES	4	9	-5	-56%	1	25%
THEFT FROM MOTOR VEHICLES	31	14	17	121%	1	3%
THEFT/HANDLING	43	34	9	26%	8	19%
THEFT OF MOTOR VEHICLES	10	10	0	0%	4	40%
VIOLENCE OFFENCES	43	27	16	59%	16	37%
Sum:	237	153	84	55%	36	15%

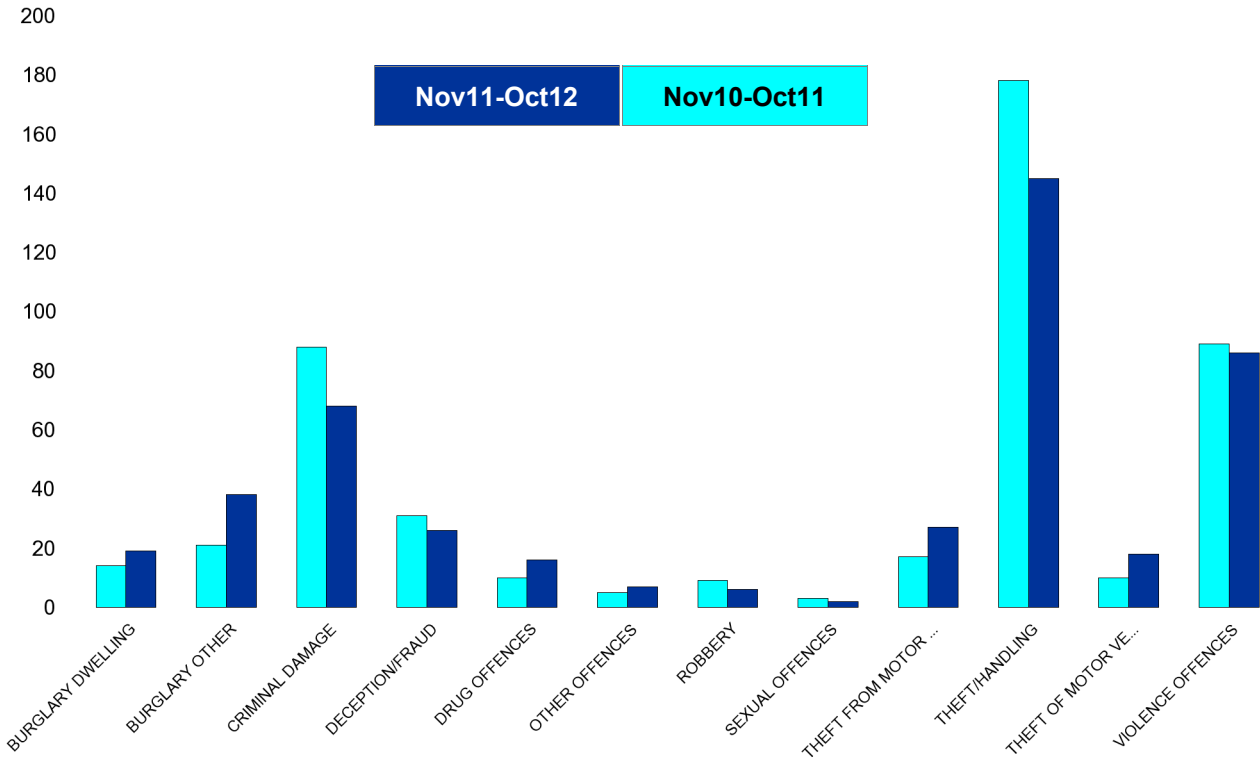


Kettering Town Forum Report

Northfield

HO Group	No of Crimes (Nov11-Oct12)	No of Crimes (Nov10-Oct11)	+/- Crime	% Change
BURGLARY DWELLING	19	14	5	36%
BURGLARY OTHER	38	21	17	81%
CRIMINAL DAMAGE	68	88	-20	-23%
DECEPTION/FRAUD	26	31	-5	-16%
DRUG OFFENCES	16	10	6	60%
OTHER OFFENCES	7	5	2	40%
ROBBERY	6	9	-3	-33%
SEXUAL OFFENCES	2	3	-1	-33%
THEFT FROM MOTOR VEHICLES	27	17	10	59%
THEFT/HANDLING	145	178	-33	-19%
THEFT OF MOTOR VEHICLES	18	10	8	80%
VIOLENCE OFFENCES	86	89	-3	-3%
Sum:	458	475	-17	-4%

No of Cleared Up Crimes	Detection Rate (Past 12 Months)
1	5%
1	3%
9	13%
8	31%
13	81%
4	57%
4	67%
0	0%
0	0%
83	57%
3	17%
31	36%
157	34%

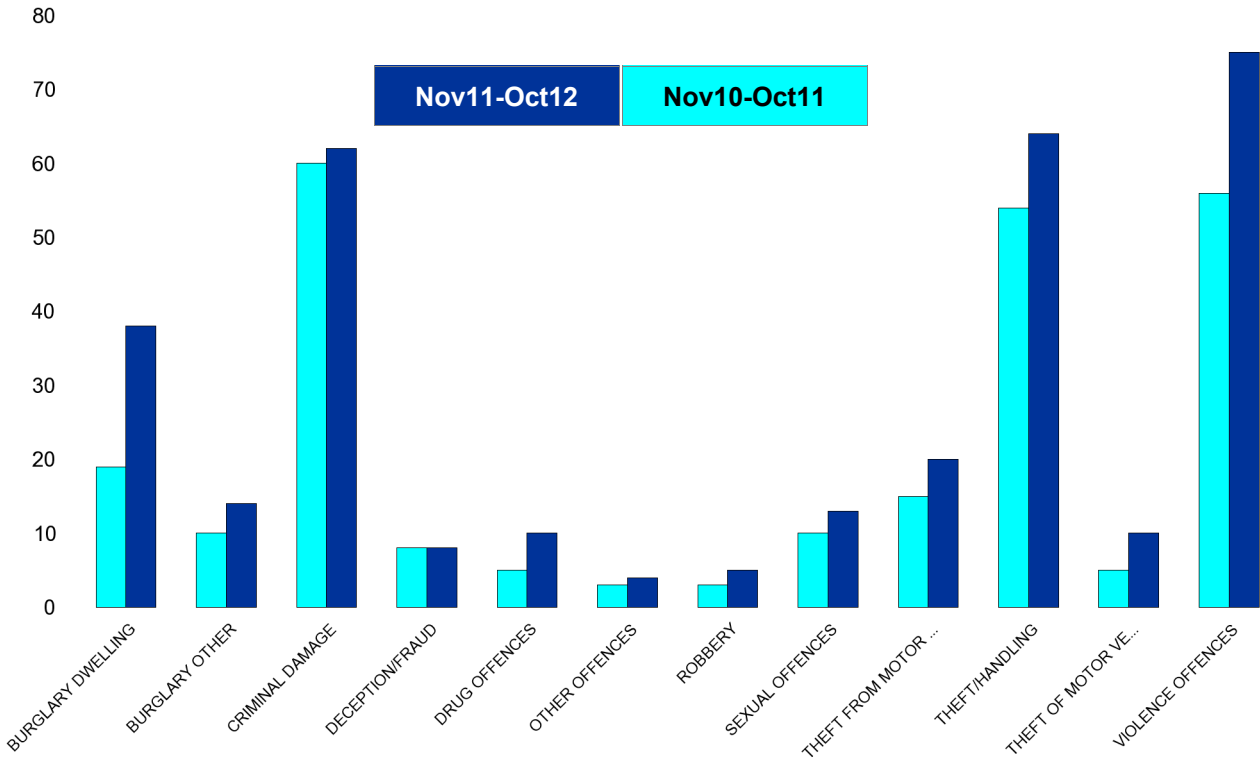


Kettering Town Forum Report

Pipers Hill

HO Group	No of Crimes (Nov11-Oct12)	No of Crimes (Nov10-Oct11)	+/- Crime	% Change
BURGLARY DWELLING	38	19	19	100%
BURGLARY OTHER	14	10	4	40%
CRIMINAL DAMAGE	62	60	2	3%
DECEPTION/FRAUD	8	8	0	0%
DRUG OFFENCES	10	5	5	100%
OTHER OFFENCES	4	3	1	33%
ROBBERY	5	3	2	67%
SEXUAL OFFENCES	13	10	3	30%
THEFT FROM MOTOR VEHICLES	20	15	5	33%
THEFT/HANDLING	64	54	10	19%
THEFT OF MOTOR VEHICLES	10	5	5	100%
VIOLENCE OFFENCES	75	56	19	34%
Sum:	323	248	75	30%

No of Cleared Up Crimes	Detection Rate (Past 12 Months)
1	3%
1	7%
11	18%
0	0%
8	80%
2	50%
0	0%
5	38%
2	10%
13	20%
2	20%
32	43%
77	24%

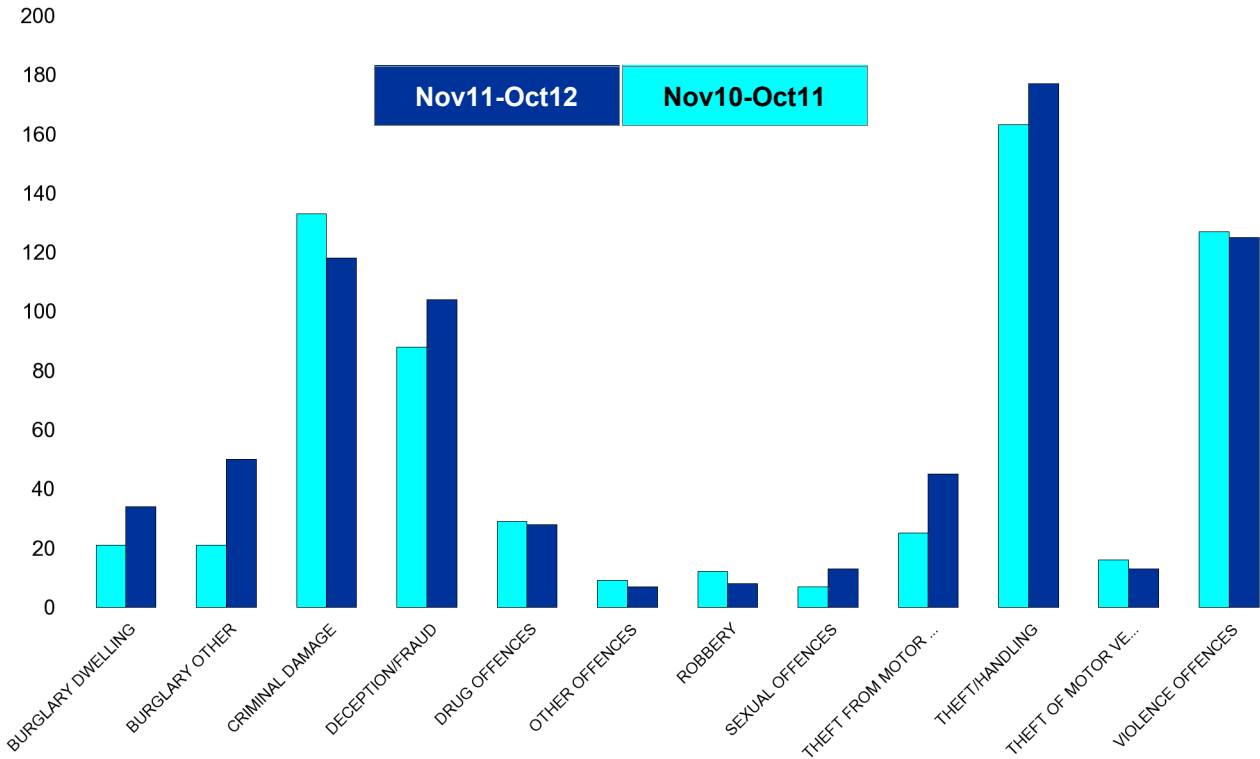


Kettering Town Forum Report

St Michaels and Wicksteed

HO Group	No of Crimes (Nov11-Oct12)	No of Crimes (Nov10-Oct11)	+/- Crime	% Change
BURGLARY DWELLING	34	21	13	62%
BURGLARY OTHER	50	21	29	138%
CRIMINAL DAMAGE	118	133	-15	-11%
DECEPTION/FRAUD	104	88	16	18%
DRUG OFFENCES	28	29	-1	-3%
OTHER OFFENCES	7	9	-2	-22%
ROBBERY	8	12	-4	-33%
SEXUAL OFFENCES	13	7	6	86%
THEFT FROM MOTOR VEHICLES	45	25	20	80%
THEFT/HANDLING	177	163	14	9%
THEFT OF MOTOR VEHICLES	13	16	-3	-19%
VIOLENCE OFFENCES	125	127	-2	-2%
Sum:	722	651	71	11%

No of Cleared Up Crimes	Detection Rate (Past 12 Months)
2	6%
1	2%
42	36%
36	35%
25	89%
5	71%
4	50%
2	15%
1	2%
53	30%
3	23%
46	37%
220	30%

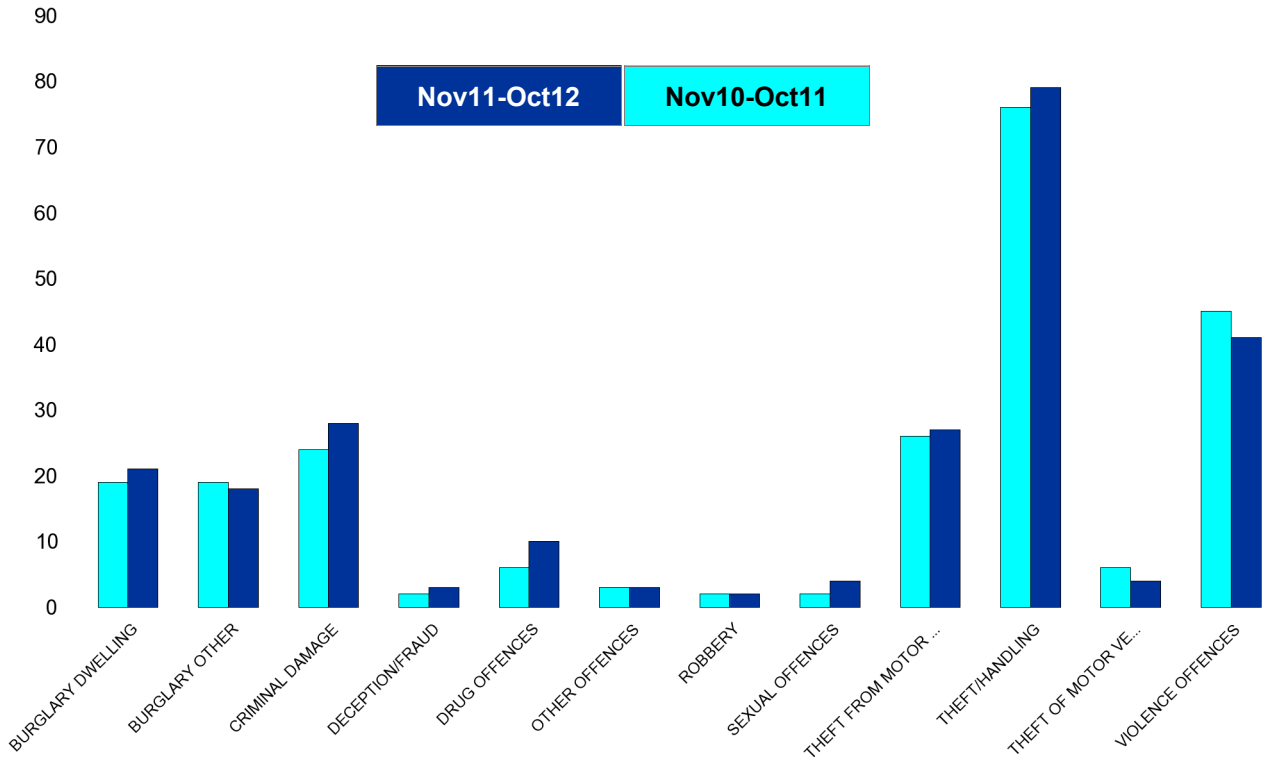


Kettering Town Forum Report

St Peters

HO Group	No of Crimes (Nov11-Oct12)	No of Crimes (Nov10-Oct11)	+/- Crime	% Change
BURGLARY DWELLING	21	19	2	11%
BURGLARY OTHER	18	19	-1	-5%
CRIMINAL DAMAGE	28	24	4	17%
DECEPTION/FRAUD	3	2	1	50%
DRUG OFFENCES	10	6	4	67%
OTHER OFFENCES	3	3	0	0%
ROBBERY	2	2	0	0%
SEXUAL OFFENCES	4	2	2	100%
THEFT FROM MOTOR VEHICLES	27	26	1	4%
THEFT/HANDLING	79	76	3	4%
THEFT OF MOTOR VEHICLES	4	6	-2	-33%
VIOLENCE OFFENCES	41	45	-4	-9%
Sum:	240	230	10	4%

No of Cleared Up Crimes	Detection Rate (Past 12 Months)
0	0%
1	6%
8	29%
0	0%
5	50%
0	0%
0	0%
1	25%
2	7%
20	25%
1	25%
16	39%
54	23%

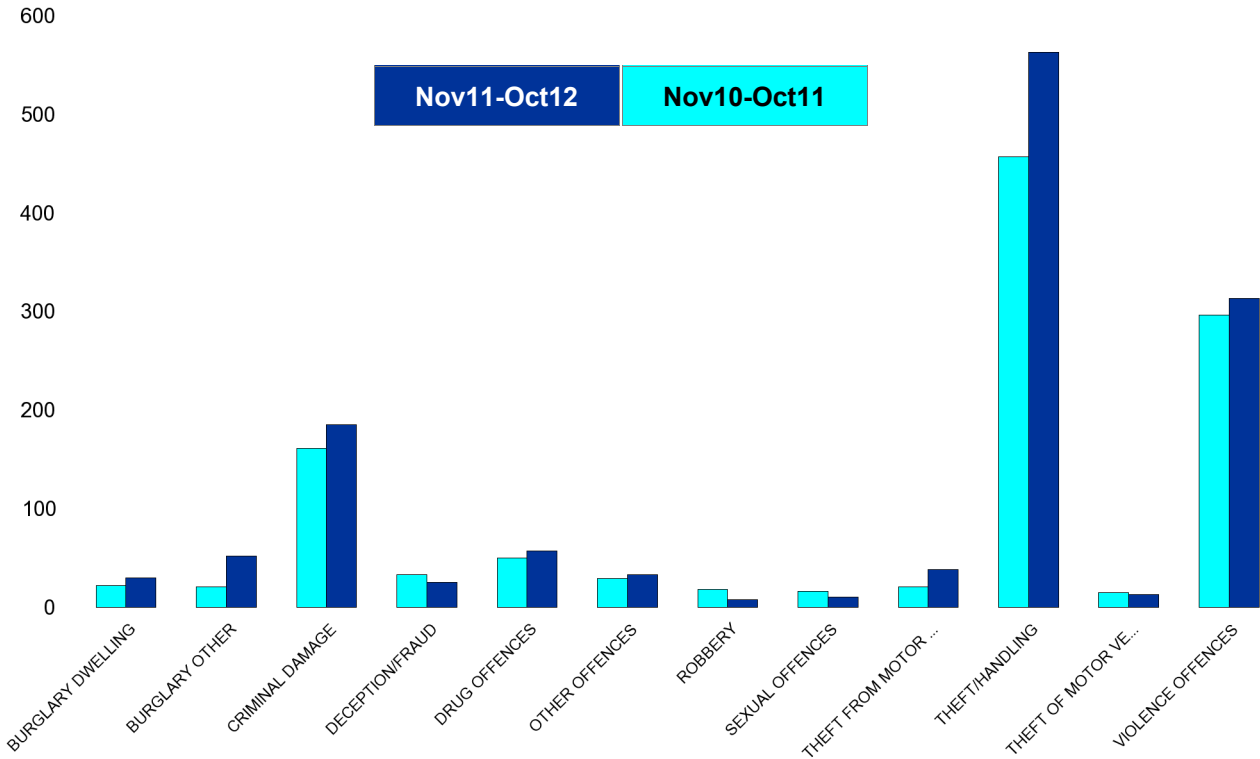


Kettering Town Forum Report

William Knibb

HO Group	No of Crimes (Nov11-Oct12)	No of Crimes (Nov10-Oct11)	+/- Crime	% Change
BURGLARY DWELLING	30	22	8	36%
BURGLARY OTHER	52	21	31	148%
CRIMINAL DAMAGE	185	161	24	15%
DECEPTION/FRAUD	25	33	-8	-24%
DRUG OFFENCES	57	50	7	14%
OTHER OFFENCES	33	29	4	14%
ROBBERY	8	18	-10	-56%
SEXUAL OFFENCES	10	16	-6	-38%
THEFT FROM MOTOR VEHICLES	38	21	17	81%
THEFT/HANDLING	563	457	106	23%
THEFT OF MOTOR VEHICLES	13	15	-2	-13%
VIOLENCE OFFENCES	313	296	17	6%
Sum:	1327	1139	188	17%

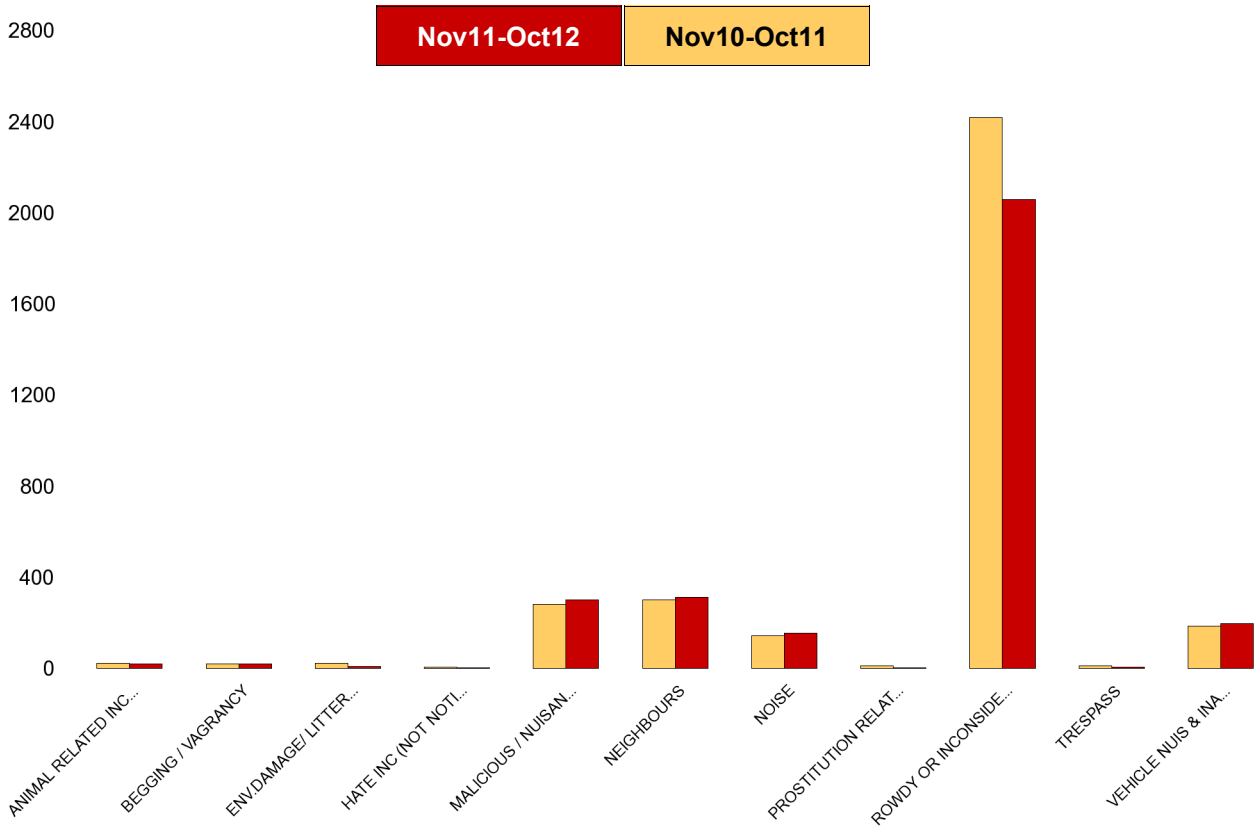
No of Cleared Up Crimes	Detection Rate (Past 12 Months)
7	23%
5	10%
38	21%
8	32%
54	95%
19	58%
4	50%
4	40%
0	0%
243	43%
4	31%
161	51%
547	41%



Kettering Town Forum Report

Kettering Town SCT - ASB

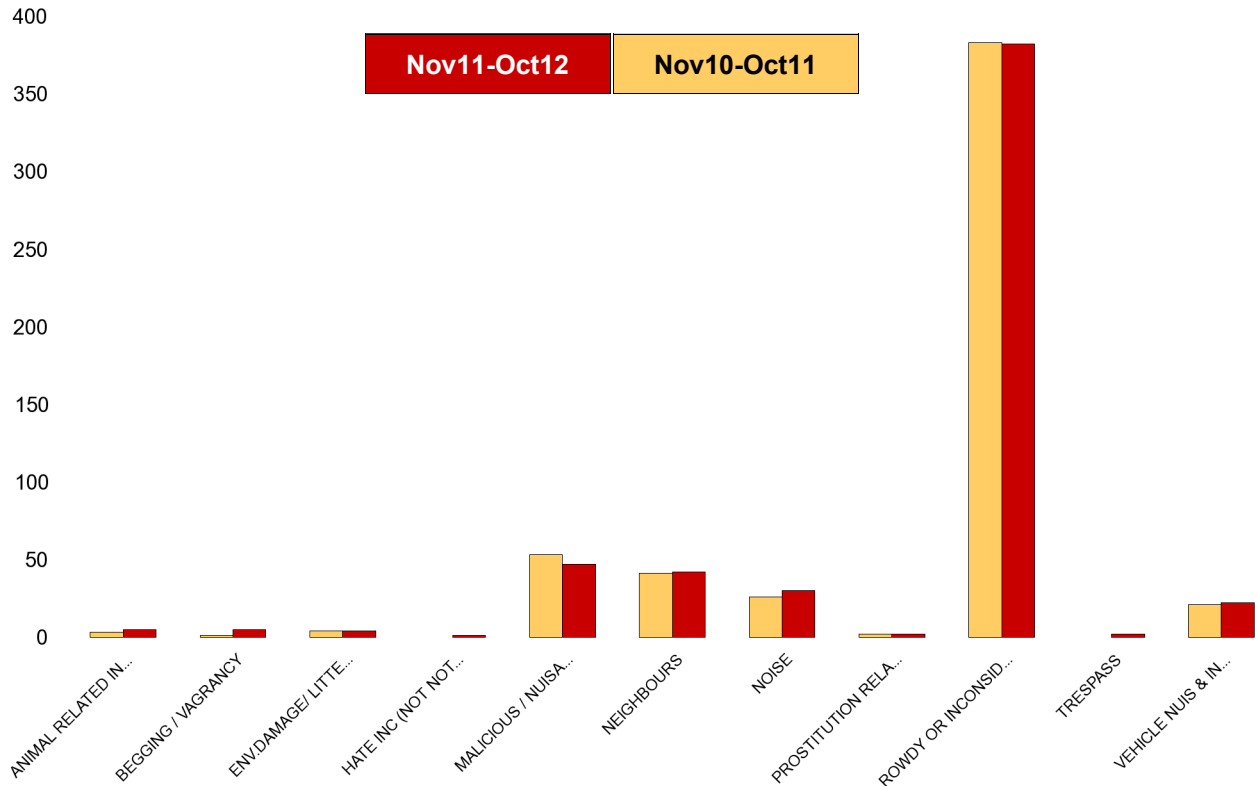
NSIR Closing Cat. 1 Desc	No of Incidents (Nov11-Oct12)	No of Incidents (Nov10-Oct11)	+/- Incidents	% Change Incidents
AB VEH NOT STOLEN/OBSTRUCT	0	15	-15	-100%
ANIMAL RELATED INC ANTI-SOCIAL	21	24	-3	-13%
BEGGING / VAGRANCY	21	22	-1	-5%
ENV.DAMAGE/ LITTER/ NEEDLES	11	25	-14	-56%
FIREWORK RELATED INCIDENTS	0	6	-6	-100%
HATE INC (NOT NOTIFIABLE CRIME	4	7	-3	-43%
HOAX CALLS	0	25	-25	-100%
MALICIOUS / NUISANCE COMMS	301	283	18	6%
NEIGHBOURS	314	302	12	4%
NOISE	156	144	12	8%
PROSTITUTION RELATED ACTIVITY	3	13	-10	-77%
ROWDY OR INCONSIDERATE BEHAV	2061	2420	-359	-15%
STREET DRINKING	0	9	-9	-100%
TRESPASS	8	12	-4	-33%
VEHICLE NUIS & INAPPROP VEH US	197	188	9	5%
Sum:	3097	3495	-398	-11%



Kettering Town Forum Report

All Saints

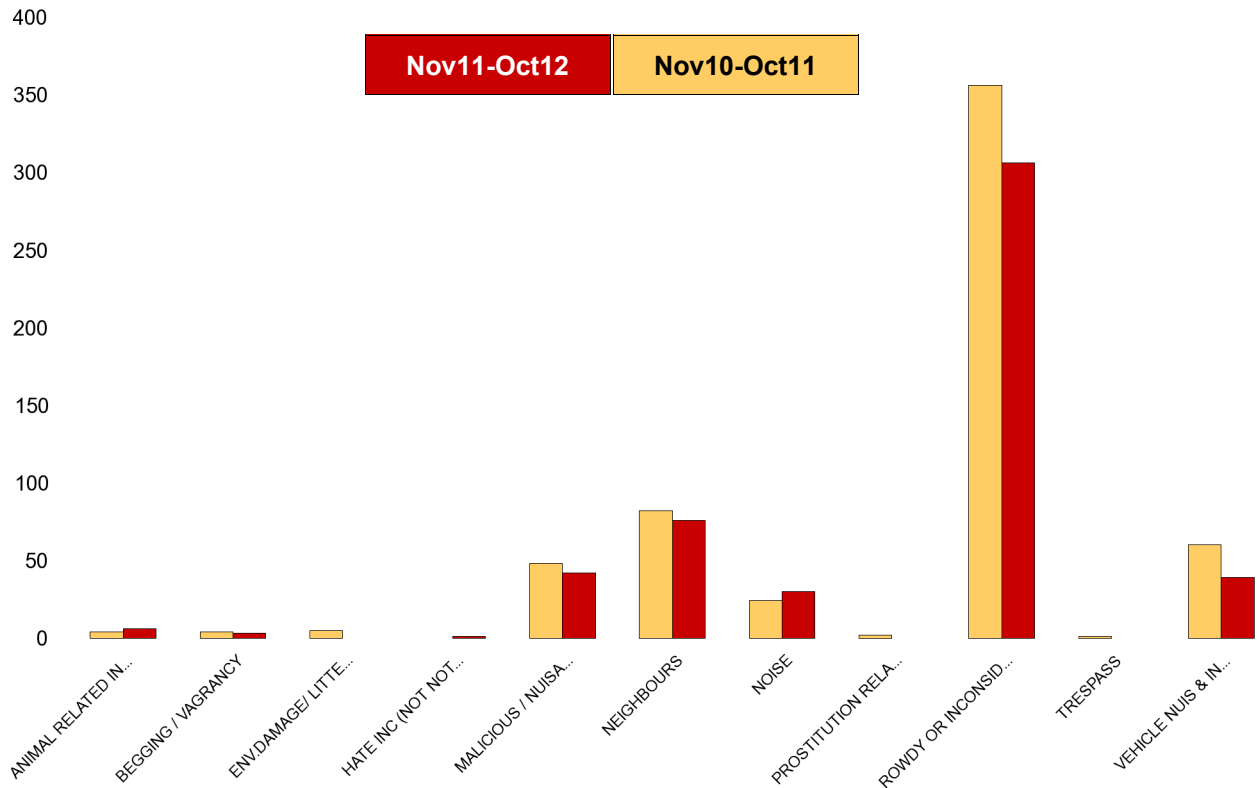
NSIR Closing Cat. 1 Desc	No of Incidents (Nov11-Oct12)	No of Incidents (Nov10-Oct11)	+/- Incidents	% Change Incidents
AB VEH NOT STOLEN/OBSTRUCT	0	2	-2	-100%
ANIMAL RELATED INC ANTI-SOCIAL	5	3	2	67%
BEGGING / VAGRANCY	5	1	4	400%
ENV.DAMAGE/ LITTER/ NEEDLES	4	4	0	0%
HATE INC (NOT NOTIFIABLE CRIME	1	0	1	0%
HOAX CALLS	0	3	-3	-100%
MALICIOUS / NUISANCE COMMS	47	53	-6	-11%
NEIGHBOURS	42	41	1	2%
NOISE	30	26	4	15%
PROSTITUTION RELATED ACTIVITY	2	2	0	0%
ROWDY OR INCONSIDERATE BEHAV	382	383	-1	-0%
STREET DRINKING	0	2	-2	-100%
TRESPASS	2	0	2	0%
VEHICLE NUIS & INAPPROP VEH US	22	21	1	5%
Sum:	542	541	1	0%



Kettering Town Forum Report

Avondale Grange

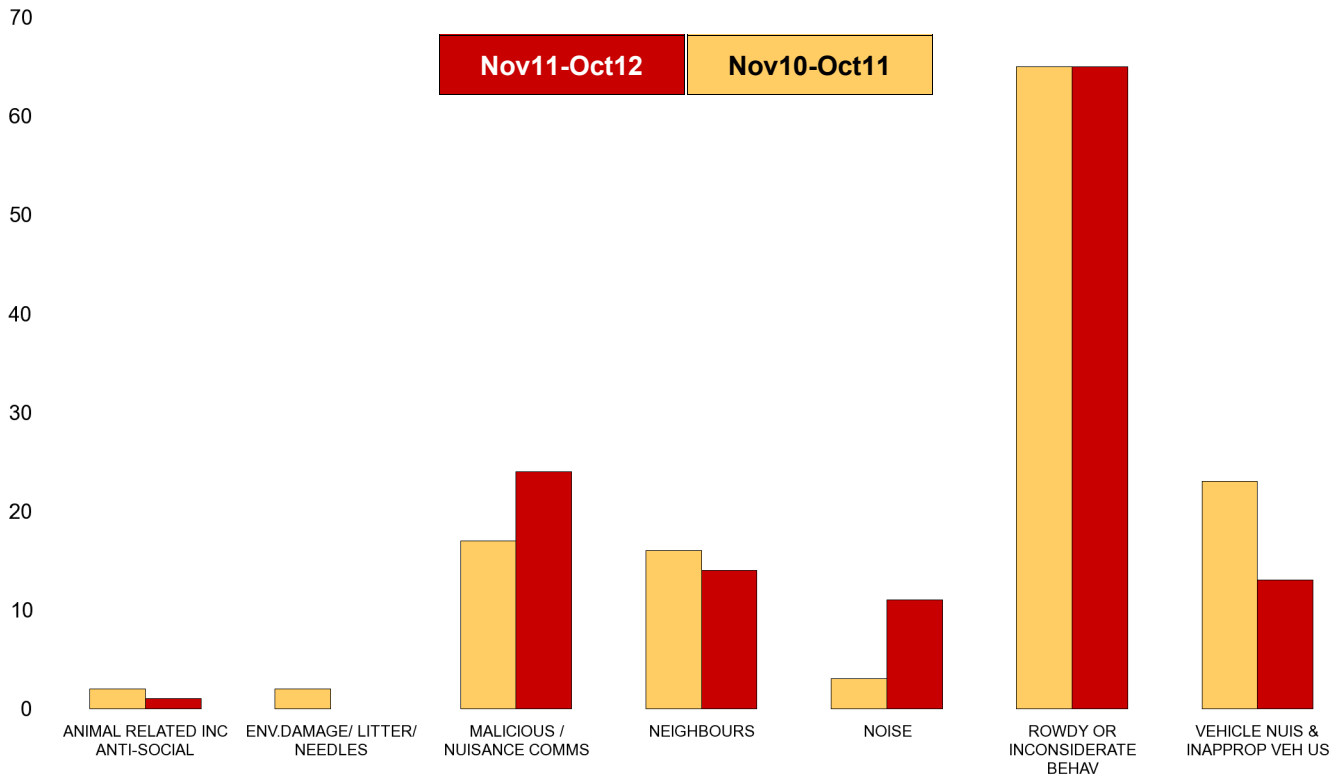
NSIR Closing Cat. 1 Desc	No of Incidents (Nov11-Oct12)	No of Incidents (Nov10-Oct11)	+/- Incidents	% Change Incidents
AB VEH NOT STOLEN/OBSTRUCT	0	1	-1	-100%
ANIMAL RELATED INC ANTI-SOCIAL	6	4	2	50%
BEGGING / VAGRANCY	3	4	-1	-25%
ENV.DAMAGE/ LITTER/ NEEDLES	0	5	-5	-100%
HATE INC (NOT NOTIFIABLE CRIME)	1	0	1	0%
HOAX CALLS	0	4	-4	-100%
MALICIOUS / NUISANCE COMMS	42	48	-6	-13%
NEIGHBOURS	76	82	-6	-7%
NOISE	30	24	6	25%
PROSTITUTION RELATED ACTIVITY	0	2	-2	-100%
ROWDY OR INCONSIDERATE BEHAV	306	356	-50	-14%
TRESPASS	0	1	-1	-100%
VEHICLE NUIS & INAPPROP VEH US	39	60	-21	-35%
Sum:	503	591	-88	-15%



Kettering Town Forum Report

Brambleside

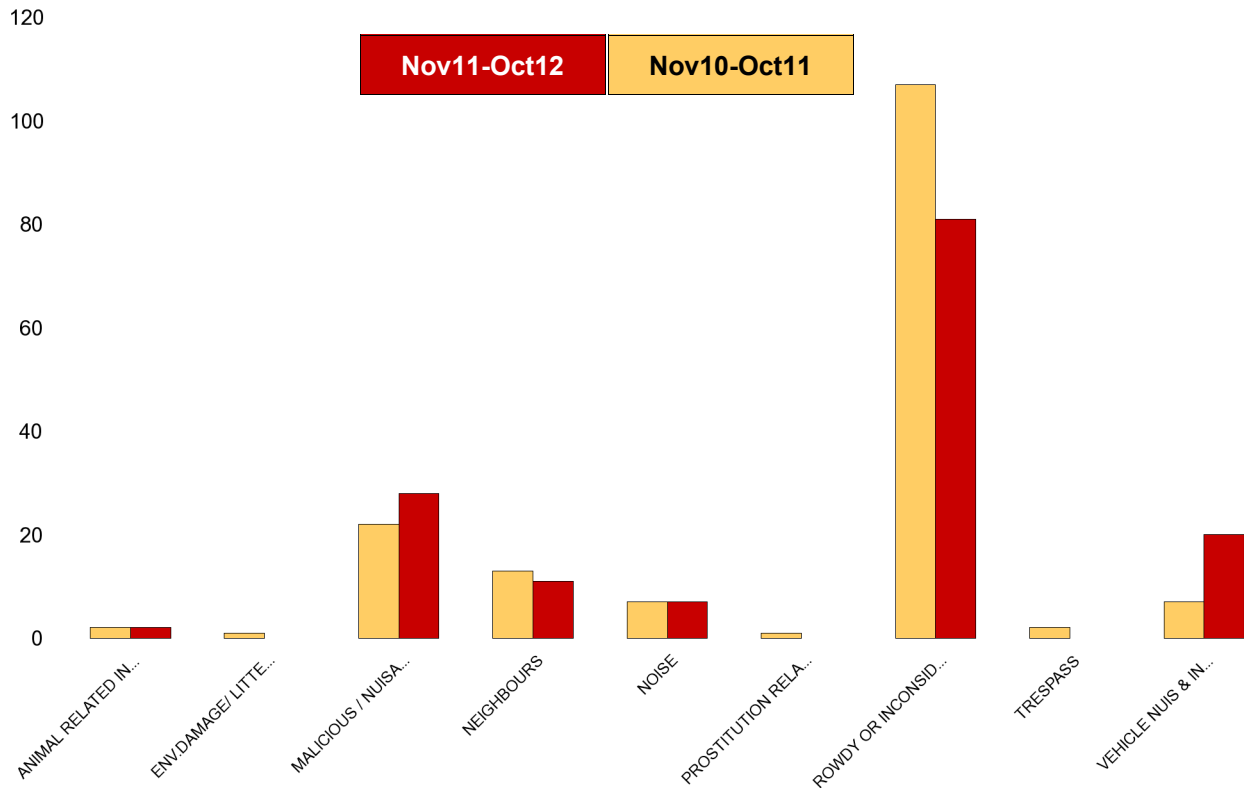
NSIR Closing Cat. 1 Desc	No of Incidents (Nov11-Oct12)	No of Incidents (Nov10-Oct11)	+/- Incidents	% Change Incidents
AB VEH NOT STOLEN/OBSTRUCT	0	3	-3	-100%
ANIMAL RELATED INC ANTI-SOCIAL	1	2	-1	-50%
ENV.DAMAGE/ LITTER/ NEEDLES	0	2	-2	-100%
FIREWORK RELATED INCIDENTS	0	1	-1	-100%
HOAX CALLS	0	2	-2	-100%
MALICIOUS / NUISANCE COMMS	24	17	7	41%
NEIGHBOURS	14	16	-2	-13%
NOISE	11	3	8	267%
ROWDY OR INCONSIDERATE BEHAV	65	65	0	0%
VEHICLE NUIS & INAPPROP VEH US	13	23	-10	-43%
Sum:	128	134	-6	-4%



Kettering Town Forum Report

Ise Lodge

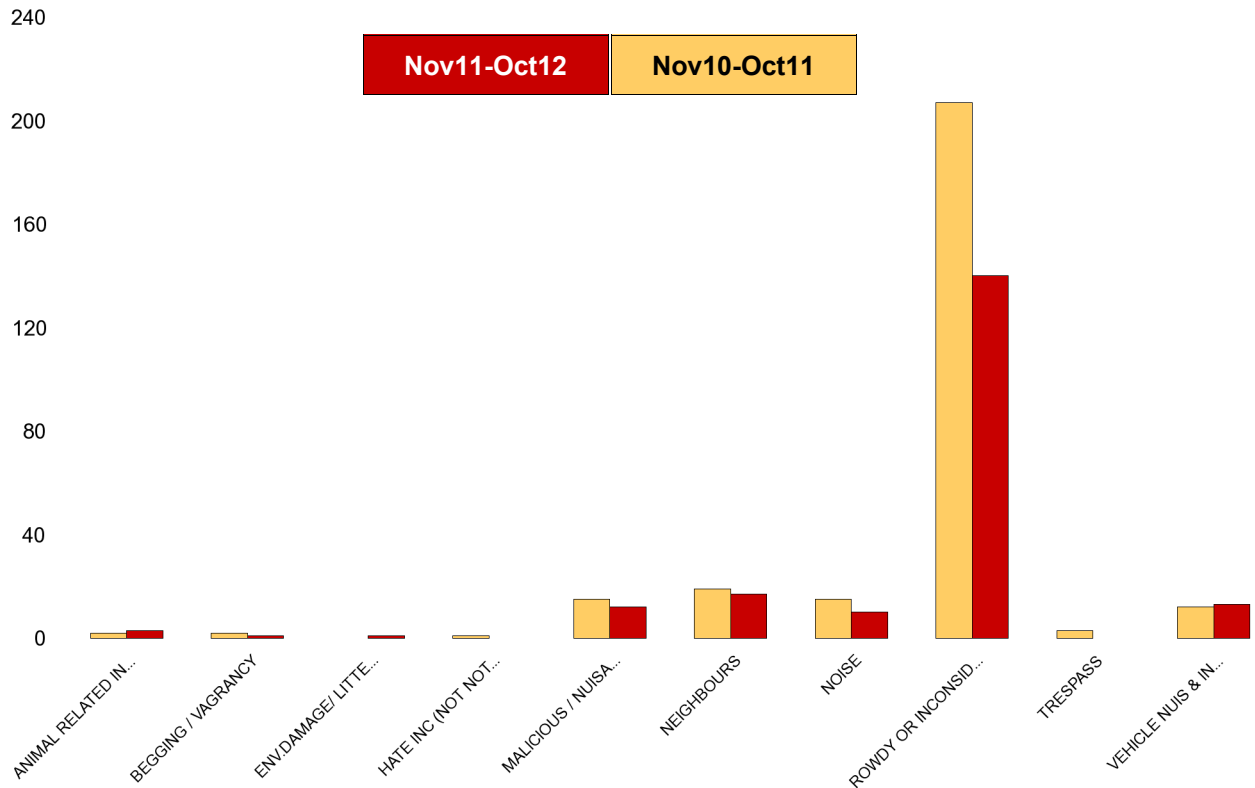
NSIR Closing Cat. 1 Desc	No of Incidents (Nov11-Oct12)	No of Incidents (Nov10-Oct11)	+/- Incidents	% Change Incidents
AB VEH NOT STOLEN/OBSTRUCT	0	2	-2	-100%
ANIMAL RELATED INC ANTI-SOCIAL	2	2	0	0%
ENV.DAMAGE/ LITTER/ NEEDLES	0	1	-1	-100%
MALICIOUS / NUISANCE COMMS	28	22	6	27%
NEIGHBOURS	11	13	-2	-15%
NOISE	7	7	0	0%
PROSTITUTION RELATED ACTIVITY	0	1	-1	-100%
ROWDY OR INCONSIDERATE BEHAV	81	107	-26	-24%
TRESPASS	0	2	-2	-100%
VEHICLE NUIS & INAPPROP VEH US	20	7	13	186%
Sum:	149	164	-15	-9%



Kettering Town Forum Report

Northfield

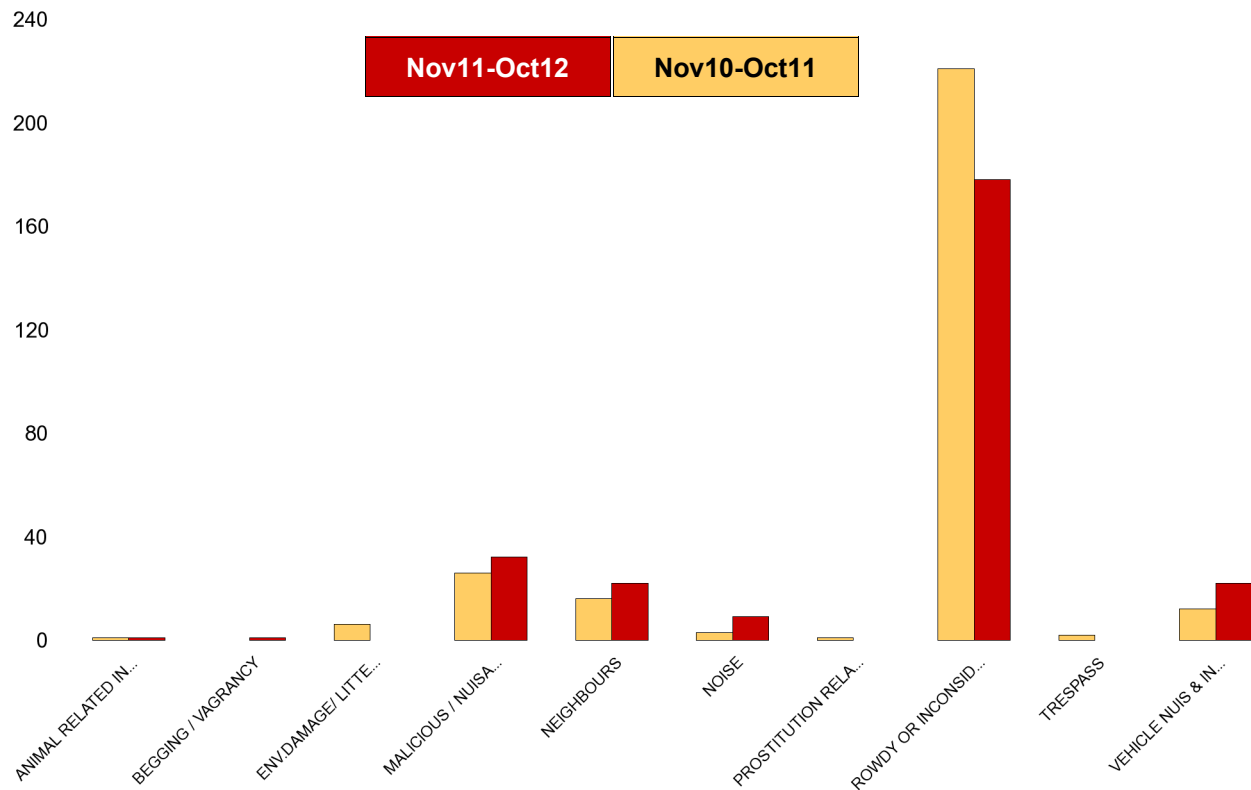
NSIR Closing Cat. 1 Desc	No of Incidents (Nov11-Oct12)	No of Incidents (Nov10-Oct11)	+/- Incidents	% Change Incidents
AB VEH NOT STOLEN/OBSTRUCT	0	3	-3	-100%
ANIMAL RELATED INC ANTI-SOCIAL	3	2	1	50%
BEGGING / VAGRANCY	1	2	-1	-50%
ENV.DAMAGE/ LITTER/ NEEDLES	1	0	1	0%
FIREWORK RELATED INCIDENTS	0	1	-1	-100%
HATE INC (NOT NOTIFIABLE CRIME	0	1	-1	-100%
HOAX CALLS	0	1	-1	-100%
MALICIOUS / NUISANCE COMMS	12	15	-3	-20%
NEIGHBOURS	17	19	-2	-11%
NOISE	10	15	-5	-33%
ROWDY OR INCONSIDERATE BEHAV	140	207	-67	-32%
STREET DRINKING	0	2	-2	-100%
TRESPASS	0	3	-3	-100%
VEHICLE NUIS & INAPPROP VEH US	13	12	1	8%
Sum:	197	283	-86	-30%



Kettering Town Forum Report

Pipers Hill

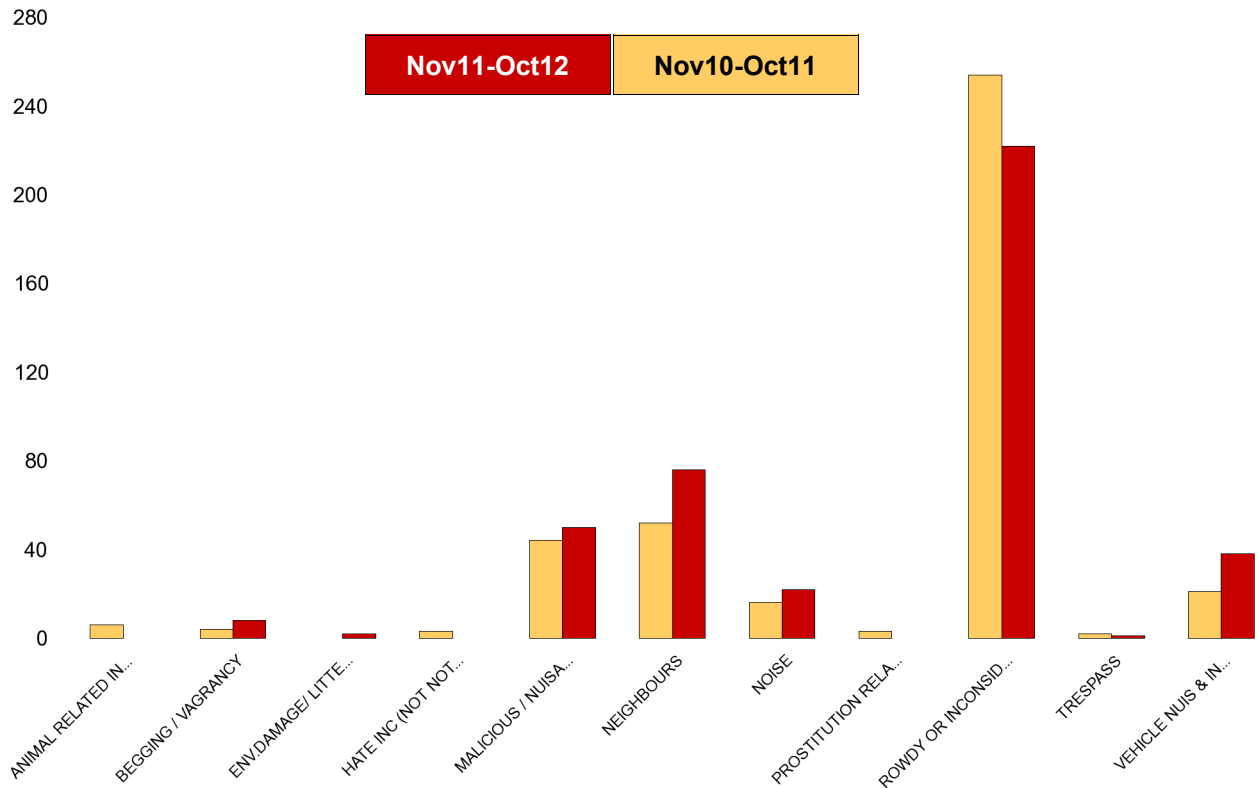
NSIR Closing Cat. 1 Desc	No of Incidents (Nov11-Oct12)	No of Incidents (Nov10-Oct11)	+/- Incidents	% Change Incidents
AB VEH NOT STOLEN/OBSTRUCT	0	1	-1	-100%
ANIMAL RELATED INC ANTI-SOCIAL	1	1	0	0%
BEGGING / VAGRANCY	1	0	1	0%
ENV.DAMAGE/ LITTER/ NEEDLES	0	6	-6	-100%
HOAX CALLS	0	3	-3	-100%
MALICIOUS / NUISANCE COMMS	32	26	6	23%
NEIGHBOURS	22	16	6	38%
NOISE	9	3	6	200%
PROSTITUTION RELATED ACTIVITY	0	1	-1	-100%
ROWDY OR INCONSIDERATE BEHAV	178	221	-43	-19%
TRESPASS	0	2	-2	-100%
VEHICLE NUIS & INAPPROP VEH US	22	12	10	83%
Sum:	265	292	-27	-9%



Kettering Town Forum Report

St Michaels and Wicksteed

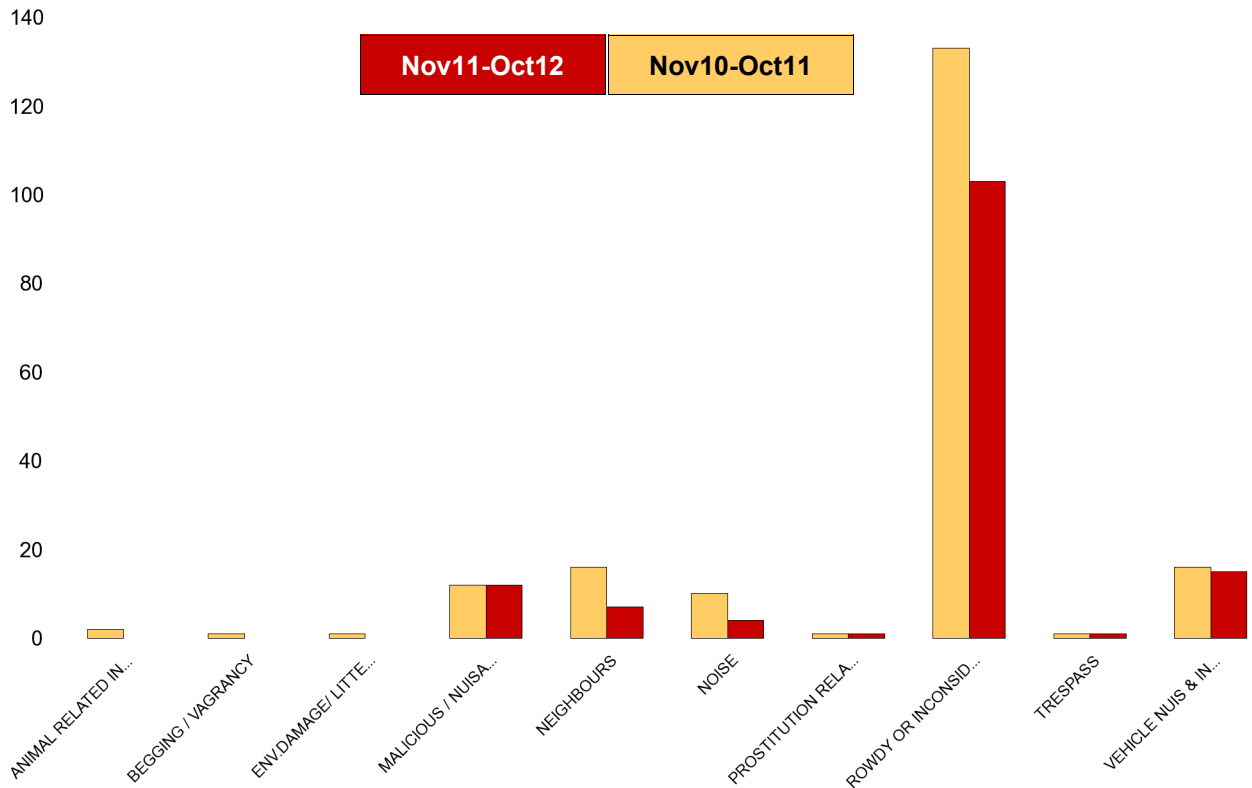
NSIR Closing Cat. 1 Desc	No of Incidents (Nov11-Oct12)	No of Incidents (Nov10-Oct11)	+/- Incidents	% Change Incidents
ANIMAL RELATED INC ANTI-SOCIAL	0	6	-6	-100%
BEGGING / VAGRANCY	8	4	4	100%
ENV.DAMAGE/ LITTER/ NEEDLES	2	0	2	0%
FIREWORK RELATED INCIDENTS	0	3	-3	-100%
HATE INC (NOT NOTIFIABLE CRIME	0	3	-3	-100%
HOAX CALLS	0	2	-2	-100%
MALICIOUS / NUISANCE COMMS	50	44	6	14%
NEIGHBOURS	76	52	24	46%
NOISE	22	16	6	38%
PROSTITUTION RELATED ACTIVITY	0	3	-3	-100%
ROWDY OR INCONSIDERATE BEHAV	222	254	-32	-13%
STREET DRINKING	0	2	-2	-100%
TRESPASS	1	2	-1	-50%
VEHICLE NUIS & INAPPROP VEH US	38	21	17	81%
Sum:	419	412	7	2%



Kettering Town Forum Report

St Peters

NSIR Closing Cat. 1 Desc	No of Incidents (Nov11-Oct12)	No of Incidents (Nov10-Oct11)	+/- Incidents	% Change Incidents
AB VEH NOT STOLEN/OBSTRUCT	0	1	-1	-100%
ANIMAL RELATED INC ANTI-SOCIAL	0	2	-2	-100%
BEGGING / VAGRANCY	0	1	-1	-100%
ENV.DAMAGE/ LITTER/ NEEDLES	0	1	-1	-100%
HOAX CALLS	0	1	-1	-100%
MALICIOUS / NUISANCE COMMS	12	12	0	0%
NEIGHBOURS	7	16	-9	-56%
NOISE	4	10	-6	-60%
PROSTITUTION RELATED ACTIVITY	1	1	0	0%
ROWDY OR INCONSIDERATE BEHAV	103	133	-30	-23%
TRESPASS	1	1	0	0%
VEHICLE NUIS & INAPPROP VEH US	15	16	-1	-6%
Sum:	143	195	-52	-27%



Kettering Town Forum Report

William Knibb

NSIR Closing Cat. 1 Desc	No of Incidents (Nov11-Oct12)	No of Incidents (Nov10-Oct11)	+/- Incidents	% Change Incidents
AB VEH NOT STOLEN/OBSTRUCT	0	2	-2	-100%
ANIMAL RELATED INC ANTI-SOCIAL	3	2	1	50%
BEGGING / VAGRANCY	3	10	-7	-70%
ENV.DAMAGE/ LITTER/ NEEDLES	4	6	-2	-33%
FIREWORK RELATED INCIDENTS	0	1	-1	-100%
HATE INC (NOT NOTIFIABLE CRIME)	2	3	-1	-33%
HOAX CALLS	0	9	-9	-100%
MALICIOUS / NUISANCE COMMS	54	46	8	17%
NEIGHBOURS	49	47	2	4%
NOISE	33	40	-7	-18%
PROSTITUTION RELATED ACTIVITY	0	3	-3	-100%
ROWDY OR INCONSIDERATE BEHAV	584	694	-110	-16%
STREET DRINKING	0	3	-3	-100%
TRESPASS	4	1	3	300%
VEHICLE NUIS & INAPPROP VEH US	15	16	-1	-6%
Sum:	751	883	-132	-15%

