

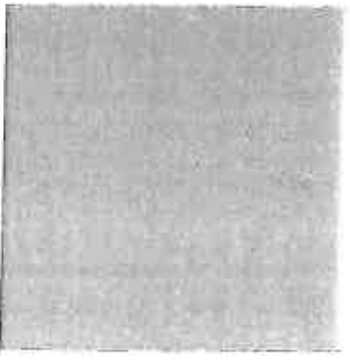
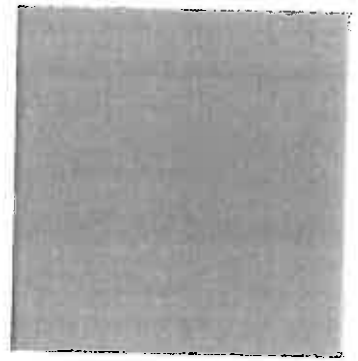
LSP Exec
13.4.12 (6)



kettering borough



community safety partnership THREE YEAR PLAN



2012
to
2015

Introduction

This is the Kettering Borough Community Safety Partnership Three Year Partnership Plan. The Crime and Disorder Act 1998 as amended by the Police Reform Act 2002, Clean Neighbourhoods and Environment Act 2005 and Police and Crime Act 2009 requires that the Borough Council, County Council, Police, Police Authority, Fire and Rescue Authority, NHS Northamptonshire and Probation Service jointly develop and implement a strategy to tackle crime and disorder including anti-social and other behaviour adversely affecting the local environment, as well as the misuse of drugs and to prevent re-offending within Kettering Borough. They are required to work in co-operation with a variety of others and to work closely with the Drug and Alcohol Action Team.

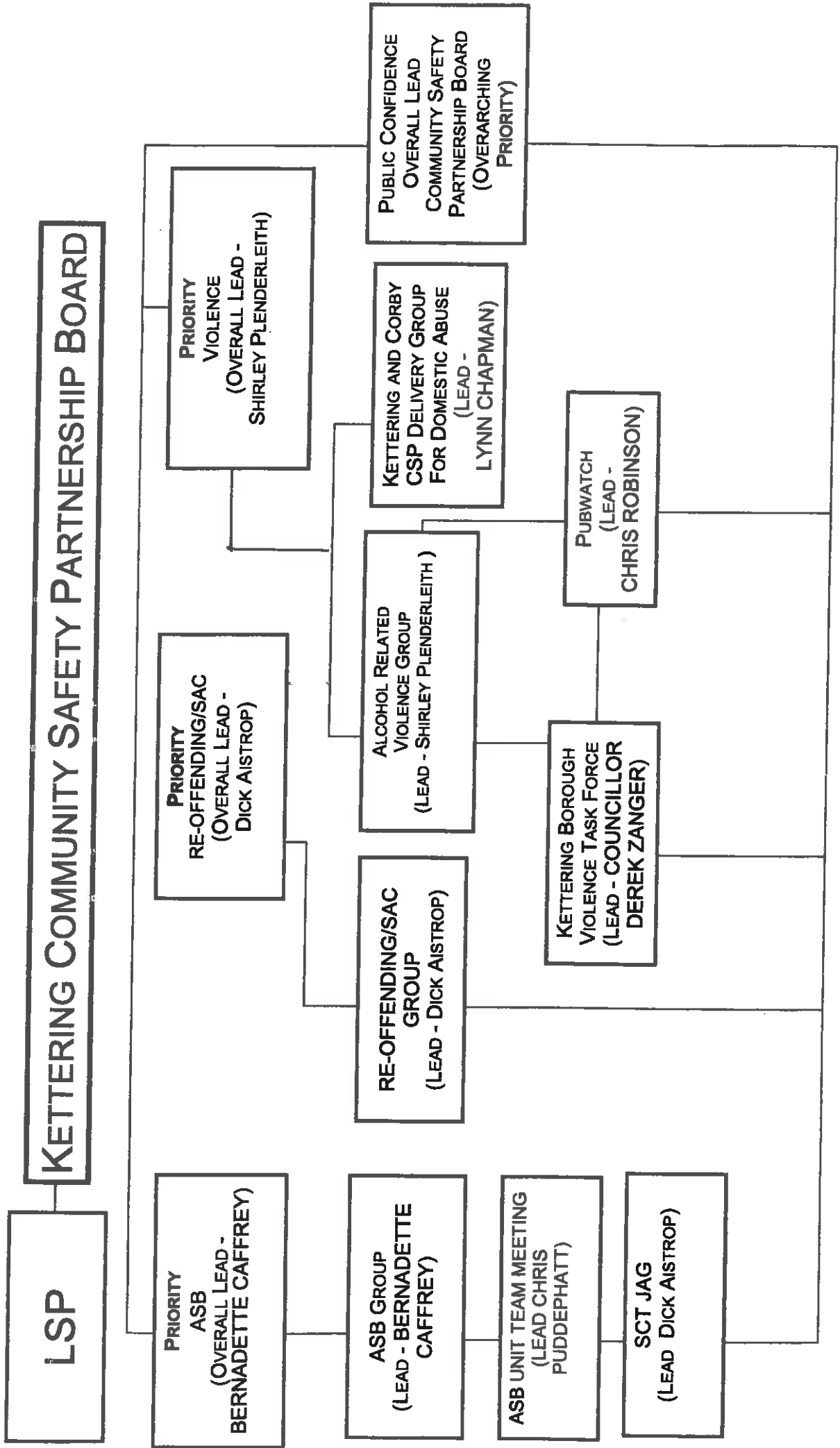
In Kettering Borough we are fully committed to working in partnership with a large number of statutory agencies, voluntary organisations and the business community. Involvement of the local community is also essential and community spirit will continue to be harnessed into making Kettering Borough a safe place to live, work and visit. Such involvement will include that of 'hard to reach' groups, individuals and communities. It is recognised that many aspects and areas of community life can help combat the destructive and negative aspects of crime, disorder, anti-social behaviour, other behaviour adversely affecting the local environment and misuse of drugs.

This Plan is effective for three years, from April 2012 – March 2015 and it aligns with other planning cycles. It will be revised annually thus reflecting any new priorities emerging from annual strategic assessments. Also included will be community priorities.

Set out within this document is how the Plan was arrived at, what the strategic priorities are and why they have been chosen. It contains the action plans for implementing the objectives and targets contained within the Plan. They will inevitably change as the Plan is implemented and reviewed.

The Kettering Borough Three Year Partnership Plan is a living working document. The targets represent a real but realistic challenge for the lead agencies, and other groups and organisations participating alongside them. However, members of the Community Safety Partnership are confident it will achieve the aim to reduce crime and disorder including anti-social and other behaviour adversely affecting the local environment, as well as the misuse of drugs and to prevent re-offending, and ensure that Kettering Borough is a safe place for people to live, work and visit.

SAFER COMMUNITIES



Progress Since Last Assessment
(2011-2014 Crime and Disorder and Drugs Strategy)

Through good Partnership working over the course of the strategy there have been significant reductions in a number of areas. Performance at the end of March 2012 was as follows:

- All Crime
Reduction of 70 crimes (1.1% reduction)
- Burglary Dwelling
Reduction of 44 crimes (13.1% reduction)
- Vehicle Crime
Reduction of 114 crimes (19.1% reduction)
- Serious Acquisitive Crime
Reduction of 156 crimes (15.4% reduction)
- ASB reported to the Police
Reduction of 1538 incidents (23.9% reduction)
- Criminal Damage
Reduction of 69 crimes (5.5% reduction)

Some activities that have contributed to the successes include:-

- Targeting areas with above average crime.
- Improved management of prolific offenders.
- A range of youth activities.
- Working with young people at risk of offending.
- Targeted outreach youth work.
- Developing new Neighbourhood Watch Schemes.
- Improved home security at vulnerable properties
- Gating and making communal alleyways secure.
- Personal household CCTV initiative.
- Marking property with forensic coding.
- Launch of "No Cold Call" areas
- "Trickster" shows warning of distraction burglaries.

*Produced by the Kettering Borough Community Safety Partnership
March 2012*

KETTERING BOROUGH COMMUNITY SAFETY PARTNERSHIP PLAN 2012-2015

- Secure by design car parks.
- Improving the service to victims by development of a multi-agency domestic abuse service.
- Developing the Retail Crime Initiative.
- Developing Kettering Town Pubwatch.
- Introducing polycarbonate replacements in Town Centre licensed premises.
- Introducing body worn video cameras for use by door supervisors.
- Launch of Street Pastors Scheme
- Providing a Dynamic Emergency Care Centre in Kettering Town Centre
- Designated Public Places Orders assisting in controlling on-street drinking.
- Developing a "fare share" taxi scheme.
- Kettering Borough Council ensuring that the Borough is clean and safe.
- Developing the Kettering Borough CCTV system.
- Installing CCTV in taxis.

KETTERING BOROUGH COMMUNITY SAFETY PARTNERSHIP PLAN 2012-2015

The Partnership Strategic Assessment has been considered by the Kettering Borough Community Safety Partnership who have identified and agreed on a number of strategic priorities/aims for the next three years (April 2012 – March 2015) as follows:-

Anti-social behaviour with a focus on:

- Responding to repeat victims and repeat neighbourhoods
- Acknowledging all age groups
- Communication

Violence with the following two strands:

- Domestic abuse
- Violence associated with the night time economy

Re-offending with strands around:

- Drugs and alcohol
- Serious acquisitive crime

Public confidence

All priorities are inter-connected and central to combating crime and disorder including anti-social and other behaviour adversely affecting the local environment as well as the misuse of drugs within Kettering Borough.

How Performance Against Priorities will be Measured

The following action plans have been agreed by the Community Safety Partnership. They set out the following:-

- Outcome (the broader consequences of the project outputs and what we are ultimately hoping to achieve).
- Targets (outcome focused – measure whether outcomes have been achieved).
- Action (the means by which the Community Safety Partnership will meet its objectives. Essentially, they list the substantive work that will be undertaken by the partnership).
- Outputs (the products and activities of the project, narrowly defined in terms of what has been done).
- Monitoring indicators (measures used to assess the success of actions in meeting objectives. These measures are a key part of the Community Safety Partnership's monitoring framework and will help to improve accountability to the Community Safety Partnership by providing a more robust means of evidencing what has been achieved).
- Resources (resources required to undertake projects and initiatives defined in terms of cost, staff or skills).
- Lead and participating agencies.
- The timescale applying.
- Risks (potential barriers to the delivery of outputs).
- Current Position (a summary of current progress against the delivery of outputs).

In respect of the action plans, there is a mix in being achievable in short, medium or long term, whilst the strategic priorities tend to show the full three year and longer term aspects. The action plans will change from year to year in pursuit of the main strategic priorities.

The Community Safety Partnership, which meets bi-monthly, will continue to be responsible for directing, co-ordinating, monitoring and evaluating all objectives.

Members of the Partnership are sufficiently senior within their own organisations to be able to commit support and resources to action plans. The Community Safety Partnership ensures that its membership always retains cross-membership with other partnerships. This is to maintain dialogue and have an awareness of what others are doing and enable co-ordination of work.

KETTERING BOROUGH COMMUNITY SAFETY PARTNERSHIP PLAN 2012-2015

The Partnership is provided regularly with the following information. Members of the Partnership are prepared to share further information arising from or affected by the data:

- Monthly – Performance Improvement Documents (these are intended to provide the Community Safety Partnership with relevant information to assist in the monitoring of performance against the targets identified in the Partnership Plan. In doing so, it is intended to identify strategic objectives that require additional improvement and assist in the identification of priorities. Included is iQuanta data).
- Monthly – report on progress against County targets.
- Bi-monthly – reports from Reducing Re-offending and Serious Acquisitive Crime Action Group, Alcohol Related Violence Action Group, Anti-social Behaviour Action Group, and Domestic Abuse Action Group.
- Bi-monthly – report from Kettering Borough Violence Task Force.
- Bi-monthly – Fire/arson data.
- Bi-monthly – Exclusion and Attendance Data.
- Bi-monthly – reports on CSP high crime areas.
- Bi-monthly – reports on progress of Safer Community Teams.
- Bi-monthly – any relevant research and survey work carried out.
- Annually – information regarding the distribution and activities of Neighbourhood Watch.