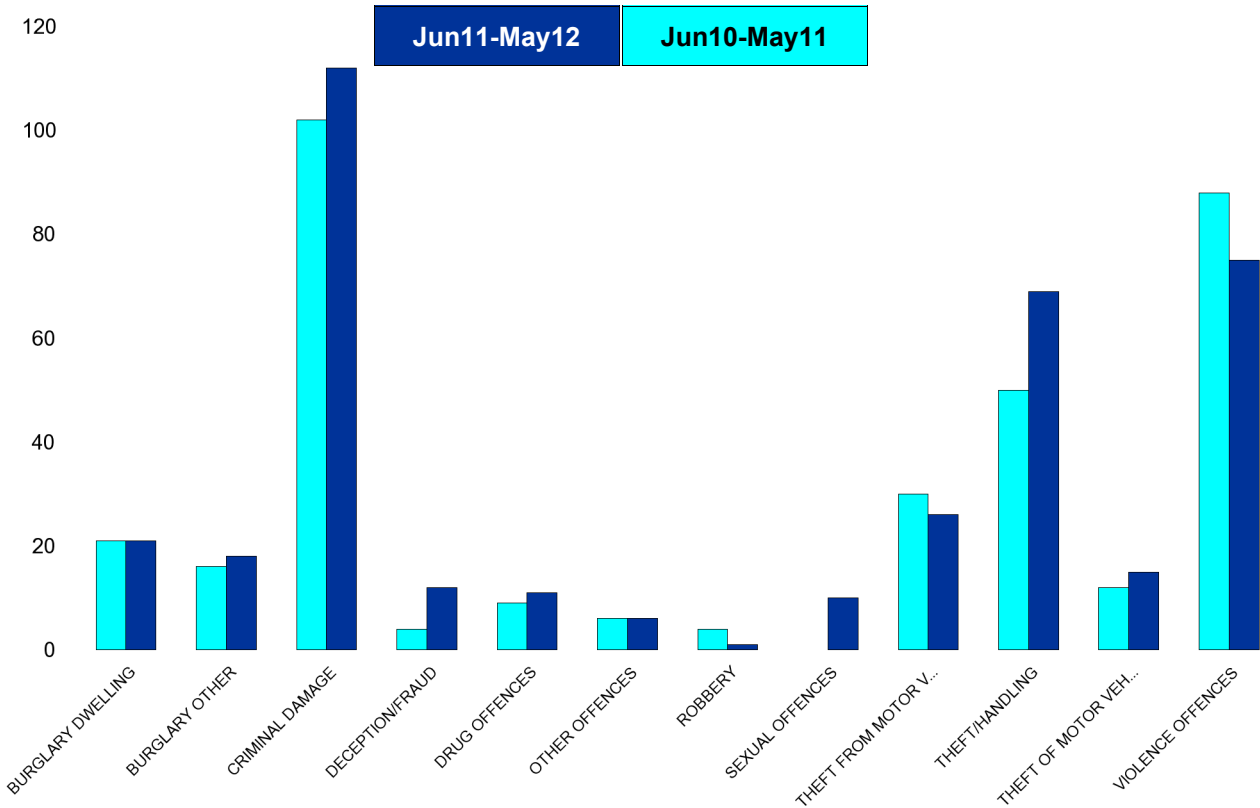


A6 Towns Forum Report

K006 & K007 Desborough - Crime

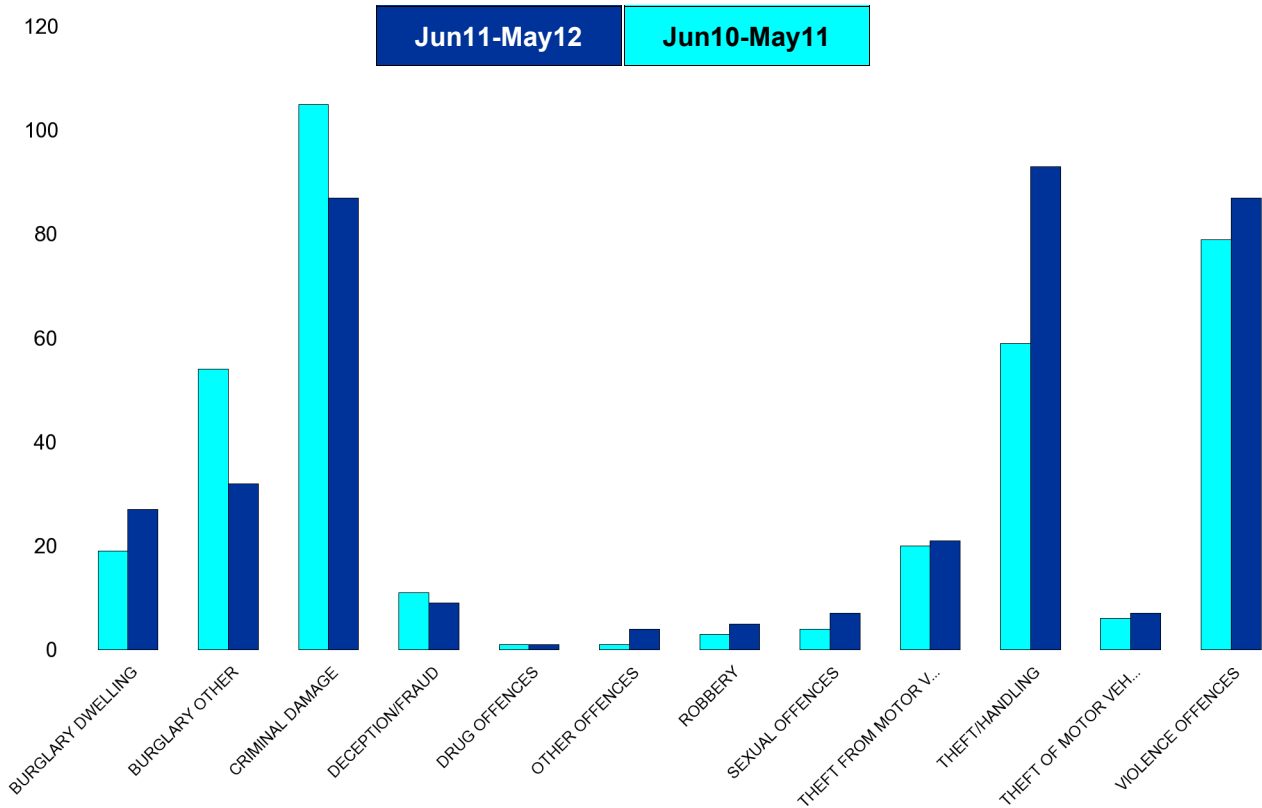
HO Group	No of Crimes (Jun11-May12)	No of Crimes (Jun10-May11)	+/- Crime	% Change	No of Cleared Up Crimes	Detection Rate (Past 12 Months)
BURGLARY DWELLING	21	21	0	0%	0	0%
BURGLARY OTHER	18	16	2	13%	1	6%
CRIMINAL DAMAGE	112	102	10	10%	23	21%
DECEPTION/FRAUD	12	4	8	200%	5	42%
DRUG OFFENCES	11	9	2	22%	6	55%
OTHER OFFENCES	6	6	0	0%	5	83%
ROBBERY	1	4	-3	-75%	1	100%
SEXUAL OFFENCES	10	0	10	0%	4	40%
THEFT FROM MOTOR VEHICLES	26	30	-4	-13%	1	4%
THEFT/HANDLING	69	50	19	38%	13	19%
THEFT OF MOTOR VEHICLES	15	12	3	25%	2	13%
VIOLENCE OFFENCES	75	88	-13	-15%	33	44%
Sum:	376	342	34	10%	94	25%



A6 Towns Forum Report

K012 Rothwell - Crime

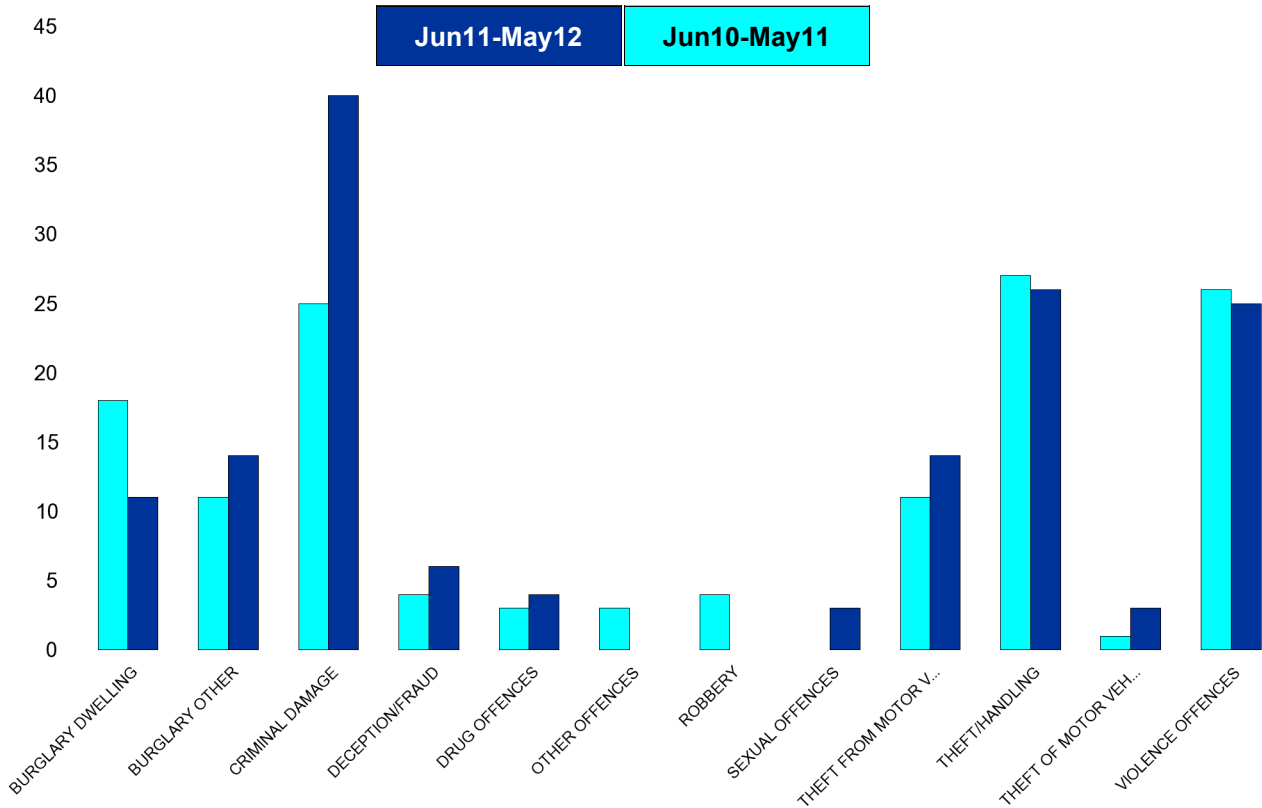
HO Group	No of Crimes (Jun11-May12)	No of Crimes (Jun10-May11)	+/- Crime	% Change	No of Cleared Up Crimes	Detection Rate (Past 12 Months)
BURGLARY DWELLING	27	19	8	42%	5	19%
BURGLARY OTHER	32	54	-22	-41%	2	6%
CRIMINAL DAMAGE	87	105	-18	-17%	10	11%
DECEPTION/FRAUD	9	11	-2	-18%	5	56%
DRUG OFFENCES	1	1	0	0%	0	0%
OTHER OFFENCES	4	1	3	300%	2	50%
ROBBERY	5	3	2	67%	1	20%
SEXUAL OFFENCES	7	4	3	75%	1	14%
THEFT FROM MOTOR VEHICLES	21	20	1	5%	2	10%
THEFT/HANDLING	93	59	34	58%	19	20%
THEFT OF MOTOR VEHICLES	7	6	1	17%	1	14%
VIOLENCE OFFENCES	87	79	8	10%	30	34%
Sum:	380	362	18	5%	78	21%



A6 Towns Forum Report

K003 Barton - Crime

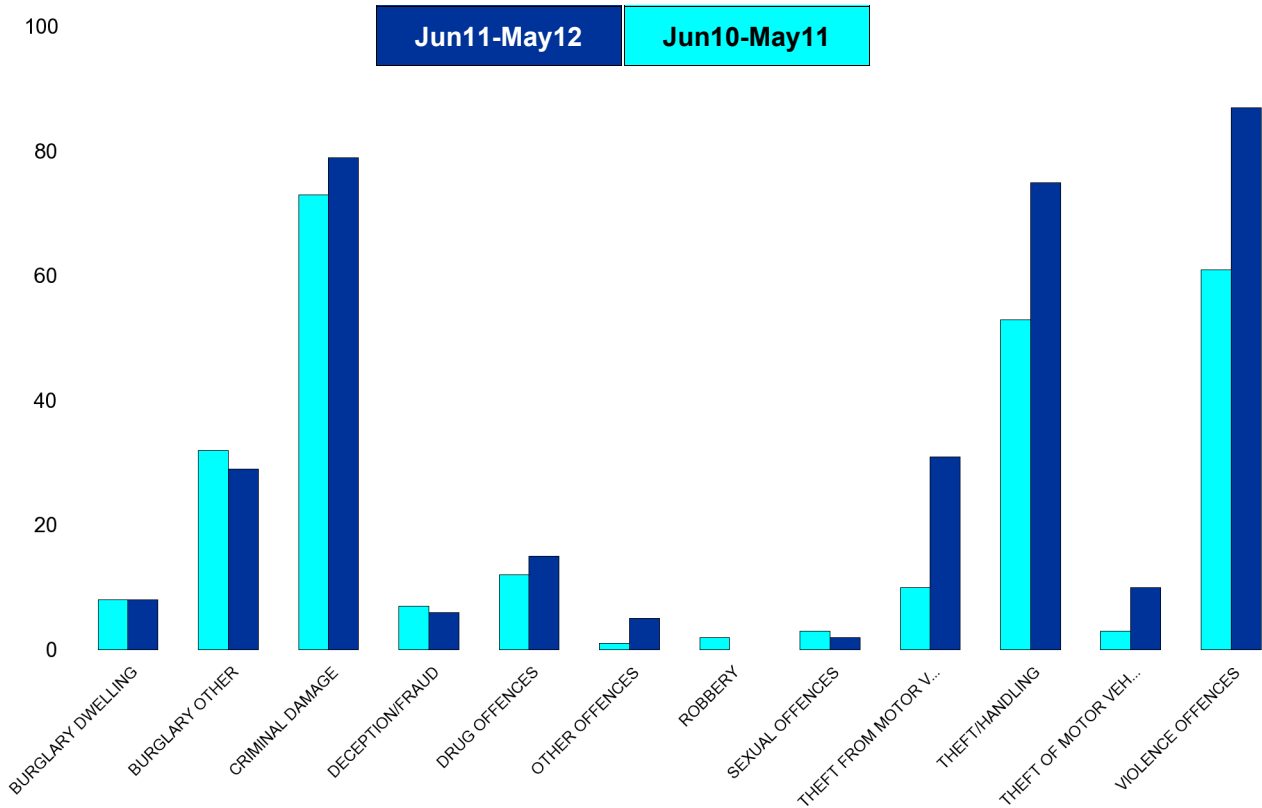
HO Group	No of Crimes (Jun11-May12)	No of Crimes (Jun10-May11)	+/- Crime	% Change	No of Cleared Up Crimes	Detection Rate (Past 12 Months)
BURGLARY DWELLING	11	18	-7	-39%	1	9%
BURGLARY OTHER	14	11	3	27%	1	7%
CRIMINAL DAMAGE	40	25	15	60%	3	8%
DECEPTION/FRAUD	6	4	2	50%	2	33%
DRUG OFFENCES	4	3	1	33%	4	100%
OTHER OFFENCES	0	3	-3	-100%	0	0%
ROBBERY	0	4	-4	-100%	1	0%
SEXUAL OFFENCES	3	0	3	0%	0	0%
THEFT FROM MOTOR VEHICLES	14	11	3	27%	9	64%
THEFT/HANDLING	26	27	-1	-4%	6	23%
THEFT OF MOTOR VEHICLES	3	1	2	200%	0	0%
VIOLENCE OFFENCES	25	26	-1	-4%	15	60%
Sum:	146	133	13	10%	42	29%



A6 Towns Forum Report

K005 Burton Latimer - Crime

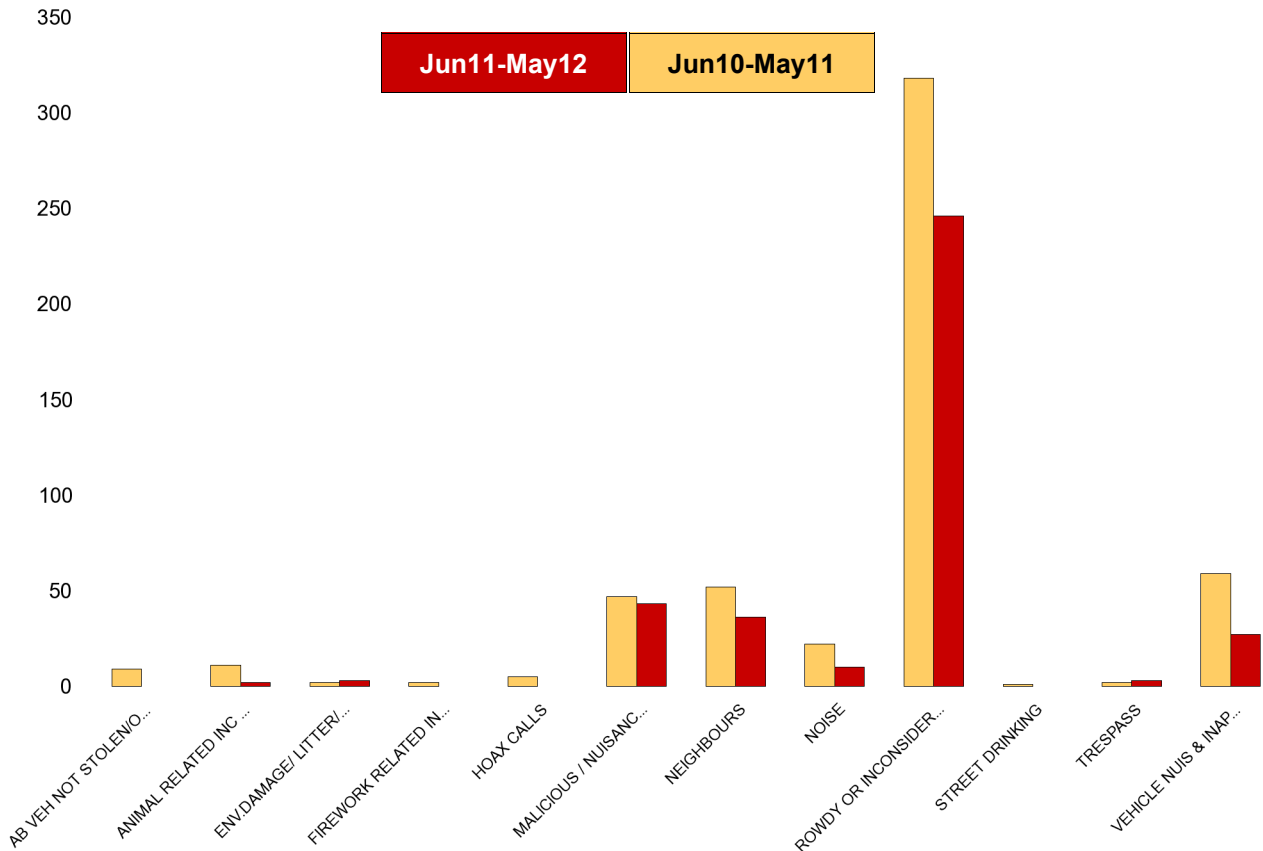
HO Group	No of Crimes (Jun11-May12)	No of Crimes (Jun10-May11)	+/- Crime	% Change	No of Cleared Up Crimes	Detection Rate (Past 12 Months)
BURGLARY DWELLING	8	8	0	0%	0	0%
BURGLARY OTHER	29	32	-3	-9%	5	17%
CRIMINAL DAMAGE	79	73	6	8%	15	19%
DECEPTION/FRAUD	6	7	-1	-14%	2	33%
DRUG OFFENCES	15	12	3	25%	12	80%
OTHER OFFENCES	5	1	4	400%	4	80%
ROBBERY	0	2	-2	-100%	0	0%
SEXUAL OFFENCES	2	3	-1	-33%	1	50%
THEFT FROM MOTOR VEHICLES	31	10	21	210%	1	3%
THEFT/HANDLING	75	53	22	42%	12	16%
THEFT OF MOTOR VEHICLES	10	3	7	233%	2	20%
VIOLENCE OFFENCES	87	61	26	43%	38	44%
Sum:	347	265	82	31%	92	27%



A6 Towns Forum Report

K006 & K007 Desborough ASB

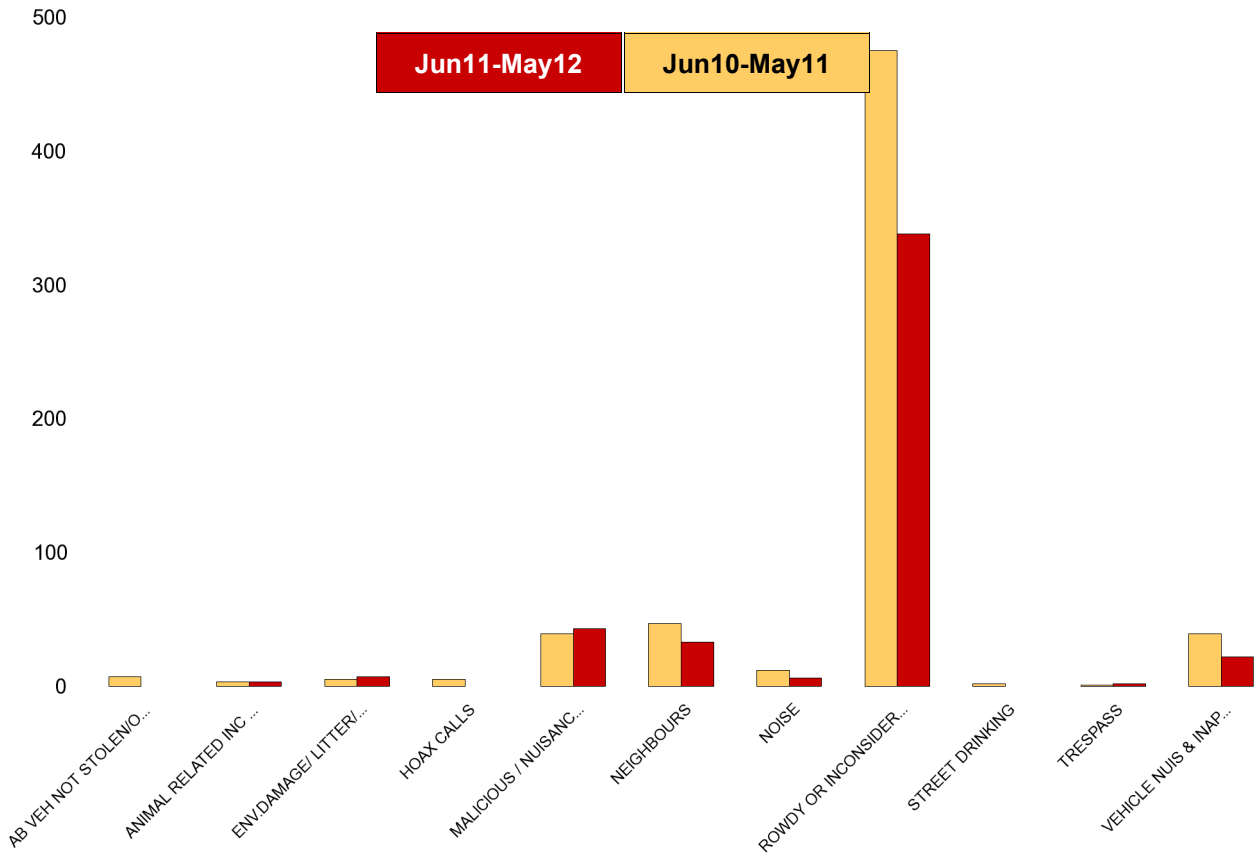
NSIR Closing Cat. 1 Desc	No of Incidents (Jun11-May12)	No of Incidents (Jun10-May11)	+/- Incidents	% Change Incidents
AB VEH NOT STOLEN/OBSTRUCT	0	9	-9	-100%
ANIMAL RELATED INC ANTI-SOCIAL	2	11	-9	-82%
ENV.DAMAGE/ LITTER/ NEEDLES	3	2	1	50%
FIREWORK RELATED INCIDENTS	0	2	-2	-100%
HOAX CALLS	0	5	-5	-100%
MALICIOUS / NUISANCE COMMS	43	47	-4	-9%
NEIGHBOURS	36	52	-16	-31%
NOISE	10	22	-12	-55%
ROWDY OR INCONSIDERATE BEHAV	246	318	-72	-23%
STREET DRINKING	0	1	-1	-100%
TRESPASS	3	2	1	50%
VEHICLE NUIS & INAPPROP VEH US	27	59	-32	-54%
Sum:	370	530	-160	-30%



A6 Towns Forum Report

K012 Rothwell ASB

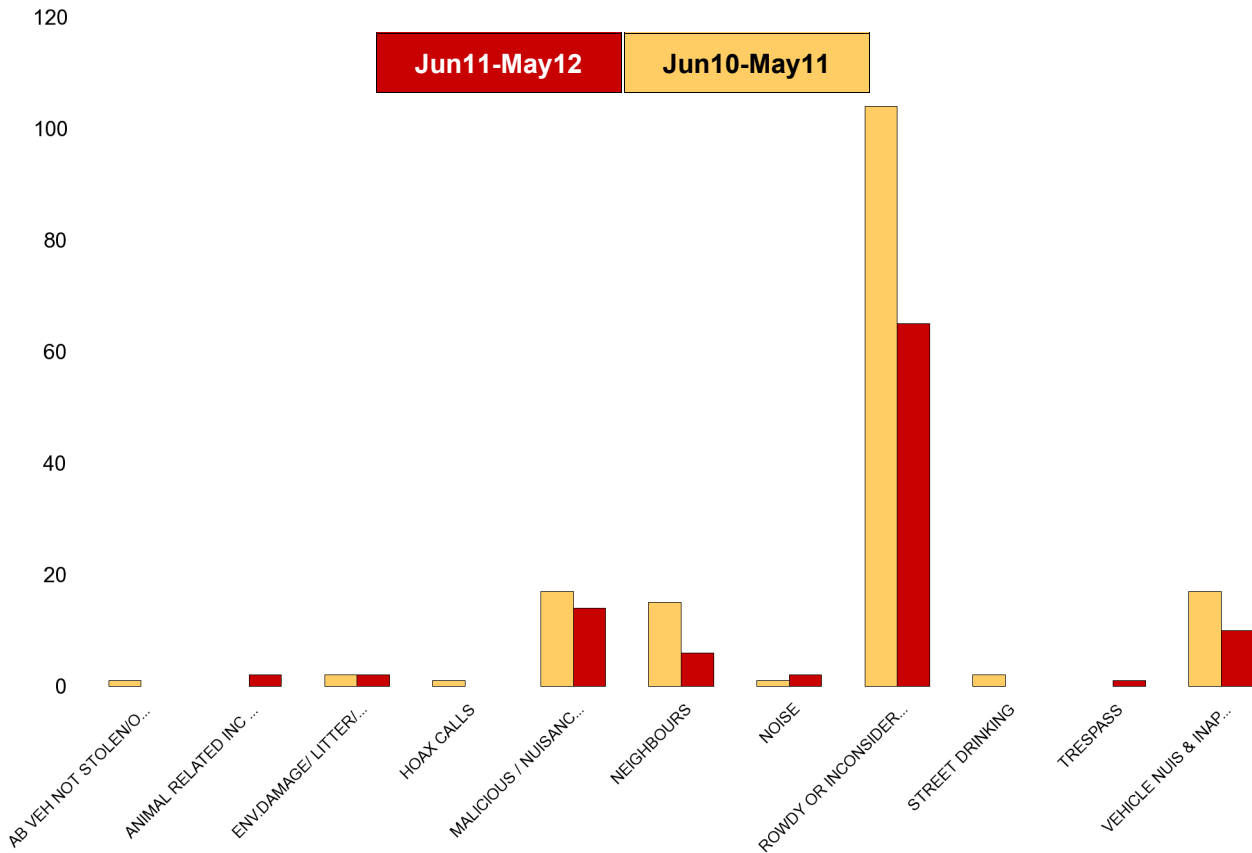
NSIR Closing Cat. 1 Desc	No of Incidents (Jun11-May12)	No of Incidents (Jun10-May11)	+/- Incidents	% Change Incidents
AB VEH NOT STOLEN/OBSTRUCT	0	7	-7	-100%
ANIMAL RELATED INC ANTI-SOCIAL	3	3	0	0%
ENV.DAMAGE/ LITTER/ NEEDLES	7	5	2	40%
HOAX CALLS	0	5	-5	-100%
MALICIOUS / NUISANCE COMMS	43	39	4	10%
NEIGHBOURS	33	47	-14	-30%
NOISE	6	12	-6	-50%
ROWDY OR INCONSIDERATE BEHAV	338	475	-137	-29%
STREET DRINKING	0	2	-2	-100%
TRESPASS	2	1	1	100%
VEHICLE NUIS & INAPPROP VEH US	22	39	-17	-44%
Sum:	454	635	-181	-29%



A6 Towns Forum Report

K003 Barton ASB

NSIR Closing Cat. 1 Desc	No of Incidents (Jun11-May12)	No of Incidents (Jun10-May11)	+/- Incidents	% Change Incidents
AB VEH NOT STOLEN/OBSTRUCT	0	1	-1	-100%
ANIMAL RELATED INC ANTI-SOCIAL	2	0	2	0%
ENV.DAMAGE/ LITTER/ NEEDLES	2	2	0	0%
HOAX CALLS	0	1	-1	-100%
MALICIOUS / NUISANCE COMMS	14	17	-3	-18%
NEIGHBOURS	6	15	-9	-60%
NOISE	2	1	1	100%
ROWDY OR INCONSIDERATE BEHAV	65	104	-39	-38%
STREET DRINKING	0	2	-2	-100%
TRESPASS	1	0	1	0%
VEHICLE NUIS & INAPPROP VEH US	10	17	-7	-41%
Sum:	102	160	-58	-36%



A6 Towns Forum Report

K005 Latimer ASB

NSIR Closing Cat. 1 Desc	No of Incidents (Jun11-May12)	No of Incidents (Jun10-May11)	+/- Incidents	% Change Incidents
AB VEH NOT STOLEN/OBSTRUCT	0	12	-12	-100%
ANIMAL RELATED INC ANTI-SOCIAL	2	3	-1	-33%
BEGGING / VAGRANCY	0	1	-1	-100%
ENV.DAMAGE/ LITTER/ NEEDLES	3	1	2	200%
FIREWORK RELATED INCIDENTS	0	1	-1	-100%
HATE INC (NOT NOTIFIABLE CRIME	0	1	-1	-100%
HOAX CALLS	0	7	-7	-100%
MALICIOUS / NUISANCE COMMS	44	43	1	2%
NEIGHBOURS	41	38	3	8%
NOISE	17	13	4	31%
ROWDY OR INCONSIDERATE BEHAV	147	209	-62	-30%
STREET DRINKING	0	2	-2	-100%
VEHICLE NUIS & INAPPROP VEH US	14	30	-16	-53%
Sum:	268	361	-93	-26%

