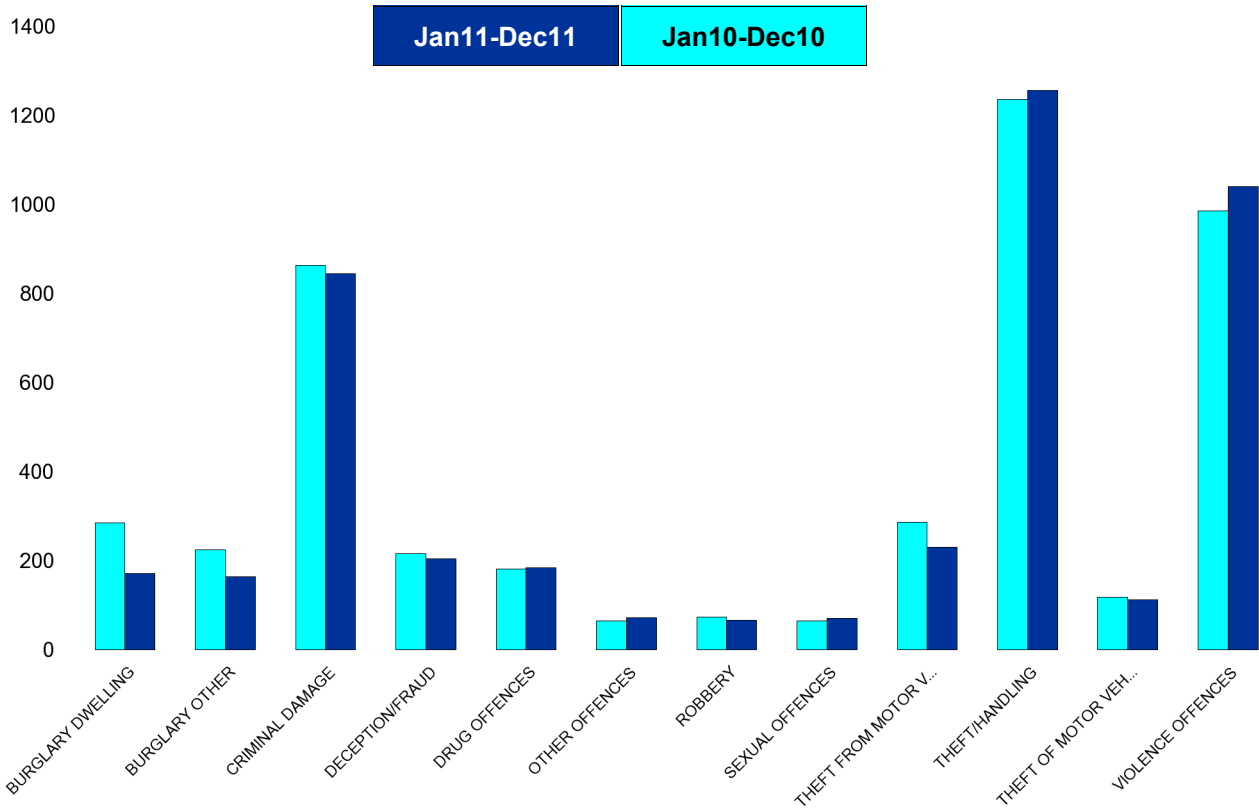


Kettering Town Forum Report

Kettering Town SCT - Crime

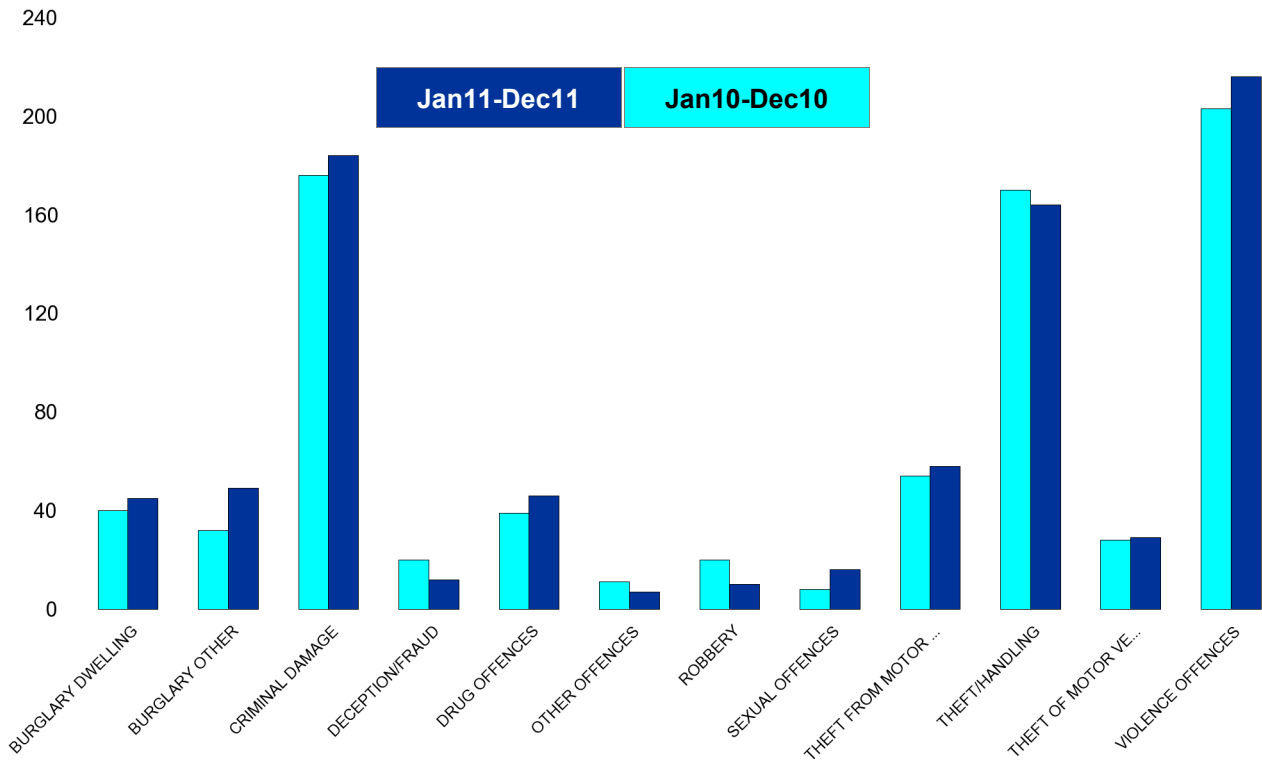
HO Group	No of Crimes (Jan11-Dec11)	No of Crimes (Jan10-Dec10)	+/- Crime	% Change	No of Cleared Up Crimes	Detection Rate (Past 12 Months)
BURGLARY DWELLING	171	285	-114	-40%	33	19%
BURGLARY OTHER	164	224	-60	-27%	11	7%
CRIMINAL DAMAGE	845	864	-19	-2%	186	22%
DECEPTION/FRAUD	204	216	-12	-6%	56	27%
DRUG OFFENCES	185	182	3	2%	172	93%
OTHER OFFENCES	72	65	7	11%	43	60%
ROBBERY	66	74	-8	-11%	17	26%
SEXUAL OFFENCES	71	65	6	9%	32	45%
THEFT FROM MOTOR VEHICLES	231	287	-56	-20%	12	5%
THEFT/HANDLING	1257	1237	20	2%	412	33%
THEFT OF MOTOR VEHICLES	113	118	-5	-4%	28	25%
VIOLENCE OFFENCES	1040	986	54	5%	441	42%
Sum:	4419	4603	-184	-4%	1443	33%



Kettering Town Forum Report

All Saints

HO Group	No of Crimes (Jan11-Dec11)	No of Crimes (Jan10-Dec10)	+/- Crime	% Change	No of Cleared Up Crimes	Detection Rate (Past 12 Months)
BURGLARY DWELLING	45	40	5	13%	13	29%
BURGLARY OTHER	49	32	17	53%	4	8%
CRIMINAL DAMAGE	184	176	8	5%	37	20%
DECEPTION/FRAUD	12	20	-8	-40%	4	33%
DRUG OFFENCES	46	39	7	18%	44	96%
OTHER OFFENCES	7	11	-4	-36%	4	57%
ROBBERY	10	20	-10	-50%	3	30%
SEXUAL OFFENCES	16	8	8	100%	7	44%
THEFT FROM MOTOR VEHICLES	58	54	4	7%	4	7%
THEFT/HANDLING	164	170	-6	-4%	46	28%
THEFT OF MOTOR VEHICLES	29	28	1	4%	4	14%
VIOLENCE OFFENCES	216	203	13	6%	83	38%
Sum:	836	801	35	4%	253	30%

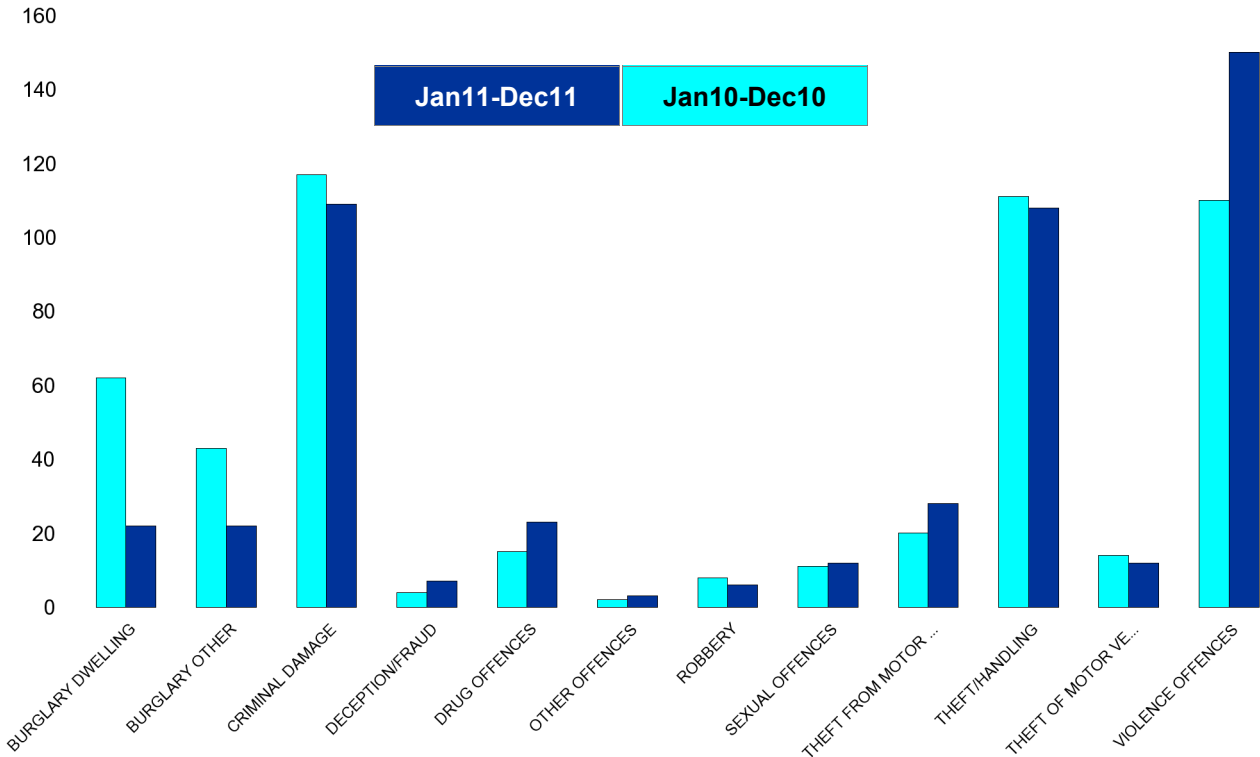


Kettering Town Forum Report

Avondale Grange

HO Group	No of Crimes (Jan11-Dec11)	No of Crimes (Jan10-Dec10)	+/- Crime	% Change
BURGLARY DWELLING	22	62	-40	-65%
BURGLARY OTHER	22	43	-21	-49%
CRIMINAL DAMAGE	109	117	-8	-7%
DECEPTION/FRAUD	7	4	3	75%
DRUG OFFENCES	23	15	8	53%
OTHER OFFENCES	3	2	1	50%
ROBBERY	6	8	-2	-25%
SEXUAL OFFENCES	12	11	1	9%
THEFT FROM MOTOR VEHICLES	28	20	8	40%
THEFT/HANDLING	108	111	-3	-3%
THEFT OF MOTOR VEHICLES	12	14	-2	-14%
VIOLENCE OFFENCES	150	110	40	36%
Sum:	502	517	-15	-3%

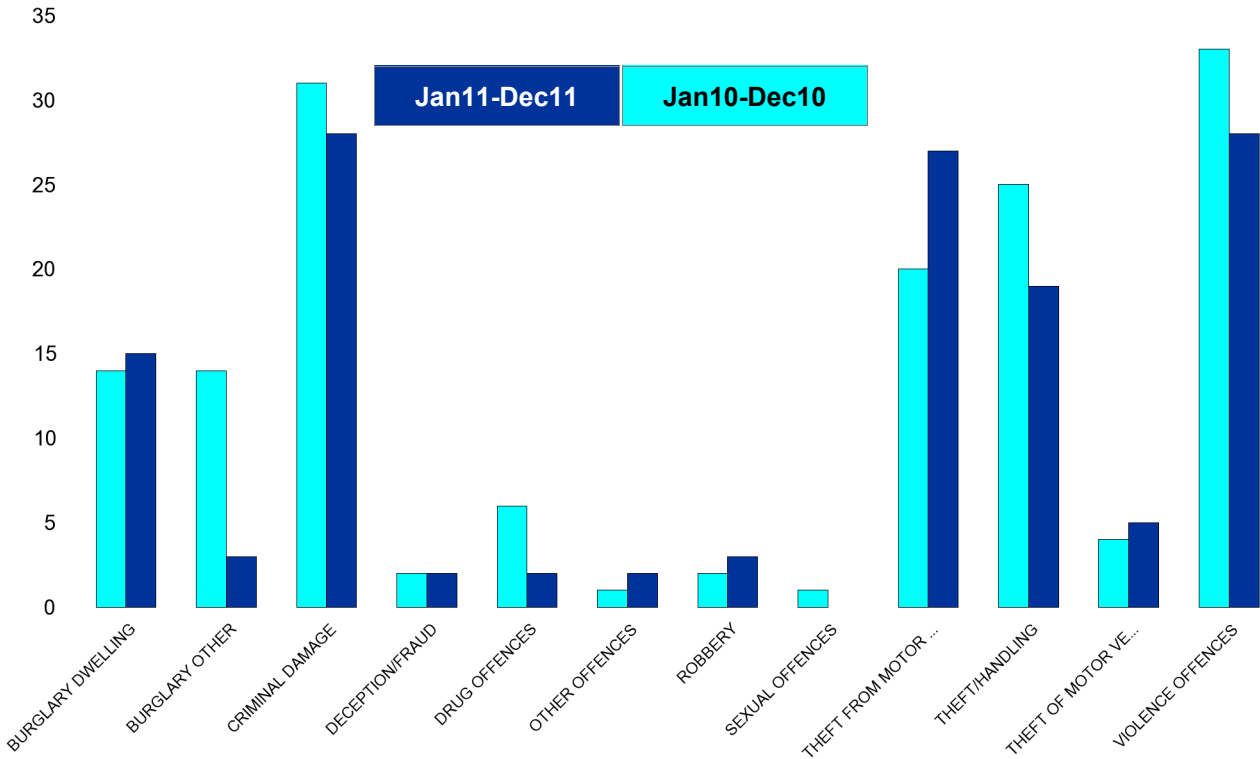
No of Cleared Up Crimes	Detection Rate (Past 12 Months)
1	5%
1	5%
18	17%
0	0%
20	87%
1	33%
2	33%
2	17%
1	4%
31	29%
1	8%
68	45%
146	29%



Kettering Town Forum Report

Brambleside

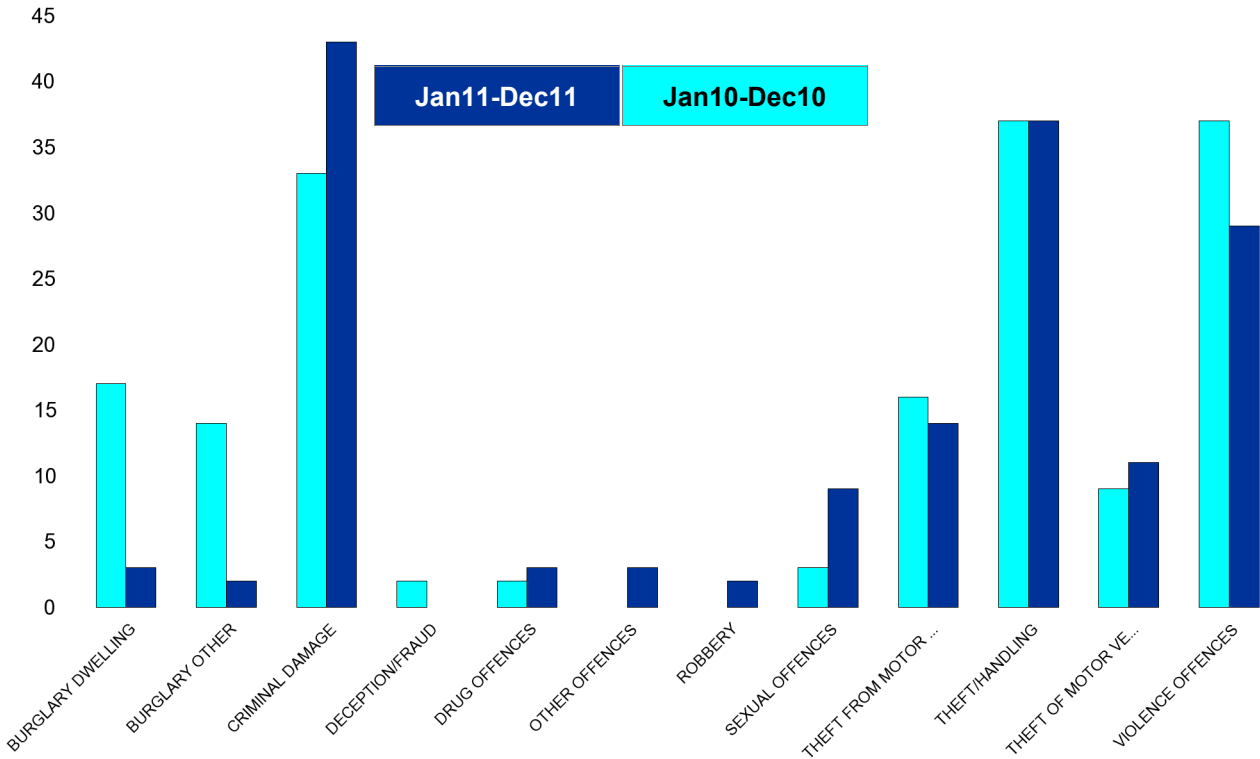
HO Group	No of Crimes (Jan11-Dec11)	No of Crimes (Jan10-Dec10)	+/- Crime	% Change	No of Cleared Up Crimes	Detection Rate (Past 12 Months)
BURGLARY DWELLING	15	14	1	7%	2	13%
BURGLARY OTHER	3	14	-11	-79%	0	0%
CRIMINAL DAMAGE	28	31	-3	-10%	6	21%
DECEPTION/FRAUD	2	2	0	0%	0	0%
DRUG OFFENCES	2	6	-4	-67%	2	100%
OTHER OFFENCES	2	1	1	100%	2	100%
ROBBERY	3	2	1	50%	1	33%
SEXUAL OFFENCES	0	1	-1	-100%	0	0%
THEFT FROM MOTOR VEHICLES	27	20	7	35%	1	4%
THEFT/HANDLING	19	25	-6	-24%	2	11%
THEFT OF MOTOR VEHICLES	5	4	1	25%	0	0%
VIOLENCE OFFENCES	28	33	-5	-15%	12	43%
Sum:	134	153	-19	-12%	28	21%



Kettering Town Forum Report

Ise Lodge

HO Group	No of Crimes (Jan11-Dec11)	No of Crimes (Jan10-Dec10)	+/- Crime	% Change	No of Cleared Up Crimes	Detection Rate (Past 12 Months)
BURGLARY DWELLING	3	17	-14	-82%	0	0%
BURGLARY OTHER	2	14	-12	-86%	0	0%
CRIMINAL DAMAGE	43	33	10	30%	3	7%
DECEPTION/FRAUD	0	2	-2	-100%	0	0%
DRUG OFFENCES	3	2	1	50%	3	100%
OTHER OFFENCES	3	0	3	0%	2	67%
ROBBERY	2	0	2	0%	0	0%
SEXUAL OFFENCES	9	3	6	200%	1	11%
THEFT FROM MOTOR VEHICLES	14	16	-2	-13%	2	14%
THEFT/HANDLING	37	37	0	0%	6	16%
THEFT OF MOTOR VEHICLES	11	9	2	22%	5	45%
VIOLENCE OFFENCES	29	37	-8	-22%	13	45%
Sum:	156	170	-14	-8%	35	22%

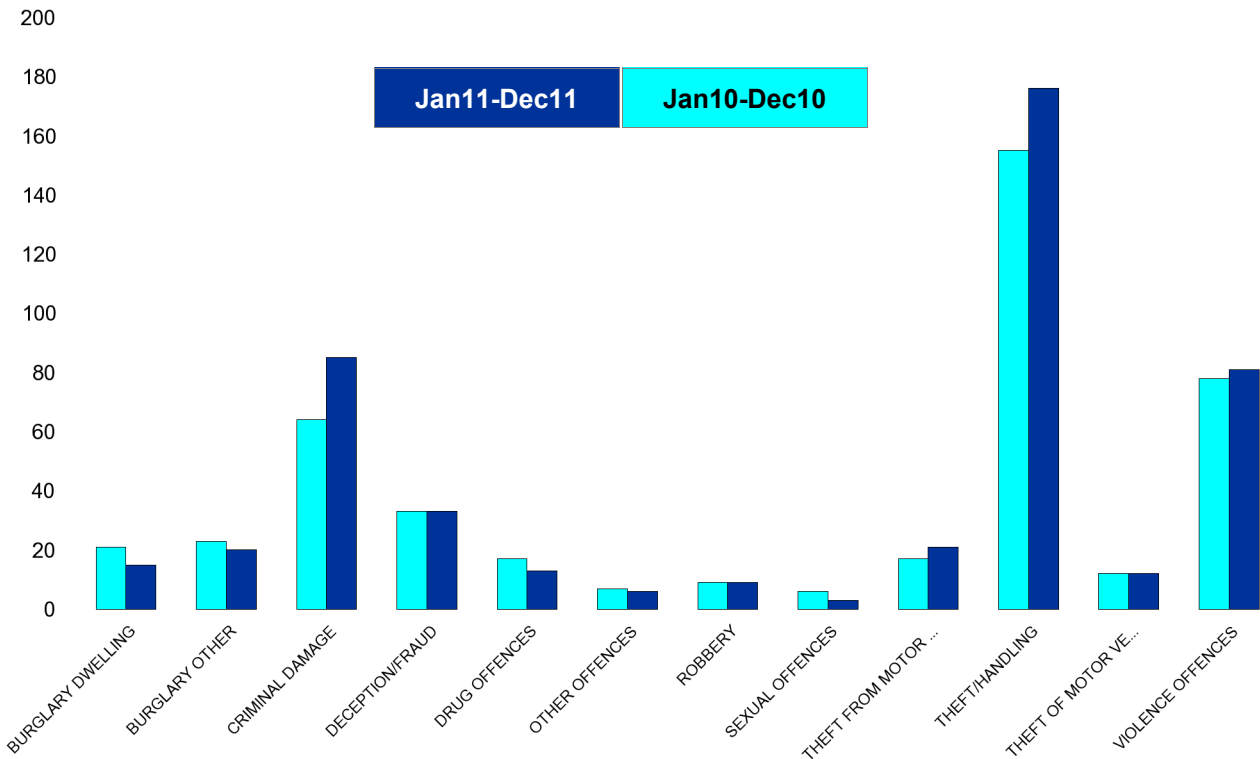


Kettering Town Forum Report

Northfield

HO Group	No of Crimes (Jan11-Dec11)	No of Crimes (Jan10-Dec10)	+/- Crime	% Change
BURGLARY DWELLING	15	21	-6	-29%
BURGLARY OTHER	20	23	-3	-13%
CRIMINAL DAMAGE	85	64	21	33%
DECEPTION/FRAUD	33	33	0	0%
DRUG OFFENCES	13	17	-4	-24%
OTHER OFFENCES	6	7	-1	-14%
ROBBERY	9	9	0	0%
SEXUAL OFFENCES	3	6	-3	-50%
THEFT FROM MOTOR VEHICLES	21	17	4	24%
THEFT/HANDLING	176	155	21	14%
THEFT OF MOTOR VEHICLES	12	12	0	0%
VIOLENCE OFFENCES	81	78	3	4%
Sum:	474	442	32	7%

No of Cleared Up Crimes	Detection Rate (Past 12 Months)
0	0%
0	0%
24	28%
4	12%
9	69%
5	83%
2	22%
0	0%
1	5%
81	46%
2	17%
35	43%
163	34%

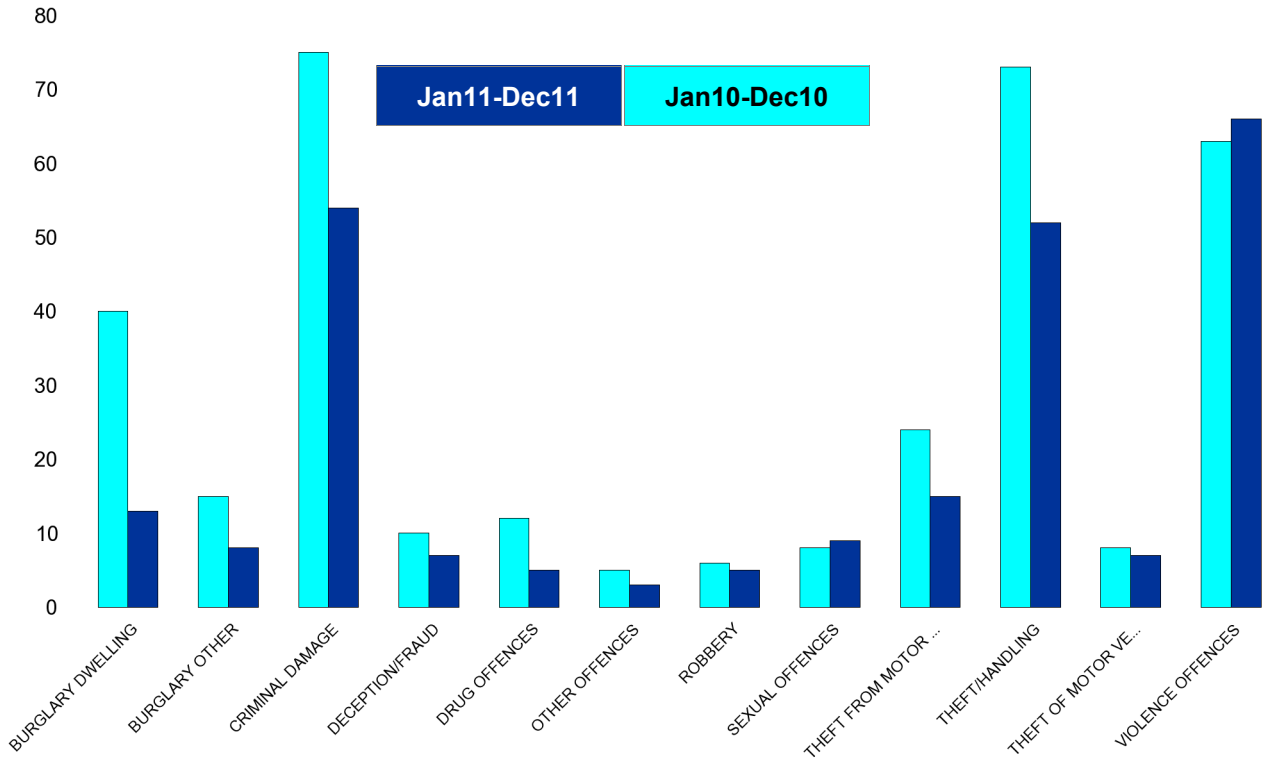


Kettering Town Forum Report

Pipers Hill

HO Group	No of Crimes (Jan11-Dec11)	No of Crimes (Jan10-Dec10)	+/- Crime	% Change
BURGLARY DWELLING	13	40	-27	-68%
BURGLARY OTHER	8	15	-7	-47%
CRIMINAL DAMAGE	54	75	-21	-28%
DECEPTION/FRAUD	7	10	-3	-30%
DRUG OFFENCES	5	12	-7	-58%
OTHER OFFENCES	3	5	-2	-40%
ROBBERY	5	6	-1	-17%
SEXUAL OFFENCES	9	8	1	13%
THEFT FROM MOTOR VEHICLES	15	24	-9	-38%
THEFT/HANDLING	52	73	-21	-29%
THEFT OF MOTOR VEHICLES	7	8	-1	-13%
VIOLENCE OFFENCES	66	63	3	5%
Sum:	244	339	-95	-28%

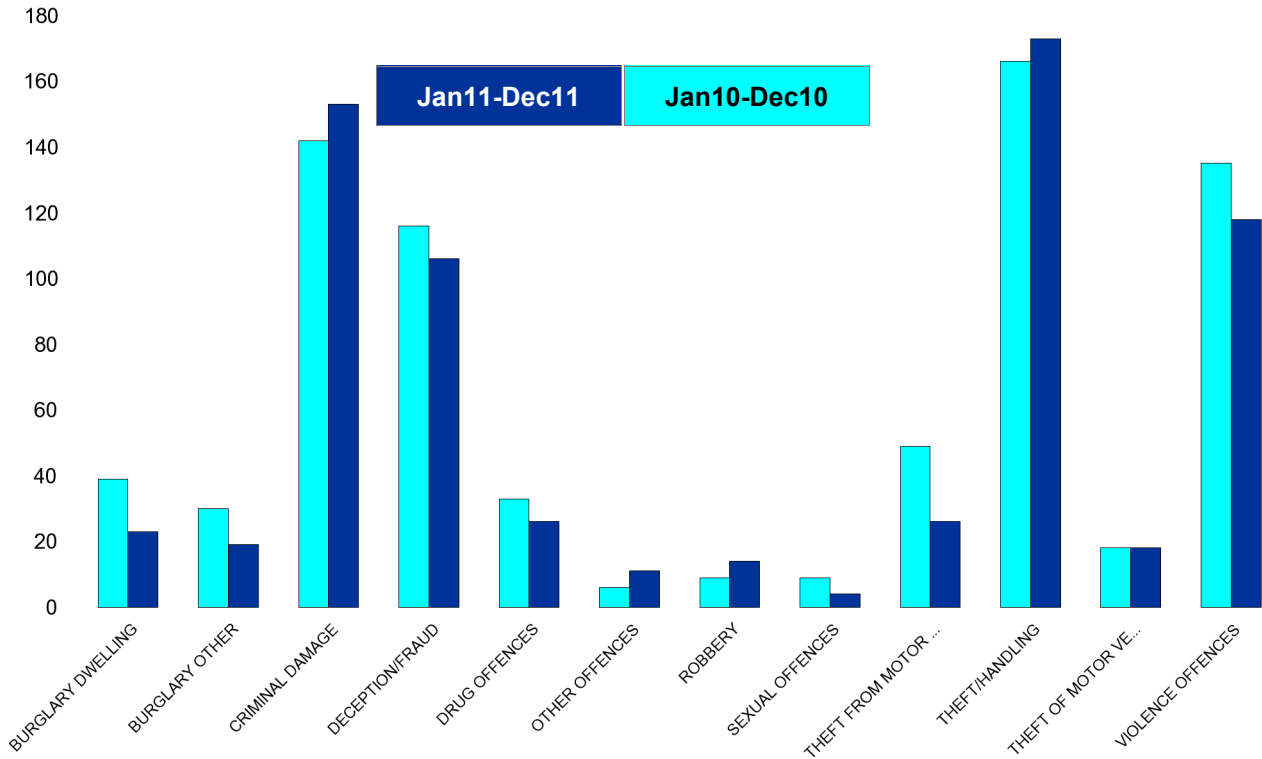
No of Cleared Up Crimes	Detection Rate (Past 12 Months)
9	69%
0	0%
12	22%
1	14%
5	100%
2	67%
0	0%
8	89%
1	7%
14	27%
3	43%
22	33%
77	32%



Kettering Town Forum Report

St Michaels and Wicksteed

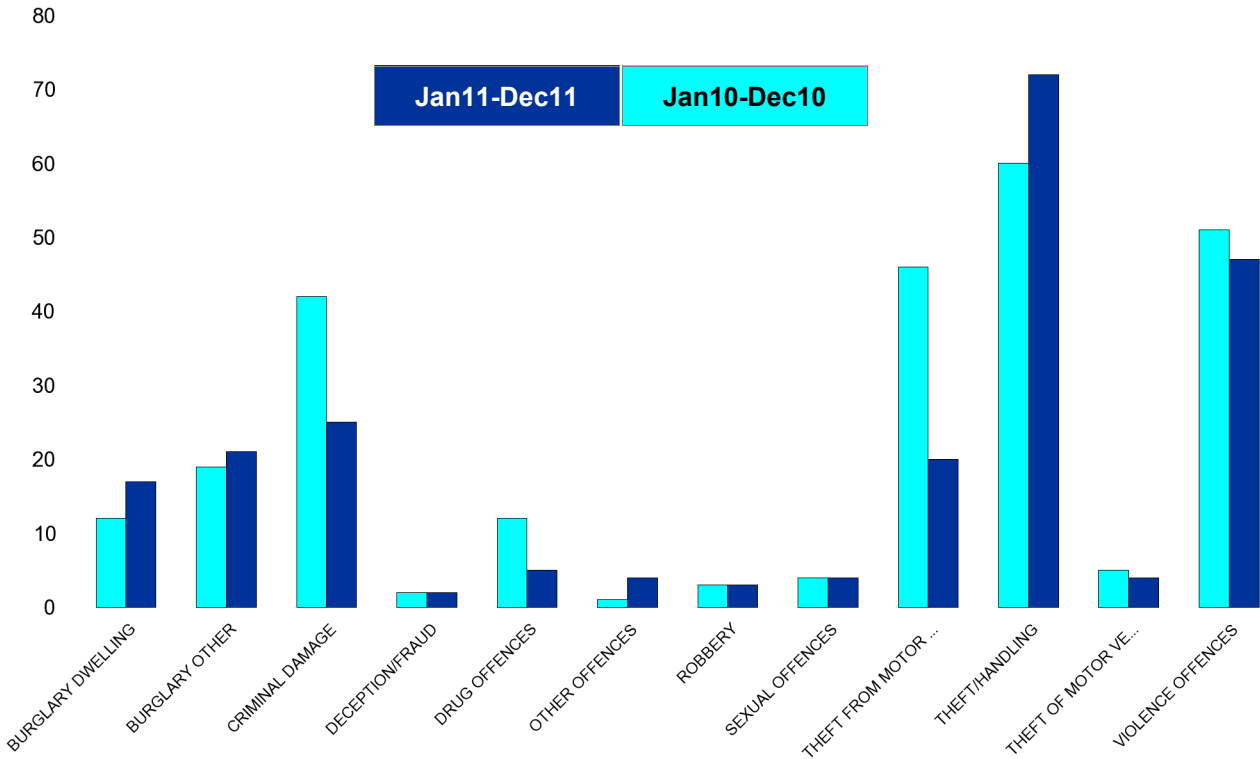
HO Group	No of Crimes (Jan11-Dec11)	No of Crimes (Jan10-Dec10)	+/- Crime	% Change	No of Cleared Up Crimes	Detection Rate (Past 12 Months)
BURGLARY DWELLING	23	39	-16	-41%	4	17%
BURGLARY OTHER	19	30	-11	-37%	0	0%
CRIMINAL DAMAGE	153	142	11	8%	30	20%
DECEPTION/FRAUD	106	116	-10	-9%	24	23%
DRUG OFFENCES	26	33	-7	-21%	26	100%
OTHER OFFENCES	11	6	5	83%	5	45%
ROBBERY	14	9	5	56%	6	43%
SEXUAL OFFENCES	4	9	-5	-56%	4	100%
THEFT FROM MOTOR VEHICLES	26	49	-23	-47%	0	0%
THEFT/HANDLING	173	166	7	4%	47	27%
THEFT OF MOTOR VEHICLES	18	18	0	0%	4	22%
VIOLENCE OFFENCES	118	135	-17	-13%	43	36%
Sum:	691	752	-61	-8%	193	28%



Kettering Town Forum Report

St Peters

HO Group	No of Crimes (Jan11-Dec11)	No of Crimes (Jan10-Dec10)	+/- Crime	% Change	No of Cleared Up Crimes	Detection Rate (Past 12 Months)
BURGLARY DWELLING	17	12	5	42%	0	0%
BURGLARY OTHER	21	19	2	11%	3	14%
CRIMINAL DAMAGE	25	42	-17	-40%	7	28%
DECEPTION/FRAUD	2	2	0	0%	0	0%
DRUG OFFENCES	5	12	-7	-58%	8	160%
OTHER OFFENCES	4	1	3	300%	1	25%
ROBBERY	3	3	0	0%	0	0%
SEXUAL OFFENCES	4	4	0	0%	1	25%
THEFT FROM MOTOR VEHICLES	20	46	-26	-57%	1	5%
THEFT/HANDLING	72	60	12	20%	11	15%
THEFT OF MOTOR VEHICLES	4	5	-1	-20%	0	0%
VIOLENCE OFFENCES	47	51	-4	-8%	19	40%
Sum:	224	257	-33	-13%	51	23%

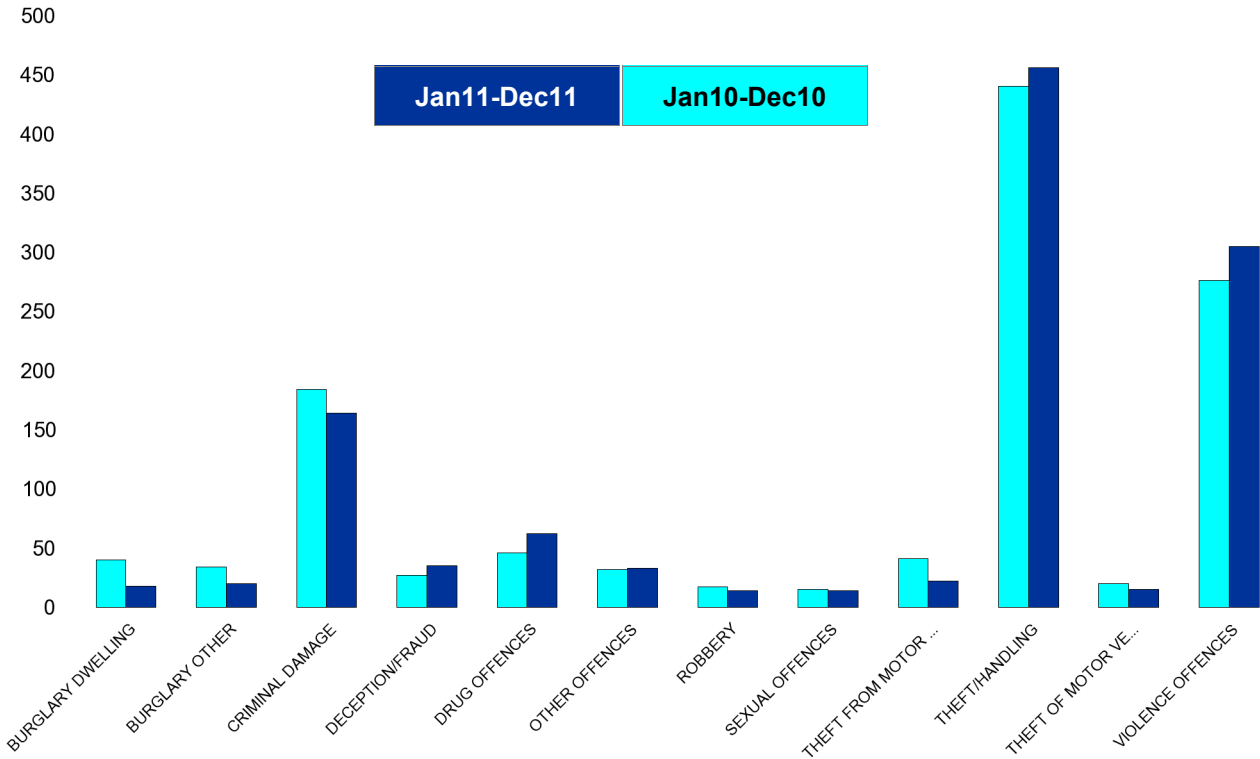


Kettering Town Forum Report

William Knibb

HO Group	No of Crimes (Jan11-Dec11)	No of Crimes (Jan10-Dec10)	+/- Crime	% Change
BURGLARY DWELLING	18	40	-22	-55%
BURGLARY OTHER	20	34	-14	-41%
CRIMINAL DAMAGE	164	184	-20	-11%
DECEPTION/FRAUD	35	27	8	30%
DRUG OFFENCES	62	46	16	35%
OTHER OFFENCES	33	32	1	3%
ROBBERY	14	17	-3	-18%
SEXUAL OFFENCES	14	15	-1	-7%
THEFT FROM MOTOR VEHICLES	22	41	-19	-46%
THEFT/HANDLING	456	440	16	4%
THEFT OF MOTOR VEHICLES	15	20	-5	-25%
VIOLENCE OFFENCES	305	276	29	11%
Sum:	1158	1172	-14	-1%

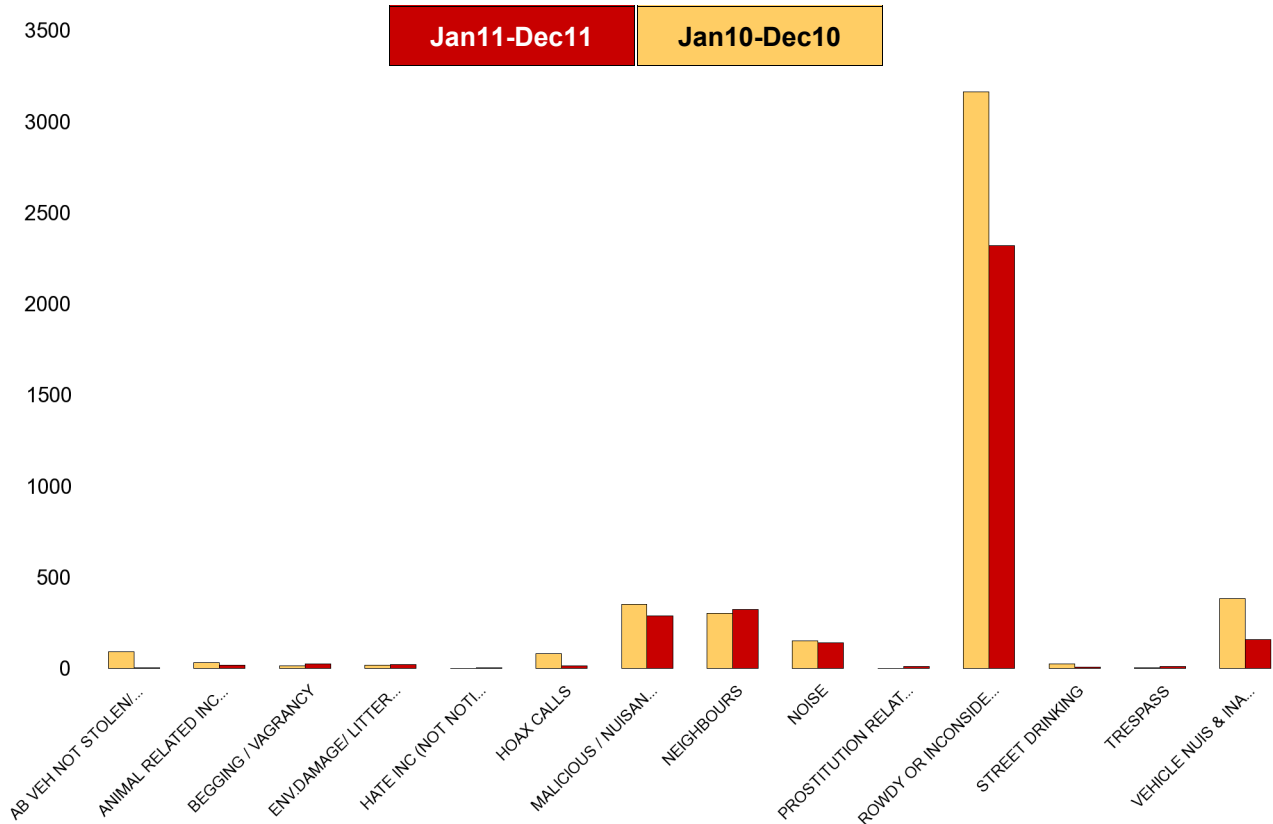
No of Cleared Up Crimes	Detection Rate (Past 12 Months)
4	22%
3	15%
49	30%
23	66%
55	89%
21	64%
3	21%
9	64%
1	5%
174	38%
9	60%
146	48%
497	43%



Kettering Town Forum Report

Kettering Town SCT - ASB

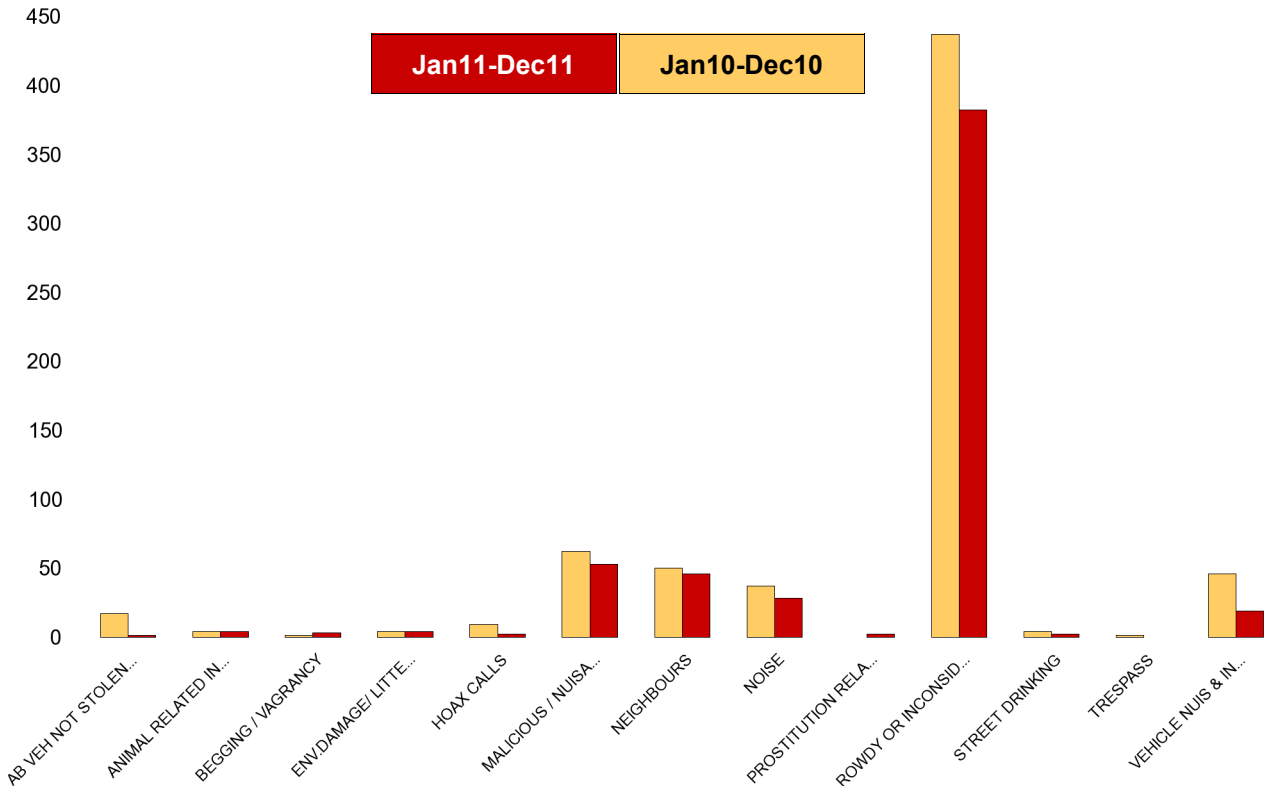
NSIR Closing Cat. 1 Desc	No of Incidents (Jan11-Dec11)	No of Incidents (Jan10-Dec10)	+/- Incidents	% Change Incidents
AB VEH NOT STOLEN/OBSTRUCT	7	93	-86	-92%
ANIMAL RELATED INC ANTI-SOCIAL	21	33	-12	-36%
BEGGING / VAGRANCY	28	17	11	65%
ENV.DAMAGE/ LITTER/ NEEDLES	23	21	2	10%
FIREWORK RELATED INCIDENTS	0	12	-12	-100%
HATE INC (NOT NOTIFIABLE CRIME	6	1	5	500%
HOAX CALLS	16	84	-68	-81%
MALICIOUS / NUISANCE COMMS	290	354	-64	-18%
NEIGHBOURS	324	303	21	7%
NOISE	144	153	-9	-6%
PROSTITUTION RELATED ACTIVITY	13	1	12	1200%
ROWDY OR INCONSIDERATE BEHAV	2321	3165	-844	-27%
STREET DRINKING	8	25	-17	-68%
TRESPASS	13	4	9	225%
VEHICLE NUIS & INAPPROP VEH US	160	386	-226	-59%
Sum:	3374	4652	-1,278	-27%



Kettering Town Forum Report

All Saints

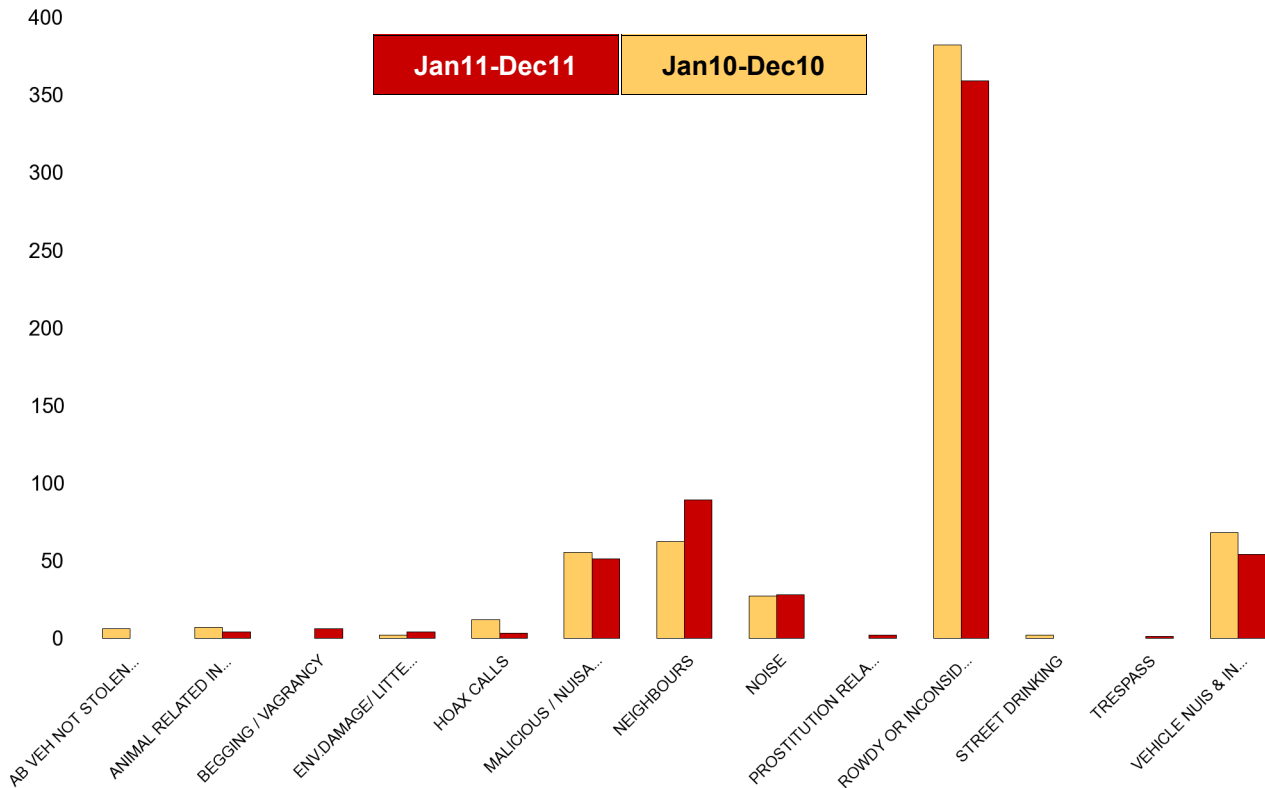
NSIR Closing Cat. 1 Desc	No of Incidents (Jan11-Dec11)	No of Incidents (Jan10-Dec10)	+/- Incidents	% Change Incidents
AB VEH NOT STOLEN/OBSTRUCT	1	17	-16	-94%
ANIMAL RELATED INC ANTI-SOCIAL	4	4	0	0%
BEGGING / VAGRANCY	3	1	2	200%
ENV.DAMAGE/ LITTER/ NEEDLES	4	4	0	0%
FIREWORK RELATED INCIDENTS	0	2	-2	-100%
HOAX CALLS	2	9	-7	-78%
MALICIOUS / NUISANCE COMMS	53	62	-9	-15%
NEIGHBOURS	46	50	-4	-8%
NOISE	28	37	-9	-24%
PROSTITUTION RELATED ACTIVITY	2	0	2	0%
ROWDY OR INCONSIDERATE BEHAV	382	437	-55	-13%
STREET DRINKING	2	4	-2	-50%
TRESPASS	0	1	-1	-100%
VEHICLE NUIS & INAPPROP VEH US	19	46	-27	-59%
Sum:	546	674	-128	-19%



Kettering Town Forum Report

Avondale Grange

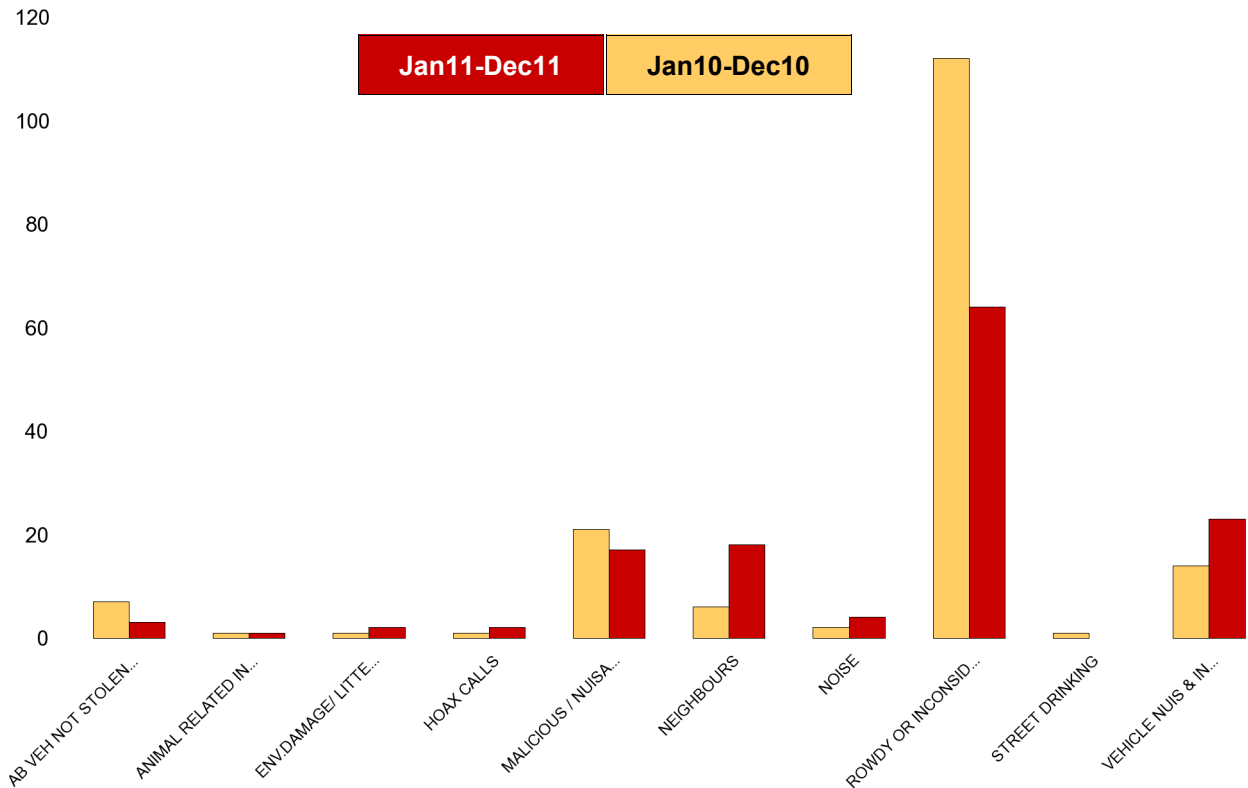
NSIR Closing Cat. 1 Desc	No of Incidents (Jan11-Dec11)	No of Incidents (Jan10-Dec10)	+/- Incidents	% Change Incidents
AB VEH NOT STOLEN/OBSTRUCT	0	6	-6	-100%
ANIMAL RELATED INC ANTI-SOCIAL	4	7	-3	-43%
BEGGING / VAGRANCY	6	0	6	0%
ENV.DAMAGE/ LITTER/ NEEDLES	4	2	2	100%
HOAX CALLS	3	12	-9	-75%
MALICIOUS / NUISANCE COMMS	51	55	-4	-7%
NEIGHBOURS	89	62	27	44%
NOISE	28	27	1	4%
PROSTITUTION RELATED ACTIVITY	2	0	2	0%
ROWDY OR INCONSIDERATE BEHAV	359	382	-23	-6%
STREET DRINKING	0	2	-2	-100%
TRESPASS	1	0	1	0%
VEHICLE NUIS & INAPPROP VEH US	54	68	-14	-21%
Sum:	601	623	-22	-4%



Kettering Town Forum Report

Brambleside

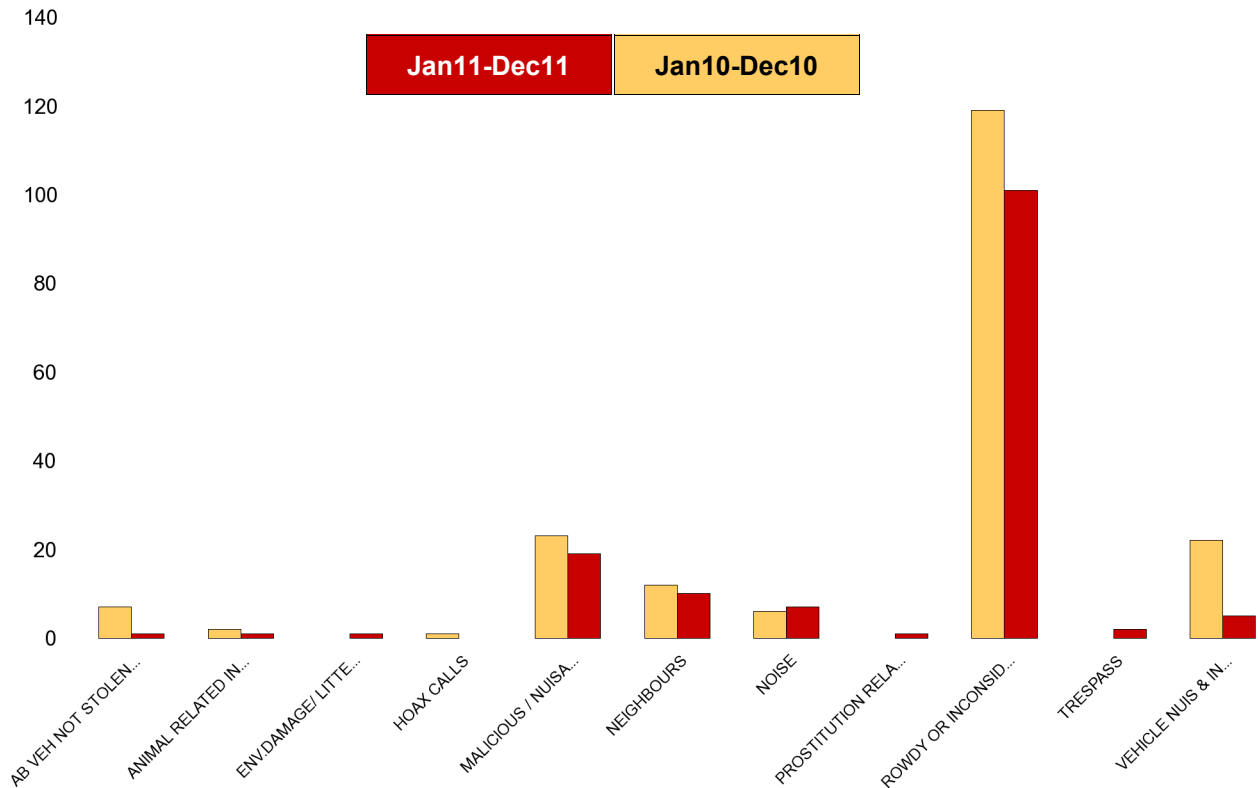
NSIR Closing Cat. 1 Desc	No of Incidents (Jan11-Dec11)	No of Incidents (Jan10-Dec10)	+/- Incidents	% Change Incidents
AB VEH NOT STOLEN/OBSTRUCT	3	7	-4	-57%
ANIMAL RELATED INC ANTI-SOCIAL	1	1	0	0%
ENV.DAMAGE/ LITTER/ NEEDLES	2	1	1	100%
FIREWORK RELATED INCIDENTS	0	2	-2	-100%
HOAX CALLS	2	1	1	100%
MALICIOUS / NUISANCE COMMS	17	21	-4	-19%
NEIGHBOURS	18	6	12	200%
NOISE	4	2	2	100%
ROWDY OR INCONSIDERATE BEHAV	64	112	-48	-43%
STREET DRINKING	0	1	-1	-100%
VEHICLE NUIS & INAPPROP VEH US	23	14	9	64%
Sum:	134	168	-34	-20%



Kettering Town Forum Report

Ise Lodge

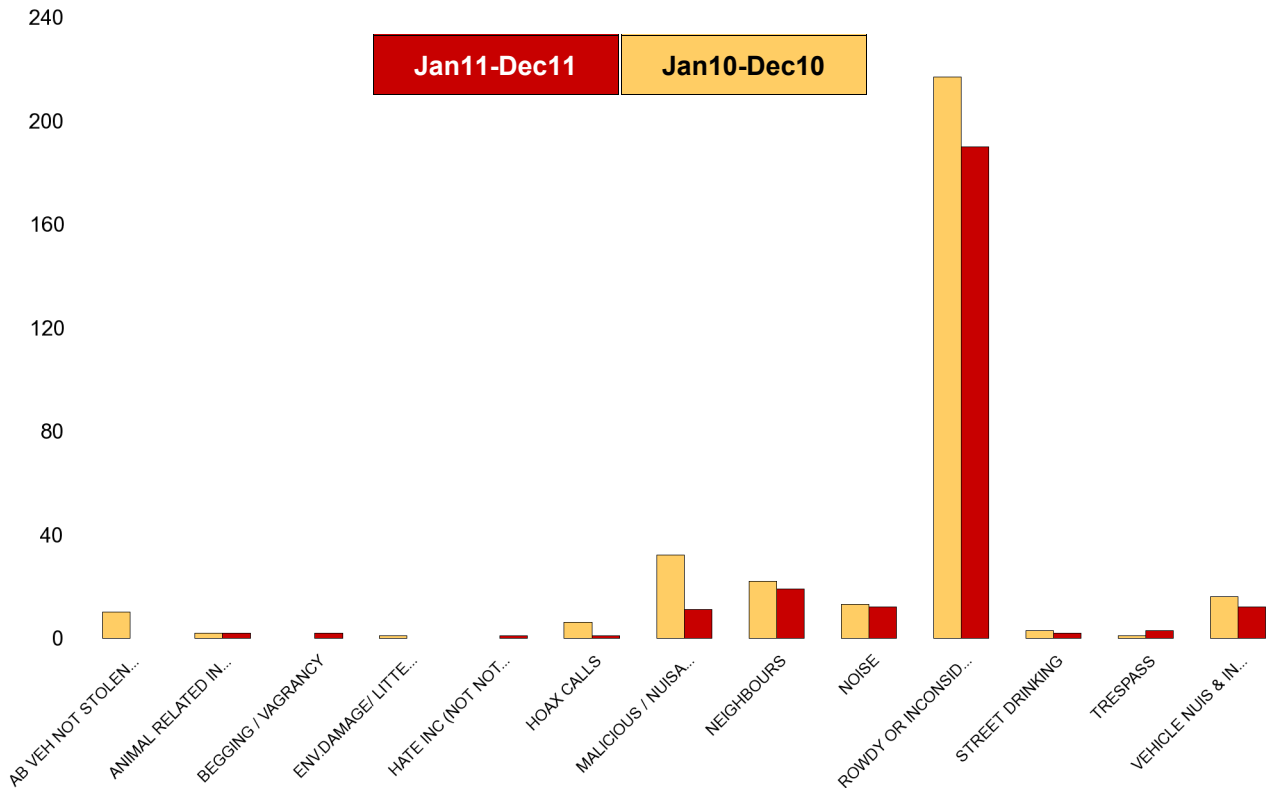
NSIR Closing Cat. 1 Desc	No of Incidents (Jan11-Dec11)	No of Incidents (Jan10-Dec10)	+/- Incidents	% Change Incidents
AB VEH NOT STOLEN/OBSTRUCT	1	7	-6	-86%
ANIMAL RELATED INC ANTI-SOCIAL	1	2	-1	-50%
ENV.DAMAGE/ LITTER/ NEEDLES	1	0	1	0%
FIREWORK RELATED INCIDENTS	0	1	-1	-100%
HOAX CALLS	0	1	-1	-100%
MALICIOUS / NUISANCE COMMS	19	23	-4	-17%
NEIGHBOURS	10	12	-2	-17%
NOISE	7	6	1	17%
PROSTITUTION RELATED ACTIVITY	1	0	1	0%
ROWDY OR INCONSIDERATE BEHAV	101	119	-18	-15%
TRESPASS	2	0	2	0%
VEHICLE NUIS & INAPPROP VEH US	5	22	-17	-77%
Sum:	148	193	-45	-23%



Kettering Town Forum Report

Northfield

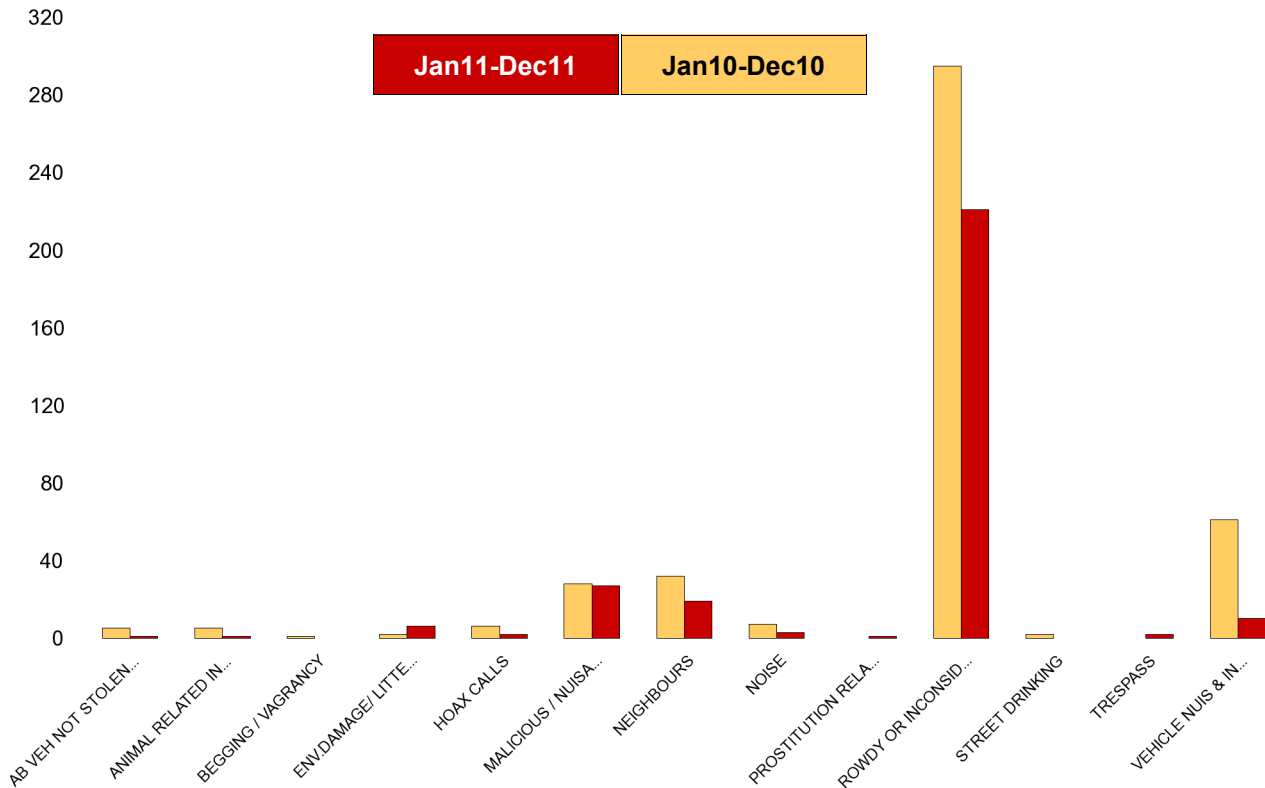
NSIR Closing Cat. 1 Desc	No of Incidents (Jan11-Dec11)	No of Incidents (Jan10-Dec10)	+/- Incidents	% Change Incidents
AB VEH NOT STOLEN/OBSTRUCT	0	10	-10	-100%
ANIMAL RELATED INC ANTI-SOCIAL	2	2	0	0%
BEGGING / VAGRANCY	2	0	2	0%
ENV.DAMAGE/ LITTER/ NEEDLES	0	1	-1	-100%
FIREWORK RELATED INCIDENTS	0	2	-2	-100%
HATE INC (NOT NOTIFIABLE CRIME	1	0	1	0%
HOAX CALLS	1	6	-5	-83%
MALICIOUS / NUISANCE COMMS	11	32	-21	-66%
NEIGHBOURS	19	22	-3	-14%
NOISE	12	13	-1	-8%
ROWDY OR INCONSIDERATE BEHAV	190	217	-27	-12%
STREET DRINKING	2	3	-1	-33%
TRESPASS	3	1	2	200%
VEHICLE NUIS & INAPPROP VEH US	12	16	-4	-25%
Sum:	255	325	-70	-22%



Kettering Town Forum Report

Pipers Hill

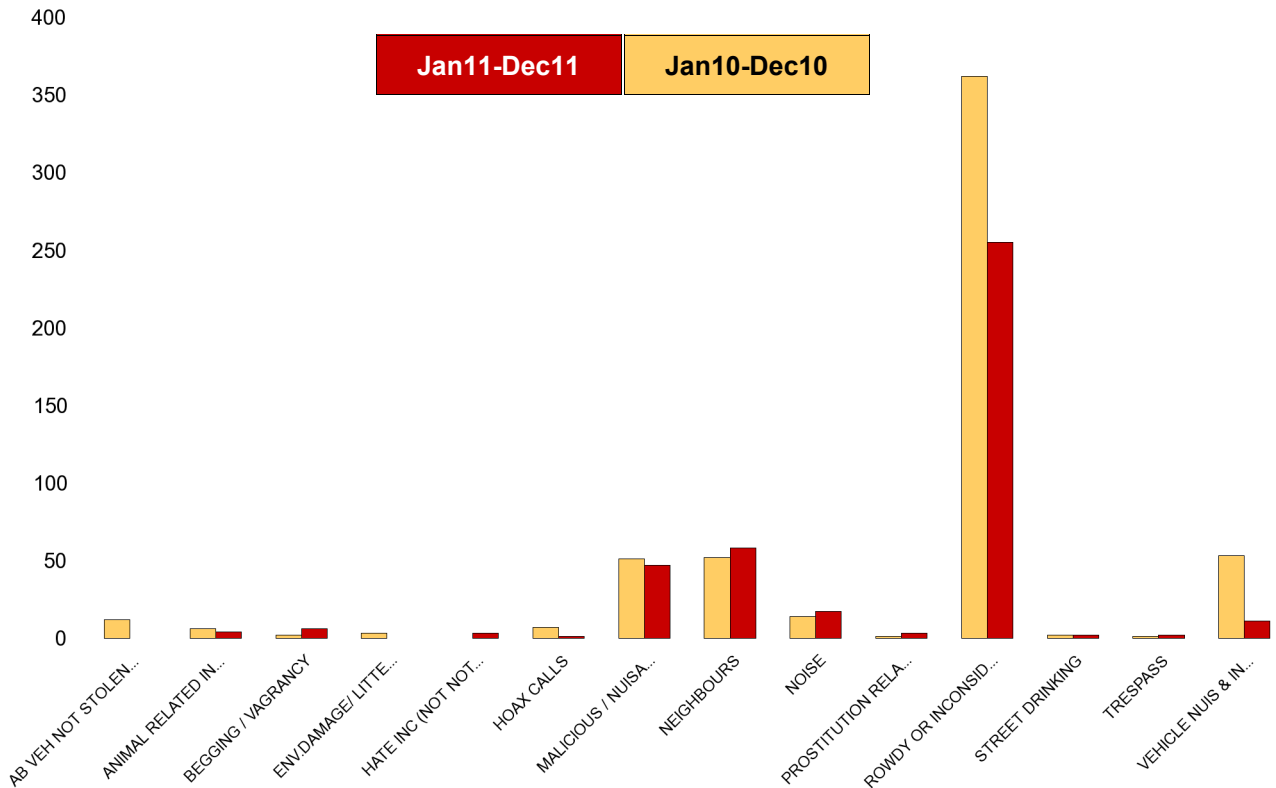
NSIR Closing Cat. 1 Desc	No of Incidents (Jan11-Dec11)	No of Incidents (Jan10-Dec10)	+/- Incidents	% Change Incidents
AB VEH NOT STOLEN/OBSTRUCT	1	5	-4	-80%
ANIMAL RELATED INC ANTI-SOCIAL	1	5	-4	-80%
BEGGING / VAGRANCY	0	1	-1	-100%
ENV.DAMAGE/ LITTER/ NEEDLES	6	2	4	200%
HOAX CALLS	2	6	-4	-67%
MALICIOUS / NUISANCE COMMS	27	28	-1	-4%
NEIGHBOURS	19	32	-13	-41%
NOISE	3	7	-4	-57%
PROSTITUTION RELATED ACTIVITY	1	0	1	0%
ROWDY OR INCONSIDERATE BEHAV	221	295	-74	-25%
STREET DRINKING	0	2	-2	-100%
TRESPASS	2	0	2	0%
VEHICLE NUIS & INAPPROP VEH US	10	61	-51	-84%
Sum:	293	444	-151	-34%



Kettering Town Forum Report

St Michaels and Wicksteed

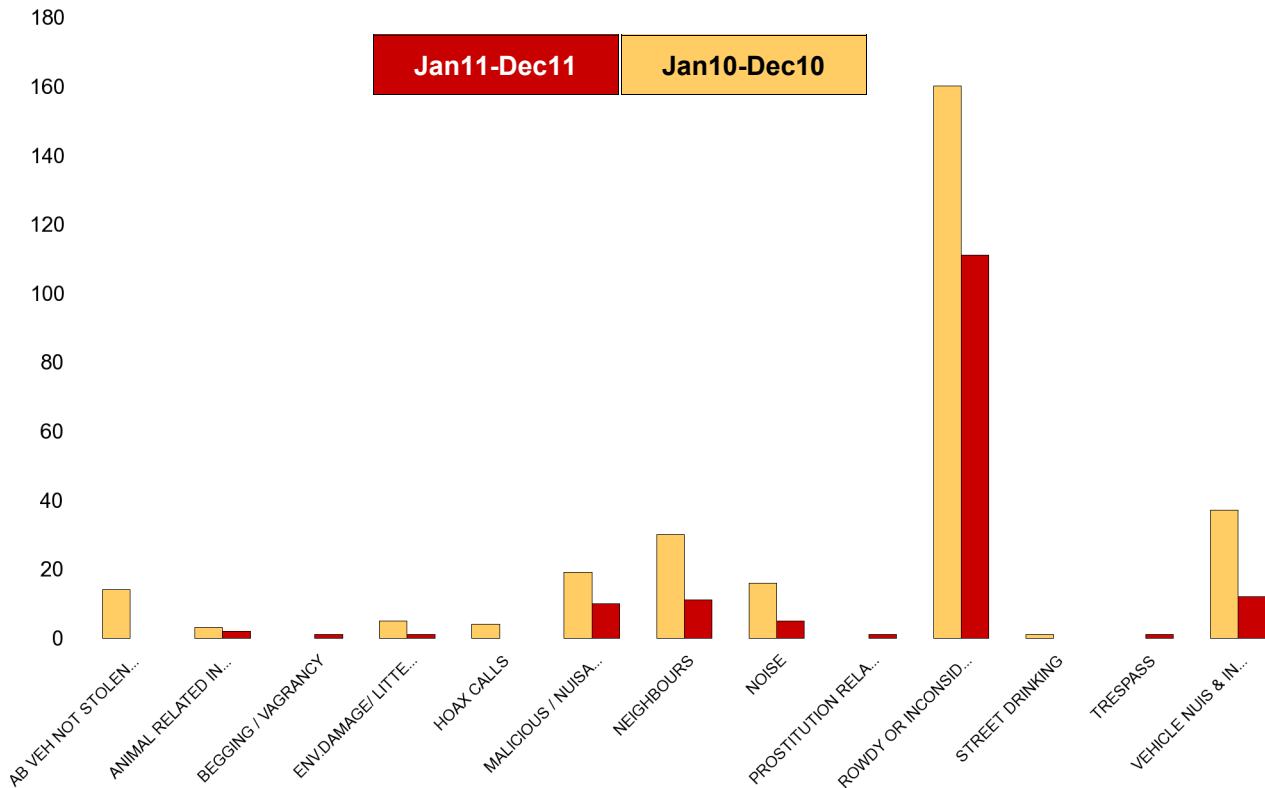
NSIR Closing Cat. 1 Desc	No of Incidents (Jan11-Dec11)	No of Incidents (Jan10-Dec10)	+/- Incidents	% Change Incidents
AB VEH NOT STOLEN/OBSTRUCT	0	12	-12	-100%
ANIMAL RELATED INC ANTI-SOCIAL	4	6	-2	-33%
BEGGING / VAGRANCY	6	2	4	200%
ENV.DAMAGE/ LITTER/ NEEDLES	0	3	-3	-100%
FIREWORK RELATED INCIDENTS	0	3	-3	-100%
HATE INC (NOT NOTIFIABLE CRIME	3	0	3	0%
HOAX CALLS	1	7	-6	-86%
MALICIOUS / NUISANCE COMMS	47	51	-4	-8%
NEIGHBOURS	58	52	6	12%
NOISE	17	14	3	21%
PROSTITUTION RELATED ACTIVITY	3	1	2	200%
ROWDY OR INCONSIDERATE BEHAV	255	362	-107	-30%
STREET DRINKING	2	2	0	0%
TRESPASS	2	1	1	100%
VEHICLE NUIS & INAPPROP VEH US	11	53	-42	-79%
Sum:	409	569	-160	-28%



Kettering Town Forum Report

St Peters

NSIR Closing Cat. 1 Desc	No of Incidents (Jan11-Dec11)	No of Incidents (Jan10-Dec10)	+/- Incidents	% Change Incidents
AB VEH NOT STOLEN/OBSTRUCT	0	14	-14	-100%
ANIMAL RELATED INC ANTI-SOCIAL	2	3	-1	-33%
BEGGING / VAGRANCY	1	0	1	0%
ENV.DAMAGE/ LITTER/ NEEDLES	1	5	-4	-80%
HOAX CALLS	0	4	-4	-100%
MALICIOUS / NUISANCE COMMS	10	19	-9	-47%
NEIGHBOURS	11	30	-19	-63%
NOISE	5	16	-11	-69%
PROSTITUTION RELATED ACTIVITY	1	0	1	0%
ROWDY OR INCONSIDERATE BEHAV	111	160	-49	-31%
STREET DRINKING	0	1	-1	-100%
TRESPASS	1	0	1	0%
VEHICLE NUIS & INAPPROP VEH US	12	37	-25	-68%
Sum:	155	289	-134	-46%



Kettering Town Forum Report

William Knibb

NSIR Closing Cat. 1 Desc	No of Incidents (Jan11-Dec11)	No of Incidents (Jan10-Dec10)	+/- Incidents	% Change Incidents
AB VEH NOT STOLEN/OBSTRUCT	1	15	-14	-93%
ANIMAL RELATED INC ANTI-SOCIAL	2	3	-1	-33%
BEGGING / VAGRANCY	10	13	-3	-23%
ENV.DAMAGE/ LITTER/ NEEDLES	5	3	2	67%
FIREWORK RELATED INCIDENTS	0	2	-2	-100%
HATE INC (NOT NOTIFIABLE CRIME)	2	1	1	100%
HOAX CALLS	5	38	-33	-87%
MALICIOUS / NUISANCE COMMS	55	63	-8	-13%
NEIGHBOURS	54	37	17	46%
NOISE	40	31	9	29%
PROSTITUTION RELATED ACTIVITY	3	0	3	0%
ROWDY OR INCONSIDERATE BEHAV	638	1081	-443	-41%
STREET DRINKING	2	10	-8	-80%
TRESPASS	2	1	1	100%
VEHICLE NUIS & INAPPROP VEH US	14	69	-55	-80%
Sum:	833	1367	-534	-39%

