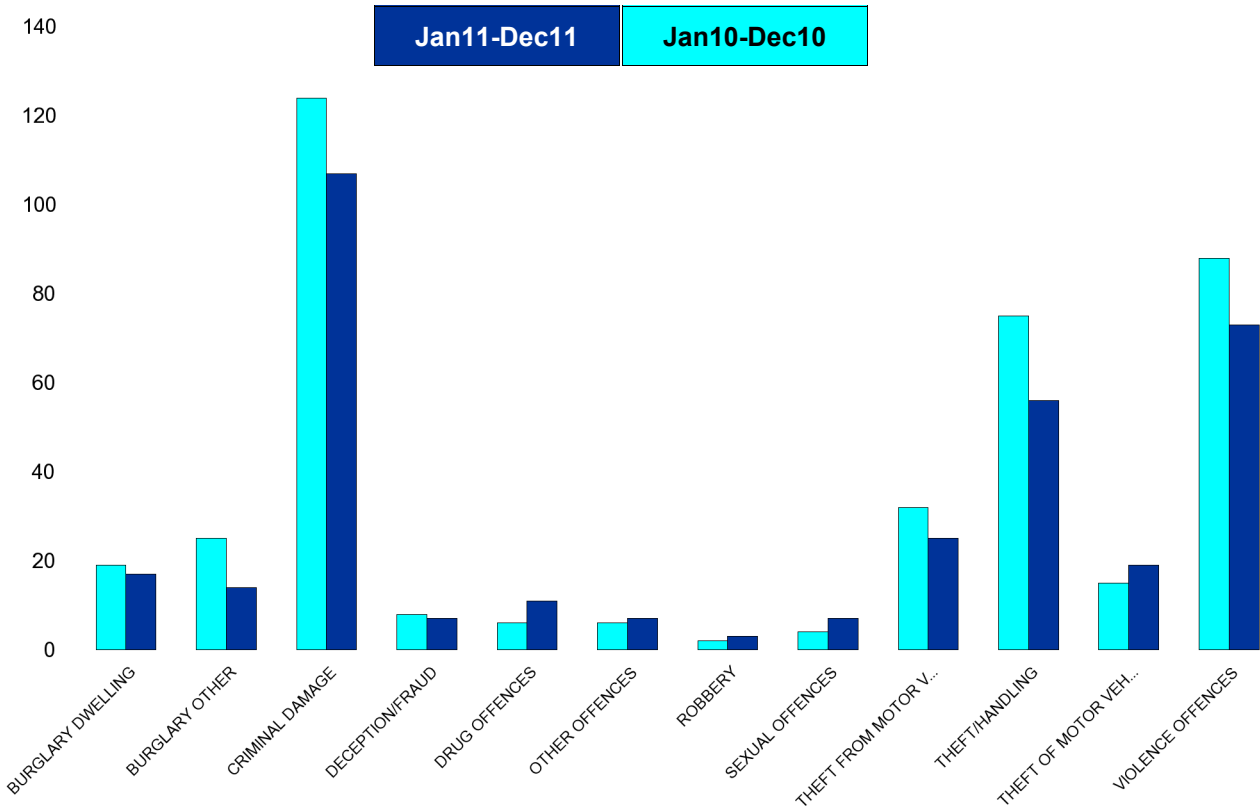


## A6 Towns Forum Report

### K006 & K007 Desborough - Crime

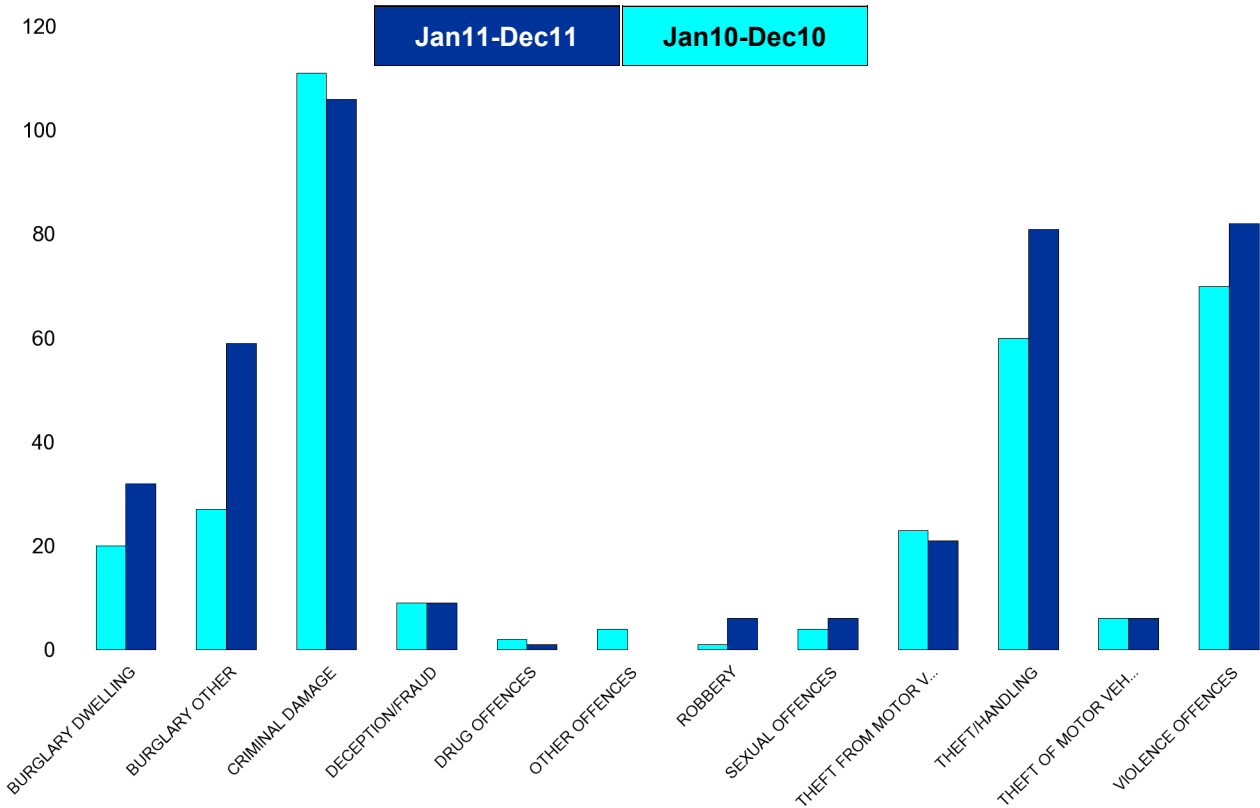
HO Group	No of Crimes (Jan11-Dec11)	No of Crimes (Jan10-Dec10)	+/- Crime	% Change	No of Cleared Up Crimes	Detection Rate (Past 12 Months)
BURGLARY DWELLING	17	19	-2	-11%	0	0%
BURGLARY OTHER	14	25	-11	-44%	2	14%
CRIMINAL DAMAGE	107	124	-17	-14%	20	19%
DECEPTION/FRAUD	7	8	-1	-13%	0	0%
DRUG OFFENCES	11	6	5	83%	7	64%
OTHER OFFENCES	7	6	1	17%	7	100%
ROBBERY	3	2	1	50%	1	33%
SEXUAL OFFENCES	7	4	3	75%	2	29%
THEFT FROM MOTOR VEHICLES	25	32	-7	-22%	0	0%
THEFT/HANDLING	56	75	-19	-25%	7	13%
THEFT OF MOTOR VEHICLES	19	15	4	27%	3	16%
VIOLENCE OFFENCES	73	88	-15	-17%	34	47%
<b>Sum:</b>	<b>346</b>	<b>404</b>	<b>-58</b>	<b>-14%</b>	<b>83</b>	<b>24%</b>



## A6 Towns Forum Report

### K012 Rothwell - Crime

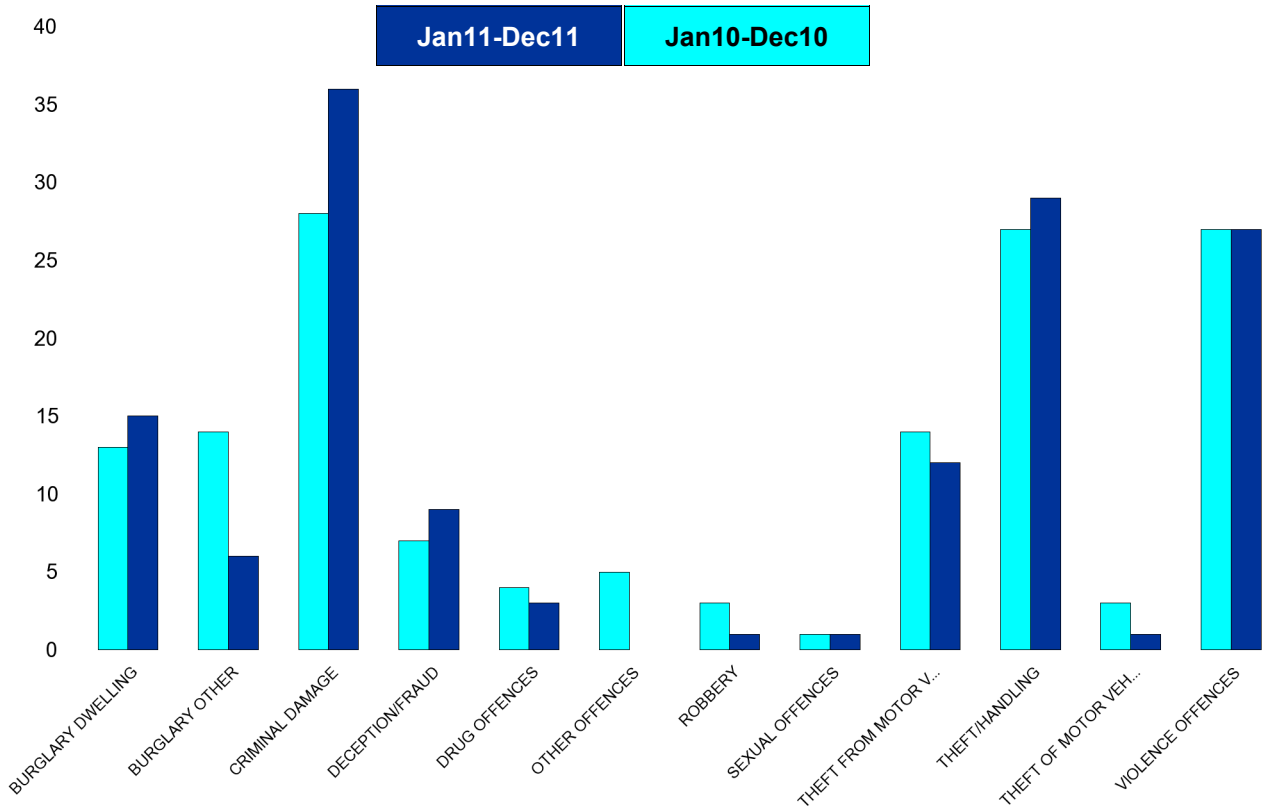
HO Group	No of Crimes (Jan11-Dec11)	No of Crimes (Jan10-Dec10)	+/- Crime	% Change	No of Cleared Up Crimes	Detection Rate (Past 12 Months)
BURGLARY DWELLING	32	20	12	60%	9	28%
BURGLARY OTHER	59	27	32	119%	7	12%
CRIMINAL DAMAGE	106	111	-5	-5%	12	11%
DECEPTION/FRAUD	9	9	0	0%	2	22%
DRUG OFFENCES	1	2	-1	-50%	1	100%
OTHER OFFENCES	0	4	-4	-100%	0	0%
ROBBERY	6	1	5	500%	0	0%
SEXUAL OFFENCES	6	4	2	50%	2	33%
THEFT FROM MOTOR VEHICLES	21	23	-2	-9%	2	10%
THEFT/HANDLING	81	60	21	35%	18	22%
THEFT OF MOTOR VEHICLES	6	6	0	0%	1	17%
VIOLENCE OFFENCES	82	70	12	17%	31	38%
<b>Sum:</b>	<b>409</b>	<b>337</b>	<b>72</b>	<b>21%</b>	<b>85</b>	<b>21%</b>



## A6 Towns Forum Report

### K003 Barton - Crime

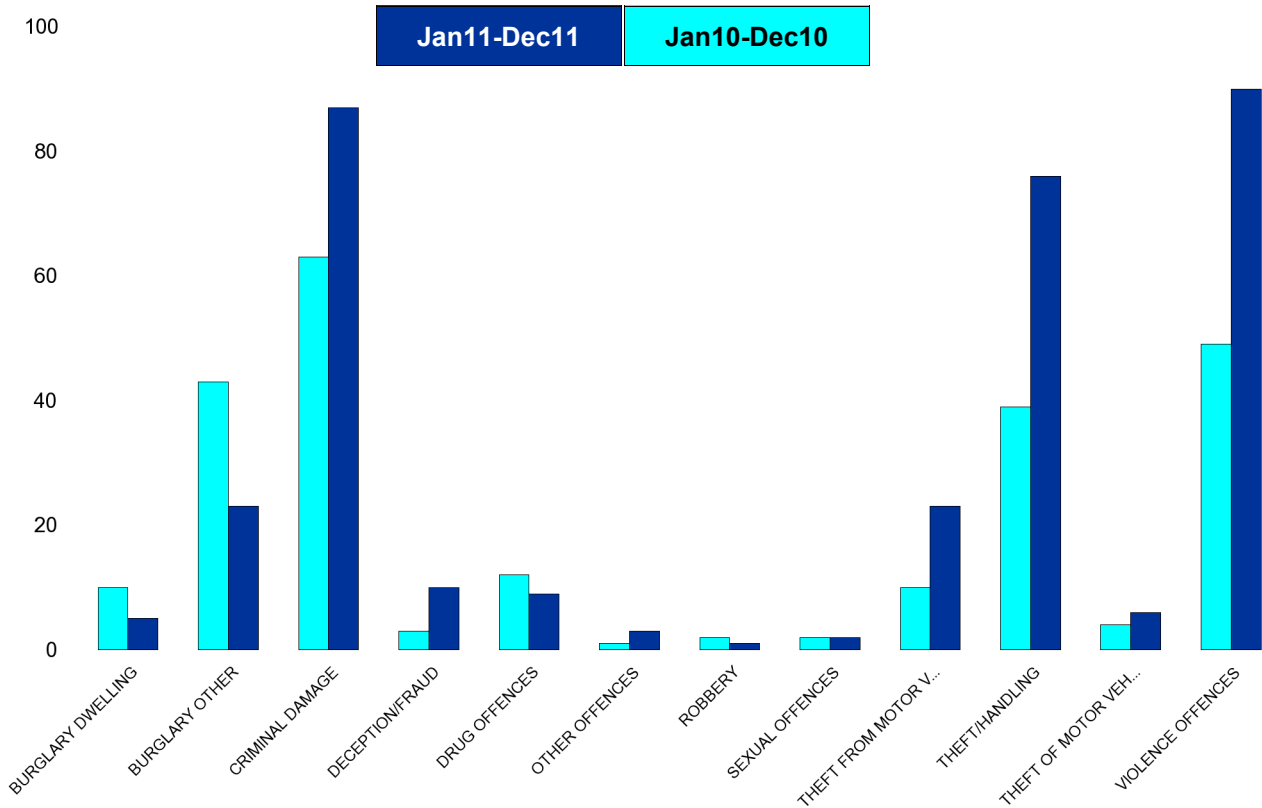
HO Group	No of Crimes (Jan11-Dec11)	No of Crimes (Jan10-Dec10)	+/- Crime	% Change	No of Cleared Up Crimes	Detection Rate (Past 12 Months)
BURGLARY DWELLING	15	13	2	15%	3	20%
BURGLARY OTHER	6	14	-8	-57%	1	17%
CRIMINAL DAMAGE	36	28	8	29%	3	8%
DECEPTION/FRAUD	9	7	2	29%	3	33%
DRUG OFFENCES	3	4	-1	-25%	4	133%
OTHER OFFENCES	0	5	-5	-100%	0	0%
ROBBERY	1	3	-2	-67%	1	100%
SEXUAL OFFENCES	1	1	0	0%	0	0%
THEFT FROM MOTOR VEHICLES	12	14	-2	-14%	9	75%
THEFT/HANDLING	29	27	2	7%	7	24%
THEFT OF MOTOR VEHICLES	1	3	-2	-67%	0	0%
VIOLENCE OFFENCES	27	27	0	0%	17	63%
<b>Sum:</b>	<b>140</b>	<b>146</b>	<b>-6</b>	<b>-4%</b>	<b>48</b>	<b>34%</b>



## A6 Towns Forum Report

### K005 Burton Latimer - Crime

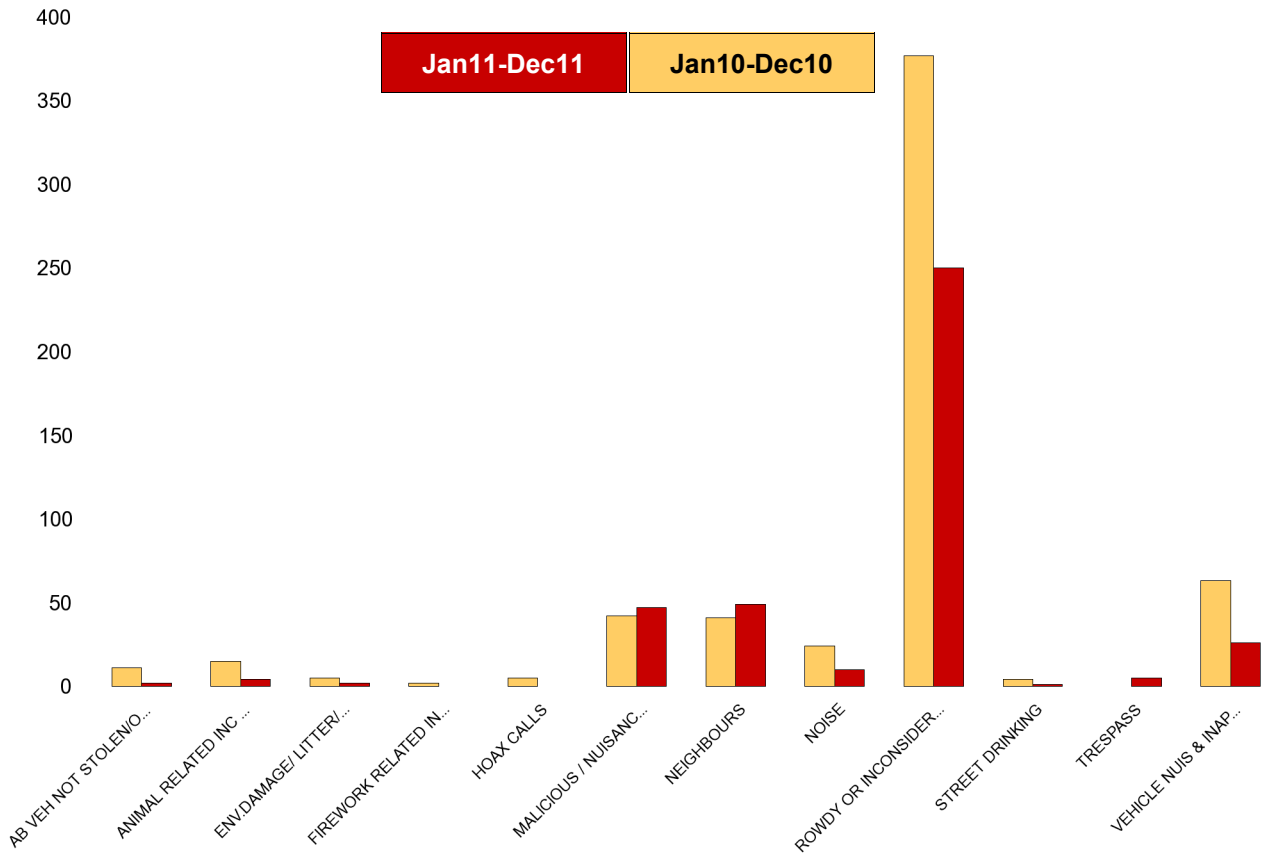
HO Group	No of Crimes (Jan11-Dec11)	No of Crimes (Jan10-Dec10)	+/- Crime	% Change	No of Cleared Up Crimes	Detection Rate (Past 12 Months)
BURGLARY DWELLING	5	10	-5	-50%	0	0%
BURGLARY OTHER	23	43	-20	-47%	6	26%
CRIMINAL DAMAGE	87	63	24	38%	19	22%
DECEPTION/FRAUD	10	3	7	233%	2	20%
DRUG OFFENCES	9	12	-3	-25%	5	56%
OTHER OFFENCES	3	1	2	200%	2	67%
ROBBERY	1	2	-1	-50%	1	100%
SEXUAL OFFENCES	2	2	0	0%	1	50%
THEFT FROM MOTOR VEHICLES	23	10	13	130%	2	9%
THEFT/HANDLING	76	39	37	95%	9	12%
THEFT OF MOTOR VEHICLES	6	4	2	50%	4	67%
VIOLENCE OFFENCES	90	49	41	84%	39	43%
<b>Sum:</b>	<b>335</b>	<b>238</b>	<b>97</b>	<b>41%</b>	<b>90</b>	<b>27%</b>



## A6 Towns Forum Report

### K006 & K007 Desborough ASB

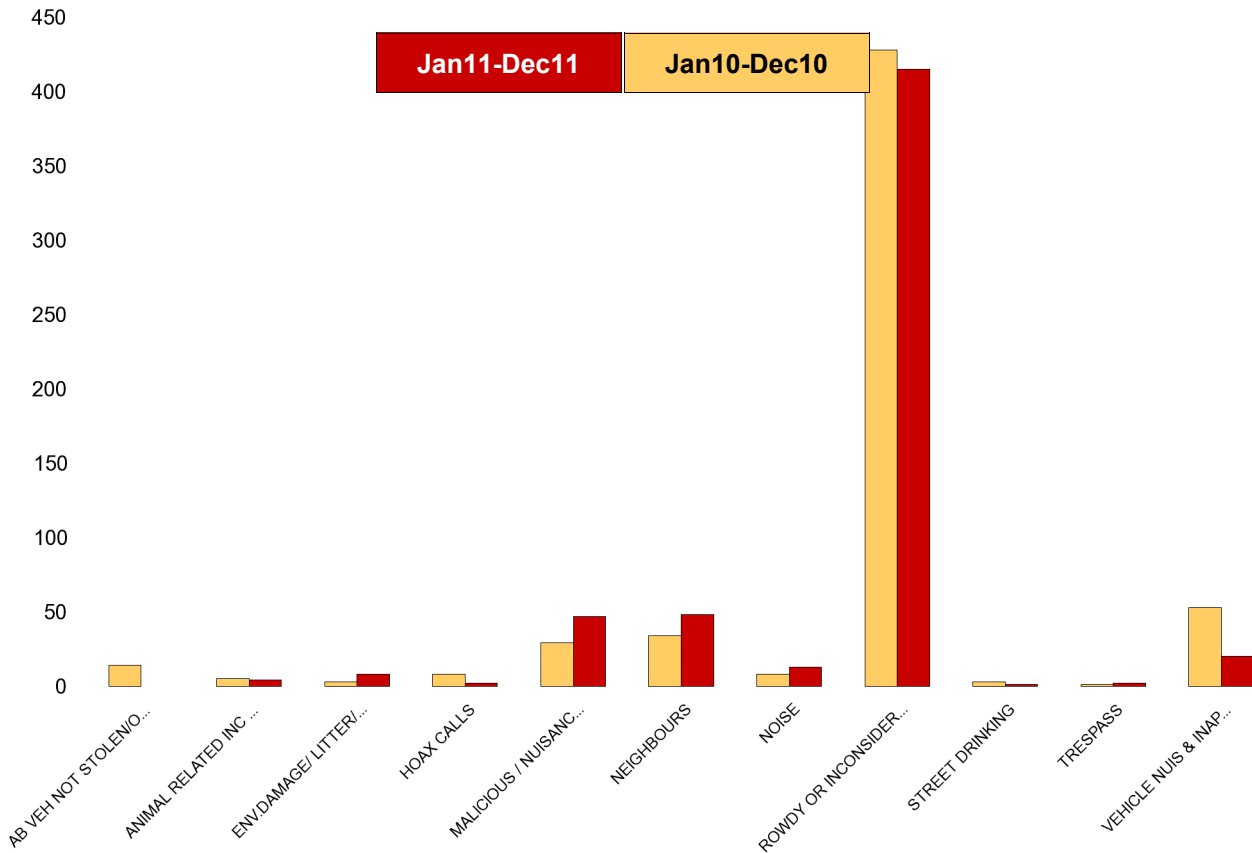
NSIR Closing Cat. 1 Desc	No of Incidents (Jan11-Dec11)	No of Incidents (Jan10-Dec10)	+/- Incidents	% Change Incidents
AB VEH NOT STOLEN/OBSTRUCT	2	11	-9	-82%
ANIMAL RELATED INC ANTI-SOCIAL	4	15	-11	-73%
ENV.DAMAGE/ LITTER/ NEEDLES	2	5	-3	-60%
FIREWORK RELATED INCIDENTS	0	2	-2	-100%
HOAX CALLS	0	5	-5	-100%
MALICIOUS / NUISANCE COMMS	47	42	5	12%
NEIGHBOURS	49	41	8	20%
NOISE	10	24	-14	-58%
ROWDY OR INCONSIDERATE BEHAV	250	377	-127	-34%
STREET DRINKING	1	4	-3	-75%
TRESPASS	5	0	5	0%
VEHICLE NUIS & INAPPROP VEH US	26	63	-37	-59%
<b>Sum:</b>	<b>396</b>	<b>589</b>	<b>-193</b>	<b>-33%</b>



# A6 Towns Forum Report

## K012 Rothwell ASB

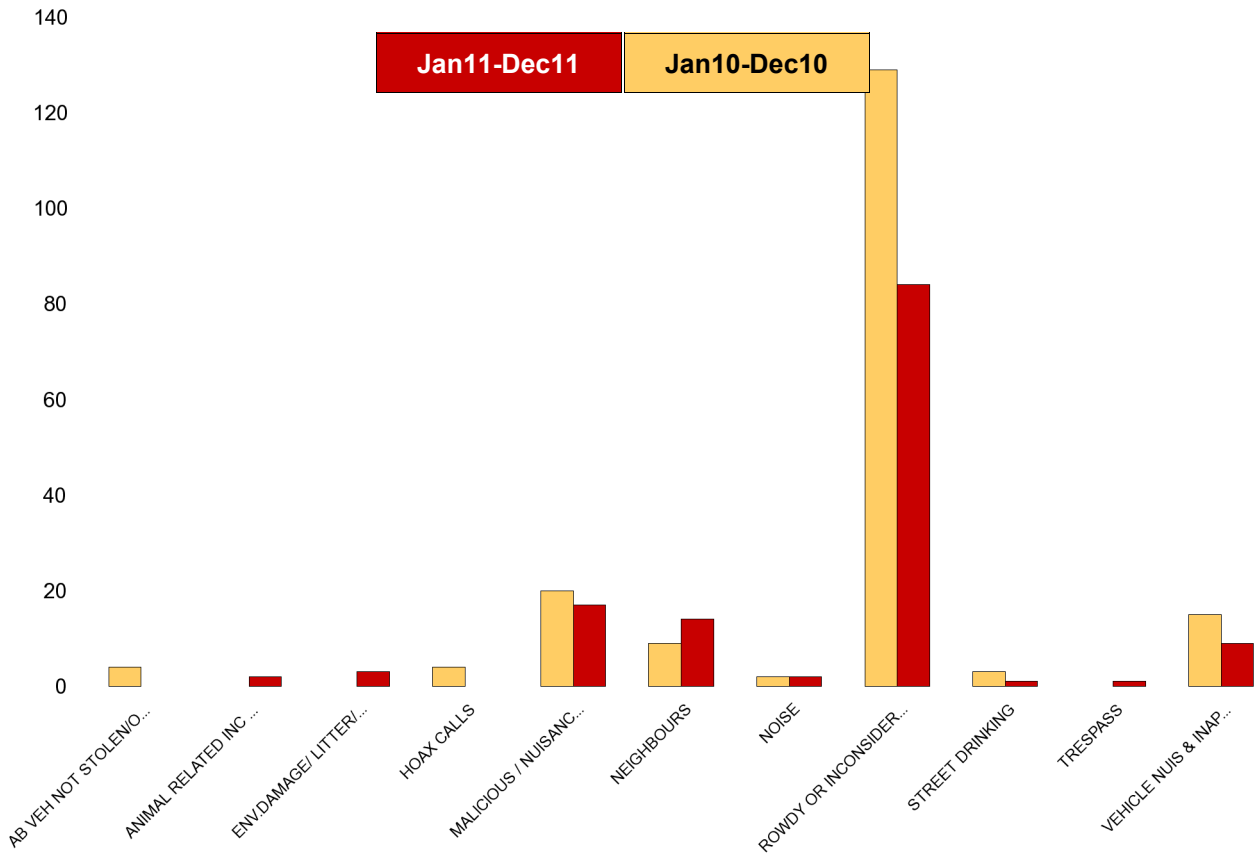
NSIR Closing Cat. 1 Desc	No of Incidents (Jan11-Dec11)	No of Incidents (Jan10-Dec10)	+/- Incidents	% Change Incidents
AB VEH NOT STOLEN/OBSTRUCT	0	14	-14	-100%
ANIMAL RELATED INC ANTI-SOCIAL	4	5	-1	-20%
ENV.DAMAGE/ LITTER/ NEEDLES	8	3	5	167%
HOAX CALLS	2	8	-6	-75%
MALICIOUS / NUISANCE COMMS	47	29	18	62%
NEIGHBOURS	48	34	14	41%
NOISE	13	8	5	63%
ROWDY OR INCONSIDERATE BEHAV	415	428	-13	-3%
STREET DRINKING	1	3	-2	-67%
TRESPASS	2	1	1	100%
VEHICLE NUIS & INAPPROP VEH US	20	53	-33	-62%
<b>Sum:</b>	<b>560</b>	<b>586</b>	<b>-26</b>	<b>-4%</b>



# A6 Towns Forum Report

## K003 Barton ASB

NSIR Closing Cat. 1 Desc	No of Incidents (Jan11-Dec11)	No of Incidents (Jan10-Dec10)	+/- Incidents	% Change Incidents
AB VEH NOT STOLEN/OBSTRUCT	0	4	-4	-100%
ANIMAL RELATED INC ANTI-SOCIAL	2	0	2	0%
ENV.DAMAGE/ LITTER/ NEEDLES	3	0	3	0%
HOAX CALLS	0	4	-4	-100%
MALICIOUS / NUISANCE COMMS	17	20	-3	-15%
NEIGHBOURS	14	9	5	56%
NOISE	2	2	0	0%
ROWDY OR INCONSIDERATE BEHAV	84	129	-45	-35%
STREET DRINKING	1	3	-2	-67%
TRESPASS	1	0	1	0%
VEHICLE NUIS & INAPPROP VEH US	9	15	-6	-40%
<b>Sum:</b>	<b>133</b>	<b>186</b>	<b>-53</b>	<b>-28%</b>



# A6 Towns Forum Report

## K005 Latimer ASB

NSIR Closing Cat. 1 Desc	No of Incidents (Jan11-Dec11)	No of Incidents (Jan10-Dec10)	+/- Incidents	% Change Incidents
AB VEH NOT STOLEN/OBSTRUCT	1	15	-14	-93%
ANIMAL RELATED INC ANTI-SOCIAL	2	2	0	0%
ENV.DAMAGE/ LITTER/ NEEDLES	4	0	4	0%
FIREWORK RELATED INCIDENTS	0	1	-1	-100%
HOAX CALLS	1	7	-6	-86%
MALICIOUS / NUISANCE COMMS	36	46	-10	-22%
NEIGHBOURS	51	30	21	70%
NOISE	20	7	13	186%
ROWDY OR INCONSIDERATE BEHAV	178	220	-42	-19%
STREET DRINKING	2	2	0	0%
VEHICLE NUIS & INAPPROP VEH US	9	40	-31	-78%
<b>Sum:</b>	<b>304</b>	<b>370</b>	<b>-66</b>	<b>-18%</b>

