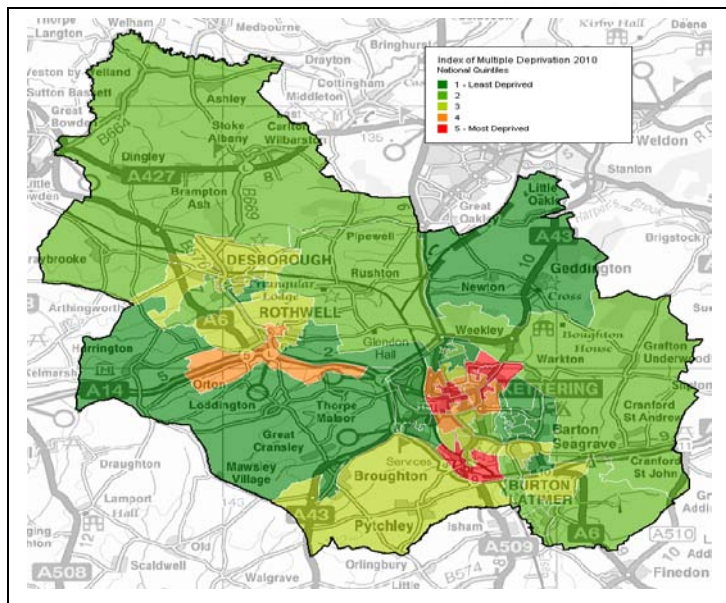


# JSNA Locality Summary Kettering



## Key Challenges for Kettering:

Across the county 5 key challenges have been identified as part of the Joint Strategic Needs Assessment for Northamptonshire. The 3 Challenges highlighted below are those most relevant for Kettering.

- 1. Smoking prevalence** – Approximately 1 in 4 adults smoke in Kettering. This is higher than the county, East Midlands and England average. Decreasing the number of adults smoking in Kettering would reduce the number of premature deaths from **heart disease** and **cancer**.
- 2. Obesity within the family** – Just fewer than 1 in 5 Year 6 children in Kettering are classified as obese. Significantly fewer pupils spend at least three hours each week on school sport. 1 in 4 adults in Kettering are obese. For the population to stay healthier for longer, work must centre on promoting and improving health in all areas, not just districts with significantly high obesity levels.
- 3. Educational attainment** – Levels of young people in full time education and employment in Kettering is worse than the England average. In addition the rate of working age people with no qualifications in Kettering is high, one of the worst 25% districts in England.

Kettering has an older population than the county average. Over the next ten years the age profile is expected to alter, with the older population projected to increase further with 1 in 5 people aged 65+. Deprivation is lower than the national average but 10,000 residents in Kettering live in one of the 20% most deprived areas nationally. The majority of the district is of white ethnicity but the district is more ethnically diverse in the younger age group. The rate of unemployment claimants remains similar to the county average, but young people aged 16-24, have a higher rate of unemployment compared to the county average.

Kettering Population Figures	All ages	0-15	16-64	65+
Resident Population	90.6	18.3	57.7	15.1
Males	44.5	9.3	28.7	6.8
Females	46.1	9.0	29.0	8.2
White *	84.4	16.3	51.0	17.0
Mixed *	1.2	0.6	0.6	0.0
Asian *	2.7	0.8	1.8	0.1
Black *	1.0	0.2	0.8	0.0
Other *	0.8	0.1	0.6	0.0
10% Most deprived *	3.3	0.8	2.0	0.5
20% Most deprived *	10.1	2.0	6.3	1.8
Projected 2020	102.1	20.5	61.6	20.1

Source: ONS Population estimates resident 2010 & 2009

Figures rounded to the nearest thousand residents

\* 16-64 figures actually 16-64 Male + 16-59 Female

## Other areas worthy of consideration specific to Kettering:

- Households in fuel poverty – Kettering is significantly high compared to England
- Statutory homelessness – In 2009/10 there were 82 homeless households in Kettering which is above the average, even if not significantly so.
- Deaths from road traffic accidents – in all age groups and especially children are higher but not significantly higher than England

## What do consultations & surveys tell us about the wishes and needs of the local population?

### Children & Young People at the Kettering area board - top 5 issues and concerns of importance to them:

1. Accessibility of services
2. Crime & community safety including internet safety
3. Drugs & substance misuse
4. Educational support
5. Facilities & services available including affordable sports activities

### Locally identified priorities for the police as at November 2011:

#### Kettering Town:

1. Motorcycle Nuisance on Scott Road, Kettering

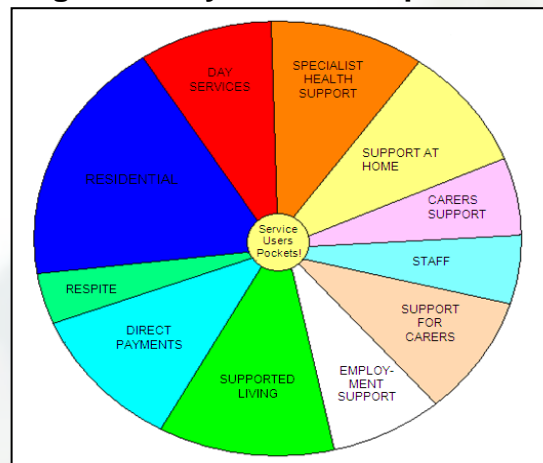
#### Kettering Rural:

1. People causing vandalism and a nuisance in the areas of: Gordon Street, Jubilee Street and Coronation Ave, Rothwell.
2. Speeding in Burton Latimer, Station Road, Queensway, Churchill Way and Higham Road

### Satisfaction with local GP surgeries 2010/11:

1. People in Kettering are more satisfied with the care they receive at their surgeries. On average people registered with Kettering GP's are 92% very to fairly satisfied with the care they receive compared to England and Northamptonshire as a whole where the average is 90%
2. When asked if they would recommend their GP practice to someone who had moved to the area people in Kettering were more likely to say yes, 88% of respondents said 'Yes Definitely' or 'Yes' they might recommend if asked, which is higher than the county 84% and England average of 83%

### Learning Disability area board priorities:



### Focus on Kettering's Voluntary and Community Sector: Accommodation Concern

**Helping to build thriving cohesive communities**

**Providing job skills or return to work training**

**Building safe and strong communities**

**Healthy people who enjoy a good quality of life**



Accommodation Concern helps to build sustainable communities by preventing and alleviating homelessness, supporting volunteering and encouraging cohesion e.g. dealing with neighbour disputes. They provide skills training in budgeting and managing a tenancy, and have now extended this to include job skills, and return to work activities. Work with rough sleepers has reduced begging and is helping to reduce acquisitive crime. Acting as an impartial advice and support service, they assist any person in the community. The support services on offer enable individuals who have been assessed as vulnerable and likely to lose their homes to undertake a planned programme of support. Examples may include drug/alcohol maintenance or reduction, becoming registered with a G.P. or dentist, or avoiding non planned hospital admissions, for instance. The advice services enable members of the community to become housed, or keep their current housing, thus improving quality of life.

**Key:**

- Significantly better than England average
- Not significantly different from England average
- Significantly worse than England average
- No significance can be calculated

**England Key:**



	Indicator	Local Number	Local Value	Eng Avg	Eng Worst	England Range	Eng Best
Demographics	1 Urban Living Population	57818	70.6	73.1	100.0		0.0
	2 Children in Poverty	2965	14.2	20.9	57.0		5.7
	3 Statutory Homelessness	82	2.2	1.9	8.3		0.1
	4 Local Authority Dwellings	3812	9.4	7.9	34.1		0.0
	5 NI No registrations to adult overseas nationals	400	5.5	13.4	158.4		0.7
Social	6 Violence against the Person	1304	14.5	14.8	61.4		9.7
	7 Sexual Offences	81	0.9	1.0	3.4		0.6
	8 Drug Offences	245	2.7	4.1	60.1		1.6
	9 Theft Offences	2574	28.6	33.1	379.7		18.8
Child Health	10 Low birthweight births	84	6.7	7.5	10.6		0.0
	11 Children's tooth decay (at age 12)	n/a	0.8	0.7	1.6		0.2
	12 Obese Children (Reception)	n/a	11.0	9.8	14.7		5.4
	13 Obese Children (Year 6)	n/a	19.5	18.7	28.6		10.7
	14 Physically Active Children	6450	48.8	55.1	26.7		80.3
	15 Children killed or seriously injured in road traffic accidents	9	50.0	23.4	116.3		0.0
	16 Teenage Conceptions	203	41.1	40.2	69.4		14.6
	17 Chlamydia in under 25 year olds	84	4.0	6.0	13.6		2.4
Child Wellbeing	18 Early Years Pupils Achieving a Good Level of Development	693	59.0	56.0	39.0		73.0
	19 GCSE achieved (5A*-C) inc. Eng & Maths	672	55.4	55.3	38.0		78.6
	20 Children subject to child protection plan	42	20.8	38.3	107.2		0.0
	21 Children Looked After by local authority	95	47.0	59.0	142.0		0.0
	22 Children Eligible for Free School Meals	1396	11.5	17.6	54.8		2.9
	23 Youth First Time Entrants to the Justice System	71	8.3	11.5	24.3		4.1
	24 Young people in full time education or employment	9600	86.5	87.8	68.7		100.0
	Adult Health	25 Self Reported as 'Good' Health	56907	70.3	69.1	60.3	
26 Adult Obesity		n/a	24.9	24.2	30.7		13.9
27 Adult Physical Activity		n/a	10.1	11.5	5.8		19.5
28 Adults who Smoke		n/a	24.4	22.2	35.9		11.2
29 Adult High Risk Drinkers		n/a	25.4	23.6	39.4		11.5
30 People diagnosed with diabetes		3830	5.0	5.4	7.9		3.3
31 People with Common Mental Health Conditions		9055	163.0	161.4	0.0		0.0
32 Incidence of All Cancers		1278	382.9	374.0	486.8		234.0
33 People aged 16-64 who are disabled		11300	19.1	18.8	31.5		5.9
34 People with Long Term Limiting Illness		13278	16.2	17.9	30.8		10.9
Adult Wellbeing	35 Estimated Households in Fuel Poverty	6371	20.3	15.6	34.8		6.4
	36 Lone Parent Families with Dependent Children	2252	21.7	25.2	47.9		8.4
	37 Working Age people with No Qualifications	9300	15.9	13.3	22.0		3.1
	38 JSA Claimants (Sept 2011)	2133	3.7	3.8	7.9		0.4
	39 People aged 16-64 disabled and employed	5000	44.4	49.0	25.2		85.0
	40 Households with no Car or Van	7002	20.3	26.8	62.0		8.8
	41 Emergency Hospital Stays for assault under 35	30	83.6	96.5	294.8		0.0
Older People	42 Falls in the 65+ population	3945	268.4	267.0	0.0		0.0
	43 Hip Fracture in the 65+ population	84	4.1	4.6	6.3		3.1
	44 Dementia in the 65+ population	1052	71.6	71.4	86.9		60.7
	45 Depression in the 65+ population	1270	86.4	86.4	88.0		78.1
	46 Living Alone in the 65+ population	5419	368.6	370.7	396.9		352.1
	47 Care Home residency in the 65+ population	516	35.1	37.2	0.0		0.0
	48 Excess Winter Deaths in the 65+ population	39	15.5	18.1	32.1		5.4
	Life Expectancy	49 Male Life Expectancy	n/a	78.3	78.3	73.7	
50 Male Inequality in LE		n/a	9.5	7.5	16.6		-0.8
51 Male DFLE		n/a	63.4	61.7	50.4		71.5
52 Female Life Expectancy		n/a	81.9	82.3	79.1		89.0
53 Female Inequality in LE		n/a	5.9	5.4	13.1		-1.3
54 Female DFLE at Birth		n/a	65.2	64.1	54.0		71.3
Mortality	55 All Age All Cause Mortality	2423	568.9	567.1	773.5		353.5
	56 Infant Mortality (per 1000 Live Births)	19	5.2	4.7	14.7		0.7
	57 Early Deaths: Heart Disease	71	73.0	70.5	122.1		37.9
	58 Early Deaths: Cancer	104	107.3	112.1	159.1		76.1
	59 Mortality from Road Traffic Accidents	13	5.1	4.3	15.6		0.0
	60 Mortality from Suicide	17	6.7	5.8	14.6		0.0

## Indicator Notes

**1** The % of resident population, 2001 **2** The % children in families receiving means-tested benefits & low income, 2008 **3** Crude rate per 1,000 households, 2009/10 **4** The % of total dwellings, April 2010 **5** The % of resident population, 2001 **6** Crude rate per 1,000 resident population, 2010/11 **7** Crude rate per 1,000 resident population, 2010/11 **8** Crude rate per 1,000 resident population, 2010/11 **9** Crude rate per 1,000 resident population, 2010/11 **10** The % of live and still births, 2009 **11** Weighted mean number of decayed, missing or filled teeth in 12 year olds, 2008/09 **12** The % of school children in Reception Year, 2009/10 **13** The % of school children in Year 6, 2009/10 **14** The % of year 1-13 pupils who spend at least 3 hours per week on high quality PE and school sport 2009/10 **15** Crude rate per 100,000 population under 16, 2009 **16** Under 18 conception rate per 1,000 females aged 15-17 crude rate 2007-2009 (provisional) **17** The % of the population aged 15-24 testing positive for Chlamydia, 2009/10 **18** The % Early Years Foundation Stage Pupils Achieving a Good Level of Development **19** The % at Key Stage 4 2009/10 **20** Crude rate per 10,000 population aged 10-17, as of 31st March 2011 **21** Crude rate per 10,000 population aged under 18 (excluding asylum seekers), as of 31st March 2011 **22** The % School Pupils Eligible for Free School Meals **23** Crude rate per 1,000 population aged 10-17, 2009/10 **24** The % of all young people (aged 18-24), 2009 **25** The % of household residents self reported their health status as good for the preceding 12 months, 2001 **26** The % adults, modelled estimate using Health Survey for England 2006-2008 (revised) **27** The % aged 16+ 2009/10 **28** The % adults (16+), modelled estimate using Health Survey for England, 2006-2008 **29** The % aged 16+ in the resident population, 2008 **30** The % of people on GP registers with a recorded diagnosis of diabetes 2009/10 **31** Crude rate of projected counts per 1,000 resident population, 2010 **32** Directly age-standardised registration rates (DSR) per 100,000 population, 2006-2008 **33** The % population aged 16-64 who are disabled, November 2011 **34** The % of resident population, 2001 **35** The % of modelled households that were fuel poor in 2008 **36** The % of all families with dependent children (under 18), Census 2001 **37** The % of working population (aged 16-64), 2010 **38** The % of resident population aged 16-64, September 2011 **39** The % Employment rate disabled population aged 16-64, November 2011 **40** The % of all households, 2001 **41** Directly age standardised hospital emergency admission rate per 100,000 population under 35, 2009/10 **42** Crude rate of projected counts per 1,000 resident population 65+, 2010 **43** Directly age and sex standardised rate for emergency admission 65+, 2009/10 **44** Crude rate of projected counts per 1,000 resident population 65+, 2010 **45** Crude rate of projected counts per 1,000 resident population 65+, 2010 **46** Crude rate of projected counts per 1,000 resident population 65+, 2010 **47** Crude rate of projected counts per 1,000 resident population 65+, 2010 **48** Ratio of excess winter deaths (observed winter deaths minus expected deaths based on non-winter deaths) to average non-winter deaths 1.08.06-31.07.09 **49** At birth, 2007-09 **50** Gap of Life Expectancy (years) for males between the best-off and worst-off deprivation decile within a district, 2005-2009 **51** Disability-free life expectancy at birth for males, 1999-2003 **52** At birth, 2007-09 **53** Gap of Life Expectancy (years) for females between the best-off and worst-off deprivation decile within a district, 2005-2009 **54** Disability-free life expectancy at birth for females, 1999-2003 **55** Directly age standardised rate per 100,000 population, 2007-2009 **56** Rate per 1,000 live births, 2007-2009 **57** Directly age standardised rate per 100,000 population under 75, 2007-2009 **58** Directly age standardised rate per 100,000 population under 75, 2007-2009 **59** Directly age standardised rate per 100,000 population, 2007-2009 **60** Directly age standardised rate per 100,000 population, 2007-2009

## Key District Contact Information:

Kettering Borough Council [www.kettering.gov.uk](http://www.kettering.gov.uk) Switchboard Telephone: 01536 410333

Northamptonshire LINK [www.northamptonshire-link.org.uk](http://www.northamptonshire-link.org.uk)

NHS Northamptonshire [www.northamptonshire.nhs.uk](http://www.northamptonshire.nhs.uk) Switchboard Telephone: 01604 651100

Northamptonshire County Council [www.northamptonshire.gov.uk](http://www.northamptonshire.gov.uk) Switchboard Telephone: 01604 236236

Northamptonshire County Council Adult Care Team Direct Dial Telephone: 0845 124 4500

Northamptonshire Police [www.northants.police.uk](http://www.northants.police.uk) Non Emergency & Enquiries Telephone: 101

NVC Northants [www.nvconline.org.uk](http://www.nvconline.org.uk) Switchboard Telephone 01604 637522