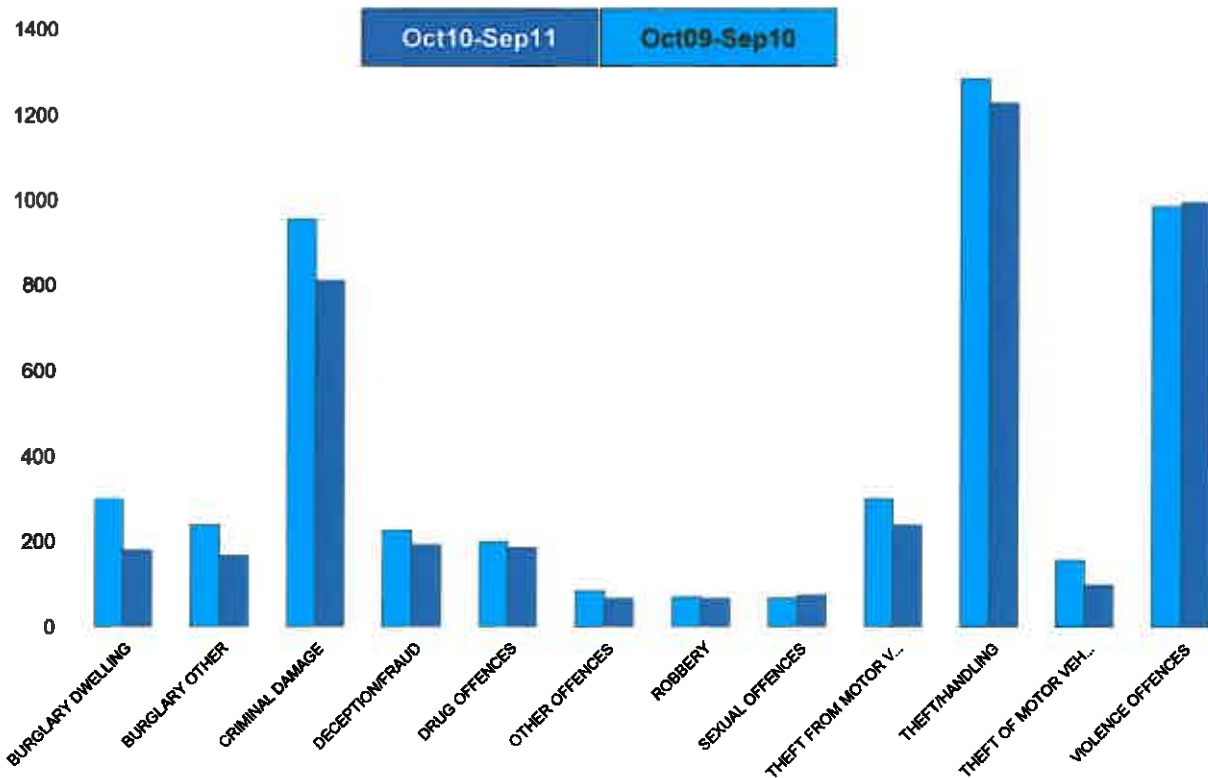


Kettering Town Forum Report

Kettering Town SCT - Crime

HO Group	No of Crimes (Oct10-Sep11)	No of Crimes (Oct09-Sep10)	+/- Crime	% Change	No of Cleared Up Crimes	Detection Rate (Past 12 Months)
BURGLARY DWELLING	179	299	-120	-40%	51	28%
BURGLARY OTHER	165	237	-72	-30%	20	12%
CRIMINAL DAMAGE	810	955	-145	-15%	199	25%
DECEPTION/FRAUD	192	224	-32	-14%	66	34%
DRUG OFFENCES	184	199	-15	-8%	188	102%
OTHER OFFENCES	66	84	-18	-21%	46	70%
ROBBERY	66	69	-3	-4%	18	27%
SEXUAL OFFENCES	74	66	8	12%	32	43%
THEFT FROM MOTOR VEHICLES	238	298	-60	-20%	37	16%
THEFT/HANDLING	1227	1284	-57	-4%	422	34%
THEFT OF MOTOR VEHICLES	98	155	-57	-37%	17	17%
VIOLENCE OFFENCES	994	986	8	1%	436	44%
Sum:	4293	4856	-563	-12%	1532	36%

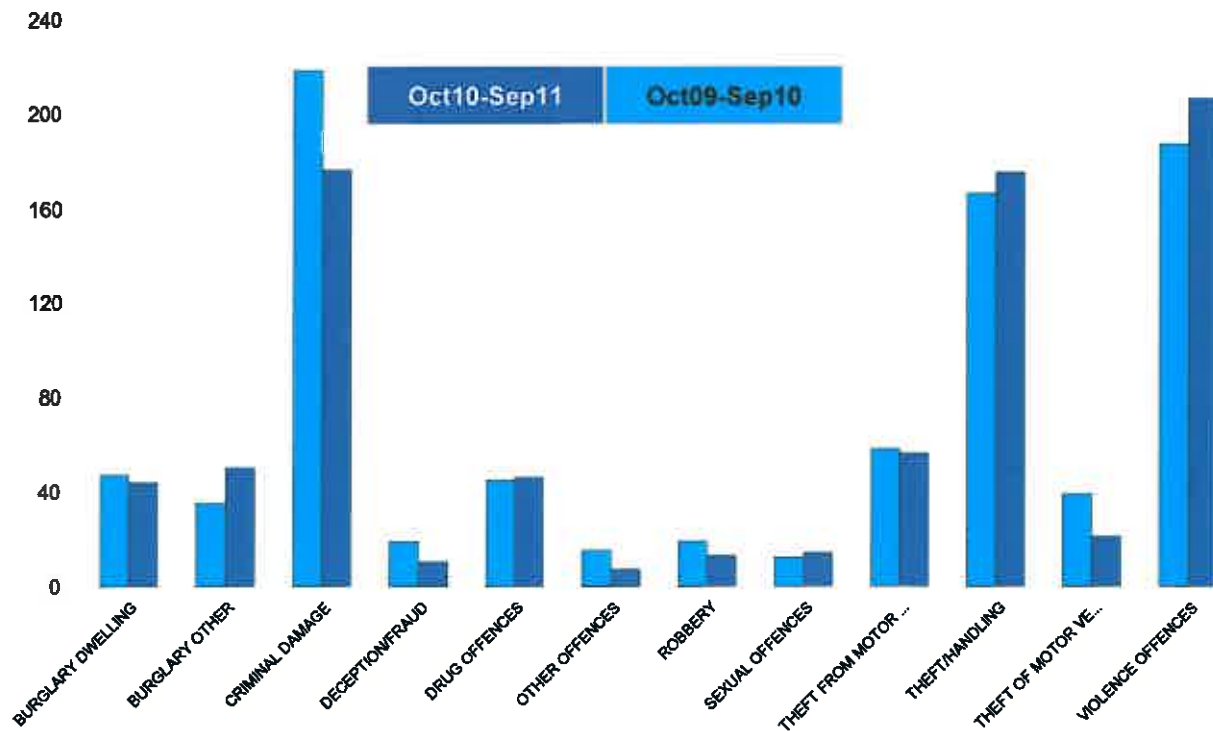


Kettering Town Forum Report

All Saints

HO Group	No of Crimes (Oct10-Sep11)	No of Crimes (Oct09-Sep10)	+/- Crime	% Change
BURGLARY DWELLING	44	47	-3	-6%
BURGLARY OTHER	50	35	15	43%
CRIMINAL DAMAGE	176	218	-42	-19%
DECEPTION/FRAUD	10	19	-9	-47%
DRUG OFFENCES	46	45	1	2%
OTHER OFFENCES	7	15	-8	-53%
ROBBERY	13	19	-6	-32%
SEXUAL OFFENCES	14	12	2	17%
THEFT FROM MOTOR VEHICLES	56	58	-2	-3%
THEFT/HANDLING	175	166	9	5%
THEFT OF MOTOR VEHICLES	21	39	-18	-46%
VIOLENCE OFFENCES	206	187	19	10%
Sum:	818	860	-42	-5%

No of Cleared Up Crimes	Detection Rate (Past 12 Months)
15	34%
4	8%
43	24%
3	30%
51	111%
7	100%
5	38%
5	36%
5	9%
50	29%
3	14%
86	42%
277	34%

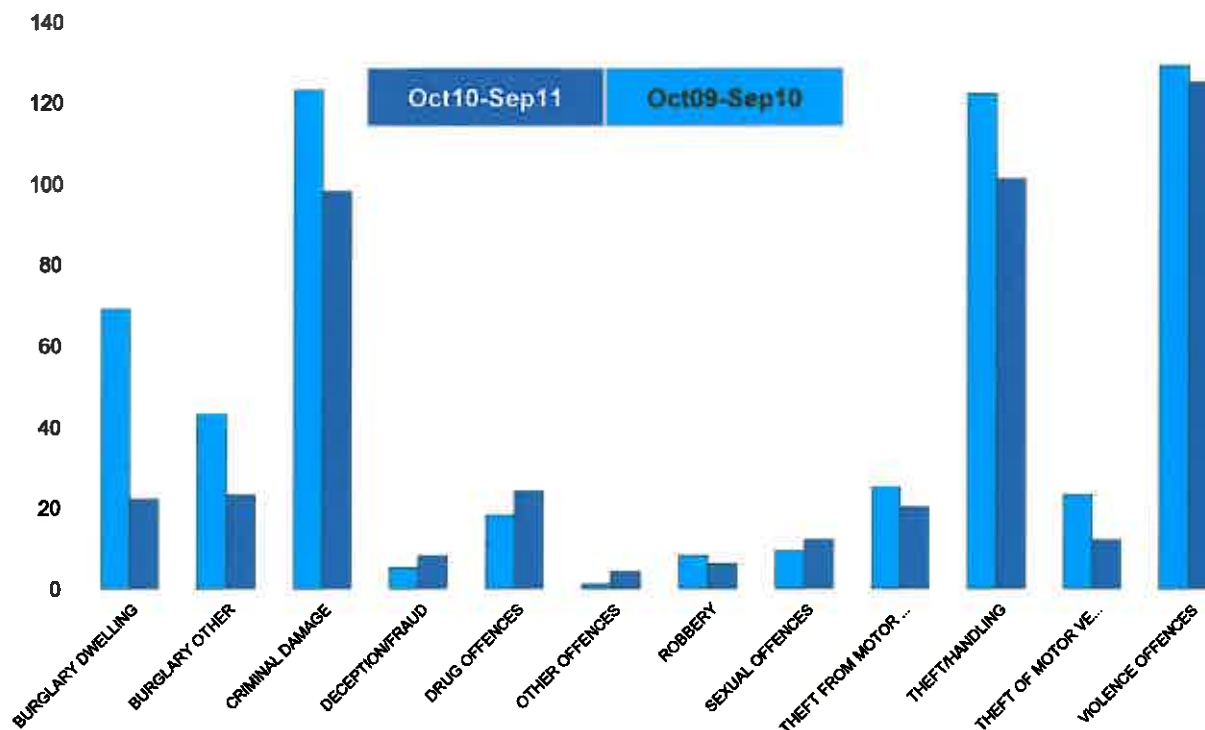


Kettering Town Forum Report

Avondale Grange

HO Group	No of Crimes (Oct10-Sep11)	No of Crimes (Oct09-Sep10)	+/- Crime	% Change
BURGLARY DWELLING	22	69	-47	-68%
BURGLARY OTHER	23	43	-20	-47%
CRIMINAL DAMAGE	98	123	-25	-20%
DECEPTION/FRAUD	8	5	3	60%
DRUG OFFENCES	24	18	6	33%
OTHER OFFENCES	4	1	3	300%
ROBBERY	6	8	-2	-25%
SEXUAL OFFENCES	12	9	3	33%
THEFT FROM MOTOR VEHICLES	20	25	-5	-20%
THEFT/HANDLING	101	122	-21	-17%
THEFT OF MOTOR VEHICLES	12	23	-11	-48%
VIOLENCE OFFENCES	125	129	-4	-3%
Sum:	455	575	-120	-21%

No of Cleared Up Crimes	Detection Rate (Past 12 Months)
5	23%
2	9%
19	19%
0	0%
23	96%
2	50%
0	0%
3	25%
0	0%
29	29%
1	8%
53	42%
137	30%

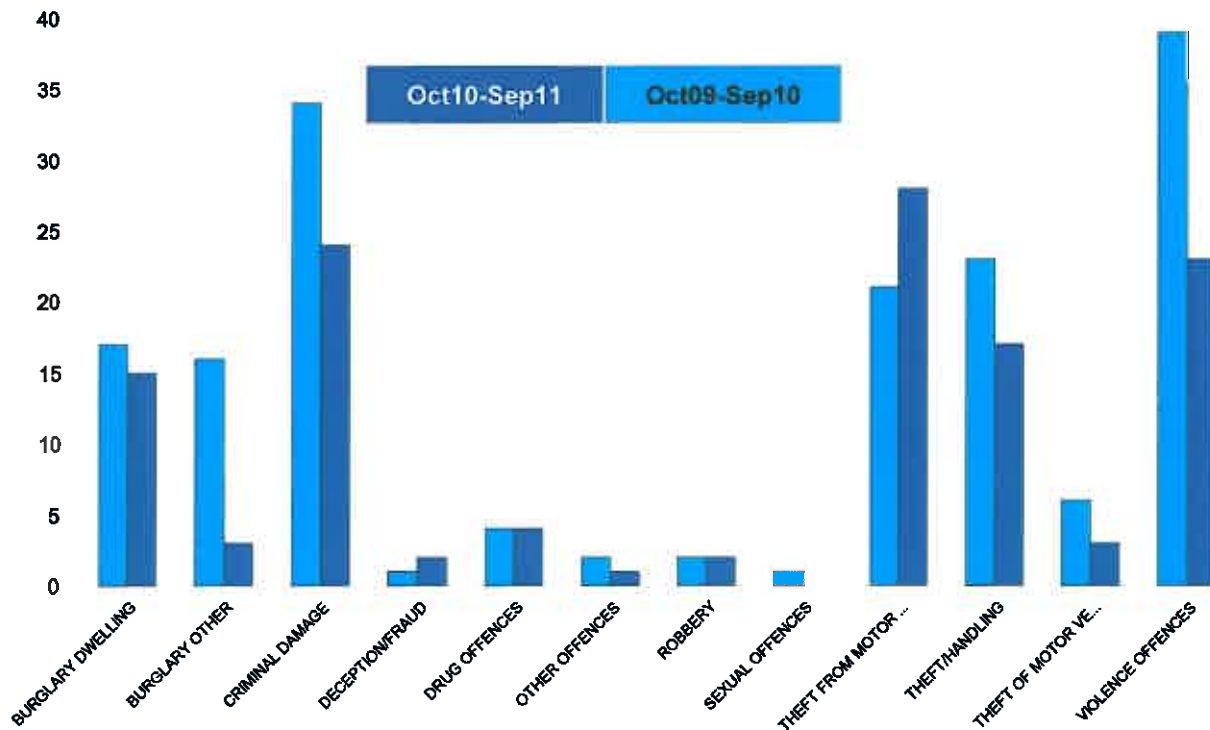


Kettering Town Forum Report

Brambleside

HO Group	No of Crimes (Oct10-Sep11)	No of Crimes (Oct09-Sep10)	+/- Crime	% Change
BURGLARY DWELLING	15	17	-2	-12%
BURGLARY OTHER	3	16	-13	-81%
CRIMINAL DAMAGE	24	34	-10	-29%
DECEPTION/FRAUD	2	1	1	100%
DRUG OFFENCES	4	4	0	0%
OTHER OFFENCES	1	2	-1	-50%
ROBBERY	2	2	0	0%
SEXUAL OFFENCES	0	1	-1	-100%
THEFT FROM MOTOR VEHICLES	28	21	7	33%
THEFT/HANDLING	17	23	-6	-26%
THEFT OF MOTOR VEHICLES	3	6	-3	-50%
VIOLENCE OFFENCES	23	39	-16	-41%
Sum:	122	166	-44	-27%

No of Cleared Up Crimes	Detection Rate (Past 12 Months)
2	13%
0	0%
5	21%
0	0%
4	100%
1	100%
0	0%
0	0%
1	4%
0	0%
0	0%
9	39%
22	18%

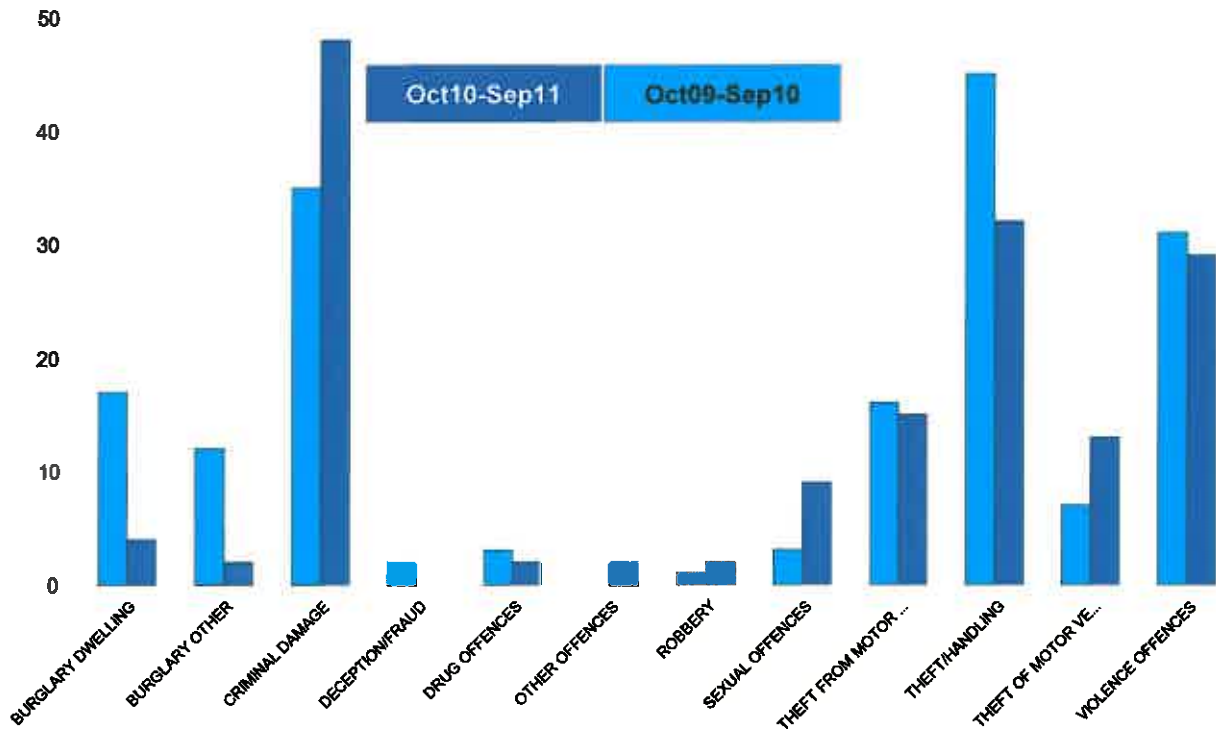


Kettering Town Forum Report

Ise Lodge

HO Group	No of Crimes (Oct10-Sep11)	No of Crimes (Oct09-Sep10)	+/- Crime	% Change
BURGLARY DWELLING	4	17	-13	-76%
BURGLARY OTHER	2	12	-10	-83%
CRIMINAL DAMAGE	48	35	13	37%
DECEPTION/FRAUD	0	2	-2	-100%
DRUG OFFENCES	2	3	-1	-33%
OTHER OFFENCES	2	0	2	0%
ROBBERY	2	1	1	100%
SEXUAL OFFENCES	9	3	6	200%
THEFT FROM MOTOR VEHICLES	15	16	-1	-6%
THEFT/HANDLING	32	45	-13	-29%
THEFT OF MOTOR VEHICLES	13	7	6	86%
VIOLENCE OFFENCES	29	31	-2	-6%
Sum:	158	172	-14	-8%

No of Cleared Up Crimes	Detection Rate (Past 12 Months)
0	0%
0	0%
5	10%
0	0%
2	100%
1	50%
0	0%
0	0%
2	13%
5	16%
4	31%
11	38%
30	19%

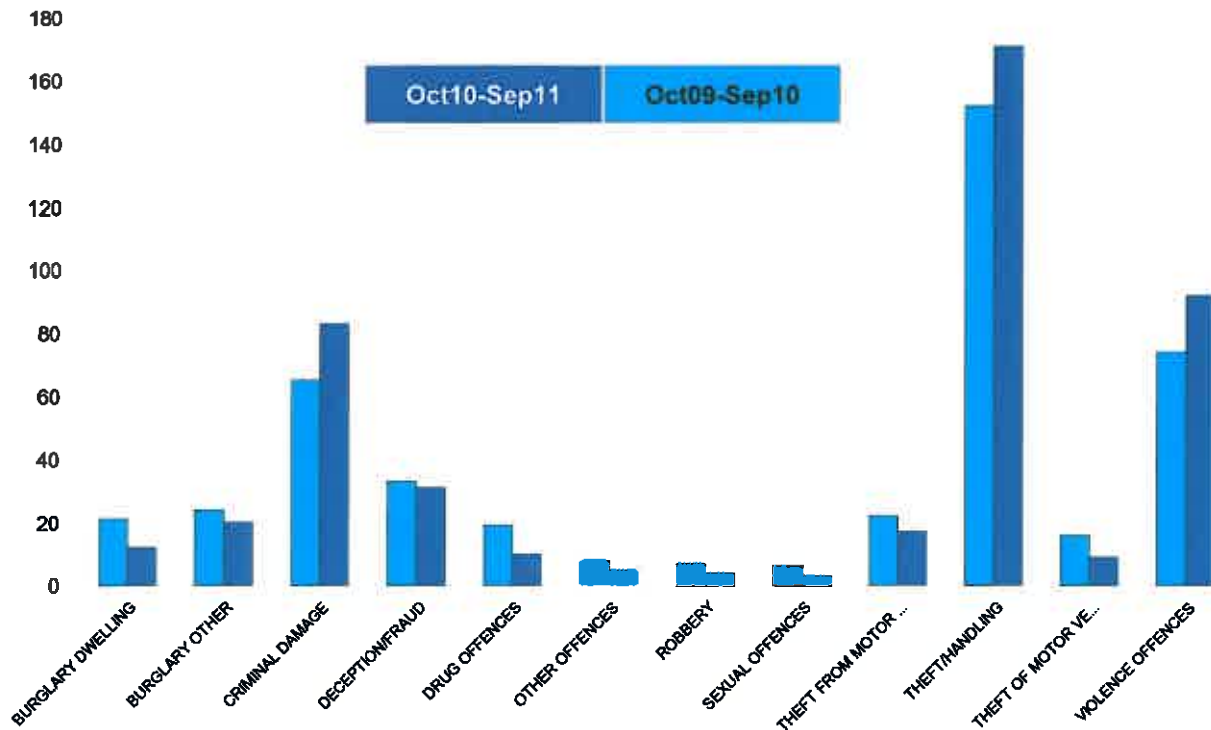


Kettering Town Forum Report

Northfield

HO Group	No of Crimes (Oct10-Sep11)	No of Crimes (Oct09-Sep10)	+/- Crime	% Change
BURGLARY DWELLING	12	21	-9	-43%
BURGLARY OTHER	20	24	-4	-17%
CRIMINAL DAMAGE	83	65	18	28%
DECEPTION/FRAUD	31	33	-2	-6%
DRUG OFFENCES	10	19	-9	-47%
OTHER OFFENCES	5	8	-3	-38%
ROBBERY	4	7	-3	-43%
SEXUAL OFFENCES	3	6	-3	-50%
THEFT FROM MOTOR VEHICLES	17	22	-5	-23%
THEFT/HANDLING	171	152	19	13%
THEFT OF MOTOR VEHICLES	9	16	-7	-44%
VIOLENCE OFFENCES	92	74	18	24%
Sum:	457	447	10	2%

No of Cleared Up Crimes	Detection Rate (Past 12 Months)
1	8%
1	5%
20	24%
4	13%
11	110%
5	100%
1	25%
1	33%
1	6%
85	50%
1	11%
37	40%
168	37%

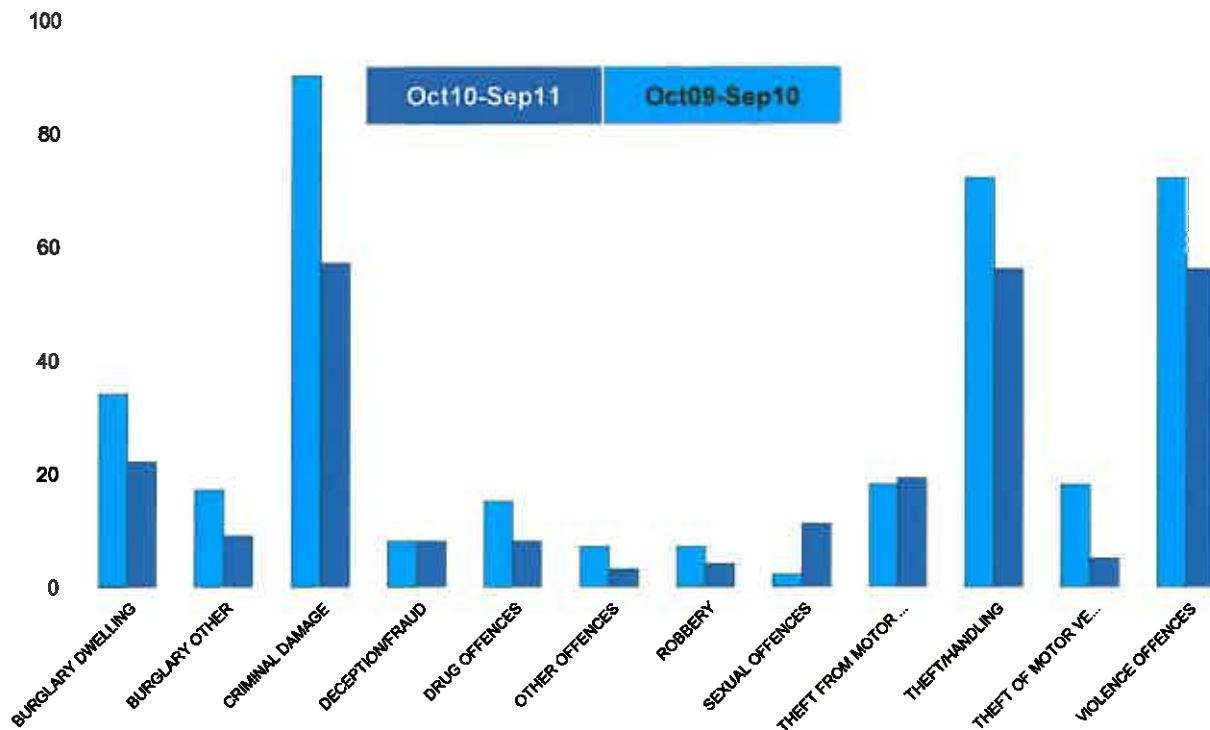


Kettering Town Forum Report

Pipers Hill

HO Group	No of Crimes (Oct10-Sep11)	No of Crimes (Oct09-Sep10)	+/- Crime	% Change
BURGLARY DWELLING	22	34	-12	-35%
BURGLARY OTHER	9	17	-8	-47%
CRIMINAL DAMAGE	57	90	-33	-37%
DECEPTION/FRAUD	8	8	0	0%
DRUG OFFENCES	8	15	-7	-47%
OTHER OFFENCES	3	7	-4	-57%
ROBBERY	4	7	-3	-43%
SEXUAL OFFENCES	11	2	9	450%
THEFT FROM MOTOR VEHICLES	19	18	1	6%
THEFT/HANDLING	56	72	-16	-22%
THEFT OF MOTOR VEHICLES	5	18	-13	-72%
VIOLENCE OFFENCES	56	72	-16	-22%
Sum:	258	360	-102	-28%

No of Cleared Up Crimes	Detection Rate (Past 12 Months)
13	59%
1	11%
11	19%
1	13%
9	113%
2	67%
1	25%
7	64%
3	16%
14	25%
1	20%
24	43%
87	34%

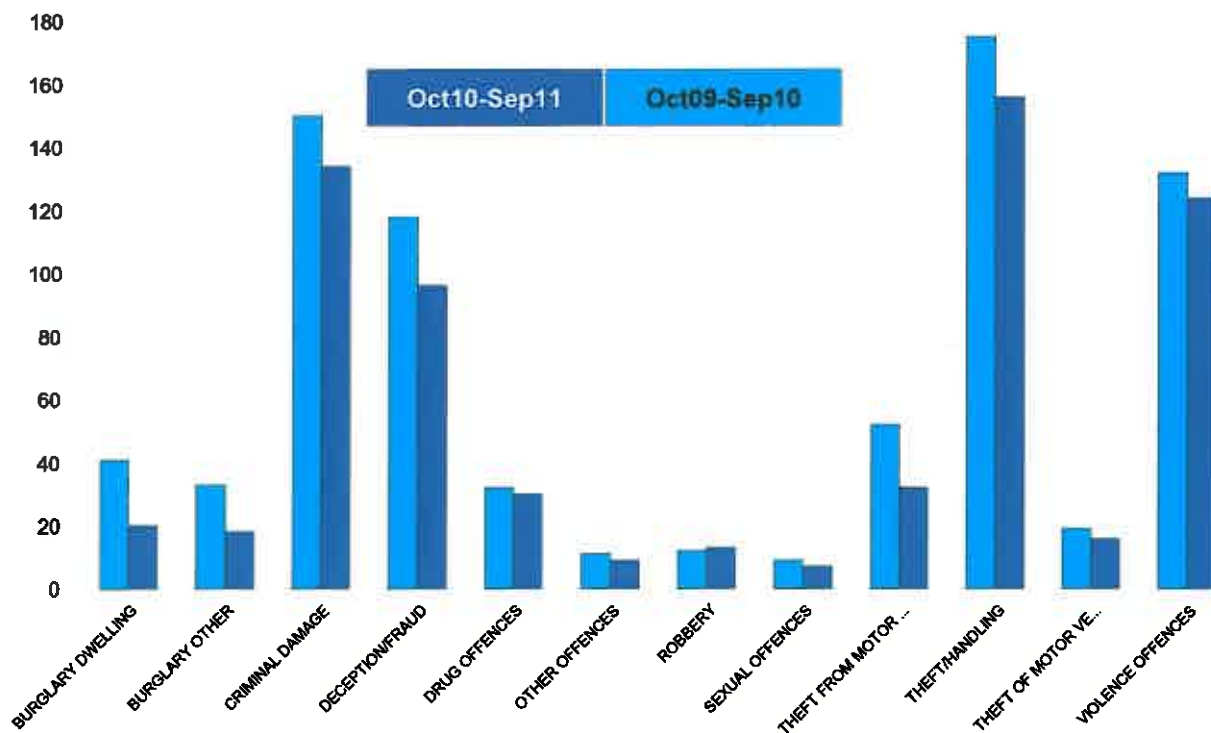


Kettering Town Forum Report

St Michaels and Wicksteed

HO Group	No of Crimes (Oct10-Sep11)	No of Crimes (Oct09-Sep10)	+/- Crime	% Change
BURGLARY DWELLING	20	41	-21	-51%
BURGLARY OTHER	18	33	-15	-45%
CRIMINAL DAMAGE	134	150	-16	-11%
DECEPTION/FRAUD	96	118	-22	-19%
DRUG OFFENCES	30	32	-2	-6%
OTHER OFFENCES	9	11	-2	-18%
ROBBERY	13	12	1	8%
SEXUAL OFFENCES	7	9	-2	-22%
THEFT FROM MOTOR VEHICLES	32	52	-20	-38%
THEFT/HANDLING	156	175	-19	-11%
THEFT OF MOTOR VEHICLES	16	19	-3	-16%
VIOLENCE OFFENCES	124	132	-8	-6%
Sum:	655	784	-129	-16%

No of Cleared Up Crimes	Detection Rate (Past 12 Months)
5	25%
3	17%
38	28%
34	35%
29	97%
5	56%
6	46%
7	100%
16	50%
45	29%
2	13%
52	42%
242	37%

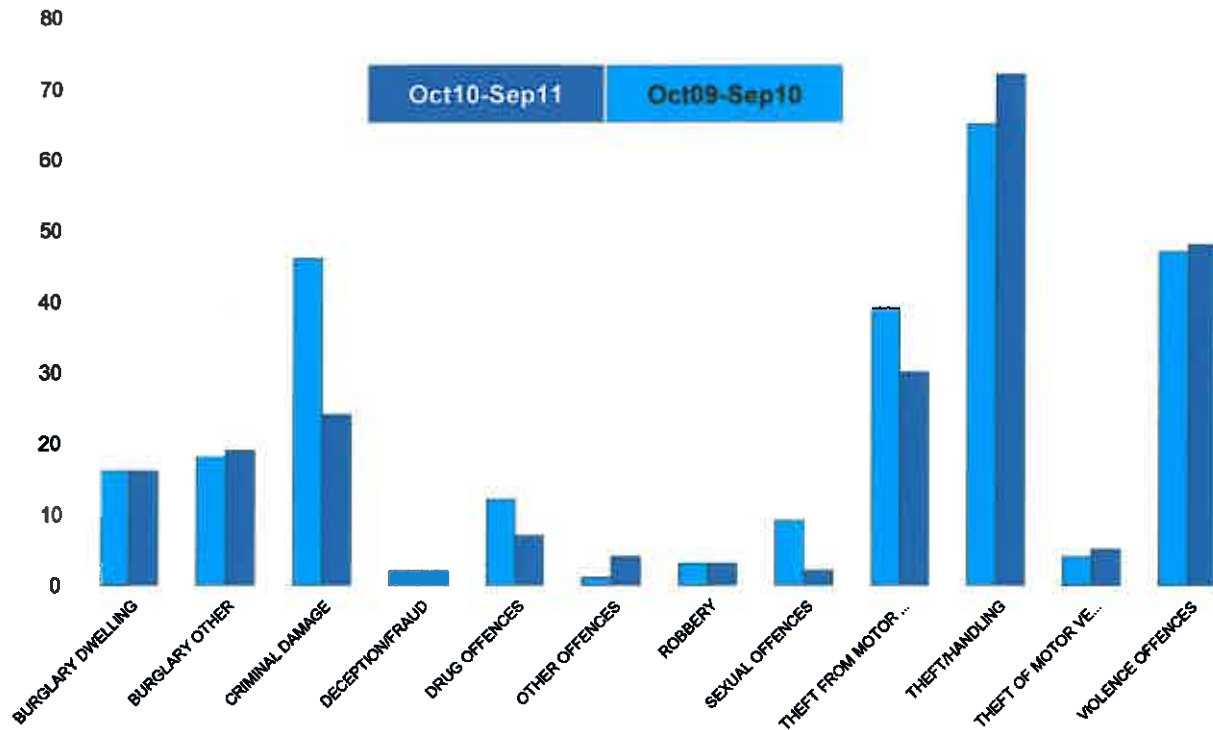


Kettering Town Forum Report

St Peters

HO Group	No of Crimes (Oct10-Sep11)	No of Crimes (Oct09-Sep10)	+/- Crime	% Change
BURGLARY DWELLING	16	16	0	0%
BURGLARY OTHER	19	18	1	6%
CRIMINAL DAMAGE	24	46	-22	-48%
DECEPTION/FRAUD	2	2	0	0%
DRUG OFFENCES	7	12	-5	-42%
OTHER OFFENCES	4	1	3	300%
ROBBERY	3	3	0	0%
SEXUAL OFFENCES	2	9	-7	-78%
THEFT FROM MOTOR VEHICLES	30	39	-9	-23%
THEFT/HANDLING	72	65	7	11%
THEFT OF MOTOR VEHICLES	5	4	1	25%
VIOLENCE OFFENCES	48	47	1	2%
Sum:	232	262	-30	-11%

No of Cleared Up Crimes	Detection Rate (Past 12 Months)
0	0%
3	16%
5	21%
0	0%
8	114%
0	0%
3	100%
1	50%
4	13%
7	10%
0	0%
23	48%
54	23%

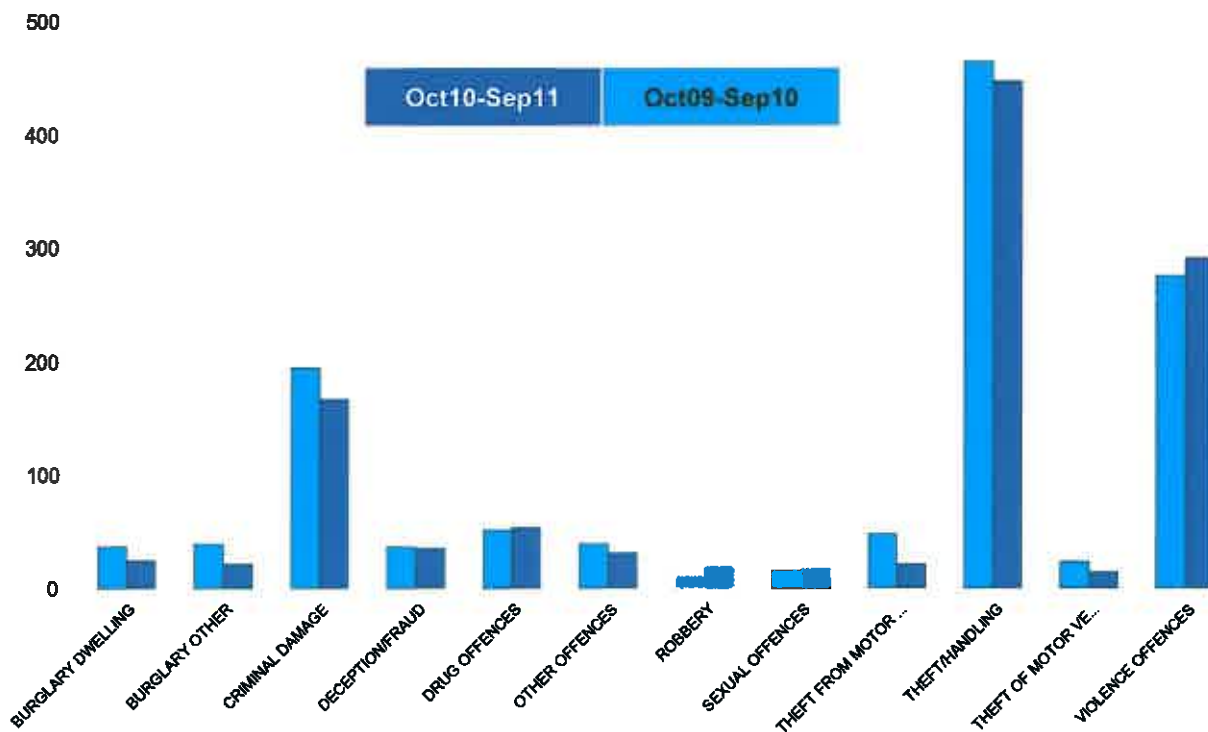


Kettering Town Forum Report

William Knibb

HO Group	No of Crimes (Oct10-Sep11)	No of Crimes (Oct09-Sep10)	+/- Crime	% Change
BURGLARY DWELLING	24	37	-13	-35%
BURGLARY OTHER	21	39	-18	-46%
CRIMINAL DAMAGE	186	194	-28	-14%
DECEPTION/FRAUD	35	36	-1	-3%
DRUG OFFENCES	53	51	2	4%
OTHER OFFENCES	31	39	-8	-21%
ROBBERY	19	10	9	90%
SEXUAL OFFENCES	16	15	1	7%
THEFT FROM MOTOR VEHICLES	21	47	-26	-55%
THEFT/HANDLING	447	464	-17	-4%
THEFT OF MOTOR VEHICLES	14	23	-9	-39%
VIOLENCE OFFENCES	291	275	16	6%
Sum:	1138	1230	-92	-7%

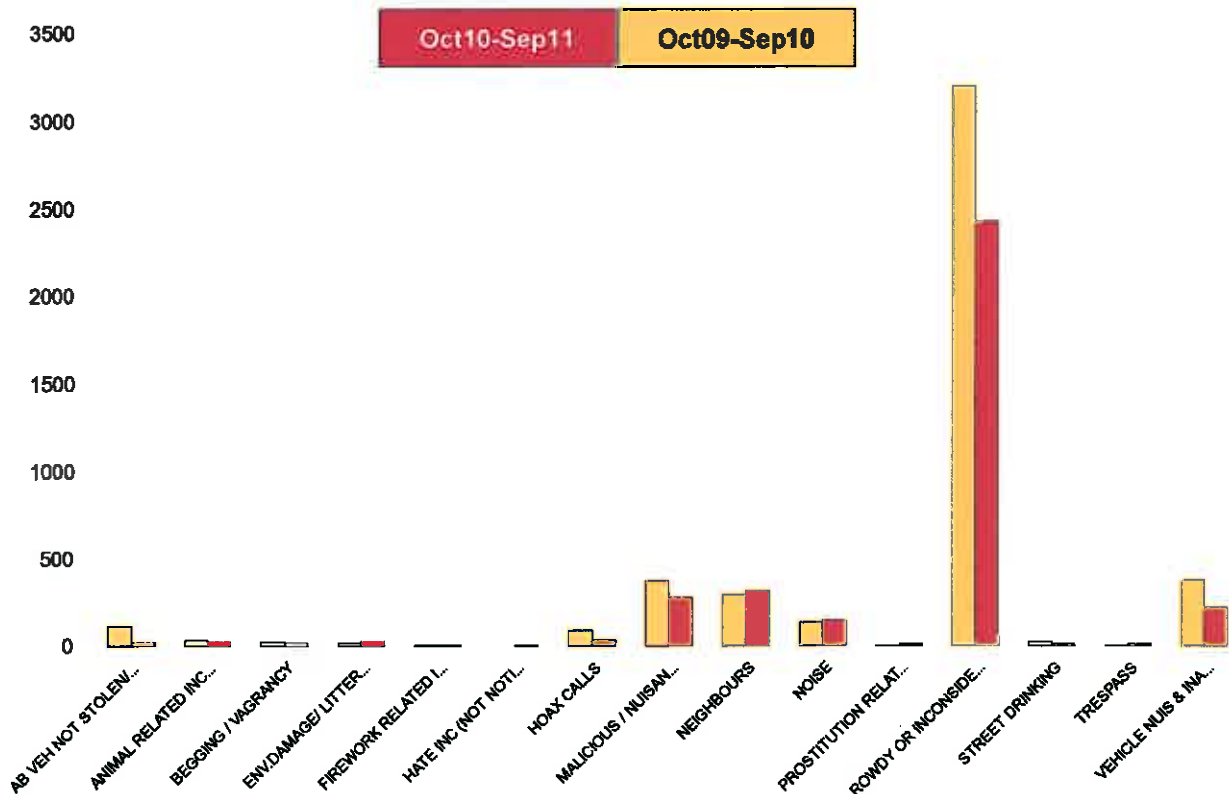
No of Cleared Up Crimes	Detection Rate (Past 12 Months)
10	42%
6	29%
53	32%
24	69%
51	96%
23	74%
2	11%
8	50%
5	24%
187	42%
5	36%
141	48%
515	45%



Kettering Town Forum Report

Kettering Town SCT - ASB

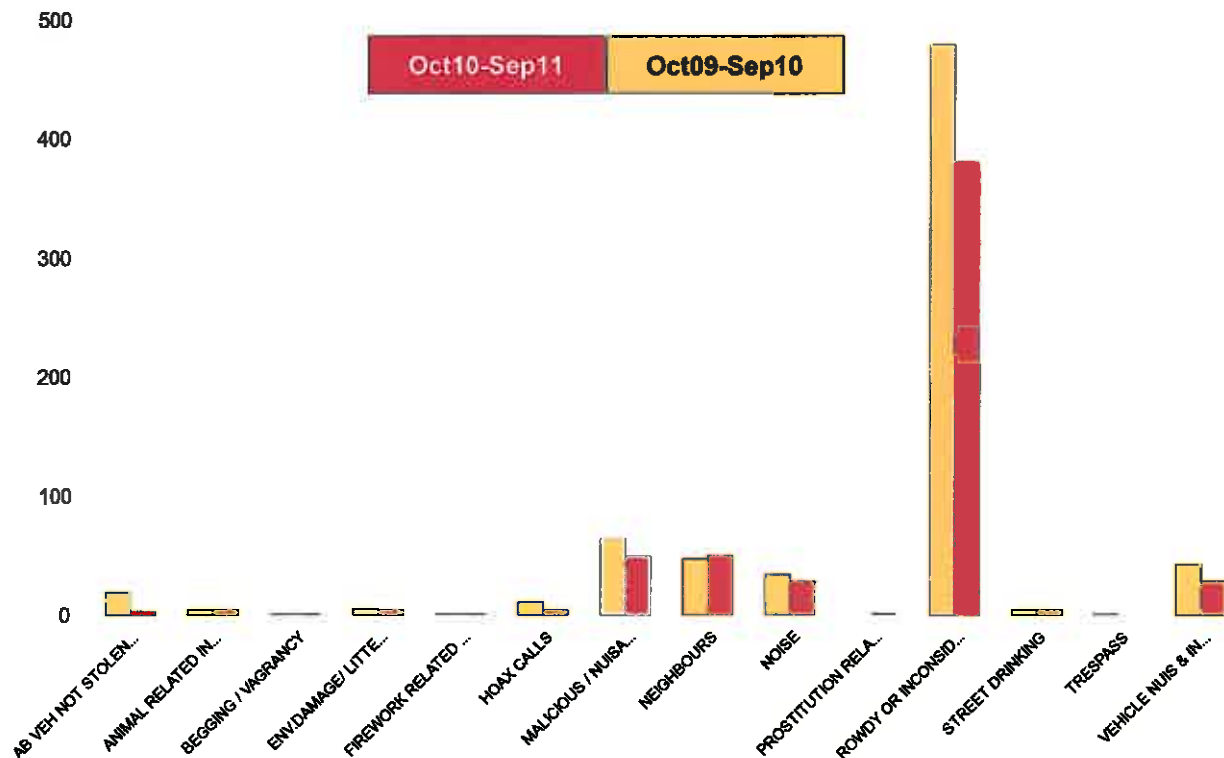
NSIR Closing Cat. 1 Desc	No of Incidents (Oct10-Sep11)	No of Incidents (Oct09-Sep10)	+/- Incidents	% Change Incidents
AB VEH NOT STOLEN/OBSTRUCT	21	106	-85	-80%
ANIMAL RELATED INC ANTI-SOCIAL	26	32	-6	-19%
BEGGING / VAGRANCY	21	27	-6	-22%
ENV.DAMAGE/ LITTER/ NEEDLES	25	20	5	25%
FIREWORK RELATED INCIDENTS	10	7	3	43%
HATE INC (NOT NOTIFIABLE CRIME	4	0	4	0%
HOAX CALLS	34	87	-53	-61%
MALICIOUS / NUISANCE COMMS	274	366	-92	-25%
NEIGHBOURS	310	289	21	7%
NOISE	146	133	13	10%
PROSTITUTION RELATED ACTIVITY	11	1	10	1000%
ROWDY OR INCONSIDERATE BEHAV	2426	3200	-774	-24%
STREET DRINKING	13	27	-14	-52%
TRESPASS	11	5	6	120%
VEHICLE NUIS & INAPPROP VEH US	215	374	-159	-43%
Sum:	3547	4674	-1,127	-24%



Kettering Town Forum Report

All Saints

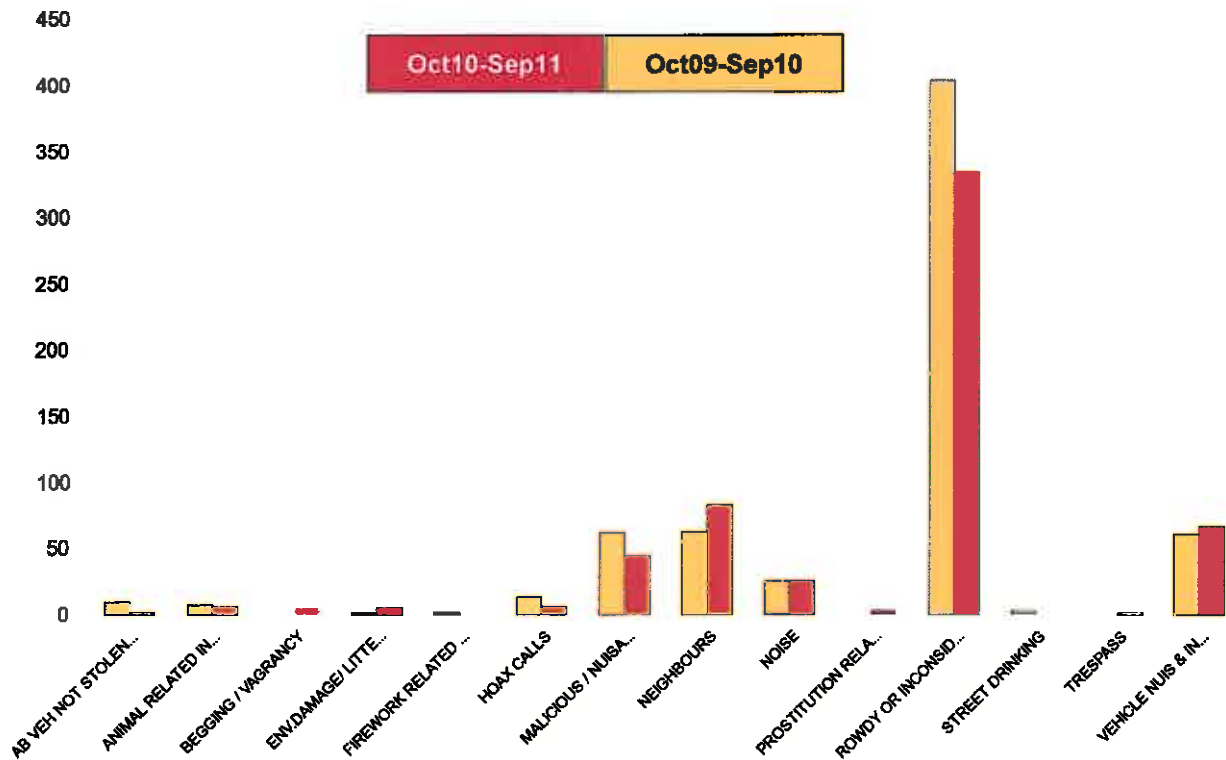
NSIR Closing Cat. 1 Desc	No of Incidents (Oct10-Sep11)	No of Incidents (Oct09-Sep10)	+/- Incidents	% Change Incidents
AB VEH NOT STOLEN/OBSTRUCT	3	19	-16	-84%
ANIMAL RELATED INC ANTI-SOCIAL	4	4	0	0%
BEGGING / VAGRANCY	1	1	0	0%
ENV.DAMAGE/ LITTER/ NEEDLES	4	5	-1	-20%
FIREWORK RELATED INCIDENTS	1	1	0	0%
HOAX CALLS	4	10	-6	-60%
MALICIOUS / NUISANCE COMMS	49	64	-15	-23%
NEIGHBOURS	49	46	3	7%
NOISE	28	34	-6	-18%
PROSTITUTION RELATED ACTIVITY	1	0	1	0%
ROWDY OR INCONSIDERATE BEHAV	380	479	-99	-21%
STREET DRINKING	4	4	0	0%
TRESPASS	0	1	-1	-100%
VEHICLE NUIS & INAPPROP VEH US	28	42	-14	-33%
Sum:	556	710	-154	-22%



Kettering Town Forum Report

Avondale Grange

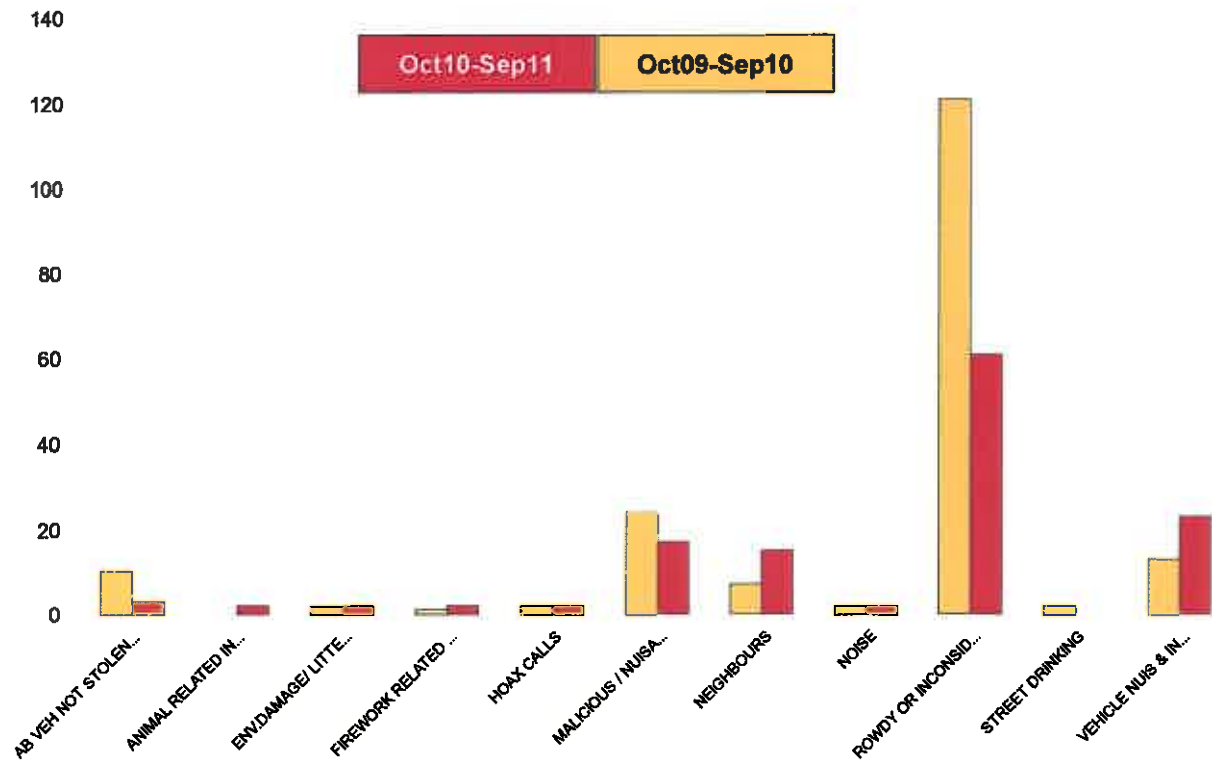
NSIR Closing Cat. 1 Desc	No of Incidents (Oct10-Sep11)	No of Incidents (Oct09-Sep10)	+/- Incidents	% Change Incidents
AB VEH NOT STOLEN/OBSTRUCT	1	9	-8	-89%
ANIMAL RELATED INC ANTI-SOCIAL	6	7	-1	-14%
BEGGING / VAGRANCY	4	0	4	0%
ENV.DAMAGE/ LITTER/ NEEDLES	5	1	4	400%
FIREWORK RELATED INCIDENTS	0	1	-1	-100%
HOAX CALLS	6	13	-7	-54%
MALICIOUS / NUISANCE COMMS	44	61	-17	-28%
NEIGHBOURS	82	62	20	32%
NOISE	25	25	0	0%
PROSTITUTION RELATED ACTIVITY	2	0	2	0%
ROWDY OR INCONSIDERATE BEHAV	334	403	-69	-17%
STREET DRINKING	0	2	-2	-100%
TRESPASS	1	0	1	0%
VEHICLE NUIS & INAPPROP VEH US	66	60	6	10%
Sum:	576	644	-68	-11%



Kettering Town Forum Report

Brambleside

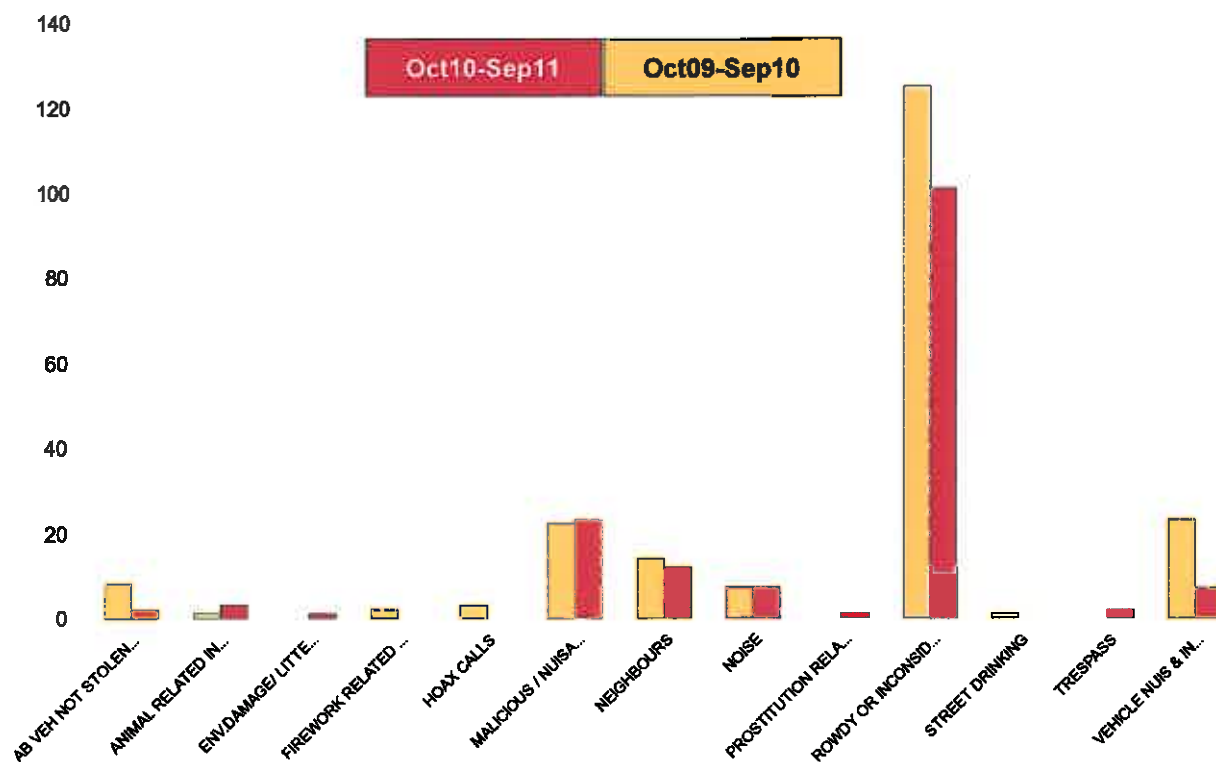
NSIR Closing Cat. 1 Desc	No of Incidents (Oct10-Sep11)	No of Incidents (Oct09-Sep10)	+/- Incidents	% Change Incidents
AB VEH NOT STOLEN/OBSTRUCT	3	10	-7	-70%
ANIMAL RELATED INC ANTI-SOCIAL	2	0	2	0%
ENV.DAMAGE/ LITTER/ NEEDLES	2	2	0	0%
FIREWORK RELATED INCIDENTS	2	1	1	100%
HOAX CALLS	2	2	0	0%
MALICIOUS / NUISANCE COMMS	17	24	-7	-29%
NEIGHBOURS	15	7	8	114%
NOISE	2	2	0	0%
ROWDY OR INCONSIDERATE BEHAV	61	121	-60	-50%
STREET DRINKING	0	2	-2	-100%
VEHICLE NUIS & INAPPROP VEH US	23	13	10	77%
Sum:	129	184	-55	-30%



Kettering Town Forum Report

Ise Lodge

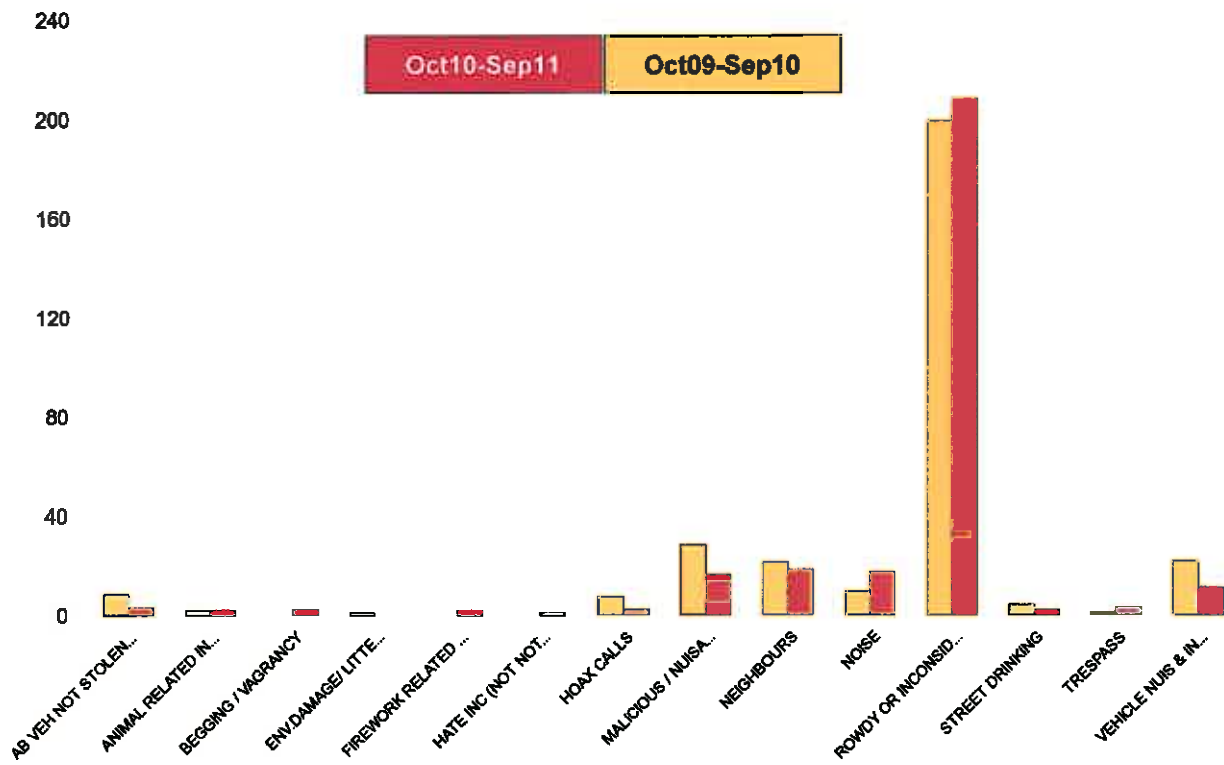
NSIR Closing Cat. 1 Desc	No of Incidents (Oct10-Sep11)	No of Incidents (Oct09-Sep10)	+/- Incidents	% Change Incidents
AB VEH NOT STOLEN/OBSTRUCT	2	8	-6	-75%
ANIMAL RELATED INC ANTI-SOCIAL	3	1	2	200%
ENV.DAMAGE/ LITTER/ NEEDLES	1	0	1	0%
FIREWORK RELATED INCIDENTS	0	2	-2	-100%
HOAX CALLS	0	3	-3	-100%
MALICIOUS / NUISANCE COMMS	23	22	1	5%
NEIGHBOURS	12	14	-2	-14%
NOISE	7	7	0	0%
PROSTITUTION RELATED ACTIVITY	1	0	1	0%
ROWDY OR INCONSIDERATE BEHAV	101	125	-24	-19%
STREET DRINKING	0	1	-1	-100%
TRESPASS	2	0	2	0%
VEHICLE NUIS & INAPPROP VEH US	7	23	-16	-70%
Sum:	159	206	-47	-23%



Kettering Town Forum Report

Northfield

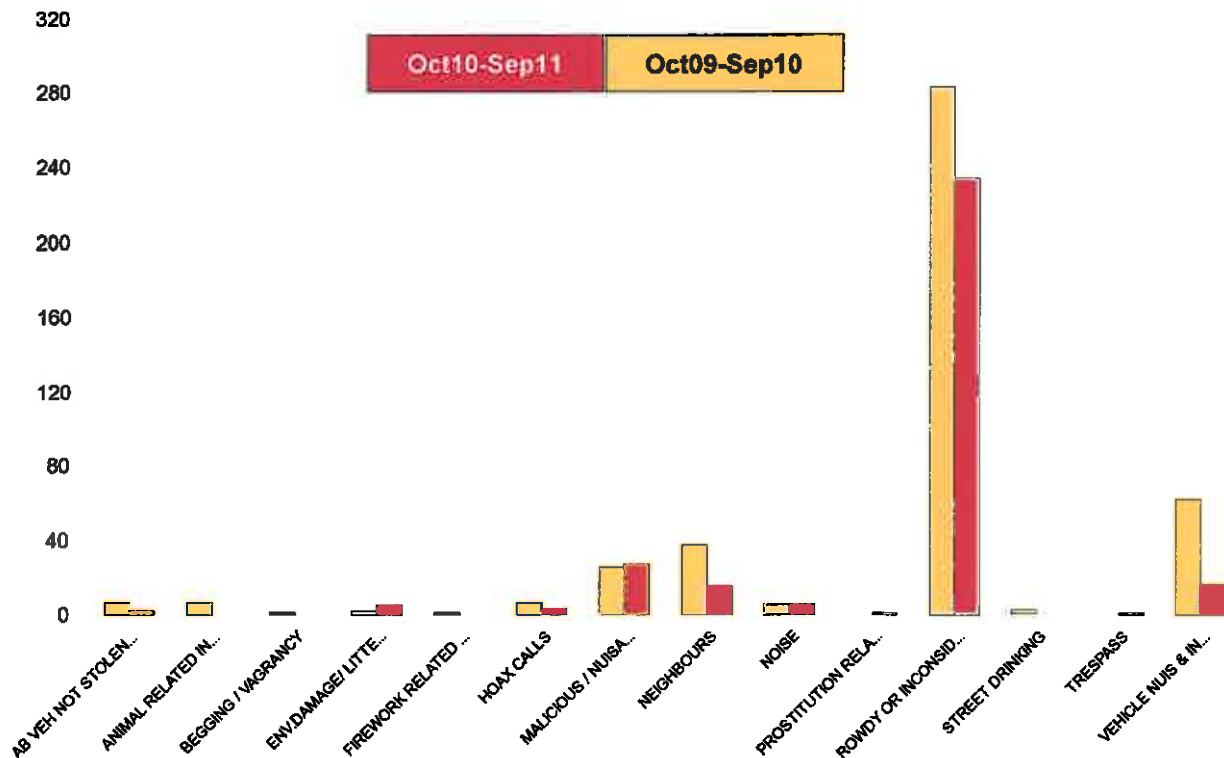
NSIR Closing Cat. 1 Desc	No of Incidents (Oct10-Sep11)	No of Incidents (Oct09-Sep10)	+/- Incidents	% Change Incidents
AB VEH NOT STOLEN/OBSTRUCT	3	8	-5	-63%
ANIMAL RELATED INC ANTI-SOCIAL	2	2	0	0%
BEGGING / VAGRANCY	2	0	2	0%
ENV.DAMAGE/ LITTER/ NEEDLES	0	1	-1	-100%
FIREWORK RELATED INCIDENTS	2	0	2	0%
HATE INC (NOT NOTIFIABLE CRIME	1	0	1	0%
HOAX CALLS	2	7	-5	-71%
MALICIOUS / NUISANCE COMMS	16	28	-12	-43%
NEIGHBOURS	18	21	-3	-14%
NOISE	17	9	8	89%
ROWDY OR INCONSIDERATE BEHAV	208	199	9	5%
STREET DRINKING	2	4	-2	-50%
TRESPASS	3	1	2	200%
VEHICLE NUIS & INAPPROP VEH US	11	22	-11	-50%
Sum:	287	302	-15	-5%



Kettering Town Forum Report

Pipers Hill

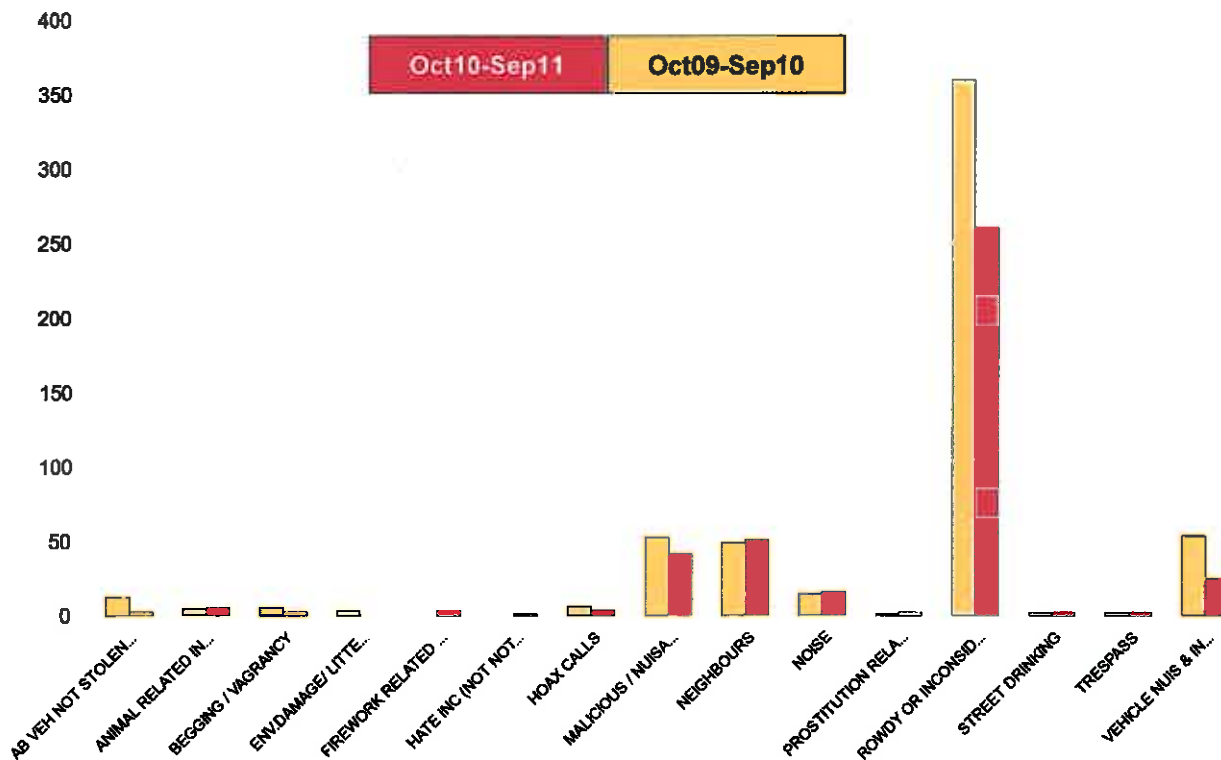
NSIR Closing Cat. 1 Desc	No of Incidents (Oct10-Sep11)	No of Incidents (Oct09-Sep10)	+/- Incidents	% Change Incidents
AB VEH NOT STOLEN/OBSTRUCT	2	6	-4	-67%
ANIMAL RELATED INC ANTI-SOCIAL	0	6	-6	-100%
BEGGING / VAGRANCY	0	1	-1	-100%
ENV.DAMAGE/ LITTER/ NEEDLES	5	2	3	150%
FIREWORK RELATED INCIDENTS	0	1	-1	-100%
HOAX CALLS	3	6	-3	-50%
MALICIOUS / NUISANCE COMMS	27	25	2	8%
NEIGHBOURS	15	37	-22	-59%
NOISE	5	5	0	0%
PROSTITUTION RELATED ACTIVITY	1	0	1	0%
ROWDY OR INCONSIDERATE BEHAV	234	283	-49	-17%
STREET DRINKING	0	2	-2	-100%
TRESPASS	1	0	1	0%
VEHICLE NUIS & INAPPROP VEH US	16	61	-45	-74%
Sum:	309	435	-126	-29%



Kettering Town Forum Report

St Michaels and Wicksteed

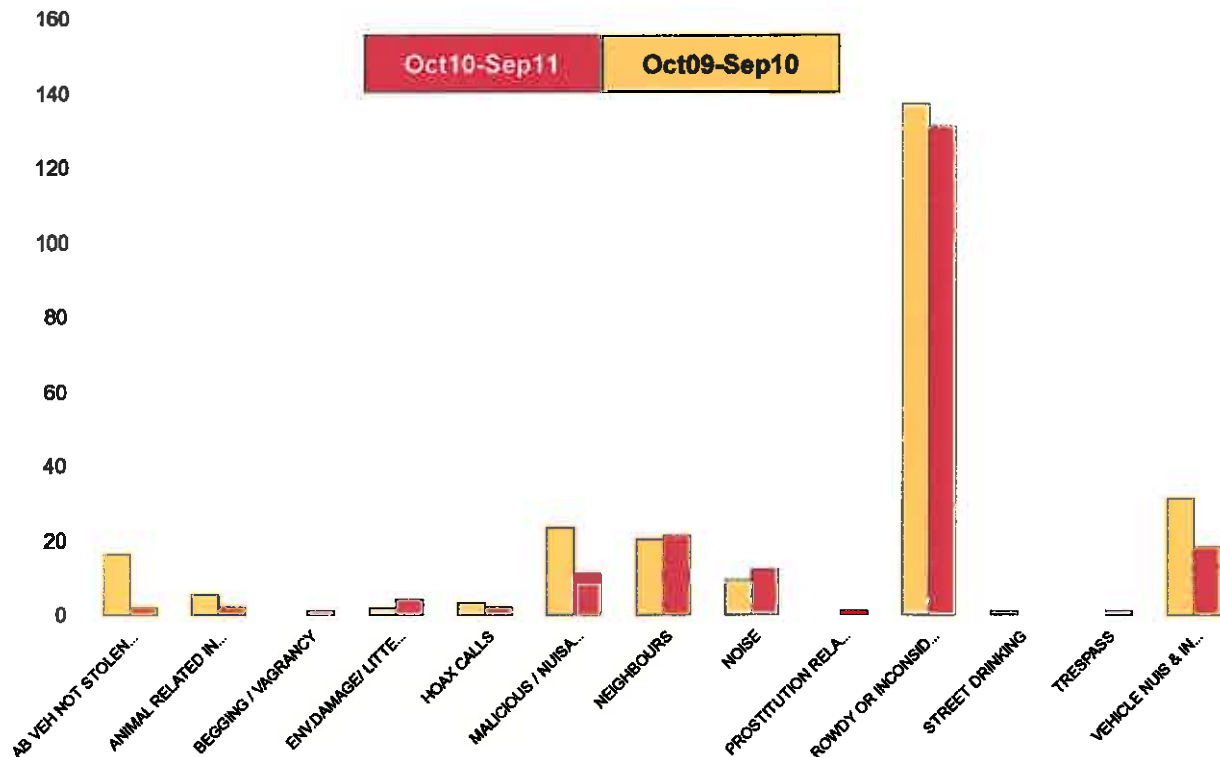
NSIR Closing Cat. 1 Desc	No of Incidents (Oct10-Sep11)	No of Incidents (Oct09-Sep10)	+/- Incidents	% Change Incidents
AB VEH NOT STOLEN/OBSTRUCT	2	12	-10	-83%
ANIMAL RELATED INC ANTI-SOCIAL	5	4	1	25%
BEGGING / VAGRANCY	2	5	-3	-60%
ENV.DAMAGE/ LITTER/ NEEDLES	0	3	-3	-100%
FIREWORK RELATED INCIDENTS	3	0	3	0%
HATE INC (NOT NOTIFIABLE CRIME	1	0	1	0%
HOAX CALLS	3	6	-3	-50%
MALICIOUS / NUISANCE COMMS	41	52	-11	-21%
NEIGHBOURS	50	48	2	4%
NOISE	15	14	1	7%
PROSTITUTION RELATED ACTIVITY	2	1	1	100%
ROWDY OR INCONSIDERATE BEHAV	260	359	-99	-28%
STREET DRINKING	2	2	0	0%
TRESPASS	2	2	0	0%
VEHICLE NUJIS & INAPPROP VEH US	24	53	-29	-55%
Sum:	412	561	-149	-27%



Kettering Town Forum Report

St Peters

NSIR Closing Cat. 1 Desc	No of Incidents (Oct10-Sep11)	No of Incidents (Oct09-Sep10)	+/- Incidents	% Change Incidents
AB VEH NOT STOLEN/OBSTRUCT	2	16	-14	-88%
ANIMAL RELATED INC ANTI-SOCIAL	2	5	-3	-60%
BEGGING / VAGRANCY	1	0	1	0%
ENV.DAMAGE/ LITTER/ NEEDLES	4	2	2	100%
HOAX CALLS	2	3	-1	-33%
MALICIOUS / NUISANCE COMMS	11	23	-12	-52%
NEIGHBOURS	21	20	1	5%
NOISE	12	9	3	33%
PROSTITUTION RELATED ACTIVITY	1	0	1	0%
ROWDY OR INCONSIDERATE BEHAV	131	137	-6	-4%
STREET DRINKING	0	1	-1	-100%
TRESPASS	1	0	1	0%
VEHICLE NUIS & INAPPROP VEH US	18	31	-13	-42%
Sum:	206	247	-41	-17%



Kettering Town Forum Report

William Knibb

NSIR Closing Cat. 1 Desc	No of Incidents (Oct10-Sep11)	No of Incidents (Oct09-Sep10)	+/- Incidents	% Change Incidents
AB VEH NOT STOLEN/OBSTRUCT	3	18	-15	-83%
ANIMAL RELATED INC ANTI-SOCIAL	2	3	-1	-33%
BEGGING / VAGRANCY	11	20	-9	-45%
ENV.DAMAGE/ LITTER/ NEEDLES	4	4	0	0%
FIREWORK RELATED INCIDENTS	2	1	1	100%
HATE INC (NOT NOTIFIABLE CRIME	2	0	2	0%
HOAX CALLS	12	37	-25	-68%
MALICIOUS / NUISANCE COMMS	46	67	-21	-31%
NEIGHBOURS	48	34	14	41%
NOISE	35	28	7	25%
PROSTITUTION RELATED ACTIVITY	3	0	3	0%
ROWDY OR INCONSIDERATE BEHAV	717	1094	-377	-34%
STREET DRINKING	5	9	-4	-44%
TRESPASS	1	1	0	0%
VEHICLE NUIS & INAPPROP VEH US	22	69	-47	-68%
Sum:	913	1385	-472	-34%

