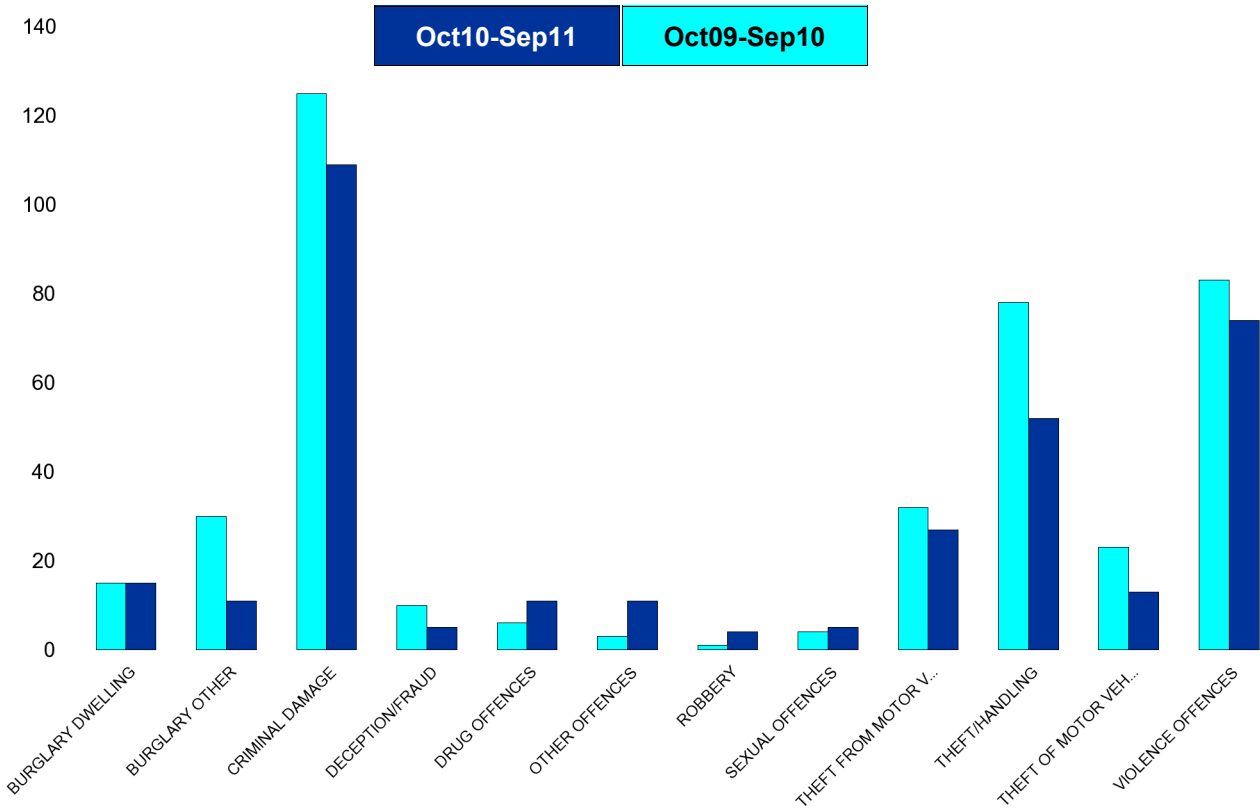


## A6 Towns Forum Report

### K006 & K007 Desborough - Crime

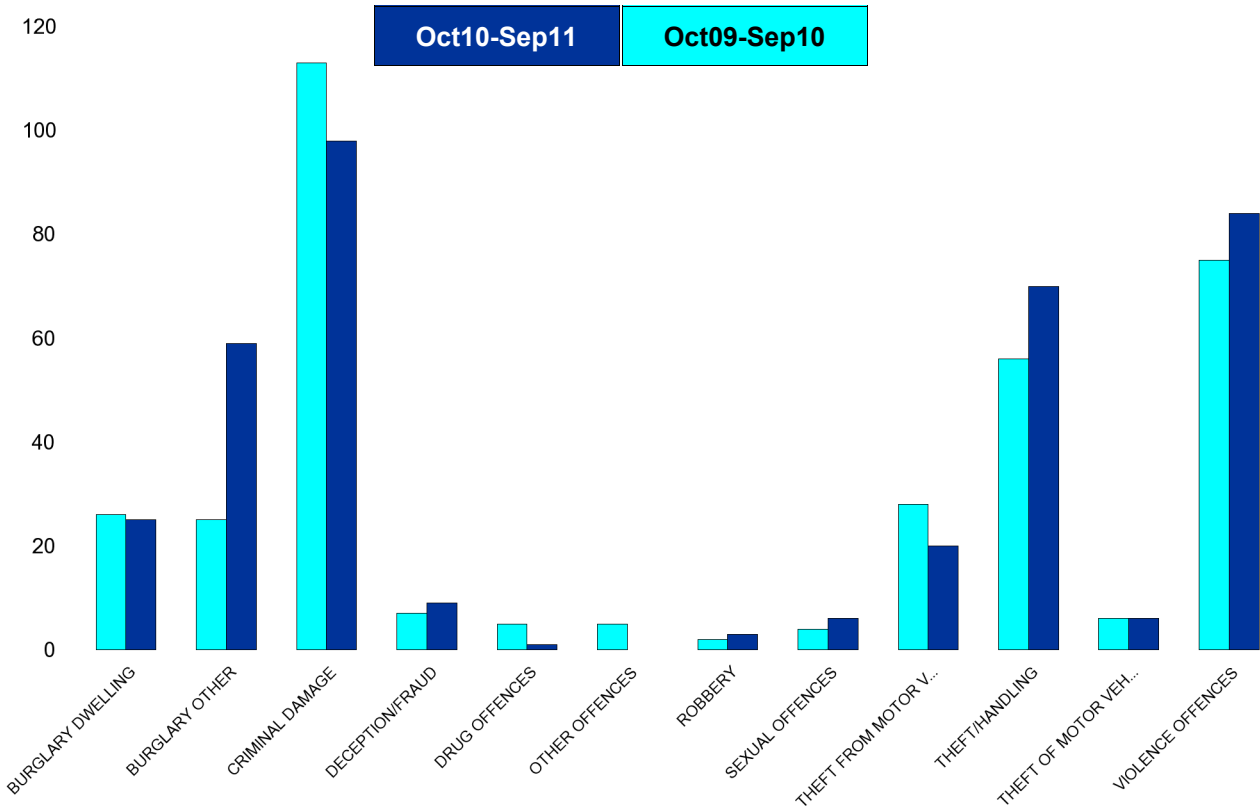
HO Group	No of Crimes (Oct10-Sep11)	No of Crimes (Oct09-Sep10)	+/- Crime	% Change	No of Cleared Up Crimes	Detection Rate (Past 12 Months)
BURGLARY DWELLING	15	15	0	0%	0	0%
BURGLARY OTHER	11	30	-19	-63%	1	9%
CRIMINAL DAMAGE	109	125	-16	-13%	7	6%
DECEPTION/FRAUD	5	10	-5	-50%	0	0%
DRUG OFFENCES	11	6	5	83%	8	73%
OTHER OFFENCES	11	3	8	267%	8	73%
ROBBERY	4	1	3	300%	0	0%
SEXUAL OFFENCES	5	4	1	25%	1	20%
THEFT FROM MOTOR VEHICLES	27	32	-5	-16%	0	0%
THEFT/HANDLING	52	78	-26	-33%	6	12%
THEFT OF MOTOR VEHICLES	13	23	-10	-43%	5	38%
VIOLENCE OFFENCES	74	83	-9	-11%	37	50%
<b>Sum:</b>	<b>337</b>	<b>410</b>	<b>-73</b>	<b>-18%</b>	<b>73</b>	<b>22%</b>



## A6 Towns Forum Report

### K012 Rothwell - Crime

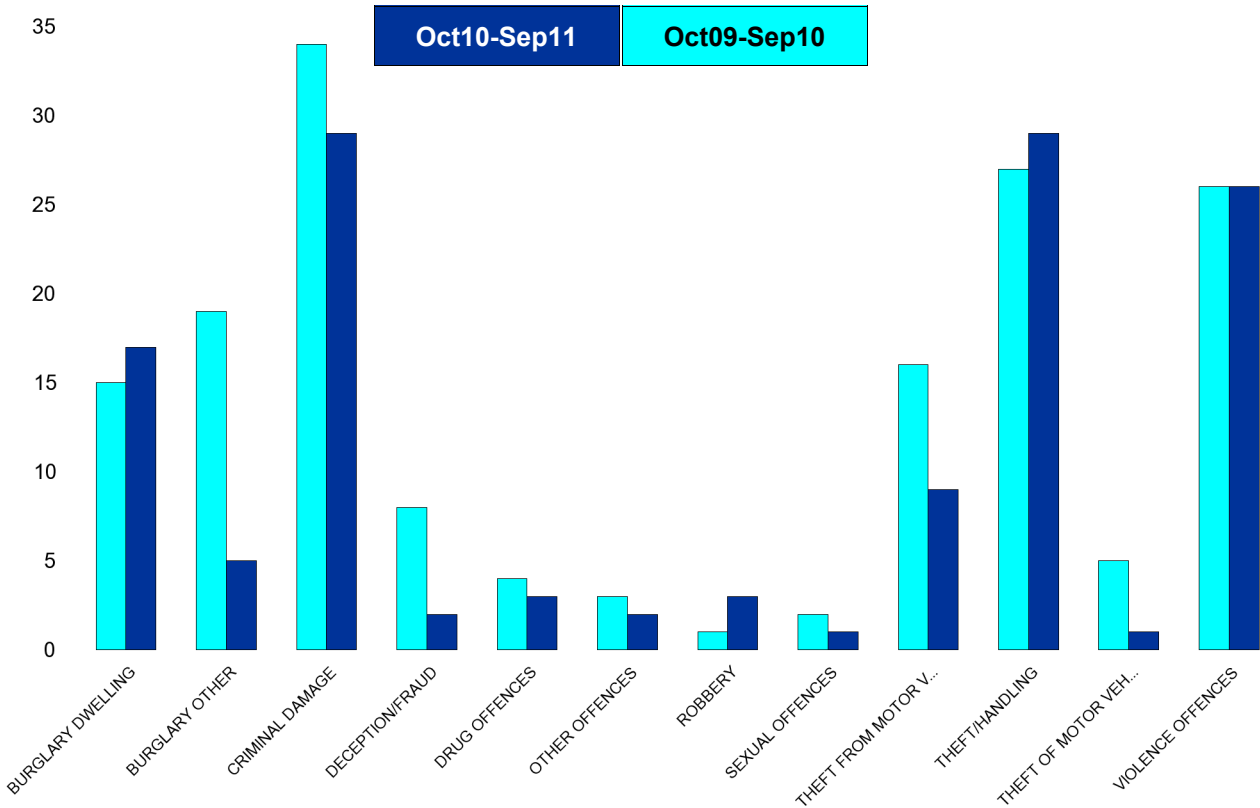
HO Group	No of Crimes (Oct10-Sep11)	No of Crimes (Oct09-Sep10)	+/- Crime	% Change	No of Cleared Up Crimes	Detection Rate (Past 12 Months)
BURGLARY DWELLING	25	26	-1	-4%	6	24%
BURGLARY OTHER	59	25	34	136%	6	10%
CRIMINAL DAMAGE	98	113	-15	-13%	19	19%
DECEPTION/FRAUD	9	7	2	29%	2	22%
DRUG OFFENCES	1	5	-4	-80%	1	100%
OTHER OFFENCES	0	5	-5	-100%	0	0%
ROBBERY	3	2	1	50%	0	0%
SEXUAL OFFENCES	6	4	2	50%	1	17%
THEFT FROM MOTOR VEHICLES	20	28	-8	-29%	1	5%
THEFT/HANDLING	70	56	14	25%	13	19%
THEFT OF MOTOR VEHICLES	6	6	0	0%	1	17%
VIOLENCE OFFENCES	84	75	9	12%	34	40%
<b>Sum:</b>	<b>381</b>	<b>352</b>	<b>29</b>	<b>8%</b>	<b>84</b>	<b>22%</b>



## A6 Towns Forum Report

### K003 Barton - Crime

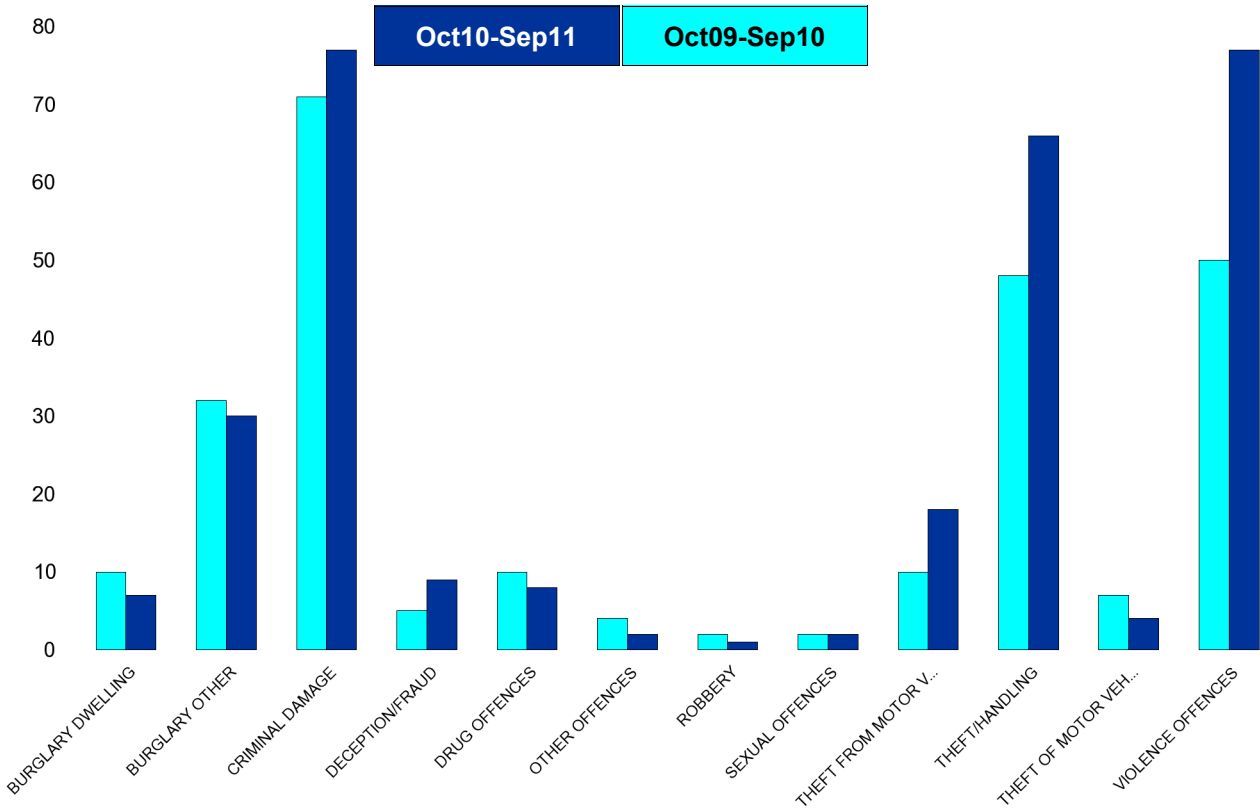
HO Group	No of Crimes (Oct10-Sep11)	No of Crimes (Oct09-Sep10)	+/- Crime	% Change	No of Cleared Up Crimes	Detection Rate (Past 12 Months)
BURGLARY DWELLING	17	15	2	13%	3	18%
BURGLARY OTHER	5	19	-14	-74%	2	40%
CRIMINAL DAMAGE	29	34	-5	-15%	2	7%
DECEPTION/FRAUD	2	8	-6	-75%	2	100%
DRUG OFFENCES	3	4	-1	-25%	3	100%
OTHER OFFENCES	2	3	-1	-33%	2	100%
ROBBERY	3	1	2	200%	1	33%
SEXUAL OFFENCES	1	2	-1	-50%	0	0%
THEFT FROM MOTOR VEHICLES	9	16	-7	-44%	0	0%
THEFT/HANDLING	29	27	2	7%	5	17%
THEFT OF MOTOR VEHICLES	1	5	-4	-80%	1	100%
VIOLENCE OFFENCES	26	26	0	0%	16	62%
<b>Sum:</b>	<b>127</b>	<b>160</b>	<b>-33</b>	<b>-21%</b>	<b>37</b>	<b>29%</b>



## A6 Towns Forum Report

### K005 Burton Latimer - Crime

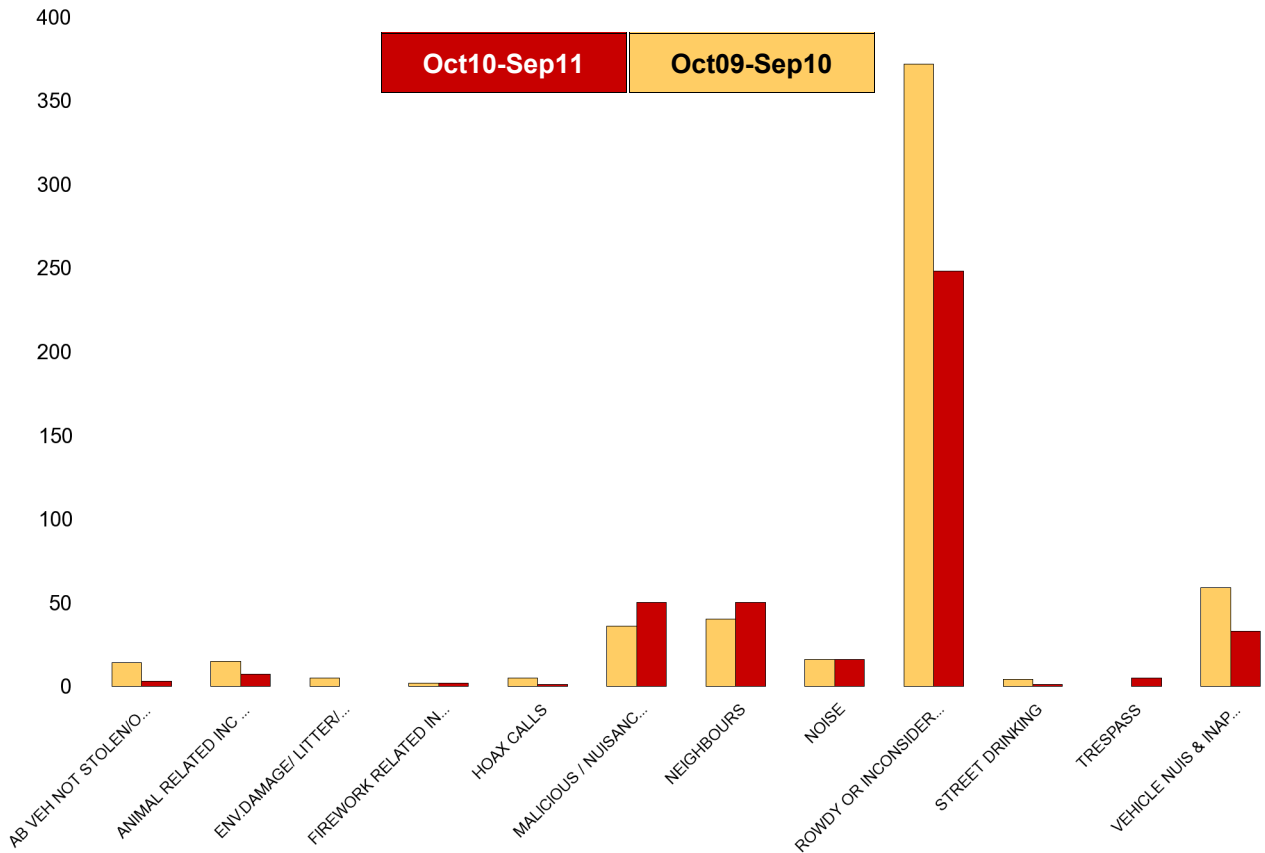
HO Group	No of Crimes (Oct10-Sep11)	No of Crimes (Oct09-Sep10)	+/- Crime	% Change	No of Cleared Up Crimes	Detection Rate (Past 12 Months)
BURGLARY DWELLING	7	10	-3	-30%	0	0%
BURGLARY OTHER	30	32	-2	-6%	16	53%
CRIMINAL DAMAGE	77	71	6	8%	15	19%
DECEPTION/FRAUD	9	5	4	80%	3	33%
DRUG OFFENCES	8	10	-2	-20%	8	100%
OTHER OFFENCES	2	4	-2	-50%	2	100%
ROBBERY	1	2	-1	-50%	1	100%
SEXUAL OFFENCES	2	2	0	0%	2	100%
THEFT FROM MOTOR VEHICLES	18	10	8	80%	2	11%
THEFT/HANDLING	66	48	18	38%	6	9%
THEFT OF MOTOR VEHICLES	4	7	-3	-43%	4	100%
VIOLENCE OFFENCES	77	50	27	54%	37	48%
<b>Sum:</b>	<b>301</b>	<b>251</b>	<b>50</b>	<b>20%</b>	<b>96</b>	<b>32%</b>



## A6 Towns Forum Report

### K006 & K007 Desborough ASB

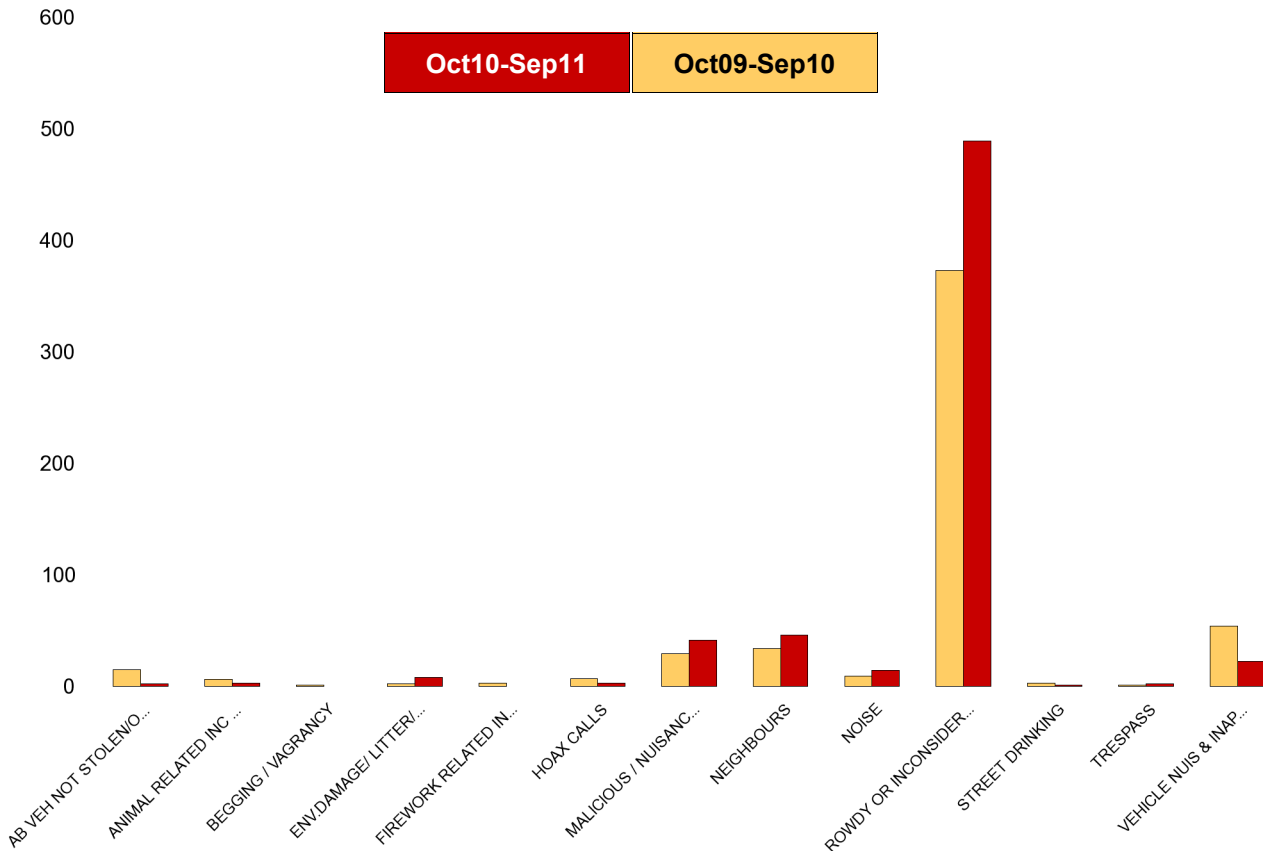
NSIR Closing Cat. 1 Desc	No of Incidents (Oct10-Sep11)	No of Incidents (Oct09-Nov10)	+/- Incidents	% Change Incidents
AB VEH NOT STOLEN/OBSTRUCT	3	14	-11	-79%
ANIMAL RELATED INC ANTI-SOCIAL	7	15	-8	-53%
ENV.DAMAGE/ LITTER/ NEEDLES	0	5	-5	-100%
FIREWORK RELATED INCIDENTS	2	2	0	0%
HOAX CALLS	1	5	-4	-80%
MALICIOUS / NUISANCE COMMS	50	36	14	39%
NEIGHBOURS	50	40	10	25%
NOISE	16	16	0	0%
ROWDY OR INCONSIDERATE BEHAV	248	372	-124	-33%
STREET DRINKING	1	4	-3	-75%
TRESPASS	5	0	5	0%
VEHICLE NUIS & INAPPROP VEH US	33	59	-26	-44%
<b>Sum:</b>	<b>416</b>	<b>568</b>	<b>-152</b>	<b>-27%</b>



# A6 Towns Forum Report

## K012 Rothwell ASB

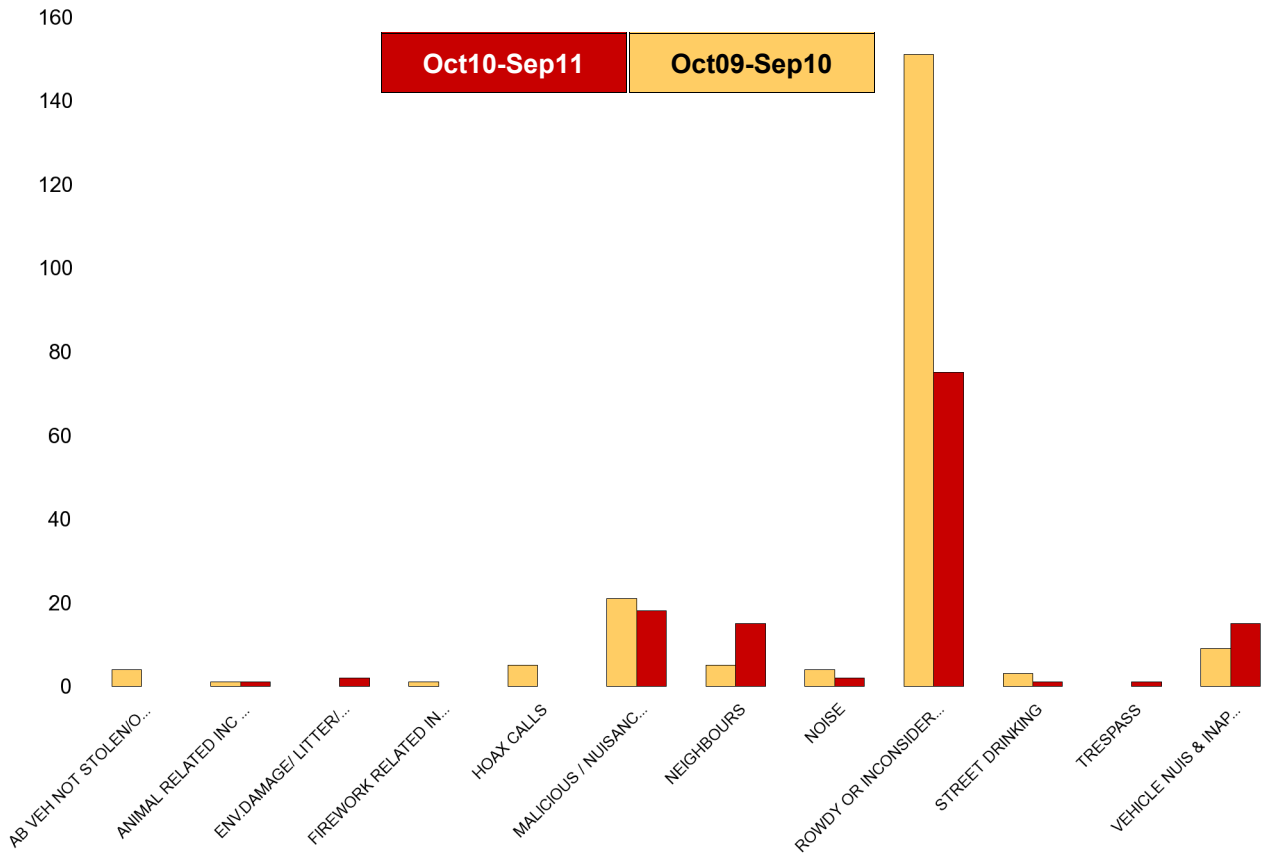
NSIR Closing Cat. 1 Desc	No of Incidents (Oct10-Sep11)	No of Incidents (Oct09-Nov10)	+/- Incidents	% Change Incidents
AB VEH NOT STOLEN/OBSTRUCT	2	15	-13	-87%
ANIMAL RELATED INC ANTI-SOCIAL	3	6	-3	-50%
BEGGING / VAGRANCY	0	1	-1	-100%
ENV.DAMAGE/ LITTER/ NEEDLES	8	2	6	300%
FIREWORK RELATED INCIDENTS	0	3	-3	-100%
HOAX CALLS	3	7	-4	-57%
MALICIOUS / NUISANCE COMMS	41	29	12	41%
NEIGHBOURS	46	34	12	35%
NOISE	14	9	5	56%
ROWDY OR INCONSIDERATE BEHAV	489	373	116	31%
STREET DRINKING	1	3	-2	-67%
TRESPASS	2	1	1	100%
VEHICLE NUIS & INAPPROP VEH US	22	54	-32	-59%
<b>Sum:</b>	<b>631</b>	<b>537</b>	<b>94</b>	<b>18%</b>



## A6 Towns Forum Report

### K003 Barton ASB

NSIR Closing Cat. 1 Desc	No of Incidents (Oct10-Sep11)	No of Incidents (Oct09-Nov10)	+/- Incidents	% Change Incidents
AB VEH NOT STOLEN/OBSTRUCT	0	4	-4	-100%
ANIMAL RELATED INC ANTI-SOCIAL	1	1	0	0%
ENV.DAMAGE/ LITTER/ NEEDLES	2	0	2	0%
FIREWORK RELATED INCIDENTS	0	1	-1	-100%
HOAX CALLS	0	5	-5	-100%
MALICIOUS / NUISANCE COMMS	18	21	-3	-14%
NEIGHBOURS	15	5	10	200%
NOISE	2	4	-2	-50%
ROWDY OR INCONSIDERATE BEHAV	75	151	-76	-50%
STREET DRINKING	1	3	-2	-67%
TRESPASS	1	0	1	0%
VEHICLE NUIS & INAPPROP VEH US	15	9	6	67%
<b>Sum:</b>	<b>130</b>	<b>204</b>	<b>-74</b>	<b>-36%</b>



## A6 Towns Forum Report

### K005 Latimer ASB

NSIR Closing Cat. 1 Desc	No of Incidents (Oct10-Sep11)	No of Incidents (Oct09-Nov10)	+/- Incidents	% Change Incidents
AB VEH NOT STOLEN/OBSTRUCT	6	14	-8	-57%
ANIMAL RELATED INC ANTI-SOCIAL	2	4	-2	-50%
BEGGING / VAGRANCY	1	0	1	0%
ENV.DAMAGE/ LITTER/ NEEDLES	4	0	4	0%
FIREWORK RELATED INCIDENTS	1	0	1	0%
HOAX CALLS	6	3	3	100%
MALICIOUS / NUISANCE COMMS	38	43	-5	-12%
NEIGHBOURS	44	29	15	52%
NOISE	16	5	11	220%
ROWDY OR INCONSIDERATE BEHAV	183	225	-42	-19%
STREET DRINKING	2	2	0	0%
VEHICLE NUIS & INAPPROP VEH US	13	43	-30	-70%
<b>Sum:</b>	<b>316</b>	<b>368</b>	<b>-52</b>	<b>-14%</b>

