

Crime Analysis

Kettering Town & Rural % Split

ALL CRIME

SCT Desc (PLC)	No of Crimes 200809	%	No of Crimes 200910	%	No of Crimes 2001011	%	No of Crimes 2001112 YTD	%
Kettering Town	5304	74%	5208	75%	4521	73%	1421	73%
Kettering Rural	1912	26%	1738	25%	1641	27%	530	27%
Sum:	7216		6946		6162		1951	

BURGLARY DWELLING

SCT Desc (PLC)	No of Crimes 200809	%	No of Crimes 200910	%	No of Crimes 2001011	%	No of Crimes 2001112 YTD	%
Kettering Town	237	70%	279	74%	241	72%	42	61%
Kettering Rural	101	30%	99	26%	94	28%	27	39%
Sum:	338		378		335		69	

BURGLARY OTHER

SCT Desc (PLC)	No of Crimes 200809	%	No of Crimes 200910	%	No of Crimes 2001011	%	No of Crimes 2001112 YTD	%
Kettering Town	323	62%	267	60%	187	54%	71	57%
Kettering Rural	194	38%	179	40%	161	46%	54	43%
Sum:	517		446		348		125	

Crime Analysis

Kettering Town & Rural % Split

CRIMINAL DAMAGE

SCT Desc (PLC)	No of Crimes 200809	%	No of Crimes 200910	%	No of Crimes 2001011	%	No of Crimes 2001112 YTD	%
Kettering Town	1168	68%	1095	71%	858	69%	259	66%
Kettering Rural	541	32%	439	29%	391	31%	132	34%
Sum:	1709		1534		1249		391	

DECEPTION/FRAUD

SCT Desc (PLC)	No of Crimes 200809	%	No of Crimes 200910	%	No of Crimes 2001011	%	No of Crimes 2001112 YTD	%
Kettering Town	228	71%	200	81%	236	82%	59	82%
Kettering Rural	94	29%	48	19%	51	18%	13	18%
Sum:	322		248		287		72	

DRUG OFFENCES

SCT Desc (PLC)	No of Crimes 200809	%	No of Crimes 200910	%	No of Crimes 2001011	%	No of Crimes 2001112 YTD	%
Kettering Town	151	83%	171	81%	204	85%	60	87%
Kettering Rural	31	17%	41	19%	37	15%	9	13%
Sum:	182		212		241		69	

Crime Analysis

Kettering Town & Rural % Split

OTHER OFFENCES

SCT Desc (PLC)	No of Crimes 200809	%	No of Crimes 200910	%	No of Crimes 2001011	%	No of Crimes 2001112 YTD	%
Kettering Town	77	84%	100	81%	67	78%	23	85%
Kettering Rural	15	16%	24	19%	19	22%	4	15%
Sum:	92		124		86		27	

ROBBERY

SCT Desc (PLC)	No of Crimes 200809	%	No of Crimes 200910	%	No of Crimes 2001011	%	No of Crimes 2001112 YTD	%
Kettering Town	80	78%	69	91%	70	86%	17	71%
Kettering Rural	22	22%	7	9%	11	14%	7	29%
Sum:	102		76		81		24	

SEXUAL OFFENCES

SCT Desc (PLC)	No of Crimes 200809	%	No of Crimes 200910	%	No of Crimes 2001011	%	No of Crimes 2001112 YTD	%
Kettering Town	54	81%	71	89%	65	80%	28	76%
Kettering Rural	13	19%	9	11%	16	20%	9	24%
Sum:	67		80		81		37	

Crime Analysis

Kettering Town & Rural % Split

THEFT FROM MOTOR VEHICLES

SCT Desc (PLC)	No of Crimes 200809	%	No of Crimes 200910	%	No of Crimes 2001011	%	No of Crimes 2001112 YTD	%
Kettering Town	527	71%	351	71%	268	56%	75	72%
Kettering Rural	218	29%	145	29%	207	44%	29	28%
Sum:	745		496		475		104	

THEFT/HANDLING

SCT Desc (PLC)	No of Crimes 200809	%	No of Crimes 200910	%	No of Crimes 2001011	%	No of Crimes 2001112 YTD	%
Kettering Town	1281	79%	1449	79%	1222	81%	431	78%
Kettering Rural	334	21%	392	21%	288	19%	119	22%
Sum:	1615		1841		1510		550	

THEFT OF MOTOR VEHICLES

SCT Desc (PLC)	No of Crimes 200809	%	No of Crimes 200910	%	No of Crimes 2001011	%	No of Crimes 2001112 YTD	%
Kettering Town	241	72%	172	75%	107	64%	42	81%
Kettering Rural	95	28%	56	25%	61	36%	10	19%
Sum:	336		228		168		52	

Crime Analysis

Kettering Town & Rural % Split

VIOLENCE OFFENCES

SCT Desc (PLC)	No of Crimes 200809	%	No of Crimes 200910	%	No of Crimes 2001011	%	No of Crimes 2001112 YTD	%
Kettering Town	937	79%	984	77%	996	77%	314	73%
Kettering Rural	254	21%	299	23%	305	23%	117	27%
Sum:	1191		1283		1301		431	

Crime Analysis

A6 Towns % Split

ALL CRIME

Ward Desc (PLC)	No of Crimes 200809	%	No of Crimes 200910	%	No of Crimes 2001011	%	No of Crimes 2001112 YTD	%
Barton	211	15%	146	12%	143	13%	45	11%
Burton Latimer	338	24%	287	23%	251	23%	116	29%
Desborough Loatland	180	13%	197	16%	154	14%	41	10%
Desborough St Giles	191	14%	215	17%	221	20%	59	15%
Rothwell	478	34%	409	33%	346	31%	139	35%
Sum:	1398		1254		1115		400	

BURGLARY DWELLING

Ward Code & Desc	No of Crimes 200809	%	No of Crimes 200910	%	No of Crimes 2001011	%	No of Crimes 2001112 YTD	%
K003 Barton	12	16%	11	19%	17	24%	6	30%
K005 Burton Latimer	19	26%	13	22%	9	13%		N/A
K006 Desborough Loatland	10	14%	6	10%	5	7%	2	10%
K007 Desborough St Giles	7	10%	2	3%	16	23%	2	10%
K012 Rothwell	25	34%	26	45%	23	33%	10	50%
Sum:	73		58		70		20	

Crime Analysis

A6 Towns % Split

BURGLARY OTHER

Ward Code & Desc	No of Crimes 200809	%	No of Crimes 200910	%	No of Crimes 2001011	%	No of Crimes 2001112 YTD	%
K003 Barton	12	13%	17	17%	12	12%	3	8%
K005 Burton Latimer	20	21%	28	27%	35	34%	6	15%
K006 Desborough Loatland	7	7%	10	10%	12	12%	1	3%
K007 Desborough St Giles	18	19%	19	18%	8	8%	1	3%
K012 Rothwell	37	39%	29	28%	37	36%	28	72%
Sum:	94		103		104		39	

CRIMINAL DAMAGE

Ward Code & Desc	No of Crimes 200809	%	No of Crimes 200910	%	No of Crimes 2001011	%	No of Crimes 2001112 YTD	%
K003 Barton	60	14%	38	11%	25	8%	9	8%
K005 Burton Latimer	104	24%	76	22%	71	23%	41	36%
K006 Desborough Loatland	54	12%	45	13%	36	12%	10	9%
K007 Desborough St Giles	58	13%	66	19%	78	25%	18	16%
K012 Rothwell	158	36%	127	36%	103	33%	35	31%
Sum:	434		352		313		113	

Crime Analysis

A6 Towns % Split

DECEPTION/FRAUD

Ward Code & Desc	No of Crimes 200809	%	No of Crimes 200910	%	No of Crimes 2001011	%	No of Crimes 2001112 YTD	%
K003 Barton	20	37%	5	25%	6	23%	1	11%
K005 Burton Latimer	6	11%	5	25%	4	15%	4	44%
K006 Desborough Loatland	4	7%	4	20%	2	8%	2	22%
K007 Desborough St Giles	5	9%	2	10%	4	15%	0	0%
K012 Rothwell	19	35%	4	20%	10	38%	2	22%
Sum:	54		20		26		9	

DRUG OFFENCES

Ward Code & Desc	No of Crimes 200809	%	No of Crimes 200910	%	No of Crimes 2001011	%	No of Crimes 2001112 YTD	%
K003 Barton	3	14%	3	11%	4	15%	2	40%
K005 Burton Latimer	10	45%	5	18%	12	44%	2	40%
K006 Desborough Loatland	2	9%	4	14%	1	4%		N/A
K007 Desborough St Giles	2	9%	7	25%	8	30%	1	20%
K012 Rothwell	5	23%	9	32%	2	7%		N/A
Sum:	22		28		27		5	

Crime Analysis

A6 Towns % Split

OTHER OFFENCES

Ward Code & Desc	No of Crimes 200809	%	No of Crimes 200910	%	No of Crimes 2001011	%	No of Crimes 2001112 YTD	%
K003 Barton	2	15%	1	5%	4	31%		N/A
K005 Burton Latimer	4	31%	8	40%	1	8%		N/A
K006 Desborough Loatland	1	8%	1	5%	2	15%	3	75%
K007 Desborough St Giles	1	8%	3	15%	4	31%	1	25%
K012 Rothwell	5	38%	7	35%	2	15%		N/A
Sum:	13		20		13		4	

ROBBERY

Ward Code & Desc	No of Crimes 200809	%	No of Crimes 200910	%	No of Crimes 2001011	%	No of Crimes 2001112 YTD	%
K003 Barton	2	12%		N/A	3	38%	1	17%
K005 Burton Latimer	9	53%	2	33%	1	13%	1	17%
K006 Desborough Loatland	2	12%	1	17%	2	25%	1	17%
K007 Desborough St Giles	2	12%	1	17%		N/A	1	17%
K012 Rothwell	2	12%	2	33%	2	25%	2	33%
Sum:	17		6		8		6	

Crime Analysis

A6 Towns % Split

SEXUAL OFFENCES

Ward Code & Desc	No of Crimes 200809	%	No of Crimes 200910	%	No of Crimes 2001011	%	No of Crimes 2001112 YTD	%
K003 Barton	3	23%	1	13%	1	11%	1	11%
K005 Burton Latimer	2	15%	0	0%	2	22%	1	11%
K006 Desborough Loatland	2	15%		N/A	1	11%	2	22%
K007 Desborough St Giles	2	15%	3	38%	1	11%	1	11%
K012 Rothwell	4	31%	4	50%	4	44%	4	44%
Sum:	13		8		9		9	

THEFT FROM MOTOR VEHICLES

Ward Code & Desc	No of Crimes 200809	%	No of Crimes 200910	%	No of Crimes 2001011	%	No of Crimes 2001112 YTD	%
K003 Barton	28	19%	20	20%	10	14%	3	14%
K005 Burton Latimer	34	23%	17	17%	8	11%	5	23%
K006 Desborough Loatland	11	7%	18	18%	15	21%	6	27%
K007 Desborough St Giles	28	19%	15	15%	14	20%	3	14%
K012 Rothwell	49	33%	32	31%	24	34%	5	23%
Sum:	150		102		71		22	

Crime Analysis

A6 Towns % Split

THEFT/HANDLING

Ward Code & Desc	No of Crimes 200809	%	No of Crimes 200910	%	No of Crimes 2001011	%	No of Crimes 2001112 YTD	%
K003 Barton	32	13%	18	7%	31	16%	7	9%
K005 Burton Latimer	69	28%	70	26%	47	24%	26	35%
K006 Desborough Loatland	42	17%	61	23%	32	17%	9	12%
K007 Desborough St Giles	25	10%	45	17%	26	14%	10	14%
K012 Rothwell	81	33%	71	27%	56	29%	22	30%
Sum:	249		265		192		74	

THEFT OF MOTOR VEHICLES

Ward Code & Desc	No of Crimes 200809	%	No of Crimes 200910	%	No of Crimes 2001011	%	No of Crimes 2001112 YTD	%
K003 Barton	9	13%	6	17%	2	6%	1	17%
K005 Burton Latimer	12	18%	7	19%	3	10%	0	0%
K006 Desborough Loatland	11	16%	8	22%	12	39%		N/A
K007 Desborough St Giles	14	21%	8	22%	6	19%	4	67%
K012 Rothwell	22	32%	7	19%	8	26%	1	17%
Sum:	68		36		31		6	

Crime Analysis

A6 Towns % Split

VIOLENCE OFFENCES

Ward Code & Desc	No of Crimes 200809	%	No of Crimes 200910	%	No of Crimes 2001011	%	No of Crimes 2001112 YTD	%
K003 Barton	28	13%	26	10%	28	11%	11	12%
K005 Burton Latimer	49	23%	56	22%	58	23%	30	32%
K006 Desborough Loatland	34	16%	39	15%	34	14%	5	5%
K007 Desborough St Giles	29	14%	44	17%	56	22%	17	18%
K012 Rothwell	71	34%	91	36%	75	30%	30	32%
Sum:	211		256		251		93	

Crime Analysis

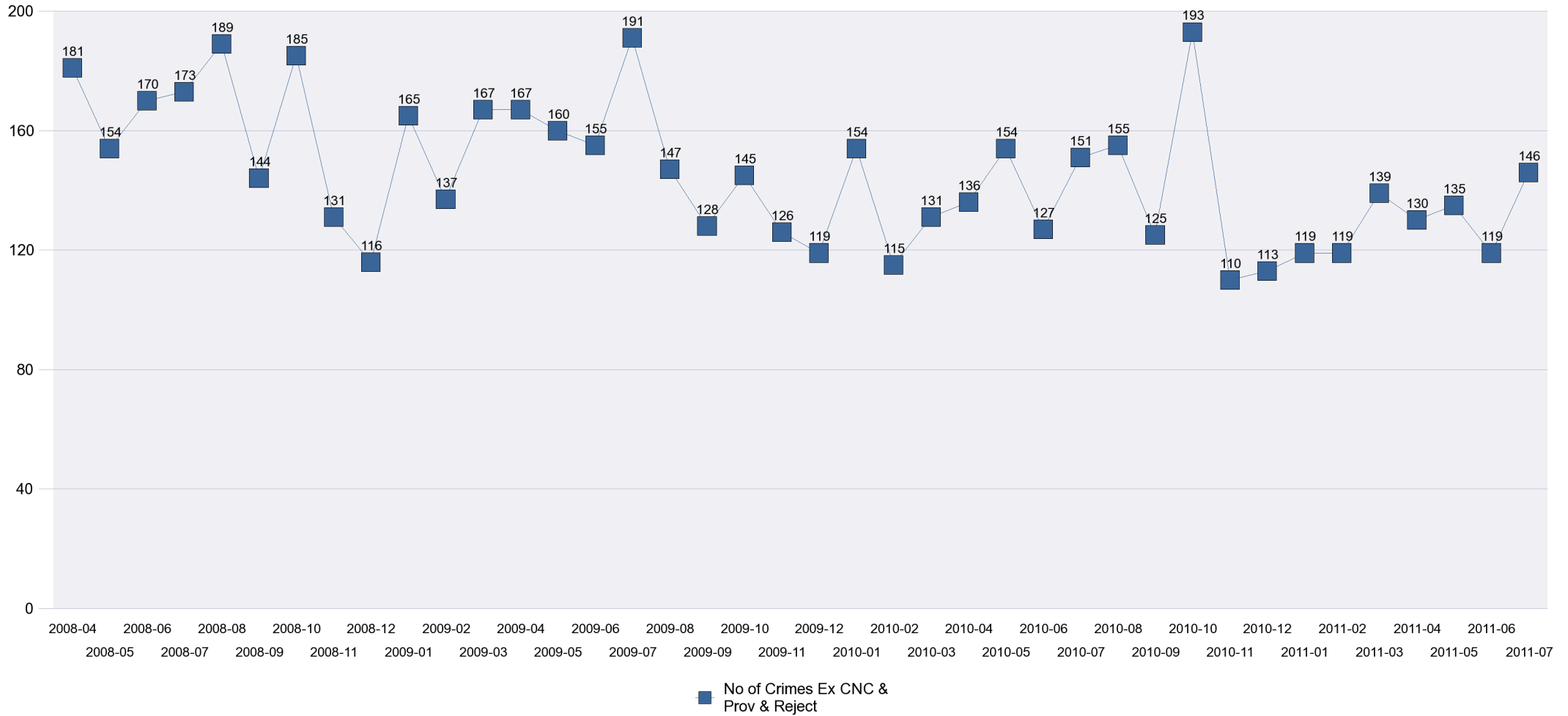
Kettering Rural

HO Group	No of Crimes 200809	No of Crimes 200910	% Change for 0910	No of Crimes 201011	% Change for 1011	No of Crimes 201112 YTD	% Change for 1112 YTD
BURGLARY DWELLING	101	99	-2%	94	-5%	27	-13%
BURGLARY OTHER	194	179	-8%	161	-10%	54	-23%
CRIMINAL DAMAGE	541	439	-19%	391	-11%	132	-10%
DECEPTION/FRAUD	94	48	-49%	51	6%	13	-41%
DRUG OFFENCES	31	41	32%	37	-10%	9	0%
OTHER OFFENCES	15	24	60%	19	-21%	4	-33%
ROBBERY	22	7	-68%	11	57%	7	75%
SEXUAL OFFENCES	13	9	-31%	16	78%	9	-25%
THEFT FROM MOTOR VEHICLES	218	145	-33%	207	43%	29	-19%
THEFT/HANDLING	334	392	17%	288	-27%	119	12%
THEFT OF MOTOR VEHICLES	95	56	-41%	61	9%	10	-50%
VIOLENCE OFFENCES	254	299	18%	305	2%	117	11%
Sum:	1912	1738	-9%	1641	-6%	530	-7%

Crime Analysis

Kettering Rural

All Crime by Month



Crime Analysis

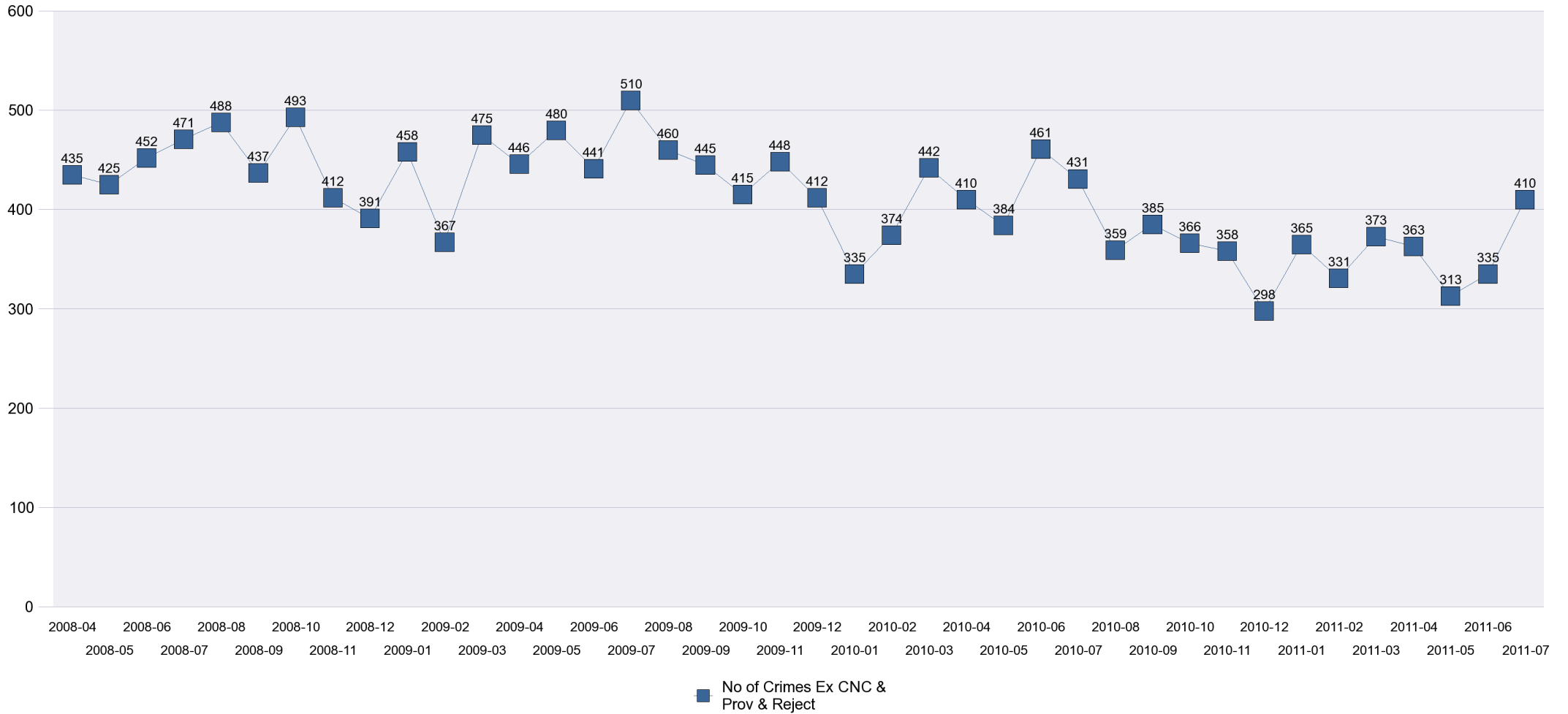
Kettering Town

HO Group	No of Crimes 200809	No of Crimes 200910	% Change for 0910	No of Crimes 2001011	% Change for 1011	No of Crimes 2001112 YTD	% Change for 1112 YTD
BURGLARY DWELLING	237	279	18%	241	-14%	42	-59%
BURGLARY OTHER	323	267	-17%	187	-30%	71	-30%
CRIMINAL DAMAGE	1168	1095	-6%	858	-22%	259	-22%
DECEPTION/FRAUD	228	200	-12%	236	18%	59	-34%
DRUG OFFENCES	151	171	13%	204	19%	60	-22%
OTHER OFFENCES	77	100	30%	67	-33%	23	-8%
ROBBERY	80	69	-14%	70	1%	17	-11%
SEXUAL OFFENCES	54	71	31%	65	-8%	28	27%
THEFT FROM MOTOR VEHICLES	527	351	-33%	268	-24%	75	-16%
THEFT/HANDLING	1281	1449	13%	1222	-16%	431	-3%
THEFT OF MOTOR VEHICLES	241	172	-29%	107	-38%	42	-5%
VIOLENCE OFFENCES	937	984	5%	996	1%	314	-8%
Sum:	5304	5208	-2%	4521	-13%	1421	-16%

Crime Analysis

Kettering Town

All Crime by Month



Crime Analysis

Kettering Wards

K001 All Saints

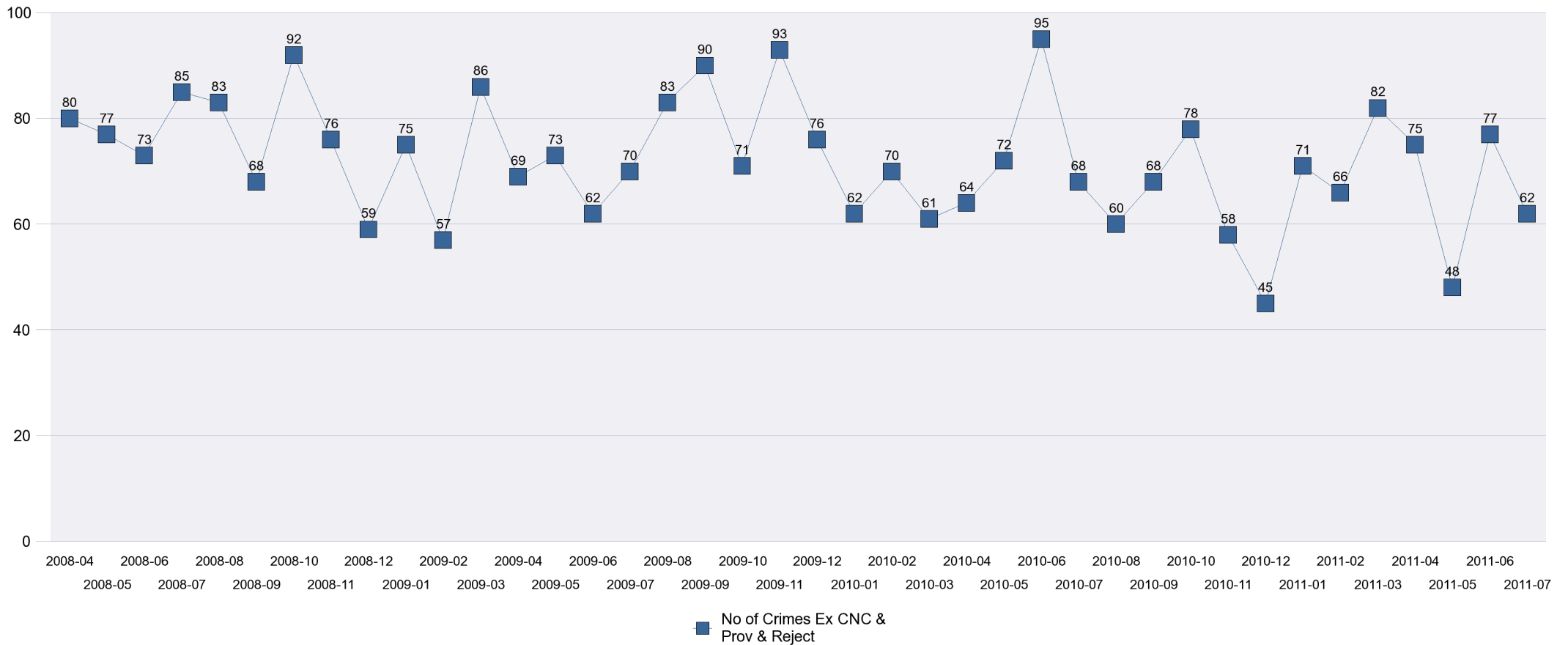
HO Group	No of Crimes 200809	No of Crimes 200910	% Change for 0910	No of Crimes 2001011	% Change for 1011	No of Crimes 2001112 YTD	% Change for 1112 YTD
BURGLARY DWELLING	45	49	9%	40	-18%	14	-18%
BURGLARY OTHER	39	30	-23%	29	-3%	31	72%
CRIMINAL DAMAGE	232	236	2%	191	-19%	52	-28%
DECEPTION/FRAUD	10	18	80%	14	-22%	6	-14%
DRUG OFFENCES	15	35	133%	55	57%	8	-50%
OTHER OFFENCES	21	16	-24%	14	-13%	1	-75%
ROBBERY	18	19	6%	18	-5%	2	-67%
SEXUAL OFFENCES	12	16	33%	10	-38%	6	100%
THEFT FROM MOTOR VEHICLES	112	60	-46%	54	-10%	20	33%
THEFT/HANDLING	149	180	21%	173	-4%	60	-2%
THEFT OF MOTOR VEHICLES	58	40	-31%	27	-33%	8	-27%
VIOLENCE OFFENCES	200	181	-10%	202	12%	54	-22%
Sum:	911	880	-3%	827	-6%	262	-12%

Crime Analysis

Kettering Wards

K001 All Saints

All Crime by Month



Crime Analysis

Kettering Wards

K002 Avondale Grange

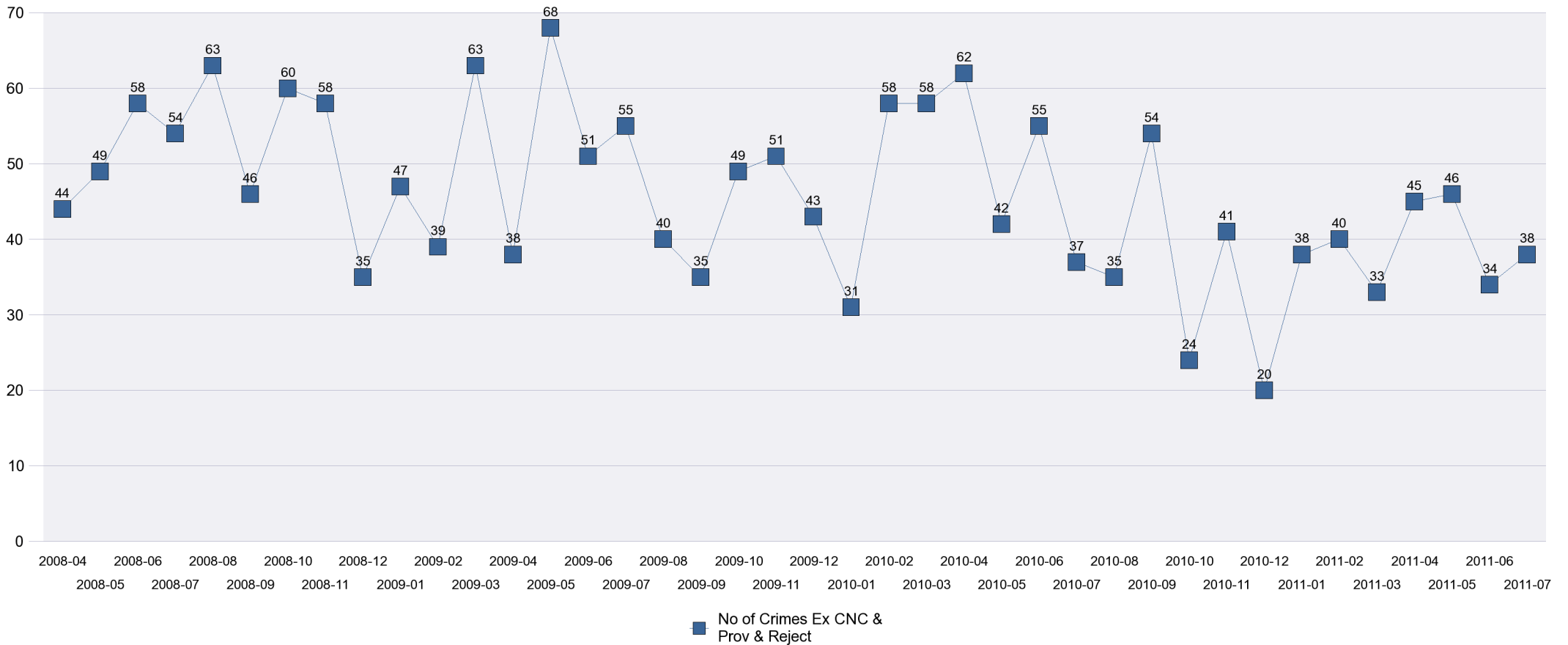
HO Group	No of Crimes 200809	No of Crimes 200910	% Change for 0910	No of Crimes 2001011	% Change for 1011	No of Crimes 2001112 YTD	% Change for 1112 YTD
BURGLARY DWELLING	37	53	43%	49	-8%	9	-63%
BURGLARY OTHER	33	47	42%	33	-30%	13	-32%
CRIMINAL DAMAGE	169	134	-21%	105	-22%	31	-33%
DECEPTION/FRAUD	3	7	133%	5	-29%	3	200%
DRUG OFFENCES	16	12	-25%	18	50%	11	57%
OTHER OFFENCES	6	4	-33%	1	-75%	1	N/A
ROBBERY	11	10	-9%	6	-40%	0	-100%
SEXUAL OFFENCES	7	5	-29%	11	120%	6	20%
THEFT FROM MOTOR VEHICLES	33	28	-15%	20	-29%	7	-13%
THEFT/HANDLING	121	141	17%	109	-23%	31	-16%
THEFT OF MOTOR VEHICLES	40	21	-48%	14	-33%	4	33%
VIOLENCE OFFENCES	140	115	-18%	110	-4%	47	4%
Sum:	616	577	-6%	481	-17%	163	-17%

Crime Analysis

Kettering Wards

K002 Avondale Grange

All Crime by Month



Crime Analysis

Kettering Wards

K003 Barton

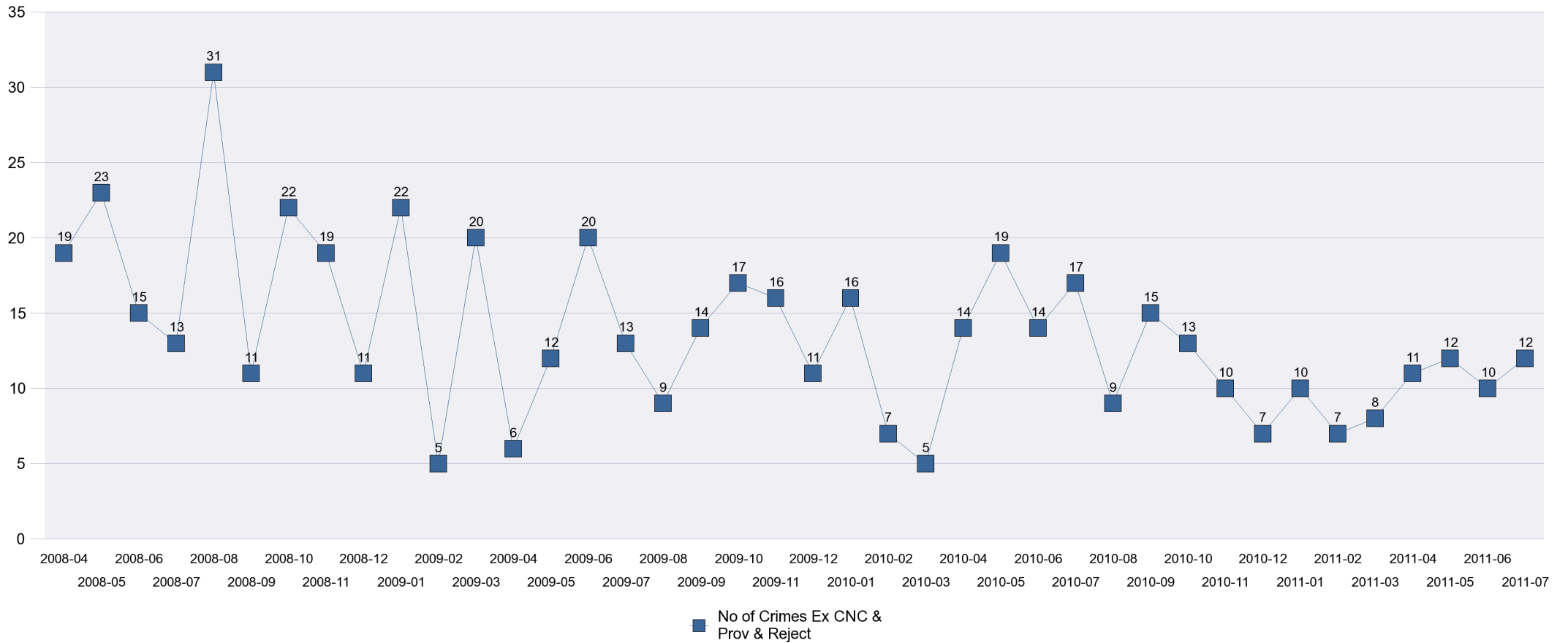
HO Group	No of Crimes 200809	No of Crimes 200910	% Change for 0910	No of Crimes 2001011	% Change for 1011	No of Crimes 2001112 YTD	% Change for 1112 YTD
BURGLARY DWELLING	12	11	-8%	17	55%	6	20%
BURGLARY OTHER	12	17	42%	12	-29%	3	-67%
CRIMINAL DAMAGE	60	38	-37%	25	-34%	9	-10%
DECEPTION/FRAUD	20	5	-75%	6	20%	1	-80%
DRUG OFFENCES	3	3	0%	4	33%	2	0%
OTHER OFFENCES	2	1	-50%	4	300%	0	-100%
ROBBERY	2	0	-100%	3	N/A	1	0%
SEXUAL OFFENCES	3	1	-67%	1	0%	1	0%
THEFT FROM MOTOR VEHICLES	28	20	-29%	10	-50%	3	50%
THEFT/HANDLING	32	18	-44%	31	72%	7	-46%
THEFT OF MOTOR VEHICLES	9	6	-33%	2	-67%	1	0%
VIOLENCE OFFENCES	28	26	-7%	28	8%	11	-15%
Sum:	211	146	-31%	143	-2%	45	-30%

Crime Analysis

Kettering Wards

K003 Barton

All Crime by Month



Crime Analysis

Kettering Wards

K004 Brambleside

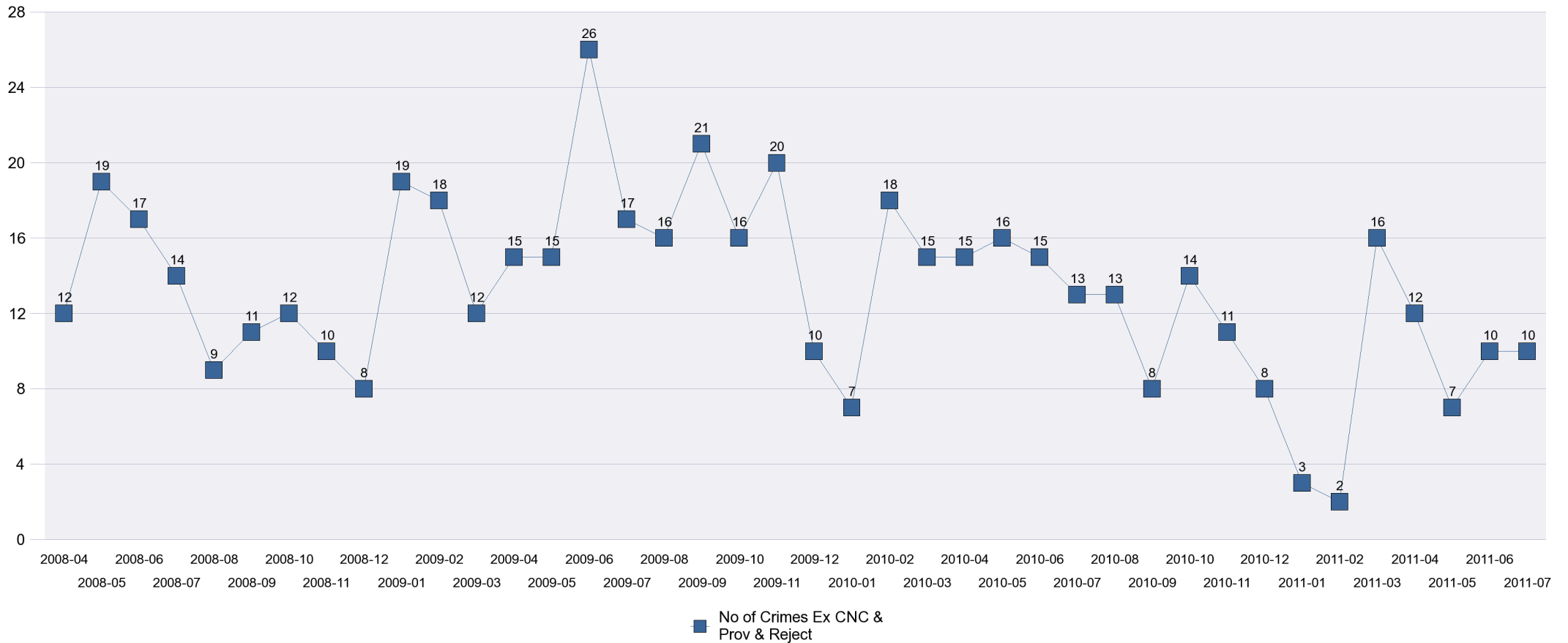
HO Group	No of Crimes 200809	No of Crimes 200910	% Change for 0910	No of Crimes 2001011	% Change for 1011	No of Crimes 2001112 YTD	% Change for 1112 YTD
BURGLARY DWELLING	13	22	69%	8	-64%	3	0%
BURGLARY OTHER	15	19	27%	11	-42%	1	-83%
CRIMINAL DAMAGE	44	31	-30%	31	0%	6	-67%
DECEPTION/FRAUD	1	2	100%	2	0%	1	0%
DRUG OFFENCES	2	3	50%	4	33%	1	0%
OTHER OFFENCES	0	1	N/A	1	0%	1	N/A
ROBBERY	1	1	0%	2	100%	1	0%
SEXUAL OFFENCES	3	1	-67%	1	0%	0	-100%
THEFT FROM MOTOR VEHICLES	33	20	-39%	21	5%	9	350%
THEFT/HANDLING	22	49	123%	24	-51%	8	-27%
THEFT OF MOTOR VEHICLES	5	8	60%	6	-25%	0	-100%
VIOLENCE OFFENCES	22	39	77%	23	-41%	8	-27%
Sum:	161	196	22%	134	-32%	39	-34%

Crime Analysis

Kettering Wards

K004 Brambleside

All Crime by Month



Crime Analysis

Kettering Wards

K005 Burton Latimer

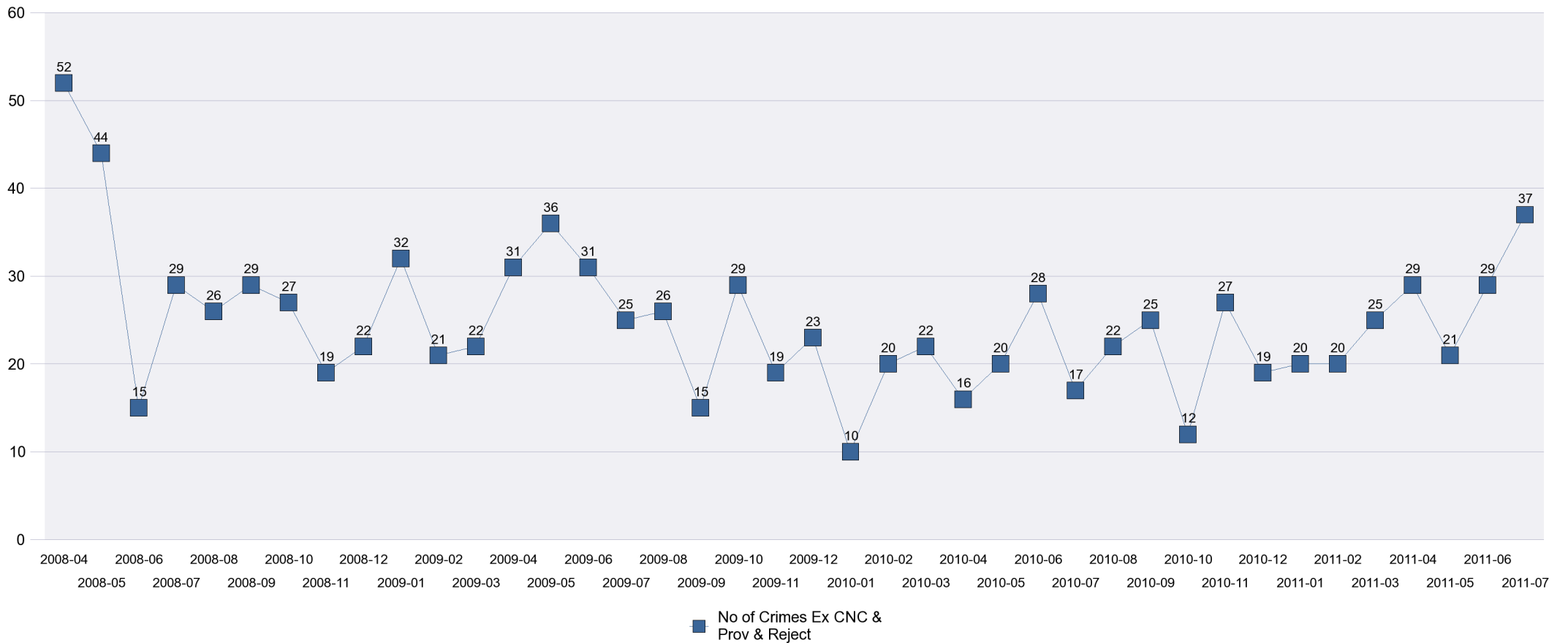
HO Group	No of Crimes 200809	No of Crimes 200910	% Change for 0910	No of Crimes 2001011	% Change for 1011	No of Crimes 2001112 YTD	% Change for 1112 YTD
BURGLARY DWELLING	19	13	-32%	9	-31%	0	-100%
BURGLARY OTHER	20	28	40%	35	25%	6	-50%
CRIMINAL DAMAGE	104	76	-27%	71	-7%	41	46%
DECEPTION/FRAUD	6	5	-17%	4	-20%	4	N/A
DRUG OFFENCES	10	5	-50%	12	140%	2	100%
OTHER OFFENCES	4	8	100%	1	-88%	0	N/A
ROBBERY	9	2	-78%	1	-50%	1	0%
SEXUAL OFFENCES	2	0	-100%	2	#DIV/0	1	-50%
THEFT FROM MOTOR VEHICLES	34	17	-50%	8	-53%	5	150%
THEFT/HANDLING	69	70	1%	47	-33%	26	53%
THEFT OF MOTOR VEHICLES	12	7	-42%	3	-57%	0	N/A
VIOLENCE OFFENCES	49	56	14%	58	4%	30	88%
Sum:	338	287	-15%	251	-13%	116	43%

Crime Analysis

Kettering Wards

K005 Burton Latimer

All Crime by Month



Crime Analysis

Kettering Wards

K006 Desborough Loatland

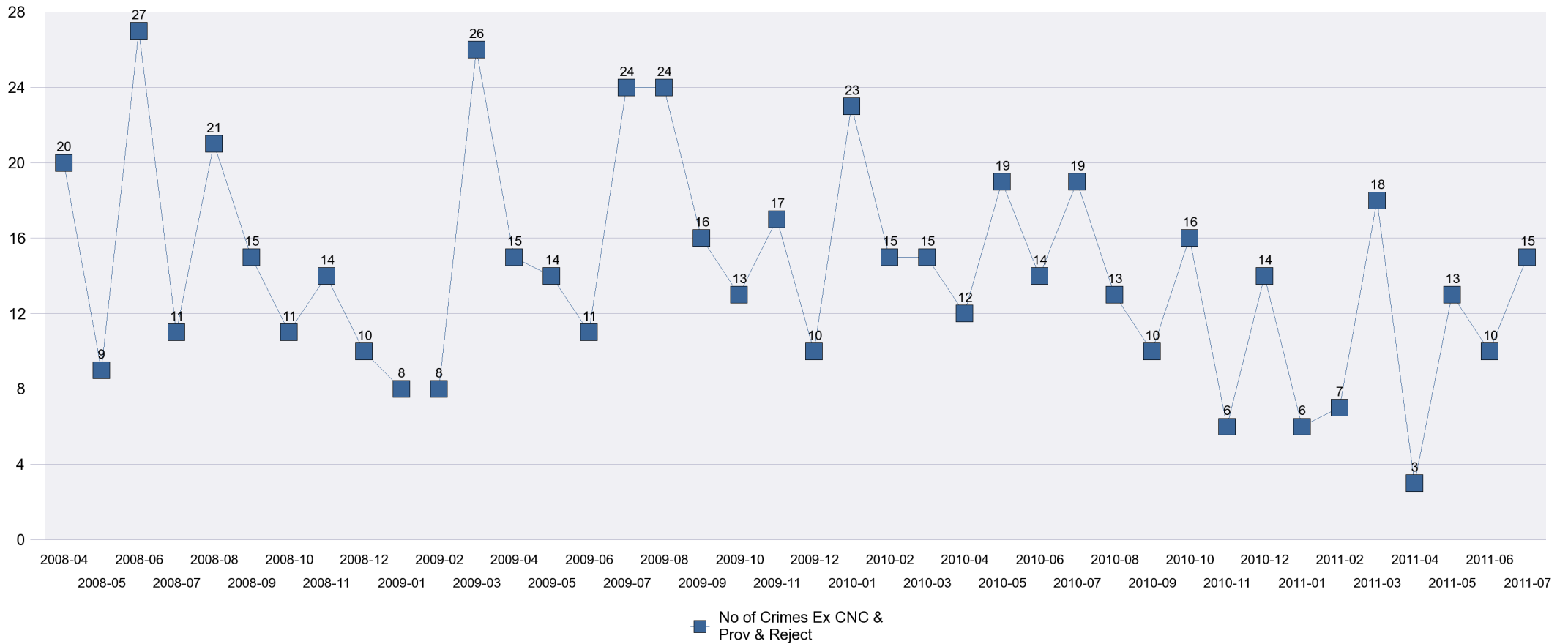
HO Group	No of Crimes 200809	No of Crimes 200910	% Change for 0910	No of Crimes 2001011	% Change for 1011	No of Crimes 2001112 YTD	% Change for 1112 YTD
BURGLARY DWELLING	10	6	-40%	5	-17%	2	-33%
BURGLARY OTHER	7	10	43%	12	20%	1	-80%
CRIMINAL DAMAGE	54	45	-17%	36	-20%	10	-41%
DECEPTION/FRAUD	4	4	0%	2	-50%	2	100%
DRUG OFFENCES	2	4	100%	1	-75%	0	N/A
OTHER OFFENCES	1	1	0%	2	100%	3	N/A
ROBBERY	2	1	-50%	2	100%	1	N/A
SEXUAL OFFENCES	2	0	-100%	1	N/A	2	100%
THEFT FROM MOTOR VEHICLES	11	18	64%	15	-17%	6	50%
THEFT/HANDLING	42	61	45%	32	-48%	9	-44%
THEFT OF MOTOR VEHICLES	11	8	-27%	12	50%	0	-100%
VIOLENCE OFFENCES	34	39	15%	34	-13%	5	-55%
Sum:	180	197	9%	154	-22%	41	-36%

Crime Analysis

Kettering Wards

K006 Desborough Loatland

All Crime by Month



Crime Analysis

Kettering Wards

K007 Desborough St Giles

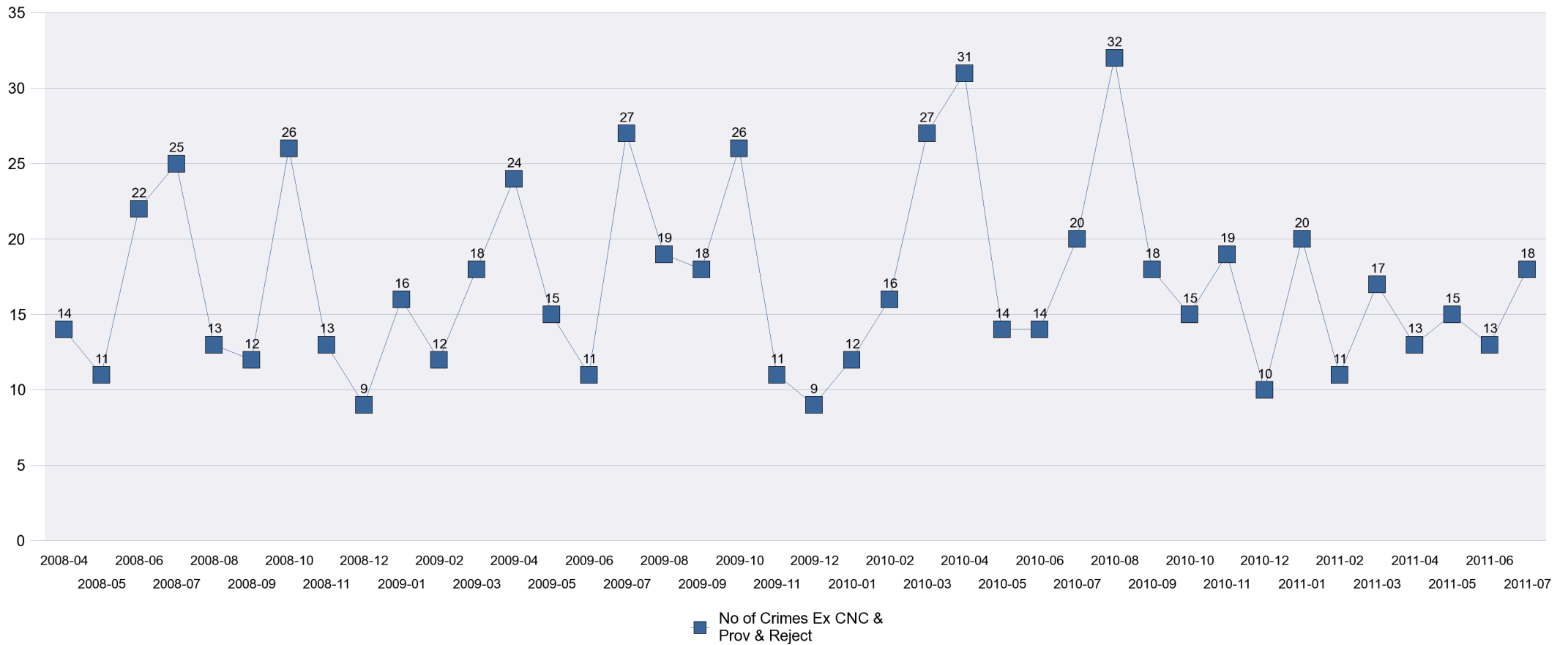
HO Group	No of Crimes 200809	No of Crimes 200910	% Change for 0910	No of Crimes 2001011	% Change for 1011	No of Crimes 2001112 YTD	% Change for 1112 YTD
BURGLARY DWELLING	7	2	-71%	16	700%	2	-50%
BURGLARY OTHER	18	19	6%	8	-58%	1	-67%
CRIMINAL DAMAGE	58	66	14%	78	18%	18	-22%
DECEPTION/FRAUD	5	2	-60%	4	100%	0	-100%
DRUG OFFENCES	2	7	250%	8	14%	1	N/A
OTHER OFFENCES	1	3	200%	4	33%	1	0%
ROBBERY	2	1	-50%	0	-100%	1	N/A
SEXUAL OFFENCES	2	3	50%	1	-67%	1	0%
THEFT FROM MOTOR VEHICLES	28	15	-46%	14	-7%	3	-50%
THEFT/HANDLING	25	45	80%	26	-42%	10	-29%
THEFT OF MOTOR VEHICLES	14	8	-43%	6	-25%	4	300%
VIOLENCE OFFENCES	29	44	52%	56	27%	17	-23%
Sum:	191	215	13%	221	3%	59	-25%

Crime Analysis

Kettering Wards

K007 Desborough St Giles

All Crime by Month



Crime Analysis

Kettering Wards

K008 Ise Lodge

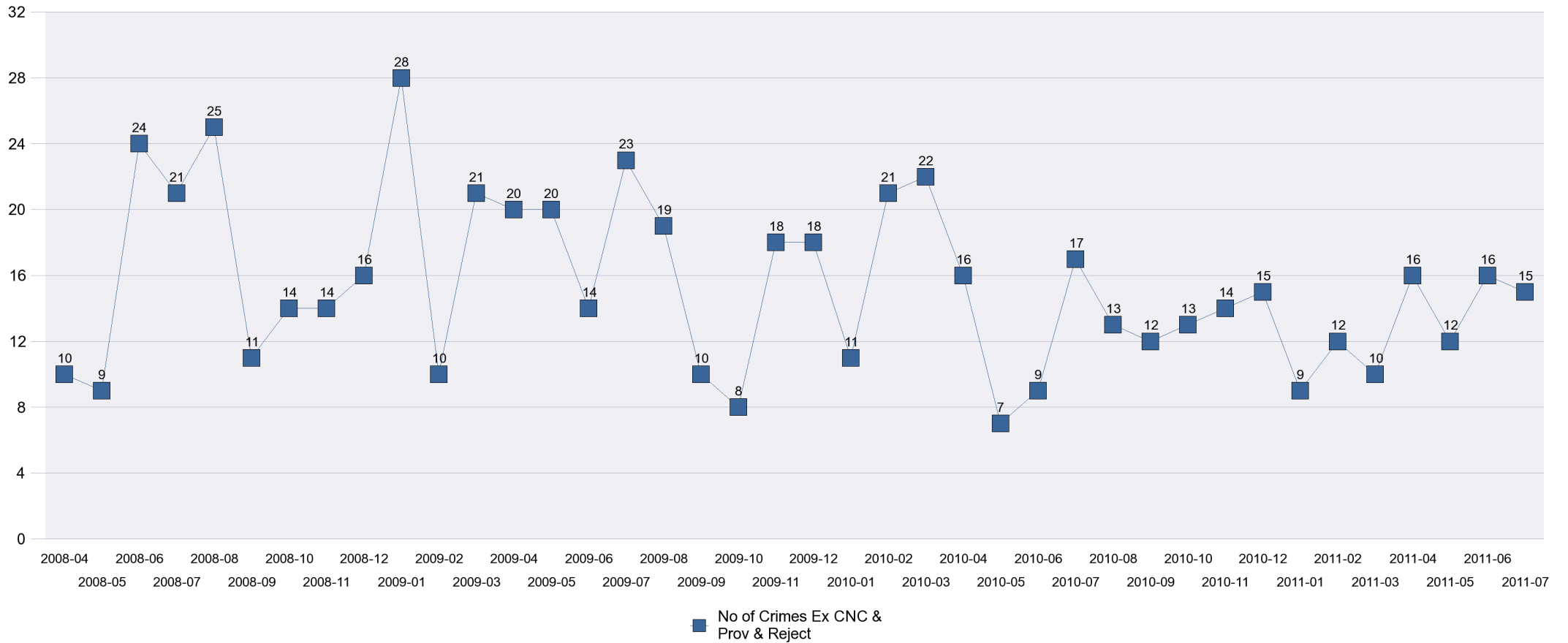
HO Group	No of Crimes 200809	No of Crimes 200910	% Change for 0910	No of Crimes 2001011	% Change for 1011	No of Crimes 2001112 YTD	% Change for 1112 YTD
BURGLARY DWELLING	15	14	-7%	9	-36%	2	-67%
BURGLARY OTHER	14	15	7%	7	-53%	0	-100%
CRIMINAL DAMAGE	49	46	-6%	35	-24%	14	100%
DECEPTION/FRAUD	0	3	#DIV/0	1	-67%	0	#DIV/0
DRUG OFFENCES	1	4	300%	1	-75%	1	N/A
OTHER OFFENCES	0	1	#DIV/0	1	0%	1	N/A
ROBBERY	1	4	300%	0	-100%	1	N/A
SEXUAL OFFENCES	3	2	-33%	4	100%	5	150%
THEFT FROM MOTOR VEHICLES	37	25	-32%	17	-32%	4	-20%
THEFT/HANDLING	50	51	2%	27	-47%	17	55%
THEFT OF MOTOR VEHICLES	4	5	25%	8	60%	8	700%
VIOLENCE OFFENCES	29	34	17%	37	9%	6	-50%
Sum:	203	204	0%	147	-28%	59	20%

Crime Analysis

Kettering Wards

K008 Ise Lodge

All Crime by Month



Crime Analysis

Kettering Wards

K009 Northfield

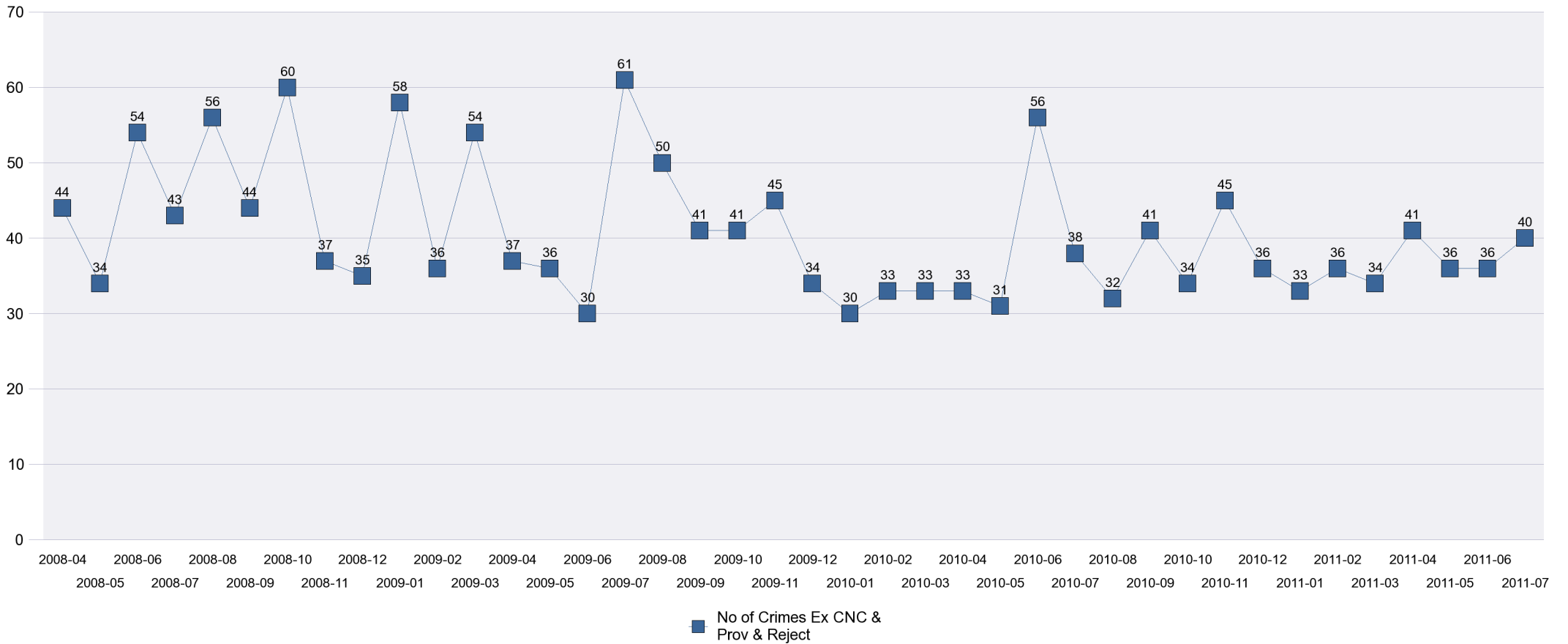
HO Group	No of Crimes 200809	No of Crimes 200910	% Change for 0910	No of Crimes 2001011	% Change for 1011	No of Crimes 2001112 YTD	% Change for 1112 YTD
BURGLARY DWELLING	12	16	33%	18	13%	3	-73%
BURGLARY OTHER	43	30	-30%	21	-30%	4	-60%
CRIMINAL DAMAGE	119	82	-31%	69	-16%	23	53%
DECEPTION/FRAUD	47	25	-47%	32	28%	16	0%
DRUG OFFENCES	11	18	64%	15	-17%	5	-29%
OTHER OFFENCES	5	9	80%	6	-33%	1	-67%
ROBBERY	2	1	-50%	9	800%	1	-50%
SEXUAL OFFENCES	7	6	-14%	3	-50%	1	-50%
THEFT FROM MOTOR VEHICLES	59	35	-41%	15	-57%	9	125%
THEFT/HANDLING	137	173	26%	159	-8%	55	8%
THEFT OF MOTOR VEHICLES	34	16	-53%	11	-31%	6	-14%
VIOLENCE OFFENCES	79	60	-24%	91	52%	29	-3%
Sum:	555	471	-15%	449	-5%	153	-3%

Crime Analysis

Kettering Wards

K009 Northfield

All Crime by Month



Crime Analysis

Kettering Wards

K010 Pipers Hill

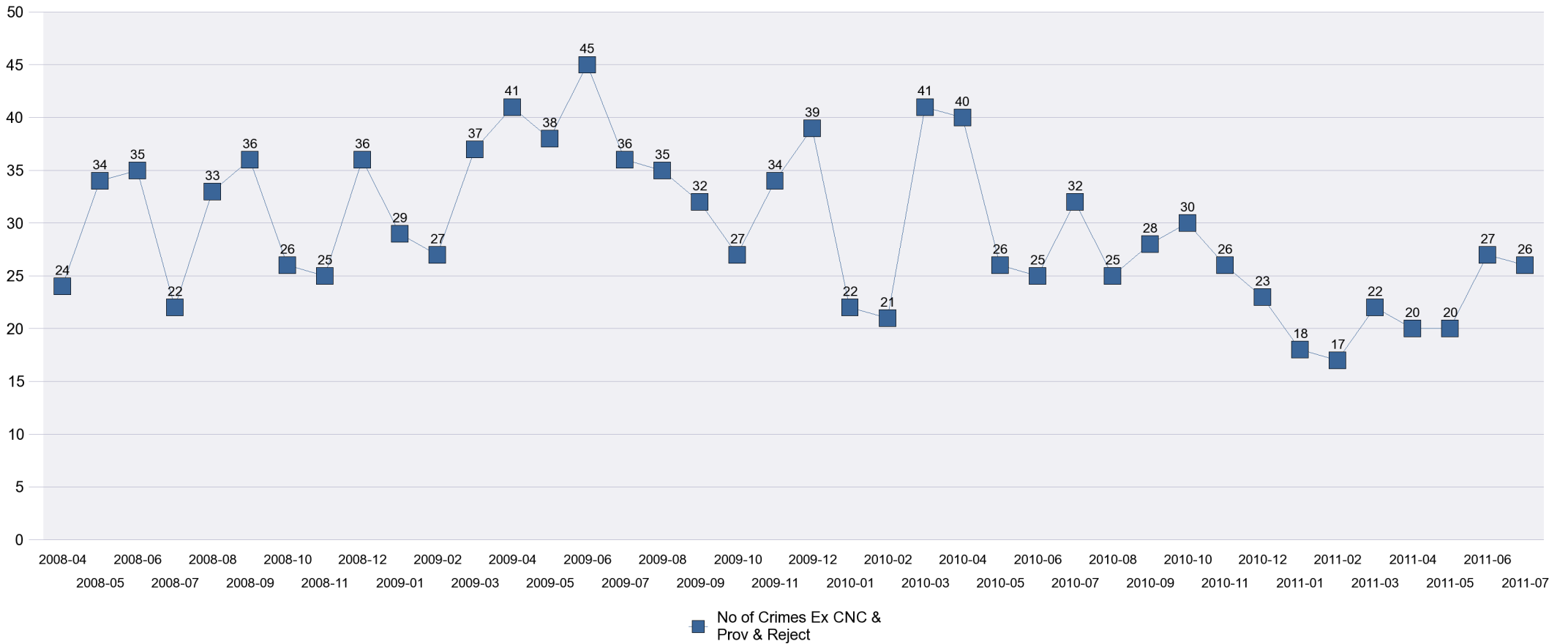
HO Group	No of Crimes 200809	No of Crimes 200910	% Change for 0910	No of Crimes 2001011	% Change for 1011	No of Crimes 2001112 YTD	% Change for 1112 YTD
BURGLARY DWELLING	24	26	8%	37	42%	2	-85%
BURGLARY OTHER	28	20	-29%	13	-35%	5	-17%
CRIMINAL DAMAGE	112	105	-6%	72	-31%	28	-22%
DECEPTION/FRAUD	23	13	-43%	13	0%	2	-71%
DRUG OFFENCES	20	16	-20%	11	-31%	3	0%
OTHER OFFENCES	4	5	25%	6	20%	0	-100%
ROBBERY	8	7	-13%	4	-43%	0	-100%
SEXUAL OFFENCES	3	5	67%	10	100%	0	N/A
THEFT FROM MOTOR VEHICLES	18	23	28%	25	9%	6	-25%
THEFT/HANDLING	63	70	11%	61	-13%	23	-8%
THEFT OF MOTOR VEHICLES	15	22	47%	4	-82%	2	100%
VIOLENCE OFFENCES	46	99	115%	56	-43%	22	22%
Sum:	364	411	13%	312	-24%	93	-24%

Crime Analysis

Kettering Wards

K010 Pipers Hill

All Crime by Month



Crime Analysis

Kettering Wards

K011 Queen Eleanor and Buccleuch

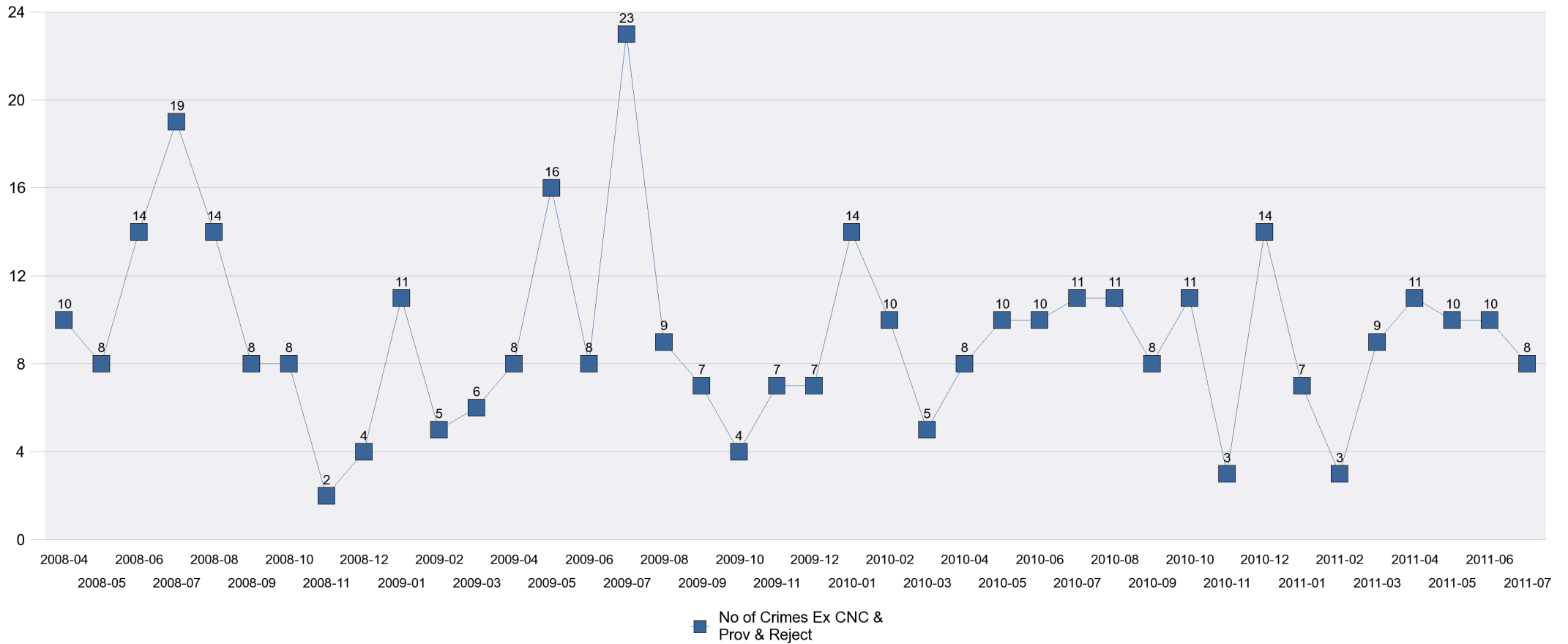
HO Group	No of Crimes 200809	No of Crimes 200910	% Change for 0910	No of Crimes 2001011	% Change for 1011	No of Crimes 2001112 YTD	% Change for 1112 YTD
BURGLARY DWELLING	4	10	150%	8	-20%	2	-33%
BURGLARY OTHER	16	15	-6%	18	20%	4	-67%
CRIMINAL DAMAGE	36	15	-58%	16	7%	7	0%
DECEPTION/FRAUD	1	2	100%	4	100%	2	100%
DRUG OFFENCES	6	5	-17%	6	20%	3	50%
OTHER OFFENCES	1	1	0%	0	-100%	0	N/A
ROBBERY	1	0	-100%	0	N/A	1	N/A
SEXUAL OFFENCES	0	0	N/A	1	N/A	0	-100%
THEFT FROM MOTOR VEHICLES	12	14	17%	17	21%	3	200%
THEFT/HANDLING	17	45	165%	23	-49%	9	13%
THEFT OF MOTOR VEHICLES	7	3	-57%	8	167%	2	-33%
VIOLENCE OFFENCES	8	8	0%	4	-50%	6	500%
Sum:	109	118	8%	105	-11%	39	0%

Crime Analysis

Kettering Wards

K011 Queen Eleanor and Buccleuch

All Crime by Month



Crime Analysis

Kettering Wards

K012 Rothwell

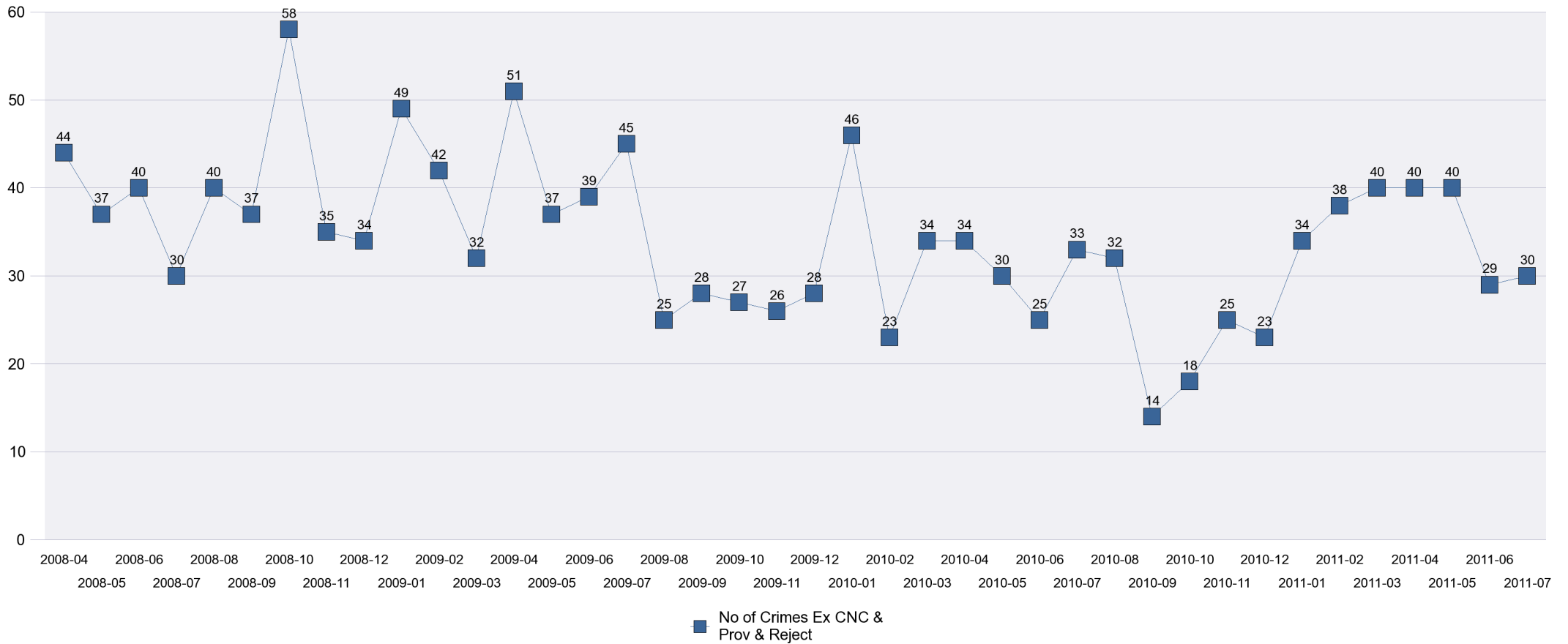
HO Group	No of Crimes 200809	No of Crimes 200910	% Change for 0910	No of Crimes 2001011	% Change for 1011	No of Crimes 2001112 YTD	% Change for 1112 YTD
BURGLARY DWELLING	25	26	4%	23	-12%	10	-9%
BURGLARY OTHER	37	29	-22%	37	28%	28	180%
CRIMINAL DAMAGE	158	127	-20%	103	-19%	35	-15%
DECEPTION/FRAUD	19	4	-79%	10	150%	2	-33%
DRUG OFFENCES	5	9	80%	2	-78%	0	-100%
OTHER OFFENCES	5	7	40%	2	-71%	0	-100%
ROBBERY	2	2	0%	2	0%	2	100%
SEXUAL OFFENCES	4	4	0%	4	0%	4	100%
THEFT FROM MOTOR VEHICLES	49	32	-35%	24	-25%	5	-38%
THEFT/HANDLING	81	71	-12%	56	-21%	22	57%
THEFT OF MOTOR VEHICLES	22	7	-68%	8	14%	1	-75%
VIOLENCE OFFENCES	71	91	28%	75	-18%	30	20%
Sum:	478	409	-14%	346	-15%	139	14%

Crime Analysis

Kettering Wards

K012 Rothwell

All Crime by Month



Crime Analysis

Kettering Wards

K013 Slade

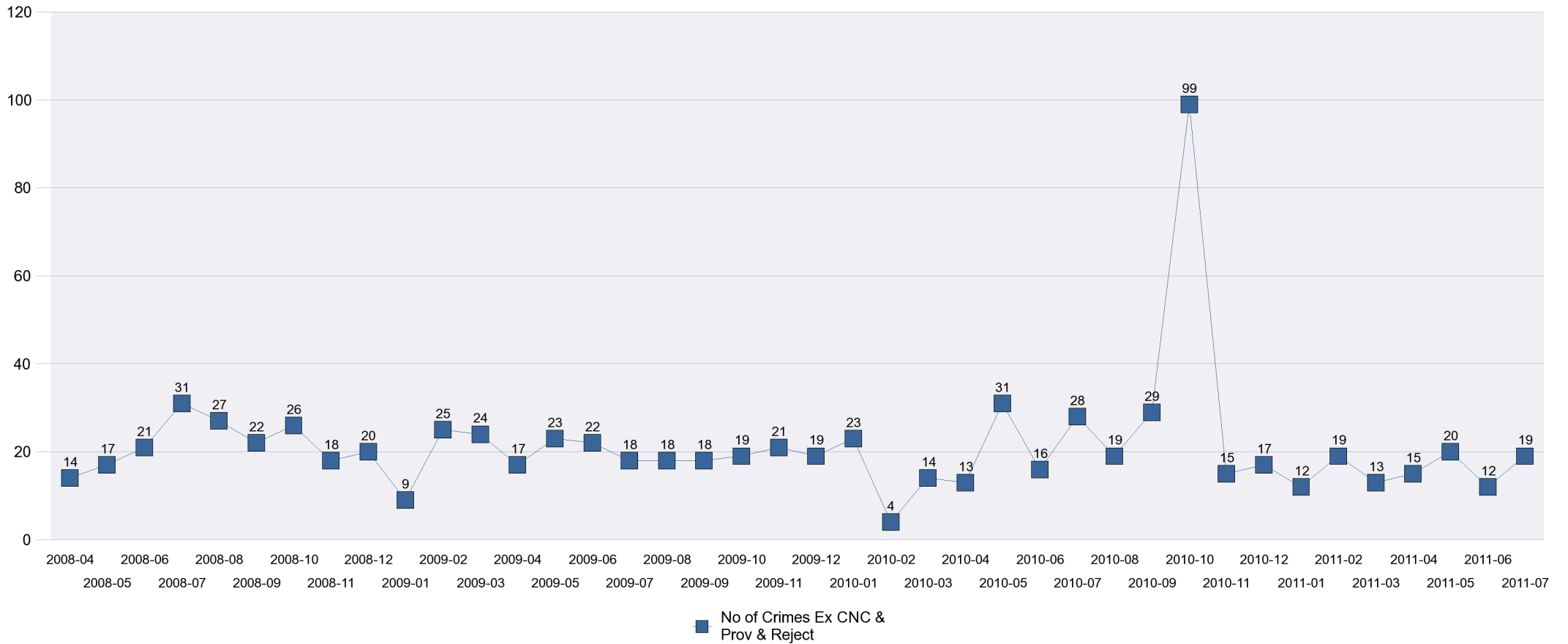
HO Group	No of Crimes 200809	No of Crimes 200910	% Change for 0910	No of Crimes 2001011	% Change for 1011	No of Crimes 2001112 YTD	% Change for 1112 YTD
BURGLARY DWELLING	18	21	17%	8	-62%	4	300%
BURGLARY OTHER	43	27	-37%	22	-19%	5	-58%
CRIMINAL DAMAGE	47	37	-21%	47	27%	8	-47%
DECEPTION/FRAUD	38	24	-37%	18	-25%	1	-83%
DRUG OFFENCES	3	7	133%	2	-71%	1	0%
OTHER OFFENCES	1	1	0%	6	500%	0	-100%
ROBBERY	2	1	-50%	1	0%	0	-100%
SEXUAL OFFENCES	0	1	N/A	4	300%	0	-100%
THEFT FROM MOTOR VEHICLES	37	20	-46%	104	420%	2	-83%
THEFT/HANDLING	37	42	14%	52	24%	28	56%
THEFT OF MOTOR VEHICLES	7	10	43%	13	30%	1	-67%
VIOLENCE OFFENCES	21	25	19%	34	36%	16	7%
Sum:	254	216	-15%	311	44%	66	-25%

Crime Analysis

Kettering Wards

K013 Slade

All Crime by Month



Crime Analysis

Kettering Wards

K014 St Michaels and Wicksteed

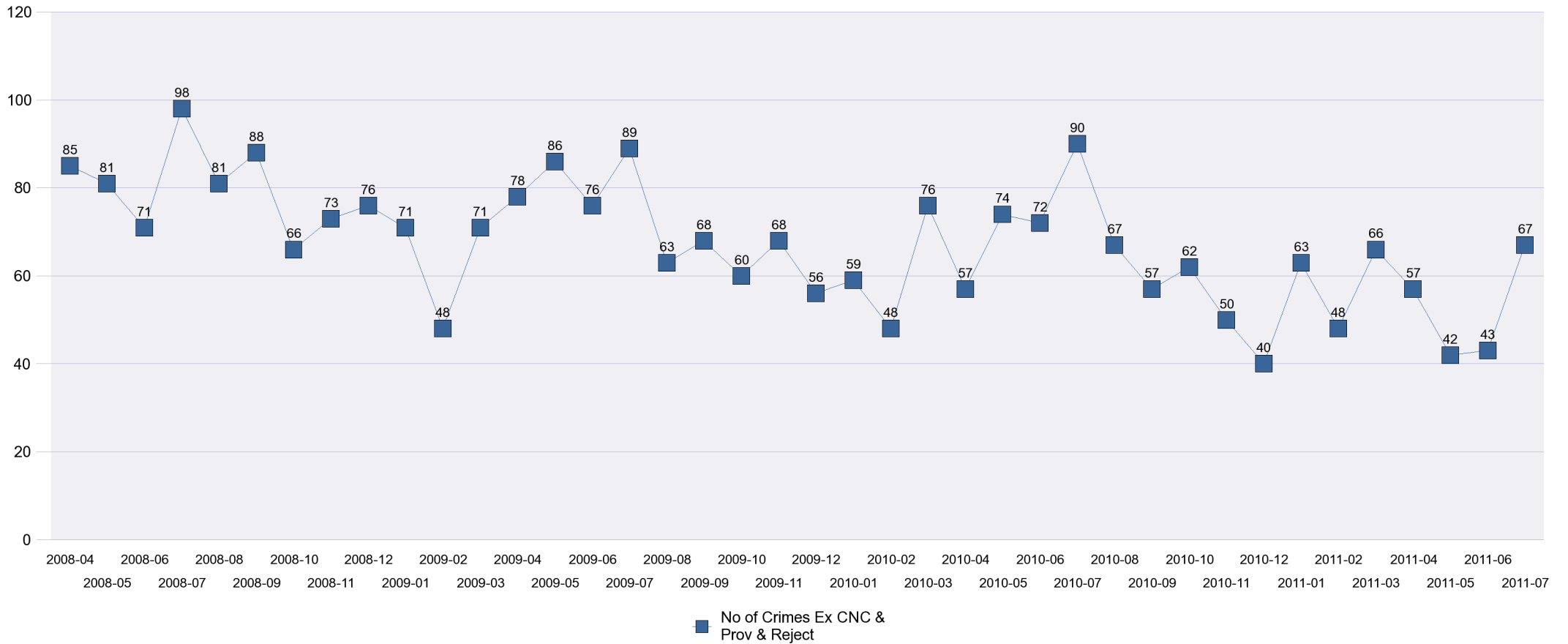
HO Group	No of Crimes 200809	No of Crimes 200910	% Change for 0910	No of Crimes 2001011	% Change for 1011	No of Crimes 2001112 YTD	% Change for 1112 YTD
BURGLARY DWELLING	53	47	-11%	31	-34%	3	-79%
BURGLARY OTHER	72	40	-44%	21	-48%	3	-73%
CRIMINAL DAMAGE	196	179	-9%	145	-19%	40	-33%
DECEPTION/FRAUD	96	85	-11%	119	40%	29	-29%
DRUG OFFENCES	34	24	-29%	38	58%	10	-41%
OTHER OFFENCES	9	17	89%	6	-65%	4	300%
ROBBERY	24	10	-58%	12	20%	4	33%
SEXUAL OFFENCES	2	14	600%	9	-36%	2	-33%
THEFT FROM MOTOR VEHICLES	89	63	-29%	41	-35%	11	-27%
THEFT/HANDLING	182	202	11%	166	-18%	59	-16%
THEFT OF MOTOR VEHICLES	29	19	-34%	16	-16%	7	0%
VIOLENCE OFFENCES	123	127	3%	142	12%	37	-27%
Sum:	909	827	-9%	746	-10%	209	-29%

Crime Analysis

Kettering Wards

K014 St Michaels and Wicksteed

All Crime by Month



Crime Analysis

Kettering Wards

K015 St Peters

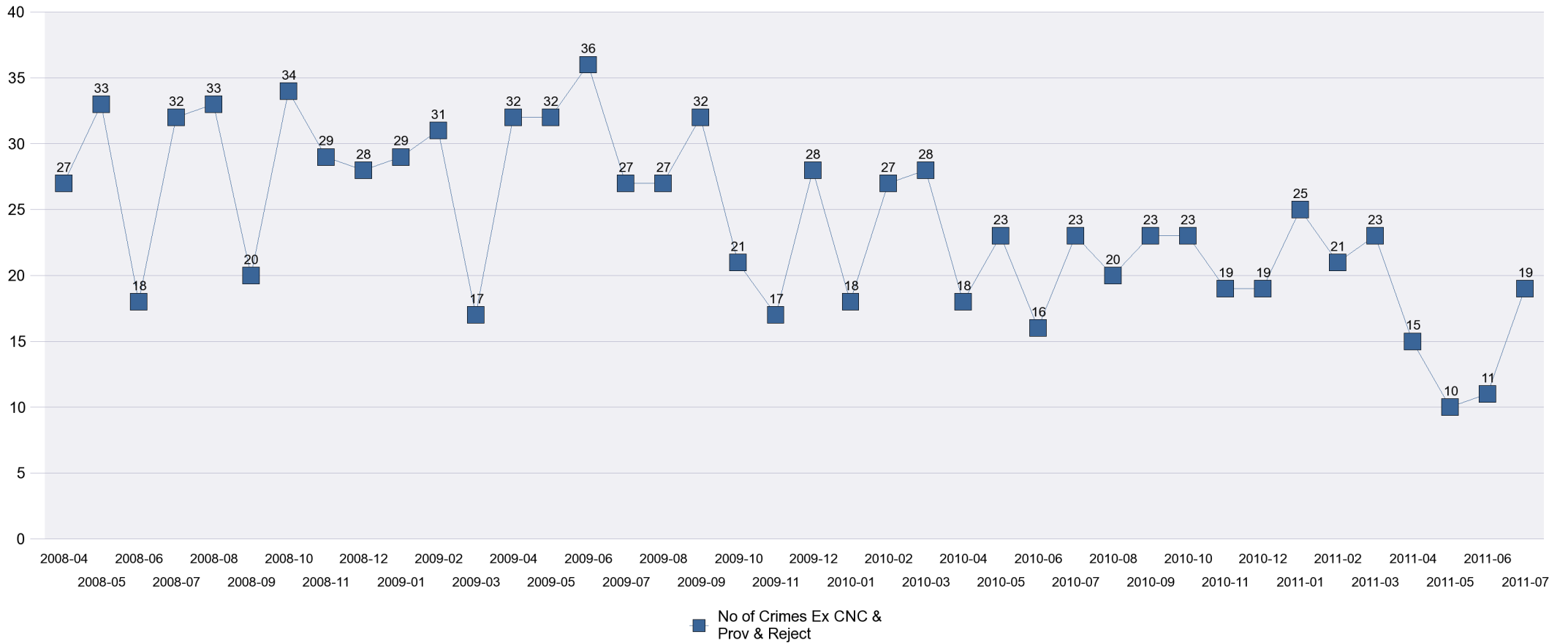
HO Group	No of Crimes 200809	No of Crimes 200910	% Change for 0910	No of Crimes 2001011	% Change for 1011	No of Crimes 2001112 YTD	% Change for 1112 YTD
BURGLARY DWELLING	14	20	43%	16	-20%	1	-67%
BURGLARY OTHER	36	27	-25%	20	-26%	6	-14%
CRIMINAL DAMAGE	49	45	-8%	34	-24%	5	-64%
DECEPTION/FRAUD	8	4	-50%	2	-50%	0	N/A
DRUG OFFENCES	4	14	250%	9	-36%	2	-50%
OTHER OFFENCES	2	3	50%	1	-67%	1	N/A
ROBBERY	3	7	133%	3	-57%	1	N/A
SEXUAL OFFENCES	2	9	350%	2	-78%	1	-50%
THEFT FROM MOTOR VEHICLES	89	49	-45%	44	-10%	5	-64%
THEFT/HANDLING	75	96	28%	64	-33%	19	-10%
THEFT OF MOTOR VEHICLES	14	9	-36%	3	-67%	3	200%
VIOLENCE OFFENCES	35	42	20%	55	31%	11	-21%
Sum:	331	325	-2%	253	-22%	55	-31%

Crime Analysis

Kettering Wards

K015 St Peters

All Crime by Month



Crime Analysis

Kettering Wards

K016 Welland

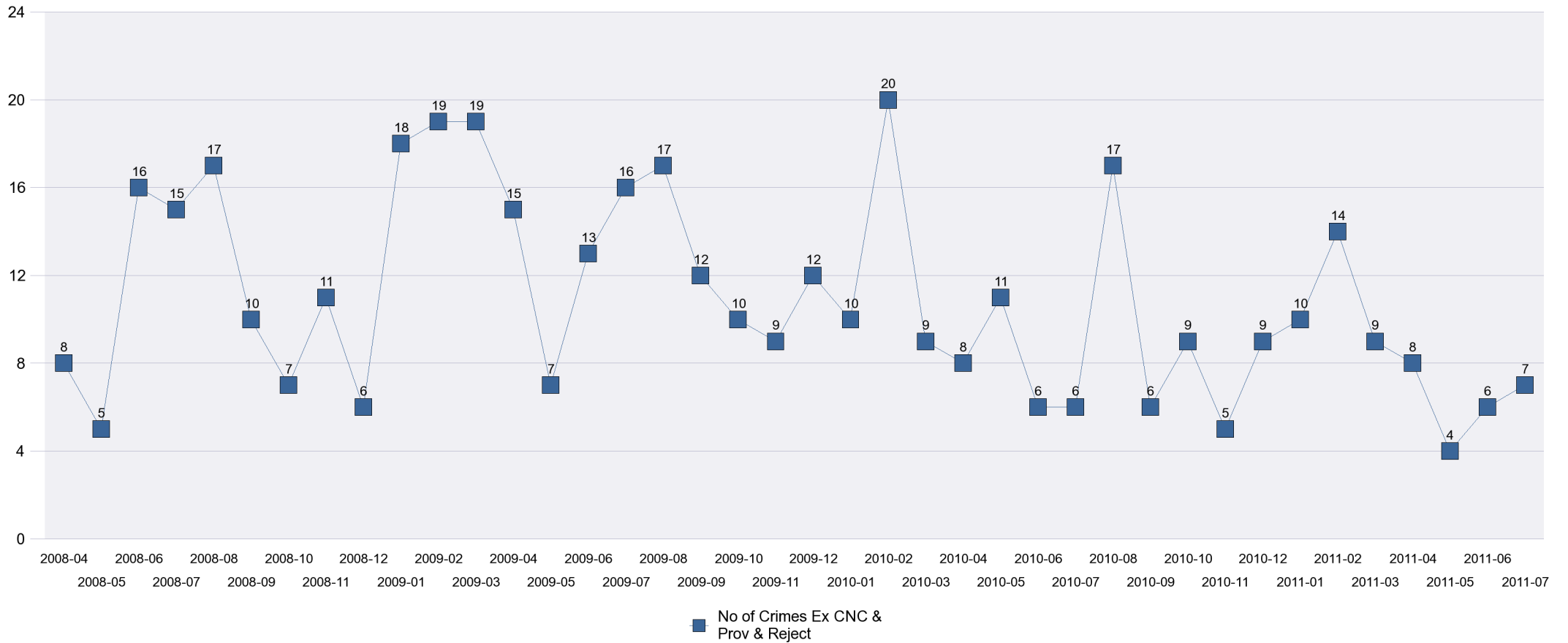
HO Group	No of Crimes 200809	No of Crimes 200910	% Change for 0910	No of Crimes 2001011	% Change for 1011	No of Crimes 2001112 YTD	% Change for 1112 YTD
BURGLARY DWELLING	6	10	67%	8	-20%	1	-50%
BURGLARY OTHER	41	34	-17%	17	-50%	6	-14%
CRIMINAL DAMAGE	24	35	46%	15	-57%	4	-33%
DECEPTION/FRAUD	1	2	100%	3	50%	1	-50%
DRUG OFFENCES	0	1	N/A	2	100%	0	-100%
OTHER OFFENCES	0	2	#DIV/0	0	-100%	0	N/A
ROBBERY	2	0	-100%	2	N/A	0	N/A
SEXUAL OFFENCES	0	0	N/A	2	N/A	0	-100%
THEFT FROM MOTOR VEHICLES	19	9	-53%	15	67%	2	100%
THEFT/HANDLING	31	40	29%	21	-48%	8	33%
THEFT OF MOTOR VEHICLES	13	7	-46%	9	29%	1	-50%
VIOLENCE OFFENCES	14	10	-29%	16	60%	2	0%
Sum:	151	150	-1%	110	-27%	25	-19%

Crime Analysis

Kettering Wards

K016 Welland

All Crime by Month



Crime Analysis

Kettering Wards

K017 William Knibb

HO Group	No of Crimes 200809	No of Crimes 200910	% Change for 0910	No of Crimes 2001011	% Change for 1011	No of Crimes 2001112 YTD	% Change for 1112 YTD
BURGLARY DWELLING	24	32	33%	33	3%	5	-55%
BURGLARY OTHER	43	39	-9%	32	-18%	8	-58%
CRIMINAL DAMAGE	198	237	20%	176	-26%	60	-6%
DECEPTION/FRAUD	40	43	8%	48	12%	2	-88%
DRUG OFFENCES	48	45	-6%	53	18%	19	-14%
OTHER OFFENCES	30	44	47%	31	-30%	13	0%
ROBBERY	12	10	-17%	16	60%	7	75%
SEXUAL OFFENCES	15	13	-13%	15	15%	7	75%
THEFT FROM MOTOR VEHICLES	57	48	-16%	31	-35%	4	-78%
THEFT/HANDLING	482	487	1%	439	-10%	159	2%
THEFT OF MOTOR VEHICLES	42	32	-24%	18	-44%	4	-56%
VIOLENCE OFFENCES	263	287	9%	280	-2%	100	9%
Sum:	1254	1317	5%	1172	-11%	388	-10%

Crime Analysis

Kettering Wards

K017 William Knibb

All Crime by Month

