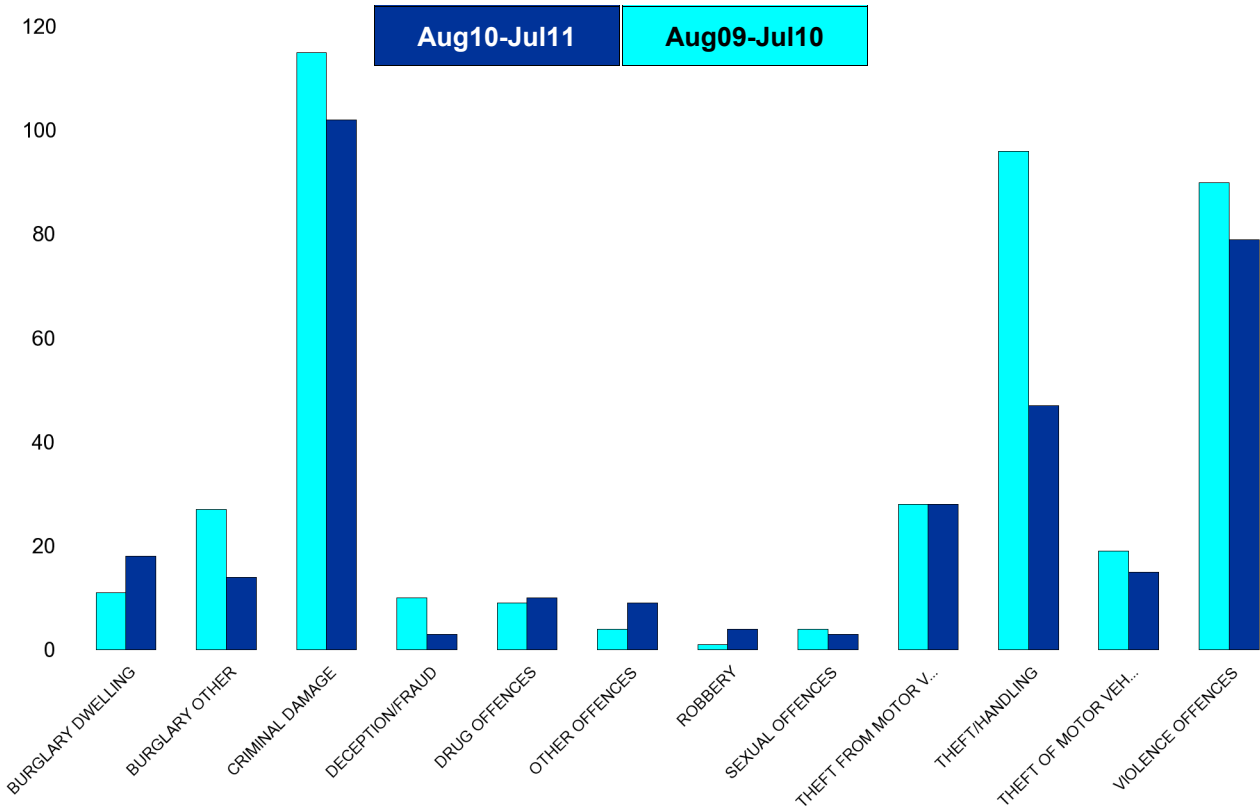


## A6 Towns Forum Report

### K006 & K007 Desborough - Crime

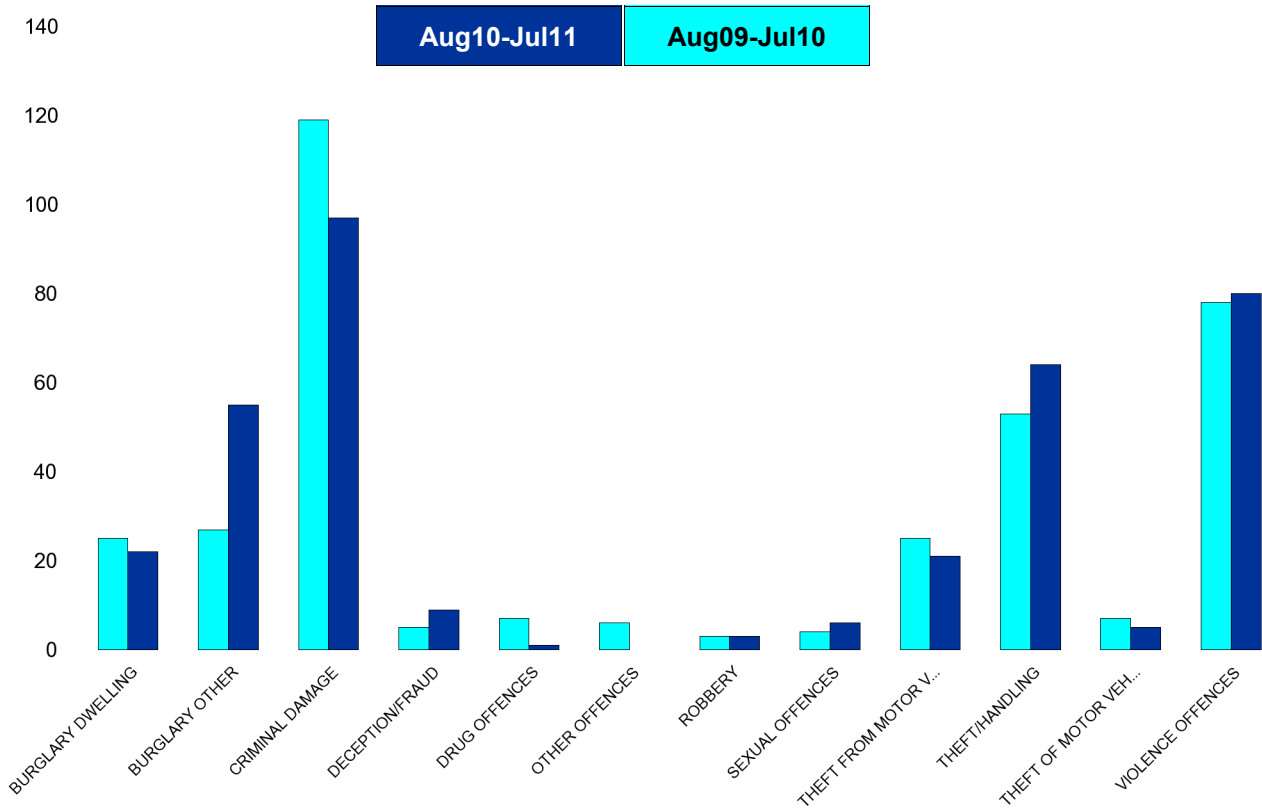
HO Group	No of Crimes (Aug10-Jul11)	No of Crimes (Aug09-Jul10)	+/- Crime	% Change	No of Cleared Up Crimes	Detection Rate (Past 12 Months)
BURGLARY DWELLING	18	11	7	64%	0	0%
BURGLARY OTHER	14	27	-13	-48%	1	7%
CRIMINAL DAMAGE	102	115	-13	-11%	8	8%
DECEPTION/FRAUD	3	10	-7	-70%	1	33%
DRUG OFFENCES	10	9	1	11%	6	60%
OTHER OFFENCES	9	4	5	125%	5	56%
ROBBERY	4	1	3	300%	0	0%
SEXUAL OFFENCES	3	4	-1	-25%	1	33%
THEFT FROM MOTOR VEHICLES	28	28	0	0%	0	0%
THEFT/HANDLING	47	96	-49	-51%	7	15%
THEFT OF MOTOR VEHICLES	15	19	-4	-21%	5	33%
VIOLENCE OFFENCES	79	90	-11	-12%	36	46%
<b>Sum:</b>	<b>332</b>	<b>414</b>	<b>-82</b>	<b>-20%</b>	<b>70</b>	<b>21%</b>



## A6 Towns Forum Report

### K012 Rothwell - Crime

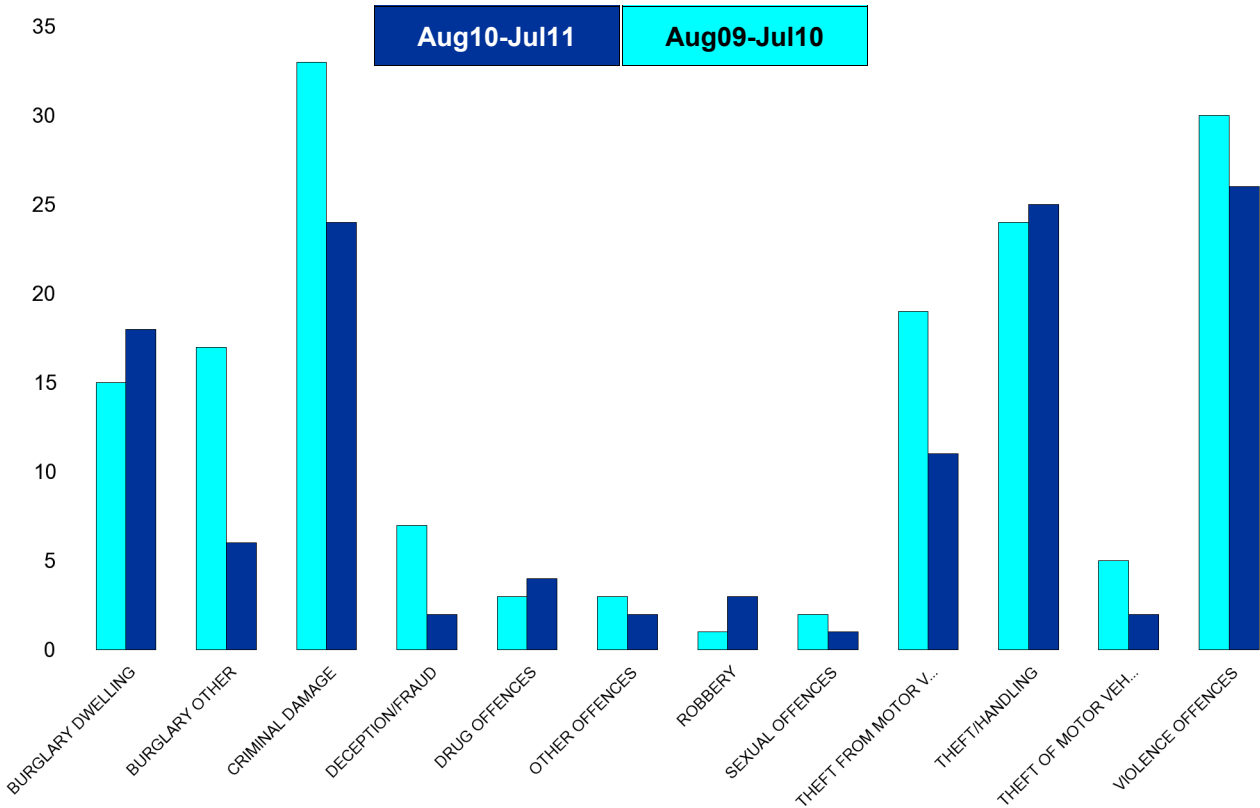
HO Group	No of Crimes (Aug10-Jul11)	No of Crimes (Aug09-Jul10)	+/- Crime	% Change	No of Cleared Up Crimes	Detection Rate (Past 12 Months)
BURGLARY DWELLING	22	25	-3	-12%	7	32%
BURGLARY OTHER	55	27	28	104%	6	11%
CRIMINAL DAMAGE	97	119	-22	-18%	23	24%
DECEPTION/FRAUD	9	5	4	80%	3	33%
DRUG OFFENCES	1	7	-6	-86%	1	100%
OTHER OFFENCES	0	6	-6	-100%	0	0%
ROBBERY	3	3	0	0%	0	0%
SEXUAL OFFENCES	6	4	2	50%	1	17%
THEFT FROM MOTOR VEHICLES	21	25	-4	-16%	0	0%
THEFT/HANDLING	64	53	11	21%	9	14%
THEFT OF MOTOR VEHICLES	5	7	-2	-29%	3	60%
VIOLENCE OFFENCES	80	78	2	3%	35	44%
<b>Sum:</b>	<b>363</b>	<b>359</b>	<b>4</b>	<b>1%</b>	<b>88</b>	<b>24%</b>



## A6 Towns Forum Report

### K003 Barton - Crime

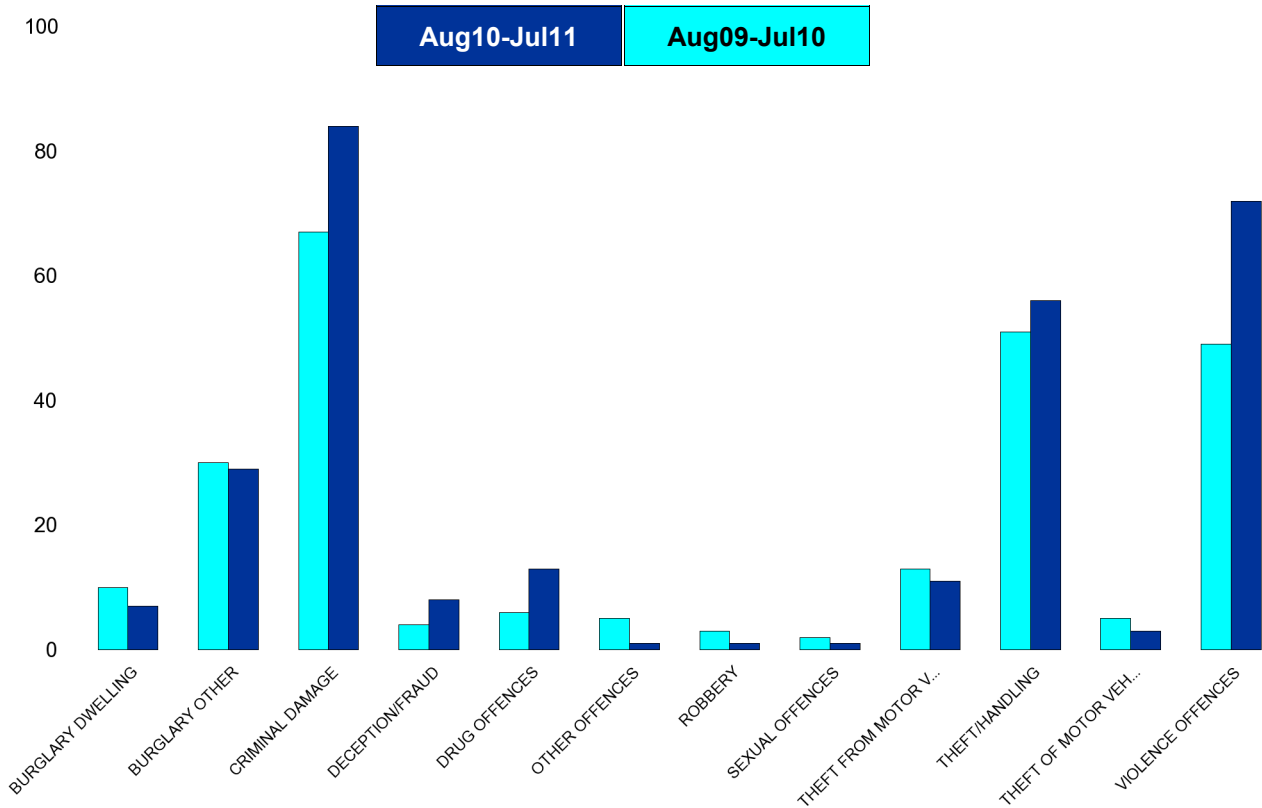
HO Group	No of Crimes (Aug10-Jul11)	No of Crimes (Aug09-Jul10)	+/- Crime	% Change	No of Cleared Up Crimes	Detection Rate (Past 12 Months)
BURGLARY DWELLING	18	15	3	20%	3	17%
BURGLARY OTHER	6	17	-11	-65%	2	33%
CRIMINAL DAMAGE	24	33	-9	-27%	1	4%
DECEPTION/FRAUD	2	7	-5	-71%	2	100%
DRUG OFFENCES	4	3	1	33%	2	50%
OTHER OFFENCES	2	3	-1	-33%	2	100%
ROBBERY	3	1	2	200%	1	33%
SEXUAL OFFENCES	1	2	-1	-50%	0	0%
THEFT FROM MOTOR VEHICLES	11	19	-8	-42%	0	0%
THEFT/HANDLING	25	24	1	4%	4	16%
THEFT OF MOTOR VEHICLES	2	5	-3	-60%	1	50%
VIOLENCE OFFENCES	26	30	-4	-13%	15	58%
<b>Sum:</b>	<b>124</b>	<b>159</b>	<b>-35</b>	<b>-22%</b>	<b>33</b>	<b>27%</b>



## A6 Towns Forum Report

### K005 Burton Latimer - Crime

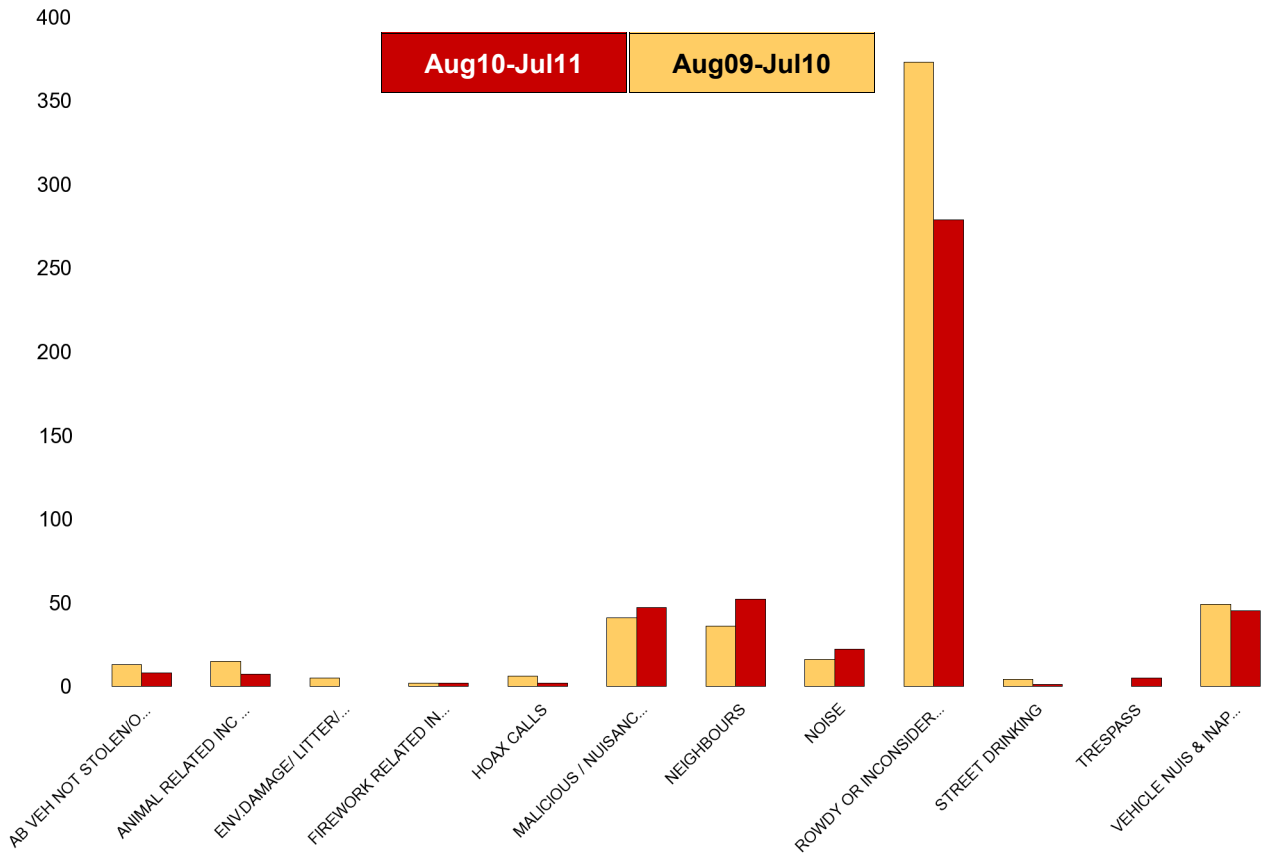
HO Group	No of Crimes (Aug10-Jul11)	No of Crimes (Aug09-Jul10)	+/- Crime	% Change	No of Cleared Up Crimes	Detection Rate (Past 12 Months)
BURGLARY DWELLING	7	10	-3	-30%	0	0%
BURGLARY OTHER	29	30	-1	-3%	13	45%
CRIMINAL DAMAGE	84	67	17	25%	17	20%
DECEPTION/FRAUD	8	4	4	100%	3	38%
DRUG OFFENCES	13	6	7	117%	14	108%
OTHER OFFENCES	1	5	-4	-80%	2	200%
ROBBERY	1	3	-2	-67%	1	100%
SEXUAL OFFENCES	1	2	-1	-50%	2	200%
THEFT FROM MOTOR VEHICLES	11	13	-2	-15%	1	9%
THEFT/HANDLING	56	51	5	10%	7	13%
THEFT OF MOTOR VEHICLES	3	5	-2	-40%	3	100%
VIOLENCE OFFENCES	72	49	23	47%	33	46%
<b>Sum:</b>	<b>286</b>	<b>245</b>	<b>41</b>	<b>17%</b>	<b>96</b>	<b>34%</b>



# A6 Towns Forum Report

## K006 & K007 Desborough ASB

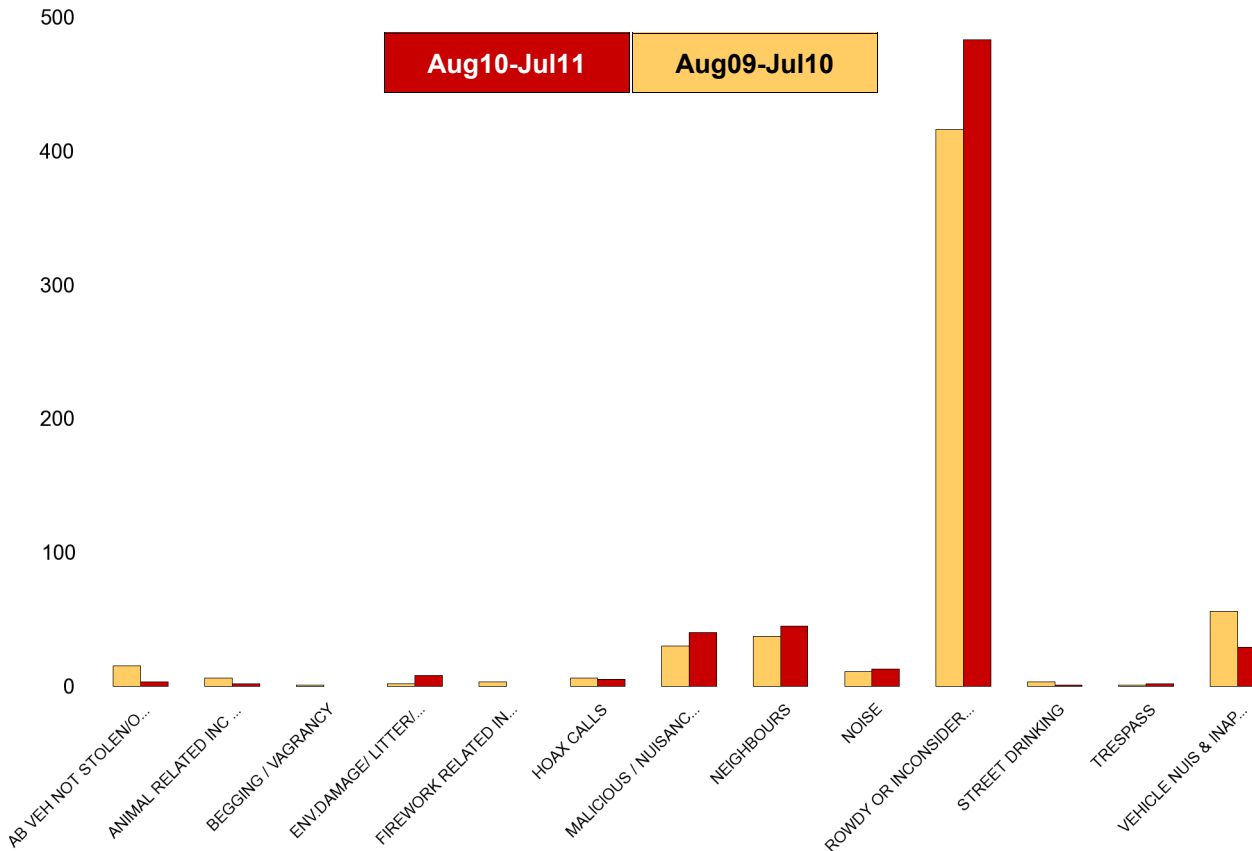
NSIR Closing Cat. 1 Desc	No of Incidents (Aug10-Jul11)	No of Incidents (Aug09-Jul10)	+/- Incidents	% Change Incidents
AB VEH NOT STOLEN/OBSTRUCT	8	13	-5	-38%
ANIMAL RELATED INC ANTI-SOCIAL	7	15	-8	-53%
ENV.DAMAGE/ LITTER/ NEEDLES	0	5	-5	-100%
FIREWORK RELATED INCIDENTS	2	2	0	0%
HOAX CALLS	2	6	-4	-67%
MALICIOUS / NUISANCE COMMS	47	41	6	15%
NEIGHBOURS	52	36	16	44%
NOISE	22	16	6	38%
ROWDY OR INCONSIDERATE BEHAV	279	373	-94	-25%
STREET DRINKING	1	4	-3	-75%
TRESPASS	5	0	5	0%
VEHICLE NUIS & INAPPROP VEH US	45	49	-4	-8%
<b>Sum:</b>	<b>470</b>	<b>560</b>	<b>-90</b>	<b>-16%</b>



## A6 Towns Forum Report

### K012 Rothwell ASB

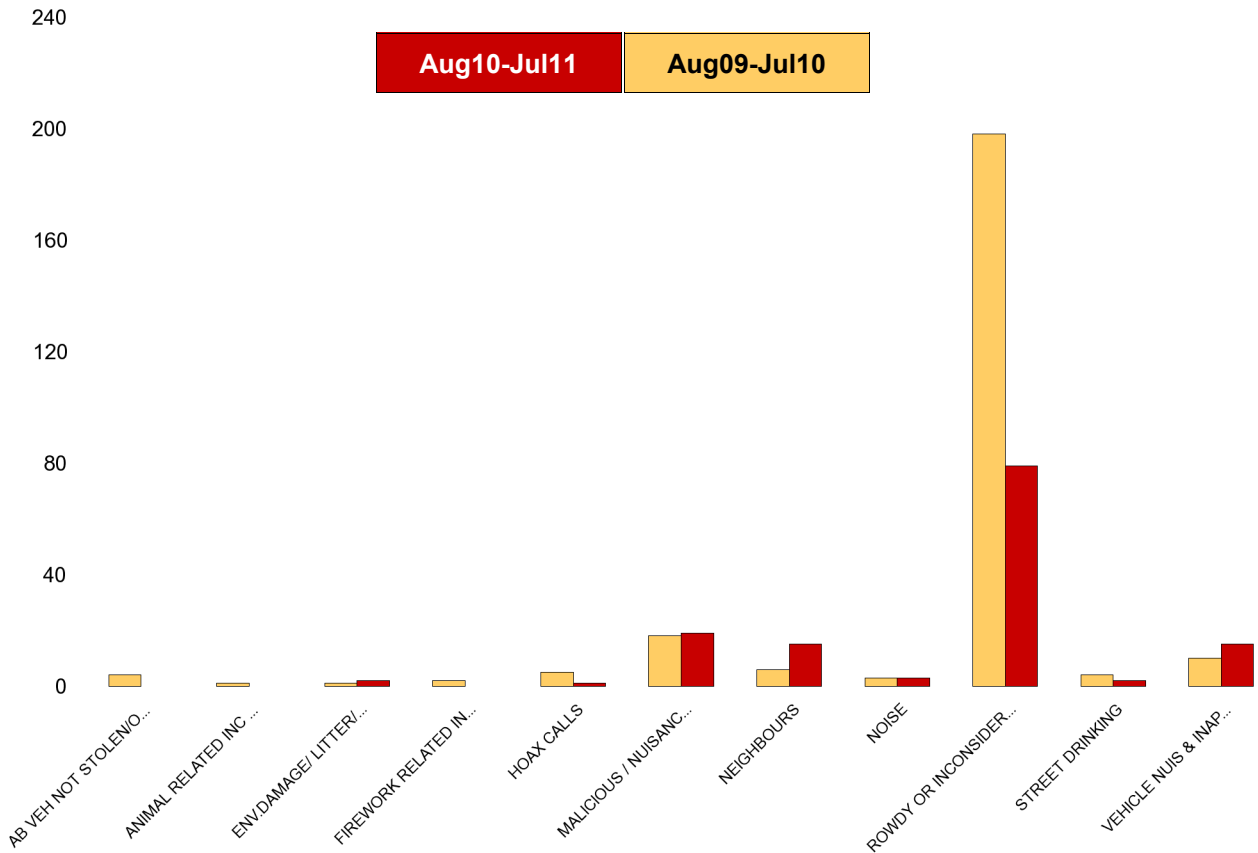
NSIR Closing Cat. 1 Desc	No of Incidents (Aug10-Jul11)	No of Incidents (Aug09-Jul10)	+/- Incidents	% Change Incidents
AB VEH NOT STOLEN/OBSTRUCT	3	15	-12	-80%
ANIMAL RELATED INC ANTI-SOCIAL	2	6	-4	-67%
BEGGING / VAGRANCY	0	1	-1	-100%
ENV.DAMAGE/ LITTER/ NEEDLES	8	2	6	300%
FIREWORK RELATED INCIDENTS	0	3	-3	-100%
HOAX CALLS	5	6	-1	-17%
MALICIOUS / NUISANCE COMMS	40	30	10	33%
NEIGHBOURS	45	37	8	22%
NOISE	13	11	2	18%
ROWDY OR INCONSIDERATE BEHAV	483	416	67	16%
STREET DRINKING	1	3	-2	-67%
TRESPASS	2	1	1	100%
VEHICLE NUIS & INAPPROP VEH US	29	56	-27	-48%
<b>Sum:</b>	<b>631</b>	<b>587</b>	<b>44</b>	<b>7%</b>



# A6 Towns Forum Report

## K003 Barton ASB

NSIR Closing Cat. 1 Desc	No of Incidents (Aug10-Jul11)	No of Incidents (Aug09-Jul10)	+/- Incidents	% Change Incidents
AB VEH NOT STOLEN/OBSTRUCT	0	4	-4	-100%
ANIMAL RELATED INC ANTI-SOCIAL	0	1	-1	-100%
ENV.DAMAGE/ LITTER/ NEEDLES	2	1	1	100%
FIREWORK RELATED INCIDENTS	0	2	-2	-100%
HOAX CALLS	1	5	-4	-80%
MALICIOUS / NUISANCE COMMS	19	18	1	6%
NEIGHBOURS	15	6	9	150%
NOISE	3	3	0	0%
ROWDY OR INCONSIDERATE BEHAV	79	198	-119	-60%
STREET DRINKING	2	4	-2	-50%
VEHICLE NUIS & INAPPROP VEH US	15	10	5	50%
<b>Sum:</b>	<b>136</b>	<b>252</b>	<b>-116</b>	<b>-46%</b>



## A6 Towns Forum Report

### K005 Latimer ASB

NSIR Closing Cat. 1 Desc	No of Incidents (Aug10-Jul11)	No of Incidents (Aug09-Jul10)	+/- Incidents	% Change Incidents
AB VEH NOT STOLEN/OBSTRUCT	9	14	-5	-36%
ANIMAL RELATED INC ANTI-SOCIAL	2	4	-2	-50%
BEGGING / VAGRANCY	1	0	1	0%
ENV.DAMAGE/ LITTER/ NEEDLES	1	0	1	0%
FIREWORK RELATED INCIDENTS	1	0	1	0%
HOAX CALLS	7	3	4	133%
MALICIOUS / NUISANCE COMMS	41	37	4	11%
NEIGHBOURS	41	28	13	46%
NOISE	12	7	5	71%
ROWDY OR INCONSIDERATE BEHAV	196	229	-33	-14%
STREET DRINKING	2	2	0	0%
VEHICLE NUIS & INAPPROP VEH US	18	39	-21	-54%
<b>Sum:</b>	<b>331</b>	<b>363</b>	<b>-32</b>	<b>-9%</b>

