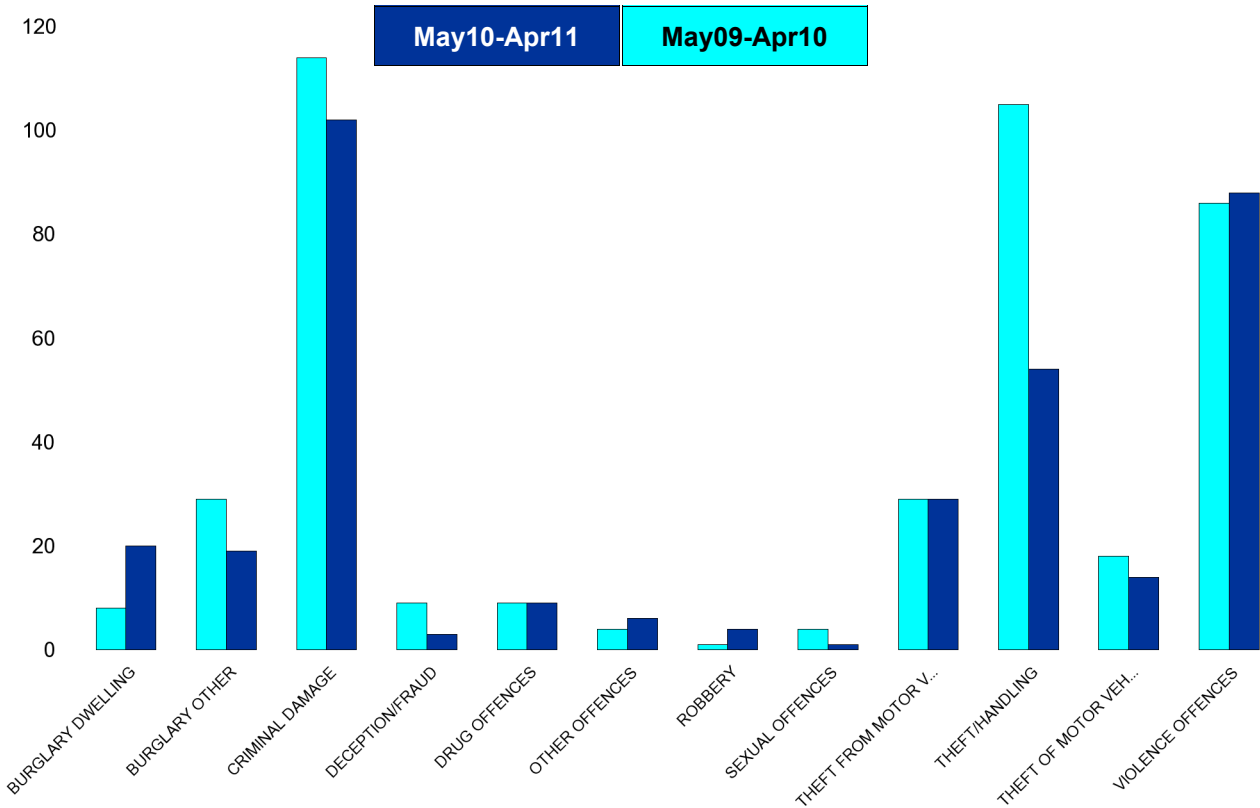


A6 Towns Forum Report

K006 & K007 Desborough - Crime

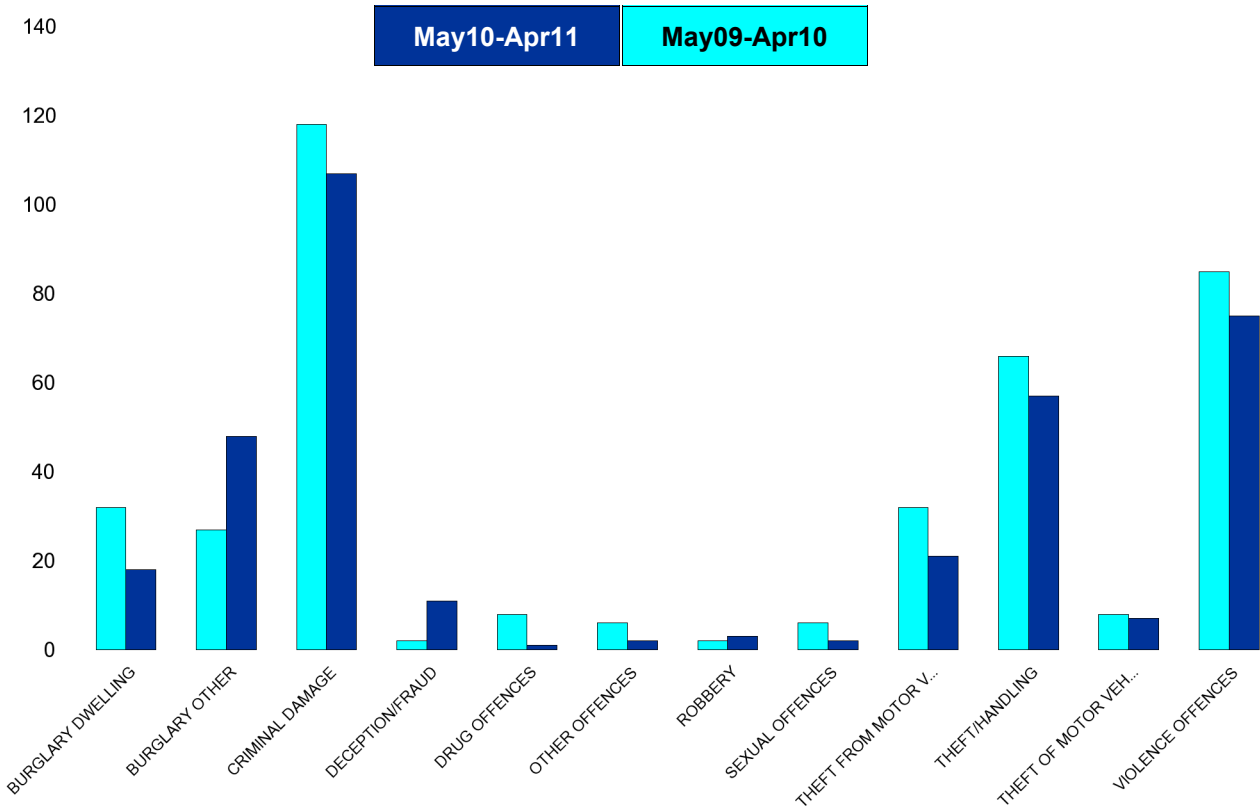
HO Group	No of Crimes (May10-Apr11)	No of Crimes (May09-Apr10)	+/- Crime	% Change	No of Cleared Up Crimes	Detection Rate (Past 12 Months)
BURGLARY DWELLING	20	8	12	150%	1	5%
BURGLARY OTHER	19	29	-10	-34%	1	5%
CRIMINAL DAMAGE	102	114	-12	-11%	6	6%
DECEPTION/FRAUD	3	9	-6	-67%	3	100%
DRUG OFFENCES	9	9	0	0%	6	67%
OTHER OFFENCES	6	4	2	50%	4	67%
ROBBERY	4	1	3	300%	0	0%
SEXUAL OFFENCES	1	4	-3	-75%	0	0%
THEFT FROM MOTOR VEHICLES	29	29	0	0%	0	0%
THEFT/HANDLING	54	105	-51	-49%	9	17%
THEFT OF MOTOR VEHICLES	14	18	-4	-22%	5	36%
VIOLENCE OFFENCES	88	86	2	2%	34	39%
Sum:	349	416	-67	-16%	69	20%



A6 Towns Forum Report

K012 Rothwell - Crime

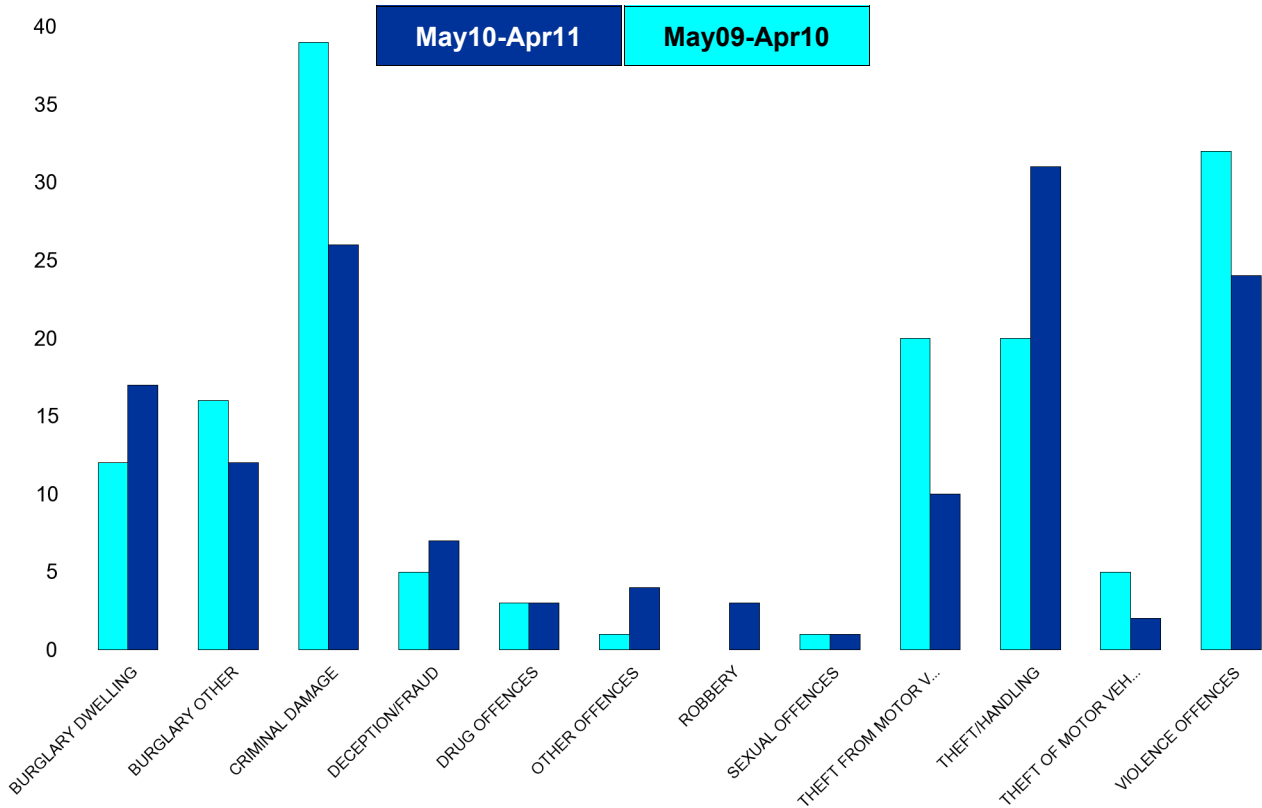
HO Group	No of Crimes (May10-Apr11)	No of Crimes (May09-Apr10)	+/- Crime	% Change	No of Cleared Up Crimes	Detection Rate (Past 12 Months)
BURGLARY DWELLING	18	32	-14	-44%	3	17%
BURGLARY OTHER	48	27	21	78%	7	15%
CRIMINAL DAMAGE	107	118	-11	-9%	27	25%
DECEPTION/FRAUD	11	2	9	450%	2	18%
DRUG OFFENCES	1	8	-7	-88%	2	200%
OTHER OFFENCES	2	6	-4	-67%	2	100%
ROBBERY	3	2	1	50%	0	0%
SEXUAL OFFENCES	2	6	-4	-67%	0	0%
THEFT FROM MOTOR VEHICLES	21	32	-11	-34%	0	0%
THEFT/HANDLING	57	66	-9	-14%	10	18%
THEFT OF MOTOR VEHICLES	7	8	-1	-13%	5	71%
VIOLENCE OFFENCES	75	85	-10	-12%	34	45%
Sum:	352	392	-40	-10%	92	26%



A6 Towns Forum Report

K003 Barton - Crime

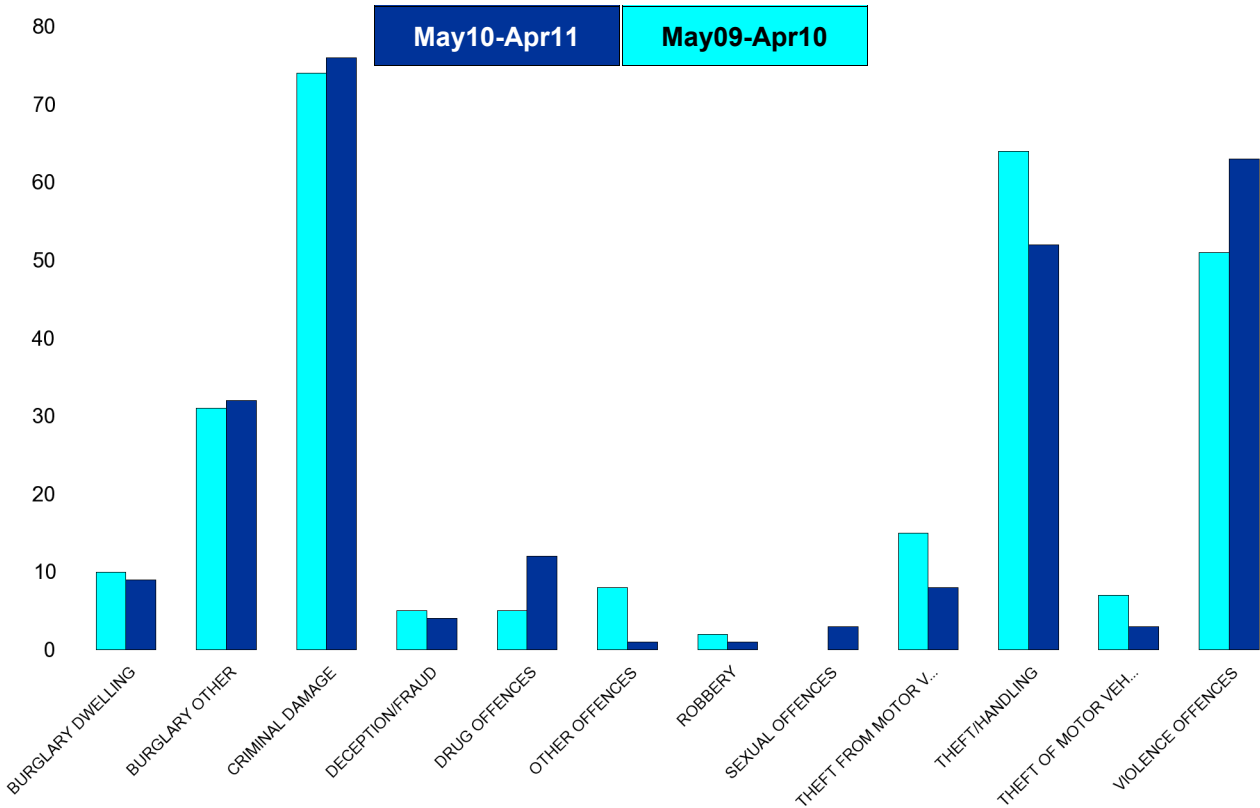
HO Group	No of Crimes (May10-Apr11)	No of Crimes (May09-Apr10)	+/- Crime	% Change	No of Cleared Up Crimes	Detection Rate (Past 12 Months)
BURGLARY DWELLING	17	12	5	42%	2	12%
BURGLARY OTHER	12	16	-4	-25%	2	17%
CRIMINAL DAMAGE	26	39	-13	-33%	0	0%
DECEPTION/FRAUD	7	5	2	40%	2	29%
DRUG OFFENCES	3	3	0	0%	3	100%
OTHER OFFENCES	4	1	3	300%	3	75%
ROBBERY	3	0	3	0%	0	0%
SEXUAL OFFENCES	1	1	0	0%	1	100%
THEFT FROM MOTOR VEHICLES	10	20	-10	-50%	0	0%
THEFT/HANDLING	31	20	11	55%	2	6%
THEFT OF MOTOR VEHICLES	2	5	-3	-60%	1	50%
VIOLENCE OFFENCES	24	32	-8	-25%	14	58%
Sum:	140	154	-14	-9%	30	21%



A6 Towns Forum Report

K005 Burton Latimer - Crime

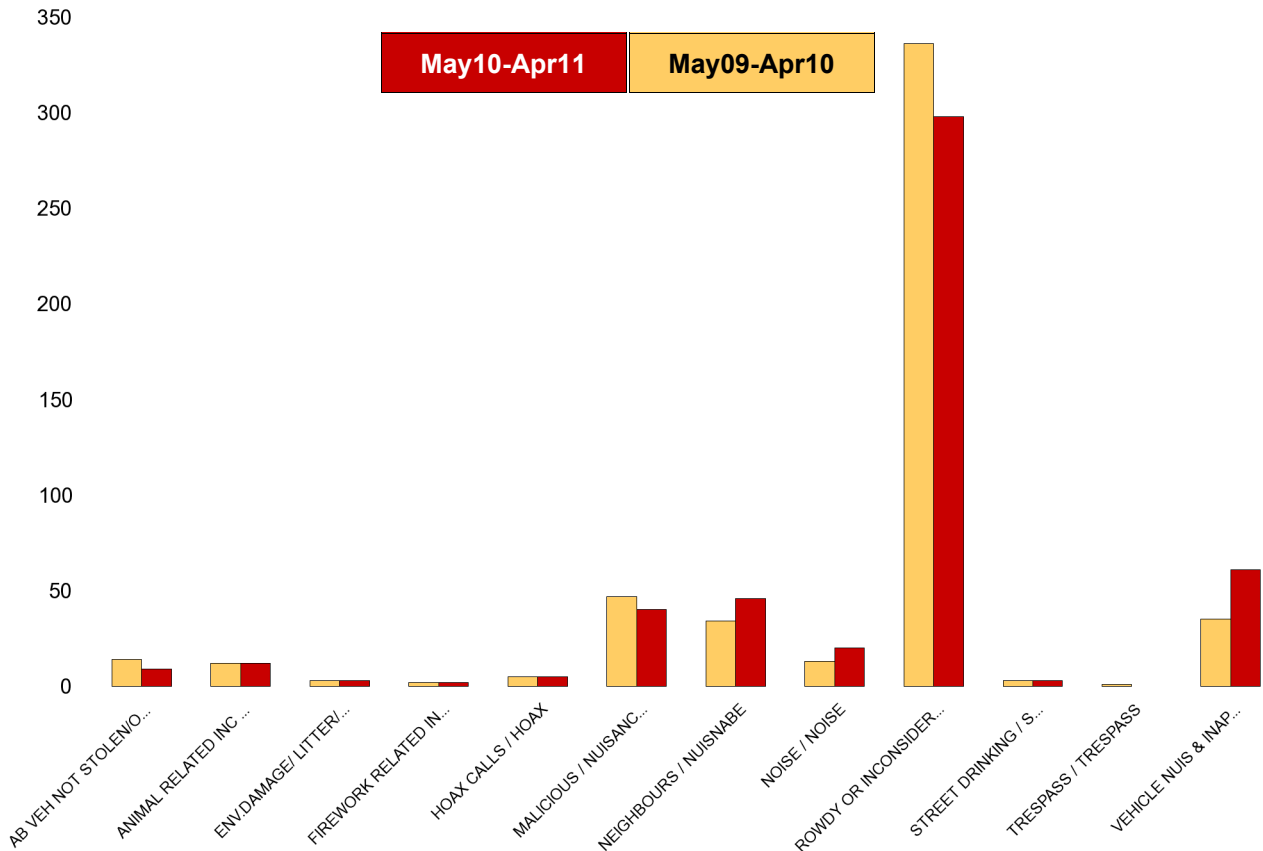
HO Group	No of Crimes (May10-Apr11)	No of Crimes (May09-Apr10)	+/- Crime	% Change	No of Cleared Up Crimes	Detection Rate (Past 12 Months)
BURGLARY DWELLING	9	10	-1	-10%	1	11%
BURGLARY OTHER	32	31	1	3%	12	38%
CRIMINAL DAMAGE	76	74	2	3%	13	17%
DECEPTION/FRAUD	4	5	-1	-20%	2	50%
DRUG OFFENCES	12	5	7	140%	15	125%
OTHER OFFENCES	1	8	-7	-88%	2	200%
ROBBERY	1	2	-1	-50%	0	0%
SEXUAL OFFENCES	3	0	3	#DIV/0	1	33%
THEFT FROM MOTOR VEHICLES	8	15	-7	-47%	1	13%
THEFT/HANDLING	52	64	-12	-19%	11	21%
THEFT OF MOTOR VEHICLES	3	7	-4	-57%	4	133%
VIOLENCE OFFENCES	63	51	12	24%	26	41%
Sum:	264	272	-8	-3%	88	33%



A6 Towns Forum Report

K006 & K007 Desborough ASB

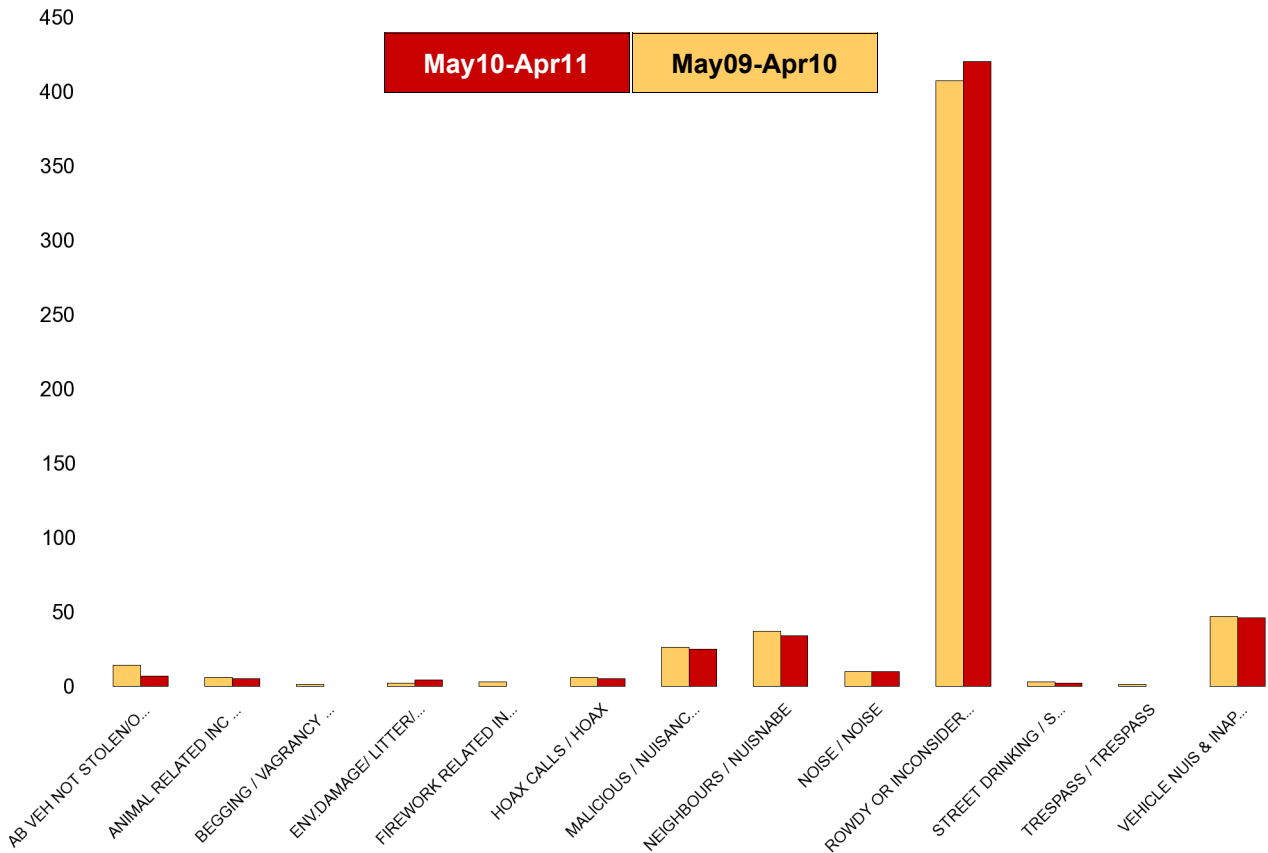
NSIR Closing Cat. 1 Desc	No of Incidents (May10-Apr11)	No of Incidents (May09-Apr10)	+/- Incidents	% Change Incidents
AB VEH NOT STOLEN/OBSTRUCT	9	14	-5	-36%
ANIMAL RELATED INC ANTI-SOCIAL	12	12	0	0%
ENV.DAMAGE/ LITTER/ NEEDLES	3	3	0	0%
FIREWORK RELATED INCIDENTS	2	2	0	0%
HOAX CALLS	5	5	0	0%
MALICIOUS / NUISANCE COMMS	40	47	-7	-15%
NOISE	20	13	7	54%
NEIGHBOURS	46	34	12	35%
ROWDY OR INCONSIDERATE BEHAV	298	336	-38	-11%
STREET DRINKING	3	3	0	0%
TRESPASS	0	1	-1	-100%
VEHICLE NUIS & INAPPROP VEH US	61	35	26	74%
Sum:	540	505	35	7%



A6 Towns Forum Report

K012 Rothwell ASB

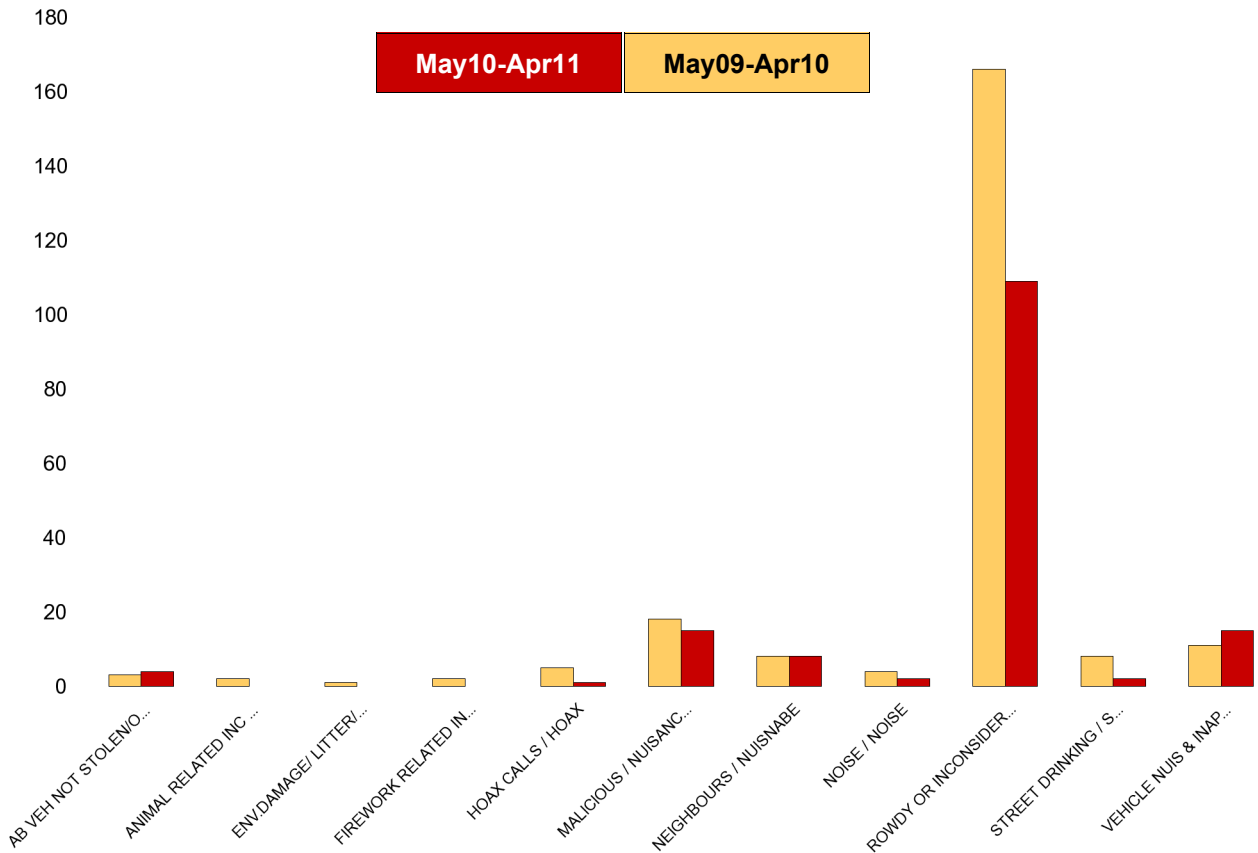
NSIR Closing Cat. 1 Desc	No of Incidents (May10-Apr11)	No of Incidents (May09-Apr10)	+/- Incidents	% Change Incidents
AB VEH NOT STOLEN/OBSTRUCT	7	14	-7	-50%
ANIMAL RELATED INC ANTI-SOCIAL	5	6	-1	-17%
BEGGING / VAGRANCY	0	1	-1	-100%
ENV.DAMAGE/ LITTER/ NEEDLES	4	2	2	100%
FIREWORK RELATED INCIDENTS	0	3	-3	-100%
HOAX CALLS	5	6	-1	-17%
MALICIOUS / NUISANCE COMMS	25	26	-1	-4%
NOISE	10	10	0	0%
NEIGHBOURS	34	37	-3	-8%
ROWDY OR INCONSIDERATE BEHAV	420	407	13	3%
STREET DRINKING	2	3	-1	-33%
TRESPASS	0	1	-1	-100%
VEHICLE NUIS & INAPPROP VEH US	46	47	-1	-2%
Sum:	612	563	49	9%



A6 Towns Forum Report

K003 Barton ASB

NSIR Closing Cat. 1 Desc	No of Incidents (May10-Apr11)	No of Incidents (May09-Apr10)	+/- Incidents	% Change Incidents
AB VEH NOT STOLEN/OBSTRUCT	4	3	1	33%
ANIMAL RELATED INC ANTI-SOCIAL	0	2	-2	-100%
ENV.DAMAGE/ LITTER/ NEEDLES	0	1	-1	-100%
FIREWORK RELATED INCIDENTS	0	2	-2	-100%
HOAX CALLS	1	5	-4	-80%
MALICIOUS / NUISANCE COMMS	15	18	-3	-17%
NOISE	2	4	-2	-50%
NEIGHBOURS	8	8	0	0%
ROWDY OR INCONSIDERATE BEHAV	109	166	-57	-34%
STREET DRINKING	2	8	-6	-75%
VEHICLE NUIS & INAPPROP VEH US	15	11	4	36%
Sum:	174	228	-54	-24%



A6 Towns Forum Report

K005 Latimer ASB

NSIR Closing Cat. 1 Desc	No of Incidents (May10-Apr11)	No of Incidents (May09-Apr10)	+/- Incidents	% Change Incidents
AB VEH NOT STOLEN/OBSTRUCT	12	14	-2	-14%
ANIMAL RELATED INC ANTI-SOCIAL	3	3	0	0%
HOAX CALLS	7	3	4	133%
MALICIOUS / NUISANCE COMMS	43	40	3	8%
NOISE	9	4	5	125%
NEIGHBOURS	32	17	15	88%
ROWDY OR INCONSIDERATE BEHAV	198	215	-17	-8%
STREET DRINKING	3	4	-1	-25%
VEHICLE NUIS & INAPPROP VEH US	34	29	5	17%
Sum:	376	329	47	14%

