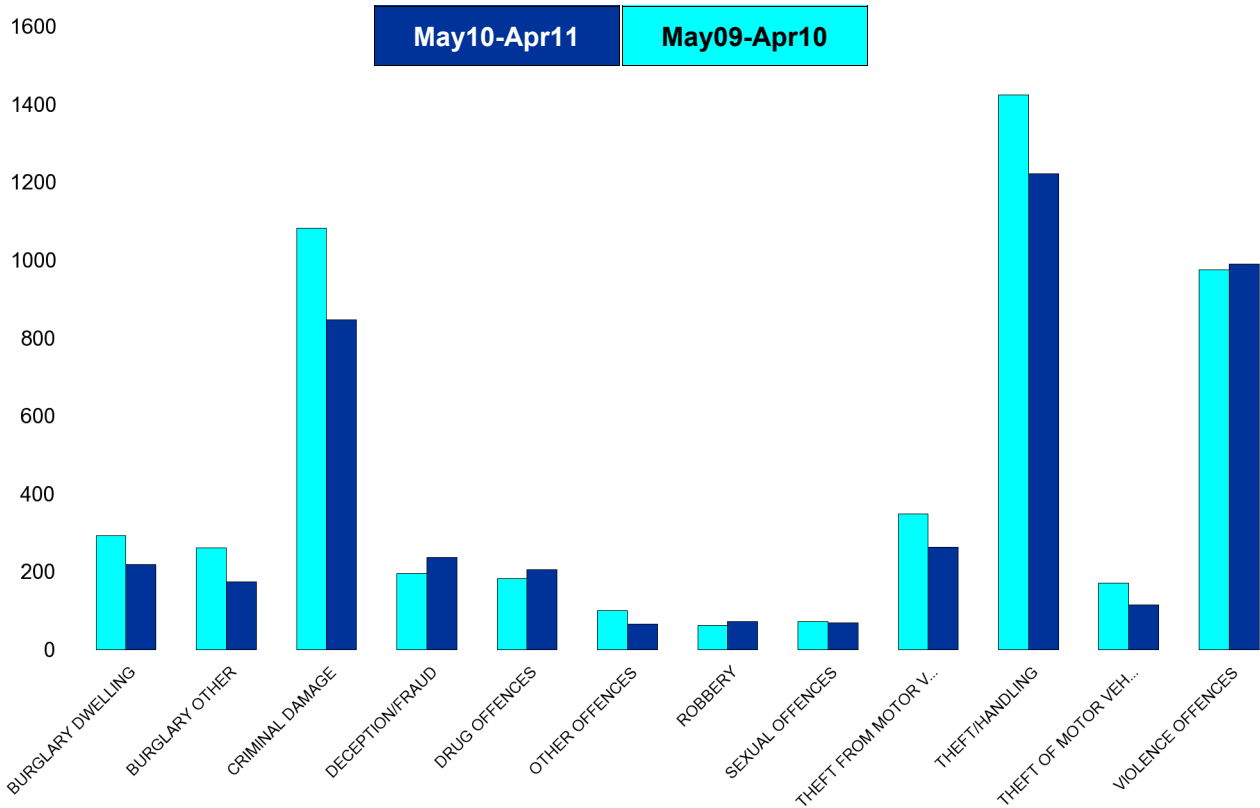


Kettering Town Forum Report

Kettering Town SCT - Crime

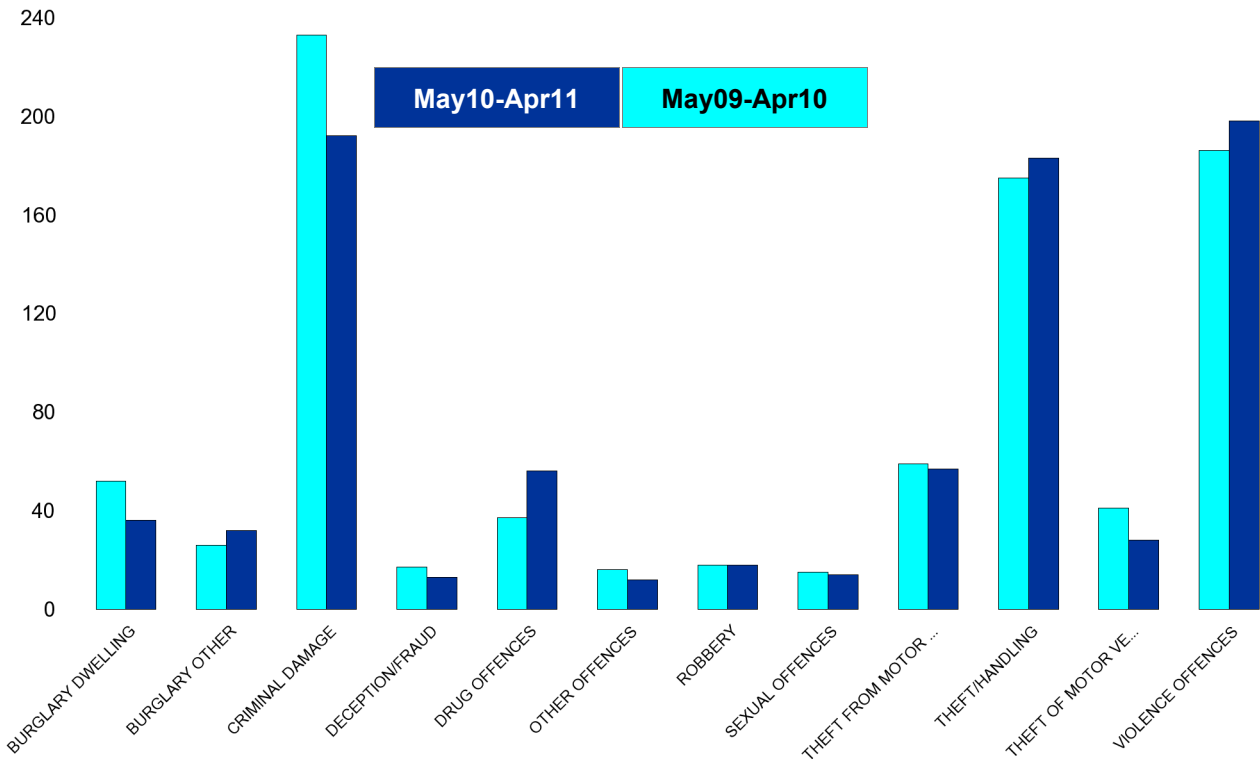
HO Group	No of Crimes (May10-Apr11)	No of Crimes (May09-Apr10)	+/- Crime	% Change	No of Cleared Up Crimes	Detection Rate (Past 12 Months)
BURGLARY DWELLING	219	293	-74	-25%	53	24%
BURGLARY OTHER	174	262	-88	-34%	25	14%
CRIMINAL DAMAGE	847	1083	-236	-22%	177	21%
DECEPTION/FRAUD	237	196	41	21%	69	29%
DRUG OFFENCES	206	183	23	13%	202	98%
OTHER OFFENCES	66	100	-34	-34%	55	83%
ROBBERY	73	63	10	16%	19	26%
SEXUAL OFFENCES	70	72	-2	-3%	38	54%
THEFT FROM MOTOR VEHICLES	263	349	-86	-25%	46	17%
THEFT/HANDLING	1222	1425	-203	-14%	433	35%
THEFT OF MOTOR VEHICLES	116	171	-55	-32%	29	25%
VIOLENCE OFFENCES	990	975	15	2%	407	41%
Sum:	4483	5172	-689	-13%	1553	35%



Kettering Town Forum Report

All Saints

HO Group	No of Crimes (May10-Apr11)	No of Crimes (May09-Apr10)	+/- Crime	% Change	No of Cleared Up Crimes	Detection Rate (Past 12 Months)
BURGLARY DWELLING	36	52	-16	-31%	7	19%
BURGLARY OTHER	32	26	6	23%	5	16%
CRIMINAL DAMAGE	192	233	-41	-18%	40	21%
DECEPTION/FRAUD	13	17	-4	-24%	3	23%
DRUG OFFENCES	56	37	19	51%	54	96%
OTHER OFFENCES	12	16	-4	-25%	10	83%
ROBBERY	18	18	0	0%	7	39%
SEXUAL OFFENCES	14	15	-1	-7%	2	14%
THEFT FROM MOTOR VEHICLES	57	59	-2	-3%	7	12%
THEFT/HANDLING	183	175	8	5%	46	25%
THEFT OF MOTOR VEHICLES	28	41	-13	-32%	10	36%
VIOLENCE OFFENCES	198	186	12	6%	95	48%
Sum:	839	875	-36	-4%	286	34%

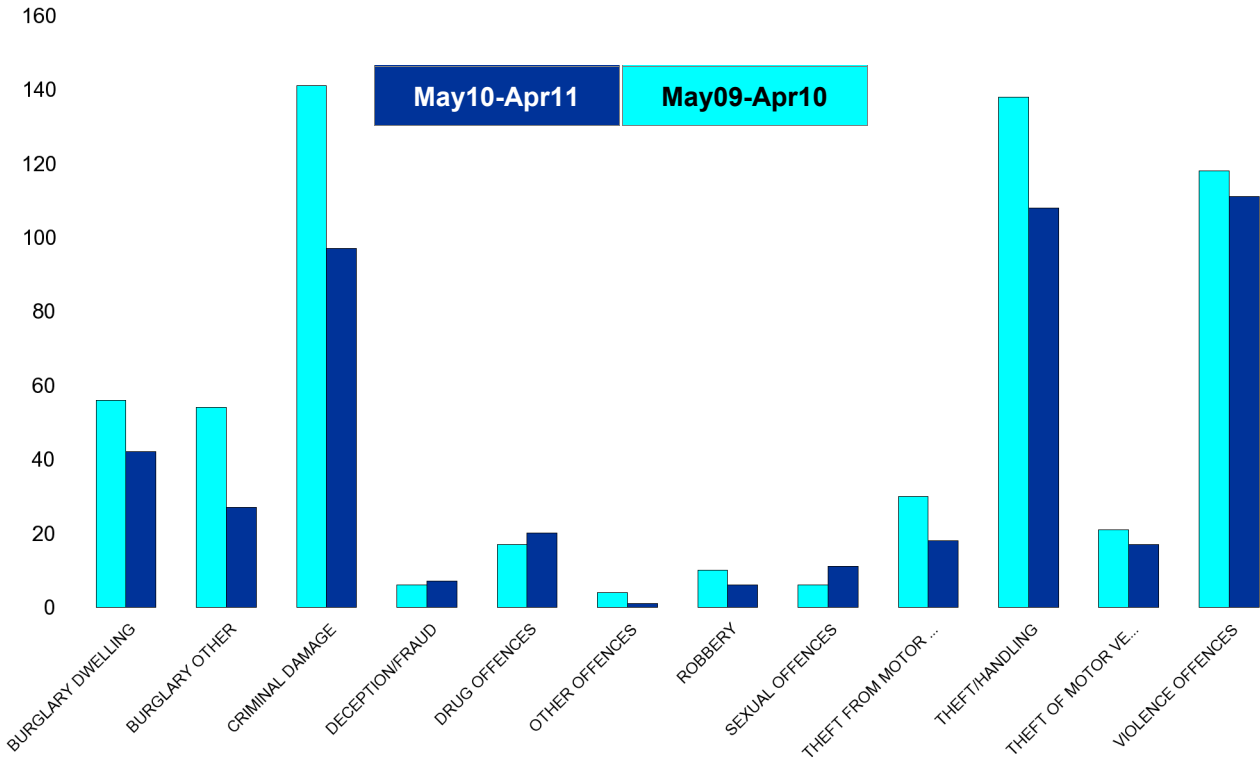


Kettering Town Forum Report

Avondale Grange

HO Group	No of Crimes (May10-Apr11)	No of Crimes (May09-Apr10)	+/- Crime	% Change
BURGLARY DWELLING	42	56	-14	-25%
BURGLARY OTHER	27	54	-27	-50%
CRIMINAL DAMAGE	97	141	-44	-31%
DECEPTION/FRAUD	7	6	1	17%
DRUG OFFENCES	20	17	3	18%
OTHER OFFENCES	1	4	-3	-75%
ROBBERY	6	10	-4	-40%
SEXUAL OFFENCES	11	6	5	83%
THEFT FROM MOTOR VEHICLES	18	30	-12	-40%
THEFT/HANDLING	108	138	-30	-22%
THEFT OF MOTOR VEHICLES	17	21	-4	-19%
VIOLENCE OFFENCES	111	118	-7	-6%
Sum:	465	601	-136	-23%

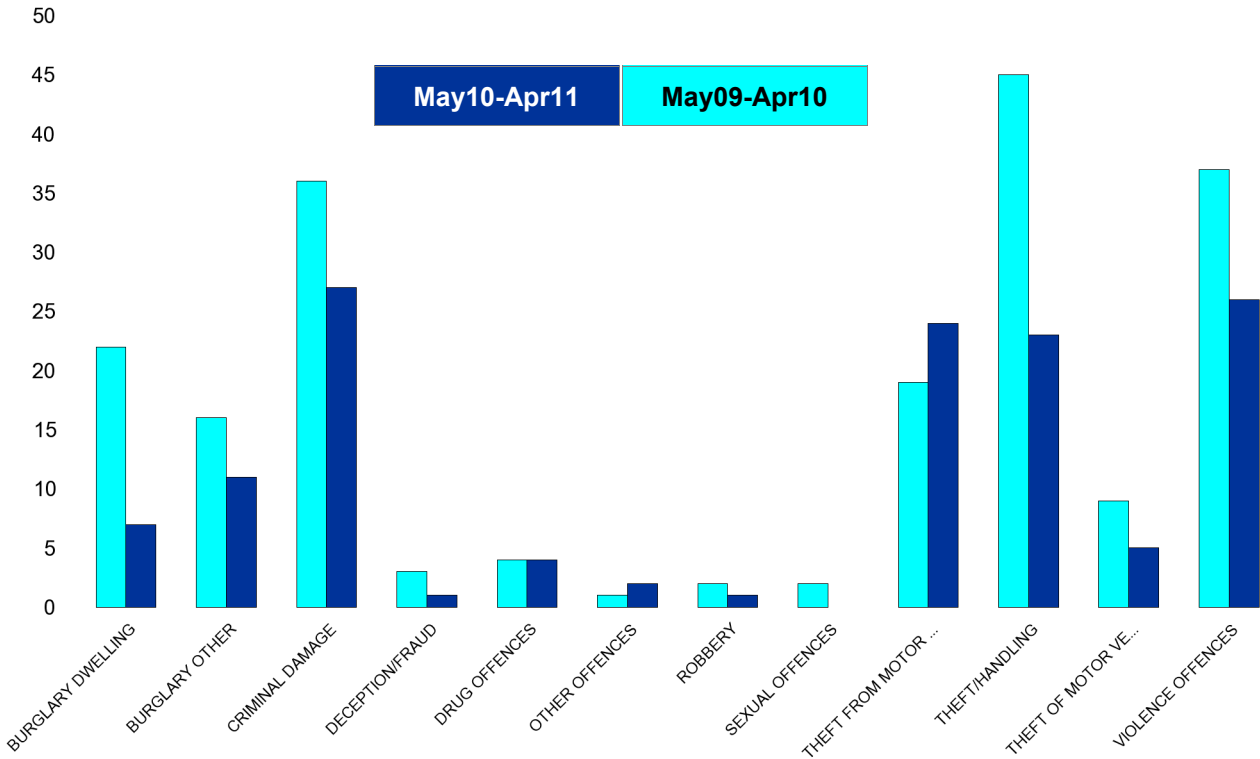
No of Cleared Up Crimes	Detection Rate (Past 12 Months)
8	19%
2	7%
18	19%
0	0%
19	95%
1	100%
1	17%
9	82%
0	0%
38	35%
5	29%
38	34%
139	30%



Kettering Town Forum Report

Brambleside

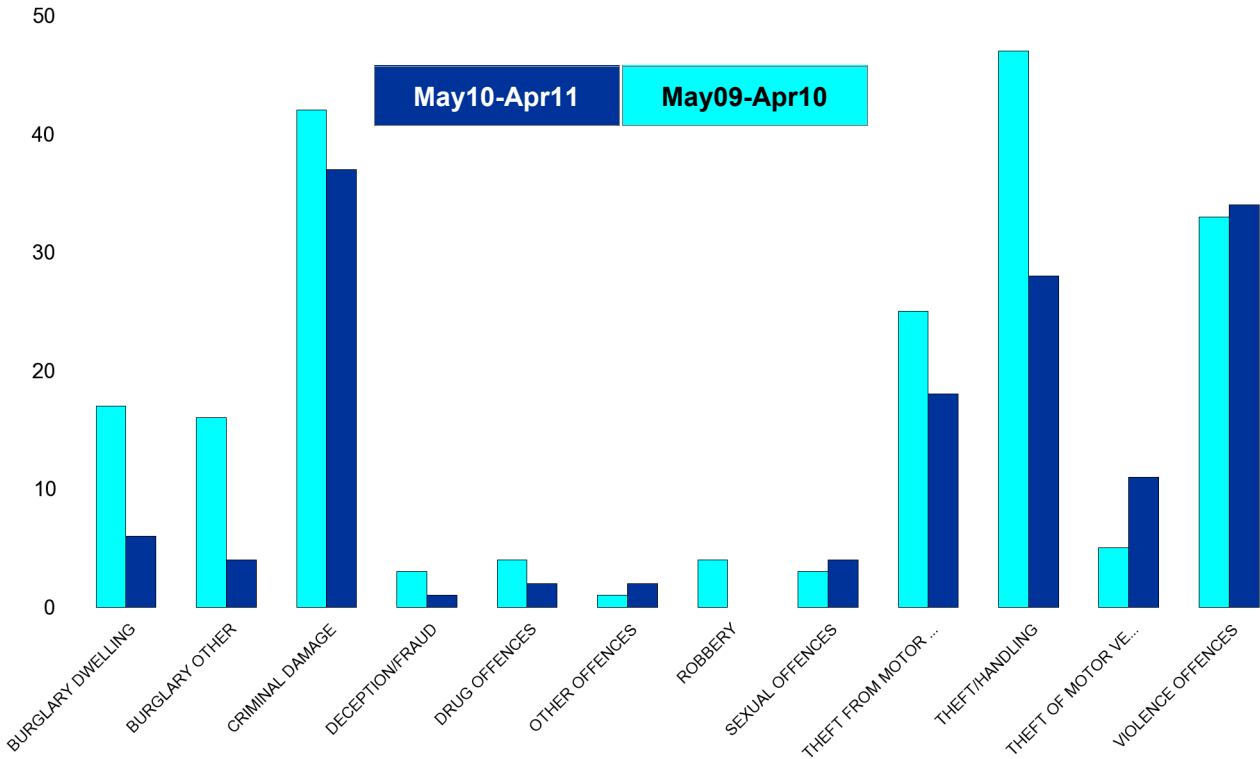
HO Group	No of Crimes (May10-Apr11)	No of Crimes (May09-Apr10)	+/- Crime	% Change	No of Cleared Up Crimes	Detection Rate (Past 12 Months)
BURGLARY DWELLING	7	22	-15	-68%	2	29%
BURGLARY OTHER	11	16	-5	-31%	0	0%
CRIMINAL DAMAGE	27	36	-9	-25%	2	7%
DECEPTION/FRAUD	1	3	-2	-67%	0	0%
DRUG OFFENCES	4	4	0	0%	4	100%
OTHER OFFENCES	2	1	1	100%	1	50%
ROBBERY	1	2	-1	-50%	0	0%
SEXUAL OFFENCES	0	2	-2	-100%	0	0%
THEFT FROM MOTOR VEHICLES	24	19	5	26%	6	25%
THEFT/HANDLING	23	45	-22	-49%	3	13%
THEFT OF MOTOR VEHICLES	5	9	-4	-44%	2	40%
VIOLENCE OFFENCES	26	37	-11	-30%	8	31%
Sum:	131	196	-65	-33%	28	21%



Kettering Town Forum Report

Ise Lodge

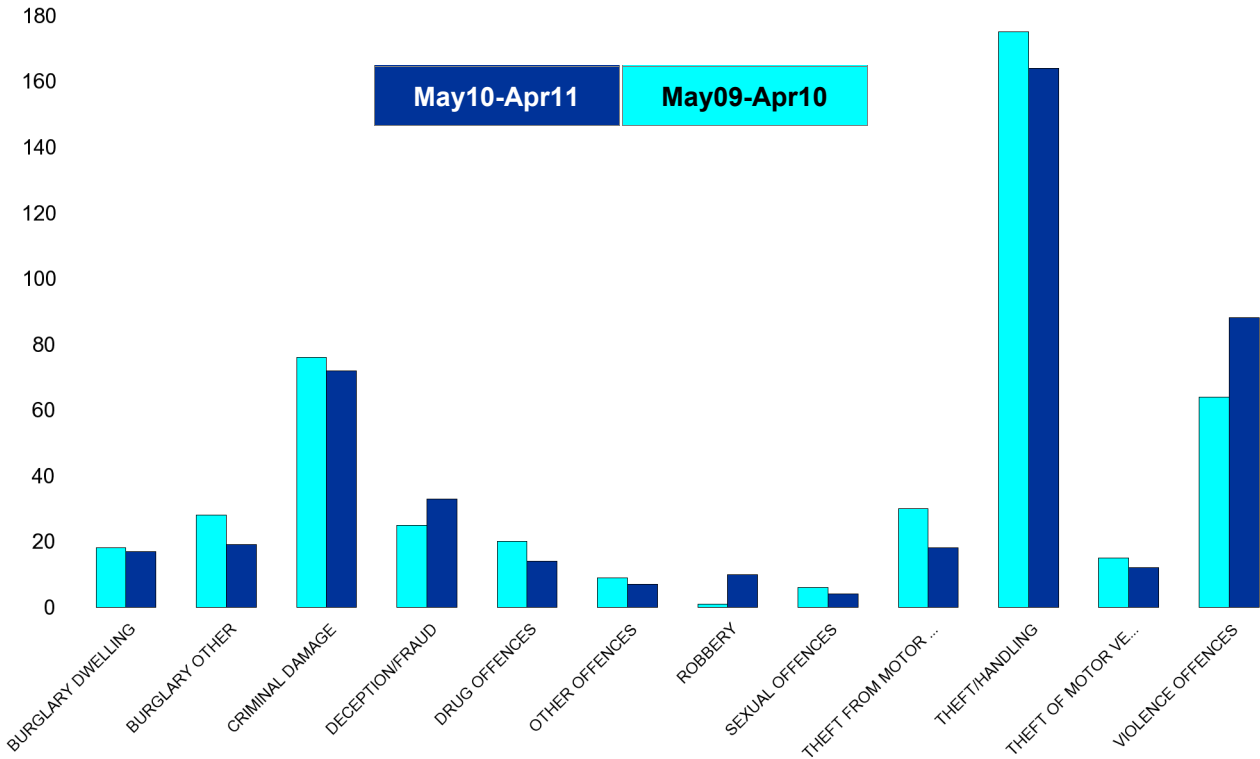
HO Group	No of Crimes (May10-Apr11)	No of Crimes (May09-Apr10)	+/- Crime	% Change	No of Cleared Up Crimes	Detection Rate (Past 12 Months)
BURGLARY DWELLING	6	17	-11	-65%	0	0%
BURGLARY OTHER	4	16	-12	-75%	0	0%
CRIMINAL DAMAGE	37	42	-5	-12%	6	16%
DECEPTION/FRAUD	1	3	-2	-67%	0	0%
DRUG OFFENCES	2	4	-2	-50%	2	100%
OTHER OFFENCES	2	1	1	100%	1	50%
ROBBERY	0	4	-4	-100%	0	0%
SEXUAL OFFENCES	4	3	1	33%	0	0%
THEFT FROM MOTOR VEHICLES	18	25	-7	-28%	0	0%
THEFT/HANDLING	28	47	-19	-40%	9	32%
THEFT OF MOTOR VEHICLES	11	5	6	120%	0	0%
VIOLENCE OFFENCES	34	33	1	3%	12	35%
Sum:	147	200	-53	-27%	30	20%



Kettering Town Forum Report

Northfield

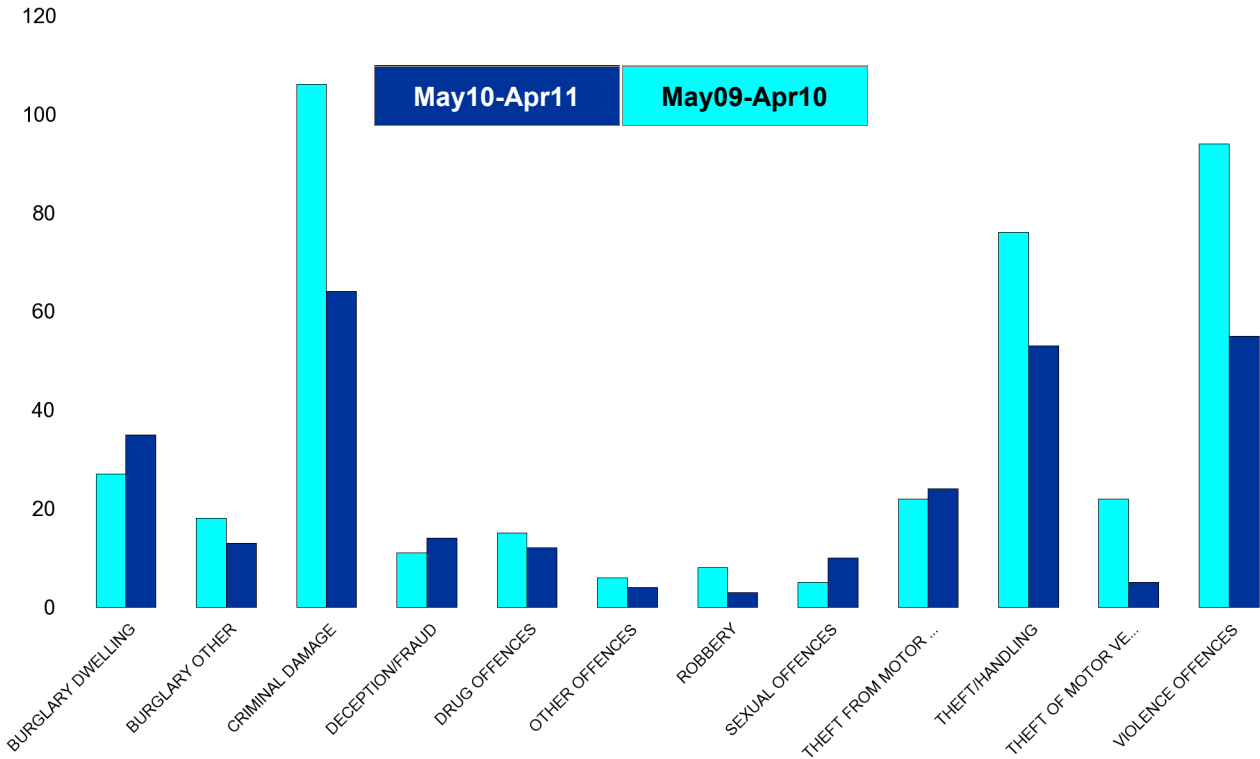
HO Group	No of Crimes (May10-Apr11)	No of Crimes (May09-Apr10)	+/- Crime	% Change	No of Cleared Up Crimes	Detection Rate (Past 12 Months)
BURGLARY DWELLING	17	18	-1	-6%	4	24%
BURGLARY OTHER	19	28	-9	-32%	4	21%
CRIMINAL DAMAGE	72	76	-4	-5%	12	17%
DECEPTION/FRAUD	33	25	8	32%	6	18%
DRUG OFFENCES	14	20	-6	-30%	13	93%
OTHER OFFENCES	7	9	-2	-22%	5	71%
ROBBERY	10	1	9	900%	2	20%
SEXUAL OFFENCES	4	6	-2	-33%	2	50%
THEFT FROM MOTOR VEHICLES	18	30	-12	-40%	0	0%
THEFT/HANDLING	164	175	-11	-6%	81	49%
THEFT OF MOTOR VEHICLES	12	15	-3	-20%	3	25%
VIOLENCE OFFENCES	88	64	24	38%	33	38%
Sum:	458	467	-9	-2%	165	36%



Kettering Town Forum Report

Pipers Hill

HO Group	No of Crimes (May10-Apr11)	No of Crimes (May09-Apr10)	+/- Crime	% Change	No of Cleared Up Crimes	Detection Rate (Past 12 Months)
BURGLARY DWELLING	35	27	8	30%	11	31%
BURGLARY OTHER	13	18	-5	-28%	1	8%
CRIMINAL DAMAGE	64	106	-42	-40%	8	13%
DECEPTION/FRAUD	14	11	3	27%	2	14%
DRUG OFFENCES	12	15	-3	-20%	11	92%
OTHER OFFENCES	4	6	-2	-33%	4	100%
ROBBERY	3	8	-5	-63%	1	33%
SEXUAL OFFENCES	10	5	5	100%	7	70%
THEFT FROM MOTOR VEHICLES	24	22	2	9%	2	8%
THEFT/HANDLING	53	76	-23	-30%	11	21%
THEFT OF MOTOR VEHICLES	5	22	-17	-77%	1	20%
VIOLENCE OFFENCES	55	94	-39	-41%	22	40%
Sum:	292	410	-118	-29%	81	28%

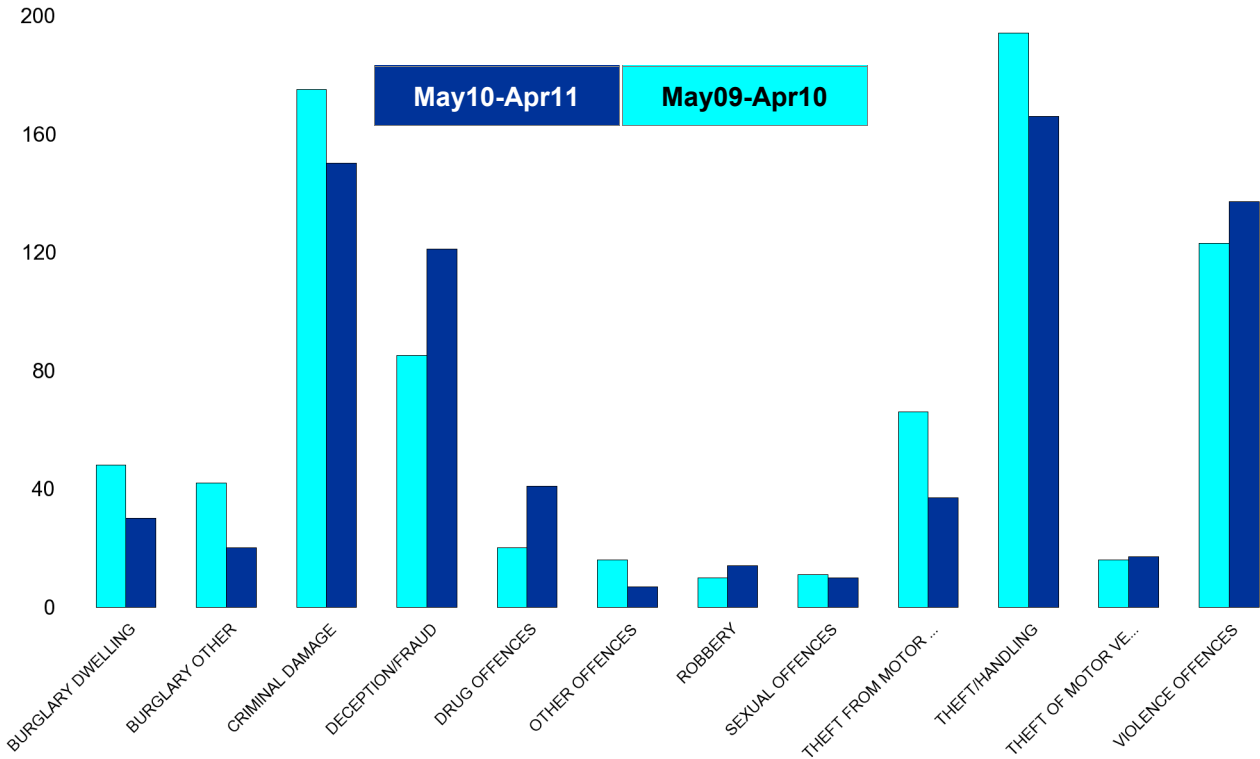


Kettering Town Forum Report

St Michaels and Wicksteed

HO Group	No of Crimes (May10-Apr11)	No of Crimes (May09-Apr10)	+/- Crime	% Change
BURGLARY DWELLING	30	48	-18	-38%
BURGLARY OTHER	20	42	-22	-52%
CRIMINAL DAMAGE	150	175	-25	-14%
DECEPTION/FRAUD	121	85	36	42%
DRUG OFFENCES	41	20	21	105%
OTHER OFFENCES	7	16	-9	-56%
ROBBERY	14	10	4	40%
SEXUAL OFFENCES	10	11	-1	-9%
THEFT FROM MOTOR VEHICLES	37	66	-29	-44%
THEFT/HANDLING	166	194	-28	-14%
THEFT OF MOTOR VEHICLES	17	16	1	6%
VIOLENCE OFFENCES	137	123	14	11%
Sum:	750	806	-56	-7%

No of Cleared Up Crimes	Detection Rate (Past 12 Months)
6	20%
5	25%
34	23%
24	20%
38	93%
5	71%
4	29%
8	80%
18	49%
45	27%
3	18%
51	37%
241	32%

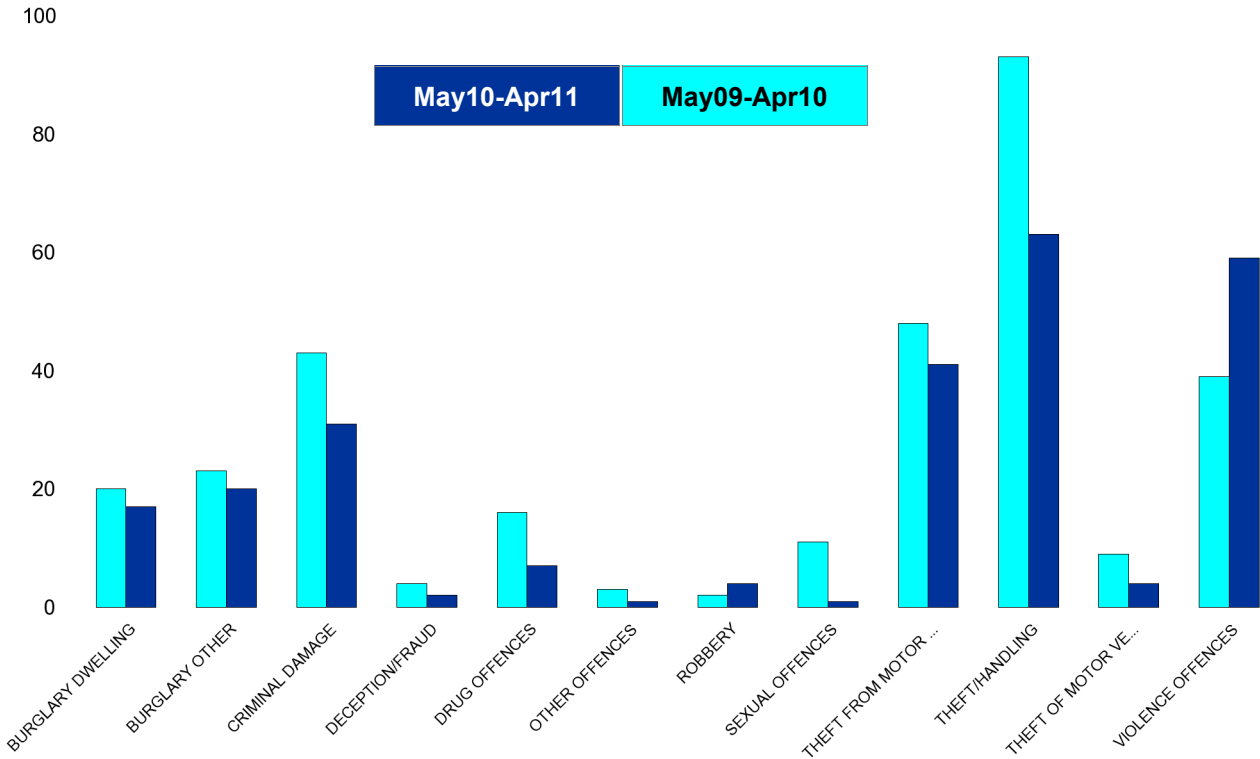


Kettering Town Forum Report

St Peters

HO Group	No of Crimes (May10-Apr11)	No of Crimes (May09-Apr10)	+/- Crime	% Change
BURGLARY DWELLING	17	20	-3	-15%
BURGLARY OTHER	20	23	-3	-13%
CRIMINAL DAMAGE	31	43	-12	-28%
DECEPTION/FRAUD	2	4	-2	-50%
DRUG OFFENCES	7	16	-9	-56%
OTHER OFFENCES	1	3	-2	-67%
ROBBERY	4	2	2	100%
SEXUAL OFFENCES	1	11	-10	-91%
THEFT FROM MOTOR VEHICLES	41	48	-7	-15%
THEFT/HANDLING	63	93	-30	-32%
THEFT OF MOTOR VEHICLES	4	9	-5	-56%
VIOLENCE OFFENCES	59	39	20	51%
Sum:	250	311	-61	-20%

No of Cleared Up Crimes	Detection Rate (Past 12 Months)
1	6%
3	15%
9	29%
0	0%
8	114%
1	100%
3	75%
4	400%
5	12%
8	13%
1	25%
26	44%
69	28%

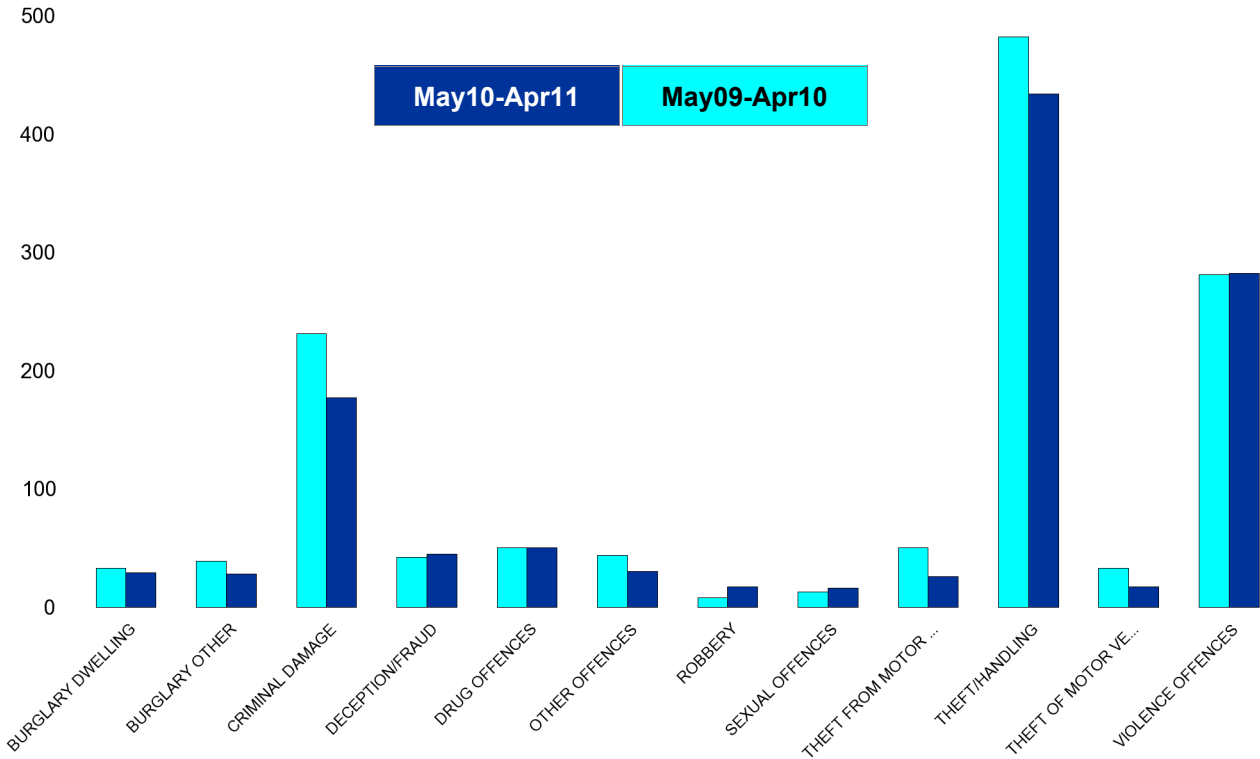


Kettering Town Forum Report

William Knibb

HO Group	No of Crimes (May10-Apr11)	No of Crimes (May09-Apr10)	+/- Crime	% Change
BURGLARY DWELLING	29	33	-4	-12%
BURGLARY OTHER	28	39	-11	-28%
CRIMINAL DAMAGE	177	231	-54	-23%
DECEPTION/FRAUD	45	42	3	7%
DRUG OFFENCES	50	50	0	0%
OTHER OFFENCES	30	44	-14	-32%
ROBBERY	17	8	9	113%
SEXUAL OFFENCES	16	13	3	23%
THEFT FROM MOTOR VEHICLES	26	50	-24	-48%
THEFT/HANDLING	434	482	-48	-10%
THEFT OF MOTOR VEHICLES	17	33	-16	-48%
VIOLENCE OFFENCES	282	281	1	0%
Sum:	1151	1306	-155	-12%

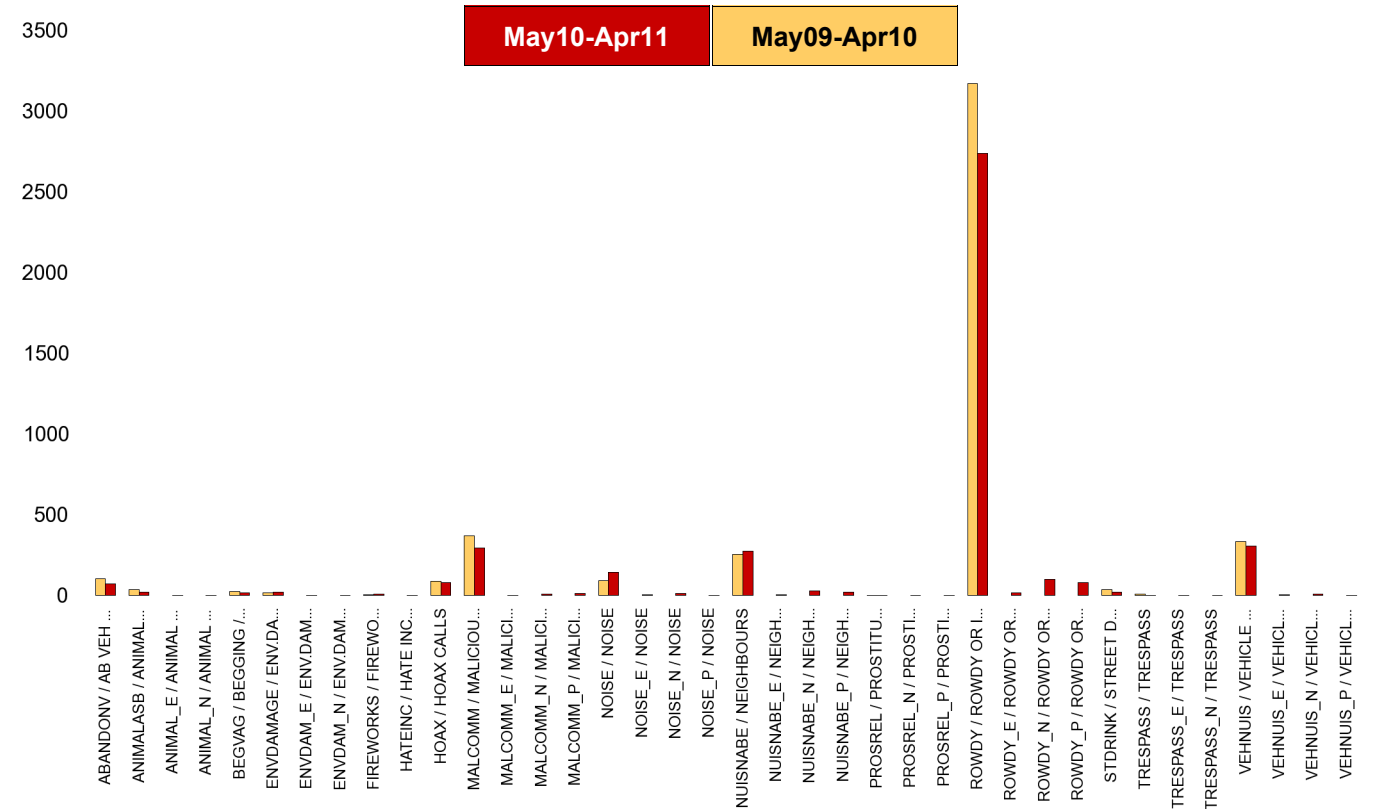
No of Cleared Up Crimes	Detection Rate (Past 12 Months)
14	48%
5	18%
48	27%
34	76%
53	106%
27	90%
1	6%
6	38%
8	31%
192	44%
4	24%
122	43%
514	45%



Kettering Town Forum Report

Kettering Town SCT - ASB

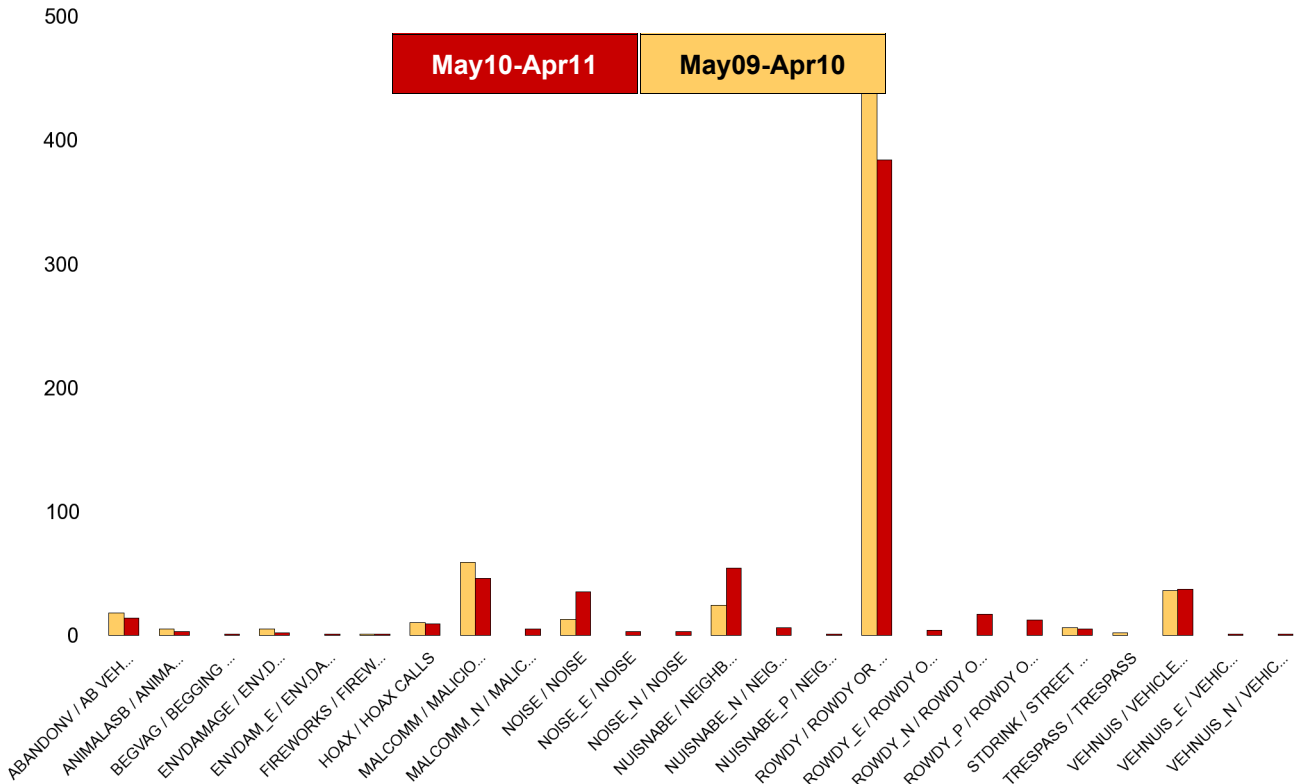
NSIR Closing Cat. 1 Desc	No of Incidents (May10-Apr11)	No of Incidents (May09-Apr10)	+/- Incidents	% Change Incidents
AB VEH NOT STOLEN/OBSTRUCT	74	106	-32	-30%
ANIMAL RELATED INC ANTI-SOCIAL	25	38	-13	-34%
BEGGING / VAGRANCY	16	27	-11	-41%
ENV.DAMAGE/ LITTER/ NEEDLES	26	17	9	53%
FIREWORK RELATED INCIDENTS	11	7	4	57%
HATE INC (NOT NOTIFIABLE CRIME	2	0	2	0%
HOAX CALLS	83	89	-6	-7%
MALICIOUS / NUISANCE COMMS	320	370	-50	-14%
NEIGHBOURS	328	257	71	28%
NOISE	165	93	72	77%
PROSTITUTION RELATED ACTIVITY	5	3	2	67%
ROWDY OR INCONSIDERATE BEHAV	2942	3176	-234	-7%
STREET DRINKING	22	39	-17	-44%
TRESPASS	4	11	-7	-64%
VEHICLE NUIS & INAPPROP VEH US	327	336	-9	-3%
Sum:	4350	4569	-219	-5%



Kettering Town Forum Report

All Saints

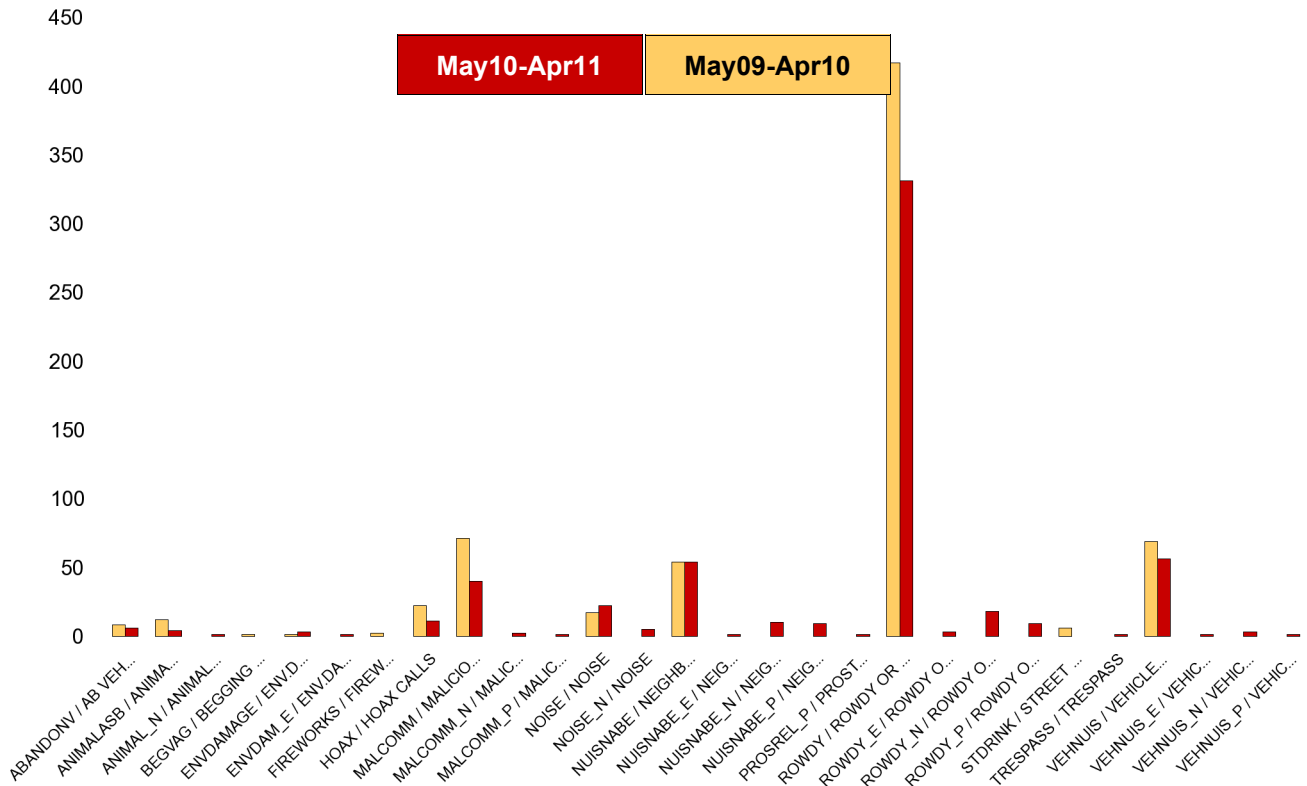
NSIR Closing Cat. 1 Desc	No of Incidents (May10-Apr11)	No of Incidents (May09-Apr10)	+/- Incidents	% Change Incidents
AB VEH NOT STOLEN/OBSTRUCT	14	18	-4	-22%
ANIMAL RELATED INC ANTI-SOCIAL	3	5	-2	-40%
BEGGING / VAGRANCY	1	0	1	0%
ENV.DAMAGE/ LITTER/ NEEDLES	3	5	-2	-40%
FIREWORK RELATED INCIDENTS	1	1	0	0%
HOAX CALLS	9	10	-1	-10%
MALICIOUS / NUISANCE COMMS	51	59	-8	-14%
NEIGHBOURS	61	24	37	154%
NOISE	41	13	28	215%
ROWDY OR INCONSIDERATE BEHAV	417	464	-47	-10%
STREET DRINKING	5	6	-1	-17%
TRESPASS	0	2	-2	-100%
VEHICLE NUIS & INAPPROP VEH US	39	36	3	8%
Sum:	645	643	2	0%



Kettering Town Forum Report

Avondale Grange

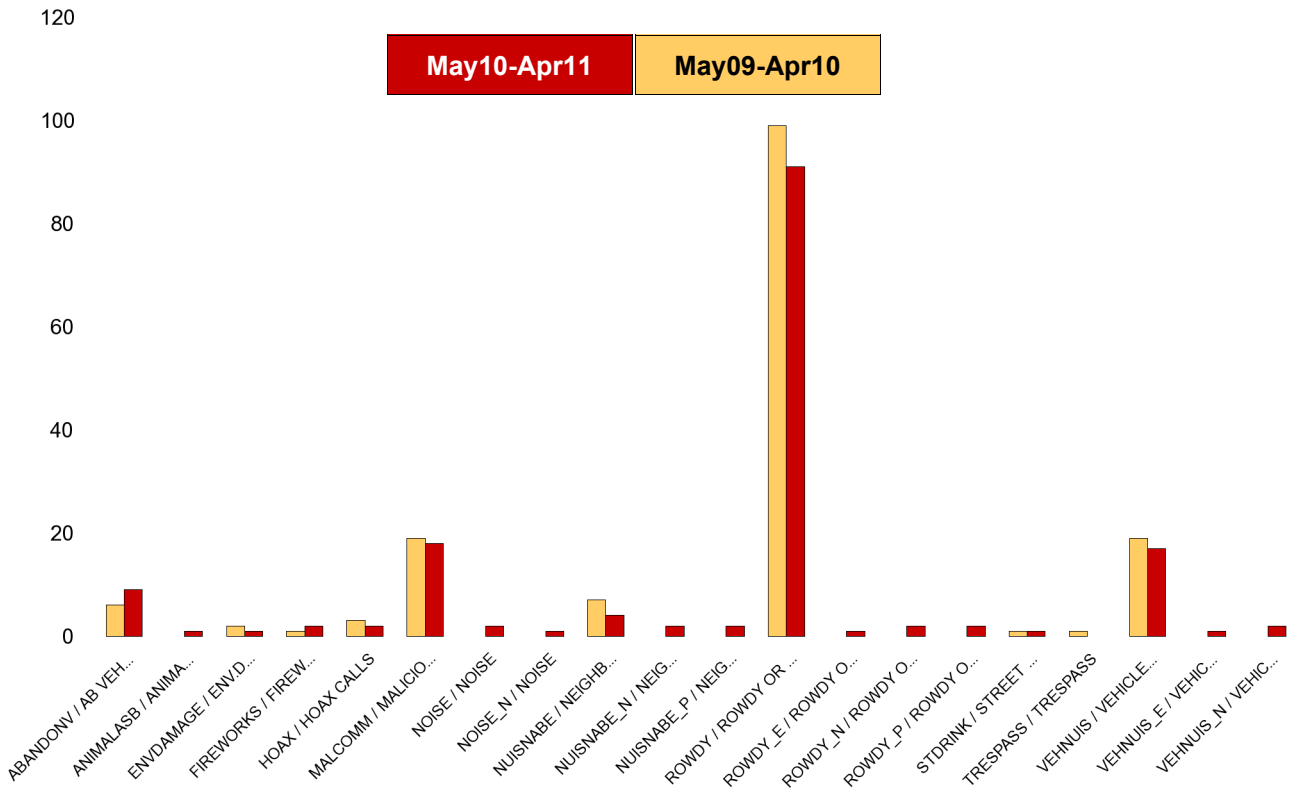
NSIR Closing Cat. 1 Desc	No of Incidents (May10-Apr11)	No of Incidents (May09-Apr10)	+/- Incidents	% Change Incidents
AB VEH NOT STOLEN/OBSTRUCT	6	8	-2	-25%
ANIMAL RELATED INC ANTI-SOCIAL	5	12	-7	-58%
BEGGING / VAGRANCY	0	1	-1	-100%
ENV.DAMAGE/ LITTER/ NEEDLES	4	1	3	300%
FIREWORK RELATED INCIDENTS	0	2	-2	-100%
HOAX CALLS	11	22	-11	-50%
MALICIOUS / NUISANCE COMMS	43	71	-28	-39%
NEIGHBOURS	74	54	20	37%
NOISE	27	17	10	59%
PROSTITUTION RELATED ACTIVITY	1	0	1	0%
ROWDY OR INCONSIDERATE BEHAV	361	417	-56	-13%
STREET DRINKING	0	6	-6	-100%
TRESPASS	1	0	1	0%
VEHICLE NUIS & INAPPROP VEH US	61	69	-8	-12%
Sum:	594	680	-86	-13%



Kettering Town Forum Report

Brambleside

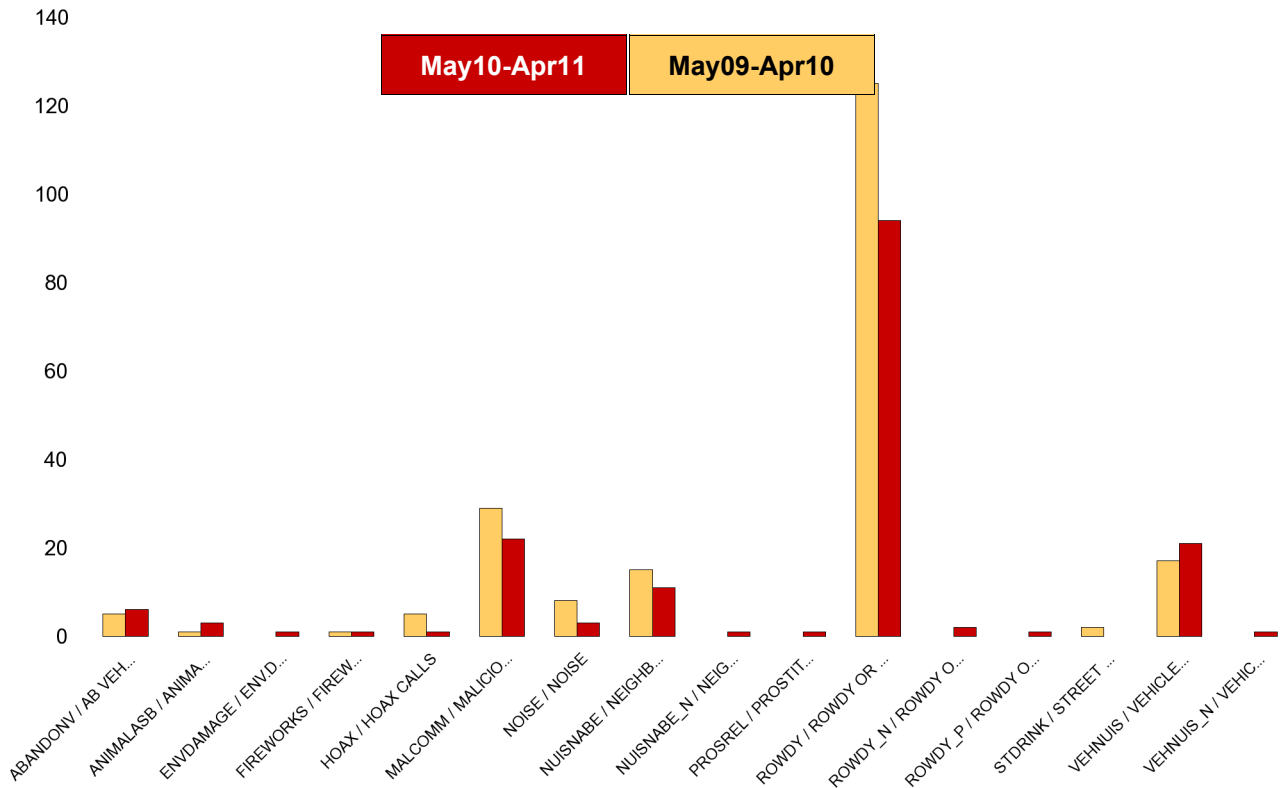
NSIR Closing Cat. 1 Desc	No of Incidents (May10-Apr11)	No of Incidents (May09-Apr10)	+/- Incidents	% Change Incidents
AB VEH NOT STOLEN/OBSTRUCT	9	6	3	50%
ANIMAL RELATED INC ANTI-SOCIAL	1	0	1	0%
ENV.DAMAGE/ LITTER/ NEEDLES	1	2	-1	-50%
FIREWORK RELATED INCIDENTS	2	1	1	100%
HOAX CALLS	2	3	-1	-33%
MALICIOUS / NUISANCE COMMS	18	19	-1	-5%
NEIGHBOURS	8	7	1	14%
NOISE	3	0	3	0%
ROWDY OR INCONSIDERATE BEHAV	96	99	-3	-3%
STREET DRINKING	1	1	0	0%
TRESPASS	0	1	-1	-100%
VEHICLE NUIS & INAPPROP VEH US	20	19	1	5%
Sum:	161	158	3	2%



Kettering Town Forum Report

Ise Lodge

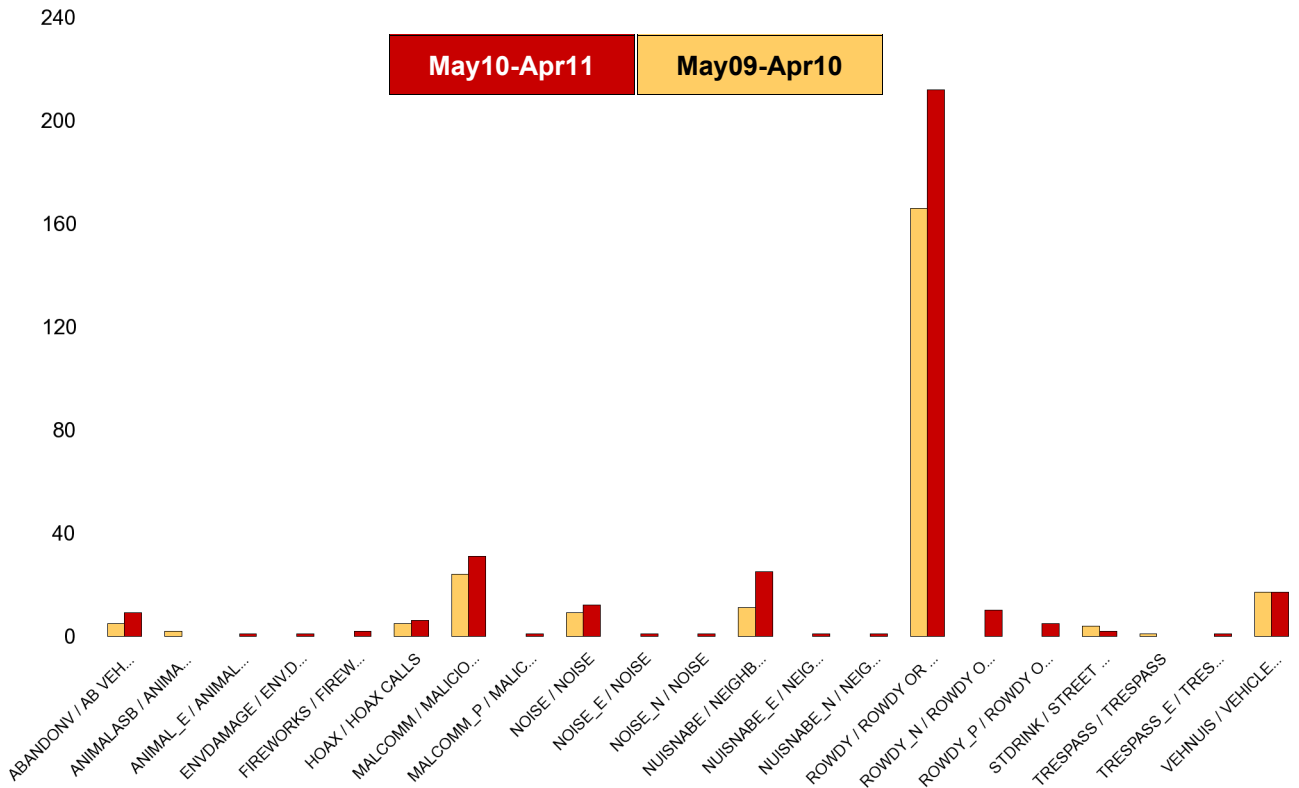
NSIR Closing Cat. 1 Desc	No of Incidents (May10-Apr11)	No of Incidents (May09-Apr10)	+/- Incidents	% Change Incidents
AB VEH NOT STOLEN/OBSTRUCT	6	5	1	20%
ANIMAL RELATED INC ANTI-SOCIAL	3	1	2	200%
ENV.DAMAGE/ LITTER/ NEEDLES	1	0	1	0%
FIREWORK RELATED INCIDENTS	1	1	0	0%
HOAX CALLS	1	5	-4	-80%
MALICIOUS / NUISANCE COMMS	22	29	-7	-24%
NEIGHBOURS	12	15	-3	-20%
NOISE	3	8	-5	-63%
PROSTITUTION RELATED ACTIVITY	1	0	1	0%
ROWDY OR INCONSIDERATE BEHAV	97	125	-28	-22%
STREET DRINKING	0	2	-2	-100%
VEHICLE NUIS & INAPPROP VEH US	22	17	5	29%
Sum:	169	208	-39	-19%



Kettering Town Forum Report

Northfield

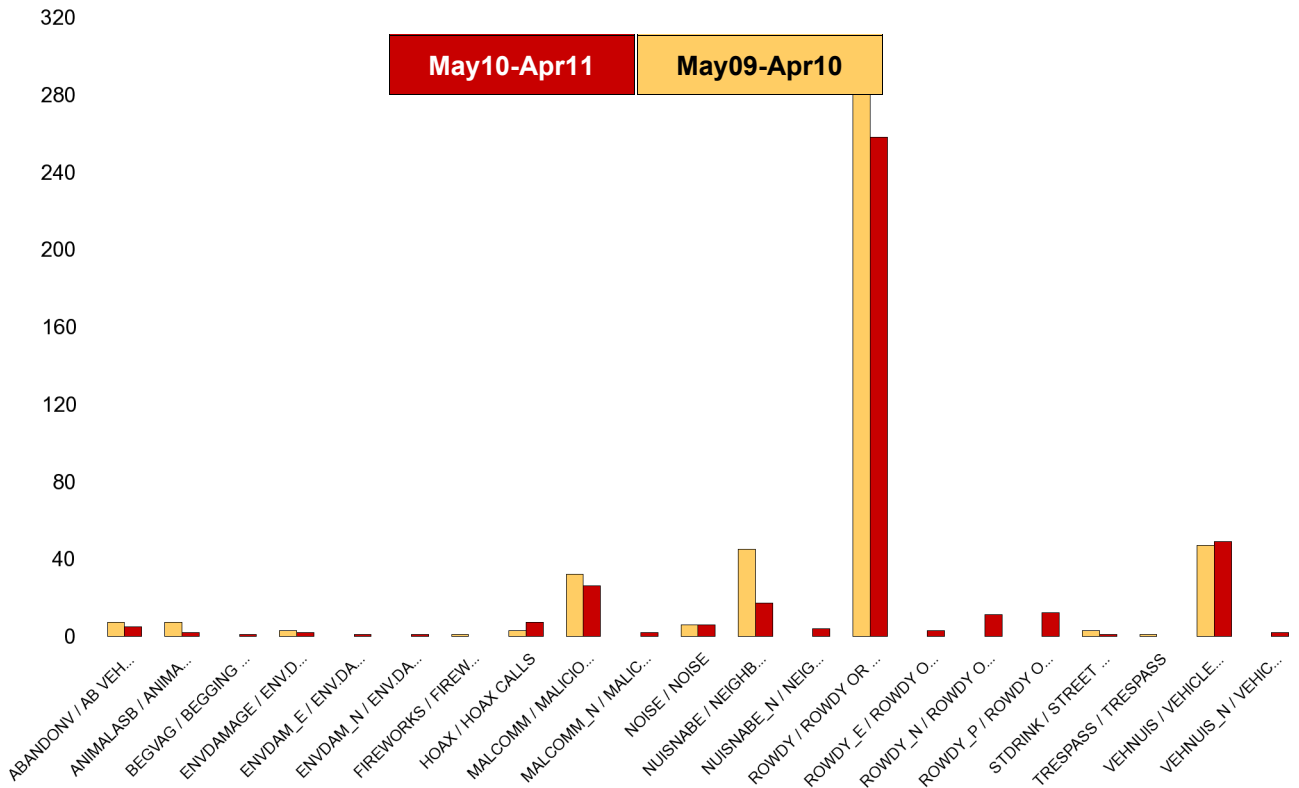
NSIR Closing Cat. 1 Desc	No of Incidents (May10-Apr11)	No of Incidents (May09-Apr10)	+/- Incidents	% Change Incidents
AB VEH NOT STOLEN/OBSTRUCT	9	5	4	80%
ANIMAL RELATED INC ANTI-SOCIAL	1	2	-1	-50%
ENV.DAMAGE/ LITTER/ NEEDLES	1	0	1	0%
FIREWORK RELATED INCIDENTS	2	0	2	0%
HOAX CALLS	6	5	1	20%
MALICIOUS / NUISANCE COMMS	32	24	8	33%
NEIGHBOURS	27	11	16	145%
NOISE	14	9	5	56%
ROWDY OR INCONSIDERATE BEHAV	227	166	61	37%
STREET DRINKING	2	4	-2	-50%
TRESPASS	1	1	0	0%
VEHICLE NUIS & INAPPROP VEH US	17	17	0	0%
Sum:	339	244	95	39%



Kettering Town Forum Report

Pipers Hill

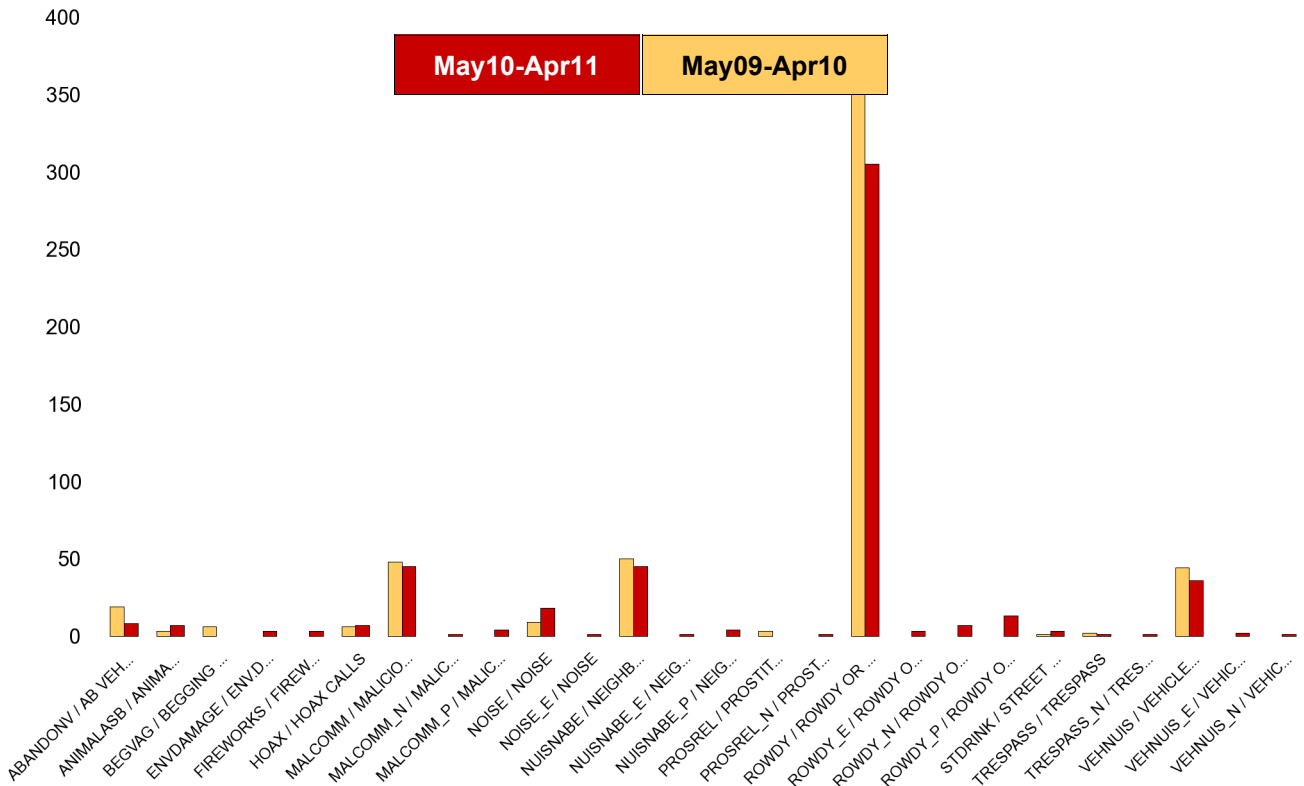
NSIR Closing Cat. 1 Desc	No of Incidents (May10-Apr11)	No of Incidents (May09-Apr10)	+/- Incidents	% Change Incidents
AB VEH NOT STOLEN/OBSTRUCT	5	7	-2	-29%
ANIMAL RELATED INC ANTI-SOCIAL	2	7	-5	-71%
BEGGING / VAGRANCY	1	0	1	0%
ENV.DAMAGE/ LITTER/ NEEDLES	4	3	1	33%
FIREWORK RELATED INCIDENTS	0	1	-1	-100%
HOAX CALLS	7	3	4	133%
MALICIOUS / NUISANCE COMMS	28	32	-4	-13%
NEIGHBOURS	21	45	-24	-53%
NOISE	6	6	0	0%
ROWDY OR INCONSIDERATE BEHAV	284	297	-13	-4%
STREET DRINKING	1	3	-2	-67%
TRESPASS	0	1	-1	-100%
VEHICLE NUIS & INAPPROP VEH US	51	47	4	9%
Sum:	410	452	-42	-9%



Kettering Town Forum Report

St Michaels and Wicksteed

NSIR Closing Cat. 1 Desc	No of Incidents (May10-Apr11)	No of Incidents (May09-Apr10)	+/- Incidents	% Change Incidents
AB VEH NOT STOLEN/OBSTRUCT	8	19	-11	-58%
ANIMAL RELATED INC ANTI-SOCIAL	7	3	4	133%
BEGGING / VAGRANCY	0	6	-6	-100%
ENV.DAMAGE/ LITTER/ NEEDLES	3	0	3	0%
FIREWORK RELATED INCIDENTS	3	0	3	0%
HOAX CALLS	7	6	1	17%
MALICIOUS / NUISANCE COMMS	50	48	2	4%
NEIGHBOURS	50	50	0	0%
NOISE	19	9	10	111%
PROSTITUTION RELATED ACTIVITY	1	3	-2	-67%
ROWDY OR INCONSIDERATE BEHAV	328	386	-58	-15%
STREET DRINKING	3	1	2	200%
TRESPASS	2	2	0	0%
VEHICLE NUIS & INAPPROP VEH US	39	44	-5	-11%
Sum:	520	577	-57	-10%



Kettering Town Forum Report

William Knibb

NSIR Closing Cat. 1 Desc	No of Incidents (May10-Apr11)	No of Incidents (May09-Apr10)	+/- Incidents	% Change Incidents
AB VEH NOT STOLEN/OBSTRUCT	7	27	-20	-74%
ANIMAL RELATED INC ANTI-SOCIAL	2	3	-1	-33%
BEGGING / VAGRANCY	14	20	-6	-30%
ENV.DAMAGE/ LITTER/ NEEDLES	4	4	0	0%
FIREWORK RELATED INCIDENTS	2	1	1	100%
HATE INC (NOT NOTIFIABLE CRIME	2	0	2	0%
HOAX CALLS	36	33	3	9%
MALICIOUS / NUISANCE COMMS	63	67	-4	-6%
NEIGHBOURS	42	46	-4	-9%
NOISE	34	28	6	21%
PROSTITUTION RELATED ACTIVITY	1	0	1	0%
ROWDY OR INCONSIDERATE BEHAV	977	1098	-121	-11%
STREET DRINKING	10	15	-5	-33%
TRESPASS	0	3	-3	-100%
VEHICLE NUIS & INAPPROP VEH US	50	60	-10	-17%
Sum:	1244	1405	-161	-11%

