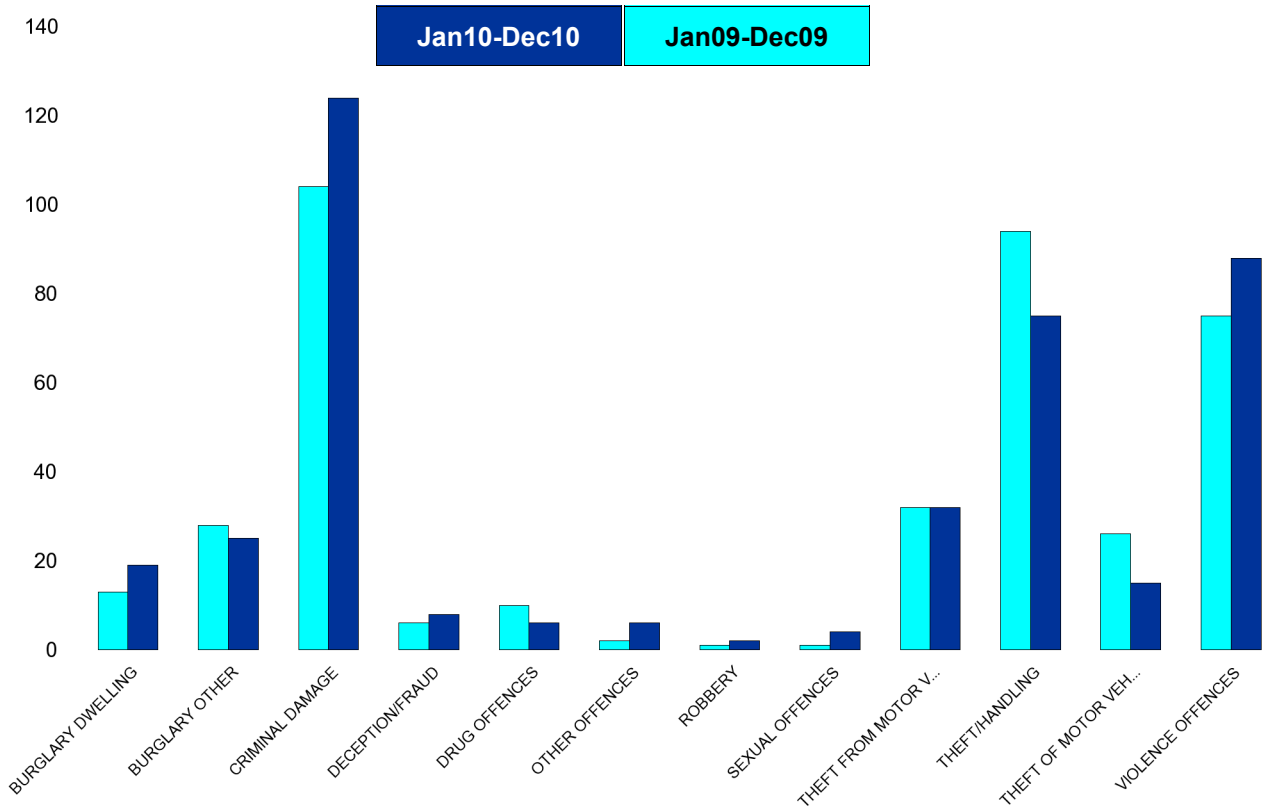


A6 Towns Forum Report

K006 & K007 Desborough - Crime

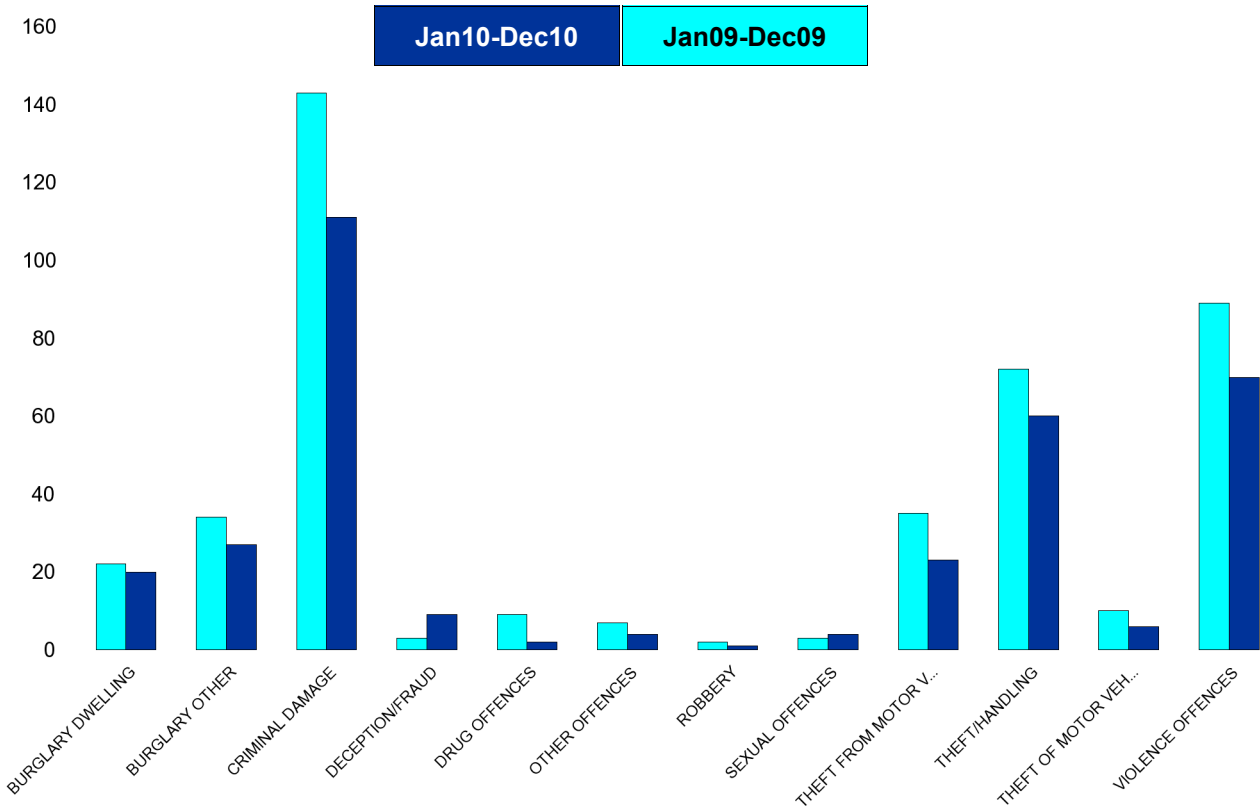
HO Group	No of Crimes (Jan10-Dec10)	No of Crimes (Jan09-Dec09)	+/- Crime	% Change	No of Cleared Up Crimes	Detection Rate (Past 12 Months)
BURGLARY DWELLING	19	13	6	46%	1	5%
BURGLARY OTHER	25	28	-3	-11%	2	8%
CRIMINAL DAMAGE	124	104	20	19%	8	6%
DECEPTION/FRAUD	8	6	2	33%	4	50%
DRUG OFFENCES	6	10	-4	-40%	4	67%
OTHER OFFENCES	6	2	4	200%	4	67%
ROBBERY	2	1	1	100%	0	0%
SEXUAL OFFENCES	4	1	3	300%	0	0%
THEFT FROM MOTOR VEHICLES	32	32	0	0%	0	0%
THEFT/HANDLING	75	94	-19	-20%	11	15%
THEFT OF MOTOR VEHICLES	15	26	-11	-42%	3	20%
VIOLENCE OFFENCES	88	75	13	17%	36	41%
Sum:	404	392	12	3%	73	18%



A6 Towns Forum Report

K012 Rothwell - Crime

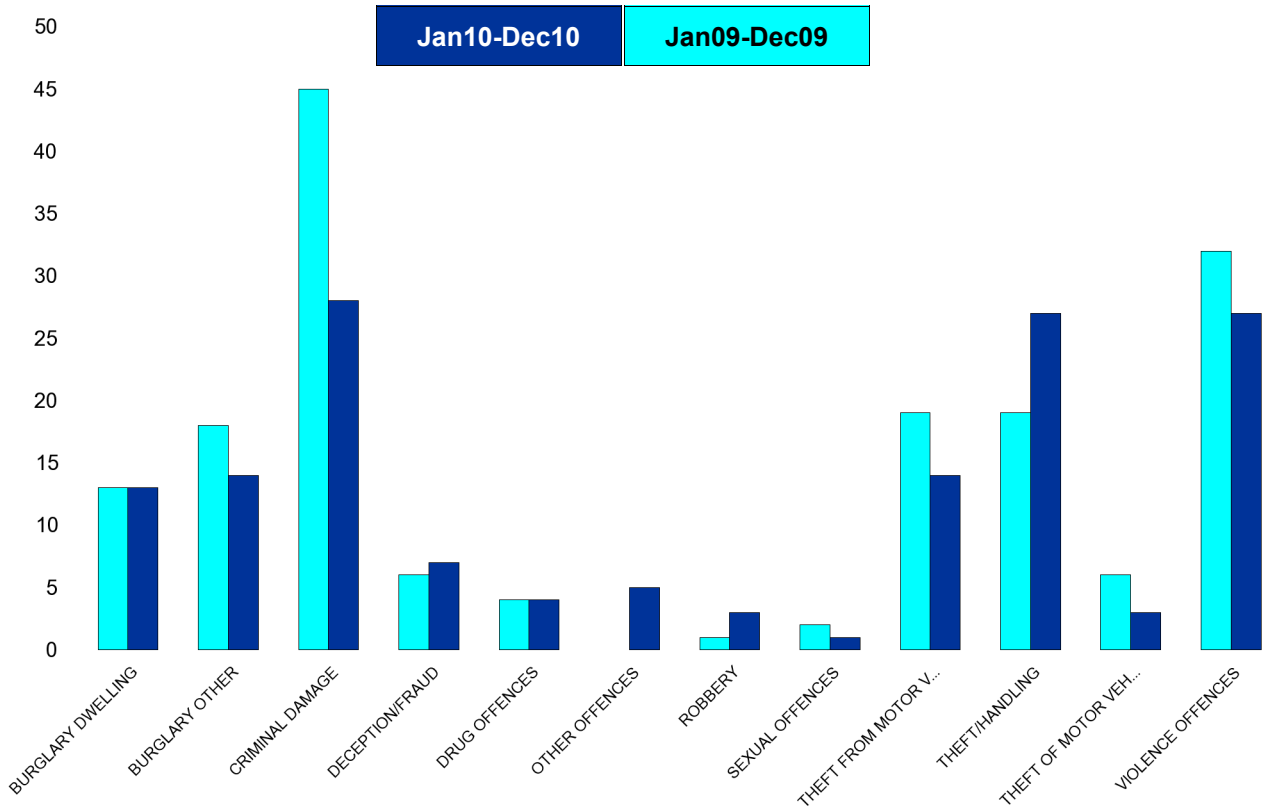
HO Group	No of Crimes (Jan10-Dec10)	No of Crimes (Jan09-Dec09)	+/- Crime	% Change	No of Cleared Up Crimes	Detection Rate (Past 12 Months)
BURGLARY DWELLING	20	22	-2	-9%	1	5%
BURGLARY OTHER	27	34	-7	-21%	1	4%
CRIMINAL DAMAGE	111	143	-32	-22%	27	24%
DECEPTION/FRAUD	9	3	6	200%	2	22%
DRUG OFFENCES	2	9	-7	-78%	2	100%
OTHER OFFENCES	4	7	-3	-43%	4	100%
ROBBERY	1	2	-1	-50%	0	0%
SEXUAL OFFENCES	4	3	1	33%	0	0%
THEFT FROM MOTOR VEHICLES	23	35	-12	-34%	0	0%
THEFT/HANDLING	60	72	-12	-17%	10	17%
THEFT OF MOTOR VEHICLES	6	10	-4	-40%	4	67%
VIOLENCE OFFENCES	70	89	-19	-21%	36	51%
Sum:	337	429	-92	-21%	87	26%



A6 Towns Forum Report

K003 Barton - Crime

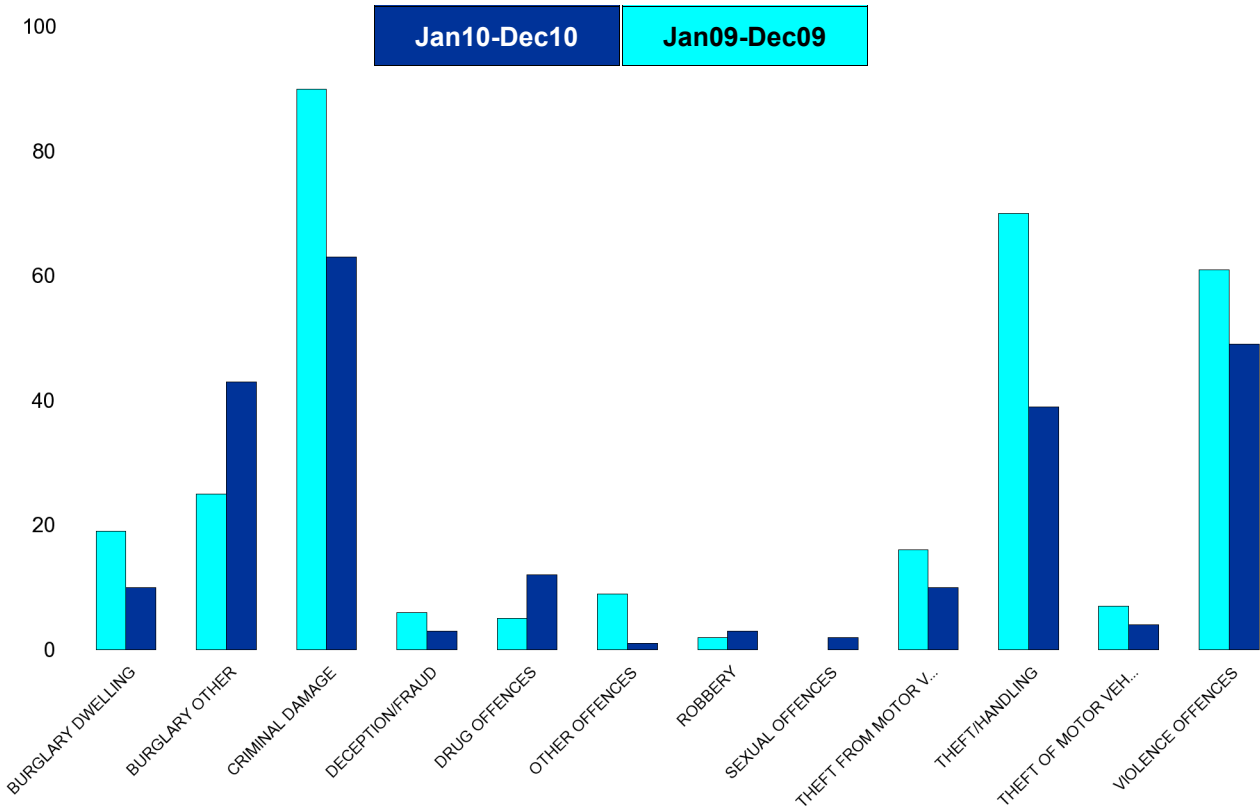
HO Group	No of Crimes (Jan10-Dec10)	No of Crimes (Jan09-Dec09)	+/- Crime	% Change	No of Cleared Up Crimes	Detection Rate (Past 12 Months)
BURGLARY DWELLING	13	13	0	0%	1	8%
BURGLARY OTHER	14	18	-4	-22%	2	14%
CRIMINAL DAMAGE	28	45	-17	-38%	0	0%
DECEPTION/FRAUD	7	6	1	17%	1	14%
DRUG OFFENCES	4	4	0	0%	4	100%
OTHER OFFENCES	5	0	5	0%	4	80%
ROBBERY	3	1	2	200%	0	0%
SEXUAL OFFENCES	1	2	-1	-50%	1	100%
THEFT FROM MOTOR VEHICLES	14	19	-5	-26%	0	0%
THEFT/HANDLING	27	19	8	42%	2	7%
THEFT OF MOTOR VEHICLES	3	6	-3	-50%	1	33%
VIOLENCE OFFENCES	27	32	-5	-16%	10	37%
Sum:	146	165	-19	-12%	26	18%



A6 Towns Forum Report

K005 Burton Latimer - Crime

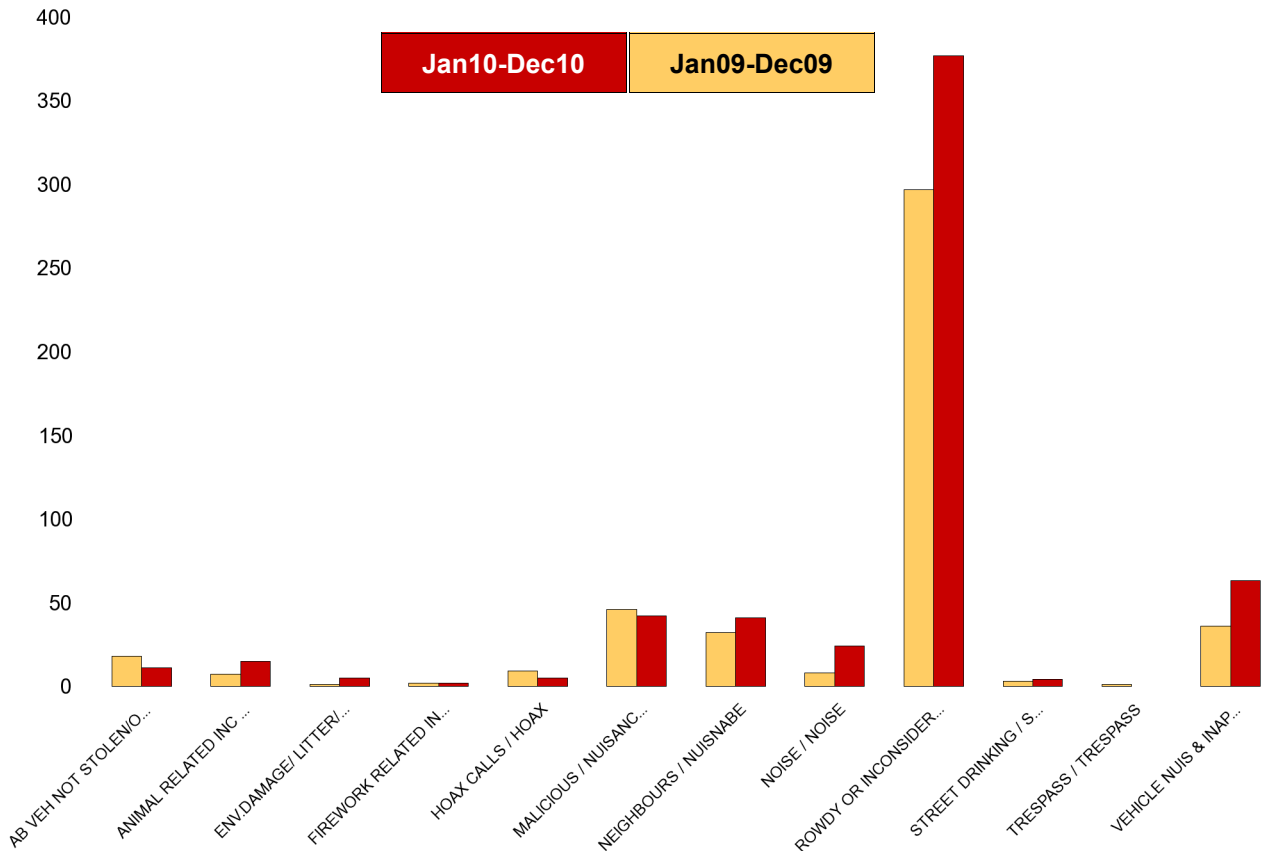
HO Group	No of Crimes (Jan10-Dec10)	No of Crimes (Jan09-Dec09)	+/- Crime	% Change	No of Cleared Up Crimes	Detection Rate (Past 12 Months)
BURGLARY DWELLING	10	19	-9	-47%	1	10%
BURGLARY OTHER	43	25	18	72%	11	26%
CRIMINAL DAMAGE	63	90	-27	-30%	9	14%
DECEPTION/FRAUD	3	6	-3	-50%	1	33%
DRUG OFFENCES	12	5	7	140%	12	100%
OTHER OFFENCES	1	9	-8	-89%	1	100%
ROBBERY	3	2	1	50%	0	0%
SEXUAL OFFENCES	2	0	2	#DIV/0	1	50%
THEFT FROM MOTOR VEHICLES	10	16	-6	-38%	0	0%
THEFT/HANDLING	39	70	-31	-44%	9	23%
THEFT OF MOTOR VEHICLES	4	7	-3	-43%	2	50%
VIOLENCE OFFENCES	49	61	-12	-20%	15	31%
Sum:	239	310	-71	-23%	62	26%



A6 Towns Forum Report

K006 & K007 Desborough ASB

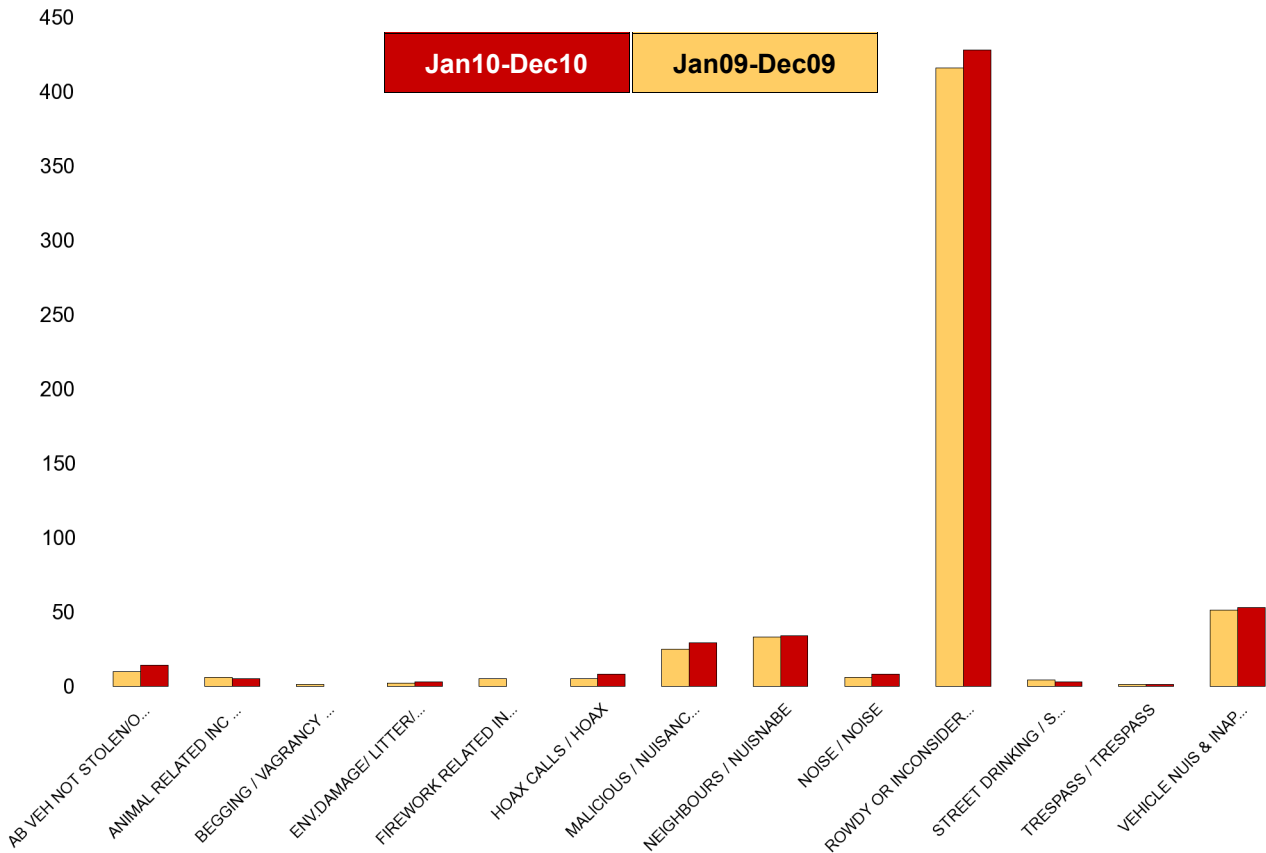
NSIR Closing Category 1 Desc	No of Incidents (Jan10-Dec10)	No of Incidents (Jan09-Dec09)	+/- Incidents	% Change Incidents
AB VEH NOT STOLEN/OBSTRUCT	11	18	-7	-39%
ANIMAL RELATED INC ANTI-SOCIAL	15	7	8	114%
ENV.DAMAGE/ LITTER/ NEEDLES	5	1	4	400%
FIREWORK RELATED INCIDENTS	2	2	0	0%
HOAX CALLS	5	9	-4	-44%
MALICIOUS / NUISANCE COMMS	42	46	-4	-9%
NOISE	24	8	16	200%
NEIGHBOURS	41	32	9	28%
ROWDY OR INCONSIDERATE BEHAV	377	297	80	27%
STREET DRINKING	4	3	1	33%
TRESPASS	0	1	-1	-100%
VEHICLE NUIS & INAPPROP VEH US	63	36	27	75%
Sum:	589	460	129	28%



A6 Towns Forum Report

K012 Rothwell ASB

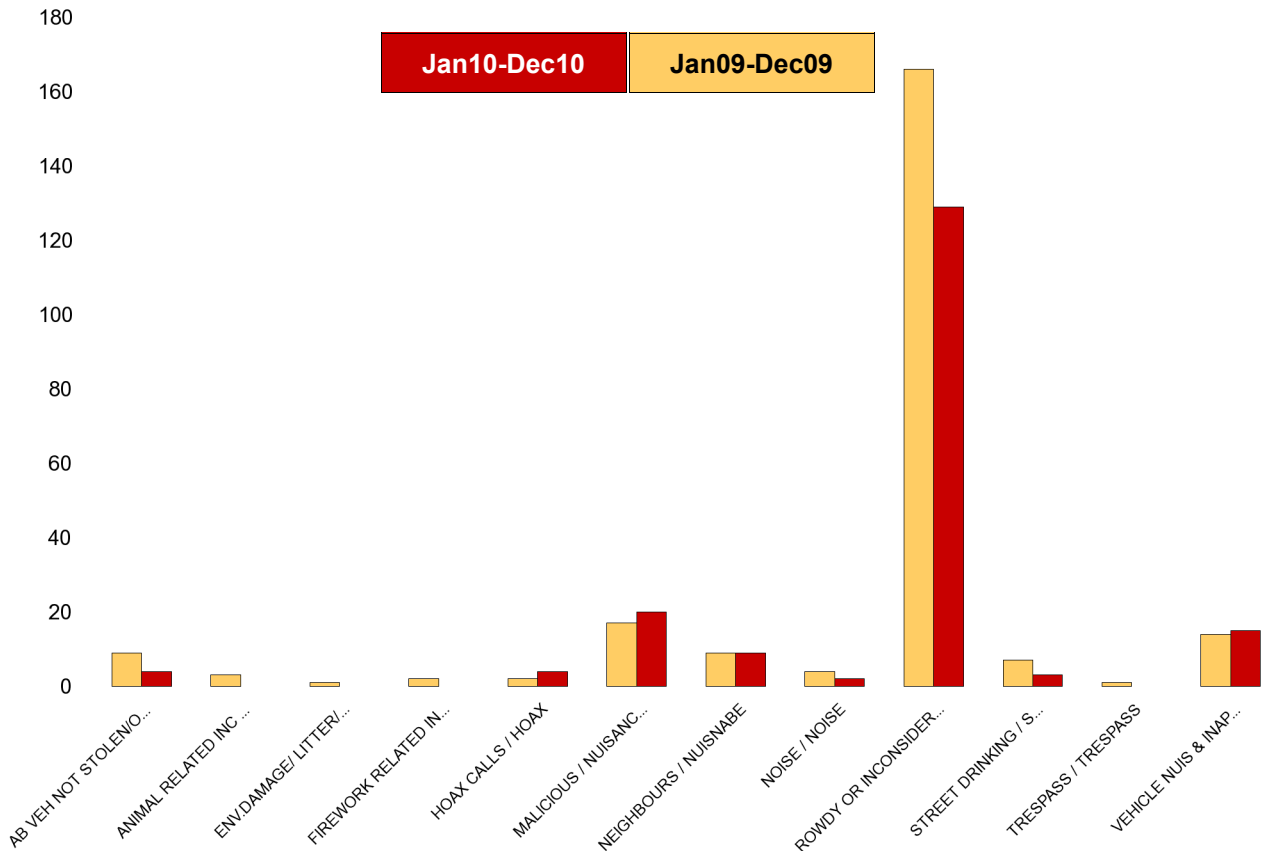
NSIR Closing Category 1 Desc	No of Incidents (Jan10-Dec10)	No of Incidents (Jan09-Dec09)	+/- Incidents	% Change Incidents
AB VEH NOT STOLEN/OBSTRUCT	14	10	4	40%
ANIMAL RELATED INC ANTI-SOCIAL	5	6	-1	-17%
BEGGING / VAGRANCY	0	1	-1	-100%
ENV.DAMAGE/ LITTER/ NEEDLES	3	2	1	50%
FIREWORK RELATED INCIDENTS	0	5	-5	-100%
HOAX CALLS	8	5	3	60%
MALICIOUS / NUISANCE COMMS	29	25	4	16%
NOISE	8	6	2	33%
NEIGHBOURS	34	33	1	3%
ROWDY OR INCONSIDERATE BEHAV	428	416	12	3%
STREET DRINKING	3	4	-1	-25%
TRESPASS	1	1	0	0%
VEHICLE NUIS & INAPPROP VEH US	53	51	2	4%
Sum:	586	565	21	4%



A6 Towns Forum Report

K003 Barton ASB

NSIR Closing Category 1 Desc	No of Incidents (Jan10-Dec10)	No of Incidents (Jan09-Dec09)	+/- Incidents	% Change Incidents
AB VEH NOT STOLEN/OBSTRUCT	4	9	-5	-56%
ANIMAL RELATED INC ANTI-SOCIAL	0	3	-3	-100%
ENV.DAMAGE/ LITTER/ NEEDLES	0	1	-1	-100%
FIREWORK RELATED INCIDENTS	0	2	-2	-100%
HOAX CALLS	4	2	2	100%
MALICIOUS / NUISANCE COMMS	20	17	3	18%
NOISE	2	4	-2	-50%
NEIGHBOURS	9	9	0	0%
ROWDY OR INCONSIDERATE BEHAV	129	166	-37	-22%
STREET DRINKING	3	7	-4	-57%
TRESPASS	0	1	-1	-100%
VEHICLE NUIS & INAPPROP VEH US	15	14	1	7%
Sum:	186	235	-49	-21%



A6 Towns Forum Report

K005 Latimer ASB

NSIR Closing Category 1 Desc	No of Incidents (Jan10-Dec10)	No of Incidents (Jan09-Dec09)	+/- Incidents	% Change Incidents
AB VEH NOT STOLEN/OBSTRUCT	15	13	2	15%
ANIMAL RELATED INC ANTI-SOCIAL	2	4	-2	-50%
FIREWORK RELATED INCIDENTS	1	0	1	0%
HOAX CALLS	7	3	4	133%
MALICIOUS / NUISANCE COMMS	46	37	9	24%
NOISE	7	7	0	0%
NEIGHBOURS	30	18	12	67%
ROWDY OR INCONSIDERATE BEHAV	220	231	-11	-5%
STREET DRINKING	2	4	-2	-50%
TRESPASS	0	1	-1	-100%
VEHICLE NUIS & INAPPROP VEH US	40	28	12	43%
Sum:	370	346	24	7%

