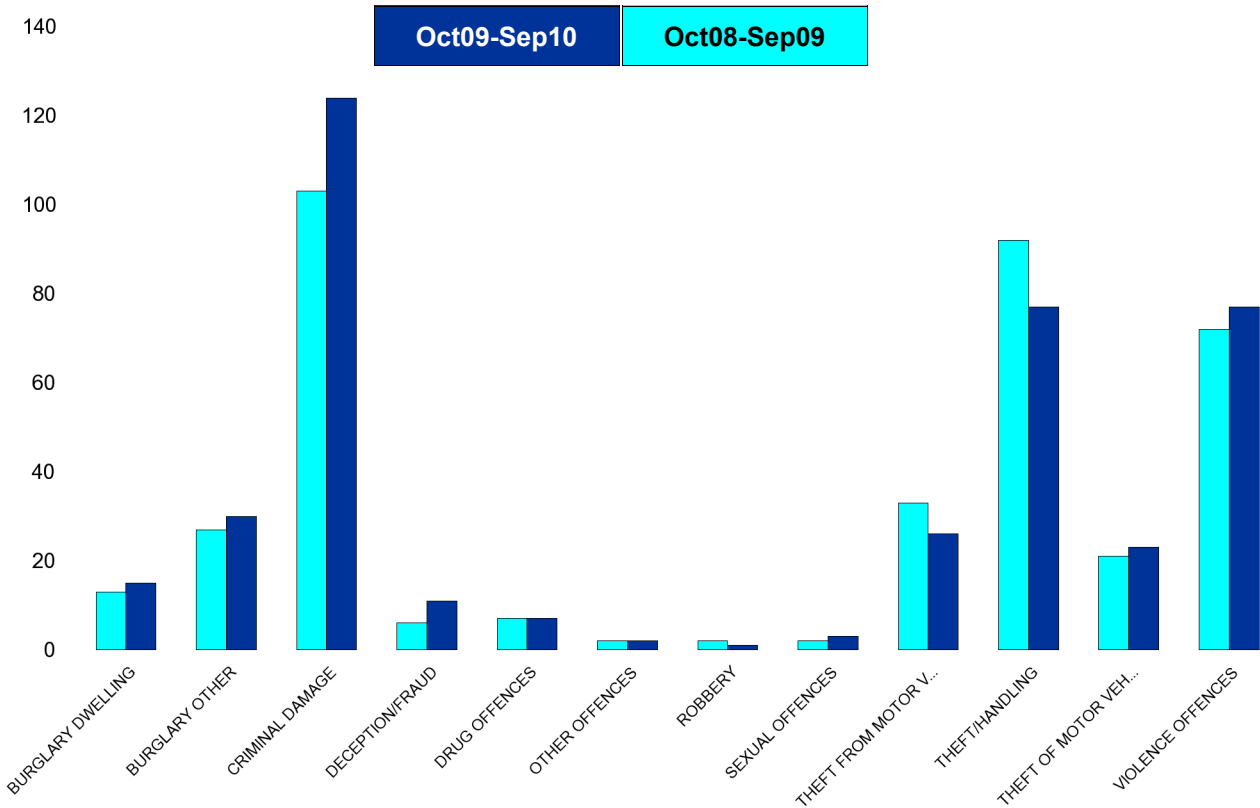


## A6 Towns Forum Report

### NK10 & NK11 Desborough - Crime

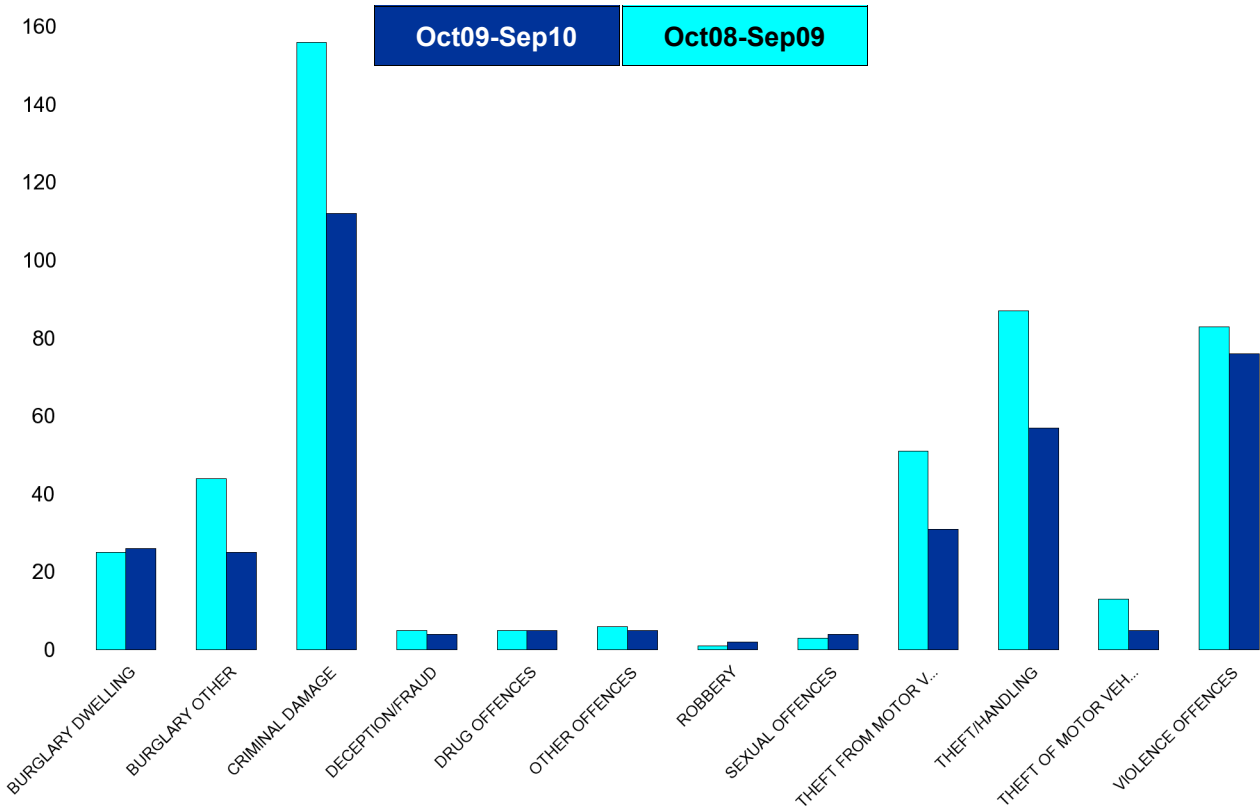
HO Group	No of Crimes (Oct09-Sep10)	No of Crimes (Oct08-Sep09)	+/- Crime	% Change	No of Cleared Up Crimes	Detection Rate (Past 12 Months)
BURGLARY DWELLING	15	13	2	15%	2	13%
BURGLARY OTHER	30	27	3	11%	2	7%
CRIMINAL DAMAGE	124	103	21	20%	7	6%
DECEPTION/FRAUD	11	6	5	83%	6	55%
DRUG OFFENCES	7	7	0	0%	6	86%
OTHER OFFENCES	2	2	0	0%	2	100%
ROBBERY	1	2	-1	-50%	0	0%
SEXUAL OFFENCES	3	2	1	50%	0	0%
THEFT FROM MOTOR VEHICLES	26	33	-7	-21%	0	0%
THEFT/HANDLING	77	92	-15	-16%	19	25%
THEFT OF MOTOR VEHICLES	23	21	2	10%	0	0%
VIOLENCE OFFENCES	77	72	5	7%	25	32%
<b>Sum:</b>	<b>396</b>	<b>380</b>	<b>16</b>	<b>4%</b>	<b>69</b>	<b>17%</b>



## A6 Towns Forum Report

### NK12 Rothwell - Crime

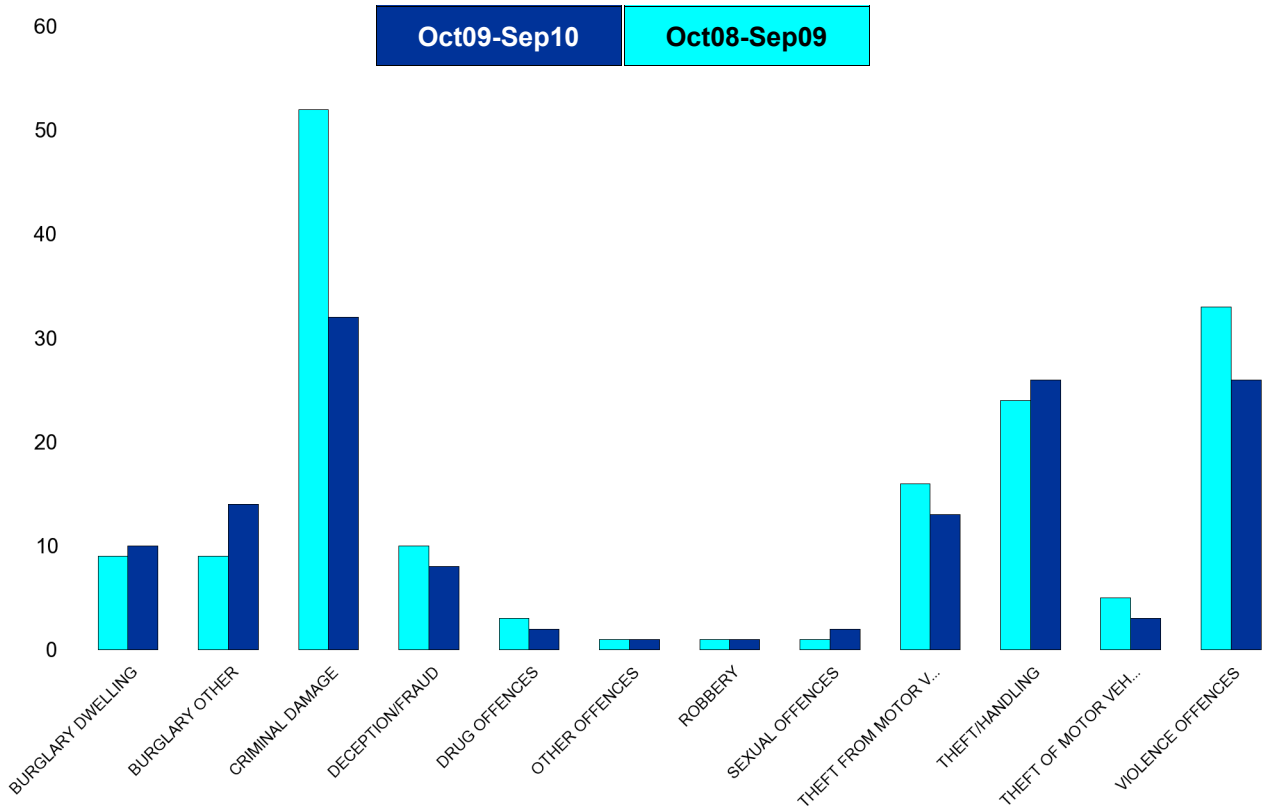
HO Group	No of Crimes (Oct09-Sep10)	No of Crimes (Oct08-Sep09)	+/- Crime	% Change	No of Cleared Up Crimes	Detection Rate (Past 12 Months)
BURGLARY DWELLING	26	25	1	4%	3	12%
BURGLARY OTHER	25	44	-19	-43%	1	4%
CRIMINAL DAMAGE	112	156	-44	-28%	22	20%
DECEPTION/FRAUD	4	5	-1	-20%	1	25%
DRUG OFFENCES	5	5	0	0%	5	100%
OTHER OFFENCES	5	6	-1	-17%	6	120%
ROBBERY	2	1	1	100%	0	0%
SEXUAL OFFENCES	4	3	1	33%	0	0%
THEFT FROM MOTOR VEHICLES	31	51	-20	-39%	0	0%
THEFT/HANDLING	57	87	-30	-34%	10	18%
THEFT OF MOTOR VEHICLES	5	13	-8	-62%	4	80%
VIOLENCE OFFENCES	76	83	-7	-8%	38	50%
<b>Sum:</b>	<b>352</b>	<b>479</b>	<b>-127</b>	<b>-27%</b>	<b>90</b>	<b>26%</b>



## A6 Towns Forum Report

### NK15 Barton - Crime

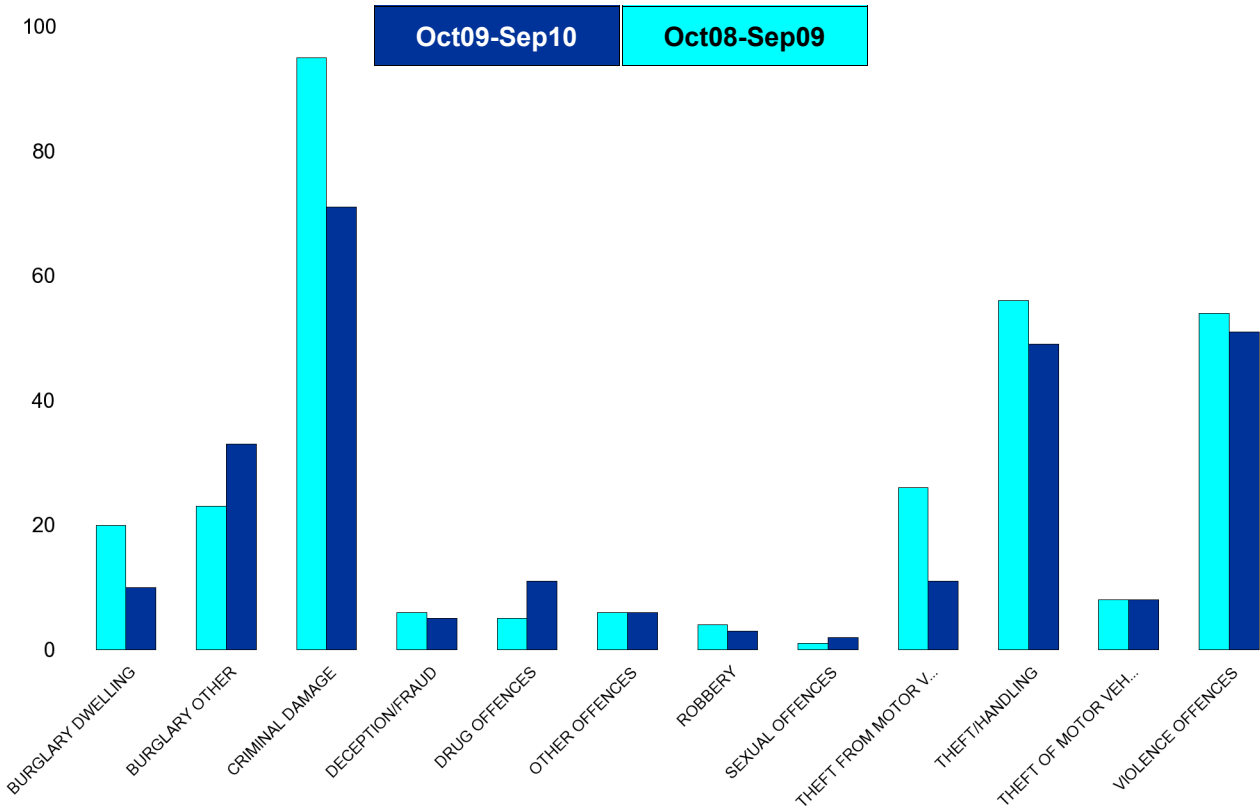
HO Group	No of Crimes (Oct09-Sep10)	No of Crimes (Oct08-Sep09)	+/- Crime	% Change	No of Cleared Up Crimes	Detection Rate (Past 12 Months)
BURGLARY DWELLING	10	9	1	11%	0	0%
BURGLARY OTHER	14	9	5	56%	1	7%
CRIMINAL DAMAGE	32	52	-20	-38%	0	0%
DECEPTION/FRAUD	8	10	-2	-20%	3	38%
DRUG OFFENCES	2	3	-1	-33%	2	100%
OTHER OFFENCES	1	1	0	0%	1	100%
ROBBERY	1	1	0	0%	0	0%
SEXUAL OFFENCES	2	1	1	100%	1	50%
THEFT FROM MOTOR VEHICLES	13	16	-3	-19%	0	0%
THEFT/HANDLING	26	24	2	8%	3	12%
THEFT OF MOTOR VEHICLES	3	5	-2	-40%	1	33%
VIOLENCE OFFENCES	26	33	-7	-21%	10	38%
<b>Sum:</b>	<b>138</b>	<b>164</b>	<b>-26</b>	<b>-16%</b>	<b>22</b>	<b>16%</b>



## A6 Towns Forum Report

### NK16 Latimer - Crime

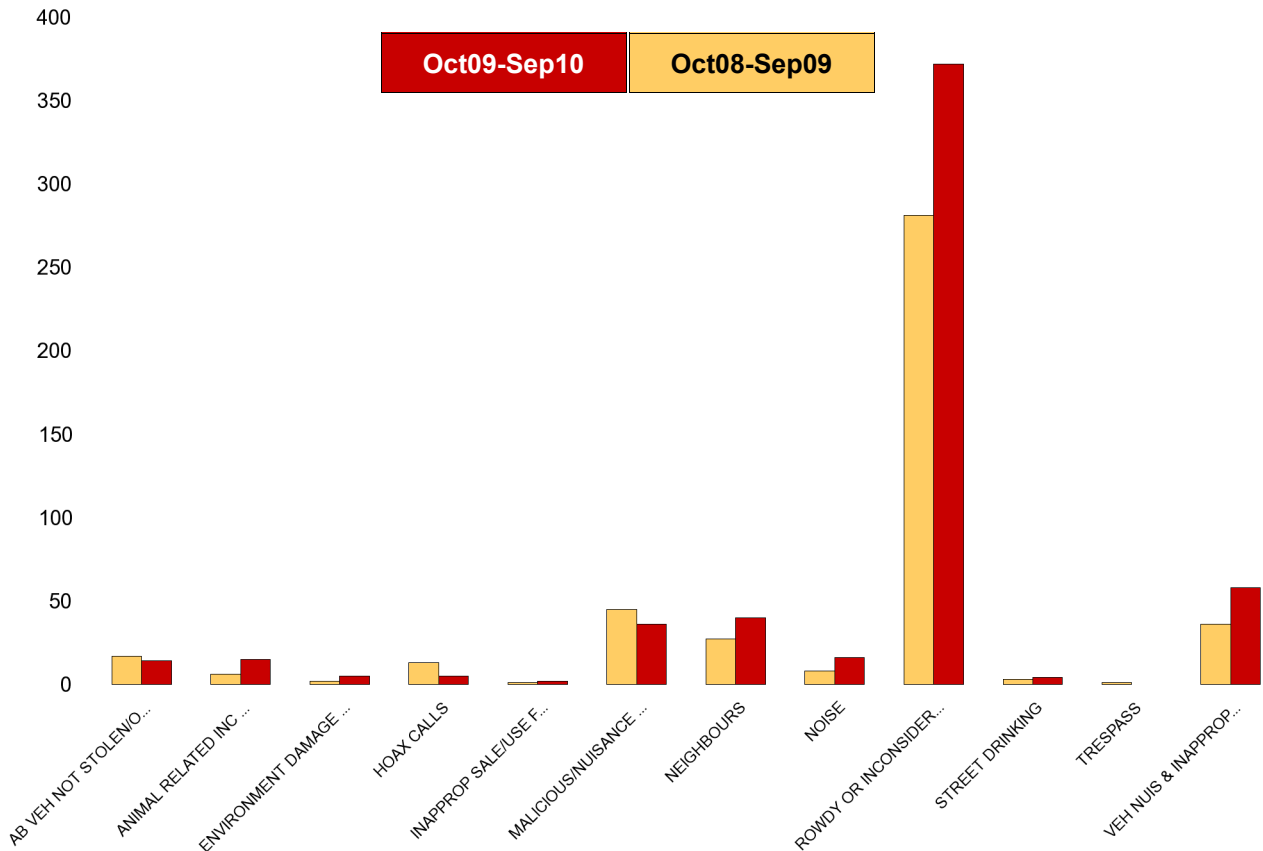
HO Group	No of Crimes (Oct09-Sep10)	No of Crimes (Oct08-Sep09)	+/- Crime	% Change	No of Cleared Up Crimes	Detection Rate (Past 12 Months)
BURGLARY DWELLING	10	20	-10	-50%	1	10%
BURGLARY OTHER	33	23	10	43%	0	0%
CRIMINAL DAMAGE	71	95	-24	-25%	10	14%
DECEPTION/FRAUD	5	6	-1	-17%	1	20%
DRUG OFFENCES	11	5	6	120%	11	100%
OTHER OFFENCES	6	6	0	0%	3	50%
ROBBERY	3	4	-1	-25%	1	33%
SEXUAL OFFENCES	2	1	1	100%	0	0%
THEFT FROM MOTOR VEHICLES	11	26	-15	-58%	0	0%
THEFT/HANDLING	49	56	-7	-13%	13	27%
THEFT OF MOTOR VEHICLES	8	8	0	0%	2	25%
VIOLENCE OFFENCES	51	54	-3	-6%	12	24%
<b>Sum:</b>	<b>260</b>	<b>304</b>	<b>-44</b>	<b>-14%</b>	<b>54</b>	<b>21%</b>



# A6 Towns Forum Report

## NK10 & NK11 Desborough ASB

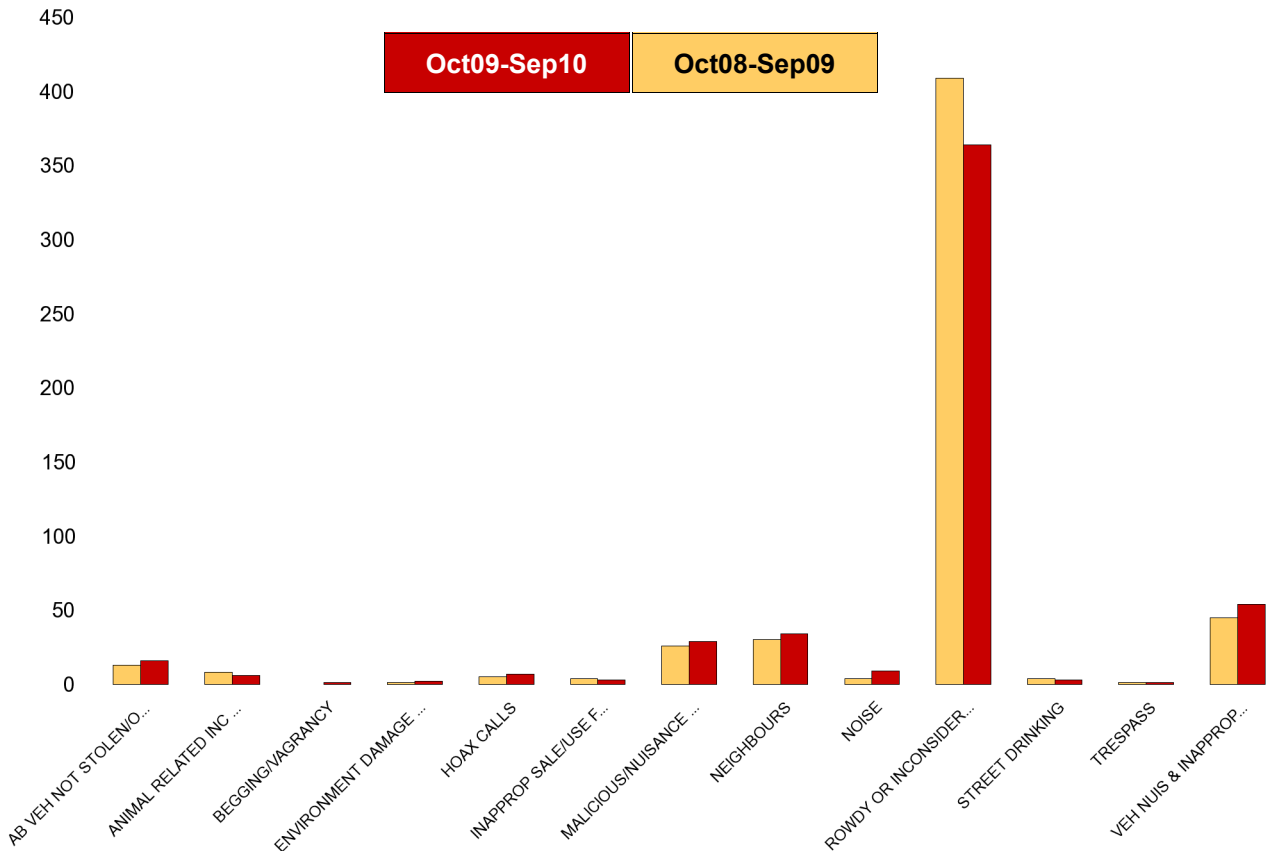
NSIR Closing Category Desc	No of Incidents (Oct09-Sep10)	No of Incidents (Oct08-Sep09)	+/- Incidents	% Change Incidents
AB VEH NOT STOLEN/OBSTRUCT	14	17	-3	-18%
ANIMAL RELATED INC ANTI-SOCIAL	15	6	9	150%
ENVIRONMENT DAMAGE OR LITTER	5	2	3	150%
HOAX CALLS	5	13	-8	-62%
INAPPROP SALE/USE FIREWORKS	2	1	1	100%
MALICIOUS/NUISANCE COMMS	36	45	-9	-20%
NEIGHBOURS	40	27	13	48%
NOISE	16	8	8	100%
ROWDY OR INCONSIDERATE BEHAV	372	281	91	32%
STREET DRINKING	4	3	1	33%
TRESPASS	0	1	-1	-100%
VEH NUIS & INAPPROP VEH USE	58	36	22	61%
<b>Sum:</b>	<b>567</b>	<b>440</b>	<b>127</b>	<b>29%</b>



# A6 Towns Forum Report

## NK12 Rothwell - ASB

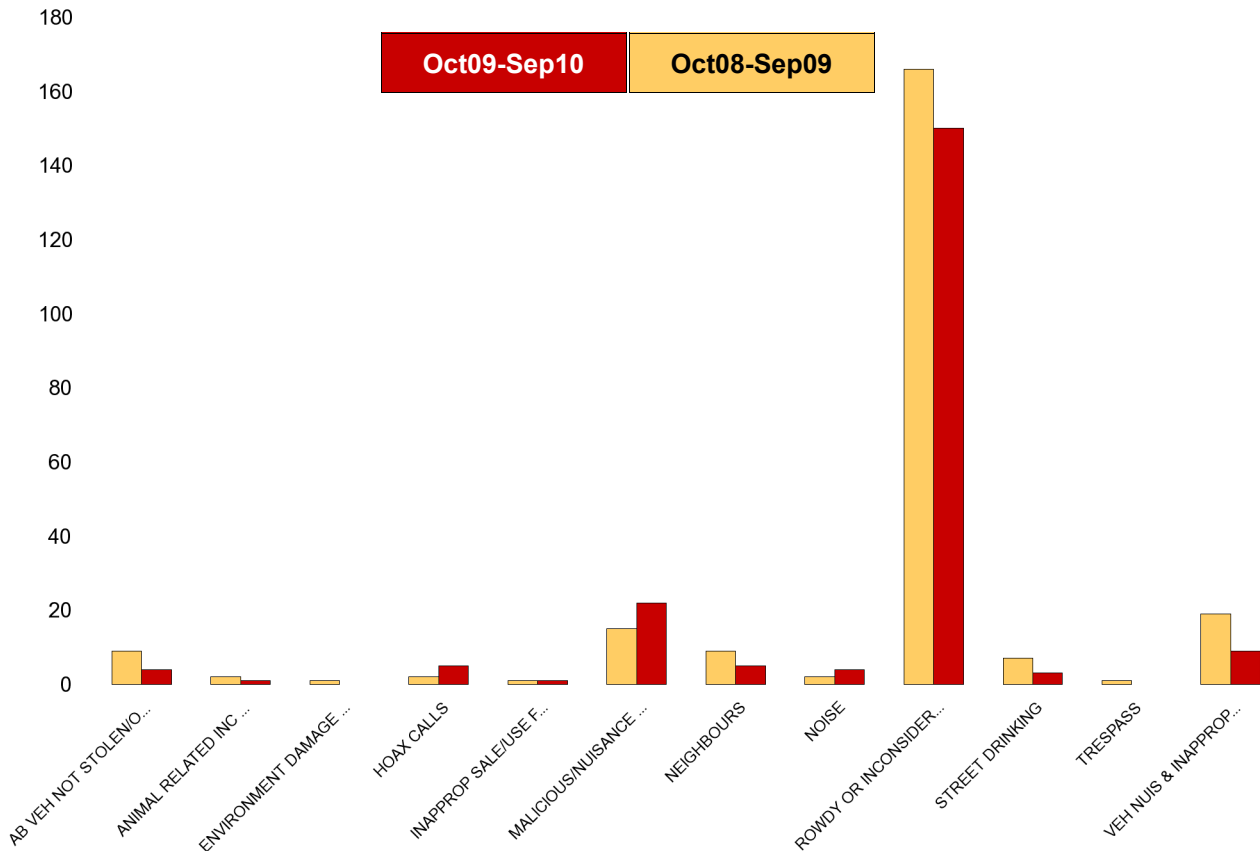
NSIR Closing Category Desc	No of Incidents (Oct09-Sep10)	No of Incidents (Oct08-Sep09)	+/- Incidents	% Change Incidents
AB VEH NOT STOLEN/OBSTRUCT	16	13	3	23%
ANIMAL RELATED INC ANTI-SOCIAL	6	8	-2	-25%
BEGGING/VAGRANCY	1	0	1	0%
ENVIRONMENT DAMAGE OR LITTER	2	1	1	100%
HOAX CALLS	7	5	2	40%
INAPPROP SALE/USE FIREWORKS	3	4	-1	-25%
MALICIOUS/NUISANCE COMMS	29	26	3	12%
NEIGHBOURS	34	30	4	13%
NOISE	9	4	5	125%
ROWDY OR INCONSIDERATE BEHAV	364	409	-45	-11%
STREET DRINKING	3	4	-1	-25%
TRESPASS	1	1	0	0%
VEH NUIS & INAPPROP VEH USE	54	45	9	20%
<b>Sum:</b>	<b>529</b>	<b>550</b>	<b>-21</b>	<b>-4%</b>



# A6 Towns Forum Report

## NK15 Barton - ASB

NSIR Closing Category Desc	No of Incidents (Oct09-Sep10)	No of Incidents (Oct08-Sep09)	+/- Incidents	% Change Incidents
AB VEH NOT STOLEN/OBSTRUCT	4	9	-5	-56%
ANIMAL RELATED INC ANTI-SOCIAL	1	2	-1	-50%
ENVIRONMENT DAMAGE OR LITTER	0	1	-1	-100%
HOAX CALLS	5	2	3	150%
INAPPROP SALE/USE FIREWORKS	1	1	0	0%
MALICIOUS/NUISANCE COMMS	22	15	7	47%
NEIGHBOURS	5	9	-4	-44%
NOISE	4	2	2	100%
ROWDY OR INCONSIDERATE BEHAV	150	166	-16	-10%
STREET DRINKING	3	7	-4	-57%
TRESPASS	0	1	-1	-100%
VEH NUIS & INAPPROP VEH USE	9	19	-10	-53%
<b>Sum:</b>	<b>204</b>	<b>234</b>	<b>-30</b>	<b>-13%</b>



## A6 Towns Forum Report

### NK16 Latimer - ASB

NSIR Closing Category Desc	No of Incidents (Oct09-Sep10)	No of Incidents (Oct08-Sep09)	+/- Incidents	% Change Incidents
AB VEH NOT STOLEN/OBSTRUCT	14	10	4	40%
ANIMAL RELATED INC ANTI-SOCIAL	4	2	2	100%
HOAX CALLS	3	5	-2	-40%
INAPPROP SALE/USE FIREWORKS	0	1	-1	-100%
MALICIOUS/NUISANCE COMMS	42	40	2	5%
NEIGHBOURS	29	18	11	61%
NOISE	5	5	0	0%
ROWDY OR INCONSIDERATE BEHAV	221	238	-17	-7%
STREET DRINKING	2	5	-3	-60%
TRESPASS	0	1	-1	-100%
VEH NUIS & INAPPROP VEH USE	44	27	17	63%
<b>Sum:</b>	<b>364</b>	<b>352</b>	<b>12</b>	<b>3%</b>

