

Delivering Our Town Centres

Regeneration and Suite 16



Kettering
Borough Council

Market Place Events

Kettering by the Sea

Kettering by the Sea

Wicki Bear puts in an appearance



Kettering
Borough Council

Kettering by the Sea

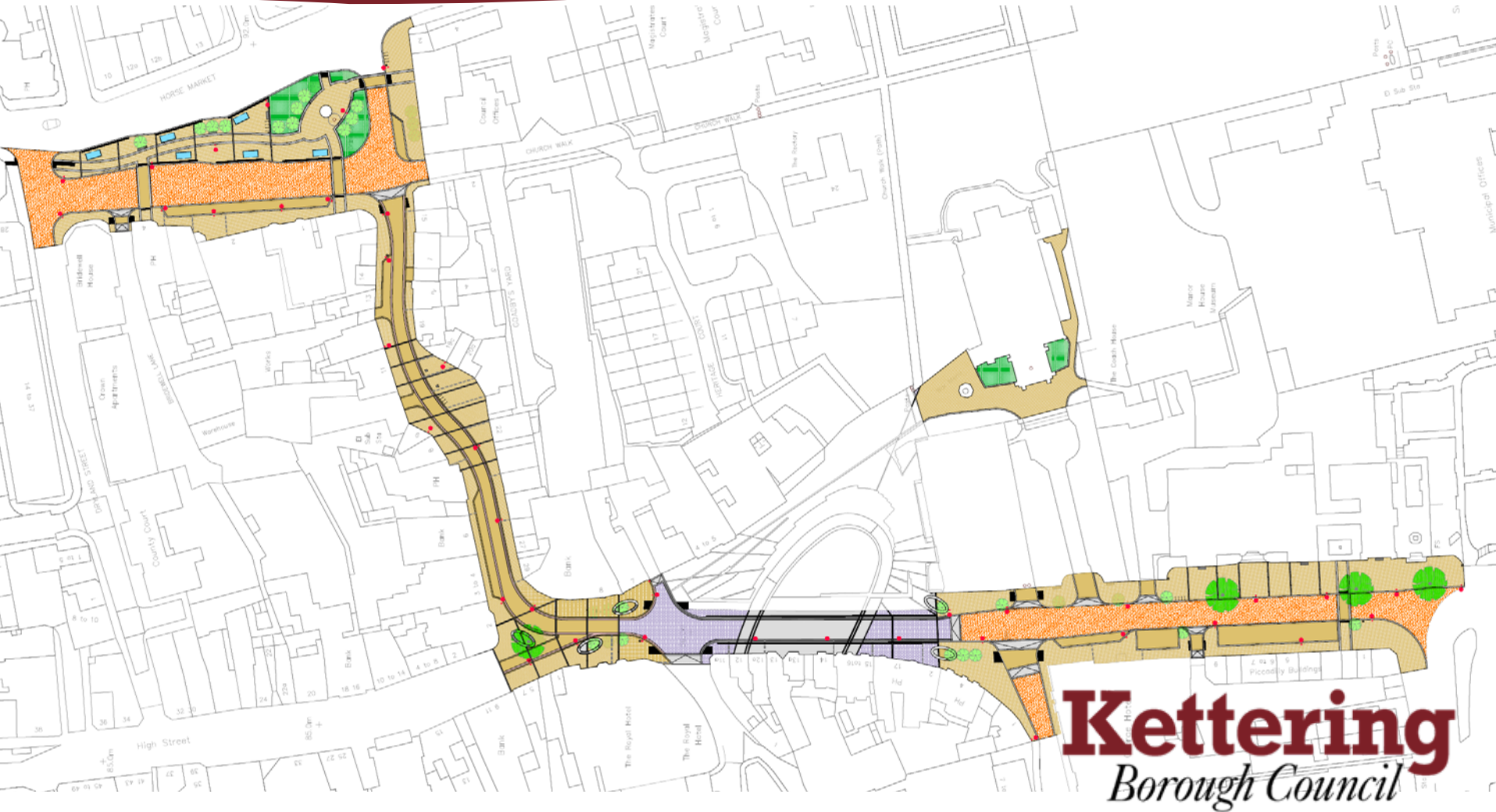
Kids enjoy a show



Kettering
Borough Council

Public Realm Phases 2 and 3

The Final Design



Public Realm Phases 2 and 3

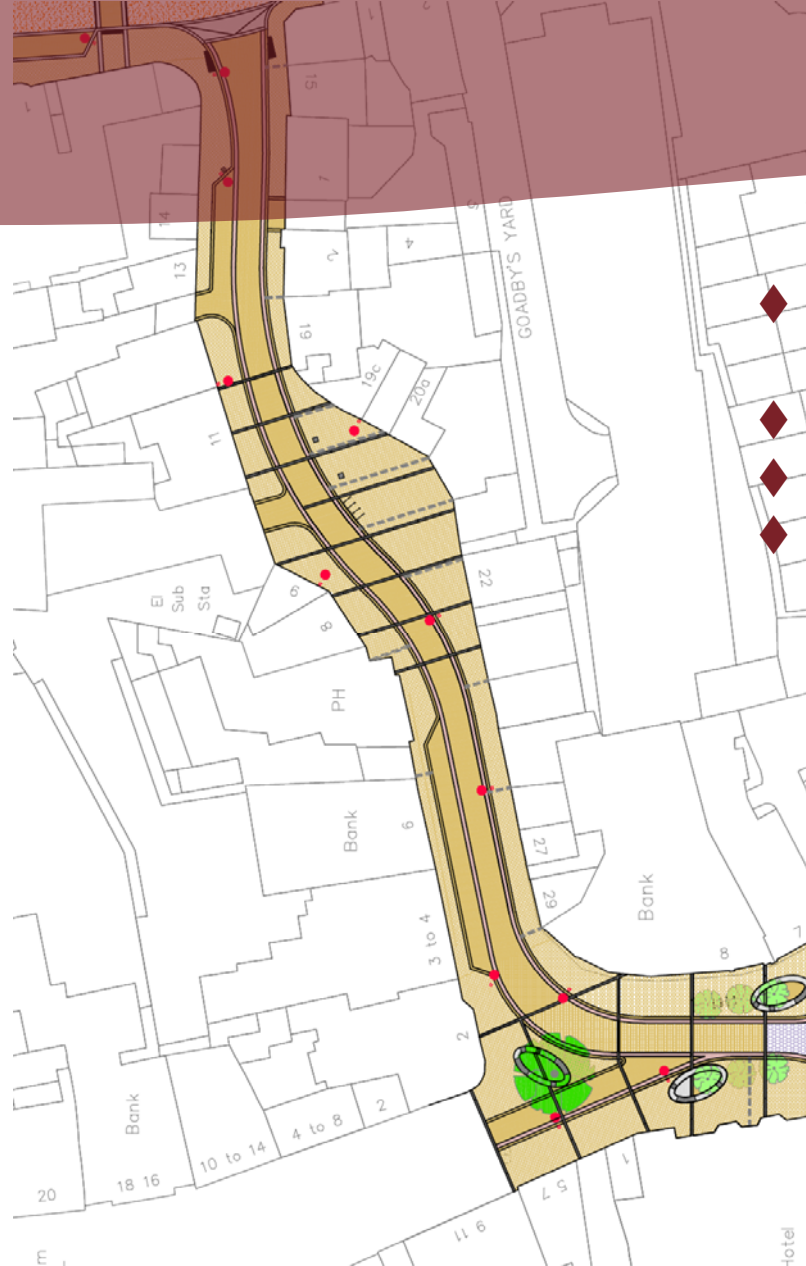
Horsemarket

- ◆ 6 Bus Bays
- ◆ 8 Car Parking Spaces
- ◆ 2 Large Loading Bays
- ◆ High Quality Paving
- ◆ New Tree Planting



Public Realm Phases 2 and 3

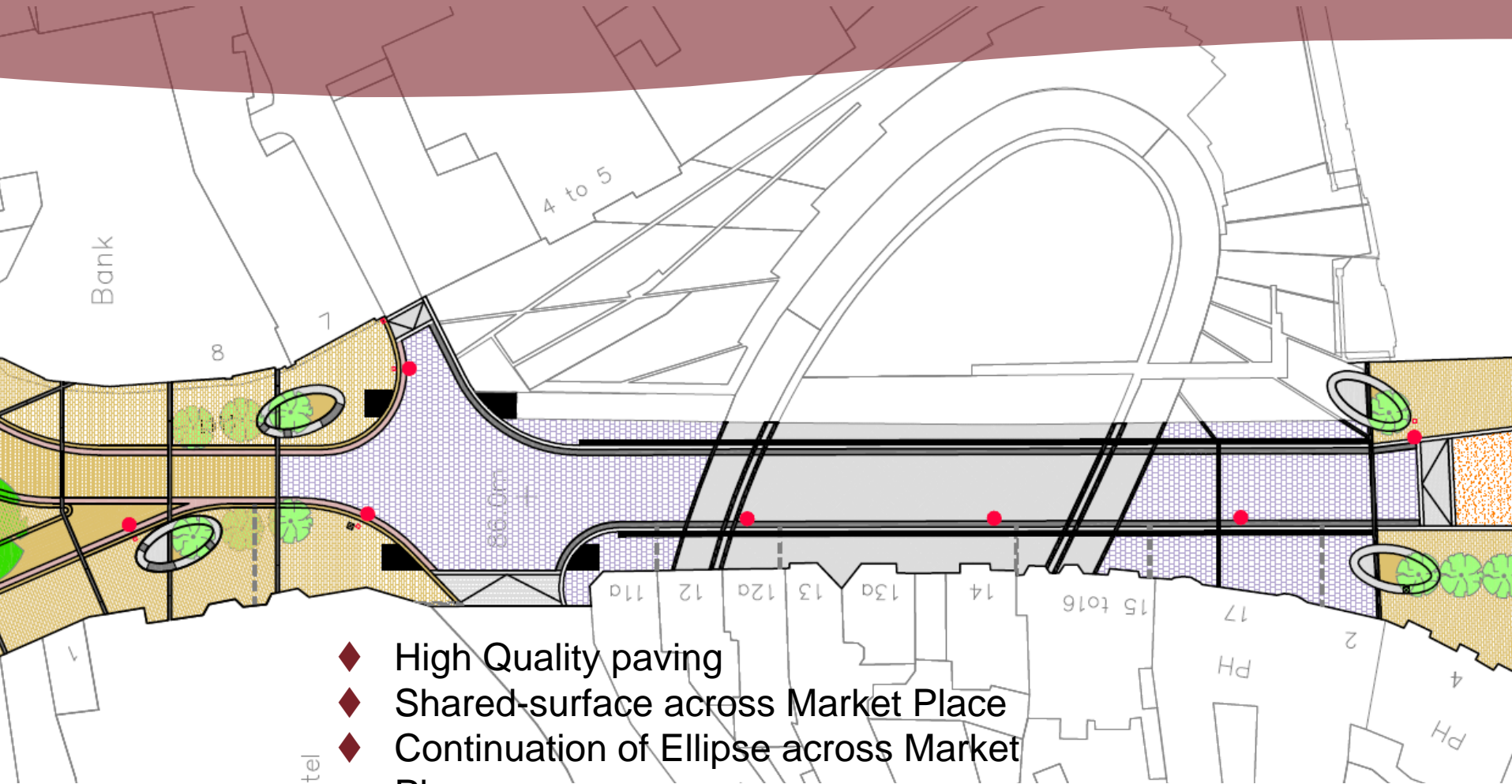
Market Street



- ◆ High Quality paving across the street
- ◆ Bollard-controlled access
- ◆ 2 Large Loading Bays
- ◆ Time-restricted blue-badged access

Public Realm Phases 2 and 3

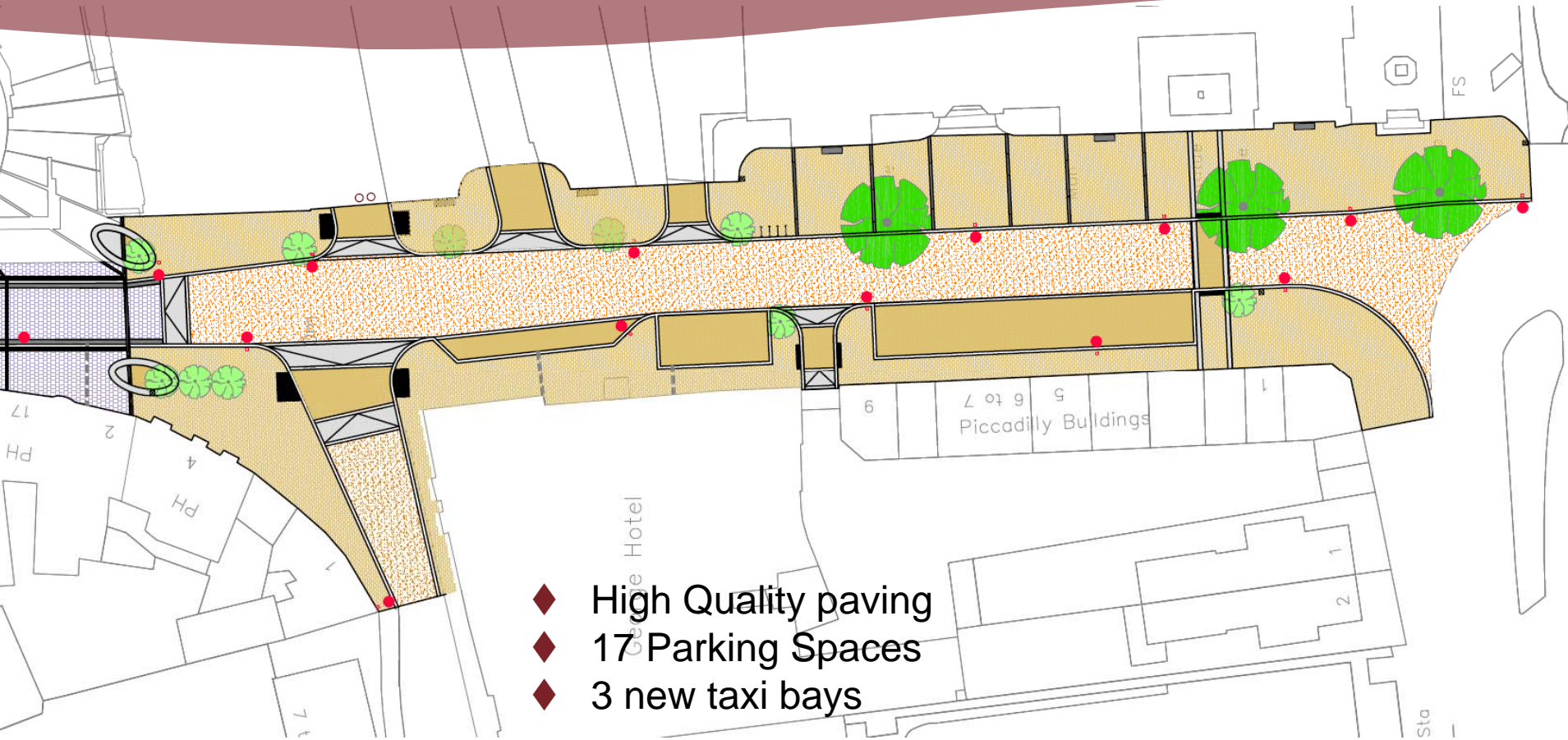
Market Place



- ◆ High Quality paving
- ◆ Shared-surface across Market Place
- ◆ Continuation of Ellipse across Market Place

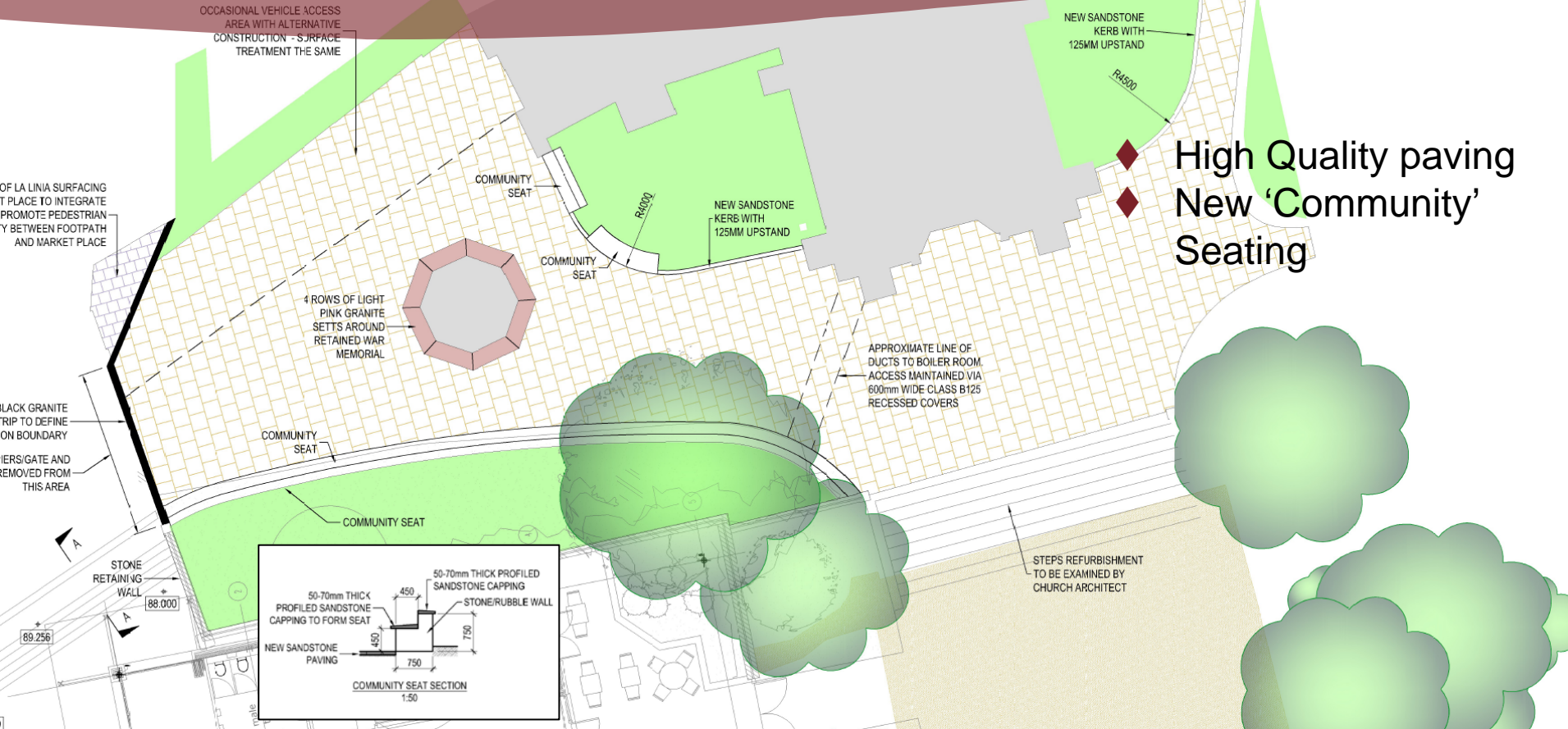
Public Realm Phases 2 and 3

Sheep Street



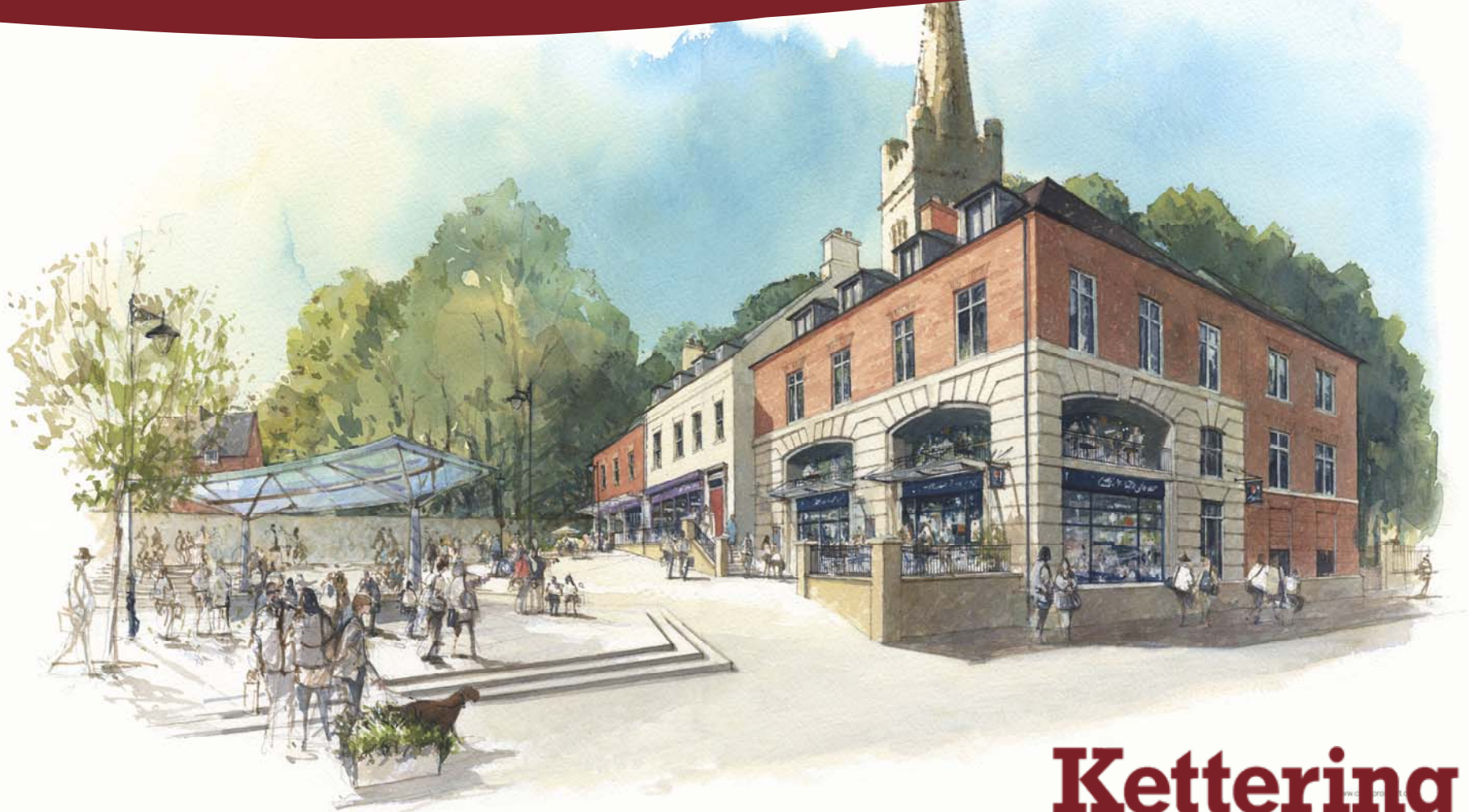
Public Realm Phases 2 and 3

The Parish Church Forecourt



Market Place Buildings

Update



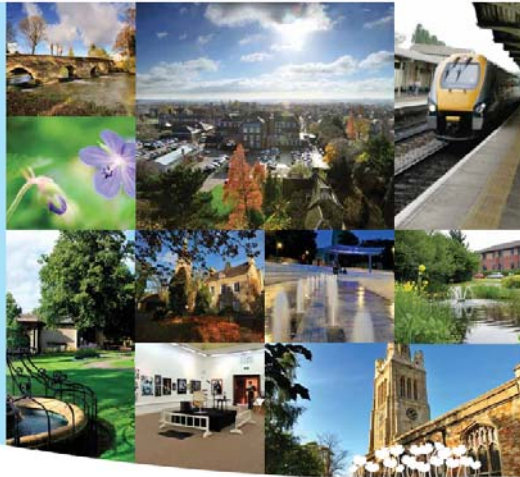
Kettering
Borough Council

Central for Business

The Kettering Prospectus

Central for Business

www.investinkettering.co.uk



Kettering
NORTHAMPTONSHIRE

Central for your future

For a discussion about the benefits and opportunities of investing in Kettering, contact:

Gregg Chopper
Economic & Regeneration Manager (Suite 16)
Tel: 01536 410333
M: 07999 604852
www.kettering.gov.uk

Produced by:

Kettering
Borough Council

Supported by:

NorthNorthants
Development Company

Northamptonshire
County Council

Waste & Resources
RECYCLING
RESIDUALITY

01 June 2010

Kettering
Borough Council

Central for Business

Promoting our assets



Excellent
expanding education
facilities

"Two new academies have been launched in Kettering Town and the Tresham Institute recently moved into their purpose built state of the art multi-million pound college campus on the outskirts of the town centre."



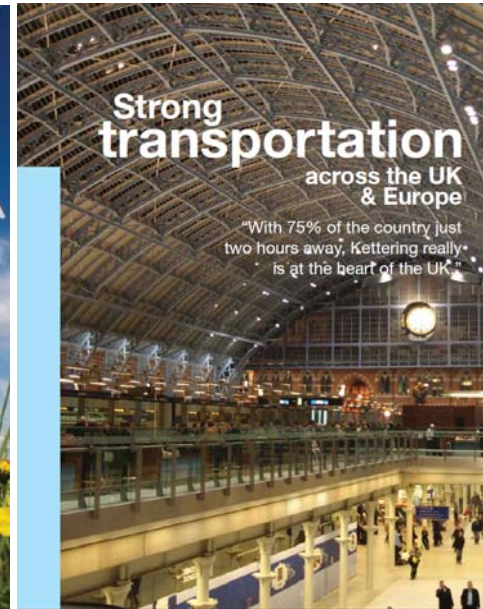
Rich in heritage,
distinctive
& fun

"Solid commitment to sustainable development will see Kettering retain its distinctive character and beauty while delivering ambitious growth."



Leading the
environmental
response

"A testament to our strong environmental policy, Kettering was chosen to host the UK's contribution to the Copenhagen Climate Change Summit."



Strong
transportation
across the UK
& Europe

"With 75% of the country just two hours away, Kettering really is at the heart of the UK."

Kettering
Borough Council

Central for Business

Identifying development opportunities

21

The restaurant quarter



Key Facts

- Part of a multi-million pound redevelopment
- High quality environment for a cluster of restaurants to operate in
- Two purpose built restaurants fronting an amphitheatre and improved street scene set to be completed by early 2011
- Opportunities for first mover advantage for operators

23

The shopping quarter



Key Facts

- Retail centre of growth area presenting significant opportunities for retail expansion and return on investment
- East Midlands regional retail catchment ranking of 6th
- Retail catchment for wealthy successful, secure families and flourishing families above the UK average
- Primary catchment market share of 80% well above the UK average of 52%
- Aggressively seeking department store chains

25

The station quarter



Key Facts

- Midland mainline within 1 hour of London's St. Pancras Station
- 250,000 sq ft of prime office space available
- Allocation for a hotel
- In the centre of the Oxford and Cambridge ARC
- 2 multi-storey car parks
- Short walk to the redeveloped town centre
- Eco-friendly bus connections and transport modes

27

The Yards quarter



Key Facts

- Independent retail offering to enrich Kettering shopping experience
- Premium retail
- Arts and leisure
- Access to the consumer base with higher disposable incomes within the Kettering catchment
- Area of town centre known as Scots Yard

Central for Business

Demonstrating our track record of delivery

Kettering Business Park



Chesham House



The Market Place



Tresham College



Delivering Our Town Centres

Summary

- ◆ Phase 2/3 of the Public Realm is going through the final technical approval stages before work can start in October 2010
- ◆ The Market Place Buildings project is on-track for completion in Spring 2011.
- ◆ The Kettering prospectus: “Central for Business, Central to your Future” is now being used as a key investment tool for Kettering