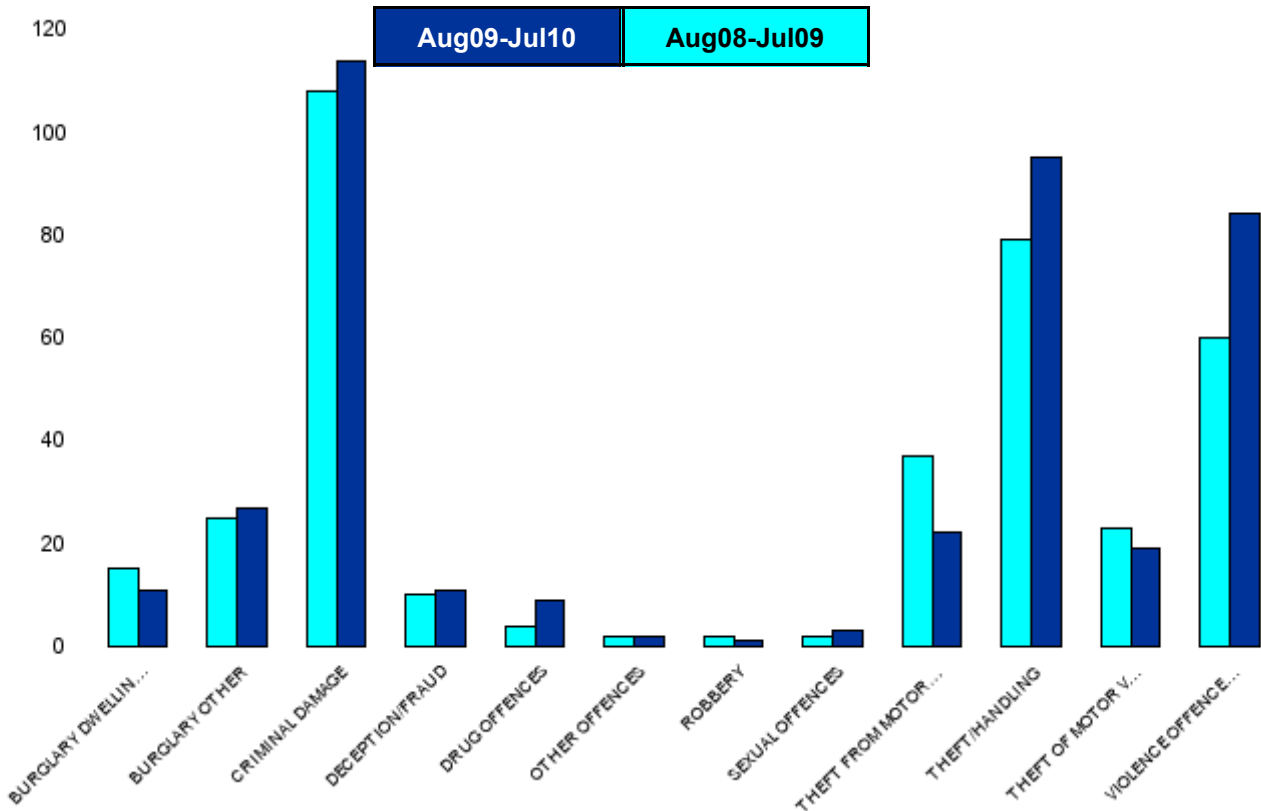


A6 Towns Forum Report

NK10 & NK11 Desborough - Crime

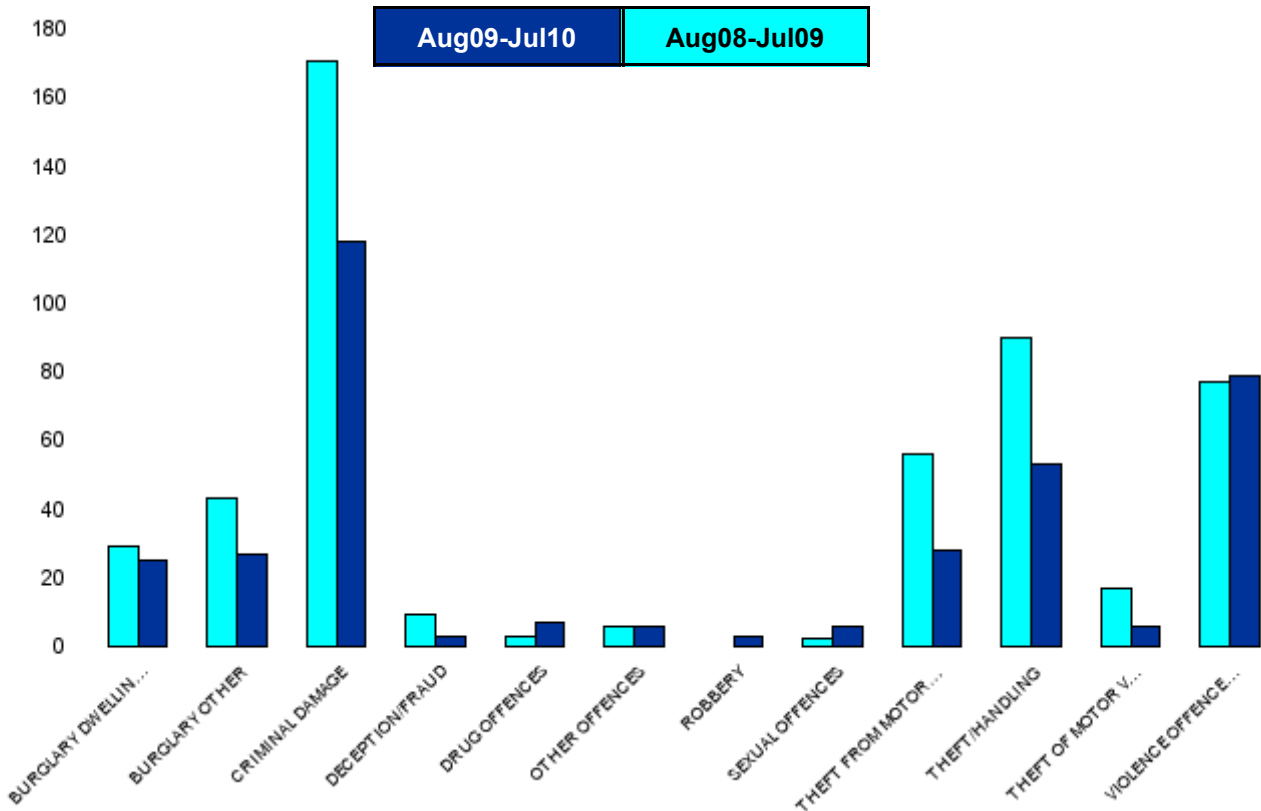
HO Group	No of Crimes (Aug09-Jul10)	No of Crimes (Aug08-Jul09)	+/- Crime	% Change	No of Cleared Up Crimes	Detection Rate (Past 12 Months)
BURGLARY DWELLING	11	15	-4	-27%	2	18%
BURGLARY OTHER	27	25	2	8%	4	15%
CRIMINAL DAMAGE	114	108	6	6%	6	5%
DECEPTION/FRAUD	11	10	1	10%	5	45%
DRUG OFFENCES	9	4	5	125%	8	89%
OTHER OFFENCES	2	2	0	0%	2	100%
ROBBERY	1	2	-1	-50%	0	0%
SEXUAL OFFENCES	3	2	1	50%	0	0%
THEFT FROM MOTOR VEHICLES	22	37	-15	-41%	0	0%
THEFT/HANDLING	95	79	16	20%	23	24%
THEFT OF MOTOR VEHICLES	19	23	-4	-17%	0	0%
VIOLENCE OFFENCES	84	60	24	40%	27	32%
Sum:	398	367	31	8%	77	19%



A6 Towns Forum Report

NK12 Rothwell - Crime

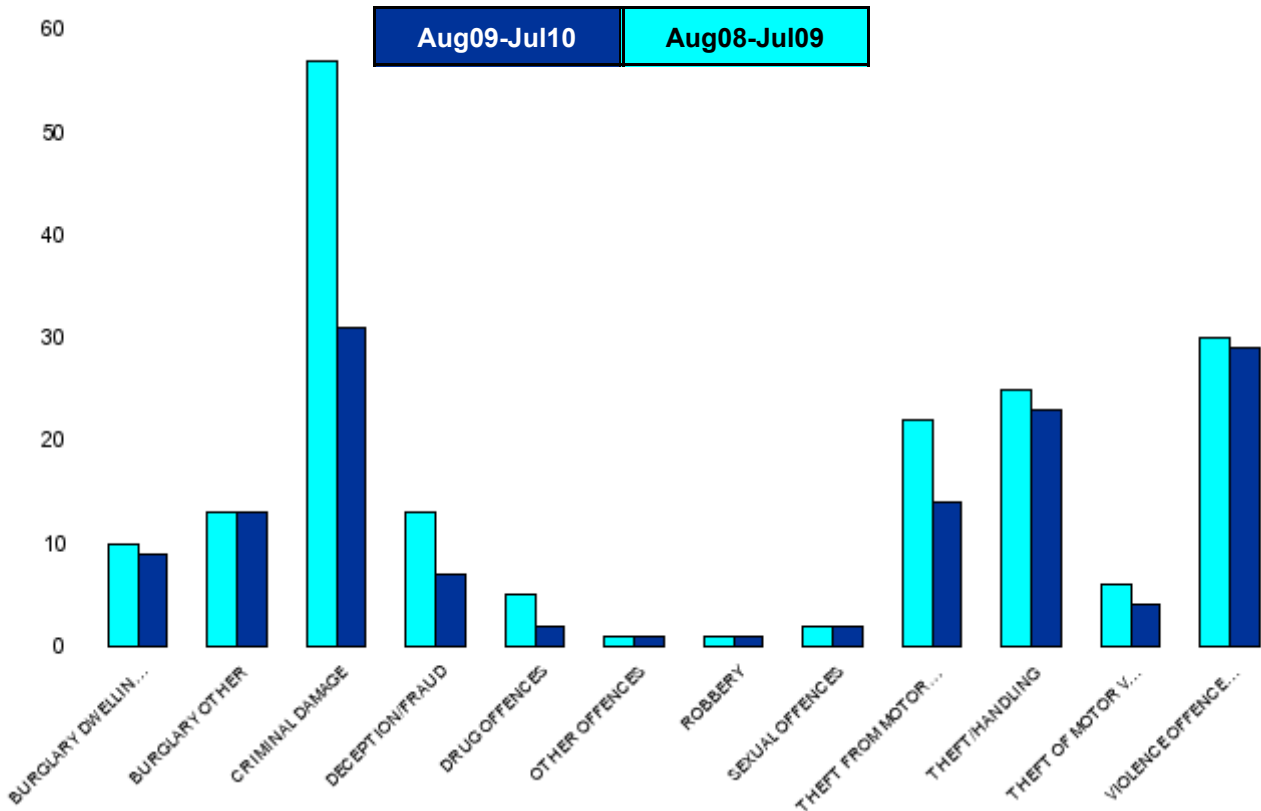
HO Group	No of Crimes (Aug09-Jul10)	No of Crimes (Aug08-Jul09)	+/- Crime	% Change	No of Cleared Up Crimes	Detection Rate (Past 12 Months)
BURGLARY DWELLING	25	29	-4	-14%	3	12%
BURGLARY OTHER	27	43	-16	-37%	3	11%
CRIMINAL DAMAGE	118	171	-53	-31%	24	20%
DECEPTION/FRAUD	3	9	-6	-67%	1	33%
DRUG OFFENCES	7	3	4	133%	6	86%
OTHER OFFENCES	6	6	0	0%	6	100%
ROBBERY	3	0	3	0%	0	0%
SEXUAL OFFENCES	6	2	4	200%	1	17%
THEFT FROM MOTOR VEHICLES	28	56	-28	-50%	0	0%
THEFT/HANDLING	53	90	-37	-41%	13	25%
THEFT OF MOTOR VEHICLES	6	17	-11	-65%	2	33%
VIOLENCE OFFENCES	79	77	2	3%	40	51%
Sum:	361	503	-142	-28%	99	27%



A6 Towns Forum Report

NK15 Barton - Crime

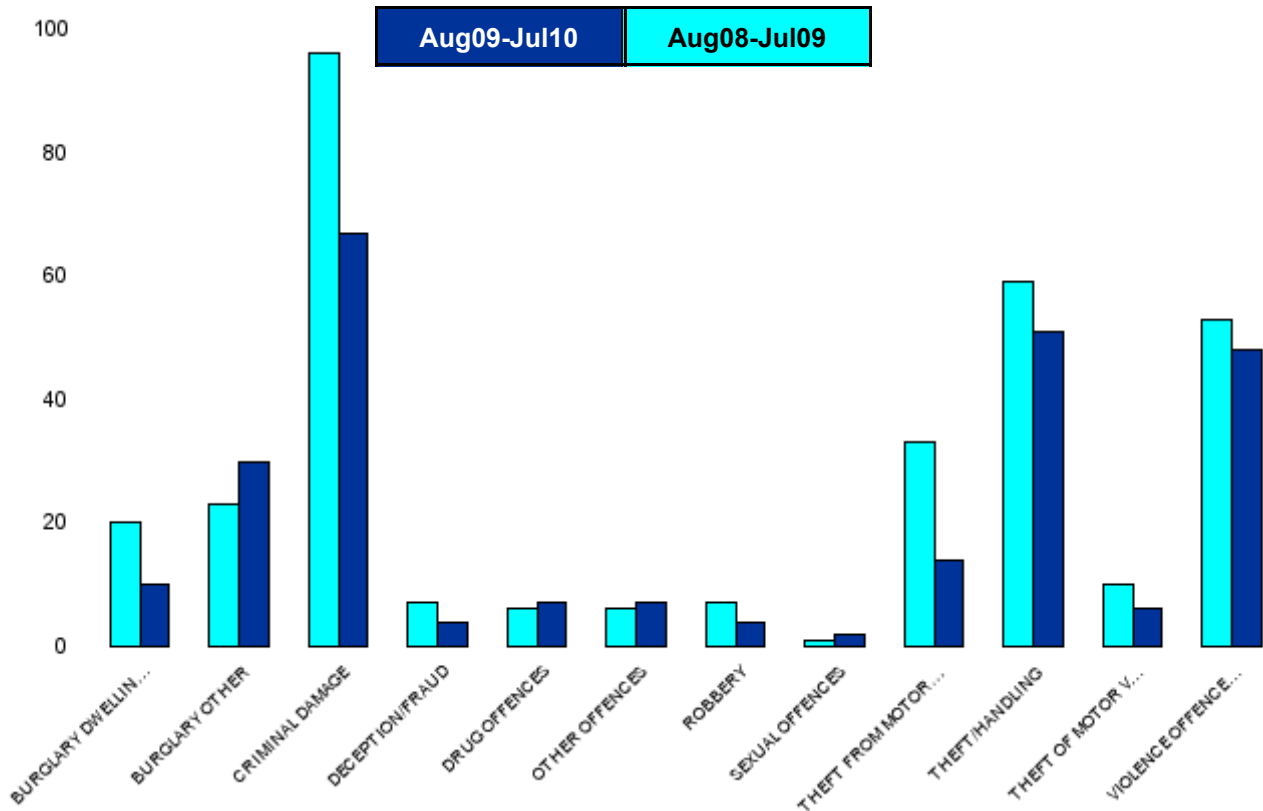
HO Group	No of Crimes (Aug09-Jul10)	No of Crimes (Aug08-Jul09)	+/- Crime	% Change	No of Cleared Up Crimes	Detection Rate (Past 12 Months)
BURGLARY DWELLING	9	10	-1	-10%	0	0%
BURGLARY OTHER	13	13	0	0%	1	8%
CRIMINAL DAMAGE	31	57	-26	-46%	1	3%
DECEPTION/FRAUD	7	13	-6	-46%	2	29%
DRUG OFFENCES	2	5	-3	-60%	2	100%
OTHER OFFENCES	1	1	0	0%	1	100%
ROBBERY	1	1	0	0%	0	0%
SEXUAL OFFENCES	2	2	0	0%	2	100%
THEFT FROM MOTOR VEHICLES	14	22	-8	-36%	0	0%
THEFT/HANDLING	23	25	-2	-8%	2	9%
THEFT OF MOTOR VEHICLES	4	6	-2	-33%	1	25%
VIOLENCE OFFENCES	29	30	-1	-3%	11	38%
Sum:	136	185	-49	-26%	23	17%



A6 Towns Forum Report

NK16 Latimer - Crime

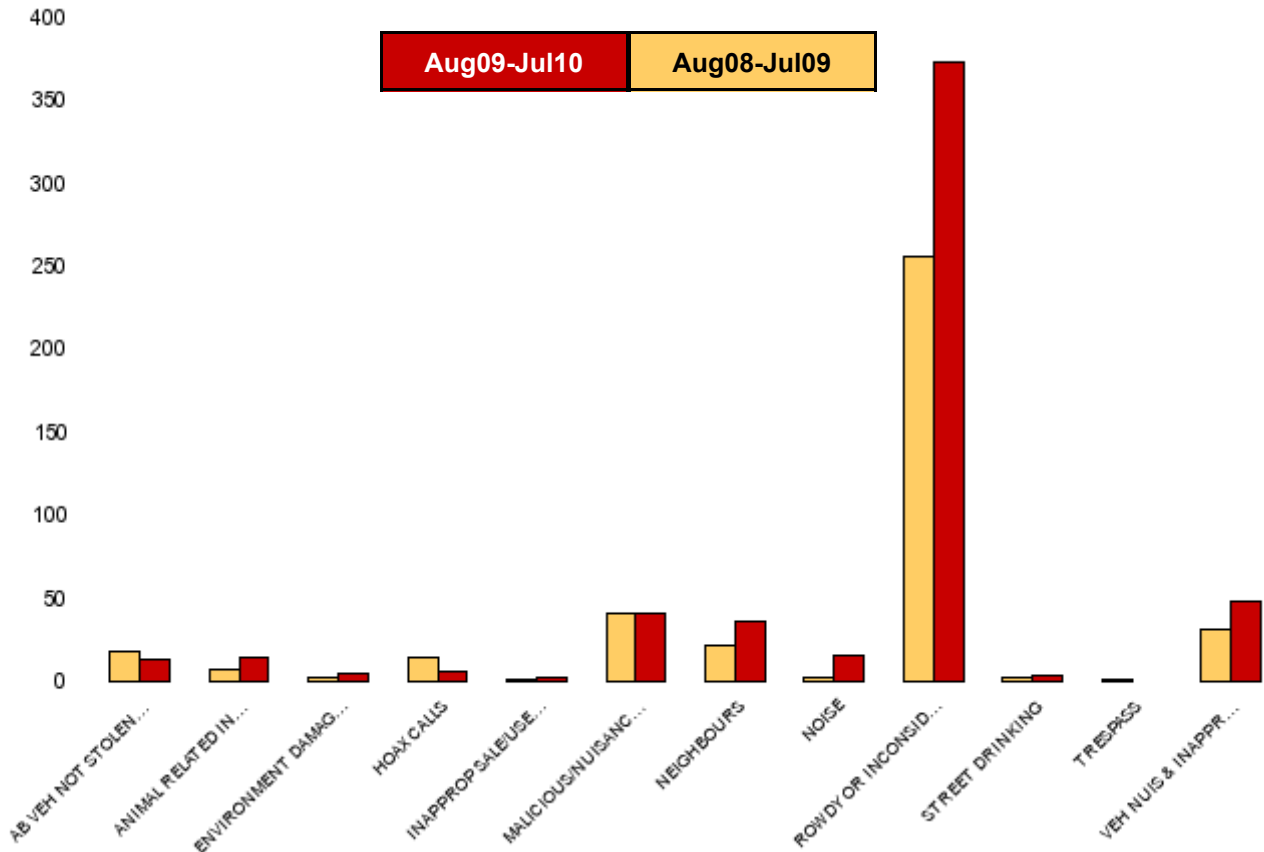
HO Group	No of Crimes (Aug09-Jul10)	No of Crimes (Aug08-Jul09)	+/- Crime	% Change	No of Cleared Up Crimes	Detection Rate (Past 12 Months)
BURGLARY DWELLING	10	20	-10	-50%	2	20%
BURGLARY OTHER	30	23	7	30%	2	7%
CRIMINAL DAMAGE	67	96	-29	-30%	5	7%
DECEPTION/FRAUD	4	7	-3	-43%	1	25%
DRUG OFFENCES	7	6	1	17%	5	71%
OTHER OFFENCES	7	6	1	17%	3	43%
ROBBERY	4	7	-3	-43%	1	25%
SEXUAL OFFENCES	2	1	1	100%	0	0%
THEFT FROM MOTOR VEHICLES	14	33	-19	-58%	0	0%
THEFT/HANDLING	51	59	-8	-14%	12	24%
THEFT OF MOTOR VEHICLES	6	10	-4	-40%	1	17%
VIOLENCE OFFENCES	48	53	-5	-9%	12	25%
Sum:	250	321	-71	-22%	44	18%



A6 Towns Forum Report

NK10 & NK11 Desborough ASB

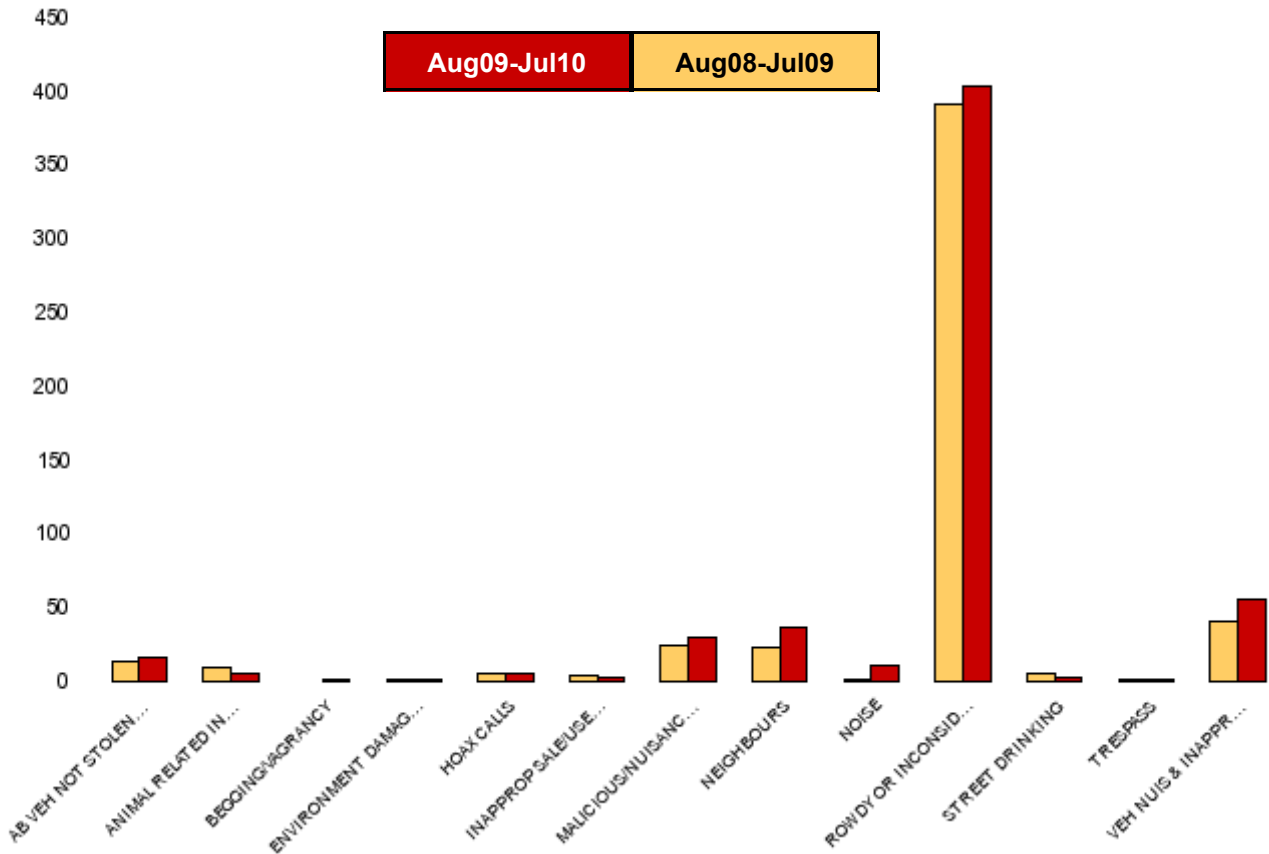
NSIR Closing Category Desc	No of Incidents (Aug09-Jul10)	No of Incidents (Aug08-Jul09)	+/- Incidents	% Change Incidents
AB VEH NOT STOLEN/OBSTRUCT	13	18	-5	-28%
ANIMAL RELATED INC ANTI-SOCIAL	15	7	8	114%
ENVIRONMENT DAMAGE OR LITTER	5	2	3	150%
HOAX CALLS	6	15	-9	-60%
INAPPROP SALE/USE FIREWORKS	2	1	1	100%
MALICIOUS/NUISANCE COMMS	41	41	0	0%
NEIGHBOURS	36	22	14	64%
NOISE	16	2	14	700%
ROWDY OR INCONSIDERATE BEHAV	373	256	117	46%
STREET DRINKING	4	3	1	33%
TRESPASS	0	1	-1	-100%
VEH NUIS & INAPPROP VEH USE	49	32	17	53%
Sum:	560	400	160	40%



A6 Towns Forum Report

NK12 Rothwell - ASB

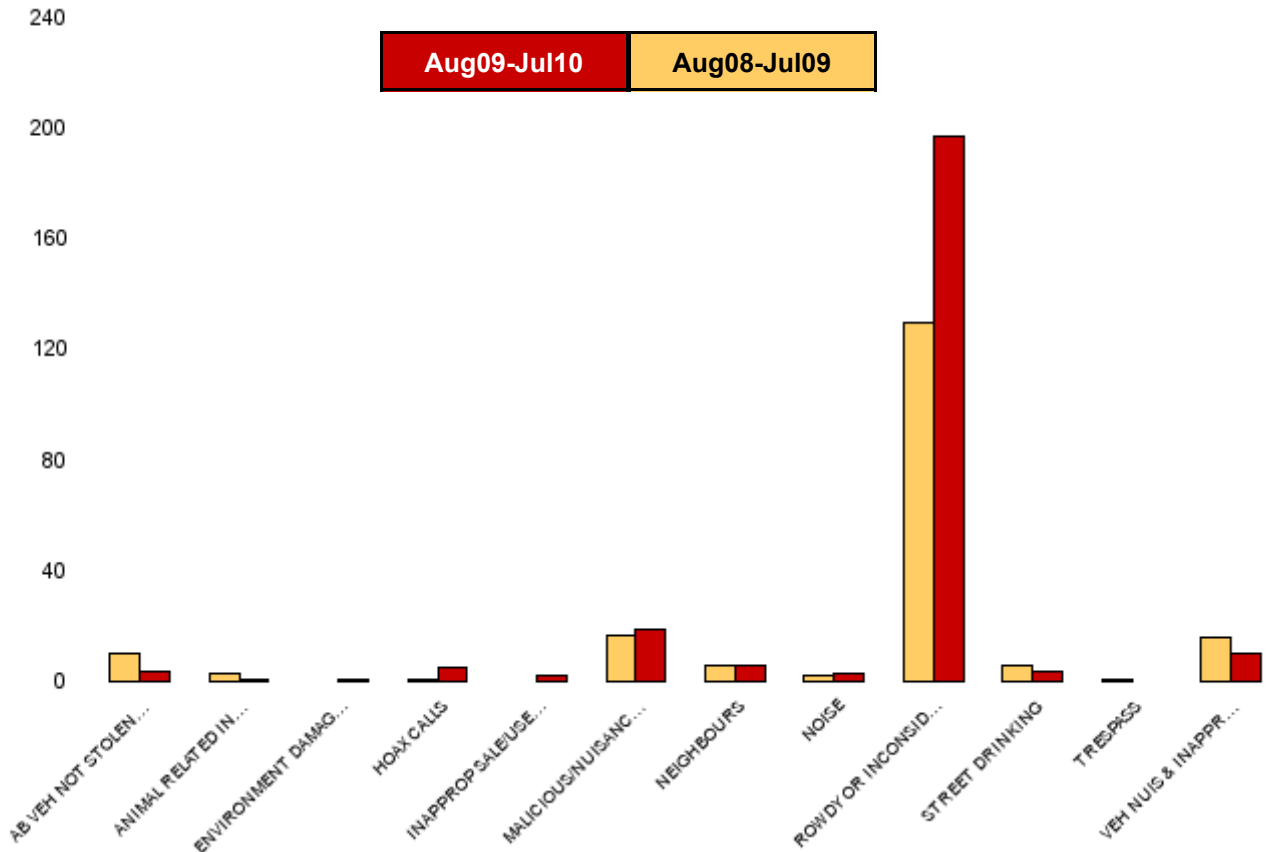
NSIR Closing Category Desc	No of Incidents (Aug09-Jul10)	No of Incidents (Aug08-Jul09)	+/- Incidents	% Change Incidents
AB VEH NOT STOLEN/OBSTRUCT	16	14	2	14%
ANIMAL RELATED INC ANTI-SOCIAL	6	9	-3	-33%
BEGGING/VAGRANCY	1	0	1	0%
ENVIRONMENT DAMAGE OR LITTER	2	1	1	100%
HOAX CALLS	6	5	1	20%
INAPPROP SALE/USE FIREWORKS	3	4	-1	-25%
MALICIOUS/NUISANCE COMMS	30	25	5	20%
NEIGHBOURS	37	23	14	61%
NOISE	11	1	10	1000%
ROWDY OR INCONSIDERATE BEHAV	404	392	12	3%
STREET DRINKING	3	5	-2	-40%
TRESPASS	1	1	0	0%
VEH NUIS & INAPPROP VEH USE	56	41	15	37%
Sum:	576	521	55	11%



A6 Towns Forum Report

NK15 Barton - ASB

NSIR Closing Category Desc	No of Incidents (Aug09-Jul10)	No of Incidents (Aug08-Jul09)	+/- Incidents	% Change Incidents
AB VEH NOT STOLEN/OBSTRUCT	4	10	-6	-60%
ANIMAL RELATED INC ANTI-SOCIAL	1	3	-2	-67%
ENVIRONMENT DAMAGE OR LITTER	1	0	1	0%
HOAX CALLS	5	1	4	400%
INAPPROP SALE/USE FIREWORKS	2	0	2	0%
MALICIOUS/NUISANCE COMMS	19	17	2	12%
NEIGHBOURS	6	6	0	0%
NOISE	3	2	1	50%
ROWDY OR INCONSIDERATE BEHAV	197	130	67	52%
STREET DRINKING	4	6	-2	-33%
TRESPASS	0	1	-1	-100%
VEH NUIS & INAPPROP VEH USE	10	16	-6	-38%
Sum:	252	192	60	31%



A6 Towns Forum Report

NK16 Latimer - ASB

NSIR Closing Category Desc	No of Incidents (Aug09-Jul10)	No of Incidents (Aug08-Jul09)	+/- Incidents	% Change Incidents
AB VEH NOT STOLEN/OBSTRUCT	14	8	6	75%
ANIMAL RELATED INC ANTI-SOCIAL	4	2	2	100%
ENVIRONMENT DAMAGE OR LITTER	0	1	-1	-100%
HOAX CALLS	3	5	-2	-40%
INAPPROP SALE/USE FIREWORKS	0	2	-2	-100%
MALICIOUS/NUISANCE COMMS	36	37	-1	-3%
NEIGHBOURS	26	16	10	63%
NOISE	6	4	2	50%
ROWDY OR INCONSIDERATE BEHAV	223	255	-32	-13%
STREET DRINKING	2	5	-3	-60%
TRESPASS	0	1	-1	-100%
VEH NUIS & INAPPROP VEH USE	39	26	13	50%
Sum:	353	362	-9	-2%

