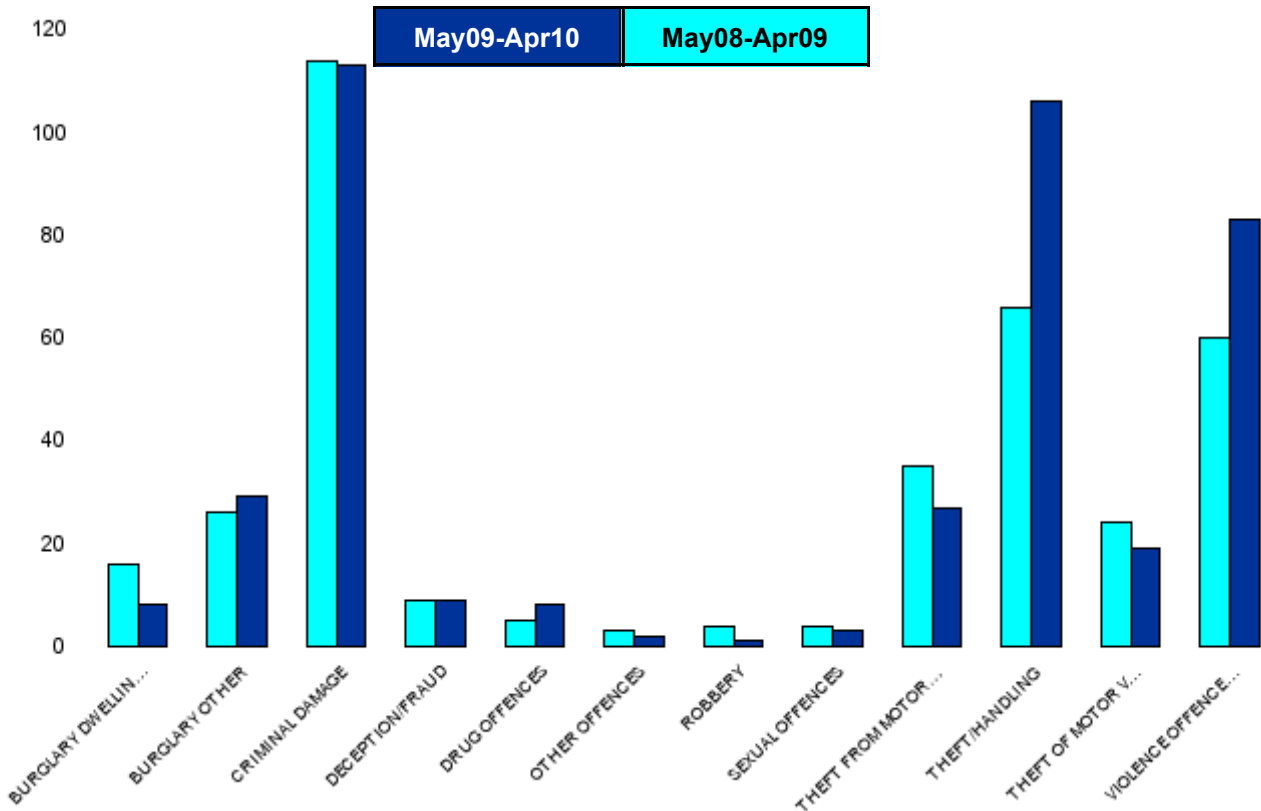


## A6 Towns Forum Report

### NK10 & NK11 Desborough - Crime

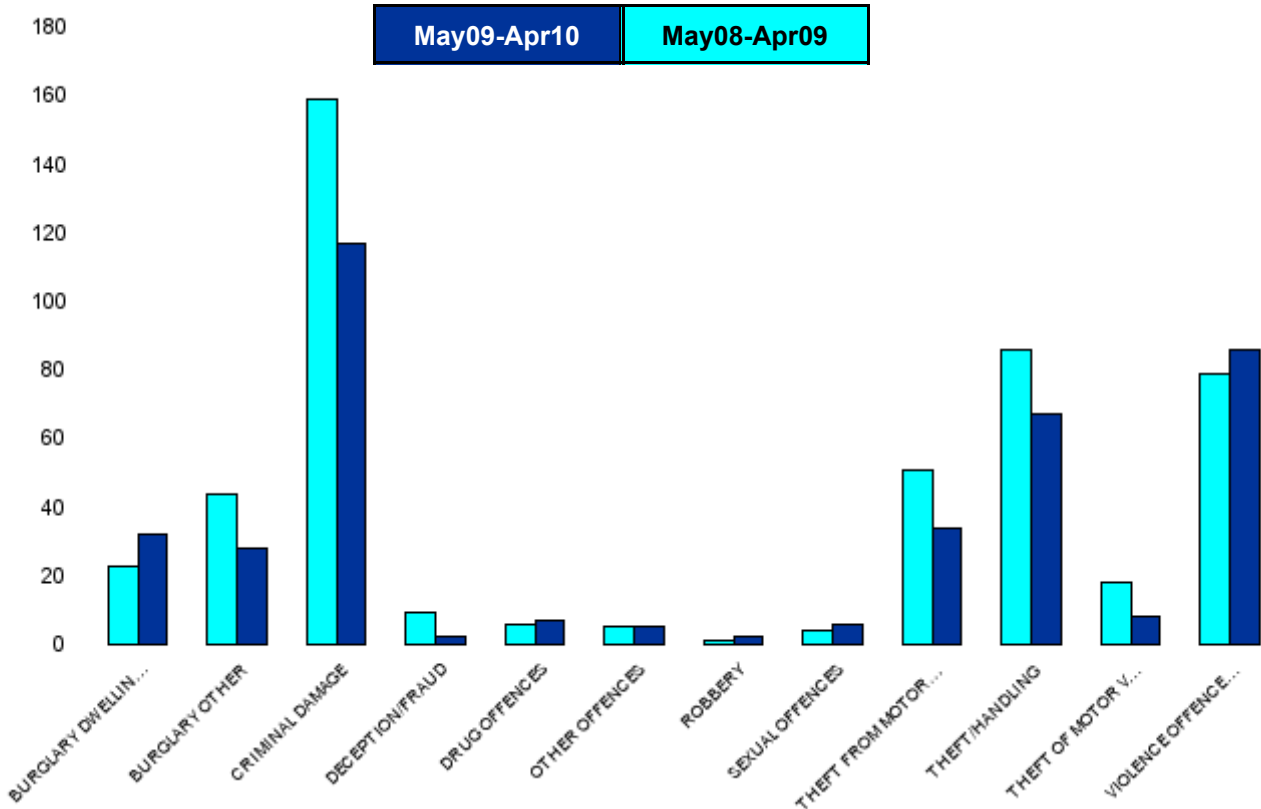
HO Group	No of Crimes (May09-Apr10)	No of Crimes (May08-Apr09)	+/- Crime	% Change	No of Cleared Up Crimes	Detection Rate (Past 12 Months)
BURGLARY DWELLING	8	16	-8	-50%	1	13%
BURGLARY OTHER	29	26	3	12%	4	14%
CRIMINAL DAMAGE	113	114	-1	-1%	7	6%
DECEPTION/FRAUD	9	9	0	0%	2	22%
DRUG OFFENCES	8	5	3	60%	7	88%
OTHER OFFENCES	2	3	-1	-33%	2	100%
ROBBERY	1	4	-3	-75%	0	0%
SEXUAL OFFENCES	3	4	-1	-25%	1	33%
THEFT FROM MOTOR VEHICLES	27	35	-8	-23%	0	0%
THEFT/HANDLING	106	66	40	61%	21	20%
THEFT OF MOTOR VEHICLES	19	24	-5	-21%	0	0%
VIOLENCE OFFENCES	83	60	23	38%	30	36%
<b>Sum:</b>	<b>408</b>	<b>366</b>	<b>42</b>	<b>11%</b>	<b>75</b>	<b>18%</b>



## A6 Towns Forum Report

### NK12 Rothwell - Crime

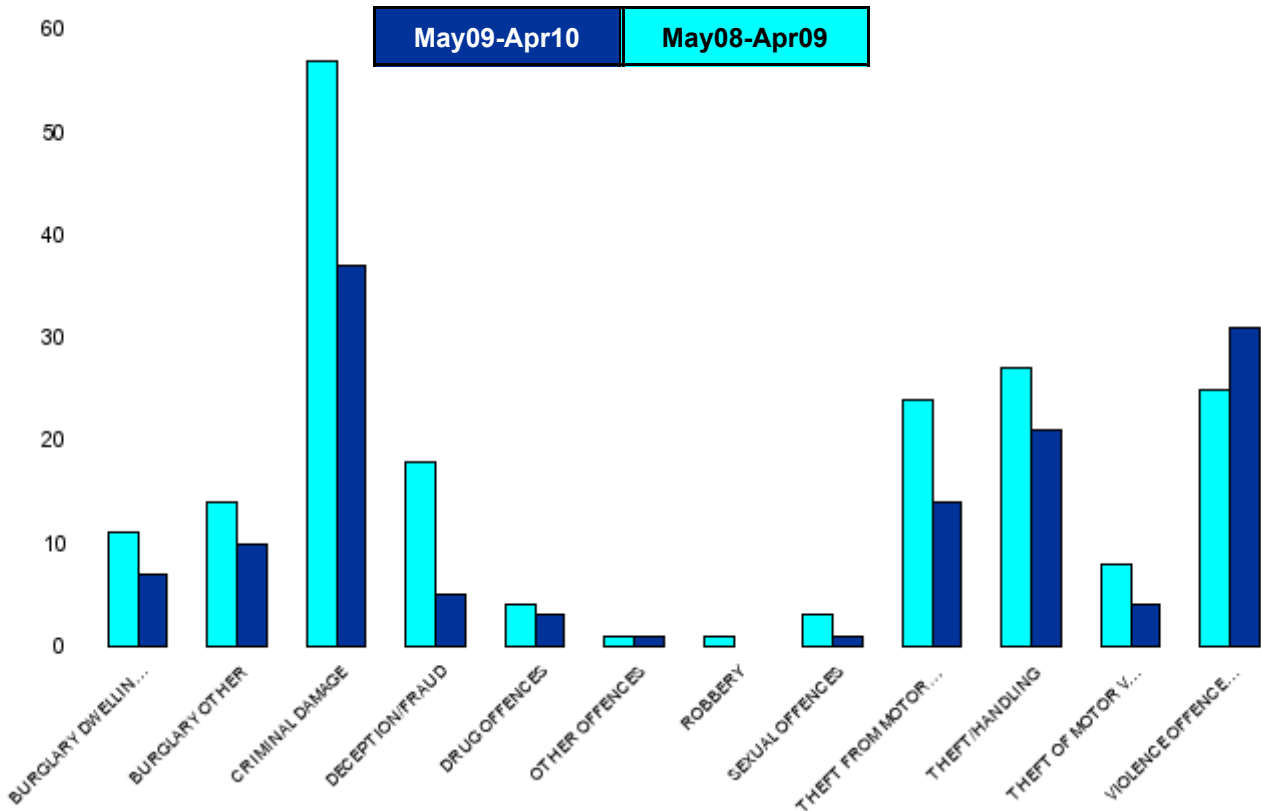
HO Group	No of Crimes (May09-Apr10)	No of Crimes (May08-Apr09)	+/- Crime	% Change	No of Cleared Up Crimes	Detection Rate (Past 12 Months)
BURGLARY DWELLING	32	23	9	39%	3	9%
BURGLARY OTHER	28	44	-16	-36%	2	7%
CRIMINAL DAMAGE	117	159	-42	-26%	28	24%
DECEPTION/FRAUD	2	9	-7	-78%	2	100%
DRUG OFFENCES	7	6	1	17%	5	71%
OTHER OFFENCES	5	5	0	0%	5	100%
ROBBERY	2	1	1	100%	0	0%
SEXUAL OFFENCES	6	4	2	50%	1	17%
THEFT FROM MOTOR VEHICLES	34	51	-17	-33%	2	6%
THEFT/HANDLING	67	86	-19	-22%	14	21%
THEFT OF MOTOR VEHICLES	8	18	-10	-56%	1	13%
VIOLENCE OFFENCES	86	79	7	9%	46	53%
<b>Sum:</b>	<b>394</b>	<b>485</b>	<b>-91</b>	<b>-19%</b>	<b>109</b>	<b>28%</b>



## A6 Towns Forum Report

### NK15 Barton - Crime

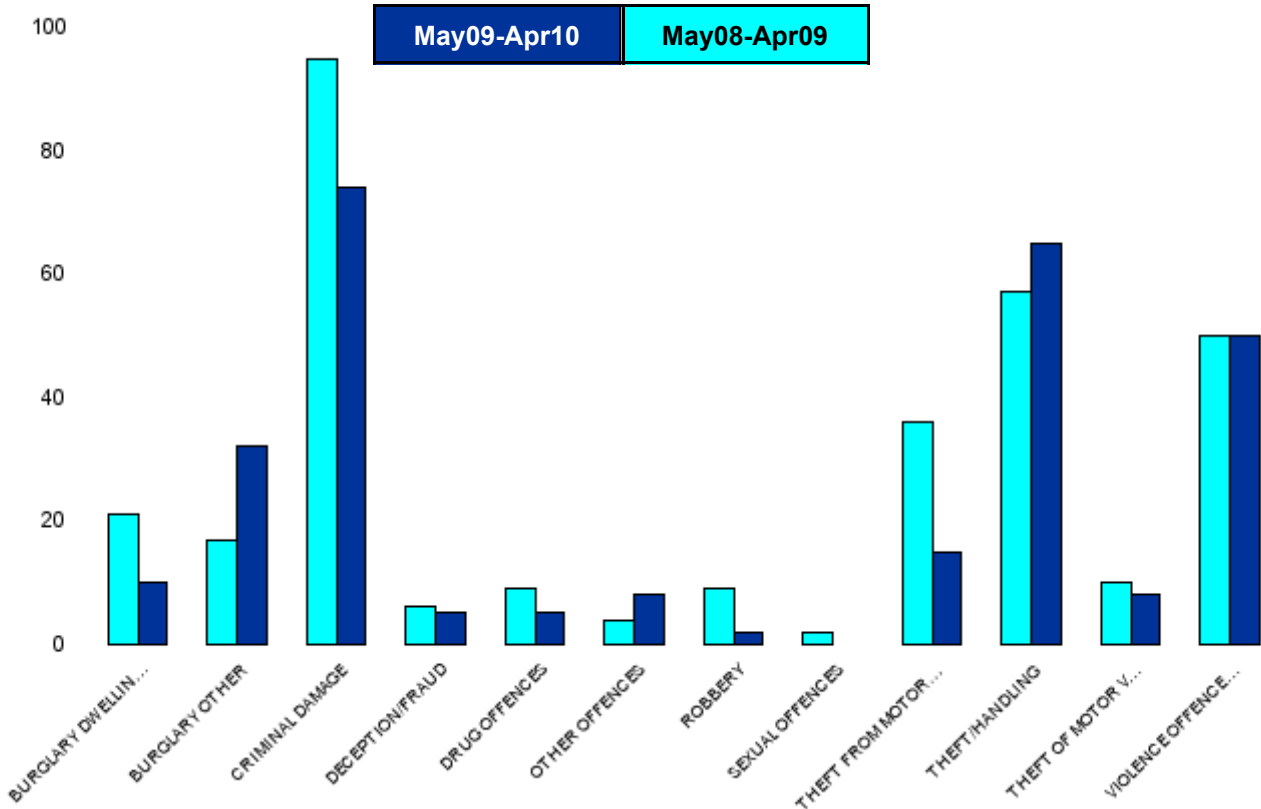
HO Group	No of Crimes (May09-Apr10)	No of Crimes (May08-Apr09)	+/- Crime	% Change	No of Cleared Up Crimes	Detection Rate (Past 12 Months)
BURGLARY DWELLING	7	11	-4	-36%	0	0%
BURGLARY OTHER	10	14	-4	-29%	0	0%
CRIMINAL DAMAGE	37	57	-20	-35%	3	8%
DECEPTION/FRAUD	5	18	-13	-72%	2	40%
DRUG OFFENCES	3	4	-1	-25%	3	100%
OTHER OFFENCES	1	1	0	0%	1	100%
ROBBERY	0	1	-1	-100%	0	0%
SEXUAL OFFENCES	1	3	-2	-67%	1	100%
THEFT FROM MOTOR VEHICLES	14	24	-10	-42%	0	0%
THEFT/HANDLING	21	27	-6	-22%	3	14%
THEFT OF MOTOR VEHICLES	4	8	-4	-50%	1	25%
VIOLENCE OFFENCES	31	25	6	24%	13	42%
<b>Sum:</b>	<b>134</b>	<b>193</b>	<b>-59</b>	<b>-31%</b>	<b>27</b>	<b>20%</b>



## A6 Towns Forum Report

### NK16 Latimer - Crime

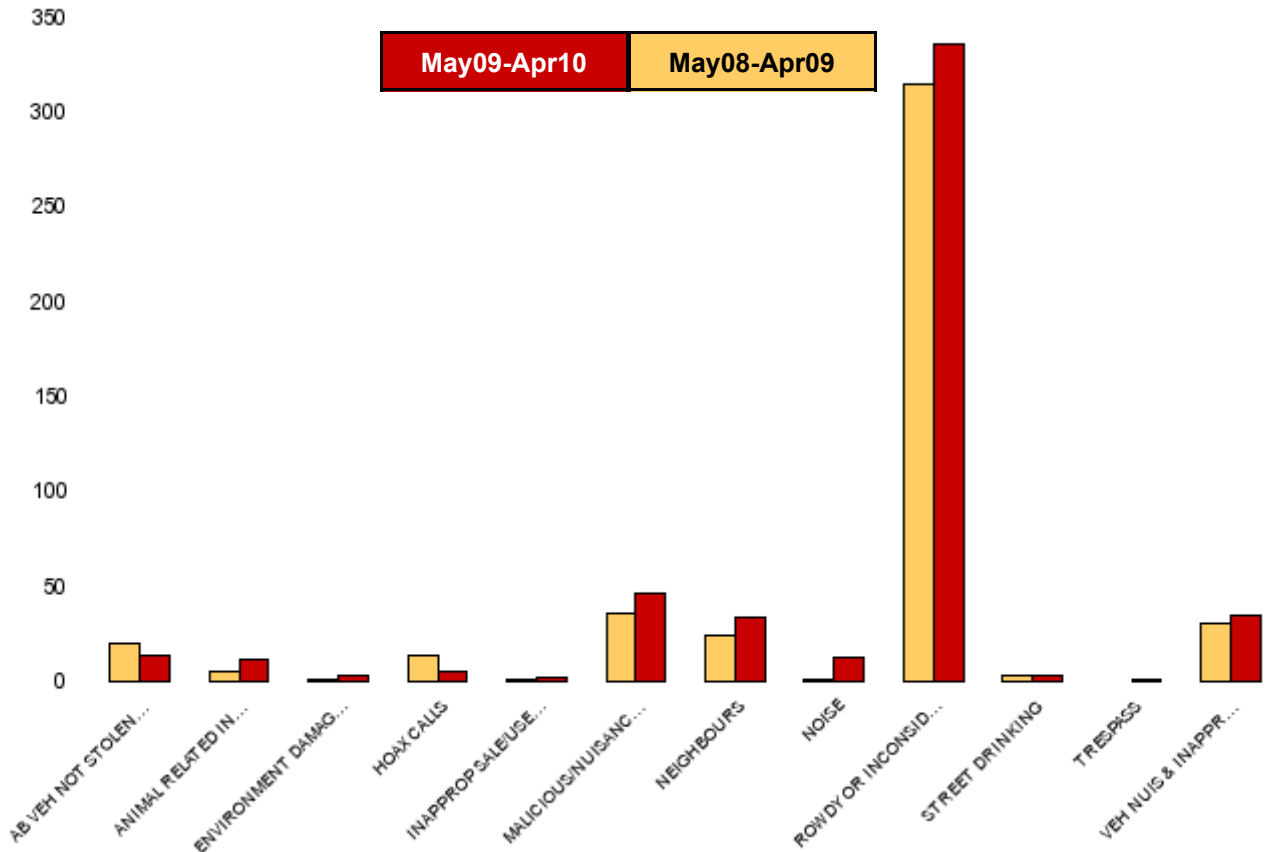
HO Group	No of Crimes (May09-Apr10)	No of Crimes (May08-Apr09)	+/- Crime	% Change	No of Cleared Up Crimes	Detection Rate (Past 12 Months)
BURGLARY DWELLING	10	21	-11	-52%	2	20%
BURGLARY OTHER	32	17	15	88%	3	9%
CRIMINAL DAMAGE	74	95	-21	-22%	7	9%
DECEPTION/FRAUD	5	6	-1	-17%	1	20%
DRUG OFFENCES	5	9	-4	-44%	2	40%
OTHER OFFENCES	8	4	4	100%	4	50%
ROBBERY	2	9	-7	-78%	1	50%
SEXUAL OFFENCES	0	2	-2	-100%	0	0%
THEFT FROM MOTOR VEHICLES	15	36	-21	-58%	1	7%
THEFT/HANDLING	65	57	8	14%	14	22%
THEFT OF MOTOR VEHICLES	8	10	-2	-20%	0	0%
VIOLENCE OFFENCES	50	50	0	0%	15	30%
<b>Sum:</b>	<b>274</b>	<b>316</b>	<b>-42</b>	<b>-13%</b>	<b>50</b>	<b>18%</b>



## A6 Towns Forum Report

### NK10 & NK11 Desborough ASB

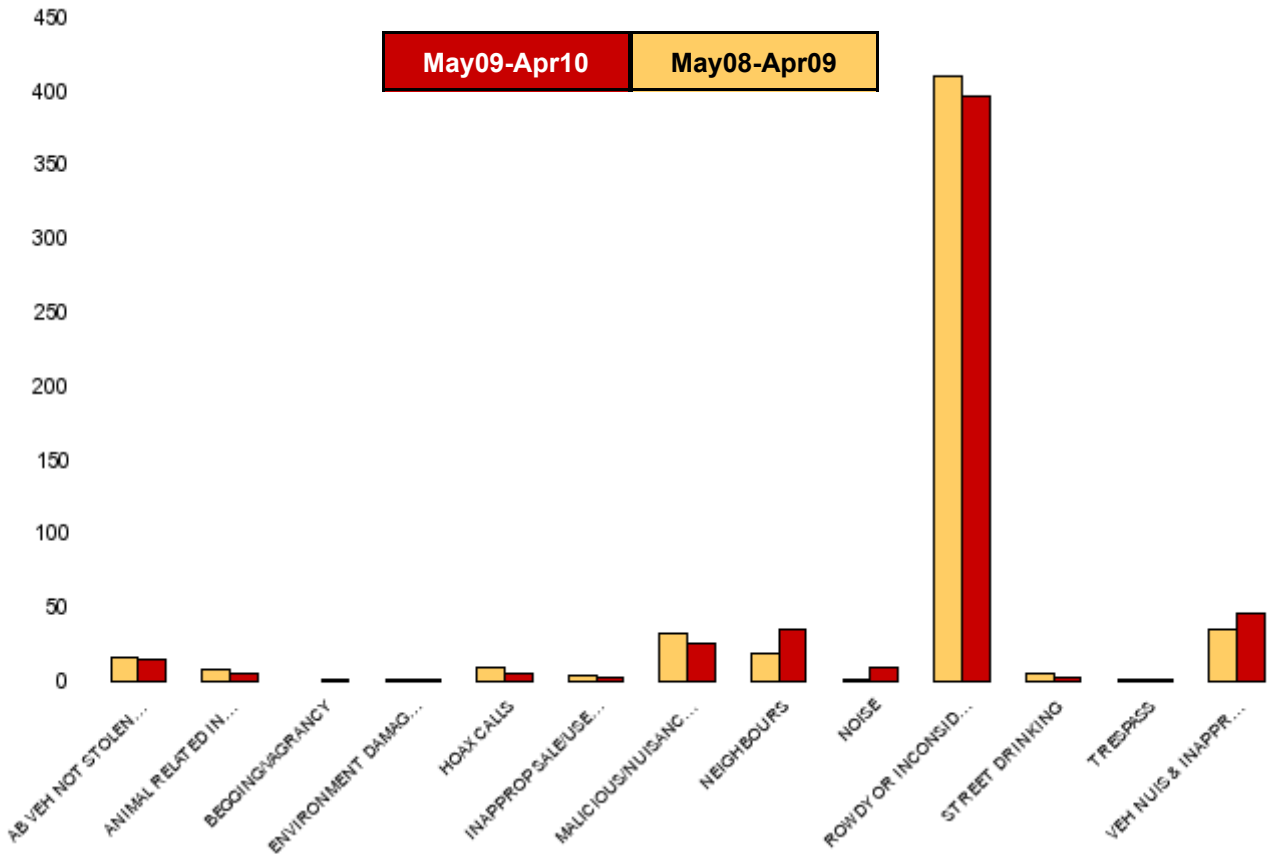
NSIR Closing Category Desc	No of Incidents (May09-Apr10)	No of Incidents (May08-Apr09)	+/- Incidents	% Change Incidents
AB VEH NOT STOLEN/OBSTRUCT	14	20	-6	-30%
ANIMAL RELATED INC ANTI-SOCIAL	12	5	7	140%
ENVIRONMENT DAMAGE OR LITTER	3	1	2	200%
HOAX CALLS	5	14	-9	-64%
INAPPROP SALE/USE FIREWORKS	2	1	1	100%
MALICIOUS/NUISANCE COMMS	47	36	11	31%
NEIGHBOURS	34	24	10	42%
NOISE	13	1	12	1200%
ROWDY OR INCONSIDERATE BEHAV	336	315	21	7%
STREET DRINKING	3	3	0	0%
TRESPASS	1	0	1	0%
VEH NUIS & INAPPROP VEH USE	35	31	4	13%
<b>Sum:</b>	<b>505</b>	<b>451</b>	<b>54</b>	<b>12%</b>



## A6 Towns Forum Report

### NK12 Rothwell - ASB

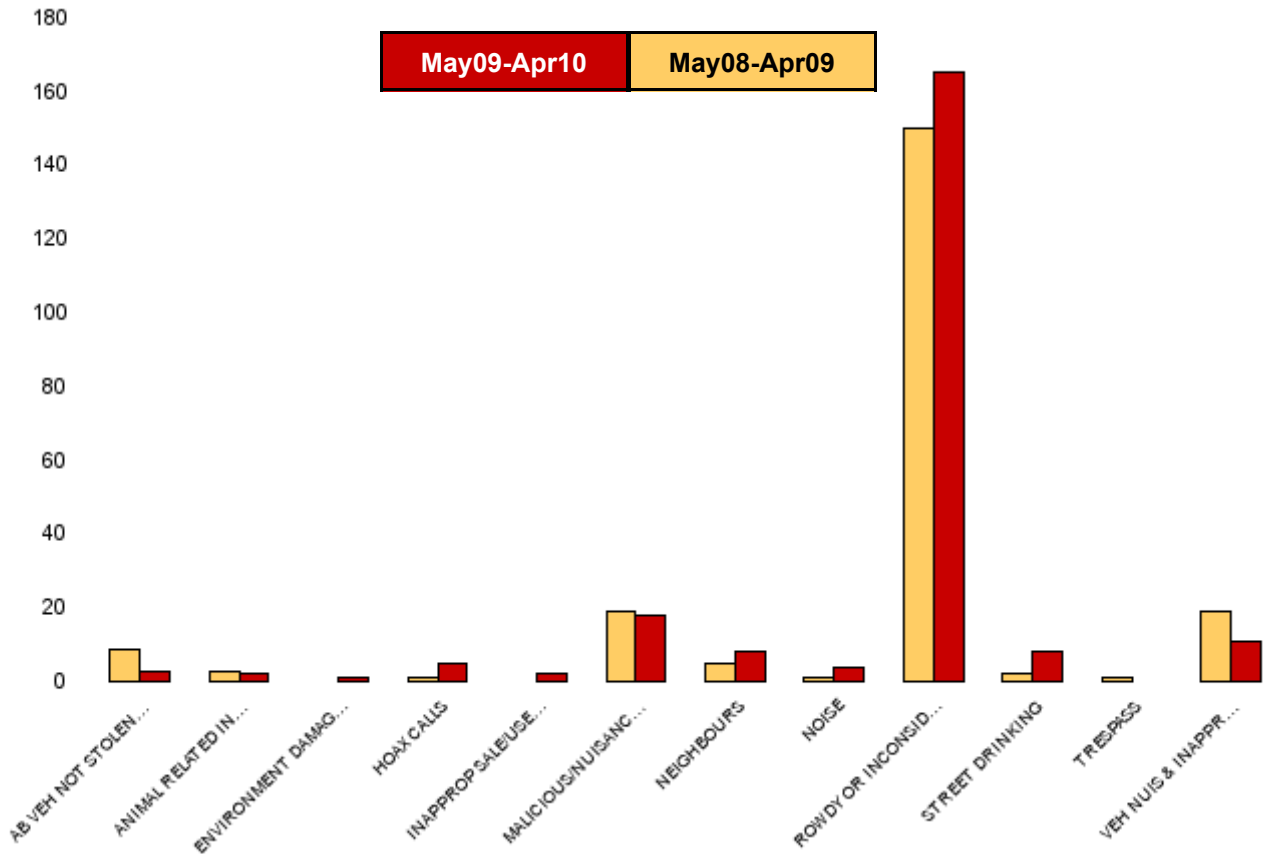
NSIR Closing Category Desc	No of Incidents (May09-Apr10)	No of Incidents (May08-Apr09)	+/- Incidents	% Change Incidents
AB VEH NOT STOLEN/OBSTRUCT	15	17	-2	-12%
ANIMAL RELATED INC ANTI-SOCIAL	6	8	-2	-25%
BEGGING/VAGRANCY	1	0	1	0%
ENVIRONMENT DAMAGE OR LITTER	2	1	1	100%
HOAX CALLS	6	10	-4	-40%
INAPPROP SALE/USE FIREWORKS	3	4	-1	-25%
MALICIOUS/NUISANCE COMMS	26	33	-7	-21%
NEIGHBOURS	36	19	17	89%
NOISE	10	1	9	900%
ROWDY OR INCONSIDERATE BEHAV	397	410	-13	-3%
STREET DRINKING	3	6	-3	-50%
TRESPASS	1	1	0	0%
VEH NUIS & INAPPROP VEH USE	46	35	11	31%
<b>Sum:</b>	<b>552</b>	<b>545</b>	<b>7</b>	<b>1%</b>



## A6 Towns Forum Report

### NK15 Barton - ASB

NSIR Closing Category Desc	No of Incidents (May09-Apr10)	No of Incidents (May08-Apr09)	+/- Incidents	% Change Incidents
AB VEH NOT STOLEN/OBSTRUCT	3	9	-6	-67%
ANIMAL RELATED INC ANTI-SOCIAL	2	3	-1	-33%
ENVIRONMENT DAMAGE OR LITTER	1	0	1	0%
HOAX CALLS	5	1	4	400%
INAPPROP SALE/USE FIREWORKS	2	0	2	0%
MALICIOUS/NUISANCE COMMS	18	19	-1	-5%
NEIGHBOURS	8	5	3	60%
NOISE	4	1	3	300%
ROWDY OR INCONSIDERATE BEHAV	165	150	15	10%
STREET DRINKING	8	2	6	300%
TRESPASS	0	1	-1	-100%
VEH NUIS & INAPPROP VEH USE	11	19	-8	-42%
<b>Sum:</b>	<b>227</b>	<b>210</b>	<b>17</b>	<b>8%</b>



## A6 Towns Forum Report

### NK16 Latimer - ASB

NSIR Closing Category Desc	No of Incidents (May09-Apr10)	No of Incidents (May08-Apr09)	+/- Incidents	% Change Incidents
AB VEH NOT STOLEN/OBSTRUCT	14	17	-3	-18%
ANIMAL RELATED INC ANTI-SOCIAL	3	3	0	0%
ENVIRONMENT DAMAGE OR LITTER	0	2	-2	-100%
HOAX CALLS	3	9	-6	-67%
INAPPROP SALE/USE FIREWORKS	0	2	-2	-100%
MALICIOUS/NUISANCE COMMS	40	32	8	25%
NEIGHBOURS	15	20	-5	-25%
NOISE	3	4	-1	-25%
ROWDY OR INCONSIDERATE BEHAV	208	255	-47	-18%
STREET DRINKING	4	3	1	33%
TRESPASS	0	1	-1	-100%
VEH NUIS & INAPPROP VEH USE	29	23	6	26%
<b>Sum:</b>	<b>319</b>	<b>371</b>	<b>-52</b>	<b>-14%</b>

