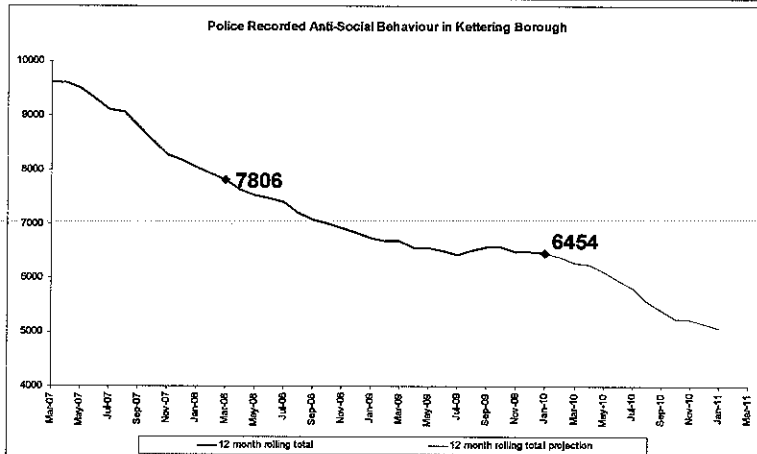


Police Recorded Anti-Social Behaviour Incidents

A -17.0% reduction has been recorded from the baseline

The 2007/8 baseline for Police recorded ASB incidents was 7806 recorded incidents.



Comparative performance over the past 12 months ending in current month

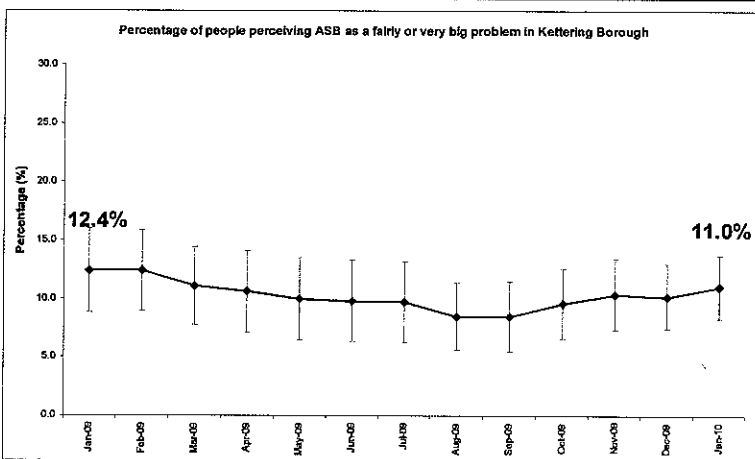
-5.2%

Perception: People from different backgrounds - NI1

Baseline - 2007/08 LGUSS	73.0%
Target - 2010/11 Place Survey	85.3%
Current Position - 2008/09 Place Survey	77.1%
Change from Baseline	+4.1
Significant Change from Baseline	

NI1 measures the percentage of residents who agree that their local area is a place where people from different backgrounds get on well together.

Perception: Anti-Social Behaviour - NI17

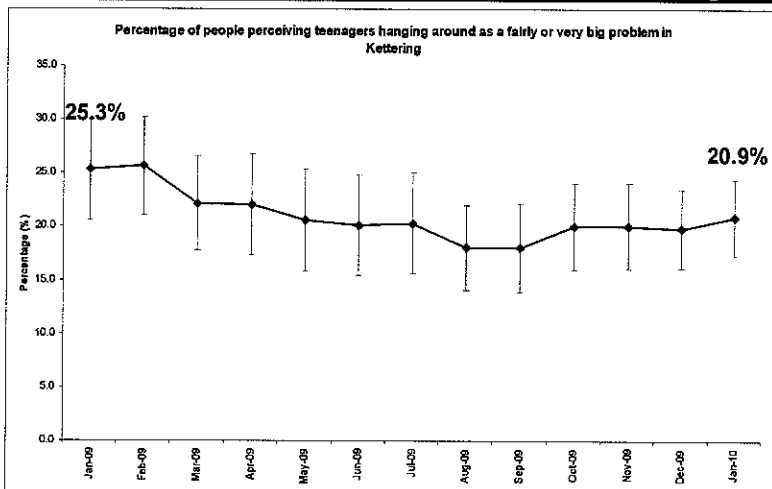


NI17 measures the percentage of residents who perceive a high-level of ASB in their local area.

Baseline - 2007/08 LGUSS	23.0%
Target - 2010/11 Place Survey	19.5%
Current Position - 2008/09 Place Survey	16.3%
Change from Baseline	-6.7
Significant Change from Baseline	

The percentage of people in Kettering perceiving ASB as a fairly big or very big problem as measured by the Police Public Attitudes Survey is shown in the graph to the left.

Perception: Teenagers Hanging Around



Baseline - 2007/08 LGUSS	59.8%
Target - 2010/11 Place Survey	55.7%
Current Position - 2008/09 Place Survey	41.4%
Change from Baseline	-18.4
Significant Change from Baseline	

The percentage of people in Kettering perceiving teenagers hanging around as a fairly big or very big problem as measured by the Police Public Attitudes Survey is shown in the graph to the left.