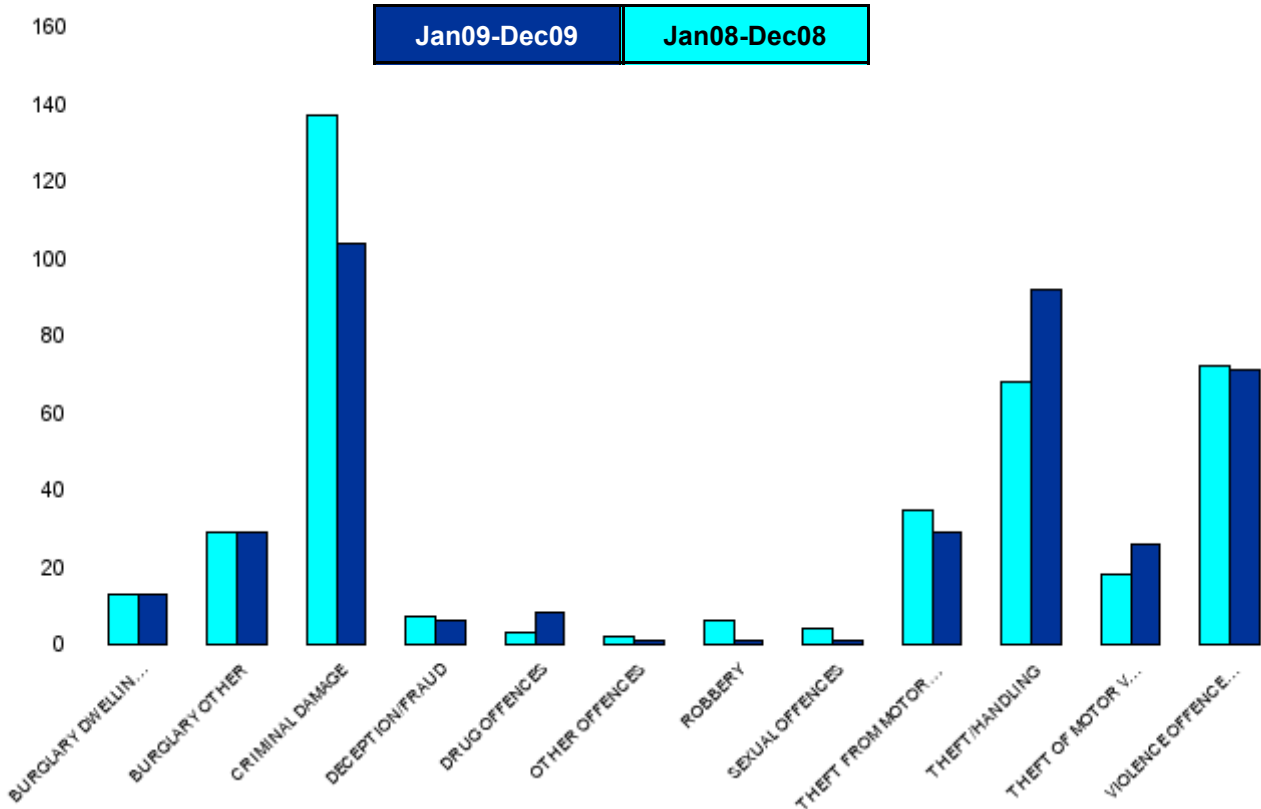


## A6 Towns Forum Report

### NK10 & NK11 Desborough - Crime

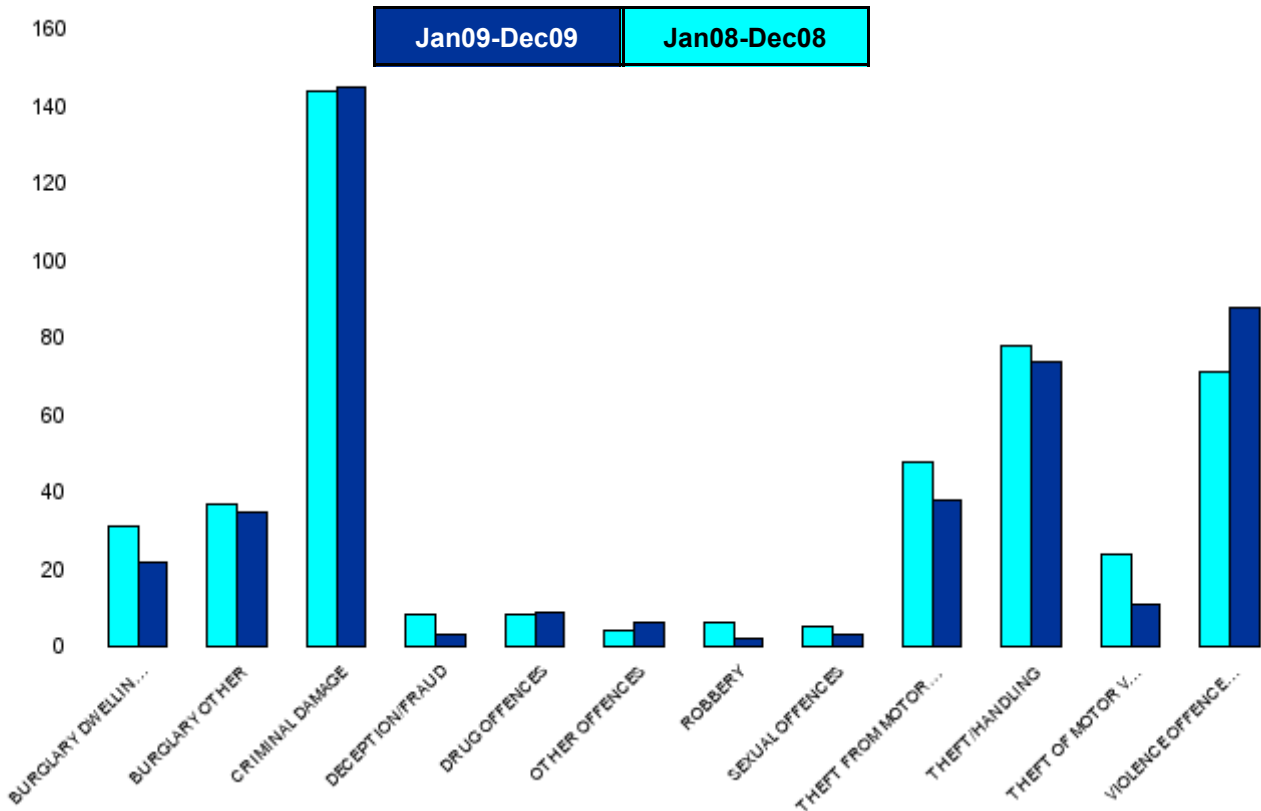
HO Group	No of Crimes (Jan09-Dec09)	No of Crimes (Jan08-Dec08)	+/- Crime	% Change	No of Cleared Up Crimes	Detection Rate (Past 12 Months)
BURGLARY DWELLING	13	13	0	0%	4	31%
BURGLARY OTHER	29	29	0	0%	4	14%
CRIMINAL DAMAGE	104	137	-33	-24%	7	7%
DECEPTION/FRAUD	6	7	-1	-14%	2	33%
DRUG OFFENCES	8	3	5	167%	8	100%
OTHER OFFENCES	1	2	-1	-50%	1	100%
ROBBERY	1	6	-5	-83%	1	100%
SEXUAL OFFENCES	1	4	-3	-75%	1	100%
THEFT FROM MOTOR VEHICLES	29	35	-6	-17%	0	0%
THEFT/HANDLING	92	68	24	35%	22	24%
THEFT OF MOTOR VEHICLES	26	18	8	44%	3	12%
VIOLENCE OFFENCES	71	72	-1	-1%	24	34%
<b>Sum:</b>	<b>381</b>	<b>394</b>	<b>-13</b>	<b>-3%</b>	<b>77</b>	<b>20%</b>



## A6 Towns Forum Report

### NK12 Rothwell - Crime

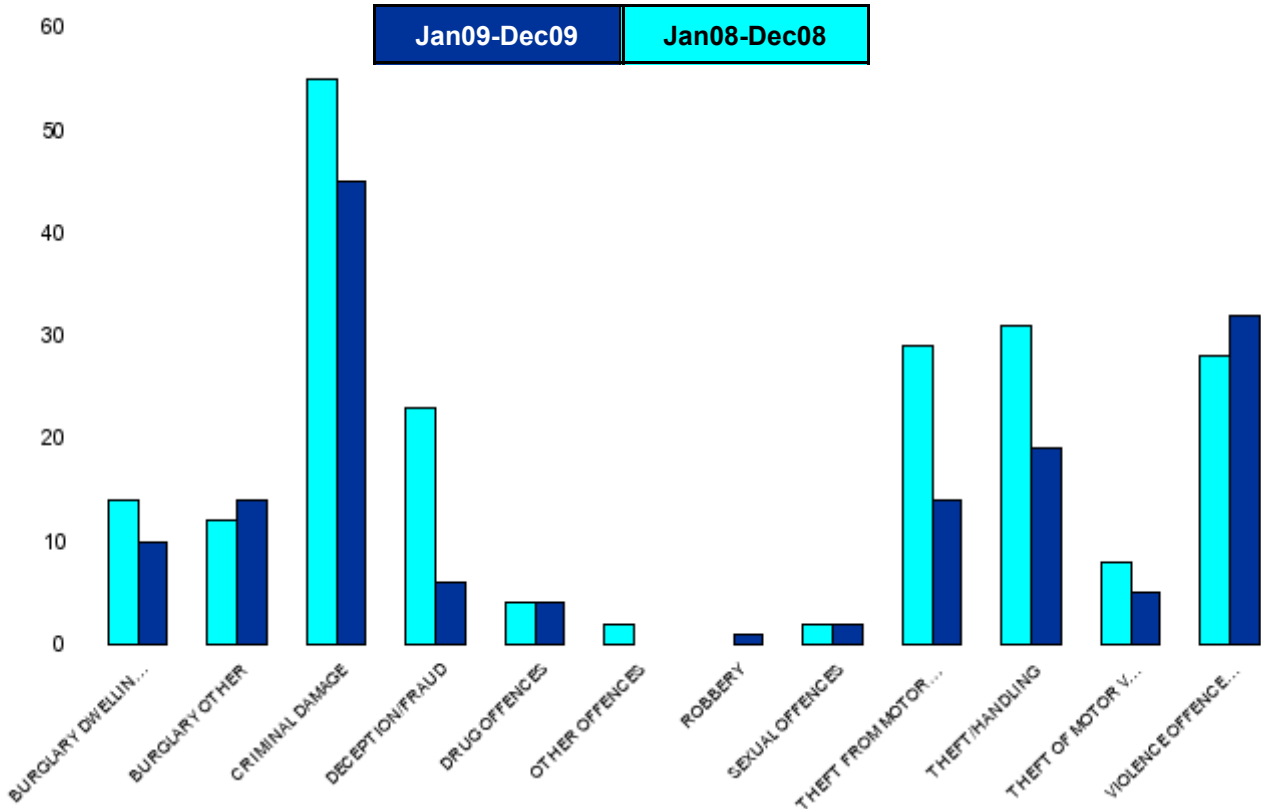
HO Group	No of Crimes (Jan09-Dec09)	No of Crimes (Jan08-Dec08)	+/- Crime	% Change	No of Cleared Up Crimes	Detection Rate (Past 12 Months)
BURGLARY DWELLING	22	31	-9	-29%	3	14%
BURGLARY OTHER	35	37	-2	-5%	3	9%
CRIMINAL DAMAGE	145	144	1	1%	25	17%
DECEPTION/FRAUD	3	8	-5	-63%	1	33%
DRUG OFFENCES	9	8	1	13%	6	67%
OTHER OFFENCES	6	4	2	50%	6	100%
ROBBERY	2	6	-4	-67%	0	0%
SEXUAL OFFENCES	3	5	-2	-40%	1	33%
THEFT FROM MOTOR VEHICLES	38	48	-10	-21%	2	5%
THEFT/HANDLING	74	78	-4	-5%	11	15%
THEFT OF MOTOR VEHICLES	11	24	-13	-54%	3	27%
VIOLENCE OFFENCES	88	71	17	24%	50	57%
<b>Sum:</b>	<b>436</b>	<b>464</b>	<b>-28</b>	<b>-6%</b>	<b>111</b>	<b>25%</b>



## A6 Towns Forum Report

### NK15 Barton - Crime

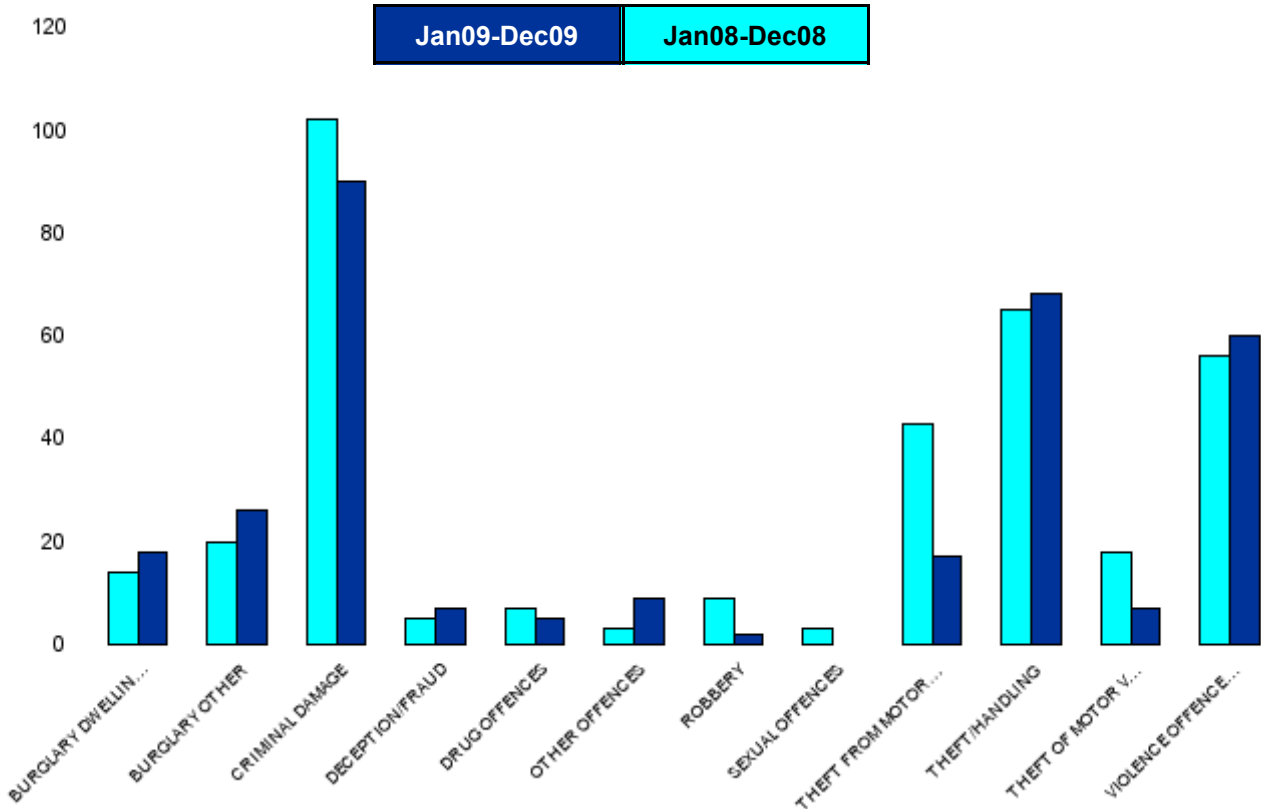
HO Group	No of Crimes (Jan09-Dec09)	No of Crimes (Jan08-Dec08)	+/- Crime	% Change	No of Cleared Up Crimes	Detection Rate (Past 12 Months)
BURGLARY DWELLING	10	14	-4	-29%	0	0%
BURGLARY OTHER	14	12	2	17%	0	0%
CRIMINAL DAMAGE	45	55	-10	-18%	6	13%
DECEPTION/FRAUD	6	23	-17	-74%	2	33%
DRUG OFFENCES	4	4	0	0%	3	75%
OTHER OFFENCES	0	2	-2	-100%	1	0%
ROBBERY	1	0	1	0%	0	0%
SEXUAL OFFENCES	2	2	0	0%	1	50%
THEFT FROM MOTOR VEHICLES	14	29	-15	-52%	0	0%
THEFT/HANDLING	19	31	-12	-39%	3	16%
THEFT OF MOTOR VEHICLES	5	8	-3	-38%	1	20%
VIOLENCE OFFENCES	32	28	4	14%	15	47%
<b>Sum:</b>	<b>152</b>	<b>208</b>	<b>-56</b>	<b>-27%</b>	<b>32</b>	<b>21%</b>



## A6 Towns Forum Report

### NK16 Latimer - Crime

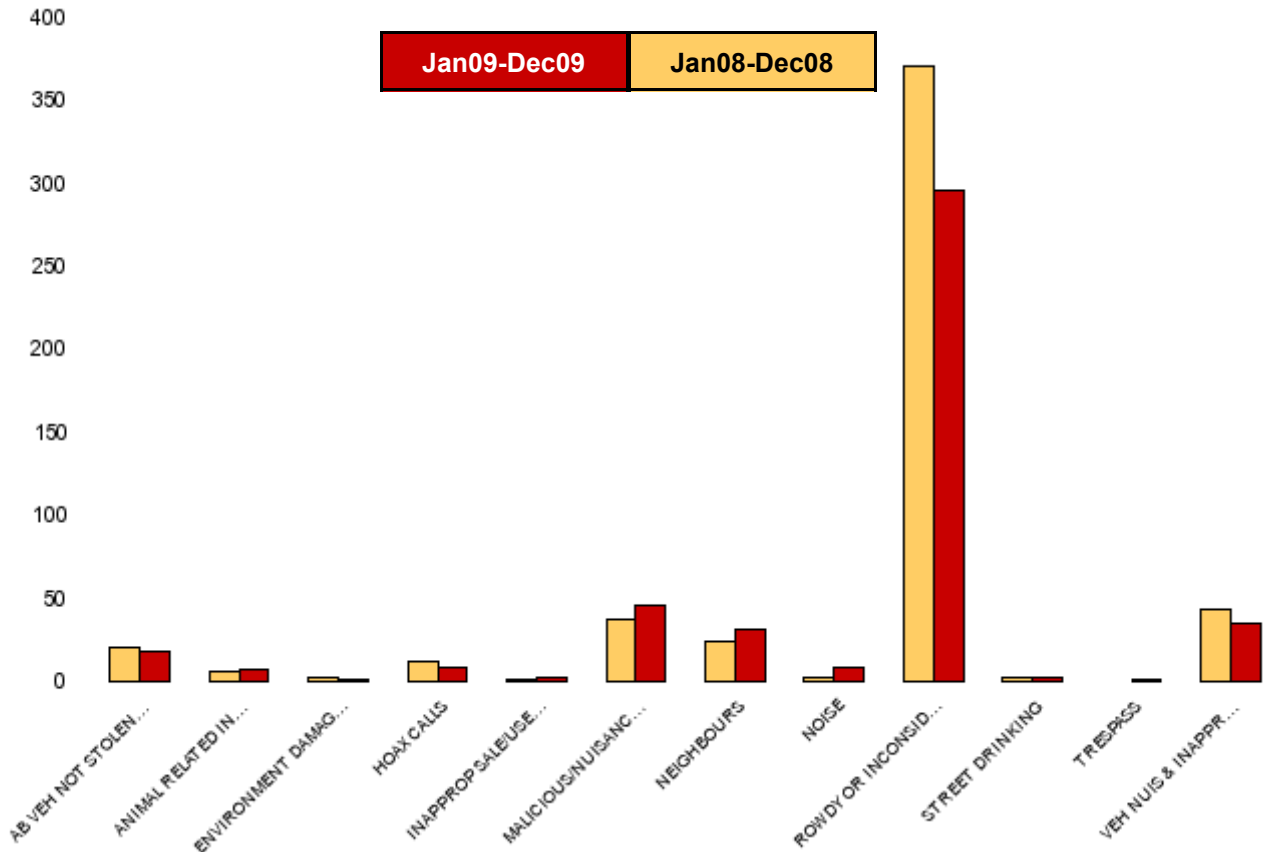
HO Group	No of Crimes (Jan09-Dec09)	No of Crimes (Jan08-Dec08)	+/- Crime	% Change	No of Cleared Up Crimes	Detection Rate (Past 12 Months)
BURGLARY DWELLING	18	14	4	29%	3	17%
BURGLARY OTHER	26	20	6	30%	6	23%
CRIMINAL DAMAGE	90	102	-12	-12%	7	8%
DECEPTION/FRAUD	7	5	2	40%	3	43%
DRUG OFFENCES	5	7	-2	-29%	5	100%
OTHER OFFENCES	9	3	6	200%	4	44%
ROBBERY	2	9	-7	-78%	1	50%
SEXUAL OFFENCES	0	3	-3	-100%	0	0%
THEFT FROM MOTOR VEHICLES	17	43	-26	-60%	3	18%
THEFT/HANDLING	68	65	3	5%	15	22%
THEFT OF MOTOR VEHICLES	7	18	-11	-61%	0	0%
VIOLENCE OFFENCES	60	56	4	7%	20	33%
<b>Sum:</b>	<b>309</b>	<b>345</b>	<b>-36</b>	<b>-10%</b>	<b>67</b>	<b>22%</b>



## A6 Towns Forum Report

### NK10 & NK11 Desborough ASB

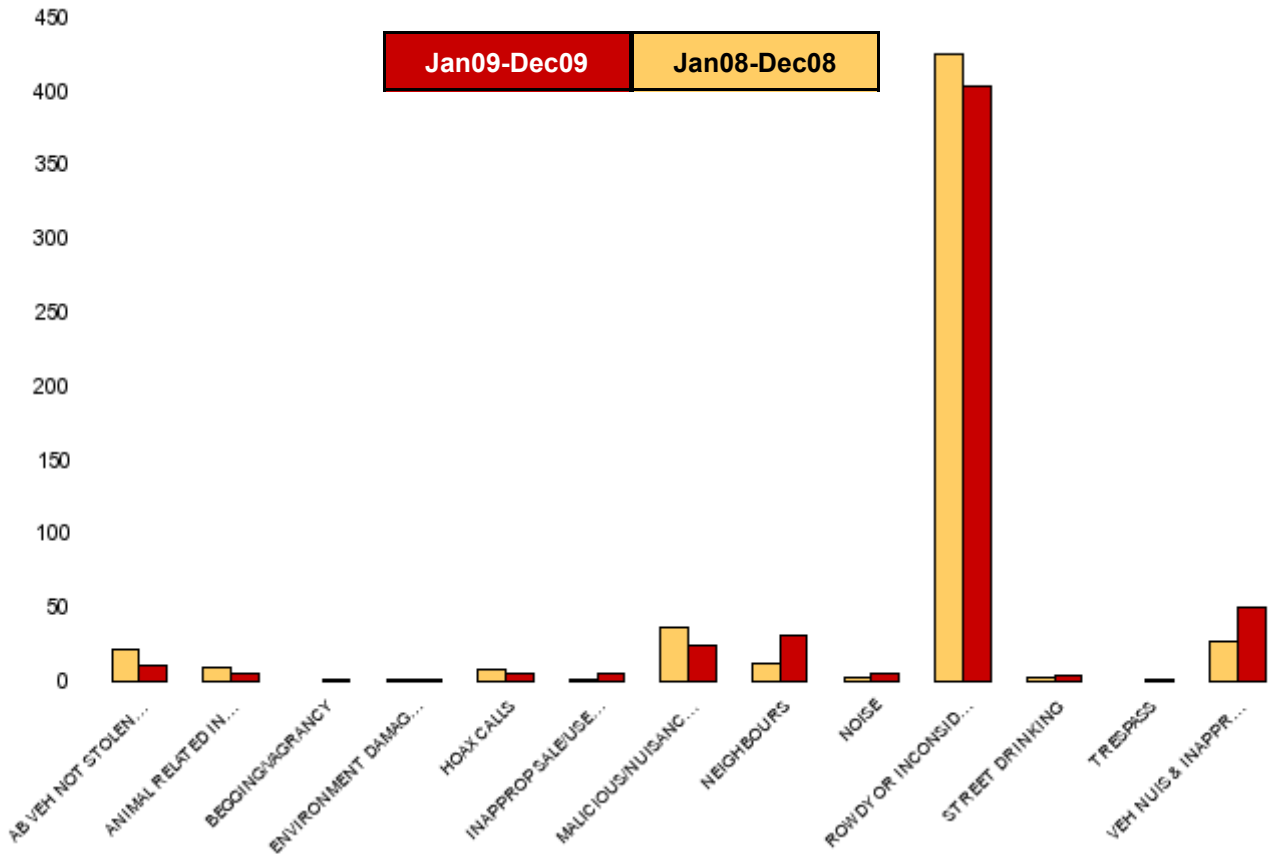
NSIR Closing Category Desc	No of Crimes (Jan09-Dec09)	No of Crimes (Jan08-Dec08)	+/- Incidents	% Change Incidents
AB VEH NOT STOLEN/OBSTRUCT	18	21	-3	-14%
ANIMAL RELATED INC ANTI-SOCIAL	7	6	1	17%
ENVIRONMENT DAMAGE OR LITTER	1	2	-1	-50%
HOAX CALLS	9	12	-3	-25%
INAPPROP SALE/USE FIREWORKS	2	1	1	100%
MALICIOUS/NUISANCE COMMS	46	38	8	21%
NEIGHBOURS	31	24	7	29%
NOISE	8	2	6	300%
ROWDY OR INCONSIDERATE BEHAV	296	371	-75	-20%
STREET DRINKING	3	2	1	50%
TRESPASS	1	0	1	0%
VEH NUIS & INAPPROP VEH USE	35	44	-9	-20%
<b>Sum:</b>	<b>457</b>	<b>523</b>	<b>-66</b>	<b>-13%</b>



# A6 Towns Forum Report

## NK12 Rothwell - ASB

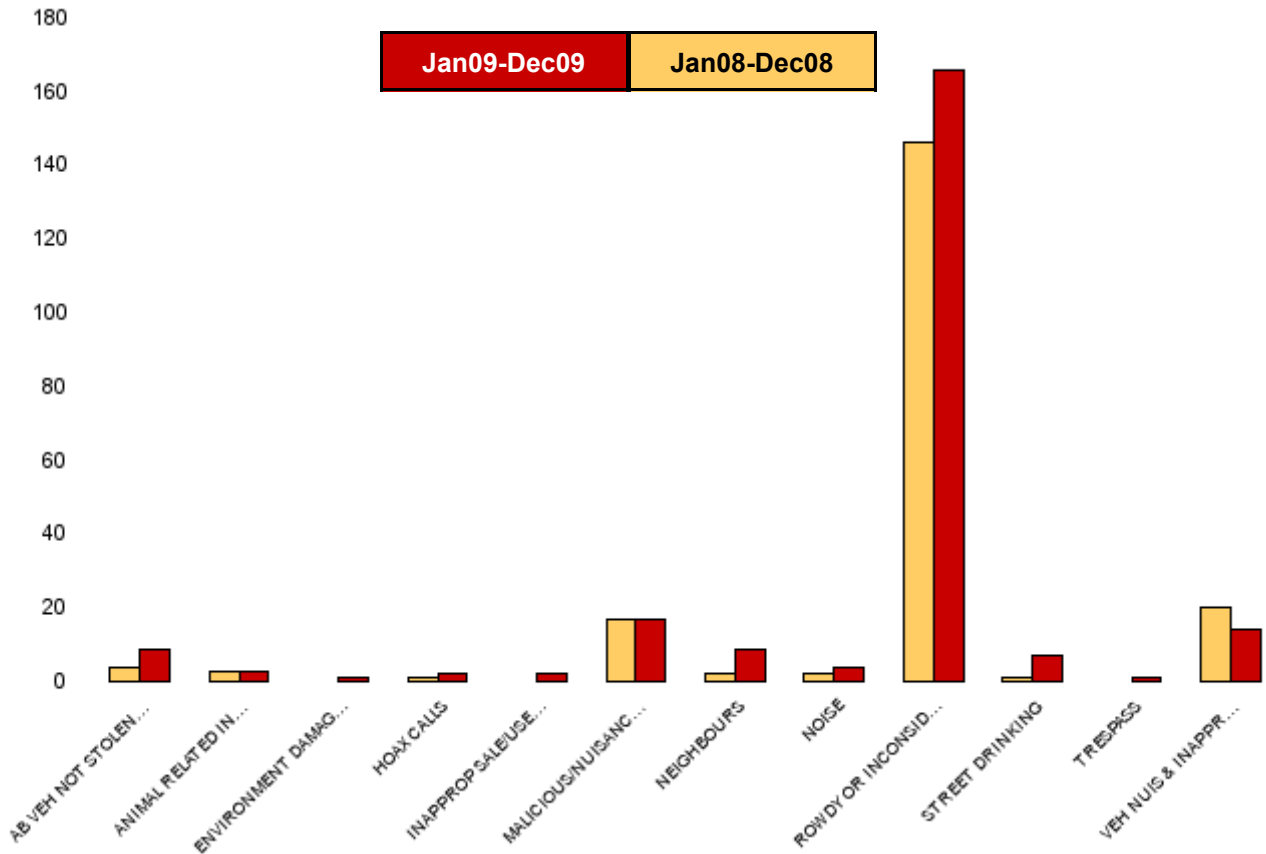
NSIR Closing Category Desc	No of Crimes (Jan09-Dec09)	No of Crimes (Jan08-Dec08)	+/- Incidents	% Change Incidents
AB VEH NOT STOLEN/OBSTRUCT	11	22	-11	-50%
ANIMAL RELATED INC ANTI-SOCIAL	6	10	-4	-40%
BEGGING/VAGRANCY	1	0	1	0%
ENVIRONMENT DAMAGE OR LITTER	2	1	1	100%
HOAX CALLS	5	8	-3	-38%
INAPPROP SALE/USE FIREWORKS	5	2	3	150%
MALICIOUS/NUISANCE COMMS	25	37	-12	-32%
NEIGHBOURS	32	13	19	146%
NOISE	6	3	3	100%
ROWDY OR INCONSIDERATE BEHAV	404	425	-21	-5%
STREET DRINKING	4	3	1	33%
TRESPASS	1	0	1	0%
VEH NUIS & INAPPROP VEH USE	50	27	23	85%
<b>Sum:</b>	<b>552</b>	<b>551</b>	<b>1</b>	<b>0%</b>



## A6 Towns Forum Report

### NK15 Barton - ASB

NSIR Closing Category Desc	No of Crimes (Jan09-Dec09)	No of Crimes (Jan08-Dec08)	+/- Incidents	% Change Incidents
AB VEH NOT STOLEN/OBSTRUCT	9	4	5	125%
ANIMAL RELATED INC ANTI-SOCIAL	3	3	0	0%
ENVIRONMENT DAMAGE OR LITTER	1	0	1	0%
HOAX CALLS	2	1	1	100%
INAPPROP SALE/USE FIREWORKS	2	0	2	0%
MALICIOUS/NUISANCE COMMS	17	17	0	0%
NEIGHBOURS	9	2	7	350%
NOISE	4	2	2	100%
ROWDY OR INCONSIDERATE BEHAV	166	146	20	14%
STREET DRINKING	7	1	6	600%
TRESPASS	1	0	1	0%
VEH NUIS & INAPPROP VEH USE	14	20	-6	-30%
<b>Sum:</b>	<b>235</b>	<b>196</b>	<b>39</b>	<b>20%</b>



## A6 Towns Forum Report

### NK16 Latimer - ASB

NSIR Closing Category Desc	No of Crimes (Jan09-Dec09)	No of Crimes (Jan08-Dec08)	+/- Incidents	% Change Incidents
AB VEH NOT STOLEN/OBSTRUCT	13	20	-7	-35%
ANIMAL RELATED INC ANTI-SOCIAL	4	2	2	100%
ENVIRONMENT DAMAGE OR LITTER	0	2	-2	-100%
HOAX CALLS	3	11	-8	-73%
INAPPROP SALE/USE FIREWORKS	0	2	-2	-100%
MALICIOUS/NUISANCE COMMS	37	31	6	19%
NEIGHBOURS	16	19	-3	-16%
NOISE	6	3	3	100%
ROWDY OR INCONSIDERATE BEHAV	224	287	-63	-22%
STREET DRINKING	4	4	0	0%
TRESPASS	1	0	1	0%
VEH NUIS & INAPPROP VEH USE	28	31	-3	-10%
<b>Sum:</b>	<b>336</b>	<b>412</b>	<b>-76</b>	<b>-18%</b>

