

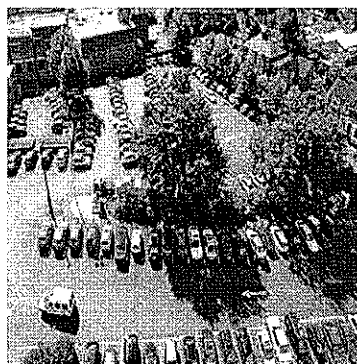
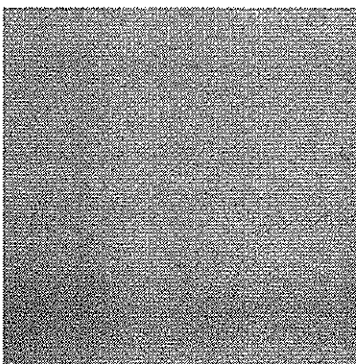
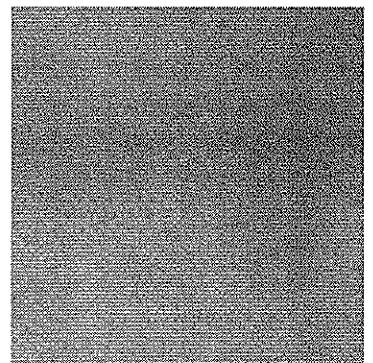
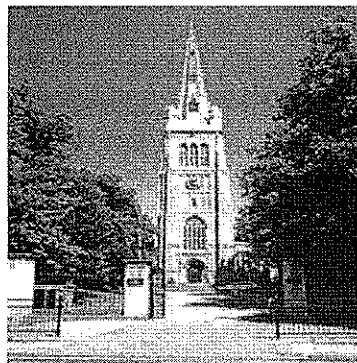
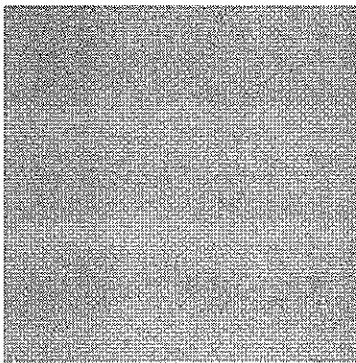


kettering  
borough



# community safety partnership

## THREE YEAR PLAN



**2008  
to  
2011**

*Kettering Borough Council*  
*Municipal Offices*  
*Bowling Green Road*  
*Kettering*  
*NN15 7QX*  
*Telephone: 01536 410333*  
*Fax: 01536 410795*

If you would like more information in your own language, in large print, on tape or in Braille, please contact us at the address or telephone number shown in this document.

Si desea recibir más información en su lengua, en un tamaño de fuente mayor, en casete o en Braille, póngase en contacto con nosotros en la dirección o mediante el número de teléfono que aparecen en este documento.

Se desiderate ulteriori informazioni nella vostra lingua, a caratteri grandi, su cassetta, o in Braille, siete pregati di contattarci all'indirizzo o al numero di telefono indicati sul presente documento.

Se você gostar de mais informação em sua própria língua, a cópia grande, na fita adesiva, ou em braille contata-nos por favor no endereço ou no número de telefone mostrado neste original.

আপনি যদি নিজের ভাষায়, বড় হরফে, টেপ বা ব্রেইলে আরও তথ্য জানতে চান অহলে  
দয়া করে আমাদের সঙ্গে যোগাযোগ করবেন। এই কাগজে আমাদের ঠিকানা ও টেলিফোন  
নম্বর দেওয়া আছে।

如果你需要更多详情，希望有中文版、大字体印刷件、磁带录音或盲文  
版，请按本文件中提供的地址和电话号码与我们联系。

اگر آپ کو مزید معلومات اپنی زبان میں، بڑے حروفوں میں، یا آواز کی صورت میں ٹیپ پر یا بریل  
میں درکار ہیں تو اس دستاویز میں دیے گئے پتے یا ٹیلی فون نمبر پر ہم سے رابطہ کریں۔

Jeżeli chcesz otrzymać więcej informacji w swoim języku ojczystym, dużym drukiem, na taśmie lub alfabetem  
Braille, proszę skontaktować się z nami pod adresem lub numerem telefonu podanym w tym dokumencie.

## **What is the Community Safety Partnership?**

In Kettering Borough we are fully committed to working together to tackle crime and disorder, anti social behaviour, misuse of drugs and any other behaviour which affects the local environment.

The following organisations are all part of the Community Safety Partnership:

- Kettering Borough Council
- Northamptonshire County Council
- Police
- Police Authority
- Fire Authority
- Primary Care Trust

## **What is the three year partnership plan?**

The partnership works with other local agencies, organisations and the local community to put in place an action plan to make Kettering Borough a safe place to live, work and visit.

The plan is reviewed each year to help identify what is most important to the local community.

## **What has been achieved: Progress during life of the 2005-2008 Crime and Disorder Strategy**

Through good Partnership working over the course of the 2005/08 strategy there have been some significant reductions in crime (2003/2004 was used as the baseline).

---

The British Crime Survey showed a 20.4% reduction. This was achieved through:

- Targeting areas with above average crime.
- Reducing crime by targeting those who offend most or cause most harm to their communities.
- The ROSE Project was launched bringing together the various initiatives which tackle (drug dependant in particular) prolific and priority offenders under one scheme. The core purpose of the ROSE Project is to reduce the harm individuals cause to their community and to reduce criminality.
- The Kettering Borough Crime Initiative is a crime reduction partnership between Retailers, the Local Authority including CCTV and the Police. It aims to deter and prevent known offenders from committing retail crime by banning them from entering member's stores, through Exclusion Notices.

- Enforcement operations to disrupt drug markets or acquisitive crimes as a result of them.
- 

### **Criminal Damage**

Criminal Damage showed a 6.6% reduction.

- The Borough of Kettering now has complete coverage through 5 Safer Community Teams which provide local communities with a dedicated team of Police Officers who are visible, accessible and known to local people. They work closely with partner agencies and the community to tackle crime and anti-social behaviour problems identified within the local area.

- There are now Police Community Support Officers, jointly funded by the Police and Kettering Borough Council, working in the Borough of Kettering as part of the Safer Community Teams. Working with Community Beat Officers they provide a visible and accessible uniformed presence on the street, improving the quality of life in the community and offering greater public reassurance.



- Through the local Anti-Social Behaviour Unit and Anti-Social Behaviour Partnership we are working with identified young people at risk of offending. In addition there are a range of youth activities available.
- Dispersal Orders are, when appropriate, being used by the Borough Council and Police and give the Police powers to disperse 2 or more persons.

### **Domestic Burglary**

- Domestic Burglary showed a 37.2% reduction.
- Repeat Domestic Burglary Victimization a 3.5% reduction.
- Distraction Burglary a 53.8% reduction.
- Domestic Burglary, specifically in the Priority Area, a 58.3% reduction.
- All victims of domestic burglary are visited and are provided with a crime prevention package. This applies also to homes adjacent to burgled premises.
- They are also offered a free home security survey, and whenever appropriate door locks, door chains, bolts and window locks etc. are installed free of charge.

- Similarly, providing all affected residents are in agreement, communal alleyways are gated and made secure, again completely free of charge.
- “No cold-calling” schemes have been launched in the Bayes Street and Hodge Way areas of Kettering to tackle rogue traders and distraction burglaries. High visibility signs have been erected in the streets and crime prevention packs delivered to local residents who have been urged to call a special hotline to report any crime or suspicious callers.
- Musicals designed to warn older people about distraction burglaries and bogus callers have taken place. Performances of the “Trickster” shows have been held at the Kettering Athletic Club and the Four Seasons Day Centre.



## Vehicle Crime

Vehicle Crime showed a 38.8% reduction and vehicle crime specifically in the Priority Area a 44.1% reduction. Initiatives included:-

- There are now over 60 cameras linked to the Kettering Borough CCTV Control Room. In addition, in the Priority Area and crime hotspots approximately 500 homes have been provided with a personal CCTV camera for linkage to TV/video recorder.
- 6 Kettering Borough Council car parks and 3 private car parks now have “Park Mark” status which relates to safer parking.
- Operation “Tiger” is a major vehicle crime reduction initiative. Vehicle crime packs have been widely distributed and there have been a number of displays, including use of the mobile Police Station and “Tiger” jeep. Full use is being made of local radio, “tri-signs” and car park tickets carrying crime prevention messages, to raise public awareness.
- Where vehicles are identified as being insecure or with property on display, letters are forwarded to registered keepers and security advice is provided.

## Violent Crime

- Violent Crime showed a 12.4% reduction and violent crime in Kettering Town Centre a 3.6% reduction. Repeat domestic abuse victimisation showed a 9.5% reduction. Initiatives included:-
- Designated Public Places Orders are assisting in controlling on street drinking in parts of Kettering, Burton Latimer and Desborough.
- Operation "Nightsafe" is conducted every Friday and Saturday night and includes regular multi-agency operations.
- Work with security companies, licensees and door staff has led to the role of door supervisor becoming more professional. Most door staff now wear high visibility jackets.
- A "Pubwatch" scheme operates and through the Exclusion Scheme, when appropriate individuals are excluded from all Member premises.
- The "Fare Share" Taxi Scheme has been extremely successful in terms of increased passenger numbers and in effectively clearing the Town Centre.
- The Northern Sunflower Centre together with an outreach facility in Kettering has improved the multi-agency service to victims of domestic abuse.
- The Integrated Domestic Abuse Programme for domestic abuse perpetrators has been implemented to reduce the number of repeat domestic abuse incidents.

## A Safer Kettering Borough 2008-2011

This new Three Year Partnership Plan (April 2008 - March 2011) will build upon past achievements and develop new ideas to tackle crime and disorder.

Partners have agreed to focus on the following broadly defined themes:-

- vulnerable young people
- drugs and alcohol
- environment
- offender management and repeat victimisation
- community cohesion

This decision was based on the premise that prevention is better than cure.

The Community Safety Partnership have identified and agreed on a number of strategic priorities/aims for the next three years. These are shown on the next few pages:





<b>THEME: ENVIRONMENT</b>		
<b>Aim</b>	<b>Our Objectives</b>	<b>Actions</b>
People will feel safer in their communities	To reduce concern about crime and anti-social behaviour.	<ul style="list-style-type: none"> <li>• To identify vulnerable groups and provide targeted crime prevention advice</li> <li>• To identify and utilise media and communication opportunities</li> </ul>
To reduce opportunities for crime and anti-social behaviour	<ul style="list-style-type: none"> <li>• To 'design out' crime and anti-social behaviour in new residential areas and in new non-residential areas</li> <li>• To improve existing built environments to reduce opportunities for crime and disorder</li> </ul>	<ul style="list-style-type: none"> <li>• Police to allocate specific Crime Prevention Design resources</li> <li>• Crime Prevention Officers to conduct environmental surveys to inform partners of opportunities to eliminate environmental contributing factors to crime</li> <li>• Introduce property marking (forensic coding) scheme in identified crime hotspots</li> </ul>
To improve the physical environment and the way it is used	<ul style="list-style-type: none"> <li>• To provide a cleaner environment.</li> <li>• To increase community ownership of space.</li> </ul>	<ul style="list-style-type: none"> <li>• To undertake 5 Kleen Sweep operations each year</li> <li>• Address empty and derelict buildings</li> <li>• Increase levels of community participation in development and management of public green spaces</li> <li>• Increase direct public participation in wider environmental schemes and take 'ownership' of their areas</li> </ul>

**THEME: COMMUNITY COHESION**

To prevent the growth of community tensions

To gain clear understanding of local problems, tensions and cause of concern within different communities in the Borough

- Work with local leaders to act as local champions and provide local community leadership
- Work within Neighbourhood Co-ordination areas to foster improved community cohesion
- Increase the reporting of hate crimes



**THEME: OFFENDER MANAGEMENT AND REPEAT VICTIMISATION**

<b>Aim</b>	<b>Our Objectives</b>	<b>Actions</b>
<p>To reduce repeat victimisation</p>	<ul style="list-style-type: none"> <li>• To reduce the risk of harm to victims of domestic abuse</li> <li>• To reduce re-offending of perpetrators of domestic abuse</li> <li>• To reduce the number of repeat victims of domestic burglary</li> </ul>	<ul style="list-style-type: none"> <li>• Improve the services to victims of domestic abuse</li> <li>• Develop multi-agency support groups</li> <li>• To co-ordinate awareness raising campaigns and promote range of services available</li> <li>• Support the development of perpetrator programmes</li> <li>• Crime prevention advice, survey and security upgrade to be offered to all victims of domestic burglary and potential victims on priority areas</li> <li>• Secure communal alleyways, in particular on priority areas</li> <li>• To identify and offer to all victims of distraction burglary a premium crime prevention and target hardening package. Also identify potential victims and offer an identical service</li> <li>• Identifying and development of "No Cold Call Areas"</li> <li>• Issue of personal CCTV cameras to victims and potential victims of domestic burglary</li> </ul>
<p>To reduce re-offending</p>	<ul style="list-style-type: none"> <li>• To reduce the re-offending rates of prolific and priority offenders</li> <li>• To improve services to ex-prisoners</li> <li>• To increase mental health intervention for offenders</li> </ul>	<ul style="list-style-type: none"> <li>• To improve case management of prolific and priority offenders in Kettering Borough</li> <li>• Provide and manage 4 properties for those prolific and priority offenders leaving prison, and increase access to employment, education and training</li> <li>• Provide an early response to victims or perpetrators of acts of violence or anti-social behaviour</li> </ul>

<b>THEME: VULNERABLE YOUNG PEOPLE</b>		
<b>Aim</b>	<b>Our Objectives</b>	<b>Actions</b>
To reduce crime and anti-social behaviour by young people	<ul style="list-style-type: none"> <li>• To reduce the number of first time entrants to the Youth Justice System.</li> <li>• To reduce re-offending by young offenders.</li> <li>• To increase support to parents.</li> <li>• To improve the provision of activities to divert young people from criminal and anti-social activity.</li> <li>• To improve the perception of children and young people and reduce the perception of anti-social behaviour.</li> </ul>	<ul style="list-style-type: none"> <li>• To deliver restorative justice programmes</li> <li>• Increase provision of diversionary activities during school holidays, focusing on priority areas</li> <li>• Provision of targeted youth support</li> <li>• Reduction in the number of not in education, employment or training 16-18 year olds</li> <li>• Increase the capacity to ensure earlier parenting support is offered where identified</li> <li>• Contribute to a joined up County Strategy for the use of Parenting Contracts and Parenting Orders</li> <li>• Work with local youth organisations to provide Sports Leaders Award levels 1 &amp; 2</li> <li>• Work with local leisure providers to run diversionary after school activities</li> <li>• Increase sign posting of young people to diversionary activities</li> <li>• Increased publicity of young people engaging in positive activities</li> <li>• Annual awards of achievement for young people</li> <li>• To engage with local communities to set up local youth provision, run by local communities</li> </ul>

**THEME: VULNERABLE YOUNG PEOPLE (*continued*)**

Aim	Our Objectives	Actions
<p>To reduce the risk of children and young people becoming victims of crime and anti-social behaviour</p>	<ul style="list-style-type: none"> <li>• To increase children's and young people's awareness of risks to their personal safety</li> <li>• To support children and young people who have witnessed domestic abuse</li> </ul>	<ul style="list-style-type: none"> <li>• Provide structured crime prevention and personal safety advice to priority schools and other young people's premises</li> <li>• Introduce 'Immobilise' to school age children and students by direct inputting and registration of mobile phones and other electrical items</li> <li>• Production of specific and targeted newsletters, leaflets, magazines etc around information on keeping safe and how to report crime and anti-social behaviour, and get advice and support</li> <li>• Introduce the Northamptonshire Police Young Detectives Scheme</li> <li>• Improve the links and referral pathways between children's services as part of the integrated approach to domestic abuse</li> <li>• Improve and develop safe child contact arrangements for families who have experienced domestic abuse</li> </ul>

**THEME: DRUGS AND ALCOHOL**

Aim	Our Objectives	Actions
<p>To reduce violent crime</p>	<ul style="list-style-type: none"> <li>• To reduce violence in Kettering associated with the night time economy</li> <li>• To reduce alcohol and drug related domestic abuse</li> <li>• To reduce residual violence</li> </ul>	<ul style="list-style-type: none"> <li>• Encourage every licensee to join the Kettering Pubwatch Scheme</li> <li>• Promote the development of transportation schemes that help disperse the public from the town centre</li> <li>• Implement a programme of multi-agency visits to targeted problem premises</li> <li>• To use test purchasing effectively in all types of licensed premises and take positive action against those caught selling alcohol to under age drinkers</li> <li>• To discourage drinks promotions that are outside of British Beer and Pub Association supportive guidance</li> <li>• Introduce polycarbonate replacements in stand up Town Centre licensed premises</li> <li>• To develop the gathering of data within KGH Accident and Emergency and Ambulance Service and share with partners to help address the problem of alcohol related crime and disorder</li> <li>• Continue to improve the overall effectiveness of the CCTV system</li> </ul>

<b>THEME: DRUGS AND ALCOHOL (<i>continued</i>)</b>		
<b>Aim</b>	<b>Our Objectives</b>	<b>Actions</b>
To reduce violent crime ( <i>continued</i> )		<ul style="list-style-type: none"> <li>• Improve cross sector multi-agency working to safeguard victims of domestic abuse and to address offending; where drug and/or alcohol misuse is a factor</li> <li>• Improved information sharing between domestic abuse and drug and alcohol agencies</li> </ul>
To promote sensible drinking	<ul style="list-style-type: none"> <li>• To reduce binge drinking</li> <li>• To reduce alcohol consumption in young people</li> </ul>	<ul style="list-style-type: none"> <li>• Identification of people who risk poor health through misuse of alcohol</li> <li>• Introduction of interventions such as motivational interviewing, advice linked with follow up with a professional agency</li> </ul>
To reduce drug related crime	<ul style="list-style-type: none"> <li>• To reduce vehicle crime</li> <li>• To reduce retail crime</li> </ul>	<ul style="list-style-type: none"> <li>• The development of the existing 'vehicle insecurity' network of wardens, police and CCTV (and subsequent registered keeper follow up letters and crime prevention advice) to incorporate Neighbourhood Watch</li> <li>• Develop the personal CCTV initiative to focus on high vehicle crime priority areas</li> <li>• Lighting maintenance programme giving priority to high vehicle crime locations</li> <li>• Target high vehicle crime priority areas through leafleting, letters, posters, roadshows and other marketing media promoting car security</li> </ul>

<b>THEME: DRUGS AND ALCOHOL (continued)</b>		
<b>Aim</b>	<b>Our Objectives</b>	<b>Actions</b>
To reduce drug related crime (continued)		<ul style="list-style-type: none"> <li>• Develop information and intelligence around theft of car parts and improve community intelligence and local Autotrade awareness</li> <li>• Kettering Borough Crime Initiative to develop a business plan outlining how they will develop membership and services towards a reduction in retail theft</li> <li>• Identify top 6 retail outlets suffering the highest levels of retail theft and encourage the uptake of Crime Prevention advice, surveys and security upgrades</li> <li>• Identification of target schools where pupils found committing or suspected of shoplifting. To be followed up with input conveying the personal, social and economical implications of shoplifting</li> <li>• Introduce a formal and structured regular programme of truancy sweeps focussing on retail centres</li> <li>• Identification of commercial premises suffering repeat burglary and encourage take up of crime prevention advice, surveys and security upgrades</li> <li>• Targeting of individuals known to be involved in retail theft to support drugs or substance misuse, through both enforcement and addiction support</li> </ul>



<b>THEME: DRUGS AND ALCOHOL (<i>continued</i>)</b>		
<b>Aim</b>	<b>Our Objectives</b>	<b>Actions</b>
To reduce alcohol related anti-social behaviour and criminal damage	To reduce anti-social behaviour associated with underage drinking	<ul style="list-style-type: none"> <li>• Safer Community Teams to ensure that anti-social behaviour incidents where alcohol is involved are referred to Anti-Social Behaviour Unit</li> <li>• Safer Community Teams and Trading Standards to target premises where underage sales is identified as a problem</li> <li>• Trading Standards to undertake test purchasing which is focused and structured to peaks in drinking such as summer holidays</li> <li>• Provide targeted alcohol awareness and education training for young people and parents</li> </ul>
To improve treatment for alcohol and drug users	To improve shared care provision	<ul style="list-style-type: none"> <li>• Actively seek out general practitioners to take forward local shared care</li> <li>• To establish a fully functioning direct access clinic for individuals to receive advice, information and treatment for harms of drug and alcohol abuse</li> <li>• To develop the direct access clinic into a "one stop shop" for other services to involve including housing, training and employment</li> </ul>

## **HEADLINE TARGETS**

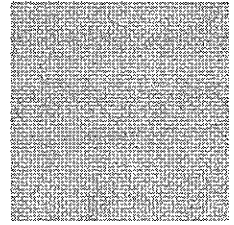
The Community Safety Partnership agreed the following headline indicators for measuring performance on crime and disorder over the next three years (until the end of 2010/2011):

<b>Target</b>	<b>Baseline</b>
To reduce vehicle crime within Kettering Borough by 5% by March 2011 (867 crimes)	913 crimes (2007/2008)
To reduce domestic burglary within Kettering Borough by 4% by March 2011 (290 crimes)	303 crimes (2007/2008)
To reduce criminal damage within Kettering Borough by 5% by March 2011 (1639 crimes)	1726 crimes (2007/2008)
To reduce violent crime within Kettering Borough by 8% by March 2011 (1179 crimes)	1282 crimes (2007/2008)
To reduce violent crime in Kettering Town Centre by 8% by March 2011 (297 crimes)	323 crimes (2007/2008)
To reduce burglary of commercial premises within Kettering Borough by 10% by March 2011 (250 crimes)	278 crimes (2007/2008)
To reduce serious acquisitive crime within Kettering Borough by 4% by March 2011 (1238 crimes)	1290 crimes (2007/2008)
To reduce assault with injury within Kettering Borough by 8% by March 2011 (573 crimes)	623 crimes (2007/2008)

Target	Baseline
To reduce the proportion of domestic crimes that are repeats within Kettering Borough to 18% by March 2011	21% (12 months to February 2008)
To reduce the proportion of domestic burglaries that are repeats within Kettering Borough to 3% by March 2011	3.3% (10 repeat crimes)
To reduce the number of crimes committed against children of school age (under 16 year olds) by 8% by March 2011 (161 crimes)	176 crimes (2007/2008)
19.5% of residents perceiving a high level of anti-social behaviour (2010/2011 Place Survey)	23% (2006/2007 LGUSS)
85.3% of people who feel that people from different backgrounds get on well together (2010/2011 Place Survey)	81.6% (2006/2007 LGUSS)
55.7% stating that teenagers hanging around on the streets is a problem in their area (2010/2011 Place Survey)	59.8% (2006/2007 LGUSS)
Public confidence – % agree that the police and local council are dealing with the anti-social behaviour and crime issues that matter in the area (2010/2011 Place Survey)	Baseline data will be available from Place Survey later during 2008

**PRODUCED BY MEMBERS OF  
KETTERING BOROUGH COMMUNITY SAFETY PARTNERSHIP:-**

**Kettering Borough Council 01536 534378**



**Northamptonshire Police Authority 01604 887430**

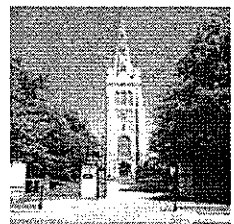


**Northamptonshire Police 08453 700700**



**Northamptonshire County Council 01604 236236**

**Trading Standards 01604 707900**



**Northamptonshire Fire & Rescue  
(Kettering) 01604 797000**

**Northamptonshire Teaching  
Primary Care Trust 01536 480300**



**National Probation Service  
(Northamptonshire Area) 01536 463920**



**Northamptonshire Youth Offending  
Team (North) 01536 533800**



**Northamptonshire Drug and  
Alcohol Action Team 01604 237604**

**Northamptonshire Victim Support  
(Kettering) 01536 417119**



**ComPaSS Unit 01604 703573**