

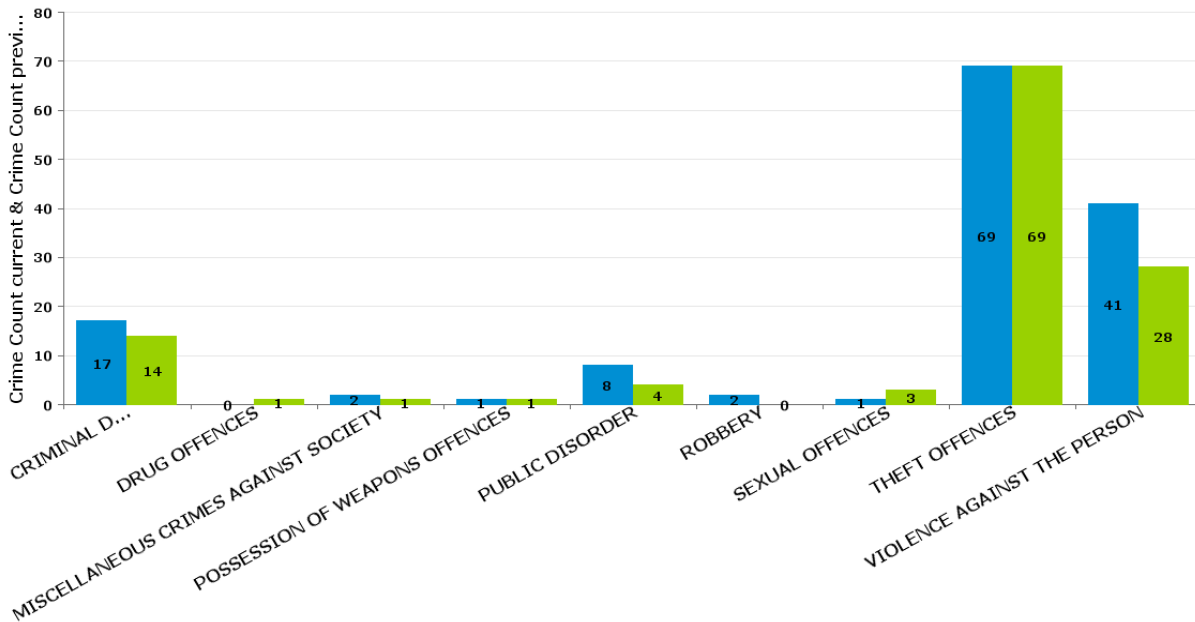
Kettering Rural

QUEEN ELEANOR AND BUCCLEUCH

Crime Group	Current 12 Months	Previous 12 Months	+/- Crime	% Change	Number of Resolved Crimes	Resolution Rate (12 Months)
CRIMINAL DAMAGE & ARSON	17	14	3	21.43%	0	0.00%
DRUG OFFENCES	0	1	-1	-100.00%	1	#DIV/0
MISCELLANEOUS CRIMES AGAINST SOCIETY	2	1	1	100.00%	1	50.00%
POSSESSION OF WEAPONS OFFENCES	1	1	0	0.00%	0	0.00%
PUBLIC DISORDER	8	4	4	100.00%	1	12.50%
ROBBERY	2	0	2	#DIV/0	0	0.00%
SEXUAL OFFENCES	1	3	-2	-66.67%	0	0.00%
THEFT OFFENCES	69	69	0	0.00%	3	4.35%
VIOLENCE AGAINST THE PERSON	41	28	13	46.43%	6	14.63%
Sum:	141	121	20	16.53%	12	8.51%

Crime

■ Crime Count current ■ Crime Count previous



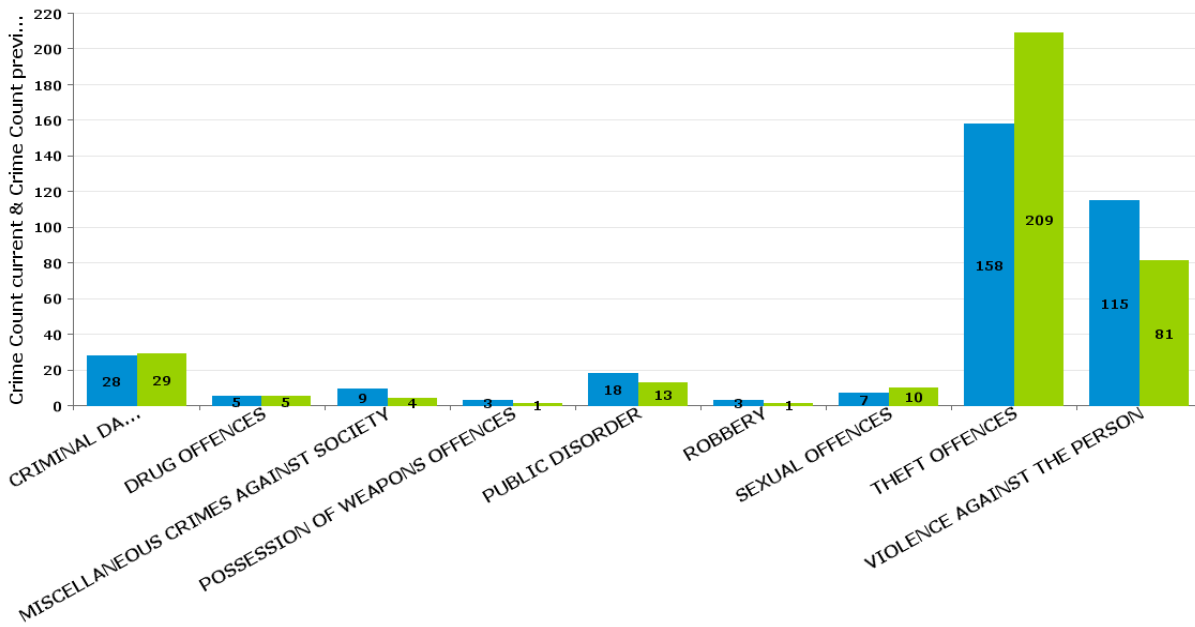
Crime Groups

SLADE

Crime Group	Current 12 Months	Previous 12 Months	+/- Crime	% Change	Number of Resolved Crimes	Resolution Rate (12 Months)
CRIMINAL DAMAGE & ARSON	28	29	-1	-3.45%	3	10.71%
DRUG OFFENCES	5	5	0	0.00%	2	40.00%
MISCELLANEOUS CRIMES AGAINST SOCIETY	9	4	5	125.00%	1	11.11%
POSSESSION OF WEAPONS OFFENCES	3	1	2	200.00%	0	0.00%
PUBLIC DISORDER	18	13	5	38.46%	9	50.00%
ROBBERY	3	1	2	200.00%	0	0.00%
SEXUAL OFFENCES	7	10	-3	-30.00%	1	14.29%
THEFT OFFENCES	158	209	-51	-24.40%	4	2.53%
VIOLENCE AGAINST THE PERSON	115	81	34	41.98%	8	6.96%
Sum:	346	353	-7	-1.98%	28	8.09%

Crime

■ Crime Count current ■ Crime Count previous



Crime Groups

WELLAND

Crime Group	Current 12 Months	Previous 12 Months	+/- Crime	% Change	Number of Resolved Crimes	Resolution Rate (12 Months)
CRIMINAL DAMAGE & ARSON	28	30	-2	-6.67%	11	39.29%
DRUG OFFENCES	5	4	1	25.00%	3	60.00%
MISCELLANEOUS CRIMES AGAINST SOCIETY	8	1	7	700.00%	0	0.00%
POSSESSION OF WEAPONS OFFENCES	1	2	-1	-50.00%	0	0.00%
PUBLIC DISORDER	15	5	10	200.00%	1	6.67%
ROBBERY	0	1	-1	-100.00%	0	#DIV/0
SEXUAL OFFENCES	2	4	-2	-50.00%	0	0.00%
THEFT OFFENCES	101	101	0	0.00%	2	1.98%
VIOLENCE AGAINST THE PERSON	85	68	17	25.00%	26	30.59%
Sum:	245	216	29	13.43%	43	17.55%

Crime

■ Crime Count current ■ Crime Count previous

