

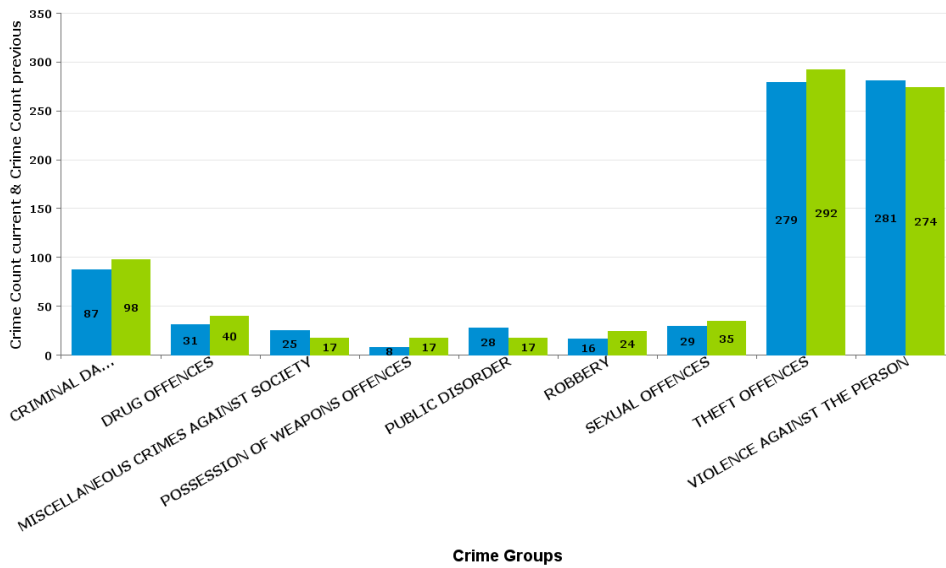
## Kettering Town

### ALL SAINTS

Crime Group	Current 12 Months	Previous 12 Months	+/- Crime	% Change	Number of Resolved Crimes	Resolution Rate (12 Months)
CRIMINAL DAMAGE & ARSON	87	98	-11	-11.22%	6	6.90%
DRUG OFFENCES	31	40	-9	-22.50%	31	100.00%
MISCELLANEOUS CRIMES AGAINST SOCIETY	25	17	8	47.06%	0	0.00%
POSSESSION OF WEAPONS OFFENCES	8	17	-9	-52.94%	8	100.00%
PUBLIC DISORDER	28	17	11	64.71%	6	21.43%
ROBBERY	16	24	-8	-33.33%	4	25.00%
SEXUAL OFFENCES	29	35	-6	-17.14%	3	10.34%
THEFT OFFENCES	279	292	-13	-4.45%	16	5.73%
VIOLENCE AGAINST THE PERSON	281	274	7	2.55%	57	20.28%
<b>Sum:</b>	<b>784</b>	<b>814</b>	<b>-30</b>	<b>-3.69%</b>	<b>131</b>	<b>16.71%</b>

### Crime

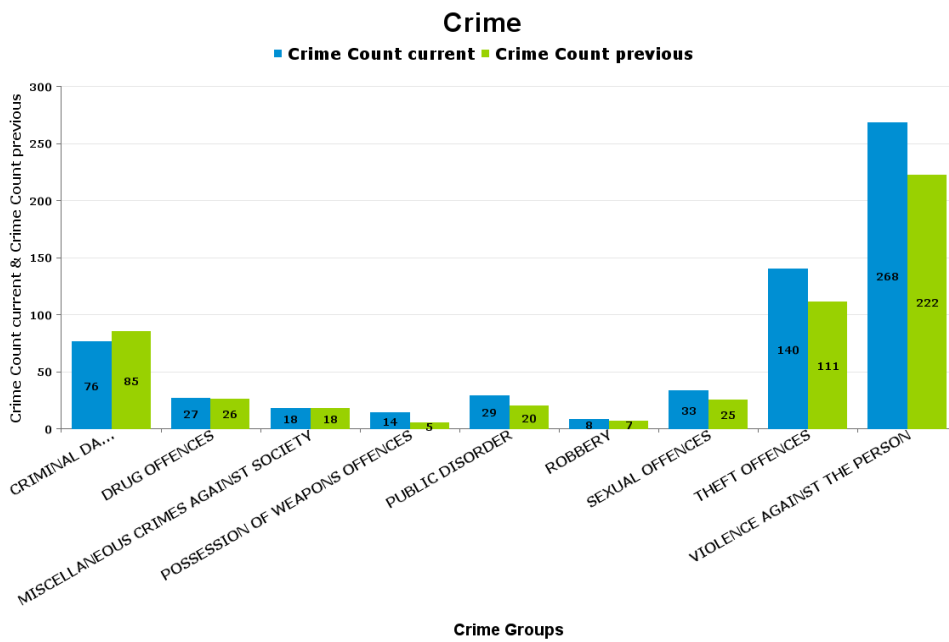
■ Crime Count current ■ Crime Count previous



Crime Groups

AVONDALE GRANGE

Crime Group	Current 12 Months	Previous 12 Months	+/- Crime	% Change	Number of Resolved Crimes	Resolution Rate (12 Months)
CRIMINAL DAMAGE & ARSON	76	85	-9	-10.59%	11	14.47%
DRUG OFFENCES	27	26	1	3.85%	17	62.96%
MISCELLANEOUS CRIMES AGAINST SOCIETY	18	18	0	0.00%	1	5.56%
POSSESSION OF WEAPONS OFFENCES	14	5	9	180.00%	2	14.29%
PUBLIC DISORDER	29	20	9	45.00%	1	3.45%
ROBBERY	8	7	1	14.29%	1	12.50%
SEXUAL OFFENCES	33	25	8	32.00%	0	0.00%
THEFT OFFENCES	140	111	29	26.13%	12	8.57%
VIOLENCE AGAINST THE PERSON	268	222	46	20.72%	34	12.69%
<b>Sum:</b>	<b>613</b>	<b>519</b>	<b>94</b>	<b>18.11%</b>	<b>79</b>	<b>12.89%</b>

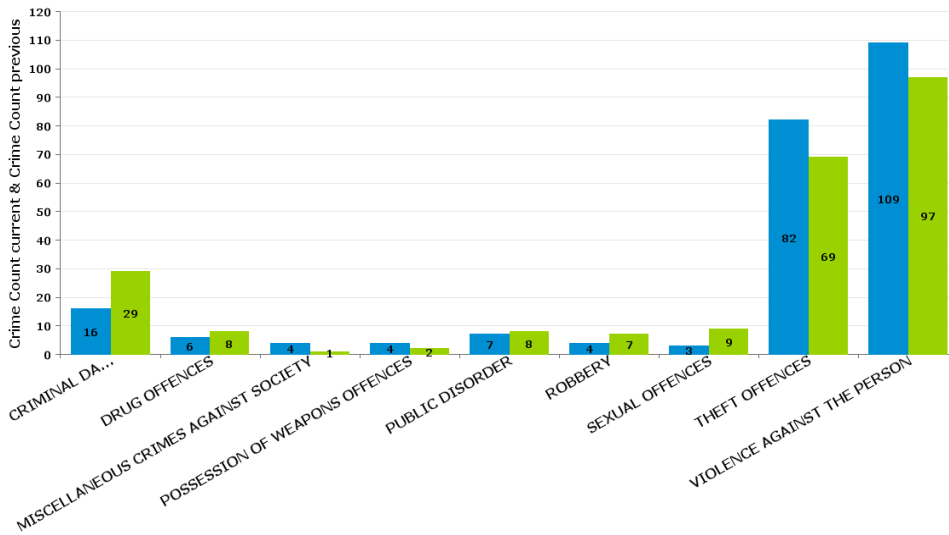


BRAMBLESIDE

Crime Group	Current 12 Months	Previous 12 Months	+/- Crime	% Change	Number of Resolved Crimes	Resolution Rate (12 Months)
CRIMINAL DAMAGE & ARSON	16	29	-13	-44.83%	3	18.75%
DRUG OFFENCES	6	8	-2	-25.00%	7	116.67%
MISCELLANEOUS CRIMES AGAINST SOCIETY	4	1	3	300.00%	0	0.00%
POSSESSION OF WEAPONS OFFENCES	4	2	2	100.00%	1	25.00%
PUBLIC DISORDER	7	8	-1	-12.50%	3	42.86%
ROBBERY	4	7	-3	-42.86%	0	0.00%
SEXUAL OFFENCES	3	9	-6	-66.67%	1	33.33%
THEFT OFFENCES	82	69	13	18.84%	0	0.00%
VIOLENCE AGAINST THE PERSON	109	97	12	12.37%	10	9.17%
<b>Sum:</b>	<b>235</b>	<b>230</b>	<b>5</b>	<b>2.17%</b>	<b>25</b>	<b>10.64%</b>

Crime

■ Crime Count current ■ Crime Count previous



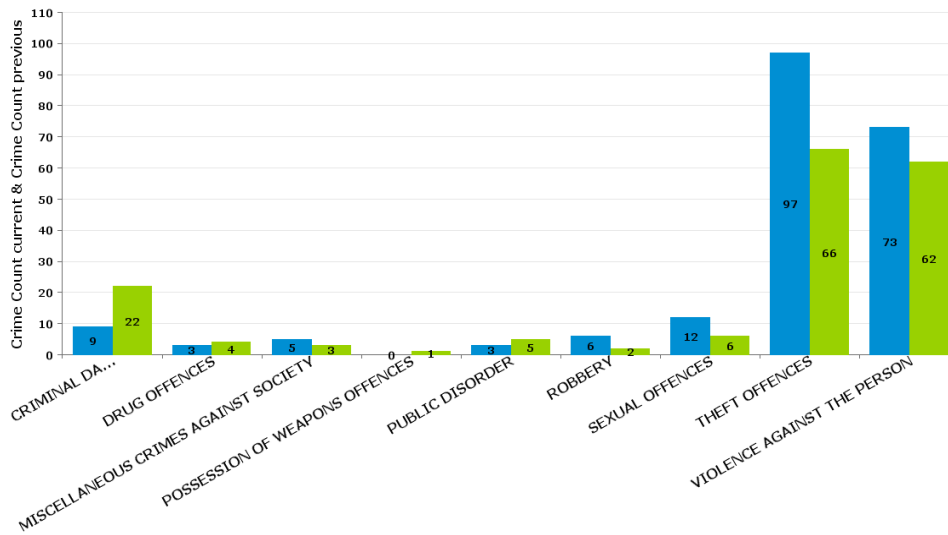
Crime Groups

ISE LODGE

Crime Group	Current 12 Months	Previous 12 Months	+/- Crime	% Change	Number of Resolved Crimes	Resolution Rate (12 Months)
CRIMINAL DAMAGE & ARSON	9	22	-13	-59.09%	5	55.56%
DRUG OFFENCES	3	4	-1	-25.00%	3	100.00%
MISCELLANEOUS CRIMES AGAINST SOCIETY	5	3	2	66.67%	1	20.00%
POSSESSION OF WEAPONS OFFENCES	0	1	-1	-100.00%	2	#DIV/0
PUBLIC DISORDER	3	5	-2	-40.00%	3	100.00%
ROBBERY	6	2	4	200.00%	0	0.00%
SEXUAL OFFENCES	12	6	6	100.00%	0	0.00%
THEFT OFFENCES	97	66	31	46.97%	6	6.19%
VIOLENCE AGAINST THE PERSON	73	62	11	17.74%	17	23.29%
<b>Sum:</b>	<b>208</b>	<b>171</b>	<b>37</b>	<b>21.64%</b>	<b>37</b>	<b>17.79%</b>

Crime

■ Crime Count current ■ Crime Count previous



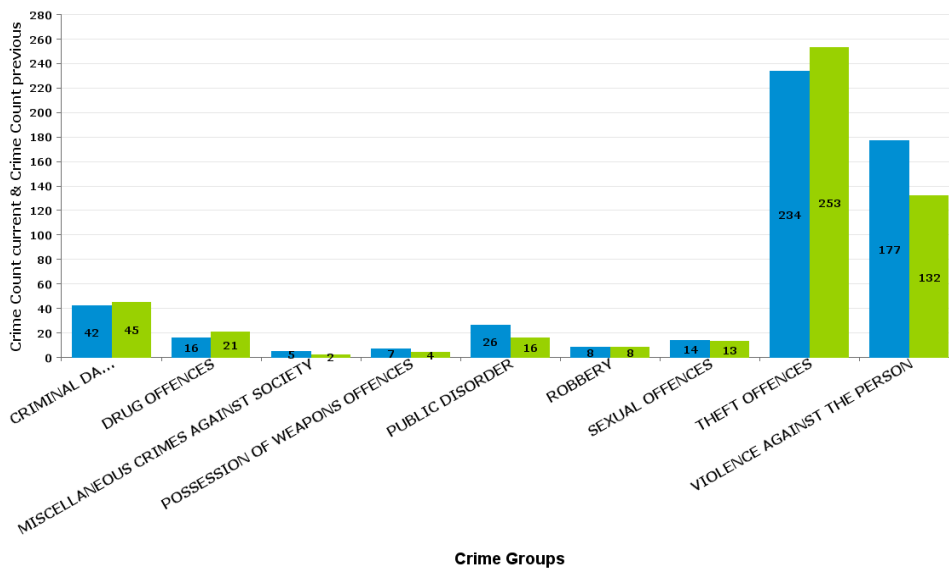
Crime Groups

NORTHFIELD

Crime Group	Current 12 Months	Previous 12 Months	+/- Crime	% Change	Number of Resolved Crimes	Resolution Rate (12 Months)
CRIMINAL DAMAGE & ARSON	42	45	-3	-6.67%	9	21.43%
DRUG OFFENCES	16	21	-5	-23.81%	19	118.75%
MISCELLANEOUS CRIMES AGAINST SOCIETY	5	2	3	150.00%	0	0.00%
POSSESSION OF WEAPONS OFFENCES	7	4	3	75.00%	1	14.29%
PUBLIC DISORDER	26	16	10	62.50%	3	11.54%
ROBBERY	8	8	0	0.00%	2	25.00%
SEXUAL OFFENCES	14	13	1	7.69%	0	0.00%
THEFT OFFENCES	234	253	-19	-7.51%	28	11.97%
VIOLENCE AGAINST THE PERSON	177	132	45	34.09%	30	16.95%
<b>Sum:</b>	<b>529</b>	<b>494</b>	<b>35</b>	<b>7.09%</b>	<b>92</b>	<b>17.39%</b>

Crime

■ Crime Count current ■ Crime Count previous

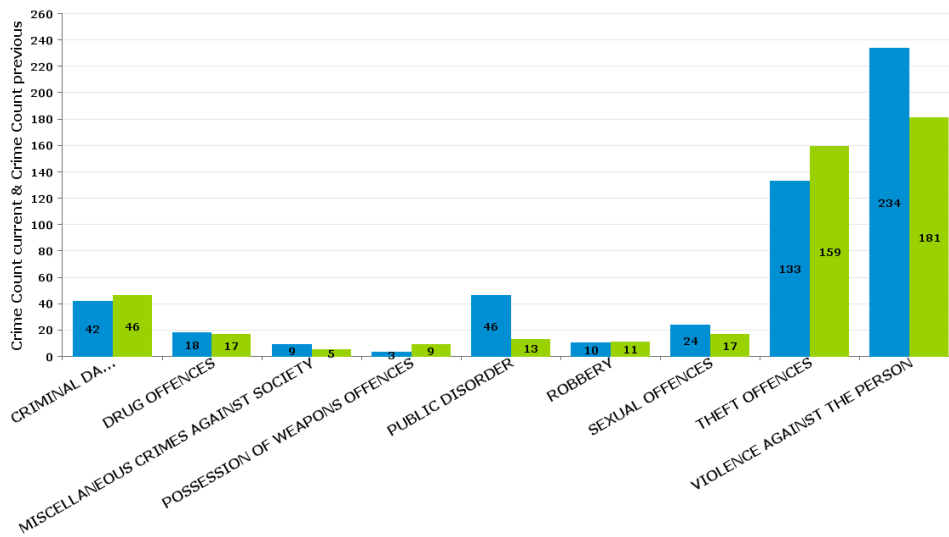


PIPERS HILL

Crime Group	Current 12 Months	Previous 12 Months	+/- Crime	% Change	Number of Resolved Crimes	Resolution Rate (12 Months)
CRIMINAL DAMAGE & ARSON	42	46	-4	-8.70%	7	16.67%
DRUG OFFENCES	18	17	1	5.88%	12	66.67%
MISCELLANEOUS CRIMES AGAINST SOCIETY	9	5	4	80.00%	1	11.11%
POSSESSION OF WEAPONS OFFENCES	3	9	-6	-66.67%	4	133.33%
PUBLIC DISORDER	46	13	33	253.85%	5	10.87%
ROBBERY	10	11	-1	-9.09%	1	10.00%
SEXUAL OFFENCES	24	17	7	41.18%	1	4.17%
THEFT OFFENCES	133	159	-26	-16.35%	9	6.77%
VIOLENCE AGAINST THE PERSON	234	181	53	29.28%	14	5.98%
<b>Sum:</b>	<b>519</b>	<b>458</b>	<b>61</b>	<b>13.32%</b>	<b>54</b>	<b>10.40%</b>

Crime

■ Crime Count current ■ Crime Count previous



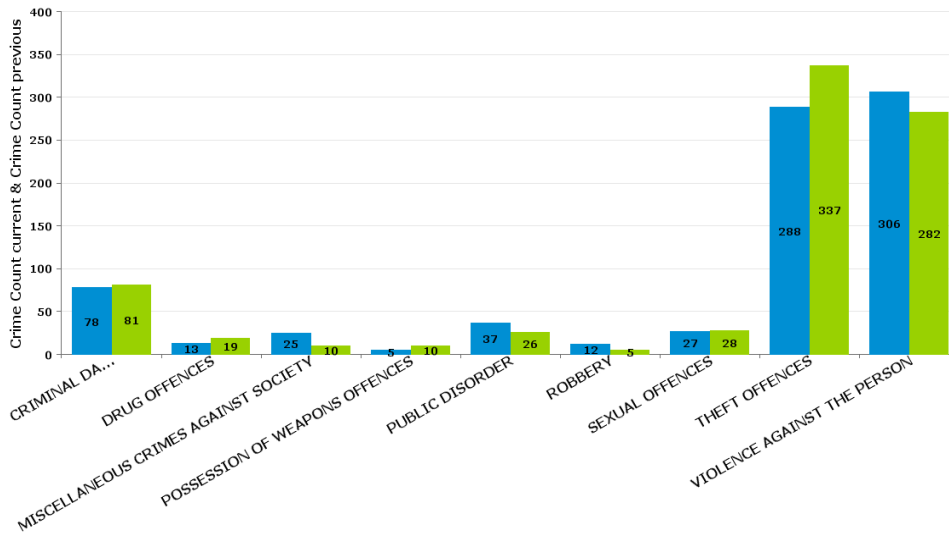
Crime Groups

ST MICHAELS AND WICKSTEED

Crime Group	Current 12 Months	Previous 12 Months	+/- Crime	% Change	Number of Resolved Crimes	Resolution Rate (12 Months)
CRIMINAL DAMAGE & ARSON	78	81	-3	-3.70%	8	10.26%
DRUG OFFENCES	13	19	-6	-31.58%	16	123.08%
MISCELLANEOUS CRIMES AGAINST SOCIETY	25	10	15	150.00%	3	12.00%
POSSESSION OF WEAPONS OFFENCES	5	10	-5	-50.00%	4	80.00%
PUBLIC DISORDER	37	26	11	42.31%	6	16.22%
ROBBERY	12	5	7	140.00%	0	0.00%
SEXUAL OFFENCES	27	28	-1	-3.57%	3	11.11%
THEFT OFFENCES	288	337	-49	-14.54%	19	6.60%
VIOLENCE AGAINST THE PERSON	306	282	24	8.51%	55	17.97%
<b>Sum:</b>	<b>791</b>	<b>798</b>	<b>-7</b>	<b>-0.88%</b>	<b>114</b>	<b>14.41%</b>

Crime

■ Crime Count current ■ Crime Count previous



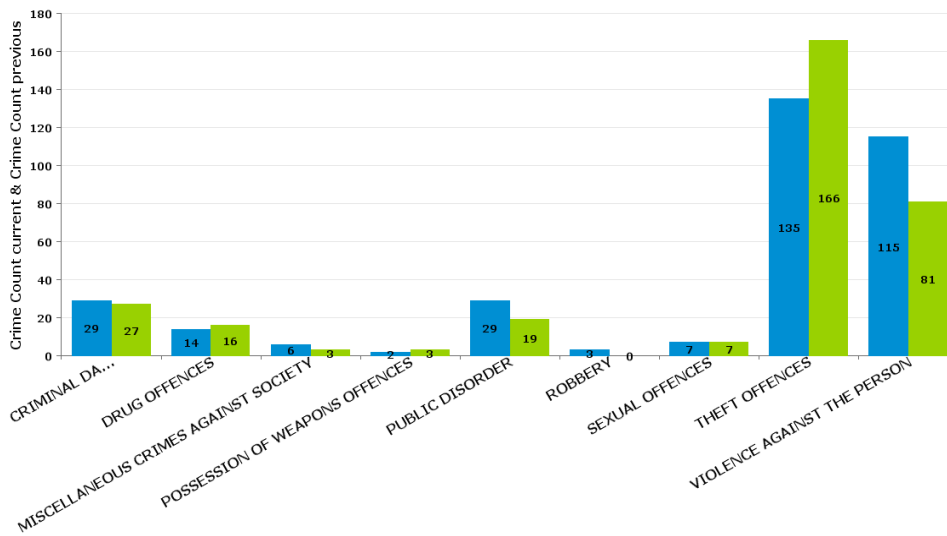
Crime Groups

ST PETERS

Crime Group	Current 12 Months	Previous 12 Months	+/- Crime	% Change	Number of Resolved Crimes	Resolution Rate (12 Months)
CRIMINAL DAMAGE & ARSON	29	27	2	7.41%	6	20.69%
DRUG OFFENCES	14	16	-2	-12.50%	6	42.86%
MISCELLANEOUS CRIMES AGAINST SOCIETY	6	3	3	100.00%	1	16.67%
POSSESSION OF WEAPONS OFFENCES	2	3	-1	-33.33%	1	50.00%
PUBLIC DISORDER	29	19	10	52.63%	5	17.24%
ROBBERY	3	0	3	#DIV/0	0	0.00%
SEXUAL OFFENCES	7	7	0	0.00%	1	14.29%
THEFT OFFENCES	135	166	-31	-18.67%	10	7.41%
VIOLENCE AGAINST THE PERSON	115	81	34	41.98%	16	13.91%
<b>Sum:</b>	<b>340</b>	<b>322</b>	<b>18</b>	<b>5.59%</b>	<b>46</b>	<b>13.53%</b>

Crime

■ Crime Count current ■ Crime Count previous



Crime Groups

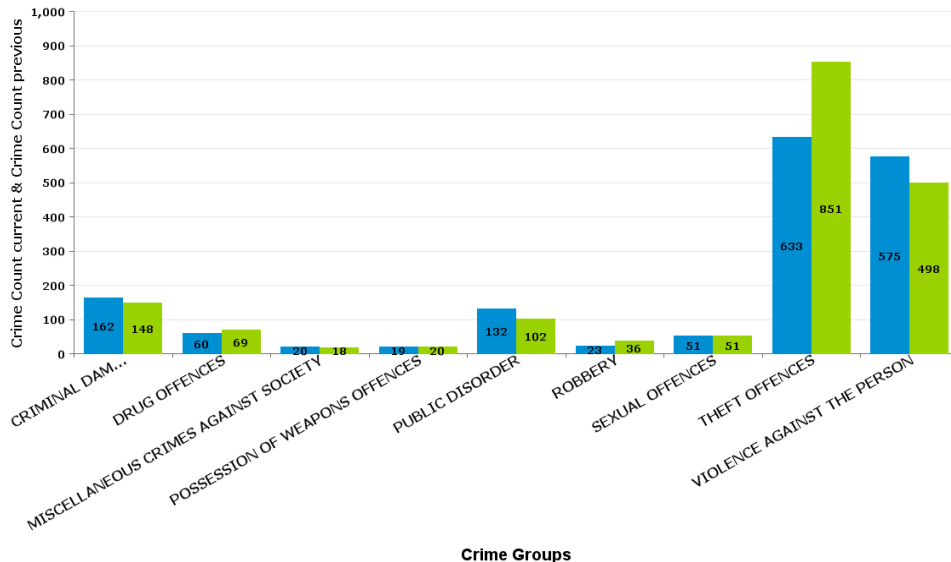


WILLIAM KNIBB

Crime Group	Current 12 Months	Previous 12 Months	+/- Crime	% Change	Number of Resolved Crimes	Resolution Rate (12 Months)
CRIMINAL DAMAGE & ARSON	162	148	14	9.46%	36	22.22%
DRUG OFFENCES	60	69	-9	-13.04%	56	93.33%
MISCELLANEOUS CRIMES AGAINST SOCIETY	20	18	2	11.11%	2	10.00%
POSSESSION OF WEAPONS OFFENCES	19	20	-1	-5.00%	13	68.42%
PUBLIC DISORDER	132	102	30	29.41%	39	29.55%
ROBBERY	23	36	-13	-36.11%	4	17.39%
SEXUAL OFFENCES	51	51	0	0.00%	4	7.84%
THEFT OFFENCES	633	851	-218	-25.62%	147	23.22%
VIOLENCE AGAINST THE PERSON	575	498	77	15.46%	89	15.48%
<b>Sum:</b>	<b>1675</b>	<b>1793</b>	<b>-118</b>	<b>-6.58%</b>	<b>390</b>	<b>23.28%</b>

Crime

■ Crime Count current ■ Crime Count previous



Crime Groups