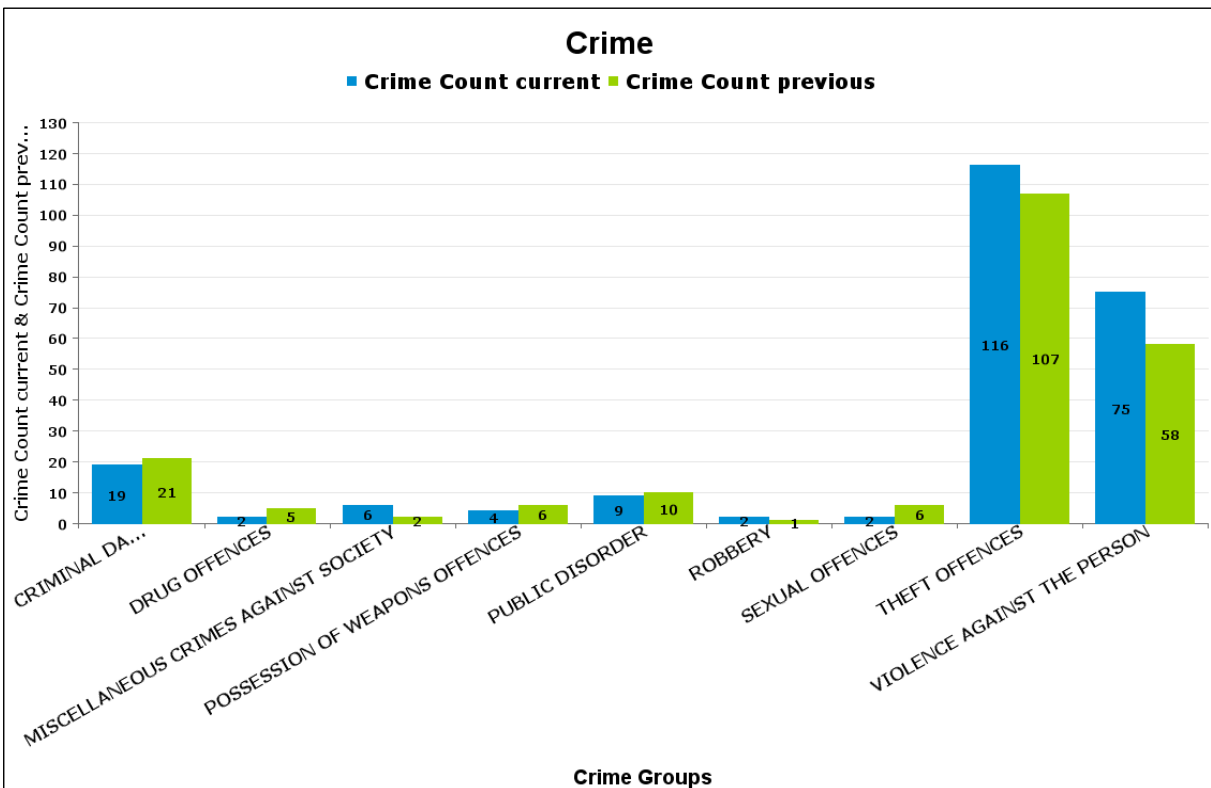


Kettering A6 Towns

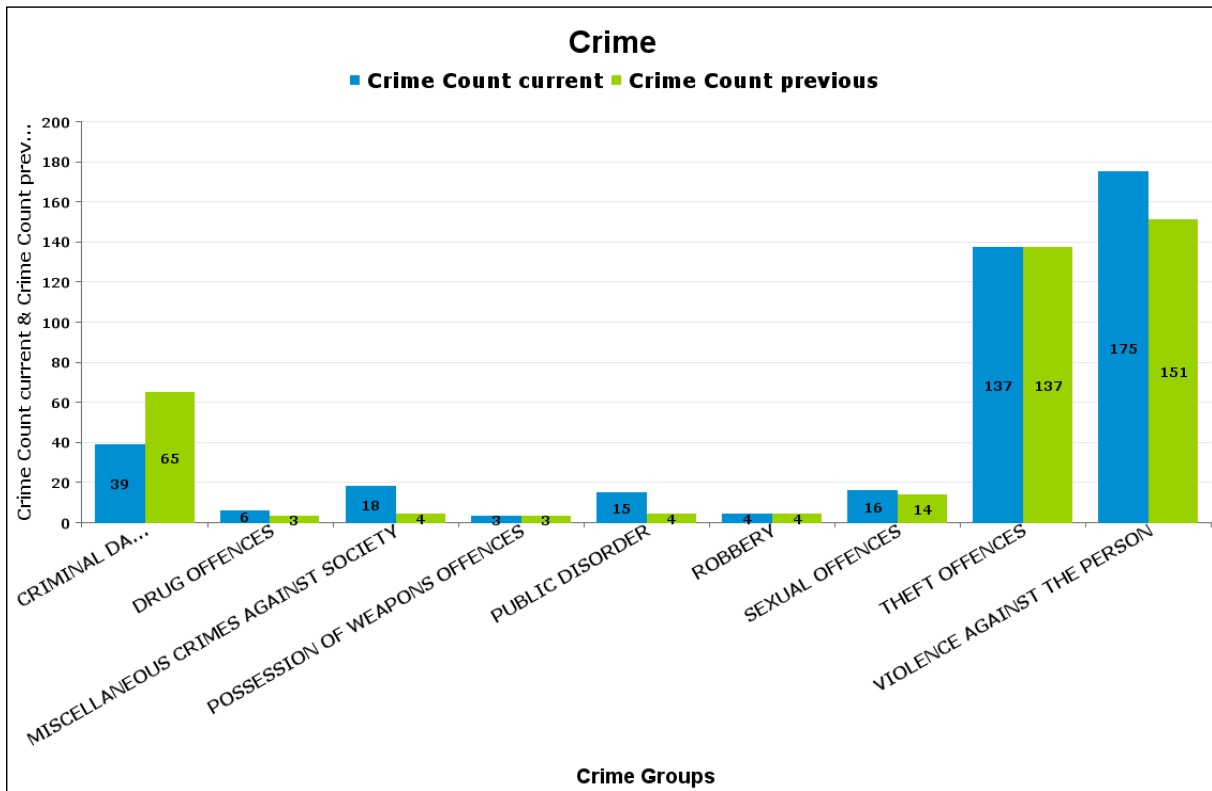
BARTON

Crime Group	Current 12 Months	Previous 12 Months	+/- Crime	% Change	Number of Resolved Crimes	Resolution Rate (12 Months)
CRIMINAL DAMAGE & ARSON	19	21	-2	-9.52%	1	5.26%
DRUG OFFENCES	2	5	-3	-60.00%	3	150.00%
MISCELLANEOUS CRIMES AGAINST SOCIETY	6	2	4	200.00%	0	0.00%
POSSESSION OF WEAPONS OFFENCES	4	6	-2	-33.33%	2	50.00%
PUBLIC DISORDER	9	10	-1	-10.00%	0	0.00%
ROBBERY	2	1	1	100.00%	3	150.00%
SEXUAL OFFENCES	2	6	-4	-66.67%	0	0.00%
THEFT OFFENCES	116	107	9	8.41%	6	5.17%
VIOLENCE AGAINST THE PERSON	75	58	17	29.31%	12	16.00%
Sum:	235	216	19	8.80%	27	11.49%



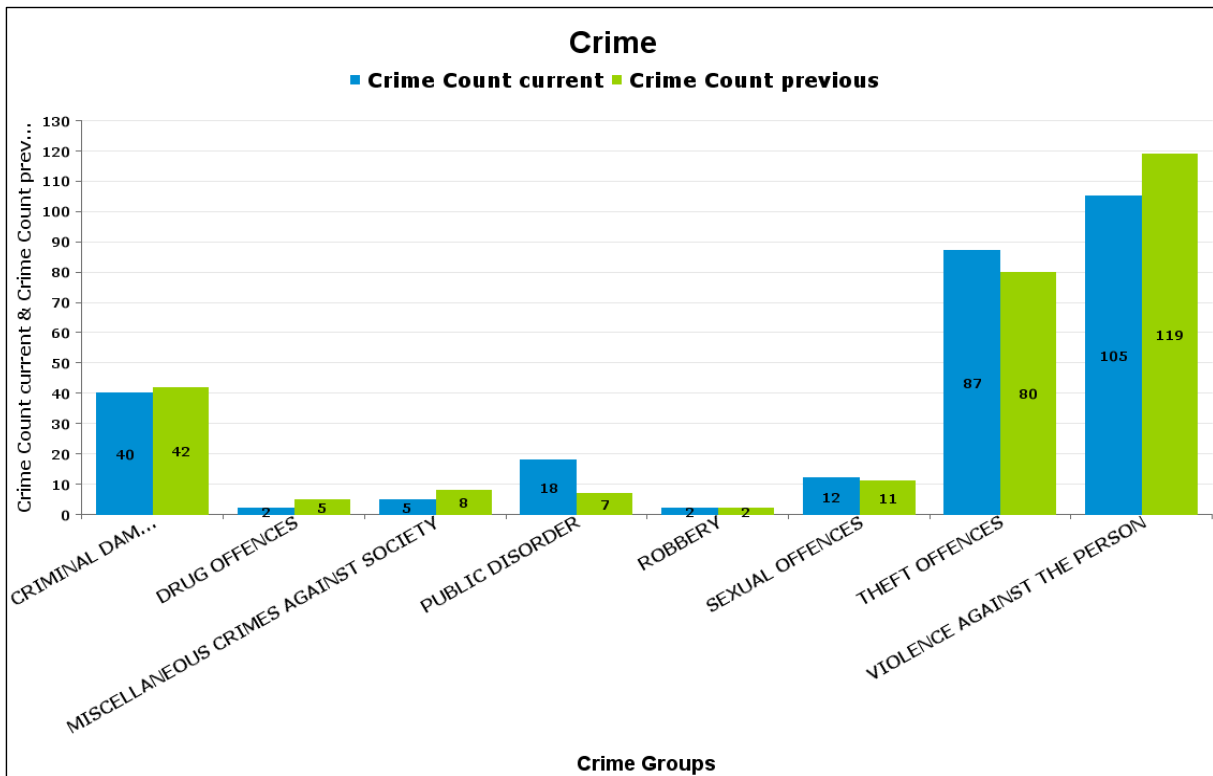
BURTON LATIMER

Crime Group	Current 12 Months	Previous 12 Months	+/- Crime	% Change	Number of Resolved Crimes	Resolution Rate (12 Months)
CRIMINAL DAMAGE & ARSON	39	65	-26	-40.00%	8	20.51%
DRUG OFFENCES	6	3	3	100.00%	4	66.67%
MISCELLANEOUS CRIMES AGAINST SOCIETY	18	4	14	350.00%	1	5.56%
POSSESSION OF WEAPONS OFFENCES	3	3	0	0.00%	0	0.00%
PUBLIC DISORDER	15	4	11	275.00%	1	6.67%
ROBBERY	4	4	0	0.00%	1	25.00%
SEXUAL OFFENCES	16	14	2	14.29%	1	6.25%
THEFT OFFENCES	137	137	0	0.00%	12	8.76%
VIOLENCE AGAINST THE PERSON	175	151	24	15.89%	26	14.86%
Sum:	413	385	28	7.27%	54	13.08%



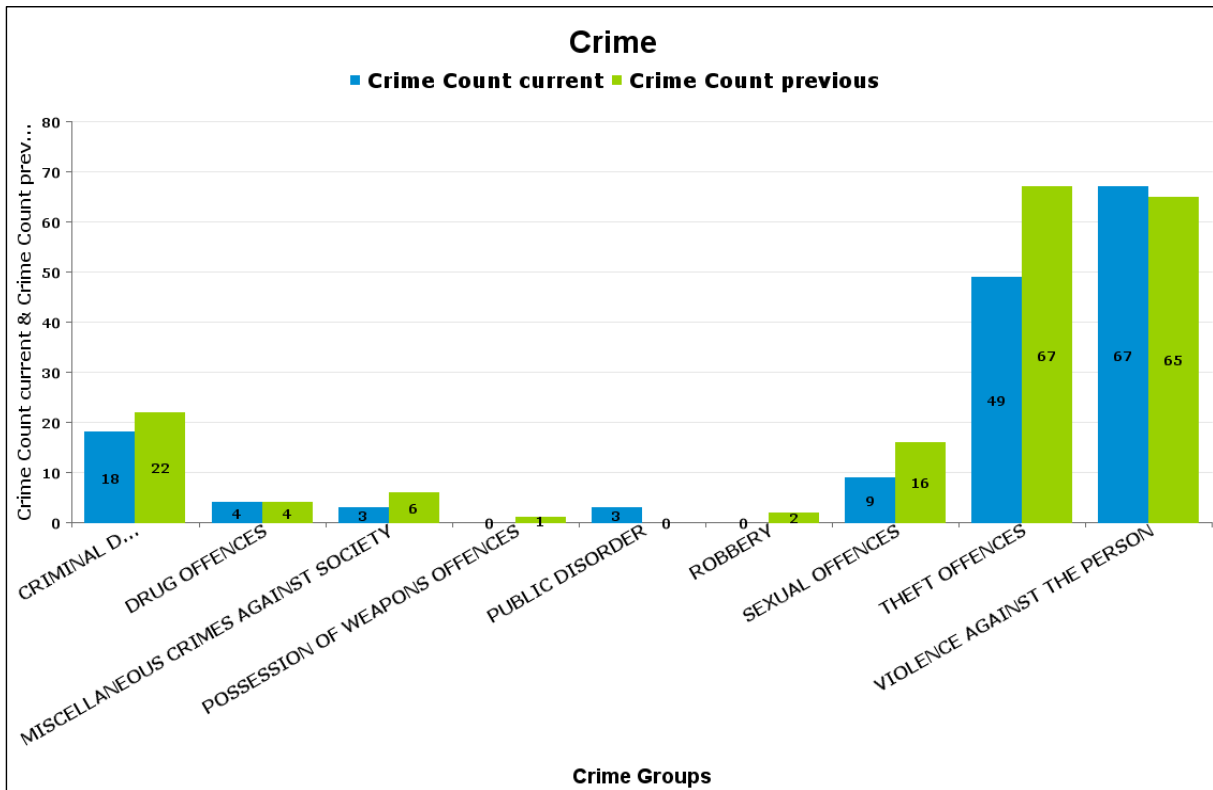
DESBOROUGH LOATLAND

Crime Group	Current 12 Months	Previous 12 Months	+/- Crime	% Change	Number of Resolved Crimes	Resolution Rate (12 Months)
CRIMINAL DAMAGE & ARSON	40	42	-2	-4.76%	3	7.50%
DRUG OFFENCES	2	5	-3	-60.00%	4	200.00%
MISCELLANEOUS CRIMES AGAINST SOCIETY	5	8	-3	-37.50%	1	20.00%
PUBLIC DISORDER	18	7	11	157.14%	4	22.22%
ROBBERY	2	2	0	0.00%	0	0.00%
SEXUAL OFFENCES	12	11	1	9.09%	1	8.33%
THEFT OFFENCES	87	80	7	8.75%	0	0.00%
VIOLENCE AGAINST THE PERSON	105	119	-14	-11.76%	29	27.62%
Sum:	271	274	-3	-1.09%	42	15.50%



DESBOROUGH ST GILES

Crime Group	Current 12 Months	Previous 12 Months	+/- Crime	% Change	Number of Resolved Crimes	Resolution Rate (12 Months)
CRIMINAL DAMAGE & ARSON	18	22	-4	-18.18%	1	5.56%
DRUG OFFENCES	4	4	0	0.00%	3	75.00%
MISCELLANEOUS CRIMES AGAINST SOCIETY	3	6	-3	-50.00%	1	33.33%
POSSESSION OF WEAPONS OFFENCES	0	1	-1	-100.00%	0	#DIV/0
PUBLIC DISORDER	3	0	3	#DIV/0	0	0.00%
ROBBERY	0	2	-2	-100.00%	1	#DIV/0
SEXUAL OFFENCES	9	16	-7	-43.75%	5	55.56%
THEFT OFFENCES	49	67	-18	-26.87%	0	0.00%
VIOLENCE AGAINST THE PERSON	67	65	2	3.08%	9	13.43%
Sum:	153	183	-30	-16.39%	20	13.07%



ROTHWELL

Crime Group	Current 12 Months	Previous 12 Months	+/- Crime	% Change	Number of Resolved Crimes	Resolution Rate (12 Months)
CRIMINAL DAMAGE & ARSON	73	66	7	10.61%	10	13.70%
DRUG OFFENCES	8	10	-2	-20.00%	7	87.50%
MISCELLANEOUS CRIMES AGAINST SOCIETY	19	5	14	280.00%	1	5.26%
POSSESSION OF WEAPONS OFFENCES	10	5	5	100.00%	0	0.00%
PUBLIC DISORDER	18	18	0	0.00%	4	22.22%
ROBBERY	5	8	-3	-37.50%	0	0.00%
SEXUAL OFFENCES	30	24	6	25.00%	3	10.00%
THEFT OFFENCES	201	249	-48	-19.28%	10	4.98%
VIOLENCE AGAINST THE PERSON	207	154	53	34.42%	24	11.59%
Sum:	571	539	32	5.94%	59	10.33%

