

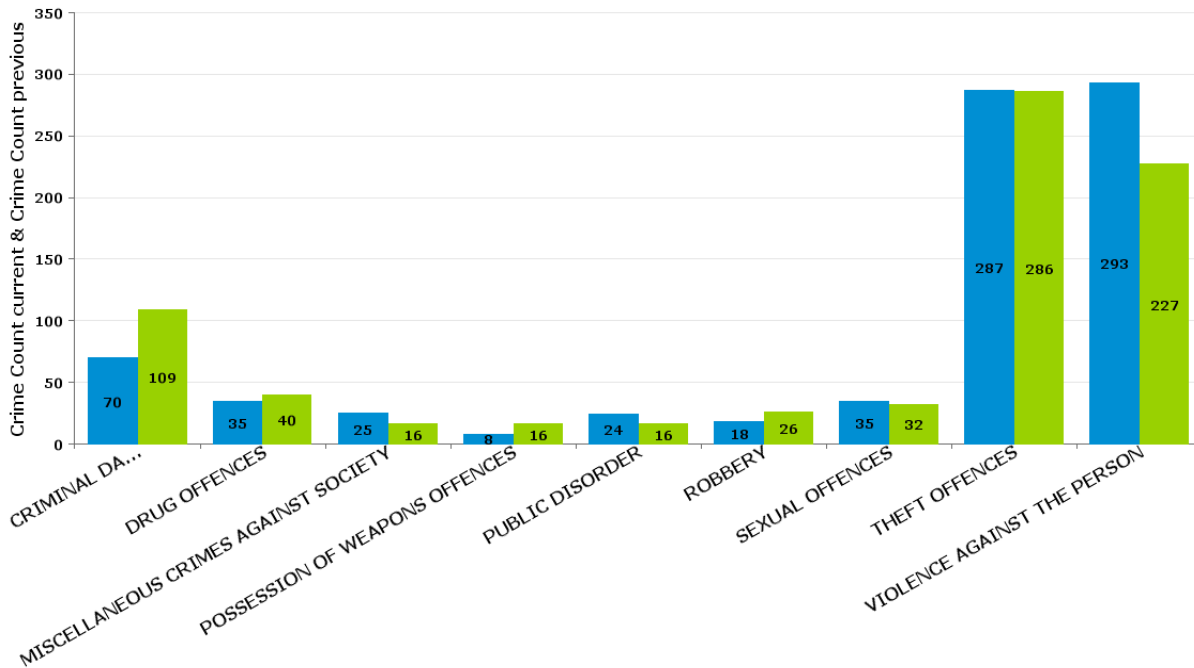
# Kettering Town

## ALL SAINTS

Crime Group	Current 12 Months	Previous 12 Months	+/- Crime	% Change	Number of Resolved Crimes	Resolution Rate (12 Months)
CRIMINAL DAMAGE & ARSON	70	109	-39	-35.78%	12	17.14%
DRUG OFFENCES	35	40	-5	-12.50%	29	82.86%
MISCELLANEOUS CRIMES AGAINST SOCIETY	25	16	9	56.25%	1	4.00%
POSSESSION OF WEAPONS OFFENCES	8	16	-8	-50.00%	9	112.50%
PUBLIC DISORDER	24	16	8	50.00%	5	20.83%
ROBBERY	18	26	-8	-30.77%	4	22.22%
SEXUAL OFFENCES	35	32	3	9.38%	3	8.57%
THEFT OFFENCES	287	286	1	0.35%	25	8.71%
VIOLENCE AGAINST THE PERSON	293	227	66	29.07%	41	13.99%
<b>Sum:</b>	<b>795</b>	<b>768</b>	<b>27</b>	<b>3.52%</b>	<b>129</b>	<b>16.23%</b>

### Crime

■ Crime Count current ■ Crime Count previous



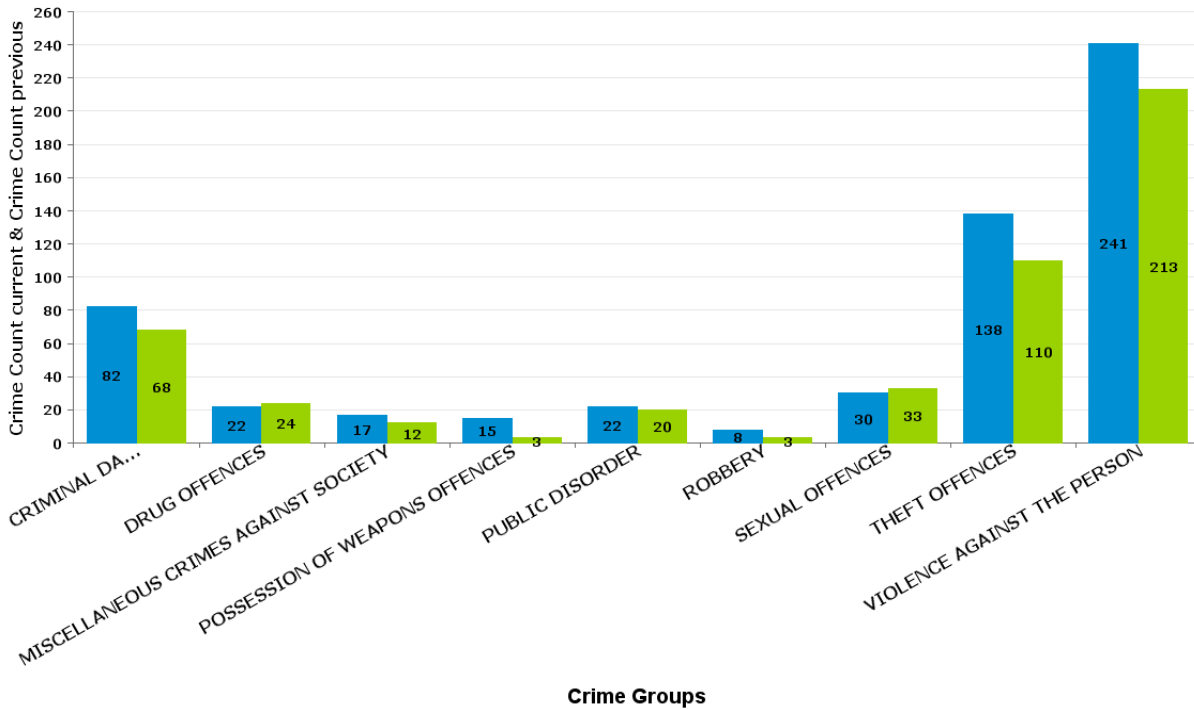
Crime Groups

## AVONDALE GRANGE

Crime Group	Current 12 Months	Previous 12 Months	+/- Crime	% Change	Number of Resolved Crimes	Resolution Rate (12 Months)
CRIMINAL DAMAGE & ARSON	82	68	14	20.59%	8	9.76%
DRUG OFFENCES	22	24	-2	-8.33%	15	68.18%
MISCELLANEOUS CRIMES AGAINST SOCIETY	17	12	5	41.67%	2	11.76%
POSSESSION OF WEAPONS OFFENCES	15	3	12	400.00%	2	13.33%
PUBLIC DISORDER	22	20	2	10.00%	4	18.18%
ROBBERY	8	3	5	166.67%	0	0.00%
SEXUAL OFFENCES	30	33	-3	-9.09%	2	6.67%
THEFT OFFENCES	138	110	28	25.45%	13	9.42%
VIOLENCE AGAINST THE PERSON	241	213	28	13.15%	31	12.86%
<b>Sum:</b>	<b>575</b>	<b>486</b>	<b>89</b>	<b>18.31%</b>	<b>77</b>	<b>13.39%</b>

### Crime

■ Crime Count current ■ Crime Count previous

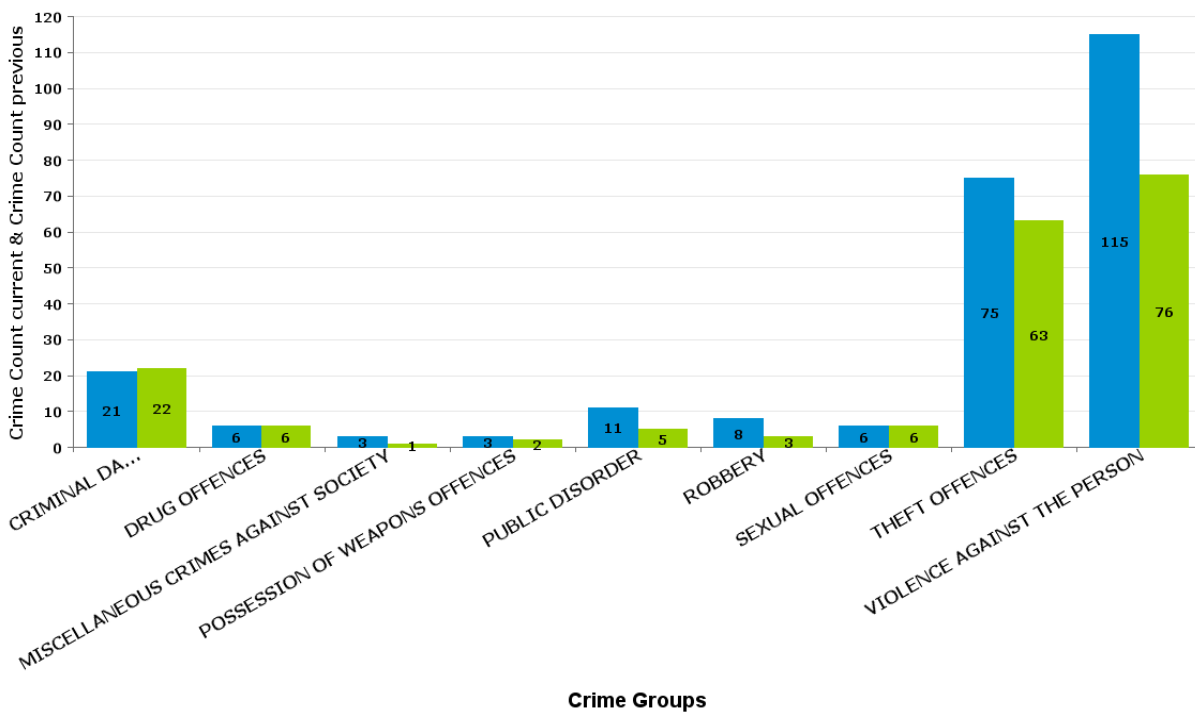


## BRAMBLESIDE

Crime Group	Current 12 Months	Previous 12 Months	+/- Crime	% Change	Number of Resolved Crimes	Resolution Rate (12 Months)
CRIMINAL DAMAGE & ARSON	21	22	-1	-4.55%	1	4.76%
DRUG OFFENCES	6	6	0	0.00%	4	66.67%
MISCELLANEOUS CRIMES AGAINST SOCIETY	3	1	2	200.00%	0	0.00%
POSSESSION OF WEAPONS OFFENCES	3	2	1	50.00%	1	33.33%
PUBLIC DISORDER	11	5	6	120.00%	1	9.09%
ROBBERY	8	3	5	166.67%	1	12.50%
SEXUAL OFFENCES	6	6	0	0.00%	1	16.67%
THEFT OFFENCES	75	63	12	19.05%	0	0.00%
VIOLENCE AGAINST THE PERSON	115	76	39	51.32%	13	11.30%
<b>Sum:</b>	<b>248</b>	<b>184</b>	<b>64</b>	<b>34.78%</b>	<b>22</b>	<b>8.87%</b>

### Crime

■ Crime Count current ■ Crime Count previous

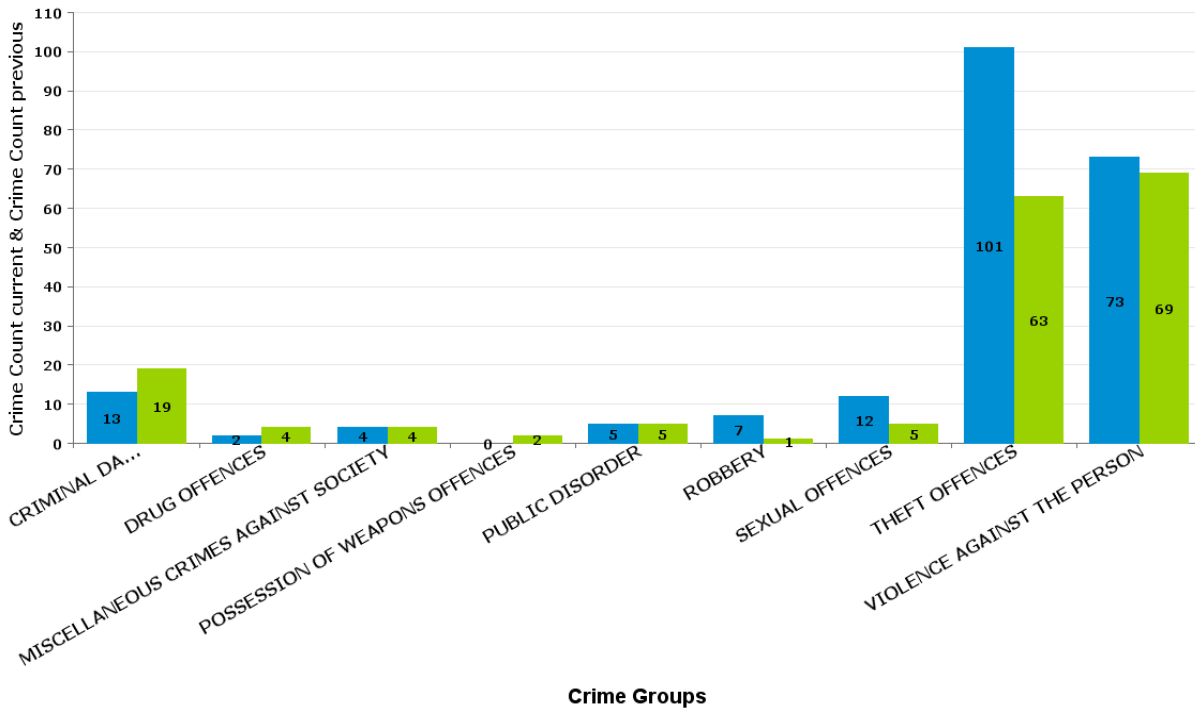


ISE LODGE

Crime Group	Current 12 Months	Previous 12 Months	+/- Crime	% Change	Number of Resolved Crimes	Resolution Rate (12 Months)
CRIMINAL DAMAGE & ARSON	13	19	-6	-31.58%	5	38.46%
DRUG OFFENCES	2	4	-2	-50.00%	2	100.00%
MISCELLANEOUS CRIMES AGAINST SOCIETY	4	4	0	0.00%	2	50.00%
POSSESSION OF WEAPONS OFFENCES	0	2	-2	-100.00%	1	#DIV/0
PUBLIC DISORDER	5	5	0	0.00%	3	60.00%
ROBBERY	7	1	6	600.00%	0	0.00%
SEXUAL OFFENCES	12	5	7	140.00%	0	0.00%
THEFT OFFENCES	101	63	38	60.32%	13	12.87%
VIOLENCE AGAINST THE PERSON	73	69	4	5.80%	22	30.14%
<b>Sum:</b>	<b>217</b>	<b>172</b>	<b>45</b>	<b>26.16%</b>	<b>48</b>	<b>22.12%</b>

Crime

■ Crime Count current ■ Crime Count previous

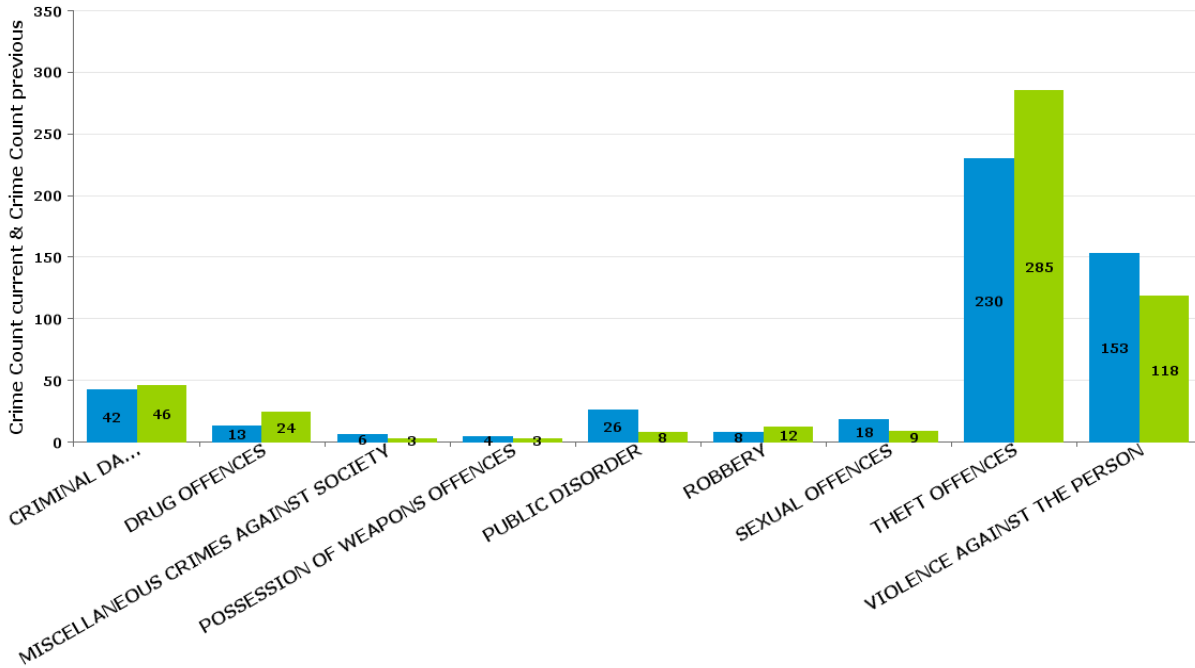


## NORTHFIELD

Crime Group	Current 12 Months	Previous 12 Months	+/- Crime	% Change	Number of Resolved Crimes	Resolution Rate (12 Months)
CRIMINAL DAMAGE & ARSON	42	46	-4	-8.70%	7	16.67%
DRUG OFFENCES	13	24	-11	-45.83%	16	123.08%
MISCELLANEOUS CRIMES AGAINST SOCIETY	6	3	3	100.00%	1	16.67%
POSSESSION OF WEAPONS OFFENCES	4	3	1	33.33%	2	50.00%
PUBLIC DISORDER	26	8	18	225.00%	1	3.85%
ROBBERY	8	12	-4	-33.33%	4	50.00%
SEXUAL OFFENCES	18	9	9	100.00%	0	0.00%
THEFT OFFENCES	230	285	-55	-19.30%	41	17.83%
VIOLENCE AGAINST THE PERSON	153	118	35	29.66%	38	24.84%
<b>Sum:</b>	<b>500</b>	<b>508</b>	<b>-8</b>	<b>-1.57%</b>	<b>110</b>	<b>22.00%</b>

### Crime

■ Crime Count current ■ Crime Count previous



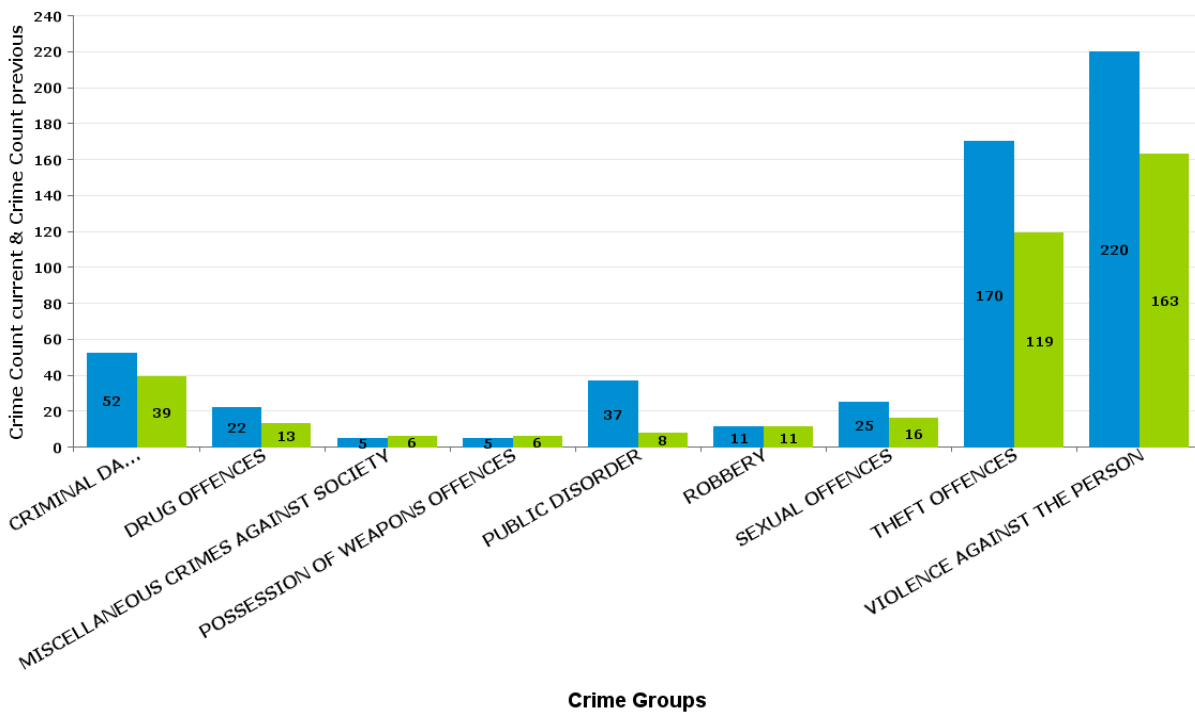
Crime Groups

PIPERS HILL

Crime Group	Current 12 Months	Previous 12 Months	+/- Crime	% Change	Number of Resolved Crimes	Resolution Rate (12 Months)
CRIMINAL DAMAGE & ARSON	52	39	13	33.33%	6	11.54%
DRUG OFFENCES	22	13	9	69.23%	8	36.36%
MISCELLANEOUS CRIMES AGAINST SOCIETY	5	6	-1	-16.67%	2	40.00%
POSSESSION OF WEAPONS OFFENCES	5	6	-1	-16.67%	2	40.00%
PUBLIC DISORDER	37	8	29	362.50%	3	8.11%
ROBBERY	11	11	0	0.00%	4	36.36%
SEXUAL OFFENCES	25	16	9	56.25%	1	4.00%
THEFT OFFENCES	170	119	51	42.86%	11	6.47%
VIOLENCE AGAINST THE PERSON	220	163	57	34.97%	17	7.73%
<b>Sum:</b>	<b>547</b>	<b>381</b>	<b>166</b>	<b>43.57%</b>	<b>54</b>	<b>9.87%</b>

Crime

■ Crime Count current ■ Crime Count previous

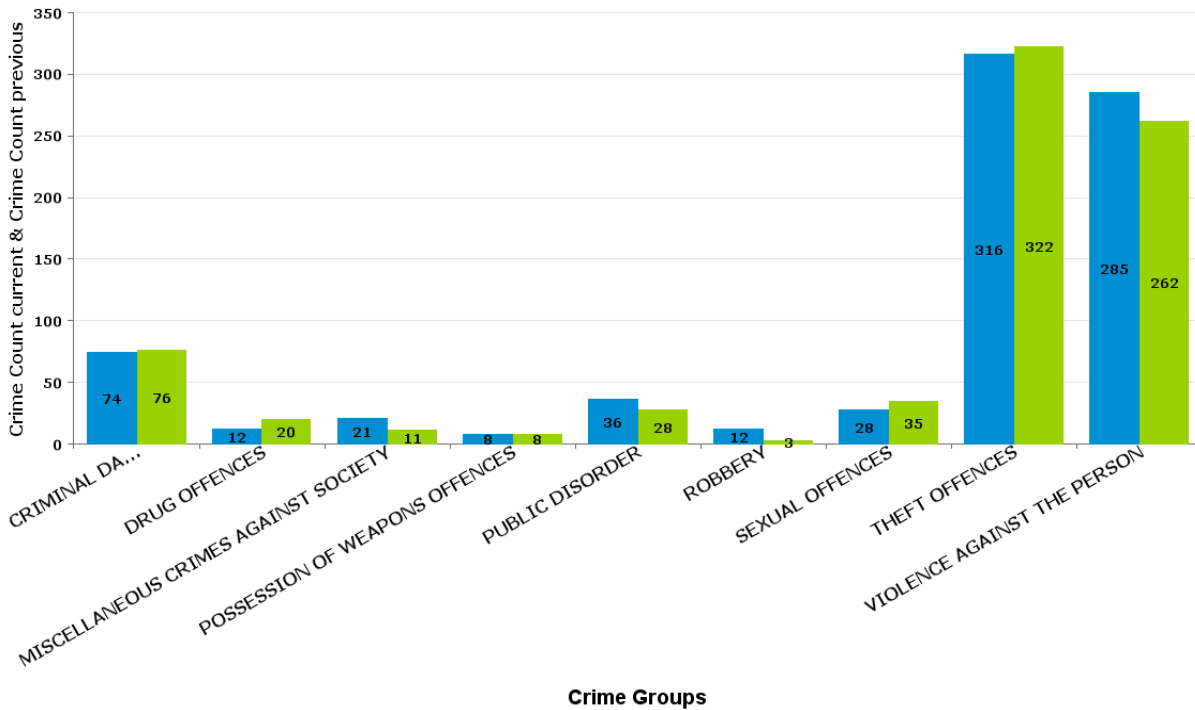


ST MICHAELS AND WICKSTEED

Crime Group	Current 12 Months	Previous 12 Months	+/- Crime	% Change	Number of Resolved Crimes	Resolution Rate (12 Months)
CRIMINAL DAMAGE & ARSON	74	76	-2	-2.63%	7	9.46%
DRUG OFFENCES	12	20	-8	-40.00%	15	125.00%
MISCELLANEOUS CRIMES AGAINST SOCIETY	21	11	10	90.91%	5	23.81%
POSSESSION OF WEAPONS OFFENCES	8	8	0	0.00%	1	12.50%
PUBLIC DISORDER	36	28	8	28.57%	7	19.44%
ROBBERY	12	3	9	300.00%	0	0.00%
SEXUAL OFFENCES	28	35	-7	-20.00%	4	14.29%
THEFT OFFENCES	316	322	-6	-1.86%	23	7.28%
VIOLENCE AGAINST THE PERSON	285	262	23	8.78%	49	17.19%
<b>Sum:</b>	<b>792</b>	<b>765</b>	<b>27</b>	<b>3.53%</b>	<b>111</b>	<b>14.02%</b>

Crime

■ Crime Count current ■ Crime Count previous

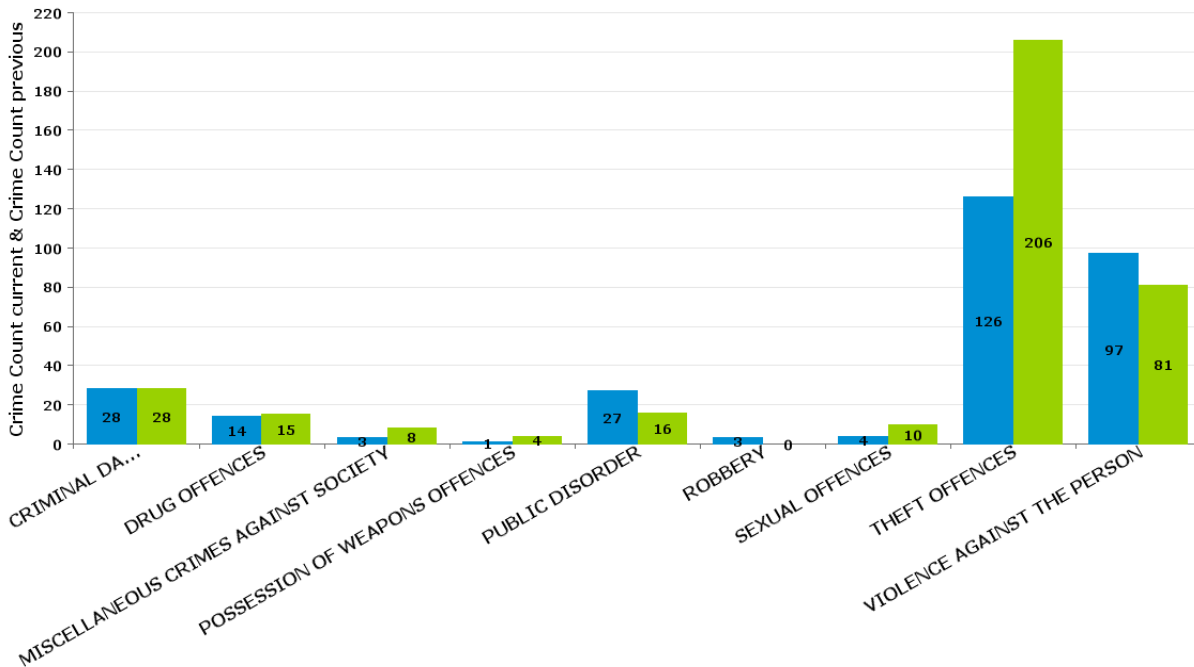


## ST PETERS

Crime Group	Current 12 Months	Previous 12 Months	+/- Crime	% Change	Number of Resolved Crimes	Resolution Rate (12 Months)
CRIMINAL DAMAGE & ARSON	28	28	0	0.00%	6	21.43%
DRUG OFFENCES	14	15	-1	-6.67%	5	35.71%
MISCELLANEOUS CRIMES AGAINST SOCIETY	3	8	-5	-62.50%	1	33.33%
POSSESSION OF WEAPONS OFFENCES	1	4	-3	-75.00%	1	100.00%
PUBLIC DISORDER	27	16	11	68.75%	6	22.22%
ROBBERY	3	0	3	#DIV/0	0	0.00%
SEXUAL OFFENCES	4	10	-6	-60.00%	2	50.00%
THEFT OFFENCES	126	206	-80	-38.83%	15	11.90%
VIOLENCE AGAINST THE PERSON	97	81	16	19.75%	24	24.74%
<b>Sum:</b>	<b>303</b>	<b>368</b>	<b>-65</b>	<b>-17.66%</b>	<b>60</b>	<b>19.80%</b>

### Crime

■ Crime Count current ■ Crime Count previous



Crime Groups



WILLIAM KNIBB

Crime Group	Current 12 Months	Previous 12 Months	+/- Crime	% Change	Number of Resolved Crimes	Resolution Rate (12 Months)
CRIMINAL DAMAGE & ARSON	143	136	7	5.15%	35	24.48%
DRUG OFFENCES	64	59	5	8.47%	52	81.25%
MISCELLANEOUS CRIMES AGAINST SOCIETY	18	21	-3	-14.29%	4	22.22%
POSSESSION OF WEAPONS OFFENCES	20	21	-1	-4.76%	15	75.00%
PUBLIC DISORDER	110	95	15	15.79%	34	30.91%
ROBBERY	32	31	1	3.23%	7	21.88%
SEXUAL OFFENCES	45	55	-10	-18.18%	4	8.89%
THEFT OFFENCES	658	826	-168	-20.34%	149	22.64%
VIOLENCE AGAINST THE PERSON	571	481	90	18.71%	101	17.69%
<b>Sum:</b>	<b>1661</b>	<b>1725</b>	<b>-64</b>	<b>-3.71%</b>	<b>401</b>	<b>24.14%</b>

Crime

■ Crime Count current ■ Crime Count previous

