

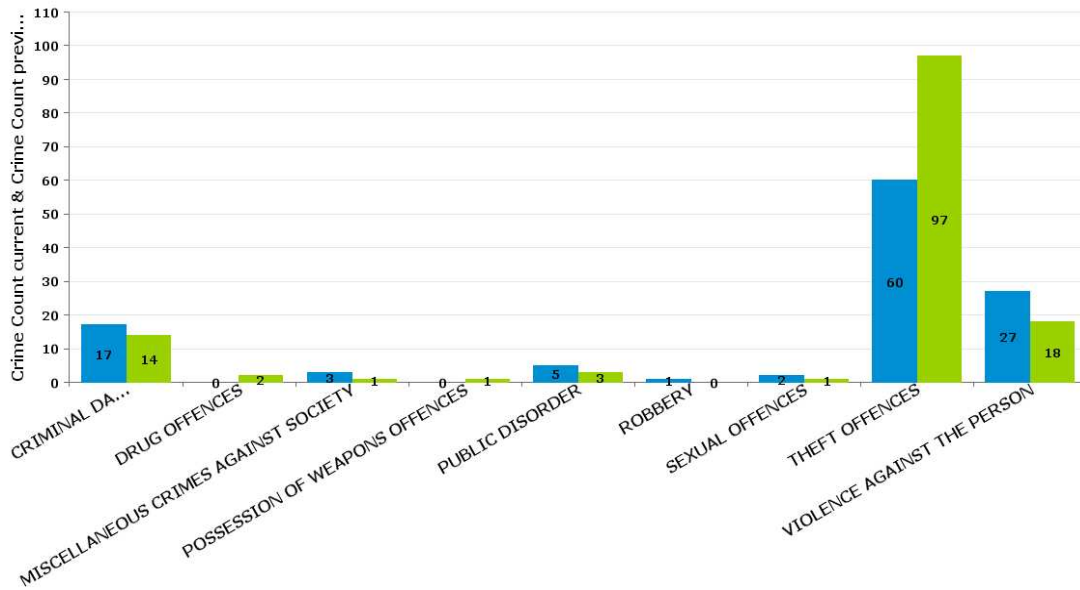
# Kettering Rural

## QUEEN ELEANOR AND BUCCLEUCH

Crime Group	Current 12 Months	Previous 12 Months	+/- Crime	% Change	Number of Resolved Crimes	Resolution Rate (12 Months)
CRIMINAL DAMAGE & ARSON	17	14	3	21.43%	1	5.88%
DRUG OFFENCES	0	2	-2	-100.00%	0	#DIV/0
MISCELLANEOUS CRIMES AGAINST SOCIETY	3	1	2	200.00%	0	0.00%
POSSESSION OF WEAPONS OFFENCES	0	1	-1	-100.00%	0	#DIV/0
PUBLIC DISORDER	5	3	2	66.67%	0	0.00%
ROBBERY	1	0	1	#DIV/0	0	0.00%
SEXUAL OFFENCES	2	1	1	100.00%	1	50.00%
THEFT OFFENCES	60	97	-37	-38.14%	2	3.33%
VIOLENCE AGAINST THE PERSON	27	18	9	50.00%	7	25.93%
<b>Sum:</b>	<b>115</b>	<b>137</b>	<b>-22</b>	<b>-16.06%</b>	<b>11</b>	<b>9.57%</b>

### Crime

■ Crime Count current ■ Crime Count previous



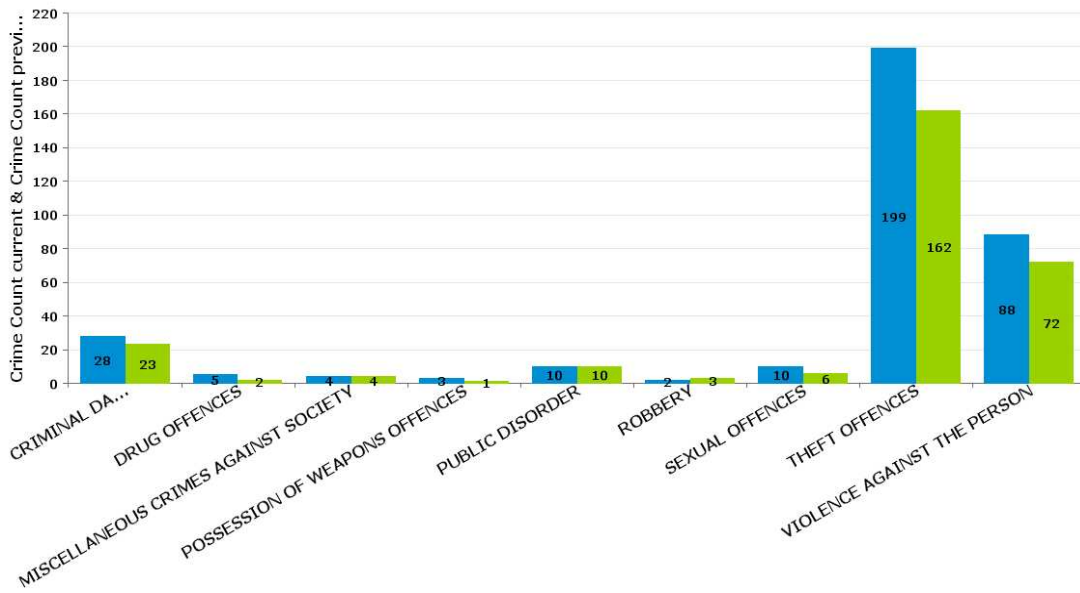
Crime Groups

SLADE

Crime Group	Current 12 Months	Previous 12 Months	+/- Crime	% Change	Number of Resolved Crimes	Resolution Rate (12 Months)
CRIMINAL DAMAGE & ARSON	28	23	5	21.74%	4	14.29%
DRUG OFFENCES	5	2	3	150.00%	1	20.00%
MISCELLANEOUS CRIMES AGAINST SOCIETY	4	4	0	0.00%	0	0.00%
POSSESSION OF WEAPONS OFFENCES	3	1	2	200.00%	1	33.33%
PUBLIC DISORDER	10	10	0	0.00%	7	70.00%
ROBBERY	2	3	-1	-33.33%	1	50.00%
SEXUAL OFFENCES	10	6	4	66.67%	0	0.00%
THEFT OFFENCES	199	162	37	22.84%	9	4.52%
VIOLENCE AGAINST THE PERSON	88	72	16	22.22%	9	10.23%
<b>Sum:</b>	<b>349</b>	<b>283</b>	<b>66</b>	<b>23.32%</b>	<b>32</b>	<b>9.17%</b>

Crime

■ Crime Count current ■ Crime Count previous



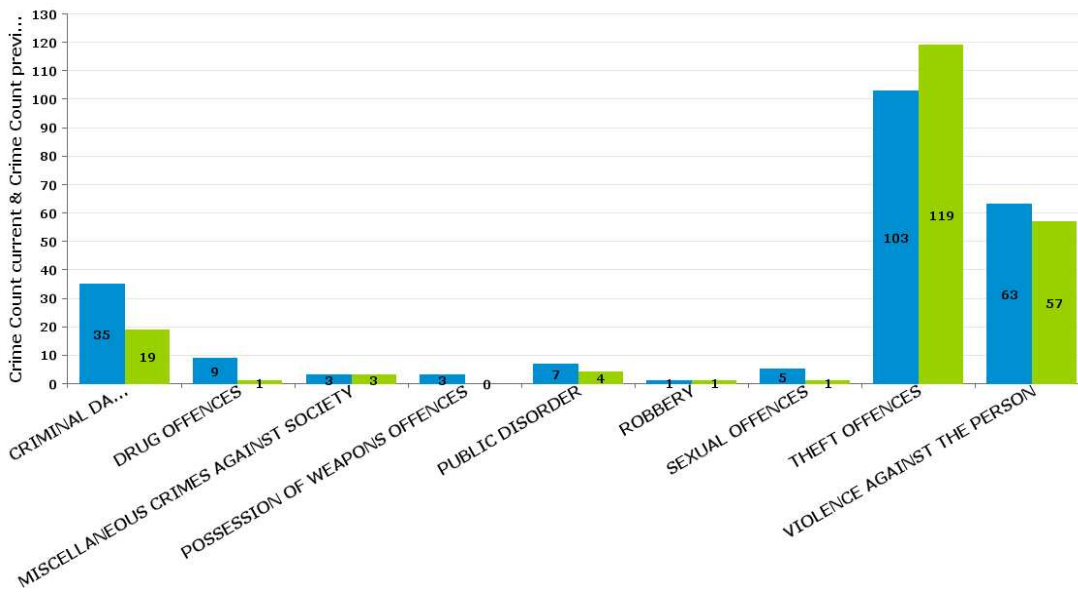
Crime Groups

WELLAND

Crime Group	Current 12 Months	Previous 12 Months	+/- Crime	% Change	Number of Resolved Crimes	Resolution Rate (12 Months)
CRIMINAL DAMAGE & ARSON	35	19	16	84.21%	3	8.57%
DRUG OFFENCES	9	1	8	800.00%	2	22.22%
MISCELLANEOUS CRIMES AGAINST SOCIETY	3	3	0	0.00%	1	33.33%
POSSESSION OF WEAPONS OFFENCES	3	0	3	#DIV/0	0	0.00%
PUBLIC DISORDER	7	4	3	75.00%	1	14.29%
ROBBERY	1	1	0	0.00%	0	0.00%
SEXUAL OFFENCES	5	1	4	400.00%	0	0.00%
THEFT OFFENCES	103	119	-16	-13.45%	4	3.88%
VIOLENCE AGAINST THE PERSON	63	57	6	10.53%	23	36.51%
<b>Sum:</b>	<b>229</b>	<b>205</b>	<b>24</b>	<b>11.71%</b>	<b>34</b>	<b>14.85%</b>

Crime

■ Crime Count current ■ Crime Count previous



Crime Groups