

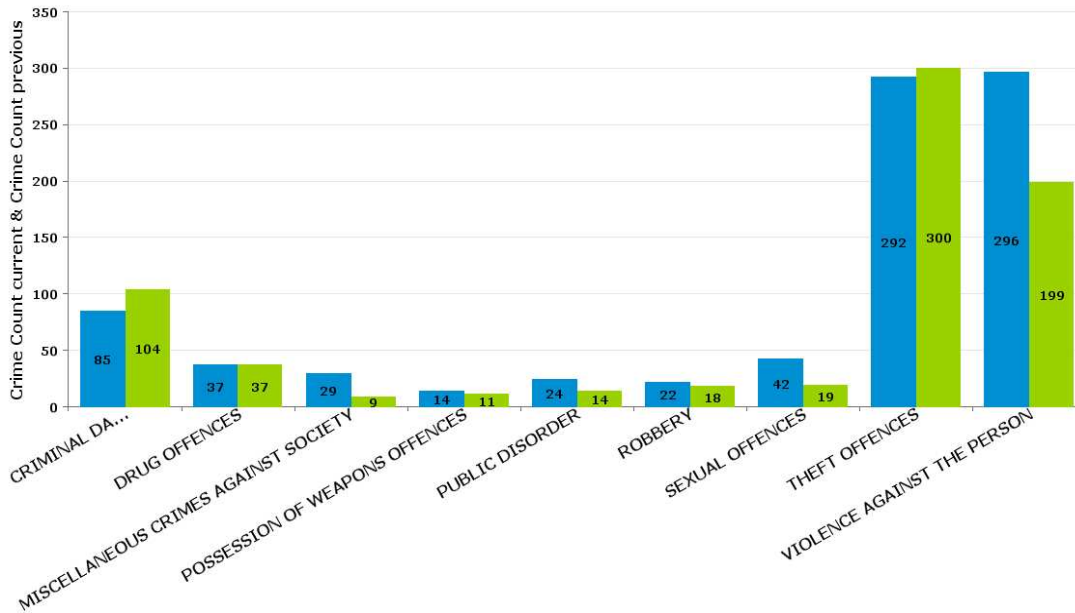
Kettering Town

ALL SAINTS

Crime Group	Current 12 Months	Previous 12 Months	+/- Crime	% Change	Number of Resolved Crimes	Resolution Rate (12 Months)
CRIMINAL DAMAGE & ARSON	85	104	-19	-18.27%	23	27.06%
DRUG OFFENCES	37	37	0	0.00%	34	91.89%
MISCELLANEOUS CRIMES AGAINST SOCIETY	29	9	20	222.22%	2	6.90%
POSSESSION OF WEAPONS OFFENCES	14	11	3	27.27%	8	57.14%
PUBLIC DISORDER	24	14	10	71.43%	3	12.50%
ROBBERY	22	18	4	22.22%	4	18.18%
SEXUAL OFFENCES	42	19	23	121.05%	4	9.52%
THEFT OFFENCES	292	300	-8	-2.67%	39	13.36%
VIOLENCE AGAINST THE PERSON	296	199	97	48.74%	38	12.84%
Sum:	841	711	130	18.28%	155	18.43%

Crime

■ Crime Count current ■ Crime Count previous



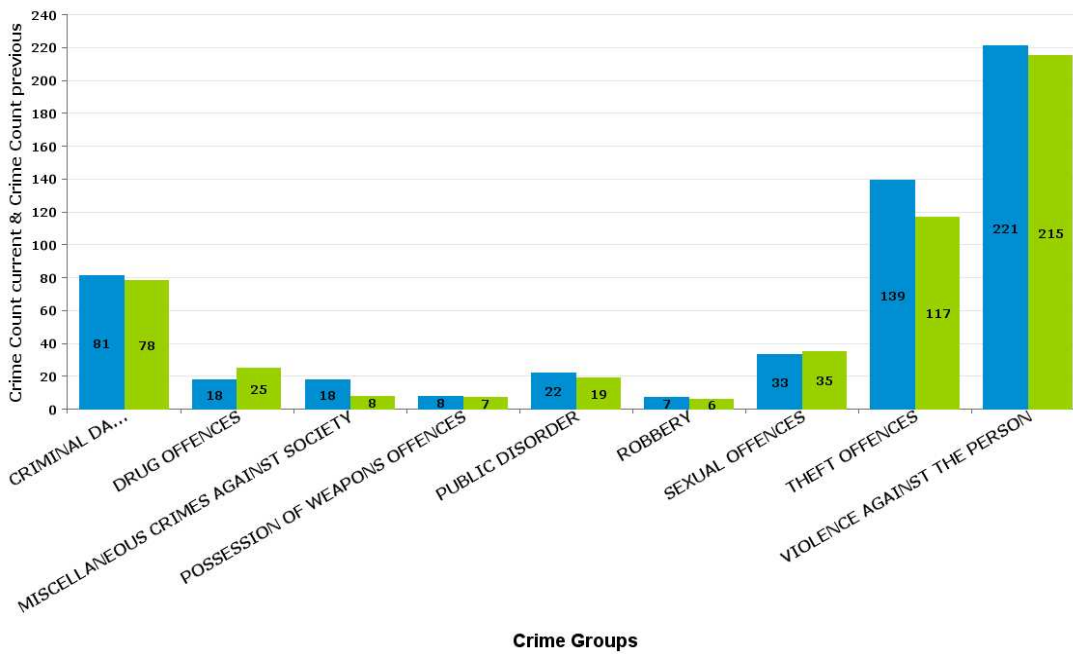
Crime Groups

AVONDALE GRANGE

Crime Group	Current 12 Months	Previous 12 Months	+/- Crime	% Change	Number of Resolved Crimes	Resolution Rate (12 Months)
CRIMINAL DAMAGE & ARSON	81	78	3	3.85%	6	7.41%
DRUG OFFENCES	18	25	-7	-28.00%	14	77.78%
MISCELLANEOUS CRIMES AGAINST SOCIETY	18	8	10	125.00%	2	11.11%
POSSESSION OF WEAPONS OFFENCES	8	7	1	14.29%	2	25.00%
PUBLIC DISORDER	22	19	3	15.79%	4	18.18%
ROBBERY	7	6	1	16.67%	3	42.86%
SEXUAL OFFENCES	33	35	-2	-5.71%	3	9.09%
THEFT OFFENCES	139	117	22	18.80%	15	10.79%
VIOLENCE AGAINST THE PERSON	221	215	6	2.79%	31	14.03%
Sum:	547	510	37	7.25%	80	14.63%

Crime

■ Crime Count current ■ Crime Count previous

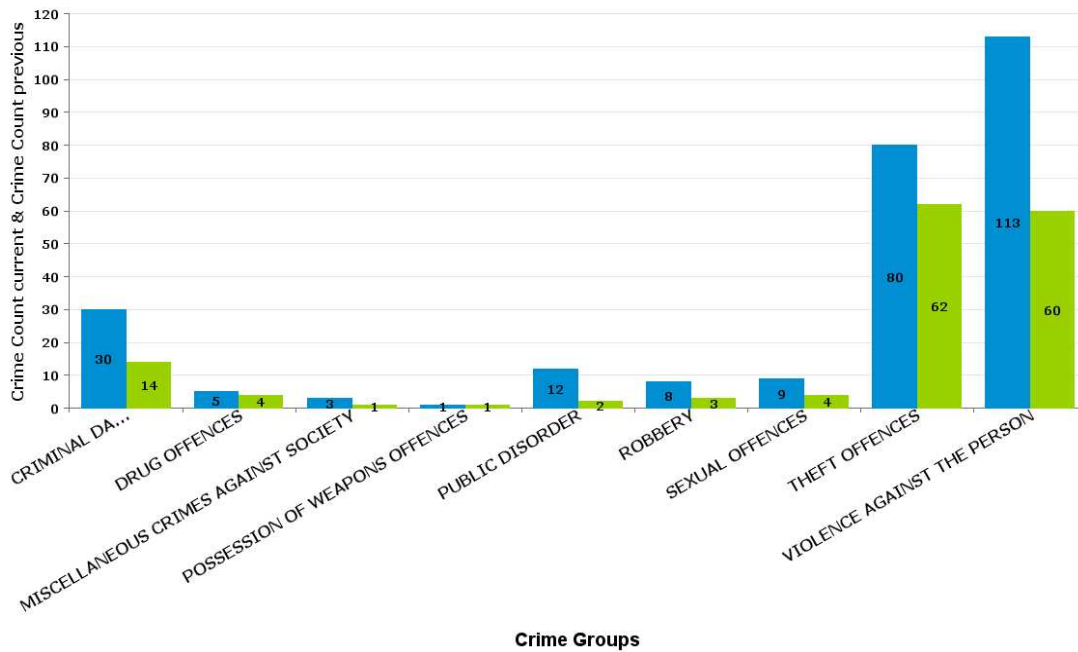


BRAMBLESIDE

Crime Group	Current 12 Months	Previous 12 Months	+/- Crime	% Change	Number of Resolved Crimes	Resolution Rate (12 Months)
CRIMINAL DAMAGE & ARSON	30	14	16	114.29%	1	3.33%
DRUG OFFENCES	5	4	1	25.00%	3	60.00%
MISCELLANEOUS CRIMES AGAINST SOCIETY	3	1	2	200.00%	1	33.33%
POSSESSION OF WEAPONS OFFENCES	1	1	0	0.00%	1	100.00%
PUBLIC DISORDER	12	2	10	500.00%	0	0.00%
ROBBERY	8	3	5	166.67%	1	12.50%
SEXUAL OFFENCES	9	4	5	125.00%	1	11.11%
THEFT OFFENCES	80	62	18	29.03%	1	1.25%
VIOLENCE AGAINST THE PERSON	113	60	53	88.33%	14	12.39%
Sum:	261	151	110	72.85%	23	8.81%

Crime

■ Crime Count current ■ Crime Count previous

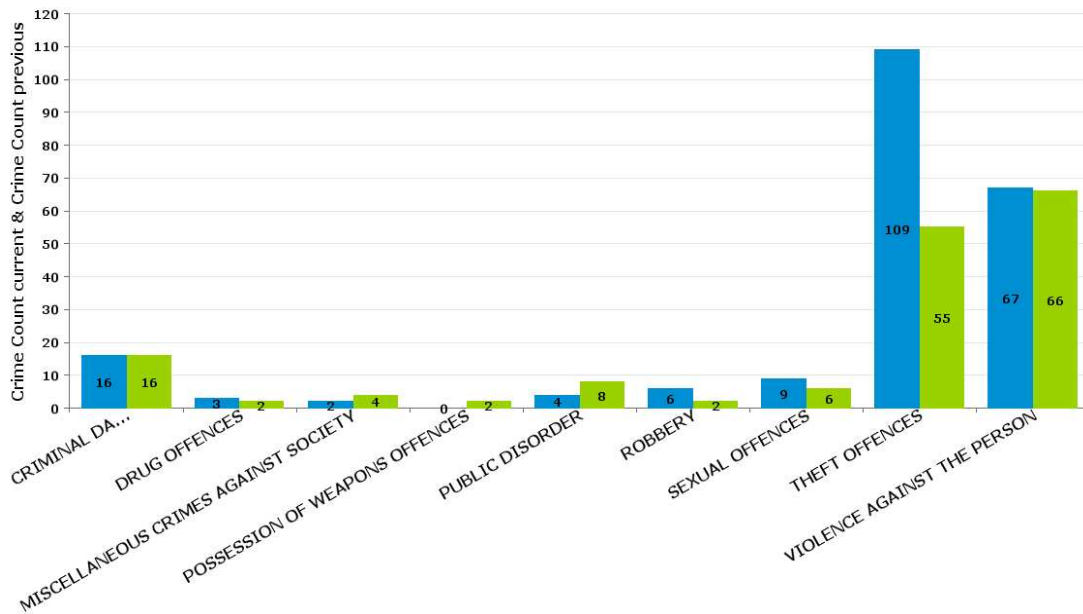


ISE LODGE

Crime Group	Current 12 Months	Previous 12 Months	+/- Crime	% Change	Number of Resolved Crimes	Resolution Rate (12 Months)
CRIMINAL DAMAGE & ARSON	16	16	0	0.00%	4	25.00%
DRUG OFFENCES	3	2	1	50.00%	2	66.67%
MISCELLANEOUS CRIMES AGAINST SOCIETY	2	4	-2	-50.00%	2	100.00%
POSSESSION OF WEAPONS OFFENCES	0	2	-2	-100.00%	1	#DIV/0
PUBLIC DISORDER	4	8	-4	-50.00%	5	125.00%
ROBBERY	6	2	4	200.00%	0	0.00%
SEXUAL OFFENCES	9	6	3	50.00%	0	0.00%
THEFT OFFENCES	109	55	54	98.18%	13	11.93%
VIOLENCE AGAINST THE PERSON	67	66	1	1.52%	21	31.34%
Sum:	216	161	55	34.16%	48	22.22%

Crime

■ Crime Count current ■ Crime Count previous



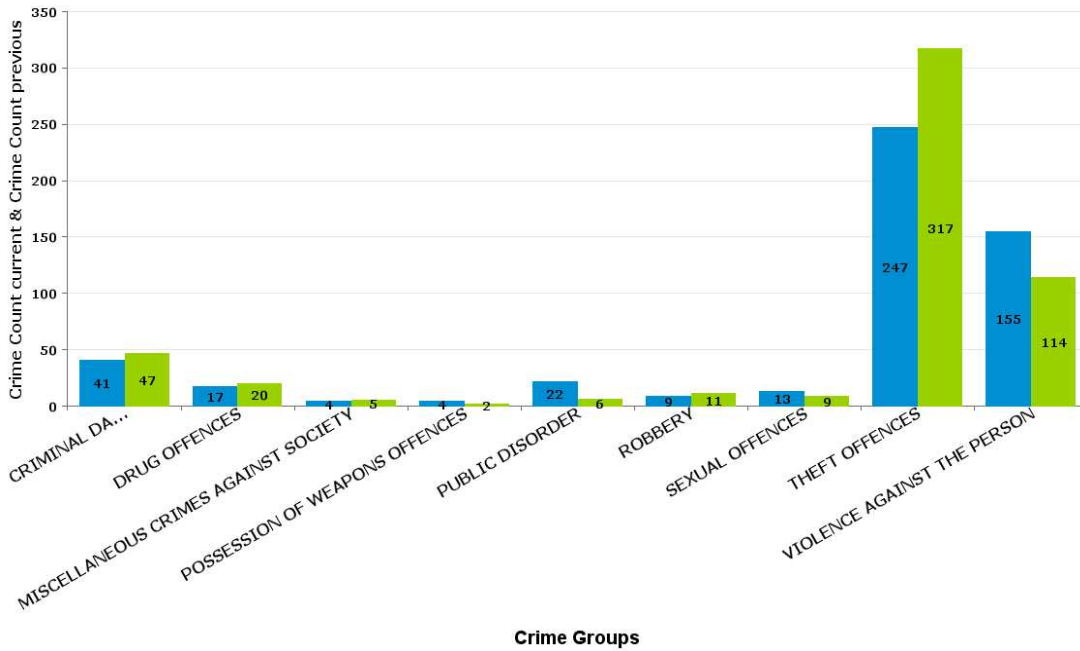
Crime Groups

NORTHFIELD

Crime Group	Current 12 Months	Previous 12 Months	+/- Crime	% Change	Number of Resolved Crimes	Resolution Rate (12 Months)
CRIMINAL DAMAGE & ARSON	41	47	-6	-12.77%	7	17.07%
DRUG OFFENCES	17	20	-3	-15.00%	13	76.47%
MISCELLANEOUS CRIMES AGAINST SOCIETY	4	5	-1	-20.00%	1	25.00%
POSSESSION OF WEAPONS OFFENCES	4	2	2	100.00%	2	50.00%
PUBLIC DISORDER	22	6	16	266.67%	1	4.55%
ROBBERY	9	11	-2	-18.18%	5	55.56%
SEXUAL OFFENCES	13	9	4	44.44%	0	0.00%
THEFT OFFENCES	247	317	-70	-22.08%	49	19.84%
VIOLENCE AGAINST THE PERSON	155	114	41	35.96%	29	18.71%
Sum:	512	531	-19	-3.58%	107	20.90%

Crime

■ Crime Count current ■ Crime Count previous

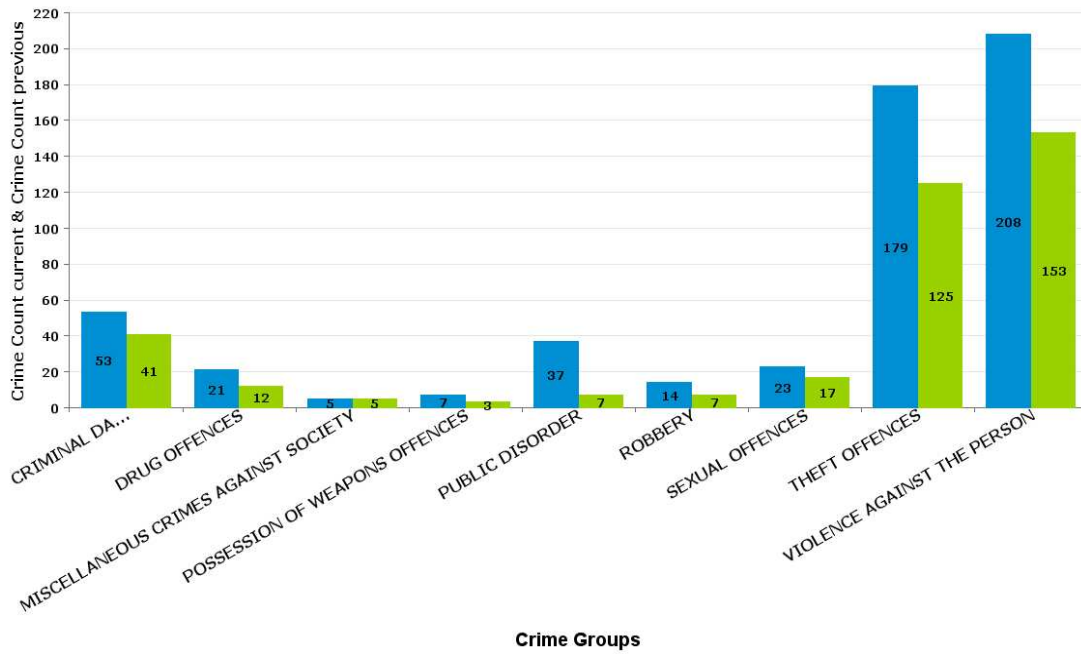


PIPERS HILL

Crime Group	Current 12 Months	Previous 12 Months	+/- Crime	% Change	Number of Resolved Crimes	Resolution Rate (12 Months)
CRIMINAL DAMAGE & ARSON	53	41	12	29.27%	6	11.32%
DRUG OFFENCES	21	12	9	75.00%	7	33.33%
MISCELLANEOUS CRIMES AGAINST SOCIETY	5	5	0	0.00%	2	40.00%
POSSESSION OF WEAPONS OFFENCES	7	3	4	133.33%	2	28.57%
PUBLIC DISORDER	37	7	30	428.57%	3	8.11%
ROBBERY	14	7	7	100.00%	4	28.57%
SEXUAL OFFENCES	23	17	6	35.29%	0	0.00%
THEFT OFFENCES	179	125	54	43.20%	11	6.15%
VIOLENCE AGAINST THE PERSON	208	153	55	35.95%	19	9.13%
Sum:	547	370	177	47.84%	54	9.87%

Crime

■ Crime Count current ■ Crime Count previous

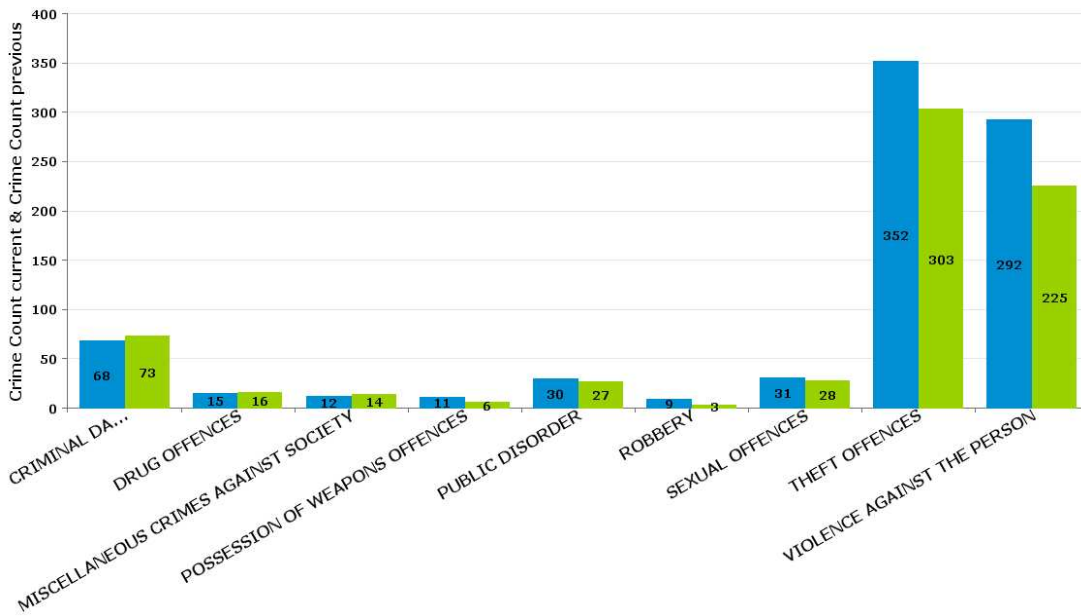


ST MICHAELS AND WICKSTEED

Crime Group	Current 12 Months	Previous 12 Months	+/- Crime	% Change	Number of Resolved Crimes	Resolution Rate (12 Months)
CRIMINAL DAMAGE & ARSON	68	73	-5	-6.85%	5	7.35%
DRUG OFFENCES	15	16	-1	-6.25%	9	60.00%
MISCELLANEOUS CRIMES AGAINST SOCIETY	12	14	-2	-14.29%	5	41.67%
POSSESSION OF WEAPONS OFFENCES	11	6	5	83.33%	1	9.09%
PUBLIC DISORDER	30	27	3	11.11%	6	20.00%
ROBBERY	9	3	6	200.00%	0	0.00%
SEXUAL OFFENCES	31	28	3	10.71%	4	12.90%
THEFT OFFENCES	352	303	49	16.17%	20	5.68%
VIOLENCE AGAINST THE PERSON	292	225	67	29.78%	45	15.41%
Sum:	820	695	125	17.99%	95	11.59%

Crime

■ Crime Count current ■ Crime Count previous



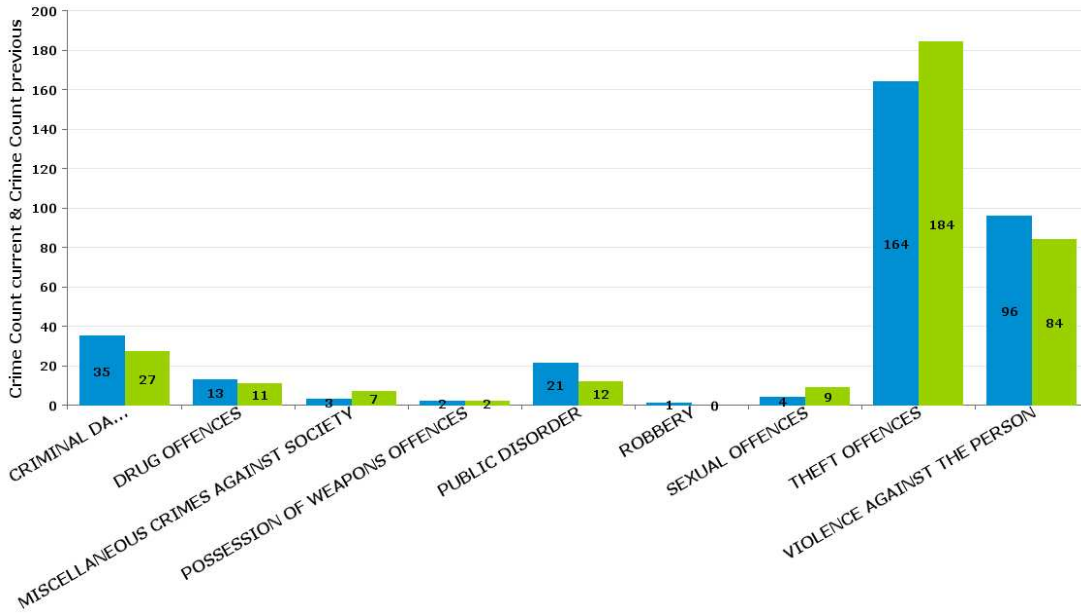
Crime Groups

ST PETERS

Crime Group	Current 12 Months	Previous 12 Months	+/- Crime	% Change	Number of Resolved Crimes	Resolution Rate (12 Months)
CRIMINAL DAMAGE & ARSON	35	27	8	29.63%	5	14.29%
DRUG OFFENCES	13	11	2	18.18%	3	23.08%
MISCELLANEOUS CRIMES AGAINST SOCIETY	3	7	-4	-57.14%	1	33.33%
POSSESSION OF WEAPONS OFFENCES	2	2	0	0.00%	0	0.00%
PUBLIC DISORDER	21	12	9	75.00%	4	19.05%
ROBBERY	1	0	1	#DIV/0	0	0.00%
SEXUAL OFFENCES	4	9	-5	-55.56%	4	100.00%
THEFT OFFENCES	164	184	-20	-10.87%	13	7.93%
VIOLENCE AGAINST THE PERSON	96	84	12	14.29%	26	27.08%
Sum:	339	336	3	0.89%	56	16.52%

Crime

■ Crime Count current ■ Crime Count previous



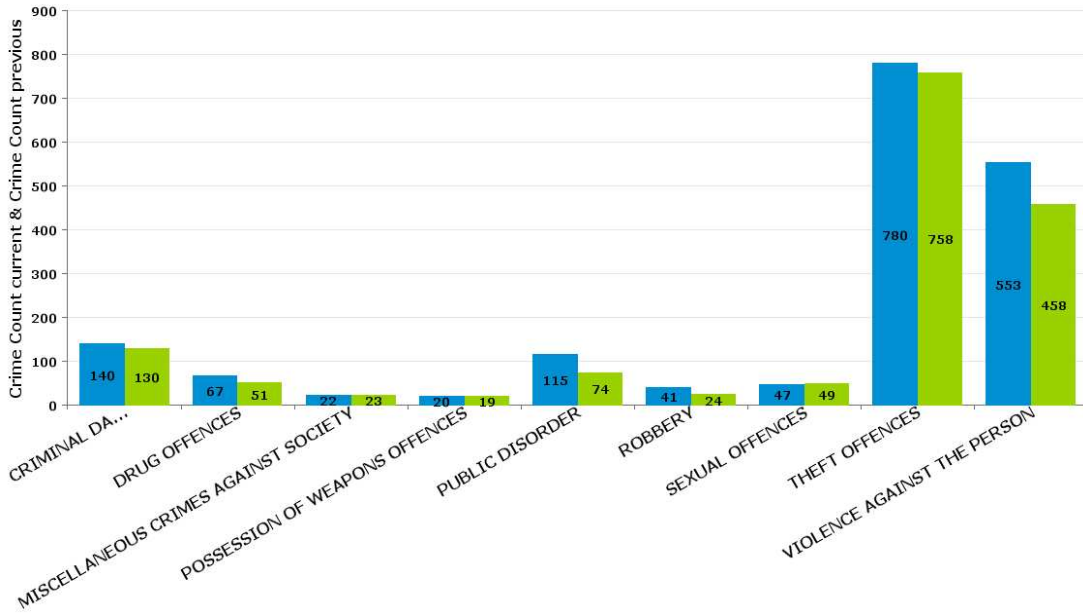
Crime Groups

WILLIAM KNIBB

Crime Group	Current 12 Months	Previous 12 Months	+/- Crime	% Change	Number of Resolved Crimes	Resolution Rate (12 Months)
CRIMINAL DAMAGE & ARSON	140	130	10	7.69%	34	24.29%
DRUG OFFENCES	67	51	16	31.37%	57	85.07%
MISCELLANEOUS CRIMES AGAINST SOCIETY	22	23	-1	-4.35%	7	31.82%
POSSESSION OF WEAPONS OFFENCES	20	19	1	5.26%	19	95.00%
PUBLIC DISORDER	115	74	41	55.41%	33	28.70%
ROBBERY	41	24	17	70.83%	6	14.63%
SEXUAL OFFENCES	47	49	-2	-4.08%	4	8.51%
THEFT OFFENCES	780	758	22	2.90%	130	16.67%
VIOLENCE AGAINST THE PERSON	553	458	95	20.74%	105	18.99%
Sum:	1784	1586	198	12.48%	395	22.13%

Crime

■ Crime Count current ■ Crime Count previous



Crime Groups