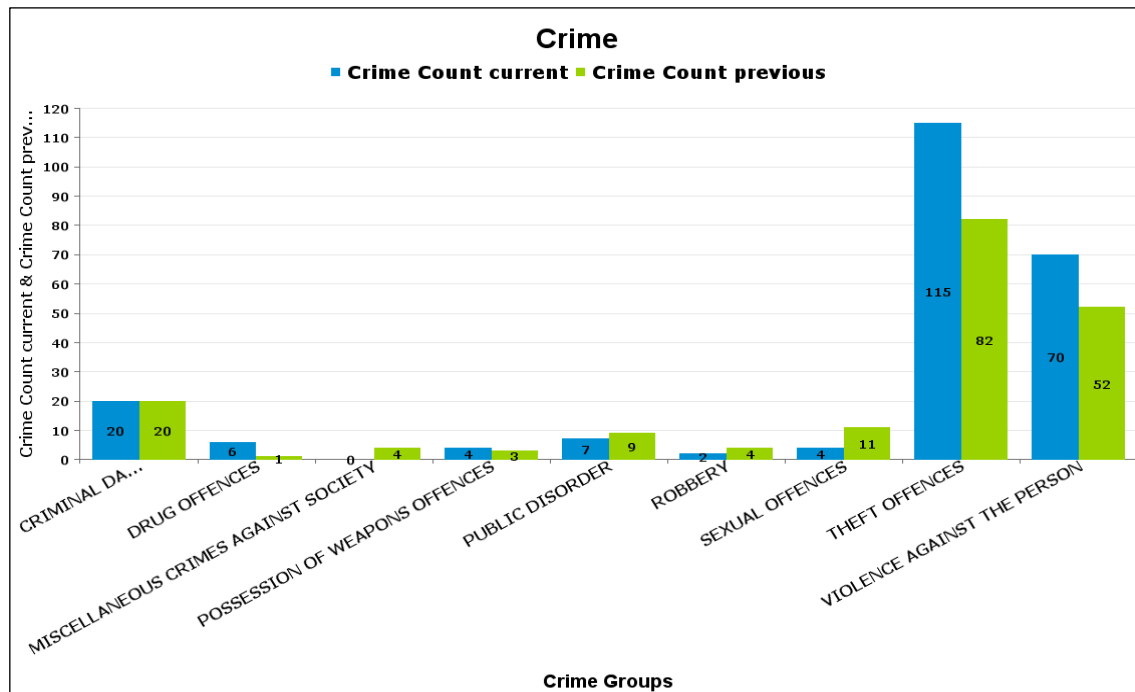


# Kettering A6 Towns

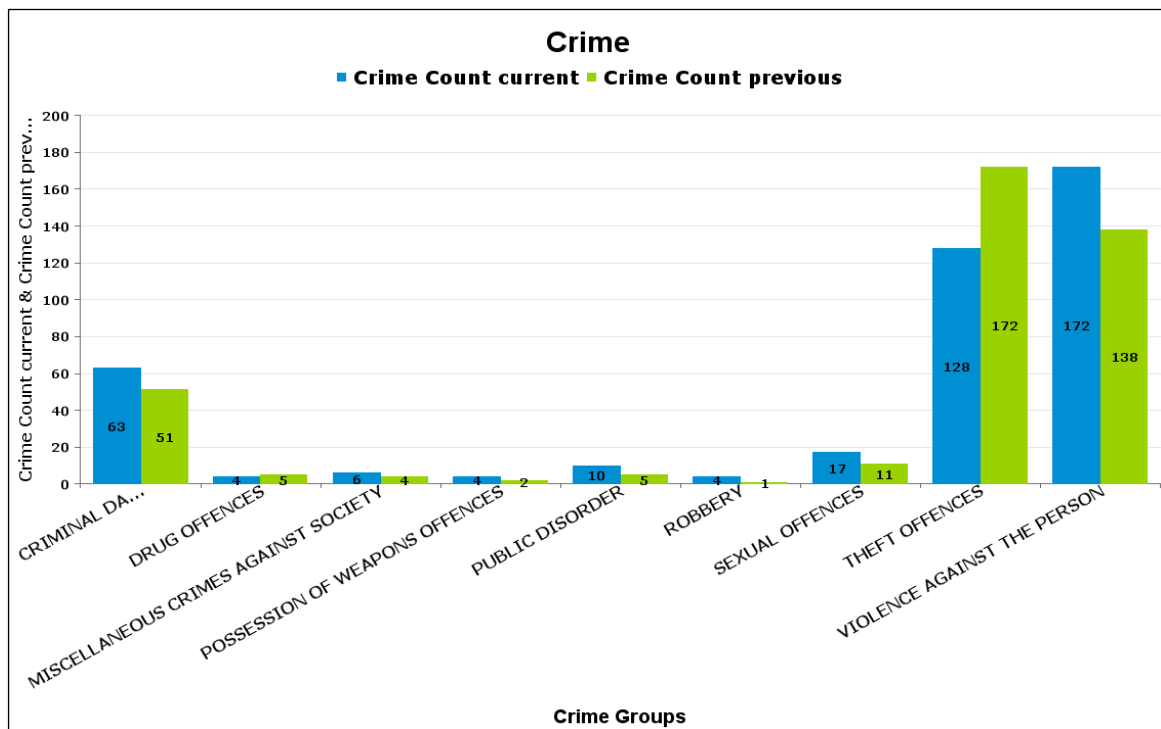
## BARTON

Crime Group	Current 12 Months	Previous 12 Months	+/- Crime	% Change	Number of Resolved Crimes	Resolution Rate (12 Months)
CRIMINAL DAMAGE & ARSON	20	20	0	0.00%	1	5.00%
DRUG OFFENCES	6	1	5	500.00%	1	16.67%
MISCELLANEOUS CRIMES AGAINST SOCIETY	0	4	-4	-100.00%	0	#DIV/0
POSSESSION OF WEAPONS OFFENCES	4	3	1	33.33%	1	25.00%
PUBLIC DISORDER	7	9	-2	-22.22%	1	14.29%
ROBBERY	2	4	-2	-50.00%	3	150.00%
SEXUAL OFFENCES	4	11	-7	-63.64%	0	0.00%
THEFT OFFENCES	115	82	33	40.24%	5	4.35%
VIOLENCE AGAINST THE PERSON	70	52	18	34.62%	16	22.86%
<b>Sum:</b>	<b>228</b>	<b>186</b>	<b>42</b>	<b>22.58%</b>	<b>28</b>	<b>12.28%</b>



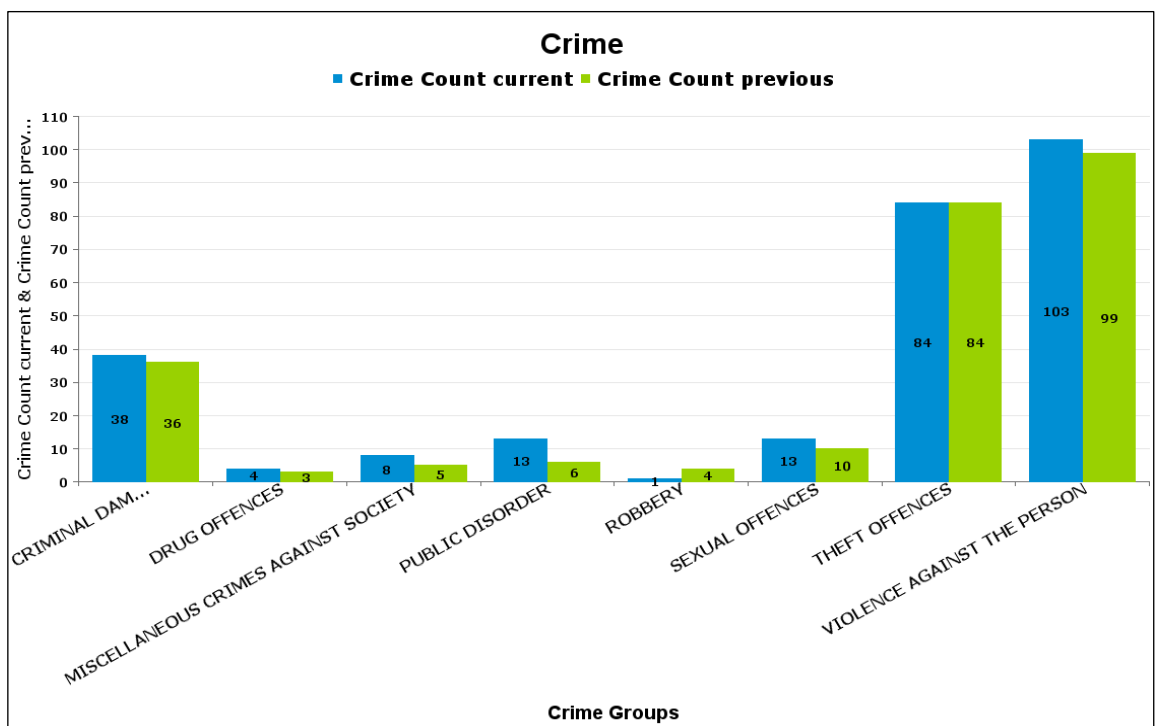
BURTON LATIMER

Crime Group	Current 12 Months	Previous 12 Months	+/- Crime	% Change	Number of Resolved Crimes	Resolution Rate (12 Months)
CRIMINAL DAMAGE & ARSON	63	51	12	23.53%	6	9.52%
DRUG OFFENCES	4	5	-1	-20.00%	3	75.00%
MISCELLANEOUS CRIMES AGAINST SOCIETY	6	4	2	50.00%	1	16.67%
POSSESSION OF WEAPONS OFFENCES	4	2	2	100.00%	0	0.00%
PUBLIC DISORDER	10	5	5	100.00%	1	10.00%
ROBBERY	4	1	3	300.00%	1	25.00%
SEXUAL OFFENCES	17	11	6	54.55%	0	0.00%
THEFT OFFENCES	128	172	-44	-25.58%	21	16.41%
VIOLENCE AGAINST THE PERSON	172	138	34	24.64%	27	15.70%
<b>Sum:</b>	<b>408</b>	<b>389</b>	<b>19</b>	<b>4.88%</b>	<b>60</b>	<b>14.71%</b>



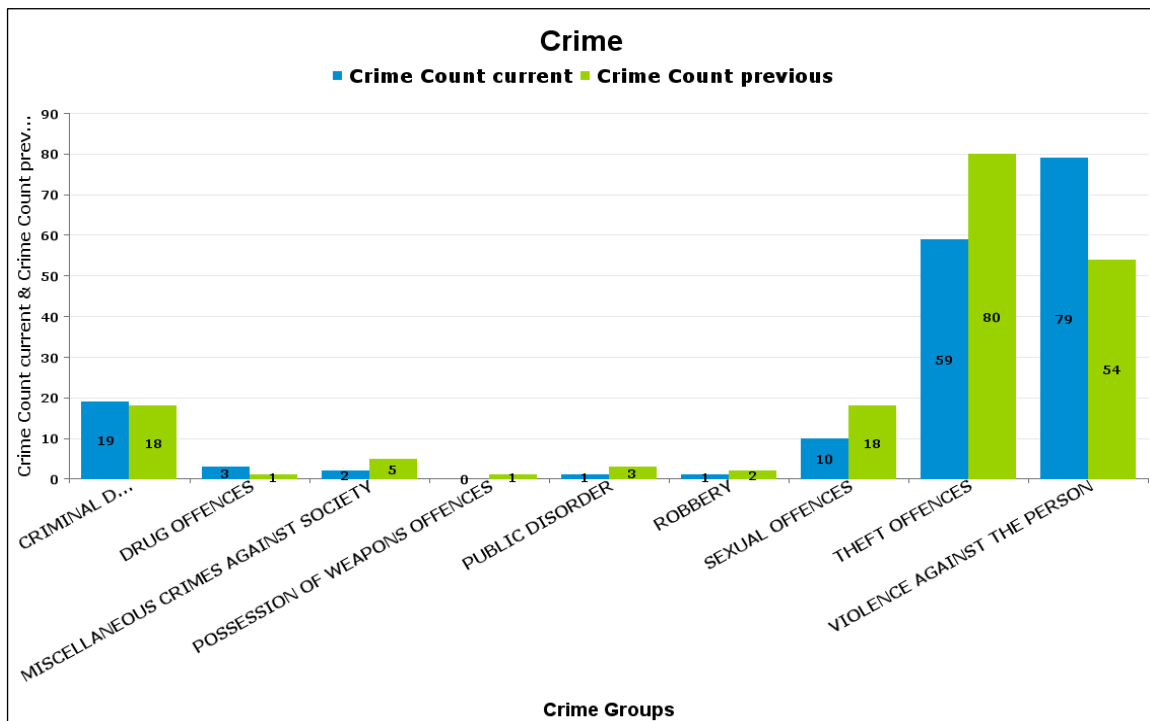
DESBOROUGH LOATLAND

Crime Group	Current 12 Months	Previous 12 Months	+/- Crime	% Change	Number of Resolved Crimes	Resolution Rate (12 Months)
CRIMINAL DAMAGE & ARSON	38	36	2	5.56%	2	5.26%
DRUG OFFENCES	4	3	1	33.33%	1	25.00%
MISCELLANEOUS CRIMES AGAINST SOCIETY	8	5	3	60.00%	1	12.50%
PUBLIC DISORDER	13	6	7	116.67%	3	23.08%
ROBBERY	1	4	-3	-75.00%	0	0.00%
SEXUAL OFFENCES	13	10	3	30.00%	3	23.08%
THEFT OFFENCES	84	84	0	0.00%	1	1.19%
VIOLENCE AGAINST THE PERSON	103	99	4	4.04%	25	24.27%
<b>Sum:</b>	<b>264</b>	<b>247</b>	<b>17</b>	<b>6.88%</b>	<b>36</b>	<b>13.64%</b>



## DESBOROUGH ST GILES

Crime Group	Current 12 Months	Previous 12 Months	+/- Crime	% Change	Number of Resolved Crimes	Resolution Rate (12 Months)
CRIMINAL DAMAGE & ARSON	19	18	1	5.56%	0	0.00%
DRUG OFFENCES	3	1	2	200.00%	1	33.33%
MISCELLANEOUS CRIMES AGAINST SOCIETY	2	5	-3	-60.00%	2	100.00%
POSSESSION OF WEAPONS OFFENCES	0	1	-1	-100.00%	0	#DIV/0
PUBLIC DISORDER	1	3	-2	-66.67%	1	100.00%
ROBBERY	1	2	-1	-50.00%	0	0.00%
SEXUAL OFFENCES	10	18	-8	-44.44%	3	30.00%
THEFT OFFENCES	59	80	-21	-26.25%	1	1.69%
VIOLENCE AGAINST THE PERSON	79	54	25	46.30%	11	13.92%
<b>Sum:</b>	<b>174</b>	<b>182</b>	<b>-8</b>	<b>-4.40%</b>	<b>19</b>	<b>10.92%</b>



ROTHWELL

Crime Group	Current 12 Months	Previous 12 Months	+/- Crime	% Change	Number of Resolved Crimes	Resolution Rate (12 Months)
CRIMINAL DAMAGE & ARSON	84	77	7	9.09%	8	9.52%
DRUG OFFENCES	14	5	9	180.00%	4	28.57%
MISCELLANEOUS CRIMES AGAINST SOCIETY	18	5	13	260.00%	2	11.11%
POSSESSION OF WEAPONS OFFENCES	9	2	7	350.00%	1	11.11%
PUBLIC DISORDER	20	14	6	42.86%	2	10.00%
ROBBERY	9	4	5	125.00%	1	11.11%
SEXUAL OFFENCES	33	17	16	94.12%	1	3.03%
THEFT OFFENCES	232	295	-63	-21.36%	13	5.60%
VIOLENCE AGAINST THE PERSON	204	138	66	47.83%	22	10.78%
<b>Sum:</b>	<b>623</b>	<b>557</b>	<b>66</b>	<b>11.85%</b>	<b>54</b>	<b>8.67%</b>

