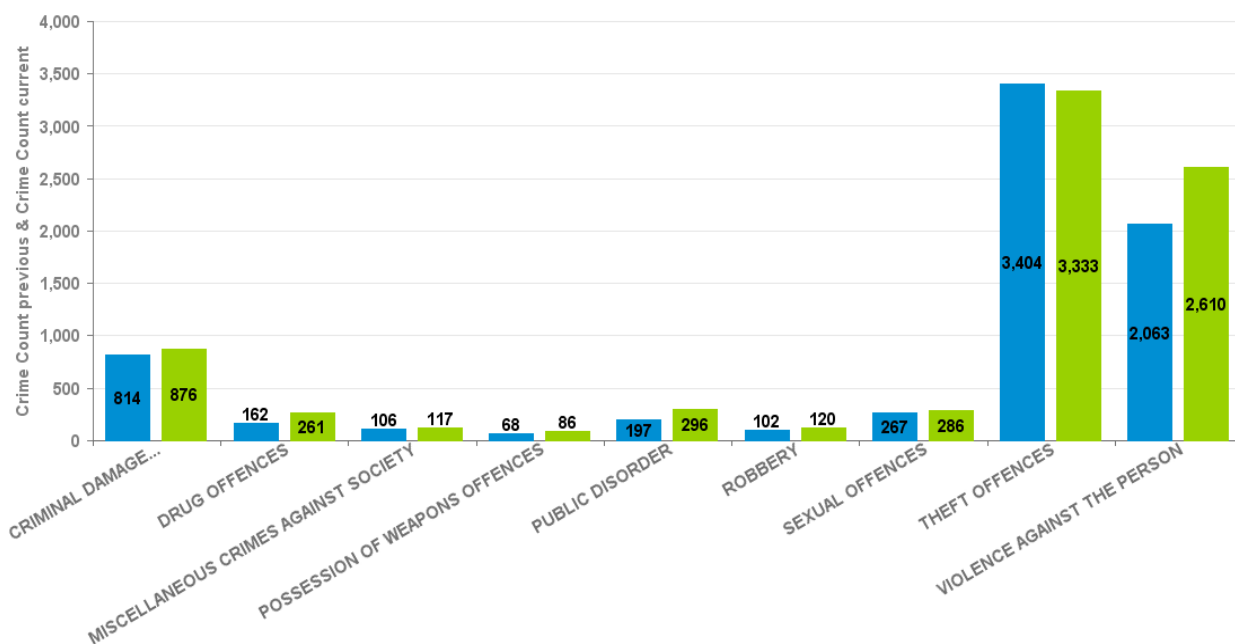


KETTERING BOROUGH

Crime Group	% of Current 12mths Crime Against All Crime	Current 12 mths	Previous 12 mths	+/- Crime	% Change	Number of resolved Crimes	Resolved Rate (past 12mths)
CRIMINAL DAMAGE & ARSON	10.97%	876	814	62	7.62%	114	13.01%
DRUG OFFENCES	3.27%	261	162	99	61.11%	198	75.86%
MISCELLANEOUS CRIMES AGAINST SOCIETY	1.47%	117	106	11	10.38%	11	9.40%
POSSESSION OF WEAPONS OFFENCES	1.08%	86	68	18	26.47%	38	44.19%
PUBLIC DISORDER	3.71%	296	197	99	50.25%	89	30.07%
ROBBERY	1.50%	120	102	18	17.65%	21	17.50%
SEXUAL OFFENCES	3.58%	286	267	19	7.12%	27	9.44%
THEFT OFFENCES	41.74%	3333	3404	-71	-2.09%	271	8.13%
VIOLENCE AGAINST THE PERSON	32.69%	2610	2063	547	26.51%	420	16.09%
				0	-100.00%	3	
Sum:	100.00%	7985	7183	802	11.17%	1192	

All Crime

■ Crime Count previous ■ Crime Count current



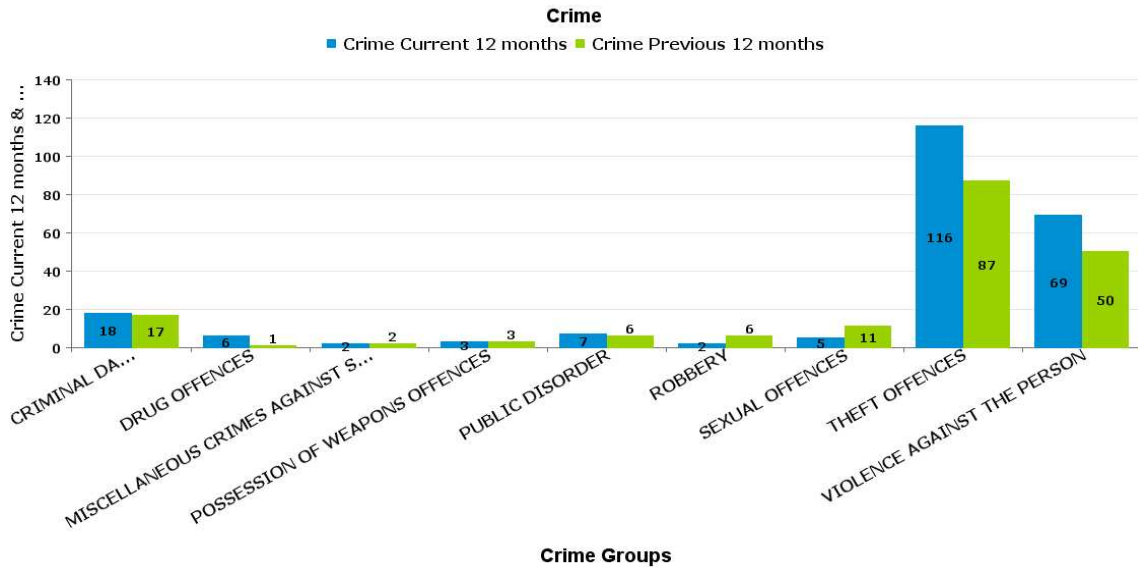
Crime Tree LV2 Desc

Crime Reports by CSP Sector and Ward

KETTERING A6 TOWNS

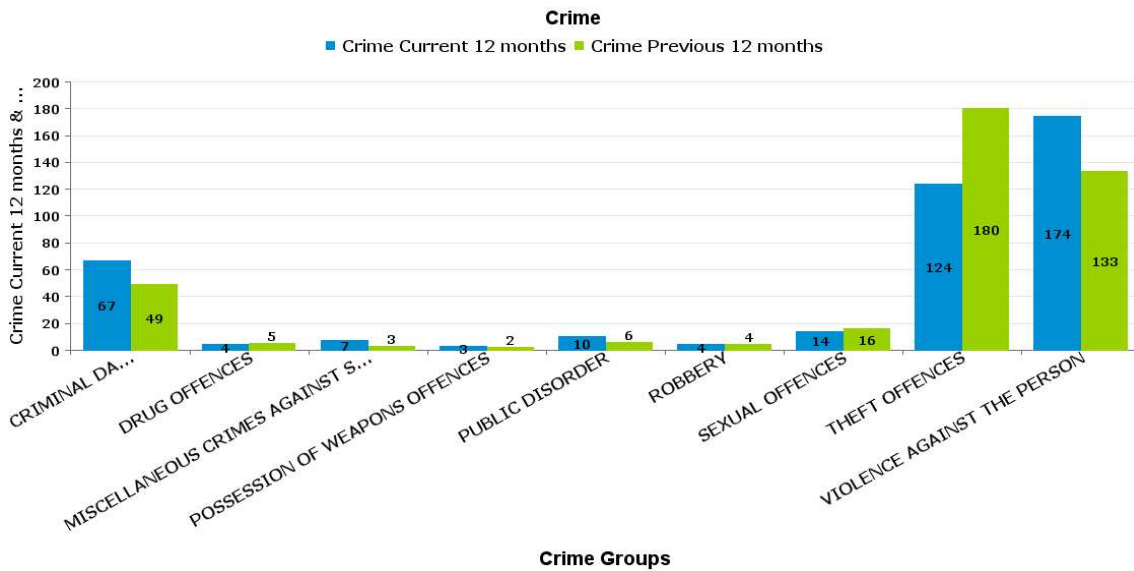
BARTON

Crime Group	% of Current 12mths Crime Against All Crime	Curent 12 mths	Previous 12 mths	+/- Crime	% Change	Number of resolved Crimes	Resolved Rate (past 12mths)
CRIMINAL DAMAGE & ARSON	7.89%	18	17	1	5.88%	1	5.56%
DRUG OFFENCES	2.63%	6	1	5	500.00%	3	50.00%
MISCELLANEOUS CRIMES AGAINST SOCIETY	0.88%	2	2	0	0.00%		
POSSESSION OF WEAPONS OFFENCES	1.32%	3	3	0	0.00%	1	33.33%
PUBLIC DISORDER	3.07%	7	6	1	16.67%		
ROBBERY	0.88%	2	6	-4	-66.67%	3	150.00%
SEXUAL OFFENCES	2.19%	5	11	-6	-54.55%		
THEFT OFFENCES	50.88%	116	87	29	33.33%	13	11.21%
VIOLENCE AGAINST THE PERSON	30.26%	69	50	19	38.00%	11	15.94%
Sum:	100.00%	228	183	45	24.59%	32	



BURTON LATIMER

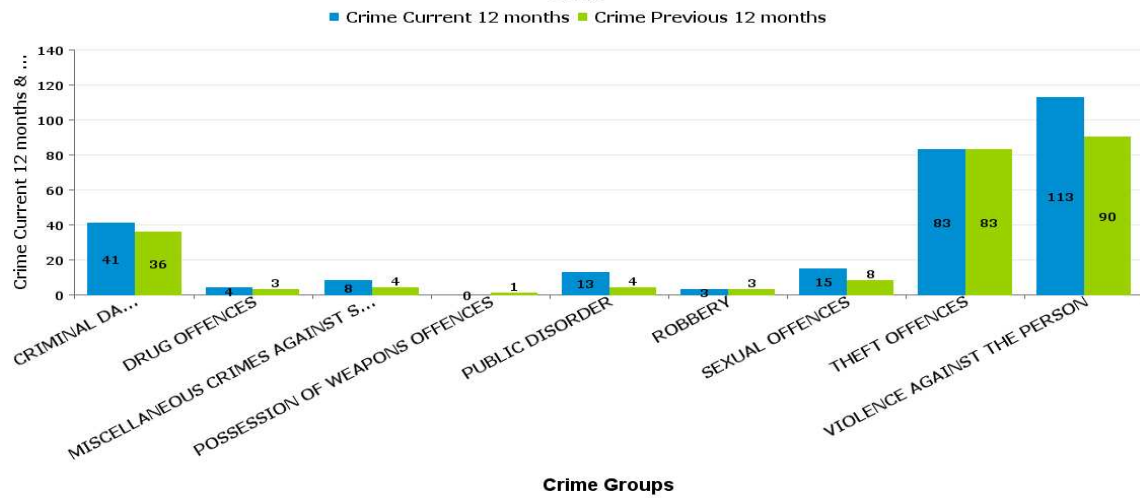
Crime Group	% of Current 12mths Crime Against All Crime	Current 12 mths	Previous 12 mths	+/- Crime	% Change	Number of resolved Crimes	Resolved Rate (past 12mths)
CRIMINAL DAMAGE & ARSON	16.46%	67	49	18	36.73%	6	8.96%
DRUG OFFENCES	0.98%	4	5	-1	-20.00%	5	125.00%
MISCELLANEOUS CRIMES AGAINST SOCIETY	1.72%	7	3	4	133.33%		
POSSESSION OF WEAPONS OFFENCES	0.74%	3	2	1	50.00%		
PUBLIC DISORDER	2.46%	10	6	4	66.67%		
ROBBERY	0.98%	4	4	0	0.00%	1	25.00%
SEXUAL OFFENCES	3.44%	14	16	-2	-12.50%	1	7.14%
THEFT OFFENCES	30.47%	124	180	-56	-31.11%	3	2.42%
VIOLENCE AGAINST THE PERSON	42.75%	174	133	41	30.83%	23	13.22%
Sum:	100.00%	407	398	9	2.26%	39	



DESBOROUGH LOATLAND

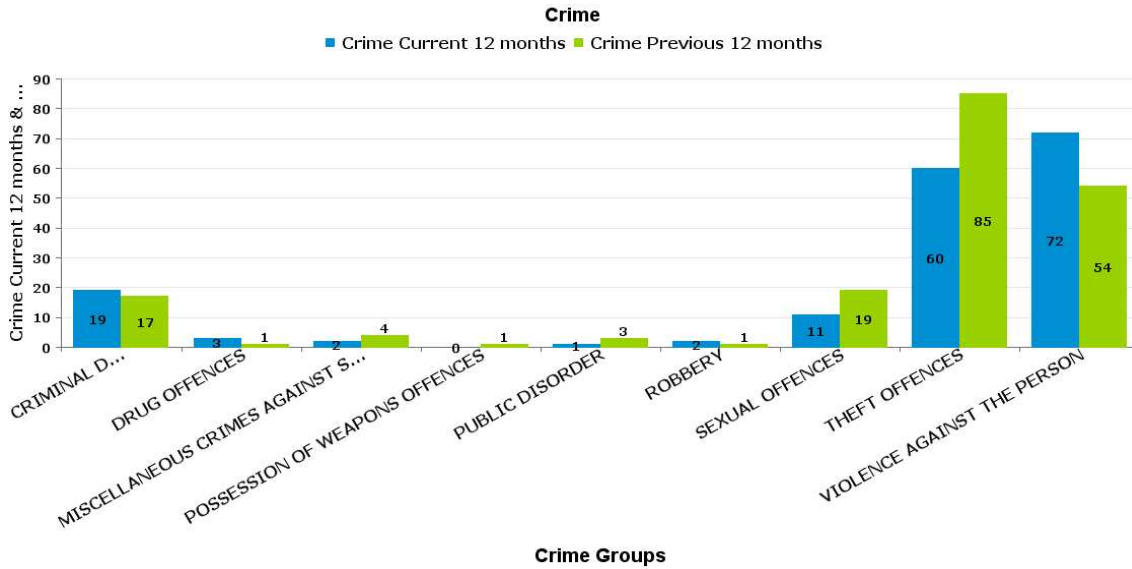
Crime Group	% of Current 12mths Crime Against All Crime	Current 12 mths	Previous 12 mths	+/- Crime	% Change	Number of resolved Crimes	Resolved Rate (past 12mths)
CRIMINAL DAMAGE & ARSON	14.64%	41	36	5	13.89%	2	4.88%
DRUG OFFENCES	1.43%	4	3	1	33.33%	4	100.00%
MISCELLANEOUS CRIMES AGAINST SOCIETY	2.86%	8	4	4	100.00%		
POSSESSION OF WEAPONS OFFENCES		0	1	-1	-100.00%		
PUBLIC DISORDER	4.64%	13	4	9	225.00%	5	38.46%
ROBBERY	1.07%	3	3	0	0.00%		
SEXUAL OFFENCES	5.36%	15	8	7	87.50%	1	6.67%
THEFT OFFENCES	29.64%	83	83	0	0.00%		
VIOLENCE AGAINST THE PERSON	40.36%	113	90	23	25.56%	18	15.93%
Sum:	100.00%	280	232	48	20.69%	30	

Crime



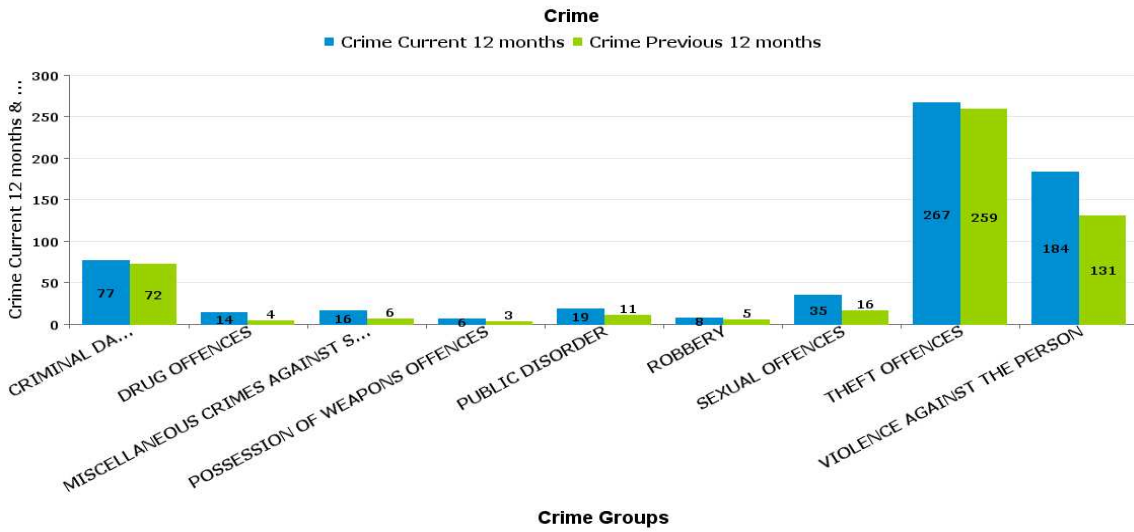
DESBOROUGH ST GILES

Crime Group	% of Current 12mths Crime Against All Crime	Current 12 mths	Previous 12 mths	+/- Crime	% Change	Number of resolved Crimes	Resolved Rate (past 12mths)
CRIMINAL DAMAGE & ARSON	11.18%	19	17	2	11.76%	2	10.53%
DRUG OFFENCES	1.76%	3	1	2	200.00%	4	133.33%
MISCELLANEOUS CRIMES AGAINST SOCIETY	1.18%	2	4	-2	-50.00%	1	50.00%
POSSESSION OF WEAPONS OFFENCES		0	1	-1	-100.00%		
PUBLIC DISORDER	0.59%	1	3	-2	-66.67%		
ROBBERY	1.18%	2	1	1	100.00%	1	50.00%
SEXUAL OFFENCES	6.47%	11	19	-8	-42.11%	6	54.55%
THEFT OFFENCES	35.29%	60	85	-25	-29.41%		
VIOLENCE AGAINST THE PERSON	42.35%	72	54	18	33.33%	8	11.11%
Sum:	100.00%	170	185	-15	-8.11%	22	



ROTHWELL

Crime Group	% of Current 12mths Crime Against All Crime	Crime		+/- Crime	% Change	Number of resolved Crimes	Resolved Rate (past 12mths)
		Curent 12 mths	Previous 12 mths				
CRIMINAL DAMAGE & ARSON	12.30%	77	72	5	6.94%	7	9.09%
DRUG OFFENCES	2.24%	14	4	10	250.00%	9	64.29%
MISCELLANEOUS CRIMES AGAINST SOCIETY	2.56%	16	6	10	166.67%		
POSSESSION OF WEAPONS OFFENCES	0.96%	6	3	3	100.00%		
PUBLIC DISORDER	3.04%	19	11	8	72.73%	6	31.58%
ROBBERY	1.28%	8	5	3	60.00%		
SEXUAL OFFENCES	5.59%	35	16	19	118.75%	4	11.43%
THEFT OFFENCES	42.65%	267	259	8	3.09%	7	2.62%
VIOLENCE AGAINST THE PERSON	29.39%	184	131	53	40.46%	22	11.96%
		0	0	0	-100.00%	1	
Sum:	100.00%	626	507	119	23.47%	56	



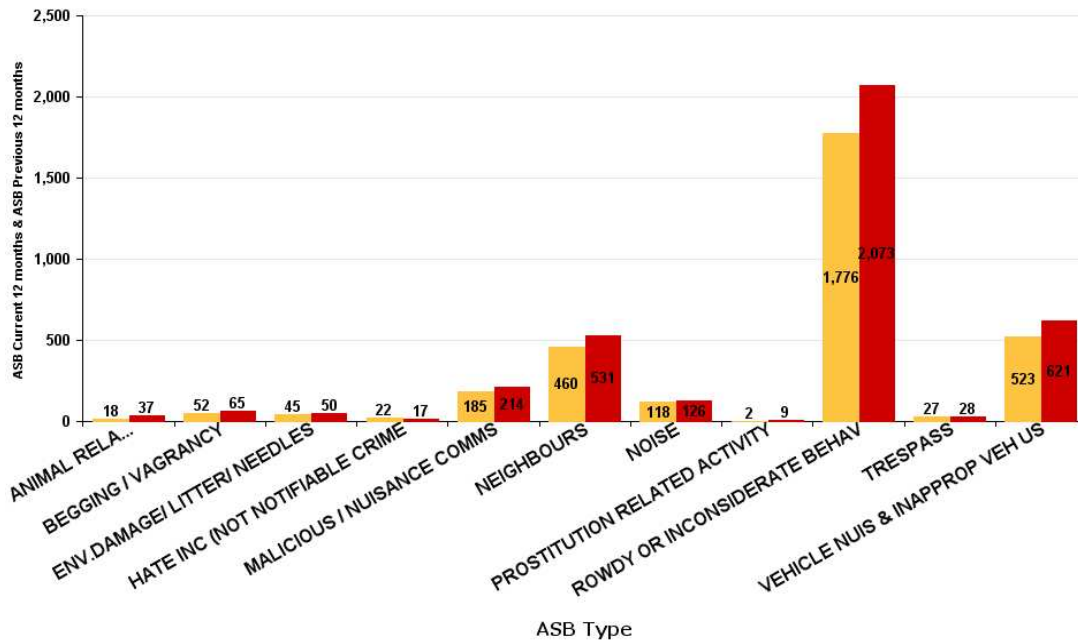
ASB Reports by CSP Sector and Ward

KETTERING BOROUGH ASB

ASB Type	Current 12 mths	Previous 12 mths	+/- Crime	% Change
ANIMAL RELATED INC ANTI-SOCIAL	18	37	-19	-51.35%
BEGGING / VAGRANCY	52	65	-13	-20.00%
ENV.DAMAGE/ LITTER/ NEEDLES	45	50	-5	-10.00%
HATE INC (NOT NOTIFIABLE CRIME)	22	17	5	29.41%
MALICIOUS / NUISANCE COMMS	185	214	-29	-13.55%
NEIGHBOURS	460	531	-71	-13.37%
NOISE	118	126	-8	-6.35%
PROSTITUTION RELATED ACTIVITY	2	9	-7	-77.78%
ROWDY OR INCONSIDERATE BEHAV	1776	2073	-297	-14.33%
TRESPASS	27	28	-1	-3.57%
VEHICLE NUIS & INAPPROP VEH US	523	621	-98	-15.78%
Sum:	3228	3771	-543	-14.40%

ASB

ASB Current 12 months ASB Previous 12 months



ASB Reports by CSP Sector and Ward

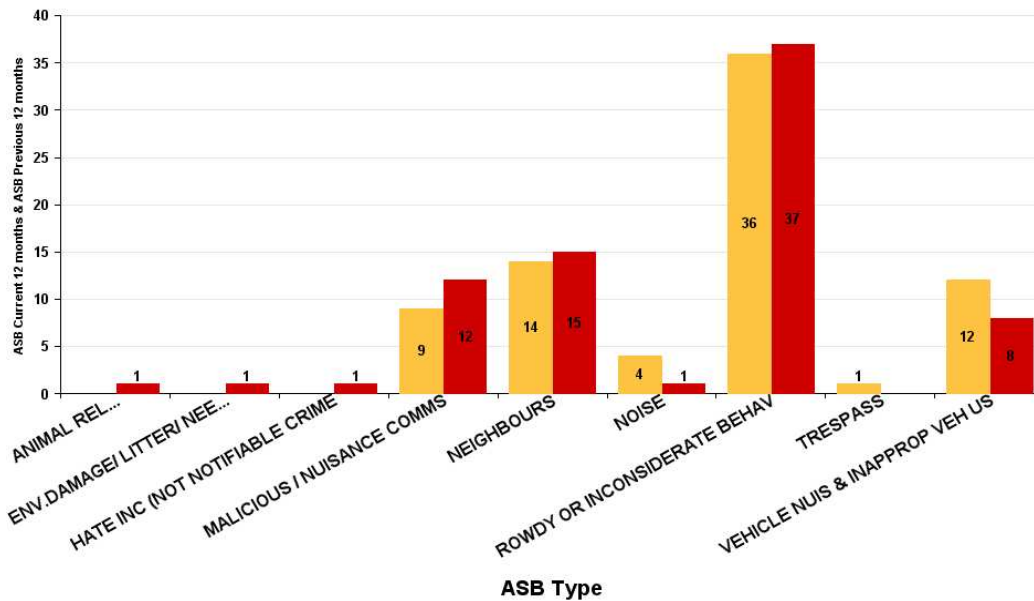
KETTERING A6 TOWNS

Barton

ASB Type	Current 12 mths	Previous 12 mths	+/- Crime	% Change
ANIMAL RELATED INC ANTI-SOCIAL		1	-1	-100.00%
ENV.DAMAGE/ LITTER/ NEEDLES		1	-1	-100.00%
HATE INC (NOT NOTIFIABLE CRIME		1	-1	-100.00%
MALICIOUS / NUISANCE COMMS	9	12	-3	-25.00%
NEIGHBOURS	14	15	-1	-6.67%
NOISE	4	1	3	300.00%
ROWDY OR INCONSIDERATE BEHAV	36	37	-1	-2.70%
TRESPASS	1		1	-100.00%
VEHICLE NUIS & INAPPROP VEH US	12	8	4	50.00%
Sum:	76	76	0	0.00%

ASB

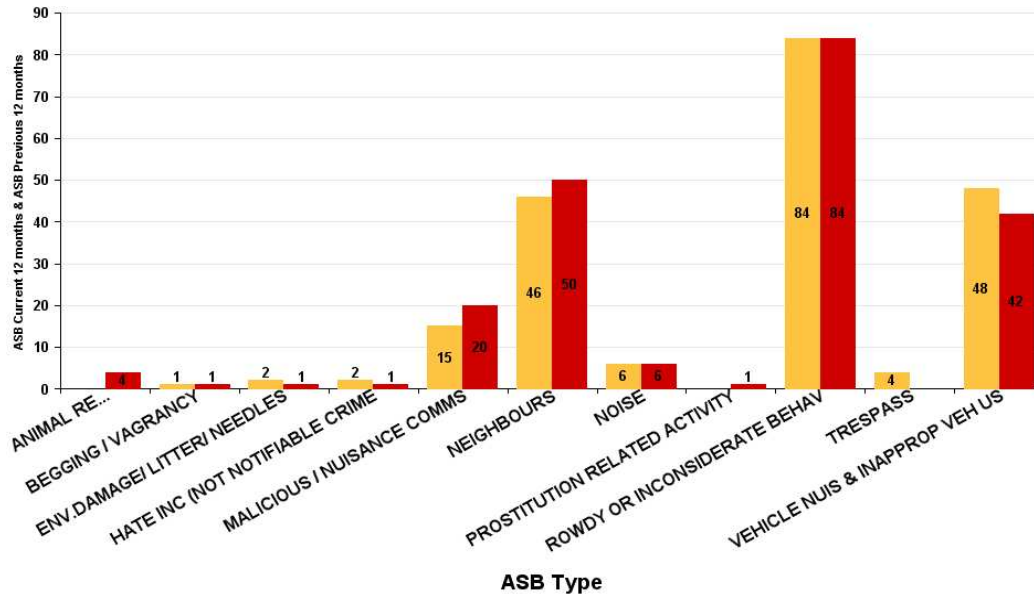
ASB Current 12 months ASB Previous 12 months



ASB Type	Current 12 mths	Previous 12 mths	+/- Crime	% Change
ANIMAL RELATED INC ANTI-SOCIAL		4	-4	-100.00%
BEGGING / VAGRANCY	1	1	0	0.00%
ENV.DAMAGE/ LITTER/ NEEDLES	2	1	1	100.00%
HATE INC (NOT NOTIFIABLE CRIME	2	1	1	100.00%
MALICIOUS / NUISANCE COMMS	15	20	-5	-25.00%
NEIGHBOURS	46	50	-4	-8.00%
NOISE	6	6	0	0.00%
PROSTITUTION RELATED ACTIVITY		1	-1	-100.00%
ROWDY OR INCONSIDERATE BEHAV	84	84	0	0.00%
TRESPASS	4		4	-100.00%
VEHICLE NUIS & INAPPROP VEH US	48	42	6	14.29%
Sum:	208	210	-2	-0.95%

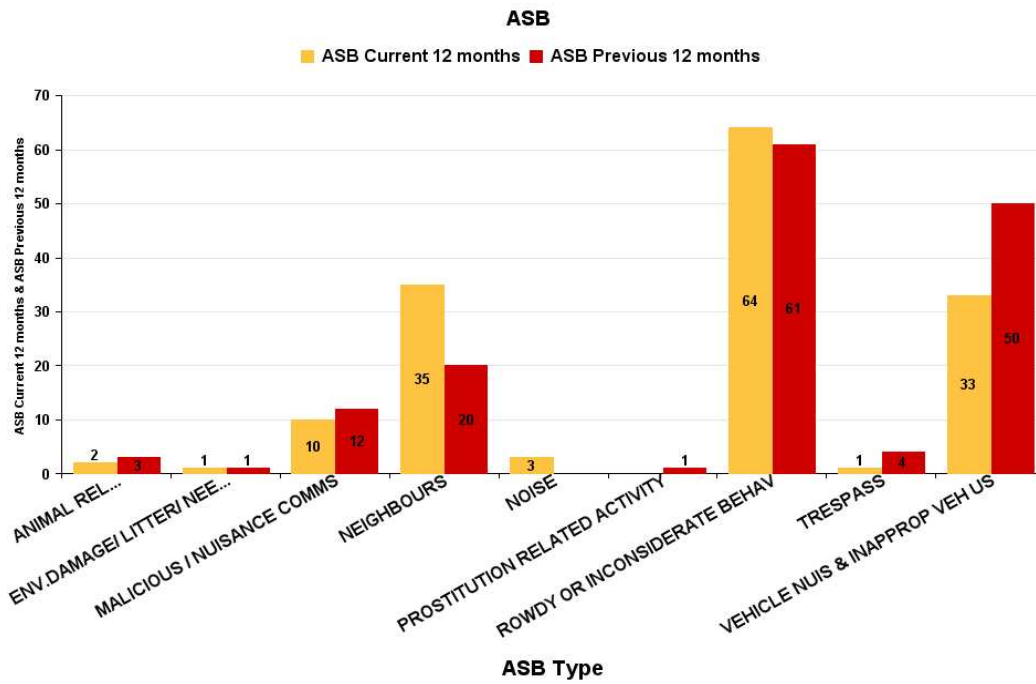
ASB

■ ASB Current 12 months ■ ASB Previous 12 months



Desborough Loatland

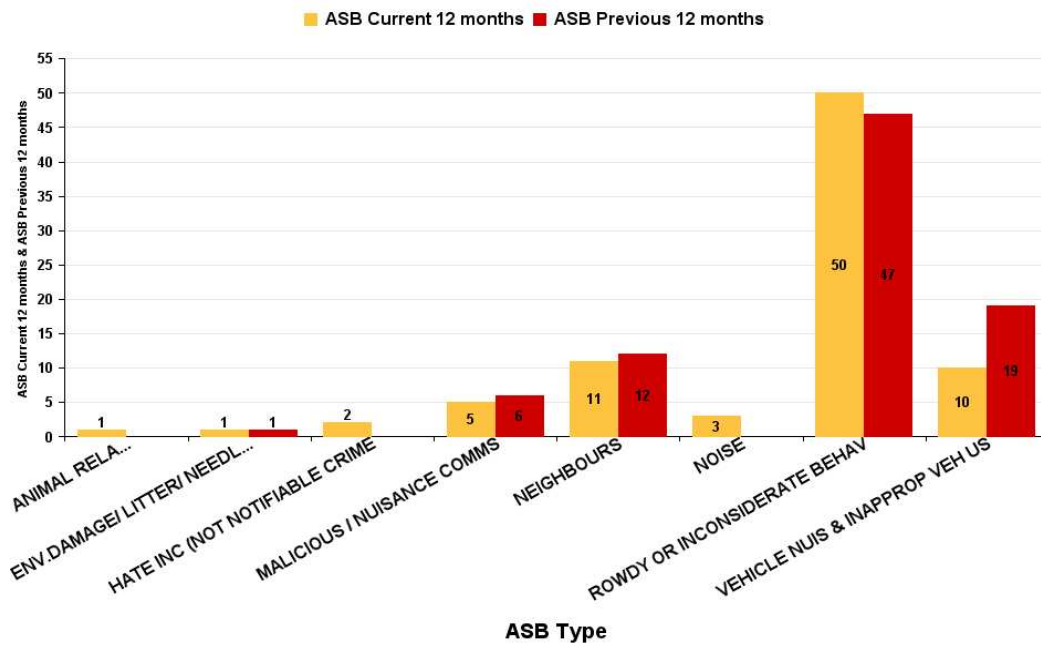
ASB Type	Current 12 mths	Previous 12 mths	+/- Crime	% Change
ANIMAL RELATED INC ANTI-SOCIAL	2	3	-1	-33.33%
ENV.DAMAGE/ LITTER/ NEEDLES	1	1	0	0.00%
MALICIOUS / NUISANCE COMMS	10	12	-2	-16.67%
NEIGHBOURS	35	20	15	75.00%
NOISE	3		3	-100.00%
PROSTITUTION RELATED ACTIVITY		1	-1	-100.00%
ROWDY OR INCONSIDERATE BEHAV	64	61	3	4.92%
TRESPASS	1	4	-3	-75.00%
VEHICLE NUIS & INAPPROP VEH US	33	50	-17	-34.00%
Sum:	149	152	-3	-1.97%



Desborough St Giles

ASB Type	Current 12 mths	Previous 12 mths	+/- Crime	% Change
ANIMAL RELATED INC ANTI-SOCIAL	1		1	-100.00%
ENV.DAMAGE/ LITTER/ NEEDLES	1	1	0	0.00%
HATE INC (NOT NOTIFIABLE CRIME	2		2	-100.00%
MALICIOUS / NUISANCE COMMS	5	6	-1	-16.67%
NEIGHBOURS	11	12	-1	-8.33%
NOISE	3		3	-100.00%
ROWDY OR INCONSIDERATE BEHAV	50	47	3	6.38%
VEHICLE NUIS & INAPPROP VEH US	10	19	-9	-47.37%
Sum:	83	85	-2	-2.35%

ASB



Rothwell

ASB Type	Current 12 mths	Previous 12 mths	+/- Crime	% Change
ANIMAL RELATED INC ANTI-SOCIAL		6	-6	-100.00%
BEGGING / VAGRANCY	1	1	0	0.00%
ENV.DAMAGE/ LITTER/ NEEDLES	1	7	-6	-85.71%
HATE INC (NOT NOTIFIABLE CRIME	1		1	-100.00%
MALICIOUS / NUISANCE COMMS	11	16	-5	-31.25%
NEIGHBOURS	29	37	-8	-21.62%
NOISE	6	5	1	20.00%
ROWDY OR INCONSIDERATE BEHAV	134	128	6	4.69%
TRESPASS	2		2	-100.00%
VEHICLE NUIS & INAPPROP VEH US	30	58	-28	-48.28%
Sum:	215	258	-43	-16.67%

ASB

■ ASB Current 12 months ■ ASB Previous 12 months

