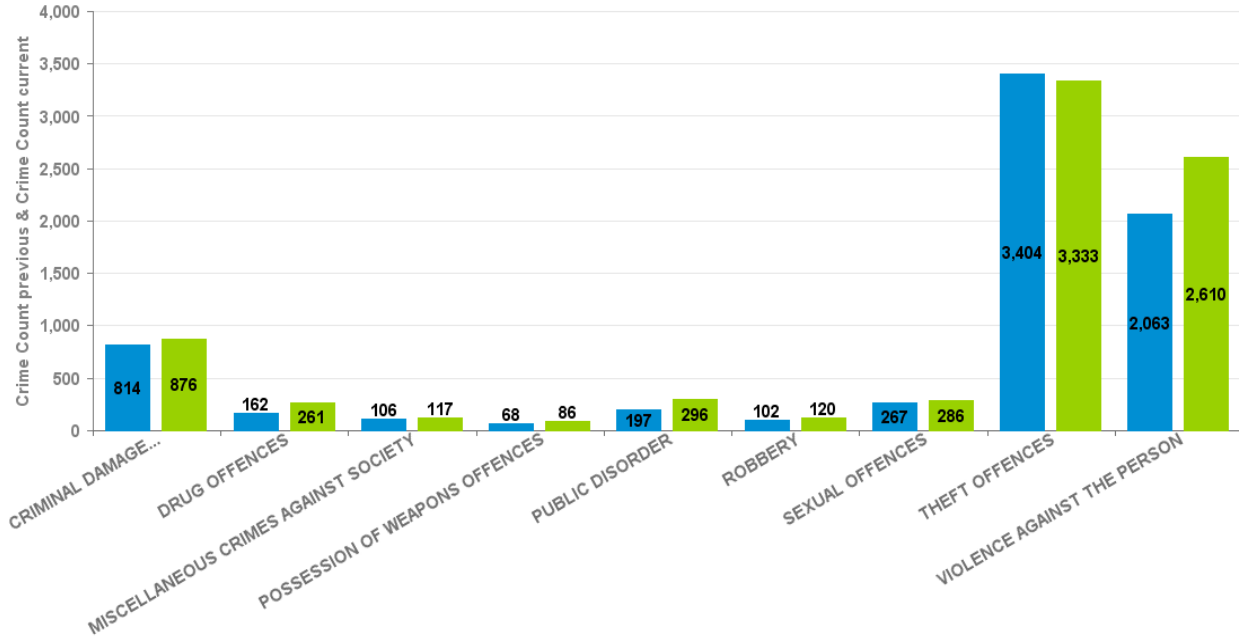


KETTERING BOROUGH

Crime Group	% of Current 12mths Crime Against All Crime	Current 12 mths	Previous 12 mths	+/- Crime	% Change	Number of resolved Crimes	Resolved Rate (past 12mths)
CRIMINAL DAMAGE & ARSON	10.97%	876	814	62	7.62%	114	13.01%
DRUG OFFENCES	3.27%	261	162	99	61.11%	198	75.86%
MISCELLANEOUS CRIMES AGAINST SOCIETY	1.47%	117	106	11	10.38%	11	9.40%
POSSESSION OF WEAPONS OFFENCES	1.08%	86	68	18	26.47%	38	44.19%
PUBLIC DISORDER	3.71%	296	197	99	50.25%	89	30.07%
ROBBERY	1.50%	120	102	18	17.65%	21	17.50%
SEXUAL OFFENCES	3.58%	286	267	19	7.12%	27	9.44%
THEFT OFFENCES	41.74%	3333	3404	-71	-2.09%	271	8.13%
VIOLENCE AGAINST THE PERSON	32.69%	2610	2063	547	26.51%	420	16.09%
				0	-100.00%	3	
Sum:	100.00%	7985	7183	802	11.17%	1192	

All Crime

■ Crime Count previous ■ Crime Count current



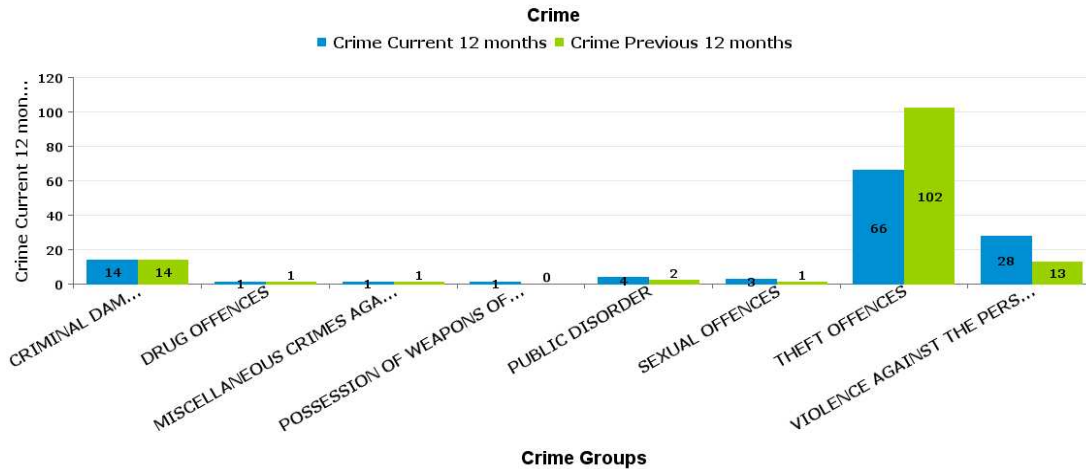
Crime Tree LV2 Desc

Crime Reports by CSP Sector and Ward

KETTERING RURAL

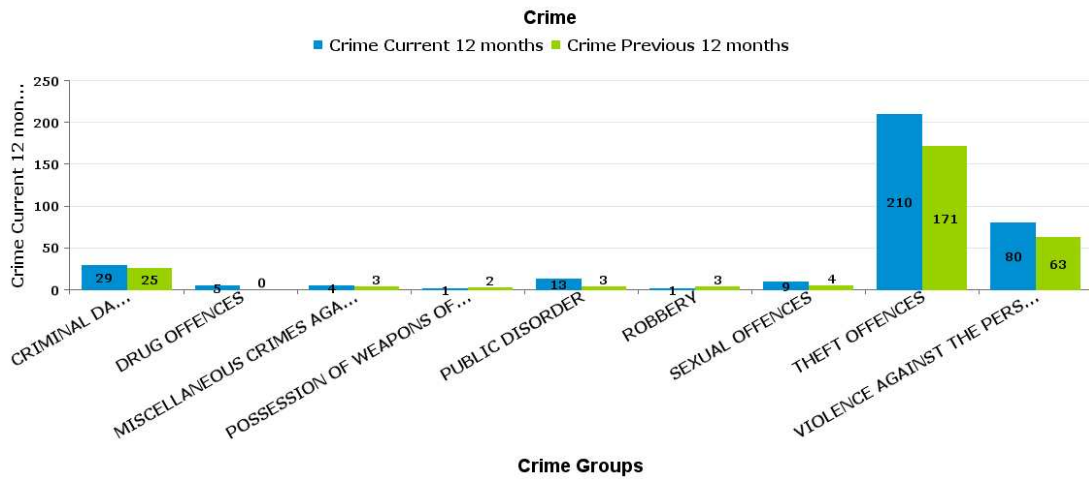
QUEEN ELEANOR AND BUCCLEUCH

Crime Group	% of Current 12mths Crime Against All Crime	Current 12 mths	Previous 12 mths	+/- Crime	% Change	Number of resolved Crimes	Resolved Rate (past 12mths)
CRIMINAL DAMAGE & ARSON	11.86%	14	14	0	0.00%		
DRUG OFFENCES	0.85%	1	1	0	0.00%	1	100.00%
MISCELLANEOUS CRIMES AGAINST SOCIETY	0.85%	1	1	0	0.00%		
POSSESSION OF WEAPONS OFFENCES	0.85%	1	0	1	-100.00%		
PUBLIC DISORDER	3.39%	4	2	2	100.00%	1	25.00%
ROBBERY		0	0	0	-100.00%	1	
SEXUAL OFFENCES	2.54%	3	1	2	200.00%		
THEFT OFFENCES	55.93%	66	102	-36	-35.29%	3	4.55%
VIOLENCE AGAINST THE PERSON	23.73%	28	13	15	115.38%	7	25.00%
Sum:	100.00%	118	134	-16	-11.94%	13	



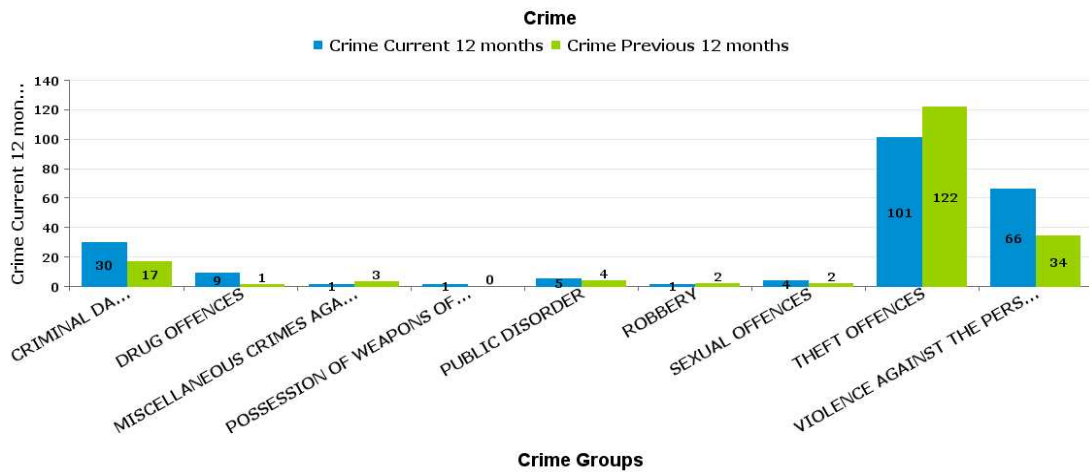
SLADE

Crime Group	% of Current 12mths Crime Against All Crime	Current 12 mths	Previous 12 mths	+/- Crime	% Change	Number of resolved Crimes	Resolved Rate (past 12mths)
CRIMINAL DAMAGE & ARSON	8.24%	29	25	4	16.00%	3	10.34%
DRUG OFFENCES	1.42%	5	0	5	-100.00%	2	40.00%
MISCELLANEOUS CRIMES AGAINST SOCIETY	1.14%	4	3	1	33.33%	1	25.00%
POSSESSION OF WEAPONS OFFENCES	0.28%	1	2	-1	-50.00%		
PUBLIC DISORDER	3.69%	13	3	10	333.33%	9	69.23%
ROBBERY	0.28%	1	3	-2	-66.67%		
SEXUAL OFFENCES	2.56%	9	4	5	125.00%	1	11.11%
THEFT OFFENCES	59.66%	210	171	39	22.81%	4	1.90%
VIOLENCE AGAINST THE PERSON	22.73%	80	63	17	26.98%	8	10.00%
Sum:	100.00%	352	274	78	28.47%	28	



WELLAND

Crime Group	% of Current 12mths Crime Against All Crime	Current 12 mths	Previous 12 mths	+/- Crime	% Change	Number of resolved Crimes	Resolved Rate (past 12mths)
CRIMINAL DAMAGE & ARSON	13.76%	30	17	13	76.47%	13	43.33%
DRUG OFFENCES	4.13%	9	1	8	800.00%	17	188.89%
MISCELLANEOUS CRIMES AGAINST SOCIETY	0.46%	1	3	-2	-66.67%	1	100.00%
POSSESSION OF WEAPONS OFFENCES	0.46%	1	0	1	-100.00%	2	200.00%
PUBLIC DISORDER	2.29%	5	4	1	25.00%	4	80.00%
ROBBERY	0.46%	1	2	-1	-50.00%	3	300.00%
SEXUAL OFFENCES	1.83%	4	2	2	100.00%	4	100.00%
THEFT OFFENCES	46.33%	101	122	-21	-17.21%	12	11.88%
VIOLENCE AGAINST THE PERSON	30.28%	66	34	32	94.12%	37	56.06%
		0	0	0	-100.00%	2	
Sum:	100.00%	218	185	33	17.84%	95	



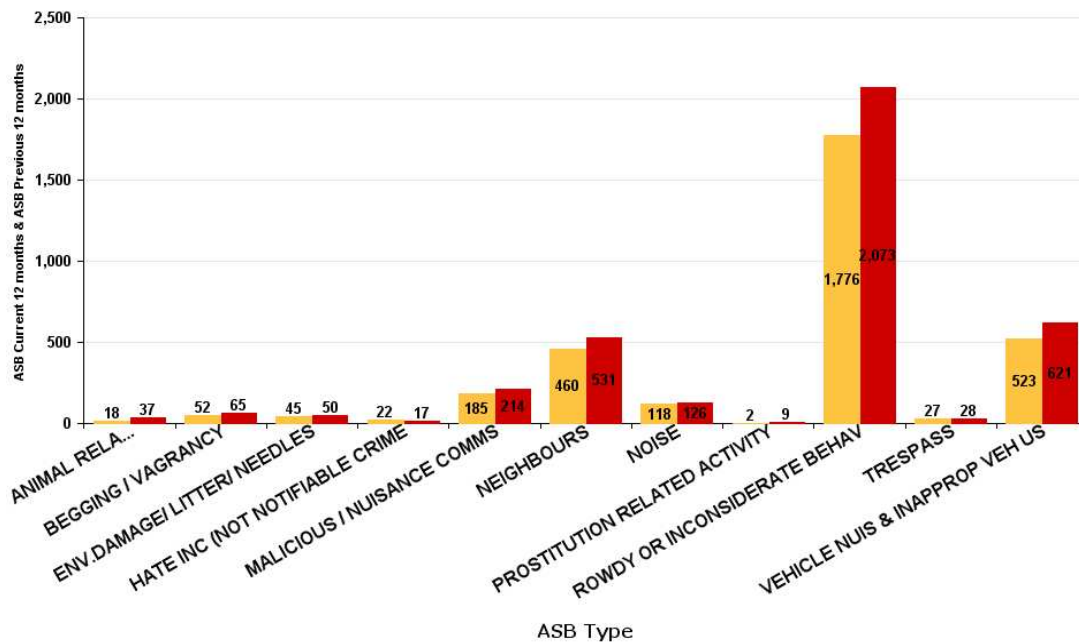
ASB Reports by CSP Sector and Ward

KETTERING BOROUGH ASB

ASB Type	Current 12 mths	Previous 12 mths	+/- Crime	% Change
ANIMAL RELATED INC ANTI-SOCIAL	18	37	-19	-51.35%
BEGGING / VAGRANCY	52	65	-13	-20.00%
ENV.DAMAGE/ LITTER/ NEEDLES	45	50	-5	-10.00%
HATE INC (NOT NOTIFIABLE CRIME)	22	17	5	29.41%
MALICIOUS / NUISANCE COMMS	185	214	-29	-13.55%
NEIGHBOURS	460	531	-71	-13.37%
NOISE	118	126	-8	-6.35%
PROSTITUTION RELATED ACTIVITY	2	9	-7	-77.78%
ROWDY OR INCONSIDERATE BEHAV	1776	2073	-297	-14.33%
TRESPASS	27	28	-1	-3.57%
VEHICLE NUIS & INAPPROP VEH US	523	621	-98	-15.78%
Sum:	3228	3771	-543	-14.40%

ASB

ASB Current 12 months ASB Previous 12 months

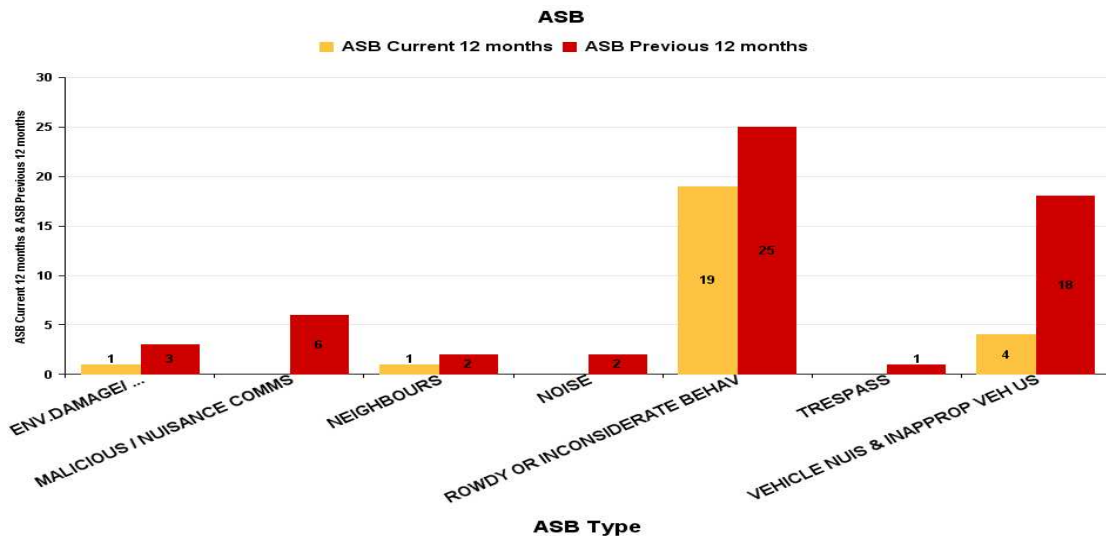


ASB Reports by CSP Sector and Ward

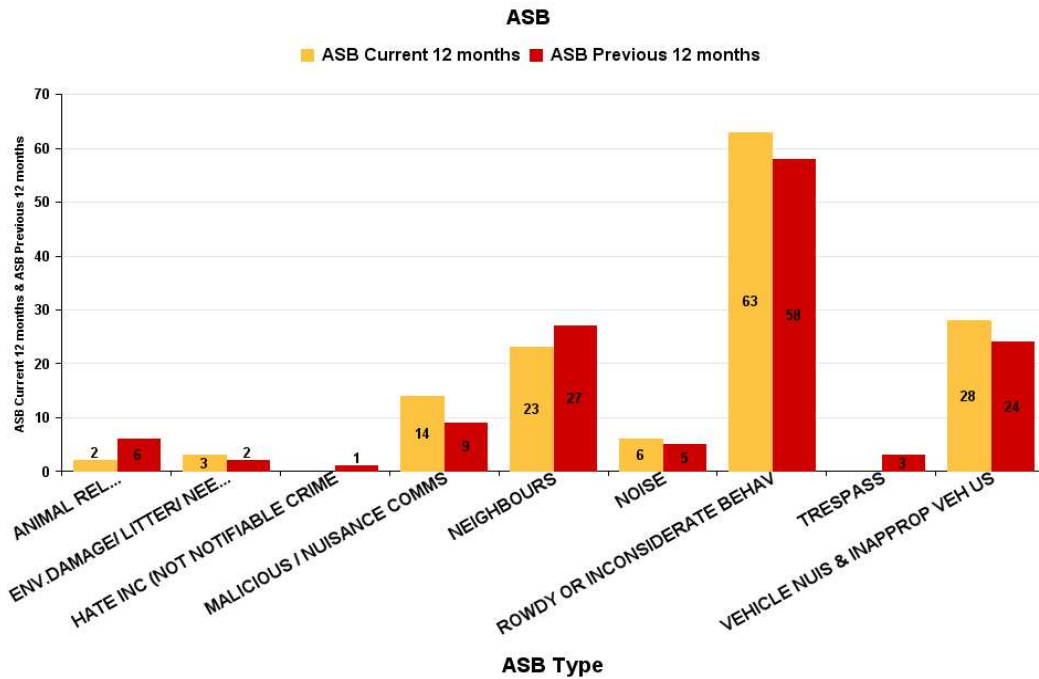
KETTERING RURAL

Queen Eleanor and Buccleuch

ASB Type	Current 12 Months 2018-01 2018-12	Previous 12 Months 2017-01 2017-12	+/- Crime	% Change
ENV.DAMAGE/ LITTER/ NEEDLES	1	3	-2	-66.67%
MALICIOUS / NUISANCE COMMS		6	-6	-100.00%
NEIGHBOURS	1	2	-1	-50.00%
NOISE		2	-2	-100.00%
ROWDY OR INCONSIDERATE BEHAV	19	25	-6	-24.00%
TRESPASS		1	-1	-100.00%
VEHICLE NUIS & INAPPROP VEH US	4	18	-14	-77.78%
Sum:	25	57	-32	-56.14%



ASB Type	Current 12 Months 2018-01 2018-12	Previous 12 Months 2017-01 2017-12	+/- Crime	% Change
ANIMAL RELATED INC ANTI-SOCIAL	2	6	-4	-66.67%
ENV.DAMAGE/ LITTER/ NEEDLES	3	2	1	50.00%
HATE INC (NOT NOTIFIABLE CRIME		1	-1	-100.00%
MALICIOUS / NUISANCE COMMS	14	9	5	55.56%
NEIGHBOURS	23	27	-4	-14.81%
NOISE	6	5	1	20.00%
ROWDY OR INCONSIDERATE BEHAV	63	58	5	8.62%
TRESPASS		3	-3	-100.00%
VEHICLE NUIS & INAPPROP VEH US	28	24	4	16.67%
Sum:	139	135	4	2.96%



Welland

ASB Type	Current 12 Months 2018-01 2018-11	Previous 12 Months 2017-01 2017-12	+/- Crime	% Change
ANIMAL RELATED INC ANTI-SOCIAL	1	4	-3	-75.00%
ENV.DAMAGE/ LITTER/ NEEDLES	2	1	1	100.00%
MALICIOUS / NUISANCE COMMS	2	3	-1	-33.33%
NEIGHBOURS		3	-3	-100.00%
NOISE	1		1	-100.00%
ROWDY OR INCONSIDERATE BEHAV	14	14	0	0.00%
TRESPASS	1	1	0	0.00%
VEHICLE NUIS & INAPPROP VEH US	12	17	-5	-29.41%
Sum:	33	43	-10	-23.26%

