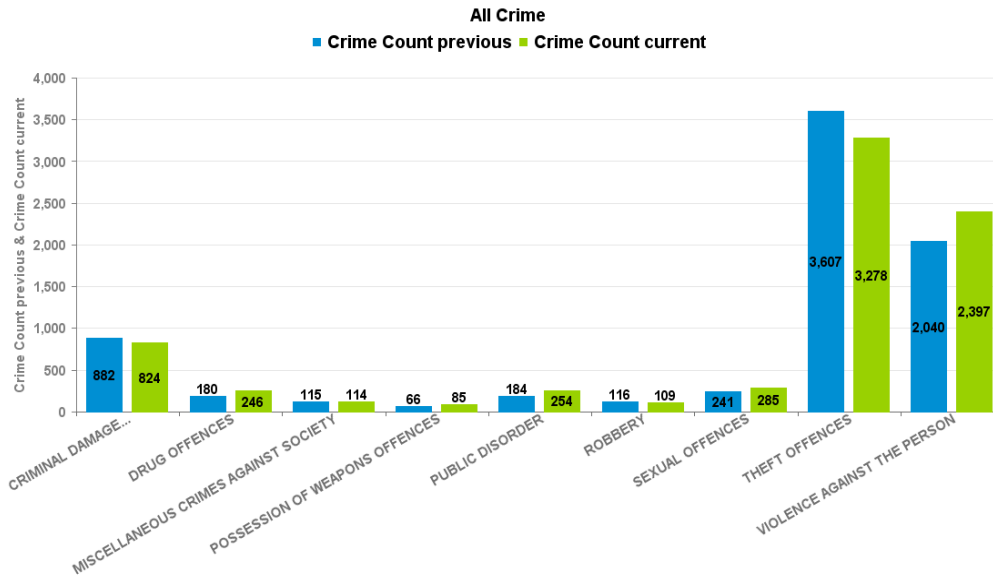


KETTERING BOROUGH

Current 12 Months 2017-09 2018-08

Previous 12 Months 2016-09 2017-08

Crime Group	Current 12 mths	Previous 12 mths	+/- Crime	% Change	Number of resolved Crimes	Resolved Rate (past 12mths)
CRIMINAL DAMAGE & ARSON	824	882	-58	-6.58%	115	13.96%
DRUG OFFENCES	246	180	66	36.67%	171	69.51%
MISCELLANEOUS CRIMES AGAINST SOCIETY	114	115	-1	-0.87%	23	20.18%
POSSESSION OF WEAPONS OFFENCES	85	66	19	28.79%	36	42.35%
PUBLIC DISORDER	254	184	70	38.04%	76	29.92%
ROBBERY	109	116	-7	-6.03%	28	25.69%
SEXUAL OFFENCES	285	241	44	18.26%	30	10.53%
THEFT OFFENCES	3278	3607	-329	-9.12%	323	9.85%
VIOLENCE AGAINST THE PERSON	2397	2040	357	17.50%	467	19.48%



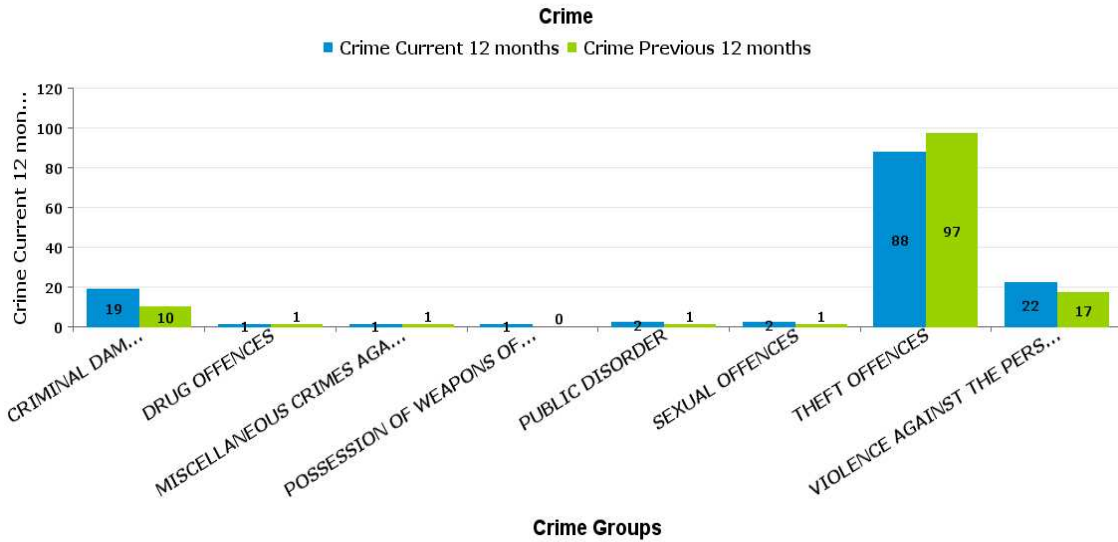
Crime Tree LV2 Desc

Crime Reports by CSP Sector and Ward

KETTERING RURAL

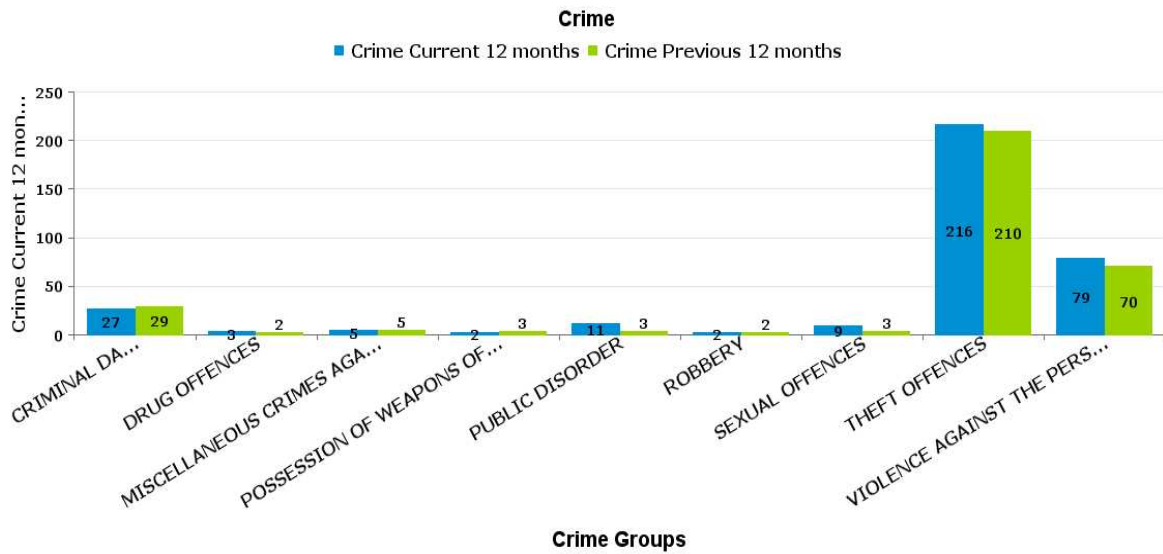
QUEEN ELEANOR AND BUCCLEUCH

Crime Group	Current 12 mths	Previous 12 mths	+/- Crime	% Change	Number of resolved Crimes	Resolved Rate (past 12mths)
CRIMINAL DAMAGE & ARSON	19	10	9	90.00%	1	5.26%
DRUG OFFENCES	1	1	0	0.00%		
MISCELLANEOUS CRIMES AGAINST SOCIETY	1	1	0	0.00%		
POSSESSION OF WEAPONS OFFENCES	1	0	1	-100.00%		
PUBLIC DISORDER	2	1	1	100.00%		
ROBBERY	0	0	0	-100.00%	1	
SEXUAL OFFENCES	2	1	1	100.00%		
THEFT OFFENCES	88	97	-9	-9.28%	3	3.41%
VIOLENCE AGAINST THE PERSON	22	17	5	29.41%	8	36.36%



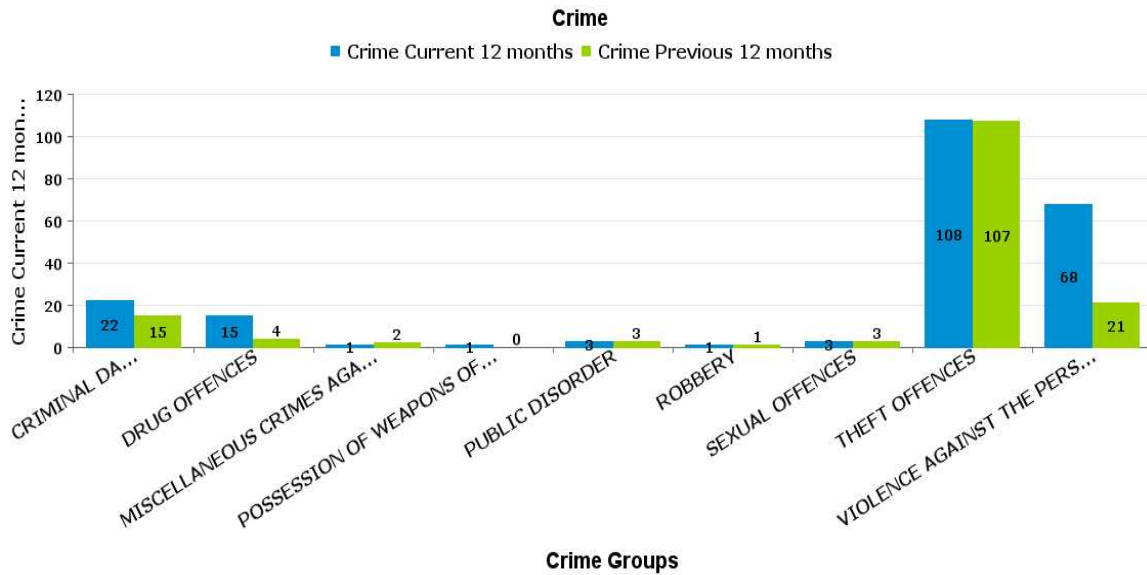
SLADE

Crime Group	Current 12 mths	Previous 12 mths	+/- Crime	% Change	Number of resolved Crimes	Resolved Rate (past 12mths)
CRIMINAL DAMAGE & ARSON	27	29	-2	-6.90%	4	14.81%
DRUG OFFENCES	3	2	1	50.00%	2	66.67%
MISCELLANEOUS CRIMES AGAINST SOCIETY	5	5	0	0.00%		
POSSESSION OF WEAPONS OFFENCES	2	3	-1	-33.33%	1	50.00%
PUBLIC DISORDER	11	3	8	266.67%	7	63.64%
ROBBERY	2	2	0	0.00%		
SEXUAL OFFENCES	9	3	6	200.00%	1	11.11%
THEFT OFFENCES	216	210	6	2.86%	10	4.63%
VIOLENCE AGAINST THE PERSON	79	70	9	12.86%	9	11.39%



WELLAND

Crime Group	Current 12 mths	Previous 12 mths	+/- Crime	% Change	Number of resolved Crimes	Resolved Rate (past 12mths)
CRIMINAL DAMAGE & ARSON	22	15	7	46.67%	10	45.45%
DRUG OFFENCES	15	4	11	275.00%	19	126.67%
MISCELLANEOUS CRIMES AGAINST SOCIETY	1	2	-1	-50.00%	2	200.00%
POSSESSION OF WEAPONS OFFENCES	1	0	1	-100.00%	3	300.00%
PUBLIC DISORDER	3	3	0	0.00%	5	166.67%
ROBBERY	1	1	0	0.00%	2	200.00%
SEXUAL OFFENCES	3	3	0	0.00%	6	200.00%
THEFT OFFENCES	108	107	1	0.93%	11	10.19%
VIOLENCE AGAINST THE PERSON	68	21	47	223.81%	44	64.71%



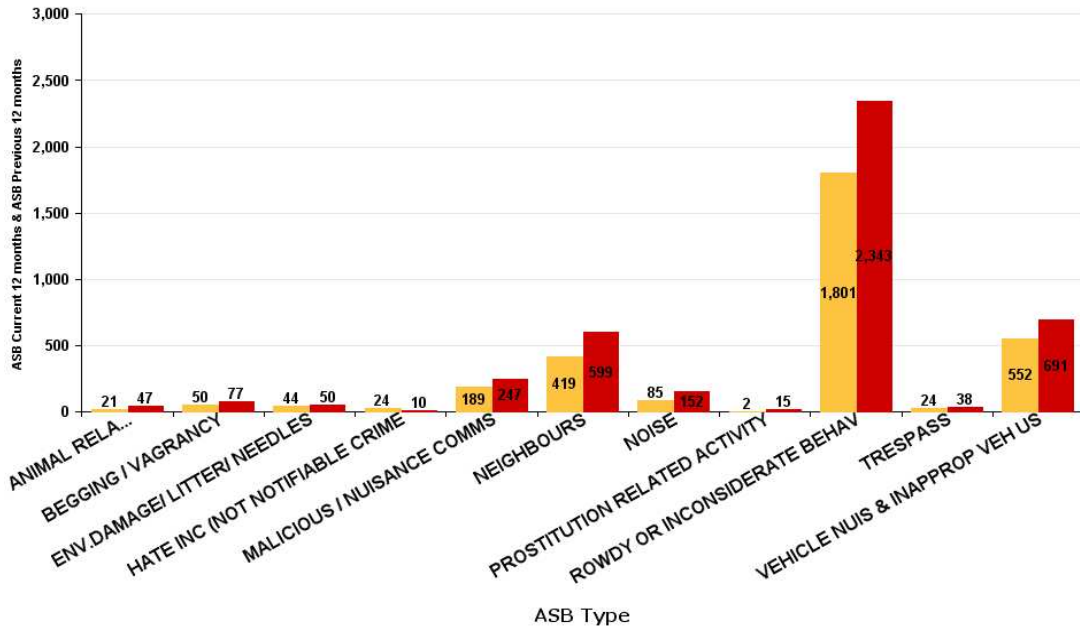
ASB Reports by CSP Sector and Ward

KETTERING BOROUGH ASB

ASB Type	Current 12 mths	Previous 12 mths	+/- Crime	% Change
ANIMAL RELATED INC ANTI-SOCIAL	21	47	-26	-55.32%
BEGGING / VAGRANCY	50	77	-27	-35.06%
ENV.DAMAGE/ LITTER/ NEEDLES	44	50	-6	-12.00%
HATE INC (NOT NOTIFIABLE CRIME)	24	10	14	140.00%
MALICIOUS / NUISANCE COMMS	189	247	-58	-23.48%
NEIGHBOURS	419	599	-180	-30.05%
NOISE	85	152	-67	-44.08%
PROSTITUTION RELATED ACTIVITY	2	15	-13	-86.67%
ROWDY OR INCONSIDERATE BEHAV	1801	2343	-542	-23.13%
TRESPASS	24	38	-14	-36.84%
VEHICLE NUIS & INAPPROP VEH US	552	691	-139	-20.12%
Sum:	3211	4269	-1058	-24.78%

ASB

ASB Current 12 months ASB Previous 12 months



ASB Reports by CSP Sector and Ward

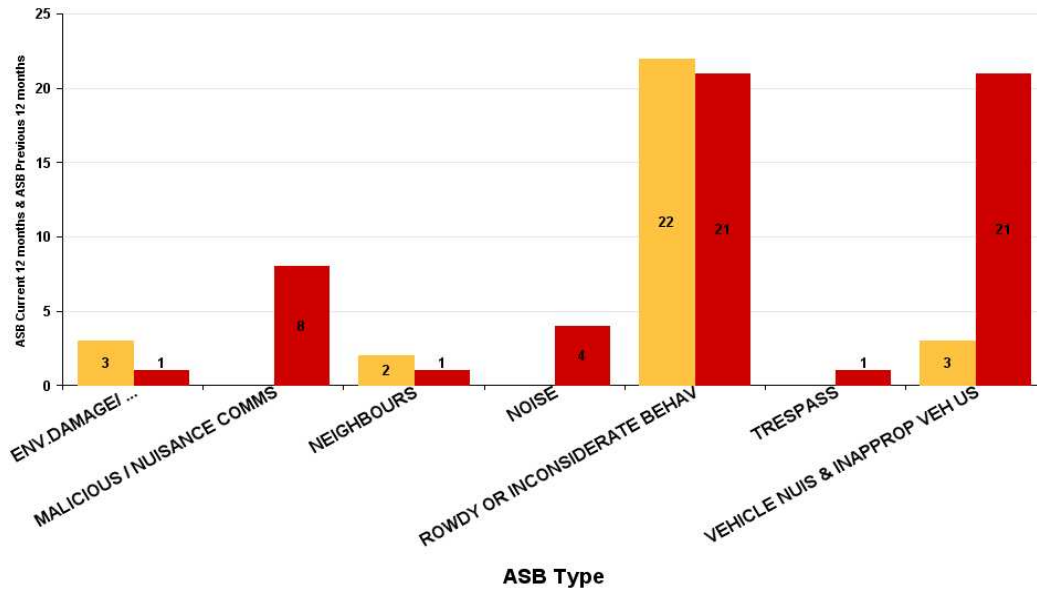
KETTERING RURAL ASB

Queen Eleanor and Buccleuch

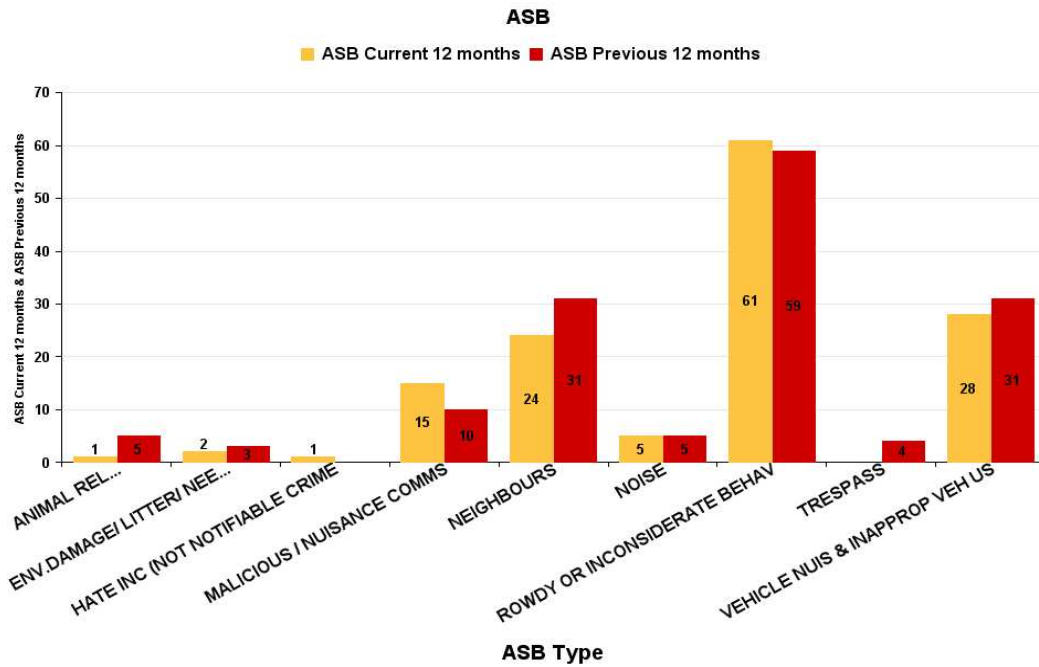
ASB Type	Current 12 Months 2017-09 2018-08	Previous 12 Months 2016-09 2017-08	+/- Crime	% Change
ENV.DAMAGE/ LITTER/ NEEDLES	3	1	2	200.00%
MALICIOUS / NUISANCE COMMS		8	-8	-100.00%
NEIGHBOURS	2	1	1	100.00%
NOISE		4	-4	-100.00%
ROWDY OR INCONSIDERATE BEHAV	22	21	1	4.76%
TRESPASS		1	-1	-100.00%
VEHICLE NUIS & INAPPROP VEH US	3	21	-18	-85.71%
Sum:	30	57	-27	-47.37%

ASB

■ ASB Current 12 months ■ ASB Previous 12 months



ASB Type	Current 12 Months 2017-09 2018-08	Previous 12 Months 2016-09 2017-08	+/- Crime	% Change
ANIMAL RELATED INC ANTI-SOCIAL	1	5	-4	-80.00%
ENV.DAMAGE/ LITTER/ NEEDLES	2	3	-1	-33.33%
HATE INC (NOT NOTIFIABLE CRIME	1		1	-100.00%
MALICIOUS / NUISANCE COMMS	15	10	5	50.00%
NEIGHBOURS	24	31	-7	-22.58%
NOISE	5	5	0	0.00%
ROWDY OR INCONSIDERATE BEHAV	61	59	2	3.39%
TRESPASS		4	-4	-100.00%
VEHICLE NUIS & INAPPROP VEH US	28	31	-3	-9.68%
Sum:	137	148	-11	-7.43%



Welland

ASB Type	Current 12 Months 2017-09 2018-08	Previous 12 Months 2016-09 2017-08	+/- Crime	% Change
ANIMAL RELATED INC ANTI-SOCIAL	1	5	-4	-80.00%
ENV.DAMAGE/ LITTER/ NEEDLES		2	-2	-100.00%
MALICIOUS / NUISANCE COMMS	2	6	-4	-66.67%
NEIGHBOURS		6	-6	-100.00%
ROWDY OR INCONSIDERATE BEHAV	20	11	9	81.82%
TRESPASS		2	-2	-100.00%
VEHICLE NUIS & INAPPROP VEH US	14	23	-9	-39.13%
Sum:	37	55	-18	-32.73%

ASB

ASB Current 12 months ASB Previous 12 months

