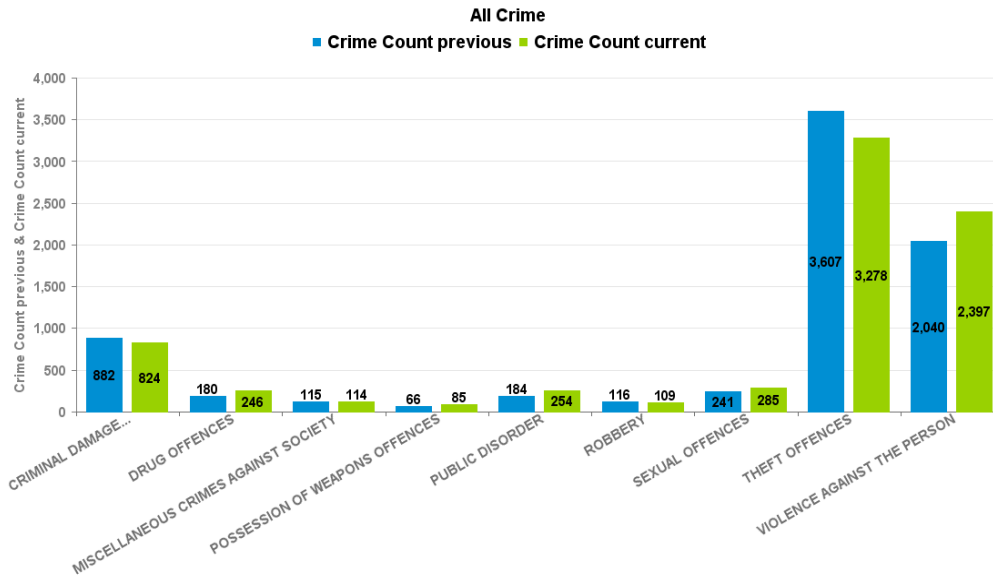


# KETTERING BOROUGH

Current 12 Months 2017-09 2018-08

Previous 12 Months 2016-09 2017-08

Crime Group	Current 12 mths	Previous 12 mths	+/- Crime	% Change	Number of resolved Crimes	Resolved Rate (past 12mths)
CRIMINAL DAMAGE & ARSON	824	882	-58	-6.58%	115	13.96%
DRUG OFFENCES	246	180	66	36.67%	171	69.51%
MISCELLANEOUS CRIMES AGAINST SOCIETY	114	115	-1	-0.87%	23	20.18%
POSSESSION OF WEAPONS OFFENCES	85	66	19	28.79%	36	42.35%
PUBLIC DISORDER	254	184	70	38.04%	76	29.92%
ROBBERY	109	116	-7	-6.03%	28	25.69%
SEXUAL OFFENCES	285	241	44	18.26%	30	10.53%
THEFT OFFENCES	3278	3607	-329	-9.12%	323	9.85%
VIOLENCE AGAINST THE PERSON	2397	2040	357	17.50%	467	19.48%



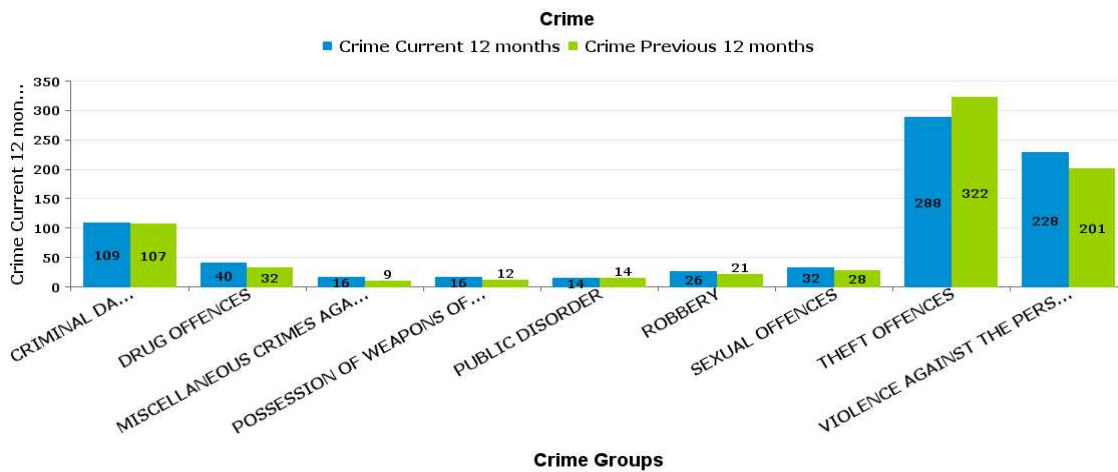
Crime Tree LV2 Desc

Crime Reports by CSP Sector and Ward

**KETTERING TOWN**

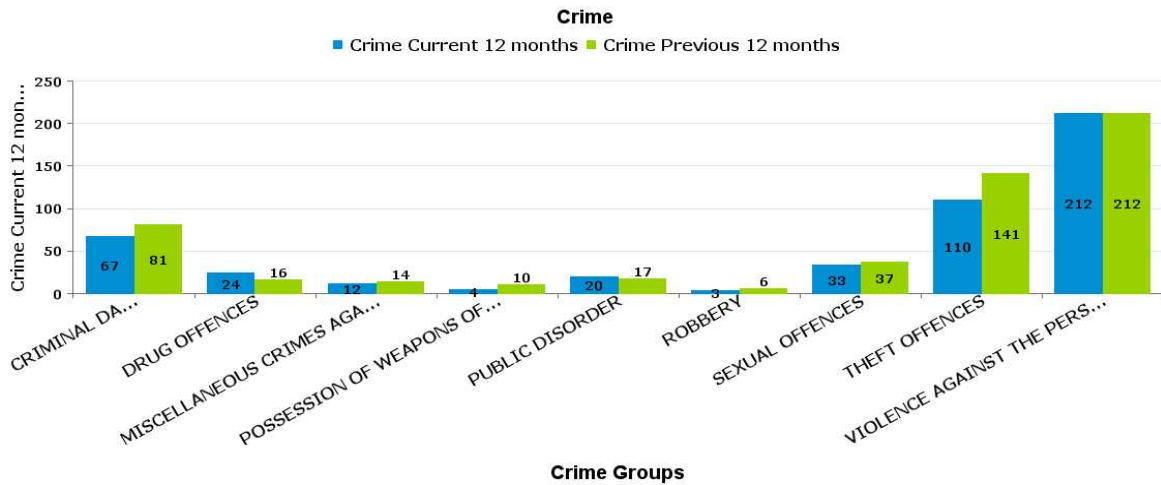
**ALL SAINTS**

Crime Group	Current 12 mths	Previous 12 mths	+/- Crime	% Change	Number of resolved Crimes	Resolved Rate (past 12mths)
CRIMINAL DAMAGE & ARSON	109	107	2	1.87%	10	9.17%
DRUG OFFENCES	40	32	8	25.00%	29	72.50%
MISCELLANEOUS CRIMES AGAINST SOCIETY	16	9	7	77.78%	1	6.25%
POSSESSION OF WEAPONS OFFENCES	16	12	4	33.33%	9	56.25%
PUBLIC DISORDER	14	14	0	0.00%	6	42.86%
ROBBERY	26	21	5	23.81%	6	23.08%
SEXUAL OFFENCES	32	28	4	14.29%	5	15.63%
THEFT OFFENCES	288	322	-34	-10.56%	26	9.03%
VIOLENCE AGAINST THE PERSON	228	201	27	13.43%	41	17.98%



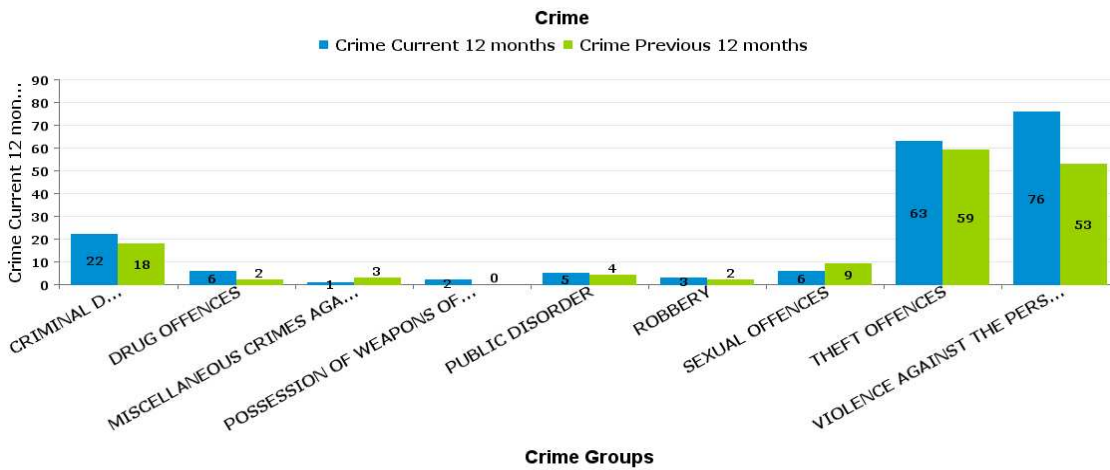
**AVONDALE GRANGE**

Crime Group	Current 12 mths	Previous 12 mths	+/- Crime	% Change	Number of resolved Crimes	Resolved Rate (past 12mths)
CRIMINAL DAMAGE & ARSON	67	81	-14	-17.28%	8	11.94%
DRUG OFFENCES	24	16	8	50.00%	15	62.50%
MISCELLANEOUS CRIMES AGAINST SOCIETY	12	14	-2	-14.29%	2	16.67%
POSSESSION OF WEAPONS OFFENCES	4	10	-6	-60.00%	2	50.00%
PUBLIC DISORDER	20	17	3	17.65%	4	20.00%
ROBBERY	3	6	-3	-50.00%	1	33.33%
SEXUAL OFFENCES	33	37	-4	-10.81%	2	6.06%
THEFT OFFENCES	110	141	-31	-21.99%	13	11.82%
VIOLENCE AGAINST THE PERSON	212	212	0	0.00%	32	15.09%



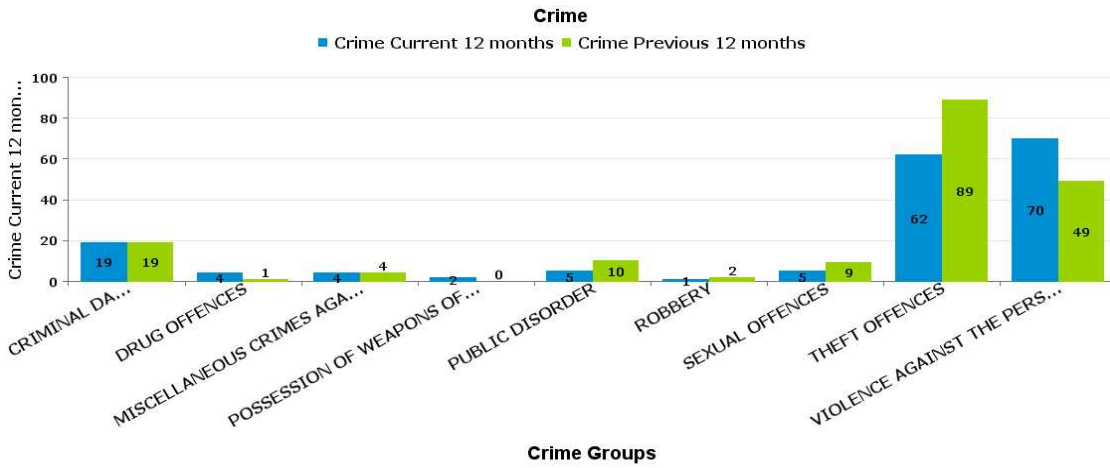
**BRAMBLESIDE**

Crime Group	Current 12 mths	Previous 12 mths	+/- Crime	% Change	Number of resolved Crimes	Resolved Rate (past 12mths)
CRIMINAL DAMAGE & ARSON	22	18	4	22.22%	1	4.55%
DRUG OFFENCES	6	2	4	200.00%	5	83.33%
MISCELLANEOUS CRIMES AGAINST SOCIETY	1	3	-2	-66.67%		
POSSESSION OF WEAPONS OFFENCES	2	0	2	-100.00%	1	50.00%
PUBLIC DISORDER	5	4	1	25.00%		
ROBBERY	3	2	1	50.00%	1	33.33%
SEXUAL OFFENCES	6	9	-3	-33.33%	1	16.67%
THEFT OFFENCES	63	59	4	6.78%		
VIOLENCE AGAINST THE PERSON	76	53	23	43.40%	16	21.05%



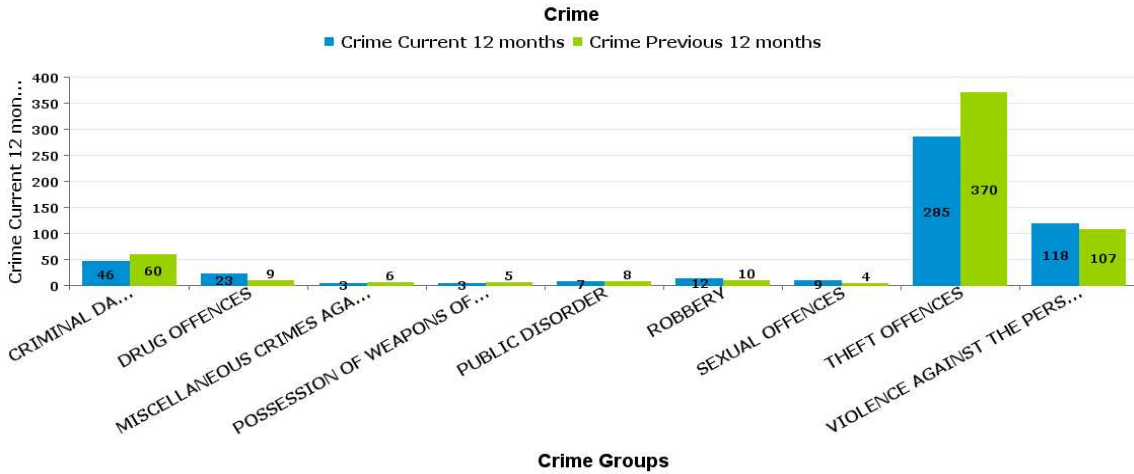
**ISE LODGE**

Crime Group	Current 12 mths	Previous 12 mths	+/- Crime	% Change	Number of resolved Crimes	Resolved Rate (past 12mths)
CRIMINAL DAMAGE & ARSON	19	19	0	0.00%	5	26.32%
DRUG OFFENCES	4	1	3	300.00%	2	50.00%
MISCELLANEOUS CRIMES AGAINST SOCIETY	4	4	0	0.00%	2	50.00%
POSSESSION OF WEAPONS OFFENCES	2	0	2	-100.00%	1	50.00%
PUBLIC DISORDER	5	10	-5	-50.00%	3	60.00%
ROBBERY	1	2	-1	-50.00%		
SEXUAL OFFENCES	5	9	-4	-44.44%		
THEFT OFFENCES	62	89	-27	-30.34%	14	22.58%
VIOLENCE AGAINST THE PERSON	70	49	21	42.86%	22	31.43%



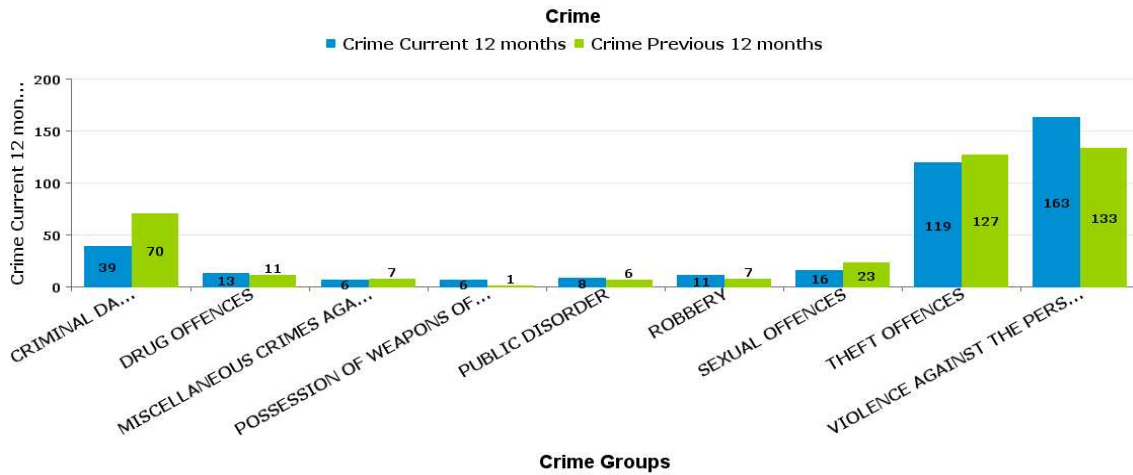
**NORTHFIELD**

Crime Group	Current 12 mths	Previous 12 mths	+/- Crime	% Change	Number of resolved Crimes	Resolved Rate (past 12mths)
CRIMINAL DAMAGE & ARSON	46	60	-14	-23.33%	7	15.22%
DRUG OFFENCES	23	9	14	155.56%	15	65.22%
MISCELLANEOUS CRIMES AGAINST SOCIETY	3	6	-3	-50.00%	1	33.33%
POSSESSION OF WEAPONS OFFENCES	3	5	-2	-40.00%	2	66.67%
PUBLIC DISORDER	7	8	-1	-12.50%	1	14.29%
ROBBERY	12	10	2	20.00%	4	33.33%
SEXUAL OFFENCES	9	4	5	125.00%		
THEFT OFFENCES	285	370	-85	-22.97%	41	14.39%
VIOLENCE AGAINST THE PERSON	118	107	11	10.28%	35	29.66%



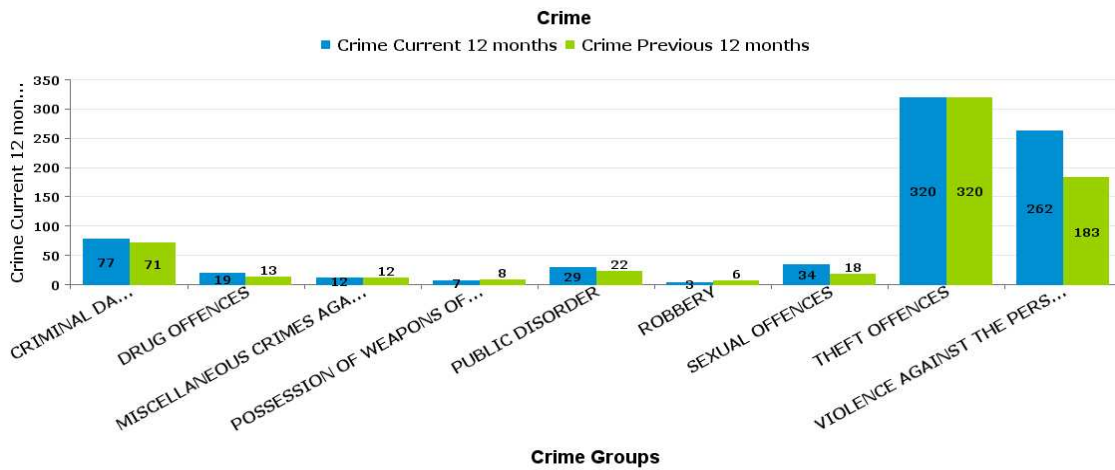
**PIPERS HILL**

Crime Group	Current 12 mths	Previous 12 mths	+/- Crime	% Change	Number of resolved Crimes	Resolved Rate (past 12mths)
CRIMINAL DAMAGE & ARSON	39	70	-31	-44.29%	6	15.38%
DRUG OFFENCES	13	11	2	18.18%	8	61.54%
MISCELLANEOUS CRIMES AGAINST SOCIETY	6	7	-1	-14.29%	2	33.33%
POSSESSION OF WEAPONS OFFENCES	6	1	5	500.00%	2	33.33%
PUBLIC DISORDER	8	6	2	33.33%	2	25.00%
ROBBERY	11	7	4	57.14%	4	36.36%
SEXUAL OFFENCES	16	23	-7	-30.43%	1	6.25%
THEFT OFFENCES	119	127	-8	-6.30%	12	10.08%
VIOLENCE AGAINST THE PERSON	163	133	30	22.56%	16	9.82%



**ST MICHAELS AND WICKSTEED**

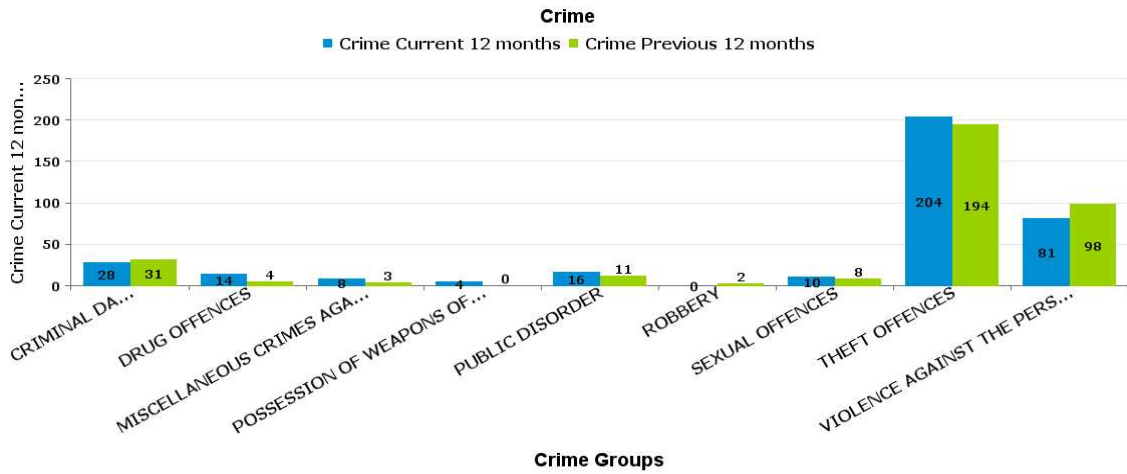
Crime Group	Current 12 mths	Previous 12 mths	+/- Crime	% Change	Number of resolved Crimes	Resolved Rate (past 12mths)
CRIMINAL DAMAGE & ARSON	77	71	6	8.45%	6	7.79%
DRUG OFFENCES	19	13	6	46.15%	13	68.42%
MISCELLANEOUS CRIMES AGAINST SOCIETY	12	12	0	0.00%	5	41.67%
POSSESSION OF WEAPONS OFFENCES	7	8	-1	-12.50%	1	14.29%
PUBLIC DISORDER	29	22	7	31.82%	8	27.59%
ROBBERY	3	6	-3	-50.00%		
SEXUAL OFFENCES	34	18	16	88.89%	4	11.76%
THEFT OFFENCES	320	320	0	0.00%	23	7.19%
VIOLENCE AGAINST THE PERSON	262	183	79	43.17%	46	17.56%





## ST PETERS

Crime Group	Current 12 mths	Previous 12 mths	+/- Crime	% Change	Number of resolved Crimes	Resolved Rate (past 12mths)
CRIMINAL DAMAGE & ARSON	28	31	-3	-9.68%	6	21.43%
DRUG OFFENCES	14	4	10	250.00%	7	50.00%
MISCELLANEOUS CRIMES AGAINST SOCIETY	8	3	5	166.67%	1	12.50%
POSSESSION OF WEAPONS OFFENCES	4	0	4	-100.00%	1	25.00%
PUBLIC DISORDER	16	11	5	45.45%	5	31.25%
ROBBERY	0	2	-2	-100.00%	2	
SEXUAL OFFENCES	10	8	2	25.00%	4	40.00%
THEFT OFFENCES	204	194	10	5.15%	15	7.35%
VIOLENCE AGAINST THE PERSON	81	98	-17	-17.35%	31	38.27%



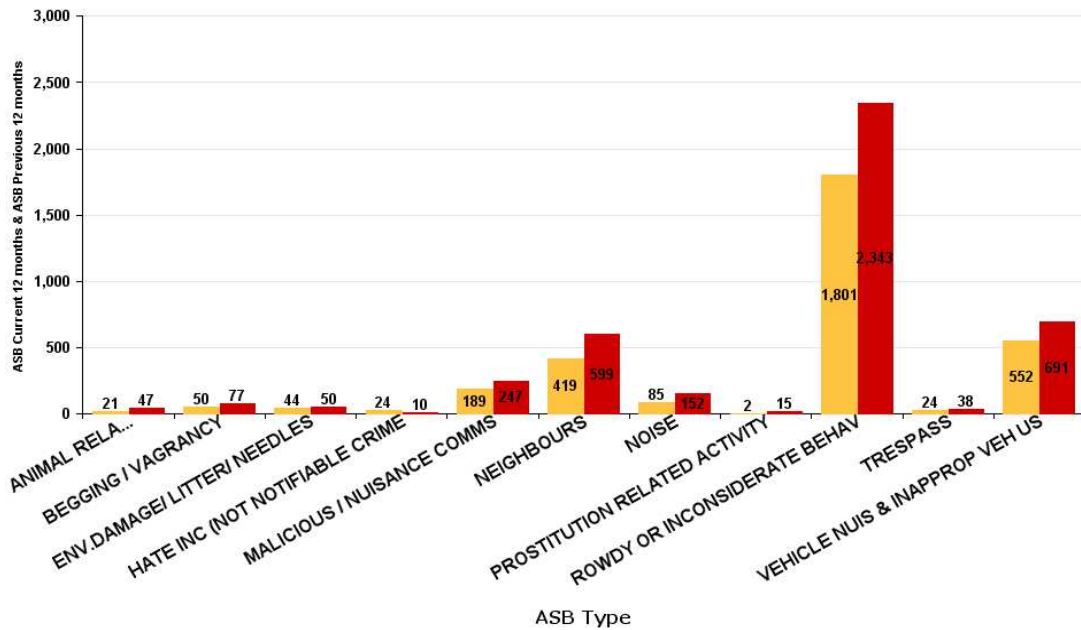
ASB Reports by CSP Sector and Ward

KETTERING BOROUGH ASB

ASB Type	Current 12 mths	Previous 12 mths	+ / - Crime	% Change
ANIMAL RELATED INC ANTI-SOCIAL	21	47	-26	-55.32%
BEGGING / VAGRANCY	50	77	-27	-35.06%
ENV.DAMAGE/ LITTER/ NEEDLES	44	50	-6	-12.00%
HATE INC (NOT NOTIFIABLE CRIME)	24	10	14	140.00%
MALICIOUS / NUISANCE COMMS	189	247	-58	-23.48%
NEIGHBOURS	419	599	-180	-30.05%
NOISE	85	152	-67	-44.08%
PROSTITUTION RELATED ACTIVITY	2	15	-13	-86.67%
ROWDY OR INCONSIDERATE BEHAV	1801	2343	-542	-23.13%
TRESPASS	24	38	-14	-36.84%
VEHICLE NUIS & INAPPROP VEH US	552	691	-139	-20.12%
<b>Sum:</b>	<b>3211</b>	<b>4269</b>	<b>-1058</b>	<b>-24.78%</b>

ASB

ASB Current 12 months ASB Previous 12 months



ASB Reports by CSP Sector and Ward

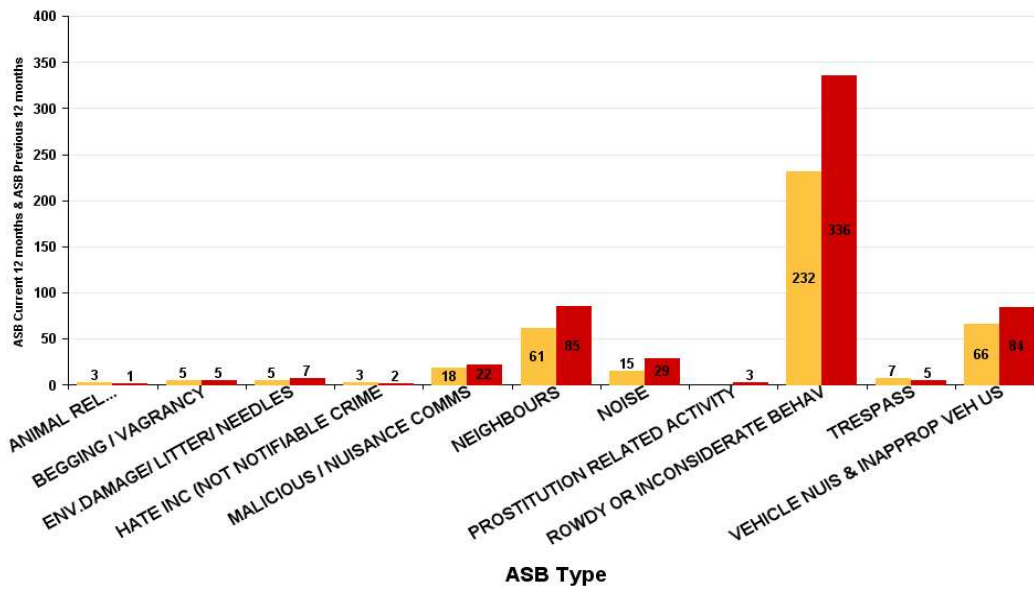
**KETTERING TOWN ASB**

All Saints

ASB Type	Current 12 Months 2017-09 2018-08	Previous 12 Months 2016-09 2017-08	+/- Crime	% Change
ANIMAL RELATED INC ANTI-SOCIAL	3	1	2	200.00%
BEGGING / VAGRANCY	5	5	0	0.00%
ENV.DAMAGE/ LITTER/ NEEDLES	5	7	-2	-28.57%
HATE INC (NOT NOTIFIABLE CRIME	3	2	1	50.00%
MALICIOUS / NUISANCE COMMS	18	22	-4	-18.18%
NEIGHBOURS	61	85	-24	-28.24%
NOISE	15	29	-14	-48.28%
PROSTITUTION RELATED ACTIVITY		3	-3	-100.00%
ROWDY OR INCONSIDERATE BEHAV	232	336	-104	-30.95%
TRESPASS	7	5	2	40.00%
VEHICLE NUIS & INAPPROP VEH US	66	84	-18	-21.43%
<b>Sum:</b>	<b>415</b>	<b>579</b>	<b>-164</b>	<b>-28.32%</b>

ASB

ASB Current 12 months ASB Previous 12 months

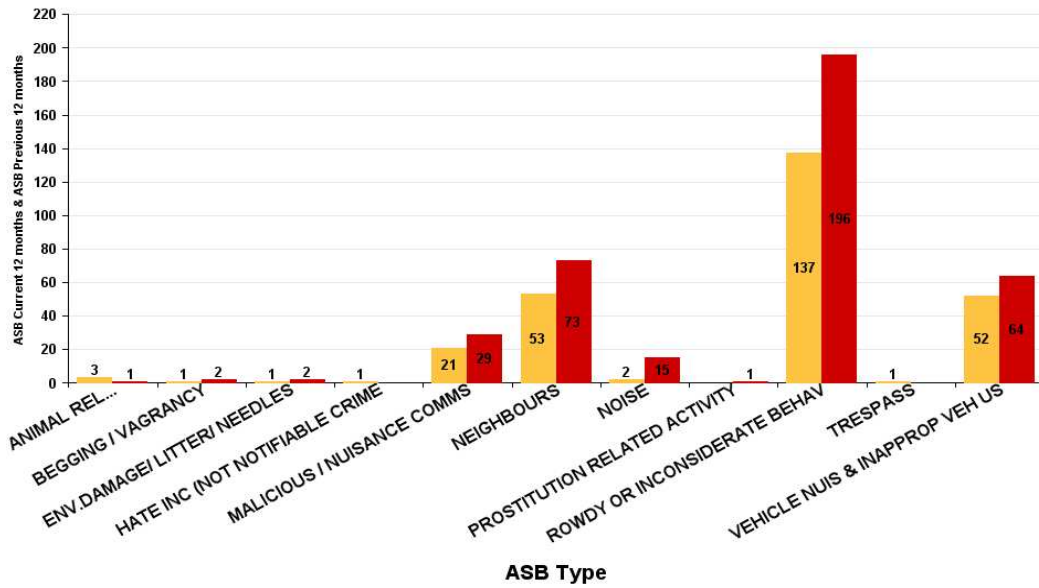


**Avondale Grange**

ASB Type	Current 12 Months 2017-09 2018-08	Previous 12 Months 2016-09 2017-08	+/- Crime	% Change
ANIMAL RELATED INC ANTI-SOCIAL	3	1	2	200.00%
BEGGING / VAGRANCY	1	2	-1	-50.00%
ENV.DAMAGE/ LITTER/ NEEDLES	1	2	-1	-50.00%
HATE INC (NOT NOTIFIABLE CRIME	1		1	-100.00%
MALICIOUS / NUISANCE COMMS	21	29	-8	-27.59%
NEIGHBOURS	53	73	-20	-27.40%
NOISE	2	15	-13	-86.67%
PROSTITUTION RELATED ACTIVITY		1	-1	-100.00%
ROWDY OR INCONSIDERATE BEHAV	137	196	-59	-30.10%
TRESPASS	1		1	-100.00%
VEHICLE NUIS & INAPPROP VEH US	52	64	-12	-18.75%
<b>Sum:</b>	<b>272</b>	<b>383</b>	<b>-111</b>	<b>-28.98%</b>

**ASB**

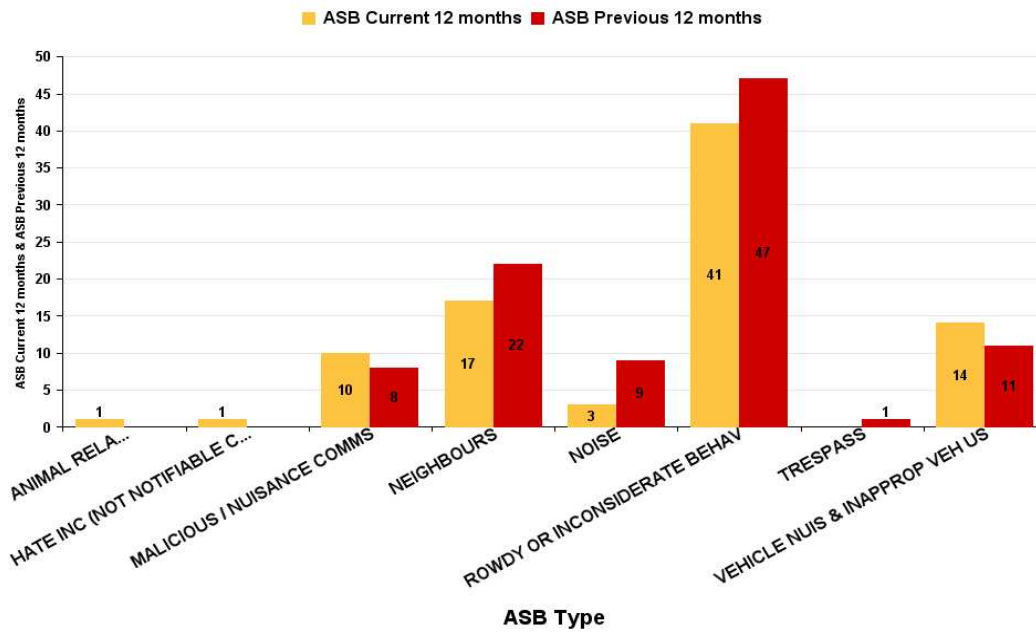
■ ASB Current 12 months ■ ASB Previous 12 months



**Brambleside**

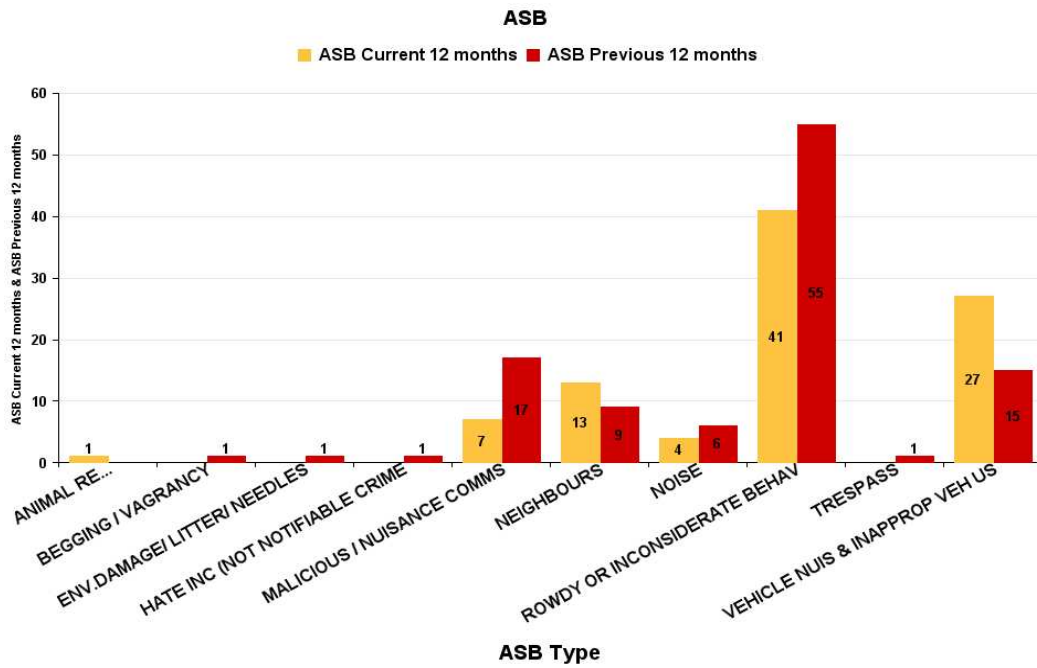
ASB Type	Current 12 Months 2017-09 2018-08	Previous 12 Months 2016-09 2017-08	+/- Crime	% Change
ANIMAL RELATED INC ANTI-SOCIAL	1		1	-100.00%
HATE INC (NOT NOTIFIABLE CRIME	1		1	-100.00%
MALICIOUS / NUISANCE COMMS	10	8	2	25.00%
NEIGHBOURS	17	22	-5	-22.73%
NOISE	3	9	-6	-66.67%
ROWDY OR INCONSIDERATE BEHAV	41	47	-6	-12.77%
TRESPASS		1	-1	-100.00%
VEHICLE NUIS & INAPPROP VEH US	14	11	3	27.27%
<b>Sum:</b>	<b>87</b>	<b>98</b>	<b>-11</b>	<b>-11.22%</b>

**ASB**



Ise Lodge

ASB Type	Current 12 Months 2017-09 2018-08	Previous 12 Months 2016-09 2017-08	+/- Crime	% Change
ANIMAL RELATED INC ANTI-SOCIAL	1		1	-100.00%
BEGGING / VAGRANCY		1	-1	-100.00%
ENV.DAMAGE/ LITTER/ NEEDLES		1	-1	-100.00%
HATE INC (NOT NOTIFIABLE CRIME		1	-1	-100.00%
MALICIOUS / NUISANCE COMMS	7	17	-10	-58.82%
NEIGHBOURS	13	9	4	44.44%
NOISE	4	6	-2	-33.33%
ROWDY OR INCONSIDERATE BEHAV	41	55	-14	-25.45%
TRESPASS		1	-1	-100.00%
VEHICLE NUIS & INAPPROP VEH US	27	15	12	80.00%
<b>Sum:</b>	<b>93</b>	<b>106</b>	<b>-13</b>	<b>-12.26%</b>

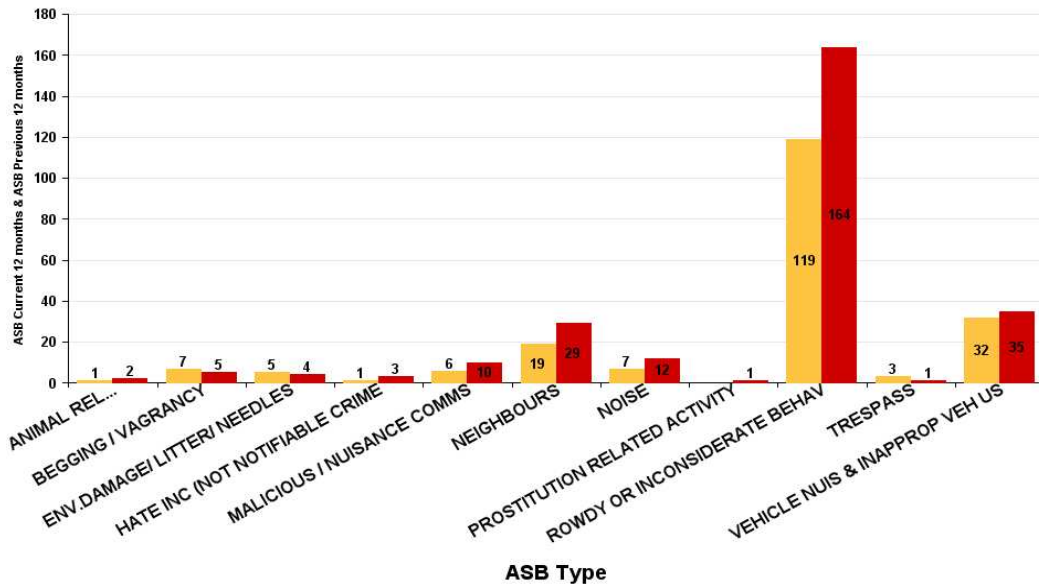


Northfield

ASB Type	Current 12 Months 2017-09 2018-08	Previous 12 Months 2016-09 2017-08	+/- Crime	% Change
ANIMAL RELATED INC ANTI-SOCIAL	1	2	-1	-50.00%
BEGGING / VAGRANCY	7	5	2	40.00%
ENV.DAMAGE/ LITTER/ NEEDLES	5	4	1	25.00%
HATE INC (NOT NOTIFIABLE CRIME	1	3	-2	-66.67%
MALICIOUS / NUISANCE COMMS	6	10	-4	-40.00%
NEIGHBOURS	19	29	-10	-34.48%
NOISE	7	12	-5	-41.67%
PROSTITUTION RELATED ACTIVITY		1	-1	-100.00%
ROWDY OR INCONSIDERATE BEHAV	119	164	-45	-27.44%
TRESPASS	3	1	2	200.00%
VEHICLE NUIS & INAPPROP VEH US	32	35	-3	-8.57%
<b>Sum:</b>	<b>200</b>	<b>266</b>	<b>-66</b>	<b>-24.81%</b>

ASB

ASB Current 12 months ASB Previous 12 months

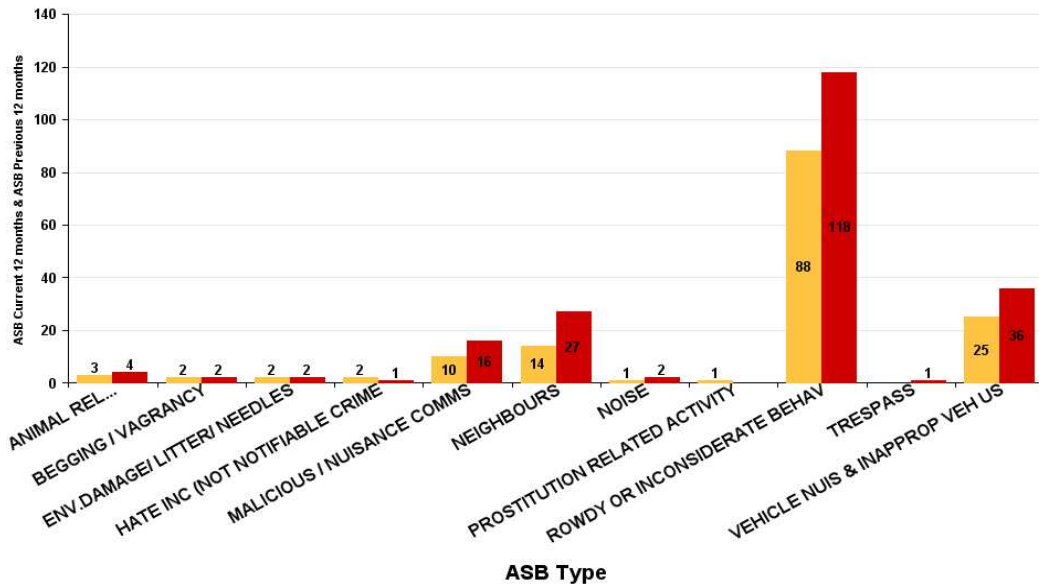


Pipers Hill

ASB Type	Current 12 Months 2017-09 2018-08	Previous 12 Months 2016-09 2017-08	+/- Crime	% Change
ANIMAL RELATED INC ANTI-SOCIAL	3	4	-1	-25.00%
BEGGING / VAGRANCY	2	2	0	0.00%
ENV.DAMAGE/ LITTER/ NEEDLES	2	2	0	0.00%
HATE INC (NOT NOTIFIABLE CRIME	2	1	1	100.00%
MALICIOUS / NUISANCE COMMS	10	16	-6	-37.50%
NEIGHBOURS	14	27	-13	-48.15%
NOISE	1	2	-1	-50.00%
PROSTITUTION RELATED ACTIVITY	1		1	-100.00%
ROWDY OR INCONSIDERATE BEHAV	88	118	-30	-25.42%
TRESPASS		1	-1	-100.00%
VEHICLE NUIS & INAPPROP VEH US	25	36	-11	-30.56%
<b>Sum:</b>	<b>148</b>	<b>209</b>	<b>-61</b>	<b>-29.19%</b>

ASB

ASB Current 12 months ASB Previous 12 months



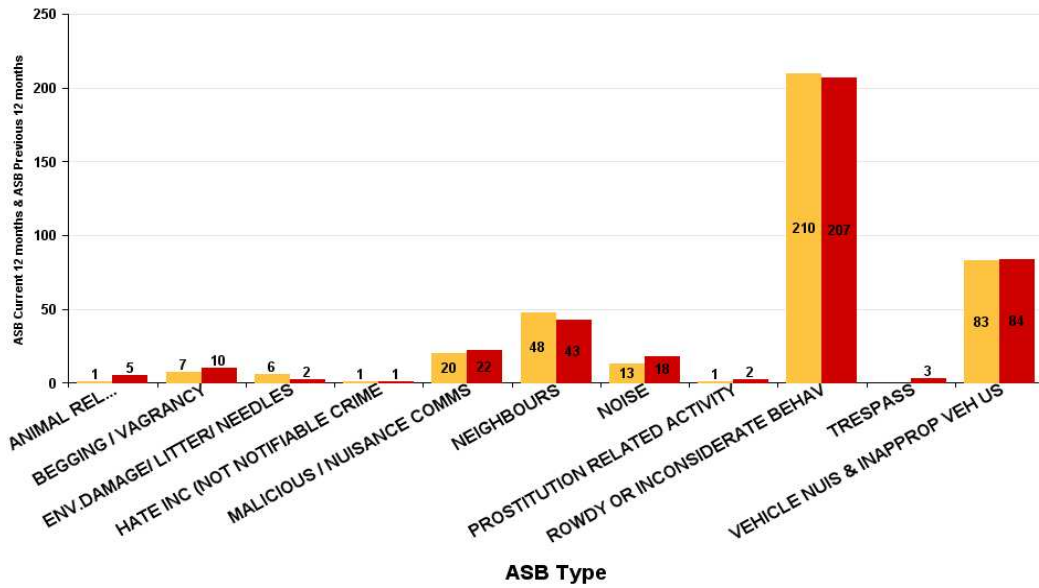


**St Michaels and Wicksteed**

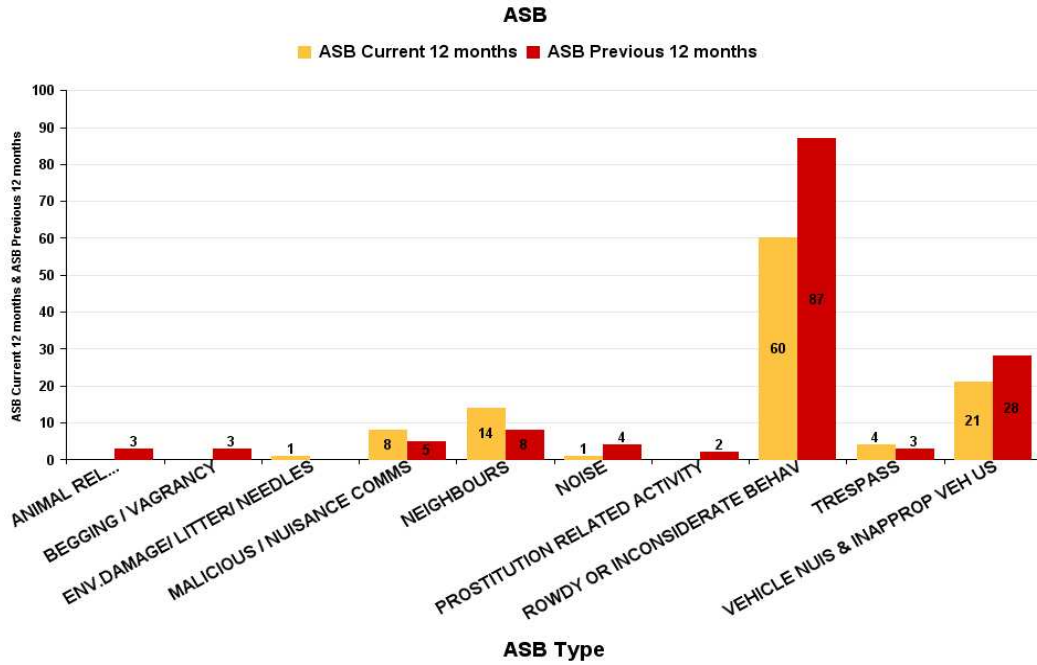
ASB Type	Current 12 Months 2017-09 2018-08	Previous 12 Months 2016-09 2017-08	+/- Crime	% Change
ANIMAL RELATED INC ANTI-SOCIAL	1	5	-4	-80.00%
BEGGING / VAGRANCY	7	10	-3	-30.00%
ENV.DAMAGE/ LITTER/ NEEDLES	6	2	4	200.00%
HATE INC (NOT NOTIFIABLE CRIME	1	1	0	0.00%
MALICIOUS / NUISANCE COMMS	20	22	-2	-9.09%
NEIGHBOURS	48	43	5	11.63%
NOISE	13	18	-5	-27.78%
PROSTITUTION RELATED ACTIVITY	1	2	-1	-50.00%
ROWDY OR INCONSIDERATE BEHAV	210	207	3	1.45%
TRESPASS		3	-3	-100.00%
VEHICLE NUIS & INAPPROP VEH US	83	84	-1	-1.19%
<b>Sum:</b>	<b>390</b>	<b>397</b>	<b>-7</b>	<b>-1.76%</b>

**ASB**

■ ASB Current 12 months ■ ASB Previous 12 months



ASB Type	Current 12 Months 2017-09 2018-08	Previous 12 Months 2016-09 2017-08	+/- Crime	% Change
ANIMAL RELATED INC ANTI-SOCIAL		3	-3	-100.00%
BEGGING / VAGRANCY		3	-3	-100.00%
ENV.DAMAGE/ LITTER/ NEEDLES	1		1	-100.00%
MALICIOUS / NUISANCE COMMS	8	5	3	60.00%
NEIGHBOURS	14	8	6	75.00%
NOISE	1	4	-3	-75.00%
PROSTITUTION RELATED ACTIVITY		2	-2	-100.00%
ROWDY OR INCONSIDERATE BEHAV	60	87	-27	-31.03%
TRESPASS	4	3	1	33.33%
VEHICLE NUIS & INAPPROP VEH US	21	28	-7	-25.00%
<b>Sum:</b>	<b>109</b>	<b>143</b>	<b>-34</b>	<b>-23.78%</b>



ASB Type	Current 12 Months 2017-09 2018-08	Previous 12 Months 2016-09 2017-08	+/- Crime	% Change
ANIMAL RELATED INC ANTI-SOCIAL	1	3	-2	-66.67%
BEGGING / VAGRANCY	27	46	-19	-41.30%
ENV.DAMAGE/ LITTER/ NEEDLES	15	13	2	15.38%
HATE INC (NOT NOTIFIABLE CRIME	9	2	7	350.00%
MALICIOUS / NUISANCE COMMS	18	26	-8	-30.77%
NEIGHBOURS	43	104	-61	-58.65%
NOISE	17	33	-16	-48.48%
PROSTITUTION RELATED ACTIVITY		3	-3	-100.00%
ROWDY OR INCONSIDERATE BEHAV	403	632	-229	-36.23%
TRESPASS	3	11	-8	-72.73%
VEHICLE NUIS & INAPPROP VEH US	49	66	-17	-25.76%
<b>Sum:</b>	<b>585</b>	<b>939</b>	<b>-354</b>	<b>-37.70%</b>

**ASB**

■ ASB Current 12 months ■ ASB Previous 12 months

