

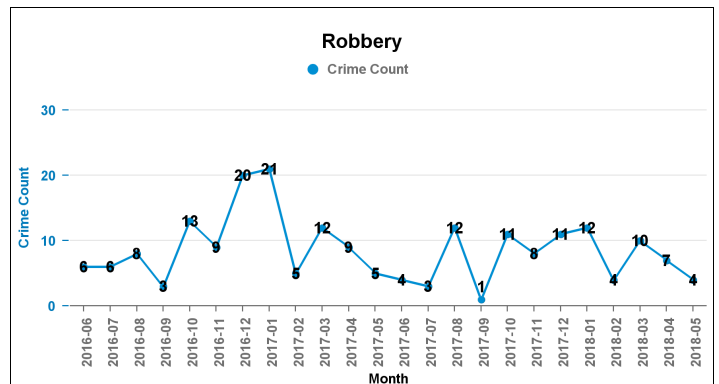
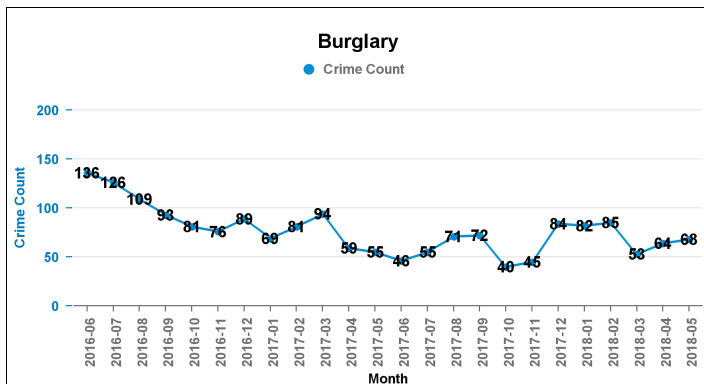
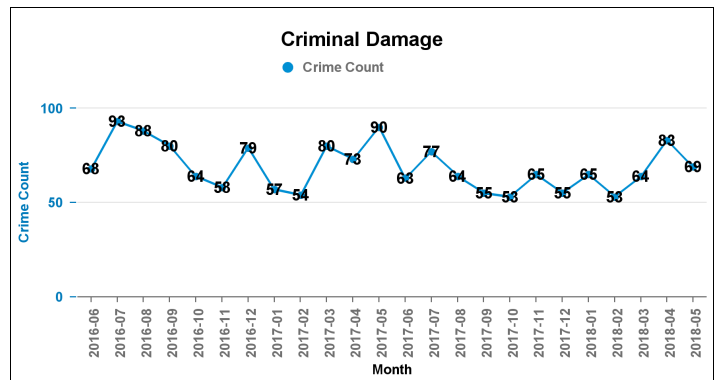
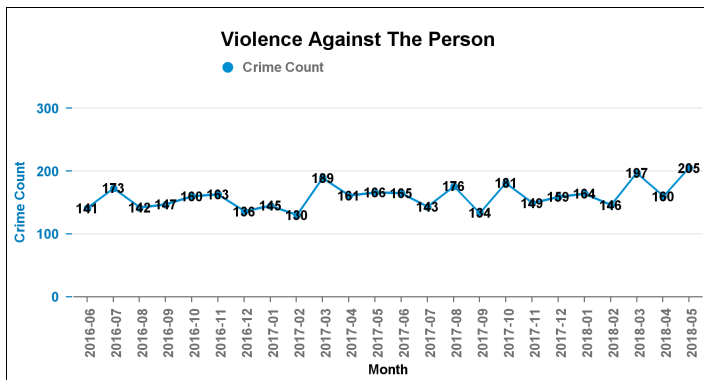
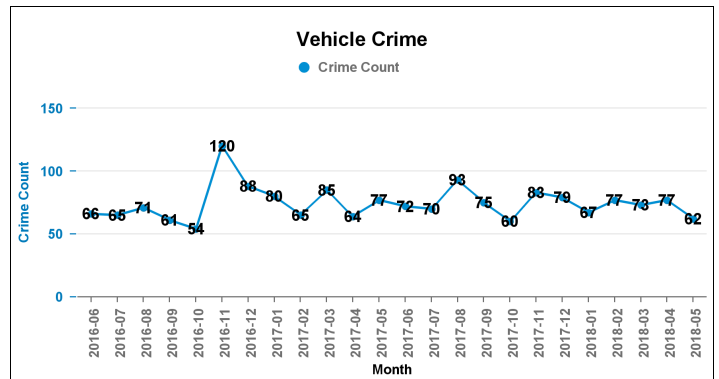
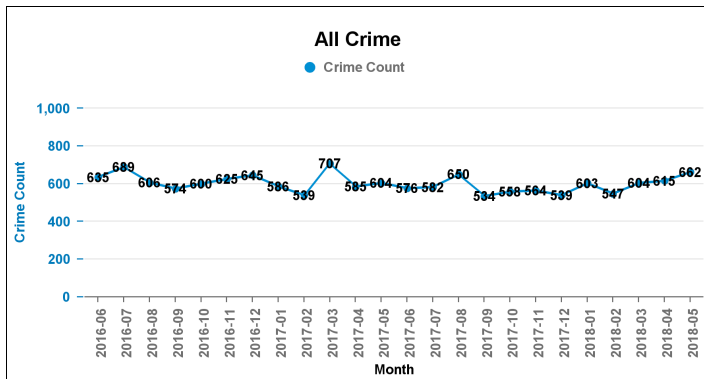
Previous 12 Months 2016-06 2017-05

KETTERING

Current 12 Months 2017-06 2018-05

Previous 12 Months 2016-06 2017-05

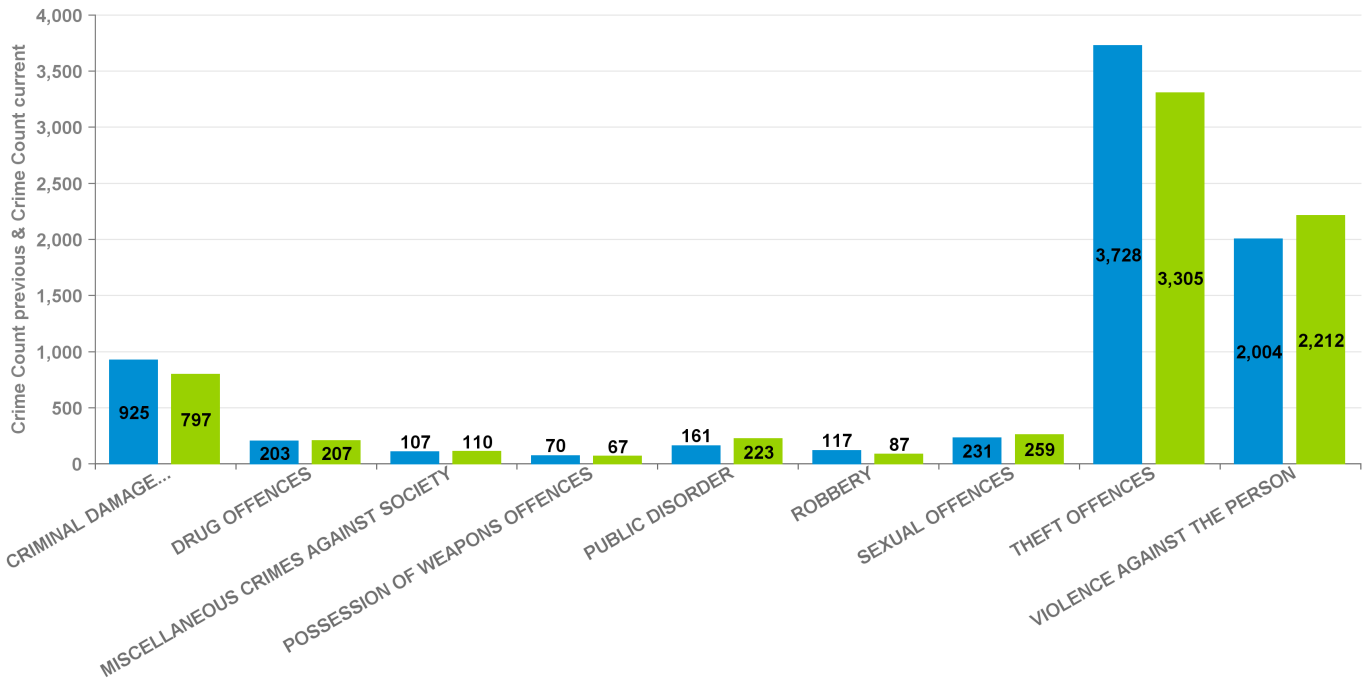
Crime Group	Current 12 mths	Previous 12 mths	+/- Crime	% Change	Number of resolved Crimes	Resolved Rate (past 12mths)
CRIMINAL DAMAGE & ARSON	797	925	-128	-13.84%	118	14.81%
DRUG OFFENCES	207	203	4	1.97%	151	72.95%
MISCELLANEOUS CRIMES AGAINST SOCIETY	110	107	3	2.80%	28	25.45%
POSSESSION OF WEAPONS OFFENCES	67	70	-3	-4.29%	35	52.24%
PUBLIC DISORDER	223	161	62	38.51%	70	31.39%
ROBBERY	87	117	-30	-25.64%	31	35.63%
SEXUAL OFFENCES	259	231	28	12.12%	26	10.04%
THEFT OFFENCES	3,305	3,728	-423	-11.35%	338	10.23%
VIOLENCE AGAINST THE PERSON	2,212	2,004	208	10.38%	462	20.89%



Previous 12 Months 2016-06 2017-05

All Crime

■ Crime Count previous ■ Crime Count current



Crime Tree LV2 Desc

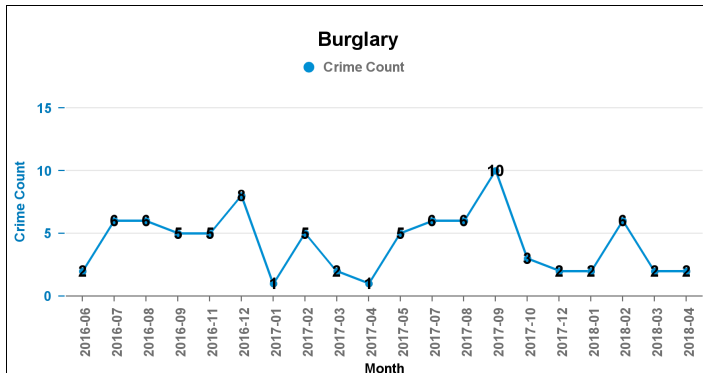
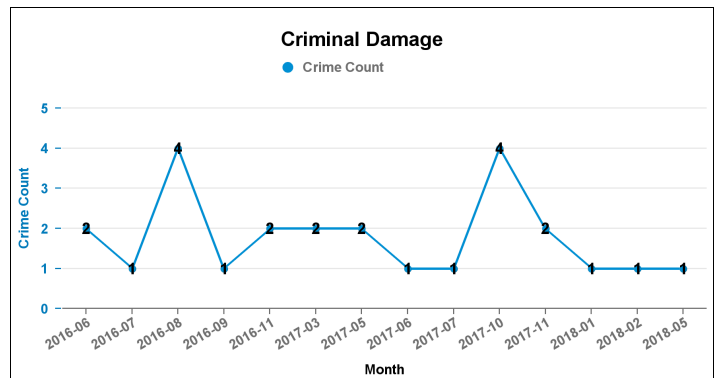
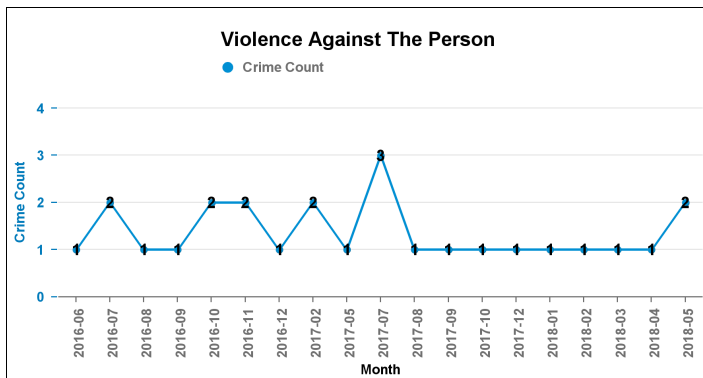
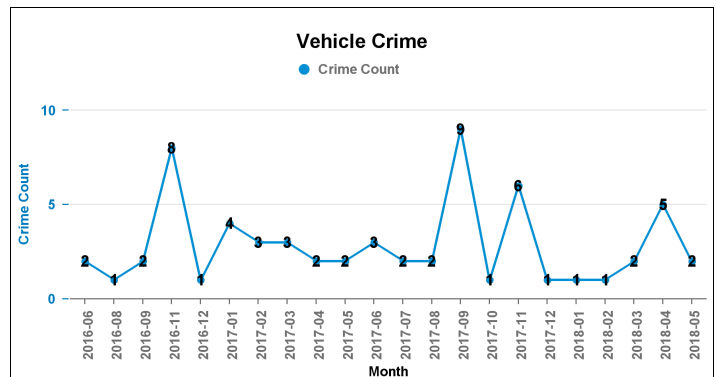
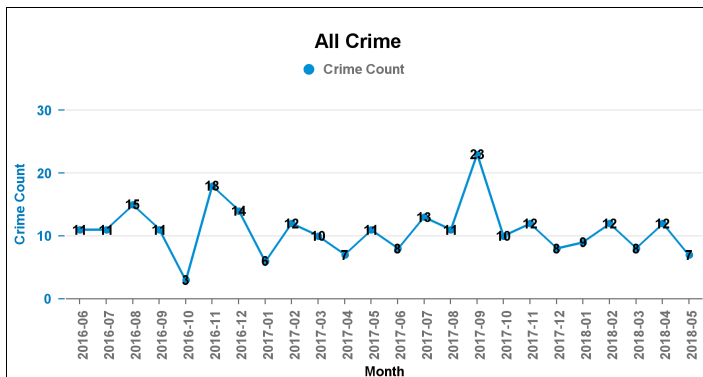
Crime Reports by CSP Sector and Ward

Kettering Rural

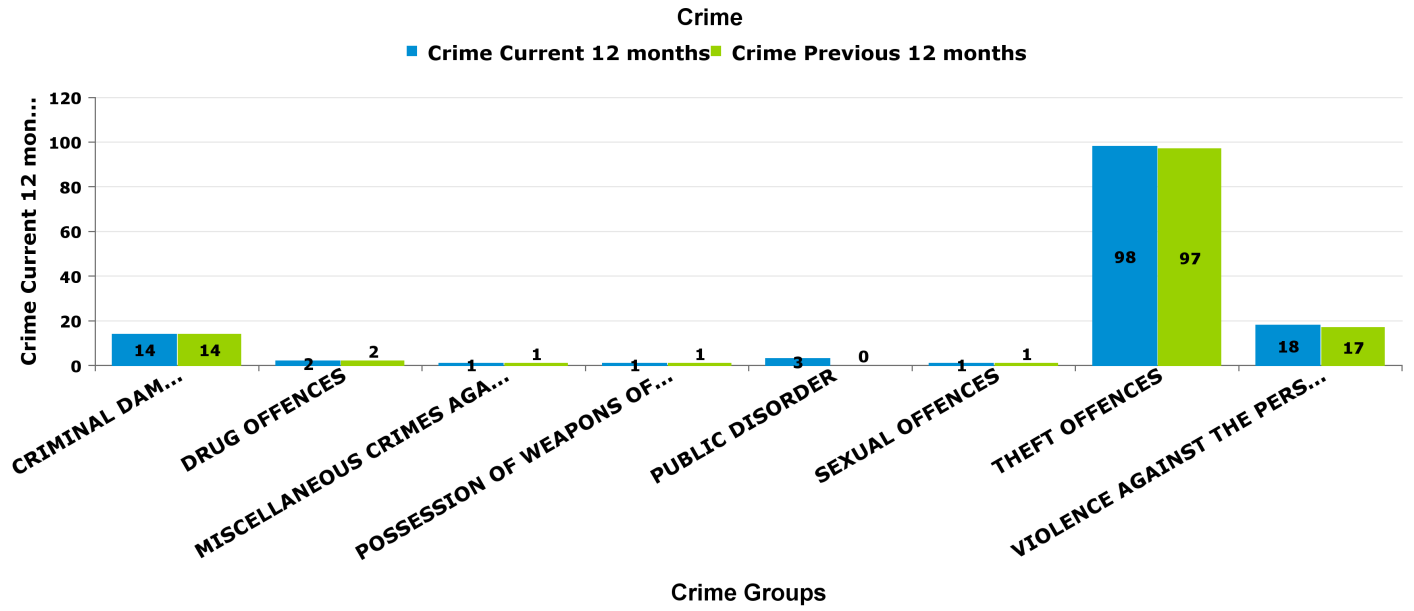
KETTERING

QUEEN ELEANOR AND BUCCLEUCH

Crime Group	Current 12 mths	Previous 12 mths	+/- Crime	% Change	Number of resolved Crimes	Resolved Rate (past 12mths)
CRIMINAL DAMAGE & ARSON	14	14	0	0.00%	1	7.14%
DRUG OFFENCES	2	2	0	0.00%		
MISCELLANEOUS CRIMES AGAINST SOCIETY	1	1	0	0.00%		
POSSESSION OF WEAPONS OFFENCES	1	1	0	0.00%		
PUBLIC DISORDER	3	0	3	-100.00%		
ROBBERY	0	0	0	-100.00%	1	
SEXUAL OFFENCES	1	1	0	0.00%	1	100.00%
THEFT OFFENCES	98	97	1	1.03%	1	1.02%
VIOLENCE AGAINST THE PERSON	18	17	1	5.88%	6	33.33%



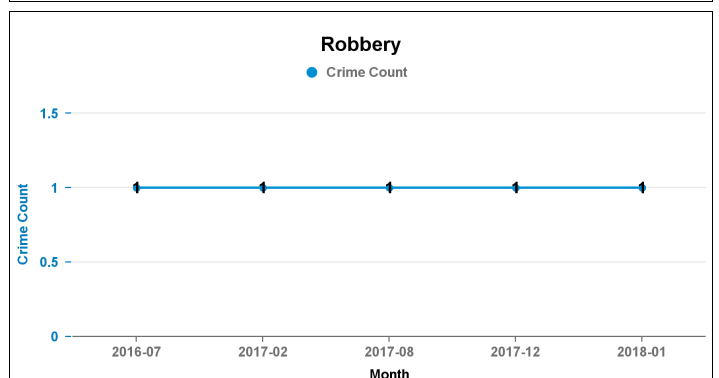
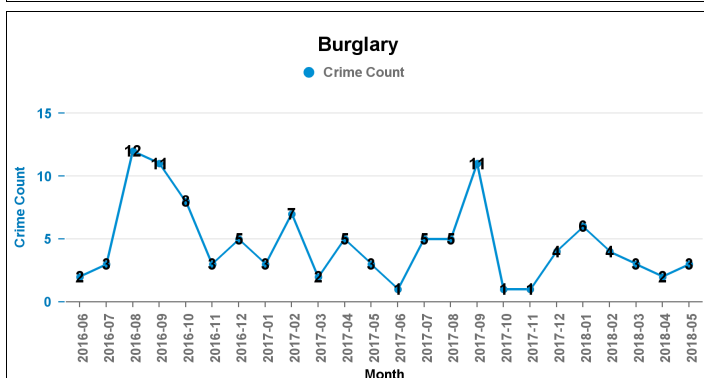
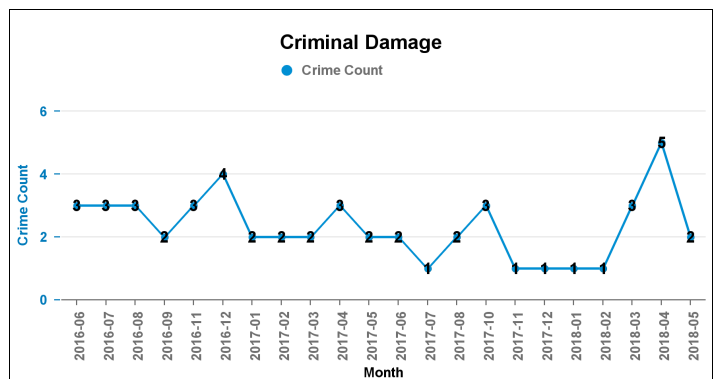
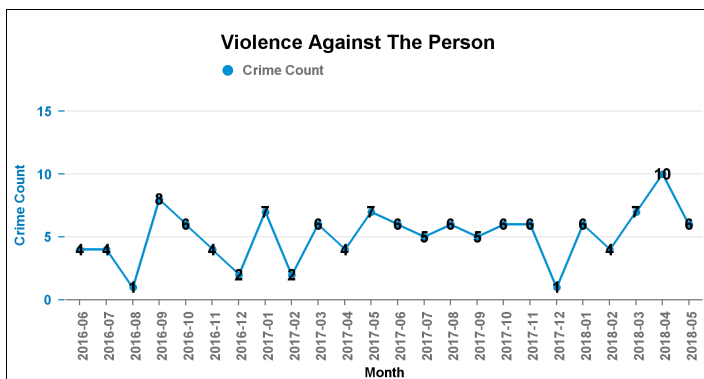
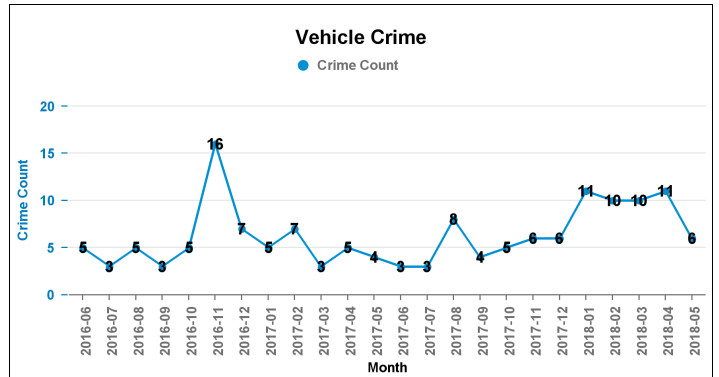
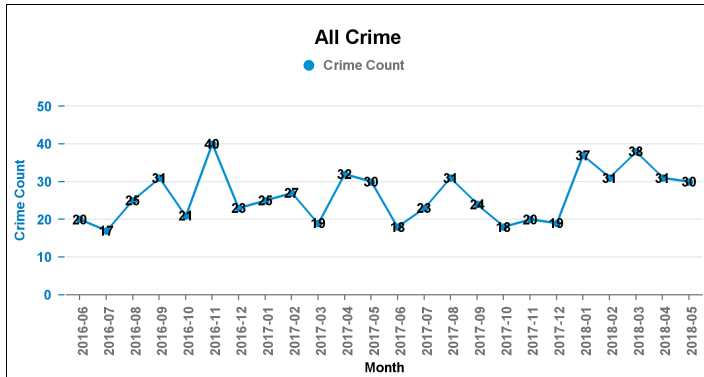
Crime Reports by CSP Sector and Ward



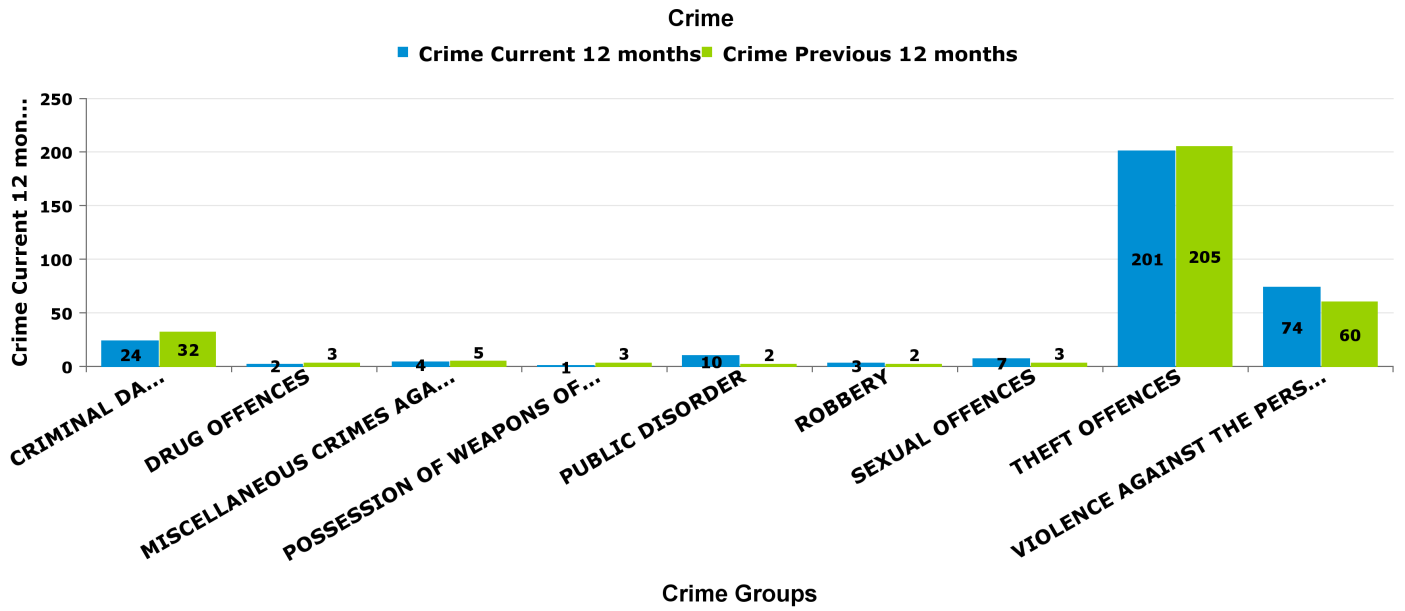
Crime Reports by CSP Sector and Ward

SLADE

Crime Group	Current 12 mths	Previous 12 mths	+/- Crime	% Change	Number of resolved Crimes	Resolved Rate (past 12mths)
CRIMINAL DAMAGE & ARSON	24	32	-8	-25.00%	4	16.67%
DRUG OFFENCES	2	3	-1	-33.33%	1	50.00%
MISCELLANEOUS CRIMES AGAINST SOCIETY	4	5	-1	-20.00%		
POSSESSION OF WEAPONS OFFENCES	1	3	-2	-66.67%	1	100.00%
PUBLIC DISORDER	10	2	8	400.00%	7	70.00%
ROBBERY	3	2	1	50.00%	1	33.33%
SEXUAL OFFENCES	7	3	4	133.33%		
THEFT OFFENCES	201	205	-4	-1.95%	9	4.48%
VIOLENCE AGAINST THE PERSON	74	60	14	23.33%	9	12.16%



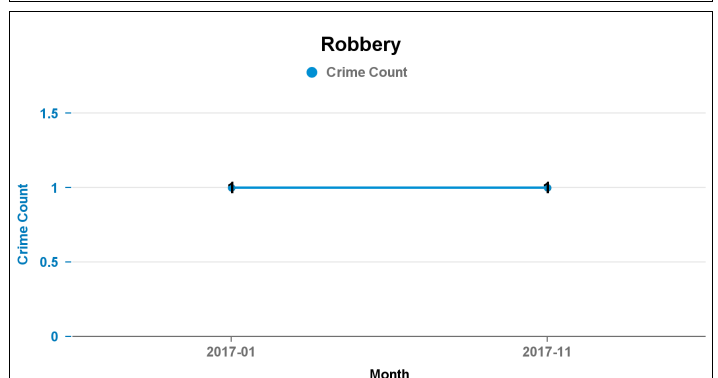
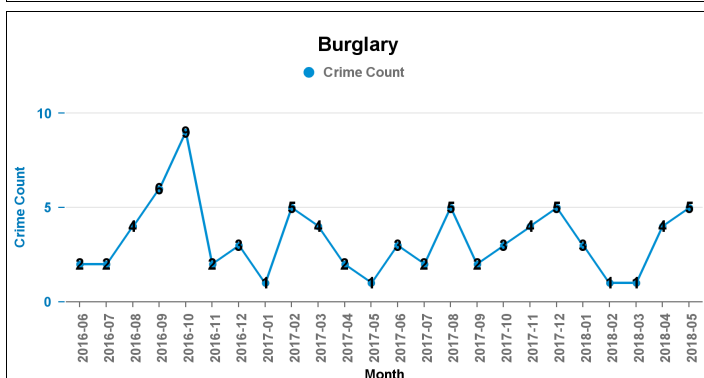
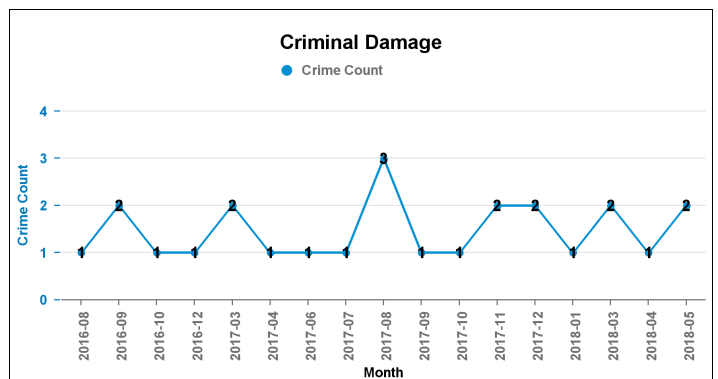
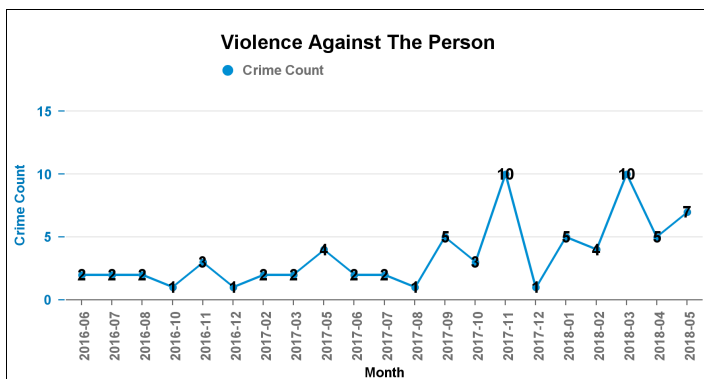
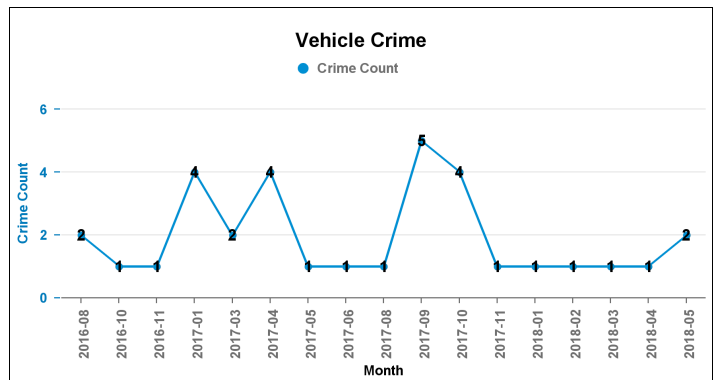
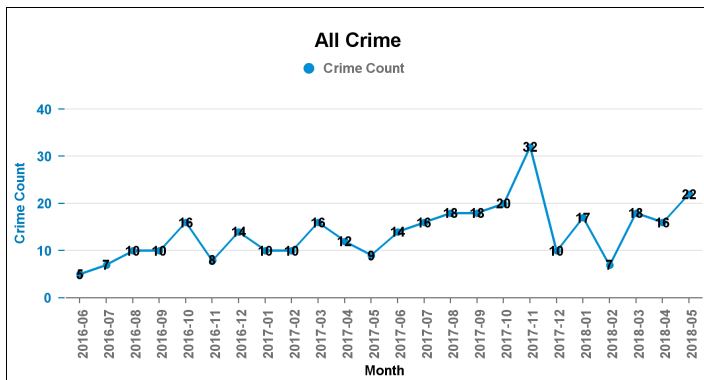
Crime Reports by CSP Sector and Ward



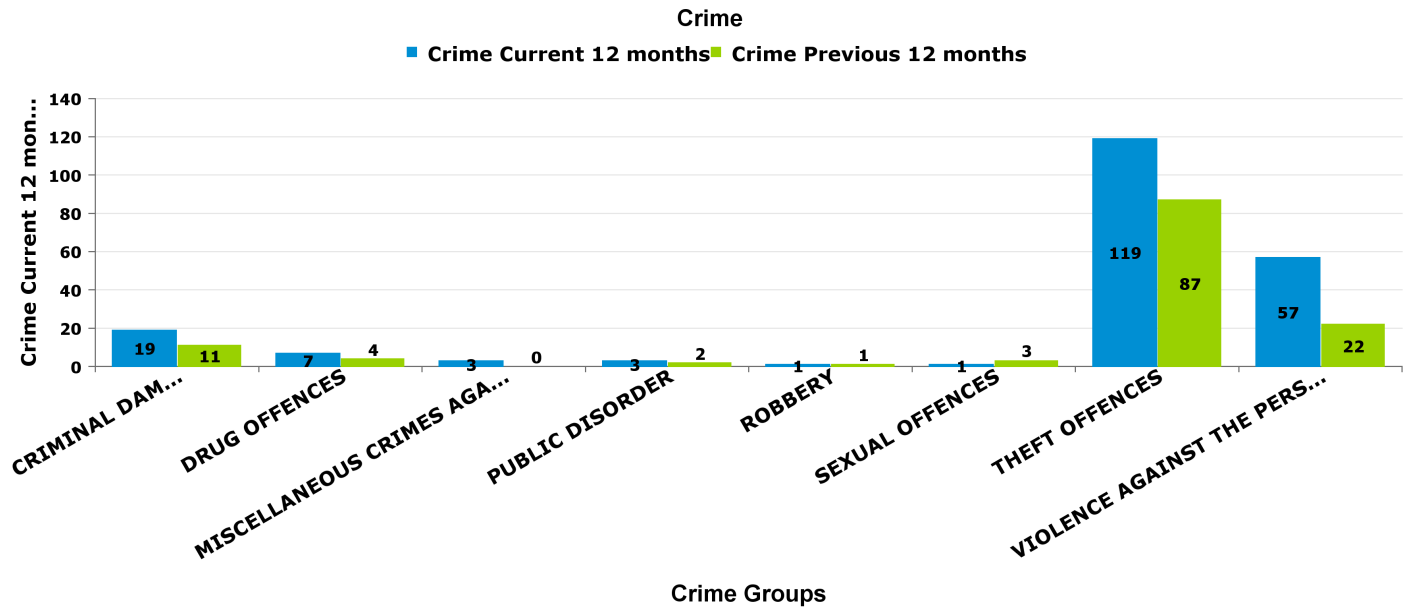
Crime Reports by CSP Sector and Ward

WELLAND

Crime Group	Current 12 mths	Previous 12 mths	+/- Crime	% Change	Number of resolved Crimes	Resolved Rate (past 12mths)
CRIMINAL DAMAGE & ARSON	19	11	8	72.73%	7	36.84%
DRUG OFFENCES	7	4	3	75.00%	14	200.00%
MISCELLANEOUS CRIMES AGAINST SOCIETY	3	0	3	-100.00%	2	66.67%
POSSESSION OF WEAPONS OFFENCES	0	0	0	-100.00%	3	
PUBLIC DISORDER	3	2	1	50.00%	5	166.67%
ROBBERY	1	1	0	0.00%		
SEXUAL OFFENCES	1	3	-2	-66.67%	2	200.00%
THEFT OFFENCES	119	87	32	36.78%	9	7.56%
VIOLENCE AGAINST THE PERSON	57	22	35	159.09%	39	68.42%



Crime Reports by CSP Sector and Ward



ASB Reports by CSP Sector and Ward

KETTERING

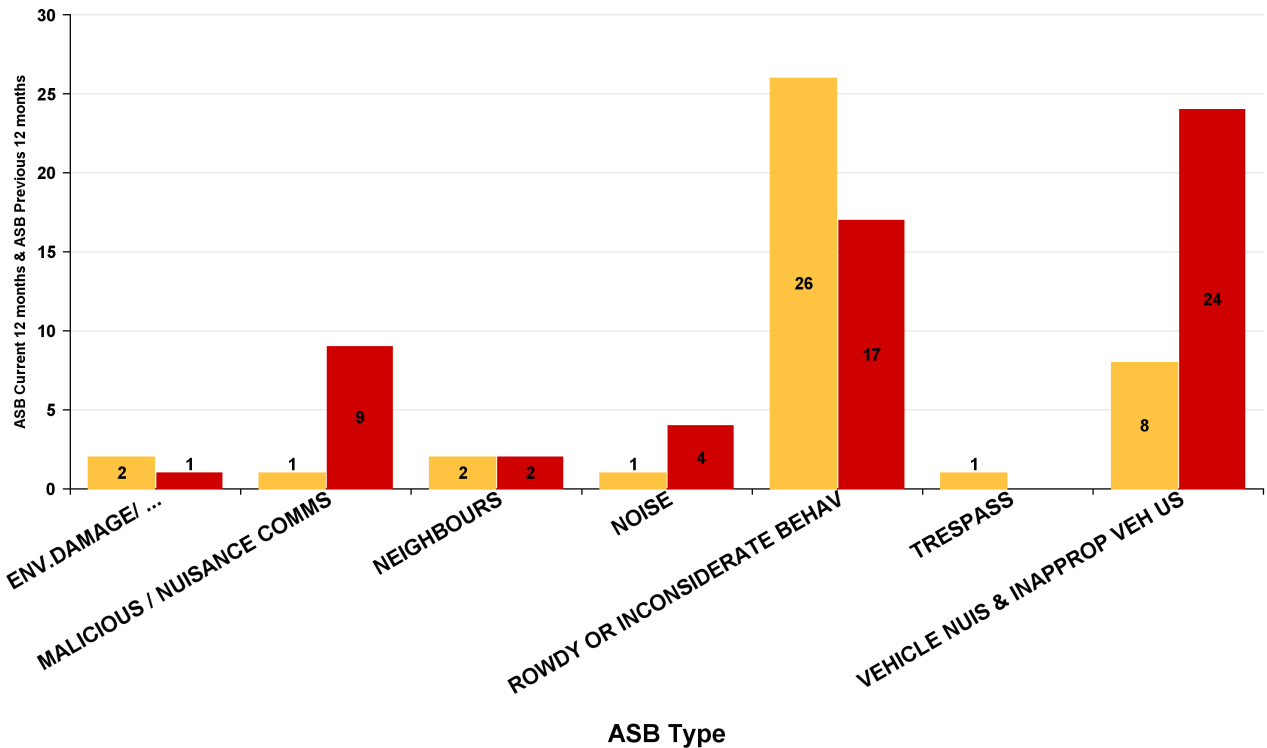
Kettering Rural

Queen Eleanor and Buccleuch

ASB Type	Current 12 Months 2017-06 2018-05	Previous 12 Months 2016-06 2017-05	+/- Crime	% Change
ENV.DAMAGE/ LITTER/ NEEDLES	2	1	1	100.00%
MALICIOUS / NUISANCE COMMS	1	9	-8	-88.89%
NEIGHBOURS	2	2	0	0.00%
NOISE	1	4	-3	-75.00%
ROWDY OR INCONSIDERATE BEHAV	26	17	9	52.94%
TRESPASS	1		1	-100.00%
VEHICLE NUIS & INAPPROP VEH US	8	24	-16	-66.67%
Sum:	41	57	-16	-28.07%

ASB

■ ASB Current 12 months ■ ASB Previous 12 months



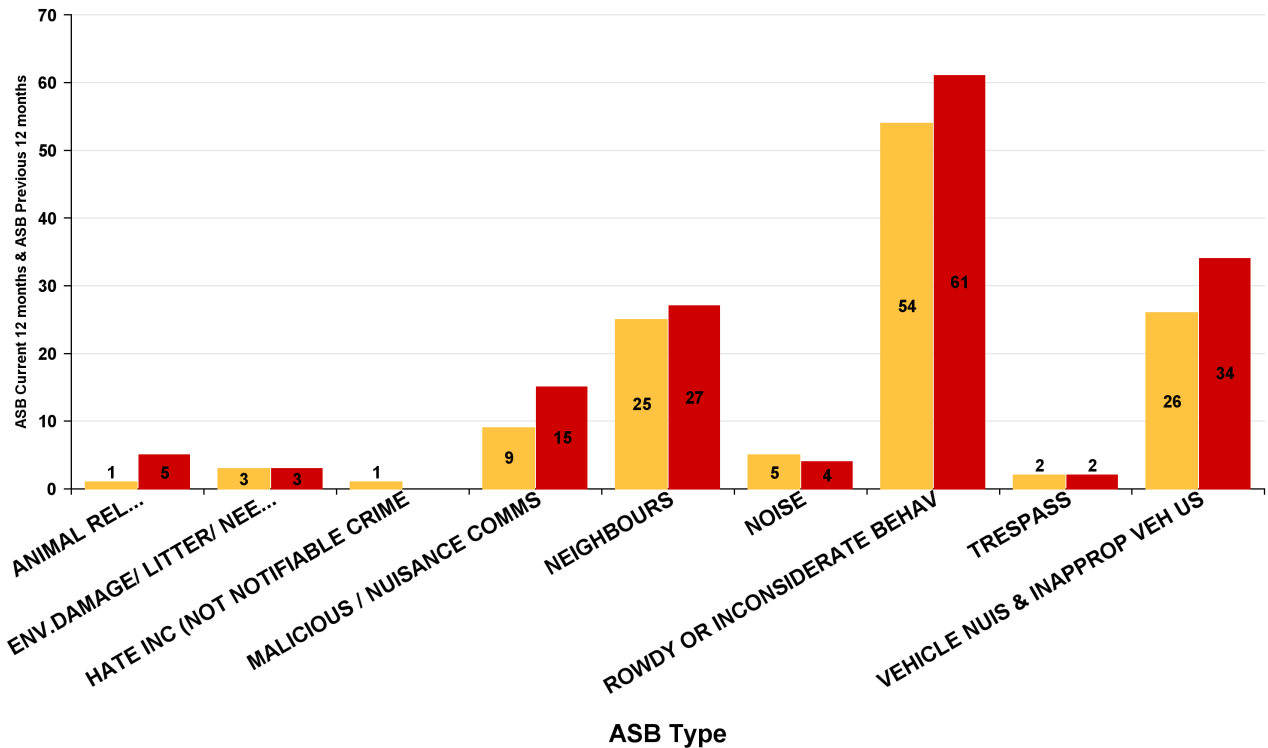
ASB Reports by CSP Sector and Ward

Slade

ASB Type	Current 12 Months 2017-06 2018-05	Previous 12 Months 2016-06 2017-05	+/- Crime	% Change
ANIMAL RELATED INC ANTI-SOCIAL	1	5	-4	-80.00%
ENV.DAMAGE/ LITTER/ NEEDLES	3	3	0	0.00%
HATE INC (NOT NOTIFIABLE CRIME)	1		1	-100.00%
MALICIOUS / NUISANCE COMMS	9	15	-6	-40.00%
NEIGHBOURS	25	27	-2	-7.41%
NOISE	5	4	1	25.00%
ROWDY OR INCONSIDERATE BEHAV	54	61	-7	-11.48%
TRESPASS	2	2	0	0.00%
VEHICLE NUIS & INAPPROP VEH US	26	34	-8	-23.53%
Sum:	126	151	-25	-16.56%

ASB

■ ASB Current 12 months ■ ASB Previous 12 months



ASB Reports by CSP Sector and Ward

Welland

ASB Type	Current 12 Months 2017-06 2018-05	Previous 12 Months 2016-06 2017-05	+/- Crime	% Change
ANIMAL RELATED INC ANTI-SOCIAL	1	4	-3	-75.00%
ENV.DAMAGE/ LITTER/ NEEDLES		4	-4	-100.00%
MALICIOUS / NUISANCE COMMS	2	7	-5	-71.43%
NEIGHBOURS		10	-10	-100.00%
ROWDY OR INCONSIDERATE BEHAV	17	11	6	54.55%
TRESPASS		3	-3	-100.00%
VEHICLE NUIS & INAPPROP VEH US	11	33	-22	-66.67%
Sum:	31	72	-41	-56.94%

