

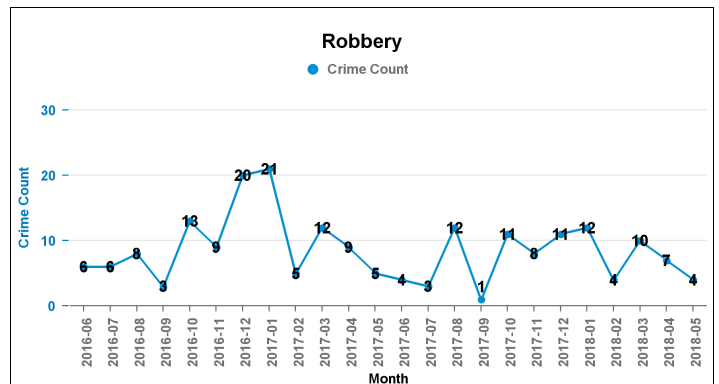
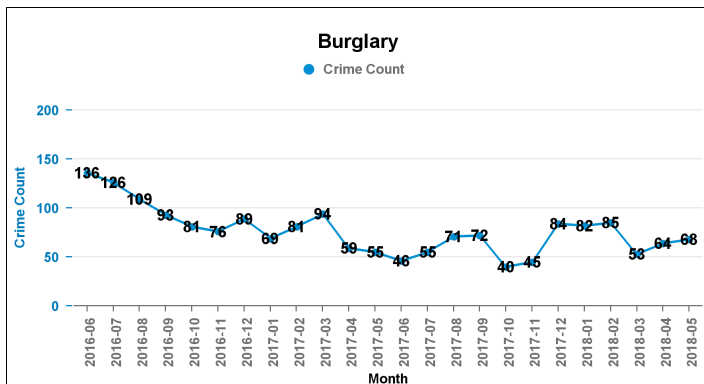
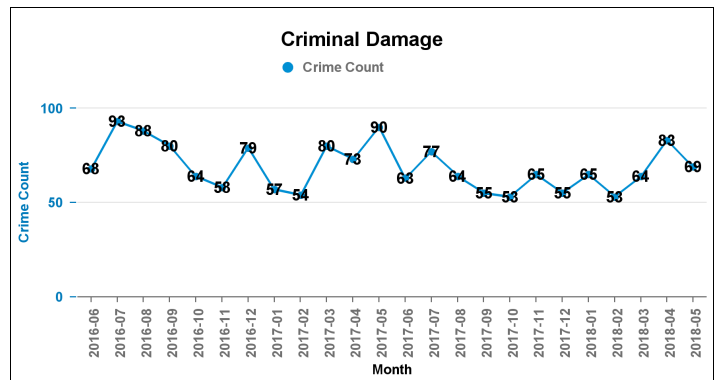
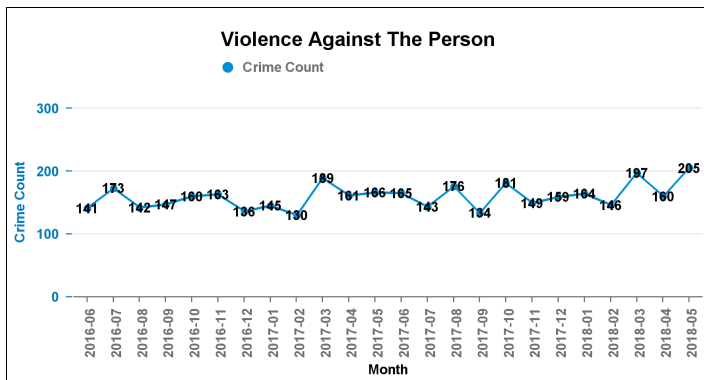
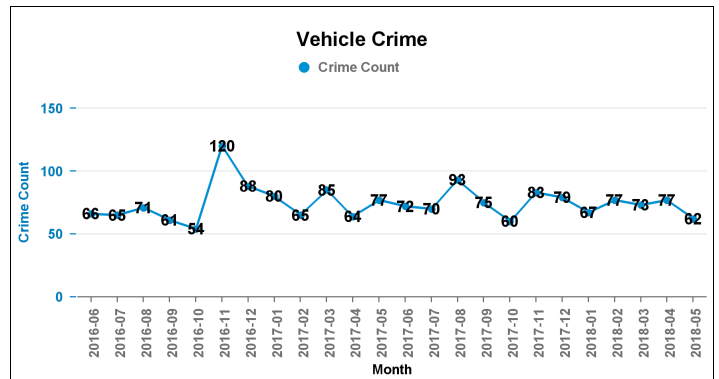
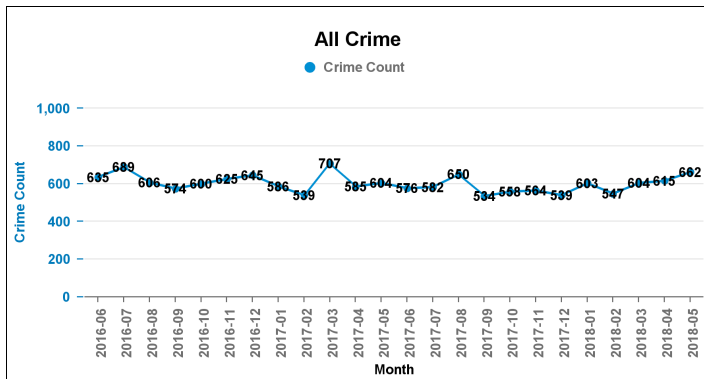
Previous 12 Months 2016-06 2017-05

# KETTERING

Current 12 Months 2017-06 2018-05

Previous 12 Months 2016-06 2017-05

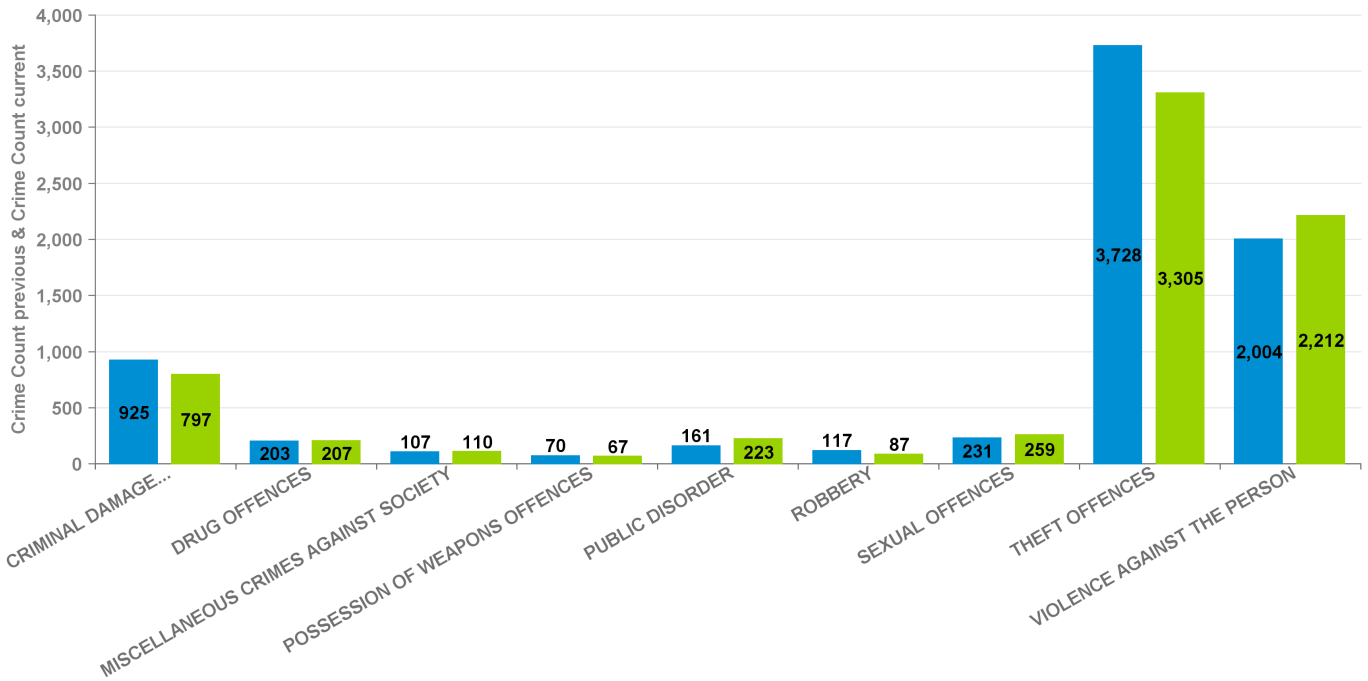
Crime Group	Current 12 mths	Previous 12 mths	+/- Crime	% Change	Number of resolved Crimes	Resolved Rate (past 12mths)
CRIMINAL DAMAGE & ARSON	797	925	-128	-13.84%	118	14.81%
DRUG OFFENCES	207	203	4	1.97%	151	72.95%
MISCELLANEOUS CRIMES AGAINST SOCIETY	110	107	3	2.80%	28	25.45%
POSSESSION OF WEAPONS OFFENCES	67	70	-3	-4.29%	35	52.24%
PUBLIC DISORDER	223	161	62	38.51%	70	31.39%
ROBBERY	87	117	-30	-25.64%	31	35.63%
SEXUAL OFFENCES	259	231	28	12.12%	26	10.04%
THEFT OFFENCES	3,305	3,728	-423	-11.35%	338	10.23%
VIOLENCE AGAINST THE PERSON	2,212	2,004	208	10.38%	462	20.89%



### Previous 12 Months 2016-06 2017-05

#### All Crime

■ Crime Count previous ■ Crime Count current



Crime Tree LV2 Desc

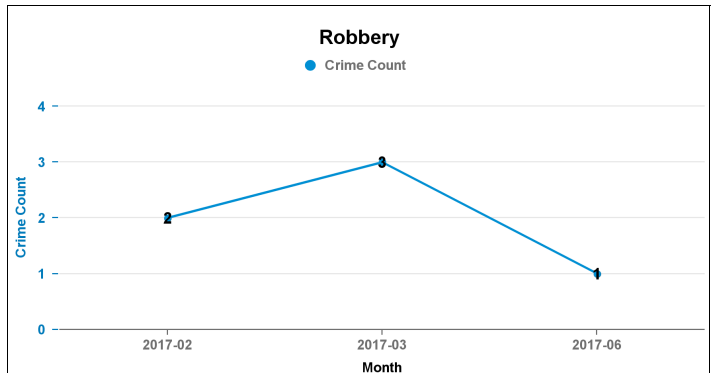
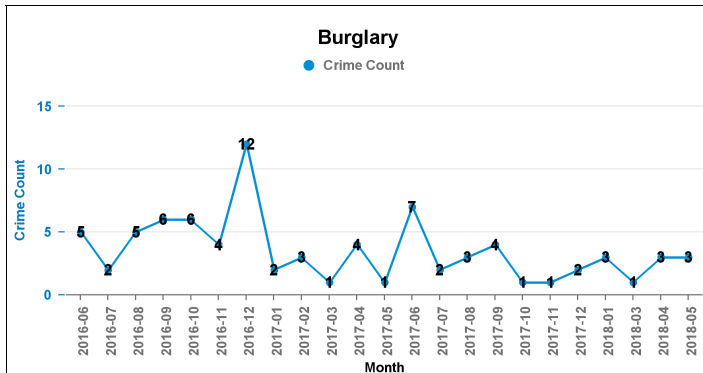
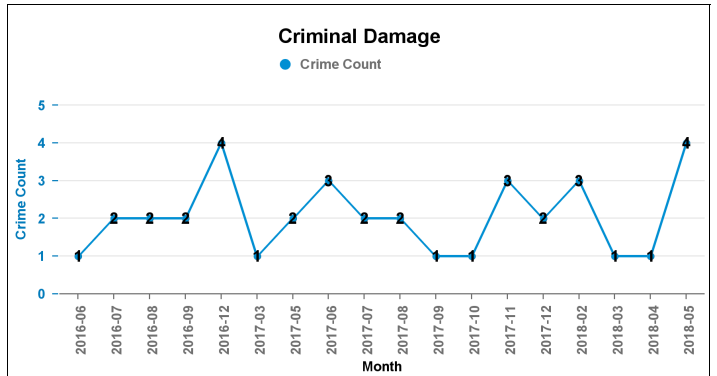
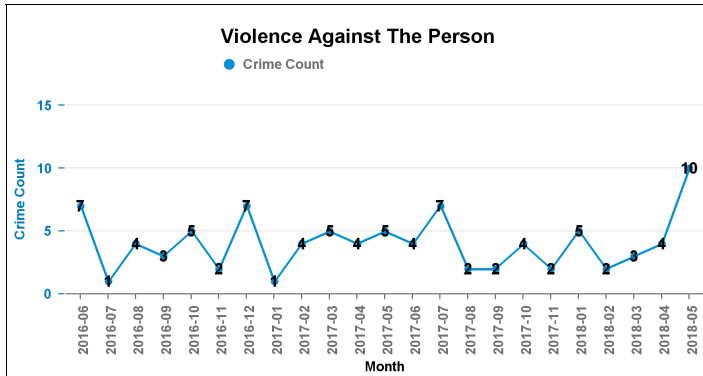
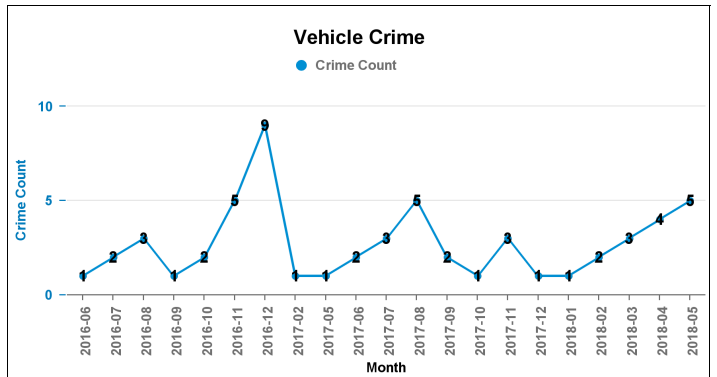
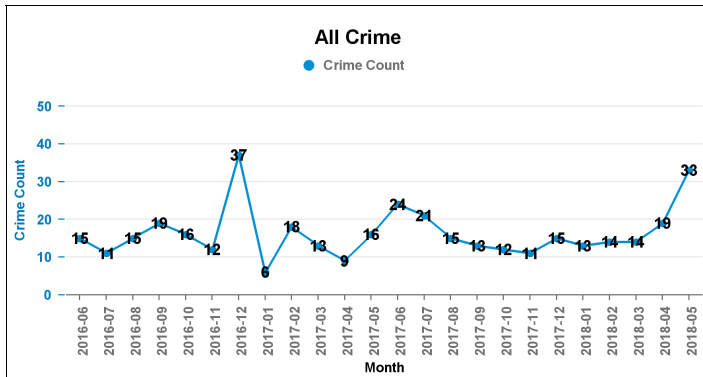
## Crime Reports by CSP Sector and Ward

### Kettering A6 Towns

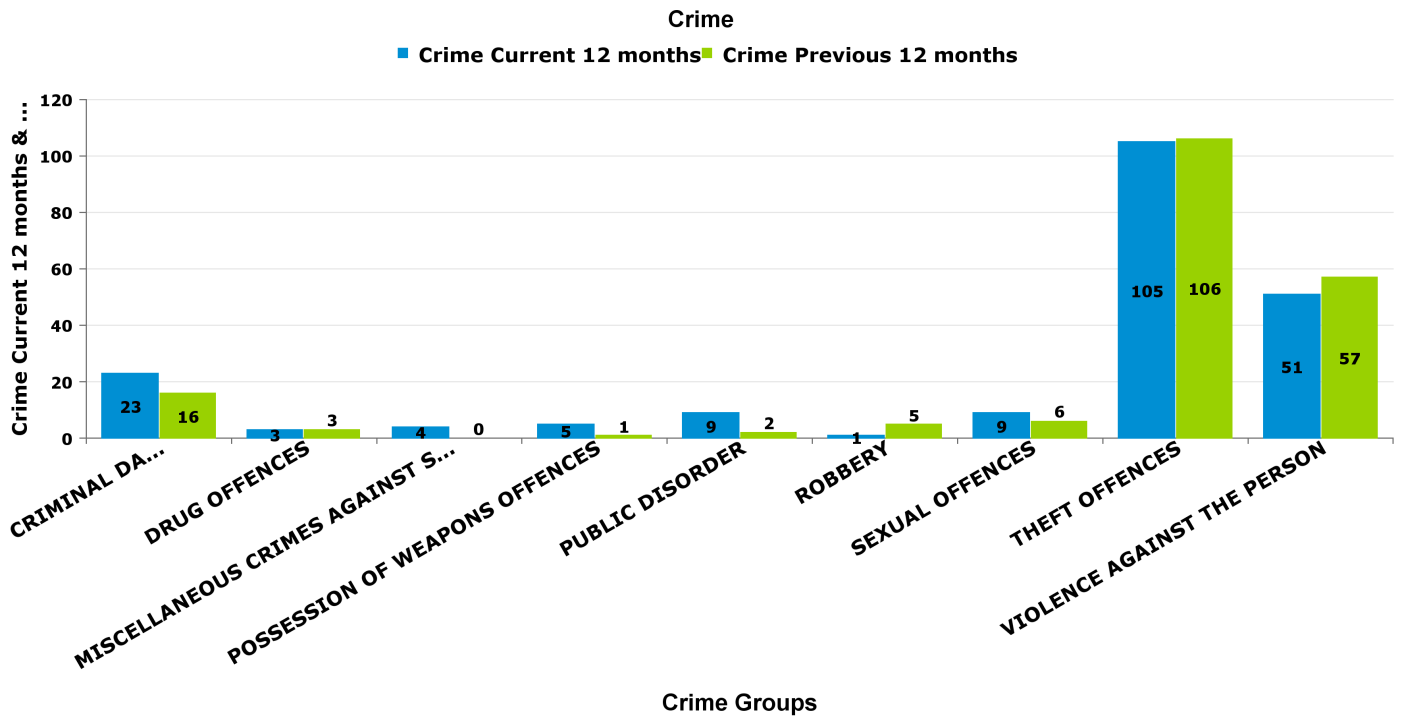
# KETTERING

## BARTON

Crime Group	Current 12 mths	Previous 12 mths	+/- Crime	% Change	Number of resolved Crimes	Resolved Rate (past 12mths)
CRIMINAL DAMAGE & ARSON	23	16	7	43.75%	2	8.70%
DRUG OFFENCES	3	3	0	0.00%	3	100.00%
MISCELLANEOUS CRIMES AGAINST SOCIETY	4	0	4	-100.00%		
POSSESSION OF WEAPONS OFFENCES	5	1	4	400.00%	2	40.00%
PUBLIC DISORDER	9	2	7	350.00%		
ROBBERY	1	5	-4	-80.00%	3	300.00%
SEXUAL OFFENCES	9	6	3	50.00%	1	11.11%
THEFT OFFENCES	105	106	-1	-0.94%	7	6.67%
VIOLENCE AGAINST THE PERSON	51	57	-6	-10.53%	13	25.49%



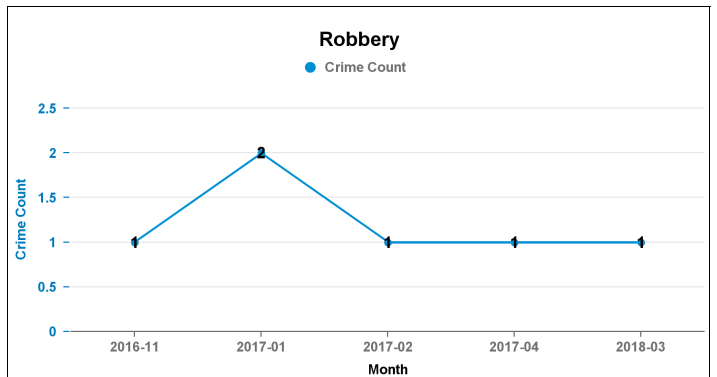
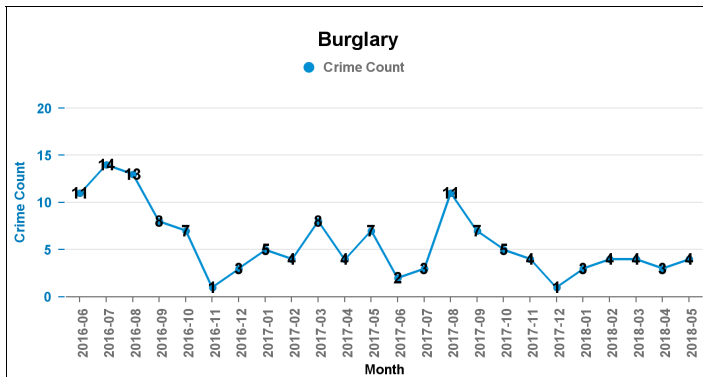
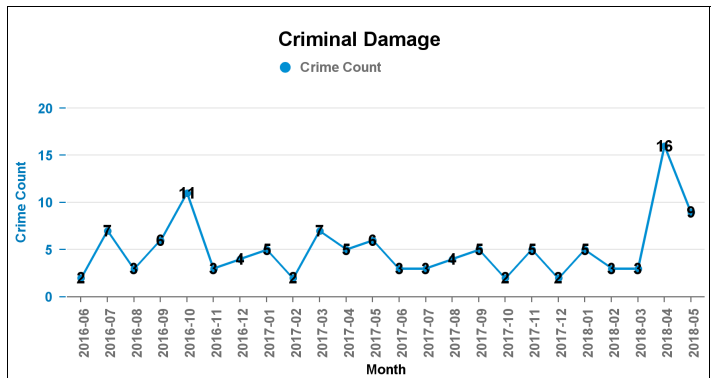
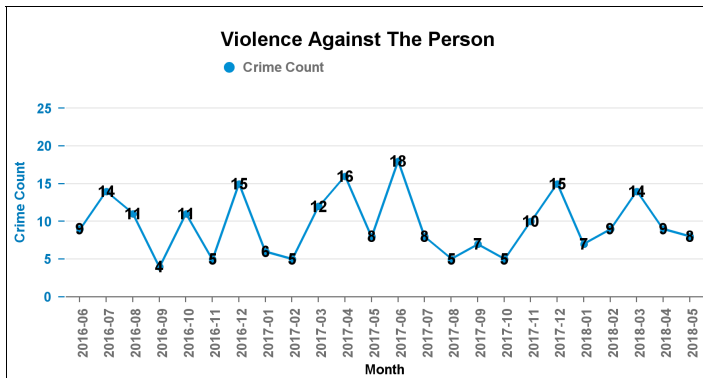
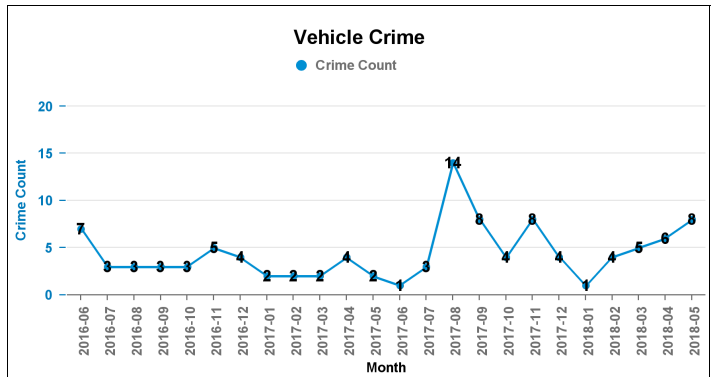
### Crime Reports by CSP Sector and Ward



### Crime Reports by CSP Sector and Ward

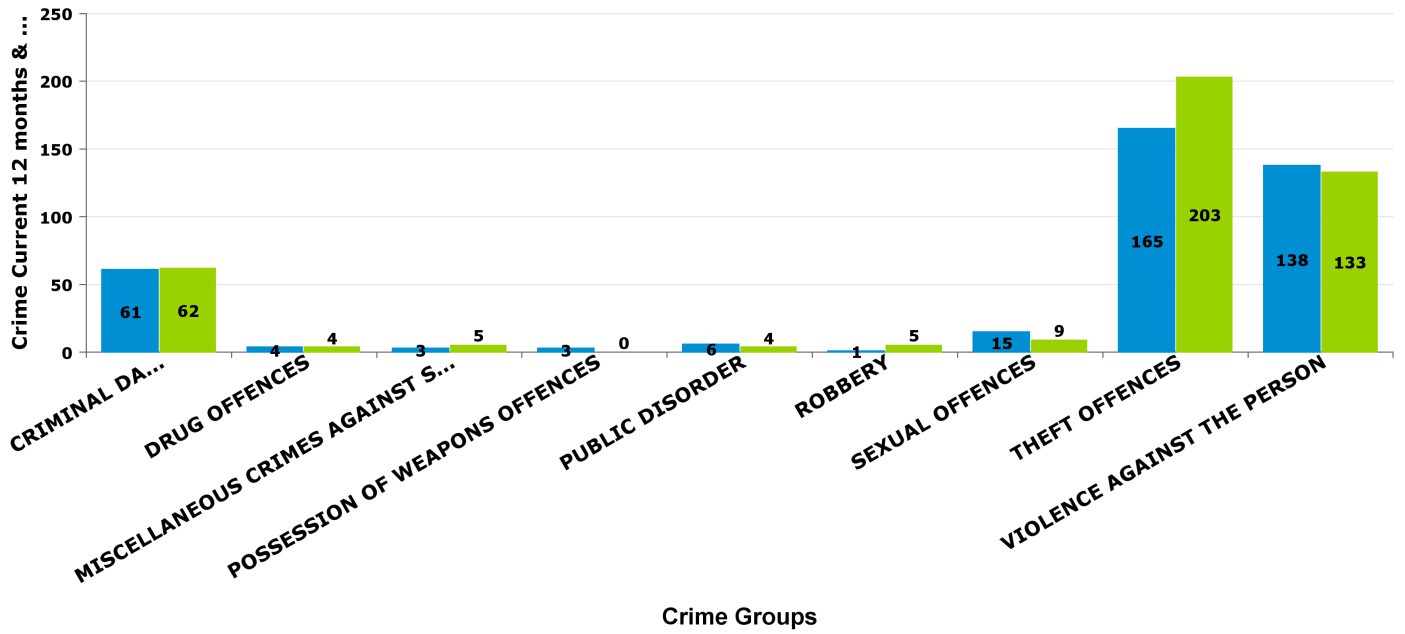
#### BURTON LATIMER

Crime Group	Current 12 mths	Previous 12 mths	+/- Crime	% Change	Number of resolved Crimes	Resolved Rate (past 12mths)
CRIMINAL DAMAGE & ARSON	61	62	-1	-1.61%	6	9.84%
DRUG OFFENCES	4	4	0	0.00%	3	75.00%
MISCELLANEOUS CRIMES AGAINST SOCIETY	3	5	-2	-40.00%	1	33.33%
POSSESSION OF WEAPONS OFFENCES	3	0	3	-100.00%		
PUBLIC DISORDER	6	4	2	50.00%	1	16.67%
ROBBERY	1	5	-4	-80.00%	1	100.00%
SEXUAL OFFENCES	15	9	6	66.67%		
THEFT OFFENCES	165	203	-38	-18.72%	20	12.12%
VIOLENCE AGAINST THE PERSON	138	133	5	3.76%	23	16.67%



### Crime Reports by CSP Sector and Ward Crime

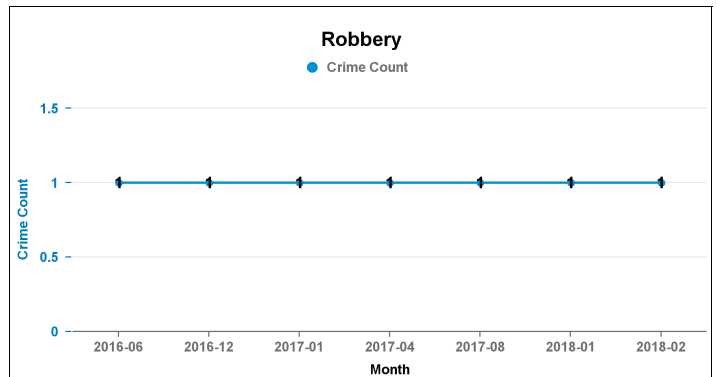
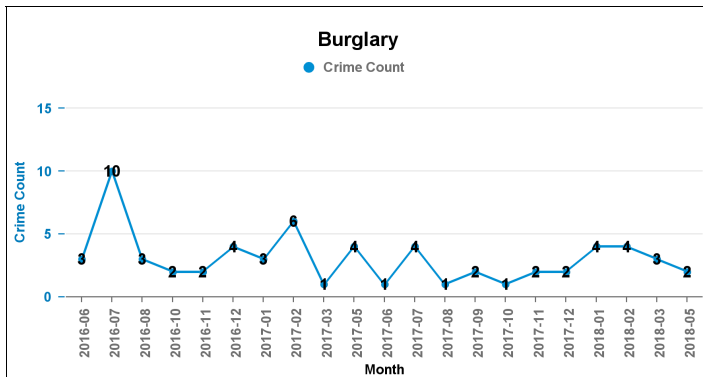
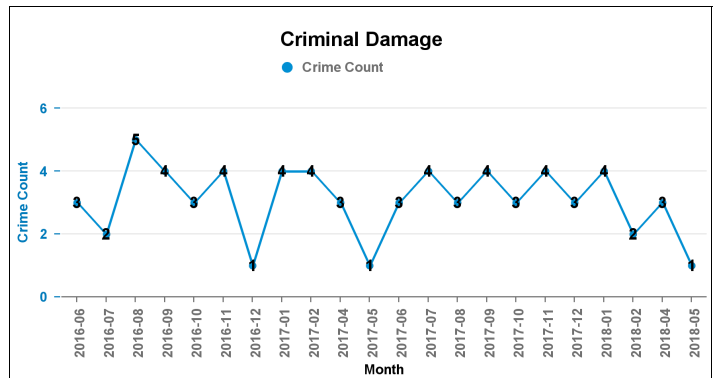
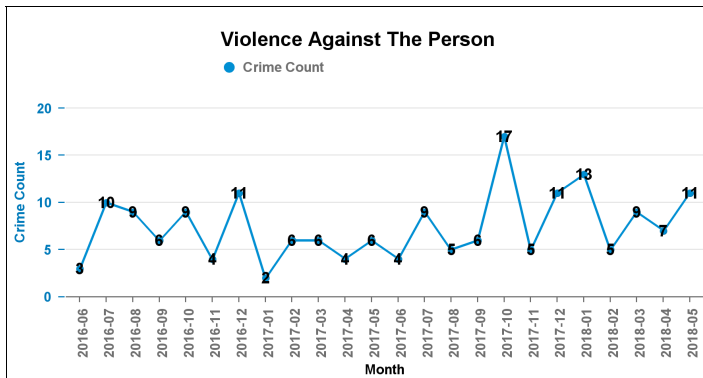
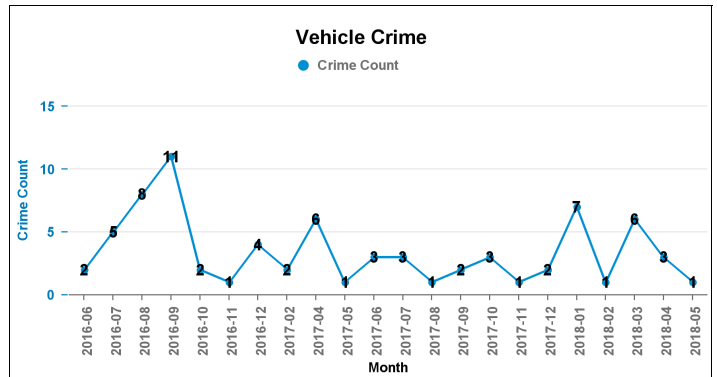
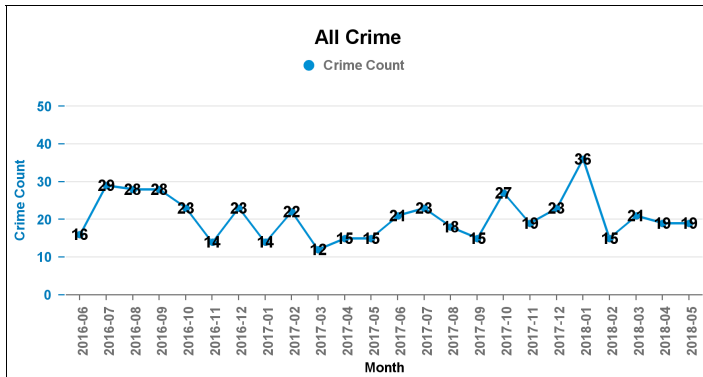
■ Crime Current 12 months ■ Crime Previous 12 months



### Crime Reports by CSP Sector and Ward

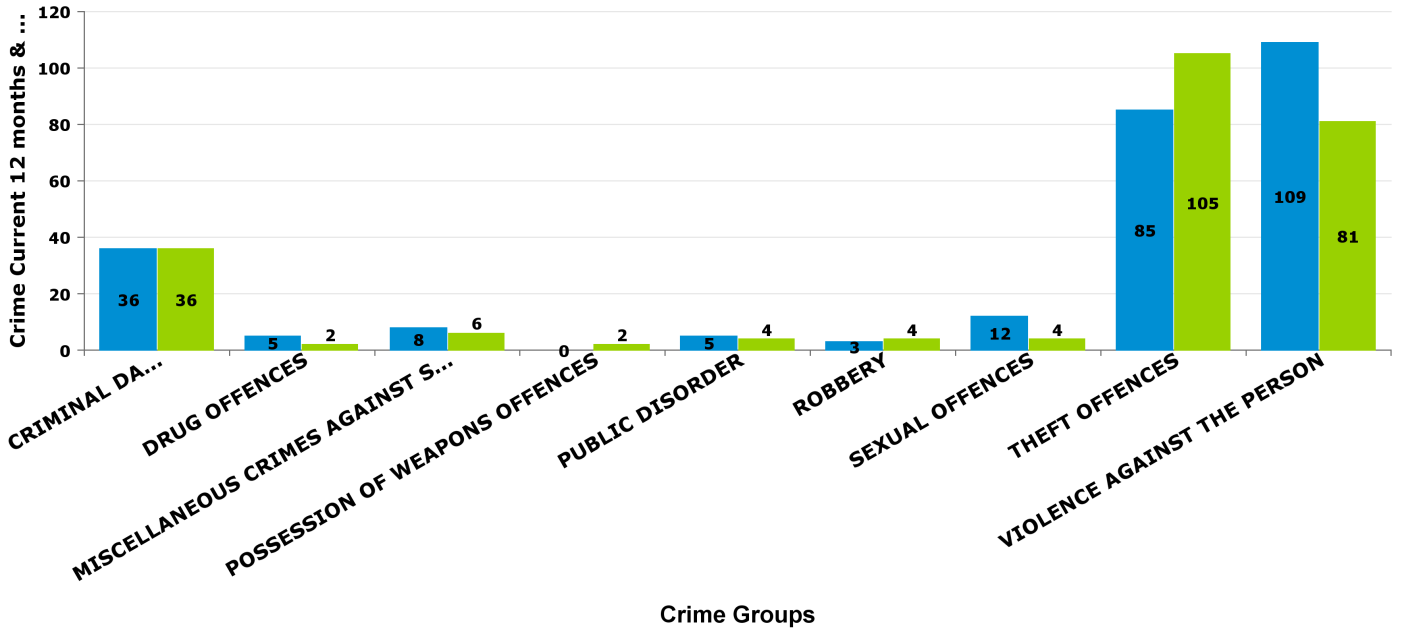
#### DESBOROUGH LOATLAND

Crime Group	Current 12 mths	Previous 12 mths	+/- Crime	% Change	Number of resolved Crimes	Resolved Rate (past 12mths)
CRIMINAL DAMAGE & ARSON	36	36	0	0.00%	1	2.78%
DRUG OFFENCES	5	2	3	150.00%	2	40.00%
MISCELLANEOUS CRIMES AGAINST SOCIETY	8	6	2	33.33%	1	12.50%
POSSESSION OF WEAPONS OFFENCES	0	2	-2	-100.00%		
PUBLIC DISORDER	5	4	1	25.00%	2	40.00%
ROBBERY	3	4	-1	-25.00%		
SEXUAL OFFENCES	12	4	8	200.00%	1	8.33%
THEFT OFFENCES	85	105	-20	-19.05%		
VIOLENCE AGAINST THE PERSON	109	81	28	34.57%	26	23.85%



### Crime Reports by CSP Sector and Ward Crime

■ Crime Current 12 months ■ Crime Previous 12 months

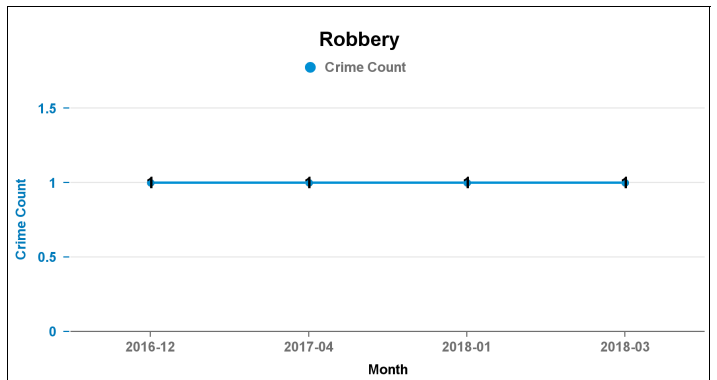
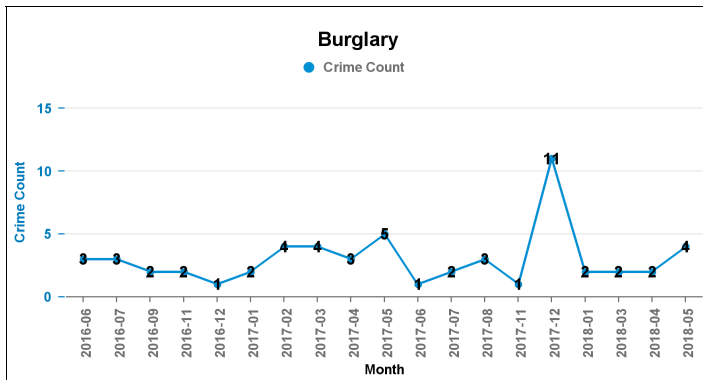
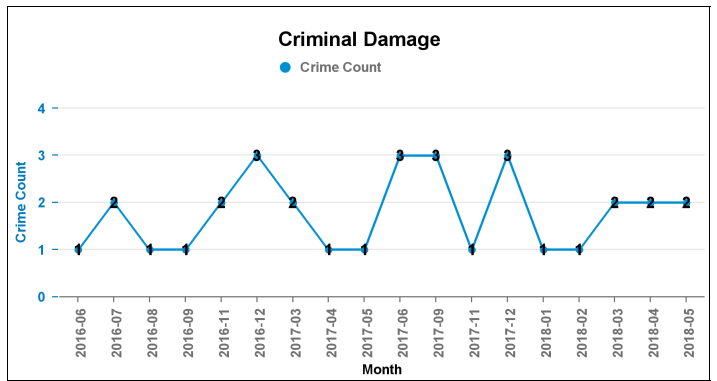
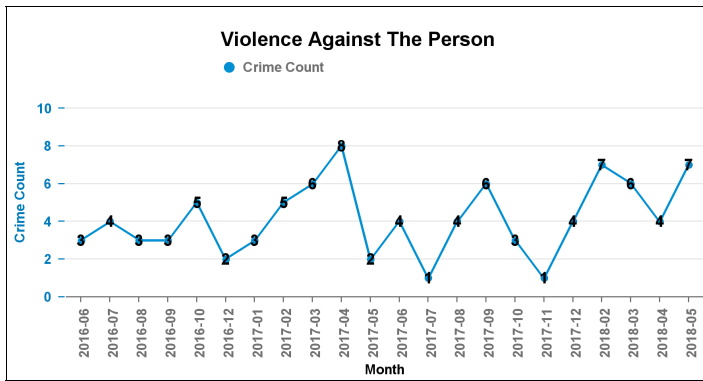
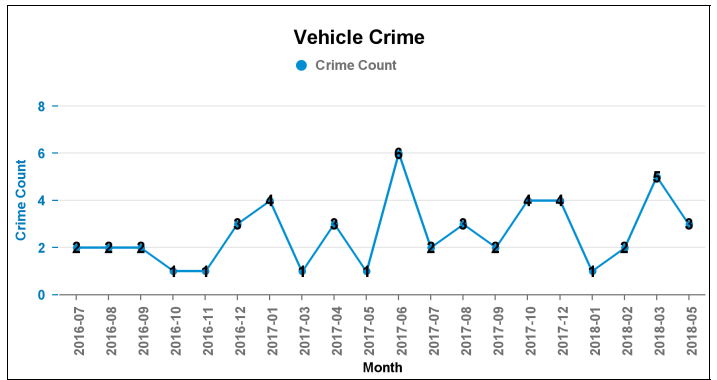
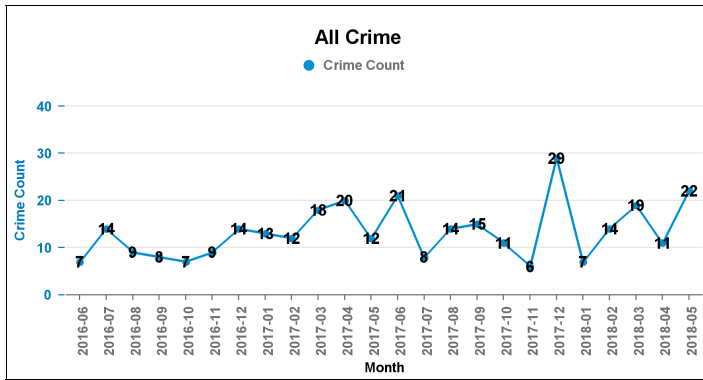




### Crime Reports by CSP Sector and Ward

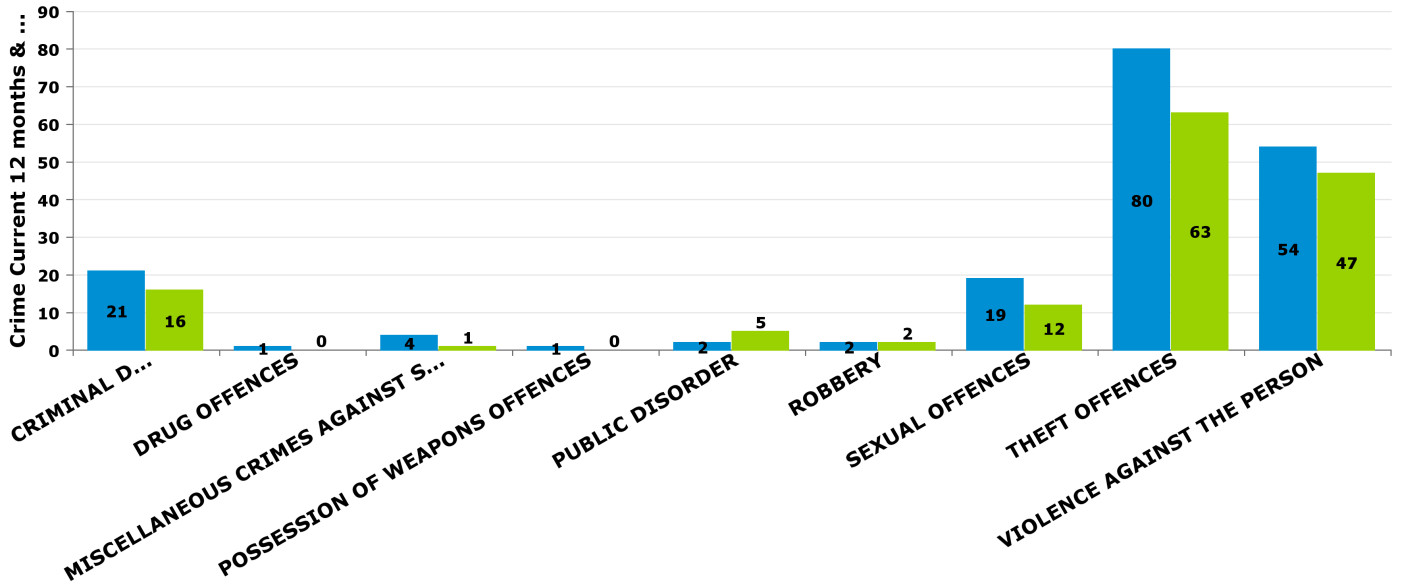
#### DESBOROUGH ST GILES

Crime Group	Current 12 mths	Previous 12 mths	+/- Crime	% Change	Number of resolved Crimes	Resolved Rate (past 12mths)
CRIMINAL DAMAGE & ARSON	21	16	5	31.25%	1	4.76%
DRUG OFFENCES	1	0	1	-100.00%	1	100.00%
MISCELLANEOUS CRIMES AGAINST SOCIETY	4	1	3	300.00%	1	25.00%
POSSESSION OF WEAPONS OFFENCES	1	0	1	-100.00%		
PUBLIC DISORDER	2	5	-3	-60.00%	1	50.00%
ROBBERY	2	2	0	0.00%	1	50.00%
SEXUAL OFFENCES	19	12	7	58.33%	3	15.79%
THEFT OFFENCES	80	63	17	26.98%		
VIOLENCE AGAINST THE PERSON	54	47	7	14.89%	9	16.67%



### Crime Reports by CSP Sector and Ward Crime

■ Crime Current 12 months ■ Crime Previous 12 months

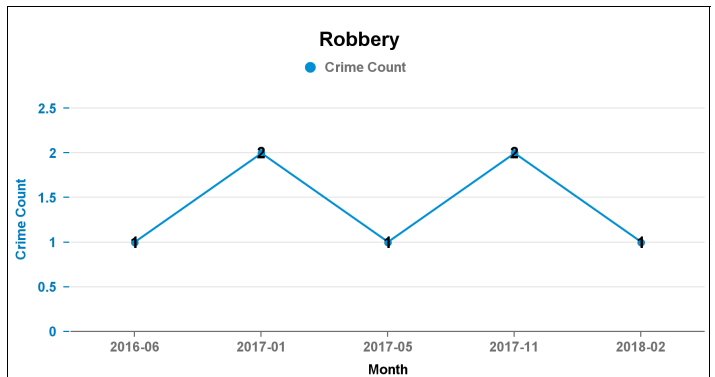
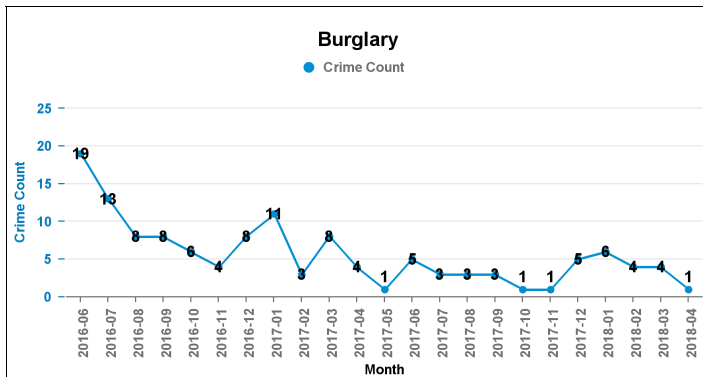
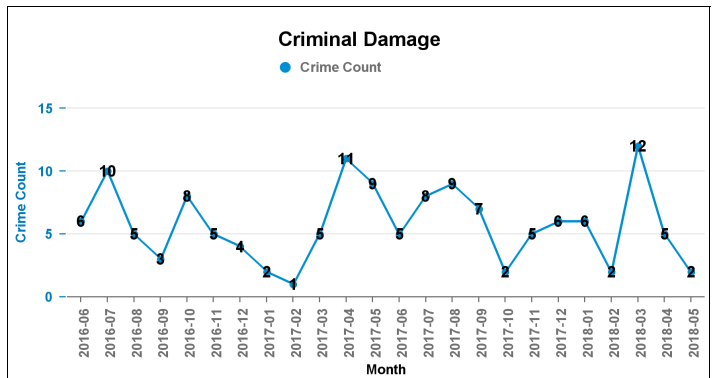
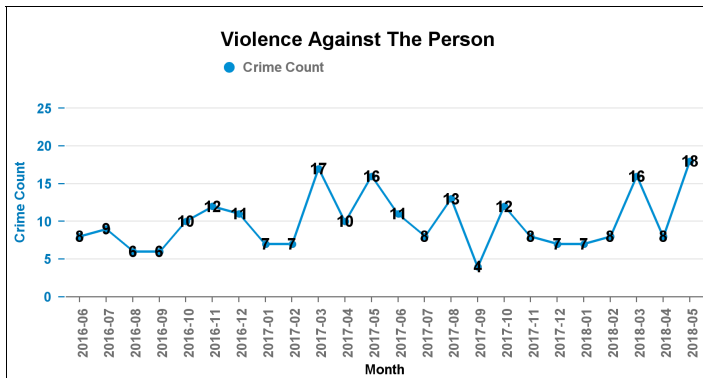
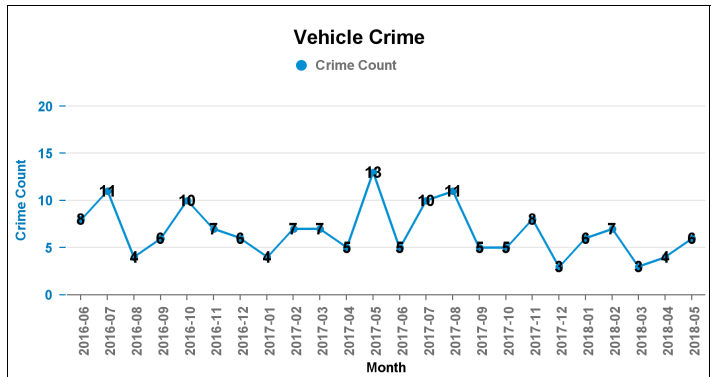
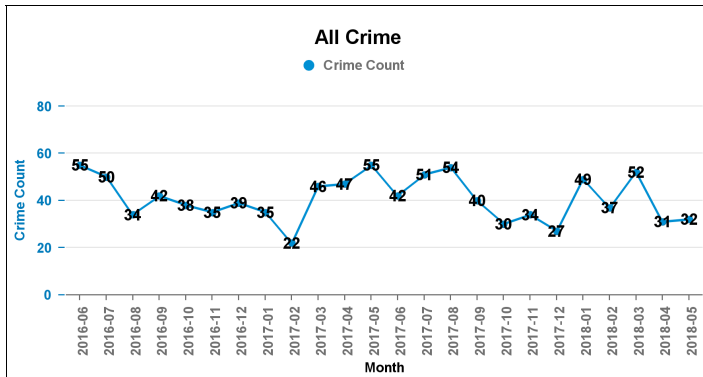


Crime Groups

### Crime Reports by CSP Sector and Ward

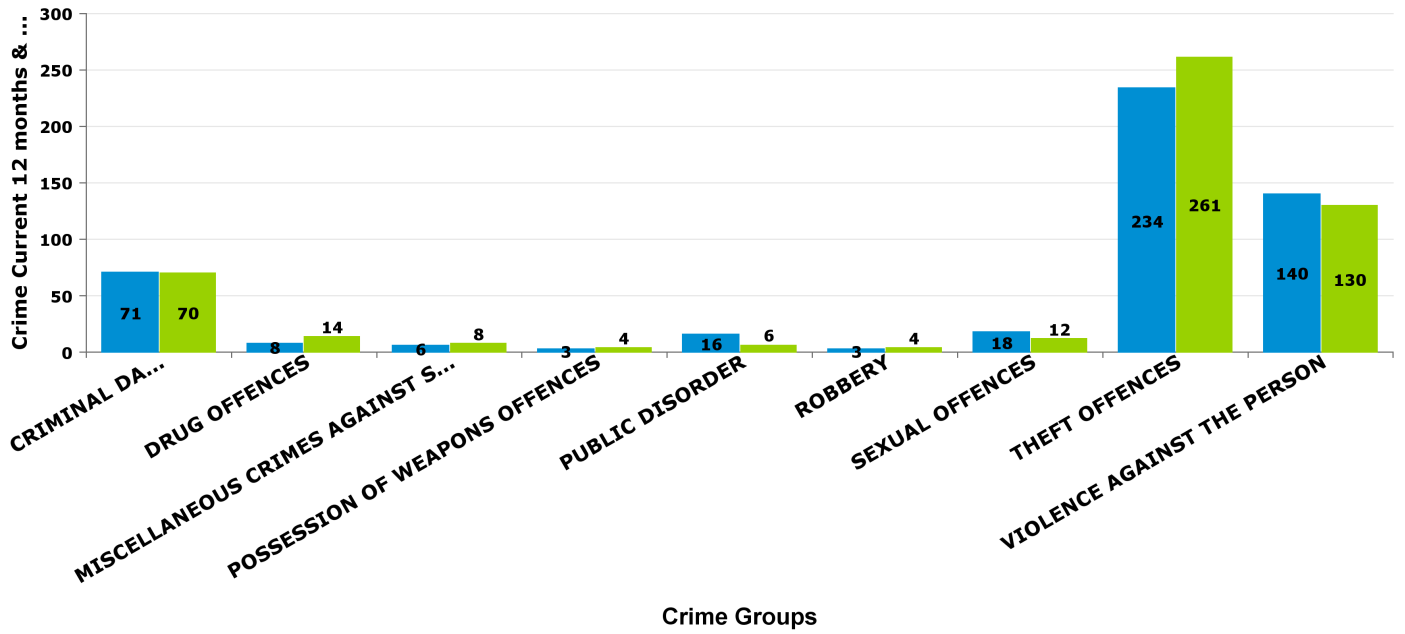
#### ROTHWELL

Crime Group	Current 12 mths	Previous 12 mths	+/- Crime	% Change	Number of resolved Crimes	Resolved Rate (past 12mths)
CRIMINAL DAMAGE & ARSON	71	70	1	1.43%	9	12.68%
DRUG OFFENCES	8	14	-6	-42.86%	5	62.50%
MISCELLANEOUS CRIMES AGAINST SOCIETY	6	8	-2	-25.00%	2	33.33%
POSSESSION OF WEAPONS OFFENCES	3	4	-1	-25.00%	1	33.33%
PUBLIC DISORDER	16	6	10	166.67%	2	12.50%
ROBBERY	3	4	-1	-25.00%		
SEXUAL OFFENCES	18	12	6	50.00%	1	5.56%
THEFT OFFENCES	234	261	-27	-10.34%	8	3.42%
VIOLENCE AGAINST THE PERSON	140	130	10	7.69%	23	16.43%



### Crime Reports by CSP Sector and Ward Crime

■ Crime Current 12 months ■ Crime Previous 12 months



ASB Reports by CSP Sector and Ward

Kettering A6 Towns ASB

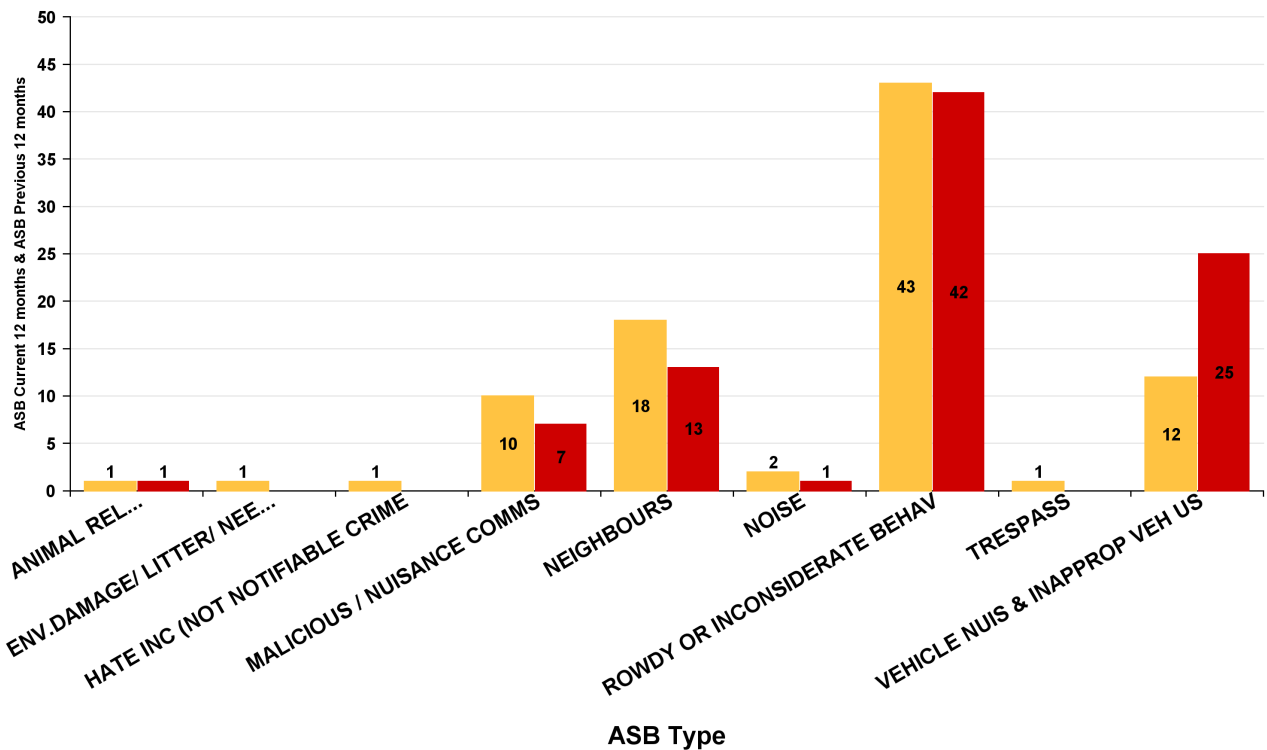
**KETTERING**

**Barton**

ASB Type	Current 12 mths	Previous 12 mths	+/- Crime	% Change
ANIMAL RELATED INC ANTI-SOCIAL	1	1	0	0.00%
ENV.DAMAGE/ LITTER/ NEEDLES	1		1	-100.00%
HATE INC (NOT NOTIFIABLE CRIME	1		1	-100.00%
MALICIOUS / NUISANCE COMMS	10	7	3	42.86%
NEIGHBOURS	18	13	5	38.46%
NOISE	2	1	1	100.00%
ROWDY OR INCONSIDERATE BEHAV	43	42	1	2.38%
TRESPASS	1		1	-100.00%
VEHICLE NUIS & INAPPROP VEH US	12	25	-13	-52.00%
<b>Sum:</b>	<b>89</b>	<b>89</b>	<b>0</b>	<b>0.00%</b>

**ASB**

■ ASB Current 12 months ■ ASB Previous 12 months



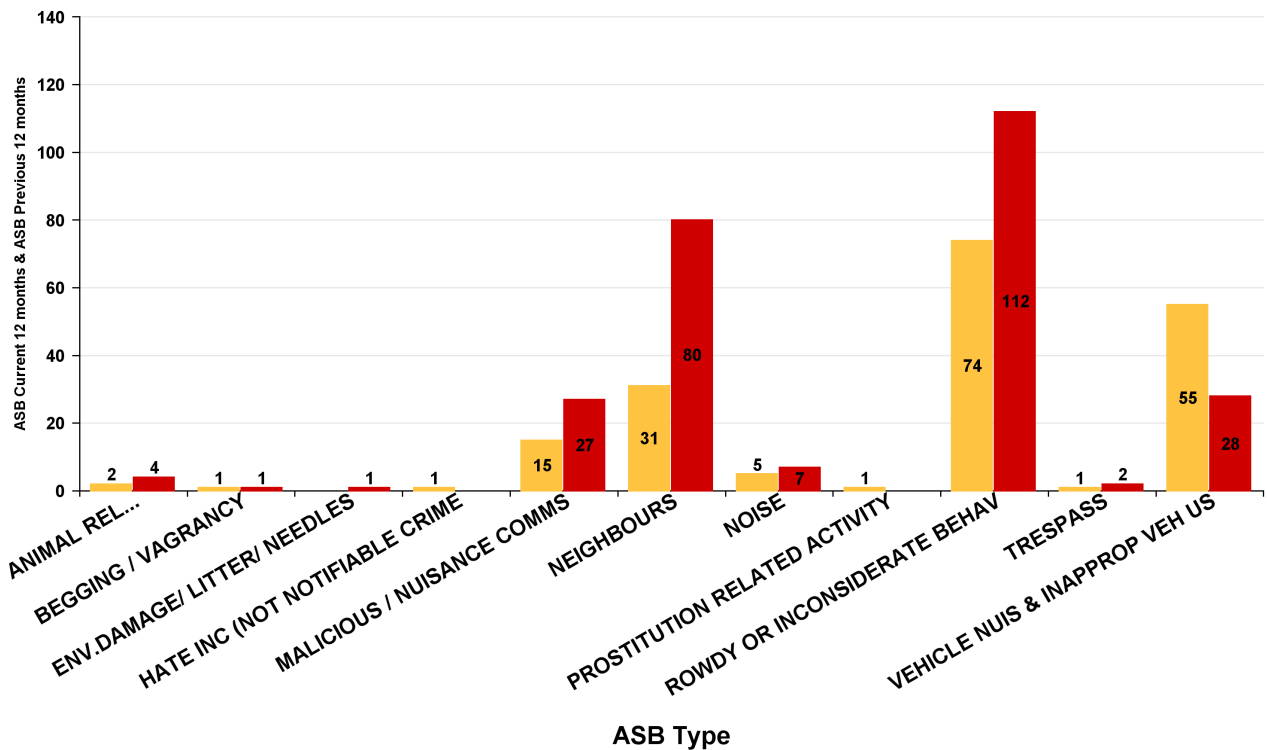
### ASB Reports by CSP Sector and Ward

#### Burton Latimer

ASB Type	Current 12 mths	Previous 12 mths	+/- Crime	% Change
ANIMAL RELATED INC ANTI-SOCIAL	2	4	-2	-50.00%
BEGGING / VAGRANCY	1	1	0	0.00%
ENV.DAMAGE/ LITTER/ NEEDLES		1	-1	-100.00%
HATE INC (NOT NOTIFIABLE CRIME	1		1	-100.00%
MALICIOUS / NUISANCE COMMS	15	27	-12	-44.44%
NEIGHBOURS	31	80	-49	-61.25%
NOISE	5	7	-2	-28.57%
PROSTITUTION RELATED ACTIVITY	1		1	-100.00%
ROWDY OR INCONSIDERATE BEHAV	74	112	-38	-33.93%
TRESPASS	1	2	-1	-50.00%
VEHICLE NUIS & INAPPROP VEH US	55	28	27	96.43%
<b>Sum:</b>	<b>186</b>	<b>262</b>	<b>-76</b>	<b>-29.01%</b>

#### ASB

■ ASB Current 12 months ■ ASB Previous 12 months



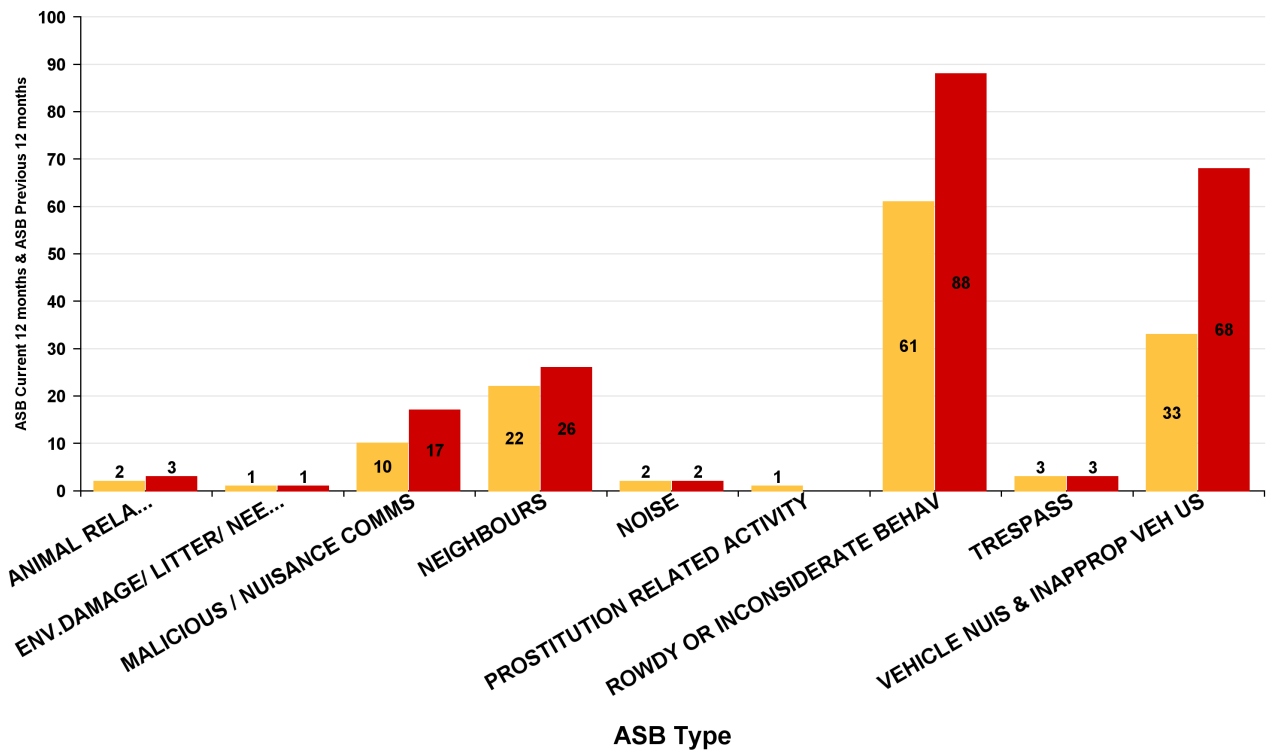
### ASB Reports by CSP Sector and Ward

#### Desborough Loatland

ASB Type	Current 12 mths	Previous 12 mths	+/- Crime	% Change
ANIMAL RELATED INC ANTI-SOCIAL	2	3	-1	-33.33%
ENV.DAMAGE/ LITTER/ NEEDLES	1	1	0	0.00%
MALICIOUS / NUISANCE COMMS	10	17	-7	-41.18%
NEIGHBOURS	22	26	-4	-15.38%
NOISE	2	2	0	0.00%
PROSTITUTION RELATED ACTIVITY	1		1	-100.00%
ROWDY OR INCONSIDERATE BEHAV	61	88	-27	-30.68%
TRESPASS	3	3	0	0.00%
VEHICLE NUIS & INAPPROP VEH US	33	68	-35	-51.47%
<b>Sum:</b>	<b>135</b>	<b>208</b>	<b>-73</b>	<b>-35.10%</b>

#### ASB

■ ASB Current 12 months ■ ASB Previous 12 months



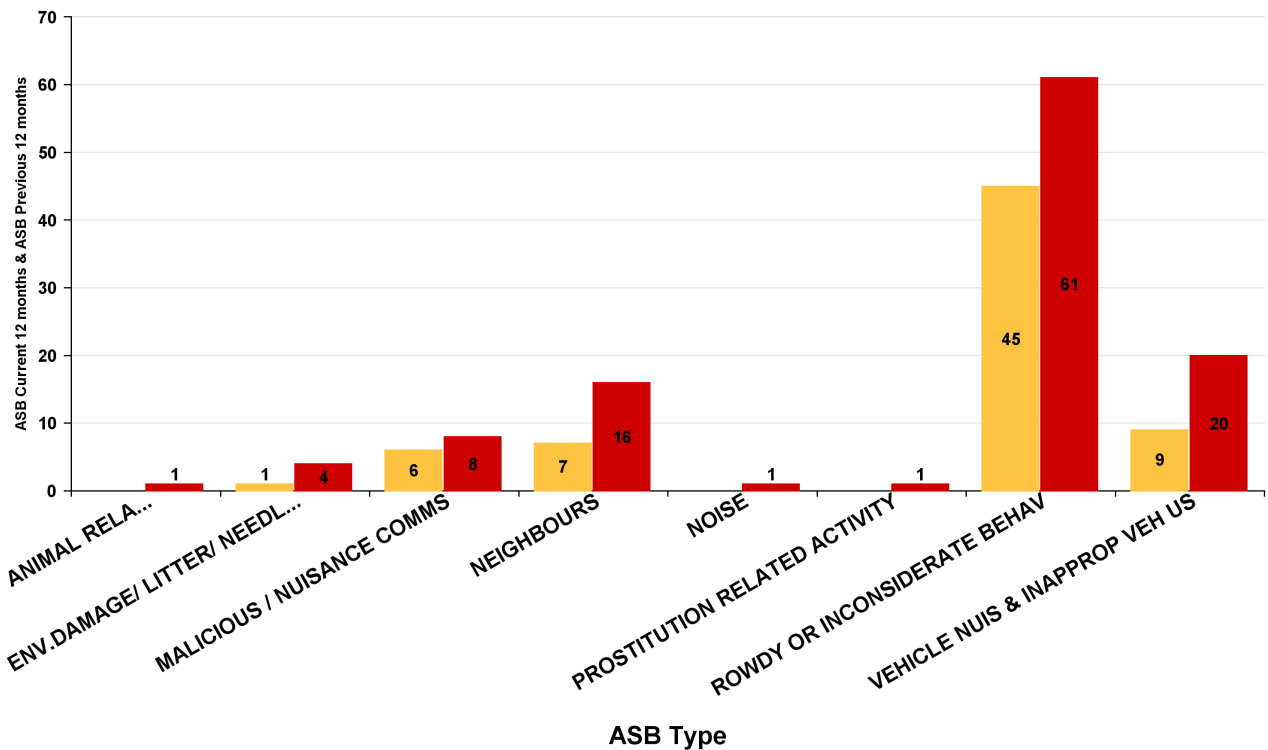
## ASB Reports by CSP Sector and Ward

### Desborough St Giles

ASB Type	Current 12 mths	Previous 12 mths	+/- Crime	% Change
ANIMAL RELATED INC ANTI-SOCIAL		1	-1	-100.00%
ENV.DAMAGE/ LITTER/ NEEDLES	1	4	-3	-75.00%
MALICIOUS / NUISANCE COMMS	6	8	-2	-25.00%
NEIGHBOURS	7	16	-9	-56.25%
NOISE		1	-1	-100.00%
PROSTITUTION RELATED ACTIVITY		1	-1	-100.00%
ROWDY OR INCONSIDERATE BEHAV	45	61	-16	-26.23%
VEHICLE NUIS & INAPPROP VEH US	9	20	-11	-55.00%
<b>Sum:</b>	<b>68</b>	<b>112</b>	<b>-44</b>	<b>-39.29%</b>

### ASB

■ ASB Current 12 months ■ ASB Previous 12 months





### ASB Reports by CSP Sector and Ward

#### Rothwell

ASB Type	Current 12 mths	Previous 12 mths	+/- Crime	% Change
ANIMAL RELATED INC ANTI-SOCIAL	3	6	-3	-50.00%
BEGGING / VAGRANCY	1	1	0	0.00%
ENV.DAMAGE/ LITTER/ NEEDLES	5	3	2	66.67%
MALICIOUS / NUISANCE COMMS	13	14	-1	-7.14%
NEIGHBOURS	33	58	-25	-43.10%
NOISE	7	2	5	250.00%
ROWDY OR INCONSIDERATE BEHAV	138	138	0	0.00%
TRESPASS	1	2	-1	-50.00%
VEHICLE NUIS & INAPPROP VEH US	40	65	-25	-38.46%
<b>Sum:</b>	<b>241</b>	<b>289</b>	<b>-48</b>	<b>-16.61%</b>

#### ASB

■ ASB Current 12 months ■ ASB Previous 12 months

