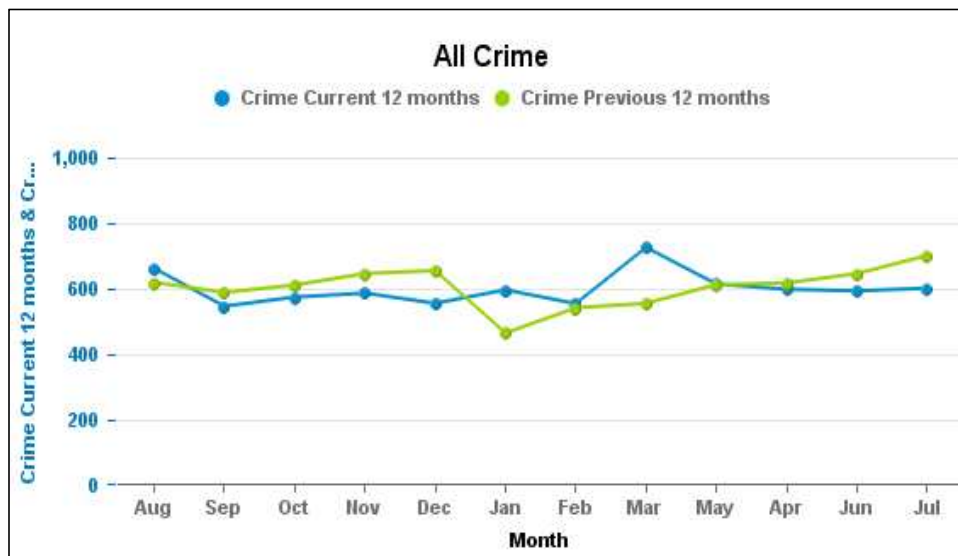


Crime Reports by CSP Sector and Ward

Kettering Borough

Crime Group	Current 12 Months 2017-01 2017-12	Previous 12 Months 2016-01 2016-12	+/- Crime	% Change	Number of resolved Crimes	Resolved Rate (past 12mths)
CRIMINAL DAMAGE & ARSON	816	981	-165	-16.82%	112	13.73%
DRUG OFFENCES	166	187	-21	-11.23%	119	71.69%
MISCELLANEOUS CRIMES AGAINST SOCIETY	108	96	12	12.50%	32	29.63%
POSSESSION OF WEAPONS OFFENCES	68	53	15	28.30%	39	57.35%
PUBLIC DISORDER	197	145	52	35.86%	62	31.47%
ROBBERY	103	106	-3	-2.83%	31	30.10%
SEXUAL OFFENCES	267	200	67	33.50%	29	10.86%
THEFT OFFENCES	3403	3589	-186	-5.18%	396	11.64%
VIOLENCE AGAINST THE PERSON	2065	1886	179	9.49%	447	21.65%

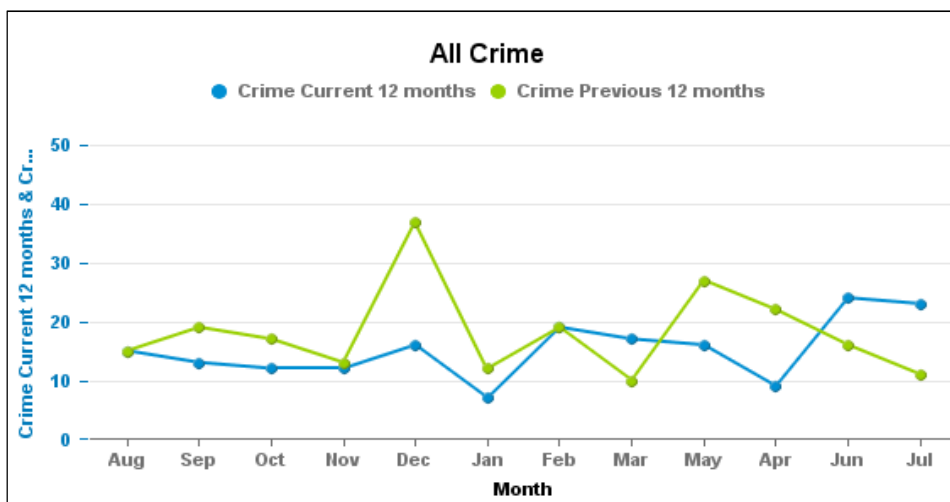


Crime Reports by CSP Sector and Ward

Kettering A6 Towns

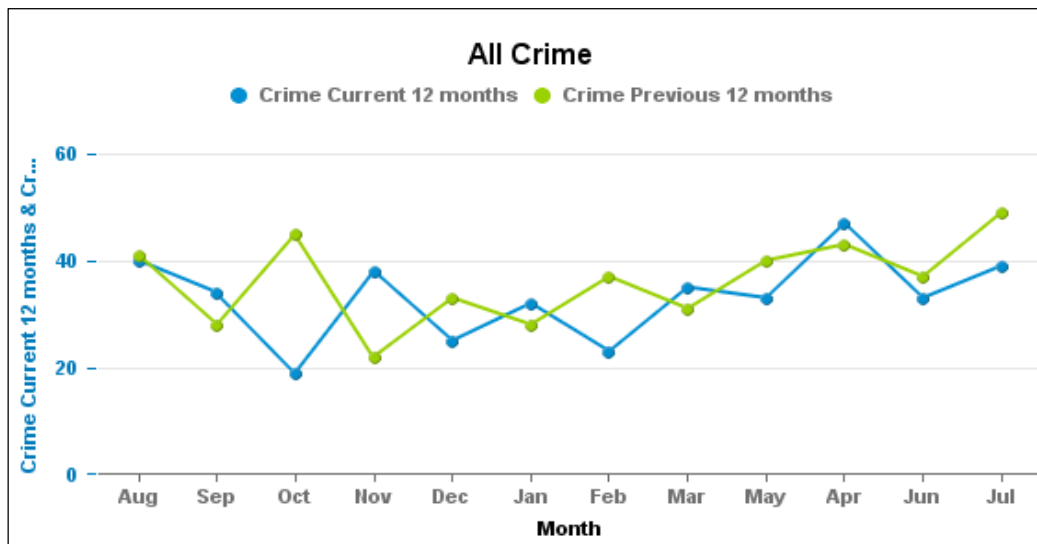
BARTON

Crime Group	Current 12 Months 2017-01 2017-12	Previous 12 Months 2016-01 2016-12	+/- Crime	% Change	Number of resolved Crimes	Resolved Rate (past 12mths)
CRIMINAL DAMAGE & ARSON	17	25	-8	-32.00%	1	5.88%
DRUG OFFENCES	1	3	-2	-66.67%	1	100.00%
MISCELLANEOUS CRIMES AGAINST SOCIETY	2	1	1	100.00%		
POSSESSION OF WEAPONS OFFENCES	3	1	2	200.00%	1	33.33%
PUBLIC DISORDER	6	1	5	500.00%	1	16.67%
ROBBERY	6	0	6	-100.00%		
SEXUAL OFFENCES	11	5	6	120.00%	1	9.09%
THEFT OFFENCES	87	128	-41	-32.03%	7	8.05%
VIOLENCE AGAINST THE PERSON	50	54	-4	-7.41%	16	32.00%



BURTON LATIMER

Crime Group	Current 12 Months 2017-01 2017-12	Previous 12 Months 2016-01 2016-12	+/- Crime	% Change	Number of resolved Crimes	Resolved Rate (past 12mths)
CRIMINAL DAMAGE & ARSON	49	68	-19	-27.94%	8	16.33%
DRUG OFFENCES	5	3	2	66.67%	3	60.00%
MISCELLANEOUS CRIMES AGAINST SOCIETY	3	6	-3	-50.00%	1	33.33%
POSSESSION OF WEAPONS OFFENCES	2	0	2	-100.00%		
PUBLIC DISORDER	6	4	2	50.00%	1	16.67%
ROBBERY	4	4	0	0.00%	1	25.00%
SEXUAL OFFENCES	16	12	4	33.33%		
THEFT OFFENCES	180	211	-31	-14.69%	23	12.78%
VIOLENCE AGAINST THE PERSON	133	126	7	5.56%	29	21.80%



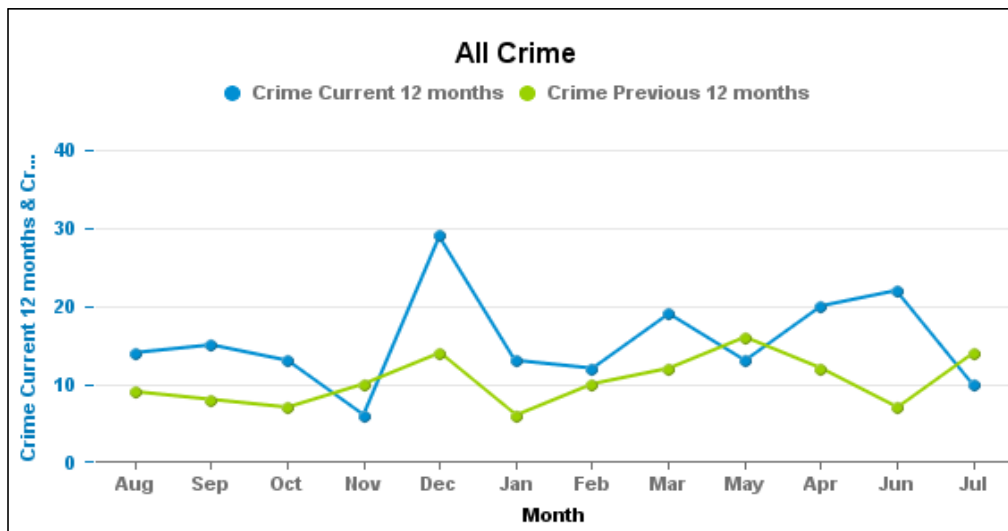
DESBOROUGH LOATLAND

Crime Group	Current 12 Months 2017-01 2017-12	Previous 12 Months 2016-01 2016-12	+/- Crime	% Change	Number of resolved Crimes	Resolved Rate (past 12mths)
CRIMINAL DAMAGE & ARSON	37	40	-3	-7.50%	4	10.81%
DRUG OFFENCES	3	2	1	50.00%	1	33.33%
MISCELLANEOUS CRIMES AGAINST SOCIETY	4	6	-2	-33.33%	1	25.00%
POSSESSION OF WEAPONS OFFENCES	1	1	0	0.00%		
PUBLIC DISORDER	5	4	1	25.00%	2	40.00%
ROBBERY	3	5	-2	-40.00%		
SEXUAL OFFENCES	8	6	2	33.33%	3	37.50%
THEFT OFFENCES	84	102	-18	-17.65%	1	1.19%
VIOLENCE AGAINST THE PERSON	88	74	14	18.92%	25	28.41%



DESBOROUGH ST GILES

Crime Group	Current 12 Months 2017-01 2017-12	Previous 12 Months 2016-01 2016-12	+/- Crime	% Change	Number of resolved Crimes	Resolved Rate (past 12mths)
CRIMINAL DAMAGE & ARSON	17	18	-1	-5.56%	1	5.88%
DRUG OFFENCES	1	0	1	-100.00%		
MISCELLANEOUS CRIMES AGAINST SOCIETY	4	0	4	-100.00%	1	25.00%
POSSESSION OF WEAPONS OFFENCES	1	0	1	-100.00%		
PUBLIC DISORDER	3	5	-2	-40.00%	2	66.67%
ROBBERY	1	1	0	0.00%		
SEXUAL OFFENCES	20	9	11	122.22%	2	10.00%
THEFT OFFENCES	85	53	32	60.38%	1	1.18%
VIOLENCE AGAINST THE PERSON	54	39	15	38.46%	9	16.67%



ROTHWELL

Crime Group	Current 12 Months 2017-01 2017-12	Previous 12 Months 2016-01 2016-12	+/- Crime	% Change	Number of resolved Crimes	Resolved Rate (past 12mths)
CRIMINAL DAMAGE & ARSON	72	80	-8	-10.00%	7	9.72%
DRUG OFFENCES	4	15	-11	-73.33%	4	100.00%
MISCELLANEOUS CRIMES AGAINST SOCIETY	6	11	-5	-45.45%	3	50.00%
POSSESSION OF WEAPONS OFFENCES	3	3	0	0.00%	2	66.67%
PUBLIC DISORDER	11	6	5	83.33%	1	9.09%
ROBBERY	5	3	2	66.67%	2	40.00%
SEXUAL OFFENCES	17	5	12	240.00%	2	11.76%
THEFT OFFENCES	245	276	-31	-11.23%	12	4.90%
VIOLENCE AGAINST THE PERSON	132	124	8	6.45%	20	15.15%



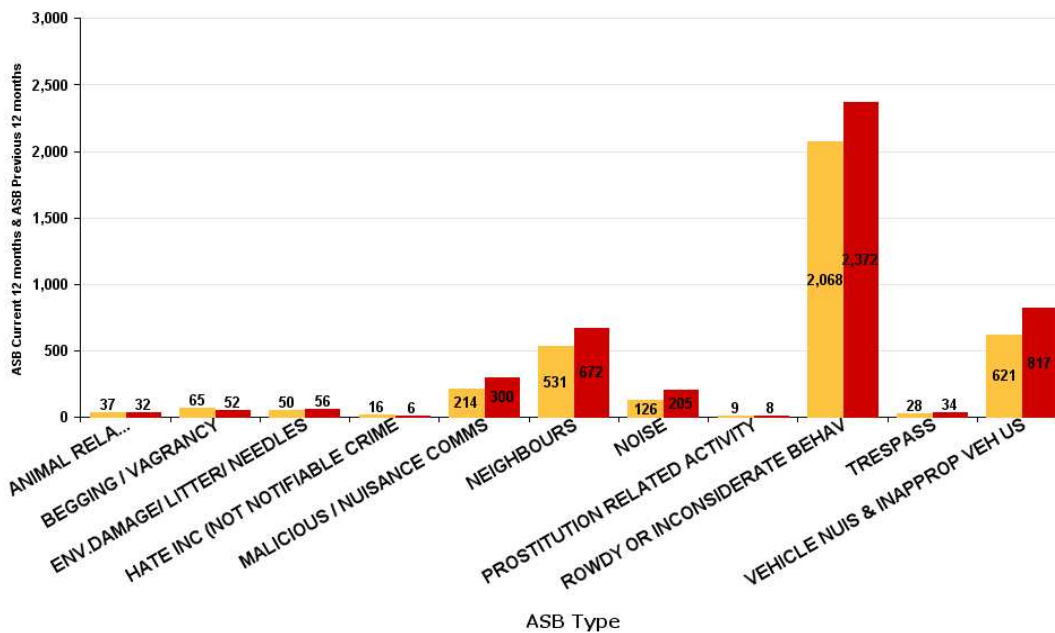
ASB Reports by CSP Sector and Ward

Kettering Borough

ASB Type	Current 12 Months 2017-01 2017-12	Previous 12 Months 2016-01 2016-12	+ / - Crime	% Change
ANIMAL RELATED INC ANTI-SOCIAL	37	32	5	15.63%
BEGGING / VAGRANCY	65	52	13	25.00%
ENV.DAMAGE/ LITTER/ NEEDLES	50	56	-6	-10.71%
HATE INC (NOT NOTIFIABLE CRIME	16	6	10	166.67%
MALICIOUS / NUISANCE COMMS	214	300	-86	-28.67%
NEIGHBOURS	531	672	-141	-20.98%
NOISE	126	205	-79	-38.54%
PROSTITUTION RELATED ACTIVITY	9	8	1	12.50%
ROWDY OR INCONSIDERATE BEHAV	2068	2372	-304	-12.82%
TRESPASS	28	34	-6	-17.65%
VEHICLE NUIS & INAPPROP VEH US	621	817	-196	-23.99%
Sum:	3765	4554	-789	-17.33%

ASB

■ ASB Current 12 months ■ ASB Previous 12 months



ASB Reports by CSP Sector and Ward

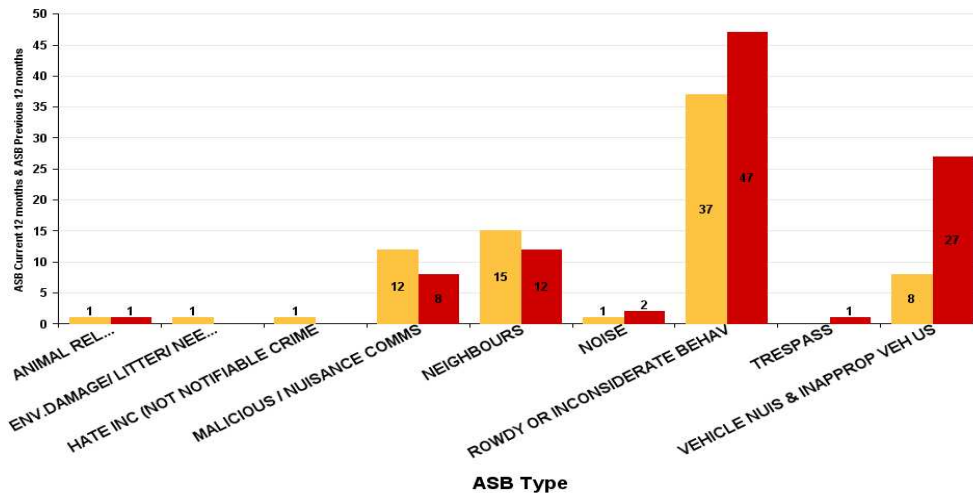
Kettering A6 Towns ASB

Barton

ASB Type	Current 12 Months 2017-01 2017-12	Previous 12 Months 2016-01 2016-12	+/- Crime	% Change
ANIMAL RELATED INC ANTI-SOCIAL	1	1	0	0.00%
ENV.DAMAGE/ LITTER/ NEEDLES	1		1	-100.00%
HATE INC (NOT NOTIFIABLE CRIME	1		1	-100.00%
MALICIOUS / NUISANCE COMMS	12	8	4	50.00%
NEIGHBOURS	15	12	3	25.00%
NOISE	1	2	-1	-50.00%
ROWDY OR INCONSIDERATE BEHAV	37	47	-10	-21.28%
TRESPASS		1	-1	-100.00%
VEHICLE NUIS & INAPPROP VEH US	8	27	-19	-70.37%
Sum:	76	98	-22	-22.45%

ASB

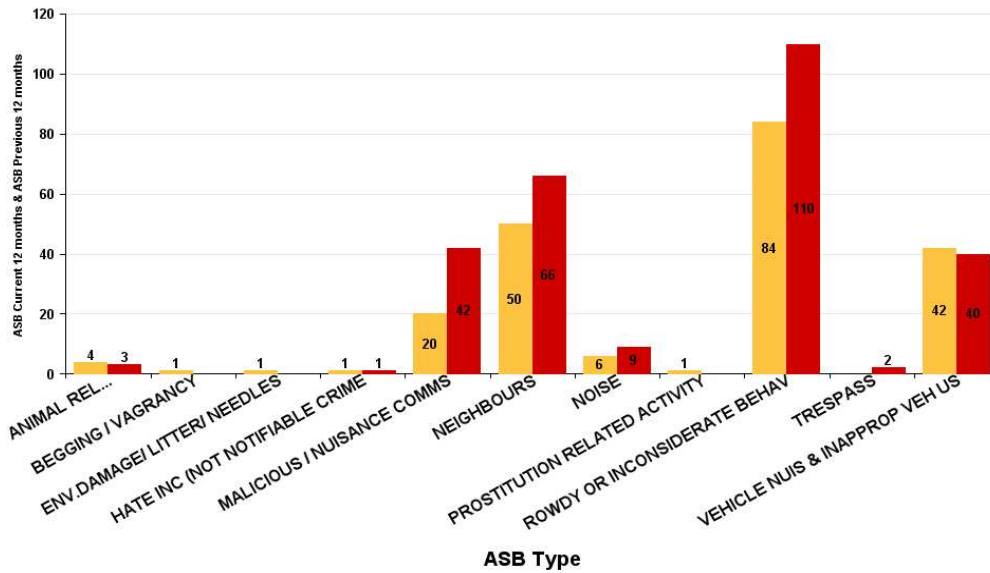
ASB Current 12 months ASB Previous 12 months



ASB Type	Current 12 Months 2017-01 2017-12	Previous 12 Months 2016-01 2016-12	+/- Crime	% Change
ANIMAL RELATED INC ANTI-SOCIAL	4	3	1	33.33%
BEGGING / VAGRANCY	1		1	-100.00%
ENV.DAMAGE/ LITTER/ NEEDLES	1		1	-100.00%
HATE INC (NOT NOTIFIABLE CRIME	1	1	0	0.00%
MALICIOUS / NUISANCE COMMS	20	42	-22	-52.38%
NEIGHBOURS	50	66	-16	-24.24%
NOISE	6	9	-3	-33.33%
PROSTITUTION RELATED ACTIVITY	1		1	-100.00%
ROWDY OR INCONSIDERATE BEHAV	84	110	-26	-23.64%
TRESPASS		2	-2	-100.00%
VEHICLE NUIS & INAPPROP VEH US	42	40	2	5.00%
Sum:	210	273	-63	-23.08%

ASB

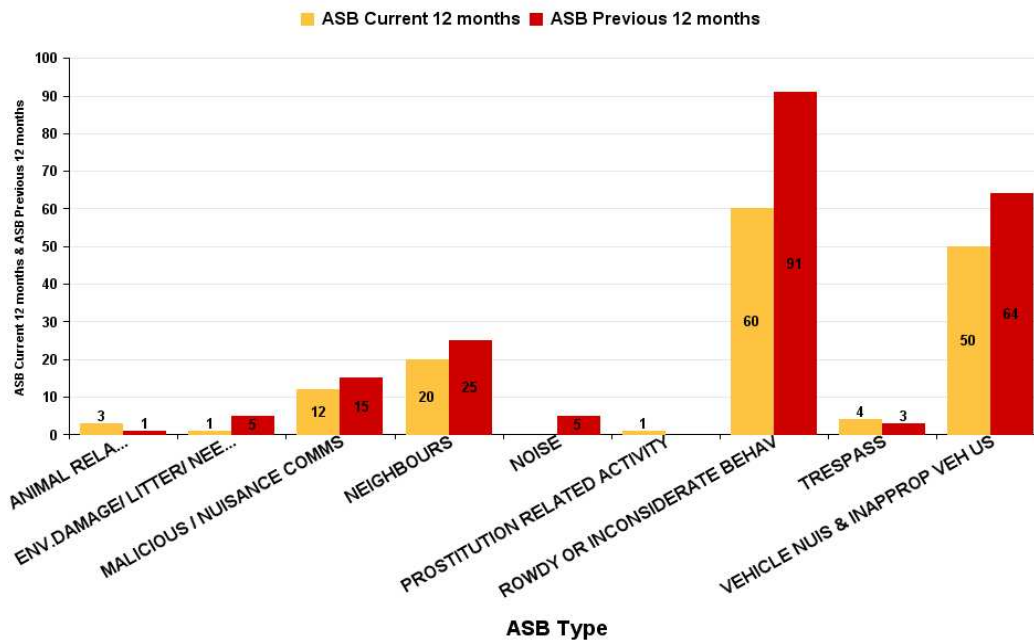
■ ASB Current 12 months ■ ASB Previous 12 months



Desborough Loatland

ASB Type	Current 12 Months 2017-01 2017-12	Previous 12 Months 2016-01 2016-12	+/- Crime	% Change
ANIMAL RELATED INC ANTI-SOCIAL	3	1	2	200.00%
ENV.DAMAGE/ LITTER/ NEEDLES	1	5	-4	-80.00%
MALICIOUS / NUISANCE COMMS	12	15	-3	-20.00%
NEIGHBOURS	20	25	-5	-20.00%
NOISE		5	-5	-100.00%
PROSTITUTION RELATED ACTIVITY	1		1	-100.00%
ROWDY OR INCONSIDERATE BEHAV	60	91	-31	-34.07%
TRESPASS	4	3	1	33.33%
VEHICLE NUIS & INAPPROP VEH US	50	64	-14	-21.88%
Sum:	151	209	-58	-27.75%

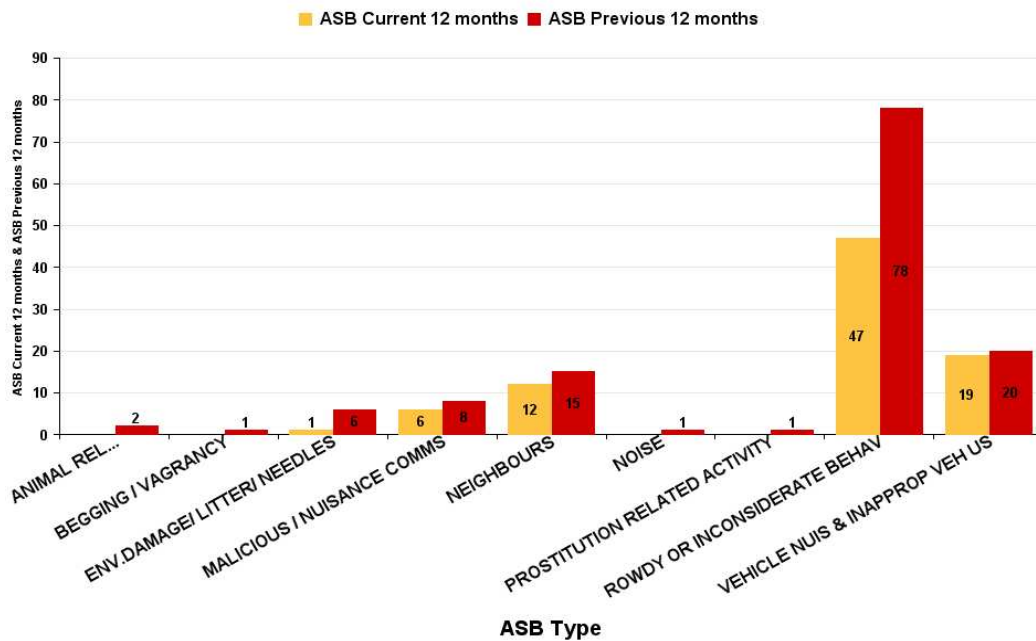
ASB



Desborough St Giles

ASB Type	Current 12 Months 2017-01 2017-12	Previous 12 Months 2016-01 2016-12	+/- Crime	% Change
ANIMAL RELATED INC ANTI-SOCIAL		2	-2	-100.00%
BEGGING / VAGRANCY		1	-1	-100.00%
ENV.DAMAGE/ LITTER/ NEEDLES	1	6	-5	-83.33%
MALICIOUS / NUISANCE COMMS	6	8	-2	-25.00%
NEIGHBOURS	12	15	-3	-20.00%
NOISE		1	-1	-100.00%
PROSTITUTION RELATED ACTIVITY		1	-1	-100.00%
ROWDY OR INCONSIDERATE BEHAV	47	78	-31	-39.74%
VEHICLE NUIS & INAPPROP VEH US	19	20	-1	-5.00%
Sum:	85	132	-47	-35.61%

ASB



ASB Type	Current 12 Months 2017-01 2017-12	Previous 12 Months 2016-01 2016-12	+/- Crime	% Change
ANIMAL RELATED INC ANTI-SOCIAL	6	4	2	50.00%
BEGGING / VAGRANCY	1	1	0	0.00%
ENV.DAMAGE/ LITTER/ NEEDLES	7	3	4	133.33%
MALICIOUS / NUISANCE COMMS	16	18	-2	-11.11%
NEIGHBOURS	37	65	-28	-43.08%
NOISE	5	9	-4	-44.44%
ROWDY OR INCONSIDERATE BEHAV	128	138	-10	-7.25%
TRESPASS		2	-2	-100.00%
VEHICLE NUIS & INAPPROP VEH US	58	60	-2	-3.33%
Sum:	258	300	-42	-14.00%

