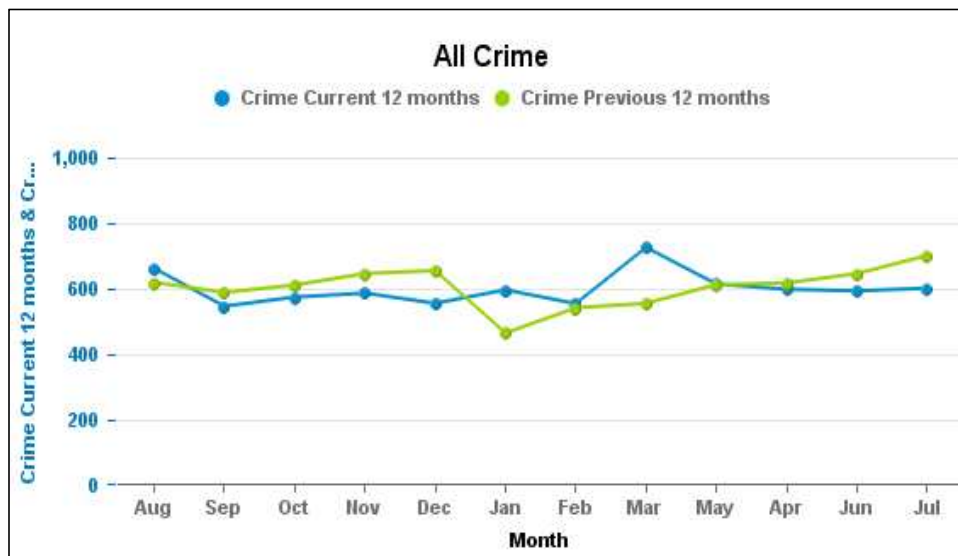


Crime Reports by CSP Sector and Ward

**Kettering Borough**

Crime Group	Current 12 Months 2017-01 2017-12	Previous 12 Months 2016-01 2016-12	+/- Crime	% Change	Number of resolved Crimes	Resolved Rate (past 12mths)
CRIMINAL DAMAGE & ARSON	816	981	-165	-16.82%	112	13.73%
DRUG OFFENCES	166	187	-21	-11.23%	119	71.69%
MISCELLANEOUS CRIMES AGAINST SOCIETY	108	96	12	12.50%	32	29.63%
POSSESSION OF WEAPONS OFFENCES	68	53	15	28.30%	39	57.35%
PUBLIC DISORDER	197	145	52	35.86%	62	31.47%
ROBBERY	103	106	-3	-2.83%	31	30.10%
SEXUAL OFFENCES	267	200	67	33.50%	29	10.86%
THEFT OFFENCES	3403	3589	-186	-5.18%	396	11.64%
VIOLENCE AGAINST THE PERSON	2065	1886	179	9.49%	447	21.65%



Crime Reports by CSP Sector and Ward

**Kettering Rural**

**QUEEN ELEANOR AND BUCCLEUCH**

Crime Group	Current 12 Months 2017-01 2017-12	Previous 12 Months 2016-01 2016-12	+/- Crime	% Change	Number of resolved Crimes	Resolved Rate (past 12mths)
CRIMINAL DAMAGE & ARSON	14	15	-1	-6.67%	1	7.14%
DRUG OFFENCES	1	5	-4	-80.00%		
MISCELLANEOUS CRIMES AGAINST SOCIETY	1	1	0	0.00%		
POSSESSION OF WEAPONS OFFENCES	0	1	-1	-100.00%		
PUBLIC DISORDER	2	0	2	-100.00%		
SEXUAL OFFENCES	1	2	-1	-50.00%	1	100.00%
THEFT OFFENCES	102	87	15	17.24%	4	3.92%
VIOLENCE AGAINST THE PERSON	13	17	-4	-23.53%	3	23.08%



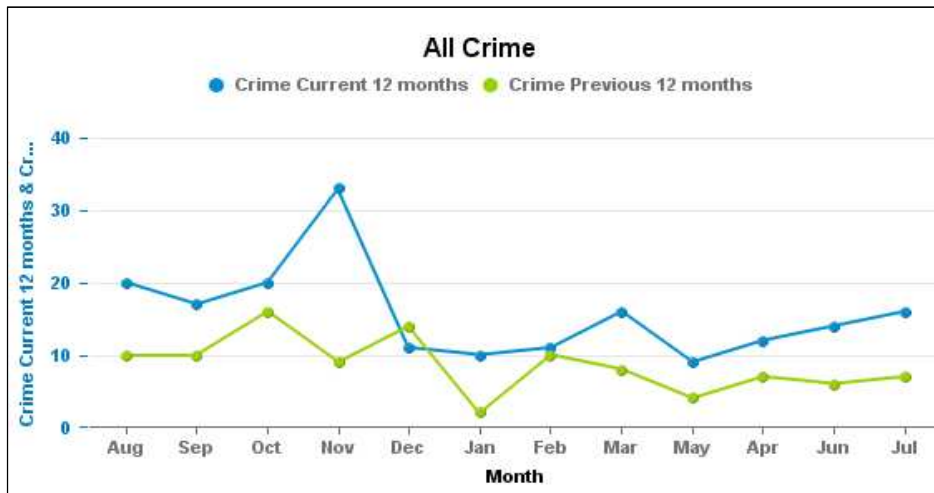
SLADE

Crime Group	Current 12 Months 2017-01 2017-12	Previous 12 Months 2016-01 2016-12	+/- Crime	% Change	Number of resolved Crimes	Resolved Rate (past 12mths)
CRIMINAL DAMAGE & ARSON	25	38	-13	-34.21%	1	4.00%
DRUG OFFENCES	0	4	-4	-100.00%	2	
MISCELLANEOUS CRIMES AGAINST SOCIETY	3	5	-2	-40.00%		
POSSESSION OF WEAPONS OFFENCES	2	2	0	0.00%	1	50.00%
PUBLIC DISORDER	3	4	-1	-25.00%		
ROBBERY	3	2	1	50.00%	1	33.33%
SEXUAL OFFENCES	4	3	1	33.33%		
THEFT OFFENCES	185	187	-2	-1.07%	8	4.32%
VIOLENCE AGAINST THE PERSON	65	52	13	25.00%	7	10.77%



WELLAND

Crime Group	Current 12 Months 2017-01 2017-12	Previous 12 Months 2016-01 2016-12	+/- Crime	% Change	Number of resolved Crimes	Resolved Rate (past 12mths)
CRIMINAL DAMAGE & ARSON	17	12	5	41.67%	2	11.76%
DRUG OFFENCES	5	4	1	25.00%	6	120.00%
MISCELLANEOUS CRIMES AGAINST SOCIETY	3	0	3	-100.00%	1	33.33%
POSSESSION OF WEAPONS OFFENCES	0	0	0	-100.00%	1	
PUBLIC DISORDER	4	1	3	300.00%	2	50.00%
ROBBERY	2	0	2	-100.00%		
SEXUAL OFFENCES	2	3	-1	-33.33%	3	150.00%
THEFT OFFENCES	122	66	56	84.85%	7	5.74%
VIOLENCE AGAINST THE PERSON	34	17	17	100.00%	18	52.94%



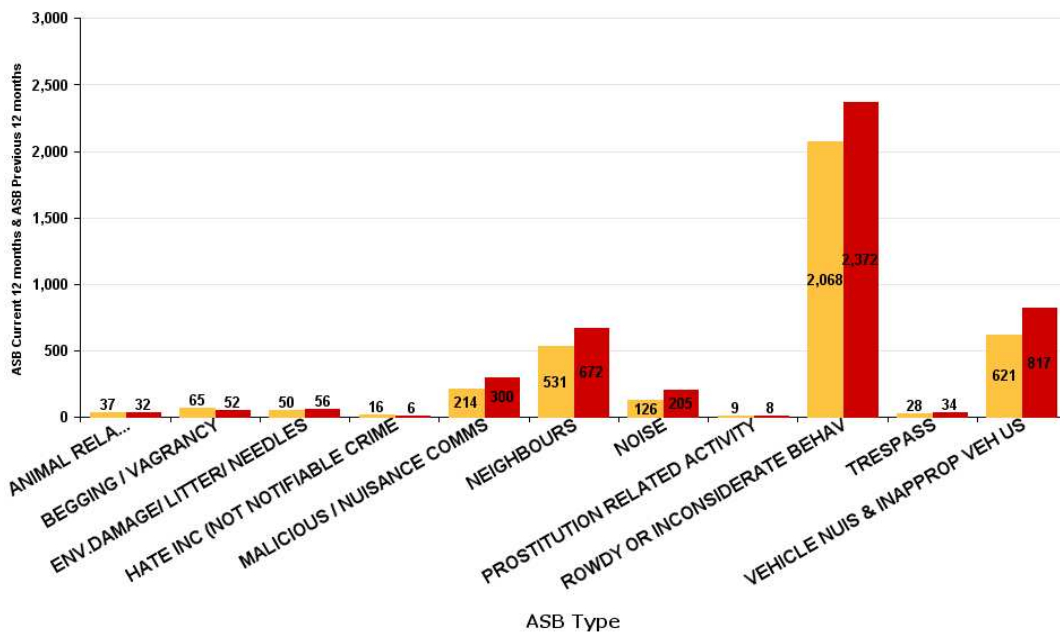
ASB Reports by CSP Sector and Ward

Kettering Borough

ASB Type	Current 12 Months 2017-01 2017-12	Previous 12 Months 2016-01 2016-12	+ / - Crime	% Change
ANIMAL RELATED INC ANTI-SOCIAL	37	32	5	15.63%
BEGGING / VAGRANCY	65	52	13	25.00%
ENV.DAMAGE/ LITTER/ NEEDLES	50	56	-6	-10.71%
HATE INC (NOT NOTIFIABLE CRIME	16	6	10	166.67%
MALICIOUS / NUISANCE COMMS	214	300	-86	-28.67%
NEIGHBOURS	531	672	-141	-20.98%
NOISE	126	205	-79	-38.54%
PROSTITUTION RELATED ACTIVITY	9	8	1	12.50%
ROWDY OR INCONSIDERATE BEHAV	2068	2372	-304	-12.82%
TRESPASS	28	34	-6	-17.65%
VEHICLE NUIS & INAPPROP VEH US	621	817	-196	-23.99%
<b>Sum:</b>	<b>3765</b>	<b>4554</b>	<b>-789</b>	<b>-17.33%</b>

ASB

■ ASB Current 12 months ■ ASB Previous 12 months



ASB Reports by CSP Sector and Ward

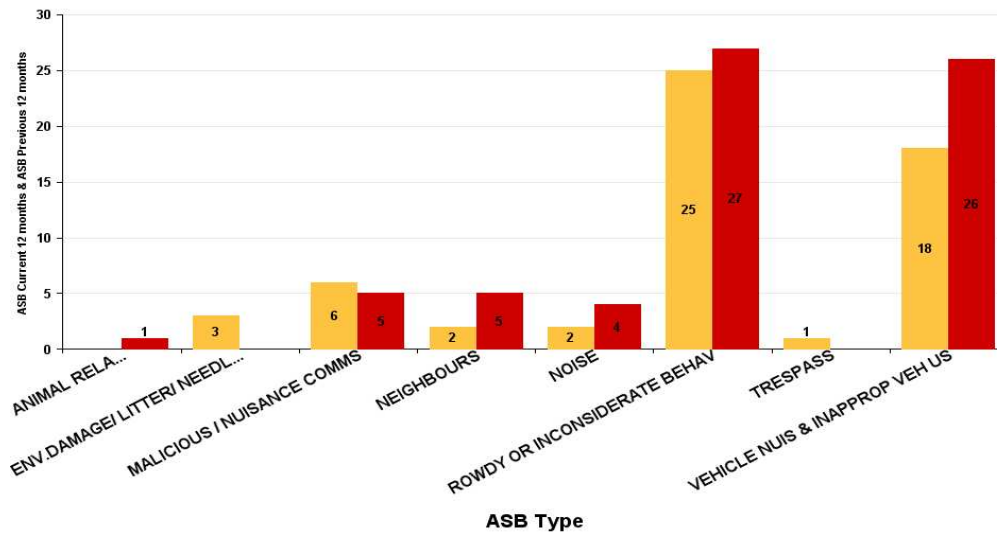
Kettering Rural ASB

Queen Eleanor and Buccleuch

ASB Type	Current 12 Months 2017-01 2017-12	Previous 12 Months 2016-01 2016-12	+/- Crime	% Change
ANIMAL RELATED INC ANTI-SOCIAL		1	-1	-100.00%
ENV.DAMAGE/ LITTER/ NEEDLES	3		3	-100.00%
MALICIOUS / NUISANCE COMMS	6	5	1	20.00%
NEIGHBOURS	2	5	-3	-60.00%
NOISE	2	4	-2	-50.00%
ROWDY OR INCONSIDERATE BEHAV	25	27	-2	-7.41%
TRESPASS	1		1	-100.00%
VEHICLE NUIS & INAPPROP VEH US	18	26	-8	-30.77%
<b>Sum:</b>	<b>57</b>	<b>68</b>	<b>-11</b>	<b>-16.18%</b>

ASB

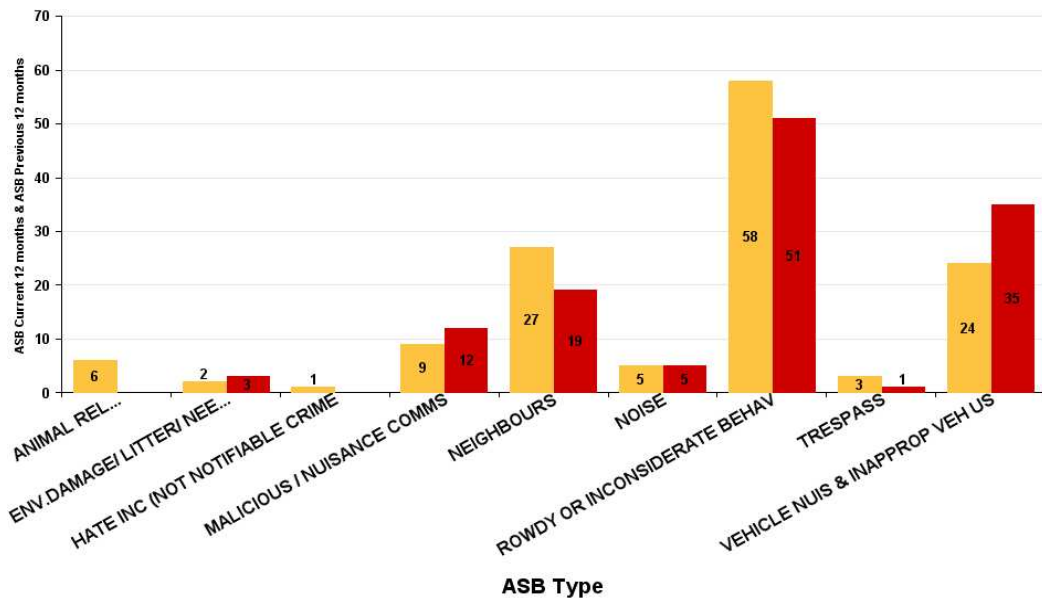
■ ASB Current 12 months ■ ASB Previous 12 months



ASB Type	Current 12 Months 2017-01 2017-12	Previous 12 Months 2016-01 2016-12	+/- Crime	% Change
ANIMAL RELATED INC ANTI-SOCIAL	6		6	-100.00%
ENV.DAMAGE/ LITTER/ NEEDLES	2	3	-1	-33.33%
HATE INC (NOT NOTIFIABLE CRIME	1		1	-100.00%
MALICIOUS / NUISANCE COMMS	9	12	-3	-25.00%
NEIGHBOURS	27	19	8	42.11%
NOISE	5	5	0	0.00%
ROWDY OR INCONSIDERATE BEHAV	58	51	7	13.73%
TRESPASS	3	1	2	200.00%
VEHICLE NUIS & INAPPROP VEH US	24	35	-11	-31.43%
<b>Sum:</b>	<b>135</b>	<b>126</b>	<b>9</b>	<b>7.14%</b>

**ASB**

■ ASB Current 12 months ■ ASB Previous 12 months



**Welland**

ASB Type	Current 12 Months 2017-01 2017-12	Previous 12 Months 2016-01 2016-12	+/- Crime	% Change
ANIMAL RELATED INC ANTI-SOCIAL	4	2	2	100.00%
ENV.DAMAGE/ LITTER/ NEEDLES	1	3	-2	-66.67%
MALICIOUS / NUISANCE COMMS	3	7	-4	-57.14%
NEIGHBOURS	3	10	-7	-70.00%
NOISE		1	-1	-100.00%
ROWDY OR INCONSIDERATE BEHAV	14	11	3	27.27%
TRESPASS	1	3	-2	-66.67%
VEHICLE NUIS & INAPPROP VEH US	17	36	-19	-52.78%
<b>Sum:</b>	<b>43</b>	<b>73</b>	<b>-30</b>	<b>-41.10%</b>

