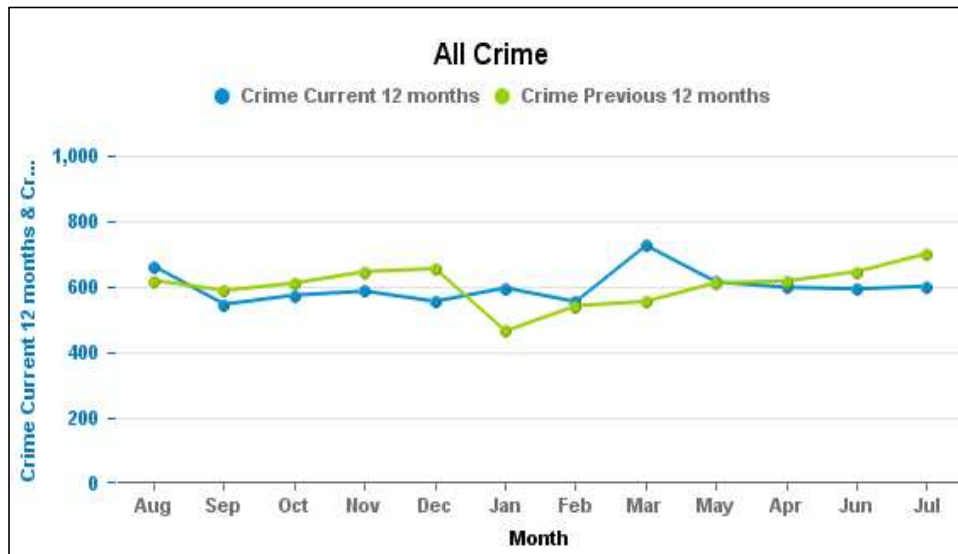


Crime Reports by CSP Sector and Ward

Kettering Borough

Crime Group	Current 12 Months 2017-01 2017-12	Previous 12 Months 2016-01 2016-12	+/- Crime	% Change	Number of resolved Crimes	Resolved Rate (past 12mths)
CRIMINAL DAMAGE & ARSON	816	981	-165	-16.82%	112	13.73%
DRUG OFFENCES	166	187	-21	-11.23%	119	71.69%
MISCELLANEOUS CRIMES AGAINST SOCIETY	108	96	12	12.50%	32	29.63%
POSSESSION OF WEAPONS OFFENCES	68	53	15	28.30%	39	57.35%
PUBLIC DISORDER	197	145	52	35.86%	62	31.47%
ROBBERY	103	106	-3	-2.83%	31	30.10%
SEXUAL OFFENCES	267	200	67	33.50%	29	10.86%
THEFT OFFENCES	3403	3589	-186	-5.18%	396	11.64%
VIOLENCE AGAINST THE PERSON	2065	1886	179	9.49%	447	21.65%

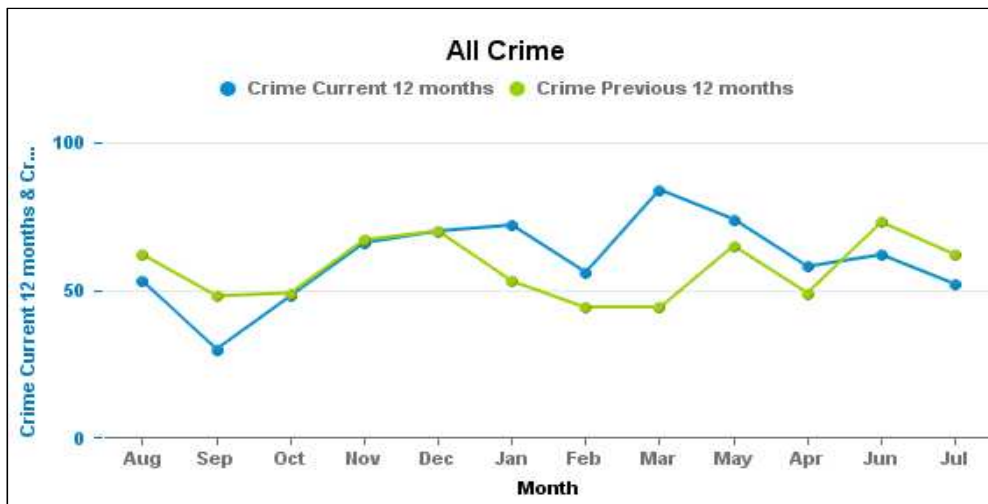


Crime Reports by CSP Sector and Ward

Kettering Town

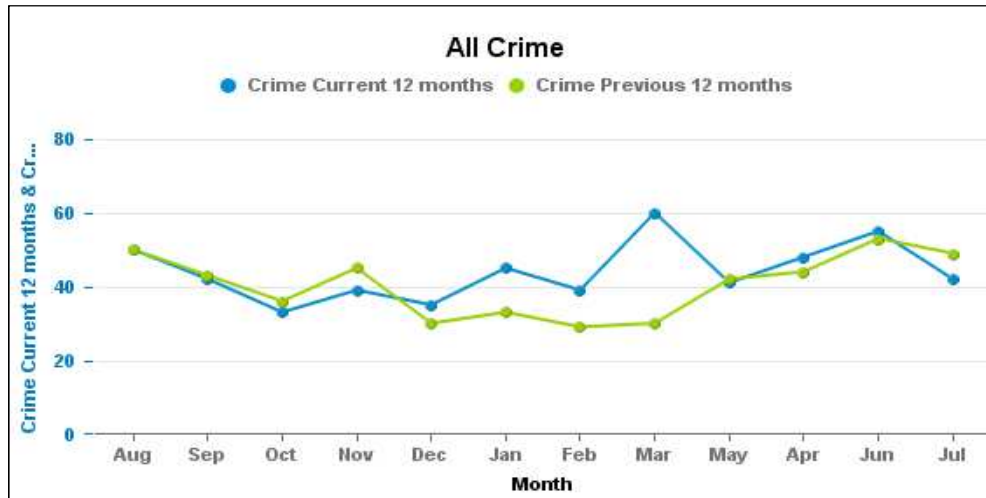
ALL SAINTS

Crime Group	Current 12 Months 2017-01 2017-12	Previous 12 Months 2016-01 2016-12	+/- Crime	% Change	Number of resolved Crimes	Resolved Rate (past 12mths)
CRIMINAL DAMAGE & ARSON	114	87	27	31.03%	26	22.81%
DRUG OFFENCES	38	20	18	90.00%	29	76.32%
MISCELLANEOUS CRIMES AGAINST SOCIETY	11	4	7	175.00%	3	27.27%
POSSESSION OF WEAPONS OFFENCES	13	8	5	62.50%	5	38.46%
PUBLIC DISORDER	13	11	2	18.18%	1	7.69%
ROBBERY	19	24	-5	-20.83%	5	26.32%
SEXUAL OFFENCES	26	24	2	8.33%	3	11.54%
THEFT OFFENCES	296	303	-7	-2.31%	49	16.55%
VIOLENCE AGAINST THE PERSON	195	205	-10	-4.88%	44	22.56%



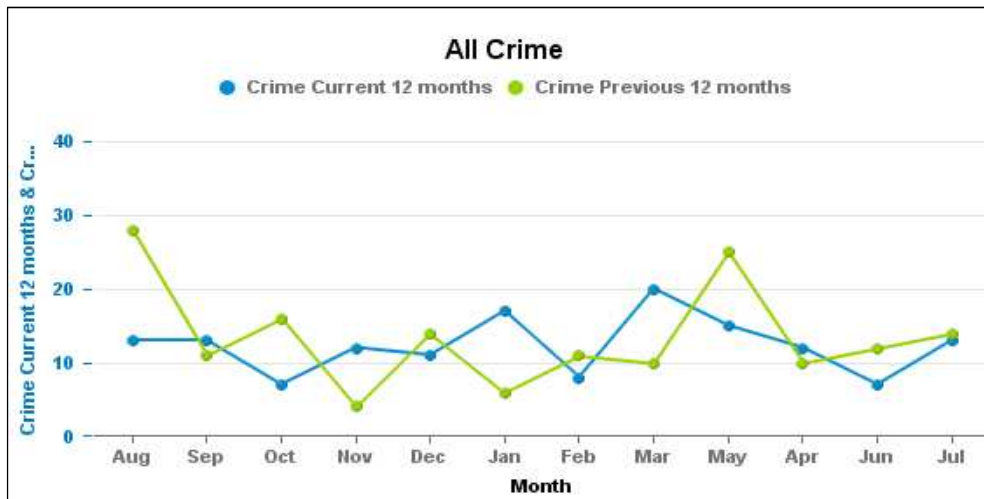
AVONDALE GRANGE

Crime Group	Current 12 Months 2017-01 2017-12	Previous 12 Months 2016-01 2016-12	+/- Crime	% Change	Number of resolved Crimes	Resolved Rate (past 12mths)
CRIMINAL DAMAGE & ARSON	78	73	5	6.85%	8	10.26%
DRUG OFFENCES	15	10	5	50.00%	9	60.00%
MISCELLANEOUS CRIMES AGAINST SOCIETY	8	7	1	14.29%	1	12.50%
POSSESSION OF WEAPONS OFFENCES	8	5	3	60.00%	3	37.50%
PUBLIC DISORDER	15	12	3	25.00%	6	40.00%
ROBBERY	6	6	0	0.00%	3	50.00%
SEXUAL OFFENCES	43	28	15	53.57%	3	6.98%
THEFT OFFENCES	146	175	-29	-16.57%	23	15.75%
VIOLENCE AGAINST THE PERSON	210	168	42	25.00%	36	17.14%



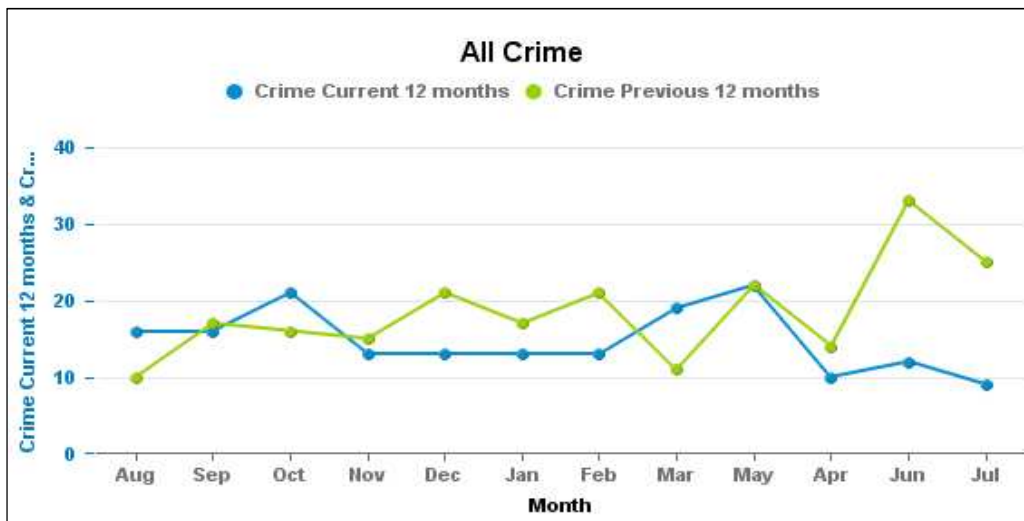
BRAMBLESIDE

Crime Group	Current 12 Months 2017-01 2017-12	Previous 12 Months 2016-01 2016-12	+/- Crime	% Change	Number of resolved Crimes	Resolved Rate (past 12mths)
CRIMINAL DAMAGE & ARSON	17	31	-14	-45.16%		
DRUG OFFENCES	0	4	-4	-100.00%		
MISCELLANEOUS CRIMES AGAINST SOCIETY	2	4	-2	-50.00%	2	100.00%
POSSESSION OF WEAPONS OFFENCES	0	2	-2	-100.00%		
PUBLIC DISORDER	3	5	-2	-40.00%		
ROBBERY	3	1	2	200.00%	2	66.67%
SEXUAL OFFENCES	10	4	6	150.00%	1	10.00%
THEFT OFFENCES	60	70	-10	-14.29%	1	1.67%
VIOLENCE AGAINST THE PERSON	53	40	13	32.50%	19	35.85%



ISE LODGE

Crime Group	Current 12 Months 2017-01 2017-12	Previous 12 Months 2016-01 2016-12	+/- Crime	% Change	Number of resolved Crimes	Resolved Rate (past 12mths)
CRIMINAL DAMAGE & ARSON	15	34	-19	-55.88%	1	6.67%
DRUG OFFENCES	1	6	-5	-83.33%		
MISCELLANEOUS CRIMES AGAINST SOCIETY	2	7	-5	-71.43%	2	100.00%
POSSESSION OF WEAPONS OFFENCES	1	0	1	-100.00%		
PUBLIC DISORDER	7	9	-2	-22.22%	3	42.86%
ROBBERY	2	2	0	0.00%		
SEXUAL OFFENCES	9	8	1	12.50%	2	22.22%
THEFT OFFENCES	78	107	-29	-27.10%	16	20.51%
VIOLENCE AGAINST THE PERSON	62	49	13	26.53%	13	20.97%



NORTHFIELD

Crime Group	Current 12 Months 2017-01 2017-12	Previous 12 Months 2016-01 2016-12	+/- Crime	% Change	Number of resolved Crimes	Resolved Rate (past 12mths)
CRIMINAL DAMAGE & ARSON	56	51	5	9.80%	6	10.71%
DRUG OFFENCES	13	9	4	44.44%	8	61.54%
MISCELLANEOUS CRIMES AGAINST SOCIETY	8	6	2	33.33%	1	12.50%
POSSESSION OF WEAPONS OFFENCES	5	2	3	150.00%	3	60.00%
PUBLIC DISORDER	8	8	0	0.00%	1	12.50%
ROBBERY	9	8	1	12.50%	4	44.44%
SEXUAL OFFENCES	4	9	-5	-55.56%		
THEFT OFFENCES	361	281	80	28.47%	63	17.45%
VIOLENCE AGAINST THE PERSON	106	100	6	6.00%	17	16.04%



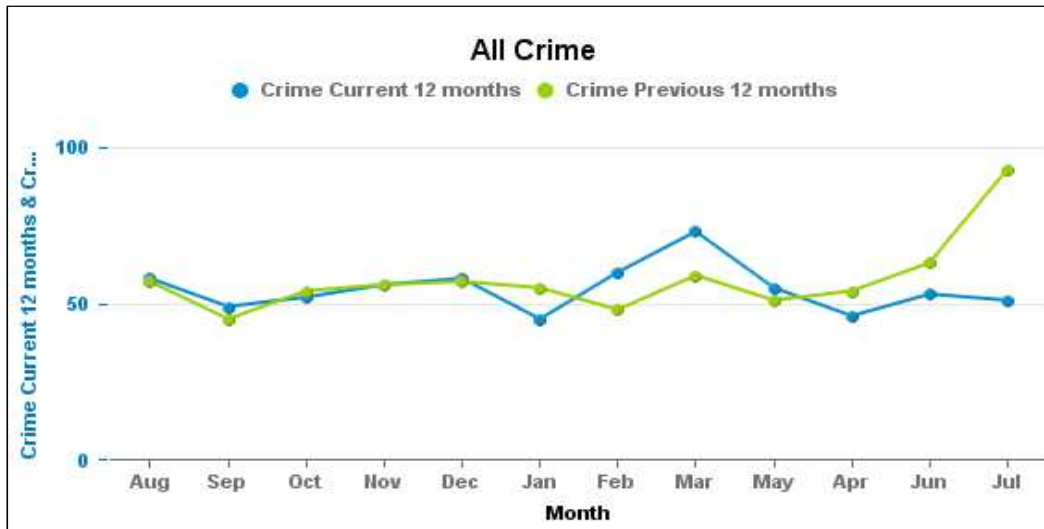
PIPERS HILL

Crime Group	Current 12 Months 2017-01 2017-12	Previous 12 Months 2016-01 2016-12	+/- Crime	% Change	Number of resolved Crimes	Resolved Rate (past 12mths)
CRIMINAL DAMAGE & ARSON	55	84	-29	-34.52%	6	10.91%
DRUG OFFENCES	9	17	-8	-47.06%	5	55.56%
MISCELLANEOUS CRIMES AGAINST SOCIETY	6	7	-1	-14.29%	4	66.67%
POSSESSION OF WEAPONS OFFENCES	1	3	-2	-66.67%	1	100.00%
PUBLIC DISORDER	7	4	3	75.00%	2	28.57%
ROBBERY	9	5	4	80.00%	4	44.44%
SEXUAL OFFENCES	22	18	4	22.22%	1	4.55%
THEFT OFFENCES	118	130	-12	-9.23%	11	9.32%
VIOLENCE AGAINST THE PERSON	133	146	-13	-8.90%	19	14.29%



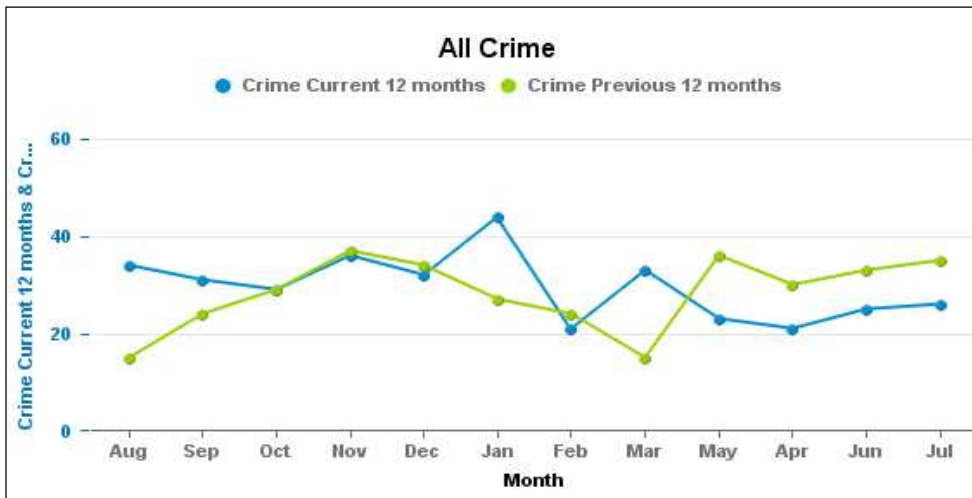
ST MICHAELS AND WICKSTEED

Crime Group	Current 12 Months 2017-01 2017-12	Previous 12 Months 2016-01 2016-12	+/- Crime	% Change	Number of resolved Crimes	Resolved Rate (past 12mths)
CRIMINAL DAMAGE & ARSON	62	102	-40	-39.22%	3	4.84%
DRUG OFFENCES	10	14	-4	-28.57%	6	60.00%
MISCELLANEOUS CRIMES AGAINST SOCIETY	15	13	2	15.38%	4	26.67%
POSSESSION OF WEAPONS OFFENCES	4	6	-2	-33.33%	3	75.00%
PUBLIC DISORDER	29	15	14	93.33%	10	34.48%
ROBBERY	3	7	-4	-57.14%	1	33.33%
SEXUAL OFFENCES	23	21	2	9.52%	5	21.74%
THEFT OFFENCES	314	336	-22	-6.55%	28	8.92%
VIOLENCE AGAINST THE PERSON	196	178	18	10.11%	40	20.41%



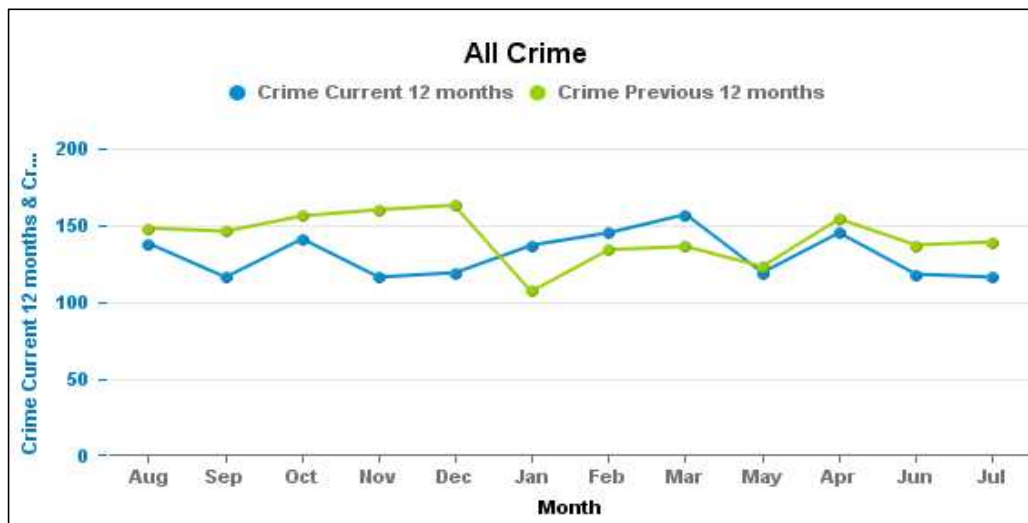
ST PETERS

Crime Group	Current 12 Months 2017-01 2017-12	Previous 12 Months 2016-01 2016-12	+/- Crime	% Change	Number of resolved Crimes	Resolved Rate (past 12mths)
CRIMINAL DAMAGE & ARSON	30	33	-3	-9.09%	7	23.33%
DRUG OFFENCES	3	4	-1	-25.00%	2	66.67%
MISCELLANEOUS CRIMES AGAINST SOCIETY	7	2	5	250.00%	2	28.57%
POSSESSION OF WEAPONS OFFENCES	1	1	0	0.00%		
PUBLIC DISORDER	10	9	1	11.11%	2	20.00%
ROBBERY	1	4	-3	-75.00%	1	100.00%
SEXUAL OFFENCES	8	11	-3	-27.27%	3	37.50%
THEFT OFFENCES	197	198	-1	-0.51%	16	8.12%
VIOLENCE AGAINST THE PERSON	98	77	21	27.27%	36	36.73%



WILLIAM KNIBB

Crime Group	Current 12 Months 2017-01 2017-12	Previous 12 Months 2016-01 2016-12	+/- Crime	% Change	Number of resolved Crimes	Resolved Rate (past 12mths)
CRIMINAL DAMAGE & ARSON	141	190	-49	-25.79%	36	25.53%
DRUG OFFENCES	57	67	-10	-14.93%	47	82.46%
MISCELLANEOUS CRIMES AGAINST SOCIETY	23	16	7	43.75%	6	26.09%
POSSESSION OF WEAPONS OFFENCES	23	18	5	27.78%	20	86.96%
PUBLIC DISORDER	65	47	18	38.30%	28	43.08%
ROBBERY	27	34	-7	-20.59%	9	33.33%
SEXUAL OFFENCES	43	32	11	34.38%	4	9.30%
THEFT OFFENCES	743	879	-136	-15.47%	135	18.17%
VIOLENCE AGAINST THE PERSON	445	420	25	5.95%	106	23.82%



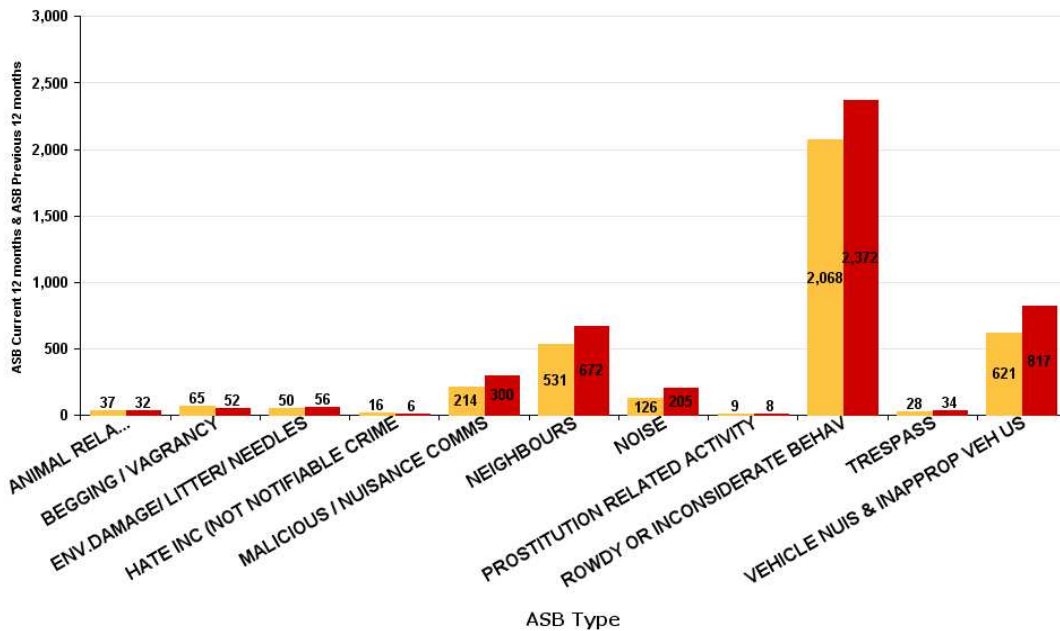
ASB Reports by CSP Sector and Ward

Kettering Borough

ASB Type	Current 12 Months 2017-01 2017-12	Previous 12 Months 2016-01 2016-12	+ / - Crime	% Change
ANIMAL RELATED INC ANTI-SOCIAL	37	32	5	15.63%
BEGGING / VAGRANCY	65	52	13	25.00%
ENV.DAMAGE/ LITTER/ NEEDLES	50	56	-6	-10.71%
HATE INC (NOT NOTIFIABLE CRIME	16	6	10	166.67%
MALICIOUS / NUISANCE COMMS	214	300	-86	-28.67%
NEIGHBOURS	531	672	-141	-20.98%
NOISE	126	205	-79	-38.54%
PROSTITUTION RELATED ACTIVITY	9	8	1	12.50%
ROWDY OR INCONSIDERATE BEHAV	2068	2372	-304	-12.82%
TRESPASS	28	34	-6	-17.65%
VEHICLE NUIS & INAPPROP VEH US	621	817	-196	-23.99%
Sum:	3765	4554	-789	-17.33%

ASB

■ ASB Current 12 months ■ ASB Previous 12 months



ASB Reports by CSP Sector and Ward

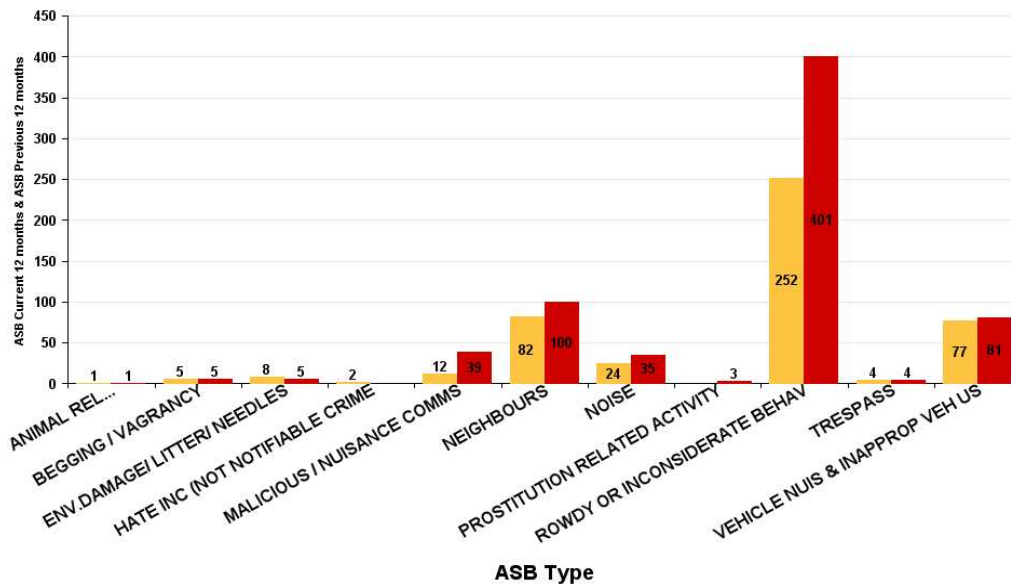
Kettering Town ASB

All Saints

ASB Type	Current 12 Months 2017-01 2017-12	Previous 12 Months 2016-01 2016-12	+/- Crime	% Change
ANIMAL RELATED INC ANTI-SOCIAL	1	1	0	0.00%
BEGGING / VAGRANCY	5	5	0	0.00%
ENV.DAMAGE/ LITTER/ NEEDLES	8	5	3	60.00%
HATE INC (NOT NOTIFIABLE CRIME	2		2	-100.00%
MALICIOUS / NUISANCE COMMS	12	39	-27	-69.23%
NEIGHBOURS	82	100	-18	-18.00%
NOISE	24	35	-11	-31.43%
PROSTITUTION RELATED ACTIVITY		3	-3	-100.00%
ROWDY OR INCONSIDERATE BEHAV	252	401	-149	-37.16%
TRESPASS	4	4	0	0.00%
VEHICLE NUIS & INAPPROP VEH US	77	81	-4	-4.94%
Sum:	467	674	-207	-30.71%

ASB

■ ASB Current 12 months ■ ASB Previous 12 months

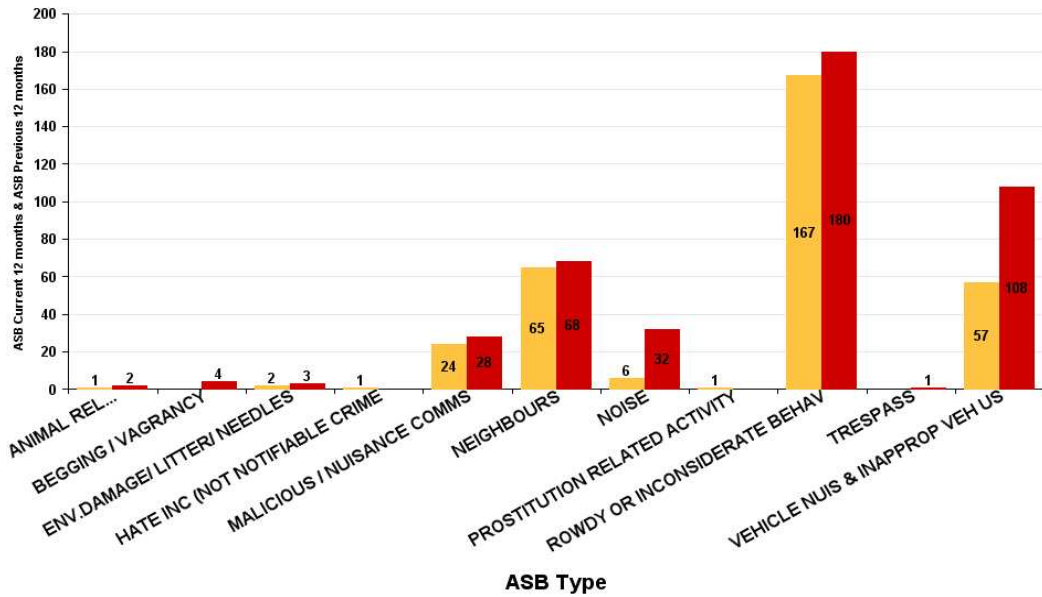


Avondale Grange

ASB Type	Current 12 Months 2017-01 2017-12	Previous 12 Months 2016-01 2016-12	+/- Crime	% Change
ANIMAL RELATED INC ANTI-SOCIAL	1	2	-1	-50.00%
BEGGING / VAGRANCY		4	-4	-100.00%
ENV.DAMAGE/ LITTER/ NEEDLES	2	3	-1	-33.33%
HATE INC (NOT NOTIFIABLE CRIME	1		1	-100.00%
MALICIOUS / NUISANCE COMMS	24	28	-4	-14.29%
NEIGHBOURS	65	68	-3	-4.41%
NOISE	6	32	-26	-81.25%
PROSTITUTION RELATED ACTIVITY	1		1	-100.00%
ROWDY OR INCONSIDERATE BEHAV	167	180	-13	-7.22%
TRESPASS		1	-1	-100.00%
VEHICLE NUIS & INAPPROP VEH US	57	108	-51	-47.22%
Sum:	324	426	-102	-23.94%

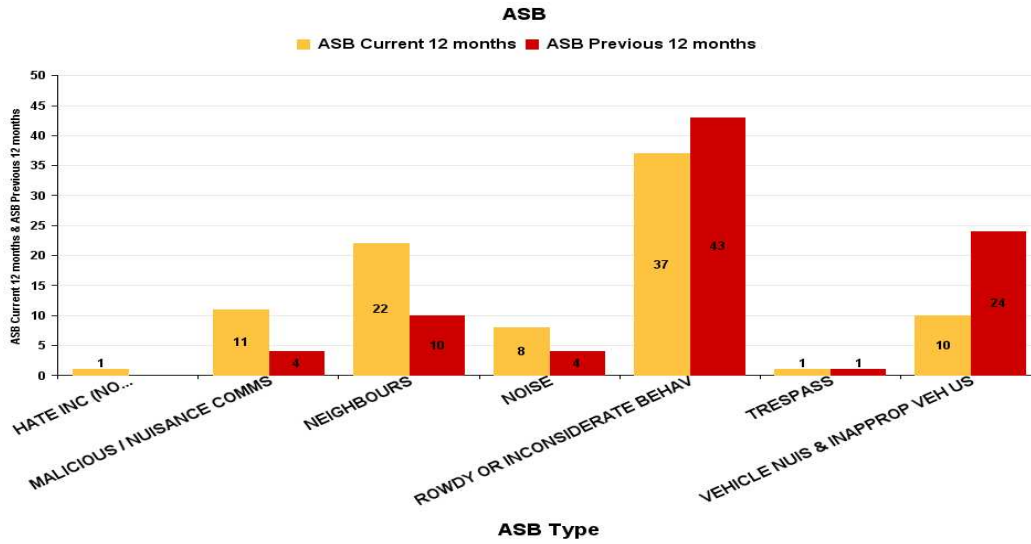
ASB

■ ASB Current 12 months ■ ASB Previous 12 months



Brambleside

ASB Type	Current 12 Months 2017-01 2017-12	Previous 12 Months 2016-01 2016-12	+/- Crime	% Change
HATE INC (NOT NOTIFIABLE CRIME)	1		1	-100.00%
MALICIOUS / NUISANCE COMMS	11	4	7	175.00%
NEIGHBOURS	22	10	12	120.00%
NOISE	8	4	4	100.00%
ROWDY OR INCONSIDERATE BEHAV	37	43	-6	-13.95%
TRESPASS	1	1	0	0.00%
VEHICLE NUIS & INAPPROP VEH US	10	24	-14	-58.33%
Sum:	90	86	4	4.65%

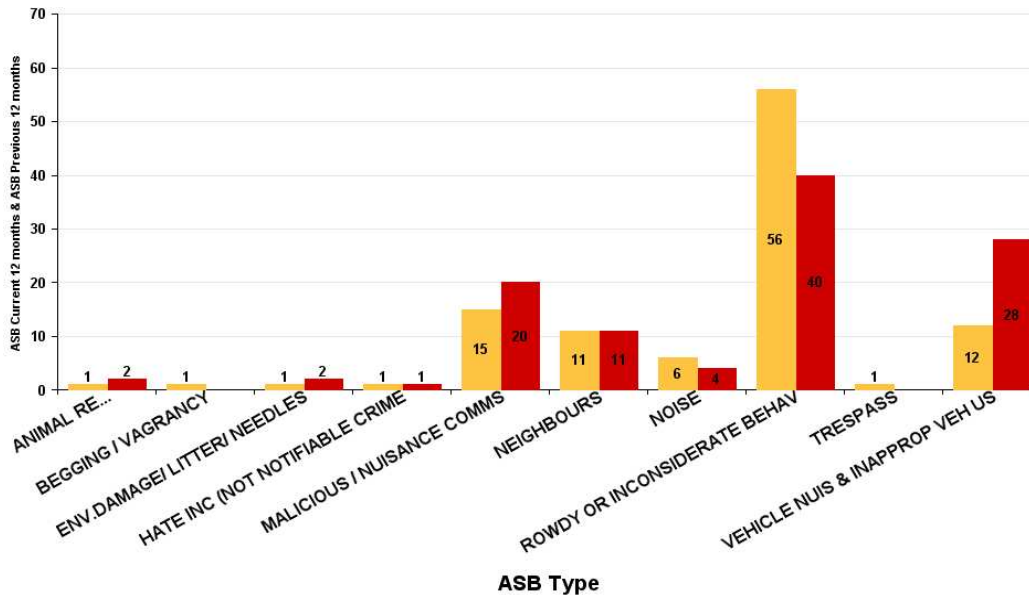


Ise Lodge

ASB Type	Current 12 Months 2017-01 2017-12	Previous 12 Months 2016-01 2016-12	+/- Crime	% Change
ANIMAL RELATED INC ANTI-SOCIAL	1	2	-1	-50.00%
BEGGING / VAGRANCY	1		1	-100.00%
ENV.DAMAGE/ LITTER/ NEEDLES	1	2	-1	-50.00%
HATE INC (NOT NOTIFIABLE CRIME	1	1	0	0.00%
MALICIOUS / NUISANCE COMMS	15	20	-5	-25.00%
NEIGHBOURS	11	11	0	0.00%
NOISE	6	4	2	50.00%
ROWDY OR INCONSIDERATE BEHAV	56	40	16	40.00%
TRESPASS	1		1	-100.00%
VEHICLE NUIS & INAPPROP VEH US	12	28	-16	-57.14%
Sum:	105	108	-3	-2.78%

ASB

ASB Current 12 months ASB Previous 12 months

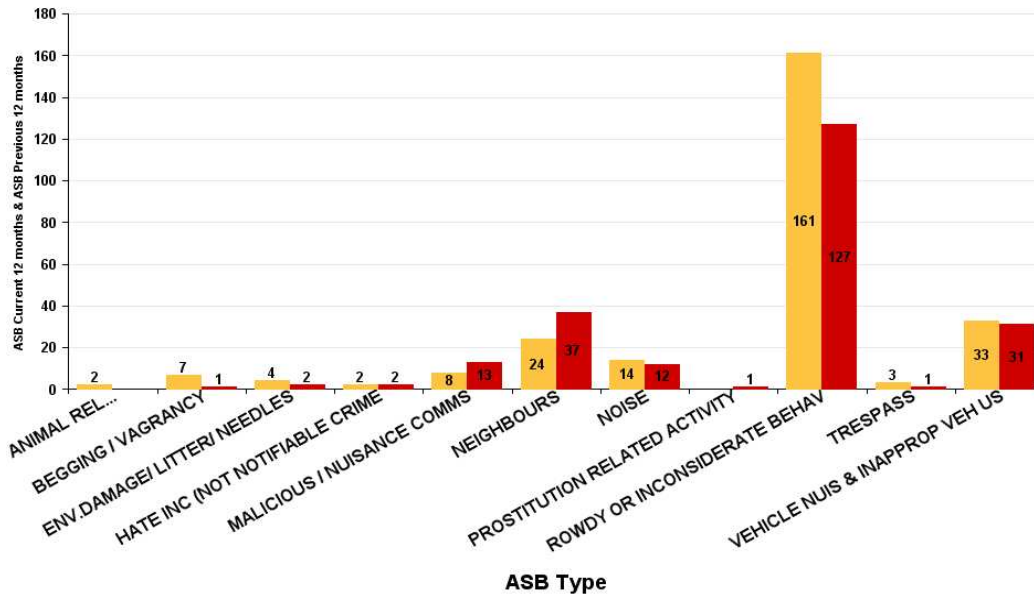


Northfield

ASB Type	Current 12 Months 2017-01 2017-12	Previous 12 Months 2016-01 2016-12	+/- Crime	% Change
ANIMAL RELATED INC ANTI-SOCIAL	2		2	-100.00%
BEGGING / VAGRANCY	7	1	6	600.00%
ENV.DAMAGE/ LITTER/ NEEDLES	4	2	2	100.00%
HATE INC (NOT NOTIFIABLE CRIME	2	2	0	0.00%
MALICIOUS / NUISANCE COMMS	8	13	-5	-38.46%
NEIGHBOURS	24	37	-13	-35.14%
NOISE	14	12	2	16.67%
PROSTITUTION RELATED ACTIVITY		1	-1	-100.00%
ROWDY OR INCONSIDERATE BEHAV	161	127	34	26.77%
TRESPASS	3	1	2	200.00%
VEHICLE NUIS & INAPPROP VEH US	33	31	2	6.45%
Sum:	258	227	31	13.66%

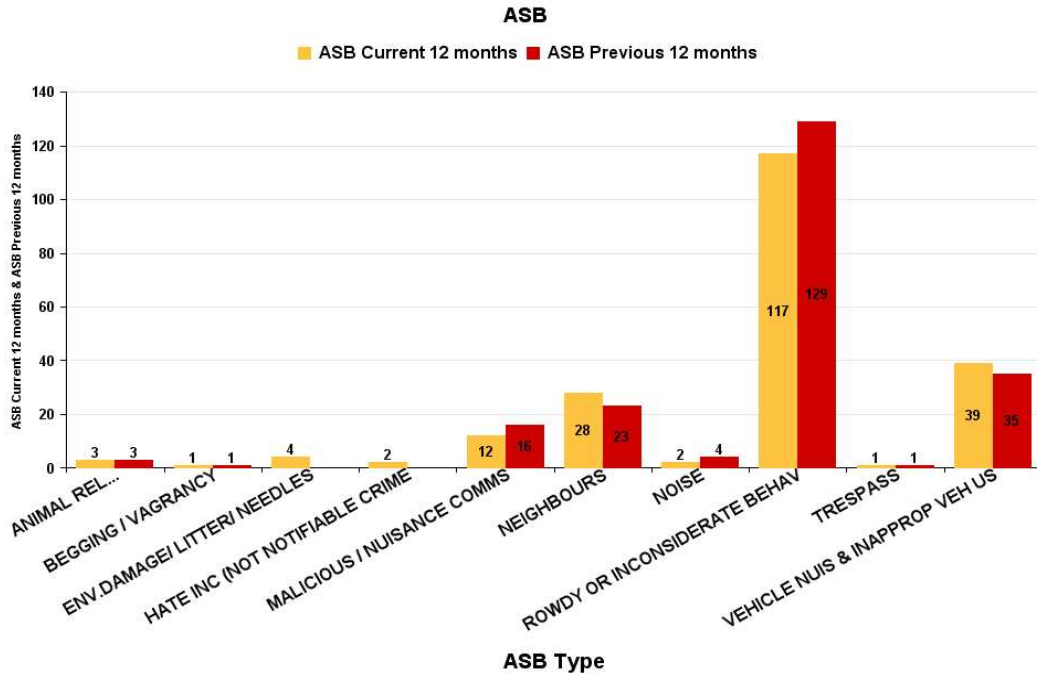
ASB

■ ASB Current 12 months ■ ASB Previous 12 months



Pipers Hill

ASB Type	Current 12 Months 2017-01 2017-12	Previous 12 Months 2016-01 2016-12	+/- Crime	% Change
ANIMAL RELATED INC ANTI-SOCIAL	3	3	0	0.00%
BEGGING / VAGRANCY	1	1	0	0.00%
ENV.DAMAGE/ LITTER/ NEEDLES	4		4	-100.00%
HATE INC (NOT NOTIFIABLE CRIME	2		2	-100.00%
MALICIOUS / NUISANCE COMMS	12	16	-4	-25.00%
NEIGHBOURS	28	23	5	21.74%
NOISE	2	4	-2	-50.00%
ROWDY OR INCONSIDERATE BEHAV	117	129	-12	-9.30%
TRESPASS	1	1	0	0.00%
VEHICLE NUIS & INAPPROP VEH US	39	35	4	11.43%
Sum:	209	212	-3	-1.42%

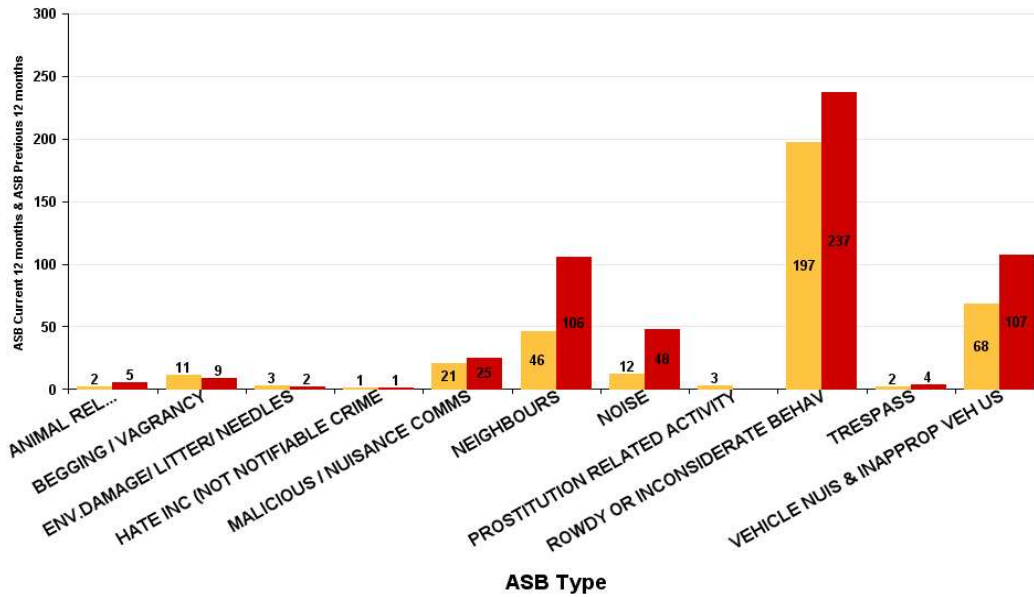


St Michaels and Wicksteed

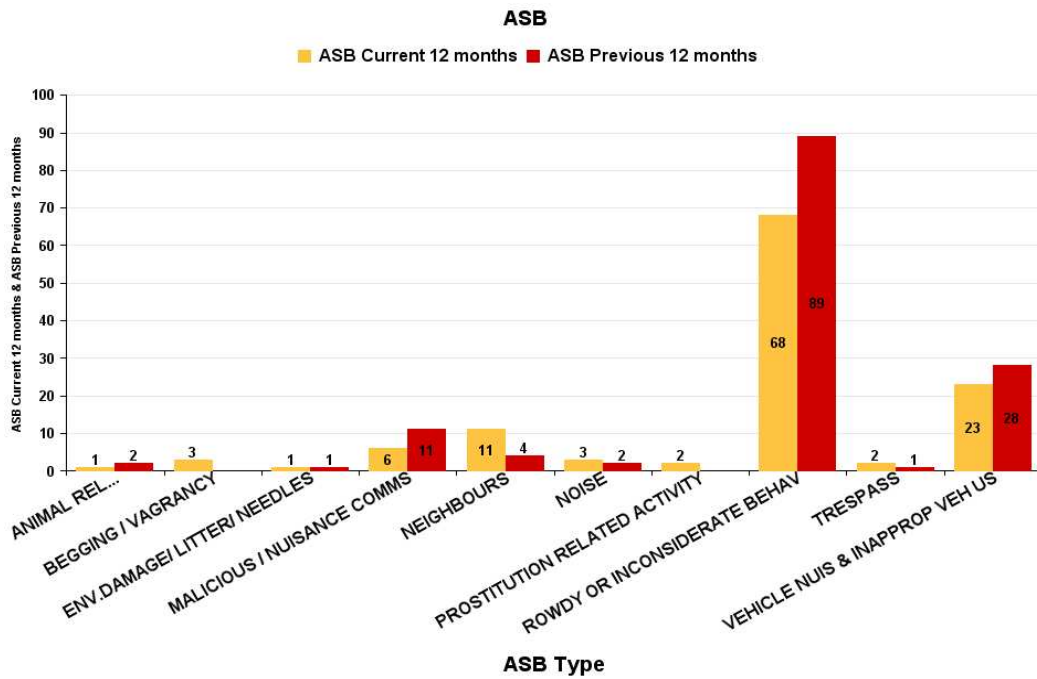
ASB Type	Current 12 Months 2017-01 2017-12	Previous 12 Months 2016-01 2016-12	+/- Crime	% Change
ANIMAL RELATED INC ANTI-SOCIAL	2	5	-3	-60.00%
BEGGING / VAGRANCY	11	9	2	22.22%
ENV.DAMAGE/ LITTER/ NEEDLES	3	2	1	50.00%
HATE INC (NOT NOTIFIABLE CRIME	1	1	0	0.00%
MALICIOUS / NUISANCE COMMS	21	25	-4	-16.00%
NEIGHBOURS	46	106	-60	-56.60%
NOISE	12	48	-36	-75.00%
PROSTITUTION RELATED ACTIVITY	3		3	-100.00%
ROWDY OR INCONSIDERATE BEHAV	197	237	-40	-16.88%
TRESPASS	2	4	-2	-50.00%
VEHICLE NUIS & INAPPROP VEH US	68	107	-39	-36.45%
Sum:	366	544	-178	-32.72%

ASB

■ ASB Current 12 months ■ ASB Previous 12 months



ASB Type	Current 12 Months 2017-01 2017-12	Previous 12 Months 2016-01 2016-12	+/- Crime	% Change
ANIMAL RELATED INC ANTI-SOCIAL	1	2	-1	-50.00%
BEGGING / VAGRANCY	3		3	-100.00%
ENV.DAMAGE/ LITTER/ NEEDLES	1	1	0	0.00%
MALICIOUS / NUISANCE COMMS	6	11	-5	-45.45%
NEIGHBOURS	11	4	7	175.00%
NOISE	3	2	1	50.00%
PROSTITUTION RELATED ACTIVITY	2		2	-100.00%
ROWDY OR INCONSIDERATE BEHAV	68	89	-21	-23.60%
TRESPASS	2	1	1	100.00%
VEHICLE NUIS & INAPPROP VEH US	23	28	-5	-17.86%
Sum:	120	138	-18	-13.04%



ASB Type	Current 12 Months 2017-01 2017-12	Previous 12 Months 2016-01 2016-12	+/- Crime	% Change
ANIMAL RELATED INC ANTI-SOCIAL	2	3	-1	-33.33%
BEGGING / VAGRANCY	35	30	5	16.67%
ENV.DAMAGE/ LITTER/ NEEDLES	10	21	-11	-52.38%
HATE INC (NOT NOTIFIABLE CRIME	3	1	2	200.00%
MALICIOUS / NUISANCE COMMS	21	29	-8	-27.59%
NEIGHBOURS	76	96	-20	-20.83%
NOISE	32	28	4	14.29%
PROSTITUTION RELATED ACTIVITY	1	3	-2	-66.67%
ROWDY OR INCONSIDERATE BEHAV	560	573	-13	-2.27%
TRESPASS	5	9	-4	-44.44%
VEHICLE NUIS & INAPPROP VEH US	66	67	-1	-1.49%
Sum:	811	860	-49	-5.70%

ASB

■ ASB Current 12 months ■ ASB Previous 12 months

