

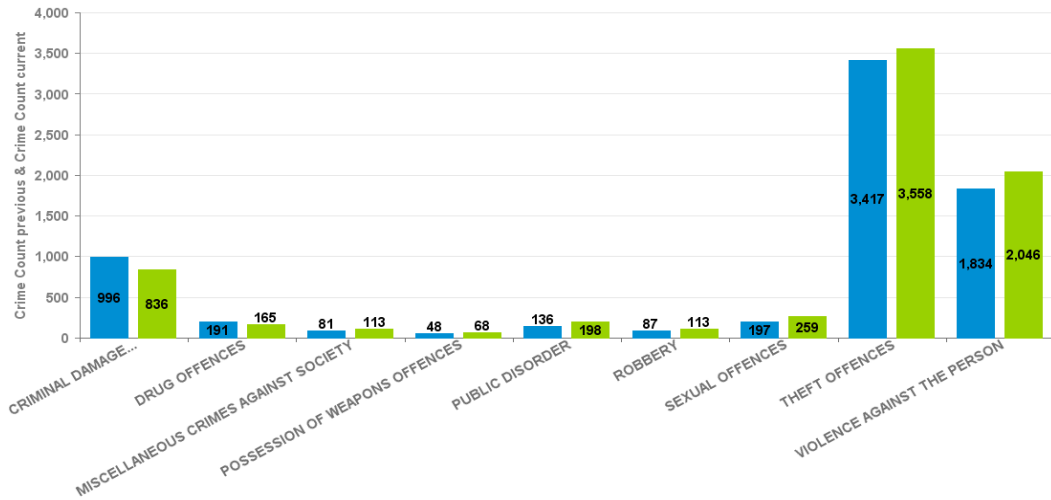
### Crime Reports by CSP Sector and Ward

## KETTERING BOROUGH

Crime Group	Current 12 Months 2016-11 2017-10	Previous 12 Months 2015-11 2016-10	+/- Crime	% Change	Number of resolved Crimes	Resolved Rate (past 12mths)
CRIMINAL DAMAGE & ARSON	836	996	-160	-16.06%	114	13.64%
DRUG OFFENCES	165	191	-26	-13.61%	133	80.61%
MISCELLANEOUS CRIMES AGAINST SOCIETY	113	81	32	39.51%	38	33.63%
POSSESSION OF WEAPONS OFFENCES	68	48	20	41.67%	41	60.29%
PUBLIC DISORDER	198	136	62	45.59%	67	33.84%
ROBBERY	113	87	26	29.89%	33	29.20%
SEXUAL OFFENCES	259	197	62	31.47%	25	9.65%
THEFT OFFENCES	3558	3417	141	4.13%	415	11.66%
VIOLENCE AGAINST THE PERSON	2046	1834	212	11.56%	417	20.38%

#### All Crime

■ Crime Count previous ■ Crime Count current



Crime Tree LV2 Desc

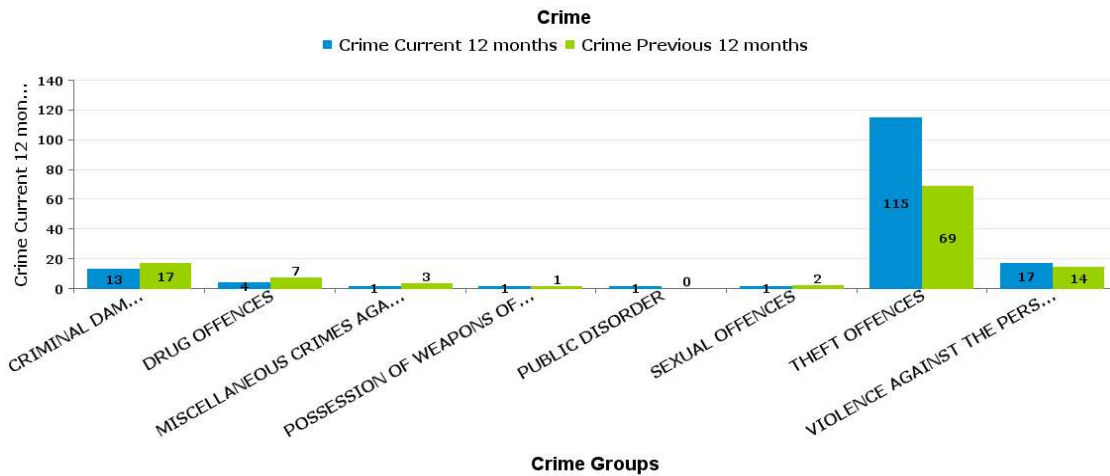
Crime Reports by CSP Sector and Ward

Kettering Rural

**KETTERING RURAL**

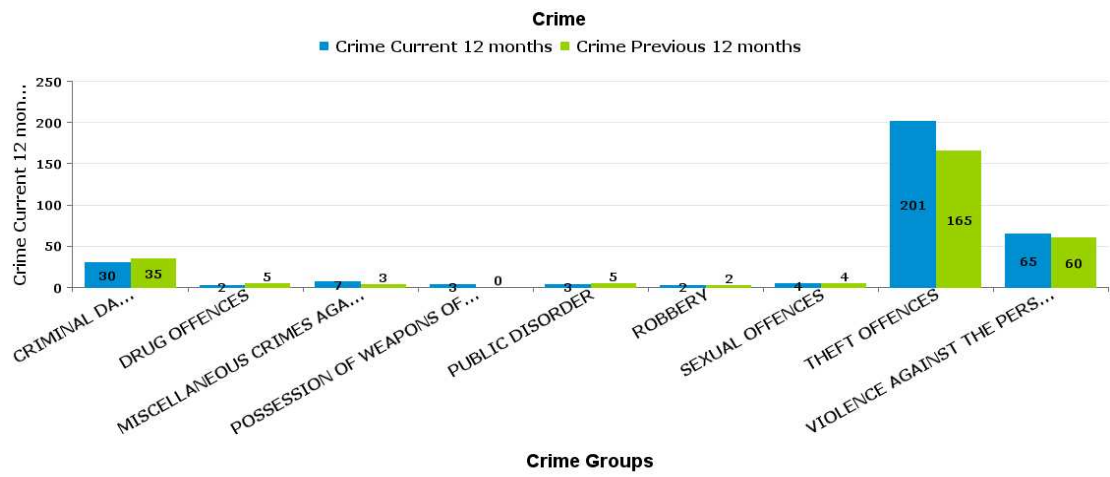
**QUEEN ELEANOR AND BUCCLEUCH**

Crime Group	Current 12 Months 2016-11 2017-10	Previous 12 Months 2015-11 2016-10	+/- Crime	% Change	Number of resolved Crimes	Resolved Rate (past 12mths)
CRIMINAL DAMAGE & ARSON	13	17	-4	-23.53%		
DRUG OFFENCES	4	7	-3	-42.86%	3	75.00%
MISCELLANEOUS CRIMES AGAINST SOCIETY	1	3	-2	-66.67%	1	100.00%
POSSESSION OF WEAPONS OFFENCES	1	1	0	0.00%	1	100.00%
PUBLIC DISORDER	1	0	1	-100.00%		
SEXUAL OFFENCES	1	2	-1	-50.00%	1	100.00%
THEFT OFFENCES	115	69	46	66.67%	5	4.35%
VIOLENCE AGAINST THE PERSON	17	14	3	21.43%	4	23.53%



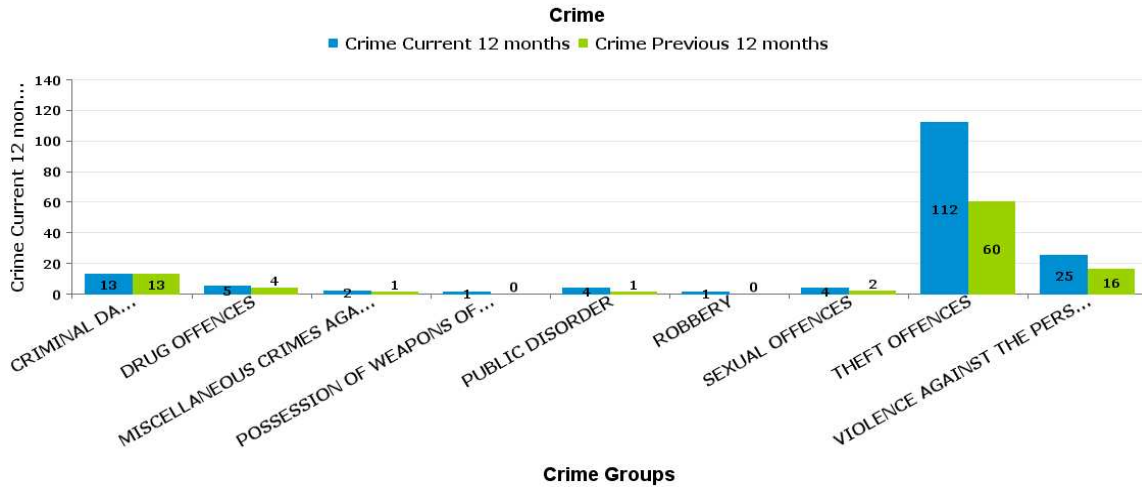
SLADE

Crime Group	Current 12 Months 2016-11 2017-10	Previous 12 Months 2015-11 2016-10	+/- Crime	% Change	Number of resolved Crimes	Resolved Rate (past 12mths)
CRIMINAL DAMAGE & ARSON	30	35	-5	-14.29%	1	3.33%
DRUG OFFENCES	2	5	-3	-60.00%	3	150.00%
MISCELLANEOUS CRIMES AGAINST SOCIETY	7	3	4	133.33%	1	14.29%
POSSESSION OF WEAPONS OFFENCES	3	0	3	-100.00%		
PUBLIC DISORDER	3	5	-2	-40.00%		
ROBBERY	2	2	0	0.00%	1	50.00%
SEXUAL OFFENCES	4	4	0	0.00%	1	25.00%
THEFT OFFENCES	201	165	36	21.82%	8	3.98%
VIOLENCE AGAINST THE PERSON	65	60	5	8.33%	8	12.31%



WELLAND

Crime Group	Current 12 Months 2016-11 2017-10	Previous 12 Months 2015-11 2016-10	+/- Crime	% Change	Number of resolved Crimes	Resolved Rate (past 12mths)
CRIMINAL DAMAGE & ARSON	13	13	0	0.00%	1	7.69%
DRUG OFFENCES	5	4	1	25.00%	3	60.00%
MISCELLANEOUS CRIMES AGAINST SOCIETY	2	1	1	100.00%	1	50.00%
POSSESSION OF WEAPONS OFFENCES	1	0	1	-100.00%		
PUBLIC DISORDER	4	1	3	300.00%	1	25.00%
ROBBERY	1	0	1	-100.00%		
SEXUAL OFFENCES	4	2	2	100.00%	1	25.00%
THEFT OFFENCES	112	60	52	86.67%	4	3.57%
VIOLENCE AGAINST THE PERSON	25	16	9	56.25%	9	36.00%



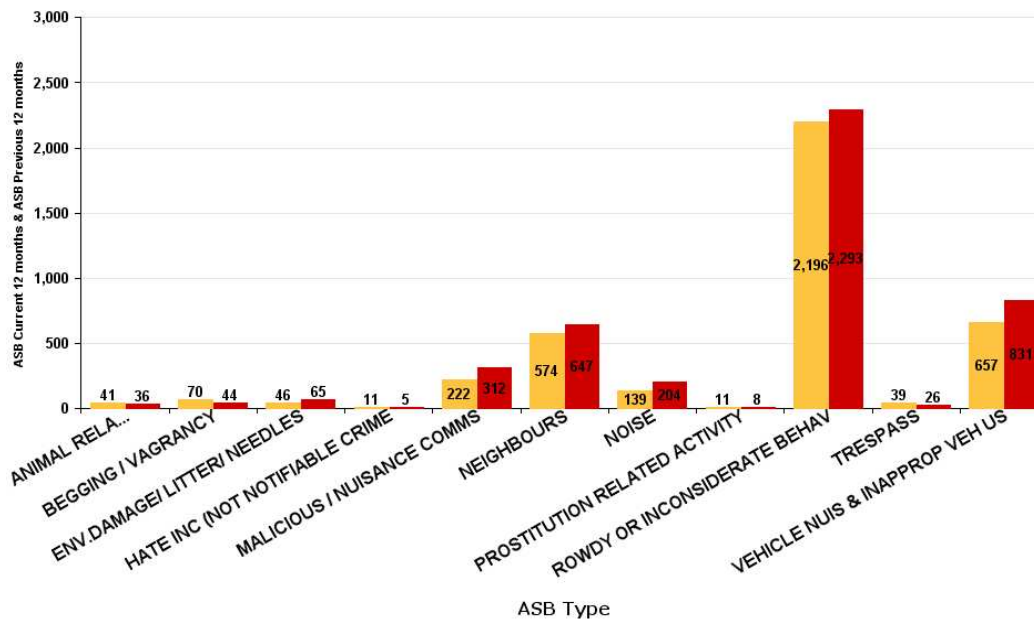
ASB Reports by CSP Sector and Ward

**KETTERING BOROUGH**

ASB Type	Current 12 Months 2016-11 2017-10	Previous 12 Months 2015-11 2016-10	+ / - Crime	% Change
ANIMAL RELATED INC ANTI-SOCIAL	41	36	5	13.89%
BEGGING / VAGRANCY	70	44	26	59.09%
ENV.DAMAGE/ LITTER/ NEEDLES	46	65	-19	-29.23%
HATE INC (NOT NOTIFIABLE CRIME	11	5	6	120.00%
MALICIOUS / NUISANCE COMMS	222	312	-90	-28.85%
NEIGHBOURS	574	647	-73	-11.28%
NOISE	139	204	-65	-31.86%
PROSTITUTION RELATED ACTIVITY	11	8	3	37.50%
ROWDY OR INCONSIDERATE BEHAV	2196	2293	-97	-4.23%
TRESPASS	39	26	13	50.00%
VEHICLE NUIS & INAPPROP VEH US	657	831	-174	-20.94%
<b>Sum:</b>	<b>4006</b>	<b>4471</b>	<b>-465</b>	<b>-10.40%</b>

ASB

■ ASB Current 12 months ■ ASB Previous 12 months



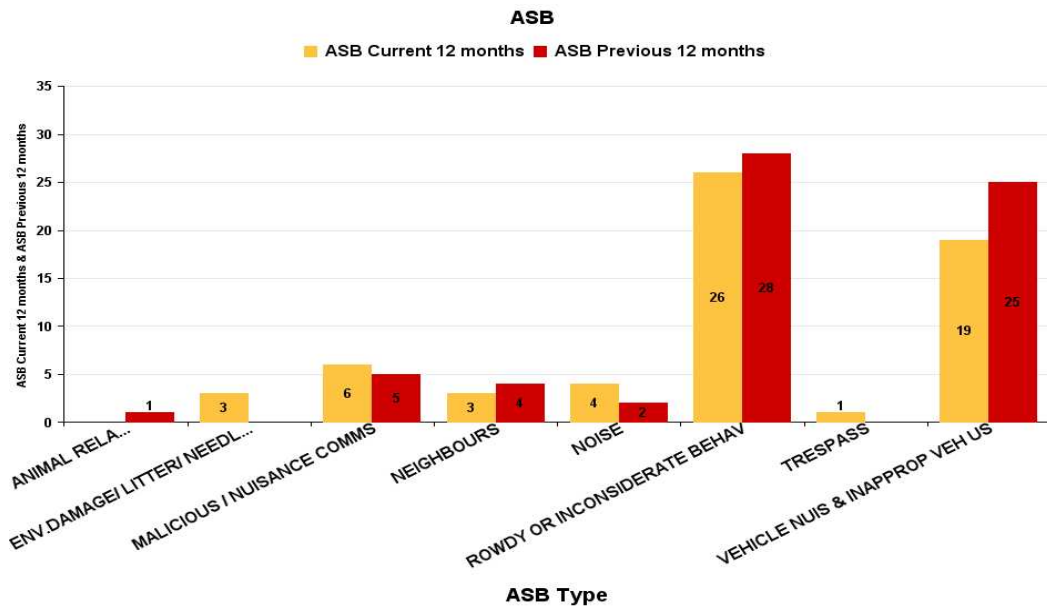
ASB Reports by CSP Sector and Ward

Kettering Rural

**KETTERING RURAL**

**Queen Eleanor and Buccleuch**

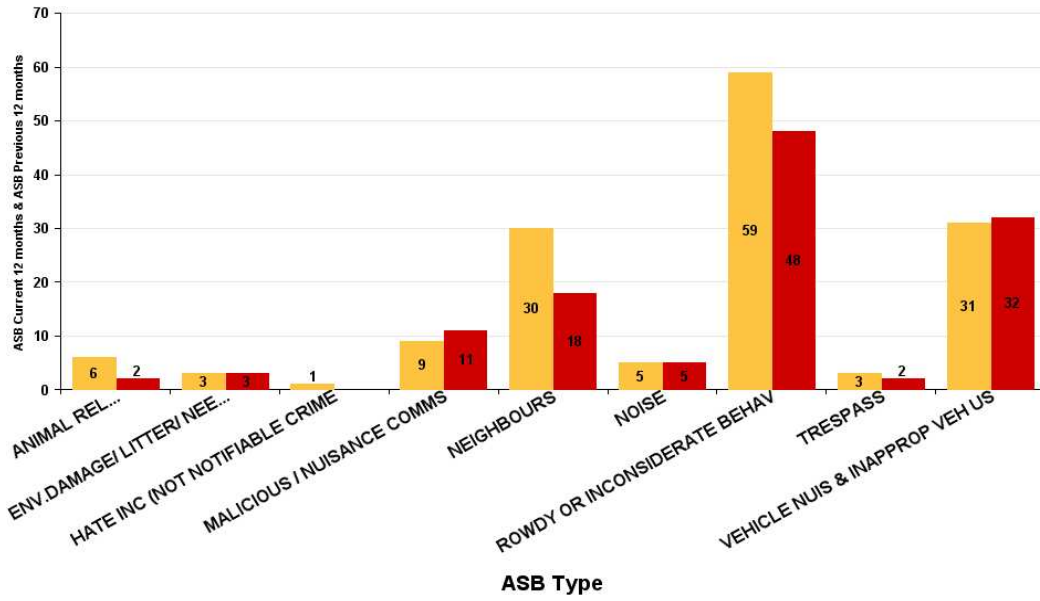
ASB Type	Current 12 Months 2016-11 2017-10	Previous 12 Months 2015-11 2016-10	+/- Crime	% Change
ANIMAL RELATED INC ANTI-SOCIAL		1	-1	-100.00%
ENV.DAMAGE/ LITTER/ NEEDLES	3		3	-100.00%
MALICIOUS / NUISANCE COMMS	6	5	1	20.00%
NEIGHBOURS	3	4	-1	-25.00%
NOISE	4	2	2	100.00%
ROWDY OR INCONSIDERATE BEHAV	26	28	-2	-7.14%
TRESPASS	1		1	-100.00%
VEHICLE NUIS & INAPPROP VEH US	19	25	-6	-24.00%
<b>Sum:</b>	<b>62</b>	<b>65</b>	<b>-3</b>	<b>-4.62%</b>



ASB Type	Current 12 Months 2016-11 2017-10	Previous 12 Months 2015-11 2016-10	+/- Crime	% Change
ANIMAL RELATED INC ANTI-SOCIAL	6	2	4	200.00%
ENV.DAMAGE/ LITTER/ NEEDLES	3	3	0	0.00%
HATE INC (NOT NOTIFIABLE CRIME	1		1	-100.00%
MALICIOUS / NUISANCE COMMS	9	11	-2	-18.18%
NEIGHBOURS	30	18	12	66.67%
NOISE	5	5	0	0.00%
ROWDY OR INCONSIDERATE BEHAV	59	48	11	22.92%
TRESPASS	3	2	1	50.00%
VEHICLE NUIS & INAPPROP VEH US	31	32	-1	-3.13%
<b>Sum:</b>	<b>147</b>	<b>121</b>	<b>26</b>	<b>21.49%</b>

**ASB**

■ ASB Current 12 months ■ ASB Previous 12 months



**Welland**

ASB Type	Current 12 Months 2016-11 2017-10	Previous 12 Months 2015-11 2016-10	+/- Crime	% Change
ANIMAL RELATED INC ANTI-SOCIAL	4	3	1	33.33%
ENV.DAMAGE/ LITTER/ NEEDLES	1	4	-3	-75.00%
MALICIOUS / NUISANCE COMMS	2	7	-5	-71.43%
NEIGHBOURS	6	8	-2	-25.00%
NOISE		1	-1	-100.00%
ROWDY OR INCONSIDERATE BEHAV	13	12	1	8.33%
TRESPASS	2	2	0	0.00%
VEHICLE NUIS & INAPPROP VEH US	21	30	-9	-30.00%
<b>Sum:</b>	<b>49</b>	<b>67</b>	<b>-18</b>	<b>-26.87%</b>

