

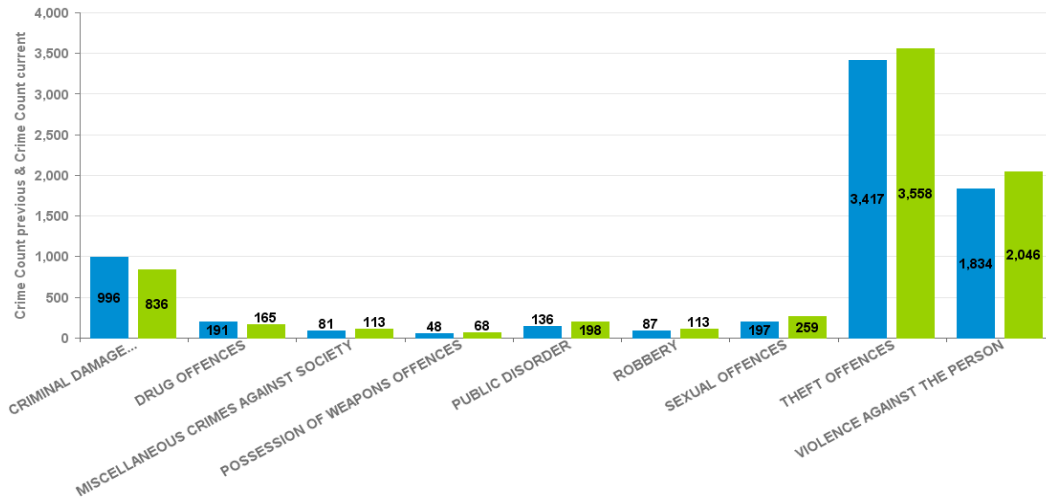
Crime Reports by CSP Sector and Ward

KETTERING BOROUGH

Crime Group	Current 12 Months 2016-11 2017-10	Previous 12 Months 2015-11 2016-10	+/- Crime	% Change	Number of resolved Crimes	Resolved Rate (past 12mths)
CRIMINAL DAMAGE & ARSON	836	996	-160	-16.06%	114	13.64%
DRUG OFFENCES	165	191	-26	-13.61%	133	80.61%
MISCELLANEOUS CRIMES AGAINST SOCIETY	113	81	32	39.51%	38	33.63%
POSSESSION OF WEAPONS OFFENCES	68	48	20	41.67%	41	60.29%
PUBLIC DISORDER	198	136	62	45.59%	67	33.84%
ROBBERY	113	87	26	29.89%	33	29.20%
SEXUAL OFFENCES	259	197	62	31.47%	25	9.65%
THEFT OFFENCES	3558	3417	141	4.13%	415	11.66%
VIOLENCE AGAINST THE PERSON	2046	1834	212	11.56%	417	20.38%

All Crime

■ Crime Count previous ■ Crime Count current



Crime Tree LV2 Desc

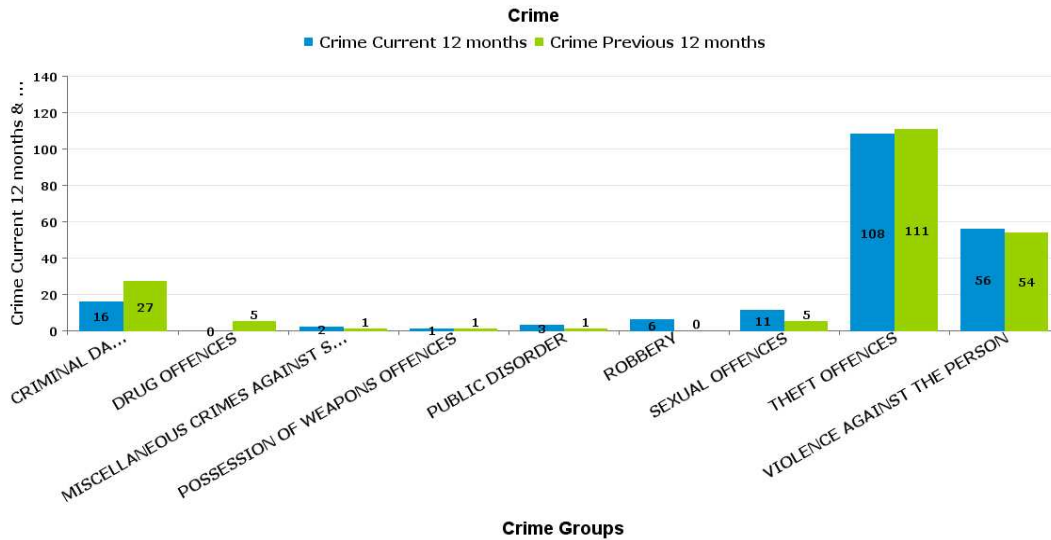
Crime Reports by CSP Sector and Ward

Kettering A6 Towns

KETTERING

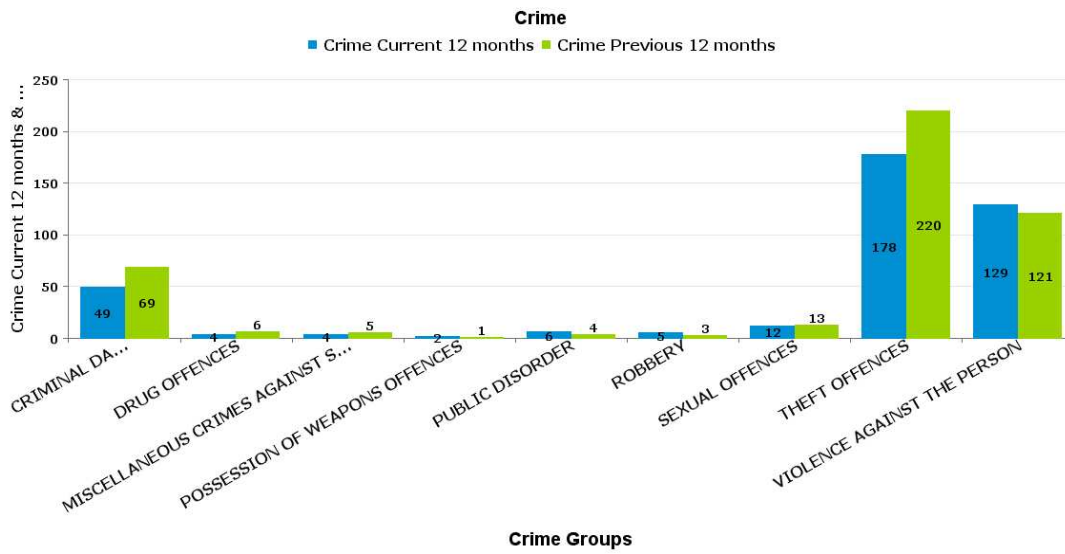
BARTON

Crime Group	Current 12 Months 2016-11 2017-10	Previous 12 Months 2015-11 2016-10	+/- Crime	% Change	Number of resolved Crimes	Resolved Rate (past 12mths)
CRIMINAL DAMAGE & ARSON	16	27	-11	-40.74%	2	12.50%
DRUG OFFENCES	0	5	-5	-100.00%	1	
MISCELLANEOUS CRIMES AGAINST SOCIETY	2	1	1	100.00%	1	50.00%
POSSESSION OF WEAPONS OFFENCES	1	1	0	0.00%	1	100.00%
PUBLIC DISORDER	3	1	2	200.00%	1	33.33%
ROBBERY	6	0	6	-100.00%		
SEXUAL OFFENCES	11	5	6	120.00%	1	9.09%
THEFT OFFENCES	108	111	-3	-2.70%	9	8.33%
VIOLENCE AGAINST THE PERSON	56	54	2	3.70%	20	35.71%



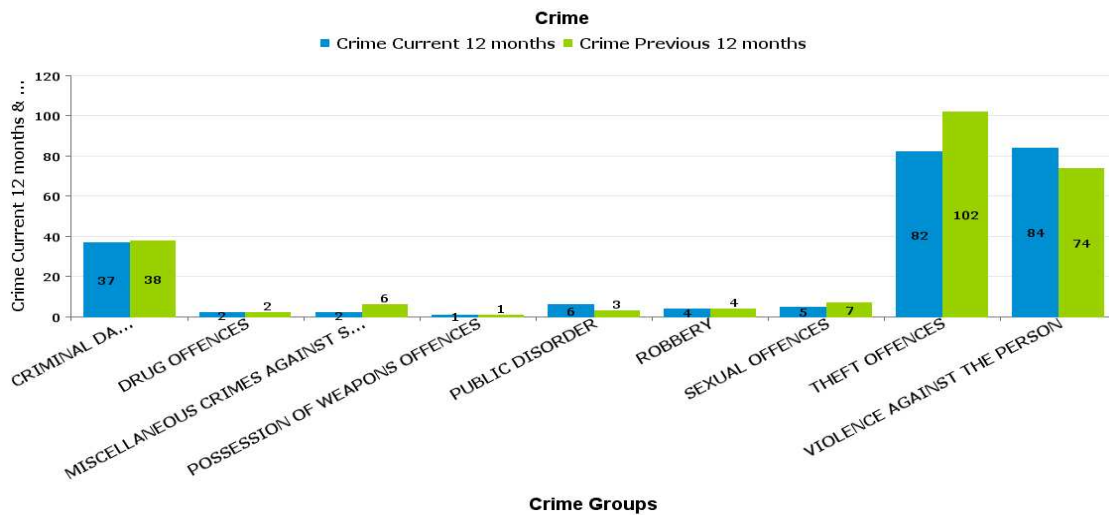
BURTON LATIMER

Crime Group	Current 12 Months 2016-11 2017-10	Previous 12 Months 2015-11 2016-10	+/- Crime	% Change	Number of resolved Crimes	Resolved Rate (past 12mths)
CRIMINAL DAMAGE & ARSON	49	69	-20	-28.99%	7	14.29%
DRUG OFFENCES	4	6	-2	-33.33%	3	75.00%
MISCELLANEOUS CRIMES AGAINST SOCIETY	4	5	-1	-20.00%		
POSSESSION OF WEAPONS OFFENCES	2	1	1	100.00%	1	50.00%
PUBLIC DISORDER	6	4	2	50.00%	1	16.67%
ROBBERY	5	3	2	66.67%	1	20.00%
SEXUAL OFFENCES	12	13	-1	-7.69%		
THEFT OFFENCES	178	220	-42	-19.09%	26	14.61%
VIOLENCE AGAINST THE PERSON	129	121	8	6.61%	26	20.16%



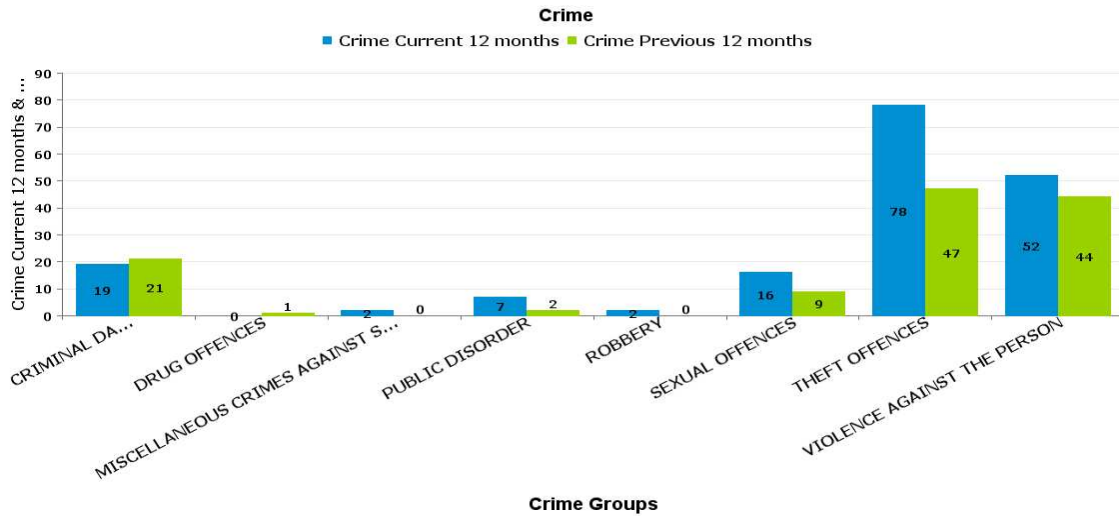
DESBOROUGH LOATLAND

Crime Group	Current 12 Months 2016-11 2017-10	Previous 12 Months 2015-11 2016-10	+/- Crime	% Change	Number of resolved Crimes	Resolved Rate (past 12mths)
CRIMINAL DAMAGE & ARSON	37	38	-1	-2.63%	4	10.81%
DRUG OFFENCES	2	2	0	0.00%	1	50.00%
MISCELLANEOUS CRIMES AGAINST SOCIETY	2	6	-4	-66.67%	1	50.00%
POSSESSION OF WEAPONS OFFENCES	1	1	0	0.00%		
PUBLIC DISORDER	6	3	3	100.00%	2	33.33%
ROBBERY	4	4	0	0.00%		
SEXUAL OFFENCES	5	7	-2	-28.57%	3	60.00%
THEFT OFFENCES	82	102	-20	-19.61%	2	2.44%
VIOLENCE AGAINST THE PERSON	84	74	10	13.51%	20	23.81%



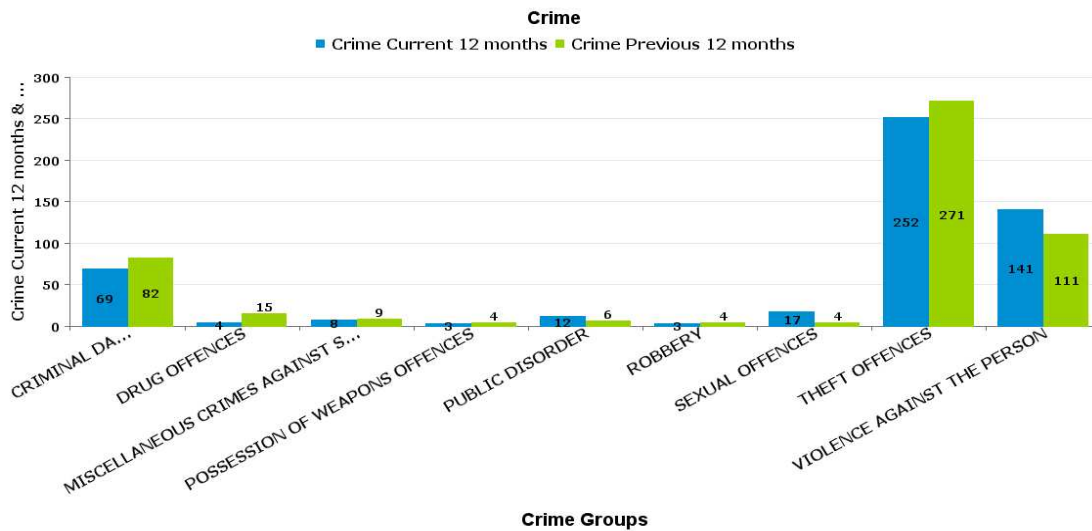
DESBOROUGH ST GILES

Crime Group	Current 12 Months 2016-11 2017-10	Previous 12 Months 2015-11 2016-10	+/- Crime	% Change	Number of resolved Crimes	Resolved Rate (past 12mths)
CRIMINAL DAMAGE & ARSON	19	21	-2	-9.52%	1	5.26%
DRUG OFFENCES	0	1	-1	-100.00%		
MISCELLANEOUS CRIMES AGAINST SOCIETY	2	0	2	-100.00%	1	50.00%
PUBLIC DISORDER	7	2	5	250.00%	2	28.57%
ROBBERY	2	0	2	-100.00%		
SEXUAL OFFENCES	16	9	7	77.78%		
THEFT OFFENCES	78	47	31	65.96%	1	1.28%
VIOLENCE AGAINST THE PERSON	52	44	8	18.18%	6	11.54%



ROTHWELL

Crime Group	Current 12 Months 2016-11 2017-10	Previous 12 Months 2015-11 2016-10	+/- Crime	% Change	Number of resolved Crimes	Resolved Rate (past 12mths)
CRIMINAL DAMAGE & ARSON	69	82	-13	-15.85%	4	5.80%
DRUG OFFENCES	4	15	-11	-73.33%	5	125.00%
MISCELLANEOUS CRIMES AGAINST SOCIETY	8	9	-1	-11.11%	3	37.50%
POSSESSION OF WEAPONS OFFENCES	3	4	-1	-25.00%	2	66.67%
PUBLIC DISORDER	12	6	6	100.00%	1	8.33%
ROBBERY	3	4	-1	-25.00%	2	66.67%
SEXUAL OFFENCES	17	4	13	325.00%	1	5.88%
THEFT OFFENCES	252	271	-19	-7.01%	12	4.76%
VIOLENCE AGAINST THE PERSON	141	111	30	27.03%	25	17.73%



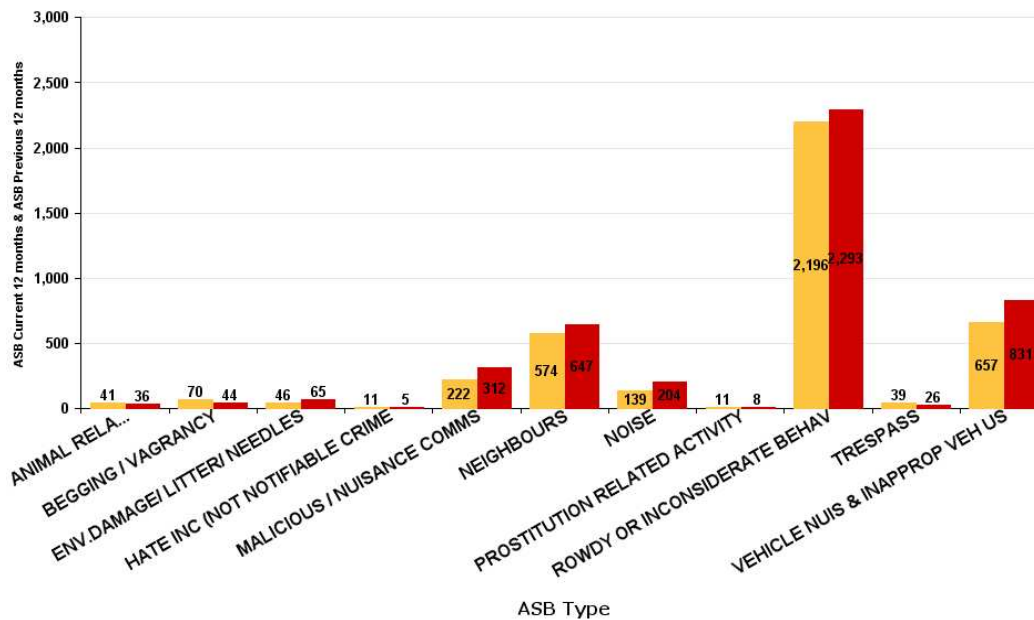
ASB Reports by CSP Sector and Ward

KETTERING BOROUGH

ASB Type	Current 12 Months 2016-11 2017-10	Previous 12 Months 2015-11 2016-10	+/- Crime	% Change
ANIMAL RELATED INC ANTI-SOCIAL	41	36	5	13.89%
BEGGING / VAGRANCY	70	44	26	59.09%
ENV.DAMAGE/ LITTER/ NEEDLES	46	65	-19	-29.23%
HATE INC (NOT NOTIFIABLE CRIME	11	5	6	120.00%
MALICIOUS / NUISANCE COMMS	222	312	-90	-28.85%
NEIGHBOURS	574	647	-73	-11.28%
NOISE	139	204	-65	-31.86%
PROSTITUTION RELATED ACTIVITY	11	8	3	37.50%
ROWDY OR INCONSIDERATE BEHAV	2196	2293	-97	-4.23%
TRESPASS	39	26	13	50.00%
VEHICLE NUIS & INAPPROP VEH US	657	831	-174	-20.94%
Sum:	4006	4471	-465	-10.40%

ASB

■ ASB Current 12 months ■ ASB Previous 12 months



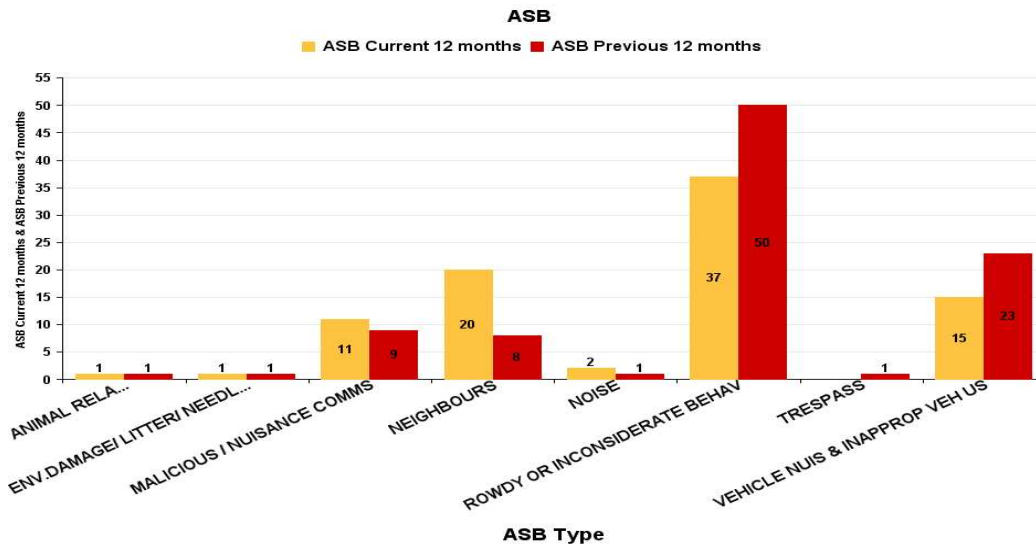
ASB Reports by CSP Sector and Ward

Kettering A6 Towns ASB

KETTERING A6 TOWNS

Barton

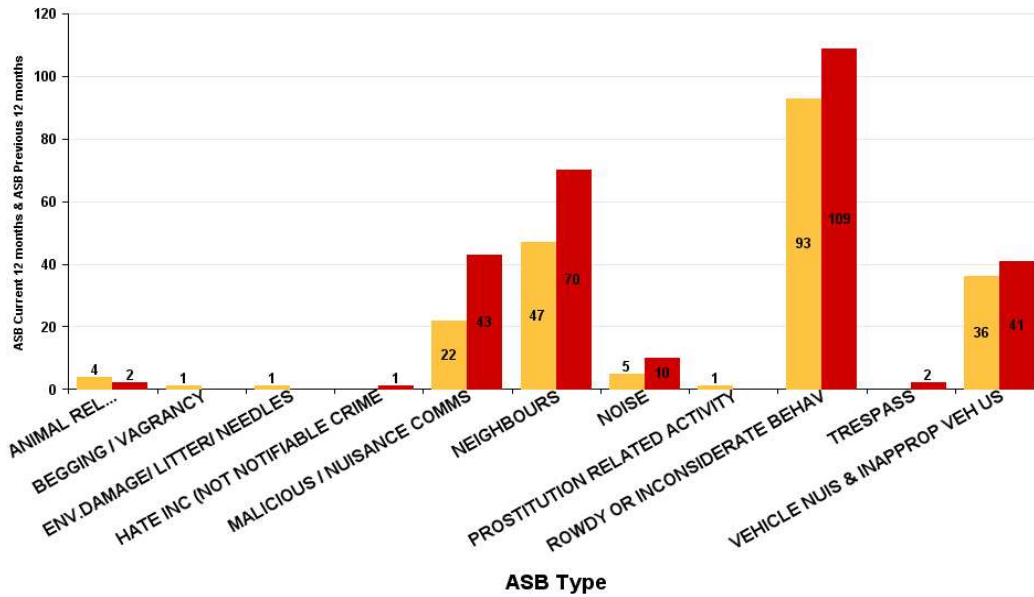
ASB Type	Current 12 Months 2016-11 2017-10	Previous 12 Months 2015-11 2016-10	+/- Crime	% Change
ANIMAL RELATED INC ANTI-SOCIAL	1	1	0	0.00%
ENV.DAMAGE/ LITTER/ NEEDLES	1	1	0	0.00%
MALICIOUS / NUISANCE COMMS	11	9	2	22.22%
NEIGHBOURS	20	8	12	150.00%
NOISE	2	1	1	100.00%
ROWDY OR INCONSIDERATE BEHAV	37	50	-13	-26.00%
TRESPASS		1	-1	-100.00%
VEHICLE NUIS & INAPPROP VEH US	15	23	-8	-34.78%
Sum:	87	94	-7	-7.45%



ASB Type	Current 12 Months 2016-11 2017-10	Previous 12 Months 2015-11 2016-10	+/- Crime	% Change
ANIMAL RELATED INC ANTI-SOCIAL	4	2	2	100.00%
BEGGING / VAGRANCY	1		1	-100.00%
ENV.DAMAGE/ LITTER/ NEEDLES	1		1	-100.00%
HATE INC (NOT NOTIFIABLE CRIME		1	-1	-100.00%
MALICIOUS / NUISANCE COMMS	22	43	-21	-48.84%
NEIGHBOURS	47	70	-23	-32.86%
NOISE	5	10	-5	-50.00%
PROSTITUTION RELATED ACTIVITY	1		1	-100.00%
ROWDY OR INCONSIDERATE BEHAV	93	109	-16	-14.68%
TRESPASS		2	-2	-100.00%
VEHICLE NUIS & INAPPROP VEH US	36	41	-5	-12.20%
Sum:	210	278	-68	-24.46%

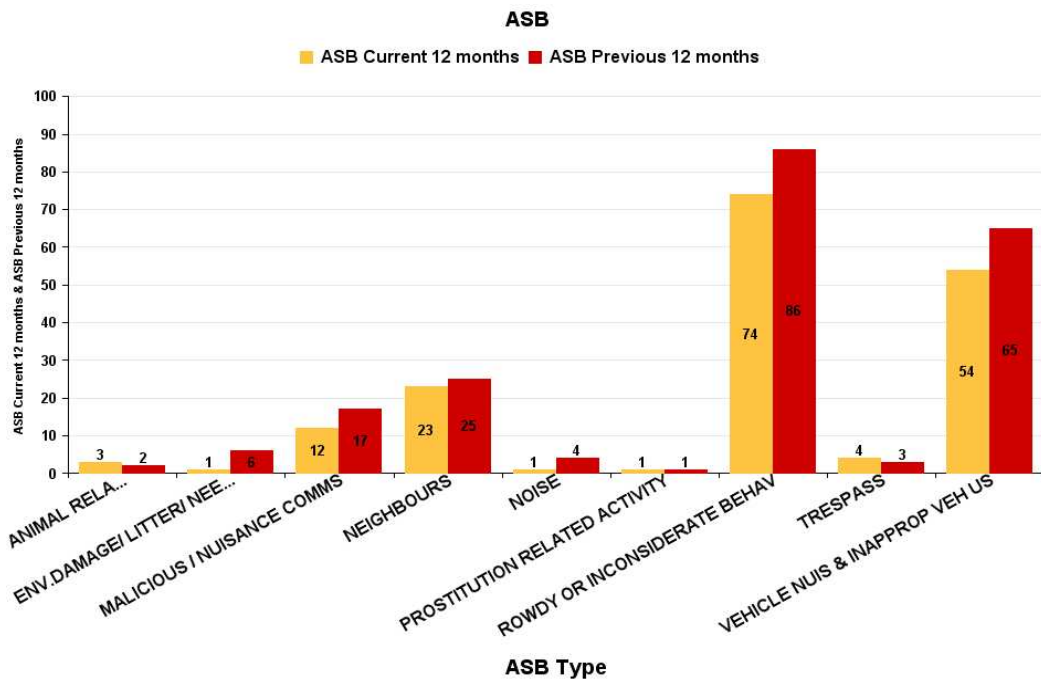
ASB

■ ASB Current 12 months ■ ASB Previous 12 months



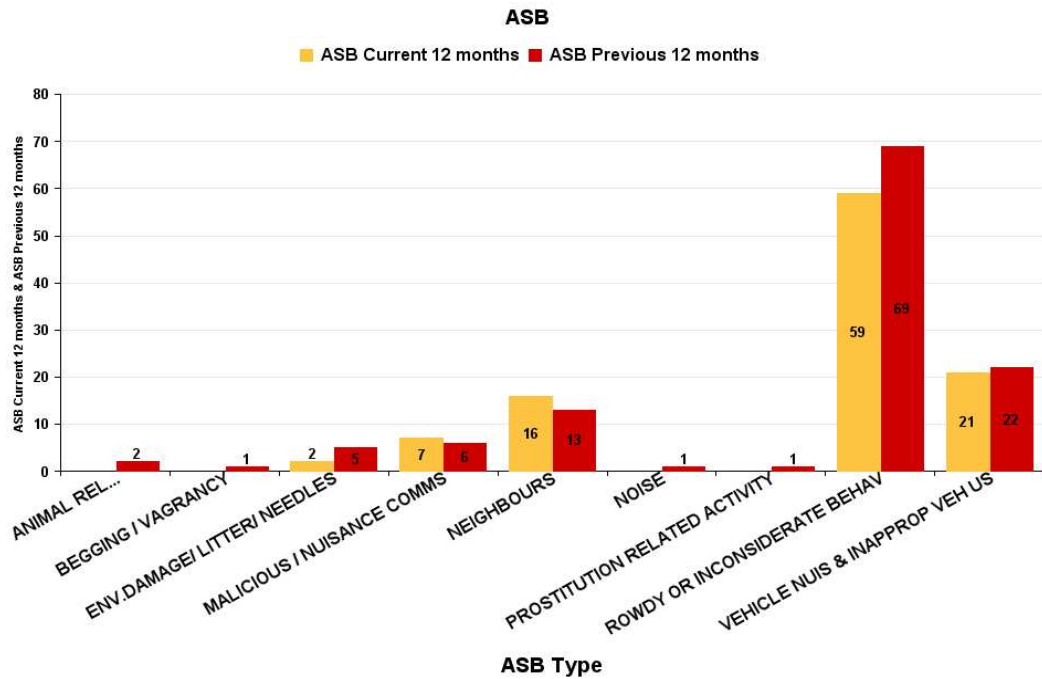
Desborough Loatland

ASB Type	Current 12 Months 2016-11 2017-10	Previous 12 Months 2015-11 2016-10	+/- Crime	% Change
ANIMAL RELATED INC ANTI-SOCIAL	3	2	1	50.00%
ENV.DAMAGE/ LITTER/ NEEDLES	1	6	-5	-83.33%
MALICIOUS / NUISANCE COMMS	12	17	-5	-29.41%
NEIGHBOURS	23	25	-2	-8.00%
NOISE	1	4	-3	-75.00%
PROSTITUTION RELATED ACTIVITY	1	1	0	0.00%
ROWDY OR INCONSIDERATE BEHAV	74	86	-12	-13.95%
TRESPASS	4	3	1	33.33%
VEHICLE NUIS & INAPPROP VEH US	54	65	-11	-16.92%
Sum:	173	209	-36	-17.22%



Desborough St Giles

ASB Type	Current 12 Months 2016-11 2017-10	Previous 12 Months 2015-11 2016-10	+/- Crime	% Change
ANIMAL RELATED INC ANTI-SOCIAL		2	-2	-100.00%
BEGGING / VAGRANCY		1	-1	-100.00%
ENV.DAMAGE/ LITTER/ NEEDLES	2	5	-3	-60.00%
MALICIOUS / NUISANCE COMMS	7	6	1	16.67%
NEIGHBOURS	16	13	3	23.08%
NOISE		1	-1	-100.00%
PROSTITUTION RELATED ACTIVITY		1	-1	-100.00%
ROWDY OR INCONSIDERATE BEHAV	59	69	-10	-14.49%
VEHICLE NUIS & INAPPROP VEH US	21	22	-1	-4.55%
Sum:	105	120	-15	-12.50%



Rothwell

ASB Type	Current 12 Months 2016-11 2017-10	Previous 12 Months 2015-11 2016-10	+/- Crime	% Change
ANIMAL RELATED INC ANTI-SOCIAL	8	2	6	300.00%
BEGGING / VAGRANCY	1	1	0	0.00%
ENV.DAMAGE/ LITTER/ NEEDLES	5	3	2	66.67%
MALICIOUS / NUISANCE COMMS	16	21	-5	-23.81%
NEIGHBOURS	45	57	-12	-21.05%
NOISE	5	9	-4	-44.44%
ROWDY OR INCONSIDERATE BEHAV	132	141	-9	-6.38%
TRESPASS	1	1	0	0.00%
VEHICLE NUIS & INAPPROP VEH US	61	55	6	10.91%
Sum:	274	290	-16	-5.52%

