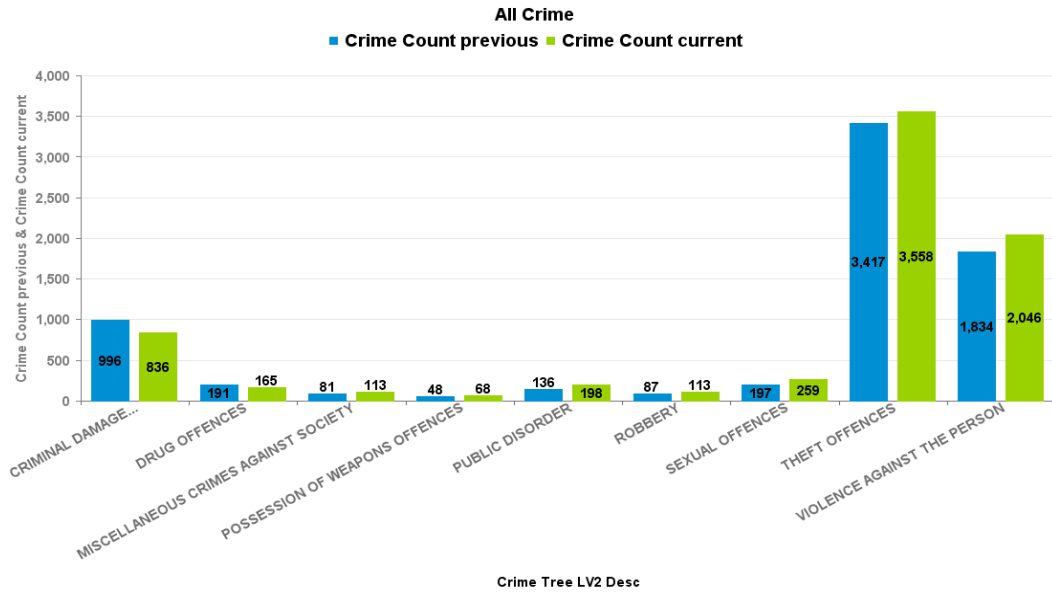


Crime Reports by CSP Sector and Ward

KETTERING BOROUGH

Crime Group	Current 12 Months 2016-11 2017-10	Previous 12 Months 2015-11 2016-10	+/- Crime	% Change	Number of resolved Crimes	Resolved Rate (past 12mths)
CRIMINAL DAMAGE & ARSON	836	996	-160	-16.06%	114	13.64%
DRUG OFFENCES	165	191	-26	-13.61%	133	80.61%
MISCELLANEOUS CRIMES AGAINST SOCIETY	113	81	32	39.51%	38	33.63%
POSSESSION OF WEAPONS OFFENCES	68	48	20	41.67%	41	60.29%
PUBLIC DISORDER	198	136	62	45.59%	67	33.84%
ROBBERY	113	87	26	29.89%	33	29.20%
SEXUAL OFFENCES	259	197	62	31.47%	25	9.65%
THEFT OFFENCES	3558	3417	141	4.13%	415	11.66%
VIOLENCE AGAINST THE PERSON	2046	1834	212	11.56%	417	20.38%



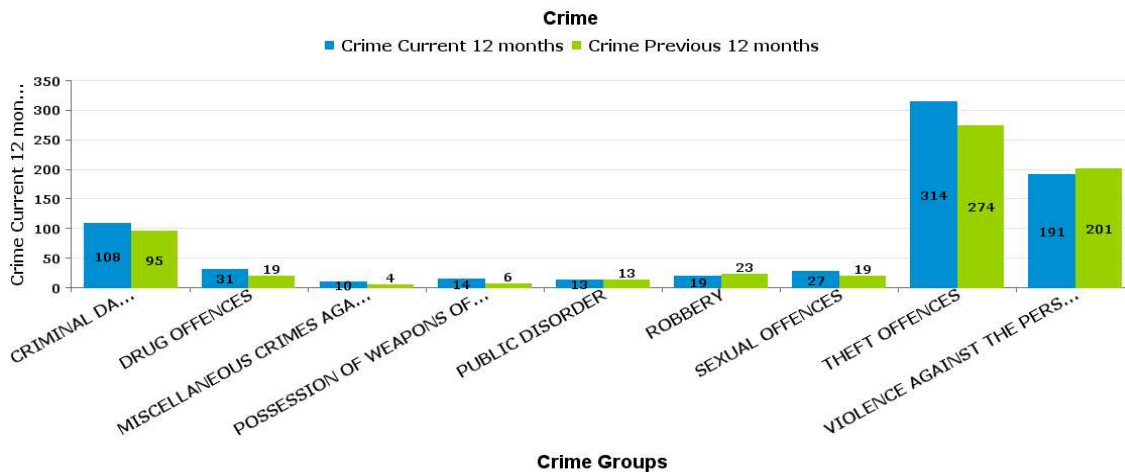
Crime Reports by CSP Sector and Ward

Kettering Town

KETTERING

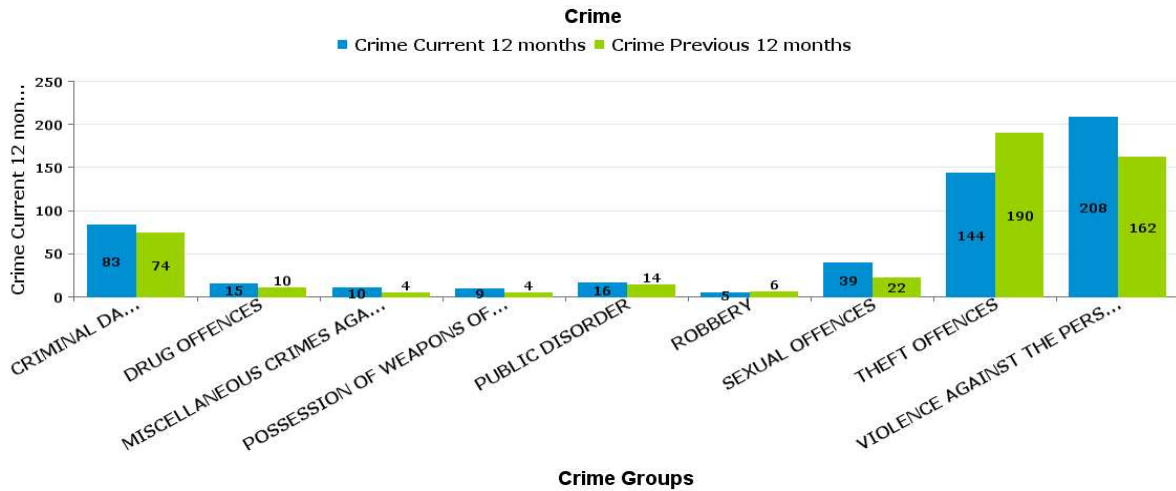
ALL SAINTS

Crime Group	Current 12 Months 2016-11 2017-10	Previous 12 Months 2015-11 2016-10	+/- Crime	% Change	Number of resolved Crimes	Resolved Rate (past 12mths)
CRIMINAL DAMAGE & ARSON	108	95	13	13.68%	26	24.07%
DRUG OFFENCES	31	19	12	63.16%	29	93.55%
MISCELLANEOUS CRIMES AGAINST SOCIETY	10	4	6	150.00%	2	20.00%
POSSESSION OF WEAPONS OFFENCES	14	6	8	133.33%	5	35.71%
PUBLIC DISORDER	13	13	0	0.00%	4	30.77%
ROBBERY	19	23	-4	-17.39%	6	31.58%
SEXUAL OFFENCES	27	19	8	42.11%	3	11.11%
THEFT OFFENCES	314	274	40	14.60%	50	15.92%
VIOLENCE AGAINST THE PERSON	191	201	-10	-4.98%	38	19.90%



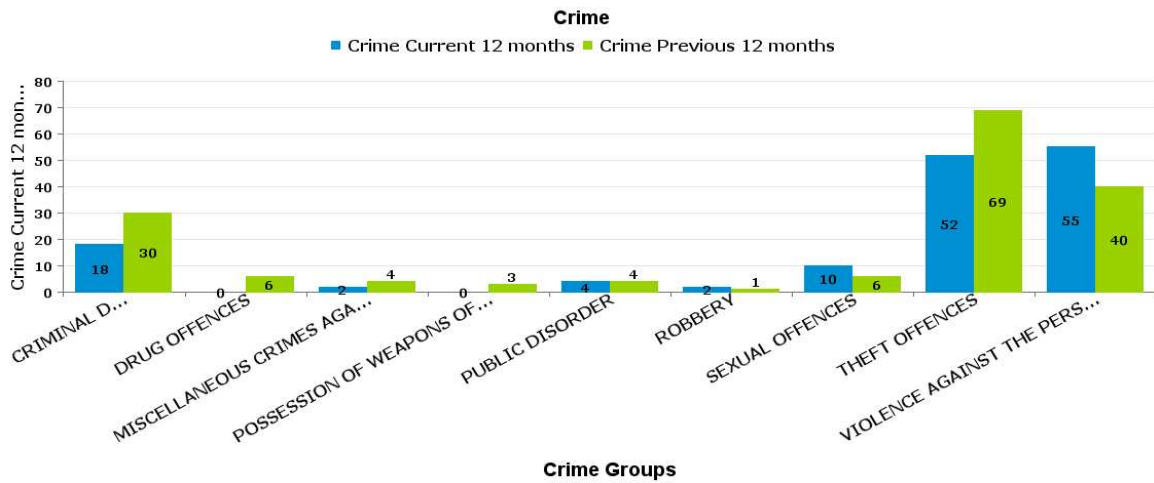
AVONDALE GRANGE

Crime Group	Current 12 Months 2016-11 2017-10	Previous 12 Months 2015-11 2016-10	+/- Crime	% Change	Number of resolved Crimes	Resolved Rate (past 12mths)
CRIMINAL DAMAGE & ARSON	83	74	9	12.16%	11	13.25%
DRUG OFFENCES	15	10	5	50.00%	7	46.67%
MISCELLANEOUS CRIMES AGAINST SOCIETY	10	4	6	150.00%	2	20.00%
POSSESSION OF WEAPONS OFFENCES	9	4	5	125.00%	3	33.33%
PUBLIC DISORDER	16	14	2	14.29%	7	43.75%
ROBBERY	5	6	-1	-16.67%	3	60.00%
SEXUAL OFFENCES	39	22	17	77.27%	2	5.13%
THEFT OFFENCES	144	190	-46	-24.21%	25	17.36%
VIOLENCE AGAINST THE PERSON	208	162	46	28.40%	35	16.83%



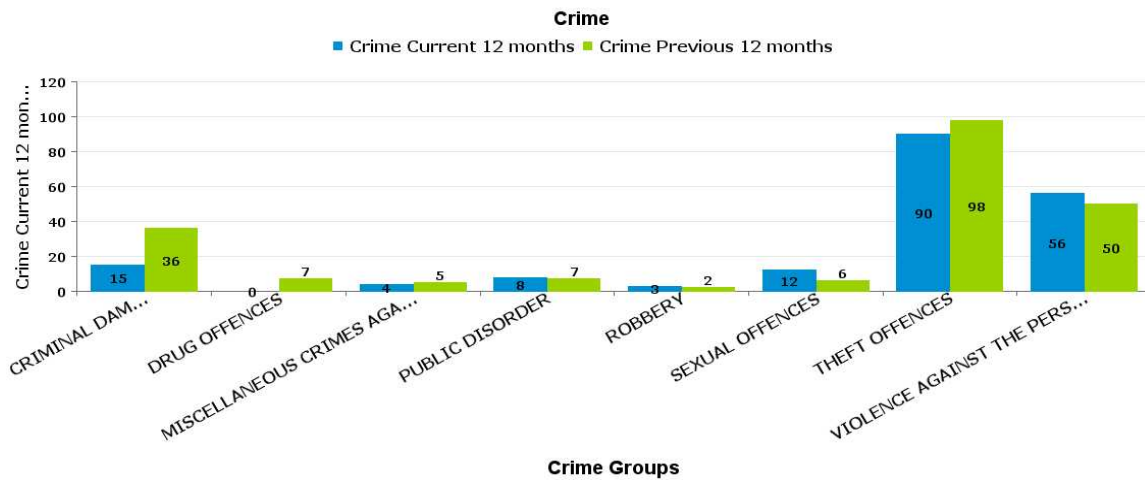
BRAMBLESIDE

Crime Group	Current 12 Months 2016-11 2017-10	Previous 12 Months 2015-11 2016-10	+/- Crime	% Change	Number of resolved Crimes	Resolved Rate (past 12mths)
CRIMINAL DAMAGE & ARSON	18	30	-12	-40.00%	5	27.78%
DRUG OFFENCES	0	6	-6	-100.00%		
MISCELLANEOUS CRIMES AGAINST SOCIETY	2	4	-2	-50.00%	2	100.00%
POSSESSION OF WEAPONS OFFENCES	0	3	-3	-100.00%	1	
PUBLIC DISORDER	4	4	0	0.00%		
ROBBERY	2	1	1	100.00%	1	50.00%
SEXUAL OFFENCES	10	6	4	66.67%	1	10.00%
THEFT OFFENCES	52	69	-17	-24.64%	1	1.92%
VIOLENCE AGAINST THE PERSON	55	40	15	37.50%	18	32.73%



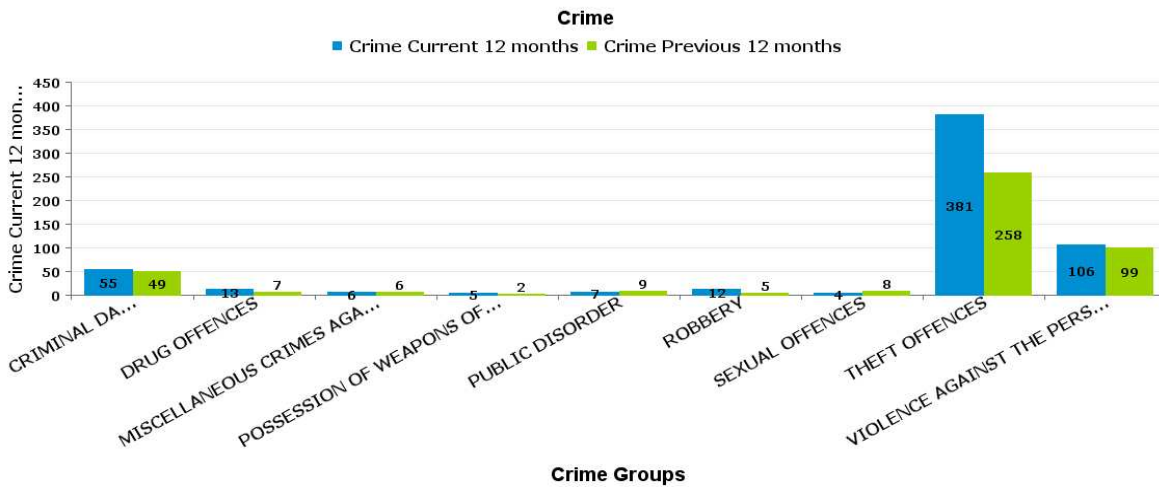
ISE LODGE

Crime Group	Current 12 Months 2016-11 2017-10	Previous 12 Months 2015-11 2016-10	+/- Crime	% Change	Number of resolved Crimes	Resolved Rate (past 12mths)
CRIMINAL DAMAGE & ARSON	15	36	-21	-58.33%	2	13.33%
DRUG OFFENCES	0	7	-7	-100.00%		
MISCELLANEOUS CRIMES AGAINST SOCIETY	4	5	-1	-20.00%	1	25.00%
PUBLIC DISORDER	8	7	1	14.29%	2	25.00%
ROBBERY	3	2	1	50.00%	1	33.33%
SEXUAL OFFENCES	12	6	6	100.00%	2	16.67%
THEFT OFFENCES	90	98	-8	-8.16%	16	17.78%
VIOLENCE AGAINST THE PERSON	56	50	6	12.00%	8	14.29%



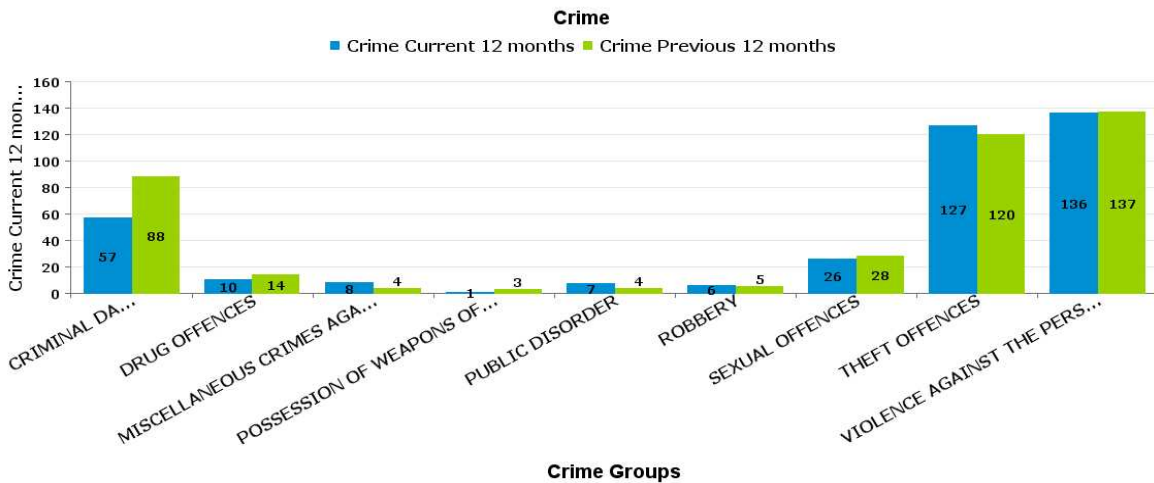
NORTHFIELD

Crime Group	Current 12 Months 2016-11 2017-10	Previous 12 Months 2015-11 2016-10	+/- Crime	% Change	Number of resolved Crimes	Resolved Rate (past 12mths)
CRIMINAL DAMAGE & ARSON	55	49	6	12.24%	6	10.91%
DRUG OFFENCES	13	7	6	85.71%	9	69.23%
MISCELLANEOUS CRIMES AGAINST SOCIETY	6	6	0	0.00%	2	33.33%
POSSESSION OF WEAPONS OFFENCES	5	2	3	150.00%	3	60.00%
PUBLIC DISORDER	7	9	-2	-22.22%	1	14.29%
ROBBERY	12	5	7	140.00%	2	16.67%
SEXUAL OFFENCES	4	8	-4	-50.00%		
THEFT OFFENCES	381	258	123	47.67%	62	16.27%
VIOLENCE AGAINST THE PERSON	106	99	7	7.07%	13	12.26%



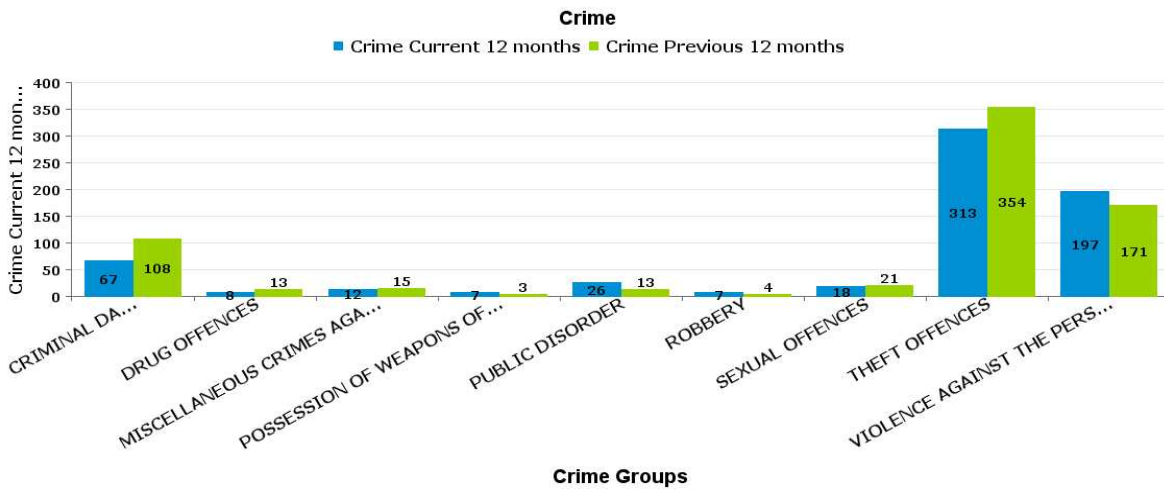
PIPERS HILL

Crime Group	Current 12 Months 2016-11 2017-10	Previous 12 Months 2015-11 2016-10	+/- Crime	% Change	Number of resolved Crimes	Resolved Rate (past 12mths)
CRIMINAL DAMAGE & ARSON	57	88	-31	-35.23%	7	12.28%
DRUG OFFENCES	10	14	-4	-28.57%	7	70.00%
MISCELLANEOUS CRIMES AGAINST SOCIETY	8	4	4	100.00%	4	50.00%
POSSESSION OF WEAPONS OFFENCES	1	3	-2	-66.67%	1	100.00%
PUBLIC DISORDER	7	4	3	75.00%	2	28.57%
ROBBERY	6	5	1	20.00%	4	66.67%
SEXUAL OFFENCES	26	28	-2	-7.14%	1	3.85%
THEFT OFFENCES	127	120	7	5.83%	10	7.87%
VIOLENCE AGAINST THE PERSON	136	137	-1	-0.73%	18	13.24%



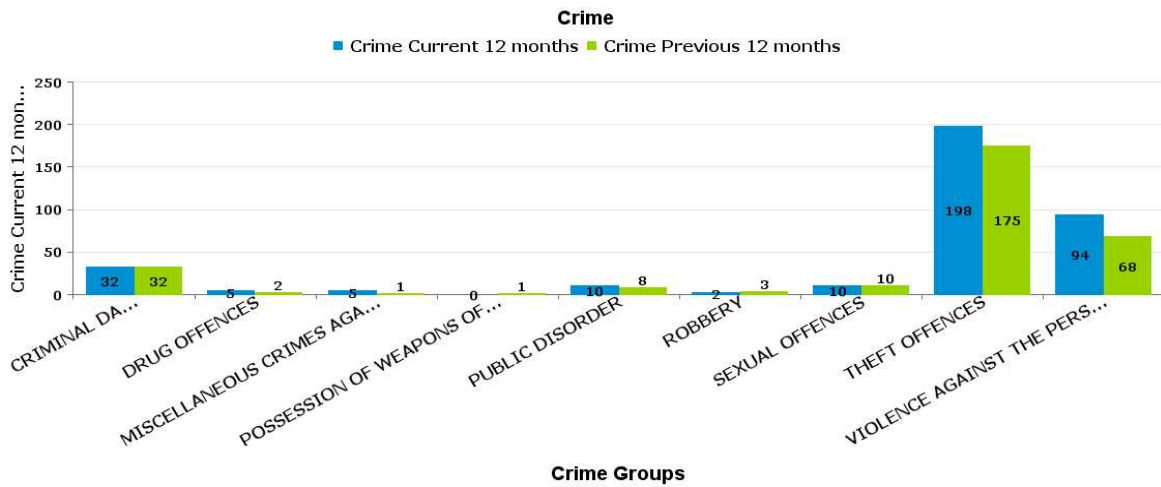
ST MICHAELS AND WICKSTEED

Crime Group	Current 12 Months 2016-11 2017-10	Previous 12 Months 2015-11 2016-10	+/- Crime	% Change	Number of resolved Crimes	Resolved Rate (past 12mths)
CRIMINAL DAMAGE & ARSON	67	108	-41	-37.96%	3	4.48%
DRUG OFFENCES	8	13	-5	-38.46%	9	112.50%
MISCELLANEOUS CRIMES AGAINST SOCIETY	12	15	-3	-20.00%	4	33.33%
POSSESSION OF WEAPONS OFFENCES	7	3	4	133.33%	4	57.14%
PUBLIC DISORDER	26	13	13	100.00%	11	42.31%
ROBBERY	7	4	3	75.00%	3	42.86%
SEXUAL OFFENCES	18	21	-3	-14.29%	5	27.78%
THEFT OFFENCES	313	354	-41	-11.58%	28	8.95%
VIOLENCE AGAINST THE PERSON	197	171	26	15.20%	34	17.26%



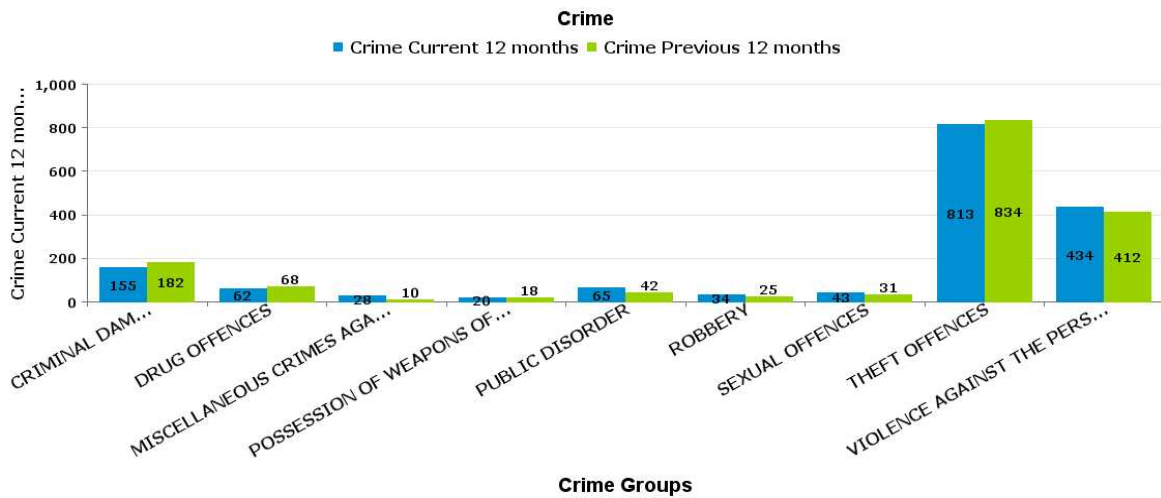
ST PETERS

Crime Group	Current 12 Months 2016-11 2017-10	Previous 12 Months 2015-11 2016-10	+/- Crime	% Change	Number of resolved Crimes	Resolved Rate (past 12mths)
CRIMINAL DAMAGE & ARSON	32	32	0	0.00%	7	21.88%
DRUG OFFENCES	5	2	3	150.00%	2	40.00%
MISCELLANEOUS CRIMES AGAINST SOCIETY	5	1	4	400.00%	3	60.00%
POSSESSION OF WEAPONS OFFENCES	0	1	-1	-100.00%		
PUBLIC DISORDER	10	8	2	25.00%	2	20.00%
ROBBERY	2	3	-1	-33.33%		
SEXUAL OFFENCES	10	10	0	0.00%	3	30.00%
THEFT OFFENCES	198	175	23	13.14%	12	6.06%
VIOLENCE AGAINST THE PERSON	94	68	26	38.24%	33	35.11%



WILLIAM KNIBB

Crime Group	Current 12 Months 2016-11 2017-10	Previous 12 Months 2015-11 2016-10	+/- Crime	% Change	Number of resolved Crimes	Resolved Rate (past 12mths)
CRIMINAL DAMAGE & ARSON	155	182	-27	-14.84%	34	21.94%
DRUG OFFENCES	62	68	-6	-8.82%	56	90.32%
MISCELLANEOUS CRIMES AGAINST SOCIETY	28	10	18	180.00%	9	32.14%
POSSESSION OF WEAPONS OFFENCES	20	18	2	11.11%	19	95.00%
PUBLIC DISORDER	65	42	23	54.76%	30	46.15%
ROBBERY	34	25	9	36.00%	10	29.41%
SEXUAL OFFENCES	43	31	12	38.71%	4	9.30%
THEFT OFFENCES	813	834	-21	-2.52%	152	18.70%
VIOLENCE AGAINST THE PERSON	434	412	22	5.34%	111	25.58%



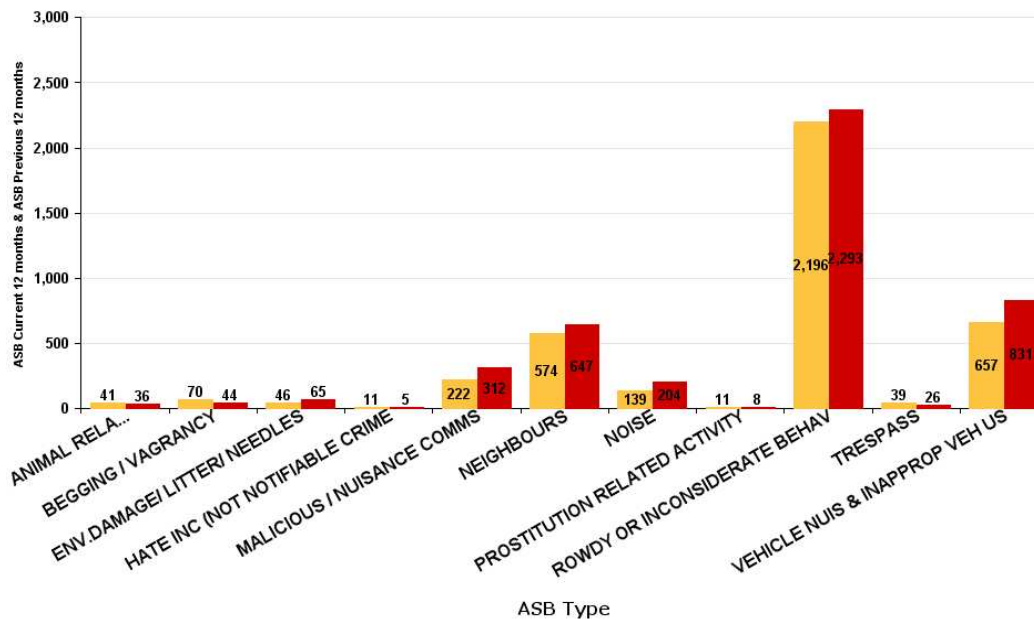
ASB Reports by CSP Sector and Ward

KETTERING BOROUGH

ASB Type	Current 12 Months 2016-11 2017-10	Previous 12 Months 2015-11 2016-10	+ / - Crime	% Change
ANIMAL RELATED INC ANTI-SOCIAL	41	36	5	13.89%
BEGGING / VAGRANCY	70	44	26	59.09%
ENV.DAMAGE/ LITTER/ NEEDLES	46	65	-19	-29.23%
HATE INC (NOT NOTIFIABLE CRIME	11	5	6	120.00%
MALICIOUS / NUISANCE COMMS	222	312	-90	-28.85%
NEIGHBOURS	574	647	-73	-11.28%
NOISE	139	204	-65	-31.86%
PROSTITUTION RELATED ACTIVITY	11	8	3	37.50%
ROWDY OR INCONSIDERATE BEHAV	2196	2293	-97	-4.23%
TRESPASS	39	26	13	50.00%
VEHICLE NUIS & INAPPROP VEH US	657	831	-174	-20.94%
Sum:	4006	4471	-465	-10.40%

ASB

■ ASB Current 12 months ■ ASB Previous 12 months



ASB Reports by CSP Sector and Ward

Kettering Town ASB

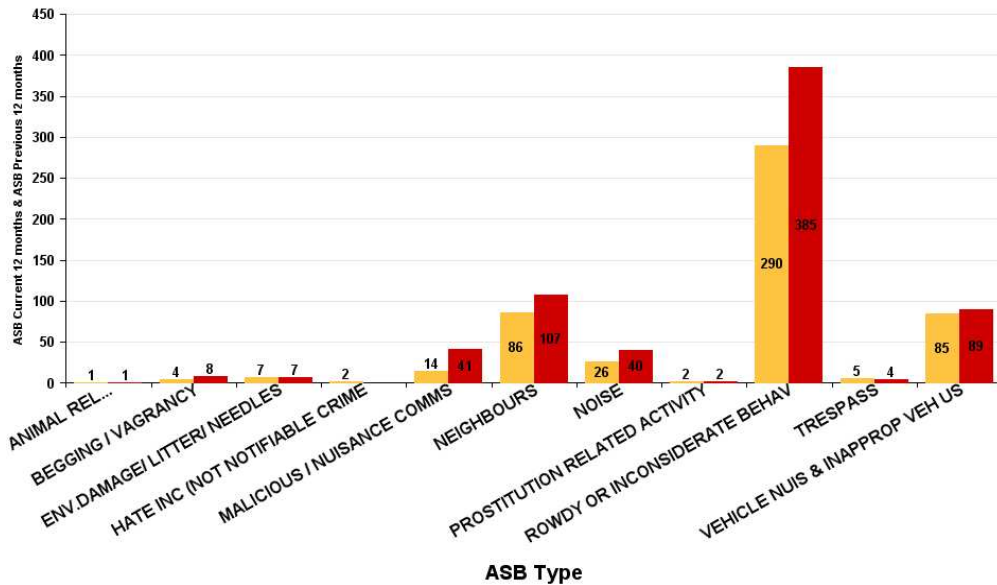
KETTERING TOWN

All Saints

ASB Type	Current 12 Months 2016-11 2017-10	Previous 12 Months 2015-11 2016-10	+/- Crime	% Change
ANIMAL RELATED INC ANTI-SOCIAL	1	1	0	0.00%
BEGGING / VAGRANCY	4	8	-4	-50.00%
ENV.DAMAGE/ LITTER/ NEEDLES	7	7	0	0.00%
HATE INC (NOT NOTIFIABLE CRIME)	2		2	-100.00%
MALICIOUS / NUISANCE COMMS	14	41	-27	-65.85%
NEIGHBOURS	86	107	-21	-19.63%
NOISE	26	40	-14	-35.00%
PROSTITUTION RELATED ACTIVITY	2	2	0	0.00%
ROWDY OR INCONSIDERATE BEHAV	290	385	-95	-24.68%
TRESPASS	5	4	1	25.00%
VEHICLE NUIS & INAPPROP VEH US	85	89	-4	-4.49%
Sum:	522	684	-162	-23.68%

ASB

■ ASB Current 12 months ■ ASB Previous 12 months

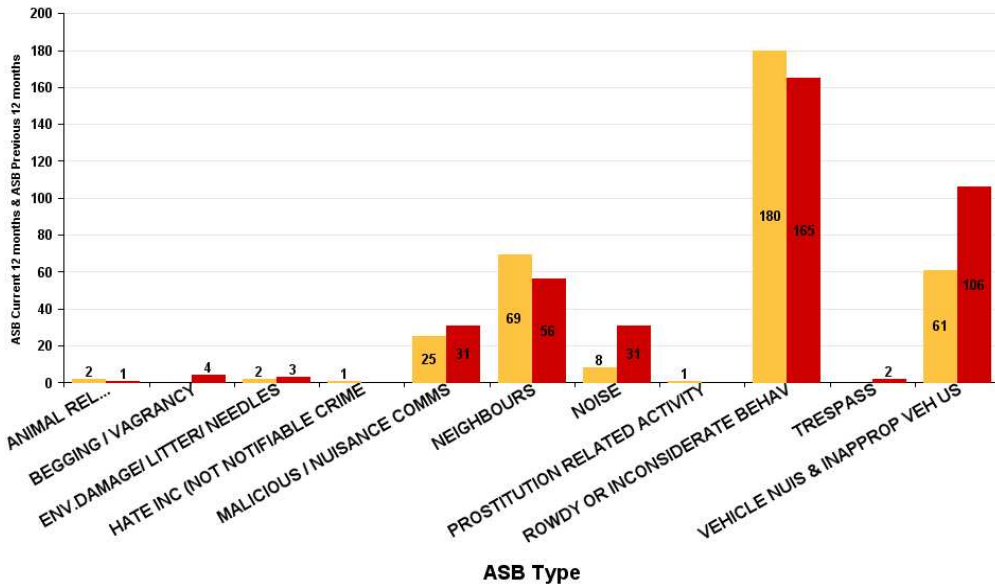


Avondale Grange

ASB Type	Current 12 Months 2016-11 2017-10	Previous 12 Months 2015-11 2016-10	+/- Crime	% Change
ANIMAL RELATED INC ANTI-SOCIAL	2	1	1	100.00%
BEGGING / VAGRANCY		4	-4	-100.00%
ENV.DAMAGE/ LITTER/ NEEDLES	2	3	-1	-33.33%
HATE INC (NOT NOTIFIABLE CRIME)	1		1	-100.00%
MALICIOUS / NUISANCE COMMS	25	31	-6	-19.35%
NEIGHBOURS	69	56	13	23.21%
NOISE	8	31	-23	-74.19%
PROSTITUTION RELATED ACTIVITY	1		1	-100.00%
ROWDY OR INCONSIDERATE BEHAV	180	165	15	9.09%
TRESPASS		2	-2	-100.00%
VEHICLE NUIS & INAPPROP VEH US	61	106	-45	-42.45%
Sum:	349	399	-50	-12.53%

ASB

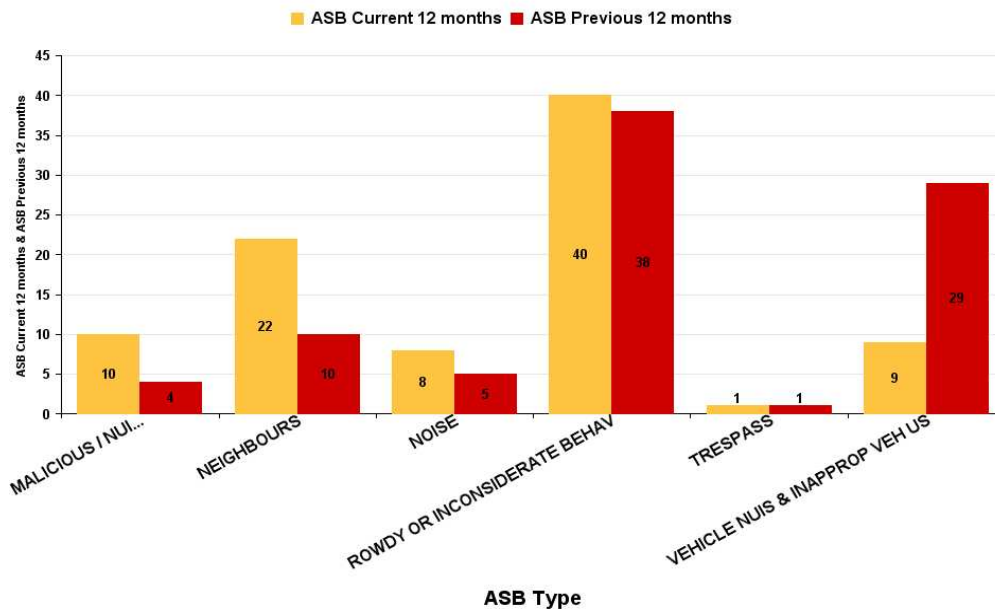
■ ASB Current 12 months ■ ASB Previous 12 months



Brambleside

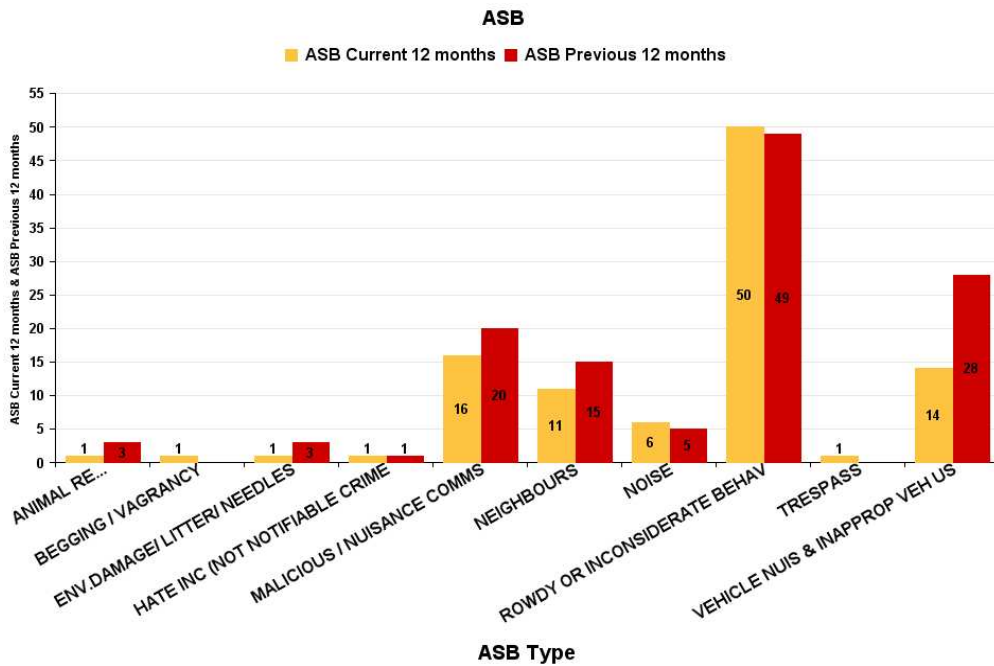
ASB Type	Current 12 Months 2016-11 2017-10	Previous 12 Months 2015-11 2016-10	+/- Crime	% Change
MALICIOUS / NUISANCE COMMS	10	4	6	150.00%
NEIGHBOURS	22	10	12	120.00%
NOISE	8	5	3	60.00%
ROWDY OR INCONSIDERATE BEHAV	40	38	2	5.26%
TRESPASS	1	1	0	0.00%
VEHICLE NUIS & INAPPROP VEH US	9	29	-20	-68.97%
Sum:	90	87	3	3.45%

ASB



Ise Lodge

ASB Type	Current 12 Months 2016-11 2017-10	Previous 12 Months 2015-11 2016-10	+/- Crime	% Change
ANIMAL RELATED INC ANTI-SOCIAL	1	3	-2	-66.67%
BEGGING / VAGRANCY	1		1	-100.00%
ENV.DAMAGE/ LITTER/ NEEDLES	1	3	-2	-66.67%
HATE INC (NOT NOTIFIABLE CRIME	1	1	0	0.00%
MALICIOUS / NUISANCE COMMS	16	20	-4	-20.00%
NEIGHBOURS	11	15	-4	-26.67%
NOISE	6	5	1	20.00%
ROWDY OR INCONSIDERATE BEHAV	50	49	1	2.04%
TRESPASS	1		1	-100.00%
VEHICLE NUIS & INAPPROP VEH US	14	28	-14	-50.00%
Sum:	102	124	-22	-17.74%

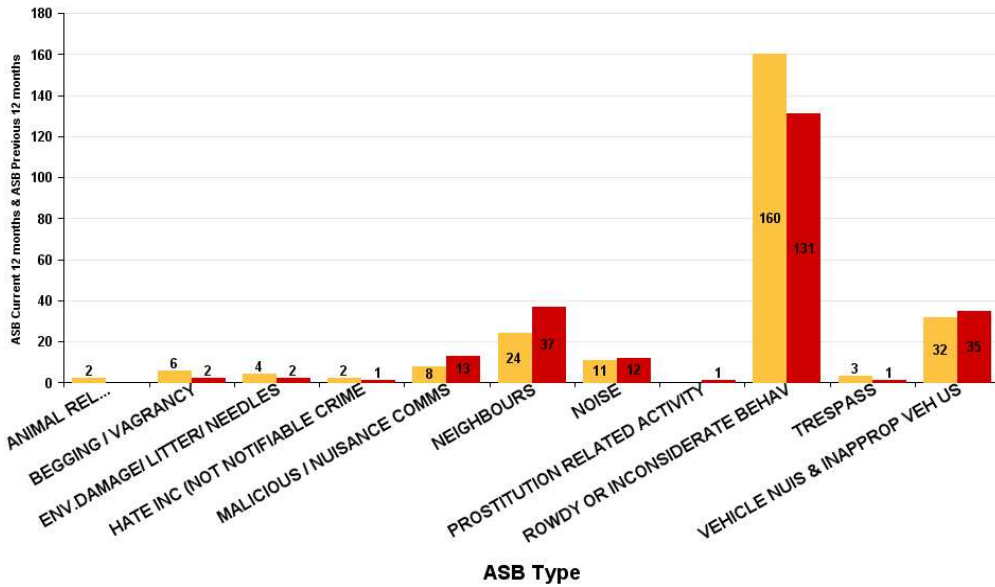


Northfield

ASB Type	Current 12 Months 2016-11 2017-10	Previous 12 Months 2015-11 2016-10	+/- Crime	% Change
ANIMAL RELATED INC ANTI-SOCIAL	2		2	-100.00%
BEGGING / VAGRANCY	6	2	4	200.00%
ENV.DAMAGE/ LITTER/ NEEDLES	4	2	2	100.00%
HATE INC (NOT NOTIFIABLE CRIME)	2	1	1	100.00%
MALICIOUS / NUISANCE COMMS	8	13	-5	-38.46%
NEIGHBOURS	24	37	-13	-35.14%
NOISE	11	12	-1	-8.33%
PROSTITUTION RELATED ACTIVITY		1	-1	-100.00%
ROWDY OR INCONSIDERATE BEHAV	160	131	29	22.14%
TRESPASS	3	1	2	200.00%
VEHICLE NUIS & INAPPROP VEH US	32	35	-3	-8.57%
Sum:	252	235	17	7.23%

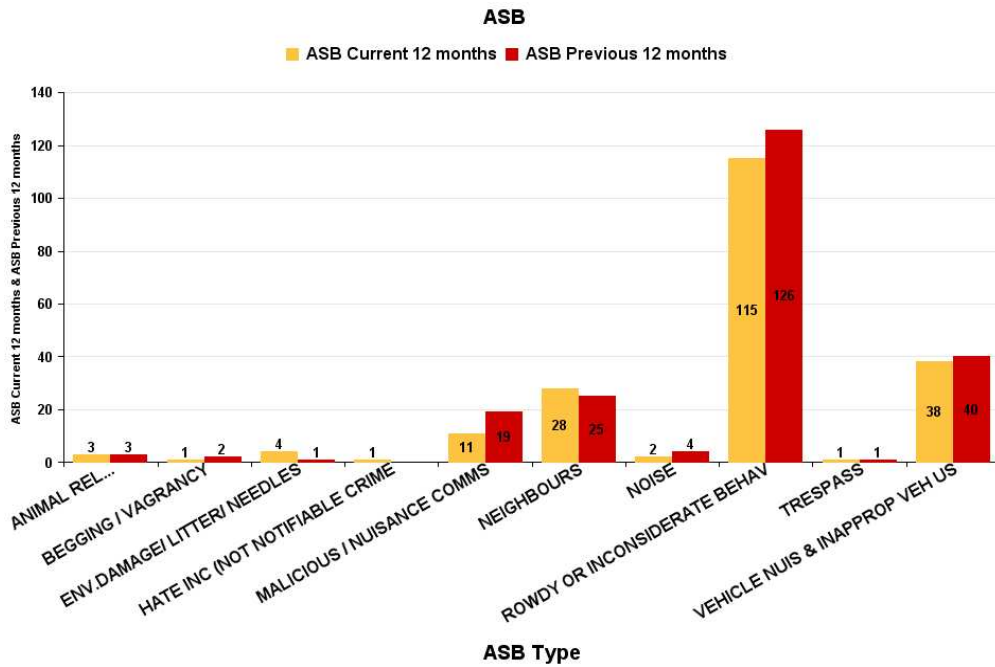
ASB

■ ASB Current 12 months ■ ASB Previous 12 months



Pipers Hill

ASB Type	Current 12 Months 2016-11 2017-10	Previous 12 Months 2015-11 2016-10	+/- Crime	% Change
ANIMAL RELATED INC ANTI-SOCIAL	3	3	0	0.00%
BEGGING / VAGRANCY	1	2	-1	-50.00%
ENV.DAMAGE/ LITTER/ NEEDLES	4	1	3	300.00%
HATE INC (NOT NOTIFIABLE CRIME)	1		1	-100.00%
MALICIOUS / NUISANCE COMMS	11	19	-8	-42.11%
NEIGHBOURS	28	25	3	12.00%
NOISE	2	4	-2	-50.00%
ROWDY OR INCONSIDERATE BEHAV	115	126	-11	-8.73%
TRESPASS	1	1	0	0.00%
VEHICLE NUIS & INAPPROP VEH US	38	40	-2	-5.00%
Sum:	204	221	-17	-7.69%

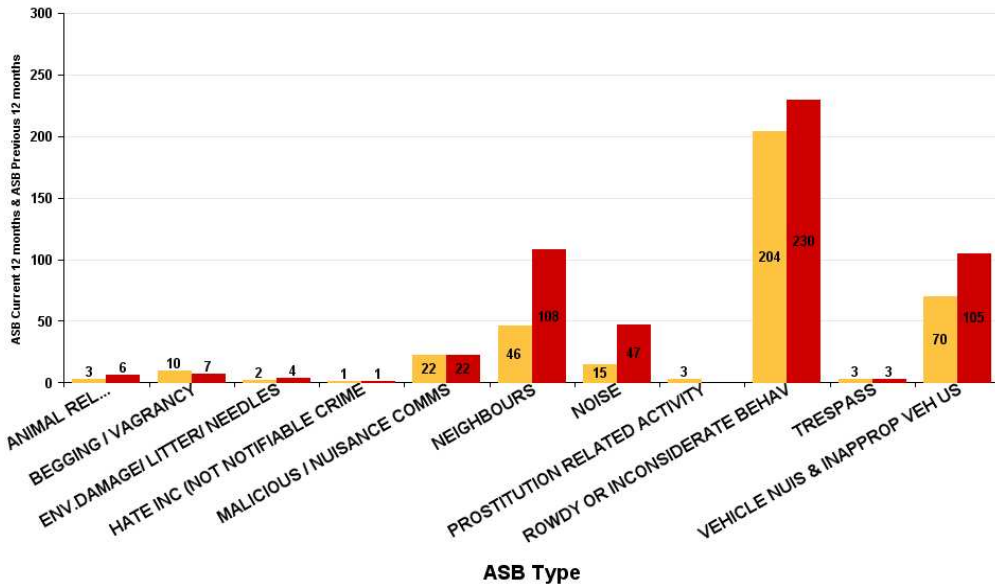


St Michaels and Wicksteed

ASB Type	Current 12 Months 2016-11 2017-10	Previous 12 Months 2015-11 2016-10	+/- Crime	% Change
ANIMAL RELATED INC ANTI-SOCIAL	3	6	-3	-50.00%
BEGGING / VAGRANCY	10	7	3	42.86%
ENV.DAMAGE/ LITTER/ NEEDLES	2	4	-2	-50.00%
HATE INC (NOT NOTIFIABLE CRIME)	1	1	0	0.00%
MALICIOUS / NUISANCE COMMS	22	22	0	0.00%
NEIGHBOURS	46	108	-62	-57.41%
NOISE	15	47	-32	-68.09%
PROSTITUTION RELATED ACTIVITY	3		3	-100.00%
ROWDY OR INCONSIDERATE BEHAV	204	230	-26	-11.30%
TRESPASS	3	3	0	0.00%
VEHICLE NUIS & INAPPROP VEH US	70	105	-35	-33.33%
Sum:	379	533	-154	-28.89%

ASB

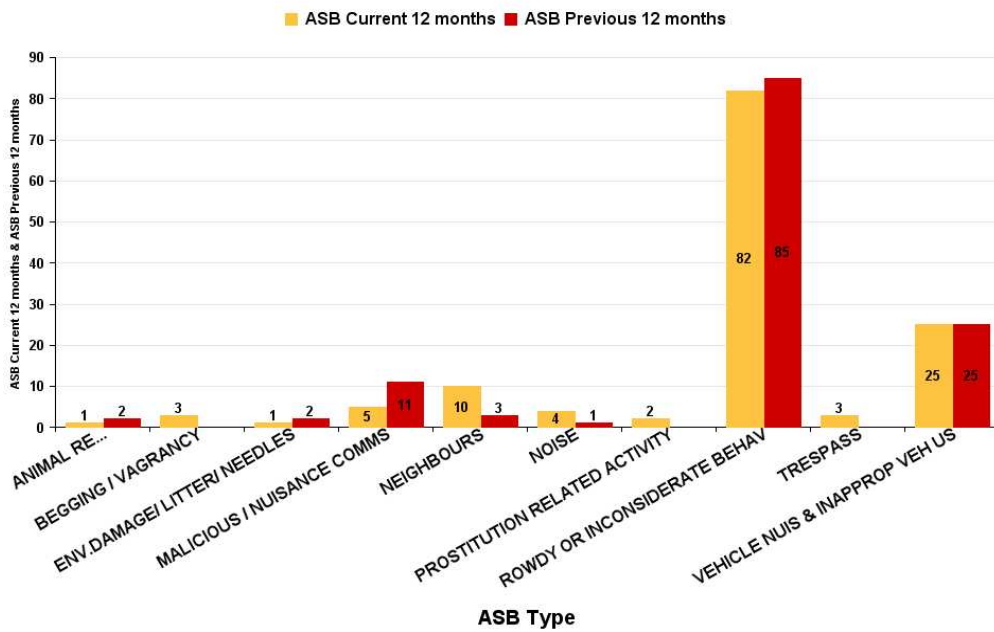
■ ASB Current 12 months ■ ASB Previous 12 months



St Peters

ASB Type	Current 12 Months 2016-11 2017-10	Previous 12 Months 2015-11 2016-10	+/- Crime	% Change
ANIMAL RELATED INC ANTI-SOCIAL	1	2	-1	-50.00%
BEGGING / VAGRANCY	3		3	-100.00%
ENV.DAMAGE/ LITTER/ NEEDLES	1	2	-1	-50.00%
MALICIOUS / NUISANCE COMMS	5	11	-6	-54.55%
NEIGHBOURS	10	3	7	233.33%
NOISE	4	1	3	300.00%
PROSTITUTION RELATED ACTIVITY	2		2	-100.00%
ROWDY OR INCONSIDERATE BEHAV	82	85	-3	-3.53%
TRESPASS	3		3	-100.00%
VEHICLE NUIS & INAPPROP VEH US	25	25	0	0.00%
Sum:	136	129	7	5.43%

ASB



ASB Type	Current 12 Months 2016-11 2017-10	Previous 12 Months 2015-11 2016-10	+/- Crime	% Change
ANIMAL RELATED INC ANTI-SOCIAL	2	5	-3	-60.00%
BEGGING / VAGRANCY	43	19	24	126.32%
ENV.DAMAGE/ LITTER/ NEEDLES	8	21	-13	-61.90%
HATE INC (NOT NOTIFIABLE CRIME)	2	1	1	100.00%
MALICIOUS / NUISANCE COMMS	26	32	-6	-18.75%
NEIGHBOURS	88	83	5	6.02%
NOISE	37	26	11	42.31%
PROSTITUTION RELATED ACTIVITY	1	3	-2	-66.67%
ROWDY OR INCONSIDERATE BEHAV	582	541	41	7.58%
TRESPASS	11	3	8	266.67%
VEHICLE NUIS & INAPPROP VEH US	65	81	-16	-19.75%
Sum:	865	815	50	6.13%

ASB

■ ASB Current 12 months ■ ASB Previous 12 months

