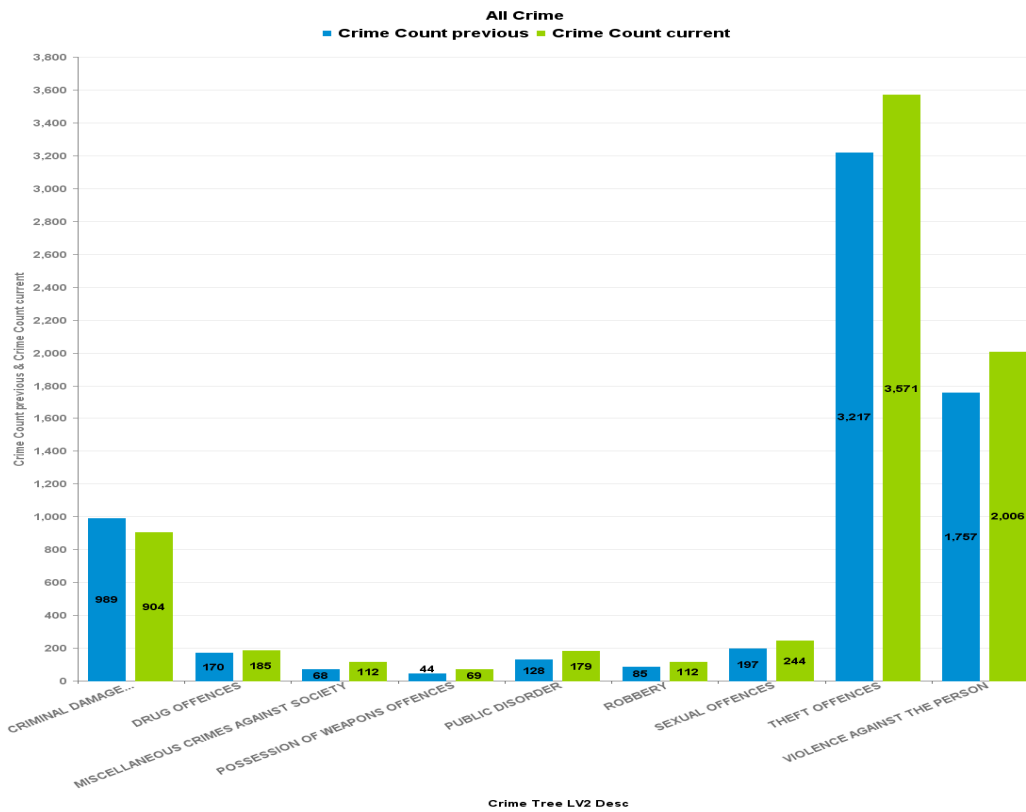


Crime Reports by CSP Sector and Ward

KETTERING BOROUGH

Crime Group	Current 12 Months 2016-08 2017-07	Previous 12 Months 2015-08 2016-07	+/- Crime	% Change	Number of resolved Crimes	Resolved Rate (past 12mths)
CRIMINAL DAMAGE & ARSON	904	989	-85	-8.59%	119	13.16%
DRUG OFFENCES	185	170	15	8.82%	166	89.73%
MISCELLANEOUS CRIMES AGAINST SOCIETY	112	68	44	64.71%	33	29.46%
POSSESSION OF WEAPONS OFFENCES	69	44	25	56.82%	42	60.87%
PUBLIC DISORDER	179	128	51	39.84%	63	35.20%
ROBBERY	112	85	27	31.76%	30	26.79%
SEXUAL OFFENCES	244	197	47	23.86%	25	10.25%
THEFT OFFENCES	3571	3217	354	11.00%	394	11.03%
VIOLENCE AGAINST THE PERSON	2006	1757	249	14.17%	401	19.99%

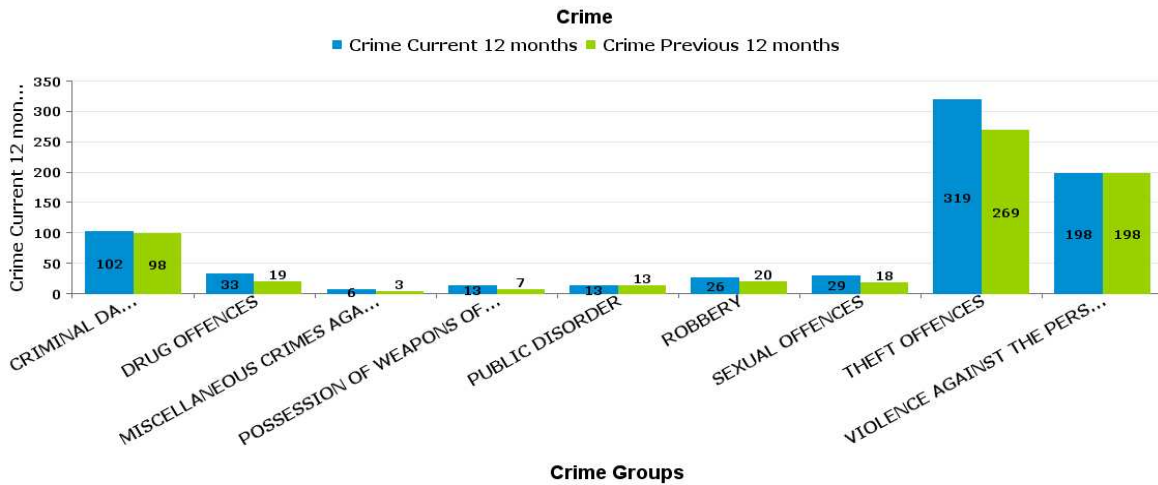


Crime Reports by CSP Sector and Ward

KETTERING TOWN

ALL SAINTS

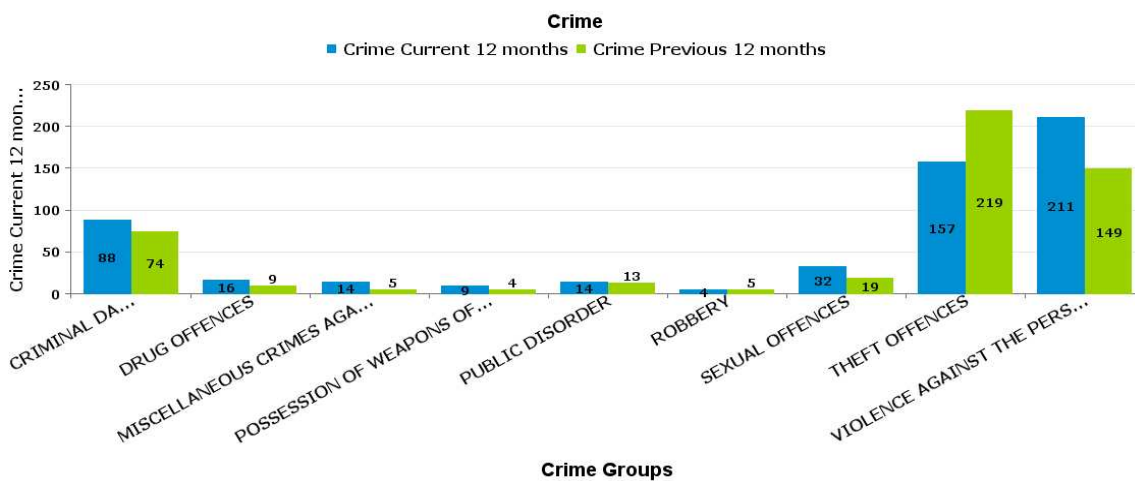
Crime Group	Current 12 Months 2016-08 2017-07	Previous 12 Months 2015-08 2016-07	+/- Crime	% Change	Number of resolved Crimes	Resolved Rate (past 12mths)
CRIMINAL DAMAGE & ARSON	102	98	4	4.08%	19	18.63%
DRUG OFFENCES	33	19	14	73.68%	30	90.91%
MISCELLANEOUS CRIMES AGAINST SOCIETY	6	3	3	100.00%	3	50.00%
POSSESSION OF WEAPONS OFFENCES	13	7	6	85.71%	7	53.85%
PUBLIC DISORDER	13	13	0	0.00%	4	30.77%
ROBBERY	26	20	6	30.00%	8	30.77%
SEXUAL OFFENCES	29	18	11	61.11%	4	13.79%
THEFT OFFENCES	319	269	50	18.59%	43	13.48%
VIOLENCE AGAINST THE PERSON	198	198	0	0.00%	45	22.73%



KETTERING TOWN

AVONDALE GRANGE

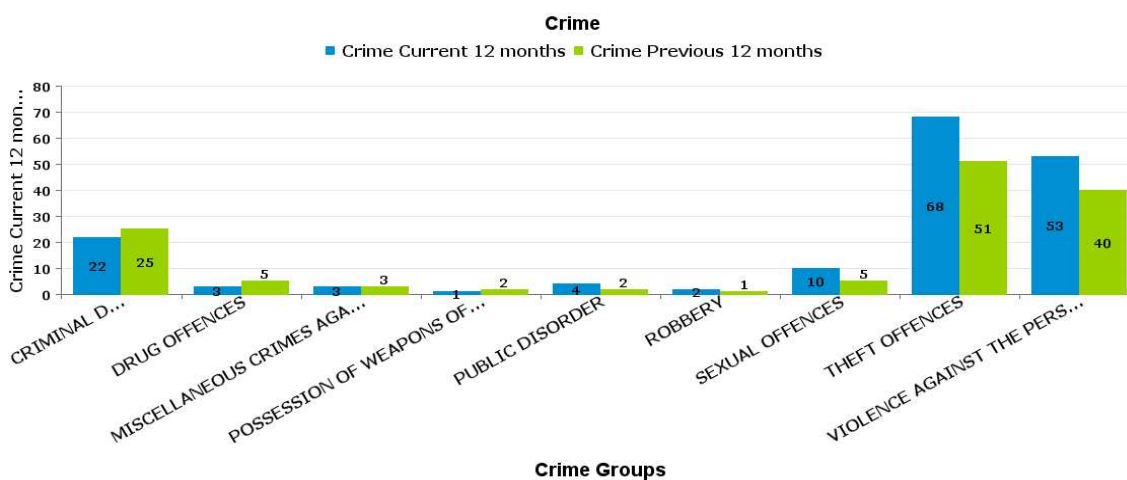
Crime Group	Current 12 Months 2016-08 2017-07	Previous 12 Months 2015-08 2016-07	+/- Crime	% Change	Number of resolved Crimes	Resolved Rate (past 12mths)
CRIMINAL DAMAGE & ARSON	88	74	14	18.92%	11	12.50%
DRUG OFFENCES	16	9	7	77.78%	9	56.25%
MISCELLANEOUS CRIMES AGAINST SOCIETY	14	5	9	180.00%	1	7.14%
POSSESSION OF WEAPONS OFFENCES	9	4	5	125.00%	4	44.44%
PUBLIC DISORDER	14	13	1	7.69%	5	35.71%
ROBBERY	4	5	-1	-20.00%	1	25.00%
SEXUAL OFFENCES	32	19	13	68.42%	1	3.13%
THEFT OFFENCES	157	219	-62	-28.31%	27	17.20%
VIOLENCE AGAINST THE PERSON	211	149	62	41.61%	33	15.64%



KETTERING TOWN

BRAMBLESIDE

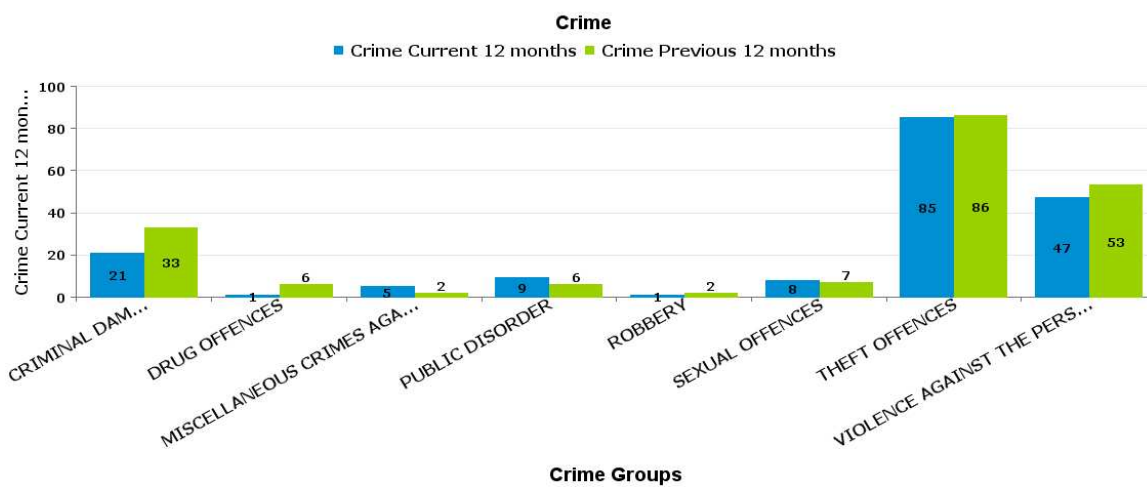
Crime Group	Current 12 Months 2016-08 2017-07	Previous 12 Months 2015-08 2016-07	+/- Crime	% Change	Number of resolved Crimes	Resolved Rate (past 12mths)
CRIMINAL DAMAGE & ARSON	22	25	-3	-12.00%	7	31.82%
DRUG OFFENCES	3	5	-2	-40.00%	3	100.00%
MISCELLANEOUS CRIMES AGAINST SOCIETY	3	3	0	0.00%	1	33.33%
POSSESSION OF WEAPONS OFFENCES	1	2	-1	-50.00%	2	200.00%
PUBLIC DISORDER	4	2	2	100.00%	1	25.00%
ROBBERY	2	1	1	100.00%	1	50.00%
SEXUAL OFFENCES	10	5	5	100.00%	1	10.00%
THEFT OFFENCES	68	51	17	33.33%	1	1.47%
VIOLENCE AGAINST THE PERSON	53	40	13	32.50%	14	26.42%



KETTERING TOWN

ISE LODGE

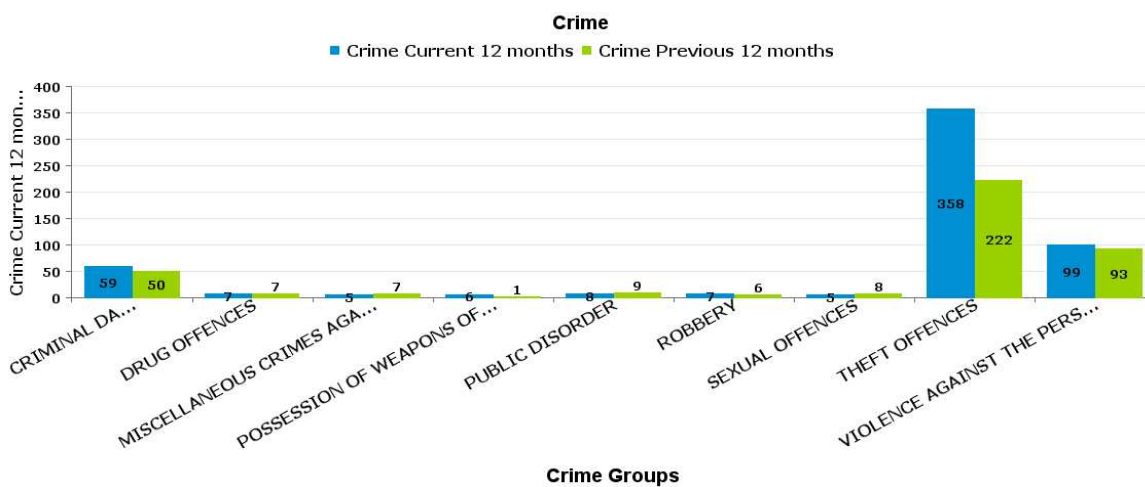
Crime Group	Current 12 Months 2016-08 2017-07	Previous 12 Months 2015-08 2016-07	+/- Crime	% Change	Number of resolved Crimes	Resolved Rate (past 12mths)
CRIMINAL DAMAGE & ARSON	21	33	-12	-36.36%	4	19.05%
DRUG OFFENCES	1	6	-5	-83.33%	3	300.00%
MISCELLANEOUS CRIMES AGAINST SOCIETY	5	2	3	150.00%		
PUBLIC DISORDER	9	6	3	50.00%	2	22.22%
ROBBERY	1	2	-1	-50.00%	1	100.00%
SEXUAL OFFENCES	8	7	1	14.29%	2	25.00%
THEFT OFFENCES	85	86	-1	-1.16%	10	11.76%
VIOLENCE AGAINST THE PERSON	47	53	-6	-11.32%	10	21.28%



KETTERING TOWN

NORTHFIELD

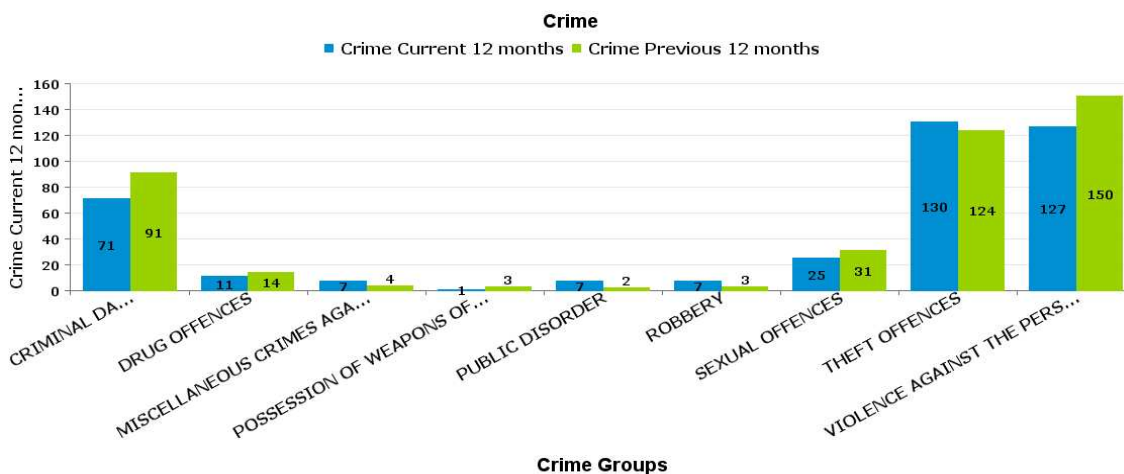
Crime Group	Current 12 Months 2016-08 2017-07	Previous 12 Months 2015-08 2016-07	+/- Crime	% Change	Number of resolved Crimes	Resolved Rate (past 12mths)
CRIMINAL DAMAGE & ARSON	59	50	9	18.00%	4	6.78%
DRUG OFFENCES	7	7	0	0.00%	7	100.00%
MISCELLANEOUS CRIMES AGAINST SOCIETY	5	7	-2	-28.57%	1	20.00%
POSSESSION OF WEAPONS OFFENCES	6	1	5	500.00%	4	66.67%
PUBLIC DISORDER	8	9	-1	-11.11%	1	12.50%
ROBBERY	7	6	1	16.67%	2	28.57%
SEXUAL OFFENCES	5	8	-3	-37.50%		
THEFT OFFENCES	358	222	136	61.26%	55	15.36%
VIOLENCE AGAINST THE PERSON	99	93	6	6.45%	19	19.19%



KETTERING TOWN

PIPERS HILL

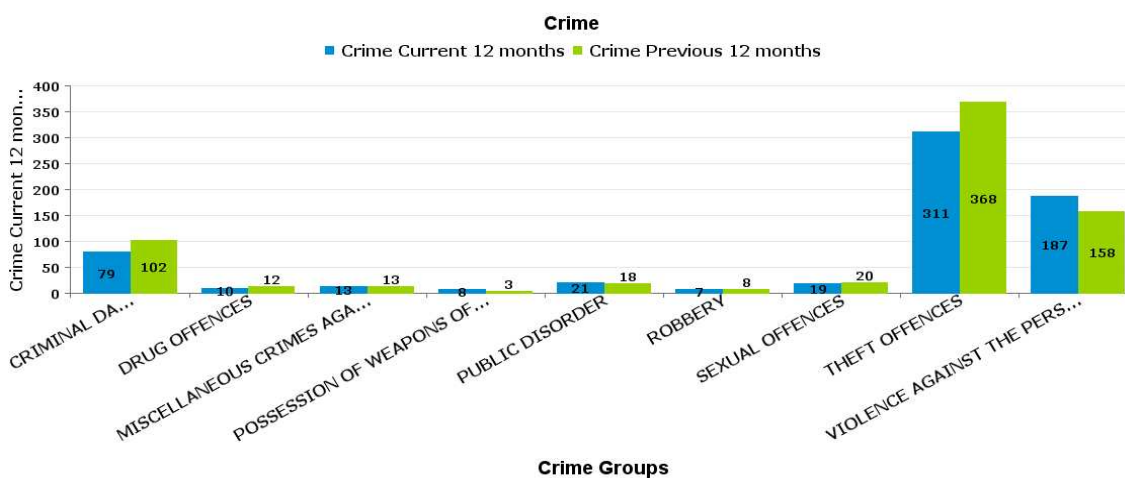
Crime Group	Current 12 Months 2016-08 2017-07	Previous 12 Months 2015-08 2016-07	+/- Crime	% Change	Number of resolved Crimes	Resolved Rate (past 12mths)
CRIMINAL DAMAGE & ARSON	71	91	-20	-21.98%	7	9.86%
DRUG OFFENCES	11	14	-3	-21.43%	9	81.82%
MISCELLANEOUS CRIMES AGAINST SOCIETY	7	4	3	75.00%	3	42.86%
POSSESSION OF WEAPONS OFFENCES	1	3	-2	-66.67%	1	100.00%
PUBLIC DISORDER	7	2	5	250.00%	2	28.57%
ROBBERY	7	3	4	133.33%		
SEXUAL OFFENCES	25	31	-6	-19.35%	1	4.00%
THEFT OFFENCES	130	124	6	4.84%	6	4.62%
VIOLENCE AGAINST THE PERSON	127	150	-23	-15.33%	22	17.32%



KETTERING TOWN

ST MICHAELS AND WICKSTEED

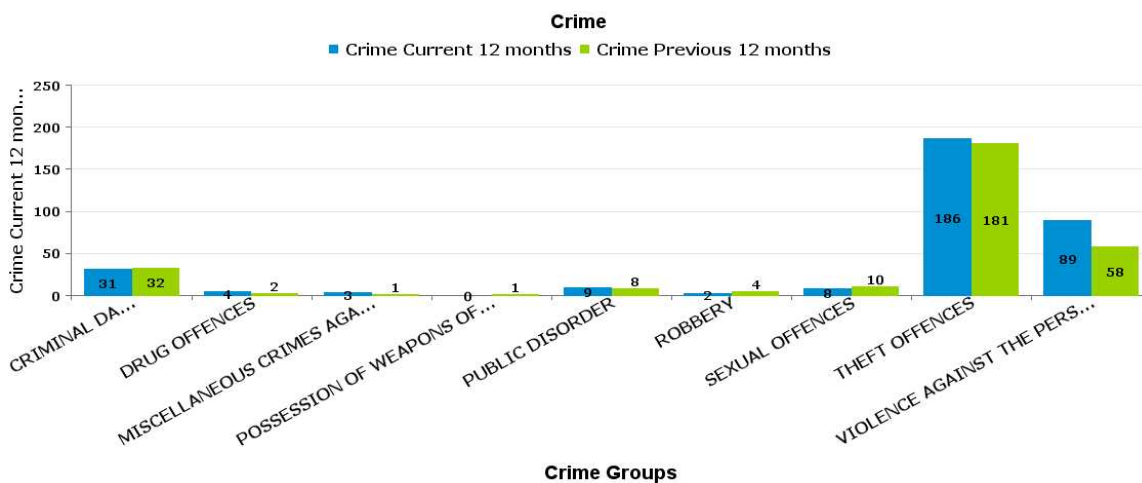
Crime Group	Current 12 Months 2016-08 2017-07	Previous 12 Months 2015-08 2016-07	+/- Crime	% Change	Number of resolved Crimes	Resolved Rate (past 12mths)
CRIMINAL DAMAGE & ARSON	79	102	-23	-22.55%	7	8.86%
DRUG OFFENCES	10	12	-2	-16.67%	14	140.00%
MISCELLANEOUS CRIMES AGAINST SOCIETY	13	13	0	0.00%	4	30.77%
POSSESSION OF WEAPONS OFFENCES	8	3	5	166.67%	5	62.50%
PUBLIC DISORDER	21	18	3	16.67%	10	47.62%
ROBBERY	7	8	-1	-12.50%	4	57.14%
SEXUAL OFFENCES	19	20	-1	-5.00%	4	21.05%
THEFT OFFENCES	311	368	-57	-15.49%	19	6.11%
VIOLENCE AGAINST THE PERSON	187	158	29	18.35%	26	13.90%



KETTERING TOWN

ST PETERS

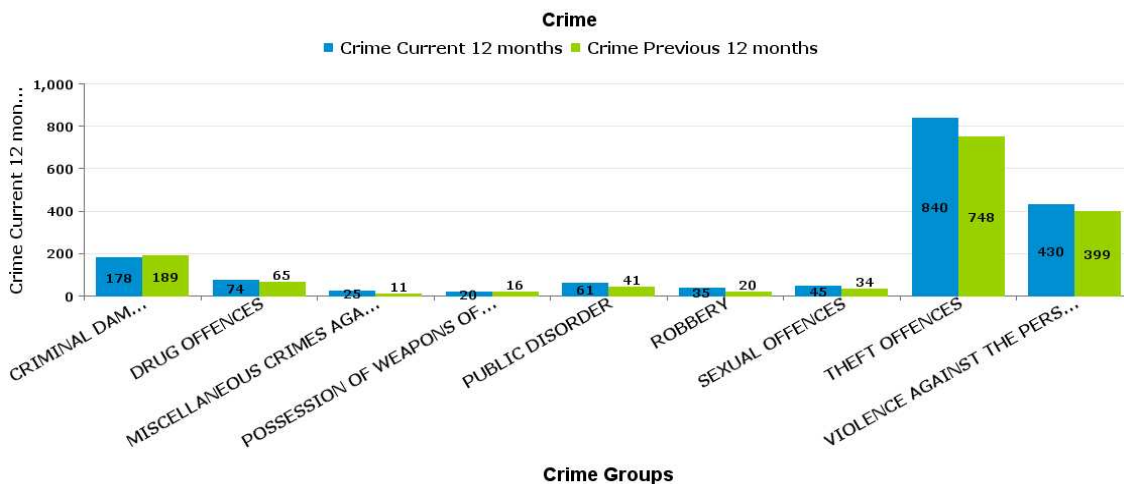
Crime Group	Current 12 Months 2016-08 2017-07	Previous 12 Months 2015-08 2016-07	+/- Crime	% Change	Number of resolved Crimes	Resolved Rate (past 12mths)
CRIMINAL DAMAGE & ARSON	31	32	-1	-3.13%	7	22.58%
DRUG OFFENCES	4	2	2	100.00%	3	75.00%
MISCELLANEOUS CRIMES AGAINST SOCIETY	3	1	2	200.00%	3	100.00%
POSSESSION OF WEAPONS OFFENCES	0	1	-1	-100.00%		
PUBLIC DISORDER	9	8	1	12.50%	1	11.11%
ROBBERY	2	4	-2	-50.00%		
SEXUAL OFFENCES	8	10	-2	-20.00%	3	37.50%
THEFT OFFENCES	186	181	5	2.76%	12	6.45%
VIOLENCE AGAINST THE PERSON	89	58	31	53.45%	28	31.46%



KETTERING TOWN

WILLIAM KNIBB

Crime Group	Current 12 Months 2016-08 2017-07	Previous 12 Months 2015-08 2016-07	+/- Crime	% Change	Number of resolved Crimes	Resolved Rate (past 12mths)
CRIMINAL DAMAGE & ARSON	178	189	-11	-5.82%	34	19.10%
DRUG OFFENCES	74	65	9	13.85%	67	90.54%
MISCELLANEOUS CRIMES AGAINST SOCIETY	25	11	14	127.27%	10	40.00%
POSSESSION OF WEAPONS OFFENCES	20	16	4	25.00%	15	75.00%
PUBLIC DISORDER	61	41	20	48.78%	30	49.18%
ROBBERY	35	20	15	75.00%	10	28.57%
SEXUAL OFFENCES	45	34	11	32.35%	3	6.67%
THEFT OFFENCES	840	748	92	12.30%	151	17.98%
VIOLENCE AGAINST THE PERSON	430	399	31	7.77%	97	22.56%



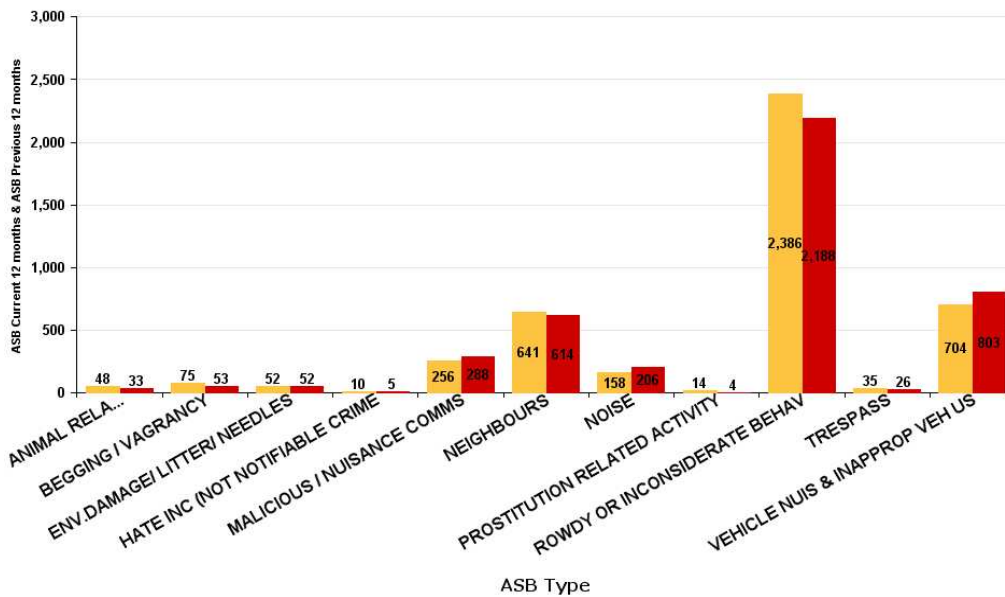
ASB Reports by CSP Sector and Ward

KETTERING BOROUGH ASB

ASB Type	Current 12 Months 2016-08 2017-07	Previous 12 Months 2015-08 2016-07	+/- Crime	% Change
ANIMAL RELATED INC ANTI-SOCIAL	48	33	15	45.45%
BEGGING / VAGRANCY	75	53	22	41.51%
ENV.DAMAGE/ LITTER/ NEEDLES	52	52	0	0.00%
HATE INC (NOT NOTIFIABLE CRIME)	10	5	5	100.00%
MALICIOUS / NUISANCE COMMS	256	288	-32	-11.11%
NEIGHBOURS	641	614	27	4.40%
NOISE	158	206	-48	-23.30%
PROSTITUTION RELATED ACTIVITY	14	4	10	250.00%
ROWDY OR INCONSIDERATE BEHAV	2386	2188	198	9.05%
TRESPASS	35	26	9	34.62%
VEHICLE NUIS & INAPPROP VEH US	704	803	-99	-12.33%
Sum:	4379	4272	107	2.50%

ASB

ASB Current 12 months ASB Previous 12 months



ASB Reports by CSP Sector and Ward

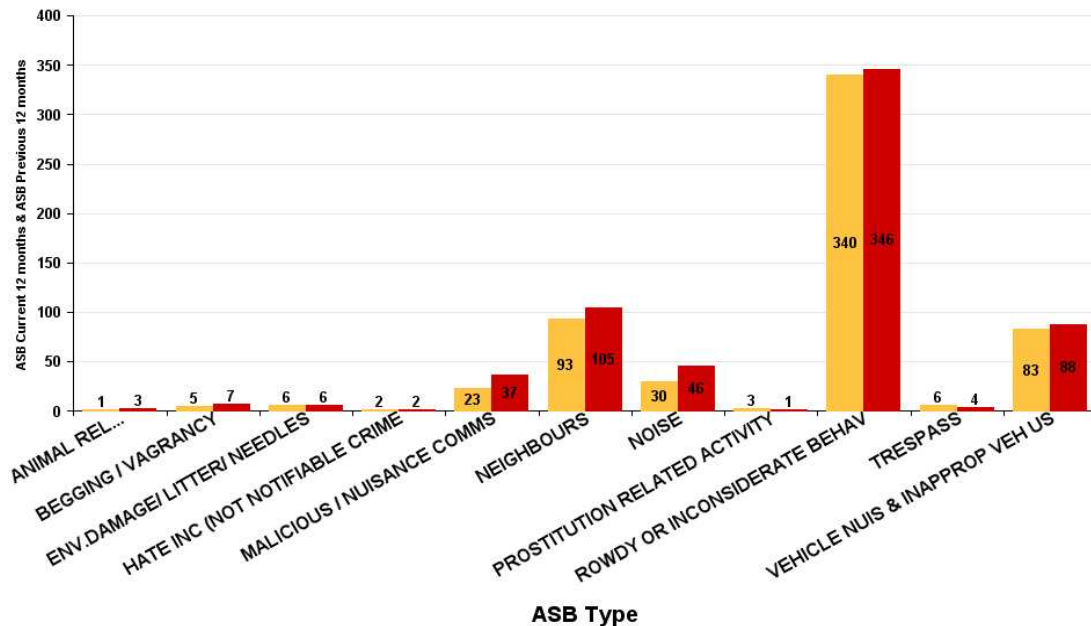
KETTERING TOWN ASB

All Saints

ASB Type	Current 12 Months 2016-08 2017-07	Previous 12 Months 2015-08 2016-07	+/- Crime	% Change
ANIMAL RELATED INC ANTI-SOCIAL	1	3	-2	-66.67%
BEGGING / VAGRANCY	5	7	-2	-28.57%
ENV.DAMAGE/ LITTER/ NEEDLES	6	6	0	0.00%
HATE INC (NOT NOTIFIABLE CRIME)	2	2	0	0.00%
MALICIOUS / NUISANCE COMMS	23	37	-14	-37.84%
NEIGHBOURS	93	105	-12	-11.43%
NOISE	30	46	-16	-34.78%
PROSTITUTION RELATED ACTIVITY	3	1	2	200.00%
ROWDY OR INCONSIDERATE BEHAV	340	346	-6	-1.73%
TRESPASS	6	4	2	50.00%
VEHICLE NUIS & INAPPROP VEH US	83	88	-5	-5.68%
Sum:	592	645	-53	-8.22%

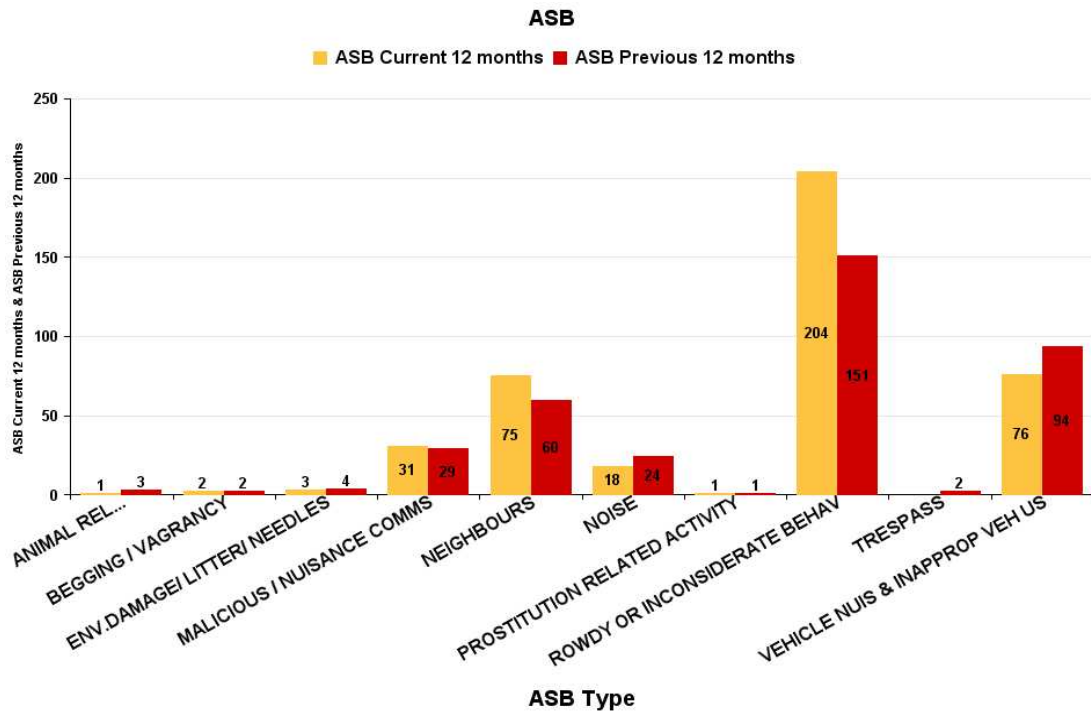
ASB

■ ASB Current 12 months ■ ASB Previous 12 months



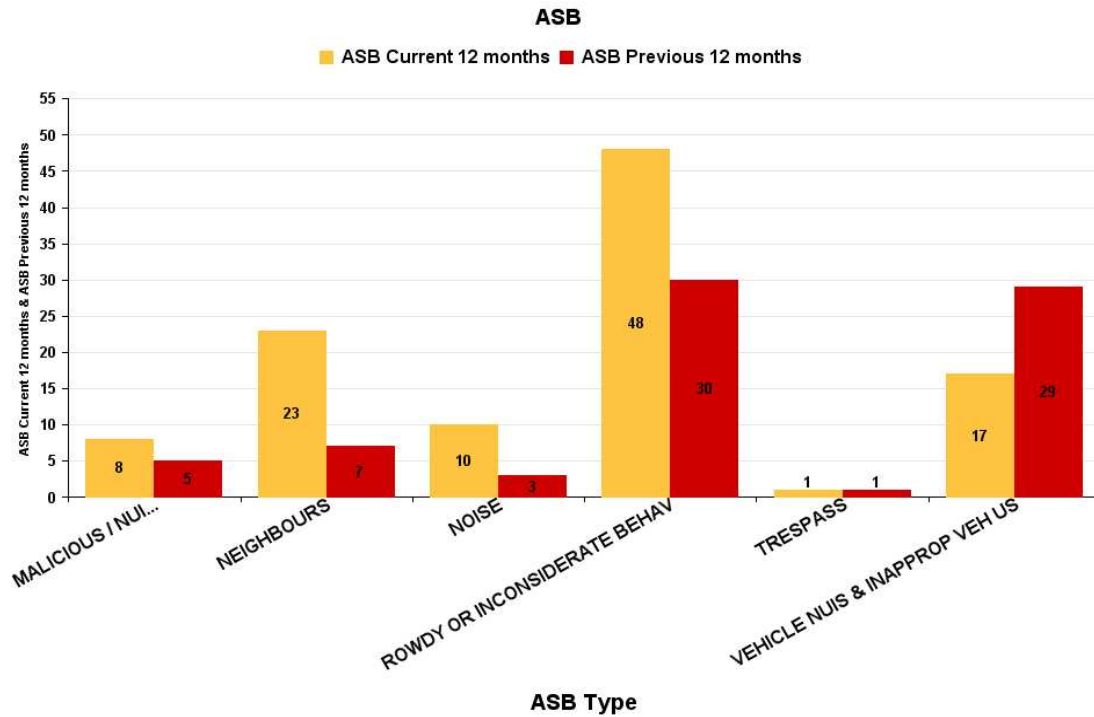
Avondale Grange

ASB Type	Current 12 Months 2016-08 2017-07	Previous 12 Months 2015-08 2016-07	+/- Crime	% Change
ANIMAL RELATED INC ANTI-SOCIAL	1	3	-2	-66.67%
BEGGING / VAGRANCY	2	2	0	0.00%
ENV.DAMAGE/ LITTER/ NEEDLES	3	4	-1	-25.00%
MALICIOUS / NUISANCE COMMS	31	29	2	6.90%
NEIGHBOURS	75	60	15	25.00%
NOISE	18	24	-6	-25.00%
PROSTITUTION RELATED ACTIVITY	1	1	0	0.00%
ROWDY OR INCONSIDERATE BEHAV	204	151	53	35.10%
TRESPASS		2	-2	-100.00%
VEHICLE NUIS & INAPPROP VEH US	76	94	-18	-19.15%
Sum:	411	370	41	11.08%



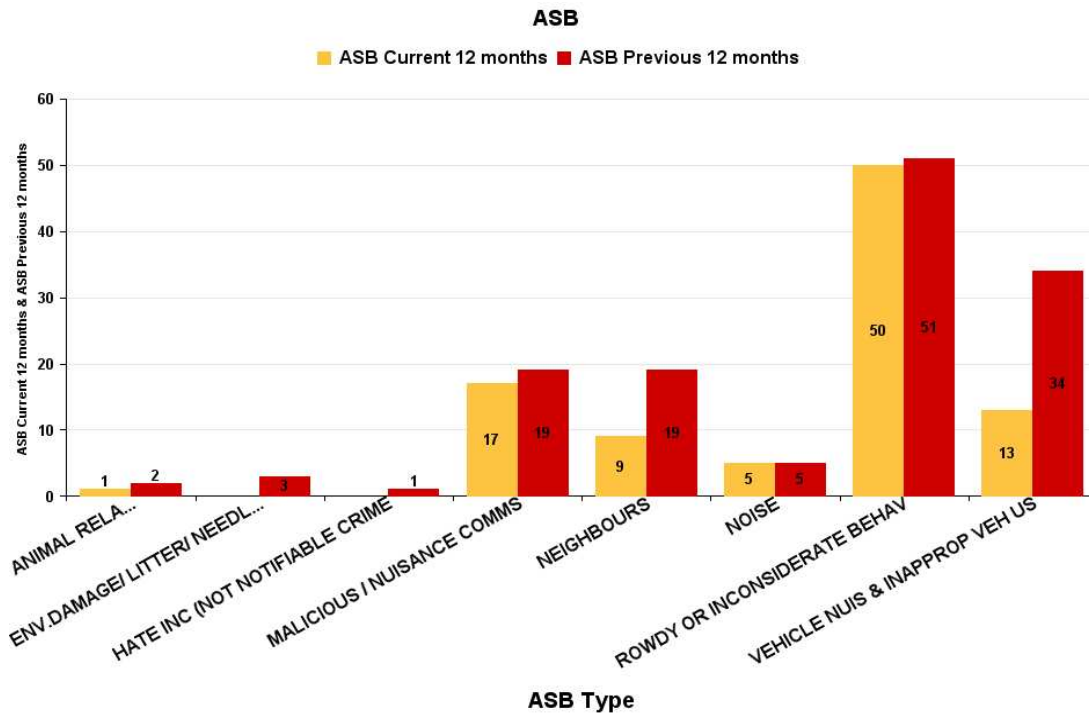
Brambleside

ASB Type	Current 12 Months 2016-08 2017-07	Previous 12 Months 2015-08 2016-07	+/- Crime	% Change
MALICIOUS / NUISANCE COMMS	8	5	3	60.00%
NEIGHBOURS	23	7	16	228.57%
NOISE	10	3	7	233.33%
ROWDY OR INCONSIDERATE BEHAV	48	30	18	60.00%
TRESPASS	1	1	0	0.00%
VEHICLE NUIS & INAPPROP VEH US	17	29	-12	-41.38%
Sum:	107	75	32	42.67%



Ise Lodge

ASB Type	Current 12 Months 2016-08 2017-07	Previous 12 Months 2015-08 2016-07	+/- Crime	% Change
ANIMAL RELATED INC ANTI-SOCIAL	1	2	-1	-50.00%
ENV.DAMAGE/ LITTER/ NEEDLES		3	-3	-100.00%
HATE INC (NOT NOTIFIABLE CRIME		1	-1	-100.00%
MALICIOUS / NUISANCE COMMS	17	19	-2	-10.53%
NEIGHBOURS	9	19	-10	-52.63%
NOISE	5	5	0	0.00%
ROWDY OR INCONSIDERATE BEHAV	50	51	-1	-1.96%
VEHICLE NUIS & INAPPROP VEH US	13	34	-21	-61.76%
Sum:	95	134	-39	-29.10%

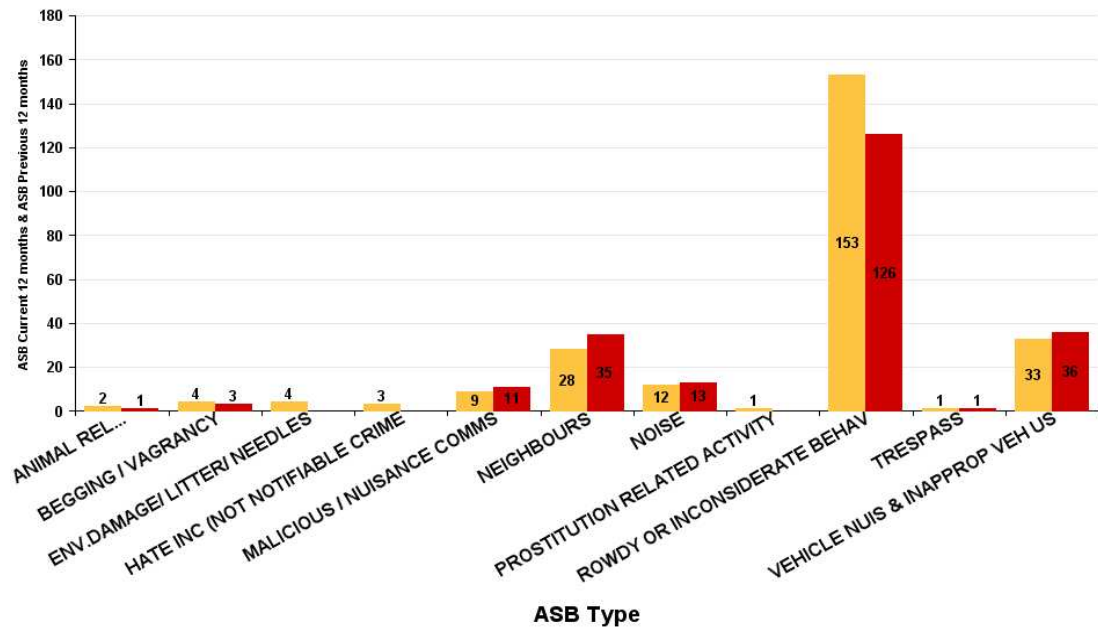


Northfield

ASB Type	Current 12 Months 2016-08 2017-07	Previous 12 Months 2015-08 2016-07	+/- Crime	% Change
ANIMAL RELATED INC ANTI-SOCIAL	2	1	1	100.00%
BEGGING / VAGRANCY	4	3	1	33.33%
ENV.DAMAGE/ LITTER/ NEEDLES	4		4	-100.00%
HATE INC (NOT NOTIFIABLE CRIME)	3		3	-100.00%
MALICIOUS / NUISANCE COMMS	9	11	-2	-18.18%
NEIGHBOURS	28	35	-7	-20.00%
NOISE	12	13	-1	-7.69%
PROSTITUTION RELATED ACTIVITY	1		1	-100.00%
ROWDY OR INCONSIDERATE BEHAV	153	126	27	21.43%
TRESPASS	1	1	0	0.00%
VEHICLE NUIS & INAPPROP VEH US	33	36	-3	-8.33%
Sum:	250	226	24	10.62%

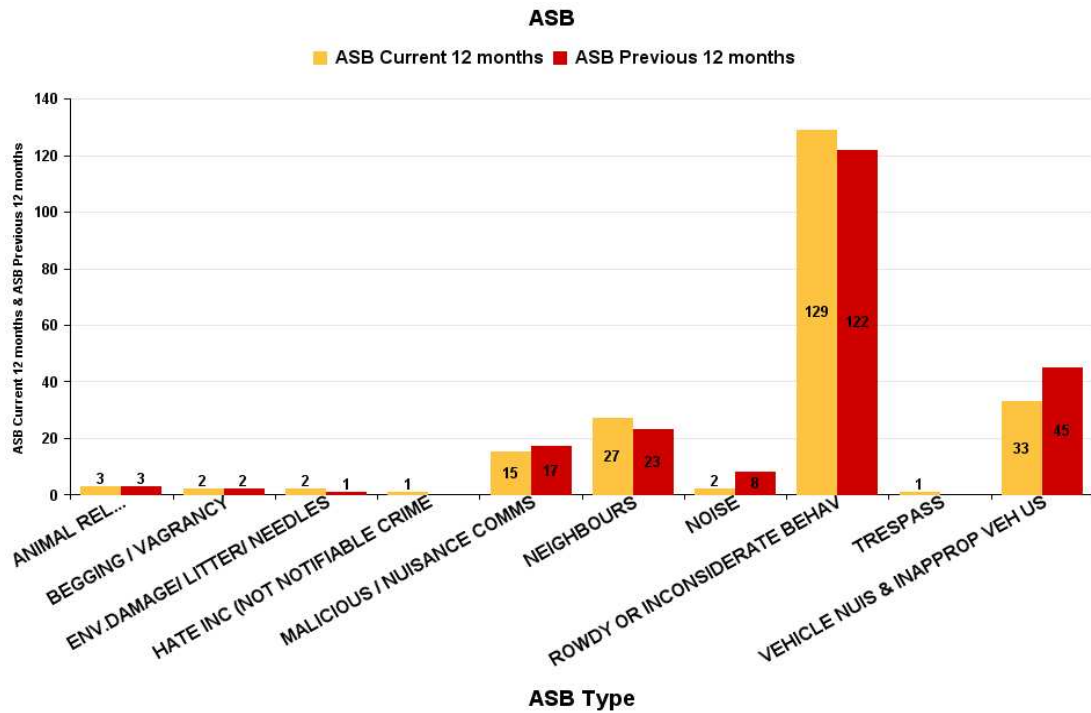
ASB

■ ASB Current 12 months ■ ASB Previous 12 months



Pipers Hill

ASB Type	Current 12 Months 2016-08 2017-07	Previous 12 Months 2015-08 2016-07	+/- Crime	% Change
ANIMAL RELATED INC ANTI-SOCIAL	3	3	0	0.00%
BEGGING / VAGRANCY	2	2	0	0.00%
ENV.DAMAGE/ LITTER/ NEEDLES	2	1	1	100.00%
HATE INC (NOT NOTIFIABLE CRIME	1		1	-100.00%
MALICIOUS / NUISANCE COMMS	15	17	-2	-11.76%
NEIGHBOURS	27	23	4	17.39%
NOISE	2	8	-6	-75.00%
ROWDY OR INCONSIDERATE BEHAV	129	122	7	5.74%
TRESPASS	1		1	-100.00%
VEHICLE NUIS & INAPPROP VEH US	33	45	-12	-26.67%
Sum:	215	221	-6	-2.71%

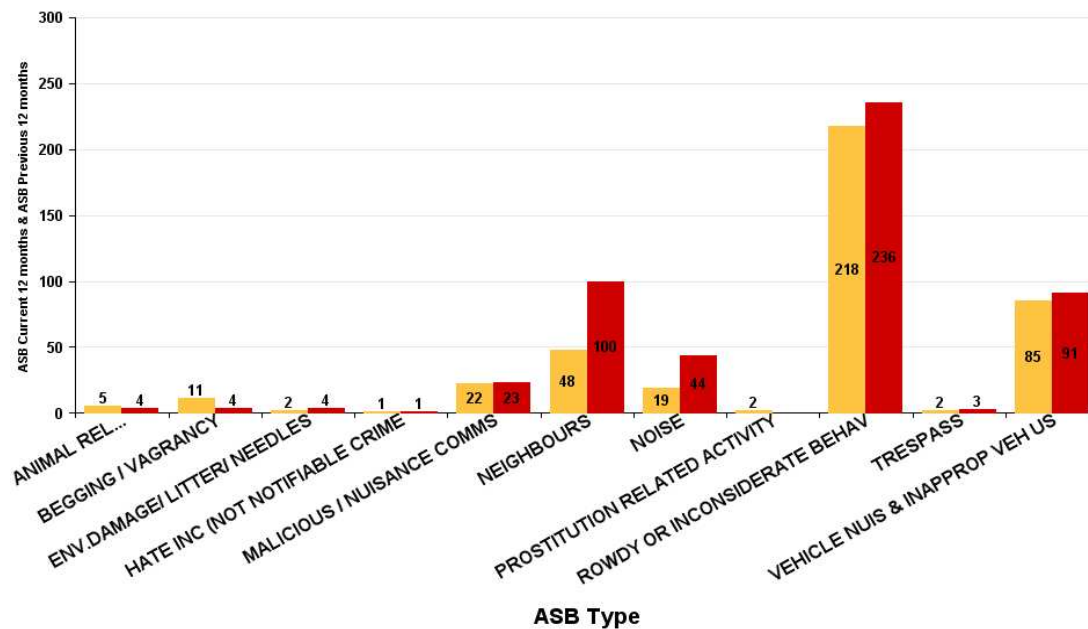


St Michaels and Wicksteed

ASB Type	Current 12 Months 2016-08 2017-07	Previous 12 Months 2015-08 2016-07	+/- Crime	% Change
ANIMAL RELATED INC ANTI-SOCIAL	5	4	1	25.00%
BEGGING / VAGRANCY	11	4	7	175.00%
ENV.DAMAGE/ LITTER/ NEEDLES	2	4	-2	-50.00%
HATE INC (NOT NOTIFIABLE CRIME	1	1	0	0.00%
MALICIOUS / NUISANCE COMMS	22	23	-1	-4.35%
NEIGHBOURS	48	100	-52	-52.00%
NOISE	19	44	-25	-56.82%
PROSTITUTION RELATED ACTIVITY	2		2	-100.00%
ROWDY OR INCONSIDERATE BEHAV	218	236	-18	-7.63%
TRESPASS	2	3	-1	-33.33%
VEHICLE NUIS & INAPPROP VEH US	85	91	-6	-6.59%
Sum:	415	510	-95	-18.63%

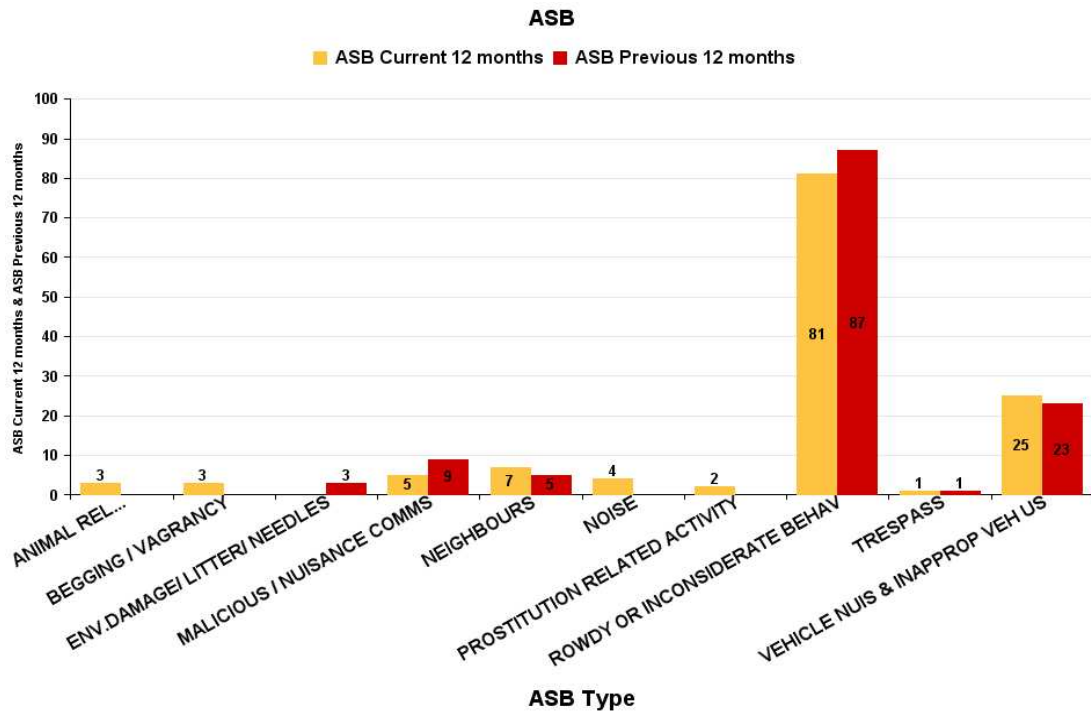
ASB

■ ASB Current 12 months ■ ASB Previous 12 months



St Peters

ASB Type	Current 12 Months 2016-08 2017-07	Previous 12 Months 2015-08 2016-07	+/- Crime	% Change
ANIMAL RELATED INC ANTI-SOCIAL	3		3	-100.00%
BEGGING / VAGRANCY	3		3	-100.00%
ENV.DAMAGE/ LITTER/ NEEDLES		3	-3	-100.00%
MALICIOUS / NUISANCE COMMS	5	9	-4	-44.44%
NEIGHBOURS	7	5	2	40.00%
NOISE	4		4	-100.00%
PROSTITUTION RELATED ACTIVITY	2		2	-100.00%
ROWDY OR INCONSIDERATE BEHAV	81	87	-6	-6.90%
TRESPASS	1	1	0	0.00%
VEHICLE NUIS & INAPPROP VEH US	25	23	2	8.70%
Sum:	131	128	3	2.34%



William Knibb

ASB Type	Current 12 Months 2016-08 2017-07	Previous 12 Months 2015-08 2016-07	+/- Crime	% Change
ANIMAL RELATED INC ANTI-SOCIAL	4	4	0	0.00%
BEGGING / VAGRANCY	45	32	13	40.63%
ENV.DAMAGE/ LITTER/ NEEDLES	16	12	4	33.33%
HATE INC (NOT NOTIFIABLE CRIME	3		3	-100.00%
MALICIOUS / NUISANCE COMMS	30	28	2	7.14%
NEIGHBOURS	116	59	57	96.61%
NOISE	32	28	4	14.29%
PROSTITUTION RELATED ACTIVITY	3	1	2	200.00%
ROWDY OR INCONSIDERATE BEHAV	646	536	110	20.52%
TRESPASS	11	5	6	120.00%
VEHICLE NUIS & INAPPROP VEH US	63	83	-20	-24.10%
Sum:	969	788	181	22.97%

ASB

■ ASB Current 12 months ■ ASB Previous 12 months

