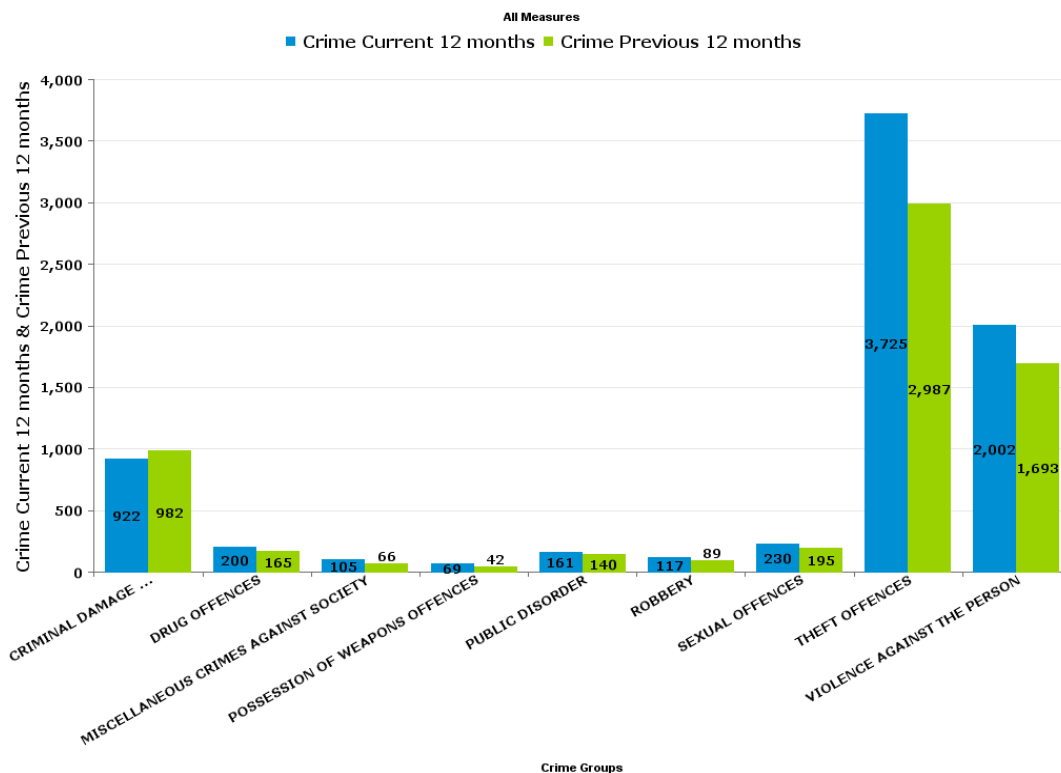


Crime Reports by CSP Sector and Ward

**KETTERING BOROUGH**

Crime Group	Current 12 Months 2016-06 2017-05	Previous 12 Months 2015-06 2016-05	+/- Crime	% Change	Number of resolved Crimes	Resolved Rate (past 12mths)
CRIMINAL DAMAGE & ARSON	922	982	-60	-6.11%	115	12.47%
DRUG OFFENCES	200	165	35	21.21%	172	86.00%
MISCELLANEOUS CRIMES AGAINST SOCIETY	105	66	39	59.09%	31	29.52%
POSSESSION OF WEAPONS OFFENCES	69	42	27	64.29%	43	62.32%
PUBLIC DISORDER	161	140	21	15.00%	62	38.51%
ROBBERY	117	89	28	31.46%	28	23.93%
SEXUAL OFFENCES	230	195	35	17.95%	23	10.00%
THEFT OFFENCES	3725	2987	738	24.71%	411	11.03%
VIOLENCE AGAINST THE PERSON	2002	1693	309	18.25%	379	18.93%
<b>Sum:</b>	<b>7531</b>	<b>6359</b>	<b>1172</b>	<b>18.43%</b>	<b>1264</b>	<b>16.78%</b>



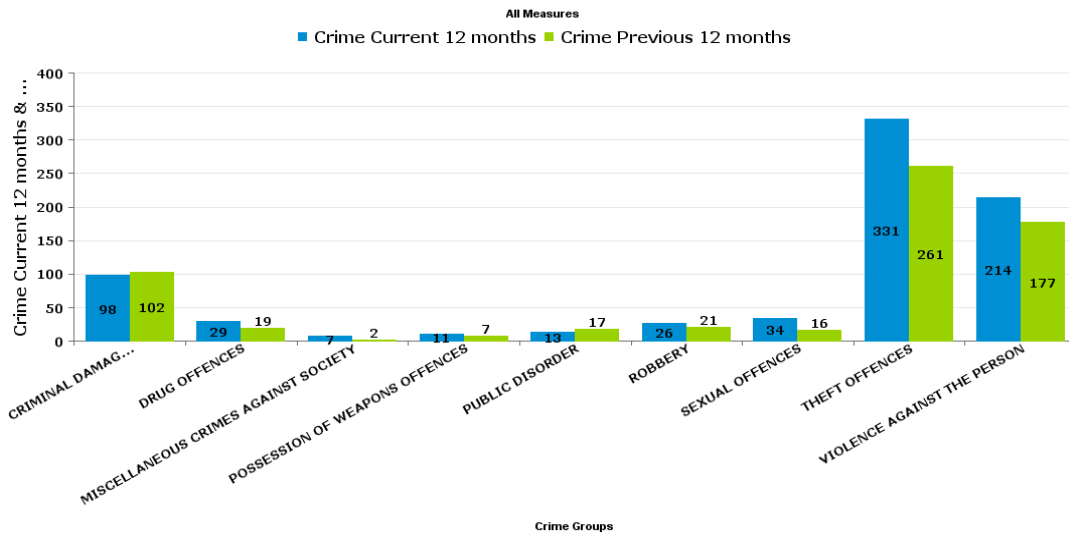
Crime Reports by CSP Sector and Ward

**KETTERING**

**Kettering Towns**

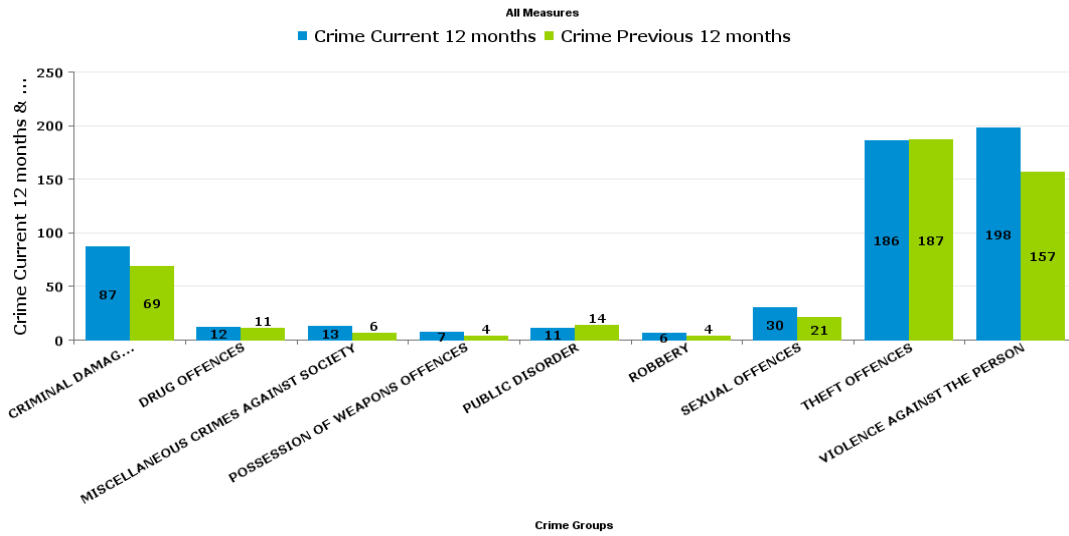
**ALL SAINTS**

Crime Group	Current 12 Months 2016-06 2017-05	Previous 12 Months 2015-06 2016-05	+/- Crime	% Change	Number of resolved Crimes	Resolved Rate (past 12mths)
CRIMINAL DAMAGE & ARSON	98	102	-4	-3.92%	14	14.29%
DRUG OFFENCES	29	19	10	52.63%	26	89.66%
MISCELLANEOUS CRIMES AGAINST SOCIETY	7	2	5	250.00%	4	57.14%
POSSESSION OF WEAPONS OFFENCES	11	7	4	57.14%	6	54.55%
PUBLIC DISORDER	13	17	-4	-23.53%	4	30.77%
ROBBERY	26	21	5	23.81%	7	26.92%
SEXUAL OFFENCES	34	16	18	112.50%	3	8.82%
THEFT OFFENCES	331	261	70	26.82%	36	10.88%
VIOLENCE AGAINST THE PERSON	214	177	37	20.90%	38	17.76%
<b>Sum:</b>	<b>763</b>	<b>622</b>	<b>141</b>	<b>22.67%</b>	<b>138</b>	<b>18.09%</b>



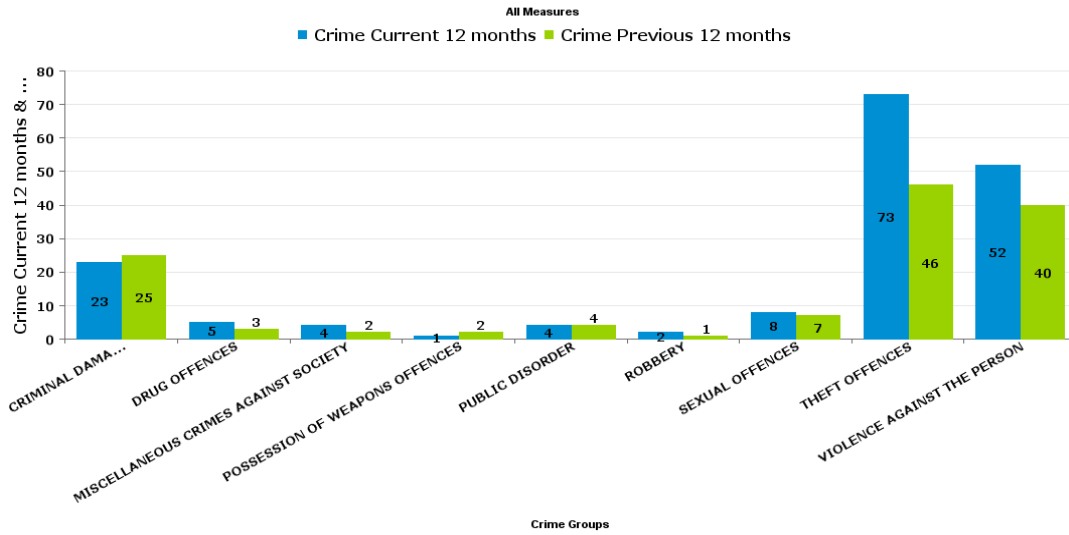
AVONDALE GRANGE

Crime Group	Current 12 Months 2016-06 2017-05	Previous 12 Months 2015-06 2016-05	+/- Crime	% Change	Number of resolved Crimes	Resolved Rate (past 12mths)
CRIMINAL DAMAGE & ARSON	87	69	18	26.09%	7	8.05%
DRUG OFFENCES	12	11	1	9.09%	9	75.00%
MISCELLANEOUS CRIMES AGAINST SOCIETY	13	6	7	116.67%	1	7.69%
POSSESSION OF WEAPONS OFFENCES	7	4	3	75.00%	5	71.43%
PUBLIC DISORDER	11	14	-3	-21.43%	4	36.36%
ROBBERY	6	4	2	50.00%	1	16.67%
SEXUAL OFFENCES	30	21	9	42.86%		
THEFT OFFENCES	186	187	-1	-0.53%	30	16.13%
VIOLENCE AGAINST THE PERSON	198	157	41	26.11%	34	17.17%
<b>Sum:</b>	<b>550</b>	<b>473</b>	<b>77</b>	<b>16.28%</b>	<b>91</b>	<b>16.55%</b>



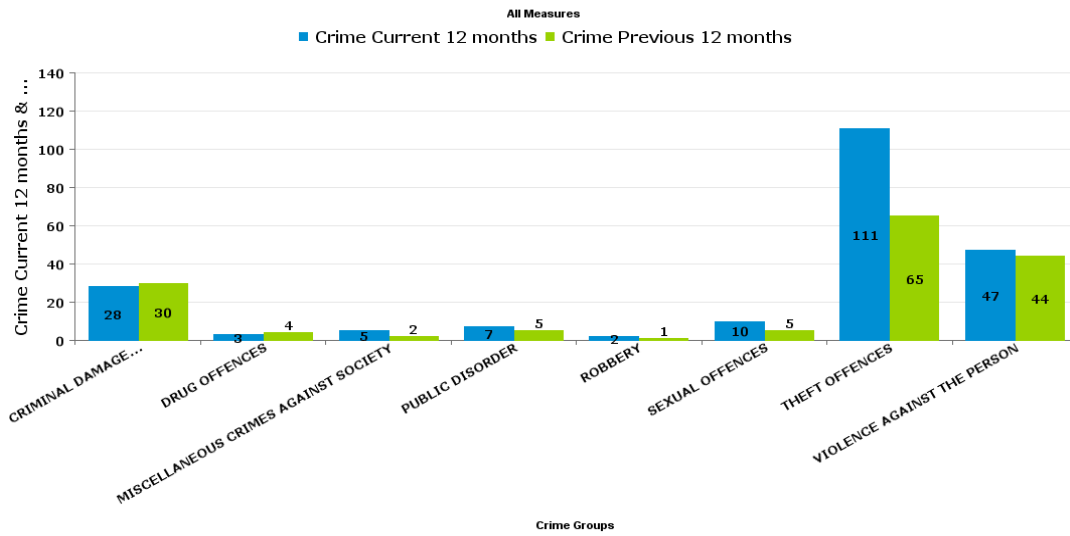
**BRAMBLESIDE**

Crime Group	Current 12 Months 2016-06 2017-05	Previous 12 Months 2015-06 2016-05	+/- Crime	% Change	Number of resolved Crimes	Resolved Rate (past 12mths)
CRIMINAL DAMAGE & ARSON	23	25	-2	-8.00%	7	30.43%
DRUG OFFENCES	5	3	2	66.67%	5	100.00%
MISCELLANEOUS CRIMES AGAINST SOCIETY	4	2	2	100.00%	1	25.00%
POSSESSION OF WEAPONS OFFENCES	1	2	-1	-50.00%	2	200.00%
PUBLIC DISORDER	4	4	0	0.00%	1	25.00%
ROBBERY	2	1	1	100.00%	1	50.00%
SEXUAL OFFENCES	8	7	1	14.29%		
THEFT OFFENCES	73	46	27	58.70%	2	2.74%
VIOLENCE AGAINST THE PERSON	52	40	12	30.00%	13	25.00%
<b>Sum:</b>	<b>172</b>	<b>130</b>	<b>42</b>	<b>32.31%</b>	<b>32</b>	<b>18.60%</b>



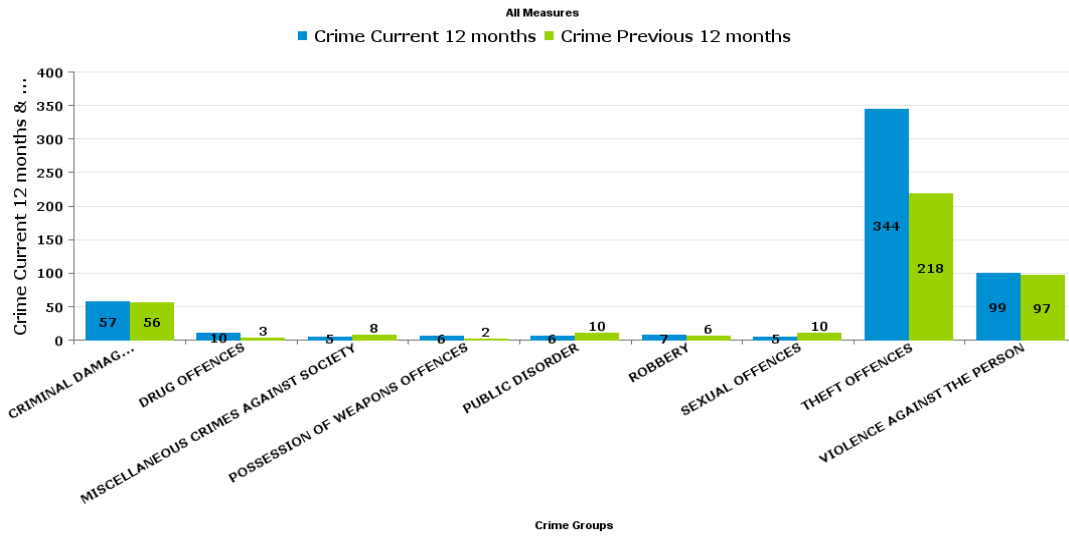
ISE LODGE

Crime Group	Current 12 Months 2016-06 2017-05	Previous 12 Months 2015-06 2016-05	+/- Crime	% Change	Number of resolved Crimes	Resolved Rate (past 12mths)
CRIMINAL DAMAGE & ARSON	28	30	-2	-6.67%	5	17.86%
DRUG OFFENCES	3	4	-1	-25.00%	3	100.00%
MISCELLANEOUS CRIMES AGAINST SOCIETY	5	2	3	150.00%	1	20.00%
PUBLIC DISORDER	7	5	2	40.00%	1	14.29%
ROBBERY	2	1	1	100.00%	1	50.00%
SEXUAL OFFENCES	10	5	5	100.00%	2	20.00%
THEFT OFFENCES	111	65	46	70.77%	10	9.01%
VIOLENCE AGAINST THE PERSON	47	44	3	6.82%	8	17.02%
<b>Sum:</b>	<b>213</b>	<b>156</b>	<b>57</b>	<b>36.54%</b>	<b>31</b>	<b>14.55%</b>



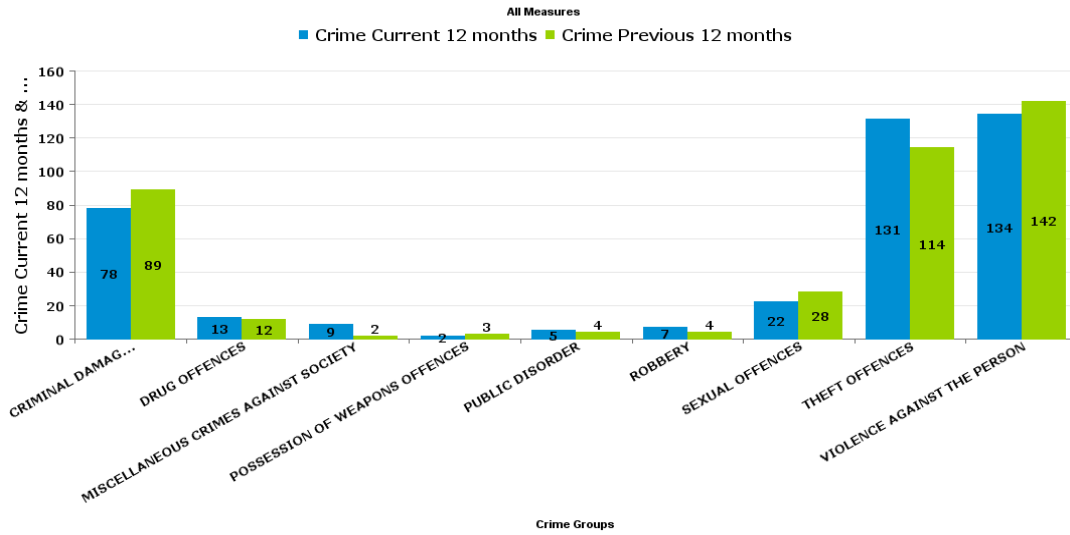
**NORTHFIELD**

Crime Group	Current 12 Months 2016-06 2017-05	Previous 12 Months 2015-06 2016-05	+/- Crime	% Change	Number of resolved Crimes	Resolved Rate (past 12mths)
CRIMINAL DAMAGE & ARSON	57	56	1	1.79%	3	5.26%
DRUG OFFENCES	10	3	7	233.33%	7	70.00%
MISCELLANEOUS CRIMES AGAINST SOCIETY	5	8	-3	-37.50%	1	20.00%
POSSESSION OF WEAPONS OFFENCES	6	2	4	200.00%	4	66.67%
PUBLIC DISORDER	6	10	-4	-40.00%		
ROBBERY	7	6	1	16.67%	2	28.57%
SEXUAL OFFENCES	5	10	-5	-50.00%		
THEFT OFFENCES	344	218	126	57.80%	52	15.12%
VIOLENCE AGAINST THE PERSON	99	97	2	2.06%	20	20.20%
<b>Sum:</b>	<b>539</b>	<b>410</b>	<b>129</b>	<b>31.46%</b>	<b>89</b>	<b>16.51%</b>



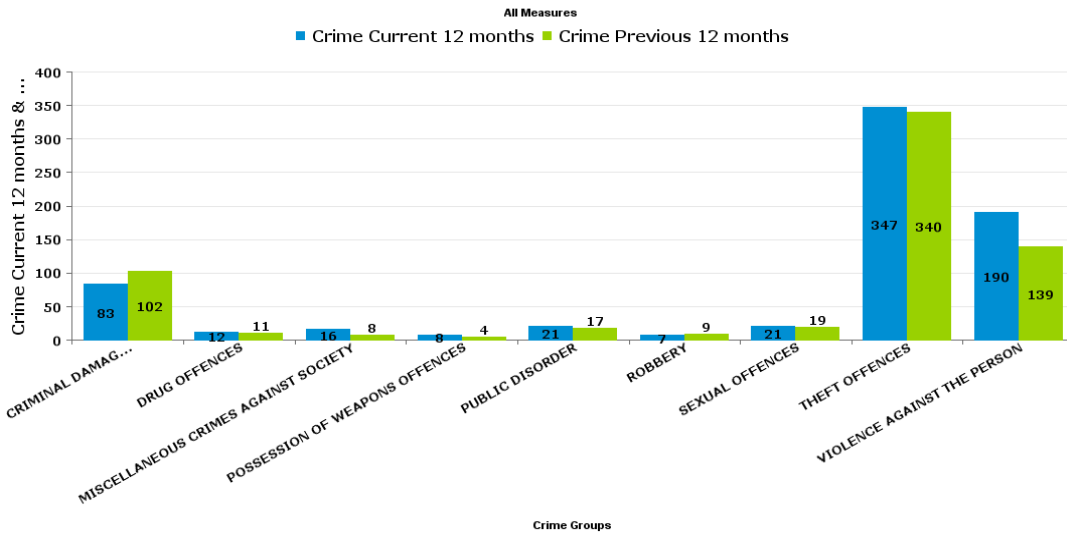
PIPERS HILL

Crime Group	Current 12 Months 2016-06 2017-05	Previous 12 Months 2015-06 2016-05	+/- Crime	% Change	Number of resolved Crimes	Resolved Rate (past 12mths)
CRIMINAL DAMAGE & ARSON	78	89	-11	-12.36%	7	8.97%
DRUG OFFENCES	13	12	1	8.33%	12	92.31%
MISCELLANEOUS CRIMES AGAINST SOCIETY	9	2	7	350.00%	3	33.33%
POSSESSION OF WEAPONS OFFENCES	2	3	-1	-33.33%	1	50.00%
PUBLIC DISORDER	5	4	1	25.00%	1	20.00%
ROBBERY	7	4	3	75.00%		
SEXUAL OFFENCES	22	28	-6	-21.43%	3	13.64%
THEFT OFFENCES	131	114	17	14.91%	8	6.11%
VIOLENCE AGAINST THE PERSON	134	142	-8	-5.63%	21	15.67%
<b>Sum:</b>	<b>401</b>	<b>398</b>	<b>3</b>	<b>0.75%</b>	<b>56</b>	<b>13.97%</b>



ST MICHAELS AND WICKSTEED

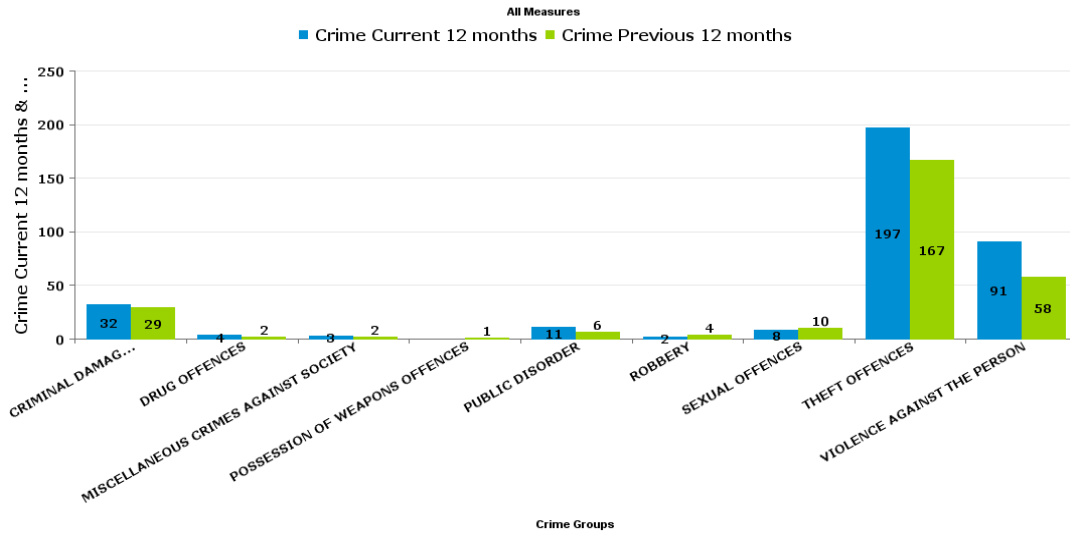
Crime Group	Current 12 Months 2016-06 2017-05	Previous 12 Months 2015-06 2016-05	+/- Crime	% Change	Number of resolved Crimes	Resolved Rate (past 12mths)
CRIMINAL DAMAGE & ARSON	83	102	-19	-18.63%	10	12.05%
DRUG OFFENCES	12	11	1	9.09%	16	133.33%
MISCELLANEOUS CRIMES AGAINST SOCIETY	16	8	8	100.00%	2	12.50%
POSSESSION OF WEAPONS OFFENCES	8	4	4	100.00%	6	75.00%
PUBLIC DISORDER	21	17	4	23.53%	11	52.38%
ROBBERY	7	9	-2	-22.22%	4	57.14%
SEXUAL OFFENCES	21	19	2	10.53%	2	9.52%
THEFT OFFENCES	347	340	7	2.06%	27	7.78%
VIOLENCE AGAINST THE PERSON	190	139	51	36.69%	25	13.16%
<b>Sum:</b>	<b>705</b>	<b>649</b>	<b>56</b>	<b>8.63%</b>	<b>103</b>	<b>14.61%</b>





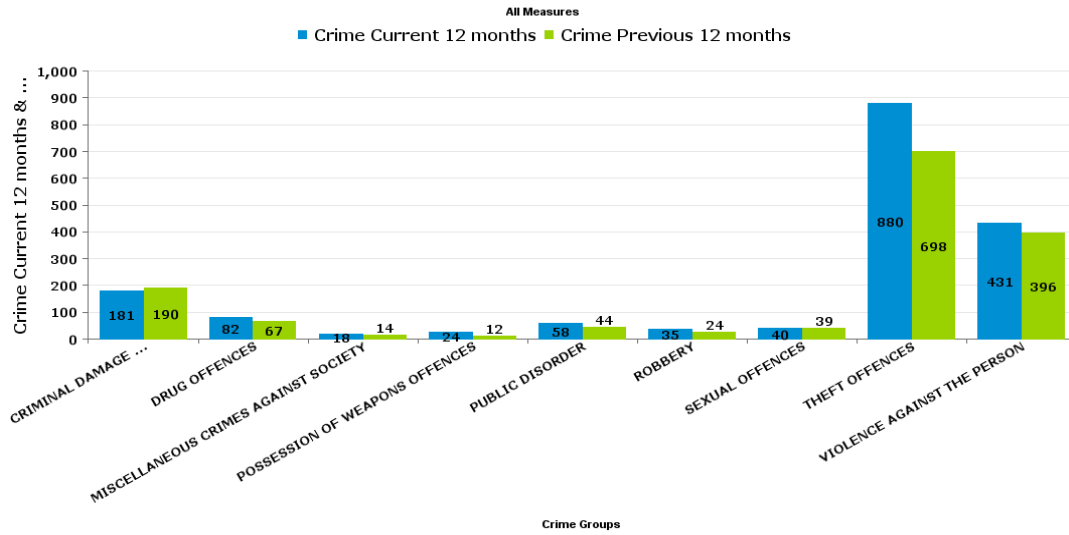
## ST PETERS

Crime Group	Current 12 Months 2016-06 2017-05	Previous 12 Months 2015-06 2016-05	+/- Crime	% Change	Number of resolved Crimes	Resolved Rate (past 12mths)
CRIMINAL DAMAGE & ARSON	32	29	3	10.34%	4	12.50%
DRUG OFFENCES	4	2	2	100.00%	2	50.00%
MISCELLANEOUS CRIMES AGAINST SOCIETY	3	2	1	50.00%	3	100.00%
POSSESSION OF WEAPONS OFFENCES		1	-1	-100.00%		
PUBLIC DISORDER	11	6	5	83.33%	4	36.36%
ROBBERY	2	4	-2	-50.00%		
SEXUAL OFFENCES	8	10	-2	-20.00%	1	12.50%
THEFT OFFENCES	197	167	30	17.96%	10	5.08%
VIOLENCE AGAINST THE PERSON	91	58	33	56.90%	26	28.57%
<b>Sum:</b>	<b>348</b>	<b>279</b>	<b>69</b>	<b>24.73%</b>	<b>50</b>	<b>14.37%</b>



WILLIAM KNIBB

Crime Group	Current 12 Months 2016-06 2017-05	Previous 12 Months 2015-06 2016-05	+/- Crime	% Change	Number of resolved Crimes	Resolved Rate (past 12mths)
CRIMINAL DAMAGE & ARSON	181	190	-9	-4.74%	31	17.13%
DRUG OFFENCES	82	67	15	22.39%	67	81.71%
MISCELLANEOUS CRIMES AGAINST SOCIETY	18	14	4	28.57%	7	38.89%
POSSESSION OF WEAPONS OFFENCES	24	12	12	100.00%	17	70.83%
PUBLIC DISORDER	58	44	14	31.82%	29	50.00%
ROBBERY	35	24	11	45.83%	9	25.71%
SEXUAL OFFENCES	40	39	1	2.56%	4	10.00%
THEFT OFFENCES	880	698	182	26.07%	166	18.86%
VIOLENCE AGAINST THE PERSON	431	396	35	8.84%	94	21.81%
<b>Sum:</b>	<b>1749</b>	<b>1484</b>	<b>265</b>	<b>17.86%</b>	<b>424</b>	<b>24.24%</b>



ASB Reports by CSP Sector and Ward

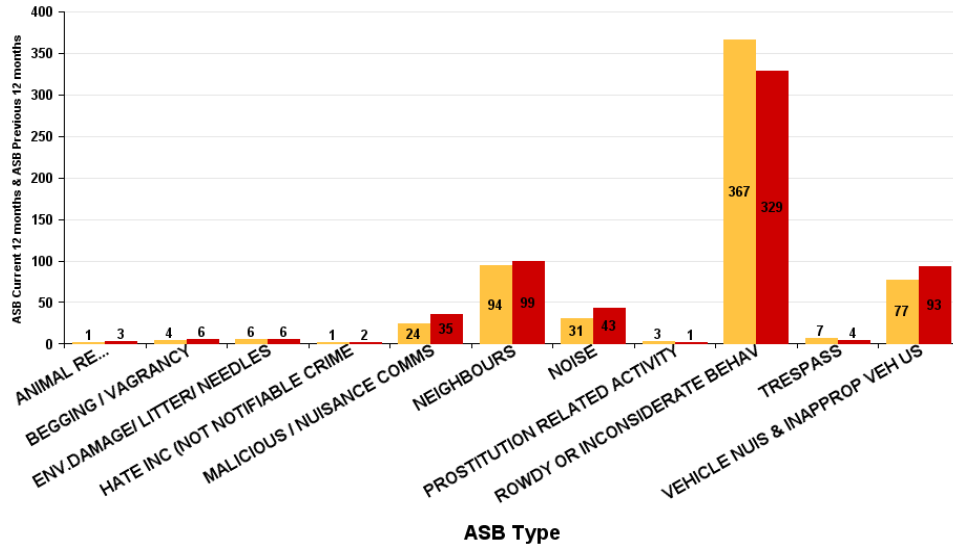
**KETTERING TOWN FORUM**

All Saints

ASB Type	Current 12 Months 2016-06 2017-05	Previous 12 Months 2015-06 2016-05	+/- Crime	% Change
ANIMAL RELATED INC ANTI-SOCIAL	1	3	-2	-66.67%
BEGGING / VAGRANCY	4	6	-2	-33.33%
ENV.DAMAGE/ LITTER/ NEEDLES	6	6	0	0.00%
HATE INC (NOT NOTIFIABLE CRIME)	1	2	-1	-50.00%
MALICIOUS / NUISANCE COMMS	24	35	-11	-31.43%
NEIGHBOURS	94	99	-5	-5.05%
NOISE	31	43	-12	-27.91%
PROSTITUTION RELATED ACTIVITY	3	1	2	200.00%
ROWDY OR INCONSIDERATE BEHAV	367	329	38	11.55%
TRESPASS	7	4	3	75.00%
VEHICLE NUIS & INAPPROP VEH US	77	93	-16	-17.20%
<b>Sum:</b>	<b>615</b>	<b>621</b>	<b>-6</b>	<b>-0.97%</b>

ASB

■ ASB Current 12 months ■ ASB Previous 12 months

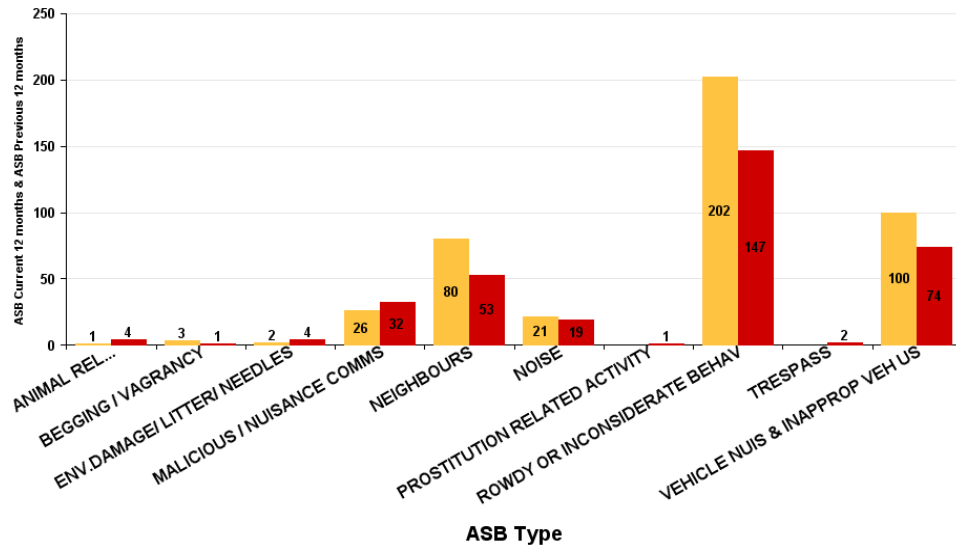


### Avondale Grange

ASB Type	Current 12 Months 2016-06 2017-05	Previous 12 Months 2015-06 2016-05	+/- Crime	% Change
ANIMAL RELATED INC ANTI-SOCIAL	1	4	-3	-75.00%
BEGGING / VAGRANCY	3	1	2	200.00%
ENV.DAMAGE/ LITTER/ NEEDLES	2	4	-2	-50.00%
MALICIOUS / NUISANCE COMMS	26	32	-6	-18.75%
NEIGHBOURS	80	53	27	50.94%
NOISE	21	19	2	10.53%
PROSTITUTION RELATED ACTIVITY		1	-1	-100.00%
ROWDY OR INCONSIDERATE BEHAV	202	147	55	37.41%
TRESPASS		2	-2	-100.00%
VEHICLE NUJS & INAPPROP VEH US	100	74	26	35.14%
<b>Sum:</b>	<b>435</b>	<b>337</b>	<b>98</b>	<b>29.08%</b>

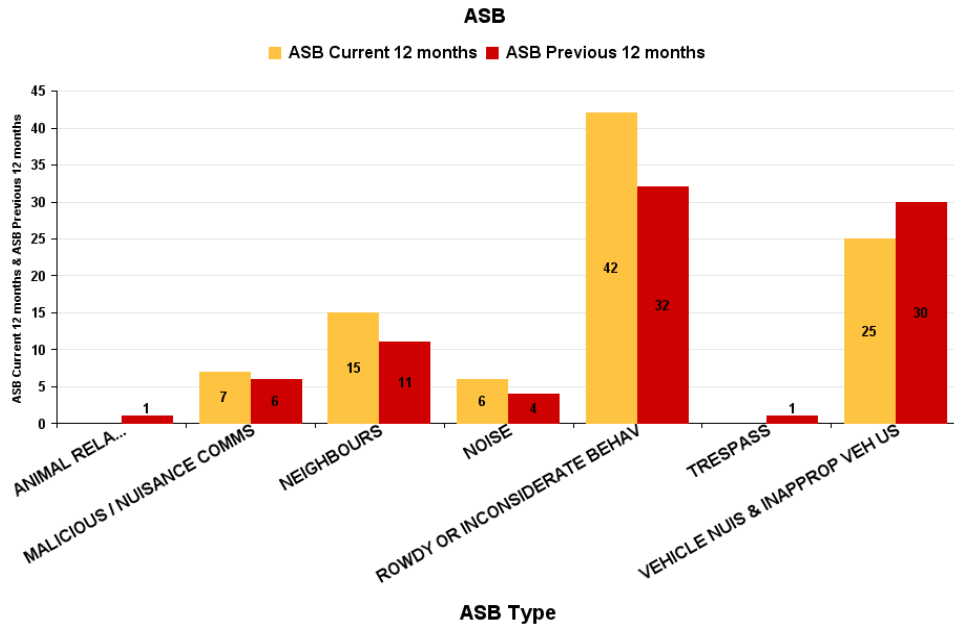
### ASB

■ ASB Current 12 months ■ ASB Previous 12 months



**Brambleside**

ASB Type	Current 12 Months 2016-06 2017-05	Previous 12 Months 2015-06 2016-05	+/- Crime	% Change
ANIMAL RELATED INC ANTI-SOCIAL		1	-1	-100.00%
MALICIOUS / NUISANCE COMMS	7	6	1	16.67%
NEIGHBOURS	15	11	4	36.36%
NOISE	6	4	2	50.00%
ROWDY OR INCONSIDERATE BEHAV	42	32	10	31.25%
TRESPASS		1	-1	-100.00%
VEHICLE NUIS & INAPPROP VEH US	25	30	-5	-16.67%
<b>Sum:</b>	<b>95</b>	<b>85</b>	<b>10</b>	<b>11.76%</b>

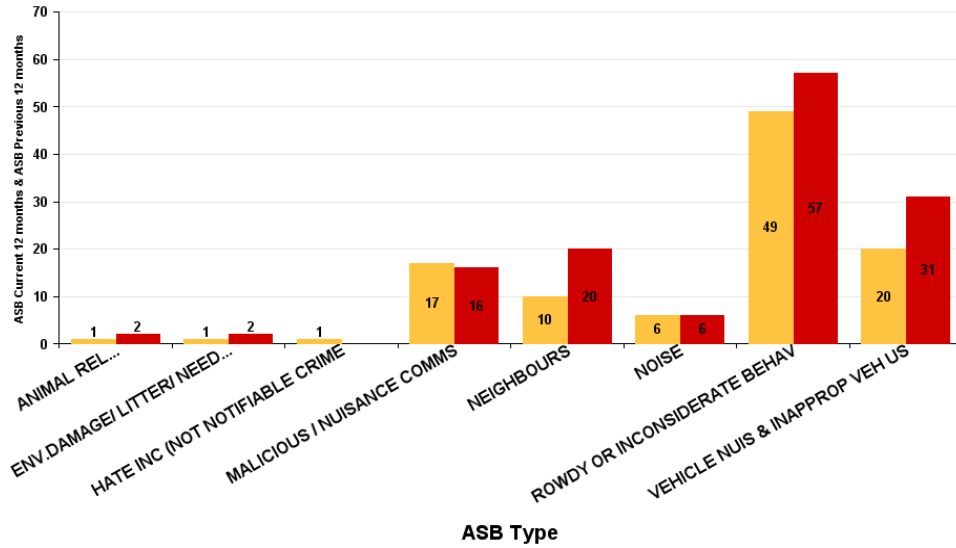


**Ise Lodge**

ASB Type	Current 12 Months 2016-06 2017-05	Previous 12 Months 2015-06 2016-05	+/- Crime	% Change
ANIMAL RELATED INC ANTI-SOCIAL	1	2	-1	-50.00%
ENV.DAMAGE/ LITTER/ NEEDLES	1	2	-1	-50.00%
HATE INC (NOT NOTIFIABLE CRIME	1		1	-100.00%
MALICIOUS / NUISANCE COMMS	17	16	1	6.25%
NEIGHBOURS	10	20	-10	-50.00%
NOISE	6	6	0	0.00%
ROWDY OR INCONSIDERATE BEHAV	49	57	-8	-14.04%
VEHICLE NUIS & INAPPROP VEH US	20	31	-11	-35.48%
<b>Sum:</b>	<b>105</b>	<b>134</b>	<b>-29</b>	<b>-21.64%</b>

**ASB**

■ ASB Current 12 months ■ ASB Previous 12 months

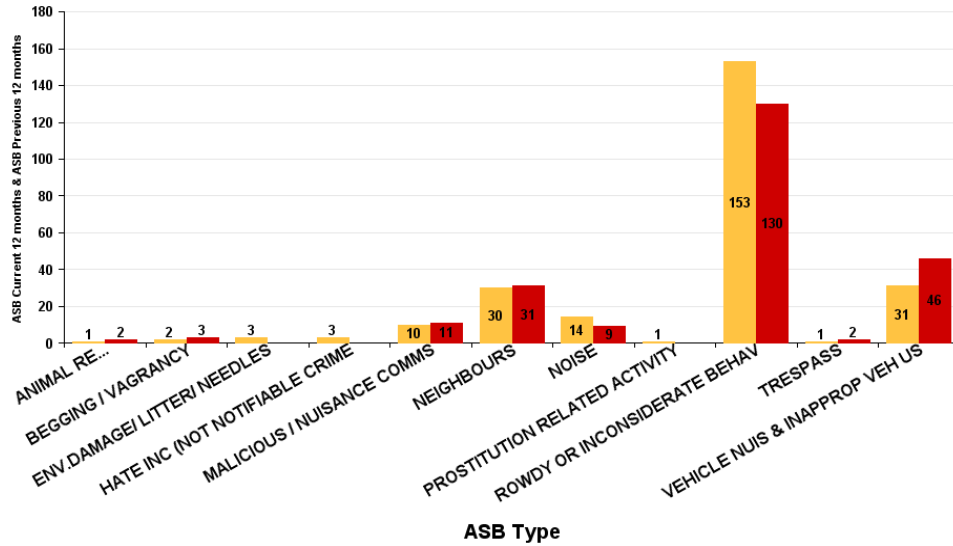


## Northfield

ASB Type	Current 12 Months 2016-06 2017-05	Previous 12 Months 2015-06 2016-05	+/- Crime	% Change
ANIMAL RELATED INC ANTI-SOCIAL	1	2	-1	-50.00%
BEGGING / VAGRANCY	2	3	-1	-33.33%
ENV.DAMAGE/ LITTER/ NEEDLES	3		3	-100.00%
HATE INC (NOT NOTIFIABLE CRIME	3		3	-100.00%
MALICIOUS / NUISANCE COMMS	10	11	-1	-9.09%
NEIGHBOURS	30	31	-1	-3.23%
NOISE	14	9	5	55.56%
PROSTITUTION RELATED ACTIVITY	1		1	-100.00%
ROWDY OR INCONSIDERATE BEHAV	153	130	23	17.69%
TRESPASS	1	2	-1	-50.00%
VEHICLE NUIS & INAPPROP VEH US	31	46	-15	-32.61%
<b>Sum:</b>	<b>249</b>	<b>234</b>	<b>15</b>	<b>6.41%</b>

### ASB

■ ASB Current 12 months ■ ASB Previous 12 months

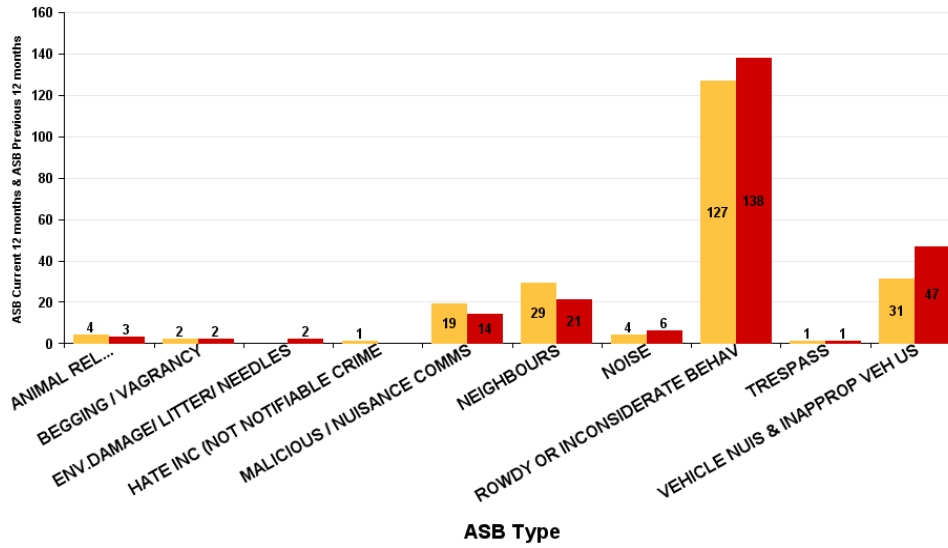


**Pipers Hill**

ASB Type	Current 12 Months 2016-06 2017-05	Previous 12 Months 2015-06 2016-05	+/- Crime	% Change
ANIMAL RELATED INC ANTI-SOCIAL	4	3	1	33.33%
BEGGING / VAGRANCY	2	2	0	0.00%
ENV.DAMAGE/ LITTER/ NEEDLES		2	-2	-100.00%
HATE INC (NOT NOTIFIABLE CRIME	1		1	-100.00%
MALICIOUS / NUISANCE COMMS	19	14	5	35.71%
NEIGHBOURS	29	21	8	38.10%
NOISE	4	6	-2	-33.33%
ROWDY OR INCONSIDERATE BEHAV	127	138	-11	-7.97%
TRESPASS	1	1	0	0.00%
VEHICLE NUJS & INAPPROP VEH US	31	47	-16	-34.04%
<b>Sum:</b>	<b>218</b>	<b>234</b>	<b>-16</b>	<b>-6.84%</b>

**ASB**

■ ASB Current 12 months ■ ASB Previous 12 months



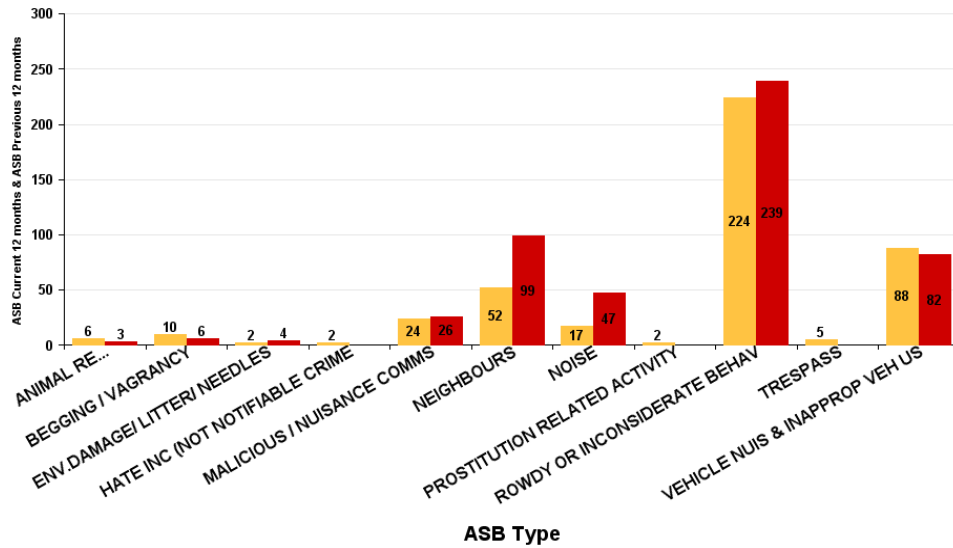


### St Michaels and Wicksteed

ASB Type	Current 12 Months 2016-06 2017-05	Previous 12 Months 2015-06 2016-05	+/- Crime	% Change
ANIMAL RELATED INC ANTI-SOCIAL	6	3	3	100.00%
BEGGING / VAGRANCY	10	6	4	66.67%
ENV.DAMAGE/ LITTER/ NEEDLES	2	4	-2	-50.00%
HATE INC (NOT NOTIFIABLE CRIME	2		2	-100.00%
MALICIOUS / NUISANCE COMMS	24	26	-2	-7.69%
NEIGHBOURS	52	99	-47	-47.47%
NOISE	17	47	-30	-63.83%
PROSTITUTION RELATED ACTIVITY	2		2	-100.00%
ROWDY OR INCONSIDERATE BEHAV	224	239	-15	-6.28%
TRESPASS	5		5	-100.00%
VEHICLE NUIS & INAPPROP VEH US	88	82	6	7.32%
<b>Sum:</b>	<b>432</b>	<b>506</b>	<b>-74</b>	<b>-14.62%</b>

#### ASB

■ ASB Current 12 months ■ ASB Previous 12 months

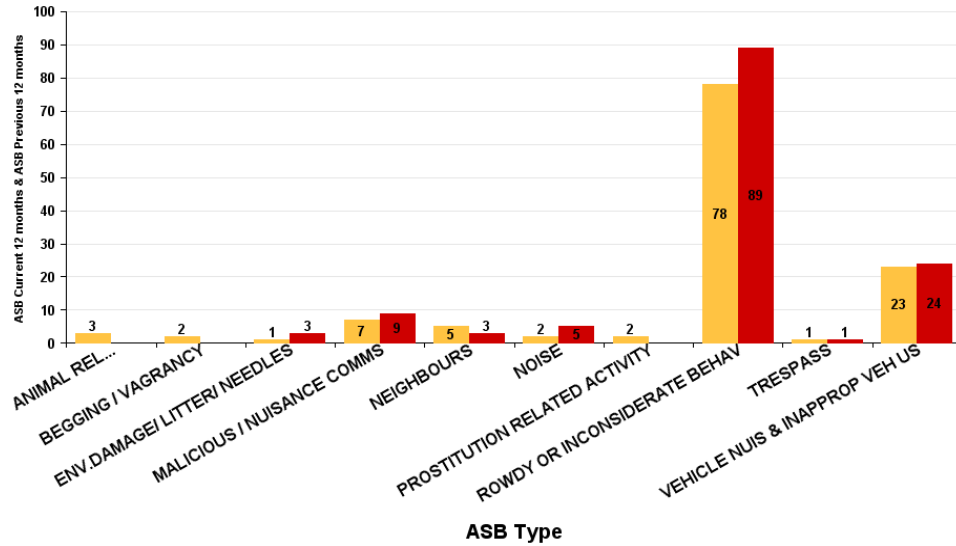


## St Peters

ASB Type	Current 12 Months 2016-06 2017-05	Previous 12 Months 2015-06 2016-05	+/- Crime	% Change
ANIMAL RELATED INC ANTI-SOCIAL	3		3	-100.00%
BEGGING / VAGRANCY	2		2	-100.00%
ENV.DAMAGE/ LITTER/ NEEDLES	1	3	-2	-66.67%
MALICIOUS / NUISANCE COMMS	7	9	-2	-22.22%
NEIGHBOURS	5	3	2	66.67%
NOISE	2	5	-3	-60.00%
PROSTITUTION RELATED ACTIVITY	2		2	-100.00%
ROWDY OR INCONSIDERATE BEHAV	78	89	-11	-12.36%
TRESPASS	1	1	0	0.00%
VEHICLE NUJS & INAPPROP VEH US	23	24	-1	-4.17%
<b>Sum:</b>	<b>124</b>	<b>134</b>	<b>-10</b>	<b>-7.46%</b>

### ASB

■ ASB Current 12 months ■ ASB Previous 12 months



**William Knibb**

ASB Type	Current 12 Months 2016-06 2017-05	Previous 12 Months 2015-06 2016-05	+/- Crime	% Change
ANIMAL RELATED INC ANTI-SOCIAL	5	3	2	66.67%
BEGGING / VAGRANCY	43	35	8	22.86%
ENV.DAMAGE/ LITTER/ NEEDLES	19	8	11	137.50%
HATE INC (NOT NOTIFIABLE CRIME	1		1	-100.00%
MALICIOUS / NUISANCE COMMS	28	27	1	3.70%
NEIGHBOURS	126	48	78	162.50%
NOISE	34	24	10	41.67%
PROSTITUTION RELATED ACTIVITY	3	2	1	50.00%
ROWDY OR INCONSIDERATE BEHAV	660	541	119	22.00%
TRESPASS	11	4	7	175.00%
VEHICLE NUIS & INAPPROP VEH US	64	82	-18	-21.95%
<b>Sum:</b>	<b>994</b>	<b>774</b>	<b>220</b>	<b>28.42%</b>

**ASB**

■ ASB Current 12 months ■ ASB Previous 12 months

