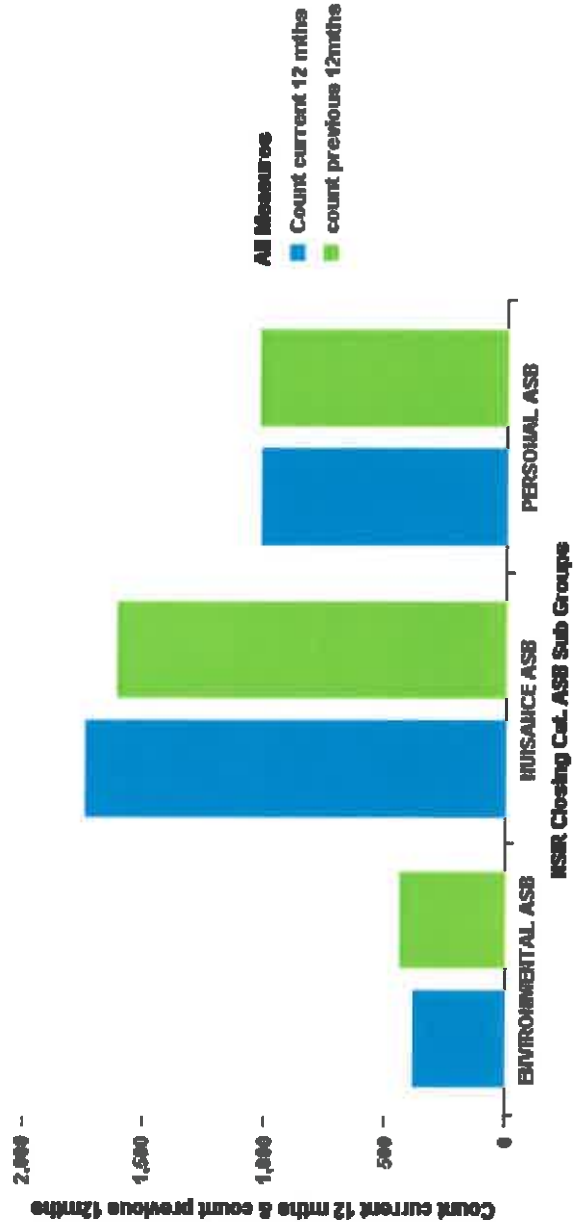


Kettering Town Forum ASB Type - Last 24 months

NSIR Closing Cat. ASB	Kettering Forums	Current 12 months	Previous 12 months	Difference	% Difference
ENVIRONMENTAL ASB	Kettering Town	381	435	-54	-12.4%
NUISANCE ASB	Kettering Town	1737	1606	131	8.2%
PERSONAL ASB	Kettering Town	1017	1023	-6	-0.6%
Sum:		3135	3064	71	2.3%

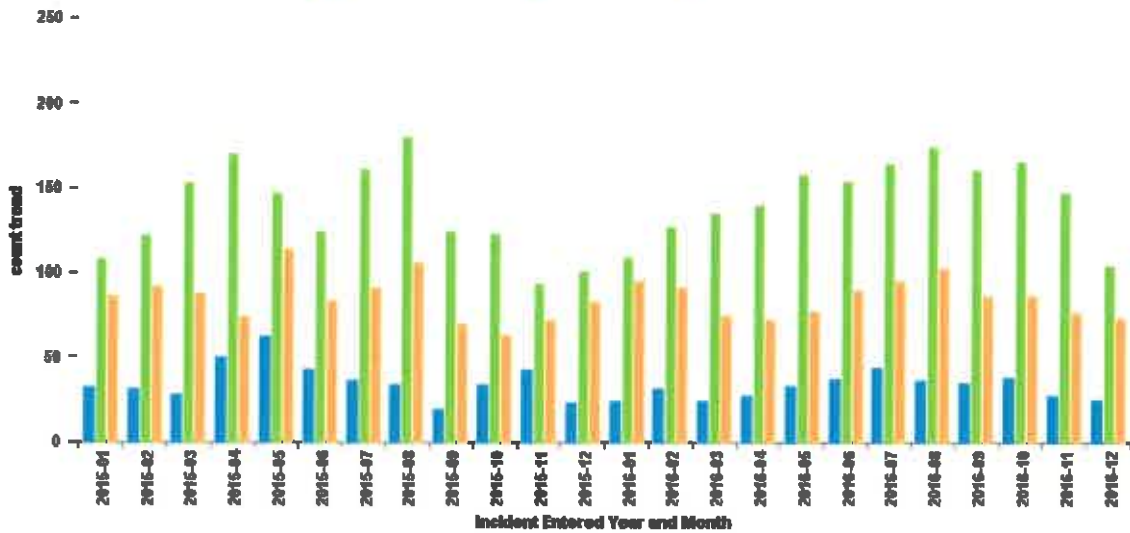


Kettering Town Forum ASB by Month - Last 24 months

Measuring Date ASB	ENVIRONMENTAL ASB	NUISANCE ASB	PERSONAL ASB	Sum:
2015-01	32	108	86	226
2015-02	31	122	92	245
2015-03	28	153	88	269
2015-04	50	170	74	294
2015-05	62	147	114	323
2015-06	43	124	84	251
2015-07	36	161	91	288
2015-08	34	180	106	320
2015-09	19	124	70	213
2015-10	34	123	63	220
2015-11	43	93	72	208
2015-12	23	101	83	207
2016-01	24	109	95	228
2016-02	31	127	91	249
2016-03	24	135	75	234
2016-04	27	140	72	239
2016-05	33	158	77	268
2016-06	37	154	89	280
2016-07	44	164	95	303
2016-08	36	174	102	312
2016-09	35	160	86	281
2016-10	38	165	86	289
2016-11	27	147	76	250
2016-12	25	104	73	202
Sum:	816	3343	1040	5199

NRN Closing Cat. ASB Sub Groups

■ ENVIRONMENTAL ASB ■ NUISANCE ASB ■ PERSONAL ASB



All Crime LAST 24 MONTHS between 2015-01 and 2016-12

Kettering Town Forum Current (last 12 months) and Previous (last proceeding 12 months)

Crime Free LV3 Desc	Current 12 Months All Crime	Previous 12 Months All Crime	Number of Crimes Difference	%	Resolved	Resolved rate Current 12 mths
ALL OTHER THEFT OFFENCES	475	405	70	17.28%	1	0.21%
ARSON	38	22	16	72.73%	1	2.63%
BICYCLE THEFT	79	45	34	75.56%	1	1.27%
BURGLARY	621	451	170	37.69%	1	0.16%
CRIMINAL DAMAGE	644	645	-1	-0.16%	1	0.16%
DRUG POSSESSION	135	116	19	16.38%	1	0.74%
DRUG TRAFFICKING	20	25	-5	-20.00%	1	5.00%
MISCELLANEOUS CRIMES AGAINST SOCIETY	66	48	18	37.50%	1	1.52%
OTHER SEXUAL OFFENCES	103	112	-9	-8.04%	1	0.97%
POSSESSION OF WEAPONS OFFENCES	44	27	17	62.96%	1	2.27%
PUBLIC DISORDER	121	136	-15	-11.03%	1	0.83%
RAPE	51	54	-3	-5.56%	1	1.96%
ROBBERY OF BUSINESS PROPERTY	18	10	8	80.00%	1	5.56%
ROBBERY OF PERSONAL PROPERTY	72	58	14	24.14%	1	1.39%
SHOPLIFTING	745	461	284	61.61%	1	0.13%
THEFT FROM THE PERSON	89	72	17	23.61%	0	0.00%
VEHICLE CRIME	466	372	94	25.27%	1	0.21%
VIOLENCE WITH INJURY	663	516	147	28.49%	1	0.15%
VIOLENCE WITHOUT INJURY	712	668	44	6.59%	1	0.14%
Sum:	5162	4243	919	21.66%	18	25.30%

