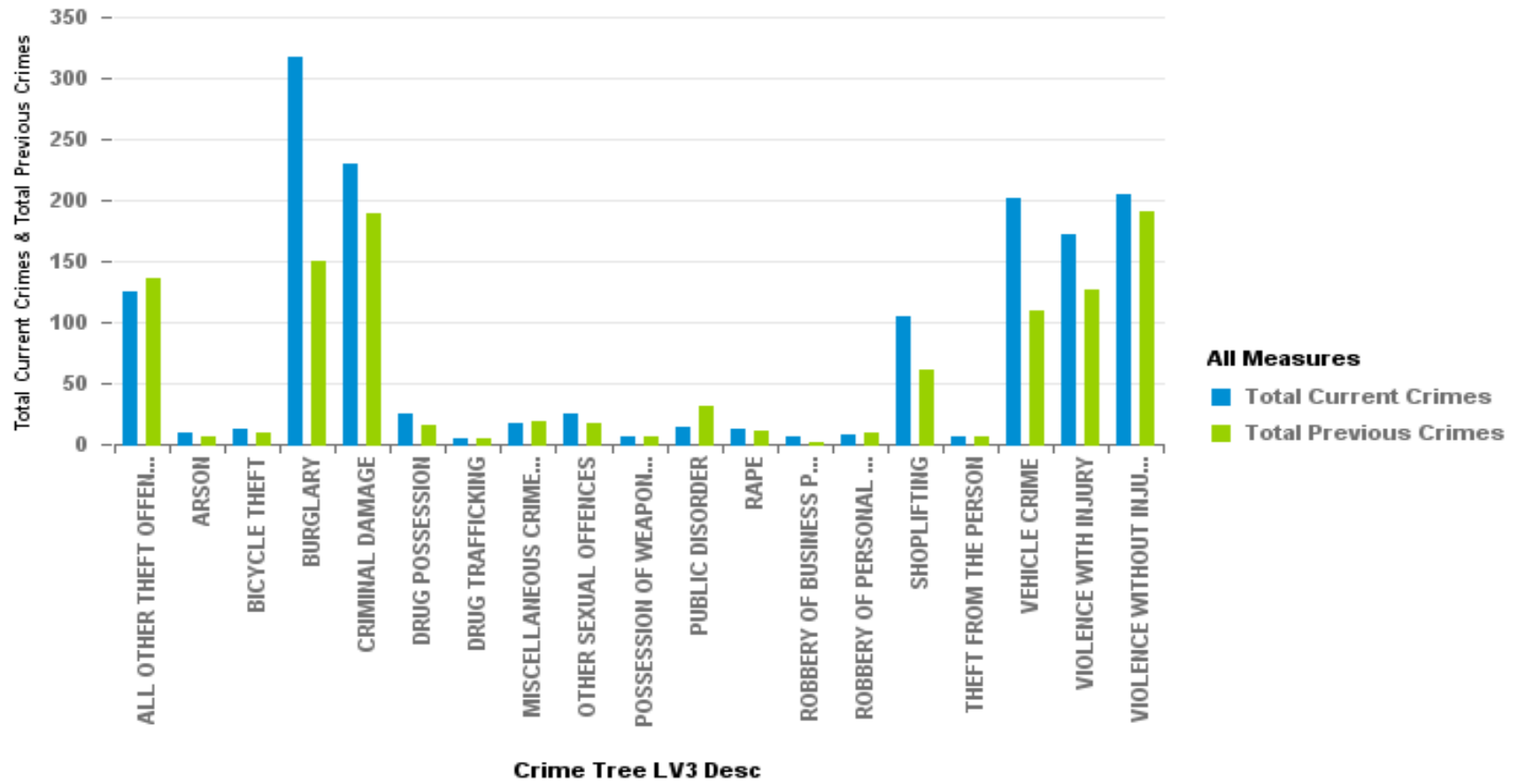


## All Crime LAST 24 MONTHS between 2014-10 and 2016-09

### Kettering A6 Towns Forum Current (last 12 rolling months) and Previous (last proceeding 12 months)

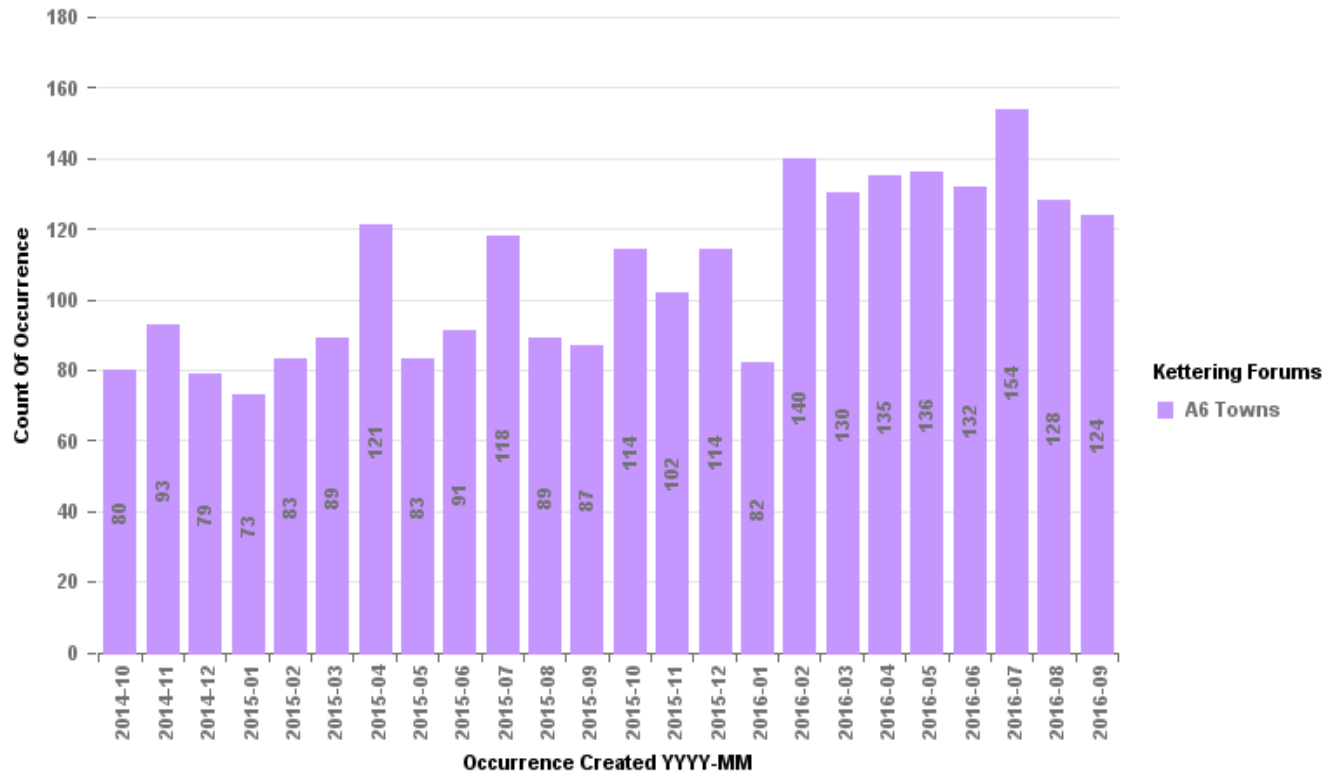
Crime Tree LV3 Desc	Current 12 Months All Crime	Previous 12 Months All Crime	Resolved	Resolved rate Current 12 mths	Number of Crimes Difference	%
ALL OTHER THEFT OFFENCES	124	135	1	0.81%	-11	-8.15%
ARSON	8	5	0	0.00%	3	60.00%
BICYCLE THEFT	12	8	0	0.00%	4	50.00%
BURGLARY	317	150	1	0.32%	167	111.33%
CRIMINAL DAMAGE	230	188	1	0.43%	42	22.34%
DRUG POSSESSION	25	15	1	4.00%	10	66.67%
DRUG TRAFFICKING	4	4	1	25.00%	0	0.00%
MISCELLANEOUS CRIMES AGAINST SOCIETY	17	18	1	5.88%	-1	-5.56%
OTHER SEXUAL OFFENCES	25	16	1	4.00%	9	56.25%
POSSESSION OF WEAPONS OFFENCES	6	6	1	16.67%	0	0.00%
PUBLIC DISORDER	13	30	1	7.69%	-17	-56.67%
RAPE	11	10	0	0.00%	1	10.00%
ROBBERY OF BUSINESS PROPERTY	5	1	1	20.00%	4	400.00%
ROBBERY OF PERSONAL PROPERTY	7	8	0	0.00%	-1	-12.50%
SHOPLIFTING	104	61	1	0.96%	43	70.49%
THEFT FROM THE PERSON	5	5	0	0.00%	0	0.00%
VEHICLE CRIME	202	109	1	0.50%	93	85.32%
VIOLENCE WITH INJURY	172	126	1	0.58%	46	36.51%
VIOLENCE WITHOUT INJURY	204	191	1	0.49%	13	6.81%
<b>Sum:</b>	<b>1491</b>	<b>1086</b>	<b>14</b>	<b>0.94%</b>	<b>405</b>	<b>37.29%</b>



**All Crime LAST 24 MONTHS between 2014-10 and 2016-09**

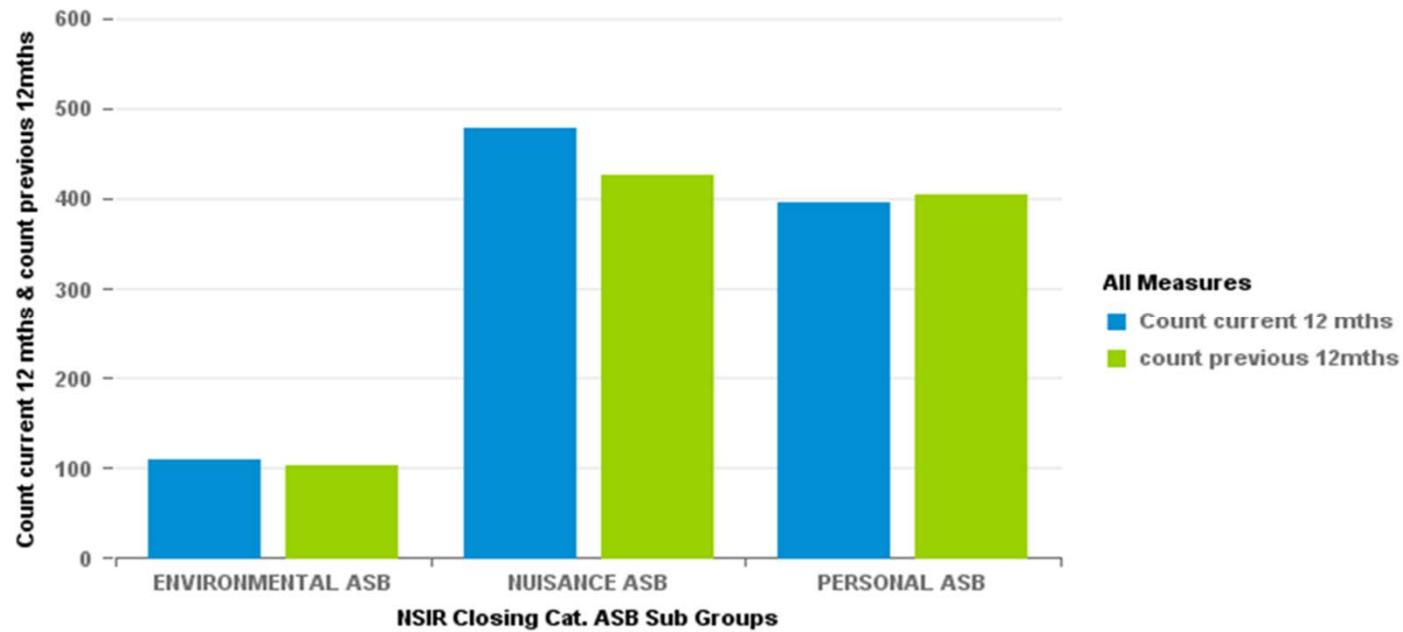
**Kettering A6 Towns Forum By Month Current (last 12 rolling months) and Previous (last proceeding 12 months)**

Kettering A6 Towns	ALL OTHER	ARSON	BICYCLE THEFT	BURGLARY	CRIMINAL DAMAGE	DRUG POSSESSION	DRUG TRAFFICK	MISCELLANEOUS	OTHER SEXUAL	POSSESSION OF	PUBLIC DISORDER	RAPE	ROBBERY OF	ROBBERY OF	SHOPLIFTING	THEFT FROM THE	VEHICLE CRIME	VIOLENCE WITH	VIOLENCE WITHOUT	Sum:
2014-10	14		1	11	9	2	2	1			4		1		3	1	12	6	14	80
2014-11	10			16	24			1	1		1				7	1	12	9	11	93
2014-12	10			8	11	2	1	5	1	1	1	2			7	1	3	7	19	79
2015-01	10		1	6	15		1	3	1		2			1	4		9	11	9	73
2015-02	10			5	23	2		1	2	1	2	2			7		6	13	9	83
2015-03	9			8	19	1		1	1		3				5		9	8	25	89
2015-04	14	1		22	19	3		2	6	2	7	2		2	4	2	9	12	14	121
2015-05	9		1	10	11	1			2	1	3	3		1	3		11	7	20	83
2015-06	15	1	1	14	9	3				1	2				4		11	14	16	91
2015-07	15	1	3	24	16			2			3			2	5	1	11	18	17	118
2015-08	10		1	12	15			2	1		1	1			5		7	11	23	89
2015-09	9	2		14	17	1			1		1			2	7		9	10	14	87
2015-10	14		1	26	20				2			1		1	10		19	9	11	114
2015-11	7	1		19	16	3			2	1	1				13		11	9	19	102
2015-12	11			14	23	4			1	1		1	1		13		9	19	17	114
2016-01	9	1	1	11	12							2			7	1	9	13	16	82
2016-02	16	1	3	26	25			3	3		3	1	4	2	6	1	13	13	20	140
2016-03	8	1	2	34	16		1	1	2	1		3			10	2	13	17	19	130
2016-04	9		1	36	27	1		2	4	1	1	1			12		17	10	13	135
2016-05	8	1		20	22	1	1	3	1			1		2	11	1	25	19	20	136
2016-06	11			39	15	1		2	4	1				2	6		19	14	18	132
2016-07	8	1	2	40	22	4			3		2				8		23	21	20	154
2016-08	12		2	28	16	3		1	1	1	3				3		21	18	19	128
2016-09	11	2		24	16	8	2	5	2		3	1			5		23	10	12	124
Sum:	259	13	20	467	418	40	8	35	41	12	43	21	6	15	165	10	311	298	395	2577



### Kettering A6 New Towns ASB Type - Last 24 months

NSIR Closing Cat. ASB Sub Groups	Kettering Forums	Current 12 months	Previous 12 months	Difference	% Difference
ENVIRONMENTAL ASB	Kettering A6 Towns	109	104	5	4.8%
NUISANCE ASB	Kettering A6 Towns	478	427	51	11.9%
PERSONAL ASB	Kettering A6 Towns	396	404	-8	-2.0%
	<b>Sum:</b>	<b>983</b>	<b>935</b>	<b>48</b>	<b>5.1%</b>



**Kettering A6 New towns ASB by Month**

Kettering Rural ASB	ENVIRONMENTAL ASB	NUISANCE ASB	PERSONAL ASB	Sum:
2014-10	7	38	27	72
2014-11	6	38	28	72
2014-12	9	32	42	83
2015-01	5	27	36	68
2015-02	5	48	29	82
2015-03	6	29	43	78
2015-04	7	40	31	78
2015-05	11	35	37	83
2015-06	10	26	34	70
2015-07	14	46	42	102
2015-08	18	32	30	80
2015-09	6	36	25	67
2015-10	8	24	33	65
2015-11	6	24	25	55
2015-12	12	26	33	71
2016-01	4	39	32	75
2016-02	7	36	33	76
2016-03	9	41	26	76
2016-04	11	46	31	88
2016-05	10	51	39	100
2016-06	10	45	39	94
2016-07	10	52	40	102
2016-08	14	54	31	99
2016-09	8	40	34	82
<b>Sum:</b>	<b>213</b>	<b>905</b>	<b>800</b>	<b>1918</b>

### NSIR Closing Cat. ASB Sub Groups

ENVIRONMENTAL ASB    NUISANCE ASB    PERSONAL ASB

