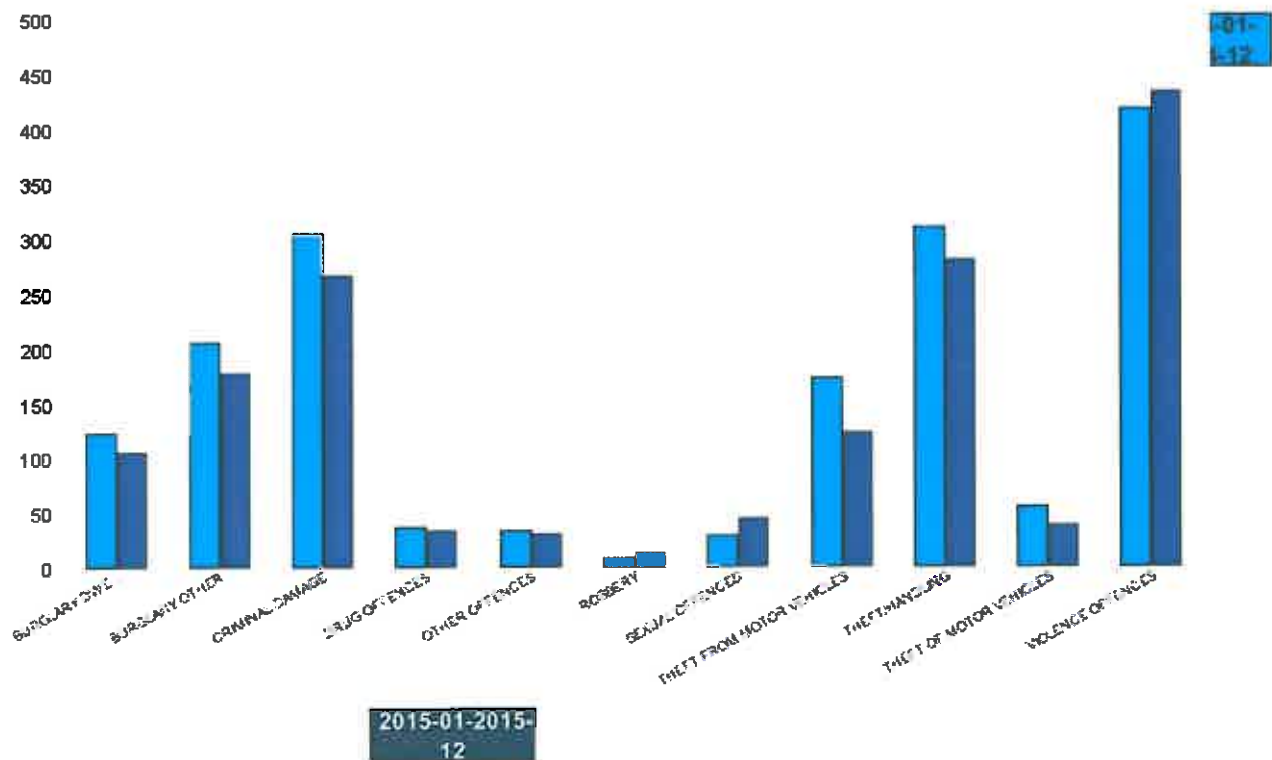


Kettering Rural Forum Report 2014-01 to 2015-12

Kettering Rural SCT - Crime

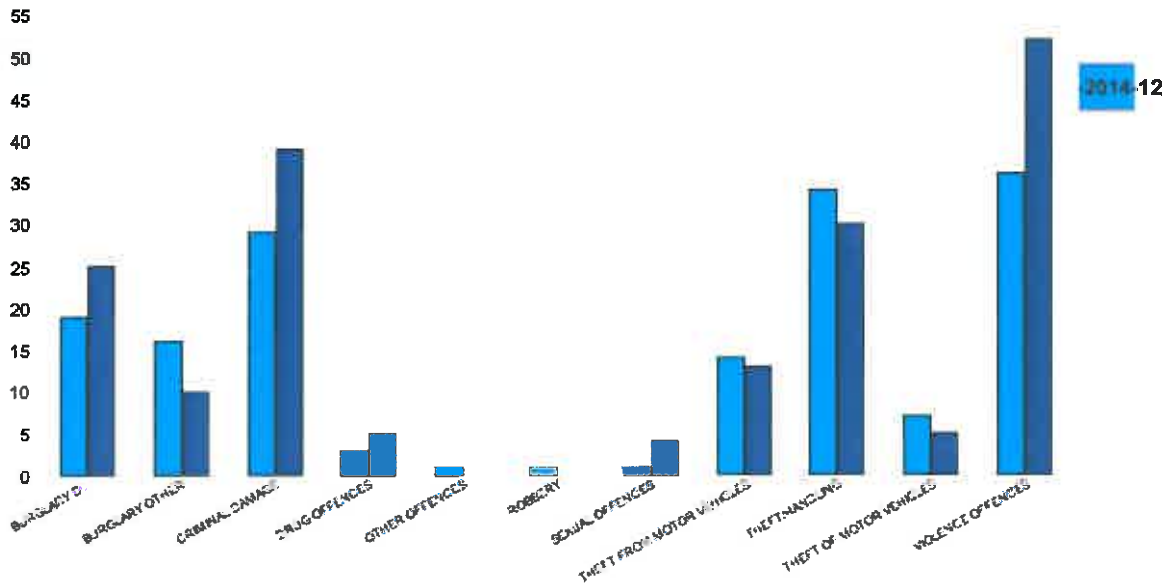
HO Group	No of Crimes Latest 12 Months	No of Crimes Previous 12 Months	+/- Crime	% Change	No of Resolved Outcome Crimes	Detection Rate (Past 12 Months)
BURGLARY DWELLING	106	122	-16	-13%	9	8%
BURGLARY OTHER	177	206	-29	-14%	6	3%
CRIMINAL DAMAGE	266	304	-38	-13%	26	10%
DRUG OFFENCES	34	37	-3	-8%	31	91%
OTHER OFFENCES	30	33	-3	-9%	13	43%
ROBBERY	13	9	4	44%	1	8%
SEXUAL OFFENCES	44	28	16	57%	4	9%
THEFT FROM MOTOR VEHICLES	123	172	-49	-28%	2	2%
THEFT/HANDLING	280	310	-30	-10%	39	14%
THEFT OF MOTOR VEHICLES	38	56	-18	-32%	3	8%
VIOLENCE OFFENCES	434	418	16	4%	125	29%
Sum:	1545	1695	-150	-9%	259	17%



Kettering Rural Forum Report 2014-01 to 2015-12

Barton

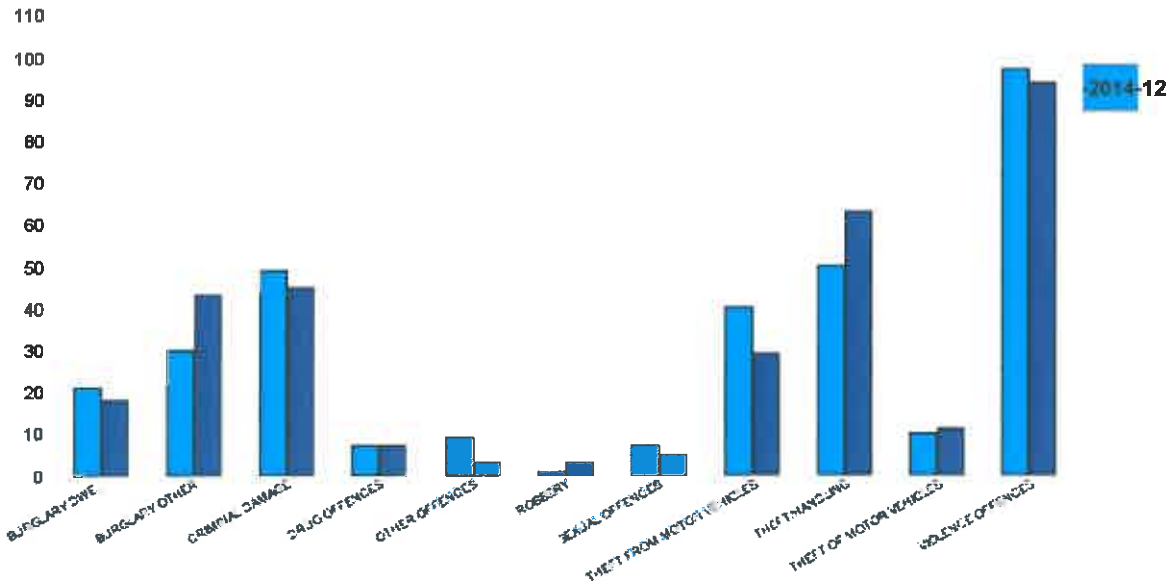
HO Group	No of Crimes Latest 12 Months	No of Crimes Previous 12 Months	+/- Crime	% Change	No of Resolved Outcome Crimes	Detection Rate (Past 12 Months)
BURGLARY DWELLING	25	19	6	32%	0	0%
BURGLARY OTHER	10	16	-6	-38%	0	0%
CRIMINAL DAMAGE	39	29	10	34%	1	3%
DRUG OFFENCES	5	3	2	67%	5	100%
OTHER OFFENCES	0	1	-1	-100%	0	0%
ROBBERY	0	1	-1	-100%	0	0%
SEXUAL OFFENCES	4	1	3	300%	0	0%
THEFT FROM MOTOR VEHICLES	13	14	-1	-7%	0	0%
THEFT/HANDLING	30	34	-4	-12%	2	7%
THEFT OF MOTOR VEHICLES	5	7	-2	-29%	0	0%
VIOLENCE OFFENCES	52	36	16	44%	16	31%
Sum:	183	161	22	14%	24	13%



2015-01-2015-1

Burton Latimer

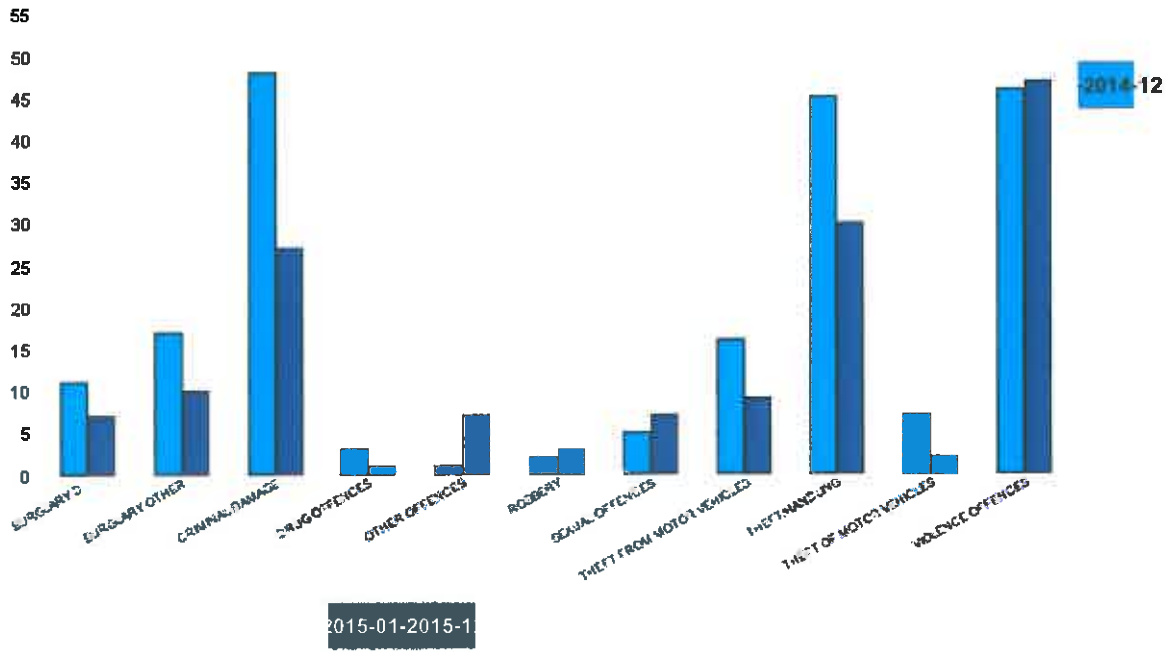
HO Group	No of Crimes Latest 12 Months	No of Crimes Previous 12 Months	+/- Crime	% Change	No of Resolved Outcome Crimes	Detection Rate (Past 12 Months)
BURGLARY DWELLING	18	21	-3	-14%	1	6%
BURGLARY OTHER	43	30	13	43%	0	0%
CRIMINAL DAMAGE	45	49	-4	-8%	5	11%
DRUG OFFENCES	7	7	0	0%	6	86%
OTHER OFFENCES	3	9	-6	-67%	1	33%
ROBBERY	3	1	2	200%	0	0%
SEXUAL OFFENCES	5	7	-2	-29%	0	0%
THEFT FROM MOTOR VEHICLES	29	40	-11	-28%	0	0%
THEFT/HANDLING	63	50	13	26%	15	24%
THEFT OF MOTOR VEHICLES	11	10	1	10%	0	0%
VIOLENCE OFFENCES	94	97	-3	-3%	31	33%
Sum:	321	321	0	0%	59	18%



2015-01-2015-1

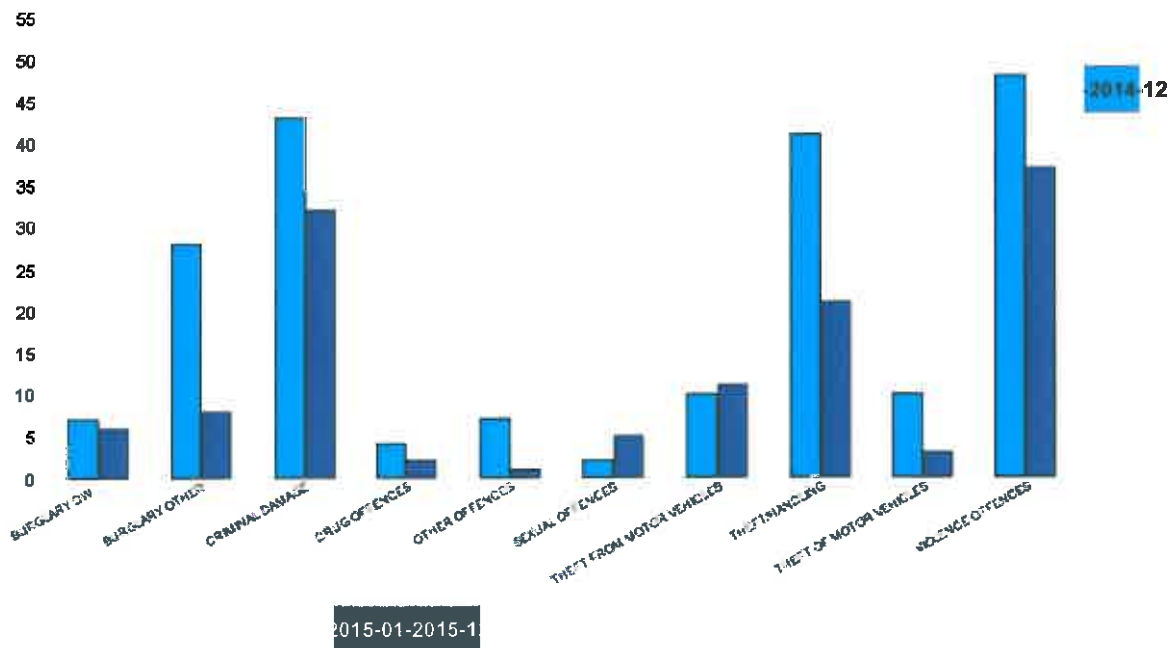
Desborough Loatland

HO Group	No of Crimes Latest 12 Months	No of Crimes Previous 12 Months	+/- Crime	% Change	No of Resolved Outcome Crimes	Detection Rate (Past 12 Months)
BURGLARY DWELLING	7	11	-4	-36%	1	14%
BURGLARY OTHER	10	17	-7	-41%	1	10%
CRIMINAL DAMAGE	27	48	-21	-44%	3	11%
DRUG OFFENCES	1	3	-2	-67%	2	200%
OTHER OFFENCES	7	1	6	600%	3	43%
ROBBERY	3	2	1	50%	1	33%
SEXUAL OFFENCES	7	5	2	40%	1	14%
THEFT FROM MOTOR VEHICLES	9	16	-7	-44%	1	11%
THEFT/HANDLING	30	45	-15	-33%	1	3%
THEFT OF MOTOR VEHICLES	2	7	-5	-71%	0	0%
VIOLENCE OFFENCES	47	46	1	2%	7	15%
Sum:	150	201	-51	-25%	21	14%



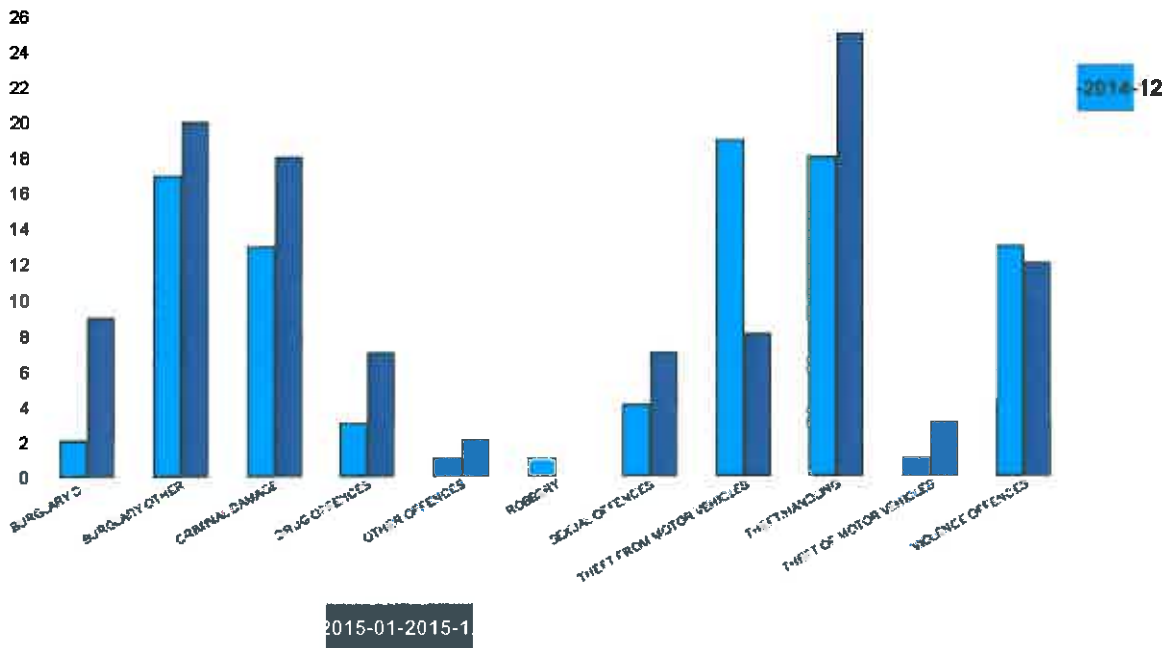
Desborough St Giles

HO Group	No of Crimes Latest 12 Months	No of Crimes Previous 12 Months	+/- Crime	% Change	No of Resolved Outcome Crimes	Detection Rate (Past 12 Months)
BURGLARY DWELLING	6	7	-1	-14%	1	17%
BURGLARY OTHER	8	28	-20	-71%	1	13%
CRIMINAL DAMAGE	32	43	-11	-26%	4	13%
DRUG OFFENCES	2	4	-2	-50%	2	100%
OTHER OFFENCES	1	7	-6	-86%	1	100%
SEXUAL OFFENCES	5	2	3	150%	1	20%
THEFT FROM MOTOR VEHICLES	11	10	1	10%	1	9%
THEFT/HANDLING	21	41	-20	-49%	7	33%
THEFT OF MOTOR VEHICLES	3	10	-7	-70%	0	0%
VIOLENCE OFFENCES	37	48	-11	-23%	11	30%
Sum:	126	200	-74	-37%	29	23%



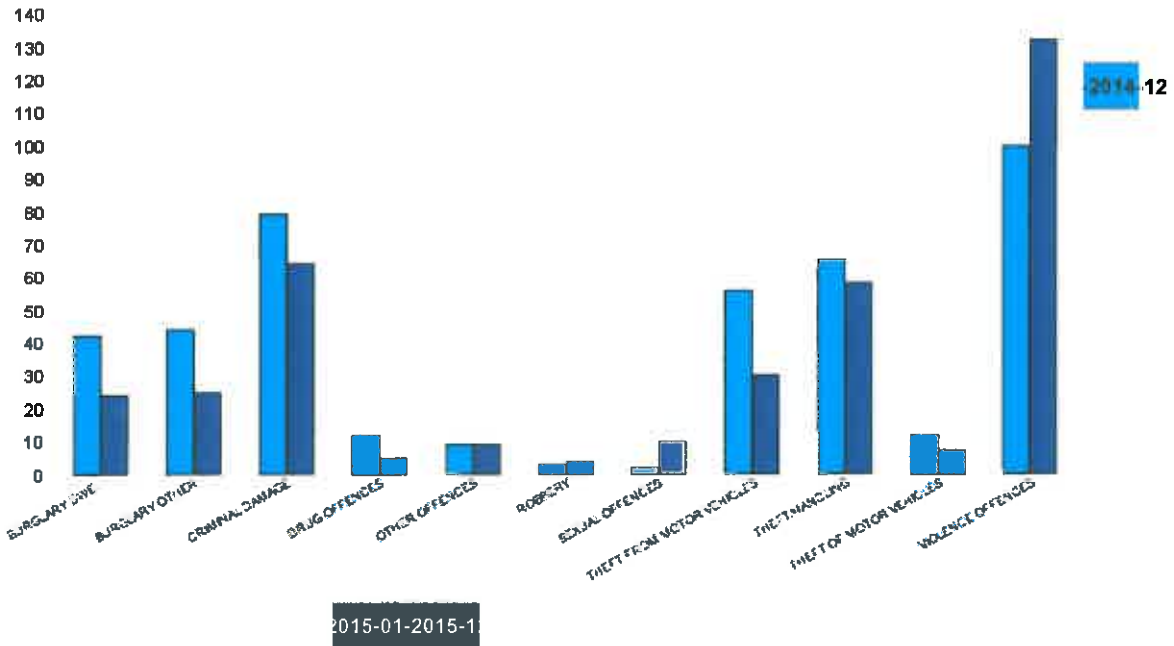
Queen Eleanor and Buccleuch

HO Group	No of Crimes Latest 12 Months	No of Crimes Previous 12 Months	+/- Crime	% Change	No of Resolved Outcome Crimes	Detection Rate (Past 12 Months)
BURGLARY DWELLING	9	2	7	350%	3	33%
BURGLARY OTHER	20	17	3	18%	0	0%
CRIMINAL DAMAGE	18	13	5	38%	2	11%
DRUG OFFENCES	7	3	4	133%	6	86%
OTHER OFFENCES	2	1	1	100%	1	50%
ROBBERY	0	1	-1	-100%	0	0%
SEXUAL OFFENCES	7	4	3	75%	0	0%
THEFT FROM MOTOR VEHICLES	8	19	-11	-58%	0	0%
THEFT/HANDLING	25	18	7	39%	3	12%
THEFT OF MOTOR VEHICLES	3	1	2	200%	1	33%
VIOLENCE OFFENCES	12	13	-1	-8%	5	42%
Sum:	111	92	19	21%	21	19%



Rothwell

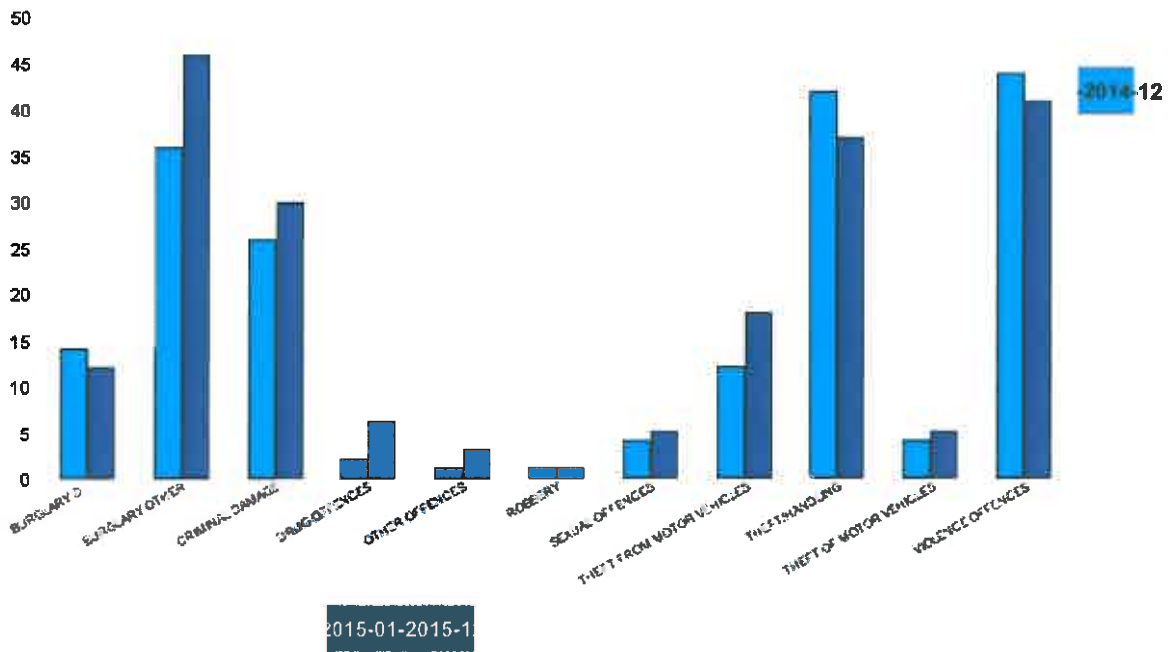
HO Group	No of Crimes Latest 12 Months	No of Crimes Previous 12 Months	+/- Crime	% Change	No of Resolved Outcome Crimes	Detection Rate (Past 12 Months)
BURGLARY DWELLING	24	42	-18	-43%	3	13%
BURGLARY OTHER	25	44	-19	-43%	3	12%
CRIMINAL DAMAGE	64	79	-15	-19%	5	8%
DRUG OFFENCES	5	12	-7	-58%	4	80%
OTHER OFFENCES	9	9	0	0%	5	56%
ROBBERY	4	3	1	33%	0	0%
SEXUAL OFFENCES	10	2	8	400%	2	20%
THEFT FROM MOTOR VEHICLES	30	56	-26	-46%	0	0%
THEFT/HANDLING	58	65	-7	-11%	6	10%
THEFT OF MOTOR VEHICLES	7	12	-5	-42%	0	0%
VIOLENCE OFFENCES	132	100	32	32%	34	26%
Sum:	368	424	-56	-13%	62	17%



Slade

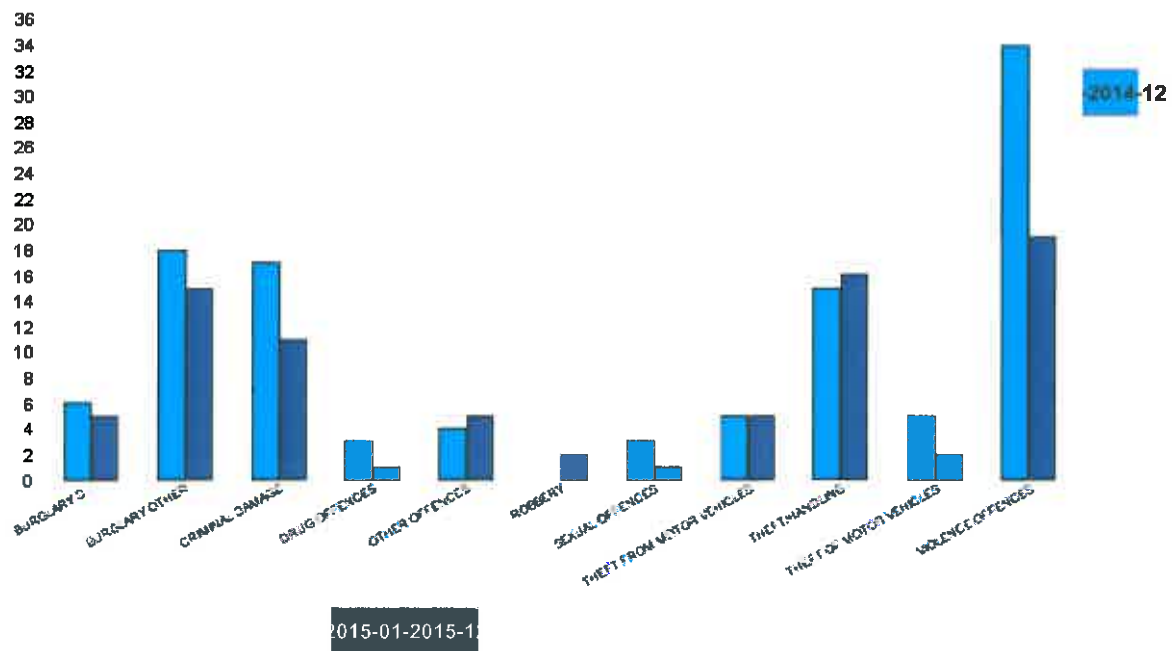
HO Group	No of Crimes Latest 12 Months	No of Crimes Previous 12 Months	+/- Crime	% Change
BURGLARY DWELLING	12	14	-2	-14%
BURGLARY OTHER	46	36	10	28%
CRIMINAL DAMAGE	30	26	4	15%
DRUG OFFENCES	6	2	4	200%
OTHER OFFENCES	3	1	2	200%
ROBBERY	1	1	0	0%
SEXUAL OFFENCES	5	4	1	25%
THEFT FROM MOTOR VEHICLES	18	12	6	50%
THEFT/HANDLING	37	42	-5	-12%
THEFT OF MOTOR VEHICLES	5	4	1	25%
VIOLENCE OFFENCES	41	44	-3	-7%
Sum:	204	186	18	10%

No of Resolved Outcome Crimes	Detection Rate (Past 12 Months)
0	0%
1	2%
2	7%
4	67%
0	0%
0	0%
0	0%
0	0%
5	14%
2	40%
11	27%
25	12%



Welland

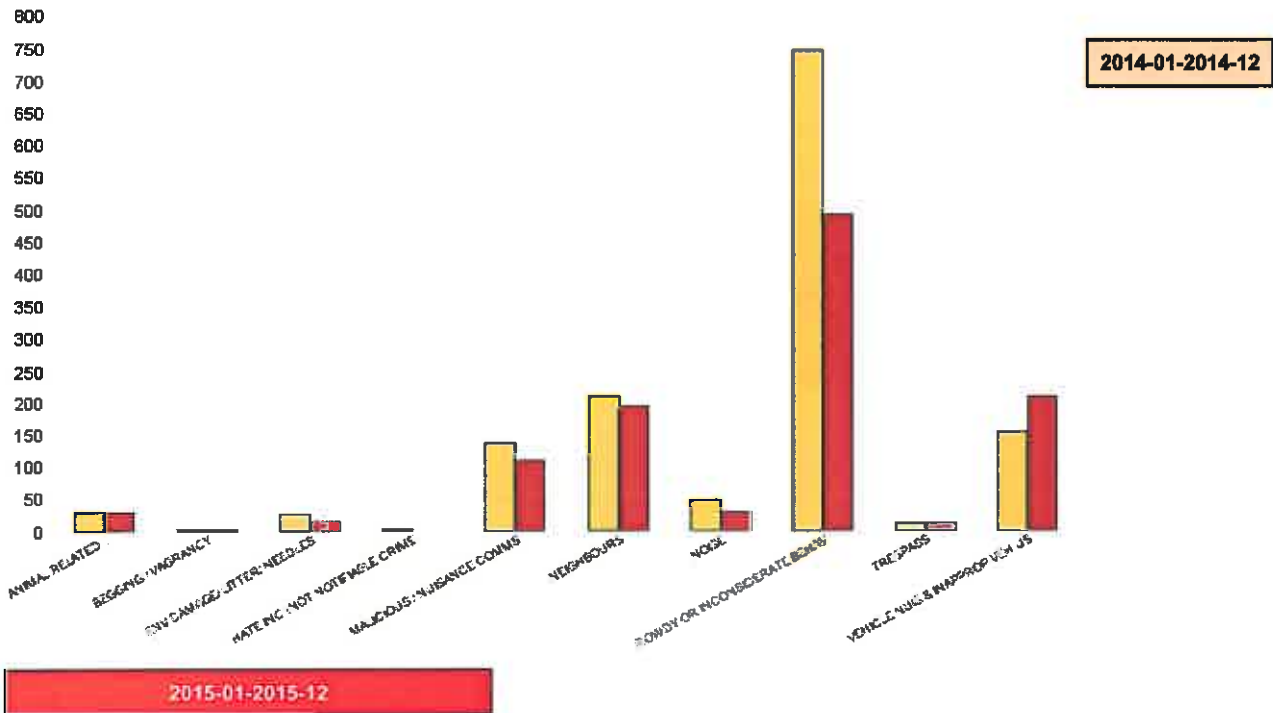
HO Group	No of Crimes Latest 12 Months	No of Crimes Previous 12 Months	+/- Crime	% Change	No of Resolved Outcome Crimes	Detection Rate (Past 12 Months)
BURGLARY DWELLING	5	6	-1	-17%	0	0%
BURGLARY OTHER	15	18	-3	-17%	0	0%
CRIMINAL DAMAGE	11	17	-6	-35%	4	36%
DRUG OFFENCES	1	3	-2	-67%	2	200%
OTHER OFFENCES	5	4	1	25%	2	40%
ROBBERY	2	0	2	0%	0	0%
SEXUAL OFFENCES	1	3	-2	-67%	0	0%
THEFT FROM MOTOR VEHICLES	5	5	0	0%	0	0%
THEFT/HANDLING	16	15	1	7%	0	0%
THEFT OF MOTOR VEHICLES	2	5	-3	-60%	0	0%
VIOLENCE OFFENCES	19	34	-15	-44%	10	53%
Sum:	82	110	-28	-25%	18	22%



Kettering Rural Forum Report 2014-01 to 2015-12

Kettering Rural SCT - ASB

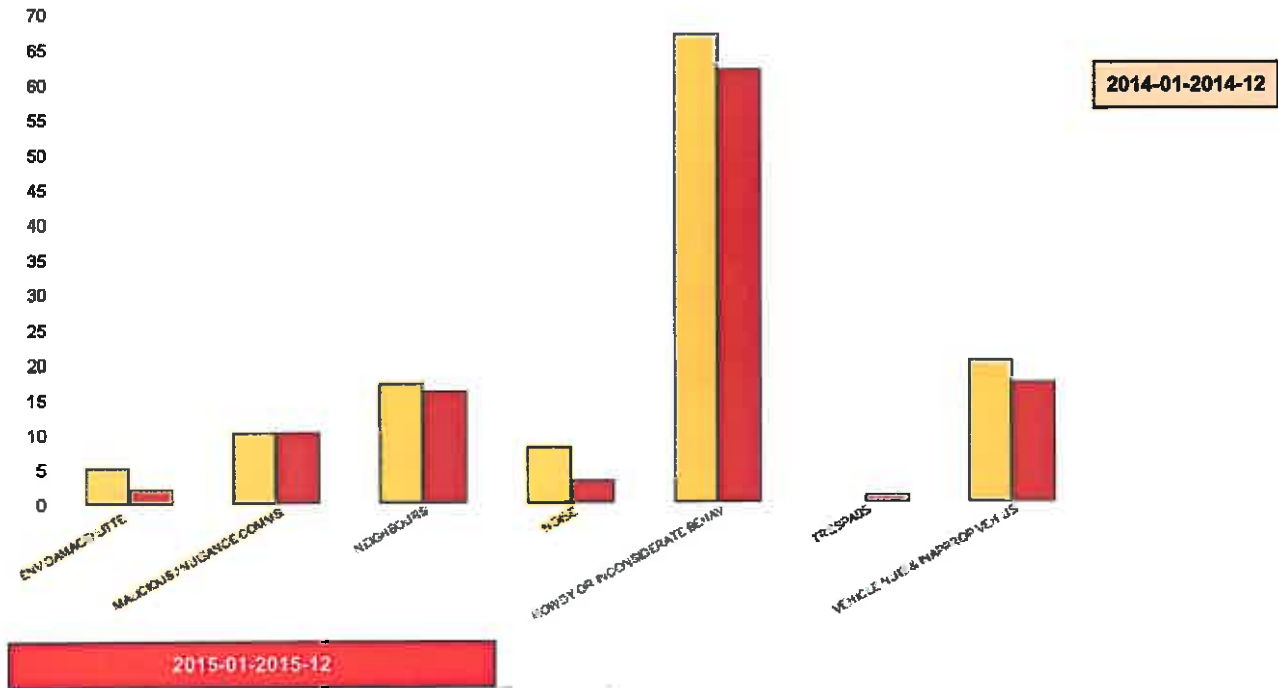
NSIR Closing Cat. 1 Desc	No of Incidents Latest 12 Months	No of Incidents Previous 12 Months	+/- Incidents	% Change Incidents
ANIMAL RELATED INC ANTI-SOCIAL	29	30	-1	-3%
BEGGING / VAGRANCY	3	2	1	50%
ENV.DAMAGE/ LITTER/ NEEDLES	14	27	-13	-48%
HATE INC (NOT NOTIFIABLE CRIME)	0	2	-2	-100%
MALICIOUS / NUISANCE COMMS	108	137	-29	-21%
NEIGHBOURS	194	207	-13	-6%
NOISE	30	47	-17	-36%
ROWDY OR INCONSIDERATE BEHAV	491	745	-254	-34%
TRESPASS	13	13	0	0%
VEHICLE NUIS & INAPPROP VEH US	207	155	52	34%
Sum:	1089	1365	-276	-20%



Kettering Rural Forum Report 2014-01 to 2015-12

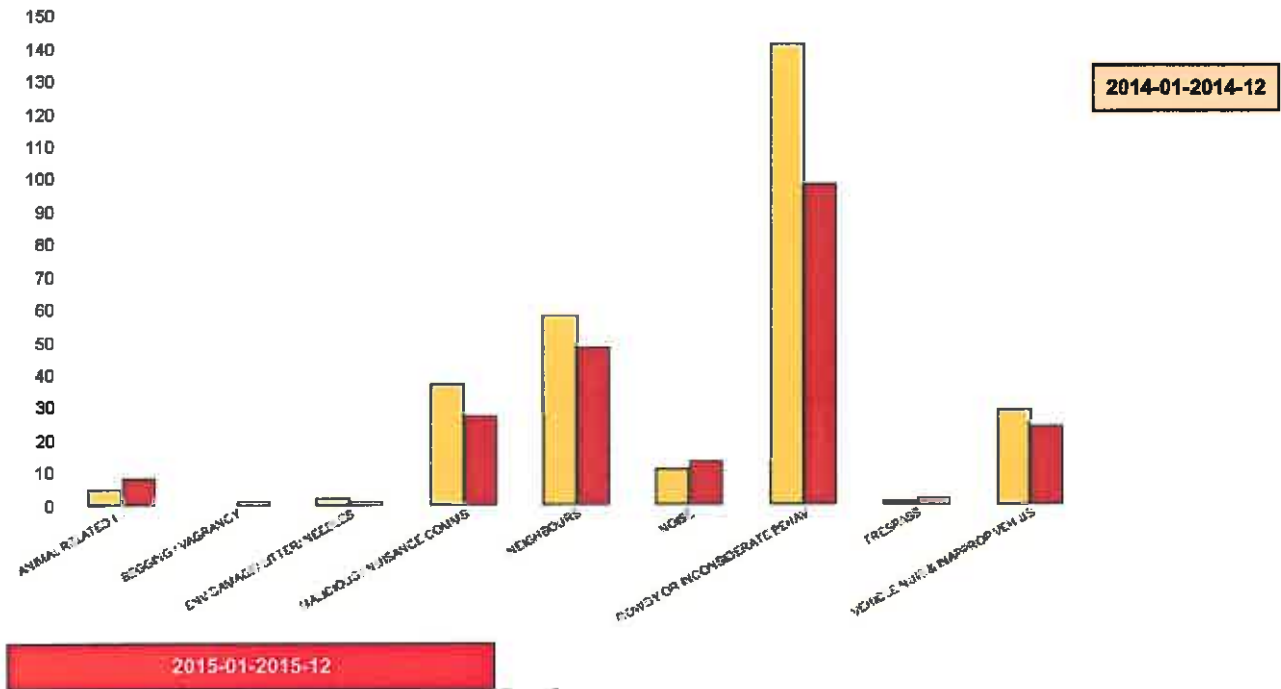
Barton

NSIR Closing Cat. 1 Desc	No of Incidents Latest 12 Months	No of Incidents Previous 12 Months	+/- Incidents	% Change Incidents
ENV.DAMAGE/ LITTER/ NEEDLES	2	5	-3	-60%
MALICIOUS / NUISANCE COMMS	10	10	0	0%
NEIGHBOURS	16	17	-1	-6%
NOISE	3	8	-5	-63%
ROWDY OR INCONSIDERATE BEHAV	62	67	-5	-7%
TRESPASS	1	0	1	0%
VEHICLE NUIS & INAPPROP VEH US	17	20	-3	-15%
Sum:	111	127	-16	-13%



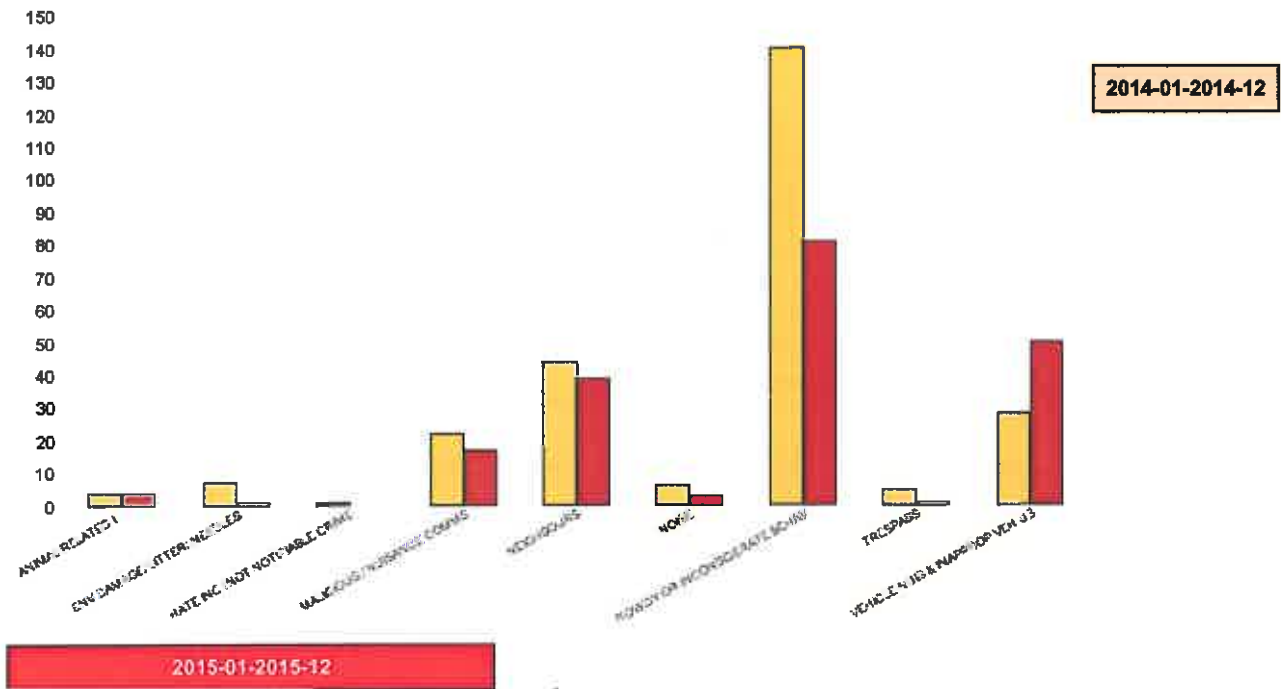
Burton Lat

NSIR Closing Cat. 1 Desc	No of Incidents Latest 12 Months	No of Incidents Previous 12 Months	+/- Incidents	% Change Incidents
ANIMAL RELATED INC ANTI-SOCIAL	8	5	3	60%
BEGGING / VAGRANCY	1	0	1	0%
ENV.DAMAGE/ LITTER/ NEEDLES	1	2	-1	-50%
MALICIOUS / NUISANCE COMMS	27	37	-10	-27%
NEIGHBOURS	48	58	-10	-17%
NOISE	13	11	2	18%
ROWDY OR INCONSIDERATE BEHAV	98	141	-43	-30%
TRESPASS	2	1	1	100%
VEHICLE NUIS & INAPPROP VEH US	24	29	-5	-17%
Sum:	222	284	-62	-22%



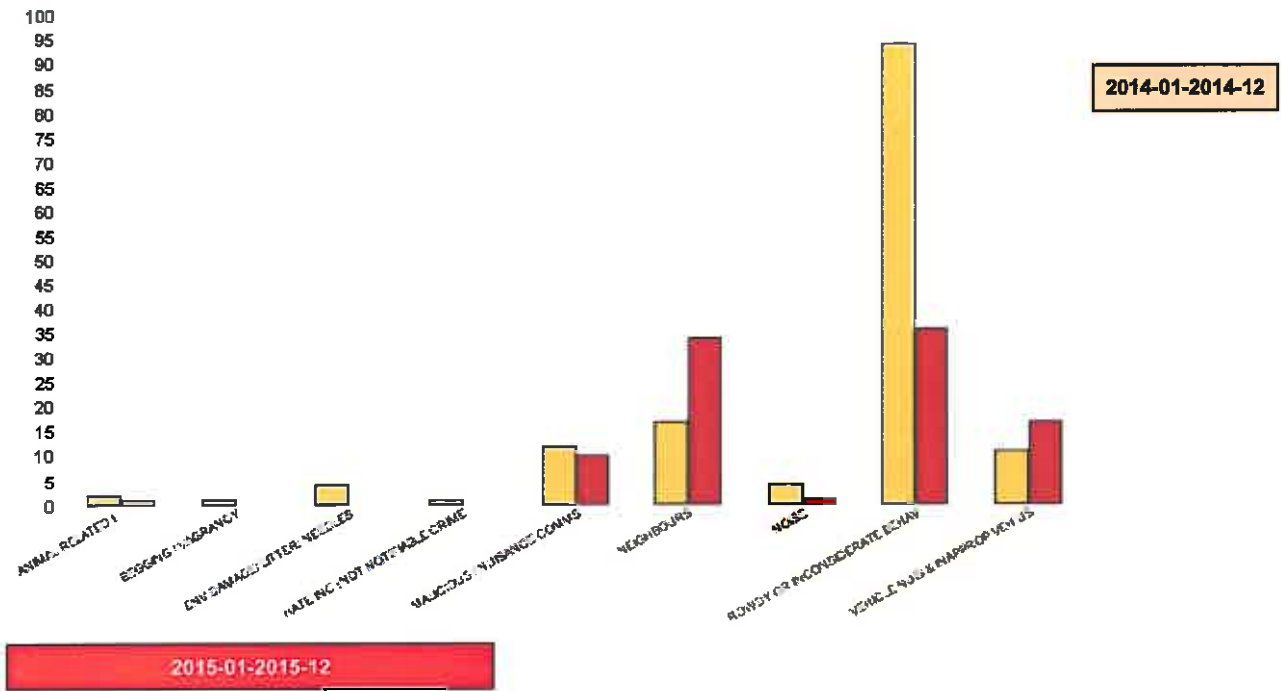
Desborough

NSIR Closing Cat. 1 Desc	No of Incidents Latest 12 Months	No of Incidents Previous 12 Months	+/- Incidents	% Change Incidents
ANIMAL RELATED INC ANTI-SOCIAL	4	4	0	0%
ENV.DAMAGE/ LITTER/ NEEDLES	1	7	-6	-86%
HATE INC (NOT NOTIFIABLE CRIME	0	1	-1	-100%
MALICIOUS / NUISANCE COMMS	17	22	-5	-23%
NEIGHBOURS	39	44	-5	-11%
NOISE	3	6	-3	-50%
ROWDY OR INCONSIDERATE BEHAV	81	140	-59	-42%
TRESPASS	1	5	-4	-80%
VEHICLE NUIS & INAPPROP VEH US	50	26	22	79%
Sum:	196	257	-61	-24%



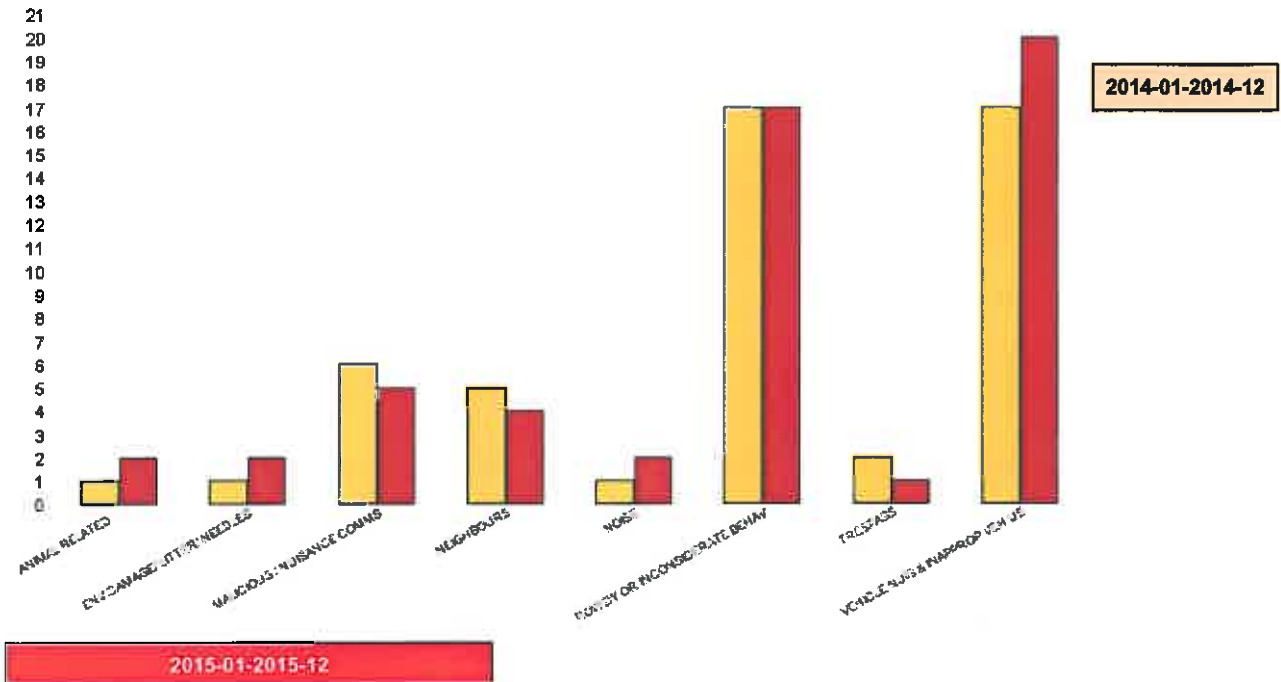
Desboroug

NSIR Closing Cat. 1 Desc	No of Incidents Latest 12 Months	No of Incidents Previous 12 Months	+/- Incidents	% Change Incidents
ANIMAL RELATED INC ANTI-SOCIAL	1	2	-1	-50%
BEGGING / VAGRANCY	0	1	-1	-100%
ENV.DAMAGE/ LITTER/ NEEDLES	0	4	-4	-100%
HATE INC (NOT NOTIFIABLE CRIME	0	1	-1	-100%
MALICIOUS / NUISANCE COMMS	10	12	-2	-17%
NEIGHBOURS	34	17	17	100%
NOISE	1	4	-3	-75%
ROWDY OR INCONSIDERATE BEHAV	38	94	-58	-82%
VEHICLE NUIS & INAPPROP VEH US	17	11	6	55%
Sum:	99	146	-47	-32%



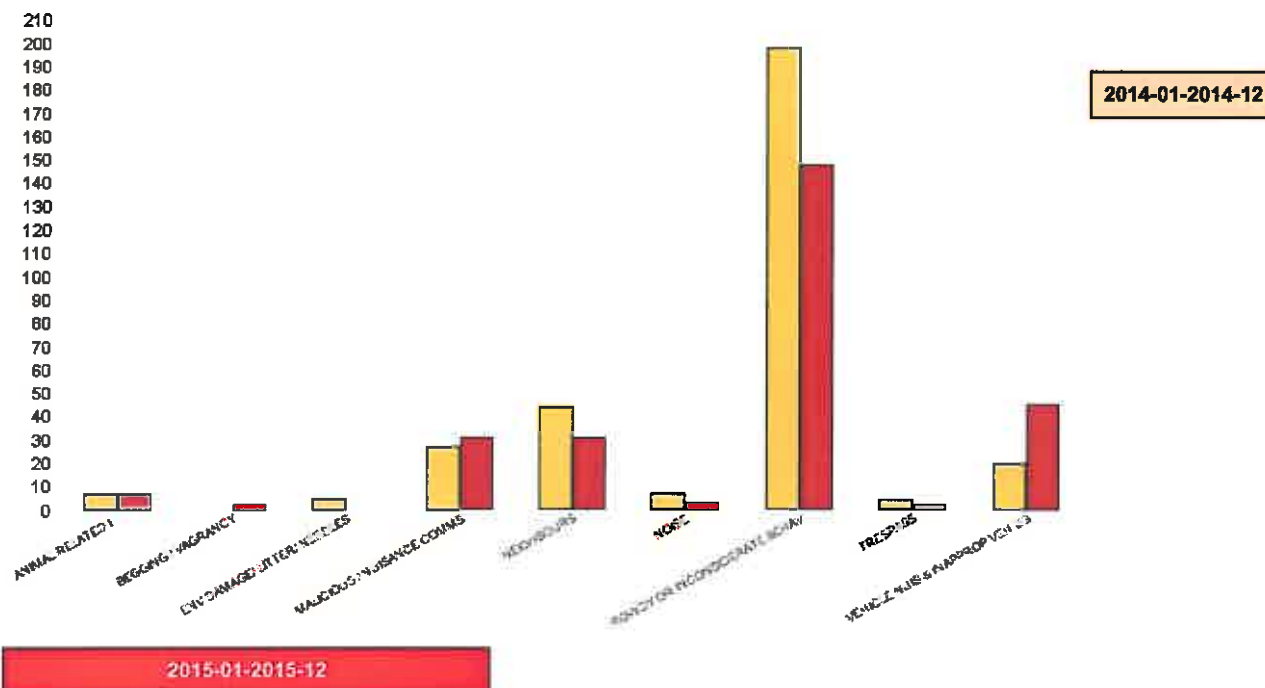
Queen Eleanor and Buccleuch

NSIR Closing Cat. 1 Desc	No of Incidents Latest 12 Months	No of Incidents Previous 12 Months	+/- Incidents	% Change Incidents
ANIMAL RELATED INC ANTI-SOCIAL	2	1	1	100%
ENV.DAMAGE/ LITTER/ NEEDLES	2	1	1	100%
MALICIOUS / NUISANCE COMMS	5	6	-1	-17%
NEIGHBOURS	4	5	-1	-20%
NOISE	2	1	1	100%
ROWDY OR INCONSIDERATE BEHAV	17	17	0	0%
TRESPASS	1	2	-1	-50%
VEHICLE NUIS & INAPPROP VEH US	20	17	3	18%
Sum:	53	50	3	6%



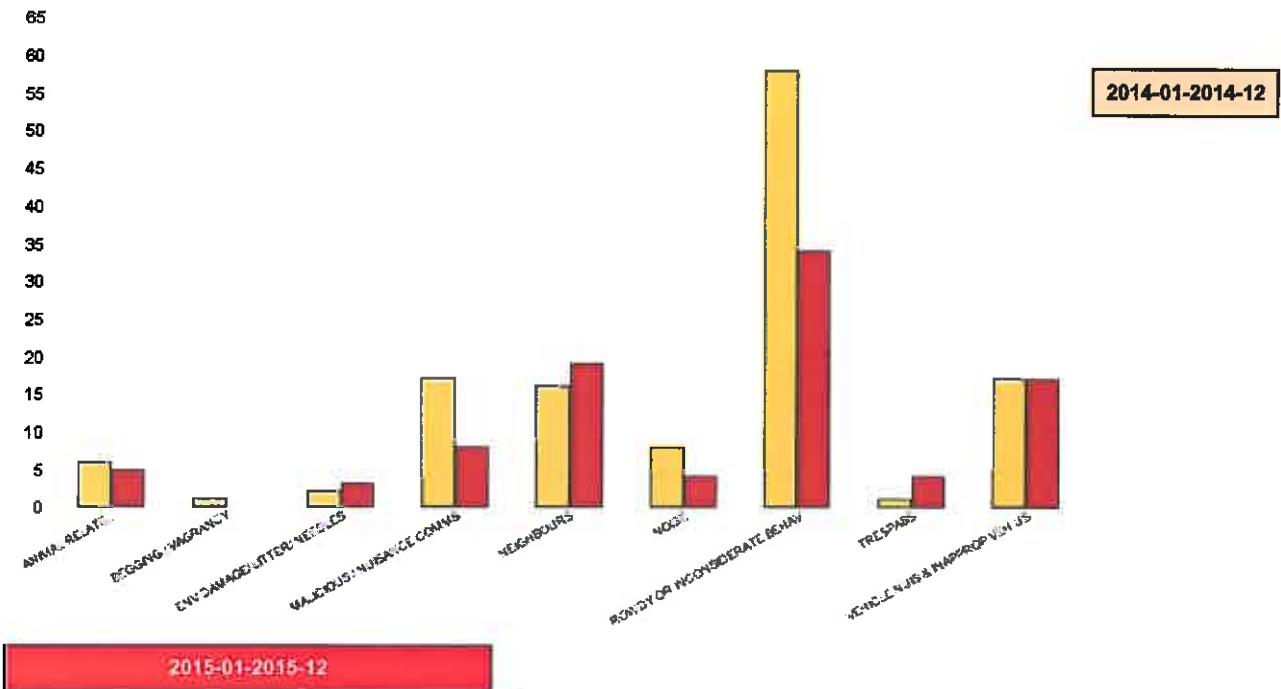
Rothwell

NSIR Closing Cat. 1 Desc	No of Incidents Latest 12 Months	No of Incidents Previous 12 Months	+/- Incidents	% Change Incidents
ANIMAL RELATED INC ANTI-SOCIAL	7	7	0	0%
BEGGING / VAGRANCY	2	0	2	0%
ENV.DAMAGE/ LITTER/ NEEDLES	0	5	-5	-100%
MALICIOUS / NUISANCE COMMS	31	27	4	15%
NEIGHBOURS	31	44	-13	-30%
NOISE	3	7	-4	-57%
ROWDY OR INCONSIDERATE BEHAV	148	198	-50	-25%
TRESPASS	2	4	-2	-50%
VEHICLE NUIS & INAPPROP VEH US	45	20	25	125%
Sum:	269	312	-43	-14%



Slade

NSIR Closing Cat. 1 Desc	No of Incidents Latest 12 Months	No of Incidents Previous 12 Months	+/- Incidents	% Change Incidents
ANIMAL RELATED INC ANTI-SOCIAL	5	6	-1	-17%
BEGGING / VAGRANCY	0	1	-1	-100%
ENV.DAMAGE/ LITTER/ NEEDLES	3	2	1	50%
MALICIOUS / NUISANCE COMMS	8	17	-9	-53%
NEIGHBOURS	19	16	3	19%
NOISE	4	8	-4	-50%
ROWDY OR INCONSIDERATE BEHAV	34	58	-24	-41%
TRESPASS	4	1	3	300%
VEHICLE NUIS & INAPPROP VEH US	17	17	0	0%
Sum:	94	126	-32	-25%



Welland

NSIR Closing Cat. 1 Desc	No of Incidents Latest 12 Months	No of Incidents Previous 12 Months	+/- Incidents	% Change Incidents
ANIMAL RELATED INC ANTI-SOCIAL	2	5	-3	-60%
ENV.DAMAGE/ LITTER/ NEEDLES	5	1	4	400%
MALICIOUS / NUISANCE COMMS	0	6	-6	-100%
NEIGHBOURS	3	6	-3	-50%
NOISE	1	2	-1	-50%
ROWDY OR INCONSIDERATE BEHAV	15	30	-15	-50%
TRESPASS	2	0	2	0%
VEHICLE NUIS & INAPPROP VEH US	17	13	4	31%
Sum:	45	63	-18	-29%

