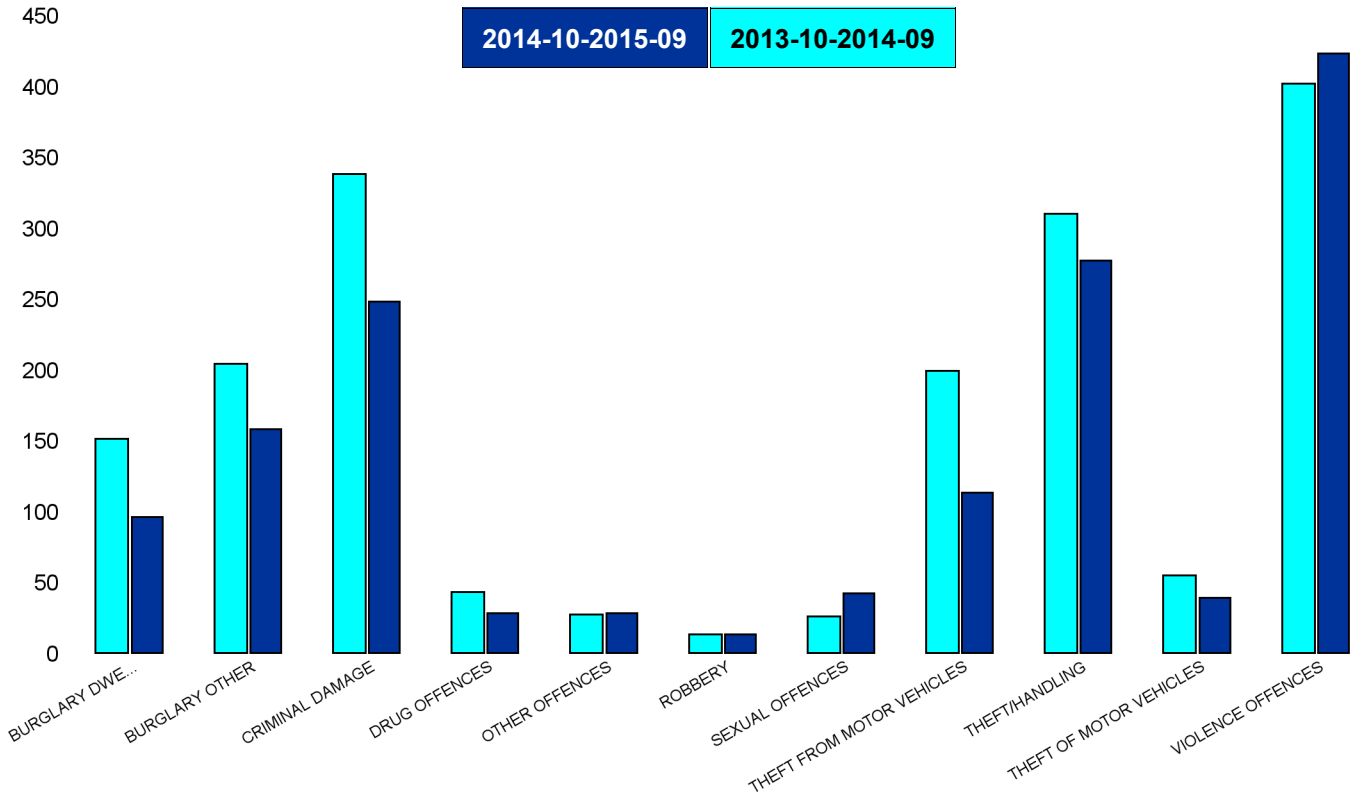


## Kettering Rural Forum Report 2013-10 to 2015-09

### Kettering Rural SCT - Crime

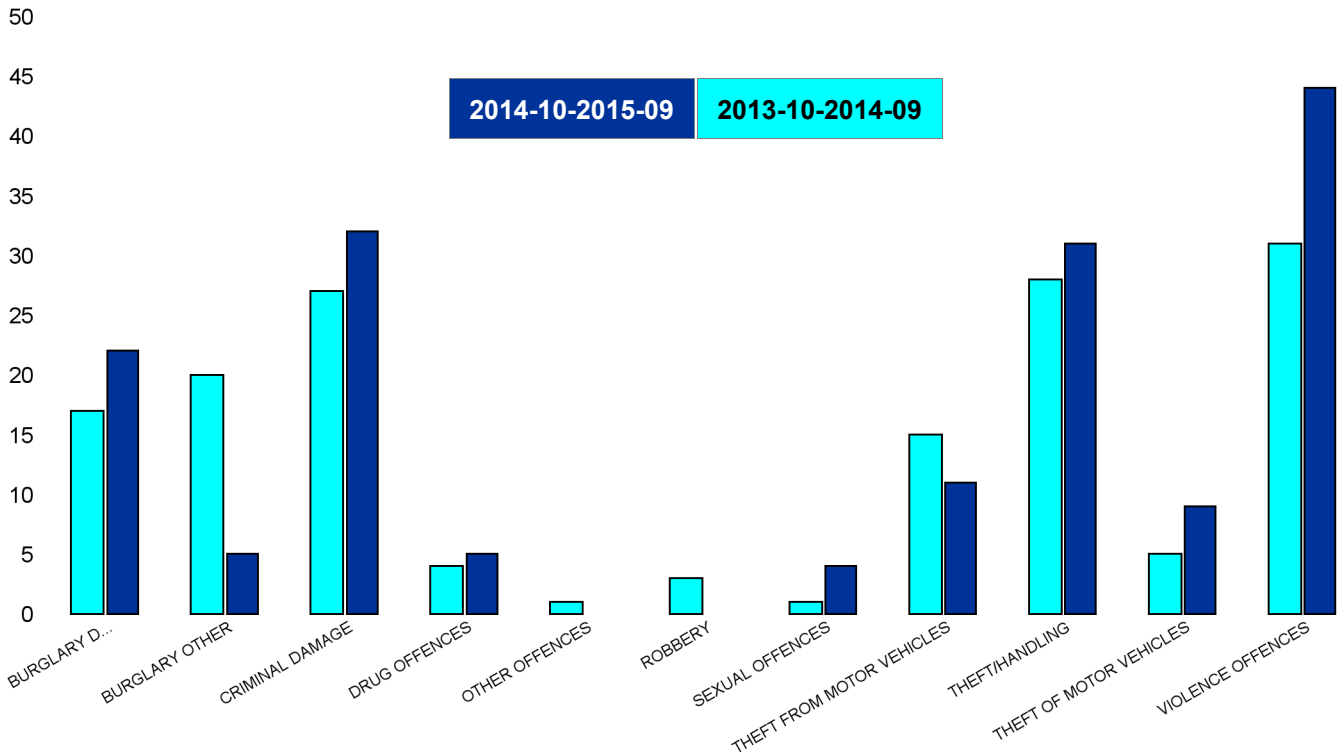
HO Group	No of Crimes Latest 12 Months	No of Crimes Previous 12 Months	+/- Crime	% Change	No of Resolved Outcome Crimes	Detection Rate (Past 12 Months)
BURGLARY DWELLING	96	151	-55	-36%	9	9%
BURGLARY OTHER	158	204	-46	-23%	6	4%
CRIMINAL DAMAGE	248	338	-90	-27%	29	12%
DRUG OFFENCES	28	43	-15	-35%	26	93%
OTHER OFFENCES	28	27	1	4%	15	54%
ROBBERY	13	13	0	0%	1	8%
SEXUAL OFFENCES	42	26	16	62%	2	5%
THEFT FROM MOTOR VEHICLES	113	199	-86	-43%	2	2%
THEFT/HANDLING	277	310	-33	-11%	46	17%
THEFT OF MOTOR VEHICLES	39	55	-16	-29%	7	18%
VIOLENCE OFFENCES	423	402	21	5%	121	29%
<b>Sum:</b>	<b>1465</b>	<b>1768</b>	<b>-303</b>	<b>-17%</b>	<b>264</b>	<b>18%</b>



## Kettering Rural Forum Report 2013-10 to 2015-09

### Barton

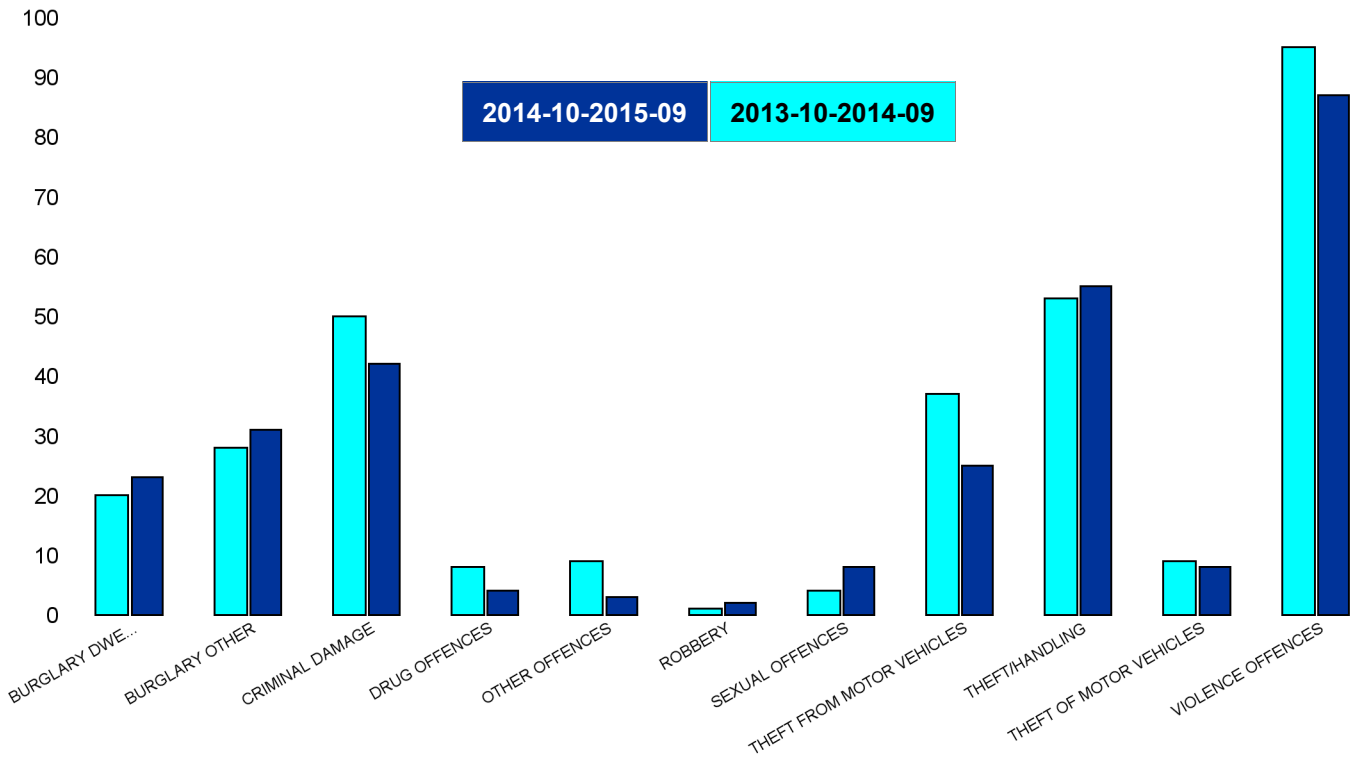
HO Group	No of Crimes Latest 12 Months	No of Crimes Previous 12 Months	+/- Crime	% Change	No of Resolved Outcome Crimes	Detection Rate (Past 12 Months)
BURGLARY DWELLING	22	17	5	29%	0	0%
BURGLARY OTHER	5	20	-15	-75%	0	0%
CRIMINAL DAMAGE	32	27	5	19%	2	6%
DRUG OFFENCES	5	4	1	25%	4	80%
OTHER OFFENCES	0	1	-1	-100%	0	0%
ROBBERY	0	3	-3	-100%	0	0%
SEXUAL OFFENCES	4	1	3	300%	0	0%
THEFT FROM MOTOR VEHICLES	11	15	-4	-27%	0	0%
THEFT/HANDLING	31	28	3	11%	5	16%
THEFT OF MOTOR VEHICLES	9	5	4	80%	1	11%
VIOLENCE OFFENCES	44	31	13	42%	14	32%
<b>Sum:</b>	<b>163</b>	<b>152</b>	<b>11</b>	<b>7%</b>	<b>26</b>	<b>16%</b>



## Kettering Rural Forum Report 2013-10 to 2015-09

### Burton Latimer

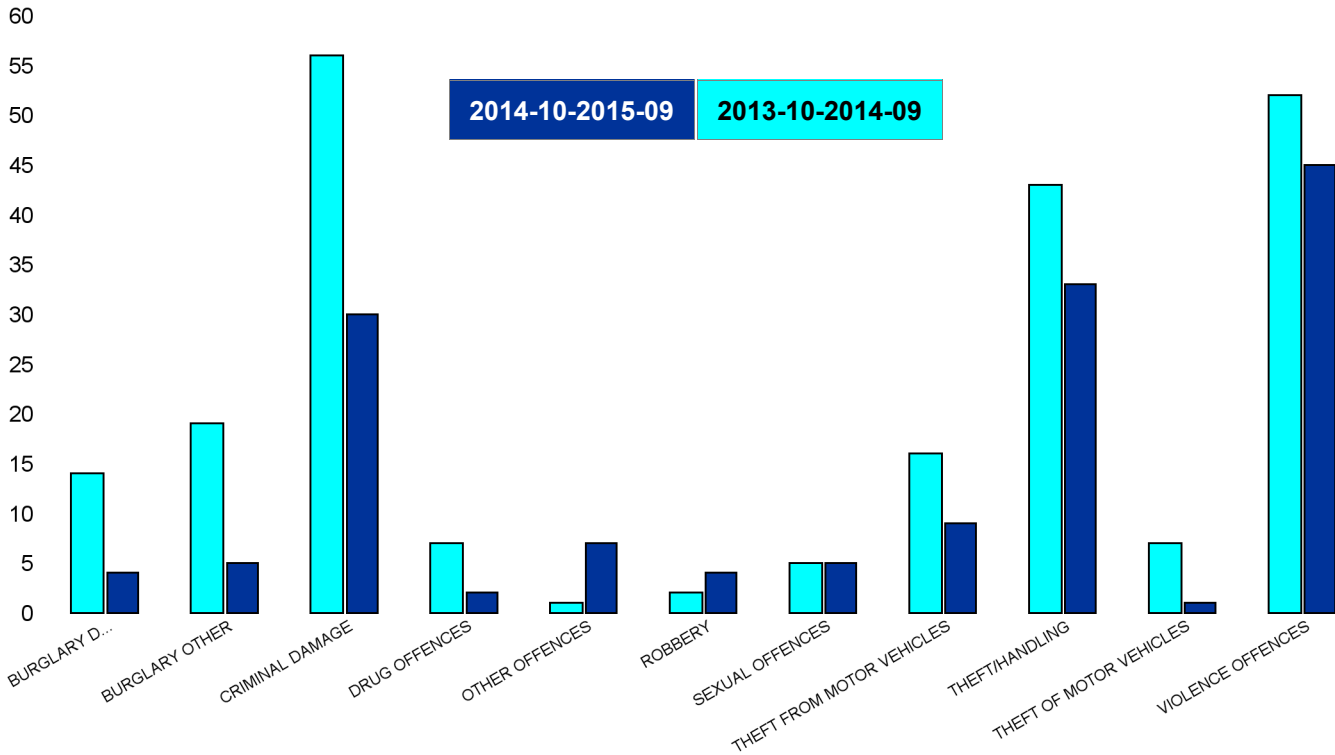
HO Group	No of Crimes Latest 12 Months	No of Crimes Previous 12 Months	+/- Crime	% Change	No of Resolved Outcome Crimes	Detection Rate (Past 12 Months)
BURGLARY DWELLING	23	20	3	15%	1	4%
BURGLARY OTHER	31	28	3	11%	0	0%
CRIMINAL DAMAGE	42	50	-8	-16%	6	14%
DRUG OFFENCES	4	8	-4	-50%	4	100%
OTHER OFFENCES	3	9	-6	-67%	2	67%
ROBBERY	2	1	1	100%	0	0%
SEXUAL OFFENCES	8	4	4	100%	0	0%
THEFT FROM MOTOR VEHICLES	25	37	-12	-32%	0	0%
THEFT/HANDLING	55	53	2	4%	14	25%
THEFT OF MOTOR VEHICLES	8	9	-1	-11%	0	0%
VIOLENCE OFFENCES	87	95	-8	-8%	29	33%
<b>Sum:</b>	<b>288</b>	<b>314</b>	<b>-26</b>	<b>-8%</b>	<b>56</b>	<b>19%</b>



## Kettering Rural Forum Report 2013-10 to 2015-09

### Desborough Loatland

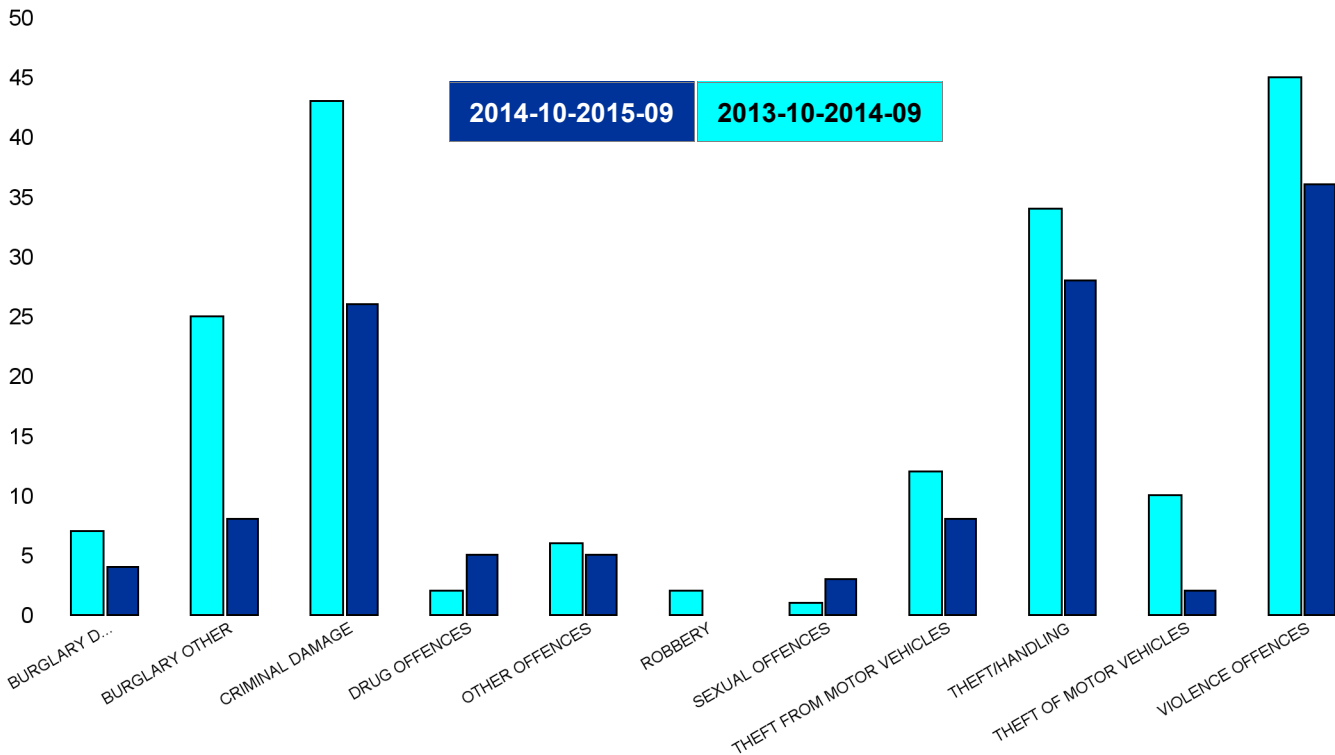
HO Group	No of Crimes Latest 12 Months	No of Crimes Previous 12 Months	+/- Crime	% Change	No of Resolved Outcome Crimes	Detection Rate (Past 12 Months)
BURGLARY DWELLING	4	14	-10	-71%	1	25%
BURGLARY OTHER	5	19	-14	-74%	1	20%
CRIMINAL DAMAGE	30	56	-26	-46%	2	7%
DRUG OFFENCES	2	7	-5	-71%	2	100%
OTHER OFFENCES	7	1	6	600%	1	14%
ROBBERY	4	2	2	100%	1	25%
SEXUAL OFFENCES	5	5	0	0%	1	20%
THEFT FROM MOTOR VEHICLES	9	16	-7	-44%	1	11%
THEFT/HANDLING	33	43	-10	-23%	1	3%
THEFT OF MOTOR VEHICLES	1	7	-6	-86%	0	0%
VIOLENCE OFFENCES	45	52	-7	-13%	8	18%
<b>Sum:</b>	<b>145</b>	<b>222</b>	<b>-77</b>	<b>-35%</b>	<b>19</b>	<b>13%</b>



## Kettering Rural Forum Report 2013-10 to 2015-09

### Desborough St Giles

HO Group	No of Crimes Latest 12 Months	No of Crimes Previous 12 Months	+/- Crime	% Change	No of Resolved Outcome Crimes	Detection Rate (Past 12 Months)
BURGLARY DWELLING	4	7	-3	-43%	1	25%
BURGLARY OTHER	8	25	-17	-68%	2	25%
CRIMINAL DAMAGE	26	43	-17	-40%	3	12%
DRUG OFFENCES	5	2	3	150%	4	80%
OTHER OFFENCES	5	6	-1	-17%	4	80%
ROBBERY	0	2	-2	-100%	0	0%
SEXUAL OFFENCES	3	1	2	200%	0	0%
THEFT FROM MOTOR VEHICLES	8	12	-4	-33%	0	0%
THEFT/HANDLING	28	34	-6	-18%	9	32%
THEFT OF MOTOR VEHICLES	2	10	-8	-80%	0	0%
VIOLENCE OFFENCES	36	45	-9	-20%	11	31%
<b>Sum:</b>	<b>125</b>	<b>187</b>	<b>-62</b>	<b>-33%</b>	<b>34</b>	<b>27%</b>

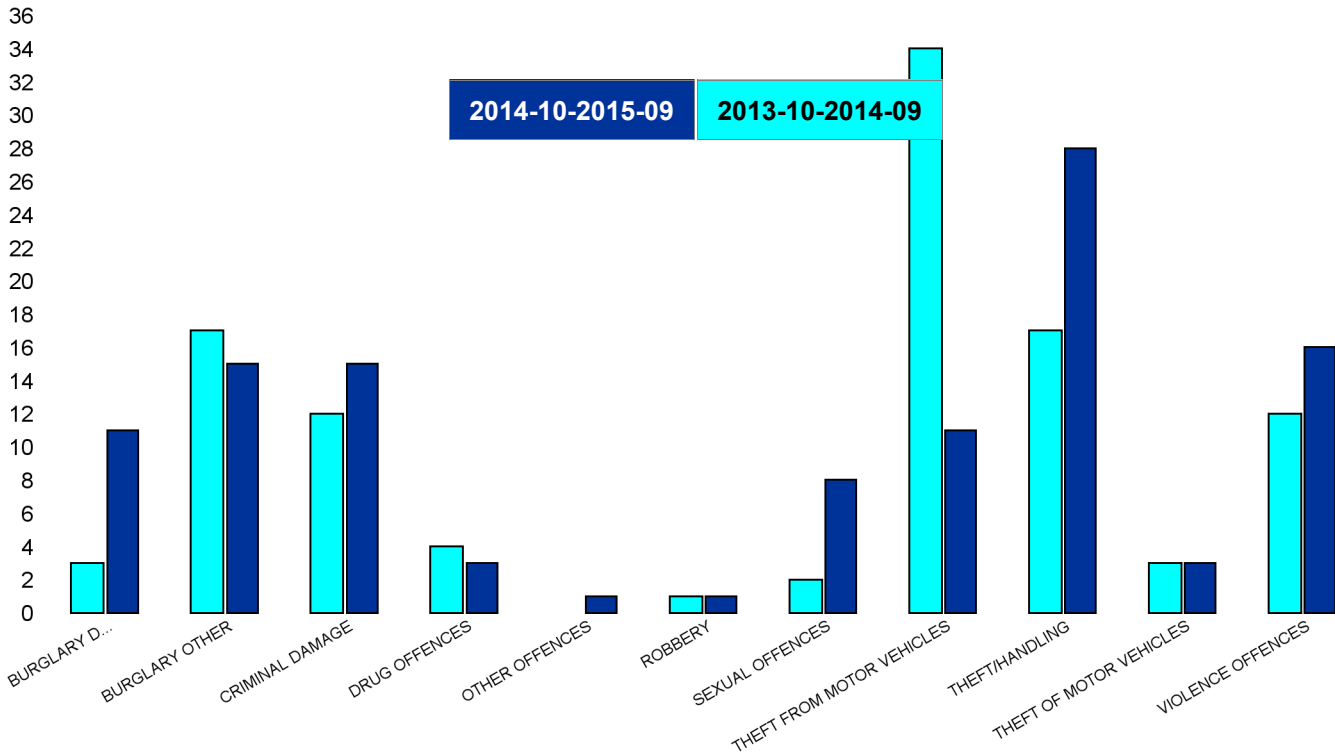


## Kettering Rural Forum Report 2013-10 to 2015-09

### Queen Eleanor and Buccleuch

HO Group	No of Crimes Latest 12 Months	No of Crimes Previous 12 Months	+/- Crime	% Change
BURGLARY DWELLING	11	3	8	267%
BURGLARY OTHER	15	17	-2	-12%
CRIMINAL DAMAGE	15	12	3	25%
DRUG OFFENCES	3	4	-1	-25%
OTHER OFFENCES	1	0	1	0%
ROBBERY	1	1	0	0%
SEXUAL OFFENCES	8	2	6	300%
THEFT FROM MOTOR VEHICLES	11	34	-23	-68%
THEFT/HANDLING	28	17	11	65%
THEFT OF MOTOR VEHICLES	3	3	0	0%
VIOLENCE OFFENCES	16	12	4	33%
<b>Sum:</b>	<b>112</b>	<b>105</b>	<b>7</b>	<b>7%</b>

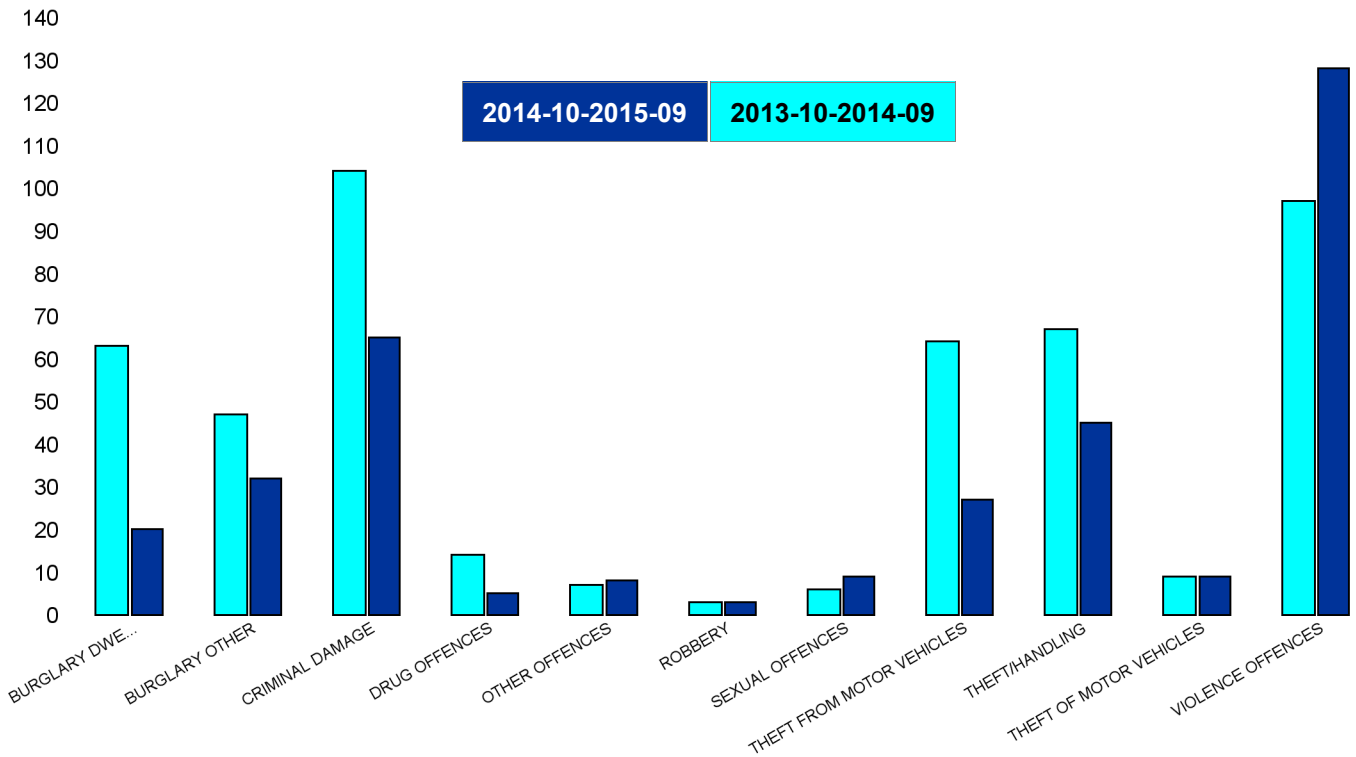
No of Resolved Outcome Crimes	Detection Rate (Past 12 Months)
2	18%
0	0%
2	13%
2	67%
1	100%
0	0%
0	0%
0	0%
2	7%
1	33%
5	31%
<b>15</b>	<b>13%</b>



## Kettering Rural Forum Report 2013-10 to 2015-09

### Rothwell

HO Group	No of Crimes Latest 12 Months	No of Crimes Previous 12 Months	+/- Crime	% Change	No of Resolved Outcome Crimes	Detection Rate (Past 12 Months)
BURGLARY DWELLING	20	63	-43	-68%	3	15%
BURGLARY OTHER	32	47	-15	-32%	3	9%
CRIMINAL DAMAGE	65	104	-39	-38%	9	14%
DRUG OFFENCES	5	14	-9	-64%	6	120%
OTHER OFFENCES	8	7	1	14%	6	75%
ROBBERY	3	3	0	0%	0	0%
SEXUAL OFFENCES	9	6	3	50%	1	11%
THEFT FROM MOTOR VEHICLES	27	64	-37	-58%	0	0%
THEFT/HANDLING	45	67	-22	-33%	11	24%
THEFT OF MOTOR VEHICLES	9	9	0	0%	3	33%
VIOLENCE OFFENCES	128	97	31	32%	32	25%
<b>Sum:</b>	<b>351</b>	<b>481</b>	<b>-130</b>	<b>-27%</b>	<b>74</b>	<b>21%</b>

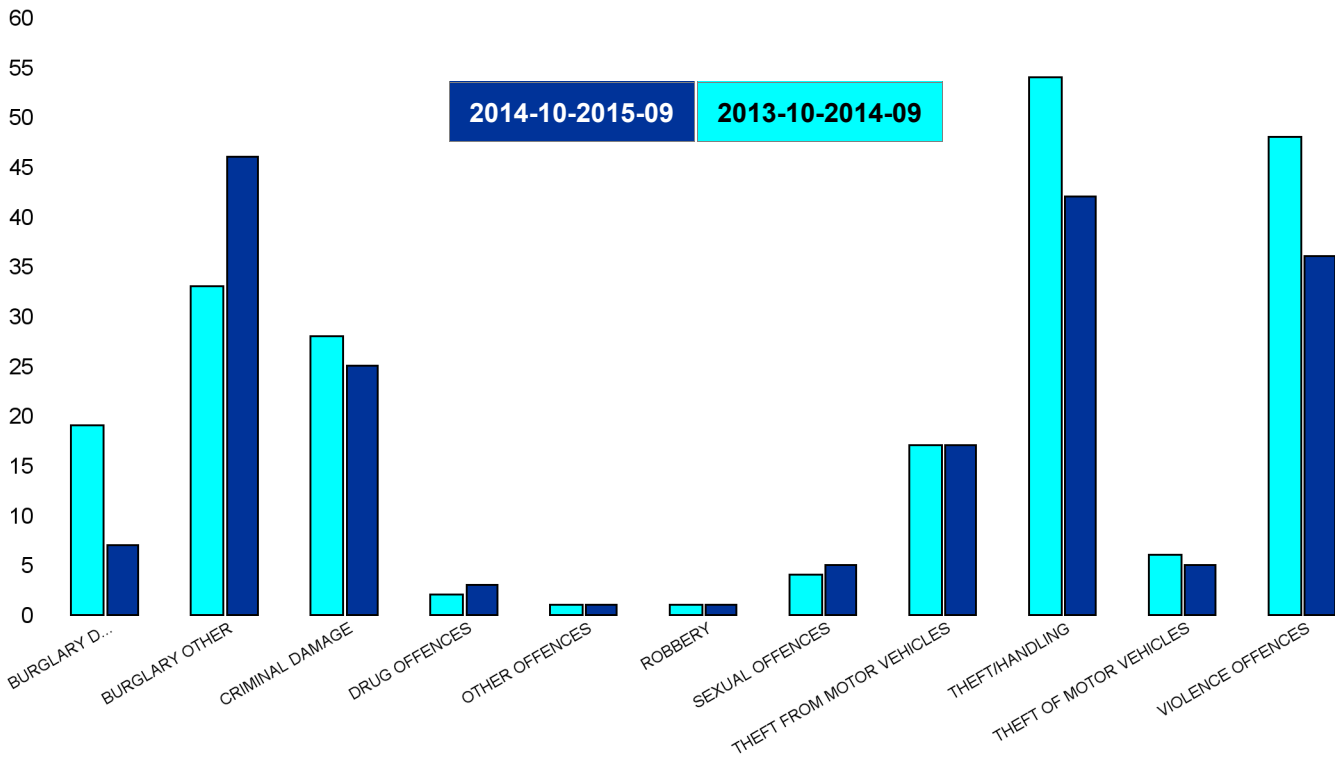


## Kettering Rural Forum Report 2013-10 to 2015-09

### Slade

HO Group	No of Crimes Latest 12 Months	No of Crimes Previous 12 Months	+/- Crime	% Change
BURGLARY DWELLING	7	19	-12	-63%
BURGLARY OTHER	46	33	13	39%
CRIMINAL DAMAGE	25	28	-3	-11%
DRUG OFFENCES	3	2	1	50%
OTHER OFFENCES	1	1	0	0%
ROBBERY	1	1	0	0%
SEXUAL OFFENCES	5	4	1	25%
THEFT FROM MOTOR VEHICLES	17	17	0	0%
THEFT/HANDLING	42	54	-12	-22%
THEFT OF MOTOR VEHICLES	5	6	-1	-17%
VIOLENCE OFFENCES	36	48	-12	-25%
<b>Sum:</b>	<b>188</b>	<b>213</b>	<b>-25</b>	<b>-12%</b>

No of Resolved Outcome Crimes	Detection Rate (Past 12 Months)
0	0%
0	0%
1	4%
2	67%
0	0%
0	0%
0	0%
1	6%
4	10%
2	40%
6	17%
<b>16</b>	<b>9%</b>



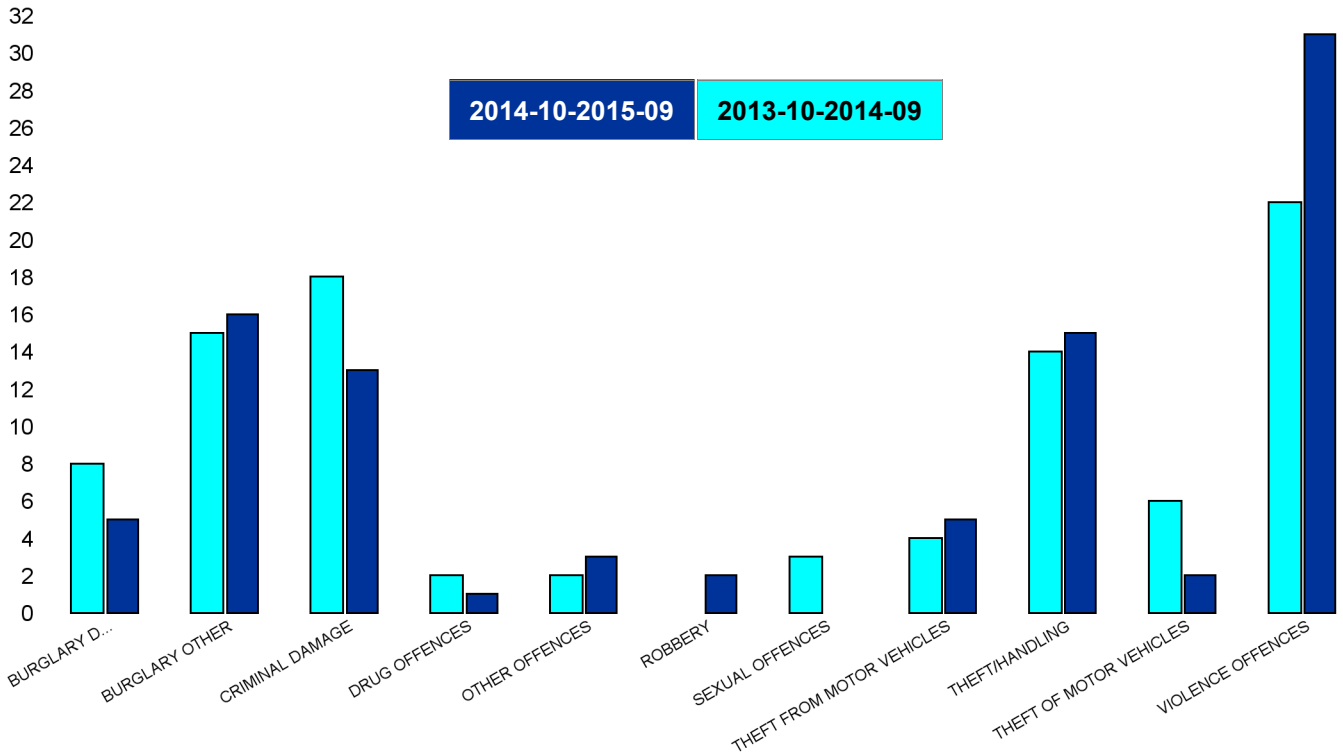


## Kettering Rural Forum Report 2013-10 to 2015-09

### Welland

HO Group	No of Crimes Latest 12 Months	No of Crimes Previous 12 Months	+/- Crime	% Change
BURGLARY DWELLING	5	8	-3	-38%
BURGLARY OTHER	16	15	1	7%
CRIMINAL DAMAGE	13	18	-5	-28%
DRUG OFFENCES	1	2	-1	-50%
OTHER OFFENCES	3	2	1	50%
ROBBERY	2	0	2	0%
SEXUAL OFFENCES	0	3	-3	-100%
THEFT FROM MOTOR VEHICLES	5	4	1	25%
THEFT/HANDLING	15	14	1	7%
THEFT OF MOTOR VEHICLES	2	6	-4	-67%
VIOLENCE OFFENCES	31	22	9	41%
<b>Sum:</b>	<b>93</b>	<b>94</b>	<b>-1</b>	<b>-1%</b>

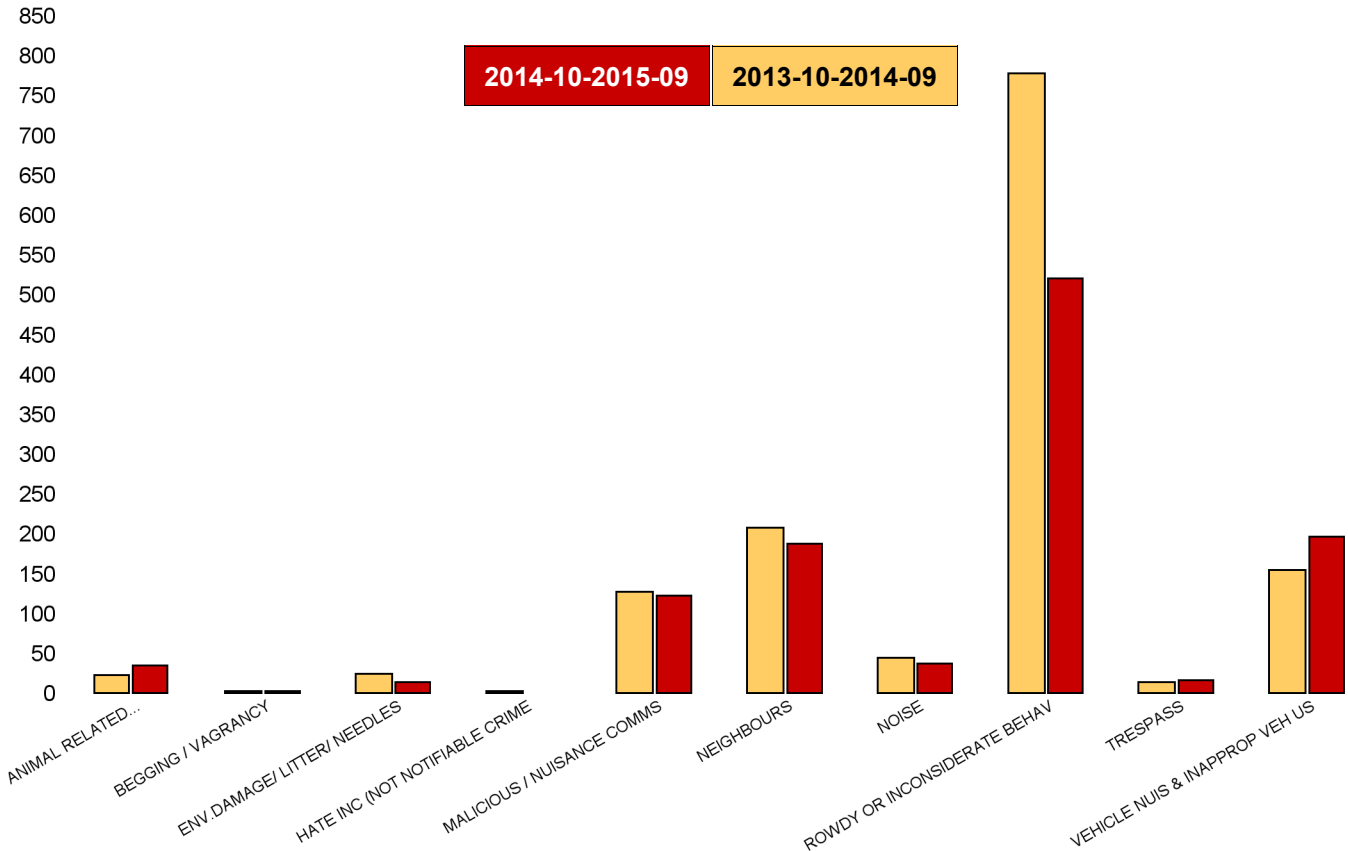
No of Resolved Outcome Crimes	Detection Rate (Past 12 Months)
1	20%
0	0%
4	31%
2	200%
1	33%
0	0%
0	0%
0	0%
0	0%
16	52%
<b>24</b>	<b>26%</b>



# Kettering Rural Forum Report 2013-10 to 2015-09

## Kettering Rural SCT - ASB

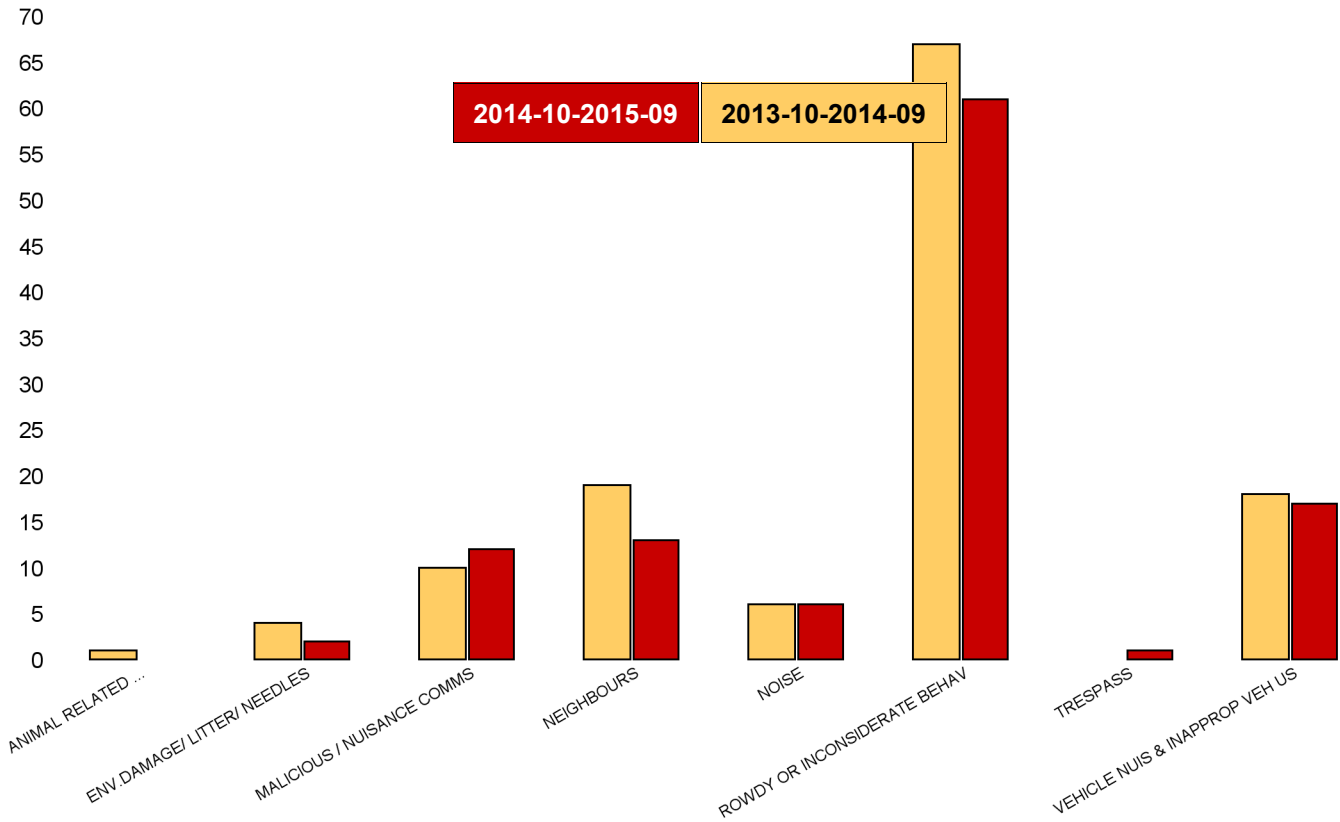
NSIR Closing Cat. 1 Desc	No of Incidents Latest 12 Months	No of Incidents Previous 12 Months	+/- Incidents	% Change Incidents
ANIMAL RELATED INC ANTI-SOCIAL	34	22	12	55%
BEGGING / VAGRANCY	2	2	0	0%
ENV.DAMAGE/ LITTER/ NEEDLES	13	24	-11	-46%
HATE INC (NOT NOTIFIABLE CRIME)	0	2	-2	-100%
MALICIOUS / NUISANCE COMMS	122	127	-5	-4%
NEIGHBOURS	187	207	-20	-10%
NOISE	37	44	-7	-16%
ROWDY OR INCONSIDERATE BEHAV	520	777	-257	-33%
TRESPASS	16	13	3	23%
VEHICLE NUIS & INAPPROP VEH US	196	154	42	27%
<b>Sum:</b>	<b>1127</b>	<b>1372</b>	<b>-245</b>	<b>-18%</b>



## Kettering Rural Forum Report 2013-10 to 2015-09

### Barton

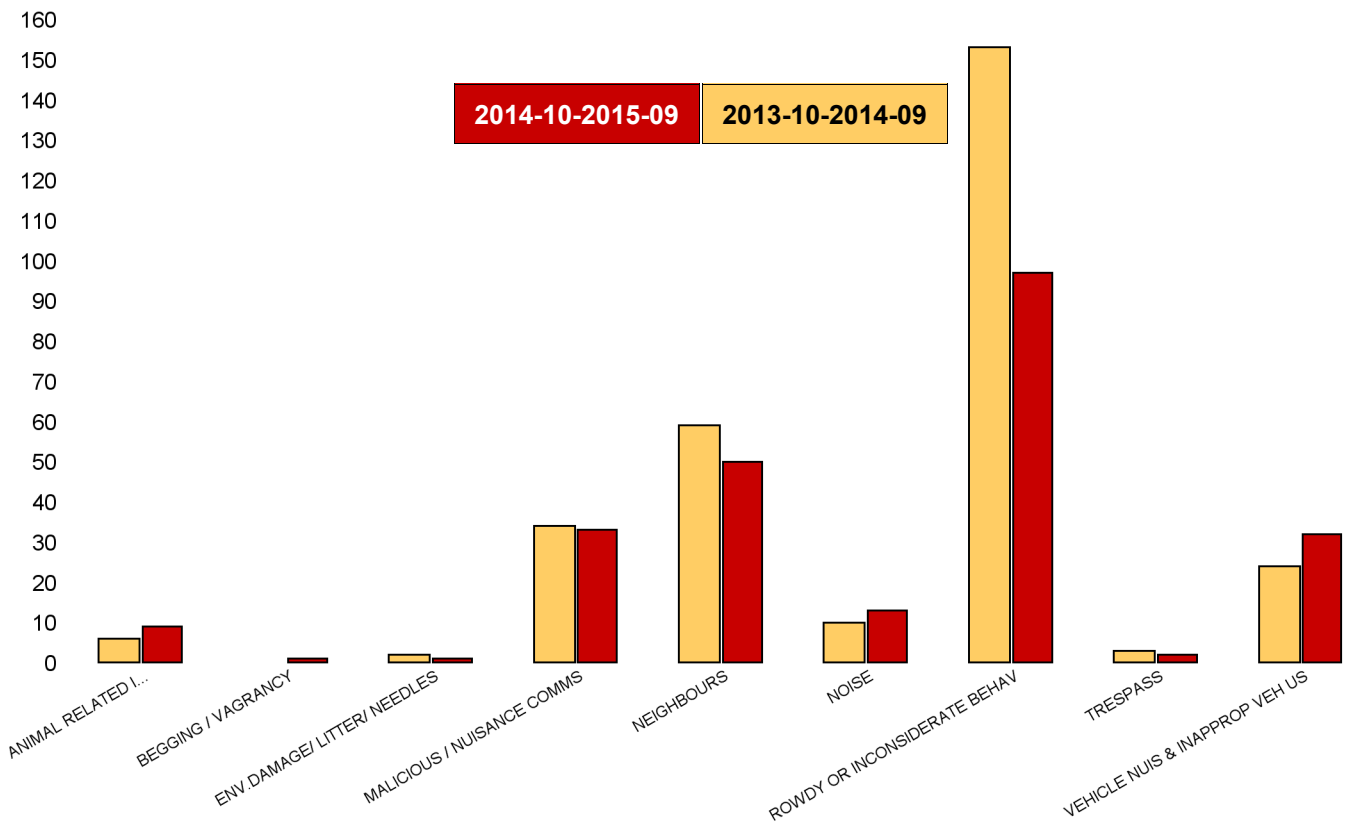
NSIR Closing Cat. 1 Desc	No of Incidents Latest 12 Months	No of Incidents Previous 12 Months	+/- Incidents	% Change Incidents
ANIMAL RELATED INC ANTI-SOCIAL	0	1	-1	-100%
ENV.DAMAGE/ LITTER/ NEEDLES	2	4	-2	-50%
MALICIOUS / NUISANCE COMMS	12	10	2	20%
NEIGHBOURS	13	19	-6	-32%
NOISE	6	6	0	0%
ROWDY OR INCONSIDERATE BEHAV	61	67	-6	-9%
TRESPASS	1	0	1	0%
VEHICLE NUIS & INAPPROP VEH US	17	18	-1	-6%
<b>Sum:</b>	<b>112</b>	<b>125</b>	<b>-13</b>	<b>-10%</b>



## Kettering Rural Forum Report 2013-10 to 2015-09

### Burton Latimer

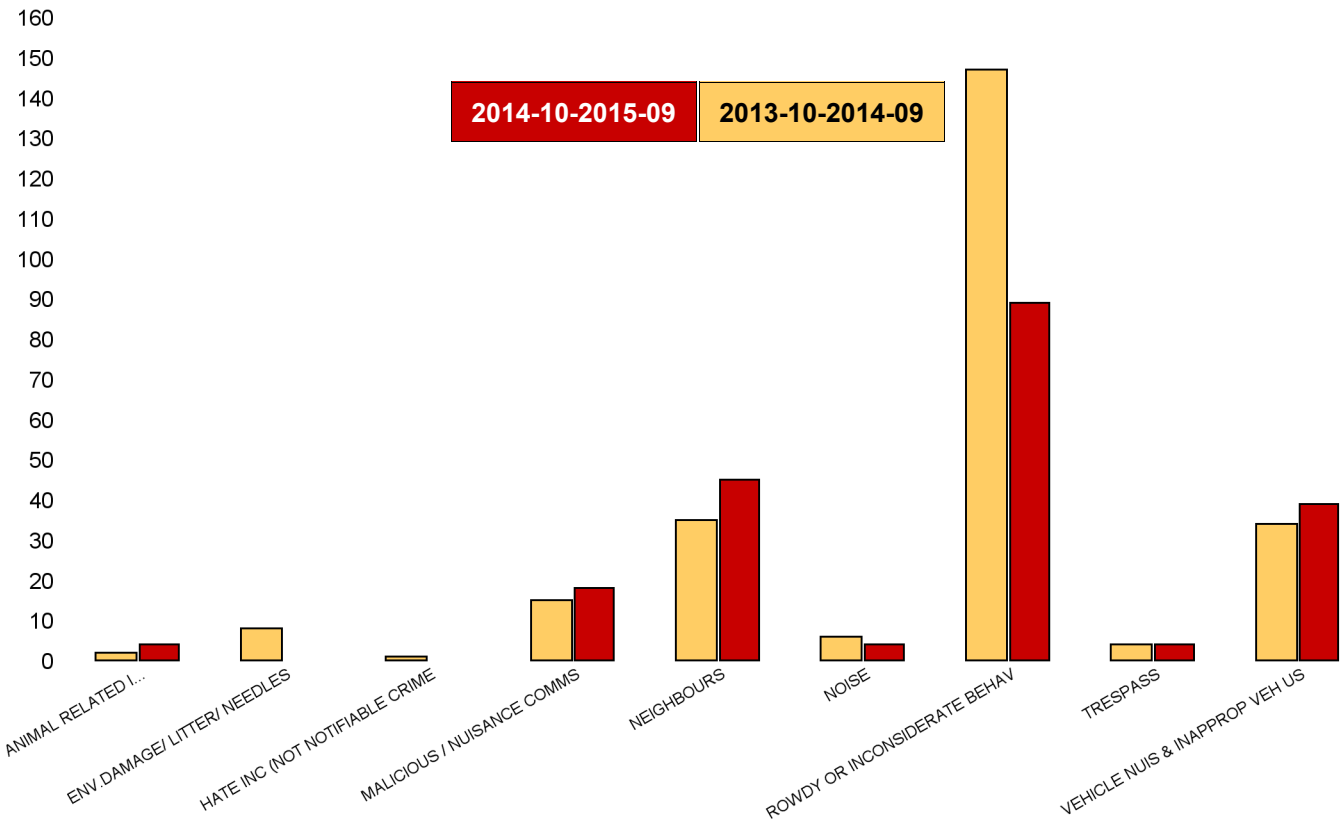
NSIR Closing Cat. 1 Desc	No of Incidents Latest 12 Months	No of Incidents Previous 12 Months	+/- Incidents	% Change Incidents
ANIMAL RELATED INC ANTI-SOCIAL	9	6	3	50%
BEGGING / VAGRANCY	1	0	1	0%
ENV.DAMAGE/ LITTER/ NEEDLES	1	2	-1	-50%
MALICIOUS / NUISANCE COMMS	33	34	-1	-3%
NEIGHBOURS	50	59	-9	-15%
NOISE	13	10	3	30%
ROWDY OR INCONSIDERATE BEHAV	97	153	-56	-37%
TRESPASS	2	3	-1	-33%
VEHICLE NUIS & INAPPROP VEH US	32	24	8	33%
<b>Sum:</b>	<b>238</b>	<b>291</b>	<b>-53</b>	<b>-18%</b>



## Kettering Rural Forum Report 2013-10 to 2015-09

### Desborough Loatland

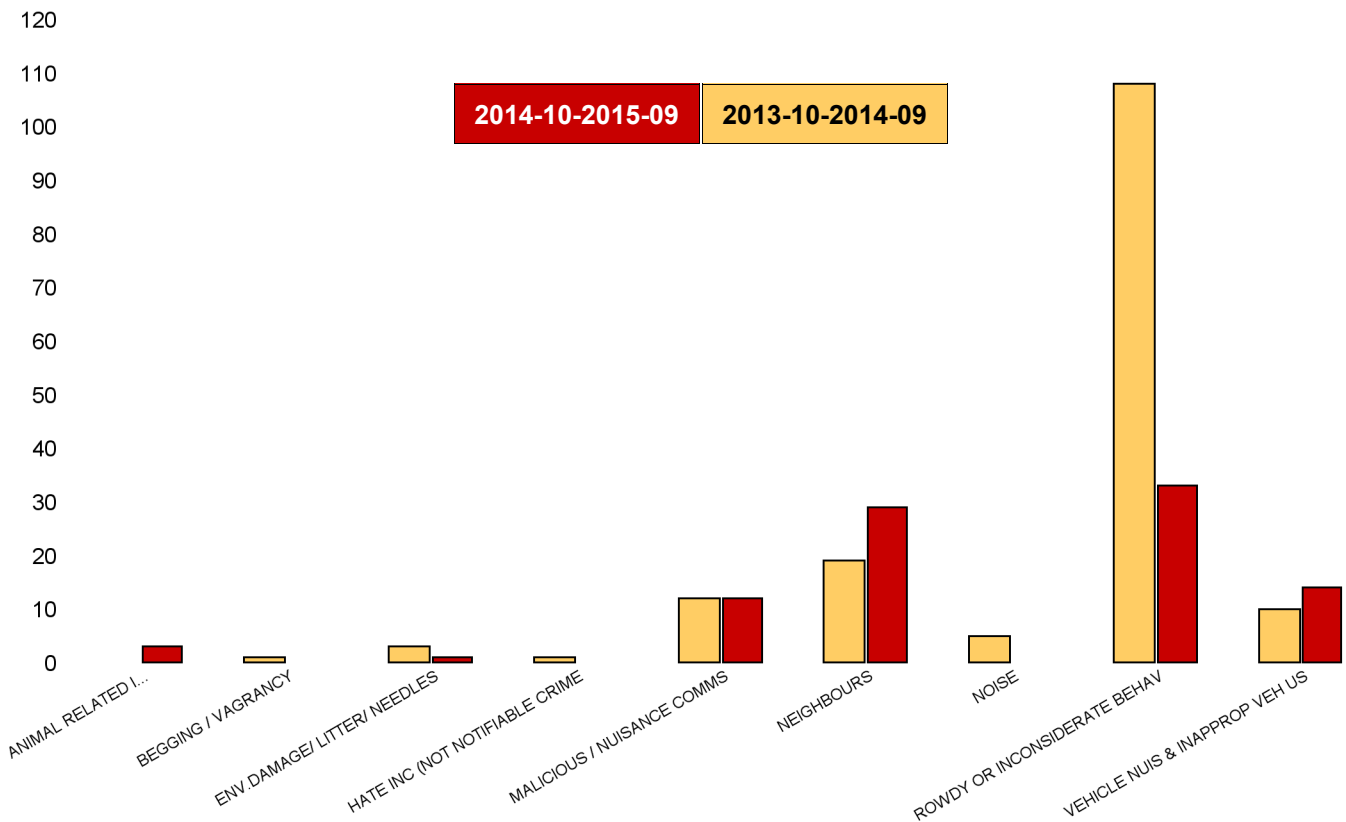
NSIR Closing Cat. 1 Desc	No of Incidents Latest 12 Months	No of Incidents Previous 12 Months	+/- Incidents	% Change Incidents
ANIMAL RELATED INC ANTI-SOCIAL	4	2	2	100%
ENV.DAMAGE/ LITTER/ NEEDLES	0	8	-8	-100%
HATE INC (NOT NOTIFIABLE CRIME	0	1	-1	-100%
MALICIOUS / NUISANCE COMMS	18	15	3	20%
NEIGHBOURS	45	35	10	29%
NOISE	4	6	-2	-33%
ROWDY OR INCONSIDERATE BEHAV	89	147	-58	-39%
TRESPASS	4	4	0	0%
VEHICLE NUIS & INAPPROP VEH US	39	34	5	15%
<b>Sum:</b>	<b>203</b>	<b>252</b>	<b>-49</b>	<b>-19%</b>



## Kettering Rural Forum Report 2013-10 to 2015-09

### Desborough St Giles

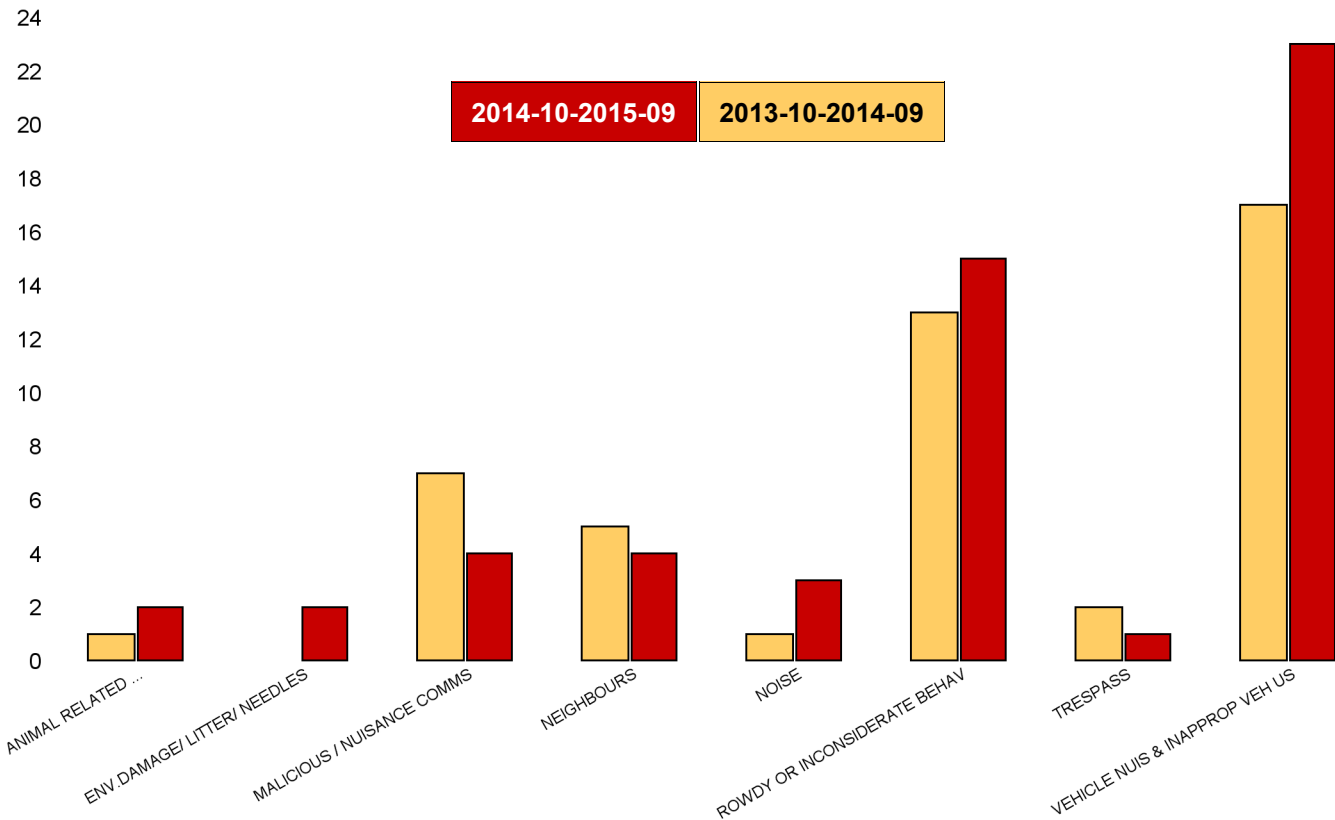
NSIR Closing Cat. 1 Desc	No of Incidents Latest 12 Months	No of Incidents Previous 12 Months	+/- Incidents	% Change Incidents
ANIMAL RELATED INC ANTI-SOCIAL	3	0	3	0%
BEGGING / VAGRANCY	0	1	-1	-100%
ENV.DAMAGE/ LITTER/ NEEDLES	1	3	-2	-67%
HATE INC (NOT NOTIFIABLE CRIME	0	1	-1	-100%
MALICIOUS / NUISANCE COMMS	12	12	0	0%
NEIGHBOURS	29	19	10	53%
NOISE	0	5	-5	-100%
ROWDY OR INCONSIDERATE BEHAV	33	108	-75	-69%
VEHICLE NUIS & INAPPROP VEH US	14	10	4	40%
<b>Sum:</b>	<b>92</b>	<b>159</b>	<b>-67</b>	<b>-42%</b>



## Kettering Rural Forum Report 2013-10 to 2015-09

### Queen Eleanor and Buccleuch

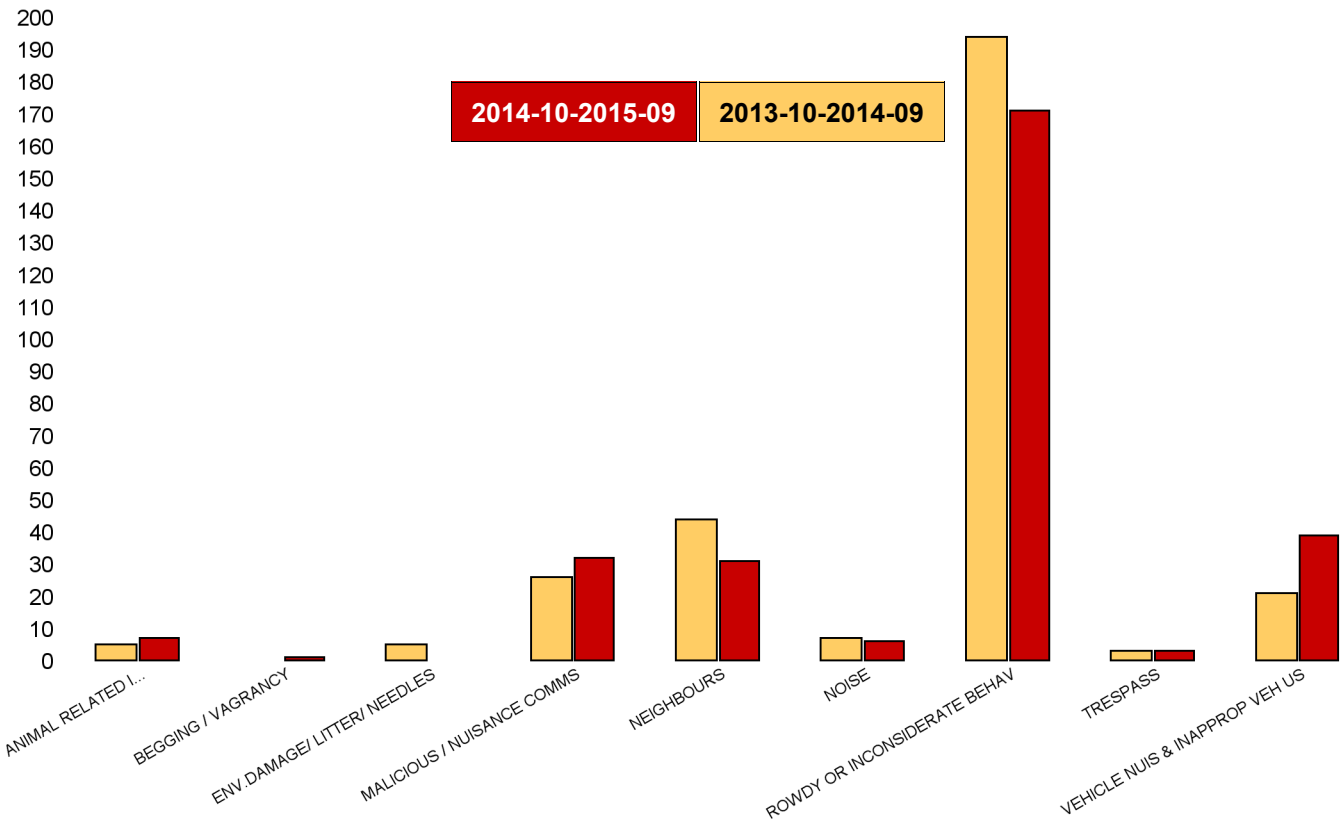
NSIR Closing Cat. 1 Desc	No of Incidents Latest 12 Months	No of Incidents Previous 12 Months	+/- Incidents	% Change Incidents
ANIMAL RELATED INC ANTI-SOCIAL	2	1	1	100%
ENV.DAMAGE/ LITTER/ NEEDLES	2	0	2	0%
MALICIOUS / NUISANCE COMMS	4	7	-3	-43%
NEIGHBOURS	4	5	-1	-20%
NOISE	3	1	2	200%
ROWDY OR INCONSIDERATE BEHAV	15	13	2	15%
TRESPASS	1	2	-1	-50%
VEHICLE NUIS & INAPPROP VEH US	23	17	6	35%
<b>Sum:</b>	<b>54</b>	<b>46</b>	<b>8</b>	<b>17%</b>



## Kettering Rural Forum Report 2013-10 to 2015-09

### Rothwell

NSIR Closing Cat. 1 Desc	No of Incidents Latest 12 Months	No of Incidents Previous 12 Months	+/- Incidents	% Change Incidents
ANIMAL RELATED INC ANTI-SOCIAL	7	5	2	40%
BEGGING / VAGRANCY	1	0	1	0%
ENV.DAMAGE/ LITTER/ NEEDLES	0	5	-5	-100%
MALICIOUS / NUISANCE COMMS	32	26	6	23%
NEIGHBOURS	31	44	-13	-30%
NOISE	6	7	-1	-14%
ROWDY OR INCONSIDERATE BEHAV	171	194	-23	-12%
TRESPASS	3	3	0	0%
VEHICLE NUIS & INAPPROP VEH US	39	21	18	86%
<b>Sum:</b>	<b>290</b>	<b>305</b>	<b>-15</b>	<b>-5%</b>

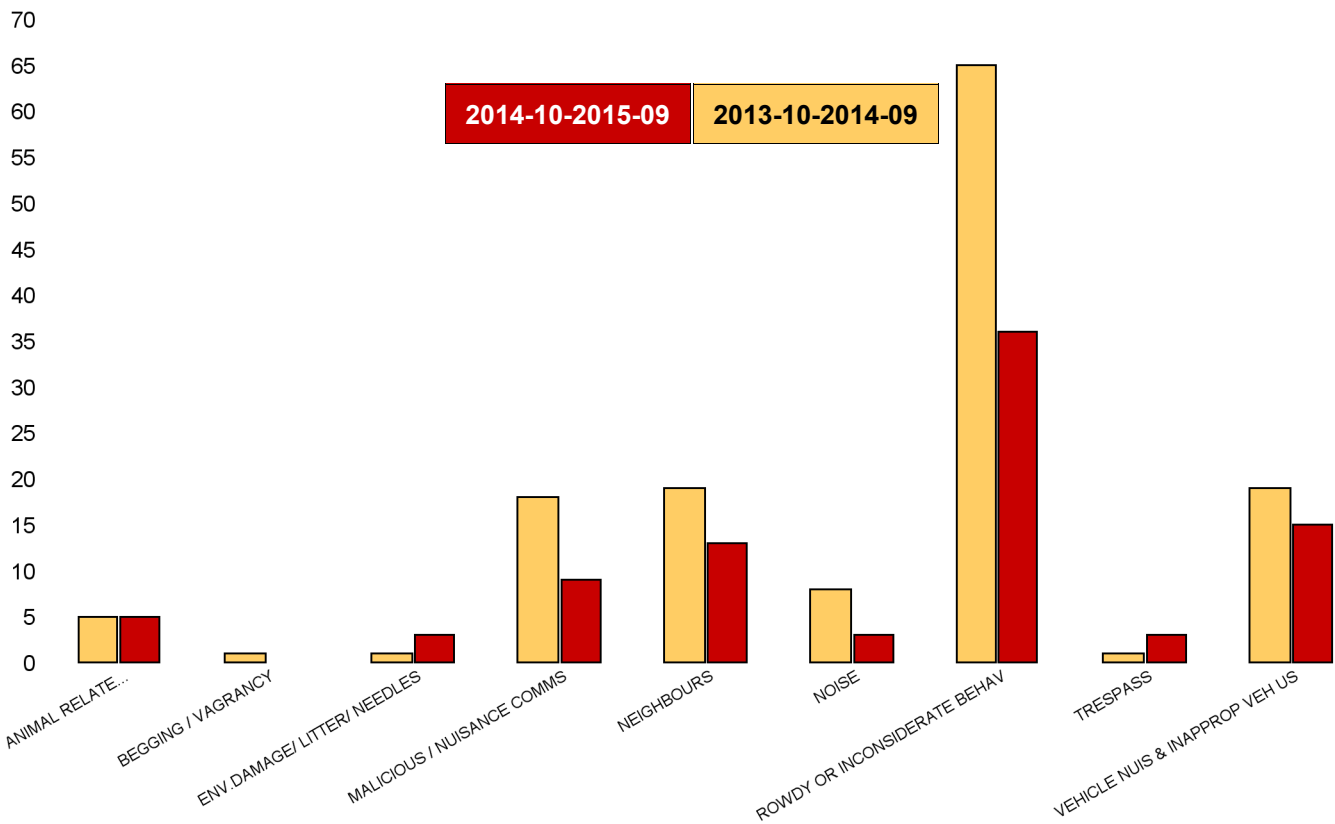




## Kettering Rural Forum Report 2013-10 to 2015-09

### Slade

NSIR Closing Cat. 1 Desc	No of Incidents Latest 12 Months	No of Incidents Previous 12 Months	+/- Incidents	% Change Incidents
ANIMAL RELATED INC ANTI-SOCIAL	5	5	0	0%
BEGGING / VAGRANCY	0	1	-1	-100%
ENV.DAMAGE/ LITTER/ NEEDLES	3	1	2	200%
MALICIOUS / NUISANCE COMMS	9	18	-9	-50%
NEIGHBOURS	13	19	-6	-32%
NOISE	3	8	-5	-63%
ROWDY OR INCONSIDERATE BEHAV	36	65	-29	-45%
TRESPASS	3	1	2	200%
VEHICLE NUIS & INAPPROP VEH US	15	19	-4	-21%
<b>Sum:</b>	<b>87</b>	<b>137</b>	<b>-50</b>	<b>-36%</b>



## Kettering Rural Forum Report 2013-10 to 2015-09

### Welland

NSIR Closing Cat. 1 Desc	No of Incidents Latest 12 Months	No of Incidents Previous 12 Months	+/- Incidents	% Change Incidents
ANIMAL RELATED INC ANTI-SOCIAL	4	2	2	100%
ENV.DAMAGE/ LITTER/ NEEDLES	4	1	3	300%
MALICIOUS / NUISANCE COMMS	2	5	-3	-60%
NEIGHBOURS	2	7	-5	-71%
NOISE	2	1	1	100%
ROWDY OR INCONSIDERATE BEHAV	18	30	-12	-40%
TRESPASS	2	0	2	0%
VEHICLE NUIS & INAPPROP VEH US	17	11	6	55%
<b>Sum:</b>	<b>51</b>	<b>57</b>	<b>-6</b>	<b>-11%</b>

