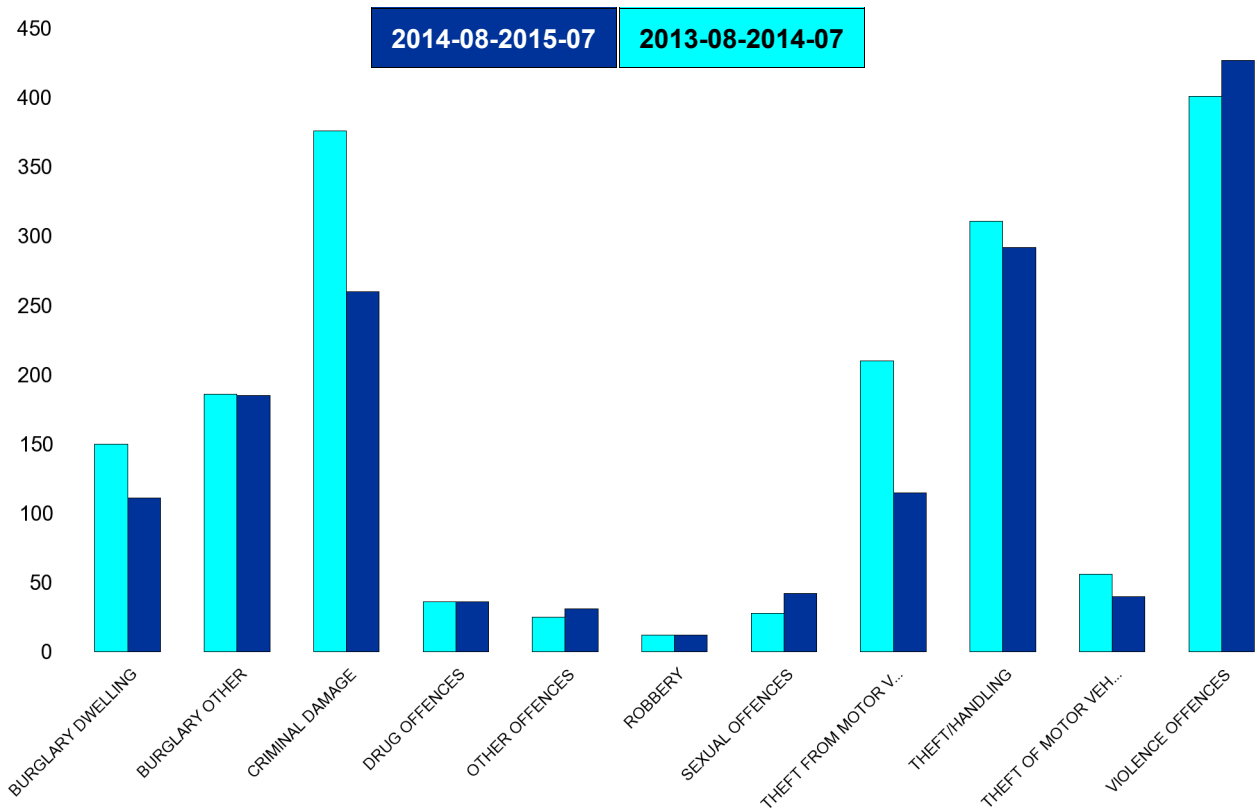


Kettering Rural Forum Report 2013-08 to 2015-07

Kettering Rural SCT - Crime

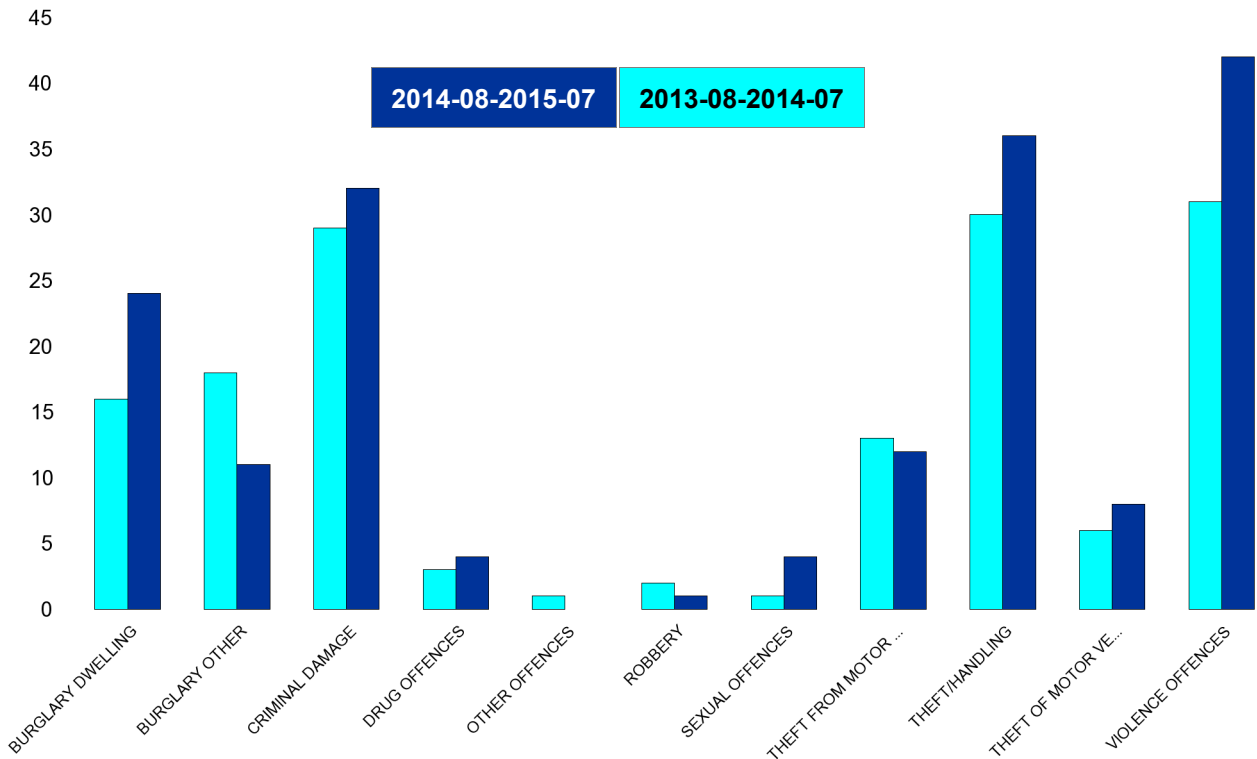
HO Group	No of Crimes Latest 12 Months	No of Crimes Previous 12 Months	+/- Crime	% Change	No of Resolved Outcome Crimes	Detection Rate (Past 12 Months)
BURGLARY DWELLING	111	150	-39	-26%	8	7%
BURGLARY OTHER	185	186	-1	-1%	6	3%
CRIMINAL DAMAGE	260	376	-116	-31%	29	11%
DRUG OFFENCES	36	36	0	0%	30	83%
OTHER OFFENCES	31	25	6	24%	17	55%
ROBBERY	12	12	0	0%	1	8%
SEXUAL OFFENCES	42	28	14	50%	3	7%
THEFT FROM MOTOR VEHICLES	115	210	-95	-45%	2	2%
THEFT/HANDLING	292	311	-19	-6%	48	16%
THEFT OF MOTOR VEHICLES	40	56	-16	-29%	7	18%
VIOLENCE OFFENCES	427	401	26	6%	121	28%
Sum:	1551	1791	-240	-13%	272	18%



Kettering Rural Forum Report 2013-08 to 2015-07

Barton

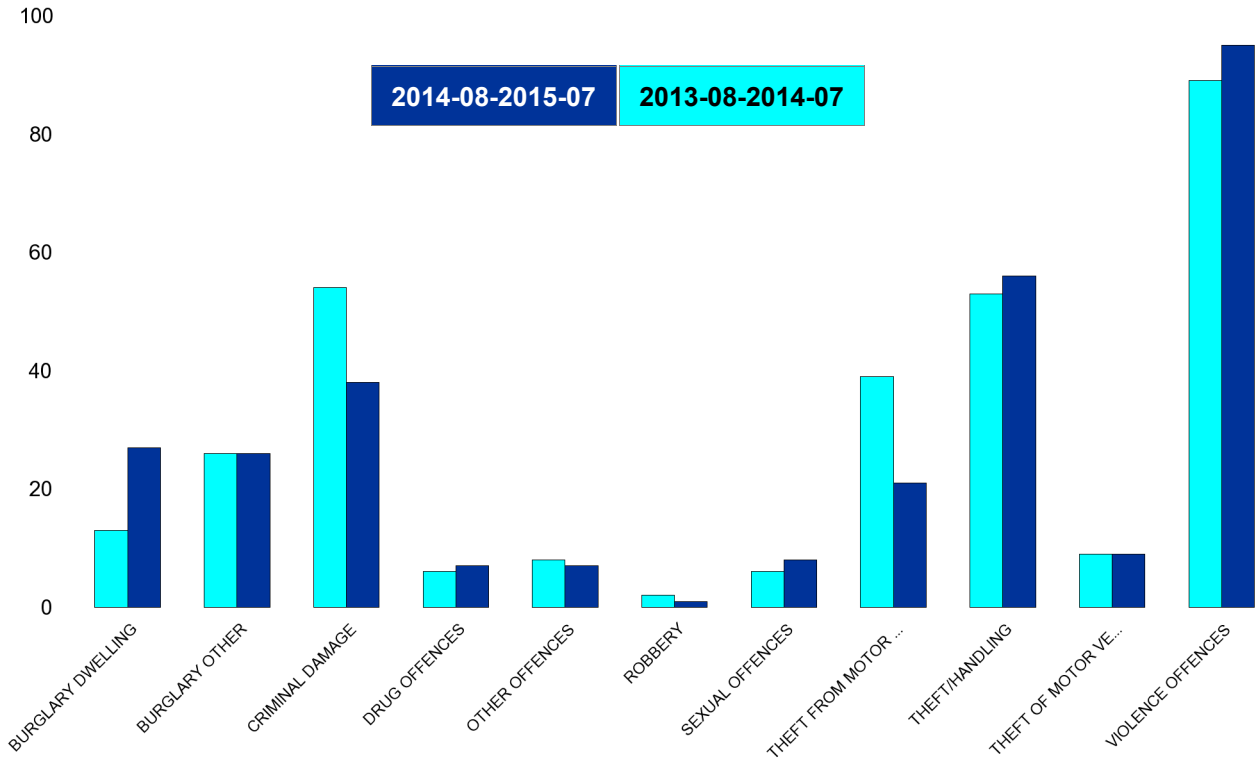
HO Group	No of Crimes Latest 12 Months	No of Crimes Previous 12 Months	+/- Crime	% Change	No of Resolved Outcome Crimes	Detection Rate (Past 12 Months)
BURGLARY DWELLING	24	16	8	50%	1	4%
BURGLARY OTHER	11	18	-7	-39%	0	0%
CRIMINAL DAMAGE	32	29	3	10%	2	6%
DRUG OFFENCES	4	3	1	33%	2	50%
OTHER OFFENCES	0	1	-1	-100%	0	0%
ROBBERY	1	2	-1	-50%	0	0%
SEXUAL OFFENCES	4	1	3	300%	0	0%
THEFT FROM MOTOR VEHICLES	12	13	-1	-8%	0	0%
THEFT/HANDLING	36	30	6	20%	6	17%
THEFT OF MOTOR VEHICLES	8	6	2	33%	1	13%
VIOLENCE OFFENCES	42	31	11	35%	12	29%
Sum:	174	150	24	16%	24	14%



Kettering Rural Forum Report 2013-08 to 2015-07

Burton Latimer

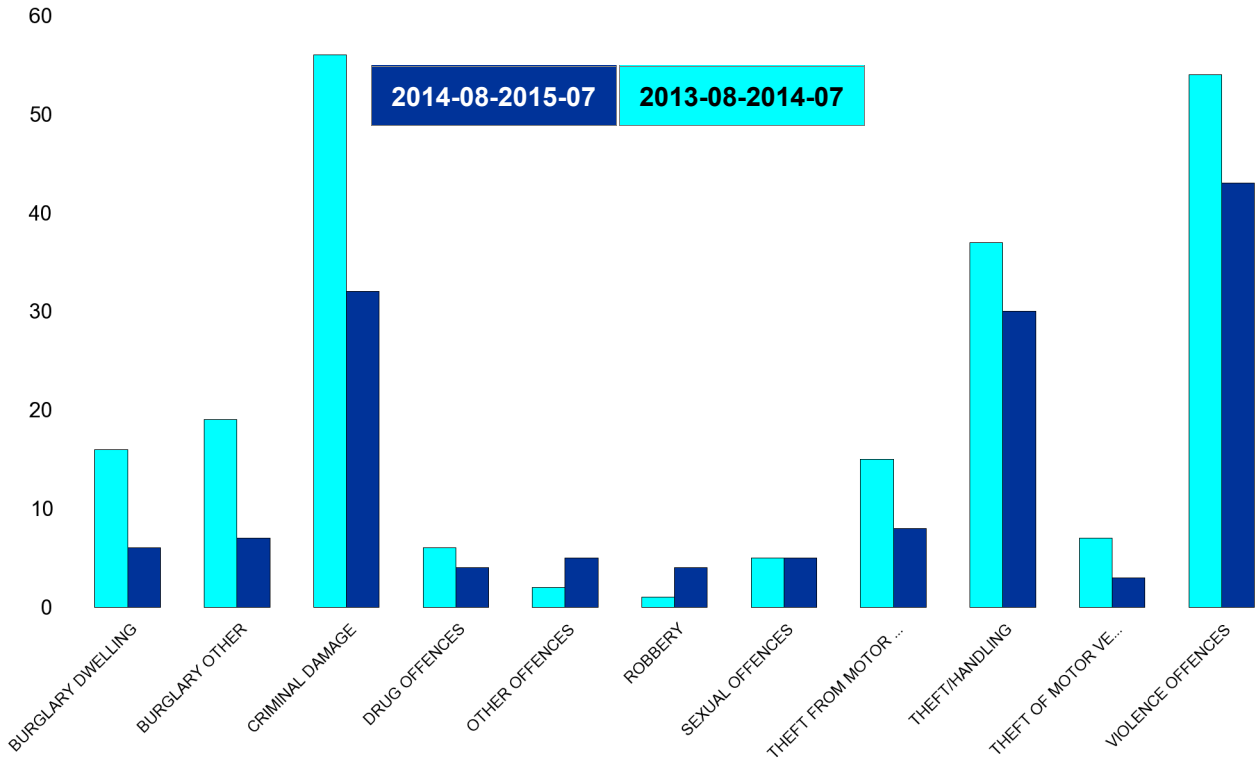
HO Group	No of Crimes Latest 12 Months	No of Crimes Previous 12 Months	+/- Crime	% Change	No of Resolved Outcome Crimes	Detection Rate (Past 12 Months)
BURGLARY DWELLING	27	13	14	108%	1	4%
BURGLARY OTHER	26	26	0	0%	0	0%
CRIMINAL DAMAGE	38	54	-16	-30%	4	11%
DRUG OFFENCES	7	6	1	17%	6	86%
OTHER OFFENCES	7	8	-1	-13%	3	43%
ROBBERY	1	2	-1	-50%	0	0%
SEXUAL OFFENCES	8	6	2	33%	0	0%
THEFT FROM MOTOR VEHICLES	21	39	-18	-46%	0	0%
THEFT/HANDLING	56	53	3	6%	12	21%
THEFT OF MOTOR VEHICLES	9	9	0	0%	1	11%
VIOLENCE OFFENCES	95	89	6	7%	26	27%
Sum:	295	305	-10	-3%	53	18%



Kettering Rural Forum Report 2013-08 to 2015-07

Desborough Loatland

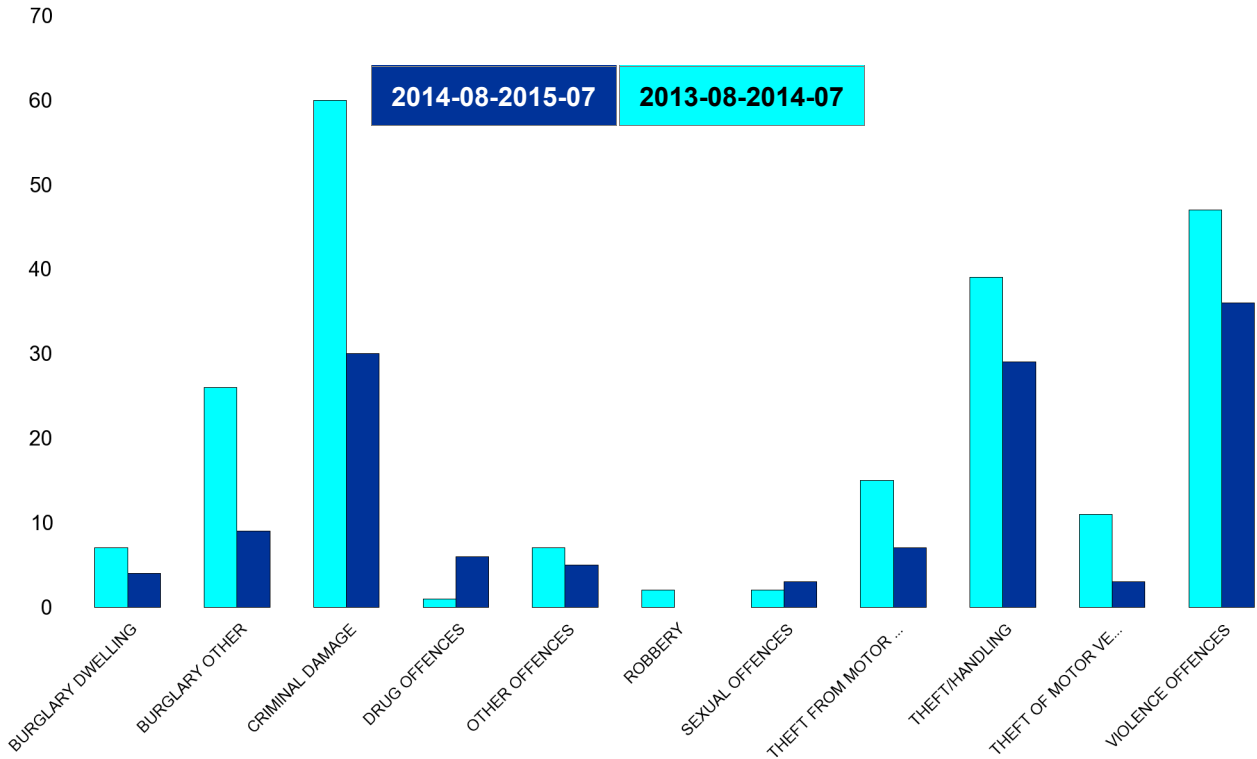
HO Group	No of Crimes Latest 12 Months	No of Crimes Previous 12 Months	+/- Crime	% Change	No of Resolved Outcome Crimes	Detection Rate (Past 12 Months)
BURGLARY DWELLING	6	16	-10	-63%	1	17%
BURGLARY OTHER	7	19	-12	-63%	1	14%
CRIMINAL DAMAGE	32	56	-24	-43%	3	9%
DRUG OFFENCES	4	6	-2	-33%	3	75%
OTHER OFFENCES	5	2	3	150%	1	20%
ROBBERY	4	1	3	300%	1	25%
SEXUAL OFFENCES	5	5	0	0%	1	20%
THEFT FROM MOTOR VEHICLES	8	15	-7	-47%	1	13%
THEFT/HANDLING	30	37	-7	-19%	0	0%
THEFT OF MOTOR VEHICLES	3	7	-4	-57%	0	0%
VIOLENCE OFFENCES	43	54	-11	-20%	12	28%
Sum:	147	218	-71	-33%	24	16%



Kettering Rural Forum Report 2013-08 to 2015-07

Desborough St Giles

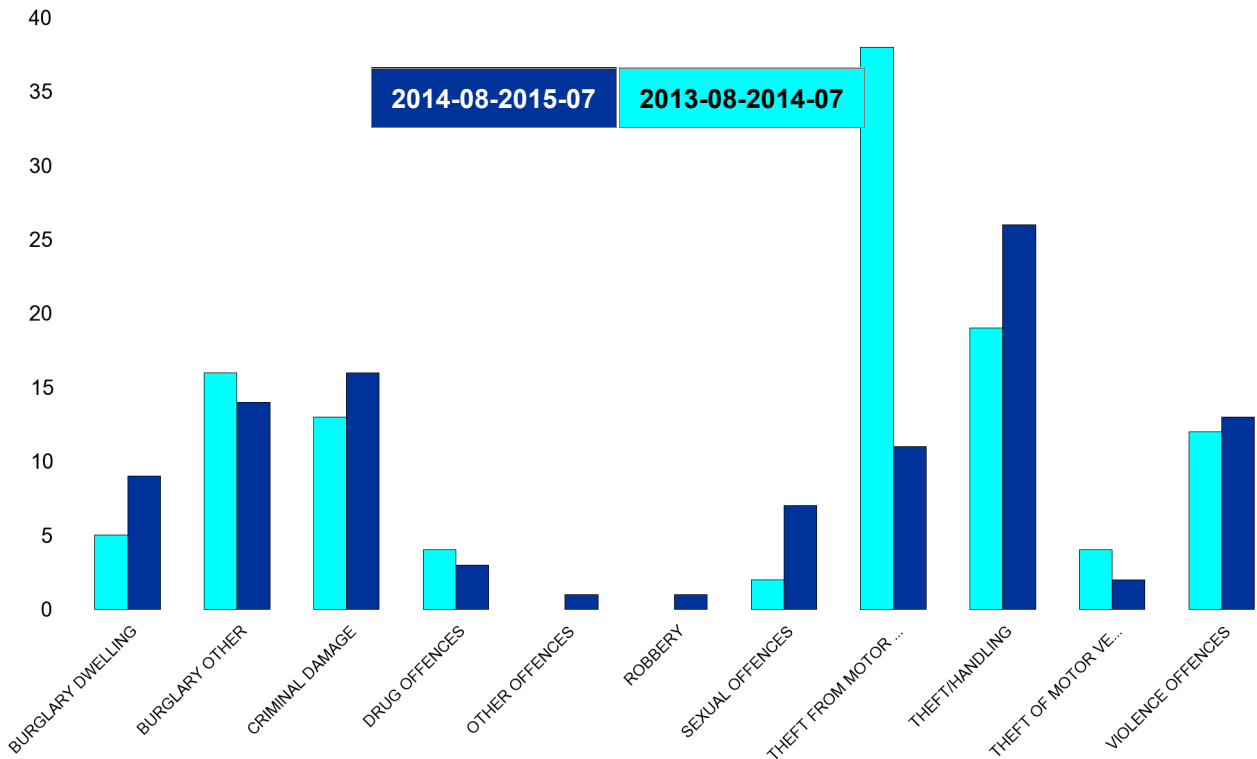
HO Group	No of Crimes Latest 12 Months	No of Crimes Previous 12 Months	+/- Crime	% Change	No of Resolved Outcome Crimes	Detection Rate (Past 12 Months)
BURGLARY DWELLING	4	7	-3	-43%	1	25%
BURGLARY OTHER	9	26	-17	-65%	2	22%
CRIMINAL DAMAGE	30	60	-30	-50%	3	10%
DRUG OFFENCES	6	1	5	500%	5	83%
OTHER OFFENCES	5	7	-2	-29%	4	80%
ROBBERY	0	2	-2	-100%	0	0%
SEXUAL OFFENCES	3	2	1	50%	0	0%
THEFT FROM MOTOR VEHICLES	7	15	-8	-53%	0	0%
THEFT/HANDLING	29	39	-10	-26%	10	34%
THEFT OF MOTOR VEHICLES	3	11	-8	-73%	0	0%
VIOLENCE OFFENCES	36	47	-11	-23%	10	28%
Sum:	132	217	-85	-39%	35	27%



Kettering Rural Forum Report 2013-08 to 2015-07

Queen Eleanor and Buccleuch

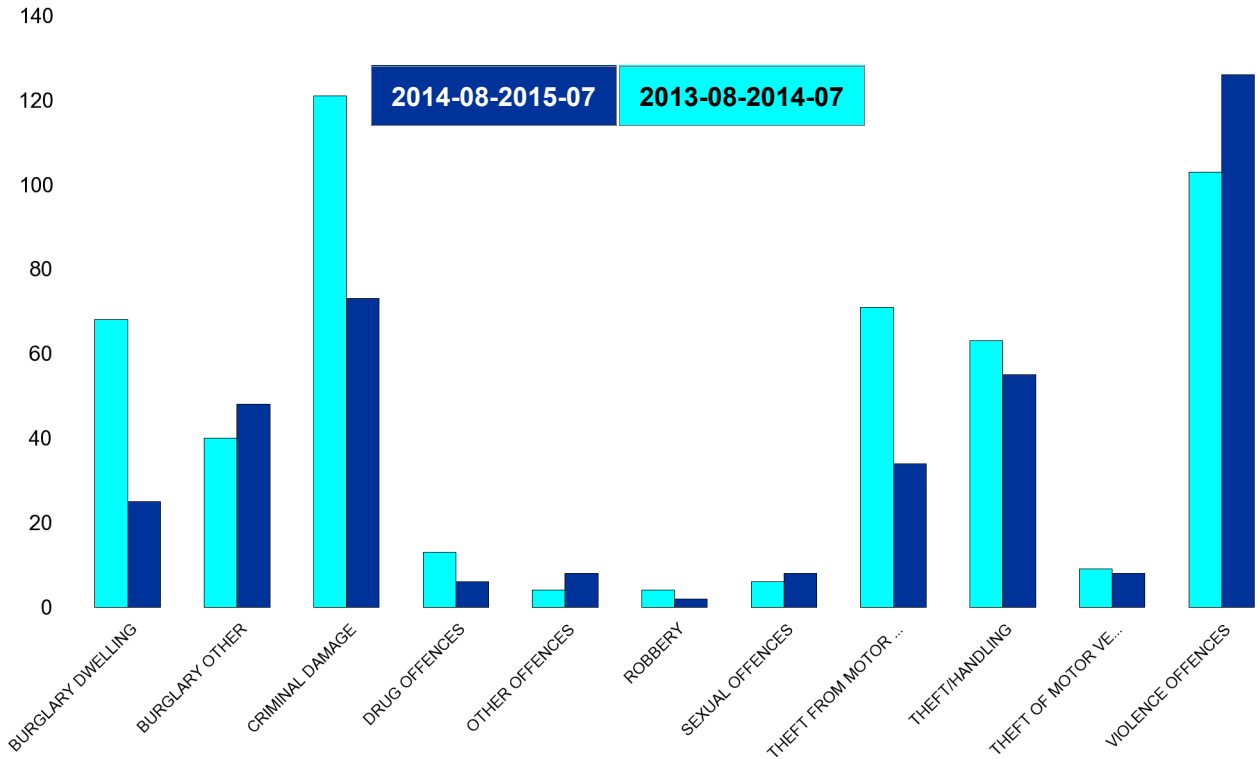
HO Group	No of Crimes Latest 12 Months	No of Crimes Previous 12 Months	+/- Crime	% Change	No of Resolved Outcome Crimes	Detection Rate (Past 12 Months)
BURGLARY DWELLING	9	5	4	80%	0	0%
BURGLARY OTHER	14	16	-2	-13%	0	0%
CRIMINAL DAMAGE	16	13	3	23%	2	13%
DRUG OFFENCES	3	4	-1	-25%	1	33%
OTHER OFFENCES	1	0	1	0%	1	100%
ROBBERY	1	0	1	0%	0	0%
SEXUAL OFFENCES	7	2	5	250%	0	0%
THEFT FROM MOTOR VEHICLES	11	38	-27	-71%	0	0%
THEFT/HANDLING	26	19	7	37%	2	8%
THEFT OF MOTOR VEHICLES	2	4	-2	-50%	1	50%
VIOLENCE OFFENCES	13	12	1	8%	5	38%
Sum:	103	113	-10	-9%	12	12%



Kettering Rural Forum Report 2013-08 to 2015-07

Rothwell

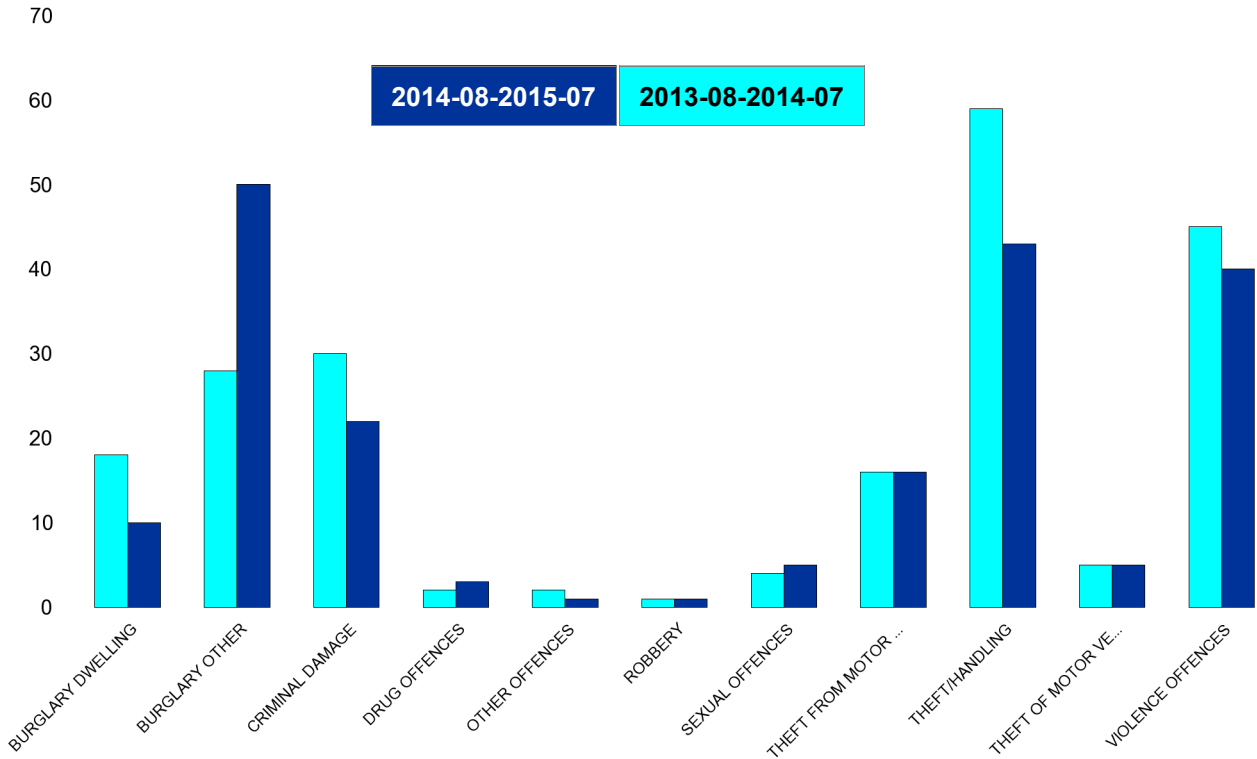
HO Group	No of Crimes Latest 12 Months	No of Crimes Previous 12 Months	+/- Crime	% Change	No of Resolved Outcome Crimes	Detection Rate (Past 12 Months)
BURGLARY DWELLING	25	68	-43	-63%	3	12%
BURGLARY OTHER	48	40	8	20%	3	6%
CRIMINAL DAMAGE	73	121	-48	-40%	11	15%
DRUG OFFENCES	6	13	-7	-54%	8	133%
OTHER OFFENCES	8	4	4	100%	7	88%
ROBBERY	2	4	-2	-50%	0	0%
SEXUAL OFFENCES	8	6	2	33%	2	25%
THEFT FROM MOTOR VEHICLES	34	71	-37	-52%	0	0%
THEFT/HANDLING	55	63	-8	-13%	15	27%
THEFT OF MOTOR VEHICLES	8	9	-1	-11%	3	38%
VIOLENCE OFFENCES	126	103	23	22%	31	25%
Sum:	393	502	-109	-22%	83	21%



Kettering Rural Forum Report 2013-08 to 2015-07

Slade

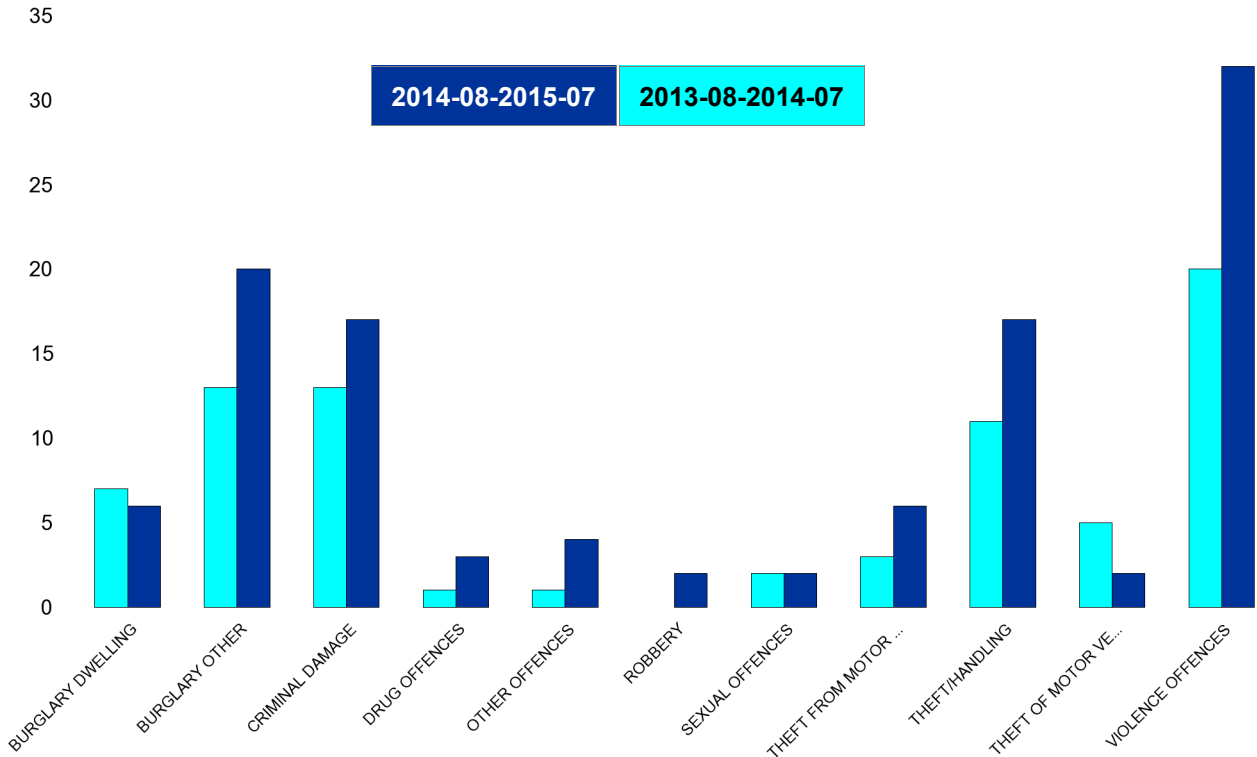
HO Group	No of Crimes Latest 12 Months	No of Crimes Previous 12 Months	+/- Crime	% Change	No of Resolved Outcome Crimes	Detection Rate (Past 12 Months)
BURGLARY DWELLING	10	18	-8	-44%	0	0%
BURGLARY OTHER	50	28	22	79%	0	0%
CRIMINAL DAMAGE	22	30	-8	-27%	1	5%
DRUG OFFENCES	3	2	1	50%	3	100%
OTHER OFFENCES	1	2	-1	-50%	0	0%
ROBBERY	1	1	0	0%	0	0%
SEXUAL OFFENCES	5	4	1	25%	0	0%
THEFT FROM MOTOR VEHICLES	16	16	0	0%	1	6%
THEFT/HANDLING	43	59	-16	-27%	3	7%
THEFT OF MOTOR VEHICLES	5	5	0	0%	1	20%
VIOLENCE OFFENCES	40	45	-5	-11%	9	23%
Sum:	196	210	-14	-7%	18	9%



Kettering Rural Forum Report 2013-08 to 2015-07

Welland

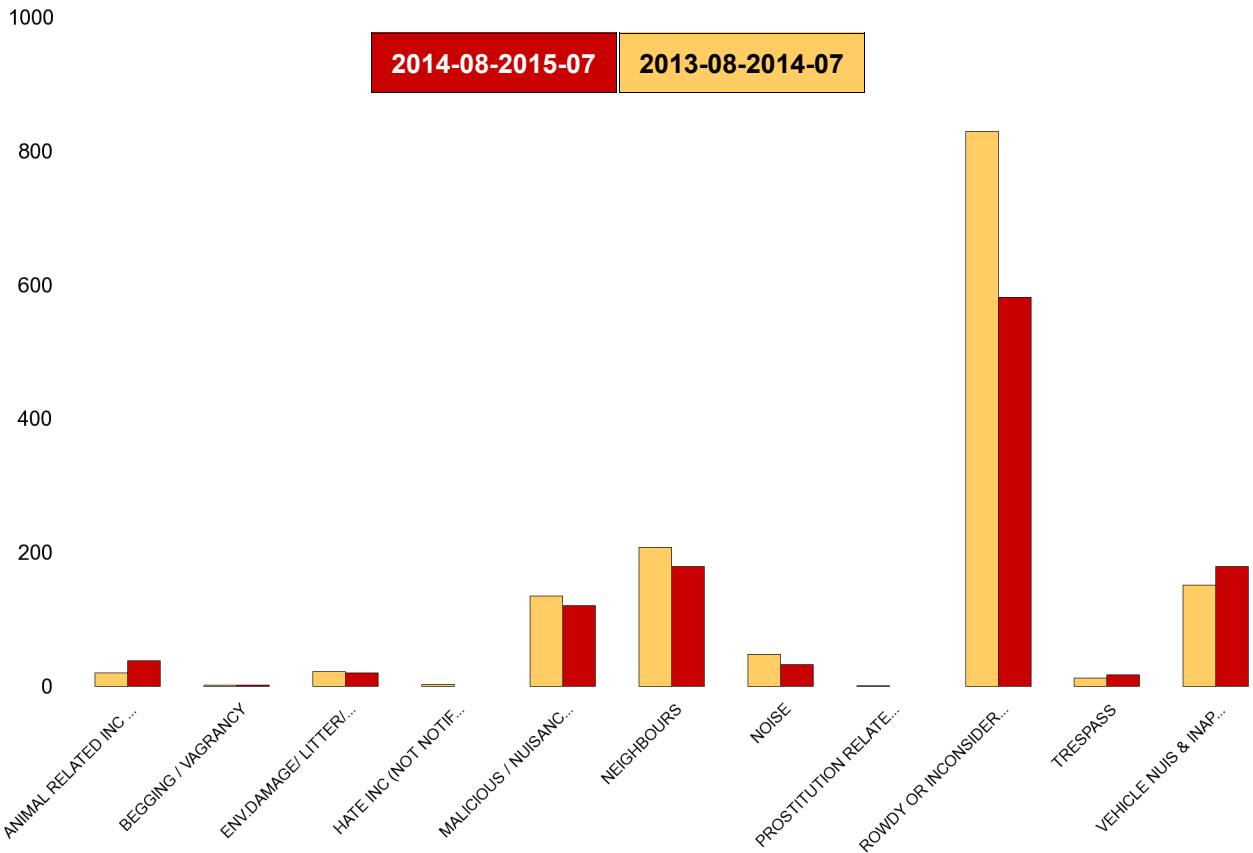
HO Group	No of Crimes Latest 12 Months	No of Crimes Previous 12 Months	+/- Crime	% Change	No of Resolved Outcome Crimes	Detection Rate (Past 12 Months)
BURGLARY DWELLING	6	7	-1	-14%	1	17%
BURGLARY OTHER	20	13	7	54%	0	0%
CRIMINAL DAMAGE	17	13	4	31%	3	18%
DRUG OFFENCES	3	1	2	200%	2	67%
OTHER OFFENCES	4	1	3	300%	1	25%
ROBBERY	2	0	2	0%	0	0%
SEXUAL OFFENCES	2	2	0	0%	0	0%
THEFT FROM MOTOR VEHICLES	6	3	3	100%	0	0%
THEFT/HANDLING	17	11	6	55%	0	0%
THEFT OF MOTOR VEHICLES	2	5	-3	-60%	0	0%
VIOLENCE OFFENCES	32	20	12	60%	16	50%
Sum:	111	76	35	46%	23	21%



Kettering Rural Forum Report 2013-08 to 2015-07

Kettering Rural SCT - ASB

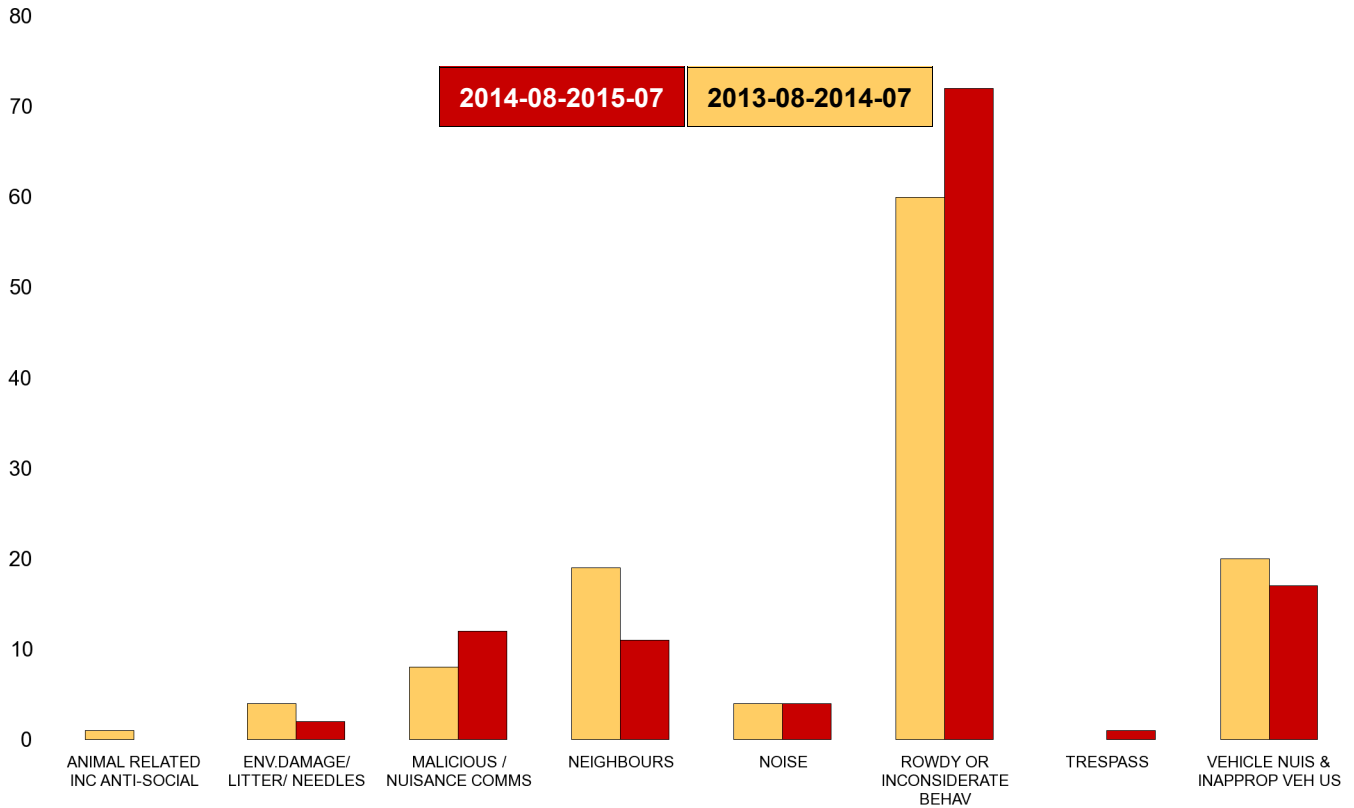
NSIR Closing Cat. 1 Desc	No of Incidents Latest 12 Months	No of Incidents Previous 12 Months	+/- Incidents	% Change Incidents
ANIMAL RELATED INC ANTI-SOCIAL	38	20	18	90%
BEGGING / VAGRANCY	2	2	0	0%
ENV.DAMAGE/ LITTER/ NEEDLES	20	22	-2	-9%
HATE INC (NOT NOTIFIABLE CRIME	0	3	-3	-100%
MALICIOUS / NUISANCE COMMS	120	135	-15	-11%
NEIGHBOURS	179	208	-29	-14%
NOISE	32	48	-16	-33%
PROSTITUTION RELATED ACTIVITY	0	1	-1	-100%
ROWDY OR INCONSIDERATE BEHAV	581	829	-248	-30%
TRESPASS	17	12	5	42%
VEHICLE NUIS & INAPPROP VEH US	179	151	28	19%
Sum:	1168	1431	-263	-18%



Kettering Rural Forum Report 2013-08 to 2015-07

Barton

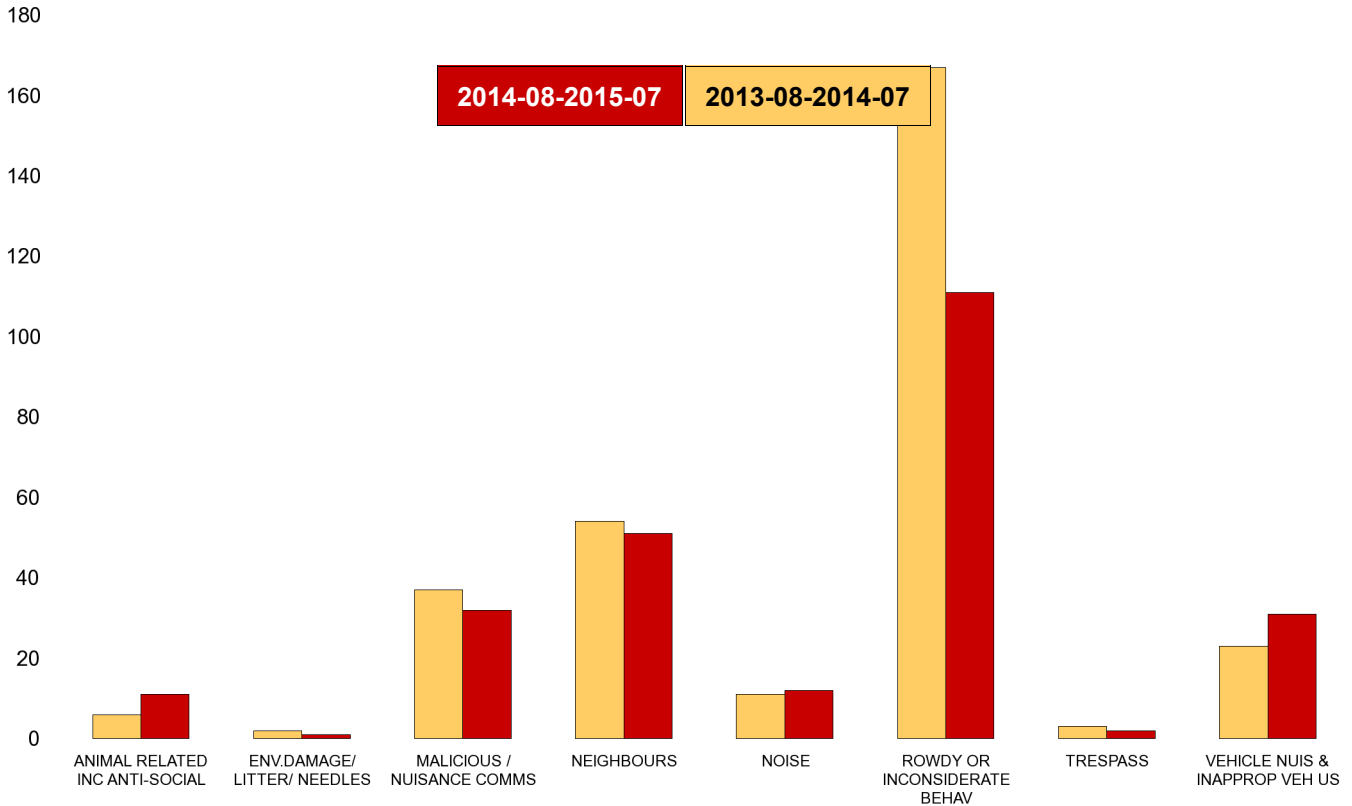
NSIR Closing Cat. 1 Desc	No of Incidents Latest 12 Months	No of Incidents Previous 12 Months	+/- Incidents	% Change Incidents
ANIMAL RELATED INC ANTI-SOCIAL	0	1	-1	-100%
ENV.DAMAGE/ LITTER/ NEEDLES	2	4	-2	-50%
MALICIOUS / NUISANCE COMMS	12	8	4	50%
NEIGHBOURS	11	19	-8	-42%
NOISE	4	4	0	0%
ROWDY OR INCONSIDERATE BEHAV	72	60	12	20%
TRESPASS	1	0	1	0%
VEHICLE NUIS & INAPPROP VEH US	17	20	-3	-15%
Sum:	119	116	3	3%



Kettering Rural Forum Report 2013-08 to 2015-07

Burton Latimer

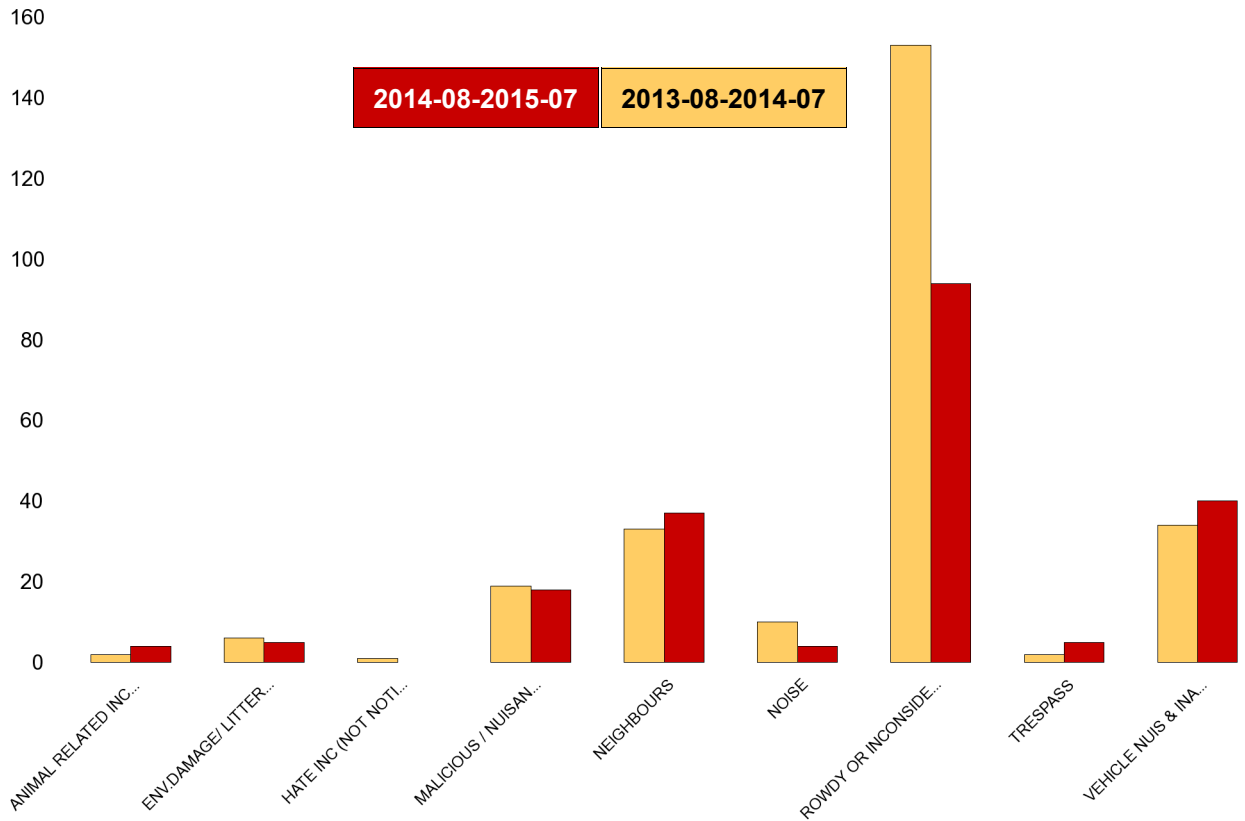
NSIR Closing Cat. 1 Desc	No of Incidents Latest 12 Months	No of Incidents Previous 12 Months	+/- Incidents	% Change Incidents
ANIMAL RELATED INC ANTI-SOCIAL	11	6	5	83%
ENV.DAMAGE/ LITTER/ NEEDLES	1	2	-1	-50%
MALICIOUS / NUISANCE COMMS	32	37	-5	-14%
NEIGHBOURS	51	54	-3	-6%
NOISE	12	11	1	9%
ROWDY OR INCONSIDERATE BEHAV	111	167	-56	-34%
TRESPASS	2	3	-1	-33%
VEHICLE NUIS & INAPPROP VEH US	31	23	8	35%
Sum:	251	303	-52	-17%



Kettering Rural Forum Report 2013-08 to 2015-07

Desborough Loatland

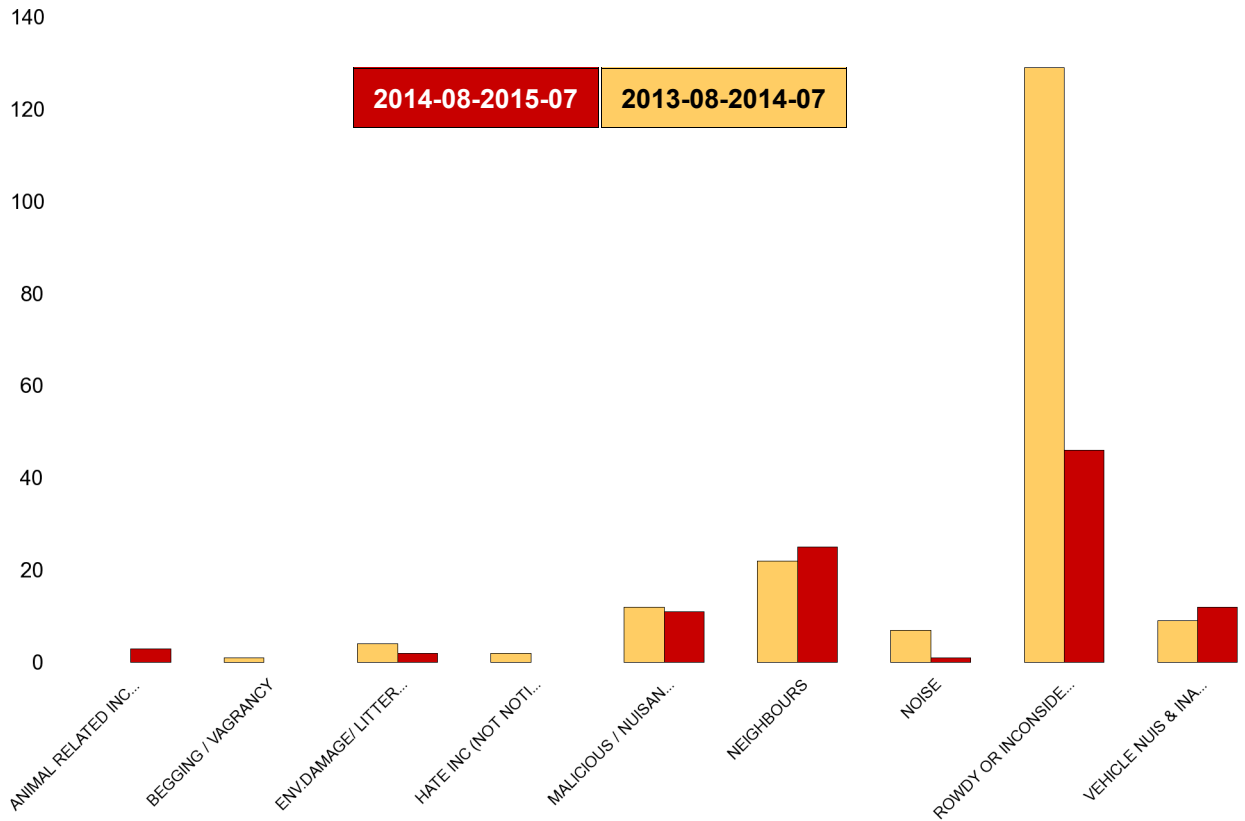
NSIR Closing Cat. 1 Desc	No of Incidents Latest 12 Months	No of Incidents Previous 12 Months	+/- Incidents	% Change Incidents
ANIMAL RELATED INC ANTI-SOCIAL	4	2	2	100%
ENV.DAMAGE/ LITTER/ NEEDLES	5	6	-1	-17%
HATE INC (NOT NOTIFIABLE CRIME	0	1	-1	-100%
MALICIOUS / NUISANCE COMMS	18	19	-1	-5%
NEIGHBOURS	37	33	4	12%
NOISE	4	10	-6	-60%
ROWDY OR INCONSIDERATE BEHAV	94	153	-59	-39%
TRESPASS	5	2	3	150%
VEHICLE NUIS & INAPPROP VEH US	40	34	6	18%
Sum:	207	260	-53	-20%



Kettering Rural Forum Report 2013-08 to 2015-07

Desborough St Giles

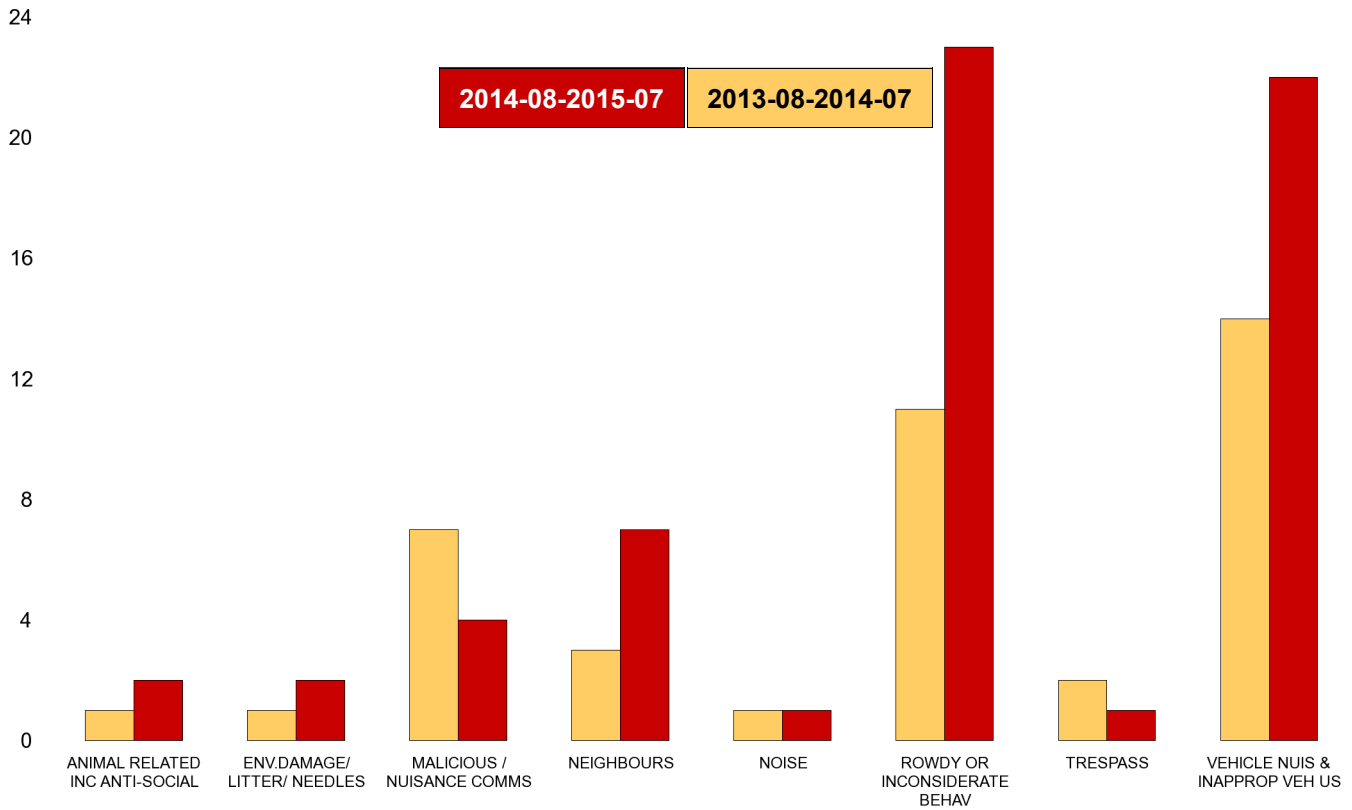
NSIR Closing Cat. 1 Desc	No of Incidents Latest 12 Months	No of Incidents Previous 12 Months	+/- Incidents	% Change Incidents
ANIMAL RELATED INC ANTI-SOCIAL	3	0	3	0%
BEGGING / VAGRANCY	0	1	-1	-100%
ENV.DAMAGE/ LITTER/ NEEDLES	2	4	-2	-50%
HATE INC (NOT NOTIFIABLE CRIME	0	2	-2	-100%
MALICIOUS / NUISANCE COMMS	11	12	-1	-8%
NEIGHBOURS	25	22	3	14%
NOISE	1	7	-6	-86%
ROWDY OR INCONSIDERATE BEHAV	46	129	-83	-64%
VEHICLE NUIS & INAPPROP VEH US	12	9	3	33%
Sum:	100	186	-86	-46%



Kettering Rural Forum Report 2013-08 to 2015-07

Queen Eleanor and Buccleuch

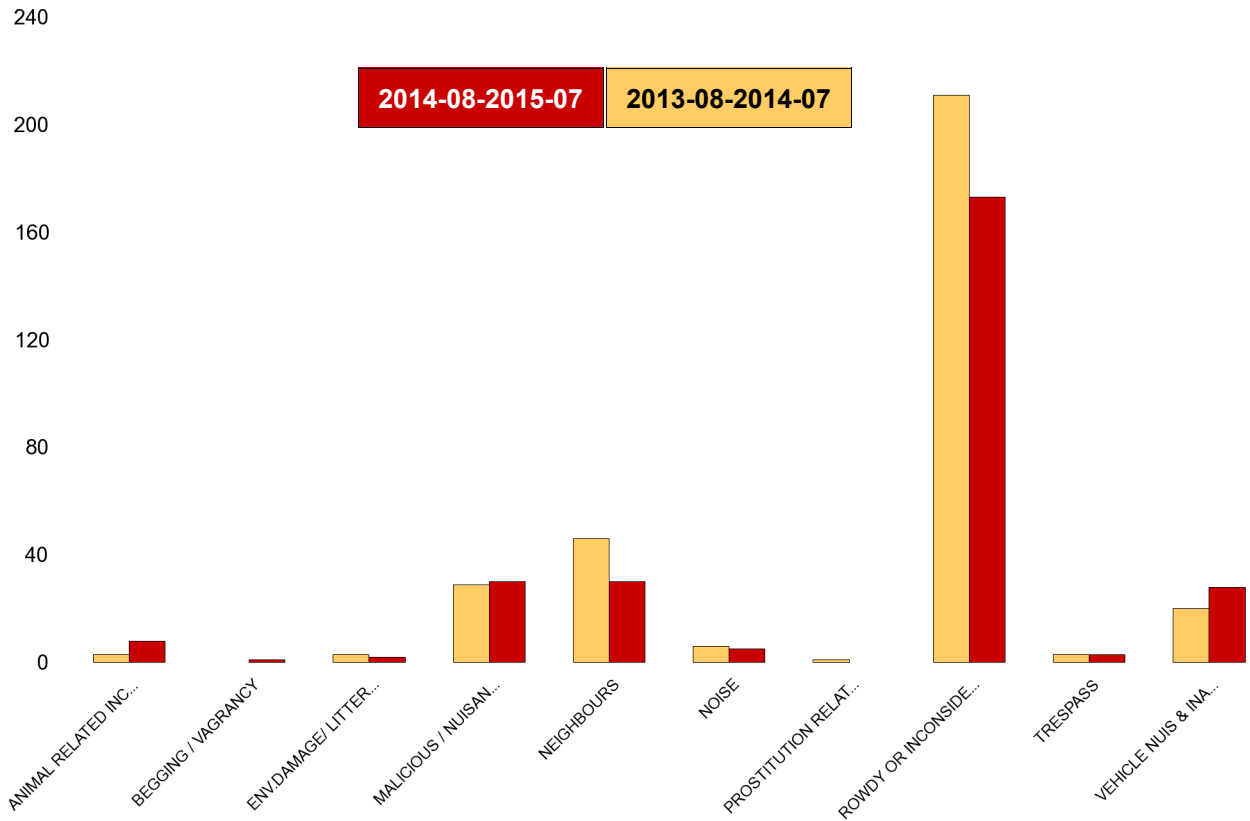
NSIR Closing Cat. 1 Desc	No of Incidents Latest 12 Months	No of Incidents Previous 12 Months	+/- Incidents	% Change Incidents
ANIMAL RELATED INC ANTI-SOCIAL	2	1	1	100%
ENV.DAMAGE/ LITTER/ NEEDLES	2	1	1	100%
MALICIOUS / NUISANCE COMMS	4	7	-3	-43%
NEIGHBOURS	7	3	4	133%
NOISE	1	1	0	0%
ROWDY OR INCONSIDERATE BEHAV	23	11	12	109%
TRESPASS	1	2	-1	-50%
VEHICLE NUIS & INAPPROP VEH US	22	14	8	57%
Sum:	62	40	22	55%



Kettering Rural Forum Report 2013-08 to 2015-07

Rothwell

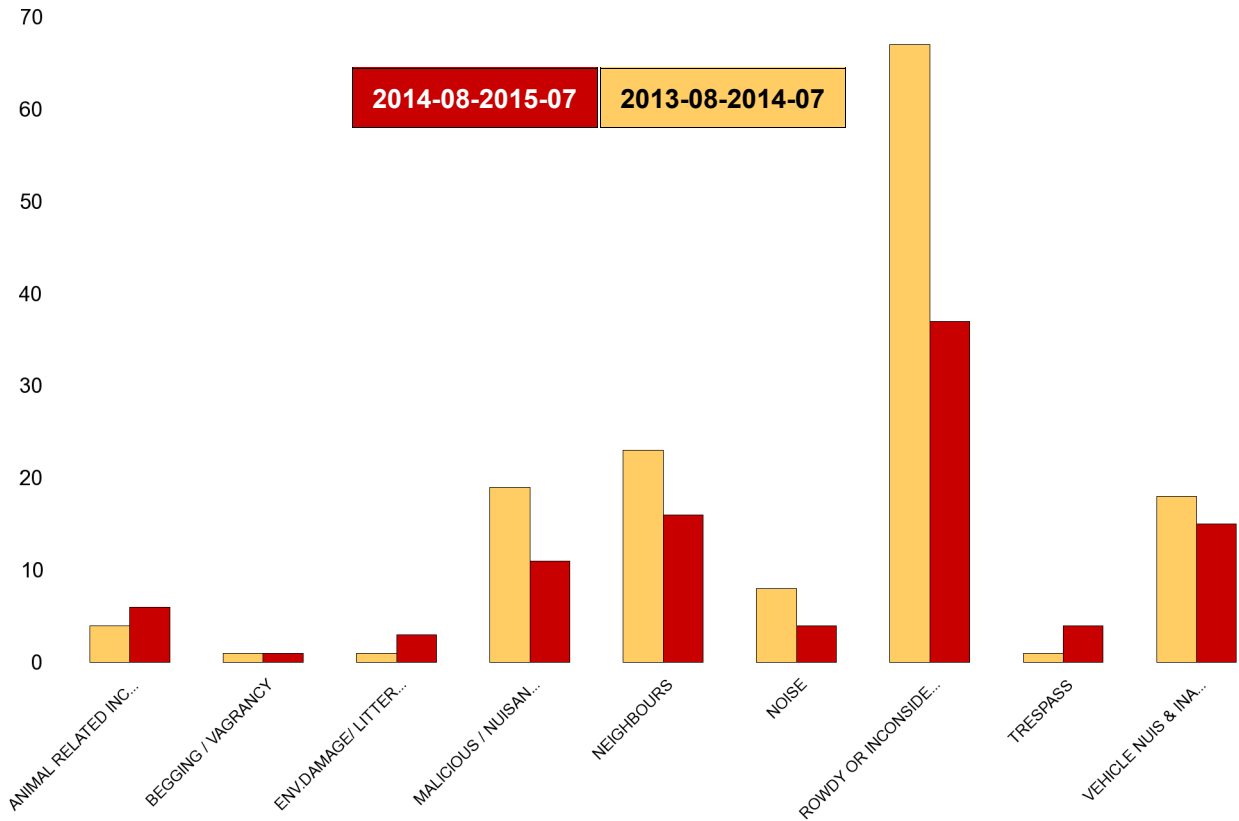
NSIR Closing Cat. 1 Desc	No of Incidents Latest 12 Months	No of Incidents Previous 12 Months	+/- Incidents	% Change Incidents
ANIMAL RELATED INC ANTI-SOCIAL	8	3	5	167%
BEGGING / VAGRANCY	1	0	1	0%
ENV.DAMAGE/ LITTER/ NEEDLES	2	3	-1	-33%
MALICIOUS / NUISANCE COMMS	30	29	1	3%
NEIGHBOURS	30	46	-16	-35%
NOISE	5	6	-1	-17%
PROSTITUTION RELATED ACTIVITY	0	1	-1	-100%
ROWDY OR INCONSIDERATE BEHAV	173	211	-38	-18%
TRESPASS	3	3	0	0%
VEHICLE NUIS & INAPPROP VEH US	28	20	8	40%
Sum:	280	322	-42	-13%



Kettering Rural Forum Report 2013-08 to 2015-07

Slade

NSIR Closing Cat. 1 Desc	No of Incidents Latest 12 Months	No of Incidents Previous 12 Months	+/- Incidents	% Change Incidents
ANIMAL RELATED INC ANTI-SOCIAL	6	4	2	50%
BEGGING / VAGRANCY	1	1	0	0%
ENV.DAMAGE/ LITTER/ NEEDLES	3	1	2	200%
MALICIOUS / NUISANCE COMMS	11	19	-8	-42%
NEIGHBOURS	16	23	-7	-30%
NOISE	4	8	-4	-50%
ROWDY OR INCONSIDERATE BEHAV	37	67	-30	-45%
TRESPASS	4	1	3	300%
VEHICLE NUIS & INAPPROP VEH US	15	18	-3	-17%
Sum:	97	142	-45	-32%



Kettering Rural Forum Report 2013-08 to 2015-07

Welland

NSIR Closing Cat. 1 Desc	No of Incidents Latest 12 Months	No of Incidents Previous 12 Months	+/- Incidents	% Change Incidents
ANIMAL RELATED INC ANTI-SOCIAL	4	3	1	33%
ENV.DAMAGE/ LITTER/ NEEDLES	3	1	2	200%
MALICIOUS / NUISANCE COMMS	2	4	-2	-50%
NEIGHBOURS	2	8	-6	-75%
NOISE	1	1	0	0%
ROWDY OR INCONSIDERATE BEHAV	25	31	-6	-19%
TRESPASS	1	1	0	0%
VEHICLE NUIS & INAPPROP VEH US	14	13	1	8%
Sum:	52	62	-10	-16%

