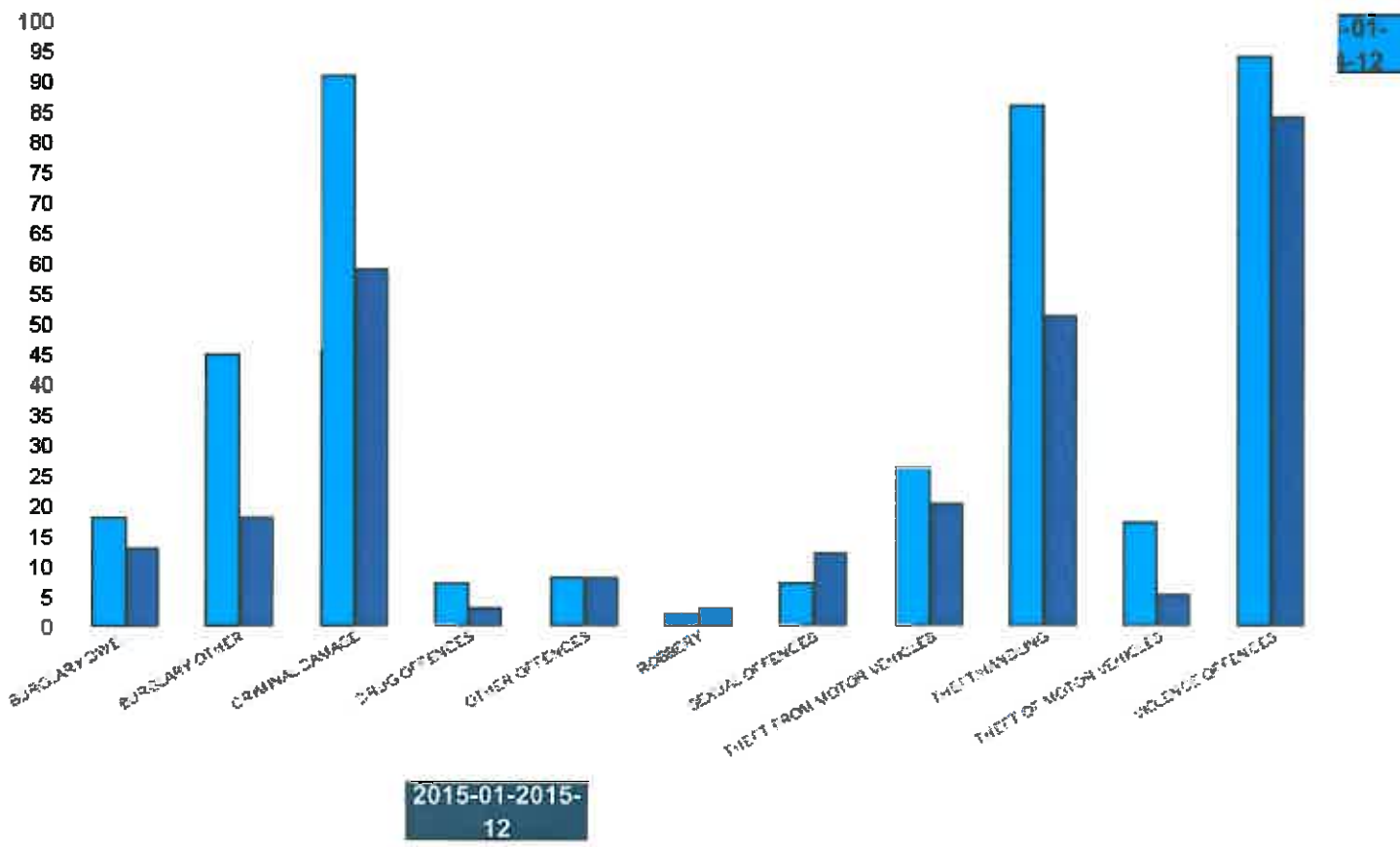


A6 Towns Forum Report 2014-01 to 2015-12

K006 & K007 Desborough - Crime

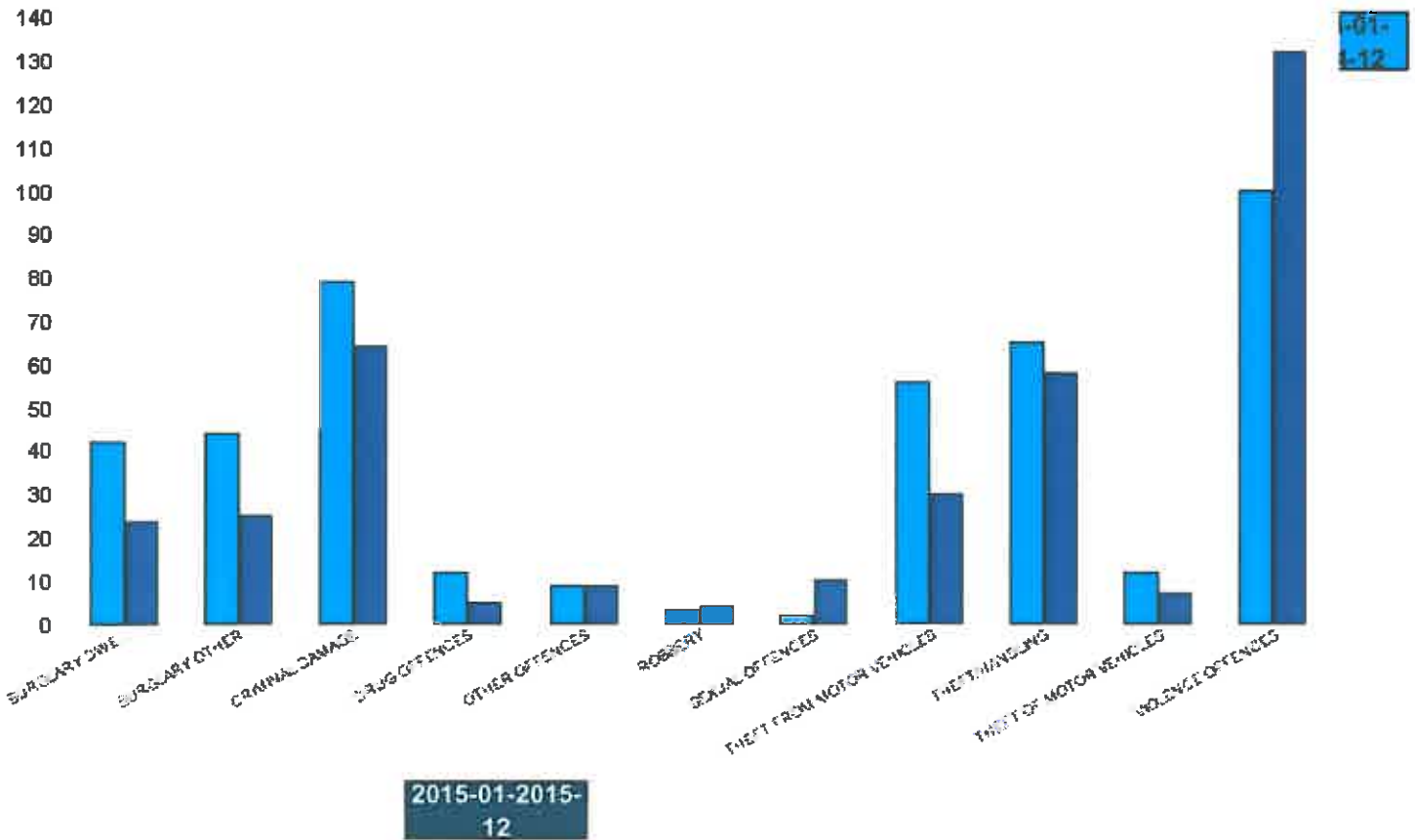
HO Group	Number of Crimes Latest 12 Months	Number of Crimes Previous 12 Months	+/- Crime	% Change	No of Resolved Outcome Crimes	Detection Rate (Past 12 Months)
BURGLARY DWELLING	13	18	-5	-28%	2	15%
BURGLARY OTHER	18	45	-27	-60%	2	11%
CRIMINAL DAMAGE	59	91	-32	-35%	7	12%
DRUG OFFENCES	3	7	-4	-57%	4	133%
OTHER OFFENCES	8	8	0	0%	4	50%
ROBBERY	3	2	1	50%	1	33%
SEXUAL OFFENCES	12	7	5	71%	2	17%
THEFT FROM MOTOR VEHICLES	20	26	-6	-23%	2	10%
THEFT/HANDLING	51	86	-35	-41%	8	16%
THEFT OF MOTOR VEHICLES	5	17	-12	-71%	0	0%
VIOLENCE OFFENCES	84	94	-10	-11%	18	21%
Sum:	276	401	-125	-31%	50	18%



A6 Towns Forum Report 2014-01 to 2015-12

K012 Rothwell - Crime

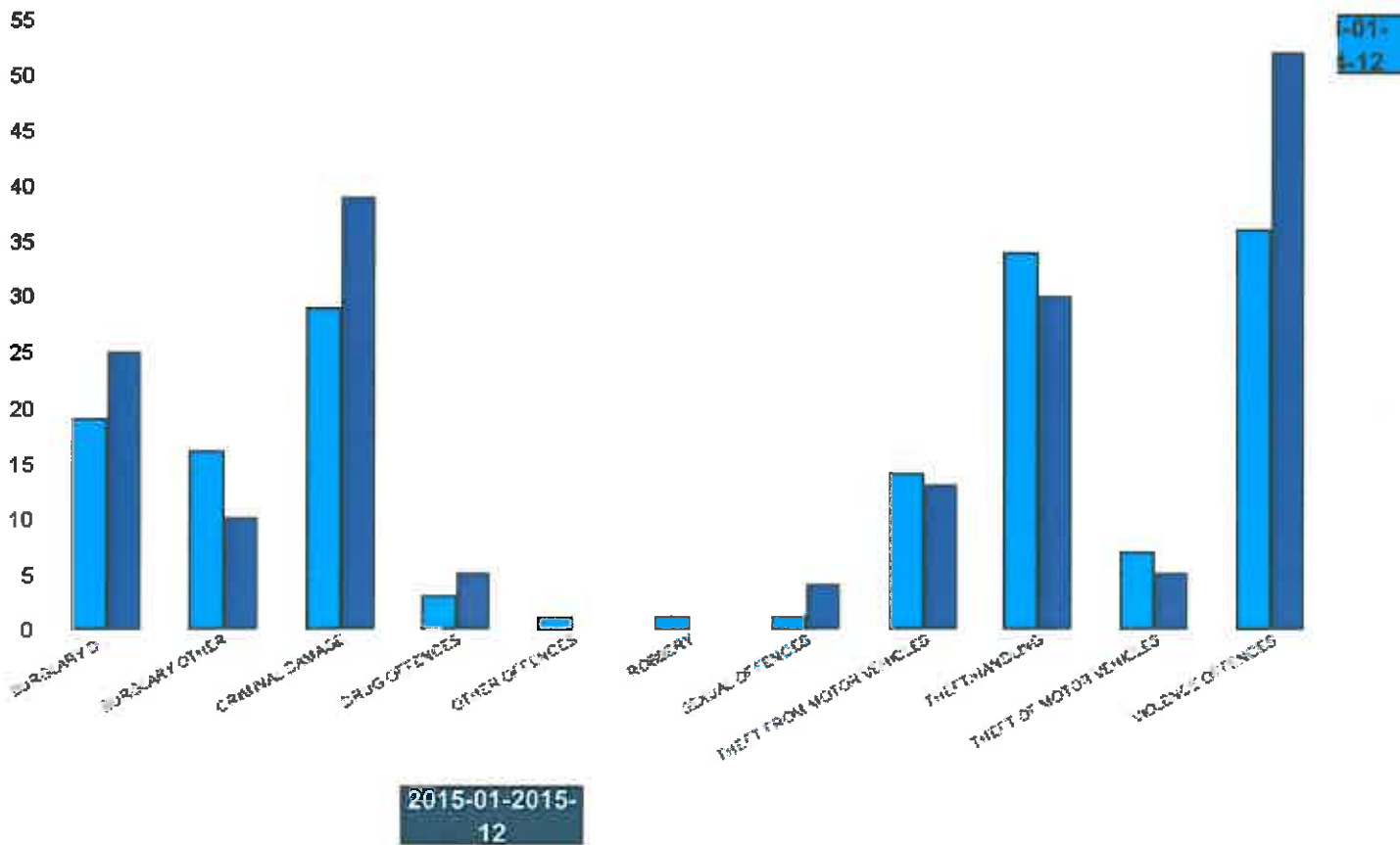
HO Group	No of Crimes Latest 12 Months	No of Crimes Previous 12 Months	+/- Crime	% Change	No of Resolved Outcome Crimes	Detection Rate (Past 12 Months)
BURGLARY DWELLING	24	42	-18	-43%	3	13%
BURGLARY OTHER	25	44	-19	-43%	3	12%
CRIMINAL DAMAGE	64	79	-15	-19%	5	8%
DRUG OFFENCES	5	12	-7	-58%	4	80%
OTHER OFFENCES	9	9	0	0%	5	56%
ROBBERY	4	3	1	33%	0	0%
SEXUAL OFFENCES	10	2	8	400%	2	20%
THEFT FROM MOTOR VEHICLES	30	56	-26	-46%	0	0%
THEFT/HANDLING	58	65	-7	-11%	6	10%
THEFT OF MOTOR VEHICLES	7	12	-5	-42%	0	0%
VIOLENCE OFFENCES	132	100	32	32%	34	26%
Sum:	368	424	-56	-13%	62	17%



A6 Towns Forum Report 2014-01 to 2015-12

K003 Barton - Crime

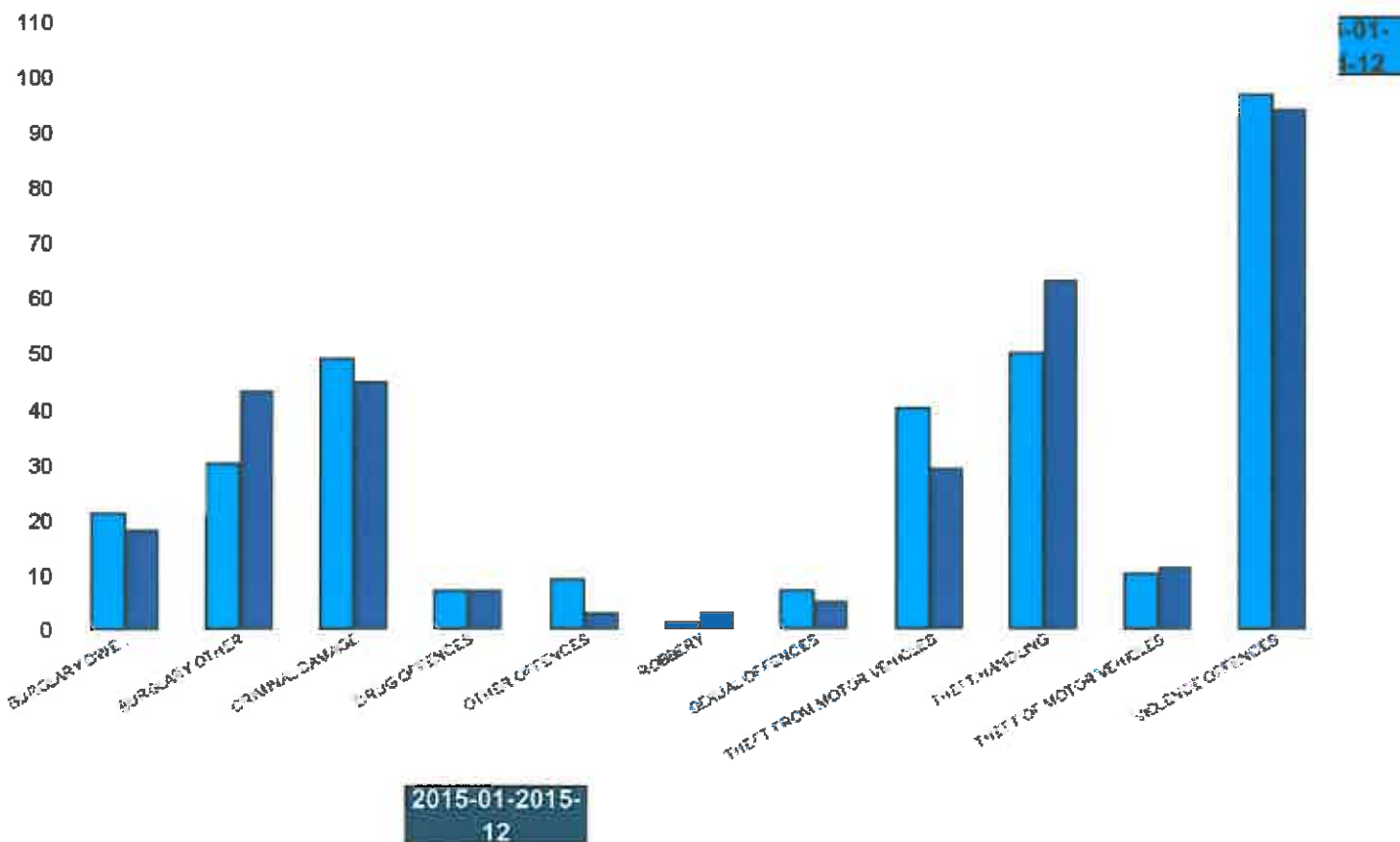
HO Group	No of Crimes Latest 12 Months	No of Crimes Previous 12 Months	+/- Crime	% Change	No of Resolved Outcome Crimes	Detection Rate (Past 12 Months)
BURGLARY DWELLING	25	19	6	32%	0	0%
BURGLARY OTHER	10	16	-6	-38%	0	0%
CRIMINAL DAMAGE	39	29	10	34%	1	3%
DRUG OFFENCES	5	3	2	67%	5	100%
OTHER OFFENCES	0	1	-1	-100%	0	0%
ROBBERY	0	1	-1	-100%	0	0%
SEXUAL OFFENCES	4	1	3	300%	0	0%
THEFT FROM MOTOR VEHICLES	13	14	-1	-7%	0	0%
THEFT/HANDLING	30	34	-4	-12%	2	7%
THEFT OF MOTOR VEHICLES	5	7	-2	-29%	0	0%
VIOLENCE OFFENCES	52	36	16	44%	16	31%
Sum:	183	161	22	14%	24	13%



A6 Towns Forum Report 2014-01 to 2015-12

K005 Burton Latimer - Crime

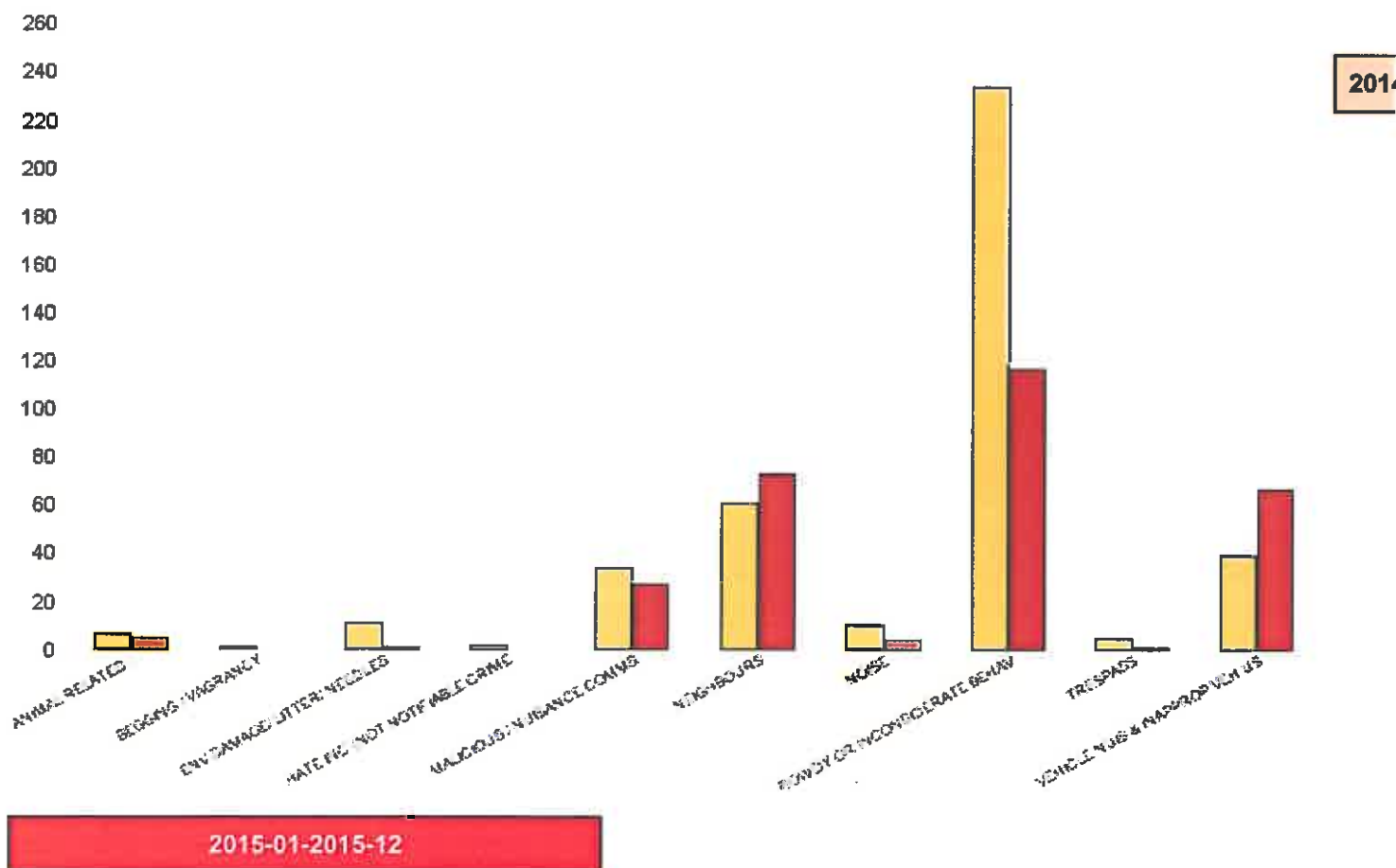
HO Group	No of Crimes Latest 12 Months	No of Crimes Previous 12 Months	+/- Crime	% Change	No of Resolved Outcome Crimes	Detection Rate (Past 12 Months)
BURGLARY DWELLING	18	21	-3	-14%	1	6%
BURGLARY OTHER	43	30	13	43%	0	0%
CRIMINAL DAMAGE	45	49	-4	-8%	5	11%
DRUG OFFENCES	7	7	0	0%	6	86%
OTHER OFFENCES	3	9	-6	-67%	1	33%
ROBBERY	3	1	2	200%	0	0%
SEXUAL OFFENCES	5	7	-2	-29%	0	0%
THEFT FROM MOTOR VEHICLES	29	40	-11	-28%	0	0%
THEFT/HANDLING	63	50	13	26%	15	24%
THEFT OF MOTOR VEHICLES	11	10	1	10%	0	0%
VIOLENCE OFFENCES	94	97	-3	-3%	31	33%
Sum:	321	321	0	0%	59	18%



A6 Towns Forum Report 2014-01 to 2015-12

K006 & K007 Desborough ASB

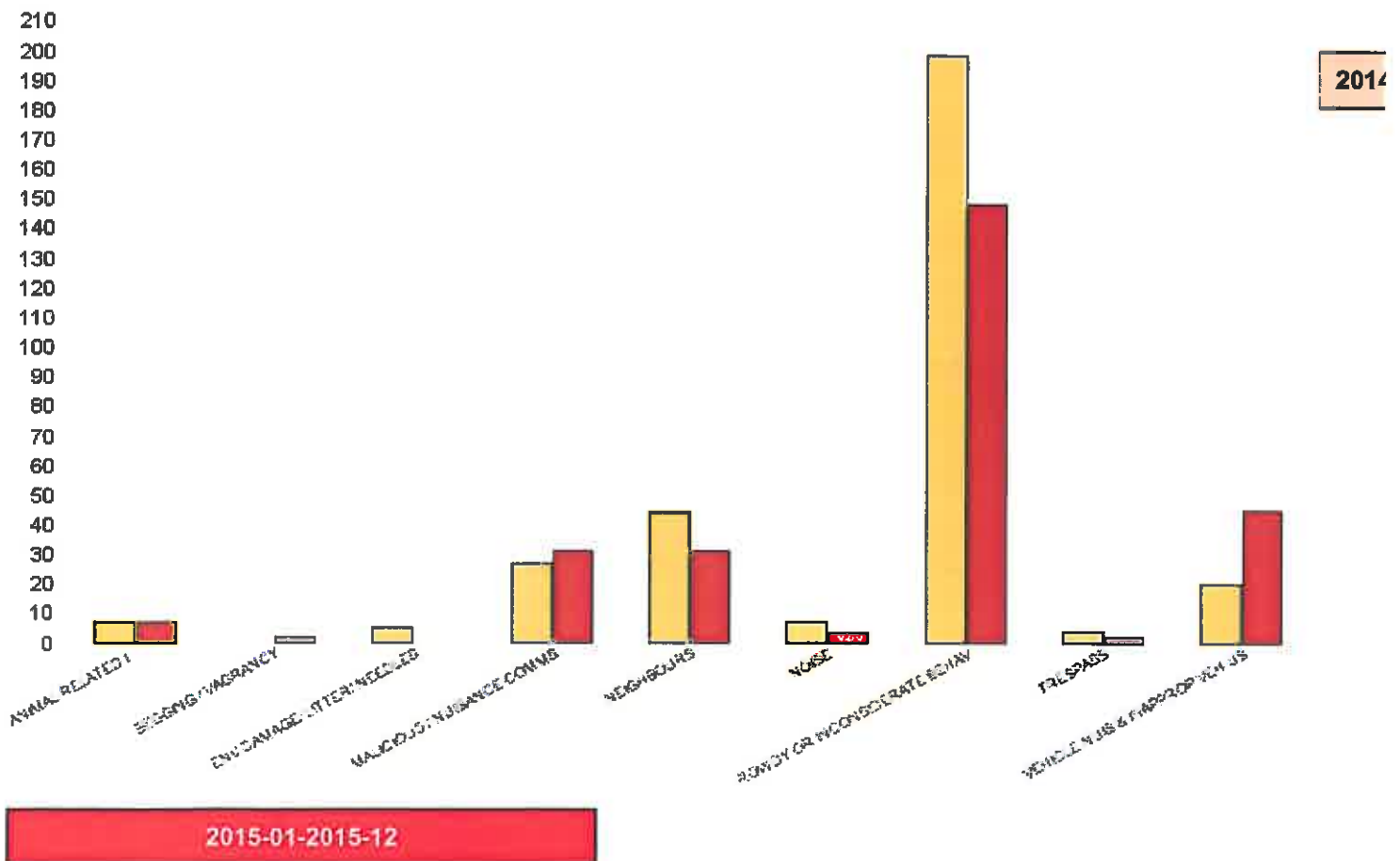
NSIR Closing Cat. 1 Desc	Number of Incidents Latest 12 Months	No of Incidents previous 12 Months	+/- Incidents	% Change Incidents
ANIMAL RELATED INC ANTI-SOCIAL	5	6	-1	-17%
BEGGING / VAGRANCY	0	1	-1	-100%
ENV.DAMAGE/ LITTER/ NEEDLES	1	11	-10	-91%
HATE INC (NOT NOTIFIABLE CRIME	0	2	-2	-100%
MALICIOUS / NUISANCE COMMS	27	34	-7	-21%
NEIGHBOURS	73	61	12	20%
NOISE	4	10	-6	-60%
ROWDY OR INCONSIDERATE BEHAV	117	234	-117	-50%
TRESPASS	1	5	-4	-80%
VEHICLE NUIS & INAPPROP VEH US	67	39	28	72%
Sum:	295	403	-108	-27%



A6 Towns Forum Report 2014-01 to 2015-12

K012 Rothwell ASB

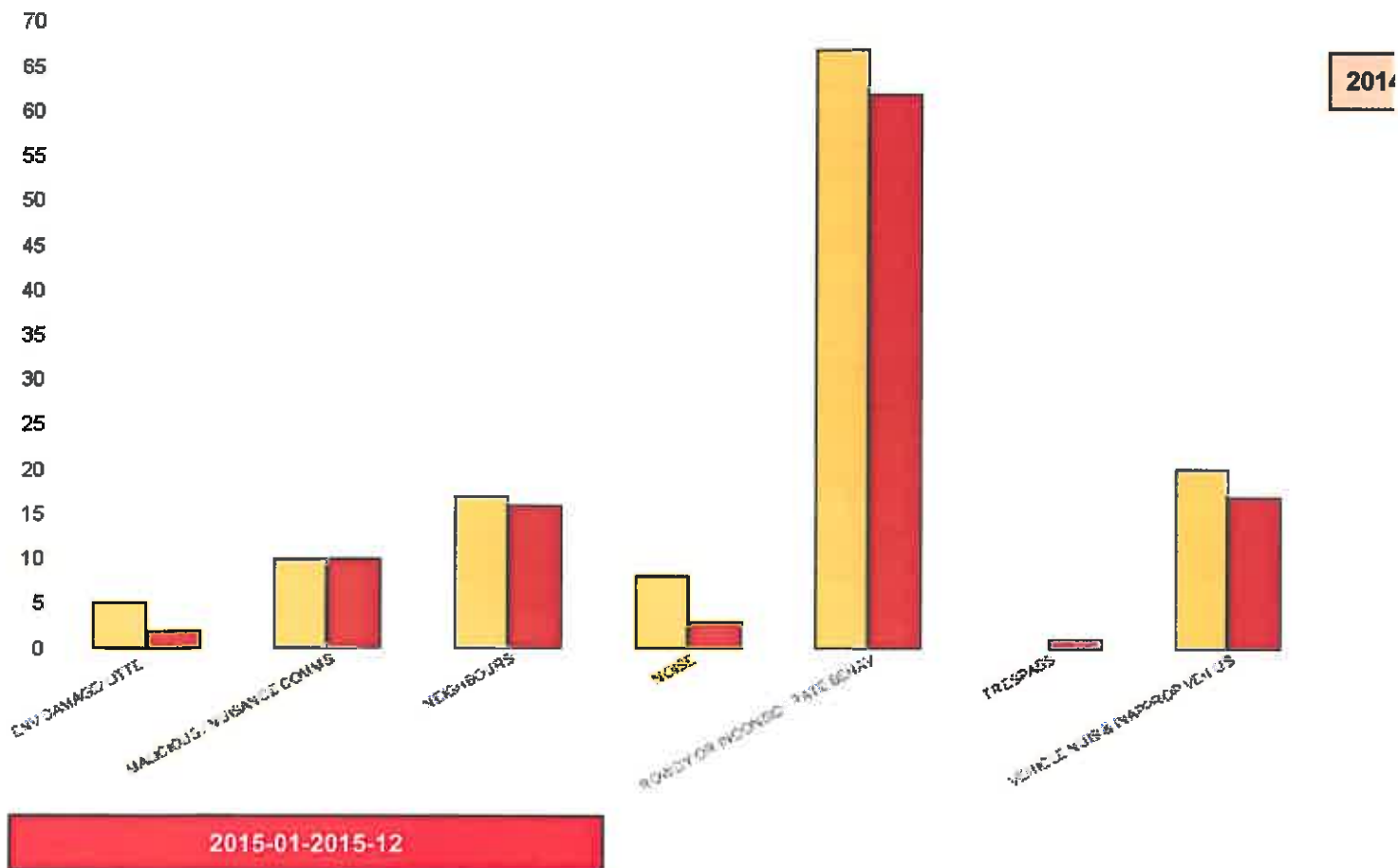
NSIR Closing Cat. 1 Desc	Number of Incidents Latest 12 Months	No of Incidents previous 12 Months	+/- Incidents	% Change Incidents
ANIMAL RELATED INC ANTI-SOCIAL	7	7	0	0%
BEGGING / VAGRANCY	2	0	2	0%
ENV.DAMAGE/ LITTER/ NEEDLES	0	5	-5	-100%
MALICIOUS / NUISANCE COMMS	31	27	4	15%
NEIGHBOURS	31	44	-13	-30%
NOISE	3	7	-4	-57%
ROWDY OR INCONSIDERATE BEHAV	148	198	-50	-25%
TRESPASS	2	4	-2	-50%
VEHICLE NUIS & INAPPROP VEH US	45	20	25	125%
Sum:	269	312	-43	-14%



A6 Towns Forum Report 2014-01 to 2015-12

K003 Barton ASB

NSIR Closing Cat. 1 Desc	No of Incidents Lastest 12 months	No of Incidents Previous 12 months	+/- Incidents	% Change Incidents
ENV.DAMAGE/ LITTER/ NEEDLES	2	5	-3	-60%
MALICIOUS / NUISANCE COMMS	10	10	0	0%
NEIGHBOURS	16	17	-1	-6%
NOISE	3	8	-5	-63%
ROWDY OR INCONSIDERATE BEHAV	62	67	-5	-7%
TRESPASS	1	0	1	0%
VEHICLE NUIS & INAPPROP VEH US	17	20	-3	-15%
Sum:	111	127	-16	-13%



A6 Towns Forum Report 2014-01 to 2015-12

K005 Latimer ASB

NSIR Closing Cat. 1 Desc	Number of Incidents Latest 12 Months	No of Incidents previous 12 Months	+/- Incidents	% Change Incidents
ANIMAL RELATED INC ANTI-SOCIAL	8	5	3	60%
BEGGING / VAGRANCY	1	0	1	0%
ENV.DAMAGE/ LITTER/ NEEDLES	1	2	-1	-50%
MALICIOUS / NUISANCE COMMS	27	37	-10	-27%
NEIGHBOURS	48	58	-10	-17%
NOISE	13	11	2	18%
ROWDY OR INCONSIDERATE BEHAV	97	141	-44	-31%
TRESPASS	2	1	1	100%
VEHICLE NUIS & INAPPROP VEH US	24	29	-5	-17%
Sum:	221	284	-63	-22%

